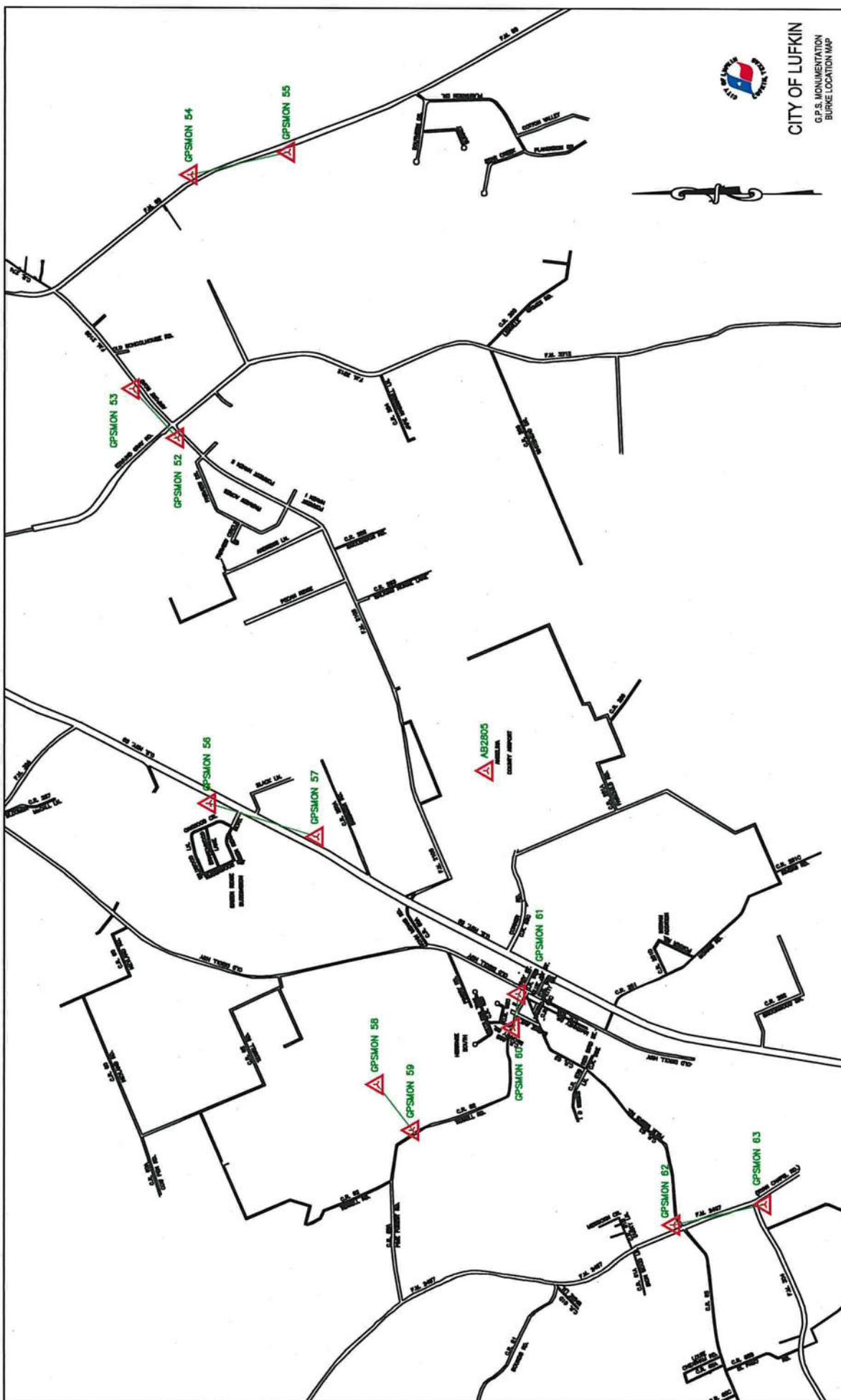


CITY OF LUFKIN

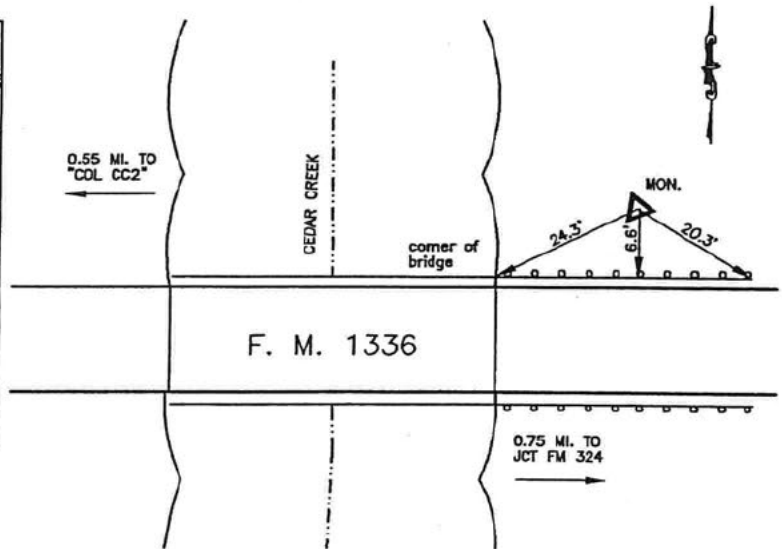
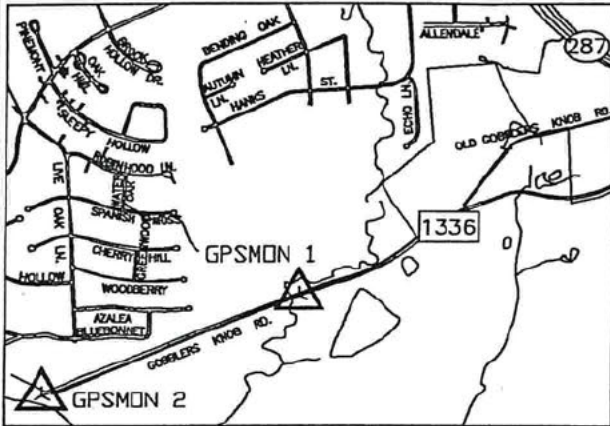
ENGINEERING DEPARTMENT
P. O. DRAWER 190
300 E. SHEPHERD
LUFKIN, TEXAS 79502-0190
PHONE: (409) 633-0414

CITY OF LUFKIN

G.P.S. MONUMENTATION
LOCATION MAP



NAD 83 U.S. SURVEY FEET



MONUMENT NO.: 1

CITY MAP NO. 25
AERIAL MAP NO. O-24
WATER/SEWER MAP NO. K-26

GEODIETIC POSITION NAD83 (1993)

LATITUDE: N31°18'13.93635"

LONGITUDE: W94°45'21.57619"

ELLIPSOID HEIGHT (APPROX.) 45.582 METERS

TEXAS STATE PLANE COORDINATES, CENTRAL ZONE (4203) NAD 83 (U.S. SURVEY FEET) GRID VALUES. TO CONVERT TO SURFACE VALUES MULTIPLY BY THE COMBINED SCALE FACTOR (C.S.F.)

N= 10481605.069 E=4037672.471 ELEV= 239.43' (GPS) C.S.F.= 1.00010430

GENERAL LOCATION: North side of F.M. Highway No. 1336 approximately 0.75 miles West of the intersection of F.M. Highway No. 1336 and F.M. Highway No. 324.

MONUMENT DESCRIPTION: 4" diameter aluminum cap on a 3/4" X 36" steel rod, with a 1/2" rod for metal detection.

NOTES:

HORIZONTAL POSITIONS ARE RELATIVE TO NGS MONUMENT PID BY1106 (REDFIELD 2). GPS ORTHOMETRIC VALUES ARE BASED ON NGVD 88 AND THEY SHOULD BE CONFIRMED DIFFERENTIAL LEVELING TO EXISTING NGS VERTICAL CONTROL.

COORDINATES ESTABLISHED: APRIL 2000



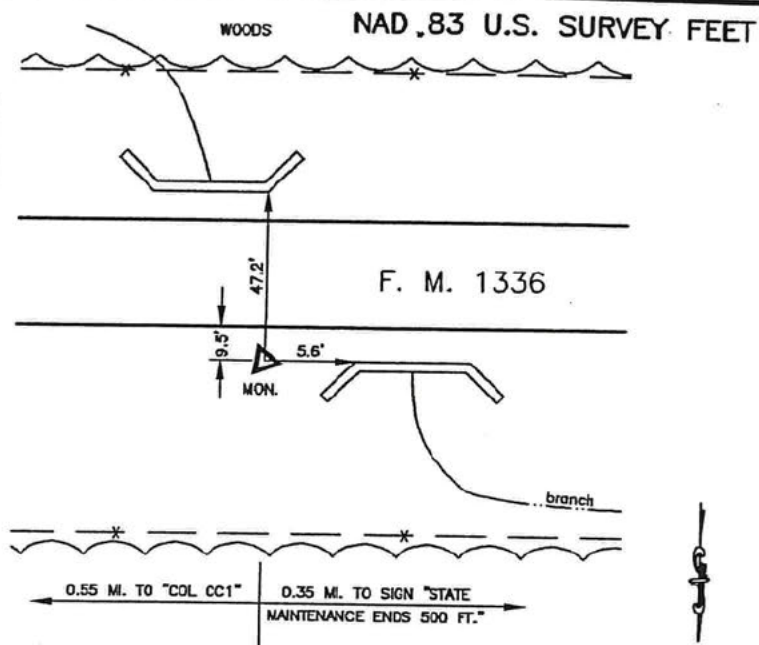
CITY OF LUFKIN

ENGINEERING DEPARTMENT
P. O. DRAWER 190
300 E. SHEPHERD
LUFKIN, TEXAS 79502-0190
PHONE: (409) 633-0414

G.P.S. MONUMENTATION

BY: 
GOODWIN-LASITER, INC.

DATE: 7-31-00



CITY MAP NO. _____ 25
AERIAL MAP NO. _____ 0-24
WATER/SEWER MAP NO. _____ K-26

LATITUDE: N31°18'04.95867"

LONGITUDE: W94°45'52.84900"

TEXAS STATE PLANE COORDINATES, CENTRAL ZONE (4203) NAD 83 (U.S. SURVEY FEET) GRID
VALUES. TO CONVERT TO SURFACE VALUES MULTIPLY BY THE COMBINED SCALE FACTOR (C.S.F.)

N= 10480563.294 E= 4035008.321 ELEV= 244.28' (GPS) C.S.F.= 1.00010430

GENERAL LOCATION: South side of F.M. Highway No. 1336 approximately 1.3 miles West of the intersection of F.M. Highway No. 1336 and F.M. Highway No. 324.

MONUMENT DESCRIPTION: 4" diameter aluminum cap on a 3/4" X 36" steel rod, with a 1/2" rod for metal detection.

HORIZONTAL POSITIONS ARE RELATIVE TO NGS MONUMENT PID BY1106 (REDFIELD 2).
GPS ORTHOMETRIC VALUES ARE BASED ON NGVD 88 AND THEY SHOULD BE CONFIRMED
DIFFERENTIAL LEVELING TO EXISTING NGS VERTICAL CONTROL.

COORDINATES ESTABLISHED: APRIL 2000



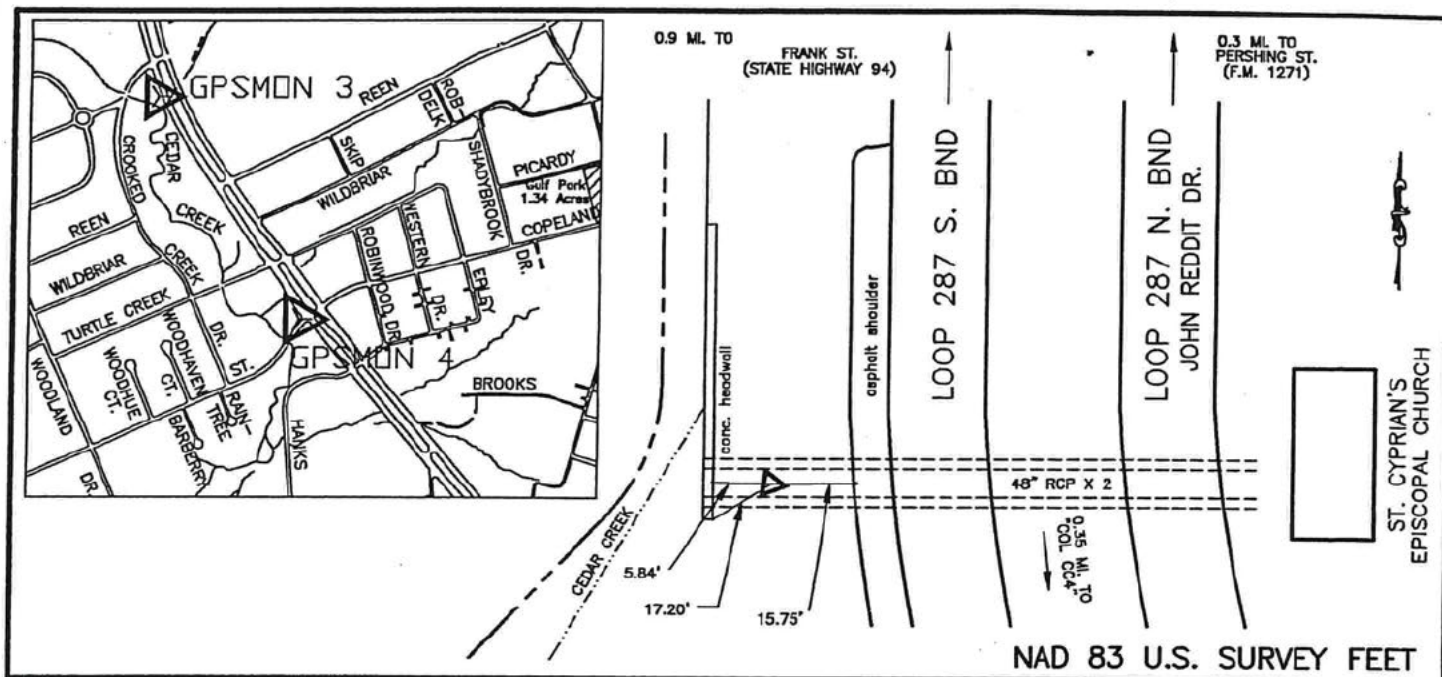
CITY OF LUFKIN
ENGINEERING DEPARTMENT
P. O. DRAWER 190
300 E. SHEPHERD
LUFKIN, TEXAS 79502-0190
PHONE: (409) 633-0414

G.P.S. MONUMENTATION

BY:

DATE: 7-31-00

GOODWIN-LASITER, INC.



MONUMENT NO.: 3

CITY MAP NO. 352
 AERIAL MAP NO. N-22
 WATER/SEWER MAP NO. J-23

GEODIETIC POSITION NAD83 (1993)

LATITUDE: N31°19'13.21131"

LONGITUDE: W94°45'16.13314

ELLIPSOID HEIGHT (APPROX.) 49.558 METERS

TEXAS STATE PLANE COORDINATES, CENTRAL ZONE (4203) NAD 83 (U.S. SURVEY FEET) GRID VALUES. TO CONVERT TO SURFACE VALUES MULTIPLY BY THE COMBINED SCALE FACTOR (C.S.F.)

N= 10487610.027 E= 4037843.838 ELEV= 252.40' (GPS) C.S.F.= 1.00010430

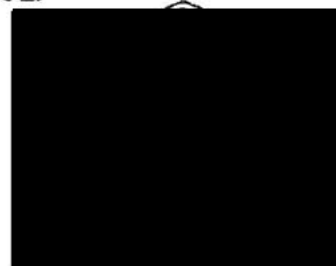
GENERAL LOCATION: West side of State Highway Loop No. 287 approximately 0.3 miles South of the intersection of State Highway Loop No. 287 and Pershing Avenue, North side of Cedar Creek.

MONUMENT DESCRIPTION: BRONZE CAP SET IN CONCRETE MONUMENT AND STAMPED "CITY OF LUFKIN" "SURVEY MONUMENT".

NOTES:

HORIZONTAL POSITIONS ARE RELATIVE TO NGS MONUMENT PID BY1106 (REDFIELD 2). GPS ORTHOMETRIC VALUES ARE BASED ON NGVD 88 AND THEY SHOULD BE CONFIRMED DIFFERENTIAL LEVELING TO EXISTING NGS VERTICAL CONTROL.

COORDINATES ESTABLISHED: APRIL 2000



CITY OF LUFKIN

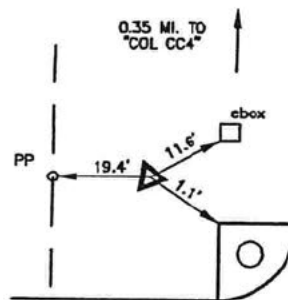
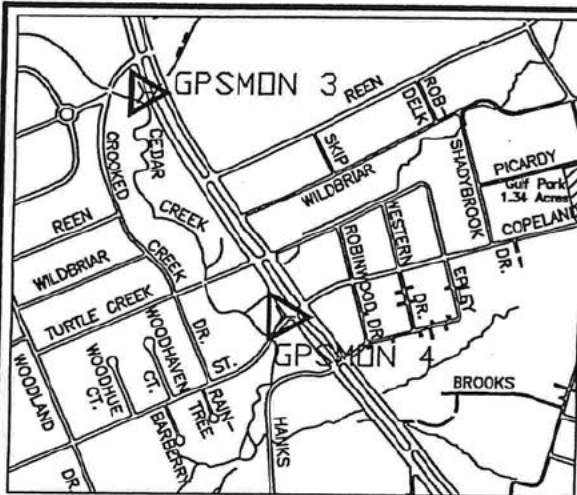
ENGINEERING DEPARTMENT
 P. O. DRAWER 190
 300 E. SHEPHERD
 LUFKIN, TEXAS 79502-0190
 PHONE: (409) 633-0414

G.P.S. MONUMENTATION

BY: 

DATE: 7-31-00

GOODWIN-LASITER, INC.



NAD 83 U.S. SURVEY FEET

COPELAND DR.

LOOP 287 N. BND

LOOP 287 N. BND

MONUMENT NO.: 4

CITY MAP NO. 352
AERIAL MAP NO. N-23
WATER/SEWER MAP NO. K-25

GEODIETIC POSITION NAD83 (1993)

LATITUDE: N31°18'57.57225"

LONGITUDE: W94°45'05.53850"

ELLIPSOID HEIGHT (APPROX.) 49.129 METERS

TEXAS STATE PLANE COORDINATES, CENTRAL ZONE (4203) NAD 83 (U.S. SURVEY FEET) GRID VALUES. TO CONVERT TO SURFACE VALUES MULTIPLY BY THE COMBINED SCALE FACTOR (C.S.F.)

N= 10486078.007 E= 4038840.871 ELEV= 251.03' (GPS) C.S.F.= 1.00010430

GENERAL LOCATION: Northwest corner of the intersection of State Highway Loop No. 287 and Copeland Drive.

MONUMENT DESCRIPTION: 4" diameter aluminum cap on a 3/4" X 36" steel rod, with a 1/2" rod for metal detection.

NOTES:

HORIZONTAL POSITIONS ARE RELATIVE TO NGS MONUMENT PID BY1106 (REDFIELD 2). GPS ORTHOMETRIC VALUES ARE BASED ON NGVD 88 AND THEY SHOULD BE CONFIRMED DIFFERENTIAL LEVELING TO EXISTING NGS VERTICAL CONTROL.

COORDINATES ESTABLISHED: APRIL 2000



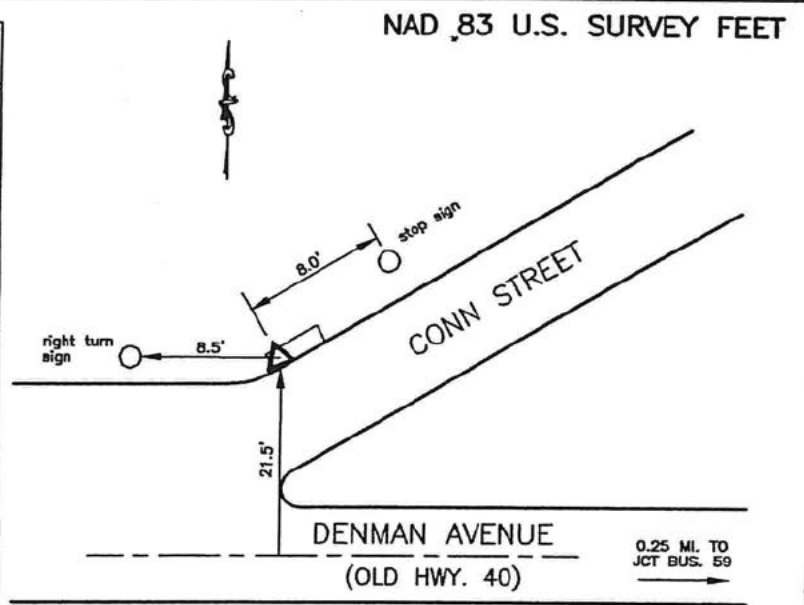
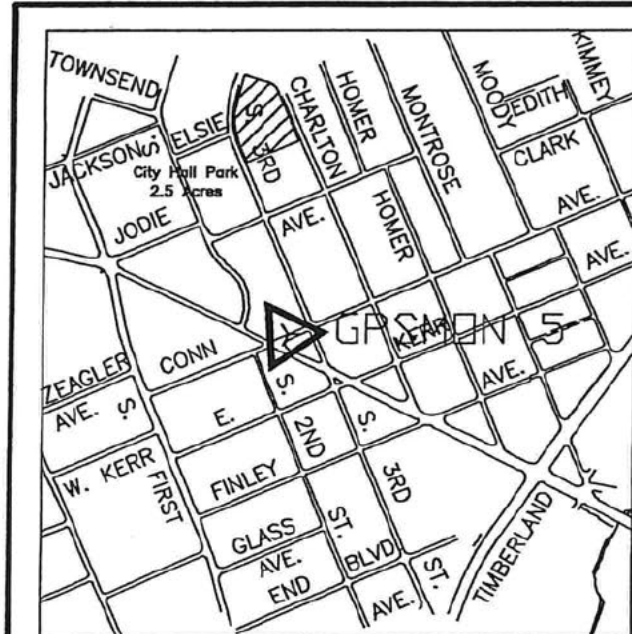
CITY OF LUFKIN

ENGINEERING DEPARTMENT
P. O. DRAWER 190
300 E. SHEPHERD
LUFKIN, TEXAS 79502-0190
PHONE: (409) 633-0414

G.P.S. MONUMENTATION

BY: [REDACTED] DATE: 7-31-00

GOODWIN-LASITER, INC.



MONUMENT NO.: 5

CITY MAP NO. 388
AERIAL MAP NO. Q-20
WATER/SEWER MAP NO. M-22

GEODIETIC POSITION NAD83 (1993)

LATITUDE: N31°19'57.50940"

LONGITUDE: W94°43'37.54223"

ELLIPSOID HEIGHT (APPROX.) 59.772 METERS

TEXAS STATE PLANE COORDINATES, CENTRAL ZONE (4203) NAD 83 (U.S. SURVEY FEET) GRID VALUES. TO CONVERT TO SURFACE VALUES MULTIPLY BY THE COMBINED SCALE FACTOR (C.S.F.)

N= 10492509.730 E= 4046158.952 ELEV= 285.92' (GPS) C.S.F.= 1.00010430

GENERAL LOCATION: Northwest corner of Conn Street and Denman Avenue approximately 21.5' North of the centerline of Denman Avenue (Old Highway No. 40).

MONUMENT DESCRIPTION: Bronze Tablet found in concrete drainage inlet.

NOTES:

HORIZONTAL POSITIONS ARE RELATIVE TO NGS MONUMENT PID BY1106 (REDFIELD 2). GPS ORTHOMETRIC VALUES ARE BASED ON NGVD 88 AND THEY SHOULD BE CONFIRMED DIFFERENTIAL LEVELING TO EXISTING NGS VERTICAL CONTROL.

COORDINATES ESTABLISHED: APRIL 2000



CITY OF LUFKIN
ENGINEERING DEPARTMENT
P. O. DRAWER 190
300 E. SHEPHERD
LUFKIN, TEXAS 79502-0190
PHONE: (409) 633-0414

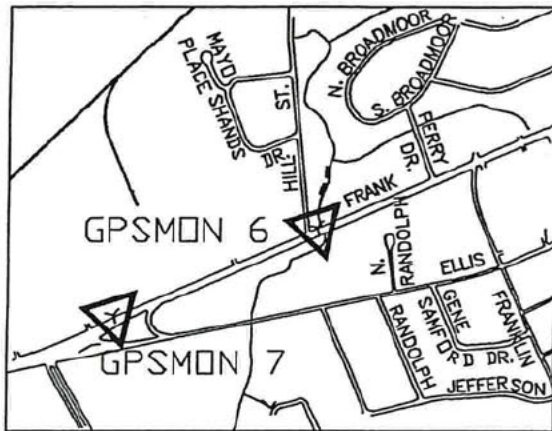
G.P.S. MONUMENTATION

BY: 

DATE: 7-31-00

GOODWIN-LASITER, INC.

NAD 83 U.S. SURVEY FEET



0.25 MI. TO
"COL. C66"

NOAH'S
ARK

PP

32.5°

4.4°

FRANK AVE. (HWY 94)

BRIDGE

CEDAR CREEK

MONUMENT NO.: 6

CITY MAP NO. 356

AERIAL MAP NO. N-20

WATER/SEWER MAP NO. K-21

GEODIETIC POSITION NAD83 (1993)

LATITUDE: N31°20'09.29438"

LONGITUDE: W94°44'49.59540"

ELLIPSOID HEIGHT (APPROX.) 56.278 METERS

TEXAS STATE PLANE COORDINATES, CENTRAL ZONE (4203) NAD 83 (U.S. SURVEY FEET) GRID VALUES. TO CONVERT TO SURFACE VALUES MULTIPLY BY THE COMBINED SCALE FACTOR (C.S.F.)

N= 10493384.700 E= 4039858.279 ELEV= 274.40' (GPS) C.S.F.= 1.00010430

GENERAL LOCATION: North side of Frank Avenue (Highway 94) East of the intersection of Hill Street and Frank Avenue (Highway 94), on the West side of Cedar Creek.

MONUMENT DESCRIPTION: 4" diameter aluminum cap on a 3/4" X 36" steel rod, with a 1/2" rod for metal detection.

NOTES:

HORIZONTAL POSITIONS ARE RELATIVE TO NGS MONUMENT PID BY1106 (REDFIELD 2). GPS ORTHOMETRIC VALUES ARE BASED ON NGVD 88 AND THEY SHOULD BE CONFIRMED DIFFERENTIAL LEVELING TO EXISTING NGS VERTICAL CONTROL.

COORDINATES ESTABLISHED: APRIL 2000



CITY OF LUFKIN

ENGINEERING DEPARTMENT
P. O. DRAWER 190
300 E. SHEPHERD
LUFKIN, TEXAS 79502-0190
PHONE: (409) 633-0414

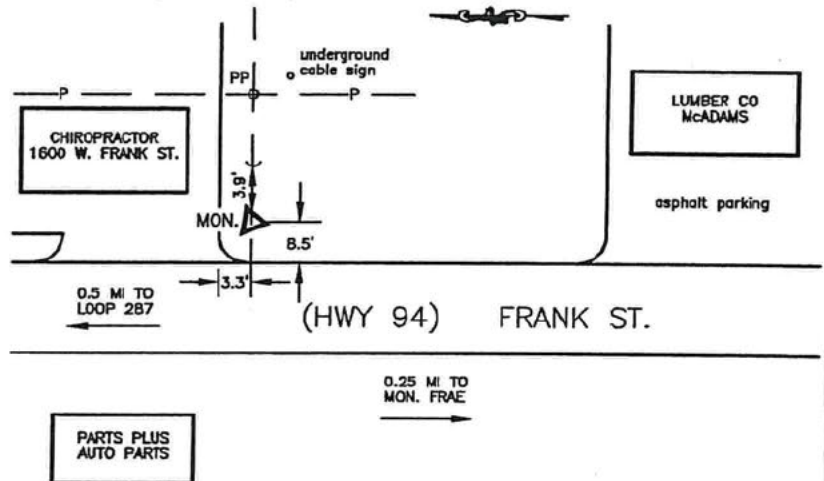
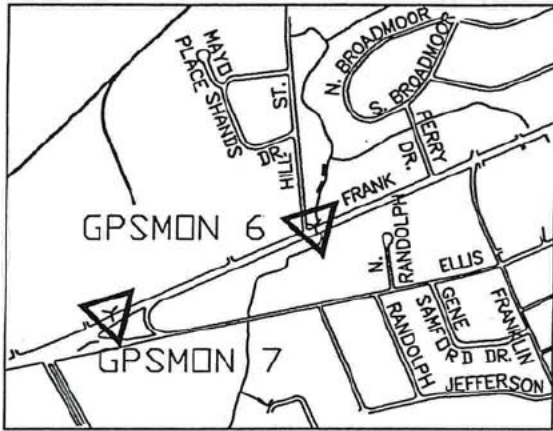
G.P.S. MONUMENTATION

BY:

DATE: 7-31-06

GOODWIN-LASITER, INC.

NAD 83 U.S. SURVEY FEET



MONUMENT NO.: 7

CITY MAP NO. 356
AERIAL MAP NO. N-20
WATER/SEWER MAP NO. K-21

GEODIETIC POSITION NAD83 (1993)

LATITUDE: N31°20'04.38245"

LONGITUDE: W94°45'04.80715"

ELLIPSOID HEIGHT (APPROX.) 56.403 METERS

TEXAS STATE PLANE COORDINATES, CENTRAL ZONE (4203) NAD 83 (U.S. SURVEY FEET) GRID VALUES. TO CONVERT TO SURFACE VALUES MULTIPLY BY THE COMBINED SCALE FACTOR (C.S.F.)

N= 10492822.854 E= 4038565.642 ELEV= 274.81' (GPS) C.S.F.= 1.00010430

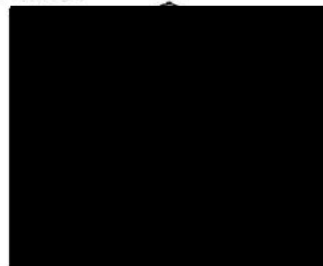
GENERAL LOCATION: North side of Frank Avenue (Highway 94) approximately 0.5 miles East of the intersection of State Highway Loop No. 287 and Frank Avenue.

MONUMENT DESCRIPTION: 4" diameter aluminum cap on a 3/4" X 36" steel rod, with a 1/2" rod for metal detection.

NOTES:

HORIZONTAL POSITIONS ARE RELATIVE TO NGS MONUMENT PID BY1106 (REDFIELD 2). GPS ORTHOMETRIC VALUES ARE BASED ON NGVD 88 AND THEY SHOULD BE CONFIRMED DIFFERENTIAL LEVELING TO EXISTING NGS VERTICAL CONTROL.

COORDINATES ESTABLISHED: APRIL 2000

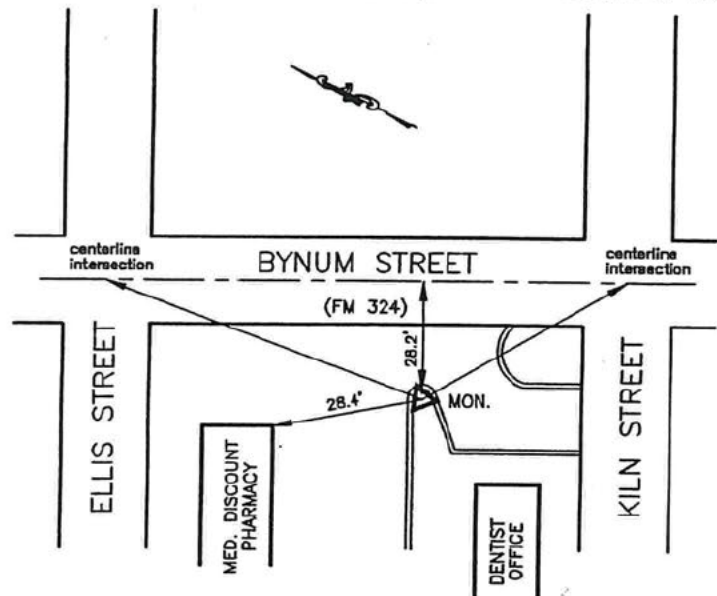
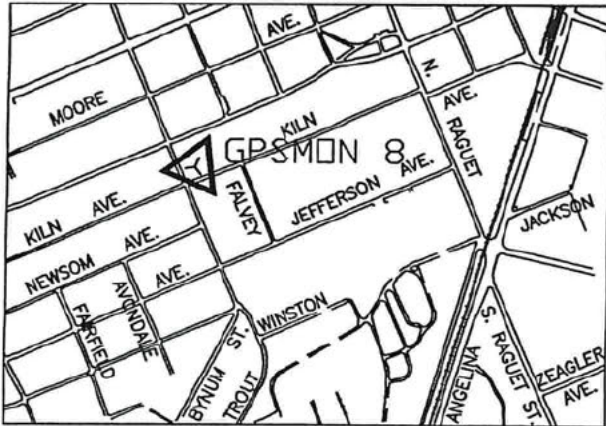


CITY OF LUFKIN
ENGINEERING DEPARTMENT
P. O. DRAWER 190
300 E. SHEPHERD
LUFKIN, TEXAS 79502-0190
PHONE: (409) 633-0414

G.P.S. MONUMENTATION

BY:  DATE: 7-31-00
GOODWIN-LASITER, INC.

NAD 83 U.S. SURVEY FEET



MONUMENT NO.: 8

CITY MAP NO. 389
AERIAL MAP NO. 0-20
WATER/SEWER MAP NO. L-21

GEODIETIC POSITION NAD83 (1993)

LATITUDE: N31°20'09.82110"

LONGITUDE: W94°44'19.32707"

ELLIPSOID HEIGHT (APPROX.) 67.173 METERS

TEXAS STATE PLANE COORDINATES, CENTRAL ZONE (4203) NAD 83 (U.S. SURVEY FEET) GRID VALUES. TO CONVERT TO SURFACE VALUES MULTIPLY BY THE COMBINED SCALE FACTOR (C.S.F.)

N= 10493569.710 E= 4042477.220 ELEV= 310.16' (GPS) C.S.F.= 1.00010430

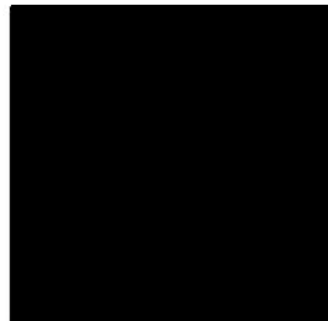
GENERAL LOCATION: West side of Bynum Street between Ellis Street and Kiln Street.

MONUMENT DESCRIPTION: U.S.C. & G.S. disk (line 88)

NOTES:

HORIZONTAL POSITIONS ARE RELATIVE TO NGS MONUMENT PID BY1106 (REDFIELD 2).
GPS ORTHOMETRIC VALUES ARE BASED ON NGVD 88 AND THEY SHOULD BE CONFIRMED
DIFFERENTIAL LEVELING TO EXISTING NGS VERTICAL CONTROL.

COORDINATES ESTABLISHED: APRIL 2000



CITY OF LUFKIN

ENGINEERING DEPARTMENT
P. O. DRAWER 190
300 E. SHEPHERD
LUFKIN, TEXAS 79502-0190
PHONE: (409) 633-0414

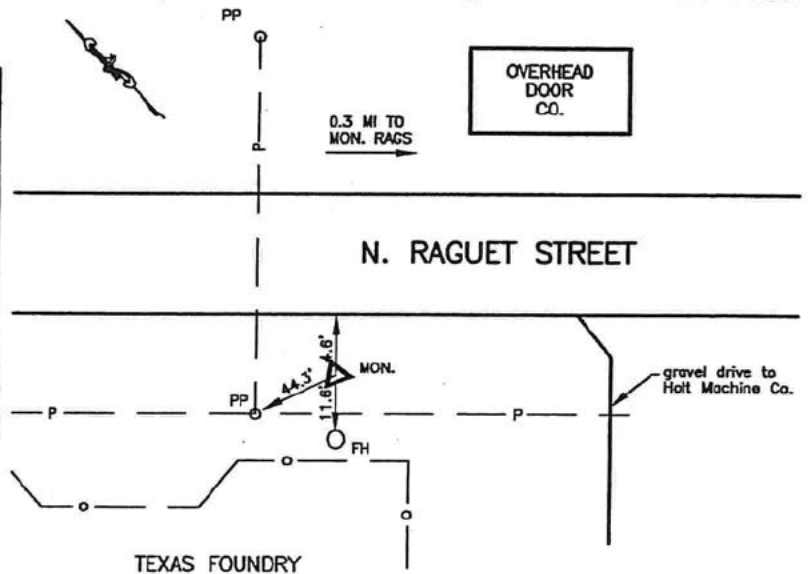
G.P.S. MONUMENTATION

BY: 

DATE: 7-31-00

GOODWIN-LASITER, INC.

NAD 83 U.S. SURVEY FEET



MONUMENT NO.: 9

CITY MAP NO. 384
AERIAL MAP NO. 0-19
WATER/SEWER MAP NO. L-19

GEODIETIC POSITION NAD83 (1993)

LATITUDE: N31°20'59.65548"

LONGITUDE: W94°44'30.43423"

ELLIPSOID HEIGHT (APPROX.) 66.415 METERS

TEXAS STATE PLANE COORDINATES, CENTRAL ZONE (4203) NAD 83 (U.S. SURVEY FEET) GRID VALUES. TO CONVERT TO SURFACE VALUES MULTIPLY BY THE COMBINED SCALE FACTOR (C.S.F.)

N= 10498549.975 E= 4041262.216 ELEV= 307.61' (GPS) C.S.F.= 1.00010430

GENERAL LOCATION: Southwest side of Raguet Street approximately 0.5 miles Northwest of the intersection of Raguet Street and Abney Avenue.

MONUMENT DESCRIPTION: 4" diameter aluminum cap on a 3/4" X 36" steel rod, with a 1/2" rod for metal detection.

NOTES:

HORIZONTAL POSITIONS ARE RELATIVE TO NGS MONUMENT PID BY1106 (REDFIELD 2). GPS ORTHOMETRIC VALUES ARE BASED ON NGVD 88 AND THEY SHOULD BE CONFIRMED DIFFERENTIAL LEVELING TO EXISTING NGS VERTICAL CONTROL.

COORDINATES ESTABLISHED: APRIL 2000



CITY OF LUFKIN

ENGINEERING DEPARTMENT
P. O. DRAWER 190
300 E. SHEPHERD
LUFKIN, TEXAS 79502-0190
PHONE: (409) 633-0414

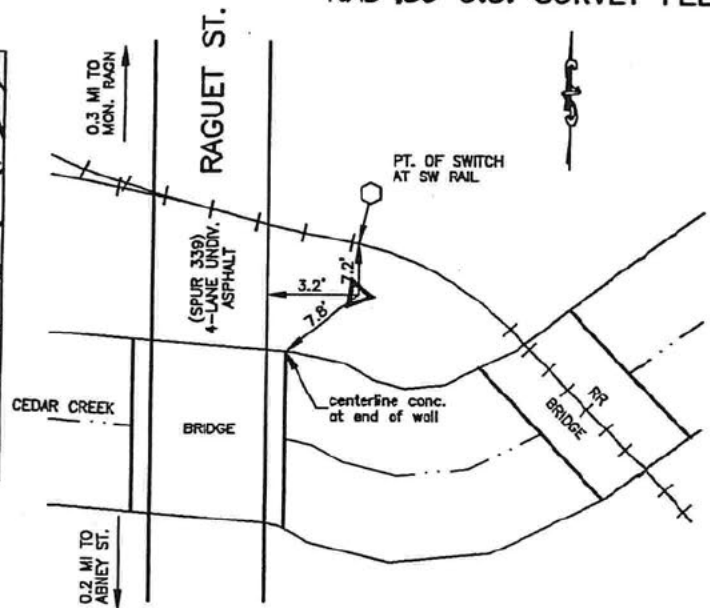
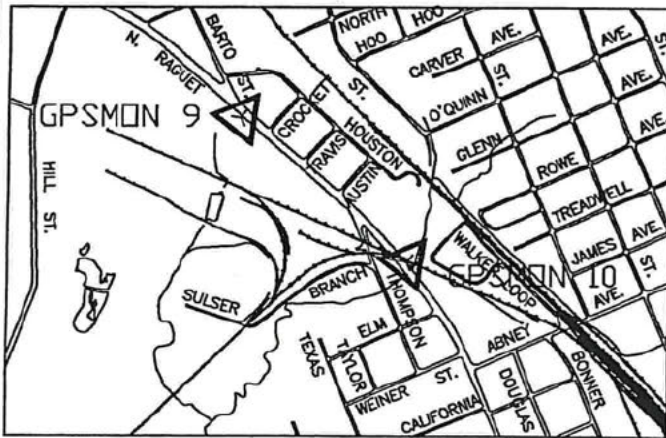
G.P.S. MONUMENTATION

BY: [REDACTED]

GOODWIN-LASITER, INC.

DATE: 7-31-00

NAD 83 U.S. SURVEY FEET



MONUMENT NO.: 10

CITY MAP NO. 384
AERIAL MAP NO. 0-19
WATER/SEWER MAP NO. L-19

GEODIETIC POSITION NAD83 (1993)

LATITUDE: N31°20'48.53928"

LONGITUDE: W94°44'16.74681"

ELLIPSOID HEIGHT (APPROX.) 63.960 METERS

TEXAS STATE PLANE COORDINATES, CENTRAL ZONE (4203) NAD 83 (U.S. SURVEY FEET) GRID VALUES. TO CONVERT TO SURFACE VALUES MULTIPLY BY THE COMBINED SCALE FACTOR (C.S.F.)

N= 10497487.915 E= 4042504.013 ELEV= 299.57' (GPS) C.S.F.= 1.00010430

GENERAL LOCATION: East side of Raguet Street approximately 0.2 miles North of the intersection of Abney Avenue and Raguet Street.

MONUMENT DESCRIPTION: 4" diameter aluminum cap on a 3/4" X 36" steel rod, with a 1/2" rod for metal detection.

NOTES:

HORIZONTAL POSITIONS ARE RELATIVE TO NGS MONUMENT PID BY1106 (REDFIELD 2). GPS ORTHOMETRIC VALUES ARE BASED ON NGVD 88 AND THEY SHOULD BE CONFIRMED DIFFERENTIAL LEVELING TO EXISTING NGS VERTICAL CONTROL.

COORDINATES ESTABLISHED: APRIL 2000

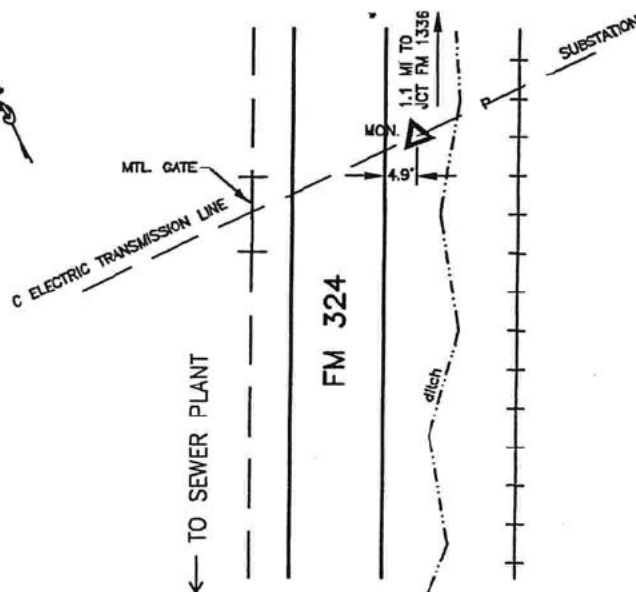
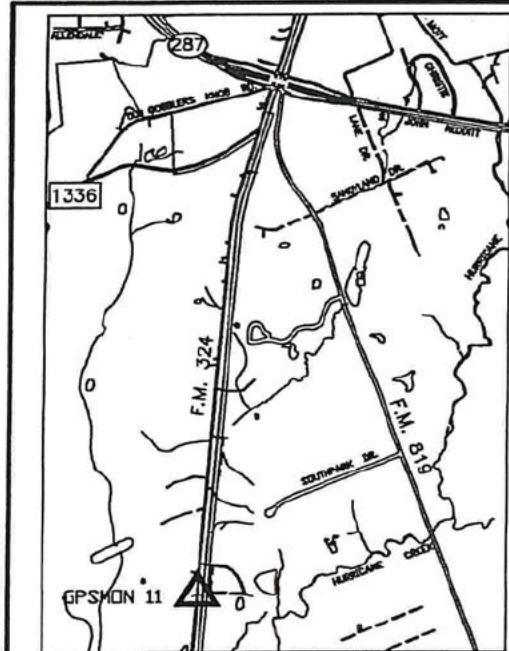


CITY OF LUFKIN

ENGINEERING DEPARTMENT
P. O. DRAWER 190
300 E. SHEPHERD
LUFKIN, TEXAS 79502-0190
PHONE: (409) 633-0414

G.P.S. MONUMENTATION

BY:  DATE: 7-31-00
GOODWIN-LASITER, INC.



NAD 83 U.S. SURVEY FEET

MONUMENT NO.: 11

CITY MAP NO. 25
AERIAL MAP NO. 0-27
WATER/SEWER MAP NO. K-29

GEODIETIC POSITION NAD83 (1993)

LATITUDE: N31°17'29.96289"

LONGITUDE: W94°44'47.94324"

ELLIPSOID HEIGHT (APPROX.) 43.854 METERS

TEXAS STATE PLANE COORDINATES, CENTRAL ZONE (4203) NAD 83 (U.S. SURVEY FEET) GRID VALUES. TO CONVERT TO SURFACE VALUES MULTIPLY BY THE COMBINED SCALE FACTOR (C.S.F.)

N= 14077314.194 E= 4040809.525 ELEV= 233.83' (GPS) C.S.F.= 1.00010430

GENERAL LOCATION: East Side of F.M. Highway 324 approximately 1.1 miles Southwest of the intersection of F.M. Highway No. 1336 and F.M. Highway No. 324.

MONUMENT DESCRIPTION: 4" diameter aluminum cap on a 3/4" X 36" steel rod, with a 1/2" rod for metal detection.

NOTES:

HORIZONTAL POSITIONS ARE RELATIVE TO NGS MONUMENT PID BY1106 (REDFIELD 2). GPS ORTHOMETRIC VALUES ARE BASED ON NGVD 88 AND THEY SHOULD BE CONFIRMED DIFFERENTIAL LEVELING TO EXISTING NGS VERTICAL CONTROL.

COORDINATES ESTABLISHED: APRIL 2000



CITY OF LUFKIN

ENGINEERING DEPARTMENT
P. O. DRAWER 190
300 E. SHEPHERD
LUFKIN, TEXAS 79502-0190
PHONE: (409) 633-0414

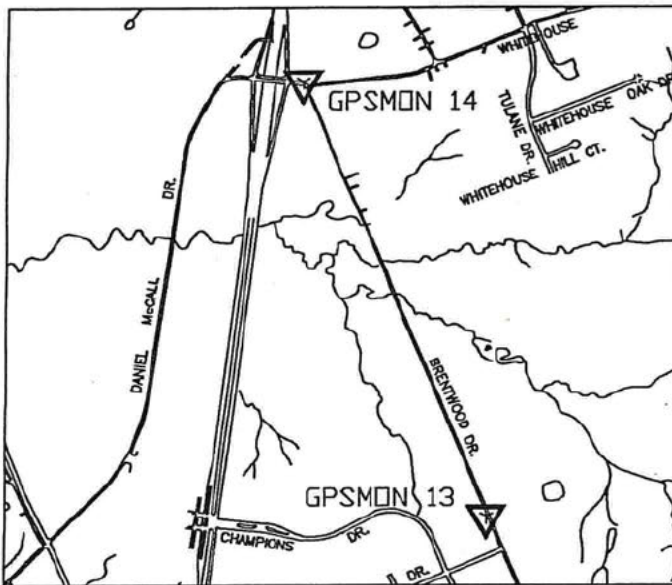
G.P.S. MONUMENTATION

BY: 

DATE: 7-31-00

GOODWIN-LASITER, INC.

NAD -83 U.S. SURVEY FEET



ANDERSON
ELEMENTARY

ELECTRIC POLE

WOODEN FENCE

BRENTWOOD DR.

DRIVEWAY

MONUMENT NO.: 13

CITY MAP NO. 348
AERIAL MAP NO. Q-27
WATER/SEWER MAP NO. M-30

GEODIETIC POSITION NAD83 (1993)

LATITUDE: N31°17'13.08511"

LONGITUDE: W94°43'21.05272"

ELLIPSOID HEIGHT (APPROX.) 63.854 METERS

TEXAS STATE PLANE COORDINATES, CENTRAL ZONE (4203) NAD 83 (U.S. SURVEY FEET) GRID VALUES. TO CONVERT TO SURFACE VALUES MULTIPLY BY THE COMBINED SCALE FACTOR (C.S.F.)

N= 10475990.399 E= 4048424.764 ELEV= 299.80' (GPS) C.S.F.= 1.00010430

GENERAL LOCATION: On the West Side of Brentwood Dr. - Just North of the rear entrance to the School.

MONUMENT DESCRIPTION: 3 1/2" Bronze cap set in 3' concrete monument and reinforced with 1/2" rebar

NOTES:

HORIZONTAL POSITIONS ARE RELATIVE TO NGS MONUMENT PID BY1106 (REDFIELD 2). GPS ORTHOMETRIC VALUES ARE BASED ON NGVD 88 AND THEY SHOULD BE CONFIRMED DIFFERENTIAL LEVELING TO EXISTING NGS VERTICAL CONTROL.

COORDINATES ESTABLISHED: APRIL 2000



CITY OF LUFKIN

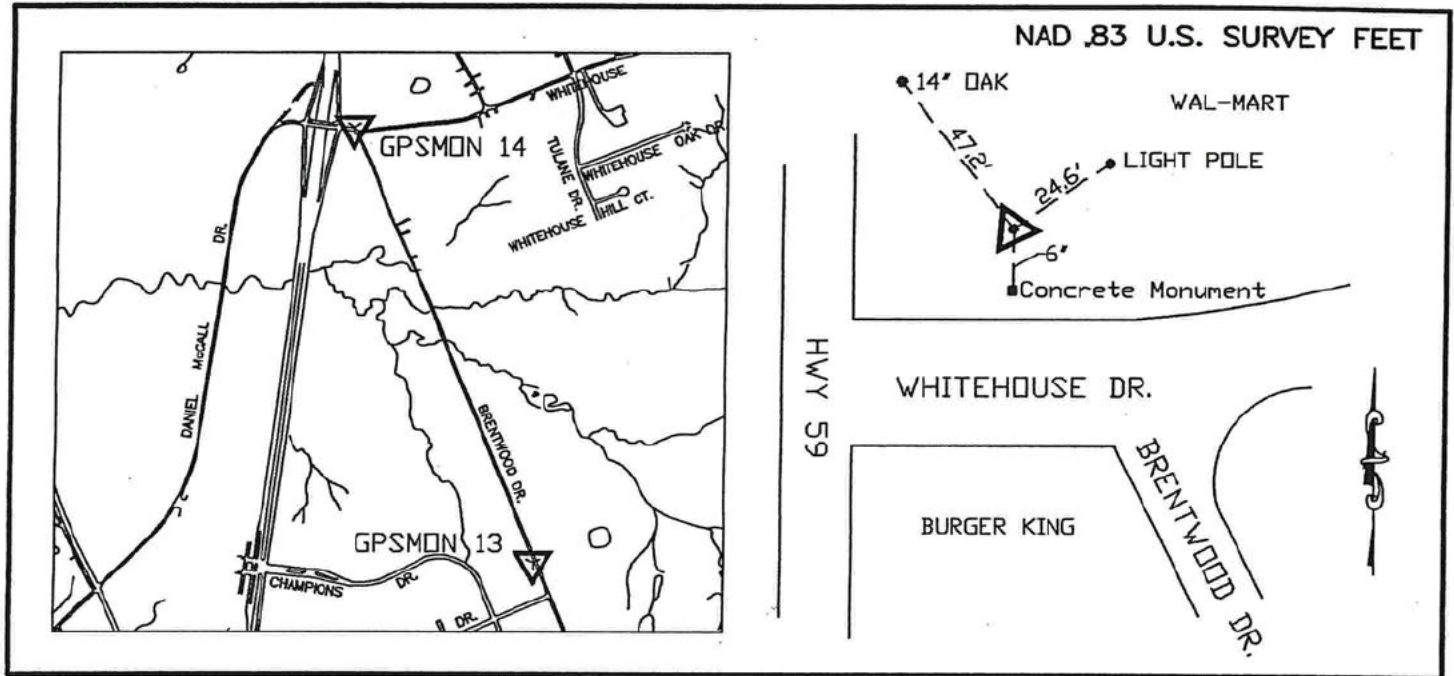
ENGINEERING DEPARTMENT
P. O. DRAWER 190
300 E. SHEPHERD
LUFKIN, TEXAS 79502-0190
PHONE: (409) 633-0414

G.P.S. MONUMENTATION

BY: 

DATE: 7-31-00

GOODWIN-LASITER, INC.



MONUMENT NO.: 14

CITY MAP NO. 348
AERIAL MAP NO. Q-26
WATER/SEWER MAP NO. M-28

GEODIETIC POSITION NAD83 (1993)

LATITUDE: N31°17'51.19751"

LONGITUDE: W94°43'37.22004"

ELLIPSOID HEIGHT (APPROX.) 56.262 METERS

TEXAS STATE PLANE COORDINATES, CENTRAL ZONE (4203) NAD 83 (U.S. SURVEY FEET) GRID VALUES. TO CONVERT TO SURFACE VALUES MULTIPLY BY THE COMBINED SCALE FACTOR (C.S.F.)

N= 10479765.465 E= 4046829.777 ELEV= 274.56' (GPS) C.S.F.= 1.00010430

GENERAL LOCATION: At the Intersection of Whitehouse Dr. & HWY 59 & Brentwood Dr.
On the North Side of Whitehouse Dr. across the street from Burger King - 6" North of a Concrete R.O.W. Monument.

MONUMENT DESCRIPTION: 3 1/2" Bronze cap set in 3' concrete monument and reinforced with 1/2" rebar

NOTES:

HORIZONTAL POSITIONS ARE RELATIVE TO NGS MONUMENT PID BY1106 (REDFIELD 2).
GPS ORTHOMETRIC VALUES ARE BASED ON NGVD 88 AND THEY SHOULD BE CONFIRMED
DIFFERENTIAL LEVELING TO EXISTING NGS VERTICAL CONTROL.

COORDINATES ESTABLISHED: APRIL 2000



CITY OF LUFKIN

ENGINEERING DEPARTMENT
P. O. DRAWER 190
300 E. SHEPHERD
LUFKIN, TEXAS 79502-0190
PHONE: (409) 633-0414

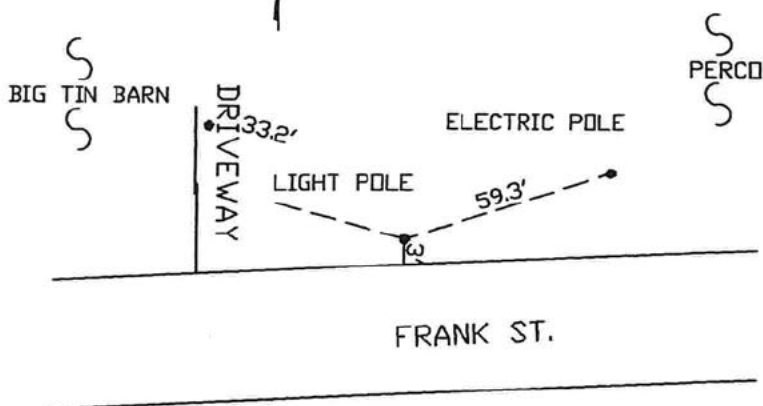
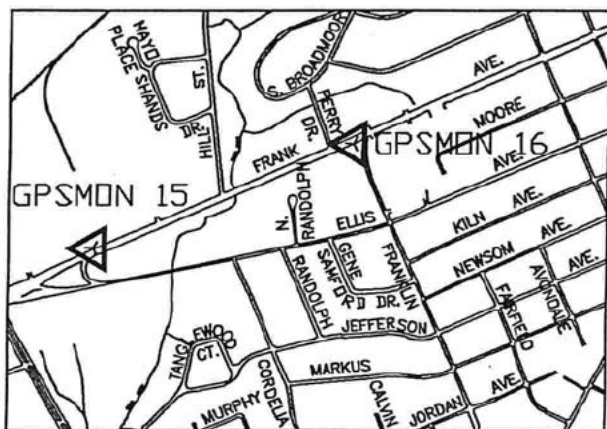
G.P.S. MONUMENTATION

BY: 

DATE: 7-31-00

GOODWIN-LASITER, INC.

NAD 83 U.S. SURVEY FEET



MONUMENT NO.: 15

CITY MAP NO. 356
AERIAL MAP NO. N-20
WATER/SEWER MAP NO. J-21

GEODIETIC POSITION NAD83 (1993)

LATITUDE: N31°20'05.46949"

LONGITUDE: W94°45'01.02570"

ELLIPSOID HEIGHT (APPROX.) 56.469 METERS

TEXAS STATE PLANE COORDINATES, CENTRAL ZONE (4203) NAD 83 (U.S. SURVEY FEET) GRID VALUES. TO CONVERT TO SURFACE VALUES MULTIPLY BY THE COMBINED SCALE FACTOR (C.S.F.)

N= 10492947.762

E= 4038863.099

ELEV= 275.03' (GPS)

C.S.F.= 1.00010430

GENERAL LOCATION: On the North Side of Frank St. — East of the Intersection of Ellis & Frank — East of the eastmost drive of the Big Tin Barn.

MONUMENT DESCRIPTION: 3 1/2" Bronze cap set in 3' concrete monument and reinforced with 1/2" rebar

NOTES:

HORIZONTAL POSITIONS ARE RELATIVE TO NGS MONUMENT PID BY1106 (REDFIELD 2). GPS ORTHOMETRIC VALUES ARE BASED ON NGVD 88 AND THEY SHOULD BE CONFIRMED DIFFERENTIAL LEVELING TO EXISTING NGS VERTICAL CONTROL.

COORDINATES ESTABLISHED: APRIL 2000



CITY OF LUFKIN

ENGINEERING DEPARTMENT
P. O. DRAWER 190
300 E. SHEPHERD
LUFKIN, TEXAS 79502-0190
PHONE: (409) 633-0414

G.P.S. MONUMENTATION

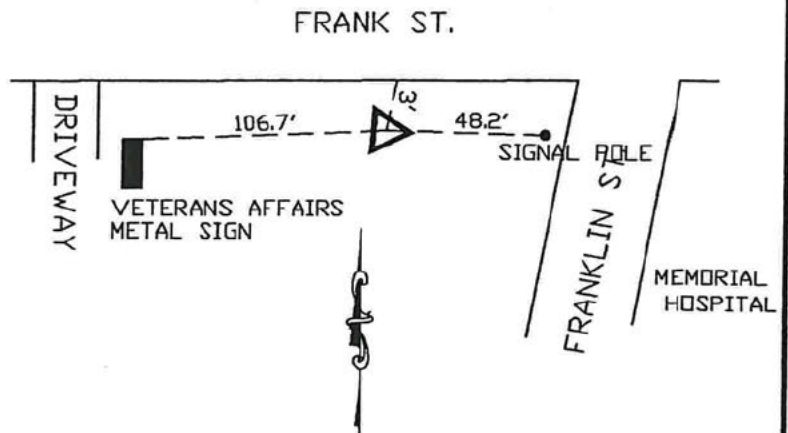
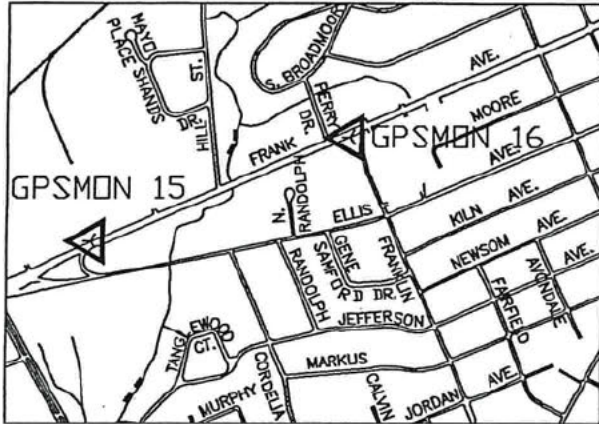
BY: 

DATE: 7-31-00

GOODWIN-LASITER, INC.

NAD 83 U.S. SURVEY FEET

EAST TEXAS
EYE ASSOCIATES



MONUMENT NO.: 16

CITY MAP NO. 356

AERIAL MAP NO. 0-20

WATER/SEWER MAP NO. K-21

GEODIETIC POSITION NAD83 (1993)

LATITUDE: N31°20'12.18476"

LONGITUDE: W94°44'38.83164"

ELLIPSOID HEIGHT (APPROX.) 59.895 METERS

TEXAS STATE PLANE COORDINATES, CENTRAL ZONE (4203) NAD 83 (U.S. SURVEY FEET) GRID VALUES. TO CONVERT TO SURFACE VALUES MULTIPLY BY THE COMBINED SCALE FACTOR (C.S.F.)

N= 10493723.229

E= 4040775.890

ELEV= 286.27' (GPS)

C.S.F.= 1.00010430

GENERAL LOCATION: On the South Side of Frank St. — West of the Intersection of Franklin & Frank

MONUMENT DESCRIPTION: 3 1/2" Bronze cap set in 3' concrete monument and reinforced with 1/2" rebar

NOTES:

HORIZONTAL POSITIONS ARE RELATIVE TO NGS MONUMENT PID BY1106 (REDFIELD 2).
GPS ORTHOMETRIC VALUES ARE BASED ON NGVD 88 AND THEY SHOULD BE CONFIRMED
DIFFERENTIAL LEVELING TO EXISTING NGS VERTICAL CONTROL.

COORDINATES ESTABLISHED: APRIL 2000



CITY OF LUFKIN

ENGINEERING DEPARTMENT
P. O. DRAWER 190
300 E. SHEPHERD
LUFKIN, TEXAS 79502-0190
PHONE: (409) 633-0414

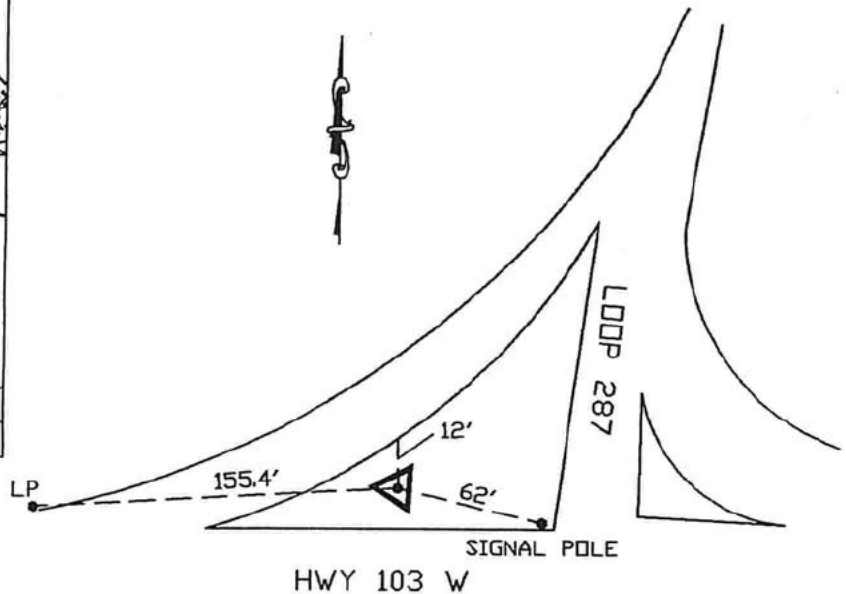
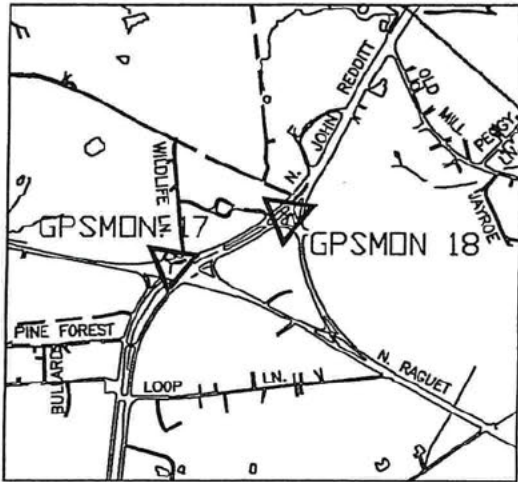
G.P.S. MONUMENTATION

BY: _____

DATE: 7-31-00

GOODWIN-LASITER, INC.

NAD 83 U.S. SURVEY FEET



MONUMENT NO.: 17

CITY MAP NO. 382
AERIAL MAP NO. N-15
WATER/SEWER MAP NO. J-15

GEODIETIC POSITION NAD83 (1993)

LATITUDE: N31°21'41.50676"

LONGITUDE: W94°45'46.37911"

ELLIPSOID HEIGHT (APPROX.) 77.880 METERS

TEXAS STATE PLANE COORDINATES, CENTRAL ZONE (4203) NAD 83 (U.S. SURVEY FEET) GRID VALUES. TO CONVERT TO SURFACE VALUES MULTIPLY BY THE COMBINED SCALE FACTOR (C.S.F.)

N= 10502442.909 E= 4034473.729 ELEV= 345.11' (GPS) C.S.F.= 1.00010430

GENERAL LOCATION: On the west side of Loop 287 at the Intersection of HWY 103
In the northwest median of the Intersection.

MONUMENT DESCRIPTION: 3 1/2" Bronze cap set in 3' concrete monument and reinforced with 1/2" rebar

NOTES:

HORIZONTAL POSITIONS ARE RELATIVE TO NGS MONUMENT PID BY1106 (REDFIELD 2).
GPS ORTHOMETRIC VALUES ARE BASED ON NGVD 88 AND THEY SHOULD BE CONFIRMED
DIFFERENTIAL LEVELING TO EXISTING NGS VERTICAL CONTROL.

COORDINATES ESTABLISHED: APRIL 2000



CITY OF LUFKIN

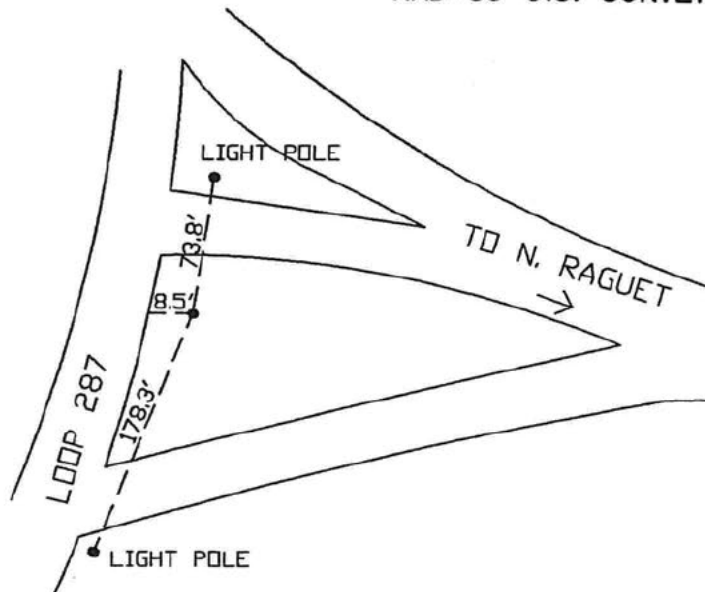
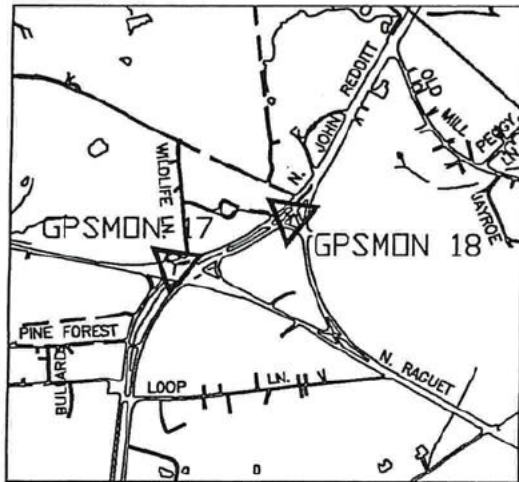
ENGINEERING DEPARTMENT
P. O. DRAWER 190
300 E. SHEPHERD
LUFKIN, TEXAS 79502-0190
PHONE: (409) 633-0414

G.P.S. MONUMENTATION

BY: 
GOODWIN-LASITER, INC.

DATE: 7-31-00

NAD 83 U.S. SURVEY FEET



MONUMENT NO.: 18

CITY MAP NO. 383
AERIAL MAP NO. N-15
WATER/SEWER MAP NO. J-15

GEODIETIC POSITION NAD83 (1993)

LATITUDE: N31°21'44.68051"

LONGITUDE: W94°45'36.23740"

ELLIPSOID HEIGHT (APPROX.) 84.038 METERS

TEXAS STATE PLANE COORDINATES, CENTRAL ZONE (4203) NAD 83 (U.S. SURVEY FEET) GRID VALUES. TO CONVERT TO SURFACE VALUES MULTIPLY BY THE COMBINED SCALE FACTOR (C.S.F.)

N= 10502807.192 E= 4035335.837 ELEV= 368.60' (GPS) C.S.F.= 1.00010430

GENERAL LOCATION: On the East Side of Loop 287 – Northeast of the Intersection of HWY 103 & Loop 287. In an Island Median.

MONUMENT DESCRIPTION: 3 1/2" Bronze cap set in 3' concrete monument and reinforced with 1/2" rebar

NOTES:

HORIZONTAL POSITIONS ARE RELATIVE TO NGS MONUMENT PID BY1106 (REDFIELD 2). GPS ORTHOMETRIC VALUES ARE BASED ON NGVD 88 AND THEY SHOULD BE CONFIRMED DIFFERENTIAL LEVELING TO EXISTING NGS VERTICAL CONTROL.

COORDINATES ESTABLISHED: APRIL 2000



CITY OF LUFKIN

ENGINEERING DEPARTMENT
P. O. DRAWER 190
300 E. SHEPHERD
LUFKIN, TEXAS 79502-0190
PHONE: (409) 633-0414

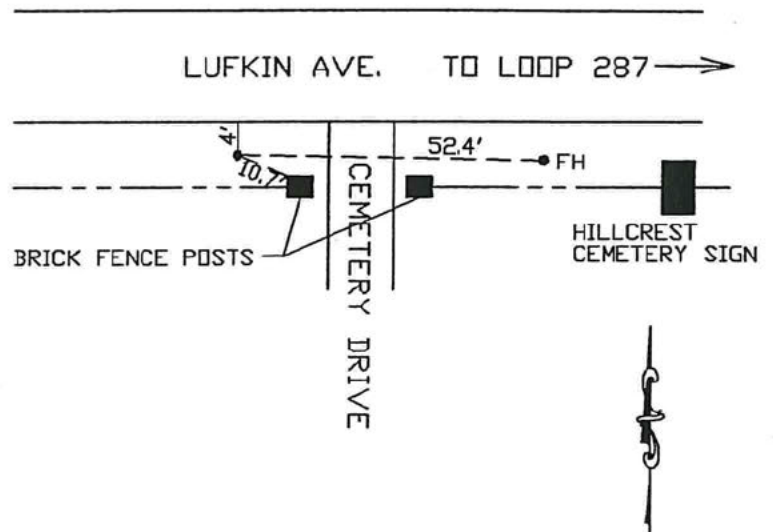
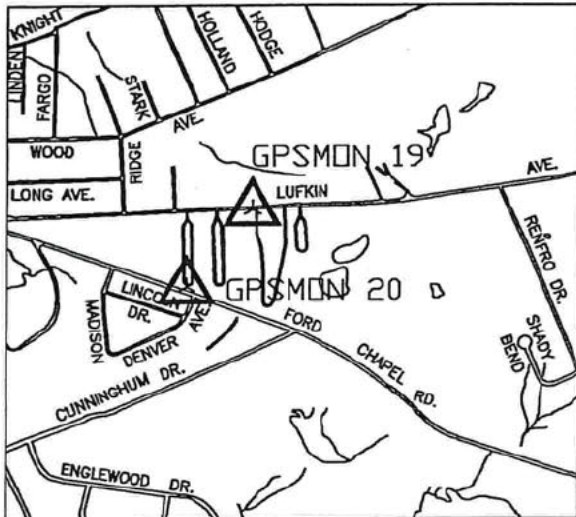
G.P.S. MONUMENTATION

BY: 

DATE: 7-31-00

GOODWIN-LASITER, INC.

NAD 83 U.S. SURVEY FEET



MONUMENT NO.: 19

CITY MAP NO. 392
AERIAL MAP NO. S-20
O-20

GEODIETIC POSITION NAD83 (1993)

LATITUDE: N31°20'09.24476"

LONGITUDE: W94°42'11.05009"

ELLIPSOID HEIGHT (APPROX.) 80.068 METERS

TEXAS STATE PLANE COORDINATES, CENTRAL ZONE (4203) NAD 83 (U.S. SURVEY FEET) GRID VALUES. TO CONVERT TO SURFACE VALUES MULTIPLY BY THE COMBINED SCALE FACTOR (C.S.F.)

N= 10494072.571

E= 4053590.426

ELEV= 355.83' (GPS) C.S.F.= 1.00010430

GENERAL LOCATION: On the South Side of Lufkin Ave. — Near the driveway for the west entrance of the HILLCREST Cemetery — Across from the white ware-houses.

MONUMENT DESCRIPTION: 3 1/2" Bronze cap set in 3' concrete monument and reinforced with 1/2" rebar

NOTES:

HORIZONTAL POSITIONS ARE RELATIVE TO NGS MONUMENT PID BY1106 (REDFIELD 2). GPS ORTHOMETRIC VALUES ARE BASED ON NGVD 88 AND THEY SHOULD BE CONFIRMED DIFFERENTIAL LEVELING TO EXISTING NGS VERTICAL CONTROL.

COORDINATES ESTABLISHED: APRIL 2000



CITY OF LUFKIN

ENGINEERING DEPARTMENT
P. O. DRAWER 190
300 E. SHEPHERD
LUFKIN, TEXAS 79502-0190
PHONE: (409) 633-0414

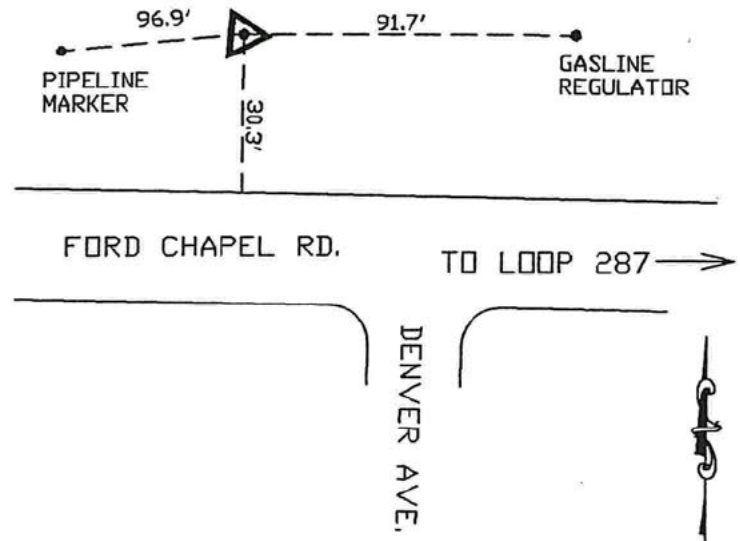
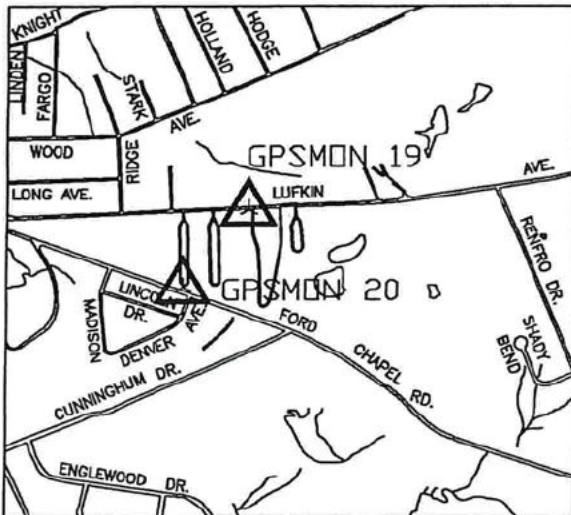
G.P.S. MONUMENTATION

BY: [REDACTED]

DATE: 7-31-00

GOODWIN-LASITER, INC.

NAD -83 U.S. SURVEY FEET



MONUMENT NO.: 20

CITY MAP NO. 392
AERIAL MAP NO. S-20
WATER/SEWER MAP NO. O-21

GEODIETIC POSITION NAD83 (1993)

LATITUDE: N31°20'03.77912"

LONGITUDE: W94°42'16.92617"

ELLIPSOID HEIGHT (APPROX.) 74.293 METERS

TEXAS STATE PLANE COORDINATES, CENTRAL ZONE (4203) NAD 83 (U.S. SURVEY FEET) GRID VALUES. TO CONVERT TO SURFACE VALUES MULTIPLY BY THE COMBINED SCALE FACTOR (C.S.F.)

N= 10493495.279 E= 4053109.424 ELEV= 333.60' (GPS) C.S.F.= 1.00010430

GENERAL LOCATION: On the North Side of Ford Chapel Road - West of Denver Ave.

MONUMENT DESCRIPTION: 3 1/2" Bronze cap set in 3' concrete monument and reinforced with 1/2" rebar

NOTES:

HORIZONTAL POSITIONS ARE RELATIVE TO NGS MONUMENT PID BY1106 (REDFIELD 2).
GPS ORTHOMETRIC VALUES ARE BASED ON NGVD 88 AND THEY SHOULD BE CONFIRMED
DIFFERENTIAL LEVELING TO EXISTING NGS VERTICAL CONTROL.

COORDINATES ESTABLISHED: APRIL 2000



CITY OF LUFKIN

ENGINEERING DEPARTMENT
P. O. DRAWER 190
300 E. SHEPHERD
LUFKIN, TEXAS 79502-0190
PHONE: (409) 633-0414

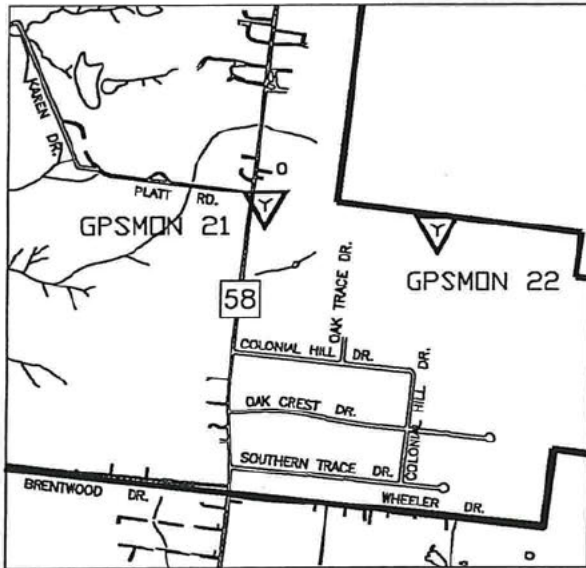
G.P.S. MONUMENTATION

BY: [REDACTED]

GOODWIN-LASITER, INC.

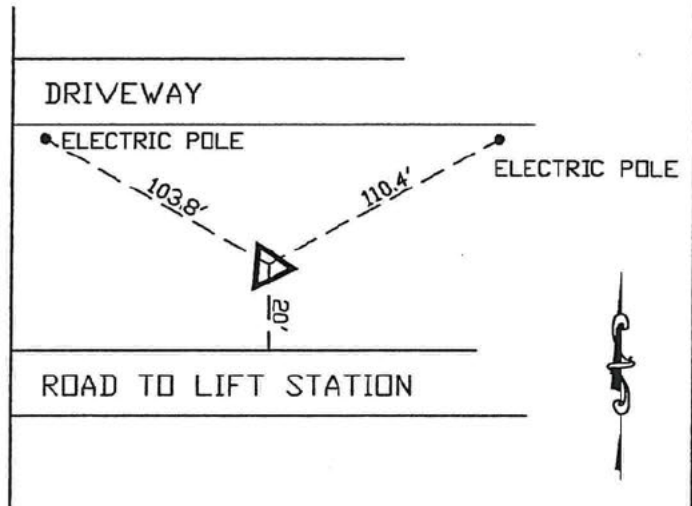
DATE: 7-31-00

NAD 83 U.S. SURVEY FEET



↑ TO LOOP 287
↓ TO BRENTWOOD DR.

F.M. 58



MONUMENT NO.: 21

CITY MAP NO. 378
AERIAL MAP NO. S-27
WATER/SEWER MAP NO. 0-29

GEODIETIC POSITION NAD83 (1993)

LATITUDE: N31°17'18.84303"

LONGITUDE: W94°42'27.32911"

ELLIPSOID HEIGHT (APPROX.) 69.094 METERS

TEXAS STATE PLANE COORDINATES, CENTRAL ZONE (4203) NAD 83 (U.S. SURVEY FEET) GRID VALUES. TO CONVERT TO SURFACE VALUES MULTIPLY BY THE COMBINED SCALE FACTOR (C.S.F.)

N= 10476806.726

E= 4053050.818

ELEV= 316.74' (GPS)

C.S.F.= 1.00010430

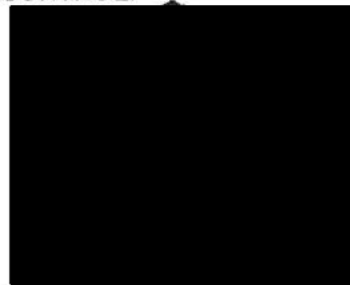
GENERAL LOCATION: East side of F.M. 58 – North of the Oak Trace Subdivision
On the road to the F.M. 58 Lift Station

MONUMENT DESCRIPTION: 3 1/2" Bronze cap set in 3' concrete monument and reinforced with 1/2" rebar

NOTES:

HORIZONTAL POSITIONS ARE RELATIVE TO NGS MONUMENT PID BY1106 (REDFIELD 2).
GPS ORTHOMETRIC VALUES ARE BASED ON NGVD 88 AND THEY SHOULD BE CONFIRMED
DIFFERENTIAL LEVELING TO EXISTING NGS VERTICAL CONTROL.

COORDINATES ESTABLISHED: APRIL 2000



CITY OF LUFKIN

ENGINEERING DEPARTMENT
P. O. DRAWER 190
300 E. SHEPHERD
LUFKIN, TEXAS 79502-0190
PHONE: (409) 633-0414

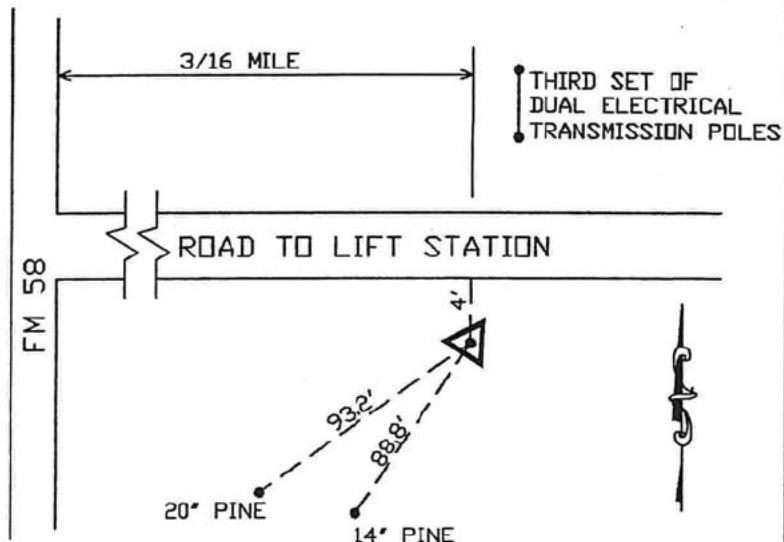
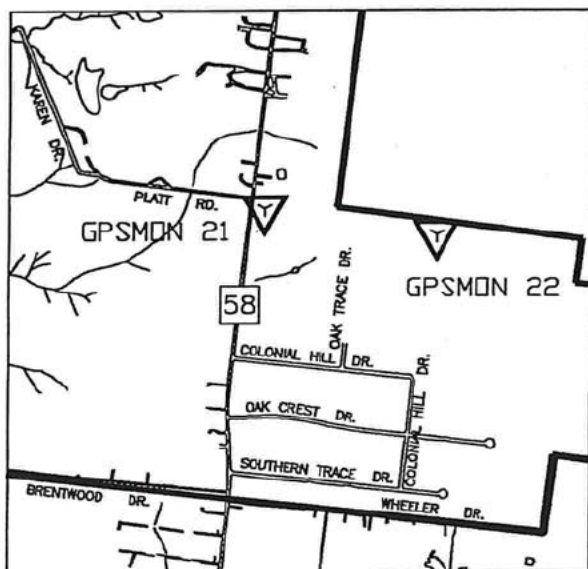
G.P.S. MONUMENTATION

BY: 

DATE: 7-31-00

GOODWIN-LASITER, INC.

NAD 83 U.S. SURVEY FEET



MONUMENT NO.: 22

CITY MAP NO. 378
AERIAL MAP NO. S-27
WATER/SEWER MAP NO. P-29

GEODIETIC POSITION NAD83 (1993)

LATITUDE: N31°17'15.91378"

LONGITUDE: W94°42'10.19964"

ELLIPSOID HEIGHT (APPROX.) 60.489 METERS

TEXAS STATE PLANE COORDINATES, CENTRAL ZONE (4203) NAD 83 (U.S. SURVEY FEET) GRID VALUES. TO CONVERT TO SURFACE VALUES MULTIPLY BY THE COMBINED SCALE FACTOR (C.S.F.)

N= 10476586.313 E= 4054550.128 ELEV= 288.52' (GPS) C.S.F.= 1.00010430

GENERAL LOCATION: Approximately 0.2 miles east of F. M. Road 58 along an existing transmission line on the south side of road to Lift Station. It is between the second and third set of poles for the electrical transmission lines.

MONUMENT DESCRIPTION: 3 1/2" Bronze cap set in 3' concrete monument and reinforced with 1/2" rebar

NOTES:

HORIZONTAL POSITIONS ARE RELATIVE TO NGS MONUMENT PID BY1106 (REDFIELD 2). GPS ORTHOMETRIC VALUES ARE BASED ON NGVD 88 AND THEY SHOULD BE CONFIRMED DIFFERENTIAL LEVELING TO EXISTING NGS VERTICAL CONTROL.

COORDINATES ESTABLISHED: APRIL 2000



CITY OF LUFKIN

ENGINEERING DEPARTMENT
P. O. DRAWER 190
300 E. SHEPHERD
LUFKIN, TEXAS 79502-0190
PHONE: (409) 633-0414

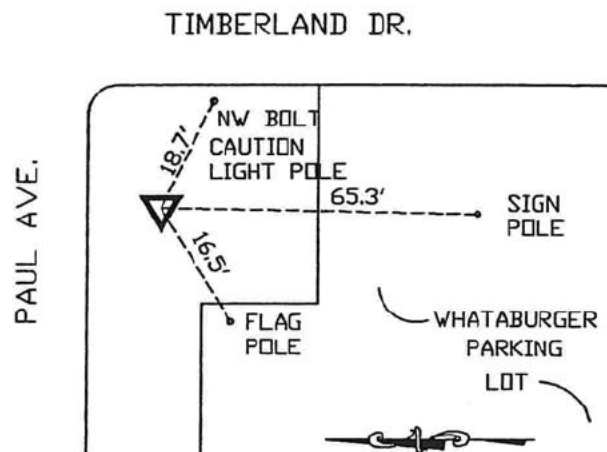
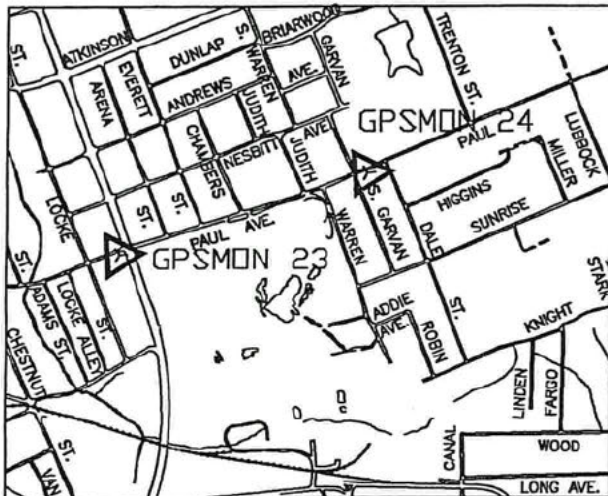
G.P.S. MONUMENTATION

BY: 

DATE: 7-31-00

GOODWIN-LASITER, INC.

NAD 83 U.S. SURVEY FEET



MONUMENT NO.: 23

CITY MAP NO. 387
AERIAL MAP NO. 0-19
WATER/SEWER MAP NO. N-20

GEODIETIC POSITION NAD83 (1993)

LATITUDE: N31°20'30.35308"

LONGITUDE: W94°43'05.58500"

ELLIPSOID HEIGHT (APPROX.) 65.784 METERS

TEXAS STATE PLANE COORDINATES, CENTRAL ZONE (4203) NAD 83 (U.S. SURVEY FEET) GRID VALUES. TO CONVERT TO SURFACE VALUES MULTIPLY BY THE COMBINED SCALE FACTOR (C.S.F.)

N= 10495963.596 E= 4048759.482 ELEV= 305.63' (GPS) C.S.F.= 1.00010430

GENERAL LOCATION: South side of Paul Ave. - West side of Timberland Dr.

MONUMENT DESCRIPTION: 4" dia. aluminum cap on a 3/4" x 36" steel rod, with a 1/2" rod for metal detection

NOTES:

HORIZONTAL POSITIONS ARE RELATIVE TO NGS MONUMENT PID BY1106 (REDFIELD 2).
GPS ORTHOMETRIC VALUES ARE BASED ON NGVD 88 AND THEY SHOULD BE CONFIRMED
DIFFERENTIAL LEVELING TO EXISTING NGS VERTICAL CONTROL.

COORDINATES ESTABLISHED: APRIL 2000



CITY OF LUFKIN

ENGINEERING DEPARTMENT
P. O. DRAWER 190
300 E. SHEPHERD
LUFKIN, TEXAS 79502-0190
PHONE: (409) 633-0414

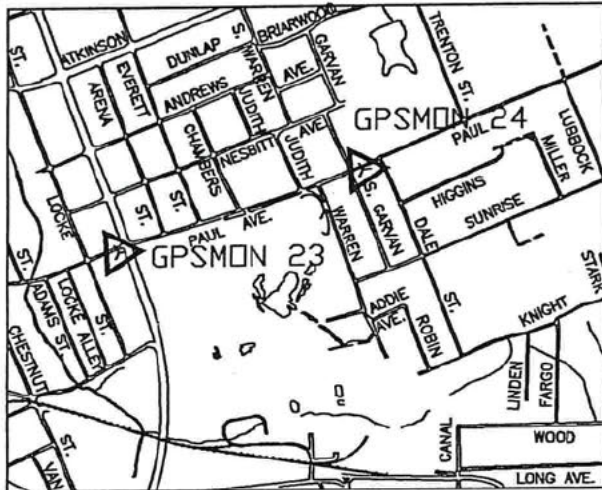
G.P.S. MONUMENTATION

BY: [REDACTED]

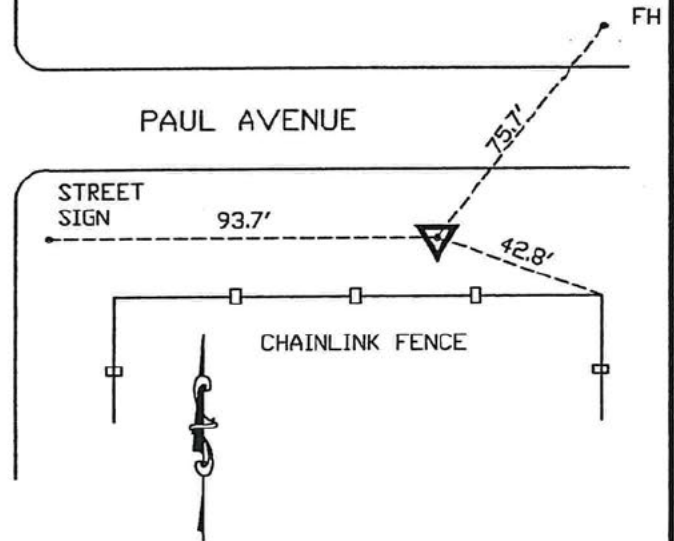
GOODWIN-LASITER, INC.

DATE: 7-31-00

NAD 83 U.S. SURVEY FEET



GARVAN STREET



MONUMENT NO.: 24

CITY MAP NO. 387
AERIAL MAP NO. R-19
WATER/SEWER MAP NO. 0-19

GEODIETIC POSITION NAD83 (1993)

LATITUDE: N31°20'35.52042"

LONGITUDE: W94°42'43.64608"

ELLIPSOID HEIGHT (APPROX.) 68.153 METERS

TEXAS STATE PLANE COORDINATES, CENTRAL ZONE (4203) NAD 83 (U.S. SURVEY FEET) GRID VALUES. TO CONVERT TO SURFACE VALUES MULTIPLY BY THE COMBINED SCALE FACTOR (C.S.F.)

N= 10496581.055 E= 4050633.154 ELEV= 313.41' (GPS) C.S.F.= 1.00010430

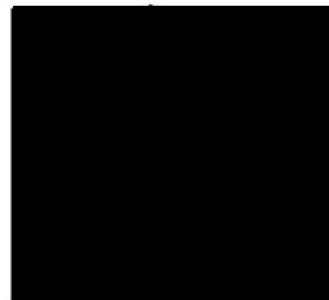
GENERAL LOCATION: East side of Garvan St. — South side of Paul Ave.

MONUMENT DESCRIPTION: 4" dia. aluminum cap on a 3/4" x 36" steel rod, with a 1/2" rod for metal detection

NOTES:

HORIZONTAL POSITIONS ARE RELATIVE TO NGS MONUMENT PID BY1106 (REDFIELD 2).
GPS ORTHOMETRIC VALUES ARE BASED ON NGVD 88 AND THEY SHOULD BE CONFIRMED
DIFFERENTIAL LEVELING TO EXISTING NGS VERTICAL CONTROL.

COORDINATES ESTABLISHED: APRIL 2000



CITY OF LUFKIN

ENGINEERING DEPARTMENT
P. O. DRAWER 190
300 E. SHEPHERD
LUFKIN, TEXAS 79502-0190
PHONE: (409) 633-0414

G.P.S. MONUMENTATION

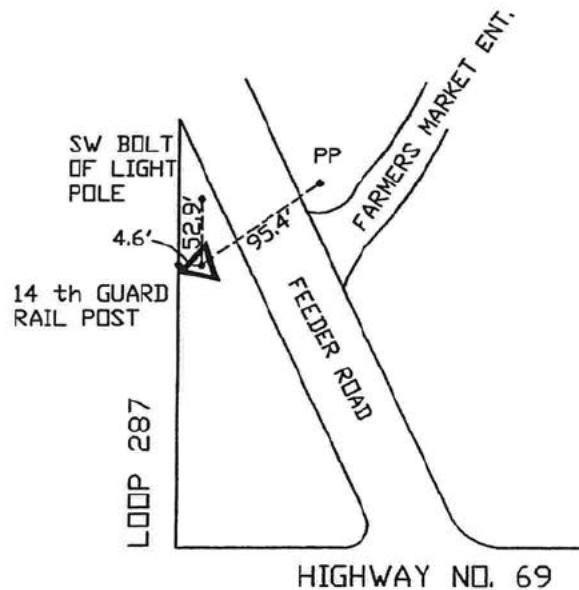
BY: 

DATE: 7-31-00

GOODWIN-LASITER, INC.



NAD 83 U.S. SURVEY FEET



MONUMENT NO.: 25

CITY MAP NO. 382
AERIAL MAP NO. N-15
WATER/SEWER MAP NO. J-15

GEODIETIC POSITION NAD83 (1993)

LATITUDE: N31°19'16.06037"

LONGITUDE: W94°41'52.37314"

ELLIPSOID HEIGHT (APPROX.) 74.126 METERS

TEXAS STATE PLANE COORDINATES, CENTRAL ZONE (4203) NAD 83 (U.S. SURVEY FEET) GRID VALUES. TO CONVERT TO SURFACE VALUES MULTIPLY BY THE COMBINED SCALE FACTOR (C.S.F.)

N= 10488787.962 E= 4055480.163 ELEV= 333.13' (GPS) C.S.F.= 1.00010430

GENERAL LOCATION: East side of State Highway Loop NO. 287.
North side of U.S. Highway No. 69.

MONUMENT DESCRIPTION: 4" dia. aluminum cap on a 3/4" x 36" steel rod, with a 1/2" rod for metal detection

NOTES:

HORIZONTAL POSITIONS ARE RELATIVE TO NGS MONUMENT PID BY1106 (REDFIELD 2).
GPS ORTHOMETRIC VALUES ARE BASED ON NGVD 88 AND THEY SHOULD BE CONFIRMED
DIFFERENTIAL LEVELING TO EXISTING NGS VERTICAL CONTROL.

COORDINATES ESTABLISHED: APRIL 2000



CITY OF LUFKIN

ENGINEERING DEPARTMENT
P. O. DRAWER 190
300 E. SHEPHERD
LUFKIN, TEXAS 79502-0190
PHONE: (409) 633-0414

G.P.S. MONUMENTATION

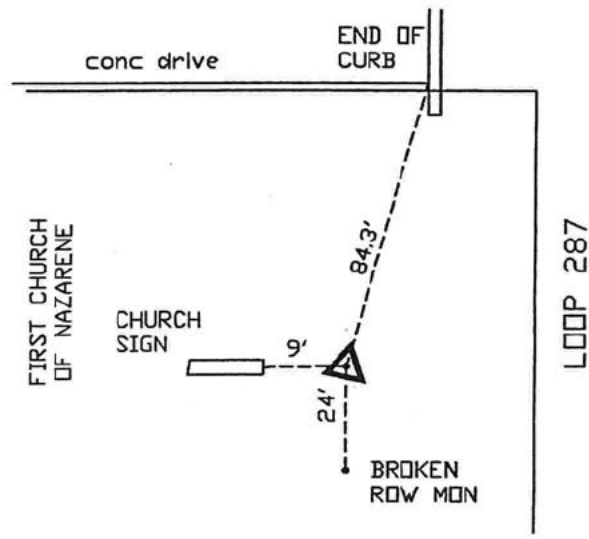
BY:



DATE: 7-31-00

GOODWIN-LASITER, INC.

NAD 83 U.S. SURVEY FEET



MONUMENT NO.: 26

CITY MAP NO. 382
AERIAL MAP NO. N-15
WATER/SEWER MAP NO. J-15

GEODIETIC POSITION NAD83 (1993)

LATITUDE: N31°19'29.35595"

LONGITUDE: W94°41'38.42647"

ELLIPSOID HEIGHT (APPROX.) 74.844 METERS

TEXAS STATE PLANE COORDINATES, CENTRAL ZONE (4203) NAD 83 (U.S. SURVEY FEET) GRID VALUES. TO CONVERT TO SURFACE VALUES MULTIPLY BY THE COMBINED SCALE FACTOR (C.S.F.)

N= 10490190.830 E= 4056620.209 ELEV= 335.48' (GPS) C.S.F.= 1.00010430

GENERAL LOCATION: West side of U.S. Highway Loop No. 287
Approximately 0.5 miles North of U.S. Highway No. 69

MONUMENT DESCRIPTION: 4" dia. aluminum cap on a 3/4" x 36" steel rod, with a 1/2" rod for metal detection

NOTES:

HORIZONTAL POSITIONS ARE RELATIVE TO NGS MONUMENT PID BY1106 (REDFIELD 2).
GPS ORTHOMETRIC VALUES ARE BASED ON NGVD 88 AND THEY SHOULD BE CONFIRMED
DIFFERENTIAL LEVELING TO EXISTING NGS VERTICAL CONTROL

COORDINATES ESTABLISHED: APRIL 2000



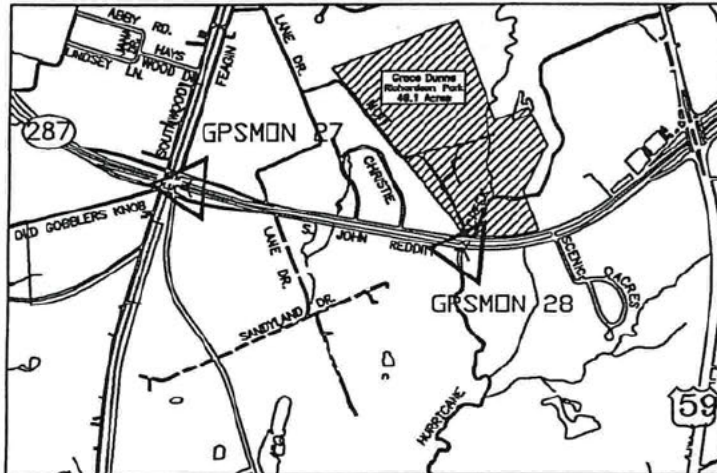
CITY OF LUFKIN

ENGINEERING DEPARTMENT
P. O. DRAWER 190
300 E. SHEPHERD
LUFKIN, TEXAS 79502-0190
PHONE: (409) 633-0414

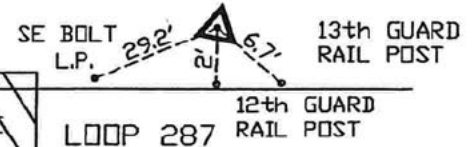
G.P.S. MONUMENTATION

BY:  DATE: 7-31-00
GOODWIN-LASITER, INC.

NAD 83 U.S. SURVEY FEET



FEAGIN DR



MONUMENT NO.: 27

CITY MAP NO. 350
AERIAL MAP NO. 0-24
WATER/SEWER MAP NO. L-26

GEOIDETIC POSITION NAD83 (1993)

LATITUDE: N31°18'32.39684"

LONGITUDE: W94°44'31.67826"

ELLIPSOID HEIGHT (APPROX.) 66.209 METERS

TEXAS STATE PLANE COORDINATES, CENTRAL ZONE (4203) NAD 83 (U.S. SURVEY FEET) GRID VALUES. TO CONVERT TO SURFACE VALUES MULTIPLY BY THE COMBINED SCALE FACTOR (C.S.F.)

N= 10483685.067 E= 4041902.002 ELEV= 307.11' (GPS) C.S.F.= 1.00010430

GENERAL LOCATION: North side of State Highway Loop No. 287.
East side of Feagin Dr.

MONUMENT DESCRIPTION: 4" dia. aluminum cap on a 3/4" x 36" steel rod, with a 1/2" rod for metal detection

NOTES:

HORIZONTAL POSITIONS ARE RELATIVE TO NGS MONUMENT PID BY1106 (REDFIELD 2).
GPS ORTHOMETRIC VALUES ARE BASED ON NGVD 88 AND THEY SHOULD BE CONFIRMED
DIFFERENTIAL LEVELING TO EXISTING NGS VERTICAL CONTROL

COORDINATES ESTABLISHED: APRIL 2000



CITY OF LUFKIN

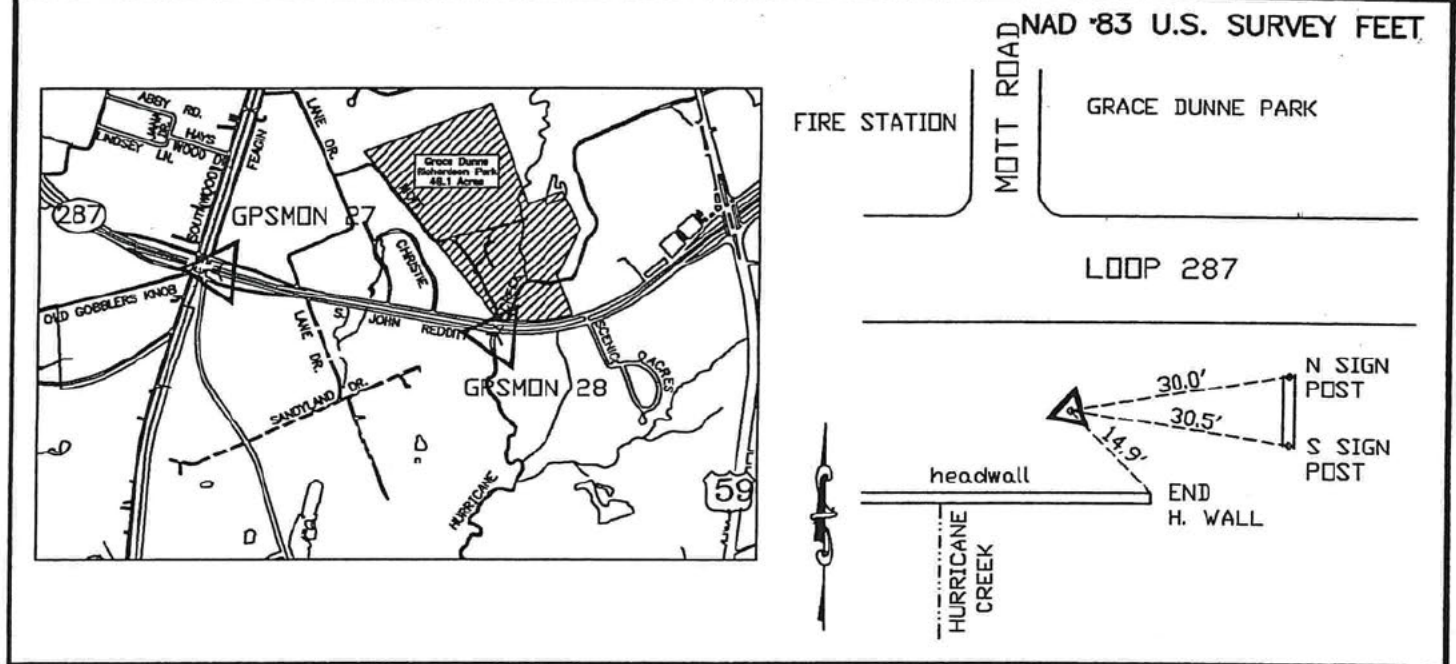
ENGINEERING DEPARTMENT
P. O. DRAWER 190
300 E. SHEPHERD
LUFKIN, TEXAS 79502-0190
PHONE: (409) 633-0414

G.P.S. MONUMENTATION

BY: 

DATE: 7-31-00

GOODWIN-LASITER, INC.



MONUMENT NO.: 28

CITY MAP NO. 350
 AERIAL MAP NO. P-24
 WATER/SEWER MAP NO. M-26

GEODIETIC POSITION NAD83 (1993)

LATITUDE: N31°18'25.09549"

LONGITUDE: W94°44'01.82992"

ELLIPSOID HEIGHT (APPROX.) 48.363 METERS

TEXAS STATE PLANE COORDINATES, CENTRAL ZONE (4203) NAD 83 (U.S. SURVEY FEET) GRID VALUES. TO CONVERT TO SURFACE VALUES MULTIPLY BY THE COMBINED SCALE FACTOR (C.S.F.)

N= 10483078.494 E= 4044525.082 ELEV= 248.59' (GPS) C.S.F.= 1.00010430

GENERAL LOCATION: South side of State Highway Loop No. 287.
 East side of Mott Road (projection)

MONUMENT DESCRIPTION: 4" dia. aluminum cap on a 3/4" x 36" steel rod, with a 1/2" rod for metal detection

NOTES:

HORIZONTAL POSITIONS ARE RELATIVE TO NGS MONUMENT PID BY1106 (REDFIELD 2).
 GPS ORTHOMETRIC VALUES ARE BASED ON NGVD 88 AND THEY SHOULD BE CONFIRMED
 DIFFERENTIAL LEVELING TO EXISTING NGS VERTICAL CONTROL

COORDINATES ESTABLISHED: APRIL 2000



CITY OF LUFKIN

ENGINEERING DEPARTMENT
 P. O. DRAWER 190
 300 E. SHEPHERD
 LUFKIN, TEXAS 79502-0190
 PHONE: (409) 633-0414

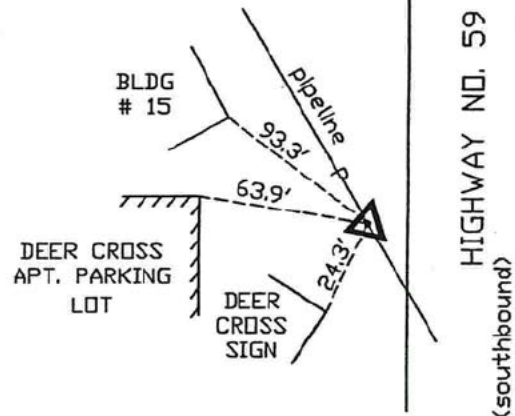
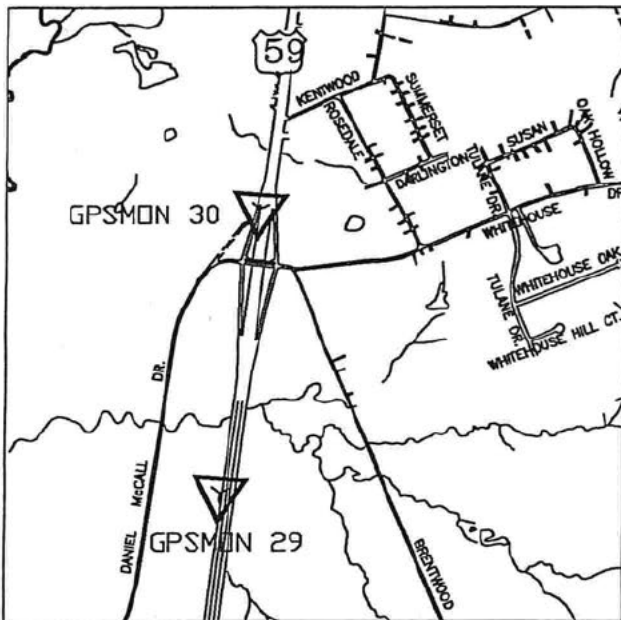
G.P.S. MONUMENTATION

BY: _____

DATE: 7-31-00

GOODWIN-LASITER, INC.

NAD '83 U.S. SURVEY FEET



MONUMENT NO.: 29

CITY MAP NO. 348
AERIAL MAP NO. Q-26
WATER/SEWER MAP NO. M-28

GEODIETIC POSITION NAD83 (1993)

LATITUDE: N31°17'31.90131"

LONGITUDE: W94°43'45.39958"

ELLIPSOID HEIGHT (APPROX.) 49.744 METERS

TEXAS STATE PLANE COORDINATES, CENTRAL ZONE (4203) NAD 83 (U.S. SURVEY FEET) GRID VALUES. TO CONVERT TO SURFACE VALUES MULTIPLY BY THE COMBINED SCALE FACTOR (C.S.F.)

N= 10477782.622

E= 4046219.223

ELEV= 253.19' (GPS)

C.S.F.= 1.00010430

GENERAL LOCATION: West side of U.S. Highway No. 59 (South)
Approximately 0.5 mi. South of Daniel McCall Dr. (overpass)

MONUMENT DESCRIPTION: 4" dia. aluminum cap on a 3/4" x 36" steel rod, with a 1/2" rod for metal detection

NOTES:

HORIZONTAL POSITIONS ARE RELATIVE TO NGS MONUMENT PID BY1106 (REDFIELD 2).
GPS ORTHOMETRIC VALUES ARE BASED ON NGVD 88 AND THEY SHOULD BE CONFIRMED
DIFFERENTIAL LEVELING TO EXISTING NGS VERTICAL CONTROL.

COORDINATES ESTABLISHED: APRIL 2000



CITY OF LUFKIN

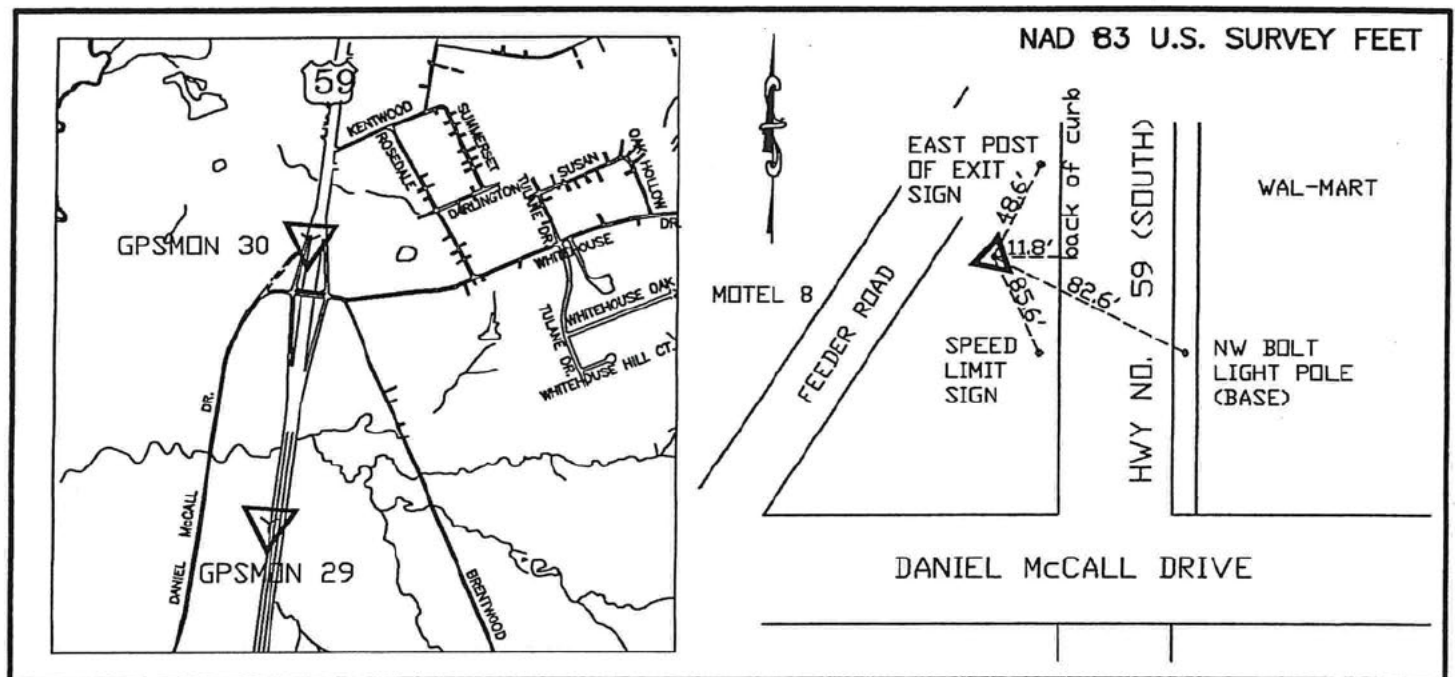
ENGINEERING DEPARTMENT
P. O. DRAWER 190
300 E. SHEPHERD
LUFKIN, TEXAS 79502-0190
PHONE: (409) 633-0414

G.P.S. MONUMENTATION

BY: [REDACTED]

DATE: 7-31-00

GOODWIN-LASITER, INC.



MONUMENT NO.: 30

CITY MAP NO. 348
AERIAL MAP NO. Q-26
WATER/SEWER MAP NO. M-28

GEODIETIC POSITION NAD83 (1993)

LATITUDE: N31°17'56.19772"

LONGITUDE: W94°43'40.18431"

ELLIPSOID HEIGHT (APPROX.) 52.775 METERS

TEXAS STATE PLANE COORDINATES, CENTRAL ZONE (4203) NAD 83 (U.S. SURVEY FEET) GRID VALUES. TO CONVERT TO SURFACE VALUES MULTIPLY BY THE COMBINED SCALE FACTOR (C.S.F.)

N= 10480257.061 E= 4046547.486 ELEV= 263.11' (GPS) C.S.F.= 1.00010430

GENERAL LOCATION: West side of U.S. Highway No. 59 (South)
North side of Daniel McCall Dr. (overpass)

MONUMENT DESCRIPTION: 4" dia. aluminum cap on a 3/4" x 36" steel rod, with a 1/2" rod for metal detection

NOTES:

HORIZONTAL POSITIONS ARE RELATIVE TO NGS MONUMENT PID BY1106 (REDFIELD 2).
GPS ORTHOMETRIC VALUES ARE BASED ON NGVD 88 AND THEY SHOULD BE CONFIRMED
DIFFERENTIAL LEVELING TO EXISTING NGS VERTICAL CONTROL.

COORDINATES ESTABLISHED: APRIL 2000



CITY OF LUFKIN

ENGINEERING DEPARTMENT
P. O. DRAWER 190
300 E. SHEPHERD
LUFKIN, TEXAS 79502-0190
PHONE: (409) 633-0414

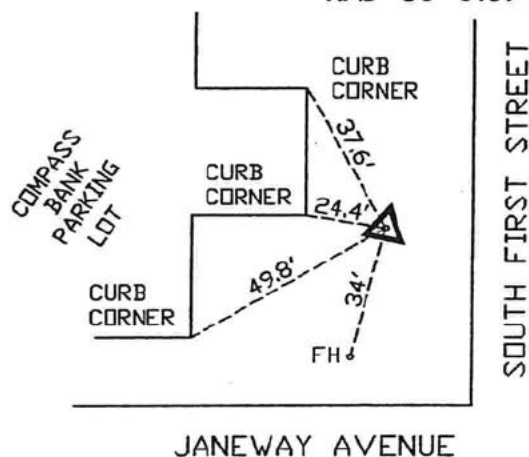
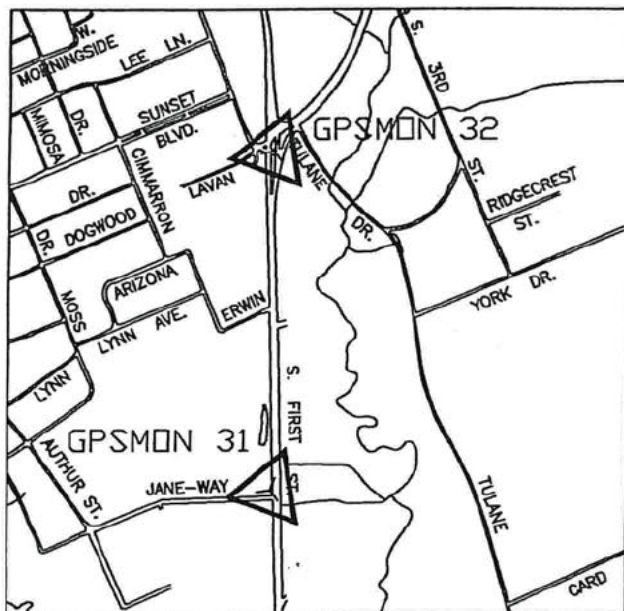
G.P.S. MONUMENTATION

BY: 

DATE: 7-31-00

GOODWIN-LASITER, INC.

NAD '83 U.S. SURVEY FEET



MONUMENT NO.: 31

CITY MAP NO. 390
AERIAL MAP NO. Q-23
WATER/SEWER MAP NO. M-24

GEODIETIC POSITION NAD83 (1993)

LATITUDE: N31°19'02.25367"

LONGITUDE: W94°43'40.46907"

ELLIPSOID HEIGHT (APPROX.) 51.805 METERS

TEXAS STATE PLANE COORDINATES, CENTRAL ZONE (4203) NAD 83 (U.S. SURVEY FEET) GRID VALUES. TO CONVERT TO SURFACE VALUES MULTIPLY BY THE COMBINED SCALE FACTOR (C.S.F.)

N= 10486921.273 E= 4046186.647 ELEV= 259.85' (GPS) C.S.F.= 1.00010430

GENERAL LOCATION: West side of South First St. and north of Janeway Ave.

MONUMENT DESCRIPTION: 4" dia. aluminum cap on a 3/4" x 36" steel rod, with a 1/2" rod for metal detection

NOTES:

HORIZONTAL POSITIONS ARE RELATIVE TO NGS MONUMENT PID BY1106 (REDFIELD 2).
GPS ORTHOMETRIC VALUES ARE BASED ON NGVD 88 AND THEY SHOULD BE CONFIRMED
DIFFERENTIAL LEVELING TO EXISTING NGS VERTICAL CONTROL.

COORDINATES ESTABLISHED: APRIL 2000



CITY OF LUFKIN

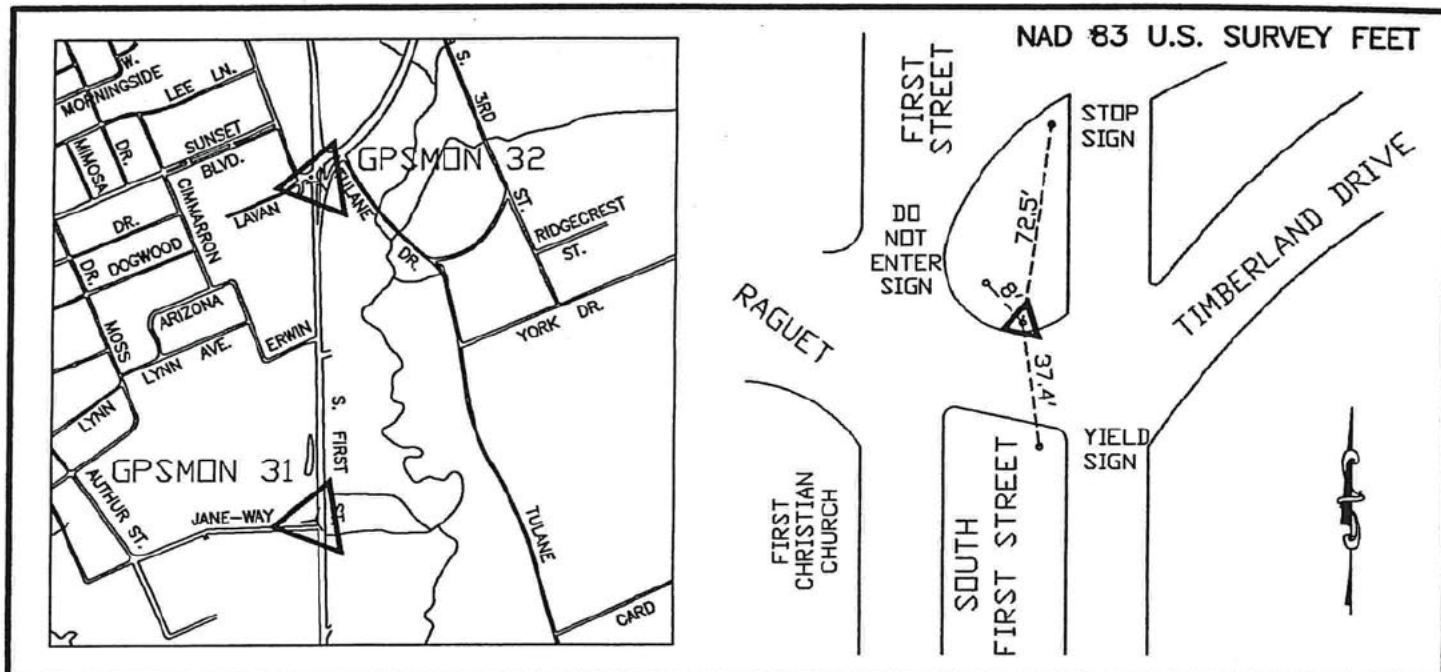
ENGINEERING DEPARTMENT
P. O. DRAWER 190
300 E. SHEPHERD
LUFKIN, TEXAS 79502-0190
PHONE: (409) 633-0414

G.P.S. MONUMENTATION

BY: 

DATE: 7-13-00

GOODWIN-LASITER, INC.



MONUMENT NO.: 32

CITY MAP NO. 390
AERIAL MAP NO. Q-22
WATER/SEWER MAP NO. M-23

GEODIETIC POSITION NAD83 (1993)

LATITUDE: N31°19'26.05845"

LONGITUDE: W94°43'39.00546"

ELLIPSOID HEIGHT (APPROX.) 56.813 METERS

TEXAS STATE PLANE COORDINATES, CENTRAL ZONE (4203) NAD 83 (U.S. SURVEY FEET) GRID VALUES. TO CONVERT TO SURFACE VALUES MULTIPLY BY THE COMBINED SCALE FACTOR (C.S.F.)

N= 10489329.725

E= 4046192.284

ELEV= 276.25' (GPS)

C.S.F.= 1.00010430

GENERAL LOCATION: In the median (island) at the intersection of Timberland Dr. South First St. and Raguet St.

MONUMENT DESCRIPTION: 4" dia. aluminum cap on a 3/4" x 36" steel rod, with a 1/2" rod for metal detection

NOTES:

HORIZONTAL POSITIONS ARE RELATIVE TO NGS MONUMENT PID BY1106 (REDFIELD 2). GPS ORTHOMETRIC VALUES ARE BASED ON NGVD 88 AND THEY SHOULD BE CONFIRMED DIFFERENTIAL LEVELING TO EXISTING NGS VERTICAL CONTROL.

COORDINATES ESTABLISHED: APRIL 2000



CITY OF LUFKIN

ENGINEERING DEPARTMENT
P. O. DRAWER 190
300 E. SHEPHERD
LUFKIN, TEXAS 79502-0190
PHONE: (409) 633-0414

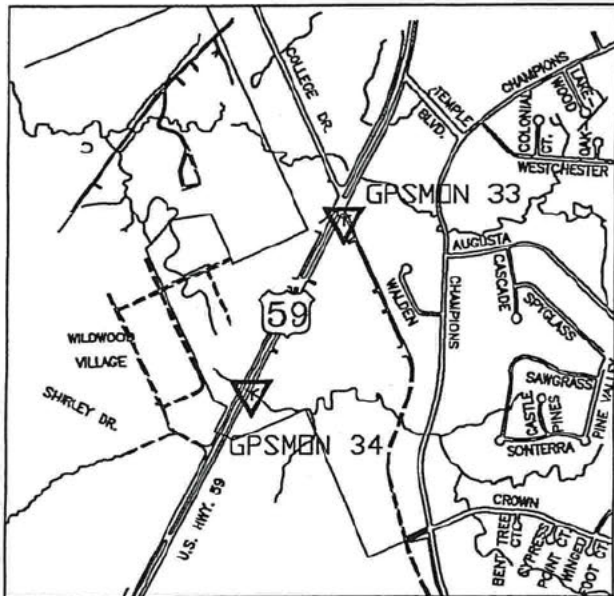
G.P.S. MONUMENTATION

BY: 

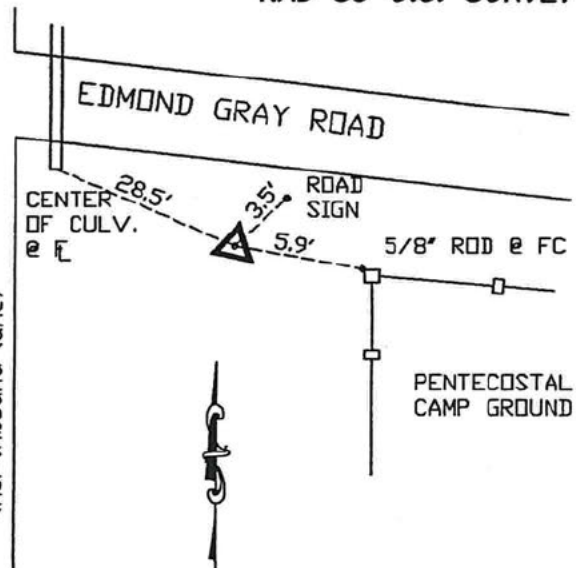
DATE: 7-13-00

GOODWIN-LASITER, INC.

NAD '83 U.S. SURVEY FEET



U.S. HIGHWAY NO. 59 (SOUTH)
(northbound lane)



MONUMENT NO.: 33

CITY MAP NO. 25
AERIAL MAP NO. 0-24
WATER/SEWER MAP NO. L-26

GEODIETIC POSITION NAD83 (1993)

LATITUDE: N31°16'53.58146"

LONGITUDE: W94°43'56.40476"

ELLIPSOID HEIGHT (APPROX.) 51.597 METERS

TEXAS STATE PLANE COORDINATES, CENTRAL ZONE (4203) NAD 83 (U.S. SURVEY FEET) GRID VALUES. TO CONVERT TO SURFACE VALUES MULTIPLY BY THE COMBINED SCALE FACTOR (C.S.F.)

N= 10473867.855 E= 4045460.465 ELEV= 259.30' (GPS) C.S.F.= 1.00010430

GENERAL LOCATION: East side of U.S. Highway No. 59 (South)
South Side of Edmond Gray Rd. (F.M. 819 extension)

MONUMENT DESCRIPTION: 4" dia. aluminum cap on a 3/4" x 36" steel rod, with a 1/2" rod for metal detection

NOTES:

HORIZONTAL POSITIONS ARE RELATIVE TO NGS MONUMENT PID BY1106 (REDFIELD 2).
GPS ORTHOMETRIC VALUES ARE BASED ON NGVD 88 AND THEY SHOULD BE CONFIRMED
DIFFERENTIAL LEVELING TO EXISTING NGS VERTICAL CONTROL

COORDINATES ESTABLISHED: APRIL 2000



CITY OF LUFKIN

ENGINEERING DEPARTMENT
P. O. DRAWER 190
300 E. SHEPHERD
LUFKIN, TEXAS 79502-0190
PHONE: (409) 633-0414

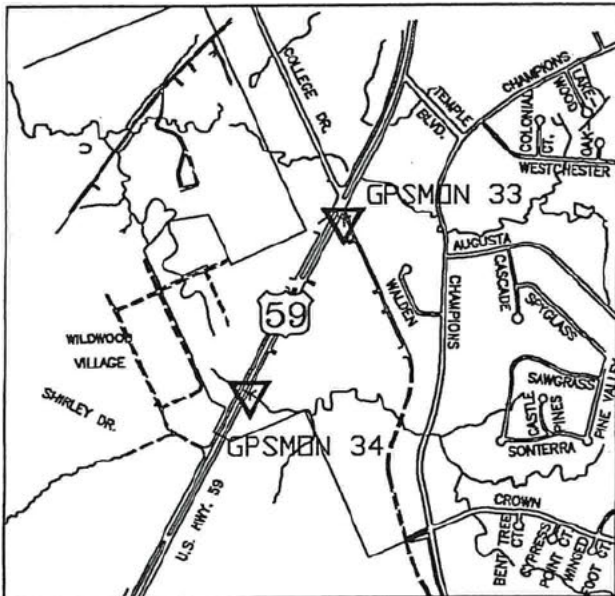
G.P.S. MONUMENTATION

BY:

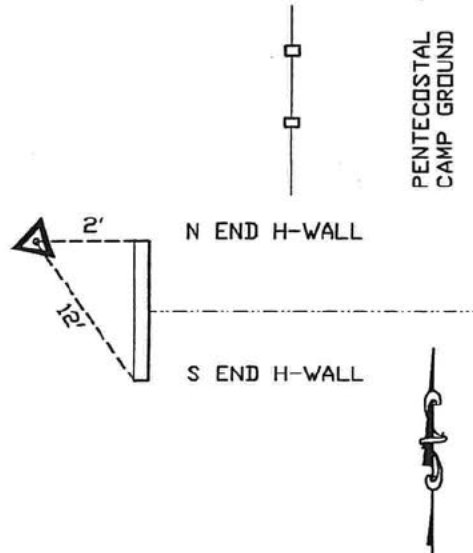
DATE: 7-31-00

GOODWIN-LASITER, INC.

NAD 83 U.S. SURVEY FEET



U.S. HIGHWAY NO. 59 (SOUTH)
(northbound lane)



MONUMENT NO.: 34

CITY MAP NO. 25
AERIAL MAP NO. 0-26
WATER/SEWER MAP NO. L-26

GEODIETIC POSITION NAD83 (1993)

LATITUDE: N31°16'39.21005"

LONGITUDE: W94°44'06.37595"

ELLIPSOID HEIGHT (APPROX.) 48.895 METERS

TEXAS STATE PLANE COORDINATES, CENTRAL ZONE (4203) NAD 83 (U.S. SURVEY FEET) GRID VALUES. TO CONVERT TO SURFACE VALUES MULTIPLY BY THE COMBINED SCALE FACTOR (C.S.F.)

N= 10472374.162 E= 4044669.390 ELEV= 250.45' (GPS) C.S.F.= 1.00010430

GENERAL LOCATION: East side of U.S. Highway No. 59 (South). Approximately 0.25 mile South of Edmond Gray Rd. (F.M. 819 extension)

MONUMENT DESCRIPTION: 4" dia. aluminum cap on a 3/4" x 36" steel rod, with a 1/2" rod for metal detection

NOTES:

HORIZONTAL POSITIONS ARE RELATIVE TO NGS MONUMENT PID BY1106 (REDFIELD 2). GPS ORTHOMETRIC VALUES ARE BASED ON NGVD 88 AND THEY SHOULD BE CONFIRMED DIFFERENTIAL LEVELING TO EXISTING NGS VERTICAL CONTROL.

COORDINATES ESTABLISHED: APRIL 2000



CITY OF LUFKIN

ENGINEERING DEPARTMENT
P. O. DRAWER 190
300 E. SHEPHERD
LUFKIN, TEXAS 79502-0190
PHONE: (409) 633-0414

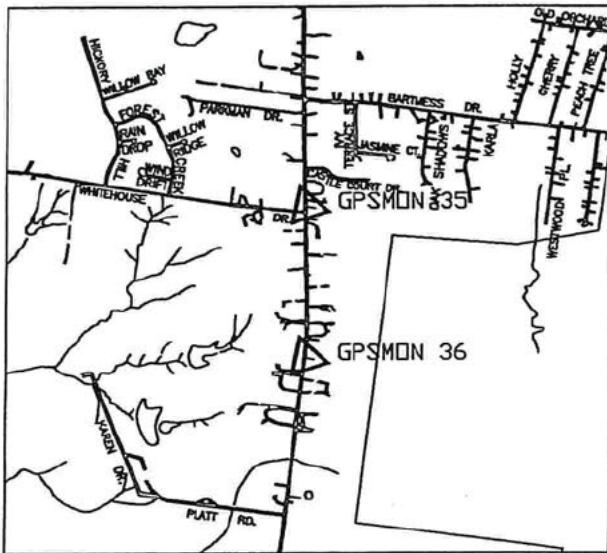
G.P.S. MONUMENTATION

BY: 

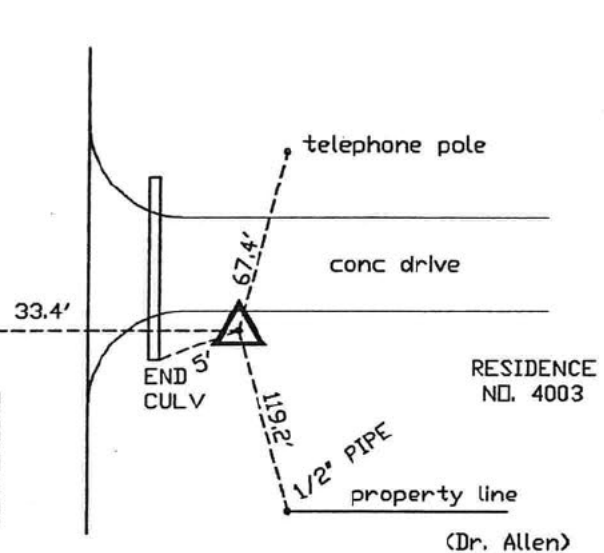
DATE: 7-31-06

GOODWIN-LASITER, INC.

NAD '83 U.S. SURVEY FEET



F.M. HIGHWAY NO. 58
(SOUTH CHESTNUT STREET)
CENTERLINE



MONUMENT NO.: 36

CITY MAP NO. 377
AERIAL MAP NO. S-25
WATER/SEWER MAP NO. O-28

GEODIETIC POSITION NAD83 (1993)

LATITUDE: N31°17'35.88216"

LONGITUDE: W94°42'25.10999"

ELLIPSOID HEIGHT (APPROX.) 71.176 METERS

TEXAS STATE PLANE COORDINATES, CENTRAL ZONE (4203) NAD 83 (U.S. SURVEY FEET) GRID VALUES. TO CONVERT TO SURFACE VALUES MULTIPLY BY THE COMBINED SCALE FACTOR (C.S.F.)

N= 10478535.790 E= 4053156.076 ELEV= 323.55' (GPS) C.S.F.= 1.00010430

GENERAL LOCATION: East side of F.M. Highway No. 58 (S. Chestnut St.)
Approximatey 0.25 miles South of Whitehouse Dr.

MONUMENT DESCRIPTION: 4" dia. aluminum cap on a 3/4" x 36" steel rod, with a 1/2" rod for metal detection

NOTES:

HORIZONTAL POSITIONS ARE RELATIVE TO NGS MONUMENT PID BY1106 (REDFIELD 2).
GPS ORTHOMETRIC VALUES ARE BASED ON NGVD 88 AND THEY SHOULD BE CONFIRMED
DIFFERENTIAL LEVELING TO EXISTING NGS VERTICAL CONTROL.

COORDINATES ESTABLISHED: APRIL 2000



CITY OF LUFKIN

ENGINEERING DEPARTMENT
P. O. DRAWER 190
300 E. SHEPHERD
LUFKIN, TEXAS 79502-0190
PHONE: (409) 633-0414

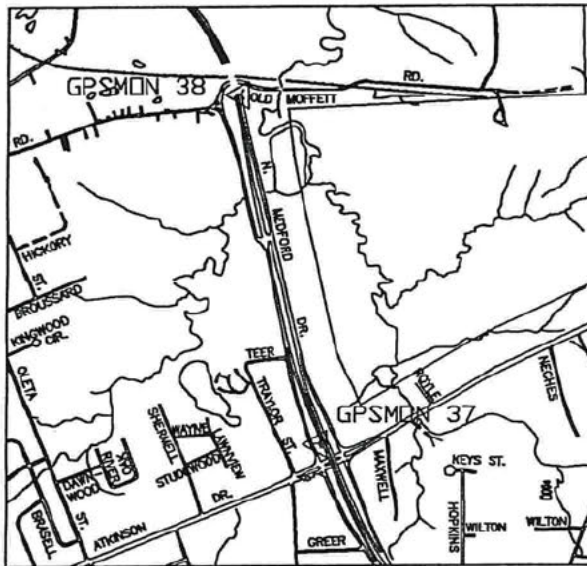
G.P.S. MONUMENTATION

BY: [REDACTED]

DATE: 7-31-00

GOODWIN-LASITER, INC.

NAD '83 U.S. SURVEY FEET



FEEDER ROAD

STATE HIGHWAY NO. 103
(ATKINSON DRIVE)



14th GUARD
RAIL POST

LOOP 287

CONC
CORNER

conc
rip-rap

END OF
OVERPASS

MONUMENT NO.: 37

CITY MAP NO. 386
AERIAL MAP NO. S-17
WATER/SEWER MAP NO. P-18

GEODIETIC POSITION NAD83 (1993)

LATITUDE: N31°21'09.35519"

LONGITUDE: W94°41'52.39936"

ELLIPSOID HEIGHT (APPROX.) 67.197 METERS

TEXAS STATE PLANE COORDINATES, CENTRAL ZONE (4203) NAD 83 (U.S. SURVEY FEET) GRID
VALUES. TO CONVERT TO SURFACE VALUES MULTIPLY BY THE COMBINED SCALE FACTOR (C.S.F.)

N= 10500219.925 E= 4054898.233 ELEV= 310.26' (GPS) C.S.F.= 1.00010430

GENERAL LOCATION: West side of State Highway Loop No. 287.
North side of State Highway No. 103.

MONUMENT DESCRIPTION: 4" dia. aluminum cap on a 3/4" x 36" steel rod, with a
1/2" rod for metal detection

NOTES:

HORIZONTAL POSITIONS ARE RELATIVE TO NGS MONUMENT PID BY1106 (REDFIELD 2).
GPS ORTHOMETRIC VALUES ARE BASED ON NGVD 88 AND THEY SHOULD BE CONFIRMED
DIFFERENTIAL LEVELING TO EXISTING NGS VERTICAL CONTROL.

COORDINATES ESTABLISHED: APRIL 2000



CITY OF LUFKIN

ENGINEERING DEPARTMENT
P. O. DRAWER 190
300 E. SHEPHERD
LUFKIN, TEXAS 79502-0190
PHONE: (409) 633-0414

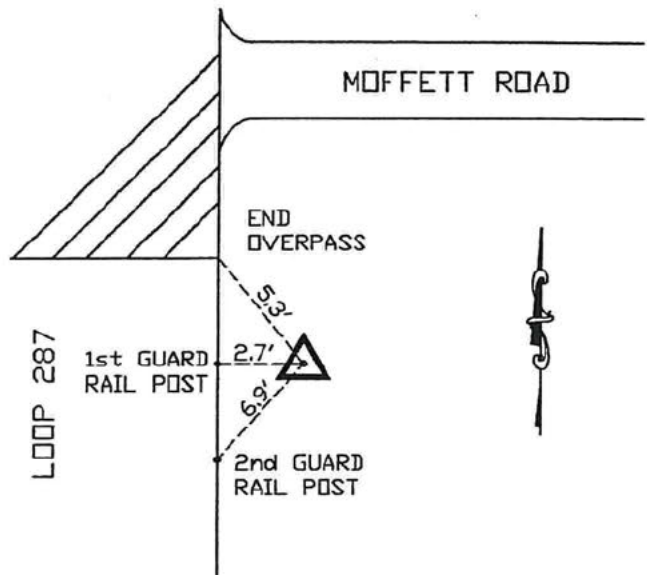
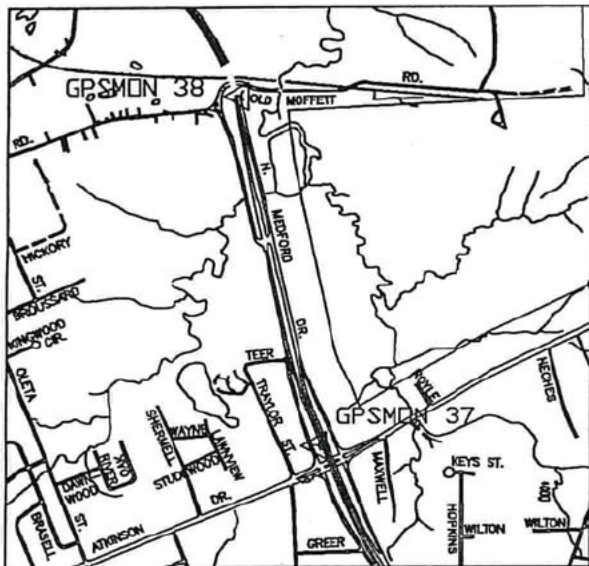
G.P.S. MONUMENTATION

BY: [REDACTED]

GOODWIN-LASITER, INC.

DATE: 7-31-00

NAD 83 U.S. SURVEY FEET



MONUMENT NO.: 38

CITY MAP NO. 386
AERIAL MAP NO. S-16
WATER/SEWER MAP NO. P-16

GEODIETIC POSITION NAD83 (1993)

LATITUDE: N31°21'43.06278"

LONGITUDE: W94°41'59.33740"

ELLIPSOID HEIGHT (APPROX.) 62.980 METERS

TEXAS STATE PLANE COORDINATES, CENTRAL ZONE (4203) NAD 83 (U.S. SURVEY FEET) GRID VALUES. TO CONVERT TO SURFACE VALUES MULTIPLY BY THE COMBINED SCALE FACTOR (C.S.F.)

N= 10503590.773 E= 4054125.027 ELEV= 296.38' (GPS) C.S.F.= 1.00010430

GENERAL LOCATION: East side of State Highway Loop No. 287.
South side of Moffett Rd.

MONUMENT DESCRIPTION: 4" dia. aluminum cap on a 3/4" x 36" steel rod, with a 1/2" rod for metal detection

NOTES:

HORIZONTAL POSITIONS ARE RELATIVE TO NGS MONUMENT PID BY1106 (REDFIELD 2).
GPS ORTHOMETRIC VALUES ARE BASED ON NGVD 88 AND THEY SHOULD BE CONFIRMED
DIFFERENTIAL LEVELING TO EXISTING NGS VERTICAL CONTROL.

COORDINATES ESTABLISHED: APRIL 2000



CITY OF LUFKIN

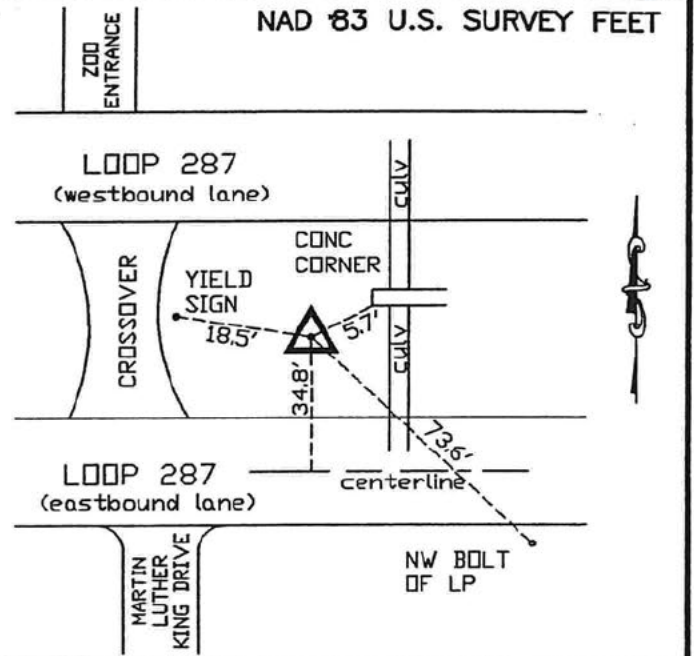
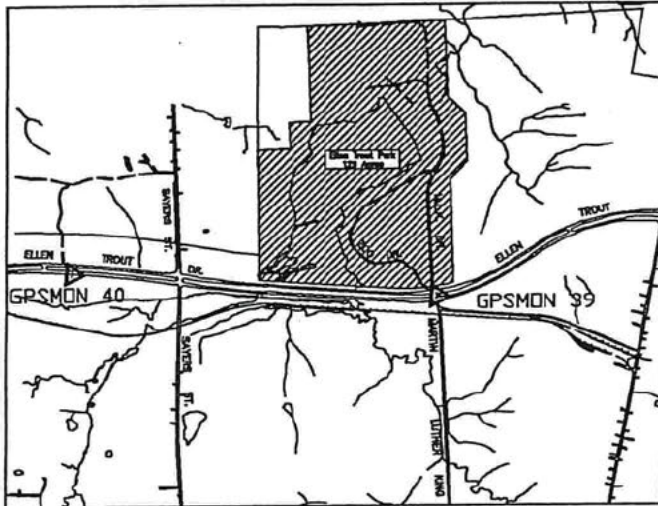
ENGINEERING DEPARTMENT
P. O. DRAWER 190
300 E. SHEPHERD
LUFKIN, TEXAS 79502-0190
PHONE: (409) 633-0414

G.P.S. MONUMENTATION

BY: 

DATE: 7-31-00

GOODWIN-LASITER, INC.



MONUMENT NO.: 39

CITY MAP NO. 380
AERIAL MAP NO. Q-15
WATER/SEWER MAP NO. M-15

GEODIETIC POSITION NAD83 (1993)

LATITUDE: N31°22'14.55121"

LONGITUDE: W94°43'27.70350"

ELLIPSOID HEIGHT (APPROX.) 62.289 METERS

TEXAS STATE PLANE COORDINATES, CENTRAL ZONE (4203) NAD 83 (U.S. SURVEY FEET) GRID VALUES. TO CONVERT TO SURFACE VALUES MULTIPLY BY THE COMBINED SCALE FACTOR (C.S.F.)

N= 10506381.226 E= 4045313.262 ELEV= 294.02' (GPS) C.S.F.= 1.00010430

GENERAL LOCATION: In the median of State Highway Loop No. 287.
East side of Martin Luther King Dr.

MONUMENT DESCRIPTION: 4" dia. aluminum cap on a 3/4" x 36" steel rod, with a 1/2" rod for metal detection

NOTES:

HORIZONTAL POSITIONS ARE RELATIVE TO NGS MONUMENT PID BY1106 (REDFIELD 2).
GPS ORTHOMETRIC VALUES ARE BASED ON NGVD 88 AND THEY SHOULD BE CONFIRMED
DIFFERENTIAL LEVELING TO EXISTING NGS VERTICAL CONTROL.

COORDINATES ESTABLISHED: APRIL 2000



CITY OF LUFKIN

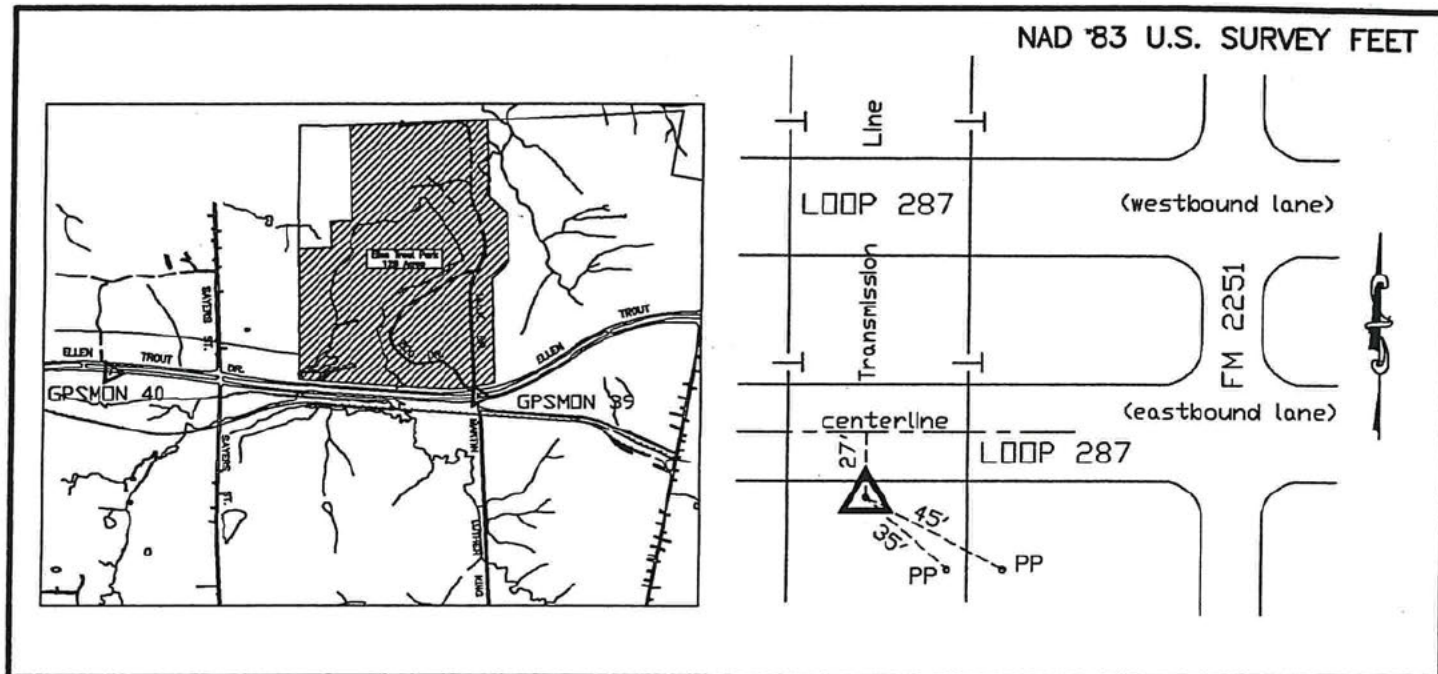
ENGINEERING DEPARTMENT
P. O. DRAWER 190
300 E. SHEPHERD
LUFKIN, TEXAS 79502-0190
PHONE: (409) 633-0414

G.P.S. MONUMENTATION

BY: 

DATE: 7-31-08

GOODWIN-LASITER, INC.



MONUMENT NO.: 40

CITY MAP NO. 381
 AERIAL MAP NO. P-15
 WATER/SEWER MAP NO. L-14

GEODIETIC POSITION NAD83 (1993)

LATITUDE: N31°22'19.29659"

LONGITUDE: W94°44'15.76181"

ELLIPSOID HEIGHT (APPROX.) 64.109 METERS

TEXAS STATE PLANE COORDINATES, CENTRAL ZONE (4203) NAD 83 (U.S. SURVEY FEET) GRID VALUES. TO CONVERT TO SURFACE VALUES MULTIPLY BY THE COMBINED SCALE FACTOR (C.S.F.)

N= 10506650.348

E= 4042128.243

ELEV= 299.95' (GPS)

C.S.F.= 1.00010430

GENERAL LOCATION: South side of State Highway Loop No. 287.
 West side of F.M. Highway No. 2251

MONUMENT DESCRIPTION: 4" dia. aluminum cap on a 3/4" x 36" steel rod, with a 1/2" rod for metal detection

NOTES:

HORIZONTAL POSITIONS ARE RELATIVE TO NGS MONUMENT PID BY1106 (REDFIELD 2).
 GPS ORTHOMETRIC VALUES ARE BASED ON NGVD 88 AND THEY SHOULD BE CONFIRMED
 DIFFERENTIAL LEVELING TO EXISTING NGS VERTICAL CONTROL.

COORDINATES ESTABLISHED: APRIL 2000



CITY OF LUFKIN

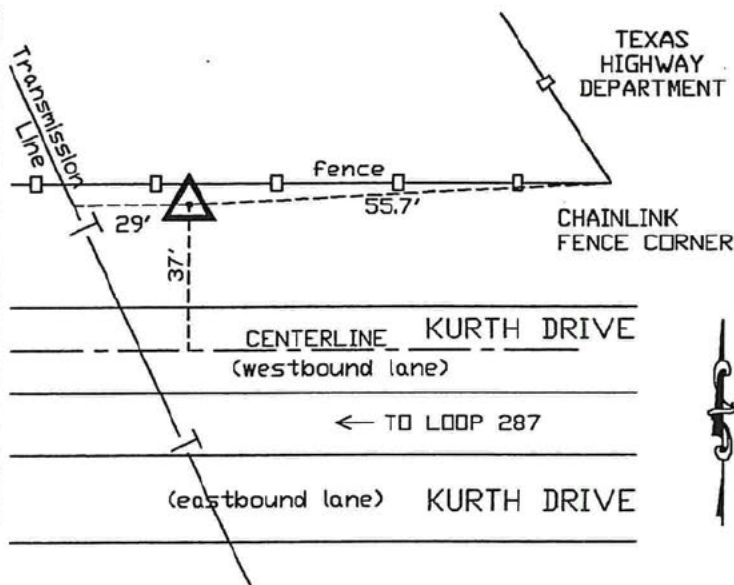
ENGINEERING DEPARTMENT
 P. O. DRAWER 190
 300 E. SHEPHERD
 LUFKIN, TEXAS 79502-0190
 PHONE: (409) 633-0414

G.P.S. MONUMENTATION

BY:

DATE: 7-31-00

GOODWIN-LASITER, INC.



CITY MAP NO. _____ 383
AERIAL MAP NO. _____ 0-16
WATER/SEWER MAP NO. _____ K-16

LATITUDE: N31°21'40.63699"

LONGITUDE: W94°44'15.96987"

TEXAS STATE PLANE COORDINATES, CENTRAL ZONE (4203) NAD 83 (U.S. SURVEY FEET) GRID
VALUES. TO CONVERT TO SURFACE VALUES MULTIPLY BY THE COMBINED SCALE FACTOR (C.S.F.)

N= 10502748.370

E= 4042306.629

ELEV= 320.83' (GPS)

C.S.F.= 1.00010430

GENERAL LOCATION: North side of Kurth Dr.
Approximately 0.30 miles East of McMullen St.

MONUMENT DESCRIPTION: 4" dia. aluminum cap on a 3/4" x 36" steel rod, with a 1/2" rod for metal detection

NOTES:

HORIZONTAL POSITIONS ARE RELATIVE TO NGS MONUMENT PID BY1106 (REDFIELD 2).
GPS ORTHOMETRIC VALUES ARE BASED ON NGVD 88 AND THEY SHOULD BE CONFIRMED
DIFFERENTIAL LEVELING TO EXISTING NGS VERTICAL CONTROL.

COORDINATES ESTABLISHED: APRIL 2000



CITY OF LUFKIN

ENGINEERING DEPARTMENT
P. O. DRAWER 190
300 E. SHEPHERD
LUFKIN, TEXAS 79502-0190
PHONE: (409) 633-0414

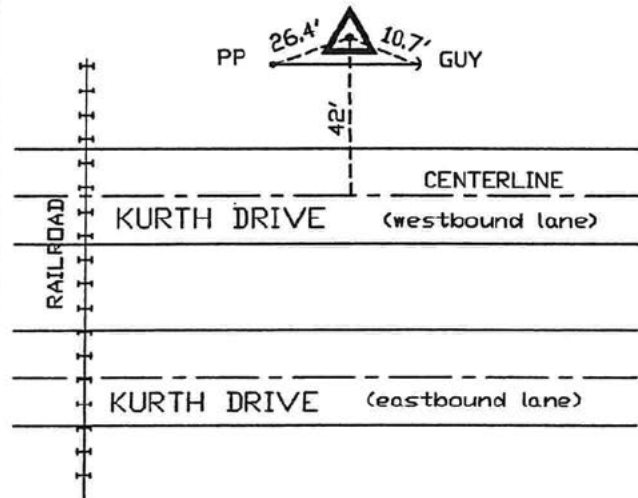
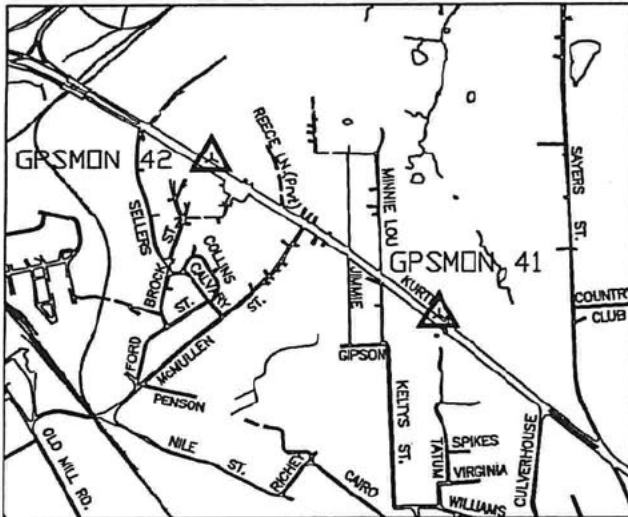
G.P.S. MONUMENTATION

BY:

GOODWIN-LASITER, INC.

DATE: 7-31-00

NAD 83 U.S. SURVEY FEET



MONUMENT NO.: 42

CITY MAP NO. 383
AERIAL MAP NO. 0-16
WATER/SEWER MAP NO. K-16

GEODIETIC POSITION NAD83 (1993)

LATITUDE: N31°21'54.73899"

LONGITUDE: W94°44'37.49874"

ELLIPSOID HEIGHT (APPROX.) 79.238 METERS

TEXAS STATE PLANE COORDINATES, CENTRAL ZONE (4203) NAD 83 (U.S. SURVEY FEET) GRID VALUES. TO CONVERT TO SURFACE VALUES MULTIPLY BY THE COMBINED SCALE FACTOR (C.S.F.)

N= 10504077.582 E= 4040370.893 ELEV= 349.61' (GPS) C.S.F.= 1.00010430

GENERAL LOCATION: North side of Kurth Dr.
Approximately 0.20 miles West of McMullen St.

MONUMENT DESCRIPTION: 4" dia. aluminum cap on a 3/4" x 36" steel rod, with a 1/2" rod for metal detection

NOTES:

HORIZONTAL POSITIONS ARE RELATIVE TO NGS MONUMENT PID BY1106 (REDFIELD 2).
GPS ORTHOMETRIC VALUES ARE BASED ON NGVD 88 AND THEY SHOULD BE CONFIRMED
DIFFERENTIAL LEVELING TO EXISTING NGS VERTICAL CONTROL.

COORDINATES ESTABLISHED: APRIL 2000



CITY OF LUFKIN
ENGINEERING DEPARTMENT
P. O. DRAWER 190
300 E. SHEPHERD
LUFKIN, TEXAS 79502-0190
PHONE: (409) 633-0414

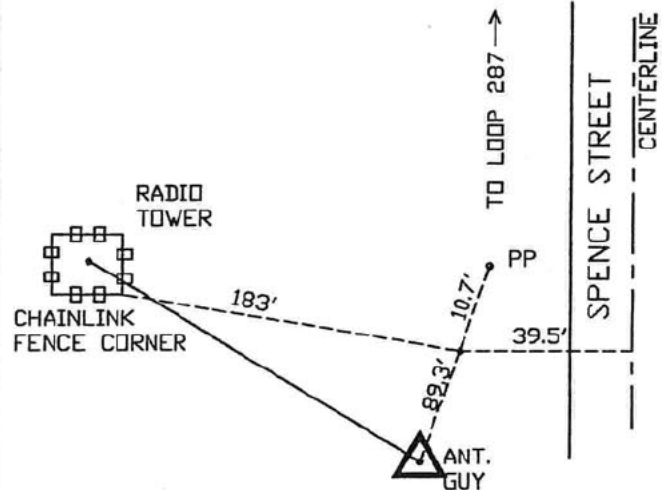
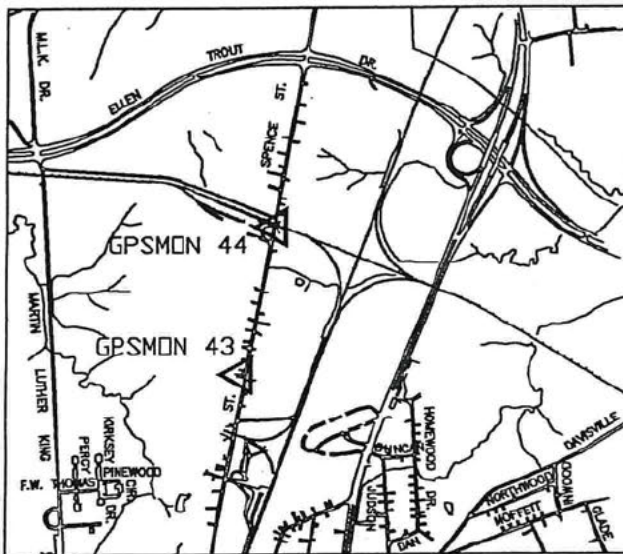
G.P.S. MONUMENTATION

BY: 

DATE: 7-13-00

GOODWIN-LASITER, INC.

NAD 83 U.S. SURVEY FEET



MONUMENT NO.: 43

CITY MAP NO. 380
AERIAL MAP NO. Q-15
WATER/SEWER MAP NO. N-15

GEODIETIC POSITION NAD83 (1993)

LATITUDE: N31°21'52.34360"

LONGITUDE: W94°43'06.47261"

ELLIPSOID HEIGHT (APPROX.) 68.216 METERS

TEXAS STATE PLANE COORDINATES, CENTRAL ZONE (4203) NAD 83 (U.S. SURVEY FEET) GRID VALUES. TO CONVERT TO SURFACE VALUES MULTIPLY BY THE COMBINED SCALE FACTOR (C.S.F.)

N= 10504233.125

E= 4048264.643

ELEV= 313.51' (GPS) C.S.F.= 1.00010430

GENERAL LOCATION: West side of Spence St.
Approximately 0.60 miles South of State Highway Loop No. 287

MONUMENT DESCRIPTION: 4" dia. aluminum cap on a 3/4" x 36" steel rod, with a 1/2" rod for metal detection

NOTES:

HORIZONTAL POSITIONS ARE RELATIVE TO NGS MONUMENT PID BY1106 (REDFIELD 2).
GPS ORTHOMETRIC VALUES ARE BASED ON NGVD 88 AND THEY SHOULD BE CONFIRMED
DIFFERENTIAL LEVELING TO EXISTING NGS VERTICAL CONTROL

COORDINATES ESTABLISHED: APRIL 2000



CITY OF LUFKIN

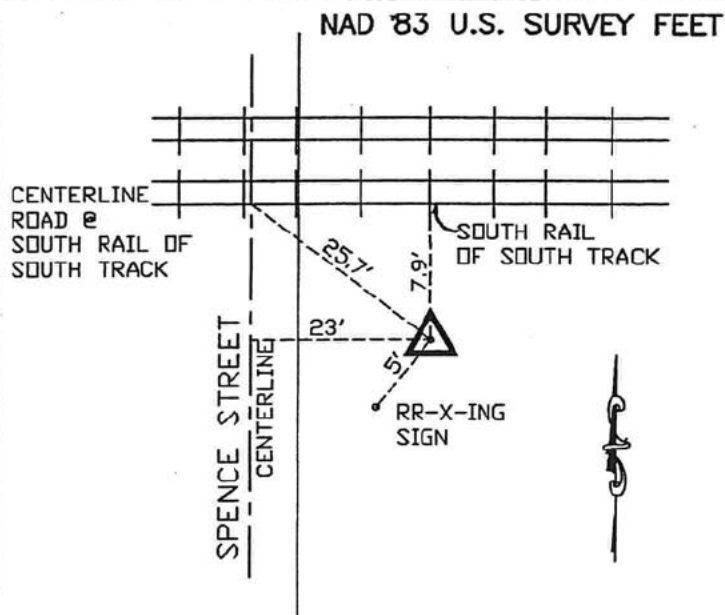
ENGINEERING DEPARTMENT
P. O. DRAWER 190
300 E. SHEPHERD
LUFKIN, TEXAS 79502-0190
PHONE: (409) 633-0414

G.P.S. MONUMENTATION

BY: 

DATE: 7-31-00

GOODWIN-LASITER, INC.



MONUMENT NO.: 44

CITY MAP NO. 380
AERIAL MAP NO. Q-15
WATER/SEWER MAP NO. N-15

GEODIETIC POSITION NAD83 (1993)

LATITUDE: N31°22'06.24888"

LONGITUDE: W94°43'01.81099"

ELLIPSOID HEIGHT (APPROX.) 66.841 METERS

TEXAS STATE PLANE COORDINATES, CENTRAL ZONE (4203) NAD 83 (U.S. SURVEY FEET) GRID VALUES. TO CONVERT TO SURFACE VALUES MULTIPLY BY THE COMBINED SCALE FACTOR (C.S.F.)

N= 10505656.662 E= 4048597.370 ELEV= 308.98' (GPS) C.S.F.= 1.00010430

GENERAL LOCATION: East side of Spence St.
Approximately 0.30 miles South of State Highway Loop No. 287

MONUMENT DESCRIPTION: 4" dia. aluminum cap on a 3/4" x 36" steel rod, with a 1/2" rod for metal detection

NOTES:

HORIZONTAL POSITIONS ARE RELATIVE TO NGS MONUMENT PID BY1106 (REDFIELD 2).
GPS ORTHOMETRIC VALUES ARE BASED ON NGVD 88 AND THEY SHOULD BE CONFIRMED
DIFFERENTIAL LEVELING TO EXISTING NGS VERTICAL CONTROL.

COORDINATES ESTABLISHED: APRIL 2000



CITY OF LUFKIN

ENGINEERING DEPARTMENT
P. O. DRAWER 190
300 E. SHEPHERD
LUFKIN, TEXAS 79502-0190
PHONE: (409) 633-0414

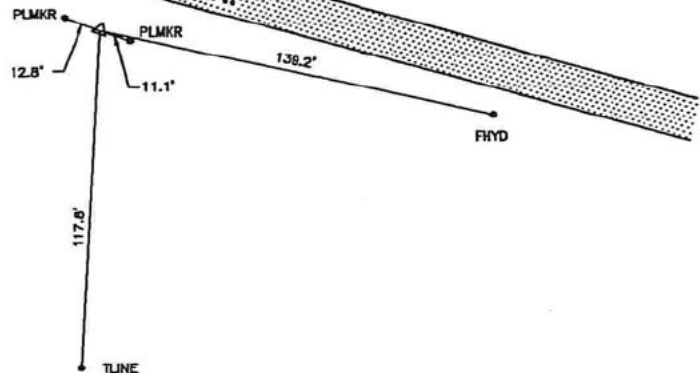
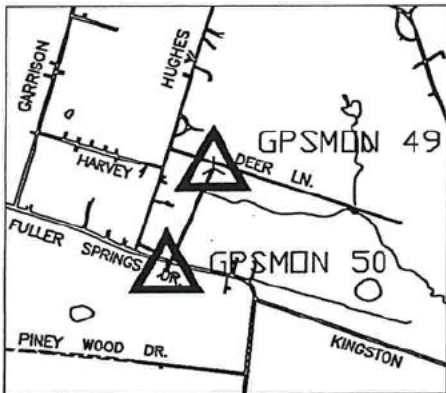
G.P.S. MONUMENTATION

BY: _____

DATE: 7-31-00

GOODWIN-LASITER, INC.

NAD 83 U.S. SURVEY FEET



MONUMENT NO.: 49

GEODIETIC POSITION NAD83 (1993)

LATITUDE: N31°17'50.45274"

LONGITUDE: W94°41'03.16434"

ELLIPSOID HEIGHT (APPROX.) 68.668 METERS

TEXAS STATE PLANE COORDINATES, CENTRAL ZONE (4203) NAD 83 (U.S. SURVEY FEET) GRID VALUES. TO CONVERT TO SURFACE VALUES MULTIPLY BY THE COMBINED SCALE FACTOR (C.S.F.)

N= 10480366.183

E= 4060181.880

ELEV= 315.35' (GPS) C.S.F.= 1.00010430

GENERAL LOCATION: South side of Deer Ln. between pipeline markers for Pipe Line of America. Approximately 300 ft. from intersection of Deer Ln. and Hughes Rd.

MONUMENT DESCRIPTION: 3 1/2" Bronze cap set in 3' concrete monument and reinforced with 1/2" rebar

NOTES:

HORIZONTAL POSITIONS ARE RELATIVE TO NGS MONUMENT PID BY1106 (REDFIELD 2). GPS ORTHOMETRIC VALUES ARE BASED ON NGVD 88 AND THEY SHOULD BE CONFIRMED DIFFERENTIAL LEVELING TO EXISTING NGS VERTICAL CONTROL.

COORDINATES ESTABLISHED: APRIL 2000



CITY OF LUFKIN

ENGINEERING DEPARTMENT
P. O. DRAWER 190
300 E. SHEPHERD
LUFKIN, TEXAS 79502-0190
PHONE: (409) 633-0414

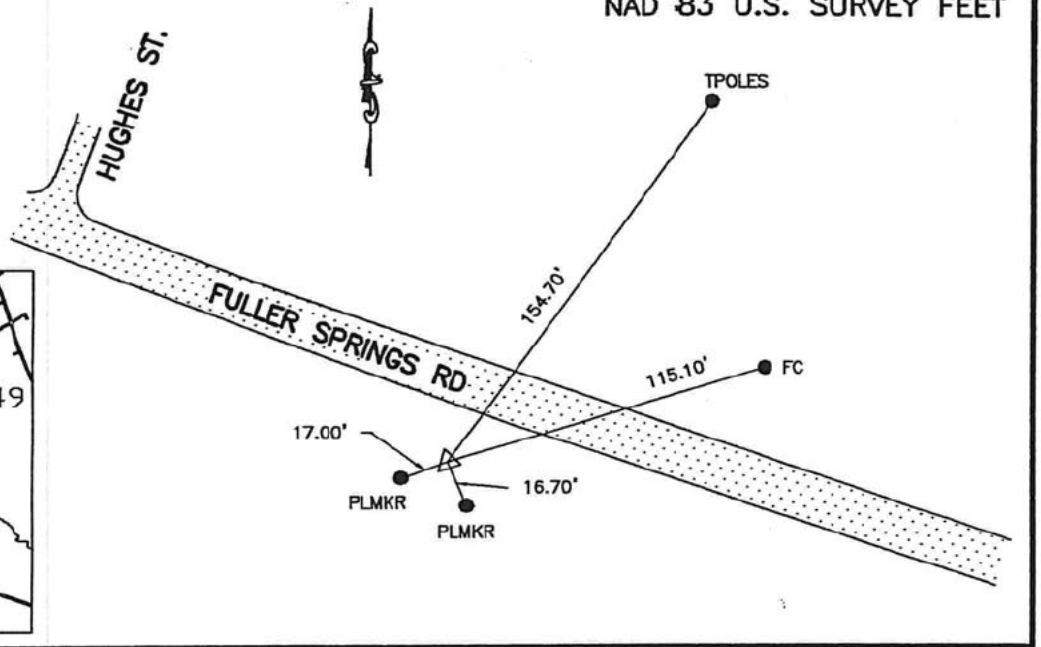
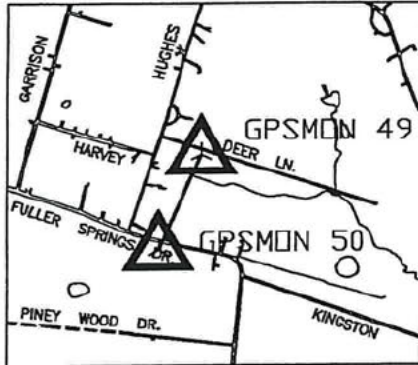
G.P.S. MONUMENTATION

BY: 

DATE: 7-31-00

GOODWIN-LASITER, INC.

NAD 83 U.S. SURVEY FEET



MONUMENT NO.: 50

GEODIETIC POSITION NAD83 (1993)

LATITUDE: N31°17'42.13093"

LONGITUDE: W94°41'07.05470"

ELLIPSOID HEIGHT (APPROX.) 71.978 METERS

LOCATION MAP NO. _____
CITY MAP NO. _____
AERIAL MAP NO. _____
WATER/SEWER MAP NO. R-28

TEXAS STATE PLANE COORDINATES, CENTRAL ZONE (4203) NAD 83 (U.S. SURVEY FEET) GRID VALUES. TO CONVERT TO SURFACE VALUES MULTIPLY BY THE COMBINED SCALE FACTOR (C.S.F.)

N= 10479509.347 E= 4059887.471 ELEV= 326.22' (GPS) C.S.F.= 1.00010430

GENERAL LOCATION: Southeast from intersection of Hughes Rd and Fuller Springs Rd on south side of Fuller Springs Rd between pipeline markers for Pipeline of America.

MONUMENT DESCRIPTION: 3 1/2" Bronze cap set in 3' concrete monument and reinforced with 1/2" rebar

NOTES:

HORIZONTAL POSITIONS ARE RELATIVE TO NGS MONUMENT PID BY1106 (REDFIELD 2). GPS ORTHOMETRIC VALUES ARE BASED ON NGVD 88 AND THEY SHOULD BE CONFIRMED DIFFERENTIAL LEVELING TO EXISTING NGS VERTICAL CONTROL.

COORDINATES ESTABLISHED: APRIL 2000



CITY OF LUFKIN

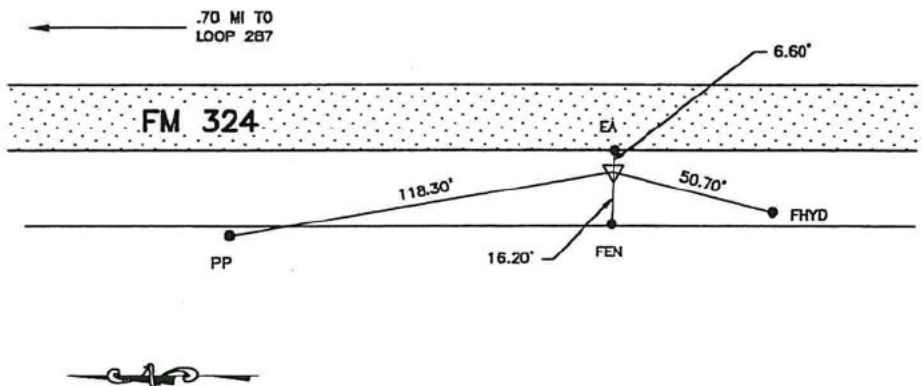
ENGINEERING DEPARTMENT
P. O. DRAWER 190
300 E. SHEPHERD
LUFKIN, TEXAS 79502-0190
PHONE: (409) 633-0414

G.P.S. MONUMENTATION

BY: _____ DATE: 7-31-00

GOODWIN-LASITER, INC.

NAD '83 U.S. SURVEY FEET



MONUMENT NO.: 51

CITY MAP NO. 25
AERIAL MAP NO. 0-25
WATER/SEWER MAP NO. K-27

GEODIETIC POSITION NAD83 (1993)

LATITUDE: N31°17'57.21588"

LONGITUDE: W94°44'44.13591"

ELLIPSOID HEIGHT (APPROX.) 50.506 METERS

TEXAS STATE PLANE COORDINATES, CENTRAL ZONE (4203) NAD 83 (U.S. SURVEY FEET) GRID VALUES. TO CONVERT TO SURFACE VALUES MULTIPLY BY THE COMBINED SCALE FACTOR (C.S.F.)

N= 10480080.788 E= 4041001.184 ELEV= 255.63' (GPS) C.S.F.= 1.00010430

GENERAL LOCATION: North side of F.M. Highway No. 324 approximately 0.75 miles South of the intersection of F.M. Highway No. 1336 and F.M. Highway No. 324.

MONUMENT DESCRIPTION: 3 1/2" Bronze cap set in 3' concrete monument and reinforced with 1/2" rebar

NOTES:

HORIZONTAL POSITIONS ARE RELATIVE TO NGS MONUMENT PID BY1106 (REDFIELD 2). GPS ORTHOMETRIC VALUES ARE BASED ON NGVD 88 AND THEY SHOULD BE CONFIRMED DIFFERENTIAL LEVELING TO EXISTING NGS VERTICAL CONTROL.

COORDINATES ESTABLISHED: APRIL 2000



CITY OF LUFKIN

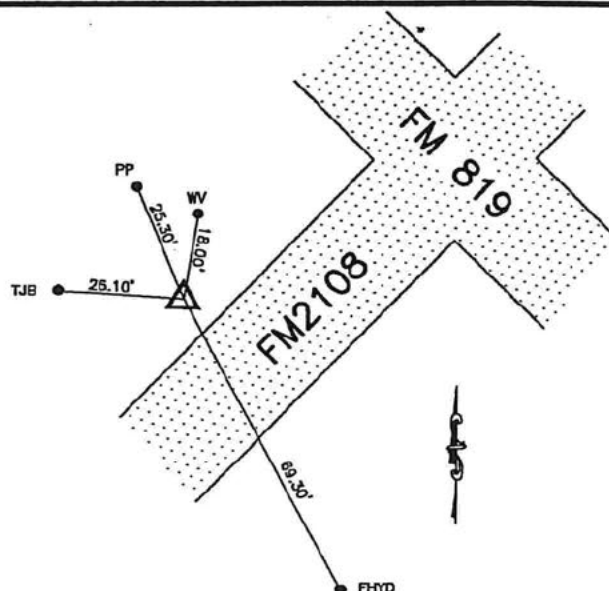
ENGINEERING DEPARTMENT
P. O. DRAWER 190
300 E. SHEPHERD
LUFKIN, TEXAS 79502-0190
PHONE: (409) 633-0414

G.P.S. MONUMENTATION

BY:

DATE: 7-31-00

GOODWIN-LASITER, INC.



NAD 83 U.S. SURVEY FEET

MONUMENT NO.: 52

GEODIETIC POSITION NAD83 (1993)

LATITUDE: N31°15'15.07061"

LONGITUDE: W94°43'18.89829"

ELLIPSOID HEIGHT (APPROX.) 64.571 METERS

LOCATION MAP NO. _____
CITY MAP NO. _____
AERIAL MAP NO. _____
WATER/SEWER MAP NO. _____

TEXAS STATE PLANE COORDINATES, CENTRAL ZONE (4203) NAD 83 (U.S. SURVEY FEET) GRID VALUES. TO CONVERT TO SURFACE VALUES MULTIPLY BY THE COMBINED SCALE FACTOR (C.S.F.)

N= 10464091.568

E= 4049212.683

ELEV= 301.99' (GPS)

C.S.F.= 1.00010430

GENERAL LOCATION: Southwest about 50' from intersection of FM 819 and FM 2108 on north side of FM 2108.

MONUMENT DESCRIPTION: 3 1/2" Bronze cap set in 3' concrete monument and reinforced with 1/2" rebar

NOTES:

HORIZONTAL POSITIONS ARE RELATIVE TO NGS MONUMENT PID BY1106 (REDFIELD 2). GPS ORTHOMETRIC VALUES ARE BASED ON NGVD 88 AND THEY SHOULD BE CONFIRMED DIFFERENTIAL LEVELING TO EXISTING NGS VERTICAL CONTROL.

COORDINATES ESTABLISHED: APRIL 2000



CITY OF LUFKIN

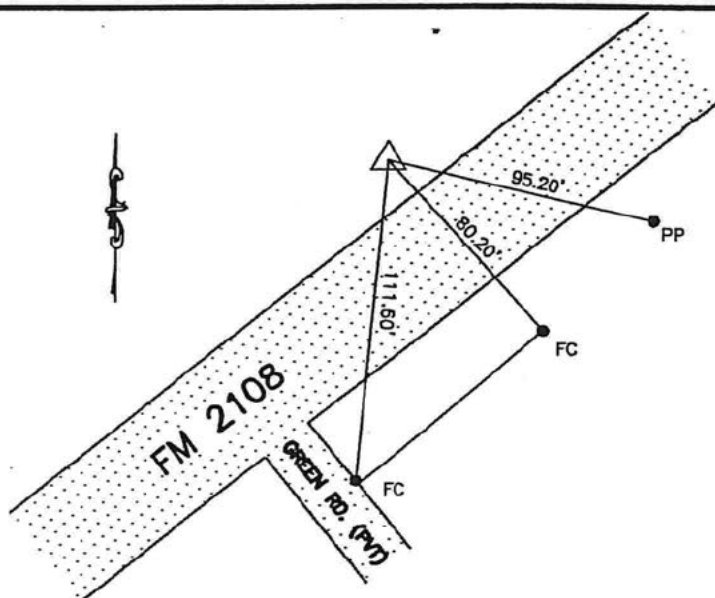
ENGINEERING DEPARTMENT
P. O. DRAWER 190
300 E. SHEPHERD
LUFKIN, TEXAS 79502-0190
PHONE: (409) 633-0414

G.P.S. MONUMENTATION

BY: _____

DATE: 7-31-00

GOODWIN-LASITER, INC.



NAD 83 U.S. SURVEY FEET

MONUMENT NO.: 53

GEODIETIC POSITION NAD83 (1993)

LATITUDE: N31°15'22.71035"

LONGITUDE: W94°43'08.29144"

ELLIPSOID HEIGHT (APPROX.) 62.863 METERS

TEXAS STATE PLANE COORDINATES, CENTRAL ZONE (4203) NAD 83 (U.S. SURVEY FEET) GRID VALUES. TO CONVERT TO SURFACE VALUES MULTIPLY BY THE COMBINED SCALE FACTOR (C.S.F.)

N= 10464908.886

E= 4050093.204

ELEV= 296.39' (GPS) C.S.F.= 1.00010430

GENERAL LOCATION: Northeast from intersection of Green Rd. and FM 2108 on north side of FM 2108.

MONUMENT DESCRIPTION: 3 1/2" Bronze cap set in 3' concrete monument and reinforced with 1/2" rebar

NOTES:

HORIZONTAL POSITIONS ARE RELATIVE TO NGS MONUMENT PID BY1106 (REDFIELD 2). GPS ORTHOMETRIC VALUES ARE BASED ON NGVD 88 AND THEY SHOULD BE CONFIRMED DIFFERENTIAL LEVELING TO EXISTING NGS VERTICAL CONTROL

COORDINATES ESTABLISHED: APRIL 2000



CITY OF LUFKIN

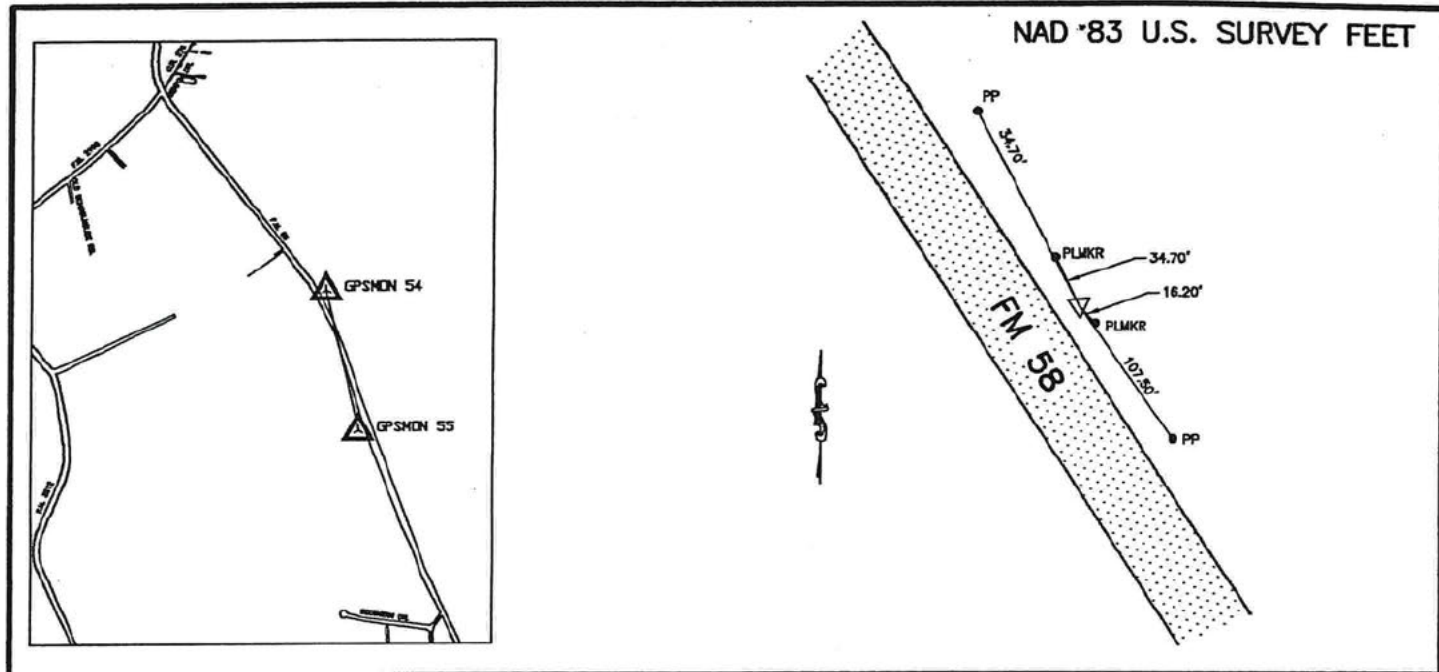
ENGINEERING DEPARTMENT
P. O. DRAWER 190
300 E. SHEPHERD
LUFKIN, TEXAS 79502-0190
PHONE: (409) 633-0414

G.P.S. MONUMENTATION

BY: 

DATE: 7-31-00

GOODWIN-LASITER, INC.



MONUMENT NO.: 54

GEODIETIC POSITION NAD83 (1993)

LATITUDE: N31°14'52.74945"

LONGITUDE: W94°42'01.45886"

ELLIPSOID HEIGHT (APPROX.) 67.383 METERS

TEXAS STATE PLANE COORDINATES, CENTRAL ZONE (4203) NAD 83 (U.S. SURVEY FEET) GRID VALUES. TO CONVERT TO SURFACE VALUES MULTIPLY BY THE COMBINED SCALE FACTOR (C.S.F.)

N= 10462178.843

E= 4056039.700

ELEV= 311.30' (GPS) C.S.F.= 1.00010430

GENERAL LOCATION: Northeast side of FM 58 at pipeline crossing about 500' north of County Land Fill road.

MONUMENT DESCRIPTION: 3 1/2" Bronze cap set in 3' concrete monument and reinforced with 1/2" rebar

NOTES:

HORIZONTAL POSITIONS ARE RELATIVE TO NGS MONUMENT PID BY1106 (REDFIELD 2). GPS ORTHOMETRIC VALUES ARE BASED ON NGVD 88 AND THEY SHOULD BE CONFIRMED DIFFERENTIAL LEVELING TO EXISTING NGS VERTICAL CONTROL.

COORDINATES ESTABLISHED: APRIL 2000



CITY OF LUFKIN

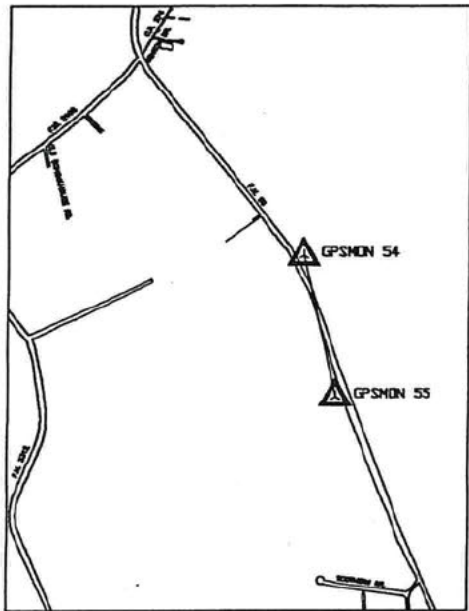
ENGINEERING DEPARTMENT
P. O. DRAWER 190
300 E. SHEPHERD
LUFKIN, TEXAS 79502-0190
PHONE: (409) 633-0414

G.P.S. MONUMENTATION

BY: [REDACTED]

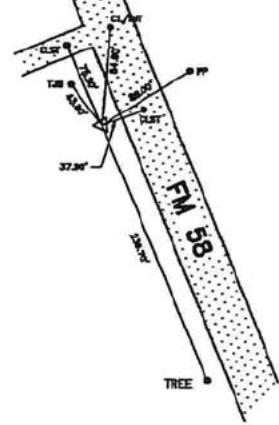
DATE: 7-31-00

GOODWIN-LASITER, INC.



NAD 83 U.S. SURVEY FEET

ENTRANCE TO COMPRESSOR
STATION, NATURAL GAS P/L
OF AMERICA



MONUMENT NO.: 55

GEODIETIC POSITION NAD83 (1993)

LATITUDE: N31°14'30.82884"

LONGITUDE: W94°41'54.87805"

ELLIPSOID HEIGHT (APPROX.) 61.545 METERS

LOCATION MAP NO. _____
CITY MAP NO. _____
AERIAL MAP NO. _____
WATER/SEWER MAP NO. _____

TEXAS STATE PLANE COORDINATES, CENTRAL ZONE (4203) NAD 83 (U.S. SURVEY FEET) GRID
VALUES. TO CONVERT TO SURFACE VALUES MULTIPLY BY THE COMBINED SCALE FACTOR (C.S.F.)

N= 10459995.897 E= 4056722.331 ELEV= 292.17' (GPS) C.S.F.= 1.00010430

GENERAL LOCATION: Southwest side of FM 58 about 75' south of natural gas
compressor station entrance and about 1800' south of County
Land Fill entrance.

MONUMENT DESCRIPTION: 3 1/2" Bronze cap set in 3' concrete monument and
reinforced with 1/2" rebar

NOTES:

HORIZONTAL POSITIONS ARE RELATIVE TO NGS MONUMENT PID BY1106 (REDFIELD 2).
GPS ORTHOMETRIC VALUES ARE BASED ON NGVD 88 AND THEY SHOULD BE CONFIRMED
DIFFERENTIAL LEVELING TO EXISTING NGS VERTICAL CONTROL.

COORDINATES ESTABLISHED: APRIL 2000

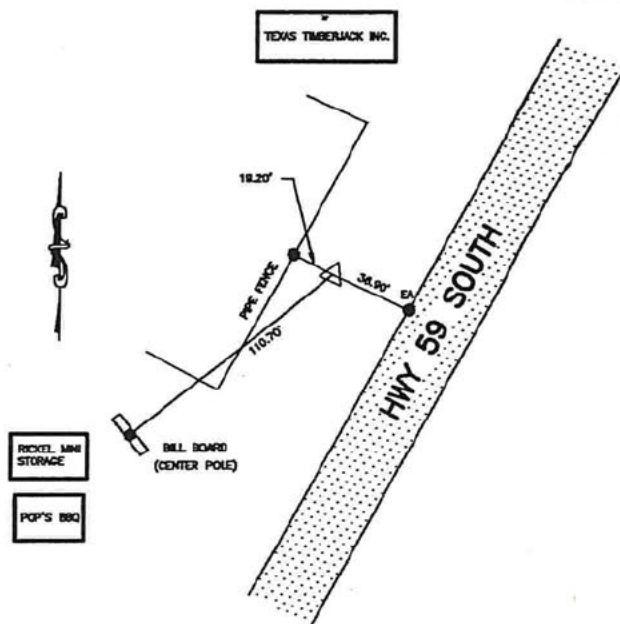
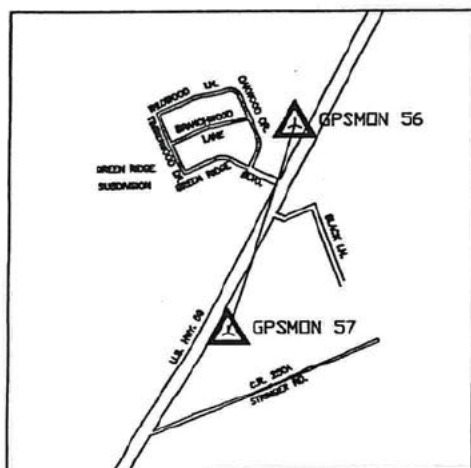


CITY OF LUFKIN

ENGINEERING DEPARTMENT
P. O. DRAWER 190
300 E. SHEPHERD
LUFKIN, TEXAS 79502-0190
PHONE: (409) 633-0414

G.P.S. MONUMENTATION

BY:  DATE: 7-31-00
GOODWIN-LASITER, INC.



NAD 83 U.S. SURVEY FEET

MONUMENT NO.: 56

GEODIETIC POSITION NAD83 (1993)

LATITUDE: N31°15'07.45691"

LONGITUDE: W94°45'08.27954"

ELLIPSOID HEIGHT (APPROX.) 58.349 METERS

TEXAS STATE PLANE COORDINATES, CENTRAL ZONE (4203) NAD 83 (U.S. SURVEY FEET) GRID VALUES. TO CONVERT TO SURFACE VALUES MULTIPLY BY THE COMBINED SCALE FACTOR (C.S.F.)

N= 10462845.893

E= 4039769.396

ELEV= 281.51' (GPS)

C.S.F.= 1.00010430

GENERAL LOCATION: Located on north side of HWY 59 South just past entrance to Texas Timberjack Inc. next to fence.

MONUMENT DESCRIPTION: 3 1/2" Bronze cap set in 3' concrete monument and reinforced with 1/2" rebar

NOTES:

HORIZONTAL POSITIONS ARE RELATIVE TO NGS MONUMENT PID BY1106 (REDFIELD 2). GPS ORTHOMETRIC VALUES ARE BASED ON NGVD 88 AND THEY SHOULD BE CONFIRMED DIFFERENTIAL LEVELING TO EXISTING NGS VERTICAL CONTROL

COORDINATES ESTABLISHED: APRIL 2000



CITY OF LUFKIN

ENGINEERING DEPARTMENT
P. O. DRAWER 190
300 E. SHEPHERD
LUFKIN, TEXAS 79502-0190
PHONE: (409) 633-0414

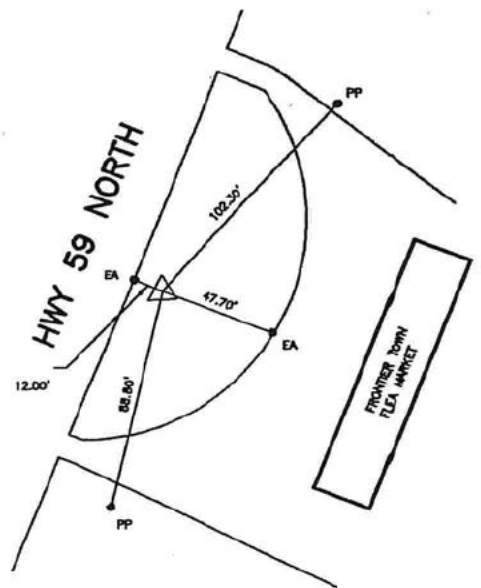
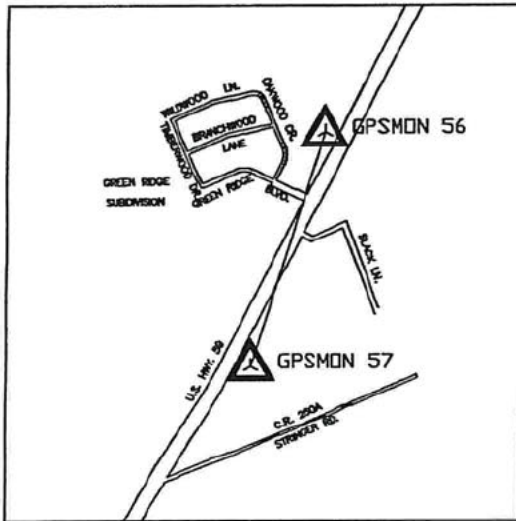
G.P.S. MONUMENTATION

BY: _____

DATE: 7-31-00

GOODWIN-LASITER, INC.

NAD 83 U.S. SURVEY FEET



MONUMENT NO.: 57

GEODIETIC POSITION NAD83 (1993)

LATITUDE: N31°14'42.59099"

LONGITUDE: W94°45'23.21273"

ELLIPSOID HEIGHT (APPROX.) 51.154 METERS

LOCATION MAP NO. _____
CITY MAP NO. _____
AERIAL MAP NO. _____
WATER/SEWER MAP NO. _____

TEXAS STATE PLANE COORDINATES, CENTRAL ZONE (4203) NAD 83 (U.S. SURVEY FEET) GRID VALUES. TO CONVERT TO SURFACE VALUES MULTIPLY BY THE COMBINED SCALE FACTOR (C.S.F.)

N= 10460271.792 E= 4038600.756 ELEV= 257.91' (GPS) C.S.F.= 1.00010430

GENERAL LOCATION: Located in front of Frontier Town Flea Market on south side of HWY 59 north.

MONUMENT DESCRIPTION: 3 1/2" Bronze cap set in 3' concrete monument and reinforced with 1/2" rebar

NOTES:

HORIZONTAL POSITIONS ARE RELATIVE TO NGS MONUMENT PID BY1106 (REDFIELD 2). GPS ORTHOMETRIC VALUES ARE BASED ON NGVD 88 AND THEY SHOULD BE CONFIRMED DIFFERENTIAL LEVELING TO EXISTING NGS VERTICAL CONTROL.

COORDINATES ESTABLISHED: APRIL 2000

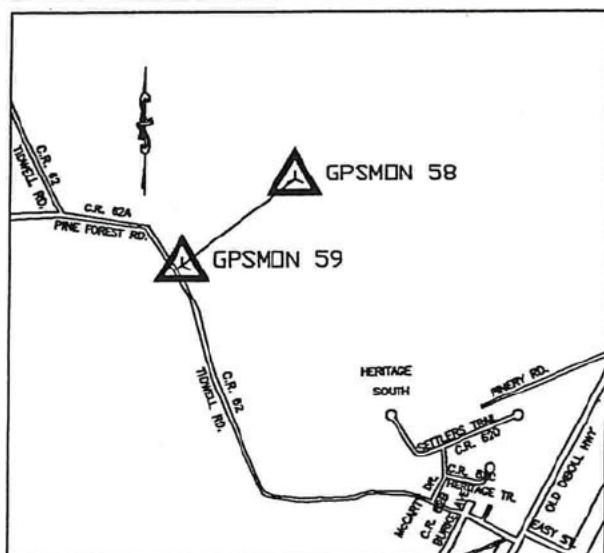


CITY OF LUFKIN

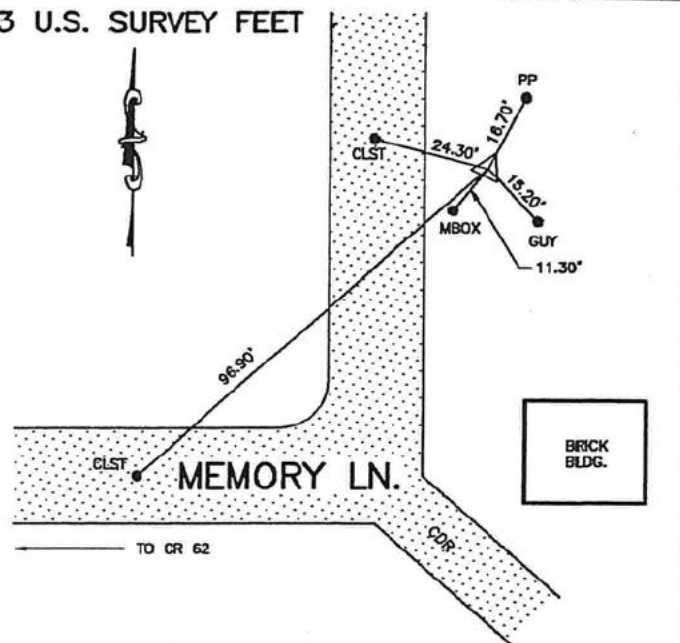
ENGINEERING DEPARTMENT
P. O. DRAWER 190
300 E. SHEPHERD
LUFKIN, TEXAS 79502-0190
PHONE: (409) 633-0414

G.P.S. MONUMENTATION

BY:  DATE: 7-31-00
GOODWIN-LASITER, INC.



NAD 83 U.S. SURVEY FEET



MONUMENT NO.: 58

GEODIETIC POSITION NAD83 (1993)

LATITUDE: N31°14'26.75419"

LONGITUDE: W94°46'33.70246"

ELLIPSOID HEIGHT (APPROX.) 48.414 METERS

TEXAS STATE PLANE COORDINATES, CENTRAL ZONE (4203) NAD 83 (U.S. SURVEY FEET) GRID VALUES. TO CONVERT TO SURFACE VALUES MULTIPLY BY THE COMBINED SCALE FACTOR (C.S.F.)

N= 10458367.661

E= 4032569.517

ELEV= 248.89' (GPS)

C.S.F.= 1.00010430

GENERAL LOCATION: Northeast approx. 1050' from intersection of CR 62 and Memory Ln. on east side of Memory Ln. (Rolling Hills Estates Subdivision).

MONUMENT DESCRIPTION: 3 1/2" Bronze cap set in 3' concrete monument and reinforced with 1/2" rebar

NOTES:

HORIZONTAL POSITIONS ARE RELATIVE TO NGS MONUMENT PID BY1106 (REDFIELD 2). GPS ORTHOMETRIC VALUES ARE BASED ON NGVD 88 AND THEY SHOULD BE CONFIRMED DIFFERENTIAL LEVELING TO EXISTING NGS VERTICAL CONTROL.

COORDINATES ESTABLISHED: APRIL 2000



CITY OF LUFKIN

ENGINEERING DEPARTMENT
P. O. DRAWER 190
300 E. SHEPHERD
LUFKIN, TEXAS 79502-0190
PHONE: (409) 633-0414

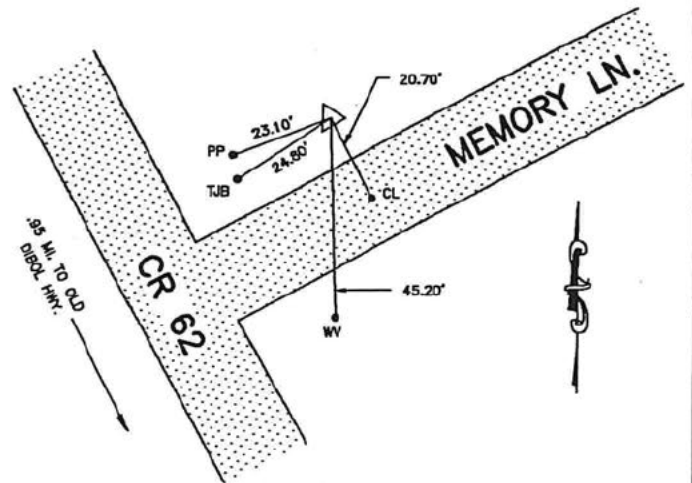
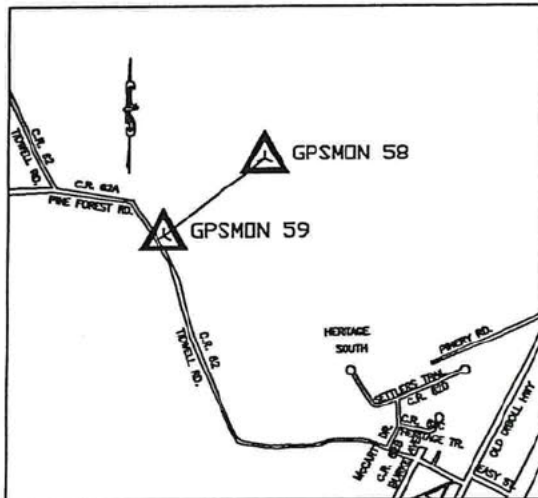
G.P.S. MONUMENTATION

BY: 

GOODWIN-LASITER, INC.

DATE: 7-31-06

NAD 83 U.S. SURVEY FEET



MONUMENT NO.: 59

GEODIETIC POSITION NAD83 (1993)

LATITUDE: N31°14'22.77784"

LONGITUDE: W94°46'44.18103"

ELLIPSOID HEIGHT (APPROX.) 49.379 METERS

LOCATION MAP NO. _____
CITY MAP NO. _____
AERIAL MAP NO. _____
WATER/SEWER MAP NO. _____

TEXAS STATE PLANE COORDINATES, CENTRAL ZONE (4203) NAD 83 (U.S. SURVEY FEET) GRID VALUES. TO CONVERT TO SURFACE VALUES MULTIPLY BY THE COMBINED SCALE FACTOR (C.S.F.)

N= 10457921.008

E= 4031681.077

ELEV= 252.05' (GPS) C.S.F.= 1.00010430

GENERAL LOCATION: Northeast about 50' from intersection of CR 62 and Memory Ln. on north side of Memory Ln. (Rolling Hills Estate Subdivision)

MONUMENT DESCRIPTION: 3 1/2" Bronze cap set in 3' concrete monument and reinforced with 1/2" rebar

NOTES:

HORIZONTAL POSITIONS ARE RELATIVE TO NGS MONUMENT PID BY1106 (REDFIELD 2).
GPS ORTHOMETRIC VALUES ARE BASED ON NGVD 88 AND THEY SHOULD BE CONFIRMED
DIFFERENTIAL LEVELING TO EXISTING NGS VERTICAL CONTROL.

COORDINATES ESTABLISHED: APRIL 2000

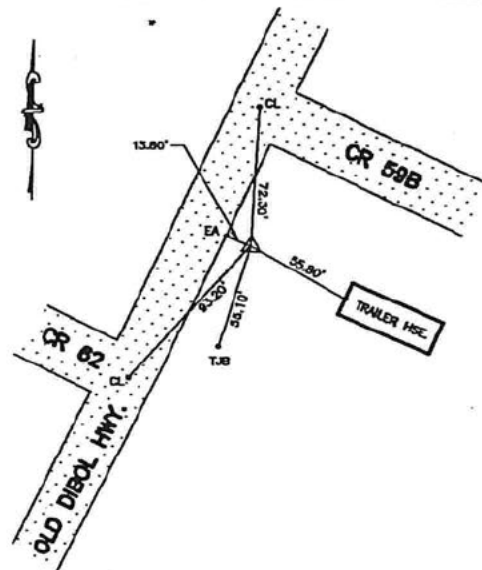


CITY OF LUFKIN

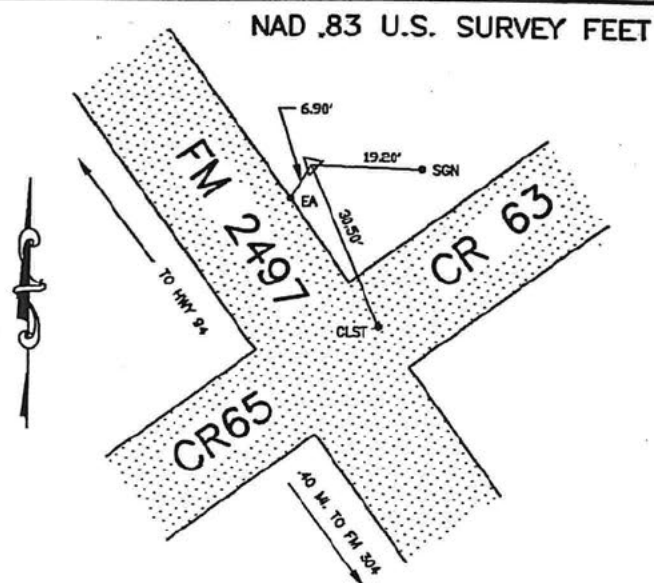
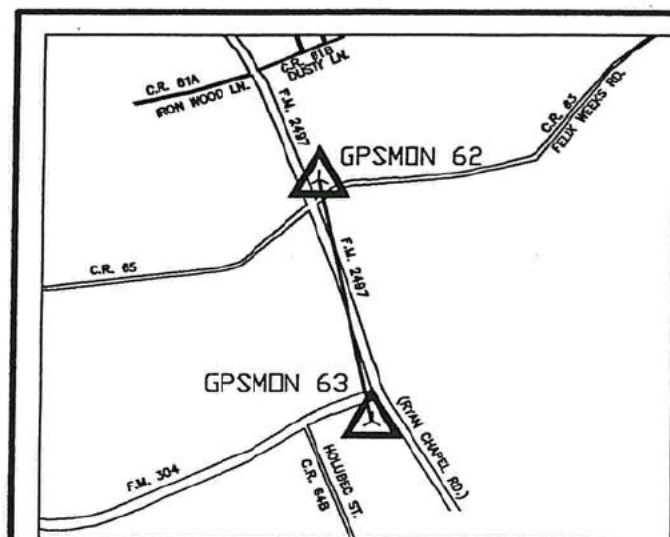
ENGINEERING DEPARTMENT
P. O. DRAWER 190
300 E. SHEPHERD
LUFKIN, TEXAS 79502-0190
PHONE: (409) 633-0414

G.P.S. MONUMENTATION

BY: [REDACTED] DATE: 7-31-00
GOODWIN-LASITER, INC.



DATE: 7-31-00



MONUMENT NO.: 62

GEODIETIC POSITION NAD83 (1993)

LATITUDE: N31°13'19.26755"

LONGITUDE: W94°47'17.19178"

ELLIPSOID HEIGHT (APPROX.) 50.958 METERS

TEXAS STATE PLANE COORDINATES, CENTRAL ZONE (4203) NAD 83 (U.S. SURVEY FEET) GRID VALUES. TO CONVERT TO SURFACE VALUES MULTIPLY BY THE COMBINED SCALE FACTOR (C.S.F.)

N= 10451369.461

E= 4029138.742

ELEV= 257.26' (GPS)

C.S.F.= 1.00010430

GENERAL LOCATION: Northwest from intersection of CR 65, FM 297 and CR 63 on east side of FM 2497.

MONUMENT DESCRIPTION: 3 1/2" Bronze cap set in 3' concrete monument and reinforced with 1/2" rebar

NOTES:

HORIZONTAL POSITIONS ARE RELATIVE TO NGS MONUMENT PID BY1106 (REDFIELD 2). GPS ORTHOMETRIC VALUES ARE BASED ON NGVD 88 AND THEY SHOULD BE CONFIRMED DIFFERENTIAL LEVELING TO EXISTING NGS VERTICAL CONTROL

COORDINATES ESTABLISHED: APRIL 2000



CITY OF LUFKIN

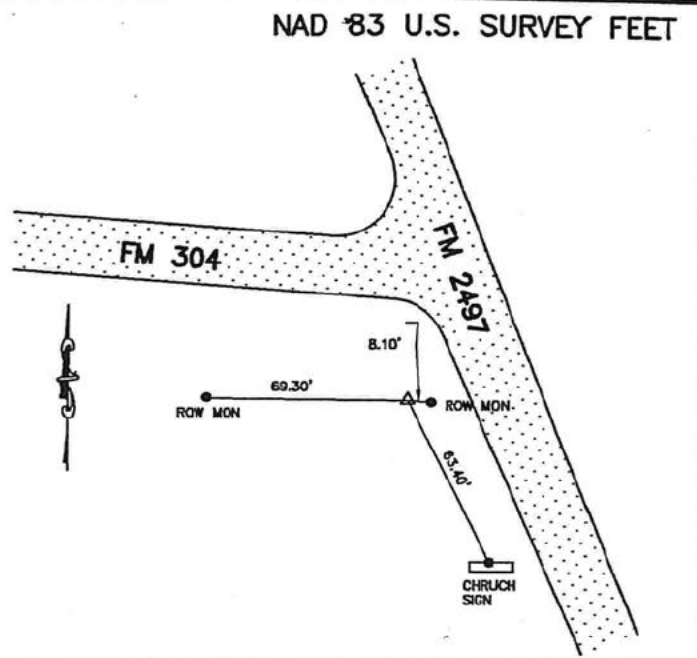
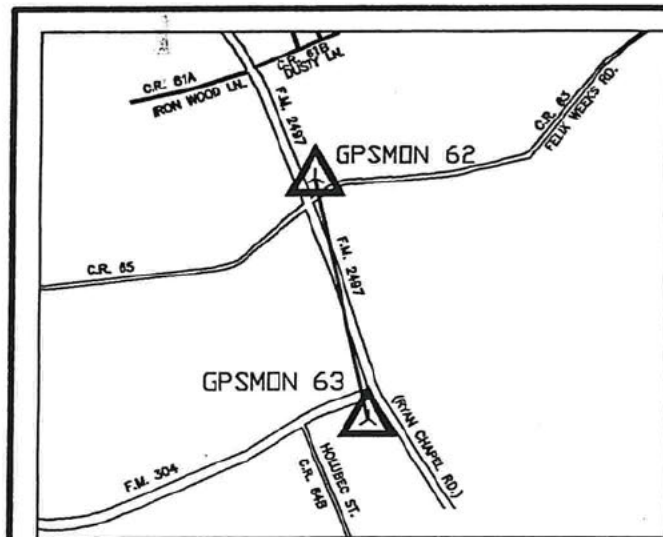
ENGINEERING DEPARTMENT
P. O. DRAWER 190
300 E. SHEPHERD
LUFKIN, TEXAS 79502-0190
PHONE: (409) 633-0414

G.P.S. MONUMENTATION

BY: 

DATE: 7-31-00

GOODWIN-LASITER, INC.



MONUMENT NO.: 63

GEODIETIC POSITION NAD83 (1993)

LATITUDE: N31°13'00.27939"

LONGITUDE: W94°47'10.84103"

ELLIPSOID HEIGHT (APPROX.) 56.379 METERS

TEXAS STATE PLANE COORDINATES, CENTRAL ZONE (4203) NAD 83 (U.S. SURVEY FEET) GRID VALUES. TO CONVERT TO SURFACE VALUES MULTIPLY BY THE COMBINED SCALE FACTOR (C.S.F.)

N= 10449480.906

E= 4029785.086

ELEV= 275.06' (GPS)

C.S.F.= 1.00010430

GENERAL LOCATION: South from intersection of FM 304 and FM 2497 on west side of FM 2497 next to ROW monument.

MONUMENT DESCRIPTION: 3 1/2" Bronze cap set in 3' concrete monument and reinforced with 1/2" rebar

NOTES:

HORIZONTAL POSITIONS ARE RELATIVE TO NGS MONUMENT PID BY1106 (REDFIELD 2). GPS ORTHOMETRIC VALUES ARE BASED ON NGVD 88 AND THEY SHOULD BE CONFIRMED DIFFERENTIAL LEVELING TO EXISTING NGS VERTICAL CONTROL.

COORDINATES ESTABLISHED: APRIL 2000



CITY OF LUFKIN

ENGINEERING DEPARTMENT
P. O. DRAWER 190
300 E. SHEPHERD
LUFKIN, TEXAS 79502-0190
PHONE: (409) 633-0414

G.P.S. MONUMENTATION

BY: [REDACTED]

DATE: 7-31-00

GOODWIN-LASITER, INC.