

INTRODUCTION

On November 8, 2018, MAYOTTEgroup Architects facilitated a Visioning Town Hall Session that included Mason Library and CATL faculty and members of the public. A list of attendees can be found below (pages 20-21).

VISIONING SESSION EXECUTIVE SUMMARY

The information gathered during the Town Hall Meeting will be used throughout the project planning and design process. The Town Hall meeting consisted of two exercises: a Building Character Vision Exercise and a Functional / Dream List Discussion.

Building Character Vision Exercise

The Building Character Vision Exercise consisted of participants indicating their "likes" and "dislikes" of various library images placed throughout the room. Participants were given green dots to indicate their "likes" and red dots to indicate their "dislikes" which were to be placed on the individual pictures. This exercise is used to establish a common goal and develop a vocabulary of the likes and dislikes of the participants.

The images were arranged into similar groupings which included: Collection, Children's Area, Activity Room, Group Study / Tutoring, Reading Room, Bookstore / Cafe, and Computers / Technology. The group collectively discussed many of the images and the reasoning for the green and red dots. The following pages (page 2-18) record all of the noted images and the related comments discussed regarding the pictures.

Overall, the group discussed the need for highly functional, organized spaces that are bright and cheery. Flexibility was noted on several occasions, recognizing that the Mason Library has a fixed amount of space and the need for multiple programs. The group identified that environments with style / character were preferred versus more sterile / traditional settings.

Functional / Dream List Discussion

The Functional / Dream List Discussion provided several key areas of consideration. This discussion was an open, less directed conversation as compared to the Building Character Exercise. Individuals were encouraged to introduce any library / building improvement considerations and a group discussion followed. Several of the key discussions are summarized below. The entire Functional / Dream List can be found below on page 19.

Accessibility:

This issue was noted by several persons as problematic. Adjustments to the building entrance, restroom facilities, and access to the upper / lower floors need to be made for the building to be accessible by all in the future.

Functional / Flexible Spaces:

The group discussed the need for functional and flexible spaces. This included spaces that would serve the library patrons, such as the children's area, periodical reading, and study areas, as well as staff areas. The traffic flow through the spaces / collection and circulation desk location was noted as needing improvement.

Building Upgrades:

While a separate building assessment is being conducted, several comments included improvement of the existing building systems to seem less primitive.

BUILDING CHARACTER VISION EXERCISE

Collection



FEEDBACK

(4) Green
(0) Red



FEEDBACK

(0) Green
(2) Red



(6) Green
(0) Red



(4) Green
(2) Red



(2) Green
(0) Red



(2) Green
(0) Red



(4) Green (0) Red

- Not a practical use of space
- Light flow is blocked if shelves are raised
- Style is bland and industrial

BUILDING CHARACTER VISION EXERCISE



FEEDBACK

(5) Green
(0) Red



FEEDBACK

(2) Green
(0) Red



(1) Green (4) Red

- Layout feels unorganized and unhelpful
- Looks very busy
- No low shelving is hard to reach
- Looks too "cookie-cutter" typical



(8) Green (1) Red

- Provides outreach to the community
- Easily accessible
- Creates a connection to the walking neighborhood

BUILDING CHARACTER VISION EXERCISE

Children's Area



FEEDBACK

(2) Green
(0) Red



FEEDBACK

(1) Green
(1) Red



(5) Green
(0) Red



(0) Green
(1) Red



(2) Green
(0) Red



(2) Green
(0) Red



(3) Green
(1) Red



(1) Green
(0) Red

BUILDING CHARACTER VISION EXERCISE



FEEDBACK

- (1) Green
- (1) Red



FEEDBACK

- (1) Green
- (2) Red



- (0) Green
- (2) Red



- (3) Green (1) Red

- Too much yellow
- Not a practical use of space
- Openness creates a lot of wasted space
- Will be dated quickly



- (7) Green (0) Red

- Colorful elements
- Has a lot of empty space
- Holds fewer books

BUILDING CHARACTER VISION EXERCISE

FEEDBACK

(10) Green (0) Red

- Feels happy, fun, and imaginative
- Has a playground atmosphere
- House creates space for children to read



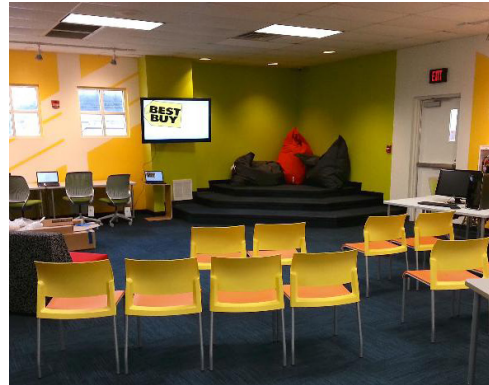
BUILDING CHARACTER VISION EXERCISE

Activity Room



FEEDBACK

(2) Green
(1) Red



FEEDBACK

(3) Green
(0) Red



(4) Green
(0) Red



(0) Green
(2) Red



(0) Green
(5) Red



(3) Green
(2) Red



(4) Green
(1) Red



(4) Green
(0) Red

BUILDING CHARACTER VISION EXERCISE

FEEDBACK

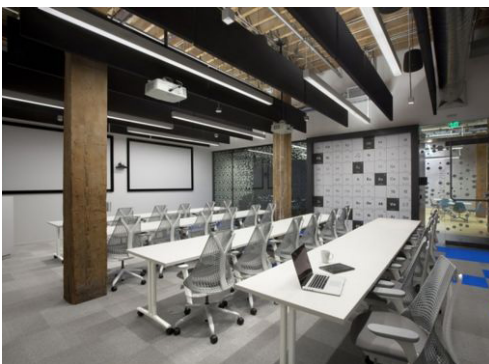


(0) Green
(4) Red



(3) Green (0) Red

- Space is flexible
- There is seating within the books
- Spacious for a large turnout



(0) Green (6) Red

- Has a cold, sterile atmosphere
- Feels too industrial

BUILDING CHARACTER VISION EXERCISE

Group Study - Tutoring



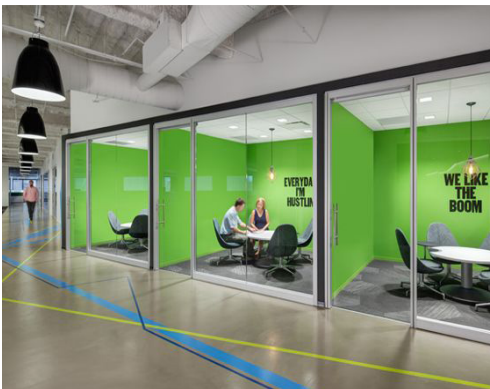
FEEDBACK

(4) Green
(0) Red



FEEDBACK

(3) Green
(1) Red



(1) Green
(2) Red



(0) Green
(1) Red



(5) Green
(0) Red



(4) Green
(1) Red



(10) Green (0) Red

- Has enclosed spaces for privacy
- Colors are bright and cheerful
- Glass allows for supervision
- Could include white board, tv, and projector

BUILDING CHARACTER VISION EXERCISE



FEEDBACK

- (1) Green
- (1) Red

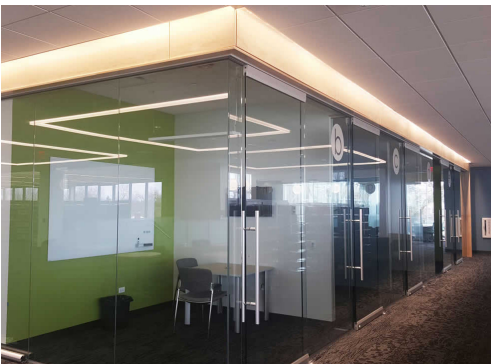


FEEDBACK

- (1) Green
- (3) Red



- (4) Green
- (0) Red



- (1) Green (4) Red

- Spaces are too exposed
- Units are like fish bowls

BUILDING CHARACTER VISION EXERCISE

Reading Room



FEEDBACK

(6) Green
(1) Red



FEEDBACK

(0) Green
(1) Red



(11) Green
(3) Red



(2) Green
(2) Red



(4) Green
(3) Red



(0) Green
(1) Red



(14) Green (1) Red

- Feels cozy, warm, and inviting
- Not much style to the space
- Layout is crowded

BUILDING CHARACTER VISION EXERCISE



FEEDBACK

(1) Green
(2) Red



FEEDBACK

(7) Green
(0) Red



(1) Green
(2) Red



(2) Green
(1) Red



(1) Green
(0) Red



(0) Green
(1) Red



(1) Green
(2) Red



(3) Green
(0) Red

BUILDING CHARACTER VISION EXERCISE

FEEDBACK

(8) Green (0) Red

- Tiling image is appealing
- Room is open and spacious



BUILDING CHARACTER VISION EXERCISE

Bookstore / Cafe



FEEDBACK

(1) Green
(3) Red



FEEDBACK

(3) Green
(0) Red



(2) Green
(2) Red



(1) Green
(4) Red



(8) Green (3) Red

- Books within reaching distance yet still open
- Similar to a little coffee bar
- Very stimulating, in a good way
- "Seating in a place where seating can't be"

BUILDING CHARACTER VISION EXERCISE

Circulation Desk



FEEDBACK

(1) Green
(0) Red



FEEDBACK

(4) Green
(0) Red



(5) Green
(0) Red



(2) Green
(0) Red



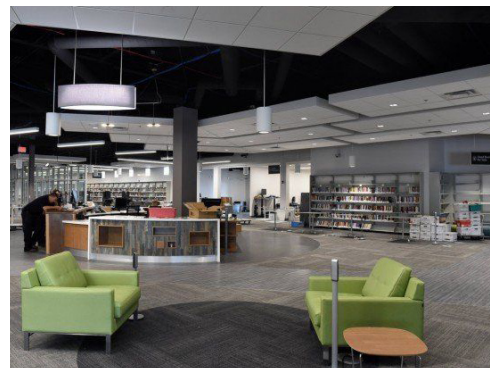
(1) Green
(1) Red



(0) Green
(3) Red



(5) Green
(1) Red



(1) Green
(2) Red

BUILDING CHARACTER VISION EXERCISE

FEEDBACK



(8) Green (0) Red

- Strategic placement is beneficial
- Desk is child height
- Arc of desk is nice



(1) Green (4) Red

- Looks like an auto-parts store
- Font is bad

BUILDING CHARACTER VISION EXERCISE

Technology / Computers



FEEDBACK

(3) Green
(3) Red



FEEDBACK

(1) Green
(4) Red



(3) Green
(1) Red



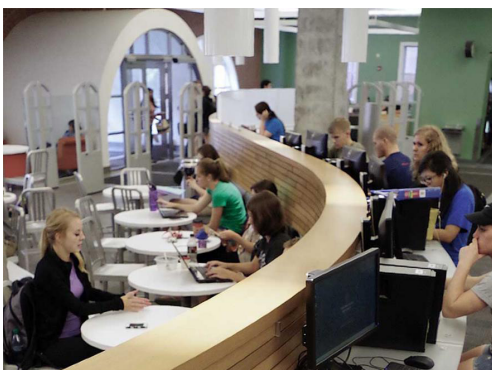
(3) Green
(1) Red



(7) Green
(2) Red



(2) Green
(0) Red



(7) Green
(1) Red

BUILDING CHARACTER VISION EXERCISE

Technology / Computers

FEEDBACK



(3) Green (5) Red

- A picnic table that never ends
- Space seems cluttered and dated
- Cables are all exposed



(7) Green (3) Red

- Neat and spacious
- No creativity
- Feels too traditional

FUNCTIONAL / DREAM LIST DISCUSSION

During this exercise, the group discussed several key improvement areas for consideration. The discussion was open for any participant to introduce considerations to the library function or building and a group discussion followed.

Makerspace (Flexible Space)

- Has equipment one would use on occasion (would not purchase themselves)
- A/V; video production, sewing machines, etc.
- Space can take on many different forms
- Allows for classes: arts and crafts, skills, bike repair

Functional Circulation Desk

- Currently in poor location
- Create a new connection to public spaces
- Definitive separation between public and private
- Safety and privacy a priority

Good Traffic Flow

- New connection to public spaces
- Wheelchair / stroller travel through public areas
- Multiple entries make circulation difficult / confusing
- Ramp entrance not visible / near main entrance

Accessibility (Handicap)

- Ramp entry has no ADA push button
- No ADA restroom available

Elevator

- Make basement and second floor more accessible / usable
- Necessity
- Cost is an issue

Ergonomic Shelving

- Books too close to the floor, difficult to reach

We Love the way the Collection Works!

- Only 25% requests in Mason
- Most patrons browse / select from stacks

Convenient Book Drop-Off (For Staff and Patrons)

- After hours return that is connected to the building
- Don't have to get out of the car

Right Space for the Right Collection

- Less graphic novels / young adult books

Restrooms Available to the Public

- Exterior entrance to restrooms
- Needed in the downtown

Youth Programs Critical

- Functional, flexible spaces
- Stroller parking
- Enjoy holding children's events surrounded by books
- Need seating for adults within the children's space
- After-school activities

Lower Level not to be so Primitive

- More efficiently use the space we have
- Create a less scary space for children
- Renovate restrooms

Community Group Spaces

- Currently use city hall
- CATL requires a library card to reserve a room
- Meetings / Activities at all hours
- Over-nighters (for kids and adults)