

CITY OF MILAN PARKS AND RECREATION MASTER PLAN 2014-2018



Draft for Public Review
October 31, 2013



ACKNOWLEDGEMENTS

City Council

Kym Muckler, Mayor

Michael Armitage

Martha Churchill

Douglas Gilson

Dominic Hamden

Brett Moyer

Michael Williams

Parks and Recreation Commission

Ann Gee, Chairperson

Michael Carthage

Daniel Fromm

Rodney Hill

Mark Klein

Cindy Swope

Douglas Gilson, City Council Representative

City Staff

Robert Grostick, Department of Public Works Director & Interim City Administrator

Sherry Steinwedel, City Clerk/Treasurer & Interim City Administrator

Ellen Bell, Interim Director of Parks & Recreation

Adopted by the Milan City Council on _____

Assisted by: Carlisle/Wortman Associates, Inc.

CONTENTS

INTRODUCTION

What this Plan Contains.....	1
Planning and Public Input Process.....	1

COMMUNITY DESCRIPTION

Population Growth and Characteristics.....	4
Housing Characteristics.....	8
Land Use Patterns and Development Trends.....	9
Natural Features.....	11
Planning Initiatives	14
County and Regional Plans	14
Trail and Pathway Initiatives.....	16
Other Local Initiatives.....	19

ADMINISTRATIVE STRUCTURE

Administration.....	22
Funding and Budget.....	23
Volunteers and Partnerships.....	24

PARKS & RECREATION RESOURCES

Recreation Facilities.....	25
City Facilities	25
School and Private Facilities	33
Regional Recreation Facilities	35
Recreation Programs	39
Accessibility Assessment and Grant assisted Projects.....	41

PUBLIC PARTICIPATION AND NEEDS ASSESSMENT

National and State Recreation Trends.....	43
Park Acreage Comparison.....	45
Public Input	46
Public Review and Public Hearing	48

GOALS AND OBJECTIVES

Goals	49
Objectives.....	49

ACTION PROGRAM

Action Plan	51
Project Schedule.....	59
Implementation Strategies	63

SUPPORTING DOCUMENTS

Public Input Comments	69
Notice of Draft Plan Availability and Public Hearing	72
Parks and Recreation Commission Resolution.....	73
Minutes of Public Hearing	74
City Council Resolution	75
Letters of Transmittal	76

LIST OF TABLES

Table 1. Regional Population Change	4
Table 2. Population and Household, 2000-2040	5
Table 3. Age, 2010-2040	6
Table 4. Race and Hispanic Origin, 2010.....	6
Table 5. Employment by Industrial Class, 2007-2011	7
Table 6. Housing, 2000-2010	8
Table 7. Housing Tenure, 2000-2010.....	8
Table 8. 2009 Land Use.....	9
Table 9. Budget Summary.....	23
Table 10. Regional Parks and Preserves	36
Table 11. Accessibility Assessment	41
Table 12. MDNR Grant Assisted Projects.....	42
Table 13. National Sports Participation	43
Table 14. Comparison to Suggested Park land Acreage Standards.....	45
Table 15. Summary of Comments	46
Table 16. Project Schedule.....	59

LIST OF FIGURES

Figure 1. Regional Context.....	3
Figure 2. Population, 1980-2040	4
Figure 3. Existing Land Use	10
Figure 4. Natural Features	12
Figure 5. Regional Greenways Vision	16
Figure 6. Milan Greenway Concept Plan	17
Figure 7. Milan Walking Map	18
Figure 8. Milan Parking Lot Design	20
Figure 9. City of Milan Organizational Chart.....	21
Figure 10. Parks and Community Facilities	26
Figure 11. Regional Recreation Facilities Around Milan.....	35
Figure 12. Nature Park Development Plan	52
Figure 13. Concept Plan for Hideaway Park.....	53
Figure 14. Hideaway Park-Ford Lake Area Development Plan.....	53
Figure 15. Wilson Park Development Plan	54
Figure 16. Softball Park Development Plan	55
Figure 17. Sanford Road Park Development Plan	56
Figure 18. Eagle Springs Subdivision Park Concept Plans.....	57

INTRODUCTION

The City of Milan Parks and Recreation Master Plan articulates a vision for the City's parks. The plan will guide the community's park planning and development efforts over the next five years, through 2018.

The plan is also intended to meet state standards for community recreation planning that are necessary to remain eligible for grant programs.

WHAT THIS PLAN CONTAINS

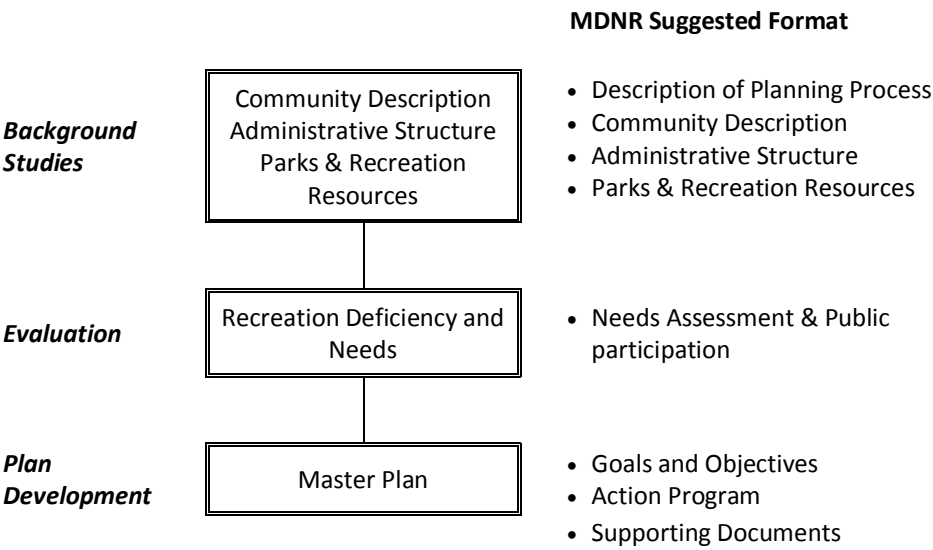
The City of Milan Parks and Recreation Master Plan document follows the format suggested by the Michigan Department of Natural Resources (MDNR) in the *Guidelines for the Development of Community Park, Recreation, Open Space, and Greenway Plans* (2012). It begins with a brief overview of the plan as well as a description of the **Planning Process** which was used to develop the plan. The plan then presents a **Community Description**, providing information on both the social and physical characteristics of the community. The City's **Administrative Structure** is next described, including information on budget and funding. A detailed inventory of the **Parks and Recreation Resources** follows this section and describes the existing recreational resources located in and around Milan. The **Public Participation and Needs Assessment** section presents the input received from City officials, staff, and residents, which helped in formulating the plan's **Goals and Objectives**. The **Action Program** then provides an action plan and strategies for implementation. Finally, the **Supporting Documents** include the resolutions and notices documenting the plan's adoption by the Milan City Council.

PLANNING PROCESS

The process used to generate the plan consisted of three phases: background studies, evaluation, and plan development:

1. **Background Studies.** This phase involved gathering and updating information from census data, existing documents, plans, and from field observations. The information is organized into three main sections: community description, administrative structure, and parks and recreation resources.
2. **Evaluation.** The second phase in the planning process consisted of an analysis of the information compiled to determine recreation deficiencies and needs. Public input to assess needs was sought at this level. Input from City officials and the members of the Parks and Recreation Commission was also used.
3. **Plan Development.** Finally, the last phase in the process involved plan development and adoption. Goals and objectives were formulated and a specific action plan developed with strategies for implementation recommended.

The following diagram illustrates the planning process and how it corresponds to the MDNR suggested format.



COMMUNITY DESCRIPTION

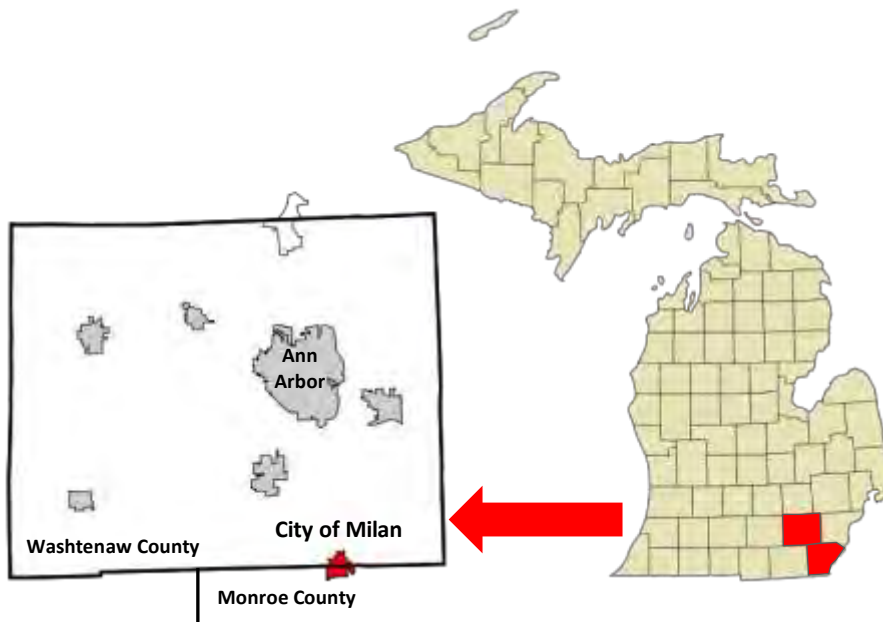
Located in both Washtenaw County and Monroe County, the City of Milan is the planning area and jurisdiction covered by this plan. The City is located approximately 15 miles south of Ann Arbor, 40 miles north of Toledo and 45 miles west of Detroit. It is bordered by York Township to the north, Augusta Township to the northeast, Milan Township to the south, and London Township to the southeast.

The settlement of Milan, originally called Tolansville, was created because of easy accessibility to the Saline River and a plank road that ran from Monroe to Saline. The plank road was vital in providing circulation throughout the region, and Milan saw heavy amounts of traffic on the road throughout the mid-nineteenth century. Saw and flour mills were built throughout the mid to late-nineteenth century, all of which were eventually purchased by the Ford Motor Company in 1936. The industrial character of Milan during its early years played a large role in its current physical layout and land use patterns.



Ford Lake Dam

Figure 1. Regional Context



Source: Wikipedia

Today, Washtenaw County is the sixth largest county in the State of Michigan while Monroe County is the sixteenth largest out of 83 total counties in Michigan. Both counties are located in the Southeast Michigan Council of Governments (SEMCOG) region. SEMCOG is the regional planning agency that conducts planning studies and maintains a comprehensive database of information about the counties of Livingston, Oakland, Macomb, St. Clair, Wayne, Washtenaw, and Monroe. According to SEMCOG, the Ann Arbor area located north of the City of Milan, is one of the fastest growing areas in the region.

POPULATION GROWTH AND CHARACTERISTICS

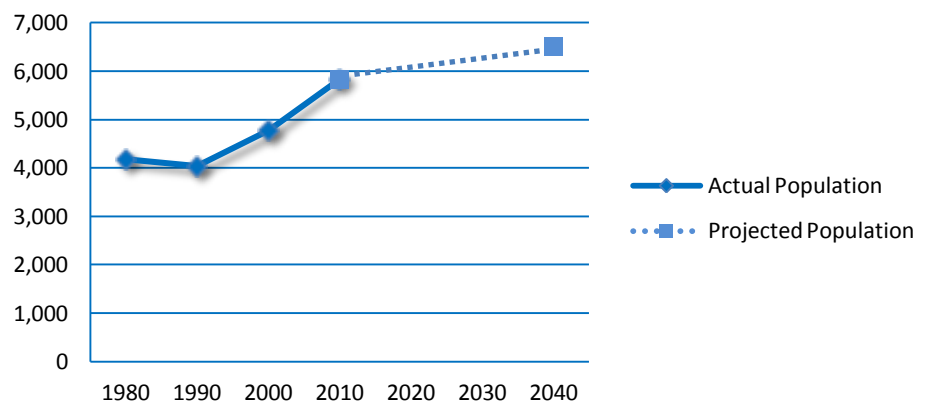
The population of City of Milan has seen continued increase in the last 30 years. Between 2000 and 2010 alone, the total population of the City of Milan increased by 22 percent.

In the last 30 years, Milan counted the following numbers of people:

- 4,182 in 1980,
- 4,775 in 2000, and
- 4,040 in 1990,
- 5,836 in 2010.

SEMCOG estimates that 5,907 people lived in the City of Milan in 2012, and projects that 6,511 people will live in the City in 2040 (July 2013 Community Profile). This represents a 56 percent population growth from 1980 to 2040.

Figure 2. Population, 1980-2040



Source: SEMCOG Community Profile and U.S. Census Bureau

The City of Milan's 22 percent population increase between 2000 and 2010 was one of the highest growth-rates in the immediate region; only Augusta Township exhibited a higher growth rate at 40 percent. Milan's growth rate between 2000 and 2010 exceeded that of both Washtenaw and Monroe counties.

Table 1. Regional Population Change

	2000 Census	2010 Census	Percent Change 2000-2010
Milan	4,775	5,836	22%
Augusta Township	4,813	6,745	40%
London Township	3,024	3,048	0.8%
Milan Township	1,670	1,601	-4.1%
York Township	7,392	8,708	18%
Washtenaw County	322,895	344,791	6.8%
Monroe County	145,945	152,021	4.2%

Source: SEMCOG Community Profile and U.S. Census Bureau

In the last 30 years, Milan counted the following numbers of household:

- 1,497 in 1980,
- 1,923 in 2000, and
- 1,543 in 1990,
- 2,308 in 2010.

The number of households with children increased from 749 in 2000 to 888 in 2010, reflecting a 19 percent increase, while the number of households with seniors increased from 383 in 2000 to 431 in 2010, reflecting a 13 percent increase in the 10-year span.

Washtenaw County exhibited a 10 percent increase in the number of total households between 2000 and 2010, with no increase in households with children and a 37 percent increase in households with seniors. Monroe County exhibited an 8 percent increase in total households between 2000 and 2010, with a 7 percent decrease in households with children and a 26 percent increase in households with seniors

SEMCOG estimates that the City of Milan currently has 2,324 households, and projects that there will be 2,828 households in 2040 (July 2013 Community Profile). This represents an 89 percent household growth from 1980 to 2040.

In summary, there has been a continued increase in population and households in the City since 1980. Recent trends since 2000 indicate a fairly large growth of the population, inconsistent with the stable or declining growth observed generally in Southeast Michigan. The increase of households with seniors, age 65 or more, is particularly notable. Projections show that this trend will continue for both population and households, while household size will continue to decrease. These numbers reflect many factors including families with fewer children, aging population, changes in the mix of households, and recent economic conditions.

Table 2. Population and Household, 2000-2040

	2000 Census	2010 Census	July 2013 (SEMCOG)	2040 Forecast
Population	4,775	5,836	5,907	6,511
Households	1,923	2,308	2,324	2,828
Household Size	2.47	2.52	2.54	2.30
Household Types				
Households with Children	749	888	n/a	n/a
Households with Seniors	383	431	n/a	n/a

n/a: not available

Source: SEMCOG Community Profile and U.S. Census Bureau

Children and Seniors

Projections by SEMCOG indicate that by 2040, the number of children (ages 0-17) will decrease by 376 representing a 23 percent decrease from 2010 numbers. On the other hand, the number of people 65 years and older will increase by 803, representing a 142 percent increase from 2010. The population aged 18 to 24 is also projected to increase by 37 percent between 2010 and 2040.

Table 3. Age, 2010-2040

	2010 Census	2040 Forecast	Change 2010-2040
0 - 4	447	345	-102
5 – 17	1,186	912	-274
18 – 24	495	679	184
25-34	838	863	25
35-59	2,068	2,100	32
60-64	237	244	7
65-74	275	579	304
75+	290	789	499

Source: SEMCOG Community Profile and U.S. Census Bureau

Diversity

From 2000 to 2010, Milan became slightly more diverse with the white population decreasing from 92.8 percent to 88.9 percent of the total City population, while persons of other racial and ethnic origins increased. Blacks, Asians, and other races make up 6.5 percent of the total population. Hispanics of any race comprise about 4.6 percent of the City population.

Table 4. Race and Hispanic Origin, 2010

	2010 Census	
White	5,186	88.9%
Black	158	2.7%
Asian	49	0.8%
Multi-Racial	134	2.3%
Other Race	39	0.7%
Persons of Hispanic Origin	270	4.6%

Source: SEMCOG Community Profile and U.S. Census Bureau

Education

According to the American Community Survey, 27 percent of the population above age 25 held a bachelor's or higher degree in 2010. This is slightly below the SEMCOG area (29%) and Washtenaw County's (51%) numbers, but exceeds Monroe County's (17%) number.

Income

The American Community Survey indicates that the median household income in 2010 in City of Milan was \$61,932, down by 2.5 percent from 2000. The per capita income amounted to \$25,339 down by 19 percent from 2000. The American Community Survey reports an increase in the number of persons in poverty from 5 to 7.7 percent of the City population and an increase in the number of households in poverty from 6 to 8.2 percent from 2000 to 2010.

Employment

According to the American Community Survey, the strongest employment sectors in the City in 2010 were:

- Educational services and health care/social assistance,
- Manufacturing,
- Finance/Insurance and Real Estate,
- Cultural, accommodation and food services, and
- Retail trade

Fifty-nine percent of the employed population ages 16 and over were employed by the private sector and 18 percent were employed by the public sector.

Table 5. Employment by Industrial Class, 2007-2011

	2007-2011 ACS	Percent of Employed Population
Agriculture	26	0.9%
Construction	143	5.0%
Manufacturing	403	14.2%
Wholesale Trade	107	3.8%
Retail Trade	217	7.6%
Transportation & Warehousing	143	5.0%
Information	76	2.7%
Finance/Insurance & Real Estate	231	8.1%
Professional Management & Administrative Services	166	5.8%
Educational Services & Health Care/Social Assistance	803	28.3%
Cultural, Accommodation & Food Services	224	7.9%
Public Administration	119	4.2%
Other	183	6.4%
Total Employment	2,841	100%

Source: ACS Tables: 2007-2011

HOUSING CHARACTERISTICS

Growth in the local housing stock continued to exceed population growth between 2000 and 2010. The number of housing units increased by 536 units, or 27 percent, between 2000 and 2010, while the population has increased by 22 percent during the same period. During that time period, there was an increase of 52 percent for single family homes and 28 percent for multi-unit apartments. Decreases were observed for the other types of houses including duplex, townhouse/attached condo, and manufactured homes.

While single family homes are predominant (68%) in 2010, multi-unit apartments account for 20 percent of the housing stock. Based on building permits, single family detached housing is showing only a slight increase in the last three years.

Table 6. Housing, 2000-2010

	2000 Census	2010 Census	Change 2000-2010	New Units Permitted 2010-2013
Single-Family Detached	1,121	1,708	587	5
Duplex	148	66	-82	0
Townhouse/Attached Condo	230	204	-26	0
Multi-Unit Apartments	386	495	109	0
Manufactured Houses	103	51	-52	0
Total Housing Units	1,188	2,524	536	5

Source: SEMCOG Community Profile and U.S. Census Bureau

While renter-occupied units have increased between 2000 and 2010, most housing units in Milan, 64 percent, are still owner-occupied compared with 30 percent units renter-occupied. Seven percent of units were vacant in 2010, an increase of 3 percent from the 2000 number.

Table 7. Housing Tenure, 2000-2010

	2000 Census	2010 Census	Change 2000-2010
Owner Occupied Units	1,303	1,582	279
Renter Occupied Units	620	726	106
Vacant Units	76	179	103
Total Housing Units	1,999	2,487	488

Source: SEMCOG Community Profile and 5-year American Community Survey

According to the American Community Survey, the City's median housing value in 2010 was \$151,700, representing a decrease of \$9,667 from 2000. Similarly, the median gross rent was \$759 in 2010, representing a \$101 decrease from the 2000 number.

LAND USE PATTERNS AND DEVELOPMENT TRENDS

Milan personifies the characteristic mid-western small town. The relatively compact size and density of the City, the presence of a historical central business district, the age and diversity of the housing stock, the accessibility of various public and community facilities, and the mix of uses present in the community are all indicators of this traditional development pattern. The community has repeatedly indicated its preference to protect the features that contribute positively to this character.



Historic Milan



Downtown Milan

Today, single family residential is the predominant land use, representing 26 percent of all land. Almost 33 percent of the City is classified as agricultural/open space. These areas help to impart the open space and natural features that residents consider so appealing. Nearly 100 acres of land in the Public/Semi-Public category are dedicated as parks.

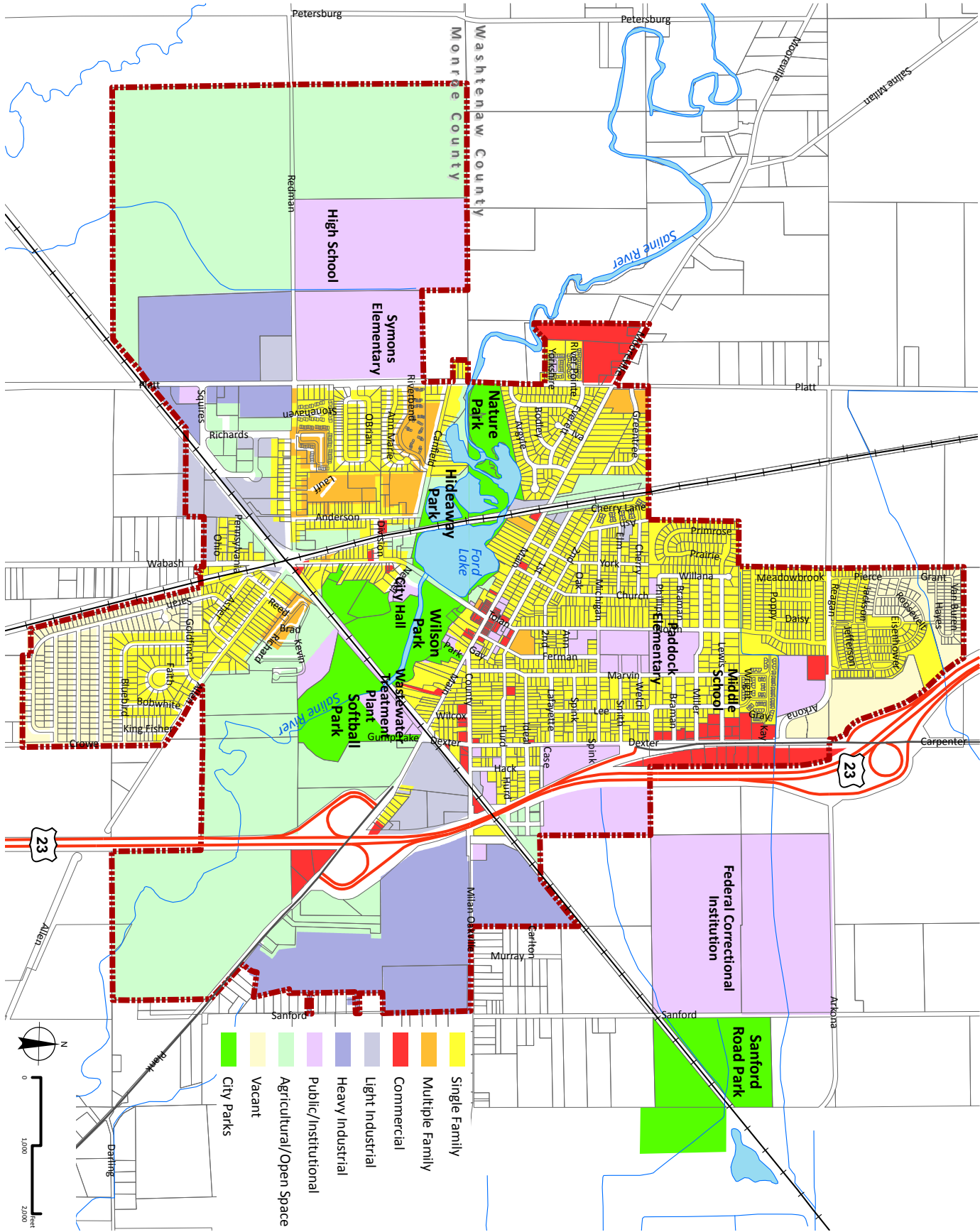
Table 8. 2009 Land Use

	Acres	Percent
Single family Residential	510	26.0%
Multi-family Residential	48	2.4%
Commercial	61	3.1%
Industrial	278	14.2%
Public/Institutional	305.7	15.6%
Open Space	645.8	32.9%
Vacant	113.8	5.8%
Total Acres	1,963.5	100%



The Old Fire Barn

Figure 3. Existing Land Use



NATURAL AND CULTURAL FEATURES

The natural features of the City of Milan have played a major role in influencing growth and development. Like much of Michigan's southern Lower Peninsula, the City's landscape was formed through glacial action. The City is located in the Maumee Lake Plain, a glacial lakebed. The movement of the glaciers shaped the topography and created many different types of soils. Plant communities, in turn, developed in response to soil conditions.

Geology, Topography and Soils

The City of Milan's basic topography is generally flat. Elevations generally range between 685 feet above sea level in the southeastern edge of the City to 705 feet above sea level in the northwestern edge. The geology of the area is typified as a flat, clay lake plain consisting of sandy soils and surface formations of sand and gravel. The sand and gravel were deposited by running waters from melting glaciers.

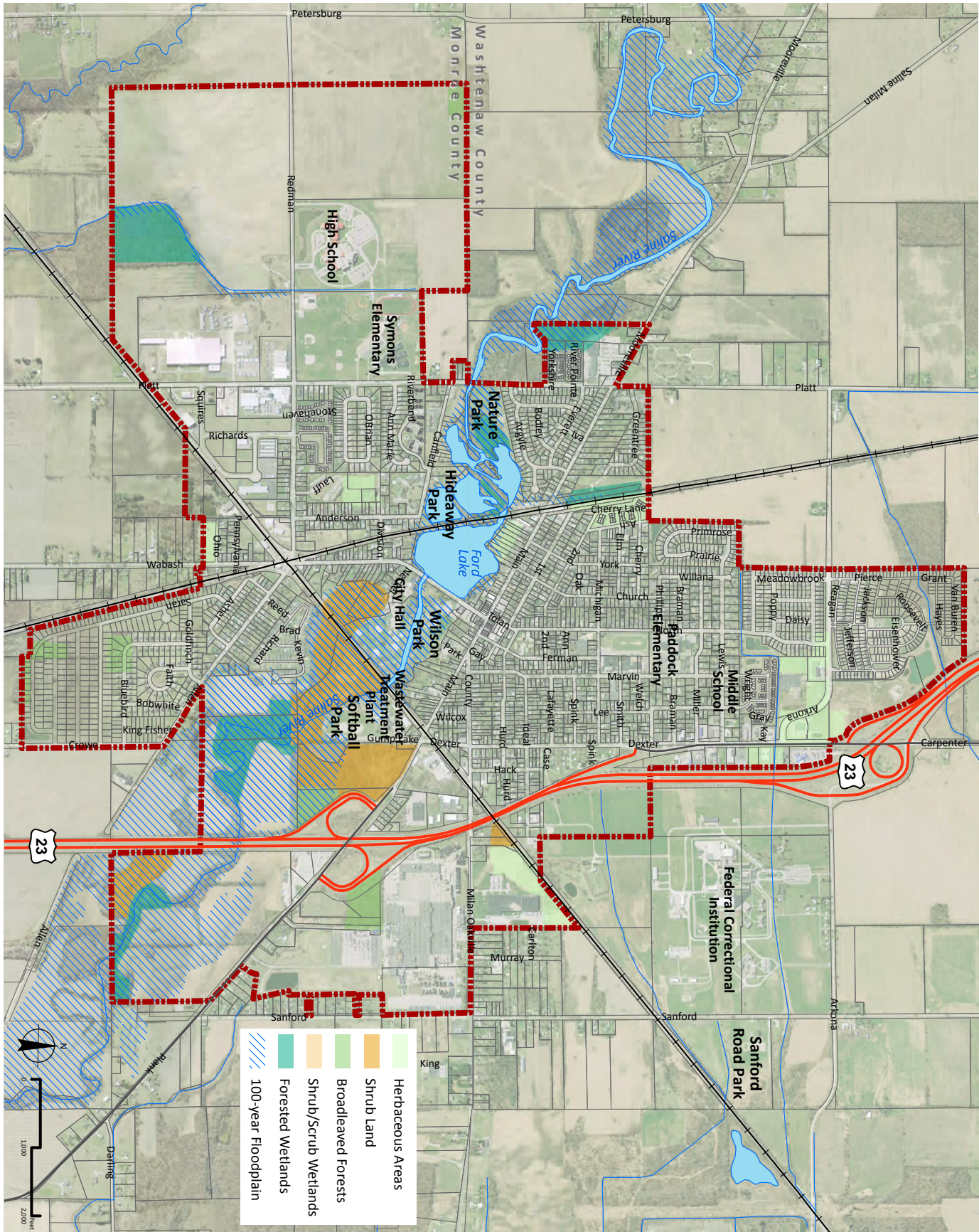
According to the *Soil Surveys of Washtenaw and Monroe Counties*, compiled by the USDA and Soil Conservation Service, the City of Milan is made up of three general soil categories. The first category covers the northeastern portion of the City, and is called the Spinks Loamy Sand soil series. The Spinks series consists of typically well-drained soils, ranges from 0 to 6 percent slope, and is fairly suitable for development. The second soil category is called the Wasepi sandy loam soil series and is located towards the northern, central, and southern portions of the City. Wasepi soil is somewhat poorly drained, and ranges from 0 to 4 percent slope. Much of the land that contains Wasepi soil is currently developed. The third soil category, Metamora sandy loam, is generally located in the central area of the City. This type of soil is a nearly level, somewhat poorly drained soil, suitable for buildings without basements.

Water Resources

The water resources in the City of Milan consist of the Saline River and Ford Lake. The Saline River flows from the northwest part of the City to the southeast border. Ford Lake was created in the 1930's by dredging the old mill pond which was constructed prior to 1910. Historically, these water features have been viewed either as a constraint or have been exploited for power or waste disposal. Increasingly, however, the community has become aware of the tremendous natural benefits that these features provide. The Saline River, Ford Lake, and adjacent land area are the primary natural features of the community. The water system is part of the Stony Creek sub-watershed and the larger River Raisin watershed.

According to the National Wetland Inventory, there are only two areas of wetlands within the City of Milan. A number of forested wetlands are located in association with the Saline River, particularly at Ford Lake and in the southeast corner of the City. An emergent wetland is also located in the southeast area of the City, adjacent to a pond in close proximity to the Saline River.

Figure 4. Natural Features



Floodplains

Generally, floodplains identified within the City of Milan are associated with the Saline River corridor (Figure 4). They are designated by the Federal Emergency Management Agency (FEMA). The 100-year floodplain is generally recognized as unsuitable for development and fill activities to minimize the risk of future flooding damage and increased flooding downstream from these tributaries.

Woodlands and Trees

Remaining wooded areas are located in wetland areas along the Saline River, Ford Lake, and other drains, as well as adjacent to the Plank Road/US-23 interchange. These mature trees and woodlands are valuable assets. Woodlands provide wildlife habitat, soil erosion control, climatic controls such as wind breaks and shade, air filtration, and natural buffers between land uses.

Historic and Scenic Resources

The City of Milan is rich with cultural resources, particularly historic structures. Historic resources of particular importance include the **Ford Village Industry** buildings, the **Hack House**, and the **Old Fire Barn**.

The **Ford Village Industries Buildings** are owned by the City and include the Community House, the Annex, and the Power Plant. During the period of active use by the Ford Village Industries, the Community House processed soybeans and later produced ignition coils, while the Annex was a storage barn. The Power Plant was added to provide sufficient power to the production that occurred in the Community House. These buildings are now owned by the City and part of the Milan Civic Center.

The Ford Village Industries Buildings are designated as a MotorCities Automobile National Heritage Area, one of 24 National Heritage Areas in the country. A National Heritage Area is designated by Congress and becomes part of the National Park Service, the Federal agency responsible for preserving nationally significant natural and cultural resources for present and future generations.

The **Hack House** was donated to the Milan Area Historical Society in 1980 and was placed on the National Register of Historic places in 1991. It is currently a museum of local history and farm life during the early 1900's.

The **Old Fire Barn** was completely restored in 1997, and is also currently owned by the Milan Area Historical Society. Currently, the Old Fire Barn serves as the local visitor's center and is leased to the Chamber of Commerce and the Downtown Development Authority for their offices.



The Community House

PLANNING INITIATIVES

While change is inevitable and growth in both population and housing will occur, the City of Milan is committed to managing that growth to enhance economic benefit, recreational activities, and overall quality of life for its residents. A number of planning initiatives related to parks, open space and greenway planning and development recently took place in the Milan area.

Recent plans and studies that relate to recreational and cultural issues near Milan include:

- 2003 Milan Organization for Regional Excellence
- 2010 Washtenaw County and 2008 Monroe County Recreation Plans
- 2006 Southeast Michigan Greenway Initiative
- 2011 Milan Greenway Project
- 2006 City of Milan Downtown Development Plan.

County and Regional Plans

2003 Milan Organization for Regional Excellence

The Milan Organization for Regional Excellence (MORE) was formed by a group of community leaders concerned about community issues and growth pressures in the Milan area in the early 2000's. The team consisted of representatives from the Milan Area Chamber of Commerce, the Townships of Augusta and York in Washtenaw County, London and Milan Townships in Monroe County, and the City of Milan, as well as participation from Milan Area Schools. Representatives from the five communities identified a goal of collaborating to develop a regional plan that addresses area growth-related issues.

The 2003 regional plan addressed several goals and strategies related to regional natural resource protection. Notable goals include the preservation of connected open space and natural systems, the development of a regional recreational needs assessment, and the recommendation of innovative conservation “cluster” zoning districts. The plan then outlined specific strategies to achieve these goals. Notable strategies include the establishment of a Milan area trust for land donation for parks, partnering with local land trusts and other organizations to acquire conservation easements, the creation of natural features overlay zones, and the provision of greenbelts to separate conflicting land uses.

2010 Washtenaw County and 2008 Monroe County Recreation Plans

The Washtenaw or Monroe counties recreational plans contain goals, objectives, and strategies that relate to Milan's recreational plans and growth. Notable goals and strategies are highlighted below:

Washtenaw

Develop, operate and maintain a comprehensive parks and recreation system - comprised of parks, preserves and recreation facilities - designed to meet present and future needs of all Washtenaw County residents.

- *Plan and design new parks and programs with special awareness of the changes in the County's population, transportation patterns and local economy.*
- *Seek an equitable distribution of parks and recreation facilities within Washtenaw County through acquisition of land for future park development, when appropriate and available, in areas of the County which are underserved.*

Seek opportunities to cooperate and collaborate with other public and private recreation providers, ensuring the development, operation and maintenance of parks and facilities is accomplished with the greatest cost efficiency.

- *Encourage greater participation by local municipalities in providing neighborhood and community scale recreation services and provide technical assistance to these groups.*



Draper-Houston Washtenaw County Preserve

Monroe

Acquire additional park facilities

- *Acquire or preserve linear parks and greenways for trails and conservation.*
- *Acquire woodlands, wetlands, and other natural areas for preservation.*
- *Encourage preservation of open space and natural areas through the purchase of development rights, conservation easements, and means other than outright acquisition.*

Trail and Pathway Initiatives

In 2006, the seven-county region of southeast Michigan developed an updated *Southeast Michigan Greenways Vision*, which reflects the desired non-motorized connections in the region. This initiative was facilitated by the Community Foundation for Southeast Michigan. Counties worked together with local municipalities and community interest groups to develop a long-term vision for a connected system of greenways and trails.

The Monroe and Washtenaw Counties Regional Trails and Greenways Vision was produced by holding several workshops to gather input. Figure 5 depicts the vision for the Milan area, identifying a regional framework for Milan which provides connections to adjacent communities. The major arteries identified for regional non-motorized improvements are Platt Road, Dexter/Carpenter Road, Mooreville/Main/Plank Road, and Milan/Oakville Road.

Figure 5. Regional Greenways Vision



Source: Greenways Collaborative, 2006

Locally, the City of Milan is exploring the possibility of a greenway network that would connect Nature Park to Wilson Park through trails, boardwalks, bridges, sidewalks, and a lakeside promenade. The proposed trail, which would incorporate universal design principles, would extend to Washtenaw County's Draper-Houston Meadow preserve to the west of the City. The greenway concept is detailed in Figure 6 on the next page.

Figure 6. Milan Greenway Concept Plan



Source: Stantec Consulting, 2011

Other Local Initiatives

In 2006, the Downtown Development Authority (DDA) developed in cooperation with the Parks and Recreation Commission and the Historical Commission, a *Downtown Development Plan*, which outlines several goals and strategies to improve the Milan's downtown. Notable goals include the development of a mixed-use farmers market, the provision of non-motorized connections to adjacent amenities, and the preservation and promotion of historic character. Several strategies to achieve these goals are outlined as follows:

Develop a mixed-use farmers market

- *Develop a permanent farmers market and public parking lot amenity along Main Street between Wabash and Park streets, behind the commercial buildings.*
- *Provide a through passage between Wabash and Park Street and include water access.*

Encourage non-motorized connections to adjacent amenities

- *Improve crosswalks and connections between downtown, the parks, and civic center.*
- *Include generous sidewalks, clearly marked crosswalks, attractive window displays, benches, open-air café seating, public art, landscaping, and appropriately scaled lighting.*

Preserve and promote historic character

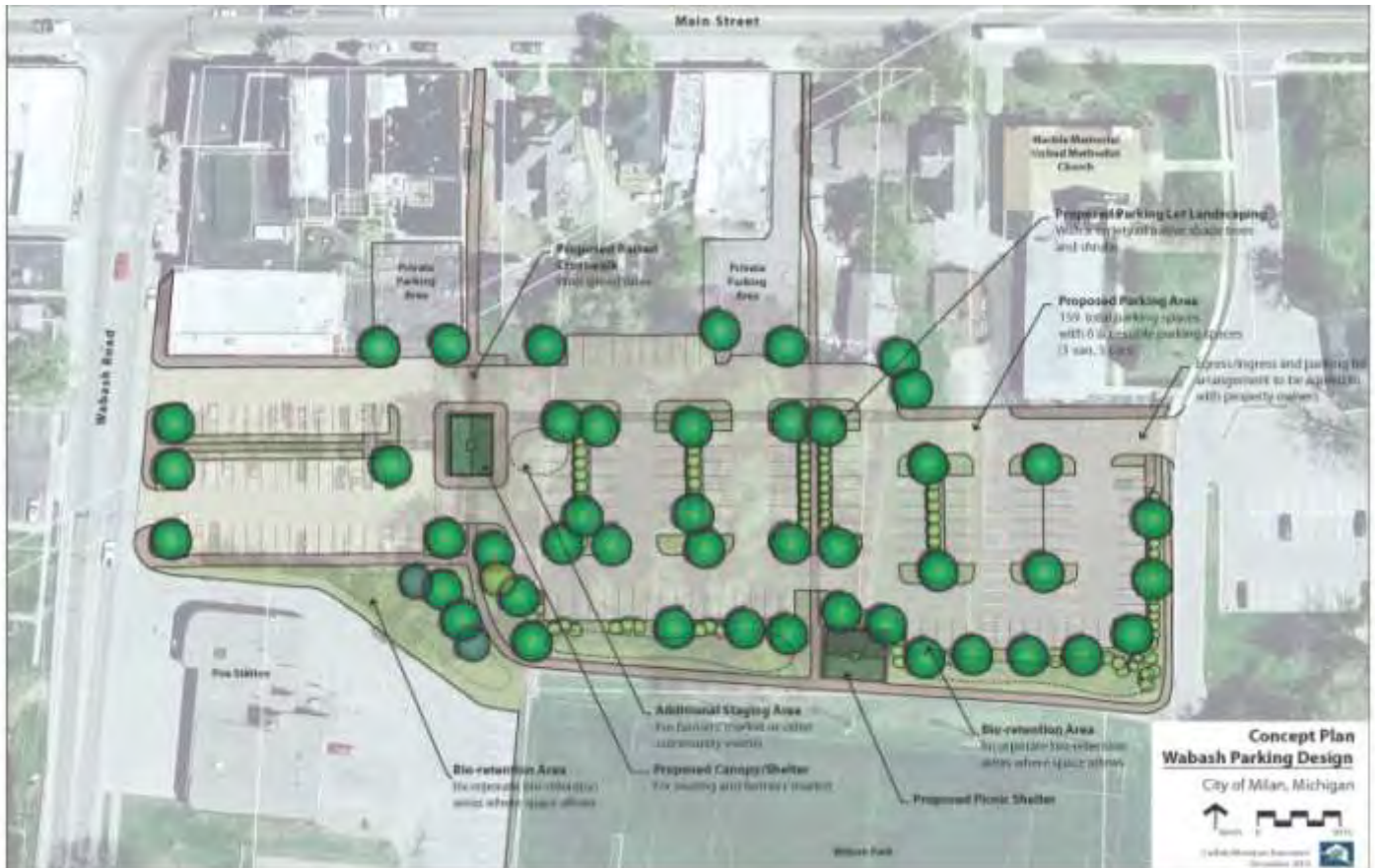
- *Educate the owners of downtown properties to the value of their historic properties.*
- *Develop a self-guided historic walking tour with the Milan Historical Society to promote Milan and educate residents and visitors.*



Art on Display in Downtown Milan

The DDA further developed in 2010 a parking lot redevelopment concept plan incorporating a farmers market north of Wilson Park, as illustrated below. This, however, has not been implemented yet.

Figure 8. Wabash Parking Lot Proposed Design



The Milan Parks and Recreation Commission is also currently sponsoring a project to build a large central pavilion in Wilson Park. This structure would serve a large range of uses such as concerts, civic events, outdoor weddings, family reunions, and more.



Wilson Park Proposed Pavilion

ADMINISTRATIVE STRUCTURE

Management and planning for parks and recreation in the City of Milan are primarily completed by the Parks and Recreation Department and the Parks and Recreation Commission. Figure 9 depicts the organizational structure of the City as it relates to parks and recreation.

Milan residents are represented by a seven member Parks and Recreation Commission which was formally established in 1972, under Michigan Public Act 156 of 1917. The primary responsibilities of this group of officials are to plan and recommend improvements to parks and recreation facilities, and to advise on the development of recreation programs.

Figure 9. City of Milan Organizational Chart



ADMINISTRATION

The Parks and Recreation Department is responsible for the day-to-day operations of the facilities and programs, including the planning, programming, and staffing of all programs and activities, oversight of maintenance, development of park facilities, and administration of the budget, record keeping, and information functions.

The Department is currently staffed by an interim director and 10 to 20 contracted instructors.

Maintenance activities are accomplished by the Department of Public Works and include litter control, park clean-up, athletic field maintenance, and other routine and periodic maintenance tasks.



Milan Senior and Community Activity Center

FUNDING AND BUDGET

Funding for parks and recreation in the City of Milan is generally supported by the City's General Fund, as well as user fees, donations, and grants. A budget summary showing activities related to parks and recreation in Milan from 2010 to 2013 is presented in Table 9.

Contractual services including contracts for maintenance of portable toilets, copy machine, lawn mowing account for the majority of departmental expenditures. Parks and recreation revenues come from program fees, league participation charges, and athletic field, and pavilion rentals.

Table 9. Budget Summary

	2010-2011	2011-2012	2012-2013
Expenses			
Maintenance			
Community House	\$2,134	\$2,331	\$1,000
Senior Center	\$16,671	\$2,378	\$10,000
Senior Citizen			
Salary & Benefits	\$2,321	\$1,990	\$2,669
Contractual Services (\$ to MSHL)	\$16,000	\$12,000	\$8,000
Permits	\$139	0	0
Printing & Publishing	0	2	\$250
Utilities (Senior Center)	\$20,827	\$17,343	\$23,069
Rental Deposit Refunds	\$5,150	\$1,600	\$4,000
Parks & Recreation			
Salary, Benefits & Compensation	\$57,703	\$56,895	\$66,975
Contractual Services	\$158,351	\$142,073	\$152,500
Supplies	\$8,059	\$13,611	\$16,000
Postage, Printing & Publishing	\$5,279	\$5,271	\$5,300
Utilities (Community House & Parks)	\$7,067	\$6,542	\$7,653
General Maintenance & Playground Safety Surface	\$10,269	\$34,413	\$10,000
Dues, Fees & MRPA tickets	\$5,599	\$5,851	\$6,300
Total	\$315,569	\$302,300	\$313,716
Revenues			
Recreation Fees & Tickets	\$63,084	\$48,730	\$31,500
Tackle Football	\$740	\$8,692	\$8,500
Community House Rental	\$350	\$0	\$0
Senior/Community Center Rental Income&Deposits	\$22,281	\$16,967	\$28,000
Park Pavilion Rental Income	\$1,019	\$800	\$750
Group Park User Fees	\$1,690	\$725	\$2,000
Total	\$89,164	\$75,914	\$70,750

VOLUNTEERS AND PARTNERSHIPS

Volunteers, service clubs, community groups, and private businesses play an active role in supporting parks and recreation in the City of Milan.

The Department has cultivated valuable relationships with community groups and organizations to offer a wide variety of programs, facilities, and activities. A relationship is maintained with the Milan Area Schools which has a community education program. In addition, the Department organizes and provides facilities for both youth little league and youth soccer programs, working with the Milan Youth Little League and the Milan Youth Soccer Club.

There are a number volunteers who assist with programs ranging from the senior lunch program to the Easter Egg Hunt. Service clubs and community groups also play a significant role in providing volunteer labor and financial support for the area's park facilities recreation programs. Some of the service clubs and community groups include:

Sports organizations:

- Milan Youth Soccer Club
- Milan Youth Little League

Local civic and service clubs:

- Moving Milan Forward
- Greater Milan Community Foundation
- Milan Rotary Club
- Milan Seniors for Healthy Aging
- Milan Garden Club
- Milan Historical Society
- Milan Community Fair
- Milan Area Chamber of Commerce

Fraternal organizations:

- Kiwanis Club
- Masonic Lodge
- American Legion Post 268
- Veterans of Foreign Wars Post

Scouting groups:

- Boy Scouts of America
- Girl Scouts
- Milan American Heritage Girls

Land conservancies and preservation groups:

- Saline River Greenway Alliance
- Legacy Land Conservancy
- Southeast Michigan Land Conservancy
-

PARKS & RECREATION RESOURCES

The City of Milan contains over 200 acres of park land as well as school and other community and recreational facilities. This section describes these recreational resources. The information provided in this section was derived from a variety of sources including documents and the web pages of the related agencies or organizations.

RECREATION FACILITIES

City Facilities

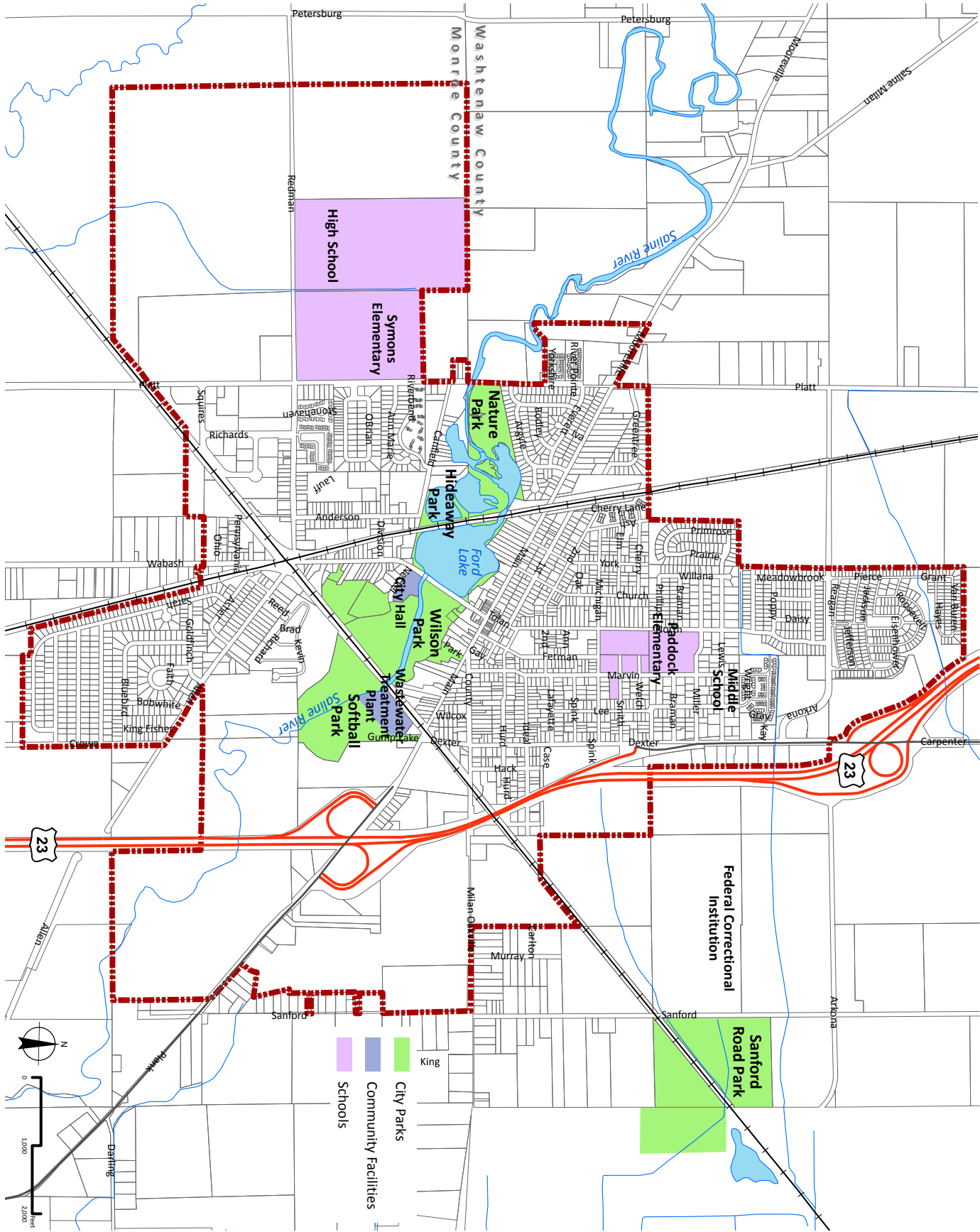
The City of Milan owns and operates five parks and a senior and community center. In addition, the City owns and operates the historic properties known as the Ford Village Industry buildings. Most of the parks are located along the Saline River, forming a greenway of open spaces and natural areas in the center of the City.



The Saline River in Wilson Park

A profile of each City park is provided on the following pages. Their location is illustrated in Figure 10 on the next page.

Figure 10. Parks and Community Facilities



Nature Park

Located on Platt Street, Nature Park contains 11.8 acres which extends east to the Ann Arbor Railroad. It contains a large area of wetlands along the Saline River adjacent to Ford Lake. Nature Park incorporates the following facilities:

- 1 softball field,
- 2 flag football fields,
- Several play structures and play equipment,
- Picnic pavilion with picnic tables and fireplace,
- Pond, wetland, and wooded areas,
- Walking paths,
- Gravel parking area,
- Portable restroom.



Nature Park Dinosaur Play Structure



Nature Park Picnic Shelter



Nature Park Ball Field



Nature Park Playground



Nature Park Playing Fields



Nature Park Pond

Ford Lake and Hideaway Park

The Ford Lake area is accessible from Wabash Street and includes approximately 14.4 acres of largely undeveloped park land which extends east to Nature Park. Part of this is known as the Hideaway Park property, located at the intersection of Canfield and Anderson streets. As a whole, the properties incorporate the following facilities:

- A walking path/promenade along Wabash Street,
- A small picnic area and benches on Wabash Street.



Ford Lake



Ford Lake Promenade



Ford Lake Dam



Hideaway Park Property



Pond by Hideaway Park Property

Wilson Park

Wilson Park is a 35.6-acre community park located on Wabash Street, south of Main Street and north of Neckel Court. Because of its central location adjacent to the municipal offices, the park is heavily used by City residents. It incorporates the following facilities:

- 1 lighted football/soccer field,
- 2 lighted basketball courts,
- Picnic shelter with tables and grills,
- Play structures,
- Sledding hill,
- Seasonal ice rink,
- Veteran's Wall of Honor,
- Walking/biking paths and 2 footbridges over the Saline River,
- Youth League complex with 4 little league baseball/softball fields, a T-Ball, bleachers and dugouts, a concession stand, and restroom facilities,
- The Milan Senior and Community Activity Center including the Parks and Recreation Department offices, indoor meeting/activity rooms, cafeteria, kitchen, and multi-purpose room,
- Parking areas, and
- Portable restrooms.



Wilson Park Playground



Wilson Park



Veteran's Wall of Honor at Wilson Park



Milan Senior and Community Activity Center



Youth Ball Fields at Wilson Park

Softball Park

Located on Gump Lake Road, just south of Main Street, this 9-acre property is also known as Gump Lake Park to local baseball and softball enthusiasts. It services the local adult softball league and local youth baseball teams. The park is accessible by both cars and pedestrians. A walk/bike way connects Softball Park to Wilson Park, along the Saline River. It incorporates the following facilities:

- 2 softball fields with bleachers,
- Walking/biking paths and footbridge over the Saline River,
- Gravel parking area,
- Gump Lake,
- Drinking fountain, and
- Portable restrooms.



Softball



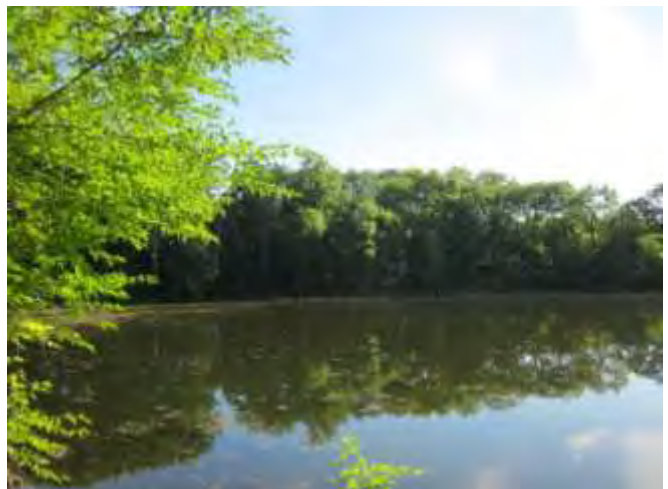
Softball Park Fields



Softball Park Parking area



Softball Park Fields



Gump Lake

Sanford Road Park

Located on Sanford Road and spanning both York and Augusta townships, between Arkona and Milan-Oakville roads outside of the current City development limits, Sanford Road Park is the City's largest park with 139.5 acres. The park is separated into three areas: an equestrian area on the north, soccer fields in the central portion, and a model airplane flying field used by the Milan Flyers to the south. It includes the following facilities:

- North Area:
 - Equestrian area, and
 - An old slaughter house and announcers box;
- Middle Area:
 - 5 soccer fields for different age groups,
 - Gravel parking areas, and
 - Portable restrooms;
- South Area:
 - Radio-controlled model airplane flying field,
 - Picnic pavilion, picnic tables, and grills, and
 - Walking paths.



Equestrian Area at Sanford Road Park



Equestrian Area at Sanford Road Park



Sanford Road Park Soccer Fields



Model Airplane Flying Field at Sanford Road Park

Historic Properties

The City of Milan is rich with history and has preserved many of its local landmarks. Historic properties that are owned and managed by the City include the Ford Village Industry Buildings.

The Ford Village Industries Buildings include the Community House, a former grist mill, the Annex or storage barn and the Power Plant that is now part of the City Hall. The Community House is used for community events such as the Library book sale, dance lessons and is available for rent. The Annex is used as a storage area by the Department of Public Works, and the Power Plant is part of the City Hall complex.

While these buildings are part of the Milan Civic Center, they are also part of the MotorCities Automobile National Heritage Area (Motor Cities ANHA), one of 24 National Heritage Areas in the country. A National Heritage Area is designated by Congress and becomes part of the National Park Service, the Federal agency responsible for preserving nationally significant natural and cultural resources for present and future generations. The MotorCities ANHA received its designation in 1998 in order to preserve the cultural and historic landscape associated with the automobile in Southeast and Central Michigan.



The Community House

School and Private Recreation Facilities

In addition to the City recreation facilities, there are school and private parks and recreation facilities located in the City of Milan. There are shown on Figure 10 and are briefly described as follows.

School Facilities

The Milan Community Schools operate four schools within the City of Milan. These school facilities play a major role in the provision of recreation opportunities in the City.

Milan Middle School, located on North Street, contains 22 acres of land together with Paddock Elementary and includes a multi-purpose field, running track, indoor swimming pool, fitness center, and two gymnasiums. Paddock Elementary also includes a play structure and other play equipment, a half basketball court, and an indoor gymnasium.

Symons Elementary, located on Platt Road, contains 17 acres of land with walking paths, play structures, and other play equipment.

Milan High School, adjacent to Symons Elementary, has access from both Redman and Platt roads. It includes 80 acres with a lighted football stadium including concession stand and running track, four baseball fields, one baseball stadium, one softball stadium, one softball field, three soccer fields, four tennis courts, and an indoor swimming pool, gymnasium, and performing arts center.

Private Facilities

There are a number of private facilities in and around Milan which include recreation amenities. While they do not provide public access, they are important in providing recreation opportunities. Some of these facilities are listed below.

- Meadowbrook Park, a private subdivision park located north of the City, includes a play structure for neighborhood use;
- Cabela's, located in the Village of Dundee, includes approximately 69 acres of land with a fishing pond, numerous walkways, and a wildlife refuge;
- Cleanwater Beach (formerly known as Heath Beach), a 53-acre old quarry in Milan Township, includes a pond popular for swimming;
- Dundee Pheasant Farm and Dog Training Preserve with over 900 acres of land includes tower hunts, grass hunts, and dog training in Dundee Township;



Meadowbrook Park



Heath Beach

- Dundee Sportsman's Club includes a shooting range on a 48-acre property in Dundee Township;
- Farmer J's Corn Maze is a 15-acre property in Dundee Township;
- The Free Methodist Church on Arkona road, incorporates a picnic area, pavilion, and open space;
- KC Campground, located on Sherman Road, is a 20-acre campground in London Township;



KC Campground

- London Sportsmen Rod and Gun Club is a 20-acre property in London Township;
- Milan Dragway is a race track with many other amenities located on a 136-acre property located on Plank Road in London Township;



Milan Dragway

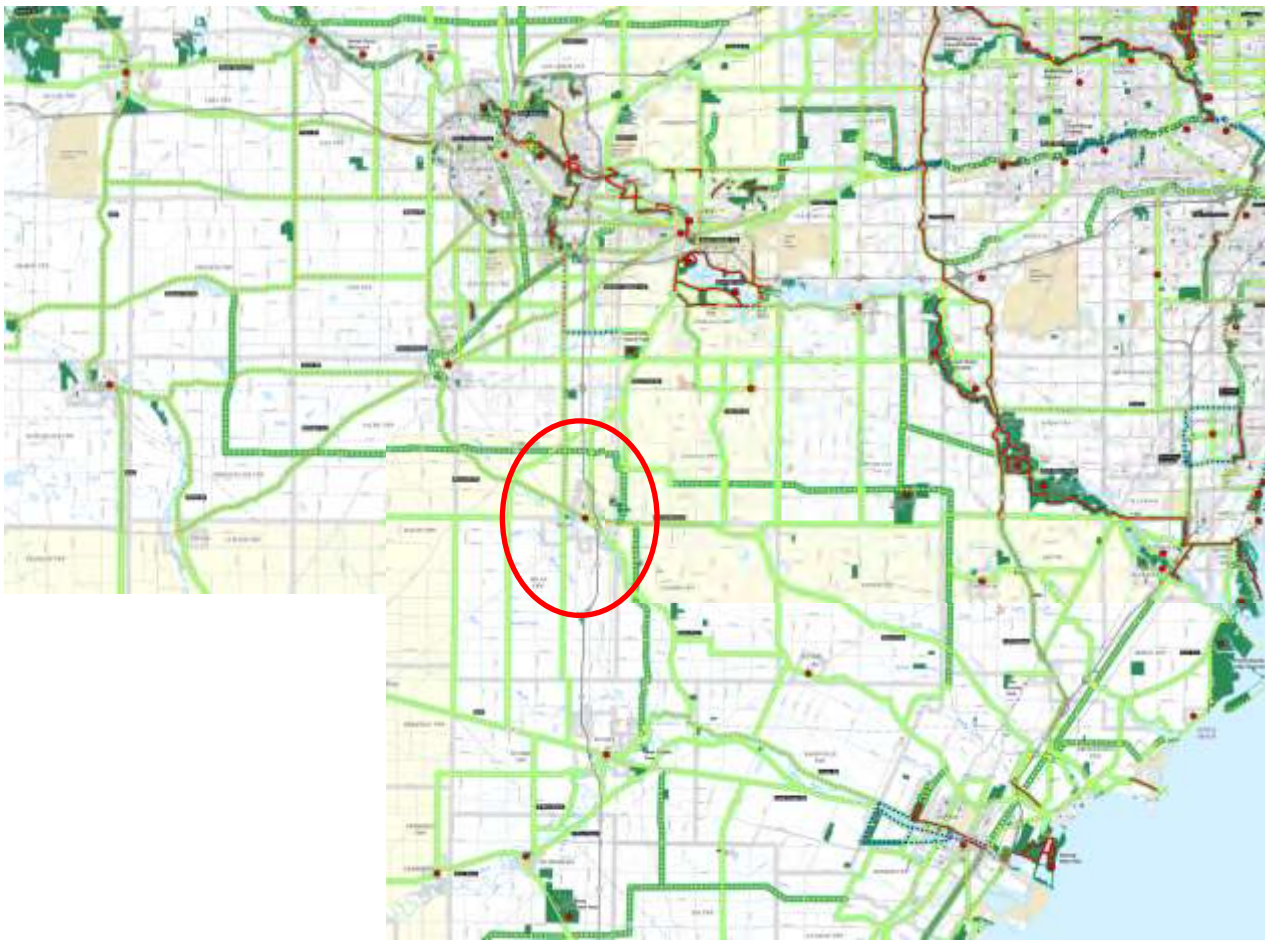
- Sexy Pheasant Hunting Preserve, is a 40-acre property located in Milan Township;
- Splash Universe Water Park, an indoor water park located in the Village of Dundee, includes a zero depth entry pool, lazy river, water slides, and a family spa; and
- Other commercial facilities located in the City of Milan include Dance Xplosion, SayYes Gym, Milan Tae Kwon Do, and Milan Preschool Coop.

Regional Recreational Resources

There are more than 47,000 acres of park land owned by the state of Michigan, the Huron-Clinton Metropolitan Authority, Washtenaw and Monroe counties around the City of Milan. These parks and preserves are considered regional recreational facilities.

These regional facilities incorporate large areas and provide recreation opportunities such as swimming, boating, hiking, hunting, camping, and golfing, which are typically beyond the ability of a local municipality to provide. Figure 11 depicts the location of some of the regional parks around Milan and Table 9 lists the recreational activities they offer. A detailed description of the parks and preserves located closest to the City of Milan follows.

Figure 11. Regional Recreation Facilities Around Milan



Source: Washtenaw, Monroe, and Wayne County Greenways Vision, 2006

Table 10. Regional Parks and Preserves

		State Recreation Areas							HCMA Metroparks							Washtenaw & Monroe County Parks & Preserves					
		Chelsea Game Area – 799 Ac.	Petersburg Game Area - 469 Ac.	Pinckney State Rec Area - 11,000 Ac.	Pointe Mouillee Game Area - 4,000 Ac.	Sterling State Park - 1,300 Ac.	W J Hayes State Park - 654 Ac.	Waterloo State Rec Area - 20,500 Ac.	Hudson Mills Metropark - 1,549 Ac.	Dexter Huron Metropark - 122 Ac.	Delhi Mills Metropark - 53 Ac.	Lower Huron Metropark - 1,258 Ac.	Willow Metropark - 1,531 Ac.	Oakwoods Metropark - 1,756 Ac.	Lake Erie Metropark - 1,607 Ac.	County Farm Park - 141 Ac.	Parker Mill County Park 45 Ac.	Rolling Hills County Park - 360 Ac.	Swift Run Dog Park- 10 Ac.	Draper-Houston Meadows Pres.- 96 Ac.	West County Park - 60 Ac.
Access	Parking Area	●	●	●	●	●	●	●	●	●	●	●	●	●	●	●	●	●	●	●	●
Passive	Picnicking			●		●	●	●	●	●	●	●	●	●	●	●	●	●			●
	Playground			●		●	●	●	●	●	●	●	●	●	●	●	●	●			●
Trails	Nature Trail	●	●	●					●	●		●	●		●	●	●	●	●	●	●
	Paved Trail					●			●			●	●	●		●	●	●			
	Bike Rental											●									
	Mountain Biking Trail				●			●										●			
	Equestrian Trail				●			●						●							
	Fitness Trail															●					
	Cross-country skiing				●			●	●			●	●		●			●			
	Snowmobiling				●			●													
Water Activities	Swimming Beach			●		●	●	●													
	Water Park/Features											●	●		●			●			
	Boat Launch	●		●		●	●	●	●						●						
	Boat Rental								●		●		●								
	Canoeing/Kayaking			●					●	●	●	●	●	●							
	Shore Fishing	●		●		●	●			●	●	●	●	●	●		●	●			●
	Pier/Dock Fishing			●		●	●				●			●	●						●
Winter & Seasonal Activities	Ice Fishing			●		●		●	●						●						
	Ice Skating							●				●									
	Sledding/Tobogganing												●		●		●				
	Hunting	●	●	●	●			●													
Interpretive Facilities	Nature Center							●						●	●						
	Nature/Wildlife Area	●	●	●	●	●	●	●	●	●	●	●	●	●	●	●	●	●		●	●
Court & Turf Games	Ball fields								●	●	●	●	●		●						
	Court Games			●				●	●		●	●	●		●			●			
	Disk Golf								●		●		●					●			
	Golf Course								●		●	●	●		●						
	Skatepark											●									
Misc.	Banquet/Event Facility								●		●							●			
	Indoor Rec Center															●					
	Community Garden															●					
	Horse Stable			●				●													
Camping	Rustic Campsite			●				●				●									
	Modern Campsite			●		●	●	●													
	Canoe Camping								●												
	Cabin/Yurt Rental			●			●	●									●				
	Group Camping							●	●			●									

Petersburg State Game Area

Petersburg State Game Area is located south of Petersburg about five miles south of Dundee in Summerfield Township. This 469-acre area includes a prairie ecosystem for migratory and residential wildlife and provides recreation opportunities for hunting, trapping, fishing, and wildlife viewing.

Walter J. Hayes State Park

Established in 1920, this state park, located in the Irish Hills, covers approximately 654 acres. The park features a campground with modern campsites and cabins in a scenic setting composed of wooded, rolling hills next to Wamplers Lake. Other features include sand beaches, shaded picnic areas, boat launch, concession stand, canoe, rowboat, tube and paddle boat rentals, horseshoe pits, volleyball, and playground.

Washtenaw County Farm

County Farm is located on the southwest corner of Washtenaw Avenue and Platt Road in Ann Arbor. It contains 141 acres with a community garden, a perennial garden, 2 picnic shelters, walking, jogging, nature trails, an 18 station exercise trail, and a nature area. The Meri Lou Murray recreation Center is located on Washtenaw Avenue within the County Farm Park in Ann Arbor. Indoor features include a wheelchair accessible swimming pool, gymnasium, cardio and strength training equipment, walk/run track, and locker rooms.

Washtenaw County Parker Mill

Parker Mill is a 26-acre wooded area that is part of the Washtenaw County Park system. It includes the mouth of the Fleming Creek where it joins the Huron River and is located in Ann Arbor Township. The historic Parker Grist Mill contains the original milling machinery left in the mill when the Parker family ceased operation in 1958. The park also contains the Hoyt G. Post Trail, a mile long handicap accessible boardwalk with provides access to natural areas along Fleming Creek and the Huron River.

Rolling Hills

Rolling Hills County Park is located on Stony Creek Road in Ypsilanti Township. It is the closest Washtenaw County Park to the City of Milan. It includes 360 acres featuring a water park with a wave pool, water slides, lazy river, spray grounds, activity pool, and sand play areas. The park also includes an 18-hole disc golf course, a pond with a handicapped accessible fishing pier, several picnic pavilions, playground, sand volleyball, horseshoe pits, and nature trails. In winter, the park has three miles of groomed cross-country ski trails and a sledding hill. Plans for the property include a miracle baseball field and other athletic fields, an adventure playground, a golf learning center, a dog park, a mountain bike technical course, an amphitheater, and a potential community center.



Washtenaw County Farm



Rolling Hills County Park



Swift Run Dog Park

Swift Run Dog Park

Swift Run Park is an off-leash dog park in the Swift Run landfill in the City of Ann Arbor. It is located at the corner of Ellsworth and Platt roads. The 10-acre park is maintained in partnership between Washtenaw County and the City of Ann Arbor with financial support from both entities.

Draper-Houston Meadows Preserve

Just west of the City of Milan, the Draper-Houston Meadows Preserve protects over one-half mile of Saline River shoreline. The preserve features high-quality floodplain forest, oak openings, and lakeplain prairie habitats. Habitat restoration efforts are planned for the property. In the southern portion of the property, the property include a mature woodlot and two creeks meandering through hedgerows on their way to the Saline River. The woods and hedgerows offer an attractive spring wildflower display. A small trail loop is currently in place north of the river, and access to the rest of the site is planned.



Draper-Houston Meadows Preserve

West County Park

Located southeast of Milan in Dundee Township, West County Park is a Monroe County Park which comprises 60 acres of park land along the River Raisin. The park includes a picnic shelter, other small shelters, prairie restoration and reforestation areas, and hiking trails.

RECREATION PROGRAMS

The City of Milan offers outstanding youth and adult team and individual sports opportunities and special events to City residents and non-residents. The programs listed below are offered by the City of Milan Parks and Recreation Department.

Special Events:

- Easter Egg Hunt
- Mom 2 Mom Sale
- Mommy and Me Magic Picnic
- Mummy & Me Halloween
- Grandma and Me Tea Party
- Concerts and Movies in the Park
- Safety Town
- Mother/Son Dance
- Daddy Daughter Dance



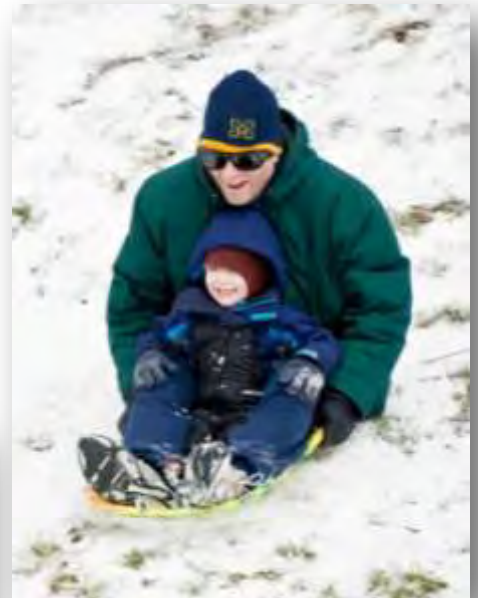
Concert in Wilson Park

Preschool Programs:

- Lets Camp Out
- Little Ninja Camp
- Dino Camp
- Messy Camp
- Storytime Fun
- Fire Safety
- Dinosaurs
- Finger Painting Party
- Hip Hop/Jazz
- Pre-Ballet Class

Youth Programs:

- Milan Junior Tackle Football
- Milan Storm Flag Football
- Youth Cheer/Dance Team
- Up Close to Magic Class
- Hip Hop/Leaps/Turns
- Little Miss Manners
- Hip Hop/Dance Team
- Tap
- Ballet
- Little Ninjas
- Kenpo Karate
- Musical Theatre Camp
- Summer Skills Math Fun



Sledding in Wilson Park



Mother/Son Dance

Adult Programs:

- Beginning Dog Obedience
- Zumba
- Private Voice or Guitar Lesson
- CPR, AED & First Aid Training
- Drop in Quilting Night
- Total Fitness
- Tai Chi
- Women Self Defense
- Getting Started with Genealogy Research
- Cupcake Craze

There are also other organizations providing recreation programs in Milan. They include the Milan Area Schools Community Education, the Milan Area Youth Soccer Club, and the Milan Youth Little League.



Festival in Wilson Park

ACCESSIBILITY ASSESSMENT & GRANT-ASSISTED PROJECTS

A critical component in planning for recreation facilities is providing access to accommodate the needs of all people, including those with disabilities. The ranking system suggested by the Michigan Department of Natural Resources Guidelines (MDNR, 2009) was used to evaluate the accessibility of the area parks. The ranking system ranges from 1 to 5 as follows:

1. None of the facilities meet accessibility guidelines,
2. Some of the facilities/park areas meet accessibility guidelines,
3. Most of the facilities/park areas meet accessibility guidelines,
4. The entire park meets accessibility guidelines, and
5. The entire park was developed/renovated using the principles of universal design.

Each of the developed parks was evaluated using the MDNR ranking system noted. The specific elements that were evaluated include parking, paths of travel from parking to activity areas, the activity areas themselves, and support facilities such as restrooms and surfacing. Table 11 presents the results of this evaluation.

Table 11. Accessibility Assessment

Park	Rank	Description
Nature Park	3	Most of the park complies with ADA standards, however, accessible parking spots should be added with proper signage in the parking lot
Ford Lake Area	4	The recent development of a walkway with picnic table/area complies with ADA standards
Wilson Park	2	Accessible routes should be provided to some of the park's activity areas such as the playgrounds and some of the youth softball fields as well as accessible parking spots in the parking areas off of Wabash and Neckel Court
Softball Park	1	Accessible parking spots should be added with proper signage in the parking lot as well as accessible routes to the bleacher/activity areas
Sanford Road Park	2	Accessible parking spots are provided but accessible routes to the activity areas are needed

All new park construction projects in the City of Milan are designed to meet or exceed the most recent requirements of the ADA while existing facilities will be brought into compliance as repair and update work are carried out.

The City of Milan has been awarded six MDNR grants between 1973 and 1990. Grant funding from the Land and Water Conservation Fund and the Recreation Bond fund has been instrumental in developing recreation facilities for Milan residents. Table 12 presents a description of all MDNR grants received including the current use and condition of the grant-assisted park facilities.

Table 12. MDNR Grant Assisted Projects

Grant Number	Description	Grant Amount	Scope and Current Use/condition
26-00396 1973 LWCF	Milan Up-River Development (currently Nature Park)	\$44,257	Development of a ball diamond, playground equipment, picnic area, parking, road, and picnic shelter. Most of the original facilities still exist and are maintained in good condition except for the playground equipment which has been replaced to meet ADA and safety standards.
26-00874 1977 LWCF	Milan Middle School Playfield (currently Symons Elementary)	\$20,910	Development of 2 tennis courts and softball field with bleachers. The facilities had reached their life expectancy and the area has since been redeveloped by the Milan Area Schools.
26-01104 T 1980 LWCF	Softball Park	\$38,543	Development of 2 softball fields with fencing, storm sewer, water service, and parking lot. The facilities are well-cared for and used by the community.
26-01434 1985 LWCF	Wilson Park	\$27,610	River bank stabilization, development of boulder rapids, pathways, and signs. The facilities are well-cared for and used by the community.
BF89-659 1989 BF	Wilson Park Phase II	\$74,250	Installation of two pedestrian footbridges and approaching walkways, riverbank stabilization, lighting, and signage. The facilities are well-cared for and used by the community.
BF90-304 1990 BF	Wilson Park Phase III	\$30,000	Development of a bike path/ walkway connecting Wilson Park with Softball Park with railing for existing Softball Park bridge. The facilities are well-cared for and used by the community.

BF: Recreation Bond Fund

LWCF: Land and Water Conservation Fund

PUBLIC PARTICIPATION AND NEEDS ASSESSMENT

An essential task in the recreation planning process is to determine the needs and desires of the community as a basis for an action plan to improve or develop a community's parks system. Needs and desires provide the rationale for the formulation of goals and objectives that lead to an action plan. To assess needs and desires, consideration was given to current recreation trends and input from community stakeholders, public officials, staff, and the residents of Milan.

NATIONAL, STATE, & REGIONAL RECREATION TRENDS

Recreation trends on a national level, in Michigan, and regionally, provide insight into activities that show the greatest growth in popularity and therefore may affect the future direction of parks and recreation. The National Sporting Goods Association (NSGA) regularly conducts national surveys to measure participation in physical activities and track changes from previous years. Table 13 lists the top seven outdoor activities persons seven years and older participated in at least once in 2010.

Table 13. National Sports Participation, 2010

Activity	Participation
Exercise walking	95.8 million
Swimming	51.9 million
Camping	44.7 million
Bicycle riding	39.8 million
Hiking	37.7 million
Fishing	33.8 million

Source: National Sporting Goods Association

The top growing outdoor activities between 1999 and 2009 were:

- Exercise walking (increased from 86.3 to 95.8 million),
- Running/jogging (increased from 22.8 to 35.5 million), and
- Hiking (increased from 24.3 to 37.7 million).

These trends are consistent with trends observed in Michigan. According to a telephone survey of Michigan residents conducted as part of the *2013-2018 Michigan Comprehensive Outdoor Recreation Plan*, the top outdoor recreation activities are: biking, camping, fishing, walking outdoor (including dog walking), hiking, outdoor games and sports, hunting and trapping, swimming, boating, and visiting a playground.

These trends are also consistent with trends observed in Monroe County. Monroe County surveyed residents as part of its recent 2013 County Recreation Plan update and found that the top county recreational facilities and activities desired by respondents include nature preserves with forests, wildlife, hiking trails, bicycle trails, walking paths, and greenways.

Monitoring parks and recreation trends is important in determining how parks and recreation services should evolve. The implication of the trends noted above along with the demographic and physical characteristics of Milan can be summarized as follows:

- Recreation facilities and programs should respond to the expected increase of seniors.
- There is a need for more pathways to accommodate bicycle and pedestrian recreation use and to contribute to a healthy and walkable community. The City of Milan has been forward-thinking with the concept of a greenway along the Saline River and this is an important project to realize.
- Ford Lake and the Saline River are unique and important natural assets for Milan. Encouraging their use for recreation, while maintaining their ecological functions, is a priority for the community.



Ford Lake Dam

PARK ACREAGE COMPARISON

The National Recreation and Park Association (NRPA) recommends a minimum amount of park land to adequately serve a given population. The purpose of the NRPA guidelines is to provide minimum park land standards that are applicable nationwide for recreation planning purposes. While the NRPA standards are useful benchmarks addressing minimum park acreage, a parks and recreation system should be tailored to meet the needs of the community.

According to the NRPA, parks are categorized as mini-parks, neighborhood parks, community parks, and regional parks. The mini, neighborhood, and community parks are the close-to-home parks, designed to satisfy the recreational needs of local communities. In Milan, all the City parks are considered close-to-home parks. According to NRPA standards, the suggested amount of close-to-home park land is 6.25 to 10.5 acres for every 1,000 residents.

Regional parks serve a broader area and focus on meeting the recreation needs of the region as well as preserving unique areas. For City of Milan residents, regional parks include the state, HCMA, and county-owned recreation resources described in the preceding chapter. The NRPA also recognizes other types of parks such as school properties, which can contribute to the local parks and recreation system.

Table 14 presents a comparison of the NRPA suggested park land standards with existing area parks based on an estimated population of 5,907 for 2012. According to these standards, the City of Milan meets and exceeds the minimum standards for *close-to-home* park land. While not for public use, the school grounds and private parks add some recreation amenities to Milan parks and recreation system. Milan is also well-served with regional parks located within an hour's drive of the City.

Table 14. Comparison to Suggested Park land Acreage Standards

Type of Park	NRPA Standard Acres/ 1000 Population	NRPA Standard Applied*	Existing
Close-to-Home Park land	6. 25 - 10. 5 Acres	37 - 63 Acres	210 Acres
Regional Parks	15 - 20 Acres	87 - 119 Acres	47,000 Acres+

*Based on 2012 population estimate of 5,907 persons

PUBLIC INPUT

Community stakeholders and residents were invited to a public input meeting which was held on August 19, 2013 at the City of Milan Senior and Community Activity Center. The event was advertised in the local paper, flyers were distributed and posted at numerous locations in the City, a notice was posted on the City's website, and invitations were mailed to City officials as well as community stakeholders.

Following an introductory presentation which included a description of the planning process, attendees were asked to provide suggestions related to park improvement and development. Table 15 provides a summary of the comments and suggestions received. A list of all the comments collected is attached in appendix to this report.

Table 15. Summary of Comments

Comments
Develop a network of non-motorized connections throughout the City, connecting neighborhoods to downtown, parks, and historic sites
Add bike lanes/trails in the City
Improve downtown and neighborhood connections
Implement the Milan Greenway Project
Connect Nature Park with proposed Milan Greenway
Purchase additional property along Ford Lake
Acquire land along the Saline River as necessary to implement the Milan Greenway project
Add neighborhood park on City water tower site
Improve Community House and Annex buildings and seek additional use
Improve signage in all parks
Improve park security
Nature Park
Develop trail/path connections to downtown from Nature Park
Install boardwalks and scenic overlook by ponds
Provide nature trails and interpretive signage
Improve/resurface parking lot
Add permanent restroom
Ford Lake
Dredge Ford Lake
Provide canoe/boat access/launch to Lake and River
Add picnic area along the Lake promenade



Public Meeting Flyer

Purchase three south side properties between railroad and Wabash to develop potential canoe/kayak launch and fishing access
Improve Hideaway Park with picnic area and playground
Wilson Park
Add permanent restrooms in north area
Develop a dog park on the east side of Wilson Park, north of the River
Develop a walkway on North Shore from Wabash St. to a future dog park or the east side of the Park
Repair/replace lights in playing field
Install batting cages—youth leagues—and improve parking
Install proposed Wilson Park pavilion
Develop gathering community event space such as a Farmers Market
Upgrade picnic facilities
Add skate park
Softball Park
Add lights and scoreboards
Add permanent restroom facilities, concession and storage
Improve parking area and protect Gump Lake
Develop picnic area and playground
Consider developing a pedestrian entry from Allen Road, formalizing the current trail access
Sanford Park
Develop driving tees/range on the property north of soccer fields
Provide control fencing along parking lot
Improve parking lot
Consider putting up barriers to close Park in Winter to prevent damage to area
Develop a dog park as an alternative
Refurbish tennis courts
Add permanent restrooms at soccer complex
Add picnic area and playground near soccer complex
Work with equestrian and model air field users to maintain/fund future improvements to these areas
Develop non-motorized trails/bike trails

PUBLIC REVIEW AND PUBLIC HEARING

After the Parks and Recreation Commission members considered the input received and reviewed the recreation trends, deficiencies, and other background information, they established the goals, objectives, and an action program for the implementation of this plan. This was done at public meetings held September 16 and October 21, 2013.

A draft plan was prepared which was made available for public review beginning on October 31, 2013. Copies were placed at City Hall, the Senior and Community Activity Center, the Police Department, the Milan Library, and the plan was posted on the City's website. The plan's availability for public review was posted at City Hall and in the Milan News Leader (page x). Following the 30-day public review, the Parks and Recreation Commission approved the plan and recommended adoption of the plan by City Council at a meeting held on _____ (page x). The public input into the plan culminated in an advertised public hearing held on _____ (pages x and x). After the hearing, the City Council adopted the plan (page x).

GOALS AND OBJECTIVES

The City of Milan Parks and Recreation Commission has formulated goals and objectives for the next five years. They are broad enough to encompass the suggestions expressed from the public, City officials, and staff. They also consider demographic changes, the area's physical resources, and current recreation trends.

GOALS

The City of Milan should provide outdoor recreational opportunities for persons of all ages and abilities.

The City of Milan should provide clean, safe, and healthy environments for outdoor recreation.

The City of Milan should consider the future needs of the community and take actions to dedicate park land in order to meet current and future recreation needs as well as to preserve critical environmental areas and enhance the character of the community.

OBJECTIVES

1. Continue to maintain and improve existing park facilities

It is a priority of the Parks and Recreation Department to continue to maintain and improve existing park facilities to a high quality standard. This entails ensuring park facilities and equipment are clean, safe, functional, and well-maintained.

More specifically, it includes replacing and upgrading aging park equipment and furnishings, ensuring safety surfaces under playground equipment meet regulated depth and fall zones, removing barriers to meet ADA accessibility standards, maintaining and refurbishing parking and pavement surfaces, athletic field and equipment care, and general park upkeep and stewardship. This also includes developing new recreation facilities in response to the changing needs of City residents within existing parks.

2. Establish important linkages and a continuous walk/bike way system

With the planned Milan Greenway project, there is a strong need and desire for a City-wide non-motorized transportation system that connects parks, natural areas along the Saline River and Ford Lake, community facilities, downtown businesses, and neighborhoods. The establishment of an interconnected, multi-modal, easily accessible, and safe walk/bike way system is recognized as a priority for Milan.

Coordination with City Council, Planning Commission, the Downtown Development Authority, and other groups will be necessary to realize a City-wide system.

3. Acquire and dedicate new park land

Potential park land acquisition should continue to focus on waterfront properties providing access to Ford Lake and the Saline River, on land adjacent to existing parks, and on land presenting walk/bike way development and linkage opportunities.

Dedicating open space, walk/bike ways, and close-to-home parks in new residential development should be encouraged and promoted. Desired recreation facilities may include a variety of recreation activities such as walking, bicycling, picnicking, and playground. Current City-owned properties could be developed to offer some of these amenities.

Future land acquisition should focus on preserving environmentally sensitive land associated with the Saline River greenway and also on tying these areas together to form a continuous greenway system. Coordination with City Council, Planning Commission, and the Downtown Development Authority will be necessary to acquire land for the development of parks and walk/bike ways.

4. Continue to offer outstanding parks and recreation services that enrich and engage the community

The City of Milan Parks and Recreation Department strives to provide exceptional services that are financially sustainable and respond to residents' desires and interests. Demographic and recreation trends indicate an increase in the number of active mature adults as well as an increase in the popularity of fitness and wellness-related activities. Continued partnerships with the various area public and private recreation providers including the county, adjacent townships, schools, sport organizations, and others are desirable to get the most out of the area's recreation potential.

Increased awareness of the City parks and recreation services through enhanced marketing may be important to promote the value and benefits of parks and recreation to Milan area residents.

5. Provide for the efficient administration of parks and recreation services

A quality park, recreation, and open space system is dependent on the prudent use of available funds. A means of generating revenues through grants, sponsorships, donations, or user fees should continue to be a priority to provide capital improvement projects and park land development in the City of Milan.

ACTION PROGRAM

The action program details the manner in which the goals and objectives will be met. It includes a list of specific projects to be accomplished over the next five years, as well as a suggested project schedule focusing on capital improvement projects, and strategies for implementation. These actions are generally grouped by park or facility and address the goals and objectives.

ACTION PLAN

The following outlines the specific projects and actions which are recommended to be accomplished during the planning period. Illustrations showing the proposed park improvements and actions are also included to depict the location of the proposed actions.

1. Maintain and upgrade existing park facilities (all parks)

This action includes replacing or repairing old equipment and facilities which are in a state of disrepair, are outdated, or dangerous. It also includes improving the appearance of the City parks through appropriate landscaping and maintenance. All upgrades must meet safety and accessibility standards. Proposed actions include:

- Repair and improve park signs;
- Improve security at all parks by enhancing visibility through vegetation management, and adding, if feasible, lights, security cameras, and phones;
- Remove/replace outdated play equipments;
- Maintain safety surfaces under play structures to regulated depth and fall zone;
- Refurbish athletic field surfaces as needed;
- Refurbish parking areas, walkways, and court game pavement surfaces as needed;
- Add dog waste bag dispensers and control Canada Geese population;
- Replace/add park furnishings such as benches, trash receptacles, and signs;
- Maintain buildings, structures, and picnic shelters in good condition with roof repair, exterior painting, and other;
- Manage existing vegetation with removal of invasive non-native plant species and dead trees and replace with native tree/shrub plantings; and
- Work with the Downtown Development Authority, Beautification Commission, and other civic groups to continue to add attractive landscaping by park signs, park entries, and other locations.

2. Maintain and improve Nature Park

As a unique community park with environmentally sensitive wetlands and nature areas, Nature Park is important for future enhancement. Proposed improvements include:

- Develop nature trails with boardwalks, scenic overlook, and interpretive signage in the park's wetlands, river, and lakes;
- Develop walk/bike connection to Hideaway Park and eventually to Wilson Park;
- Develop non-motorized connections with appropriate crosswalks and other "complete streets" infrastructures to connect to Platt Road greenway and to Washtenaw County's Draper-Houston Meadows Preserve;
- Improve parking area surface and implement storm water run-off control measures; and
- Add permanent restrooms.

Figure 12. Nature Park Development Plan



3. Improve Hideaway Park and the Ford Lake Area

While still undeveloped, this area is key in the desire to establish a continuous walk/bike way system connecting parks and community facilities. Proposed improvements to this area include:

- Develop a picnic area and playground at Hideaway Park (Figure 13);
- Dredge Ford Lake as needed;
- Purchase additional property along Ford Lake to allow development of a continuous walk/bike way around the lake;
- Establish canoe/kayak boat launch on Ford Lake and the Saline River; and
- Develop fishing pier on both water features.

Figure 13. Concept Plan for Hideaway Park



Source: Rodney Hill

Figure 14. Hideaway Park and Ford Lake Development Plan



4. Maintain and improve Wilson Park

As the primary site of community events and community facilities, Wilson Park is also essential for future upgrades. Proposed improvements include:

- Build the planned picnic pavilion and upgrade the old shelter;
- Support the Downtown Development Authority's re-development of the parking area north of the park;
- Improve and open up the entrances to the park, from both Wabash and Main streets;
- Establish a dog park on the east side of the property north of the River;
- Develop additional accessible walk/bike ways in the park to connect to activity areas;
- Add permanent restroom facilities;
- Replace lights on athletic field;
- Add lighting along walk/bike ways and electric power to some activity areas; and
- Support and improve Youth League facilities with parking lot improvements and batting cage development.

Figure 15. Wilson Park Development Plan



5. Maintain and improve Softball Park

Proposed improvements to Softball Park include:

- Improve parking area surface and implement storm water run-off control measures;
- Improve safety along path connection to Wilson Park;
- Provide accessible walk/bike ways to fields and other park activity areas;
- Develop a picnic area/shelter and playground;
- Establish trails in natural area of the park with Gump Lake access;
- Consider adding a walk/bike way to Allen Road to complete the Saline River greenway;
- Add permanent restroom facilities, concession, and storage;
- Support softball field improvement with added lights and scoreboards; and
- Consider developing additional park amenities in undeveloped areas.

Figure 16. Softball Park Development Plan



6. Maintain and improve Sanford Road Park

Proposed improvements to Sanford Road Park include:

- Improve parking area surfaces, add split rail or other type of fencing along parking edge, and implement storm water run-off control measures;
- Add walk/bike ways throughout the park;
- Install entry gates to close park during winter months and prevent misuse of the property;
- Develop picnic area/shelter, playground, and permanent restrooms near soccer complex;
- Consider adding a dog park on the property;
- Consider adding driving tees on portion of the northern property to accommodate users and prevent misuse of soccer fields; and
- Work with equestrian and model air field users to maintain and improve these special use facilities.

Figure 17. Sanford Road Park Development Plan

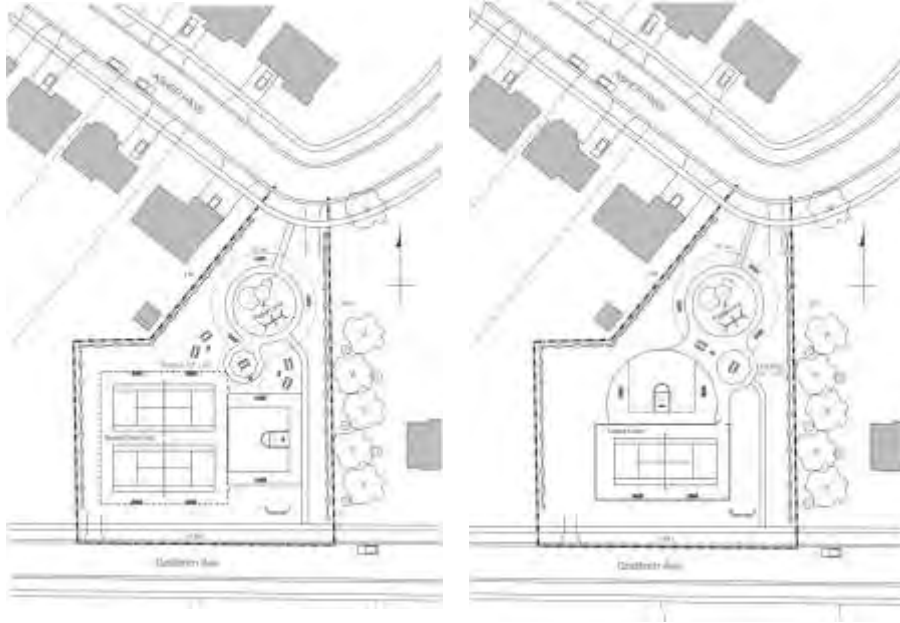


7. Other Improvements

Other proposed improvements include:

- Install a play structure in the Eagle Springs subdivision with pathway connections to Asher Pass and Goldfinch Lane (Figure 18);
- Consider developing other park amenities in this park; and
- Continue to explore developing a skate park and other park facilities in City parks that respond to resident needs.

Figure 18. Eagle Springs Subdivision Park Concept Plans



Source: Rodney Hill

8. Implement a City-wide continuous walk/bike way system

There is a strong need for the development of walk/bike ways in the City. Priority should be placed on the development of the planned greenway from Nature Park to Wilson Park as well as other improvements such as crosswalk enhancement and possible bike lanes through town. Proposed actions include:

- Develop a City non-motorized plan which would identify priority segments for development, establish an implementation program, and identify funding strategies;
- Work with City Council and Planning Commission in the review of development proposals to ensure walk/bike ways are built in conjunction with new developments;
- Install pedestrian and bicycle amenities including benches, trash receptacle, bike racks, mile markers, pet waste bag dispensers, and warning/directional signs along walk/bike ways; and
- Establish a marketing strategy for the walk/bike way system to attract support and sponsors including the development and refinement of a brochure and map.

9. Acquire and develop future park land

Proposed actions regarding new park land acquisition include:

- Consider park land acquisition along Ford Lake and the Saline River, adjacent to existing parks, and land providing linkages and opportunities for walk/bike way development; and
- Work with City Council and the Planning Commission to ensure park land and open space dedication is considered in future development projects.

10. Collaborate and coordinate with other area parks and recreation providers and provide for the efficient administration parks and recreation services

- Coordinate with Milan Area schools, the Saline River Greenway Alliance, the Milan Youth Soccer Club, the Milan Youth Little League, and any other organizations or clubs to provide programs;
- Complete the “Promoting Active Communities” assessment (see mihealthtools.org) to gain a greater understanding of the parks and recreation issues and to generate ideas, interest, and support for Milan’s parks and recreation;
- Continue to actively seek sources of funding for park and trail development through public and private grants, donations, and other fundraising activities;
- Communicate information regarding Milan’s recreation facilities and the Parks and Recreation Master Plan to Milan residents through the City's website and other means; and
- Advocate the goals and objectives adopted in the current Parks and Recreation Master Plan to City Council, Planning Commission, the Downtown Development Authority, and the Beautification Committee to ensure parks, walk/bike ways, and recreation needs are considered in the City's planning initiatives.



Ford Lake Promenade

PROJECT SCHEDULE

Table 16 lists individual capital improvement projects along with the specific tasks to be accomplished, the project objective reference, a cost estimate, and potential funding sources. In addition, a time frame for completion has been assigned. Short-term projects (ST) are recommended for completion within one to two years, medium-term (MT) within two to five years while long-term projects (LT) may take longer to complete, within five to six years. There are also tasks that are on-going (OG). Costs are for budgetary purposes only. Further investigations may be necessary to determine engineers probable cost opinions.

Table 16. Project Schedule

Project/Tasks	Obj.	Cost Estimate	Funding source	Time Frame
Nature Park				
Repair/replace picnic shelter roof	1	Tbd	Local Funds	ST
Add pet waste bag dispensers and replace park furnishings as needed	1	\$3,000	Local Funds	OG
Establish walk/bike way connection to Hideaway Park and Wilson Park	1-2	\$980,000	Local Funds, Grants, & Donations	ST
Paint crosswalk marking on Platt Rd for connection to Draper-Houston Preserve and add walk/bike way connection from Platt Rd to the park activity areas	2	Tbd	Local Funds, Grants, & Donations	ST
Develop additional nature trails with boardwalk, scenic overlook, and interpretive signage	1	\$5,000	Local Funds, Grants, & Donations	ST
Improve parking area surface, add ADA compliant parking spaces, and establish best storm water management practices	1	Tbd	Local Funds, Grants, & Donations	MT
Remove invasive non-native plants, prune dead trees or tree limbs, trim vegetation to maintain appropriate clearance and visibility, and replace trees/shrubs	1	\$2,000/yr	Local Funds, Grants, & Volunteer Effort	OG
Add permanent restrooms	1	\$50,000 - \$100,000	Local Funds	LT
Hideaway Park				
Develop a picnic area/shelter and playground	1	\$30,000 - \$40,000	Local Funds, Grants, & Donations	ST
Develop a fishing pier	1	\$20,000	Local Funds, Grants, & Donations	MT
Establish a canoe/kayak boat launch	1	\$10,000	Local Funds, Grants, & Donations	MT

Project/Tasks	Obj.	Cost Estimate	Funding source	Time Frame
Ford Lake Area				
Dredge Ford Lake as needed	1	Tbd	Local Funds, Grants, & Donations	OG
Establish a canoe/kayak boat launch	1	\$10,000	Local Funds, Grants, & Donations	MT
Remove invasive non-native plants, prune dead trees or tree limbs, trim vegetation to maintain appropriate clearance and visibility, and replace trees/shrubs	1	\$2,000/yr	Local Funds, Grants, & Volunteer Effort	OG
Wilson Park				
Continue fund raising and construct the planned picnic pavilion	1	-	Local Funds & Donations	OG
Support DDA's plan for the redevelopment of the parking area north of the park	1	-	Local Funds, Grants, & Donations	OG
Add additional walk/bike ways within the park	1	Tbd	Local Funds, Grants, & Donations	MT
Install lighting along walk/bike ways and add electric power to some activity areas	1	Tbd	Local Funds, Grants, & Donations	ST
Improve pedestrian entrances from Wabash St and Main St	1	\$5,000	Local Funds, Grants, & Donations	ST
Upgrade picnic shelter	1	Tbd	Local Funds	ST
Add pet waste bag dispensers and replace park furnishings as needed	1	\$2,000	Local Funds, Grants, & Donations	OG
Control Canada Geese population	1	Tbd	Local Funds & Grants	ST
Establish a dog park on the east side of the park	1	\$5,000 - \$30,000	Local Funds, Grants, & Donations	MT
Replace lights on playing field	1	Tbd	Local Funds, Grants, & Donations	LT
Add permanent restrooms	1	\$50,000 - \$100,000	Local Funds, Grants, & Donations	LT
Remove invasive non-native plants, prune dead trees or tree limbs, trim vegetation to maintain appropriate clearance and visibility, and replace trees/shrubs	1	\$2,000/yr	Local Funds, Grants, & Volunteer Effort	OG

Project/Tasks	Obj.	Cost Estimate	Funding source	Time Frame
Consider developing new park amenities in undeveloped portions of the park	1	Tbd	Local Funds, Grants, & Donations	LT
Support and improve Youth League facilities with parking lot improvements and batting cage development	1	Tbd	Local Funds, Grants, & Donations	MT
Improve Community House and Annex buildings and seek additional use	1	Tbd	Local Funds, Grants, & Donations	LT
Continue to maintain and improve the Milan Senior and Activity Center with needed repairs	1	Tbd	Local Funds, Grants, & Donations	OG
Softball Park				
Improve visibility/safety along walk/bike way connection to Wilson Park	1-2	\$2,000	Local Funds, Grants, & Donations	ST
Improve parking area surface, add ADA compliant parking spaces, and establish best storm water management practices	1	Tbd	Local Funds, Grants, & Donations	MT
Develop a picnic area/shelter and playground	1	\$30,000 - \$40,000	Local Funds, Grants, & Donations	MT
Provide accessible paths to park activity areas	1	\$5,000	Local Funds, Grants, & Donations	ST
Formalize walk/bike way connection to residential area to the southwest	1-2	Tbd	Local Funds, Grants, & Donations	MT
Consider extending the Milan greenway path along the Saline River to Allen Rd	1-2 -3	Tbd	Local Funds, Grants, & Donations	LT
Establish trails in natural area such as around Gump Lake	1	Tbd	Local Funds, Grants, & Donations	MT
Add permanent restrooms	1	\$50,000 - \$100,000	Local Funds, Grants, & Donations	LT
Support softball field improvements with added lights, scoreboards, and concession building with storage	1	Tbd	Local Funds, Grants, & Donations	OG
Consider developing new park amenities in undeveloped portions of the park	1	Tbd	Local Funds, Grants, & Donations	LT
Remove invasive non-native plants, prune dead trees or tree limbs, trim vegetation to maintain appropriate clearance and visibility, and replace trees/shrubs	1	Tbd	Local Funds, Grants, & Volunteer Effort	ST

Project/Tasks	Obj.	Cost Estimate	Funding source	Time Frame
Sanford Road Park				
Improve parking area surface, add ADA compliant parking spaces, and establish best storm water management practices	1	Tbd	Local Funds, Grants, & Donations	MT
Install split-rail fence along parking area edges and gates at park entries	1	\$40,000	Local Funds, Grants, & Donations	ST
Develop picnic area/shelter, playground, and permanent restrooms near soccer complex	1	\$100,000-\$150,000	Local Funds, Grants, & Donations	LT
Add walk/bike ways throughout the park and accessible walk/bike ways to the park activity areas	1	Tbd	Local Funds, Grants, & Donations	LT
Consider adding a dog park on the property	1	\$20,000 - \$40,000	Local Funds, Grants, & Donations	LT
Work with equestrian and model air field users to maintain and improve these special use facilities	1	Tbd	Local Funds, Grants, & Donations	OG
Other Improvements				
Install play structure with walk/bike way connections to Asher Pass and Goldfinch Lane	1	\$30,000	Local Funds, Grants, & Donations	ST
Citywide Continuous Walk/bike way System				
Work with City Council and Planning Commission to develop a City Non-motorized or Complete Streets Plan	2	-	Local Funds, Grants, & Donations	OG
Install site amenities along walk/bike way system including benches, trash receptacles, bike racks, mile markers, and signage	2	\$5,000	Local Funds, Grants, & Donations	LT
Develop a marketing strategy to attract support and sponsors including the development of a walking brochure and club	2	\$2,000	Local Funds, Grants, & Donations	LT
Land Acquisition				
Explore park land acquisition along Saline River and Ford Lake area as well as adjacent to existing parks	3	Tbd	Local Funds, Grants, & Donations	OG

Tbd: To be determined

IMPLEMENTATION STRATEGIES

In order to accomplish the recommended actions during the next five years, it will be necessary to secure adequate funding. The current budget provides a limited amount of money for parks and recreation facilities. Therefore, the following strategies are recommended in order to proceed as planned.

Apply for Federal Funding

At the federal level, the Michigan Department of Transportation (MDOT) in conjunction with SEMCOG funds the Transportation Alternatives Program (TAP). A minimum 20 percent local match is required for proposed projects and applications are accepted online on an on-going basis. Activities which may apply to City of Milan include:

- Provision of facilities for pedestrians and bicycles including new or reconstructed sidewalks, walkways, curb ramps, bike lane striping, wide paved shoulders, bike parking, off-road trails, bike and pedestrian bridges, and underpasses; and
- Provision of safety and educational programs for pedestrians and bicyclists designed to encourage walking and bicycling.

Apply for State Funding

At the state level, the Michigan Natural Resources Trust Fund (MNRTF) and the Land and Water Conservation Fund (LWCF) continue to be the primary funding sources for park land acquisition and development. The new Recreation Passport grant also offers some state funding to local units of government.

The MNRTF provides funding for the purchase and development of park land for natural resource-based preservation and recreation.

Grant proposals must include a local match of at least 25 percent of the total project cost. There is no minimum or maximum for acquisition projects. For development projects, the minimum funding request was \$15,000 and the maximum was \$300,000 in 2013. Applications are typically due April 1st.

The LWCF is a federal appropriation to the National Park Service, which distributes funds to the Michigan Department of Natural Resources for development of outdoor recreation facilities. The focus of the program has recently been on trail way systems and other community recreation needs such as playgrounds, picnic areas, skate parks, ball fields, soccer fields, and walking paths. Minimum grant requests were \$30,000 and maximum grant requests were \$100,000 in 2013. The match percentage is 50 percent of the total project cost. Applications are typically due on April 1st.

The Recreation Passport grant program offers funding for the development of public recreation facilities for local units of government. Minimum grant requests were \$7,500 and maximum requests were \$45,000 in 2013. The local match obligation is 25 percent of the total project cost. Applications are usually due on April 1st as well.

Other funding conducted in partnership with the MDNR is available through other state government divisions, such as the Fisheries Division (Inland Fisheries Grants) and the Forest Resources Division (Community Forestry Grants).

The Inland Fisheries programs consider projects that enhance habitat and fisheries, riparian property for public fishing use, water quality, and ecology. While not offered in 2013, they may become available in the future.

Municipalities may use Community Forestry grants to develop a management plan for a municipal forest which would include a component targeting outreach to private landowners. Grant requests may be up to \$20,000 depending on the project type and applications are usually due in the middle of the summer. Detroit Edison also offers tree planting grants for up to \$3,000 to local municipalities in its coverage area.

Apply for Washtenaw County Funding

The Washtenaw County Parks and Recreation Commission has made some funding available for the development of non-motorized trails as part of the Connecting Communities initiative. Funds up to \$600,000 each year during the 2010-2014 period are made available toward the cost of eligible projects.

The intent of the Connecting Communities initiative is to work in partnership with communities and organizations, providing funds to supplement those provided or obtained by the partner organization. Funding is available only for construction, not for planning or design development. Eligible projects are those that accomplish the Commission's primary goal of providing valuable, non-motorized connections between communities thus offering a healthy alternative for recreation, transportation, fitness, and energy conservation.

Apply for Other Grant Funding

There are also a variety of smaller grant programs available for the establishment of greenways, walk/bike ways, or greenway-related facilities such as Bikes Belong Coalition. The Bikes Belong Coalition is sponsored by members of the American Bicycle Industry. Their mission is to put more people on bikes more often. The program funds projects in three categories: facility, education, and capacity building. Requests for funding can be up to \$10,000 for projects such as bike paths, trails, lanes, parking, and safe routes to school. Applications are reviewed on a quarterly basis.

Increase Support for Parks

Public support for parks and recreation will be crucial in determining the level of services the City will be able to provide in the future. A specific park or project millage could be considered in the future for particular projects such as park development, walk/bike way development, or maintenance.

Seek Other Sources of Funding

The City of Milan should investigate additional sources of funding. Seeking donations, attracting sponsors, holding fund-raising events, and seeking out other revenue sources are methods that should continue to be pursued aggressively to raise funding for park land acquisition and development.

SUPPORTING DOCUMENTS

PUBLIC INPUT COMMENTS - AUGUST 19, 2013

Statements	Votes
Group 1	
Develop better parking around youth league area	3
Establish canoe and boat launch on Ford lake—dredge the lake and establish a livery (revenue)	4
Acquire land to complete Milan Greenway project	4
Develop a splash park	6
Develop more active recreation at Nature Park	
Develop trails at Sanford Park	
Develop more fields by Gump Lake—Improve trail to youth ball area	1
Walking trails tied together	2
Improve access and connections from south of the City (Eagle Spring) to parks	
Develop Eagle Springs park	
Take care of what we have and improve	
Land purchase only for trail connections or easements	
Establish pocket park in Blue Danube neighborhood	
Redevelop parking area by Wilson Park to accommodate more parking spaces	2
Add botanical garden within existing parks	2
Improve structures at Sanford Park and prevent dumping	
Connect Nature Park with Wilson Park	4
Develop boardwalk along Ford Lake	6
Maintain what we have	6
Develop a canoe/kayak launch	2
Dredge Ford Lake	
Install lights on ball fields	1
Add press box at ball fields	1
Install bat houses to control mosquitoes in parks	8
Group 2	
Develop a network of non-motorized connections throughout the City, connecting neighborhoods to downtown, parks, and historic sites	
Add bike lanes/trails in the City	
Improve downtown and neighborhood connections	
Implement the Milan Greenway Project	
Connect Nature Park with proposed Milan Greenway	2
Purchase additional property along Ford Lake	
Acquire land along the Saline River	
Add neighborhood park on City water tower site	
Improve Community House and Annex buildings and seek additional use	
Improve signage in all parks	4
Improve park security	

Statements	Votes
Ford Lake	
Dredge Ford Lake	
Provide canoe/boat access/launch to Lake and River	
Add picnic area along the Lake promenade	
Purchase three south side properties between railroad and Wabash to develop potential canoe/kayak launch and fishing access	1
Improve Hideaway Park with picnic area and playground	
Wilson Park	
Add permanent restrooms— in proposed pavilion in redeveloped north parking area	1
Develop a dog park on the east side of Wilson Park, north of the River	1
Develop a walkway on North Shore from Wabash St. to a future dog park or the east side of the Park	
Repair/replace lights in soccer field	5
Install batting cages—youth leagues—and improve parking	
Install proposed Wilson Park pavilion	3
Develop gathering community event space such as a Farmers Market	
Upgrade picnic facilities	
Add skate park	
Softball Park	
Add lights and scoreboards	
Add permanent restroom facilities, concession and storage	
Improve parking area and protect Gump Lake	
Develop picnic area and playground	
Develop a pedestrian entry from Allen Road – consider formalizing the current trail	
Nature Park	
Develop trail/path connections to downtown from Nature Park	
Install boardwalks and scenic overlook by ponds	
Provide nature trails and interpretive signage	
Improve/resurface parking lot	
Add permanent restroom	
Sanford Park	
Develop driving tees/range on the property north of soccer fields	
Provide control fencing along parking lot	1
Improve parking lot	
Consider putting up barriers to close Park in Winter to prevent damage to area	1
Develop a dog park as an alternative	5
Refurbish tennis courts	1
Add permanent restrooms at soccer complex	
Add picnic area and playground near soccer complex	
Work with equestrian and model air field users to maintain/fund future improvements to these areas	

Statements	Votes
Develop non-motorized trails/bike trails	1
Group 3	
City has a property in Eagle Springs that could be developed as a tot lot	1
Connect the Eagle Springs subdivision with the subdivision to the south so that both can enjoy the tot lot	
Encourage the development of a non-motorized connection to the City from the north along Platt Road	
Add bike lanes and bike racks in Milan	1
Add dog waste disposal stations in parks	1
Establish a dog park	1
There is a good playground example at Matthaei Botanical Gardens	
Improve parking at Softball Park- paving and drainage improvements	2
Clean up Gump Lake area	2
Encourage canoeing	
Encourage fishing	
Control Canada geese population	1
Continue to seek funding for Greenway	1
Continue to seek funding for pavilion in Wilson Park	
Formalize and improve a farmer's market area in conjunction with the DDA	2
Improve entryway to Wilson Park from Main St.	2
Improve vegetation maintenance along walkway	
Install a barrier along parking areas in Sanford Park to prevent cars from driving onto fields at Soccer Complex or grass area at Flying Field Area	
Develop more walkways in Wilson Park with lighting and electric power. Improve security with cameras	1
Develop boardwalk & dredge Ford Lake	
Repair basketball backboard & equipment	
Remove dam	2
Improving our parks should be the priority	
Develop trails in Sanford Park	
Make Milan Parks safe and inviting	
Improve safety in the parks with bike patrols	1
Find a better avenue for funding	1
Increase cooperation/collaboration with soccer groups & other non-profits	
Continue to seek more collaboration with Monroe & Washtenaw County	
Develop programming to get kids off the couch	
Improve safety with installing emergency phones in parks	1
Address specific safety issues by coordinating with Police Department	
Reduce/control mosquitoes during special events (add bat houses)	1
Add nature interpretive signage	2
Control invasive-non-native plant species in park properties	
Improve advertising of programs – social media and other means	
Improve signage in Downtown and parks – develop a City way-finding system	1

NOTICE OF DRAFT PLAN AVAILABILITY AND PUBLIC HEARING

Insert notice

PARKS AND RECREATION COMMISSION RESOLUTION

Insert resolution

MINUTES OF THE PUBLIC HEARING

Insert minutes

CITY COUNCIL RESOLUTION

Insert resolution

LETTERS OF TRANSMITTAL

Insert letters

