



For Immediate Release  
April 22, 2022

Contact: Ashlyn Grisetti  
(856) 234-0001, ext. 1289

### **CONSTRUCTION ON MARNE HIGHWAY AND HARTFORD ROAD**

***Mount Laurel, NJ*** --- On Monday April 25 construction will take place at the intersection of Marne Highway and Hartford Road.

There will be a hard closure at the intersection of Marne Highway and Hartford Road for the entirety of the project. Additionally, Hartford Road between Centerton Road and Marne Highway will remain closed. Four police officers will be on location to guide traffic.

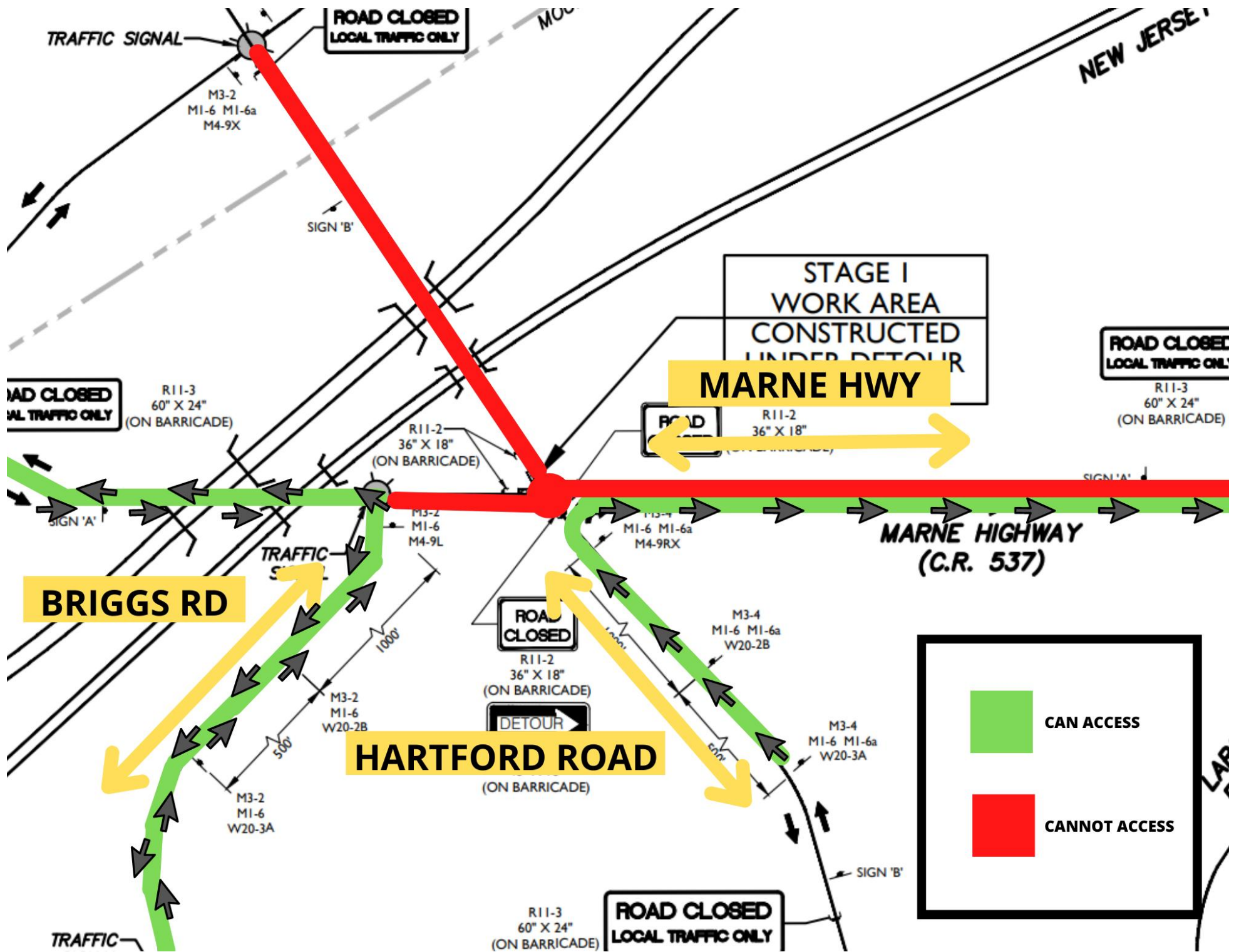
During construction there will be local access allowed to Marne Highway by making a left turn from Briggs Road. Residents will also have access to Marne Highway by making a right turn from northbound on Hartford Road.

Residents will begin to see message boards and pre construction signage starting today.

The project will start at 7:00 AM on Monday April 25 and conclude at 7:00 AM on Thursday April 28, weather permitting.

###





**BRIGGS RD**

**HARTFORD ROAD**

**MARNE HWY**

**MARNE HIGHWAY  
(C.R. 537)**

	<b>CAN ACCESS</b>
	<b>CANNOT ACCESS</b>

**STAGE I  
WORK AREA  
CONSTRUCTED  
UNDER DETOUR**

**ROAD CLOSED  
LOCAL TRAFFIC ONLY**

**ROAD CLOSED  
LOCAL TRAFFIC ONLY**

**ROAD CLOSED  
LOCAL TRAFFIC ONLY**

**ROAD  
CLOSED**

**ROAD  
CLOSED**

**ROAD CLOSED  
LOCAL TRAFFIC ONLY**

TRAFFIC SIGNAL  
M3-2  
MI-6 MI-6a  
M4-9X

SIGN 'B'

NEW JERSEY

R11-3  
60" X 24"  
(ON BARRICADE)

R11-2  
36" X 18"  
(ON BARRICADE)

R11-2  
36" X 18"  
(ON BARRICADE)

R11-3  
60" X 24"  
(ON BARRICADE)

M3-2  
MI-6  
M4-9L

M3-4  
MI-6 MI-6a  
M4-9RX

M3-4  
MI-6 MI-6a  
W20-2B

M3-4  
MI-6 MI-6a  
W20-3A

TRAFFIC SIGNAL

TRAFFIC

R11-3  
60" X 24"  
(ON BARRICADE)

SIGN 'B'

LAP

1000'

500'

DETOUR

(ON BARRICADE)

(ON BARRICADE)

(ON BARRICADE)

(ON BARRICADE)

(ON BARRICADE)