



**US Army Corps  
of Engineers  
HUNTSVILLE DIVISION**

---

**Defense Environmental Restoration Program  
for  
Formerly Used Defense Sites  
Ordnance and Explosive Waste  
Chemical Warfare Materials**

**ARCHIVES SEARCH REPORT**

**FINDINGS**

**CAMP BATTLE**

**New Bern, North Carolina**

**Project Number - I04NC079000**

**MAY 1995**

---

**Prepared by  
US ARMY CORPS OF ENGINEERS  
ST. LOUIS DISTRICT**

200.1e  
I04NC079000\_01.02\_0002



Ordnance and Explosive Waste  
 Chemical Warfare Material  
 Archives Search Report  
 FINDINGS  
 for the  
 Camp Battle  
 New Bern, North Carolina  
 Project Number - I04NC079000

TABLE OF CONTENTS

	<u>Page</u>
<b>1.0 <u>Introduction</u></b> . . . . .	1-1
1.1 <u>Authority</u> . . . . .	1-1
1.2 <u>Subject</u> . . . . .	1-2
1.3 <u>Purpose</u> . . . . .	1-2
1.4 <u>Scope</u> . . . . .	1-2
<b>2.0 <u>Previous Site Investigations</u></b> . . . . .	2-1
2.1 <u>INPR - Camp Battle</u> . . . . .	2-1
<b>3.0 <u>Site Description</u></b> . . . . .	3-1
3.1 <u>Location</u> . . . . .	3-1
3.2 <u>Past Uses of Site</u> . . . . .	3-1
3.3 <u>Current Uses of Site</u> . . . . .	3-1
3.4 <u>Demographics</u> . . . . .	3-1
<b>4.0 <u>Physical Characteristics of Site</u></b> . . . . .	4-1
4.1 <u>Geology/Physiography</u> . . . . .	4-1
4.2 <u>Soils</u> . . . . .	4-2
4.3 <u>Hydrology</u> . . . . .	4-3
4.4 <u>Weather</u> . . . . .	4-3
4.5 <u>Ecology</u> . . . . .	4-5
<b>5.0 <u>Real Estate</u></b> . . . . .	5-1
5.1 <u>DOD Ownership</u> . . . . .	5-1
5.2 <u>Present Ownership</u> . . . . .	5-1
5.3 <u>Significant Past Ownership Other than DOD</u> . . . . .	5-1
<b>6.0 <u>OEW/CWM Site Analysis</u></b> . . . . .	6-1
6.1 <u>Historical Summary of OEW/CWM Activities</u> . . . . .	6-1
6.3 <u>Interpretation of Aerial Photography</u> . . . . .	6-2
6.4 <u>Map Analysis</u> . . . . .	6-3
6.5 <u>Summary of Interviews</u> . . . . .	6-4
6.6 <u>Site Inspection</u> . . . . .	6-4
<b>7.0 <u>Evaluation of Contamination</u></b> . . . . .	7-1
7.1 <u>Conventional Ordnance Contamination.</u> . . . . .	7-1
7.2 <u>Chemical Warfare Material Contamination</u> . . . . .	7-1

Ordnance and Explosive Waste  
Chemical Warfare Material  
Archives Search Report  
FINDINGS  
for the  
Camp Battle  
New Bern, North Carolina  
Project Number - I04NC079000

APPENDICES

- A. REFERENCES
- B. ACRONYMS
- C. REPORTS/STUDIES/LETTERS/MEMORANDUMS
- D. HISTORICAL PHOTOGRAPHS.....NOT USED
- E. INTERVIEWS
- F. NEWSPAPERS/JOURNALS..... NOT USED
- G. PRESENT SITE PHOTOGRAPHS
- H. HISTORICAL MAPS/DRAWINGS.....NOT USED
- I. REPORT DISTRIBUTION LIST

PLATES

- 1. Aerial Photograph - 1955

## **1.0 Introduction**

### **1.1 Authority**

In 1980, Congress enacted the Comprehensive Environmental Response, Compensation and Liability Act (CERCLA) 42 USC 9601 et seq. Ordnance and explosive wastes are included in the CERCLA definition of pollutants and contaminants that require a remedial response.

In 1983, the Environmental Restoration Defense Account (ERDA) was established by Public Law 98-212. This congressionally directed fund was to be used for environmental restoration at Department of Defense (DOD) active installations and formerly used properties. The DOD designated the Army as the sole manager for environmental restoration at closed installations and formerly used properties. The Secretary of the Army assigned this mission to the Corps of Engineers (USACE) in 1984.

The 1986 Superfund Amendments and Reauthorization Act (SARA) amended certain aspects of CERCLA, some of which were directly related to Ordnance and Explosive Waste (OEW) contamination. Chapter 160 of the SARA established the Defense Environmental Restoration Program (DERP). One of the goals specified for the DERP is "correction of environmental damage (such as detection and disposal of unexploded ordnance) which creates an imminent and substantial endangerment to the public health or welfare or to the environment.

The DERP requires that a CERCLA response action be undertaken whenever such "imminent and substantial endangerment" is found at:

A. A facility or site that is owned by, leased to, or otherwise possessed by the United States and under the jurisdiction of the Secretary of Defense.

B. A facility or site that was under the jurisdiction of the Secretary of Defense and owned by, leased to, or otherwise possessed by the United States at the time of actions leading to contamination.

C. A vessel owned or operated by the Department of Defense.

The National Contingency Plan (NCP) was established by the Clean Water Act of 1972. The NCP has been revised and broadened several times since then. Its purpose is to provide the organizational structure and procedures for remedial actions to be taken in response to the presence of hazardous substances, pollutants, and contaminants at a site. Section 105 of the 1980 CERCLA states that the NCP shall apply to all response actions taken as a result of CERCLA requirements.

The March 1990 National Oil and Hazardous Substances Pollution Contingency Plan given in 40 CFR part 300 is the latest version of the NCP. Paragraph 300.120 states that "DOD will be the removal response authority with respect to incidents involving DOD military weapons and munitions, or weapons and munitions under the jurisdiction, custody, and control of DOD."

on April 5, 1990, the U.S. Army Engineer Division, Huntsville (USAEDH) was designated as the USACE Mandatory Center of Expertise (MCX) and Design Center for ordnance and explosive waste. As the MCX and Design Center for OEW, USAEDH is responsible for the design and successful implementation of all Department of the Army OEW remediation actions required by CERCLA. USAEDH will also design and implement OEW remediation programs for other branches of the Department of Defense when requested. In cooperation with the Huntsville Division, the St. Louis District has been assigned the task of preparing Archive Search Reports for those Formerly Used Defense Sites (FUDS) suspected of ordnance and explosive waste (OEW) and chemical warfare materials (CWM) contamination.

## 1.2 Subject

**Camp Battle** is located in Craven County approximately two miles northwest of the city of New Bern, North Carolina. DoD use of the site began in January 1942 when it leased the approximate 70 acres of Glenburnie Park from the city of New Bern. The site served as a small base for guards and security personnel whose mission was to patrol the numerous installations being built or those already in existence in the surrounding area. By March of 1944, the site was classified as surplus but it was reestablished in June for operations as a German prisoner of war camp. In 1946, the site was declared surplus and the lease was canceled on November 6. During the DoD use, only small arms ammunition are thought to have been used and stored on site.

## 1.3 Purpose

This Archives Search Report (ASR) compiles information obtained through historical research at various archives and records holding facilities, interviews with individuals associated with the site or its operations, and personal visits to the site. All efforts were directed towards determining types of munitions used at the site, possible disposal areas, and any unknown training areas. Information obtained during this process was used in developing recommendations for further actions at the site.

## 1.4 Scope

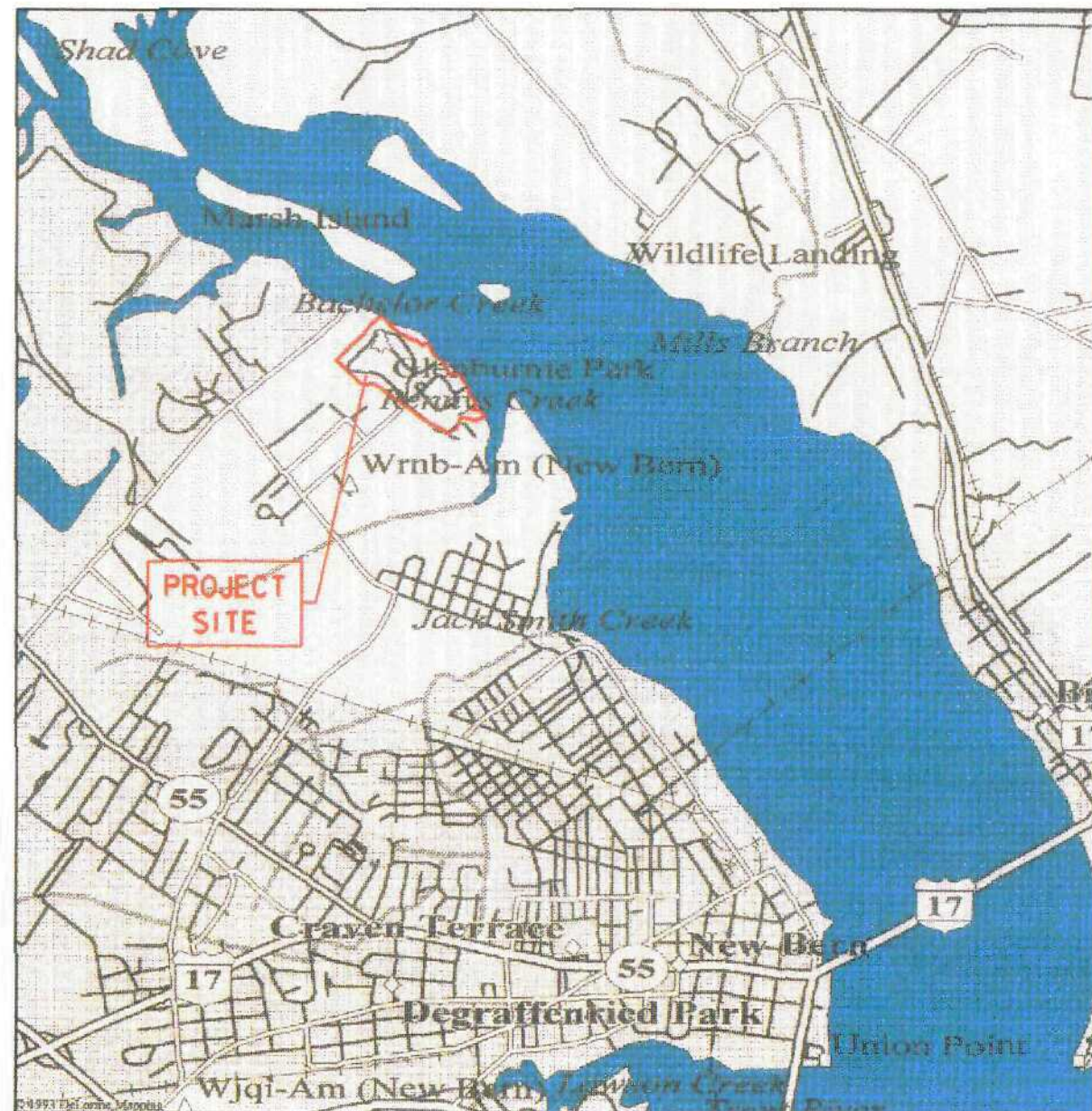
This investigation focused on the potential that OEW and/or CWM contamination could remain on **Camp Battle**. The DERP-FUDS project number is I04NC079000. This report presents the history of the sites, description and characterization of the immediate

surrounding areas, real estate ownership information, findings of a visual site inspections, confirmed ordnance presence based on available records and the site inspections, and evaluation of potential ordnance or chemical warfare material contamination based on sites ordnance components and site information.

## **2.0 Previous Site Investigations**

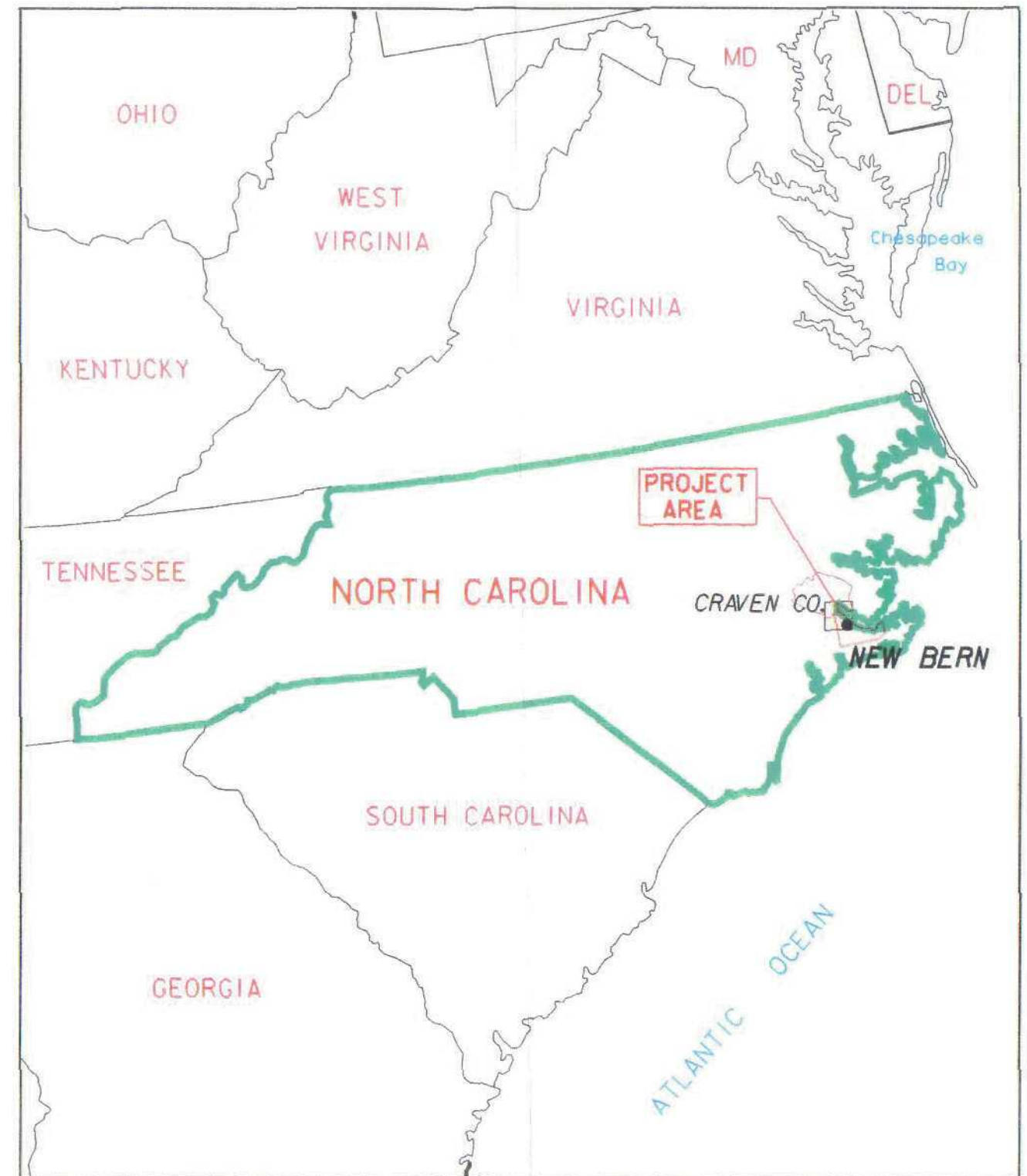
**2.1 INPR - Camp Battle.** Defense Environmental Restoration Program for Formerly Used Defense Sites, Inventory Project Report for project no. I04NC079000, Camp Battle, New Bern, North Carolina, dated 5 March 1991.





# LEGEND

	Population Center		Hwy Ramps	
	State Route		Major Street/Road	
	Geo Feature		State Route	
	Town, Small City		US Highway	
	Hill		Railroad	
	Park		River	
	US Highway		Land Mass	
	Street, Road		Open Water	



CAMP BATTLE  
NEW BERN, NORTH CAROLINA  
CRAVEN COUNTY  
DERP-FUDS \*104NC079000  
VICINITY MAP

NOT TO SCALE

PROJ. DATE: MARCH 1995

DATE OF MAP: 1993

3-APR-1995 12:37

/N/OEW95AB/C26/MAP/CMPBVIC.DGN & CMPBVIC.CIT



### **3.0 Site Description**

#### **3.1 Location**

Camp Battle is located in Craven County approximately two miles northwest of the city of New Bern, North Carolina. The site consists of a calculated 71.19 acres of land. The nearest airport is at Raleigh-Durham, North Carolina. Upon leaving this airport, one drives southeast on U.S. Highway 70 for approximately 110 miles to New Bern.

#### **3.2 Past Uses of Site**

The Eastern Carolina Fair Association owned and used the property for fair activities until 1919. The City of New Bern purchased the land on which Camp Battle was located from the Eastern Carolina Fair Association for \$15,000 on September 24, 1919. The city used the property as a city park prior to DoD use in 1942.

#### **3.3 Current Uses of Site**

The site is presently used as Glenburnie Park, a sewage treatment plant and a parks maintenance storage yard for the city. There is no residential use of the former site.

#### **3.4 Demographics**

##### **3.4.1 Center of Activity**

Camp Battle is located near the City of New Bern which is the county seat of Craven County, North Carolina. This community has numerous centers of activity such as water activities and sports, nature and wild life at the local forest, golfing, and various parks located throughout the community, as well several buildings of historic and cultural interest.

##### **3.4.2 Population Density**

City: New Bern	County: Craven
Area: N/A sq. mi.	Area: 701 sq. mi.
POP: 17,363	POP: 76,772
PD: N/A persons per sq. mi.	PD: 109.5 persons per sq. mi.

Population and area are based on the U.S. Department of Commerce, Bureau of the Census, 1990 statistics, and telephone interviews.

##### **3.4.3 Businesses and Industry Profile**

A review of both telephone interviews and County Business Patterns (1990) assisted in developing a business profile of the area. The City of New Bern is an economic diverse community. The community supports both retail and service industries. The largest employers are: the local school systems and colleges,

Texagulf, Inc., Weyerhaeuser Company, Hatteras Yachts, Moen, Inc., and Amital Spinning Corp. The work force, based on the number of establishments, of Craven County is broken down into the following: manufacturing, 5.6%; agriculture, 1.4%; trades, 44.0%; services, 30.2%; and other miscellaneous, 18.8%.

#### **3.4.4 Type of Housing**

Housing in New Bern is composed of both single and multi-family homes. There are approximately 8,024 housing units with a median value of \$55,600. The median price for rented units is \$234. Fifty percent (50.8%) of the housing units are owner occupied.

#### **3.4.5 New development in the area**

Development in the New Bern area include residential dwellings.

#### **3.4.6 Typical cross-section of Population**

The ancestry in New Bern is diverse. The percent of those under the age of 18 is 26.0%, over 65 years is 16.8%. The median age is 33.7. Approximately 55.6% of the population is white, 43.6% Black, 0.7% Hispanic, 0.3% American Indian or Eskimo, and 0.4% Asian or Pacific Islander.

#### **4.0 Physical Characteristics of Site**

##### **4.1 Geology/Physiography**

The Camp Battle site is located within the Sea Islands downwarp section of the Coastal Plain physiographic province. This physiographic unit is marked by a series of falls and rapids on the west which denotes the Fall Line and a seven-mile wide belt of coastal islands on the east. The region is generally underlain by soft, unconsolidated, easily eroded sediments of lower Cretaceous and Pleistocene age, which in turn overlies hard crystalline rocks composed chiefly of gneiss, schist, and gabbroic rocks of Precambrian and Paleozoic ages (Thornbury 1965).

The older crystalline rocks have been affected by geologic processes to a greater degree than have the younger unconsolidated sediments. The original character of the rock has been changed by intrusions and intense pressure from folding. A long period of erosion ensued in which they were eroded to a nearly level plain, not far above sea level. In the Lower Cretaceous, the area of the Coastal Plain was tilted downward and lowered while the northwest area was raised. The increased gradient enabled large quantities of material to be eroded and transported to the depressed area.

The sedimentary formations of the Coastal Plain consist of Upper Cretaceous, Tertiary, and Pleistocene sediments. These sedimentary formations strike in a general northeast-southwest direction and dip from 12-30 feet per mile in a south-southeasterly directions.

The Cretaceous age formations are the: Tuscaloosa, Black Creek and Peedee formations. The Tuscaloosa is a continental deposit of cross-bedded sands and clays; the Black Creek is marine, shaley clays interlaminated with micaceous fine-grained sands; the Peedee unconformably overlies the Black Creek formation. A period of erosion is indicated by the absence of the basal beds of the Peedee formation, which are present in North Carolina. The Peedee is a sandy marl layered with argillaceous and micaceous sands and limestone. Again, emergence and erosion followed the depositor of the Peedee, as the Paleocene formation known as the Midway is absent. Later in Eocene time, the land was again inundated and the Black Mingo formation was laid down. The Black Mingo consists of glauconitic sands, fossiliferous sandstone and clay. The Black Mingo deposits were followed by a period of recession and transgression of the sea and in middle Eocene time, the McBean formation of sand, laminated clay, glauconitic marl, and limestone was deposited. In late Eocene, the Cape Fear Arch was uplifted so that the beds dip southward or

southwestward. The sea inundated the area around the arch so that the Barnwell sand was deposited near shore and seaward the Santee limestone and Cooper marl were deposited; the Santee and Cooper are interfingered (Siple 1946).

There are no deposits of Miocene age evidenced after the Cooper formation. The Pliocene Waccamaw unconformably overlies the Cooper. The Waccamaw is a sand and shell marl. Following the Pliocene, the glacial or Pleistocene epoch ensued and with it came alternating transgression and regression of the sea and deposition of sands and clays forming a series of terraces. The terraces range in altitude from 270 feet above present sea level to the last stage 25 feet above. The terraces bear the same names as the underlying formations. From highest elevation: Brandywine, Coharie, Sunderland, Wicomico, Penholoway, Talbot, and Pamlico formations (Siple 1946).

#### 4.2 Soils

The site soils of Camp Battle are nearly level and poorly drained. The soil surface is composed of broad flats and small depressional areas. This site consists of several small areas of varying types of soil. The three soil types described here are the largest of the different areas. The soils are characteristically very similar. They are all deep, Their permeability is moderate, and the high water table is at or near the surface for the majority of the year. Water tends to pond on the surface or in small depressions during wet seasons. The risk of corrosion of the soil to uncoated steel and concrete is high.

The most abundant soil is composed of a very dark gray and black surface layer of fine sandy silty clay to a depth of 19 inches. The subsoil layer is made up of light brownish gray, clayey silty sand and then fine sandy silty clay to a depth of 58 inches. The substratum layer is composed of light gray silty clayey sand past a depth of 80 inches.

Another abundant soil type consists of a dark gray silty sandy clay surface layer that is 8 inches deep. The subsoil layer, about 64 inches thick is composed of gray silty clay in the upper part, light brownish gray silty clay in the middle layer and gray silty sandy clay in the lower part.

The third type of soil present at the site has a higher clay content throughout the soil. The surface layer is black fine sandy silty clay about 15 inches deep. The subsurface layer is dark gray sandy clayey silt in the upper part and gray sandy clay in the lower part. The substratum layer, to a depth of 80 inches, is gray sandy clay (Goodwin 1989).

### 4.3 Hydrology

#### 4.3.1 **Surface Water**

The Camp Battle site lies along the estuary of the Neuse River, near its mouth. Much of the site is on a rise with elevations to about 20-30 feet NGVD (Net Geodetic Vertical Datum). Site drainage is by shallow sheet flow or through shallow swales to the river. Discussions with personnel from the Wilmington District of the Corps of Engineers indicate that the majority of the site has a very low flood potential. The only source of potential flooding would be by a hurricane storm surge up the Neuse River. Hydraulic information on file at the Wilmington District indicate maximum storm surge levels at the site of about elevation 9 during an estimated 1.0% annual chance (100-year) storm surge and at elevation 10.1 during a 0.2% annual chance (500-year) event. Ground elevations within the site generally exceed these elevation by 5-15 feet. The nearest discharge records for the Neuse River are at Kinston, North Carolina, which is located about 35 miles upriver from the Camp Battle site. River level and discharge data are available at that site dating back to 1919. The maximum crest elevation at the gage was about 36 feet NGVD in July 1919. At the Camp Battle site, studies performed by the Wilmington District indicate that corresponding flood elevations from the Neuse River would be significantly lower than the storm surge elevations referenced previously. No other pertinent hydrologic information exists for the site.

#### 4.3.2 **Ground Water**

The ground-water aquifers of the Coastal Plain are composed of Upper Cretaceous, Tertiary, and Pleistocene sedimentary formations. The permeable sections of these units are commonly unconsolidated or partially consolidated. Artesian conditions exist in more than two-thirds of the Coastal Plain aquifers, with recharge occurring to the west in the Fall Zone. Regional ground-water flow is to the east-southeast in all the Pre-Pleistocene aquifers.

The major aquifers in the site area are the Cretaceous Peedee, Black Creek and Tuscaloosa formations. Wells tapping sandy layers in the Peedee Formation produce about 200 gallons/minute on average throughout the Coastal Plain but may only produce small yields locally. The Cretaceous Black Creek formation is the predominant source of community and industrial ground water in the site vicinity. Wells tapping this aquifer produce over 350 gallons/minute (Siple 1946).

### 4.4 Weather

The Camp Battle site is in the tidewater area of southwestern North Carolina, about 85 miles northeast of Wilmington and within

45 miles of the Atlantic Ocean. The town of New Bern is a mile south of the site. The area is generally low-lying with average elevations of less than 40 feet, and is characterized by level to gently rolling land with rivers, creeks, and lakes that frequently have considerable swamp or marshland adjoining them. The weather is characteristic of the southeastern United States, with warm humid summers and mild winters. The maritime location of the area results in rather mild weather, caused by the nearby Atlantic Ocean. Winds off of the Atlantic greatly moderate the temperatures throughout the year, because the ocean is relatively warm in the winter and cool in the summer.

Winters are typically mild, with very brief periods of moderately cold weather. Polar air masses reaching the coast during the winter are significantly moderated by the long distance traveled and by the effects of passing over the Appalachian Mountains to the northwest. Snow flurries occur occasionally, but seldom result in measurable snow. On the average, one day per winter may see temperatures below freezing for a full 24 hours. The record low temperature of 0°F was recorded in the area in December, 1989. Temperatures of 90°F or higher are common throughout the summer, but temperatures exceeding 100 degrees are unusual. Several years may pass without a temperature exceeding 100°F. Sea breezes, starting nearly every afternoon, have a pronounced effect on moderating potential high temperatures. The area's record high temperature is 104°F occurring in June 1952. With the nearness of the Atlantic Ocean, the humidity is typically high, making summers somewhat uncomfortable. The prevailing wind direction is from the north through the fall and winter, and from the south-southwest during the spring and summer. Monthly wind speeds are fairly constant at about 8-10 miles per hour, as measured at Wilmington, North Carolina, the nearest recording site.

Precipitation averages about 53 inches annually, and is ample throughout the year, with the most rainfall received during the summer months. July and August average the greatest rainfall (nearly 7 inches) with April, October and November having the lowest totals (3-3.5 inches). Thunderstorms, occurring during the spring and summer, produce much of the moisture. Some are occasionally severe, causing hail and damaging winds. However, as with most coastal areas, water and wind damage is typically associated with hurricanes and storm surges. Climatological data for the area are summarized in TABLE 4.4.



TABLE 4.4  
CLIMATOLOGICAL DATA FOR CAMP BATTLE, NORTH CAROLINA

Month	Temperature (F)			Precip. Average (in.)	Wind Velocity (mph)	Wind Direction
	Average		Average Monthly Mean			
	Min.	Max.				
Jan	35.3	55.9	45.6	4.07	9.0	N
Feb	36.6	58.1	47.4	3.96	9.8	NW
Mar	43.3	64.8	54.1	3.92	10.1	SSW
Apr	51.8	74.3	63.1	3.05	10.2	SSW
May	60.4	80.9	70.7	4.34	9.1	SSW
Jun	67.1	86.1	76.6	5.06	8.5	SSW
Jul	71.3	89.3	80.3	6.81	8.0	SSW
Aug	70.8	88.6	79.7	6.74	7.4	SW
Sep	65.7	83.9	74.8	5.46	7.8	N
Oct	53.7	75.2	64.5	3.21	8.0	N
Nov	43.9	66.8	55.4	3.27	8.1	N
Dec	37.2	59.1	48.2	3.58	8.4	N
Annual	53.1	73.6	63.4	53.18	8.7	N

Source: NOAA 1992, Local Climatological Data (temperature and wind) of Wilmington, North Carolina. NCDC, 1993, Precipitation Data of New Bern FAA AP, North Carolina.

#### 4.5 Ecology

The information provided for this site has been obtained from the U.S. Fish and Wildlife Service and North Carolina Wildlife Resources Commission.

According to the U.S. Fish and Wildlife Service records, the following Federally listed species may occur in Craven County: American alligator (Alligator mississippiensis), threatened; loggerhead sea turtle (Caretta caretta), threatened; green sea turtle (Chelonia mydas), threatened; Kemp's ridley sea turtle (Lepidochelys kempi), endangered; Bald eagle (Haliaeetus leucocephalus), endangered; red-cockaded woodpecker (Picoides borealis), endangered; Bachman's sparrow (Aimophila aestivalis), candidate; Croatan crayfish (Procambarus plumimanus), candidate; Ceromatic noctuid moth (Pyreferra ceromatica), candidate; Dismal Swamp southeastern shrew (Sorex longirostris fisheri), threatened; Virginia (sensitive) jointvetch (Aeschynomene virginica), threatened; Carolina (Wagner's) spleenwort (Asplenium heteroresiliens), candidate; Venus flytrap (Dionaea muscipula), candidate; Godfrey's sandwort (Minuartia godfreyi), candidate;

loose water-milfoil (Myriophyllum laxum), candidate; savanna cowbane (Oxypolis ternata), candidate; Carolina goldenrod (Solidago pulchra), candidate; spring-flowering goldenrod (Solidago verna), candidate; and smooth bog-asphodel (Tofieldia glabra), candidate.

The state of North Carolina lists the following species that occur in Craven County, North Carolina, as endangered, threatened, or special concern: bridle shiner (Notropis bifrenatus), special concern; American alligator, threatened; Neuse River waterdog (Necturus lewisi), special concern; Bald eagle, endangered; red-cockaded woodpecker, endangered; Bachman's sparrow, special concern; Virginia (sensitive) jointvetch, endangered; Carolina spleenwort (Asplenium heteroresiliens), endangered; Tennessee bladder-fern (Cystopteris tennesseensis), endangered; Godfrey's sandwort, endangered; spring-flowering goldenrod, endangered; loose water-milfoil, threatened; yellow fringeless orchid (Platanthera integra), threatened; snowy orchid (Platanthera nivea), threatened; and dwarf bladderwort (Utricularia olivacea), threatened. The state lists the Cool Springs Sand Ridge and Swamp and the Neuse River Floodplain and Bluffs Macrosite as two natural areas of special concern that occur in the vicinity of the Camp Battle Site.

No additional information on the occurrence of rare or endangered species or natural communities is known at this time. This does not mean that other state or federally-listed species may not be present within the areas of interest. An on site inspection by appropriate state and federal personnel may be necessary to verify the presence, absence or location of listed species, or natural communities if remedial action is recommended as part of the final ASR.

## 5.0 Real Estate

### 5.1 DOD Ownership

In 1941, Glenburnie Park, approximately 70 acres, was acquired by lease for the United States Army from the City of New Bern for \$1.00 a year. The lease became validated through a resolution at the Board of Aldermen meeting on January 16, 1942. The resolution states "said lease is to become effective and operative at the pleasure of the Government and to last for any length of time the Government deems it necessary to use the land."

The site served as a small base for guards and security personnel of the Army Ground Forces of the Eastern Defense Command from January 1942 through March 1944. The mission of the camp at that time was to patrol the numerous installations being built or those already in existence in the surrounding area. These installations included Cherry Point Marine Corps Air Station, Camp LeJune Marine Base, Camp Davis, and various industrial plants which produced equipment for the Navy.

Capacity for military personnel was set at 753. Improvements made to the site were at a cost to the government of \$193,300 and consisted of 85 wooden frame buildings. These facilities included:

barracks	recreation building
supply rooms	garage and repair shop
latrines	officer's quarters
mess halls and kitchen	radio building
post exchange	guard house
infirmary	igloo storage

In March of 1944, Camp Battle was classified as surplus to the needs of the War Department. However June 20th, it was reestablished for operations as a prisoner of war camp, housing German prisoners. The prisoner of war camp was manned by personnel of the Army Service Forces, Fourth Service Command. The site remained solely under the DOD control during the period of DOD lease and use. In 1946, the site was declared surplus to the needs of the War Department and the lease was canceled on November 6.

### 5.2 Present Ownership

The present owner of the former site is the City of New Bern.

### 5.3 Significant Past Ownership Other than DOD

No significant past ownerships relating to ordnance or chemical warfare materials was located during this investigation for the former defense site.

## 6.0 OEW/CWM Site Analysis

### 6.1 Historical Summary of OEW/CWM Activities

Investigation of the historical records did not yield any direct information about the specific types of ordnance at Camp Battle. Based on interviews and the mission of Camp Battle, it is inferred that only conventional small arms ammunition was stored at Camp Battle. According to local hearsay, cartridges for .45, .30 and .50 caliber small arms ammunition have been found at Glenburnie Park.

Investigation of historical records and personal interviews have indicated that there was no chemical warfare training or chemical weapons storage at this location.

### 6.2 Records Review

Between October thorough December 1994, the locations listed below were searched for records relating to OEW/CWM activities at Camp Battle New Bern, North Carolina.

Notes on records reviewed follow each entry. At the National Archives and Federal Records Center, the research team examined the following record groups (RG) as they were available and as initial inquiry led the team to believe they might contain useful information. As at other repositories, the research team used finding aids and records managers to locate documents relevant to the team's research. In the conclusion of the archival search searched, very limited documentation of historical data was found.

- RG 77 - Records of the Office of the Chief of Engineers
- RG 121 - Records of the Public Buildings Service
- RG 153 - Records of the Army Adjutant General's Office
- RG 156 - Records of the Chief of Ordnance
- RG 160 - Records of the Headquarters Army Service Forces
- RG 175 - Records of the Chemical Warfare Service
- RG 269 - Records of the General Service Administration
- RG 270 - Records of the War Assets Administration
- RG 291 - Records of the Property Management and Disposal Service
- RG 336 - Records of the Chief of Transportation
- RG 338 - Records of the United States Army Commands
- RG 342 - Records of U.S. Air Force Commands and Activities
- RG 394 - Records of the U.S. Army Continental Commands
- RG 407 - Records of the Adjutant General's Office

6.2.1. National Archives, Washington, D.C.: No information was located at this facility.

6.2.2. National Archives, Suitland, MD: No information was located at the facility.

6.2.3. Washington National Records Center, Suitland, MD:  
No information was located at this facility.

6.2.4. National Archives -Southeast Region, East Point, GA:  
No information was located at this facility.

6.2.5. National Personnel Records Center, St. Louis, MO:  
No information was located at this facility.

6.2.6 U. S. Army Corps of Engineers - Savannah District, Savannah, Georgia: Documents of notification of surplus needs and real property inventory reports were located and reproduced. The inventory reports list facilities and building space. The Real Property Inventory Supplement form of 1 December 1943, lists 2000 square feet of "igloo" storage space. It is not clear if by igloo, it means an ordnance storage magazine (i.e. earth covered) or if it means something else (i.e. quonset hut). Additionally, the document does not mention the number of structures that make up this space.

### 6.3 Interpretation of Aerial Photography

Photo analysis and land-use interpretation were performed using the following photographic sources:

<u>Photo Date</u>	<u>Scale</u>	<u>Approx. Source</u>	<u>Frame ID #s</u>
5 Feb 53	1:28,400	USGS	1 99-101
4 Feb 55	1:20,000	ASCS	3N 143, 144
12 Nov 58	1:20,000	ASCS	9W 2-4
8 May 62	1:10,000	DIA	24 & 25
22 Jan 64	1:20,000	ASCS	4EE 71, 72
			7EE 113, 114
22 Feb 70	1:20,000	ASCS	1LL 215, 216
			2LL 19,20
1 Feb 74	1:20,739	USGS	1 6, 7

Aerial photography for this site was referenced using the Askin, NC USGS 7.5' topographic quadrangle (photo revised 1983).

Imagery from 1953 and 1955 photography is essentially the same (see Plate 1). The project area is generally tree covered, although a road network and sporadic clearings can be seen, as well as some buildings. There is no discernable evidence on the imagery of any igloo storage space or of a dock on the site. However, if all that remained of a dock were the piers, they would probably not show up at the scale of the imagery.

The land use around the site starts to change by 1958. While, the photography shows that the site is still generally tree covered; the trees have grown and there are signs of more under brush than in the past. The roads are still visible through the tree cover. In the center of the site, along the canal, there is

a large distinct rectangular pool. It looks to be sectioned off into two portions, one larger than the other. This could have been used as a settling or retention basin. At the end of N. Glenburnie Rd., upstream of the site, the area has been cleared and a large and a small dock have been built. Additionally about three buildings have been constructed along the road.

Imagery for 1962 and 1964 are essentially the same, except by 1964 a sewage treatment plant has been built in the southeast third of the site along the river. The other two-thirds of the site has a thick canopy of trees obscuring the roads. The clearings in the tree cover are few and it looks like there is a lot more under brush amongst the trees. The very distinct rectangular basin described above have almost filled in, the smaller of the two basins still remained but it was not as distinct. The small and the large docks of site are still in place.

By 1970 a dock was built just northwest of the sewage treatment plant. The plant looked to be in full working order. The rectangular basin has been completely filled in. The tree cover in the park area appears less dense than in 1964. Some ground can be seen again, some of the main roads can be picked out but are not distinct.

The land use of the site is still basically the same in 1974. The canopy of trees is about the same as the 1970 photography. Some areas are very thick with other areas where the ground can be seen. There are some land use changes off the site. Downstream, there is an area where either large single or multi-family homes are being constructed. These could have been used for vacation homes. They face toward the ocean, and have been built on small lots. The marina that goes with these lots have been cut out of a peninsula that is downstream and next to the site.

No imagery was available for this analysis after 1974.

In conclusion, the land use for this site has changed only moderately through the years. Roughly two-thirds of the site has remained as park land with varying amounts of tree cover and under brush. The sewage treatment plant was built in the early 1960's on the southeastern third of the site. The area in and around the site have become progressively more residential.

#### 6.4 Map Analysis

The USGS 7.5' topographic quadrangle that was used in analysis of this site was: Askin, North Carolina (photo revised 1983). The site is located on the southwestern shore of Bachelor Creek at the confluence of the Neuse River. The island that separates the



two waterways is Marsh Island, with the larger Hog Island just upstream. These are the first Islands that would be seen coming from the Sound. Southwest of the site is what looks like an oval race track.

The town of New Bern is located to the southeast of the site. The Neuse River is a low gradient river which flows into the Pamlico Sound, which flows directly into the Atlantic Ocean. The site is now used mostly as Glenburnie Park with the southeast part used as a sewage disposal plant. There is a lot of marsh land in the area.

The towns around the site are of a small nature. In general this area is low lying and marshy. The rivers and creeks in the area have quite a few meanders. There is a lot of vegetation.

The site is serviced by US highways 17 and 70. There are several hard surface roads, two and four lane state routes. The Atlantic and East Carolina and the Norfolk Southern railroad are the major railroads in the area and they run close by the project site. Nearby is a substation, quarry, boat ramps, and radio towers. Across the Neuse River is a drag strip area with a racing pit area. Up stream is a substation and an industrial waste plant with a couple large filtration beds.

The approximate geographic coordinates for this site are: 35° 08' 00" N Latitude; 77° 04' 00" W Longitude.

#### 6.5 Summary of Interviews

Both telephone and personal interviews were conducted while gathering information for the completion of this report. Copies of all the individual telephone and interview conversation record sheets are assembled in chronological order and located in Appendix E. Interviews with Mrs. Nancy Bottorf and Mr. Will Gorges spoke of second hand knowledge of the dumping of small arms ammunition into the Neuse River. Mr. Warren Haines, a veteran of Camp Battle in the 111-th Infantry Regiment out of Philadelphia, was one of the five original personnel on site that helped erect the buildings.

#### 6.6 Site Inspection

During the period 14-16 March 1995 three personnel from the St. Louis District Corps of Engineers travelled to North Carolina to perform a site survey of the former **Camp Battle**. The St. Louis District personnel were Hank Counts, Jennifer James, and Randal S. Curtis. A synopsis of the visit follows:

6.6.1 14 March 1995-Tuesday - The team arrived at the New Bern City Hall to review the city's records concerning the lease of Glenburnie Park to the DoD. The team's point of contact, Mrs. Vicky Johnson, had already left for the day, so the team

continued on to the New Bern Chamber of Commerce to pick up demographic information for the area.

The team continued to the Craven-Pamlico-Carter Regional Library to research the site. The team reviewed the contents of the vertical files for articles and pictures concerning the site and located nothing of value. A historical picture book of the area, *A New Bern Album* by John B. Green, III published in 1985, contained two pictures and a brief statement about the existence of the site, which was photocopied. Several people interviewed prior to the site visit recalled a Sunday feature article a couple of years ago in the New Burn Sun-Journal Newspaper concerning FUDS projects in North Carolina. The article allegedly mentioned Camp Battle as a FUDS site. No one, including several people at the newspaper, recalled the author or the exact time frame. The article was supposed to have reiterated the story of the dumping of small arms ammunition in the river at the close of the Camp Battle. As described, the main source of information for the article appears to have been the information culled from the INPR on the site written by John Baden. On the chance it contained a first hand account by a former veteran, the team attempted to locate it. As the Sun-Journal has no index, locating the article proved difficult. Newspaper records were reviewed for January through June 1991, March through July 1992 and March through July 1993 to no avail.

While at the library, the team was met by Mr. John Baden of the Wilmington District of the U.S. Army Corps of Engineers. Mr. Baden wrote the original INPR and accompanied the team throughout the following day. The site survey team left the library and parted company with Mr. Baden for the evening.

6.6.2. 15 March 1995-Wednesday - The team arrived at the New Bern City Hall and met with Mrs. Vicky Johnson. She provided the team access to the Records of Minutes of the Board of Aldermen Meetings for the City of New Bern. The team was able to locate the records of when the aldermen voted to lease Glenburnie Park to the Government (6 January 1942). This lead the team to the Craven County records office to find the original deed of the property to the City in 1919 from the East Carolina Fair Association and finally the proper tax parcel in Craven County Tax Assessor's office. Copies were made of all pertinent information.

The team traveled to Tryon Palace, to meet with John Green, the local curator of Archival & Historical Structures-North Carolina. Mr. Green wrote the book found at the library the previous day. The team discussed with him the information they had uncovered and other possible sources of information. Mr. Green had also heard the same second and third hand information of ammunition dumping during the closing of the site but did not have or know of any one to provide first hand knowledge of OEW at

the site. He said that he would be surprised if any ordnance would be located on land as the area is thick with people who use metal detectors to look for relics of the past.

The team continued to the Gorges Antique Store and Civil War Museum to meet with Will Gorges. Mr. Gorges has second hand knowledge of where ammunition was supposed to have been dumped into the river. He got his information from Cedric Boyd, a former Mayor of New Bern, who is deceased. Mr. Gorges showed the team on the aerial photography the approximate location. He also mentioned that he was aware of local relic hunters finding cartridges for .45, .30 and .50 caliber small arms ammunition at Glenburnie Park but was unaware of the exact locations. Mr. Gorges made approximately eight phone calls to try and locate a former German POW who was at Camp Battle, to no avail. People who knew of the gentleman were either dead or had moved away from the area.

The team dropped off Ms. James at the library to continue the search for the FUDS article. The remainder of the team returned to the Craven County Tax Assessor's Mapping office to review their aerial photographic coverage of the area, hoping to find pre-1953 imagery with the old dock still in view. Their coverage began in 1960 and was of no assistance. The team then tried the local office of the National Resource Conservation Service, formerly the Soils Conservation Service. They had imagery from 1949 for the area but the dock was not discernable.

The team traveled on to Glenburnie Park to begin the actual site survey. The park was covered with mature pine trees but the ground coverage varied from clear grassy picnic areas to heavy undergrowth forest areas. The team traversed western and northern borders of the park which were overgrown. They located what appeared to be a survey marker at Global Positioning System (GPS) coordinates: 35° 08' 26.5", 77° 03' 54.7". Several concrete fire pits were located in the heavily wooded area along what is thought to have been a parameter road at least three to four decades earlier. Coming to the shoreline of the Neuse River (specifically Bachelor Creek channel), the team located the piers for an old dock at GPS coordinates: 35° 08' 30.4", 77° 03' 42.0". The planks were completely gone, which explains why it doesn't appear on aerial photographs of the area. Just inland from the former dock, the hillside had several non-natural appearing depressions, roughly 3' by 6'. There was no concrete evident. This feature could be the remains of a covered ordnance igloo on the order of 10' by 20', though it seemed more natural than man-made. No other evidence of ordnance type igloos (i.e. earth or timber covered) were located on the site. It was also conjectured that the depressions might have been dugout for cold storage purposes during DoD use, since there was no refrigeration at the Camp Battle according to the real property inventory of 1943. However, this is only supposition.

Many of the foundations for the DoD buildings were still evident and were being used as pads for picnic shelters. The team also explored in and around the sewage treatment facility and maintenance yard on the south east end of the site. The team

left the site, returning to the library to pick up the remaining team member, who could still not locate the article. After discussing the contents described in the article and it was decided to abandoned searching for it.

4. 16 March 1995-Thursday - The team arrived back into St. Louis and returned to the residences.

## **7.0 Evaluation of Contamination**

### **7.1 Conventional Ordnance Contamination.**

Based on the results of the site survey and interviews, the only conventional ammunition used or stored on site was small arms ammunition, though no direct evidence of any of these materials was discovered. Additionally, research did not uncover how much of this material was on site or where it was stored. It is very doubtful that amount of ordnance storage space at Camp Battle would have exceeded 200 square feet. The possible remains of a 200 square foot structure was located during the site inspection, though it was inconclusive. No evidence of an additional 1800 square feet was located. It is suspected that the "igloo" storage space listed on the Real Property Inventory Supplement is either not ordnance related, or that the 2000 square feet is a typographical error of 200. Either way, there is no evidence that there is OEW on the land.

However, there is convincing hearsay accounts concerning ammunition for the facility being dumped in the river at the time it was being closed. The stories indicated that the ammunition was deposited at the end of the dock that existed at the time. It is unknown if the ordnance was deposited loosely or in the original packing boxes.

### **7.2 Chemical Warfare Material Contamination.**

Based on the investigation of historical records reviewed, the results of the site survey and interviews, there is no evidence of chemical warfare materials ever being stored, used or disposed of at Camp Battle.

# **APPENDIX A**

## **REFERENCES**



Ordinance and Explosive Waste  
Chemical Warfare Material  
Archives Search Report  
for the  
**Camp Battle**  
New Bern, North Carolina  
Project Number - I04NC079000

REFERENCES FOR DEMOGRAPHICS

Chamber of Commerce - New Bern, North Carolina

U.S. Department of Commerce. Population and area are based on the Bureau of the Census, North Carolina, 1990 statistics.

REFERENCES FOR GEOLOGY AND SOILS

Goodwin, Roy A.  
1989 *Soil Survey of Craven County, North Carolina.* US Department of Agriculture, Soil Conservation Service.

Siple, G.E.  
1946 *Progress Report on Groundwater Investigations in South Carolina.* Bulletin No. 15, Research Planning and Development Board, State of South Carolina.

Thornbury, William D.  
1965 *Regional Geomorphology of the United States.* Department of Geology, Indiana University, John Wiley and Sons, Inc, New York.

## **APPENDIX B**

### **ACRONYMS**

Ordnance and Explosive Waste  
Chemical Warfare Material  
Archives Search Report  
for the former  
CAMP BATTLE  
New Bern, North Carolina  
Project Number - IO4NC07900

APPENDIX B

ACRONYMS

ASR	Archive Search Report
CERCLA	Comprehensive Environmental Response, Compensation and Liability Act
CEHND	Corps of Engineers, Huntsville Division
CWM	Chemical Warfare Material
CWS	Chemical Warfare Service
DERA	Defense Environmental Restoration Account
DERP	Defense Environmental Restoration Program
DOD	Department of Defense
EOD	Explosives Ordnance Disposal
EODCC	Explosives Ordnance Disposal Command and Control
EPA	Environmental Protection Agency
ERDA	Environmental Restoration Defense Account
FUDS	Formerly Used Defense Sites
FWS	U. S. Fish and Wildlife
GSA	General Services Administration
HTW	Hazardous and Toxic Waste
INPR	Inventory Project Report
IRP	Installation Restoration Program
MCP	Mandatory Center of Expertise
NCP	National Contingency Plan
NOAA	National Oceanic and Atmospheric Administration
OEW	Ordnance and Explosive Waste
RAC	Risk Assessment Code
RG	Record Group
SARA	Superfund Amendments and Reauthorization Act
USACE	U.S. Army Corps of Engineers
USADACS	U.S. Army Defense Ammunition Center and School
USAEDH	U.S. Army Engineer Division, Huntsville, AL
WRNC	Washington National Records Center

## **APPENDIX C**

v

### **REPORTS/STUDIES/LETTERS/MEMORANDUMS**

## **APPENDIX C**

### **REPORTS/STUDIES/LETTERS/MEMORANDUMS**

- C-1 Record of Minutes of Board of Aldermen Meeting, January 6, 1942, Subj: Leasing of Glenburnie Park for Camp Battle
- C-2 Extract from Real Property Inventory Report, 1 December 1943, Camp Battle, North Carolina
- C-3 Notice, Army Service Forces, Office of the Chief of Engineers, Real Estate Division, 19 April 1944, Subj: Surplus Status of New Bern, North Carolina
- C-4 Notice, Army Service Forces, Office of the Chief of Engineers, Real Estate Division, 1 August 1944, Subj: Removal of Surplus Status of New Bern, North Carolina
- C-5 Archive Record Search Log, National Personnel Record Center, St. Louis, MO, National Archives Southeast Region, Atlanta, GA, National Archives Record Administration, Military Reference Branch, Washington, DC, National Archives Record Administration, Suitland, MD and National Archives Downtown Facility, Washington, DC
- C-6 Site Survey Team Safety Briefing Sheet
- C-7 U.S. EPA, Region 4, list of toxic waste generators

## **APPENDIX C-1**

**Record of Minutes of Board of Aldermen Meeting, January 6, 1942,  
Subj: Leasing of Glenburnie Park for Camp Battle**



## CITY OF NEW BERN, N. C.

SHEET NO. 509

RECORD OF MINUTES OF BOARD OF ALDERMEN MEETING

January 6, 1942 19

---

City Clerk

## NOTICE

It is hereby given that the Board of Aldermen of the City of New Bern this day adopted an ordinance entitled "Code of the City of New Bern, North Carolina, 1941", which said ordinance comprises the codification of, in addition to, and repeal of the existing ordinances of the City of New Bern. Said ordinance is filed in the office of the City Clerk and open for inspection of the public, this the 6th day of January 1942

---

City Clerk

Alderman McCarthy made a motion that the above be adopted. Seconded by Alderman Land and carried by roll call vote.

A discussion was held regarding license or insurance on city cabs. The City Attorney stated the city would probably be liable in case of accident if the ordinance was not enforced. Alderman Blow made a motion that the Ordinance regarding taxi cab insurance be referred to the letter. Seconded by Alderman Jones and carried.

Alderman Lawrence made a motion that ten days be allowed to determine what will be done about getting buses in operation in the city. After that time the franchise to be voided. Seconded by Blow and carried.

CEMETERIES: No report.

CITY PROPERTY: Alderman Gray reported rent collections in amount of \$41.85.

Alderman Gray reported the roof on the Old City Hall had been repaired and that the paint for the Armory had arrived, and that the windows there had been fixed.

The Mayor told of the Guard Units of the Infantry coming to New Bern and the facilities offered them. Alderman Blow asked that a guard be placed at the Fire House. Alderman Tolson made a motion that the city go on record offering all cooperation possible to Military officials. Seconded by Alderman Hellinger and carried.

A letter of thanks for the many courtesies shown members of the

## CITY OF NEW BERN, N. C.

SHEET NO. 512

RECORD OF MINUTES OF BOARD OF ALDERMEN MEETING

January 16,

19 42

A recess meeting of the Board of Aldermen was held in the City Hall, Friday night, January 16th at 8 o'clock. Mayor Ray Henderson, presiding and the following Aldermen present.

Alderman	C.T. Hellinger
"	T.G. Blow
"	J.H. Jones
"	H.G. Tolson
"	A.T. Dill
"	H.K. Land
"	C.J. Mc Carthy
"	L.C. Lawrence
"	J.O. Gray

Prayer was said by Alderman Lawrence, after which the Mayor said the purpose of the meeting was to consider the bus franchise and elect a City Auditor.

Alderman C.T. Hellinger read his resignation as a member of the Board of Aldermen. Alderman Mc Carthy made a motion that it be tabled according to regulations, and accepted. Seconded by Alderman Dill and carried.

Every member of the Board expressed regret and all members said they hated to accept his resignation. Mr. Hellinger having served his city for the past 16 years. Alderman Mc Carthy made a motion that the Board stand as an expression of regret in his resignation. Seconded by Alderman Tolson and carried.

The discussion of the bus franchise was held. Later in the meeting Gray Wheeler, one of the owners of the proposed bus company, came before the Board with a telegram reference to equipment. It was shown that he can possibly secure the buses but that he has no assurance of securing license for them. After a general discussion Alderman Tolson made a motion that the bus company be given until Feb. 3rd, the next regular meeting, to show progress in getting the buses here. Seconded by Alderman Land and carried.

The Mayor told the Board the airport resolution was satisfactory. Alderman Mc Carthy made a motion that the election of the City Auditor be postponed until the next regular meeting since the First Ward had but one vote. Seconded by Alderman Tolson and carried.

Mayor Henderson told the Board that the War Department wanted

# CITY OF NEW BERN, N. C.

SHEET NO. 1

## RECORD OF MINUTES OF BOARD OF ALDERMEN MEETING

19

enterize Glenburnie Park for the soldiers stationed there and that  
any expenditure of money could be made it would be necessary  
the property. The following resolution was presented the Board

-----

OF NORTH CAROLINA )  
OF CRAVEN )  
OF NEW BERN )

### RESOLUTION

At a duly called meeting of the City Council or Board of Aldermen  
the City of New Bern, North Carolina, wherein all members were  
present on the 16th day of January, 1942, the following Resolution  
was passed unanimously by the members assembled:

WHEREAS, the City of New Bern wishes to aid and assist the  
United States of America in their fight against the countries above  
and all other enemies of the Government, and,

WHEREAS, the City of New Bern owns a tract of land being locally  
known as the Glenburnie Gardens, said tract being about one and one  
mile from the corporate limits of the City and containing se  
(70) acres of land, more or less, and being more particularly des  
cribed in a deed of conveyance from the Eastern Carolina Fair Associatio  
to the City of New Bern; said deed being recorded in book 228 at page  
in the office of the Register of Deeds for Craven County, and,

WHEREAS, the United States of America desires to lease the  
mentioned tract of land for National Defense purposes.

NOW BE IT HEREBY RESOLVED, that we the City Council or Board  
of Aldermen for the City of New Bern, North Carolina, do hereby grant,  
and authorize the Mayor and City Clerk of the City of New  
Bern to lease the afore mentioned tract of land to the United States  
for the consideration of One (\$1.00) Dollar a year. Said lease  
to become effective and operative at the pleasure of the Government and  
for any length of time the Government deems it necessary to use  
the same.

-----

Alderman Tolson made a motion that the Resolution be adopted.

CITY OF NEW BERN. N. C.

SHEET NO. 514

RECORD OF MINUTES OF BOARD OF ALDERMEN MEETING

19

...ed by Alderman Mc Carthy and carried by roll call vote.

The Mayor read a letter from the Local Government Commission,  
...ing towns to reduce operating costs etc.

No further business motion was duly made and seconded to take a  
... subject to the call of the Mayor.

Ray Henderson

Mayor

Wm. C. Bayfield

City Clerk

## **APPENDIX C-2**

**Extract from Real Property Inventory Report, dated 1 December 1943,  
Camp Battle, North Carolina**

SECRET

1944

72842

## REAL PROPERTY INVENTORY REPORT

1. Camp Battle, N.C. 2. Date of report: December 1 19 43  
 (Name of post, camp, station, or installation)

3. (a) New Bern (b) Craven (c) N. C. 4. (a) A.C.F. (b) E.D.C.  
 Location County State (Using force) (Command or service)

5. \_\_\_\_\_  
 (Type of station (Replacement training Center, Armored division camp, etc.))

6. (a) 4 miles distant from city of (b) New Bern whose population is (c) \_\_\_\_\_

7. TOTAL LAND AREA:

	GOV'T OWNED	LEASED	
(a) Areas maintained under continuous use. . . . .	None	70	acres.
(b) Other areas necessary to operation . . . . .	"	"	acres.
(c) Areas not in use (excess lands) . . . . .	"	"	acres.
(d) Description of excess lands . . . . .	"	"	acres.
(e) Recommendations relative to EXCESS LANDS above _____	None		

8. LEASED FACILITIES: Type (hotel, warehouse, airfield, etc.) None  
 Annual rental . . . . . \$ 1.00  
 Total cost of alterations at Government expense to date . . . \$ \_\_\_\_\_

9. HOUSING:

	(A) DESIGNED CAPACITY	(B) ACTUAL OCCUPANCY OR USE as of Dec. 1 19 43	(C) GENERAL CONDITION	Rating by post	Rating by Service Command
(a) Military Personnel (for capacity, based on 60 sq. ft. per man, 120 sq. ft. per officer) . . . . .	753	753	Good		
(b) Civilian War Housing:					
1. Family units . . . . .	None	None	None		
2. Dormitory units. . . . .	"	"	"		
(c) Prisoners of war (for capacity, based on 60 sq. ft. per man, 120 sq. ft. per officer). . . . .	"	"	"		
(d) Other housing . . . . .	"	"	"		
(e) TOTAL HOUSING . . . . .	753	753	Good		
10. HOSPITALS (bed capacity):					
(a) General hospitals. . . . .	None	None	None		
(b) Station hospitals. . . . .	"	"	"		
11. STORAGE SPACE (square feet):					
(a) Closed storage:					
1. Heated . . . . .	None	None	Good		
2. Unheated . . . . .	"	"	"		
(b) Open storage:					
1. Paved. . . . .	"	"	"		
2. Unpaved. . . . .	"	"	"		
12. OFFICE BUILDING SPACE (square feet). . . . .	6,484	6,484	Good		
13. SHOP SPACE (square feet) . . . . .	7,178	7,178	Good		

SECRET

36-00189ABCD

Incl. 9'

MB-1572

**GENERAL CONDITION**

14. BUILDINGS & STRUCTURES	Number on Gov't. Owned Lands	Number on Leased Lands	Rating by post	Rating by Service Command
(a) Permanent buildings..... (Masonry walls)	None	None	None	
(b) Temporary buildings.....	H	H	H	
(1) Cantonment Type.....	H	71	H	
(2) T. of O. type.....	H	18	H	
(3) Outments.....	H	None	None	
(c) Tents.....	H	H	H	
(d) Hangars..... (Sizes:)	H	H	H	
15. ROADS:				
(a) Primary (miles).....	None	None	H	
(b) Secondary (miles).....	H	1.32	Fair	F
(c) Parking areas (sq. yds.)	H	None	None	
16. RAILROADS:				
(a) Trackage (miles).....	None		H	
(b) Average weight of rail.....				
17. RUNWAYS (list each separately):	Runway No. 1	Runway No. 2	Runway No. 3	Runway No. 4
(a) Direction				
(b) Type of paving				
(c) Length				
(d) Width				
(e) Design load				
(f) Character of approaches				
(g) Type of airplane now using				
(h) Traffic volume				
(i) Are pavements satisfactory for present traffic?				
(j) What is life expectancy with:				
1. Present traffic				
2. Lighter traffic				
3. Heavier traffic				
(k) General Condition - Rating by post Rating by SC.				
18. TAXIWAYS (list each separately):				
(a) Type of paving				
(b) Length				
(c) Width				
(d) Design load				
(e) General condition - Rating by post Rating by SC.				
19. APRONS:				
(a) Type of paving				
(b) Square yards				
(c) Design load				
(d) General condition - Rating by post Rating by SC.				
20. WEATHER:				
(a) Maximum temperature (annual)	68		(d) Normal annual rainfall	54
(b) Minimum temperature (annual)	56		(e) Normal annual snowfall	1.3
(c) Average annual temperature	62			
21. CIVILIAN PERSONNEL - Availability:	Plentiful	Sufficient	Insufficient	
22. TRANSPORTATION FACILITIES:				
(a) RAILROAD: (1) Passenger service - Adequate	No			
	(Yes or no)			
(2) Freight service - Adequate	No			
	(Yes or no)			
(b) AIRWAY: Airport service - Adequate	No			
	(Yes or no)			
(c) HIGHWAY: Access Roads - Adequate	Yes			
	(Yes or no)			
(d) WATERWAYS: - Adequate	Yes			
	(Yes or no) or none)			

23. DEPTH OF GROUND WATER LEVEL: 5' 6" 24. TYPE OF SOIL Sandy
25. GENERAL DRAINAGE CONDITIONS (describe briefly) \_\_\_\_\_
26. FLOODING FROM RIVERS, RAINFALL, ETC.? No DESCRIBE BRIEFLY EXTENT AND RECURRENCE \_\_\_\_\_  
(yes or no)
27. RECURRENT HEAVY WIND STORMS? No DESCRIBE BRIEFLY EXTENT AND RECURRENCE Warnings only  
(yes or no)  
none in last three years
28. WATER SUPPLY: (a) Adequate for 2300 troops based on 70 gallons per capita per day.  
(b) Chemically and bacteriologically satisfactory? yes  
septic tanks discharge to Neuse River (yes or no)
29. SEWAGE SYSTEM: (a) Adequate for unlimited troops based on 70 gallons per capita per day.  
(b) Does discharge of effluent create health menace or nuisance? No  
(yes or no)
30. ELECTRICAL SUPPLY: (a) Is supply source satisfactory? Yes  
(yes or no)  
(b) Condition of power distribution system: Good Yes Satisfactory Yes Unsatisfactory No  
(yes or no) (yes or no) (yes or no)
31. REFRIGERATION: (a) Adequate for 0 troops. (b) Ice plant adequate for 0 troops.
32. PRINCIPAL FUEL: Coal Bituminous Gas No Oil No Other (describe) No
33. SPACE HEATING, PRINCIPALLY BY: Central plant No Furnaces No Stoves Yes
34. LAUNDRY: (a) Is it post-operated? No (b) Rated capacity (number of men) 0  
(yes or no)
35. SERVICES TO OTHERS: Describe utility services, if any, furnished to other agencies or to private consumers:  
None
36. STATE CONDITIONS THAT CONTRIBUTE TO HIGH OPERATION AND MAINTENANCE COSTS: \_\_\_\_\_
37. LIST ESTIMATED COST OF LARGE REPAIRS OR RECONSTRUCTION REQUIRED IN NEXT 12 MONTHS \_\_\_\_\_  
IN THE 12 MONTHS FOLLOWING \_\_\_\_\_
38. LAY-OUT MAP attached showing acreages of areas, location and identification of buildings and improvements, etc.  
If not attached, when will it be submitted? \_\_\_\_\_
39. Are photographs of general area and buildings available? \_\_\_\_\_
- PREPARED BY: J. D. UMBERGER APPROVED: \_\_\_\_\_  
Post engineer Commanding Officer  
J. D. UMBERGER, A. J. SUTHERLAND,  
Major, C of E Lt. Col. C. A. C.
- TO BE ANSWERED BY SERVICE COMMAND  
See 4th SC Ltr 17 Dec. 1943
40. TOTAL COST OF CONSTRUCTION TO DATE \$ \_\_\_\_\_ (Cost of land excluded. State whether estimated or actual and year or years of construction; if part is estimated, give amount of estimate and describe part) Estimated 1941-43
41. SUITABILITY OF POST FOR PRESENT USE: Excellent \_\_\_\_\_ Good \_\_\_\_\_ Fair \_\_\_\_\_ Unsatisfactory \_\_\_\_\_
42. SUITABILITY OF POST FACILITIES FOR PARTIAL USE FOR: (a) Hospital \_\_\_\_\_ (b) Civilian Housing \_\_\_\_\_  
(c) Prisoners of War \_\_\_\_\_ (d) Closed Storage \_\_\_\_\_ (e) Open Storage \_\_\_\_\_
43. SUGGESTED OTHER USE (for Army or otherwise): To be released when no longer needed. However, this is a command decision that should be made by EDC.



REAL PROPERTY INVENTORY REPORTS

9. HOUSING:

(A) DESIGNED CAPACITY

(B) ACTUAL OCCUPANCY OR USE

as of \_\_\_\_\_ 19\_\_

(C) GENERAL CONDITION

E-Excellent  
G-Good F-Fair  
U-Unsatisfactory

Rating by Rating by  
post Service Command

(1) Govt. (2) Leased (3) Total  
Owned

(a) Military Personnel (for capacity, based on 60 sq. ft. per man, 120 sq. ft. per officer)	753	None	753	753		
(b) Civilian War Housing:						
1. Family units	None	"	None	None		
2. Dormitory units	"	"	"	"		
(c) Prisoners of War (for capacity, based on 60 sq. ft. per man, 120 sq. ft. per officer)	"	"	"	"		
(d) Other housing.....	"	"	"	"		
(e) TOTAL HOUSING.....	753	"	753	753		
10. HOSPITALS (bed capacity):						
(a) General hospitals:						
1. No. beds in permanent buildings....	None	"	None	None		
2. No. beds in temporary buildings....	"	"	"	"		
(b) Station hospitals:						
1. No. of beds in permanent buildings	"	"	"	"		
2. No. of beds in temporary buildings	"	"	"	"		
11. STORAGE SPACE (square feet)						
(a) Closed storage:						
1. Heated.....	4169	"	4169	4169		
2. Unheated.....	None	"	None	None		
(b) Open storage:						
1. Paved.....	"	"	"	"		
2. Unpaved.....	"	"	"	"		
(c) Sheds.....	"	"	"	"		
(d) Igloos.....	2000	"	2000	2000		
12. OFFICE BUILDING SPACE (square feet).....	6484	"	6484	6484		
13. SHOP SPACE (square feet)...	7178	"	7178	7178		
14. BUILDINGS & STRUCTURES						
	DESIGNED CAPACITY (use same basis as 9(a) above)	Number on Gov't. Owned Lands	Number on Leased Lands		GENERAL CONDITION Rating by post	Rating by Service Command
(a) Permanent Buildings (Masonry walls)	None	None	None			
(b) Temporary buildings						
1. Cantonment Type	"	"	"			
2. T. of O. type	701	"	28			
3. Hutments.....	52	"	20			
(c) Tents.....	None	"	None			
(d) Hangars.....	"	"	"			
(e) Wharves:						
1. General Purpose						
Wharves.....	"	"	"			
Piers....(No.)	"	"	"			
Berths....(No.)	"	"	"			
2. Marine Repair						
Shops.....	"	"	"			
(No.):						
(Sq. Ft.)..						
3. Ammunition Wharves						
Piers....(No.)	"	"	"			
Berths....(No.)	"	"	"			

Rev. 11-27-44

Date of Report 11 March 1945	Type of Installation: Command (X) Industrial ( )	Kind of Installation: Military (X) Civil R & H & F.C. ( )
Name of Installation (Main Post) Camp Battle, North Carolina	Name of Sub-Installation (Subpost)	OCE Station Code
Division South Atlantic	State North Carolina	Location New Bern
Status of Installation: REESTABLISHED		
Facilities Involved:	Entire Installation (X)	Portion of Installation ( )
Land (Acreage):	War Dept. Owned	Public Lands
Buildings (Gov't-Owned):	Number 85	Type Wooden Frame
Buildings (Leased to Gov't):	Number	Type
Production Equipment Included in Declaration (Industrial Installations Only): None ( ) All ( ) Part ( ) Identify Part:		
Cost to Government (Gov't-Owned Facilities):	Land \$ None	Construction \$ 193,300.00
Annual Rental (Facilities Leased to Gov't):	\$ 1.00	Last Using Force Army Service Forces
Custody and Property Accountability	Who has it at present? (Name & title of Individual Service and Force) Army Service Forces - Corps of Engineers	
	If Corps of Engineers representative, what date was it assumed?	
	If not Corps of Engineers representative, is assumption by Corps of Engineers anticipated?	Estimate Date

## 1. STANDBY (INDUSTRIAL) or INACTIVE (COMMAND)

- Declaration: Effective date Date rec'd
- Is temporary use anticipated?
- Temporary Use:
  - Planning report submitted to OCE (Date)
  - Directive or Authorization rec'd from OCE (Date)  
For following use:
  - Instrument(s) submitted to OCE, where necessary (Date)
  - Instrument(s) received from OCE, where necessary (Date)
  - Report submitted to OCE of action completed (Date)
    - Period of Temporary Use
    - Consideration to Gov't \$ (c) Area
    - Number of Instrument(s) (e) Type of Instrument(s)
  - Termination of Temporary Use (Effective Date)
    - Action Taken
    - Authorization: Date
- Standby or Inactive Classification removed by: (Check which)
  - Reestablishing to Active Status (See 5 below)
  - Redistributing to another Force or Service (See 4 below)
  - Transferring to Excess Status (See 2 below)
  - Transferring to Surplus Status (See 3 below)

## 2. EXCESS (INDUSTRIAL)

- Declaration: Effective date Date rec'd
- Request for Planning Report rec'd in Division Office (Date)
- Planning Report submitted to OCE (Date)
  - Recommendations:
- Is temporary use anticipated?
- Temporary Use:
  - Directive or Authorization rec'd from OCE (Date)  
For following use:
  - Instrument(s) submitted to OCE, where necessary (Date)
  - Instrument(s) received from OCE, where necessary (Date)
  - Report submitted to OCE of action completed (Date)
    - Period of Temporary Use
    - Consideration to Gov't \$ (c) Area
    - Number of Instrument(s) (e) Type of Instrument(s)
  - Termination of Temporary Use (Effective Date)
    - Action Taken
    - Authorization: Date
- Excess Classification removed by: (Check Which)
  - Reestablishing to Active Status (See 5 below)
  - Redistributing to another Force or Service (See 4 below)
  - Transferring to Surplus Status (See 3 below)
  - Transferring to Standby Status (See 1 above)

**SURPLUS ~~PROPERTY~~ COMMAND**

- a. Declaration: Yes Effective date 3/30/44 Date rec'd 4/21/44
- b. Is temporary use anticipated? No
- c. Temporary Use:
- (1) Planning report submitted to OCE (Date) \_\_\_\_\_
  - (2) Directive or Authorization rec'd from OCE (Date) \_\_\_\_\_  
For following use: \_\_\_\_\_
  - (3) Instrument(s) submitted to OCE, where necessary (Date) \_\_\_\_\_
  - (4) Instrument(s) received from OCE, where necessary (Date) \_\_\_\_\_
  - (5) Report submitted to OCE of action completed (Date) \_\_\_\_\_  
(a) Period of Temporary Use \_\_\_\_\_  
(b) Consideration to Gov't \$ \_\_\_\_\_ (c) Area \_\_\_\_\_  
(d) Number of Instrument(s) \_\_\_\_\_ (e) Type of Instrument(s) \_\_\_\_\_
  - (6) Termination of Temporary Use (Effective Date) \_\_\_\_\_  
(a) Action Taken \_\_\_\_\_  
(b) Authorization: \_\_\_\_\_ Date \_\_\_\_\_
- d. Certification to Disposal Agency
- (1) Notice to prepare Form SWPA-5 rec'd in this Office (Date) \_\_\_\_\_
  - (2) Form SWPA-5 submitted to OCE (Date) \_\_\_\_\_  
(a) Does heading of this report show corrected acreage & cost? \_\_\_\_\_
  - (3) Notice rec'd that property has been certified (Date) \_\_\_\_\_
  - (4) Custody and accountability (to be) surrendered on \_\_\_\_\_  
to \_\_\_\_\_
- e. Retransfer to Other Government Department or Agency
- (1) Directive or authorization rec'd from OCE (Date) \_\_\_\_\_
  - (2) Copy of letter from Secretary of War to Government Department or Agency received in this Office (Date) \_\_\_\_\_
  - (3) Custody and accountability (to be) surrendered on \_\_\_\_\_  
to \_\_\_\_\_
  - (4) Remark re: restoration, disposal of buildings and improvements: \_\_\_\_\_
  - (5) Were any of the lands involved acquired from private owners? \_\_\_\_\_  
If so, identify \_\_\_\_\_
  - (6) Remark re: disposal action taken on Lease and Suspension Agreements,  
Mining Claims, and Water Rights: \_\_\_\_\_
- f. Permanent Transfer to Other Government Department or Agency
- (1) Notice to conduct preliminary negotiations rec'd (Date) \_\_\_\_\_
  - (2) Report of preliminary negotiations submitted to OCE (Date) \_\_\_\_\_
  - (3) Directive or Authorization rec'd from OCE (Date) \_\_\_\_\_
  - (4) Inventories of Personal Property commenced by Service Command (Date) \_\_\_\_\_
  - (5) Inventories of Personal Property completed by Service Command (Date) \_\_\_\_\_
  - (6) Report submitted to OCE of action completed (Date) \_\_\_\_\_  
(a) Action Taken \_\_\_\_\_  
(b) Custody and accountability (to be) transferred on (Date) \_\_\_\_\_  
to \_\_\_\_\_  
(c) Lease transfers: Number of leases \_\_\_\_\_ Annual Rental \$ \_\_\_\_\_  
Lease Numbers: \_\_\_\_\_  
(d) Lease transfers reported on CR Form 80 (Date) \_\_\_\_\_
  - (7) Does heading of this report show corrected acreage and cost? \_\_\_\_\_
- g. Cancellation of Leased Properties
- (1) Request for authorization to cancel submitted (Date) \_\_\_\_\_
  - (2) Request for Disposal Plan received \_\_\_\_\_
  - (3) Disposal Plan submitted to O.C.E. \_\_\_\_\_
  - (4) Directive or authorization rec'd from OCE (Date) \_\_\_\_\_
- | (5) Report of Progress                           | No. of Leases |
|--|---------------|
| (a) Total to be cancelled (Annual Rental-\$ )    |               |
| (b) Notices served on Lessors                    |               |
| (c) Joint inspections completed                  |               |
| (d) Restoration or settlement demanded (\$ )     |               |
| (e) Restoration commenced                        |               |
| (f) Restoration or settlement completed (\$ )    |               |
| (g) Restoration or settlement assemblies to OCE  |               |
| (h) Lessors given possession                     |               |
| (i) Releases obtained                            |               |
| (j) Releases submitted to OCE                    |               |
| (k) Cancellations reported on CR Form 80 (Date ) |               |
- (6) Remarks re: Restoration, Disposal of Bldgs and Improvements: \_\_\_\_\_
- h. Surplus Classification removed by: (Check which)
- (1) Reestablishing to Active Status (See 5 below) \_\_\_\_\_
  - (2) Redistributing to another Force or Service (See 4 below) \_\_\_\_\_
  - (3) Transferring to Standby or Inactive Status (See 1 above) \_\_\_\_\_
  - (4) Transferring to Excess Status (See 2 above) \_\_\_\_\_

**REDISTRIBUTION TO ANOTHER FORCE OR SERVICE**

- a. Declaration and Notice to confer with other Service rec'd (Date) \_\_\_\_\_
- b. Report of conference with other Service submitted to OCE (Date) \_\_\_\_\_
- c. Directive or authorization received from OCE (Date) \_\_\_\_\_
- d. Report submitted to OCE of action completed (Date) \_\_\_\_\_
  - (1) Action Taken: \_\_\_\_\_
  - (2) Custody and accountability (to be) transferred on (Date) \_\_\_\_\_  
to \_\_\_\_\_
  - (3) Lease Redistribution: No. of Leases \_\_\_\_\_ Annual Rental \$ \_\_\_\_\_  
Lease Numbers: \_\_\_\_\_
  - (4) Lease Redistribution reported on CR Form 80 (Date) \_\_\_\_\_
- e. Does heading of this report show corrected acreage & cost? \_\_\_\_\_

**REESTABLISHMENT (Reactivation)**

- a. Declaration and directive rec'd from OCE (Date) 8/3/44
- b. Report submitted to OCE of action completed (Date) \_\_\_\_\_
  - (1) Action Taken: \_\_\_\_\_
  - (2) Custody and accountability (~~transferred~~ transferred on (Date) \_\_\_\_\_  
to Army Service Forces - Fourth Service Command
- c. Does heading of this report show corrected acreage & cost? Yes

**TEMPORARY OUTLEASING (Under Delegated Authority)**

- a. Report on Available Lands submitted to OCE (Date) \_\_\_\_\_
  - (1) Acquisition tracts represented: \_\_\_\_\_
  - (2) Acreage included in Report on Available Lands: \_\_\_\_\_
  - (3) Acreage Temporarily Outleased under former Authorizations: \_\_\_\_\_
  - (4) Total acreage being and to be Temporarily Outleased: \_\_\_\_\_
- b. Directive or authorization rec'd from OCE (Date) \_\_\_\_\_

c. Report of Progress		No. of Parcels	Acreage
(1) Advertising for bids or negotiations initiated...			
(2) Advertising for bids or negotiations completed...			
(3) Bids or offers accepted (Income to Gov't \$_____)			
(4) Leases delivered to Lessees. . . . .			
(5) Assemblies and CR Forms 219 to OCE . . . . .			
(6) Bids or offers rejected and outleasing abandoned.			
(7) Leases expired or to be revoked (Rental \$_____)			
(8) Notice of revocation or expiration served. . . .			
(9) Settlement with Lessees, where necessary (\$_____)			
(10) Possession retaken by War Department (Date _____)			
(11) Report of action taken submitted to OCE .....			
(12) Total remaining outleased. . . . .			

**REMARKS:** Inasmuch as subject Installation covered by Lease W 2034 eng 18 has been re-established for use as a Prisoner of War Camp, no further reports will be submitted unless there is a change in status.

*Lease cancelled 6 Nov. 1946.*

**Distribution:**

Original and 1 copy to Real Estate Div., OCE  
One copy to Division Real Estate Office;  
One copy retained in Preparing Office.

*Seymour Rubin*

Real Estate Representative  
**SEYMOUR RUBIN**, 1st Lt., Corps of Engineers,  
50 Whitehall Street, Atlanta, Georgia.

Office Address

Time - Reports will be prepared as of the 15th day of each month and mailed not later than the 18th day of each month.

Number of Copies - The report will be prepared in quadruplicate and distributed as follows:

- Original and one copy to Real Estate Division, OCE
- One copy to Division Real Estate Office
- One copy retained in Preparing Office

When Required - A report will be submitted for each installation or sub-Installation which is in a "Management" or "Disposal" status, i.e., each installation which is the subject of a Directive, Authorization, or Declaration, including idle lands to be outleased for agricultural or grazing purposes under authority delegated by the Under Secretary of War. Submission of reports will be started as soon as "Management" or "Disposal" action has been initiated by the Division Office or notice of such action is received in the Division Office.

When Discontinued - The report may be discontinued the month following a report showing that action has been completed as to all tracts involved. In the case of Temporary Outleasing or Temporary Use of installations in a Standby, Inactive, Excess, or Surplus Status, reporting may be suspended after the affirmative action to effect the outleasing or temporary use has been completed and reporting will be revived as soon as action is started to terminate the outleasing or temporary use.

Reports not Required - "Management and Disposal Reports" will not be required on the following:

- (1) Leases Cancelled under authority delegated to Division Engineers - see paragraph 6, OCE Circular Letter 2710 (Real Estate No. 3).
- (2) Leases Redistributed to another Force or Service of the War Department under authority delegated to Division Engineers - see paragraph 3-b (2), OCE Circular Letter 2710 (Real Estate No. 3).
- (3) Leases Transferred to another Government Department or Agency under authority delegated to Division Engineers - see paragraph 5-b, OCE Circular Letter 2710 (Real Estate No. 3).

The above leases will, however, be reported on CR Form 80, "Division Lease Report".

Separate Reports for Sub-Installations (Sub-posts) - Separate reports will be prepared and submitted where both main posts and sub-posts are involved. For example, if Blank Army Airfield and Auxiliaries 1, 2, and 3 are declared Surplus, four separate reports will be submitted.

"Kind of Installation" - Check whether a Military Installation or Civil (River and Harbor or Flood Control) Project is being reported.

"OCE Station Code" - This space will be left blank until the OCE Station List and Code are issued at a future date.

"Status of Installation" - Insert whichever of the following is applicable as of date of preparation of report:

- Standby (Industrial)
- Inactive (Command)
- Excess (Industrial)
- Surplus (Disposal Action not yet Determined) - This indicates that installation has been declared surplus but that it has not yet been determined which type of disposal action will be followed.
- Surplus (Temporary Transfer to Other Government Department or Agency)
- Surplus (Certification to Disposal Agency)
- Surplus (Retransfer to Other Government Department or Agency)
- Surplus (Permanent Transfer to Other Government Department or Agency)
- Surplus (Cancellation of Leased Property)
- Redistribution to Another Force or Service
- Reestablishment (Reactivation)
- Temporary Outleasing (Under Delegated Authority)

Where segments of an installation are in different statuses (e.g., the manufacturing area of a plant is being "Redistributed to another Force or Service" and the safety area is "Excess (Industrial)", both the statuses will be reported.

### **APPENDIX C-3**

**Notice, Army Service Forces, Office of the Chief of Engineers, Real Estate Division, 19 April 1944, Subj: Surplus Status of New Bern, North Carolina**

*The paper preservation  
for question 10 & 11 only*

DATE 19 April 1944

ARMY SERVICE FORCES  
OFFICE OF THE CHIEF OF ENGINEERS  
REAL ESTATE DIVISION

# WARNING NOTICE

TO: CHIEF, ACQUISITION PLANNING SECTION  
CHIEF, ANALYSIS BRANCH, REALTY RECORDS SECTION  
CHIEF, MILITARY RESERVATION DIVISION, OFFICE OF JUDGE ADVOCATE  
GENERAL (Surplus government owned land)  
CHIEF, DISPOSAL BRANCH  
CHIEF, MILITARY CONSTRUCTION DIVISION, OFFICE OF THE CHIEF OF  
ENGINEERS, Attention: Mr. Lanier  
DIVISION ENGINEER South Atlantic DIVISION, ATTENTION: REAL  
ESTATE OFFICER. FOR INFORMATION ONLY

1. Notice was received \_\_\_\_\_ that the  
\_\_\_\_\_ New Bern Camp \_\_\_\_\_ project  
located in Division designated above at \_\_\_\_\_ New Bern \_\_\_\_\_ (City),  
\_\_\_\_\_ (County), \_\_\_\_\_ North Carolina \_\_\_\_\_ (State) is classified:  
STANDBY \_\_\_\_\_ EXCESS \_\_\_\_\_ SURPLUS X, as of 30 March 1944.

2. This notice involves \_\_\_\_\_ 70 \_\_\_\_\_ (acres) (~~square feet~~)  
which constitutes: the entire project (X), a portion of the project  
( ), land only ( ), land and buildings (X).

3. This is a leased (X) government owned ( ), industrial ( )  
command (X), installation.

4. The property was used for \_\_\_\_\_  
by \_\_\_\_\_ which will operate the property  
on \_\_\_\_\_.

#### **APPENDIX C-4**

**Notice, Army Service Forces, Office of the Chief of Engineers, Real Estate Division, 1 August 1944, Subj: Removal of Surplus Status of New Bern, North Carolina**



Project reestablished to POW  
function as a POW Camp

DATE

1 August 1944

ARMY SERVICE FORCES  
OFFICE OF THE CHIEF OF ENGINEERS  
REAL ESTATE DIVISION

# WARNING NOTICE

TO: CHIEF, ACQUISITION PLANNING SECTION  
~~CHIEF, ANALYSIS BRANCH, REALTY RECORDS SECTION~~  
CHIEF, MILITARY RESERVATION DIVISION, OFFICE OF JUDGE ADVOCATE  
GENERAL (Surplus government owned land)  
CHIEF, DISPOSAL BRANCH  
CHIEF, MILITARY CONSTRUCTION DIVISION, OFFICE OF THE CHIEF OF  
ENGINEERS, Attention: Mr. Lanier  
DIVISION ENGINEER, South Atlantic DIVISION, ATTENTION: REAL  
ESTATE OFFICER. FOR INFORMATION ONLY

Copy for Col. O'Brien

Copy for Major Seifert, Rm. 7252

1. Notice was received 1 August 1944 that the

Camp Battle (New Bern Camp) project  
located in Division designated above at New Bern (City),  
       (County), North Carolina (State) is classified:

~~STANDBY~~ ~~EXCESS~~ ~~SURPLUS~~ ~~PROPERTY~~ as of 20 June 1944.

2. This notice involves 70 (acres) (~~square feet~~)  
which constitutes: the entire project ( 1 ), a portion of the project  
( ), land only ( ), land and buildings ( 1 ).

3. This is a leased ( 1 ) government owned ( ), industrial ( )  
command ( 1 ), installation.

4. The property was used for         
by        which will vacate the property  
on       .

Removed from surplus status. To be rehabilitated for operation as a  
Prisoner of War Camp.

318

## **APPENDIX C-5**

**Archive Record Search Log,  
National Personnel Record Center, St. Louis, MO  
National Archives Southeast Region, Atlanta, GA  
National Archives Record Administration, Military Reference Branch,  
Washington, DC,  
National Archives Record Administration, Suitland, MD,  
and National Archives Downtown Facility, Washington, DC**

**APPENDIX C-6**

**Site Survey Team Safety Briefing Sheet**

**SITE SPECIFIC SAFETY AND HEALTH PLAN (SSHP)**  
**OEW/CWM Archives Search Site Inspection Visit**  
**CAMP BATTLE**  
**NEW BERN, NORTH CAROLINA**  
**Site # I04NC07900**

**1. REFERENCES:**

- a. Safety Manual, CELMS-PM-M, 16 Sep 93 w/ Ch1.
- b. SOP for Reporting Ordnance and Unexploded Ordnance (UXO), CELMS-PM-M, 19 Jan 95.
- c. OEW Guidance Regarding Coordination with EOD Organizations, 10 Jan 95.

**2. GENERAL:** This plan prescribes the safety and health requirements for team activities and operations conducted to determine the presence of ordnance and explosive waste and /or chemical warfare materials at the specified site.

- a. The Safety Officer has final authority on all matters relating to safety. The safety rules will be followed at all times. Any member of the team may stop operations if they observe a situation or activity which poses a potential hazard to any individual or to the operation. All actions must comply with the common sense rule!

- b. All team members will be aware of the local emergency numbers and the location of the nearest telephone.

- c. A minimum of two and a maximum of eight persons will be allowed on-site at any one time.

- d. The property owner is not required to sign the SSHP, but should be politely asked to participate in the safety briefing.

**3. MISSION:** Reconnoiter, document, and photograph areas on Camp Battle suspected to be contaminated with UXO and/or toxic chemical munitions. Camp Battle

4. **SAFETY PRECAUTIONS:** All team members will stay within sight of each other while on site. A first aid kit will be on hand. The following three basic safety rules apply at all times:

a. Rule 1 - Do not touch or pick up anything at the site.

b. Rule 2 - Do not step anywhere you cannot see where you place your foot.

c. Rule 3 - There will be no eating or smoking at the site. Hands will be washed after the survey and prior to eating. Drinking fluids should be done during periodic breaks.

5. **SITE COMMUNICATIONS:** The primary means of communicating with other team members will be by voice. Team members will always remain within sight of each other. Cellular telephones should be carried to facilitate and expedite calling for emergency medical services.

6. **NATURAL HAZARDS:** weather, vegetation, wildlife, swamps

7. **ORDNANCE HAZARDS:** small arms and associated elements.

8. **HAZARD EVALUATION:** Estimate the overall hazards using the following guidelines: (check appropriate item)

☒ Low (small arms ammunition)

☐ Moderate (practice bombs with spotting charge)

☐ High (high explosive munitions, toxic chemicals, WP)

☐ Unknown

9. **EMERGENCY PROCEDURES:** First aid will be rendered for any injuries. In the event of a detonation, everyone should freeze until the situation can be assessed by the team leader. Unnecessary injuries can be avoided by not panicking and planning a logical course of action, which may include retracing your steps out of an impact area. Emergency medical services will be contacted by the most expeditious means available.

10. **SAFETY STATEMENT:** Safety is everyone's business. No unnecessary risks will be taken to obtain photos or other data. Team members are responsible for notifying the project Manager or safety Officer of any physical conditions that may impede or prevent their accomplishment of the mission. An example is allergic reactions to bee stings.

### Important Phone Numbers

Emergency medical service: 911  
Law enforcement agency: 919-636-4113  
Huntsville Safety: (205) 895-1582/1579 <sup>7</sup>  
(800) 627-3532, PIN ~~707~~-2534  
Non-emergency number: 919-636-4113

SSHP reviewed by: *William K. Jones*  
*William K. JAMES*

Encls

1. Safety Briefing Attendance
2. Safety gear

## SITE SURVEY SAFETY BRIEFING

### PPE

☒ Work Clothing  
☐ Gloves  
☐ Hardhat  
☐ Hearing protection  
☐ Safety shoes  
☐ Safety glasses

### Site Hazards

☒ OEW  
☐ CSM  
☐ HTW  
☒ Slips, falls, trips  
☒ Wildlife  
☒ Vegetation

### Weather Precautions

☐ Cold/Heat  
☒ Severe Weather

### Safety Briefing Attendance

All team members and any accompanying personnel  
will be briefed and sign this form:

Print name and organization

Signature

Hank Counts CELMS-PM-M

Hank Counts

Jennifer James CELMS-PM-M

Jennifer James

John A. BADEN CESAW-PE-E

John A. Baden

Randy Curtis CELMS-PM-M

Randy Curtis

\_\_\_\_\_  
\_\_\_\_\_  
\_\_\_\_\_

### MANDATORY MINIMUM SAFETY GEAR

First aid kit (individual)	<u>X</u>
Survival kit	<u>X</u>
Fire starter	<u>X</u>
Space blanket	<u>X</u>
Whistle	<u>X</u>
Mirror	<u>X</u>
Cellular phone	<u>X</u>
Flash light	<u>X</u>
Survey tape	<u>X</u>
Canteen	<u>X</u>



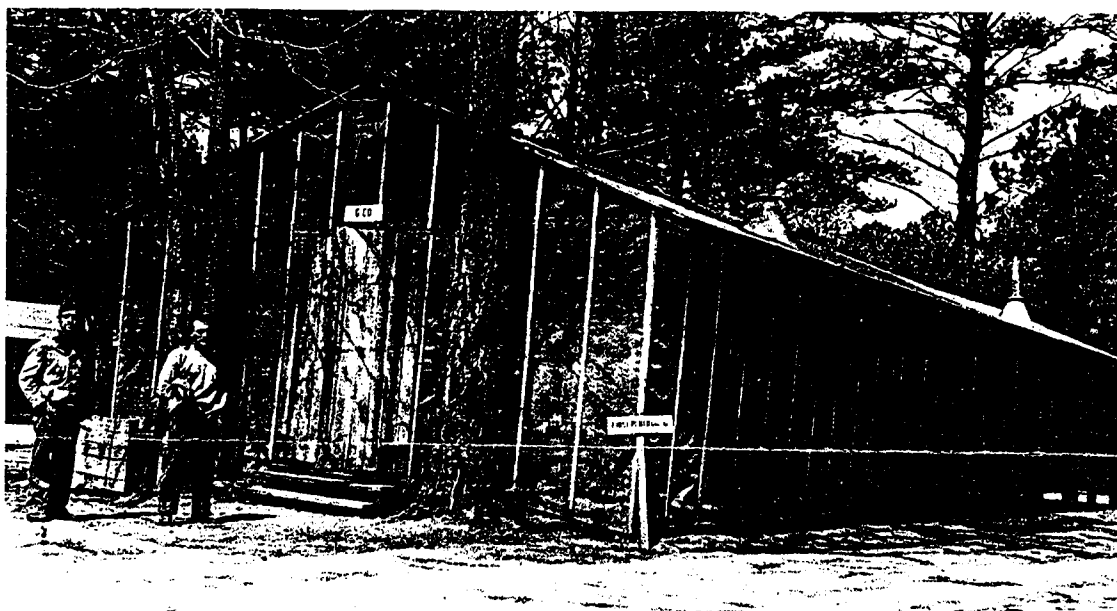
**APPENDIX C-7**

**U.S. EPA, Region 4, list of toxic waste generators**

**(on file in St. Louis District)**

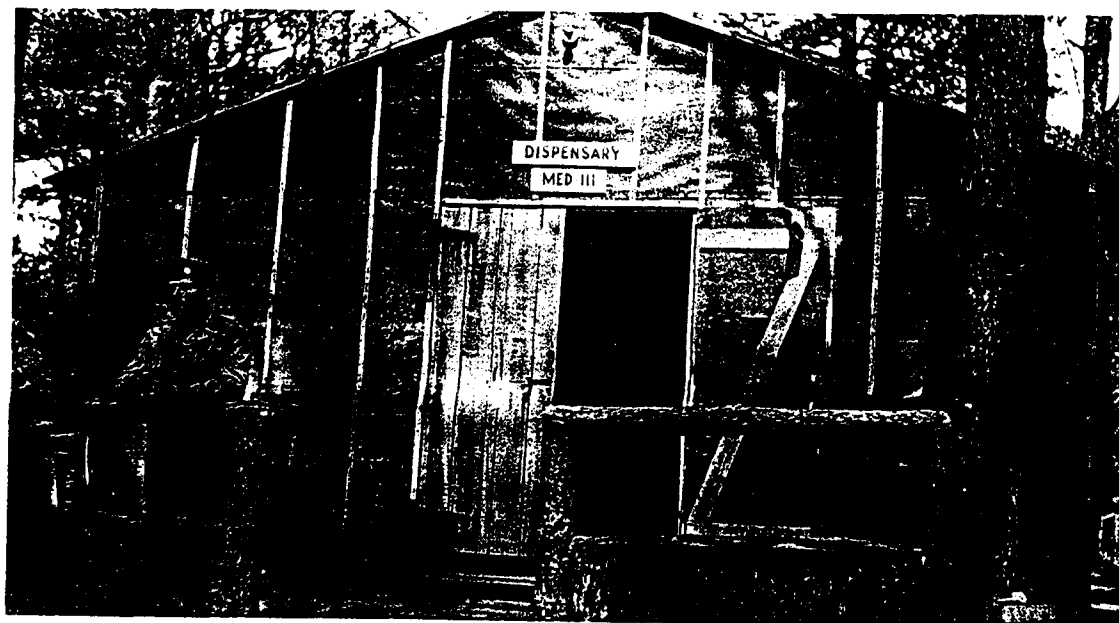
**APPENDIX D**

**HISTORICAL PHOTOGRAPHS**



*Miss Gertrude S. Garraway Collection, New Bern*

Barracks at Camp Battle, photo circa 1942. (site now part of Glenburnie Park)



*Miss Gertrude S. Garraway Collection, New Bern*

Dispensary at Camp Battle, photo circa 1942. (site now part of Glenburnie Park)

**APPENDIX E**

**INTERVIEWS**

Ordnance and Explosive Waste  
 Chemical Warfare Material  
 Archives Search Report  
 for the former  
 CAMP BATTLE  
 New Bern, North Carolina  
 Project Number - I04NC07900

APPENDIX E

INTERVIEWS

<u>Individual Contacted</u>	<u>Position/ Organization</u>	<u>Date Interviewed</u>
Mr. John Baden	COE, Wilmington District	24 Feb 95
Vicky	New Bern Chamber of Commerce	7 Mar 95
Mr. David Muse	City Engineer, New Bern	7 Mar 95
Mr. John Leys	Visitors Center, New Bern	7 Mar 95
Mrs. Ann Horner Mr. John Green	Tryon Palace Historical Site	7 Mar 95
Mr. Warren Haines	Veteran	7 Mar 95
Mrs. Nancy Bottorf	Director, Parks and Recreation Department	7 Mar 95
Secretary	City Clerk's office	7 Mar 95
Mrs. Jean Buck	New Bern Historical Society	8 Mar 95
Secretary	Craven County Planning	8 Mar 95
Cindy	Sun-Journal newspaper	8 Mar 95
Mr. Sakula	City of New Bern Planning Division	9 Mar 95
Ms. Vicky Johnson	City Clerk, New Bern	9 Mar 95
Mr. Danny Kuntz	Maintenance Supervisor, Parks and Recreation	9 Mar 95
Dispatcher	Craven County Sheriff's Department	9 Mar 95

Ordnance and Explosive Waste  
Chemical Warfare Material  
Archives Search Report  
for the former  
CAMP BATTLE  
New Bern, North Carolina  
Project Number - I04NC07900

APPENDIX E

INTERVIEWS

<u>Individual Contacted</u>	<u>Position/ Organization</u>	<u>Date Interviewed</u>
Captain McAlexander	New Bern Police Dept.	10 Mar 95
Mr. Victor Jones	New Bern Craven County Public Library	13 Mar 95
Mr. Rick Dove	Neuse River Foundation	13 Mar 95
Mr. Will Gorges	Antique Store	13 Mar 95

**TELEPHONE OR VERBAL CONVERSATION RECORD**

DATE: 24 February 1995

For use of this form, see AR340-15; the proponent agency is the Adjutant General's Office.

<b>SUBJECT OF CONVERSATION</b>  Camp Battle - New Bern, NC		
<b>INCOMING CALL</b>		
<b>PERSON CALLING</b>	<b>ADDRESS</b>	<b>PHONE NUMBER AND EXTENSION</b>
<b>PERSON CALLED</b>	<b>OFFICE</b>	<b>PHONE NUMBER AND EXTENSION</b>
<b>OUTGOING CALL</b>		
<b>PERSON CALLING</b>  Randy Curtis	<b>ADDRESS</b>  CELMS-PM-M	<b>PHONE NUMBER AND EXTENSION</b>  314-331-8786
<b>PERSON CALLED</b>  John Baden	<b>OFFICE</b> Wilmington District CESAW-PD-E P.O. Box 1890 Wilmington, NC 28402	<b>PHONE NUMBER AND EXTENSION</b>  910-251-4754

**SUMMARY OF CONVERSATION:**

After exchanging voice mail messages since 8 February 1995, I was able to speak with Mr. Baden between 1145 and 1203. He wrote the INPR for Camp Battle in March of 1991. We discussed the site and the scarcity of information. The property was leased from the city. He suggested we contact Ms. Nancy Bottorf, Director of Parks and Recreation for the city of New Bern, North Carolina for additional information.

**FOLLOW-UP:** 7 March 1995 - Jennifer James

I contacted Mr. Baden at 2:40-2:45 to inform him of when we were going to make a site visit to New Bern. I explained that we were going to fly into Raleigh Tuesday 14 March and then drive to New Bern. I gave him the name and number of our hotel and said we would be checking in late Tuesday afternoon. Mr. Baden then made comment that he would drive down from Wilmington Tuesday afternoon and stay at the same hotel. I also informed him that we had an appointment Wednesday morning to go to the site with Mr. Green.

Mr. Baden and I have several mutual acquaintances that are in the QASAS field and we spent some time comparing notes. In closing we decided that we would get in touch on Monday to make sure everything was still on line.

**TELEPHONE OR VERBAL CONVERSATION RECORD**

DATE: 7 March 1995

For use of this form, see AR340-15; the proponent agency is the Adjutant General's Office.

SUBJECT OF CONVERSATION  Camp Battle		
INCOMING CALL		
PERSON CALLING	ADDRESS	PHONE NUMBER AND EXTENSION
PERSON CALLED	OFFICE	PHONE NUMBER AND EXTENSION
OUTGOING CALL		
PERSON CALLING  Jennifer James	ADDRESS  CELMS-PM-M	PHONE NUMBER AND EXTENSION  314-331-8053
PERSON CALLED  Vicky	OFFICE  New Bern Chamber of Commerce	PHONE NUMBER AND EXTENSION  919-637-3111

**SUMMARY OF CONVERSATION:**

Contacted the Chamber of Commerce in New Bern North Carolina at 8:30-8:35. I enquired about Glenburnie Park which is the location of the World War II site of Camp Battle. Vicky had no knowledge of the park or Camp Battle. She referred me to a Mr. Will Gorges at the Civil War Museum 919-633-2818, Mr. John at the Visitor's Center 1-800-437-5767, and Nancy Bottors of the Parks and Recreation Department 919-636-4004.

She suggested for real estate information and engineer information to contact the City Clerk's Office at 919-636-4001 and the City Engineer at 919-636-4004.

She also said that there is a \$6.00 charge for demographic information that they have prepared. I mentioned that we would be by next week and pick up a package. The address of the chamber is 233 Middle Street, Suite 106. In closing I asked for motel recommendations and she referred me to several local establishments.



**TELEPHONE OR VERBAL CONVERSATION RECORD**

DATE: 7 March 1995

For use of this form, see AR340-15; the proponent agency is the Adjutant General's Office.

SUBJECT OF CONVERSATION  Camp Battle		
INCOMING CALL		
PERSON CALLING	ADDRESS	PHONE NUMBER AND EXTENSION
PERSON CALLED	OFFICE	PHONE NUMBER AND EXTENSION
OUTGOING CALL		
PERSON CALLING  Jennifer James	ADDRESS  CELMS-PM-M	PHONE NUMBER AND EXTENSION  314-331-8053
PERSON CALLED  David Muse	OFFICE  City Engineer New Bern, NC	PHONE NUMBER AND EXTENSION  919-636-4004

**SUMMARY OF CONVERSATION:**

Contacted the City Engineer's Office at 9:40. The city engineer Mr. David Muse was not in the office at that time so I spoke with his assistant Renee Parish. I explained to Miss Parish our area of interest concerning the original engineering drawings and maps for the former site called Camp Battle. She assured me that they would take a look and see what they had. She is going to call me back later today or tomorrow with any information that they find.

**FOLLOW-UP 8 March 1995**

Renee Parish called me at approximately 7:15 to inform me that they had no luck finding any engineering drawings or maps for the former defense site called Camp Battle. Ms. Parish stated that the only information they had was by "word of mouth" that the camp was located at Glenbernie Park. She suggested calling the Craven County Planning Department at 919-636-6618 to see if they had any information.

**TELEPHONE OR VERBAL CONVERSATION RECORD**

DATE: 7 March 1995

For use of this form, see AR340-15; the proponent agency is the Adjutant General's Office.

SUBJECT OF CONVERSATION  Camp Battle		
INCOMING CALL		
PERSON CALLING	ADDRESS	PHONE NUMBER AND EXTENSION
PERSON CALLED	OFFICE	PHONE NUMBER AND EXTENSION
OUTGOING CALL		
PERSON CALLING  Jennifer James	ADDRESS  CELMS-PM-M	PHONE NUMBER AND EXTENSION  314-331-8053
PERSON CALLED  Mr. John Leys	OFFICE  Visitors Center	PHONE NUMBER AND EXTENSION  1-800-437-5767

**SUMMARY OF CONVERSATION:**

Contacted Mr. Leys at 10:20-10:25 to enquire about Glenburnie Park and the former Camp Battle. Mr. Leys is a local historian whose main interest is in the Revolutionary and Civil War eras. He remarked that World War II isn't history yet. He stated that he didn't believe that the World War II camp was located at where Glenbury Park is at now. He referred me to a Mrs. Ann Horner at the Tryon Palace, a historical site in town, to confer with her on the location. He stated that he used her as a point of reference for when former veterans come to town to visit the site. I thanked Mr. Leys for his time.

**TELEPHONE OR VERBAL CONVERSATION RECORD**

DATE: 7 March 1995

For use of this form, see AR340-15; the proponent agency is the Adjutant General's Office.

<b>SUBJECT OF CONVERSATION</b>  Camp Battle		
<b>INCOMING CALL</b>		
<b>PERSON CALLING</b>	<b>ADDRESS</b>	<b>PHONE NUMBER AND EXTENSION</b>
<b>PERSON CALLED</b>	<b>OFFICE</b>	<b>PHONE NUMBER AND EXTENSION</b>
<b>OUTGOING CALL</b>		
<b>PERSON CALLING</b>  Jennifer James	<b>ADDRESS</b>  CELMS-PM-M	<b>PHONE NUMBER AND EXTENSION</b>  314-331-8053
<b>PERSON CALLED</b>  Mrs. Ann Horner Mr. John Green	<b>OFFICE</b>  Tryon Palace Historical Site	<b>PHONE NUMBER AND EXTENSION</b>  1-800-767-1560

**SUMMARY OF CONVERSATION:**

Contacted Mrs. Ann Horner at 12:55 to enquire about the FUD site of Camp Battle. Mrs. Horner referred me to Mr. John Green to answer my questions.

Mr. Green is the Curator of Archival & Historical Structures for the state of North Carolina Historical Sites and Gardens. Mr. Green is also author of a book titled *A New Bern Album*, which is a pictorial history of New Bern North Carolina from the Civil War to the 1960's. Mr. Green said his research into Camp Battle turned up very little except for some pictures that were in a private collection from a newspaper reporter that had worked the local area during the 1930's, 1940's, and 1950's. These pictures (five or six) are published in his book.

Mr. Green is familiar with the actual location of where Camp Battle was located. It is now part of Glenburnie Park which is city property. He stated that some of the picnic structures are built over the original concrete pads of the buildings of Camp Battle. He mentioned that he believed the War Department leased the land from the city during the war.

I inquired about the possibility of unspent ordnance, ammunition, or explosives being affiliated with Camp Battle. Mr. Green recalled a local newspaper article dealing with the government's search for formerly used defense sites and the affiliated hazardous waste clean-up. He said that Camp Battle was brought up in the article along with an interview with a veteran who was stationed at Camp Battle. The veteran had remarked in the article that they had "thrown cases of small arms in the river" (Neuse) to get rid of them during the closing of the camp. He suggested calling the Sun-Journal to see if anyone working Sunday features remembered the article, and to possibly get a copy for review as it was published a couple of years ago.

Mr. Green volunteered to be our guide to the original Camp Battle site. He also stated that the camp originally was an Army Camp and later became a Prison of War Camp. Mr. Green also brought up that the Civilian Community Corps (CCC) camp was in a different location nearby called Camp Patterson after a local doctor who donated the land. He suggested that we meet Wednesday morning at about 10:00 (15 March) and he will take us on site. We are to meet at the one story stucco building called the visitor's center in

front of the Tryon Palace on the corner of George and Pollock street. We can have Mr. Green paged at the visitor's center as his office is in a building behind the center. I thanked Mr. Green and told him I would look forward to meeting him next week.

**TELEPHONE OR VERBAL CONVERSATION RECORD**

DATE: 7 March 1995

For use of this form, see AR340-15; the proponent agency is the Adjutant General's Office.

SUBJECT OF CONVERSATION  Camp Battle		
INCOMING CALL		
PERSON CALLING	ADDRESS	PHONE NUMBER AND EXTENSION
PERSON CALLED	OFFICE	PHONE NUMBER AND EXTENSION
OUTGOING CALL		
PERSON CALLING  Jennifer James	ADDRESS  CELMS-PM-M	PHONE NUMBER AND EXTENSION  314-331-8053
PERSON CALLED  Mr. Warren Haines Sr. /Veteran	OFFICE  Home 404 Ninth Street New Bern, NC 28560	PHONE NUMBER AND EXTENSION  919-633-1505

**SUMMARY OF CONVERSATION:**

I contacted Mr. Haines at approximately 15:47 to make enquiries about his involvement in the former defense site of Camp Battle. Mr. Haines was one of the original five people to be stationed at Camp Battle.

Mr. Haines was part of the 11th Infantry Division out of Philadelphia which was assigned to Camp Battle. He and four other people were the first ones to arrive on scene at Camp Battle in January of 1942. They were detailed into finishing the construction of the quarters on location. He stated that the concrete slabs were poured, but they put up the rest of the prefabricated materials to make the barracks and other support buildings for Camp Battle. Families in the community "put them up" until the camp was finished. He was then stationed overseas about nine months later.

Mr. Haines confirmed that the camp was located at what is now Glenburnie Park and the waste treatment plant. He made statement that he has been trying to have a memorial erected at the park in tribute to those who served, but has not been successful as of yet.

Mr. Haines explained that he was a cook, but the main mission of the camp was patrolling the coastal area from Wilmington to Moorehead City. He also made comment that they used police dogs also on these patrols.

When I questioned Mr. Haines about the use and storage of ammunition or explosives at Camp Battle he was not aware of where any of the ammunition was stored but assured me that the only ammunition that would have been at this location would have been small arms for the rifles and pistols used by the guard force.

I asked if he was aware of any dumping of ammunition into the river during the operational years or during the closure of Camp Battle. He responded that he was not aware of any dumping during his tour at Camp Battle, but he was not stationed there when it was being closed up.

Mr. Haines said that he also had a photo or two of the men at Camp Battle if anyone was interested, and that if he could be of any more help to give him a call.

**TELEPHONE OR VERBAL CONVERSATION RECORD**

DATE: 7 March 1995

For use of this form, see AR340-15; the proponent agency is the Adjutant General's Office.

<b>SUBJECT OF CONVERSATION</b>  Camp Battle		
<b>INCOMING CALL</b>		
<b>PERSON CALLING</b>	<b>ADDRESS</b>	<b>PHONE NUMBER AND EXTENSION</b>
<b>PERSON CALLED</b>	<b>OFFICE</b>	<b>PHONE NUMBER AND EXTENSION</b>
<b>OUTGOING CALL</b>		
<b>PERSON CALLING</b>  Jennifer James	<b>ADDRESS</b>  CELMS-PM-M	<b>PHONE NUMBER AND EXTENSION</b>  314-331-8053
<b>PERSON CALLED</b>  Mrs. Nancy Bottorf Director	<b>OFFICE</b>  Parks and Recreation Department	<b>PHONE NUMBER AND EXTENSION</b>  919-636-4060

**SUMMARY OF CONVERSATION:**

Contacted Mrs. Bottorf at approximately 2:20 to make enquiries about the former site of Camp Battle. Mrs. Bottorf confirmed that to the best of her knowledge the Glenburnie Park and the sewage disposal plant are now on the former site. She stated that the park is approximately 25 acres, and she wasn't sure what the size of the sewage disposal plant is. She has worked for the city for approximately 31 years.

When I questioned Mrs. Bottorf about rumors of ammunition being dumped into the river, she commented that "even her own father had told her that". She remembers her father saying that when they closed the camp they threw the ammunition into the river. Her father is now deceased.

She referred me to a veteran named Mr. Warren Haines Sr. as a possible point of contact to talk with at 919-633-1505.

I explained that we would be making a site visit down to the area. She stated that her maintenance people would be aware that we would be in the area and if there was anything else she could do to let her know.

**TELEPHONE OR VERBAL CONVERSATION RECORD**

DATE: 8 March 1995

For use of this form, see AR340-15; the proponent agency is the Adjutant General's Office.

<b>SUBJECT OF CONVERSATION</b>  Camp Battle		
<b>INCOMING CALL</b>		
<b>PERSON CALLING</b>	<b>ADDRESS</b>	<b>PHONE NUMBER AND EXTENSION</b>
<b>PERSON CALLED</b>	<b>OFFICE</b>	<b>PHONE NUMBER AND EXTENSION</b>
<b>OUTGOING CALL</b>		
<b>PERSON CALLING</b>  Jennifer James	<b>ADDRESS</b>  CELMS-PM-M	<b>PHONE NUMBER AND EXTENSION</b>  314-331-8053
<b>PERSON CALLED</b>  Secretary	<b>OFFICE</b>  City Building Clerk's Office	<b>PHONE NUMBER AND EXTENSION</b>  919-636-4001

**SUMMARY OF CONVERSATION:**

I called at 9:00 the Clerk's Office at the New Bern City Building to inquire about any real estate documents relating to the former Camp Battle which is now Glenburnie Park and the city's sewage disposal plant. The office referred me to the Inspections and Planning Branch. The Inspections and Planning Branch said that they had no historical records of that sort and to contact the New Bern Historical Society at 919-638-8558.

**TELEPHONE OR VERBAL CONVERSATION RECORD**

DATE: 8 March 1995

For use of this form, see AR340-15; the proponent agency is the Adjutant General's Office.

<b>SUBJECT OF CONVERSATION</b>  Camp Battle		
<b>INCOMING CALL</b>		
<b>PERSON CALLING</b>	<b>ADDRESS</b>	<b>PHONE NUMBER AND EXTENSION</b>
<b>PERSON CALLED</b>	<b>OFFICE</b>	<b>PHONE NUMBER AND EXTENSION</b>
<b>OUTGOING CALL</b>		
<b>PERSON CALLING</b>  Jennifer James	<b>ADDRESS</b>  CELMS-PM-M	<b>PHONE NUMBER AND EXTENSION</b>  314-331-8053
<b>PERSON CALLED</b>  Mrs. Jean Buck	<b>OFFICE</b>  New Bern Historical Society	<b>PHONE NUMBER AND EXTENSION</b>  919-638-8558

**SUMMARY OF CONVERSATION:**

I contacted the historical society at 9:45 to ask about information on the former defense site of Camp Battle. Mrs. Buck informed me that the only material they had on Camp Battle was what was in Mr. Green's book that they had a copy of. She suggested going to the county for any real estate records.



**TELEPHONE OR VERBAL CONVERSATION RECORD**

DATE: 8 March 1995

For use of this form, see AR340-15; the proponent agency is the Adjutant General's Office.

<b>SUBJECT OF CONVERSATION</b>  Camp Battle		
<b>INCOMING CALL</b>		
<b>PERSON CALLING</b>	<b>ADDRESS</b>	<b>PHONE NUMBER AND EXTENSION</b>
<b>PERSON CALLED</b>	<b>OFFICE</b>	<b>PHONE NUMBER AND EXTENSION</b>
<b>OUTGOING CALL</b>		
<b>PERSON CALLING</b>  Jennifer James	<b>ADDRESS</b>  CELMS-PM-M	<b>PHONE NUMBER AND EXTENSION</b>  314-331-8053
<b>PERSON CALLED</b>  Secretary	<b>OFFICE</b>  Craven County Planning Department	<b>PHONE NUMBER AND EXTENSION</b>  919-636-6618

**SUMMARY OF CONVERSATION:**

I contacted the county folks at 10:00 to find out if they would have any real estate records, engineering drawings, engineering maps, etc of the former Camp Battle. The secretary responded that what is now Glenbernie Park is owned by the city in the city limits and therefore they would have no records of this property. She referred me to Mr. Sakula at the city building at 919-636-6618.

**TELEPHONE OR VERBAL CONVERSATION RECORD**

DATE: 8 March 1995

For use of this form, see AR340-15; the proponent agency is the Adjutant General's Office.

<b>SUBJECT OF CONVERSATION</b>  Camp Battle		
<b>INCOMING CALL</b>		
<b>PERSON CALLING</b>	<b>ADDRESS</b>	<b>PHONE NUMBER AND EXTENSION</b>
<b>PERSON CALLED</b>	<b>OFFICE</b>	<b>PHONE NUMBER AND EXTENSION</b>
<b>OUTGOING CALL</b>		
<b>PERSON CALLING</b>  Jennifer James	<b>ADDRESS</b>  CELMS-PM-M	<b>PHONE NUMBER AND EXTENSION</b>  314-331-8053
<b>PERSON CALLED</b>  Cindy	<b>OFFICE</b>  Sun-Journal Newspaper	<b>PHONE NUMBER AND EXTENSION</b>  919-638-8101

**SUMMARY OF CONVERSATION:**

I contacted the newspaper at 10:15 to see if there was any way to track down the article that Mr. Green had referred to (see phone conversation). I was referred to Cindy in the news room who works with Sunday Features. Cindy had no recollection of the article, but she had only worked there for not quite two years. She spoke with her editor to see if perhaps he could place the article but with no avail. She also commented that the other news reporter was also fairly new and had only been on staff for two and a half years. She said the only way to track the article since no one could recall writing it was to go to the city library and find it on the microfilm. I responded that this could be a very time consuming operation. She made comment that if it was a Sunday feature it might not be that bad. I thanked her for her input.

**TELEPHONE OR VERBAL CONVERSATION RECORD**

DATE: 9 March 1995

For use of this form, see AR340-15; the proponent agency is the Adjutant General's Office.

<b>SUBJECT OF CONVERSATION</b>  Camp Battle		
<b>INCOMING CALL</b>		
<b>PERSON CALLING</b>	<b>ADDRESS</b>	<b>PHONE NUMBER AND EXTENSION</b>
<b>PERSON CALLED</b>	<b>OFFICE</b>	<b>PHONE NUMBER AND EXTENSION</b>
<b>OUTGOING CALL</b>		
<b>PERSON CALLING</b>  Jennifer James	<b>ADDRESS</b>  CELMS-PM-M	<b>PHONE NUMBER AND EXTENSION</b>  314-331-8053
<b>PERSON CALLED</b>  Mr. Sakula	<b>OFFICE</b>  City of New Bern Planning Division	<b>PHONE NUMBER AND EXTENSION</b>  919-636-4077

**SUMMARY OF CONVERSATION:**

I contacted Mr. Sakula to ask for suggestions on information concerning Camp Battle at 12:40. Mr. Sakula suggested calling Vicky Johnson at the City Clerk's Office 919-636-4001 and asking her to check the minutes from 1941 of the Board of Alderman. He said if the city leased the property to the War Department that the minutes would reflect this and give possible leads to other documentation.

I questioned Mr. Sakula on the rumor of dumping of small arms ammunition into the Neuse River during this time frame. He responded that he had not heard of such rumors. He suggested talking to Mr. Roger Hackman 919-636-4007, who is the grounds keeper for Glenburnie Park, and a Mr. Rick Dove 919-637-7972, who is the manager for the Neuse River Keeper Program for the Neuse River Foundation. He explained that the foundation is a non-profit organization that monitors the pollutants that are put in the river.

Mr. Sakula also made comment on how many older generation people have told him about the park previous to when it was a World War II defense site. He said that the land was used as a park and fair grounds prior to it being Camp Battle. The park and fair grounds was in the victorian fashion with a small horse racing track for the locals and other set-ups for activities popular during that time frame. I thanked Mr. Sakula for all of his valuable information.

**TELEPHONE OR VERBAL CONVERSATION RECORD**

DATE: 9 March 1995

For use of this form, see AR340-15; the proponent agency is the Adjutant General's Office.

<b>SUBJECT OF CONVERSATION</b>  Camp Battle		
<b>INCOMING CALL</b>		
<b>PERSON CALLING</b>	<b>ADDRESS</b>	<b>PHONE NUMBER AND EXTENSION</b>
<b>PERSON CALLED</b>	<b>OFFICE</b>	<b>PHONE NUMBER AND EXTENSION</b>
<b>OUTGOING CALL</b>		
<b>PERSON CALLING</b>  Jennifer James	<b>ADDRESS</b>  CELMS-PM-M	<b>PHONE NUMBER AND EXTENSION</b>  314-331-8053
<b>PERSON CALLED</b>  Vicky Johnson	<b>OFFICE</b>  City Clerk	<b>PHONE NUMBER AND EXTENSION</b>  919-636-4001

**SUMMARY OF CONVERSATION:**

I contacted Mrs. Johnson at 1:00 to ask about the possibility of a records search through the minutes of the Board of Alderman meetings during the 1941 time period. I explained that we were looking for the leasing of property to the War Department. She replied that she could do the search for us but that it would be a couple of days. I suggested that we contact her next week when we are in New Bern to see if she found any information. She said that would be fine. The City Building is located 300 Pollock Street and is the only building downtown that has a clock tower on it. She said to call first to see if she had found anything. I closed the conversation with the promise to call her next week.

**TELEPHONE OR VERBAL CONVERSATION RECORD**

DATE: 9 March 1995

For use of this form, see AR340-15; the proponent agency is the Adjutant General's Office.

SUBJECT OF CONVERSATION		
Camp Battle		
INCOMING CALL		
PERSON CALLING	ADDRESS	PHONE NUMBER AND EXTENSION
PERSON CALLED	OFFICE	PHONE NUMBER AND EXTENSION
OUTGOING CALL		
PERSON CALLING	ADDRESS	PHONE NUMBER AND EXTENSION
Jennifer James	CELMS-PM-M	314-331-8053
PERSON CALLED	OFFICE	PHONE NUMBER AND EXTENSION
Mr. Danny Kuntz Maintenance Supervisor	Parks and Recreation	919-636-4007

**SUMMARY OF CONVERSATION:**

Contacted the maintenance building at approximately 1:15 and asked to speak with Mr. Roger Hackman. Mr. Hackman was not available and I was referred to the park maintenance supervisor Mr. Danny Kuntz.

I asked Mr. Kuntz if he had ever heard of any rumors of small arms ammunition being dumped into the Neuse River when the park was being used by the War Department. He replied that he had never heard any rumors to the effect of ammunition being dumped into the river but had heard rumors of "things being buried" in the park when it was a prisoner of war camp. I then asked Mr. Kuntz if there had ever been any hazardous material discovered on the property, and he responded "not to his knowledge". Mr. Kuntz also made comment that there had been no excavation in the park for building purposes, etc. during his time of employment there.

I thanked Mr. Kuntz and told him we would be visiting the park next week. He said to call back if we had anymore questions.

**TELEPHONE OR VERBAL CONVERSATION RECORD**

DATE: 9 March 1995

For use of this form, see AR340-15; the proponent agency is the Adjutant General's Office.

SUBJECT OF CONVERSATION  Camp Battle		
INCOMING CALL		
PERSON CALLING	ADDRESS	PHONE NUMBER AND EXTENSION
PERSON CALLED	OFFICE	PHONE NUMBER AND EXTENSION
OUTGOING CALL		
PERSON CALLING  Jennifer James	ADDRESS  CELMS-PM-M	PHONE NUMBER AND EXTENSION  314-331-8053
PERSON CALLED  Dispatcher	OFFICE  Craven County Sheriff's Department	PHONE NUMBER AND EXTENSION  919-636-6620

**SUMMARY OF CONVERSATION:**

I contacted the Craven County Sheriff's Records Department at 2:15 to enquire about records concerning calls for unexploded ordnance, explosives, or ammunition being reported. The dispatcher explained that if the area of concern is the Glenburnie Park vicinity that this property is in the New Bern city limits, therefore being the responsibility of the local police department to respond to the call. She explained that according to her memory the only call that the sheriff's department had along this line was a call from a residential home outside of the city limits a few years ago.

**TELEPHONE OR VERBAL CONVERSATION RECORD**

DATE: 10 March 1995

For use of this form, see AR340-15; the proponent agency is the Adjutant General's Office.

SUBJECT OF CONVERSATION		
Camp Battle		
INCOMING CALL		
PERSON CALLING	ADDRESS	PHONE NUMBER AND EXTENSION
PERSON CALLED	OFFICE	PHONE NUMBER AND EXTENSION
OUTGOING CALL		
PERSON CALLING	ADDRESS	PHONE NUMBER AND EXTENSION
Jennifer James	CELMS-PM-M	314-331-8053
PERSON CALLED	OFFICE	PHONE NUMBER AND EXTENSION
Captain McAlexander	New Bern Police Department	919-636-4113

**SUMMARY OF CONVERSATION:**

I contacted Captain McAlexander at 8:30-8:40 to question him on the police department responding to incidents of unexploded ordnance in the vicinity of Glenburnie Park. Captain McAlexander has been in the New Bern Police Department for seventeen years and handles all ordnance cases.

The captain is familiar with the area that was Camp Battle. He stated that there has been no incidents of unexploded ordnance in that area. He verified this with a colleague who is a 25 year veteran of the police force. I enquired about rumors of river dumping of small arms and he replied that he had not heard of any rumors of that nature. He mentioned that the river was at least a mile wide in this area, and if dumping occurred it would cover a wide territory. He also made comment that New Bern was the site for a large civil war battle in 1863, and that civil war battle searchers hunt the area constantly looking for relics. If anything was to be found they would have turned it up.

Captain McAlexander made mention that the only rumors he has heard repeatedly concerns the old National Guard Armory. The police station now occupies the building where the National Guard Armory used to be. The building was constructed in 1934 by the WPA. An Army National Guard Artillery Unit used the armory until sometime early in the 1960's when it was changed over to a Military Police Unit. The police department then moved into the building after the National Guard Unit was deactivated. Captain McAlexander said there are repeated rumors that the artillery folks buried 155mm shells in the back, but he has not had his men go out and check the area with a magnetometer or metal detector. (He made a joke about he doesn't really want to know if they buried anything out there).

The captain explained that the ordnance they get calls on in the New Bern area is civil war ordnance, and that they get two to three calls a year for people discovering cannon balls in their gardens, etc. The Cherry Point Marine Corps EOD people handle transportation and destruction of any discovered ordnance. He said the only "modern" type munitions ever discovered in New Bern was a Mark II hand grenade two years ago. A local resident's dog dug it up out of his yard. Investigations revealed that a returning Korean

War marine bought the home in 1954 and lived there while stationed at Cherry Point until 1956. The police department concluded that this was one of the soldier's souvenirs that he probably decided later he didn't need. Elderly neighbors confirmed that the marine had collected many types of ordnance and had showed many of them to the neighbors. Captain McAlexander emphasized that the location of this residence is not anywhere close to the Glenburnie Park, but that this is his favorite ordnance story!

The captain stated that he was going to ask around to some of the civil war battle hunters to see if they had found anything of significance. He will not be in New Bern when we will be there for our site visit, but we are to call his secretary Linda and he will leave a message with her if he discovers anything. I thanked the captain for his time, and that I enjoyed talking with him.

FOLLOW-UP 20 MARCH 1995

I contacted Linda at the police department to see if any messages had been left by Captain McAlexander at 14:15. Linda stated that she had not received anything from the captain verbally or written about finding anything pertaining to Camp Battle.



**TELEPHONE OR VERBAL CONVERSATION RECORD**

DATE: March 13, 1995

For use of this form, see AR340-15; the proponent agency is the Adjutant General's Office.

<b>SUBJECT OF CONVERSATION</b>  Camp Battle		
<b>INCOMING CALL</b>		
<b>PERSON CALLING</b>	<b>ADDRESS</b>	<b>PHONE NUMBER AND EXTENSION</b>
<b>PERSON CALLED</b>	<b>OFFICE</b>	<b>PHONE NUMBER AND EXTENSION</b>
<b>OUTGOING CALL</b>		
<b>PERSON CALLING</b>  Jennifer James	<b>ADDRESS</b>  CELMS-PM-M	<b>PHONE NUMBER AND EXTENSION</b>  314-331-8053
<b>PERSON CALLED</b>  Mr. Victor Jones	<b>OFFICE</b>  New Bern Craven County Public Library	<b>PHONE NUMBER AND EXTENSION</b>  919-638-7800

**SUMMARY OF CONVERSATION:**

Called the library at 10:00 to enquire about using the microfilm for the New Bern Sun-Journal Newspaper to locate the article referred in Mr. Green's telephone conversation. Mr. Jones informed me that each month is one reel of microfilm, so to review two years worth would be 24 reels. He stated it would be faster since we would be looking for just Sunday Features, but it would take a little time.

Mr. Jones volunteered to look in the "vertical files" for the article. I explained the subject of the article, and he replied that it was very possible that it could have been clipped for the files. He is going to do a search of the files for us and we are to call him or drop by to find out what the results are.

Mr. Jones is located in the "North Carolina Room" at the library which is located at 400 Johnson Street in New Bern.

**FOLLOW-UP 20 MARCH 1995**

Contacted Mr. Jones at 13:30 to be assured that he had not located anything out of the vertical files that we missed while on the site visit to Camp Battle. Mr. Jones was not available at the library when we were at New Bern. Mr. Jones commented that he had not run across anything on his search and was terribly sorry he could not be of further help. He took our mailing address and said that if anything comes up he will mail a copy to us.

**TELEPHONE OR VERBAL CONVERSATION RECORD**

DATE: March 13, 1995

For use of this form, see AR340-15; the proponent agency is the Adjutant General's Office.

<b>SUBJECT OF CONVERSATION</b>  Camp Battle		
<b>INCOMING CALL</b>		
<b>PERSON CALLING</b>	<b>ADDRESS</b>	<b>PHONE NUMBER AND EXTENSION</b>
<b>PERSON CALLED</b>	<b>OFFICE</b>	<b>PHONE NUMBER AND EXTENSION</b>
<b>OUTGOING CALL</b>		
<b>PERSON CALLING</b>  Jennifer James	<b>ADDRESS</b>  CELMS-PM-M	<b>PHONE NUMBER AND EXTENSION</b>  314-331-8053
<b>PERSON CALLED</b>  Mr. Rick Dove River Keeper	<b>OFFICE</b>  Neuse River Foundation	<b>PHONE NUMBER AND EXTENSION</b>  919-447-8999

**SUMMARY OF CONVERSATION:**

I contacted Mr. Dove at 10:30-10:40 to consult him on whether or not he has had any reports or rumors of river dumping of ammunition from the former defense site of Camp Battle. Mr. Dove responded that he has not had any reports of ammunition being found in the river from the World War II era or heard any rumors of such.

Mr. Dove is a veteran and a former lawyer who now works for the Neuse River Foundation. The organization has 1,100 volunteers, some of which serve on what he called a "research committee". He is going to request that the research committee look into the rumor of small arms dumping off of what is now Glenburnie Park.

Unfortunately Mr. Dove is going to be in Washington D. C. when we will be in town for our site visit. He is going to assign us a point of contact from the foundation's research committee that will get back in touch with us later today.

Mr. Dove was very helpful and said that the organization will provide whatever we need, whether it be a boat, a guide, etc. to assist us. He closed the conversation saying I should hear from his volunteer today.

**FOLLOW-UP #1, 13 March 1995**

Mrs. Mary Ann Harrison, President of the Neuse River Foundation called at 13:30 to say she would be our point of contact if we needed anything while we were in the area. I informed her that we have lined up Mr. Green and Mr. Gorges to go to the site with us. She expressed to call if anything comes up. Her home phone is 919-636-2848, mobile phone is 919-514-9117. She expressed an interest in any conclusions we may come to.

**FOLLOW-UP #2, 22 March 1995**

Contacted Mr. Harrison (he is a member of the foundation and will relay information to Mrs. Harrison) at 14:50 to give him a brief rundown of our site visit. I explained to Mr. Harrison that we found no hard evidence of

ammunition dumping, only second hand information. I explained the process of coming to this conclusion through archival search, site visits, interviews, etc. I also stated that if there was dumping done that chances were great that it was small arms. Mr. Harrison thanked me for the call and said he would pass on this information to Mrs. Harrison.

**TELEPHONE OR VERBAL CONVERSATION RECORD**

DATE: March 13, 1995

For use of this form, see AR340-15; the proponent agency is the Adjutant General's Office.

<b>SUBJECT OF CONVERSATION</b>  Camp Battle		
<b>INCOMING CALL</b>		
<b>PERSON CALLING</b>	<b>ADDRESS</b>	<b>PHONE NUMBER AND EXTENSION</b>
<b>PERSON CALLED</b>	<b>OFFICE</b>	<b>PHONE NUMBER AND EXTENSION</b>
<b>OUTGOING CALL</b>		
<b>PERSON CALLING</b>  Hank Counts	<b>ADDRESS</b>  CELMS-PM-M	<b>PHONE NUMBER AND EXTENSION</b>  314-331-8762
<b>PERSON CALLED</b>  Mr. Will Gorges	<b>OFFICE</b>  Antique Store	<b>PHONE NUMBER AND EXTENSION</b>  919-636-3039

**SUMMARY OF CONVERSATION:**

Mr. Gorges was contacted by Hank Counts at approximately 13:00 to ask about the dumping of ammunition into the Neuse River during the closing of the former defense site of Camp Battle. Mr. Gorges is a long time resident of New Bern, owner of an antique store, curator of the New Bern Civil War Museum, and local artifact gatherer.

Mr. Gorges responded that he was shown by two former veterans of the camp exactly where they dumped the ammunition. These two sources are now deceased. Mr. Gorges volunteered to show us exactly where these sites were. He also stated that where they threw the ammunition in the Neuse is approximately 15 feet deep with probably several feet of silt. Mr. Gorges also mentioned that there has also been small arms recovered in the Glenburnie Park of which he can show us the location.

We are to contact Mr. Gorges by going to his antique store or giving him a call when we would like him to accompany us out to the site. The store is located at 2100 Trent Blvd. in New Bern.

**APPENDIX F**  
**NEWSPAPERS/JOURNALS**  
**NOT USED**

**APPENDIX G**

**PRESENT SITE PHOTOGRAPHS**



**Camp Battle** - Piers for dock at shoreline of the Neuse River. NOTE: planks are completely gone and southeast end of Marsh Island in left background.



**Camp Battle** - Typical foundations for former DoD buildings being used as a pad for picnic shelter in Glenburnie Park.



**Camp Battle** - Looking south from Glenburinie Park across the boat access ramp to the Neuse River toward the sewage treatment facility and maintenance yard.



**Camp Battle** - Glenburnie Park - typical current site use.



**APPENDIX H**  
**HISTORICAL MAPS/DRAWINGS**  
**NOT USED**

**APPENDIX I**

**REPORT DISTRIBUTION LIST**

Ordnance and Explosive Waste  
 Chemical Warfare Material  
 Archives Search Report  
 for the former  
 CAMP BATTLE  
 New Bern, North Carolina  
 Project Number - I04NC07900

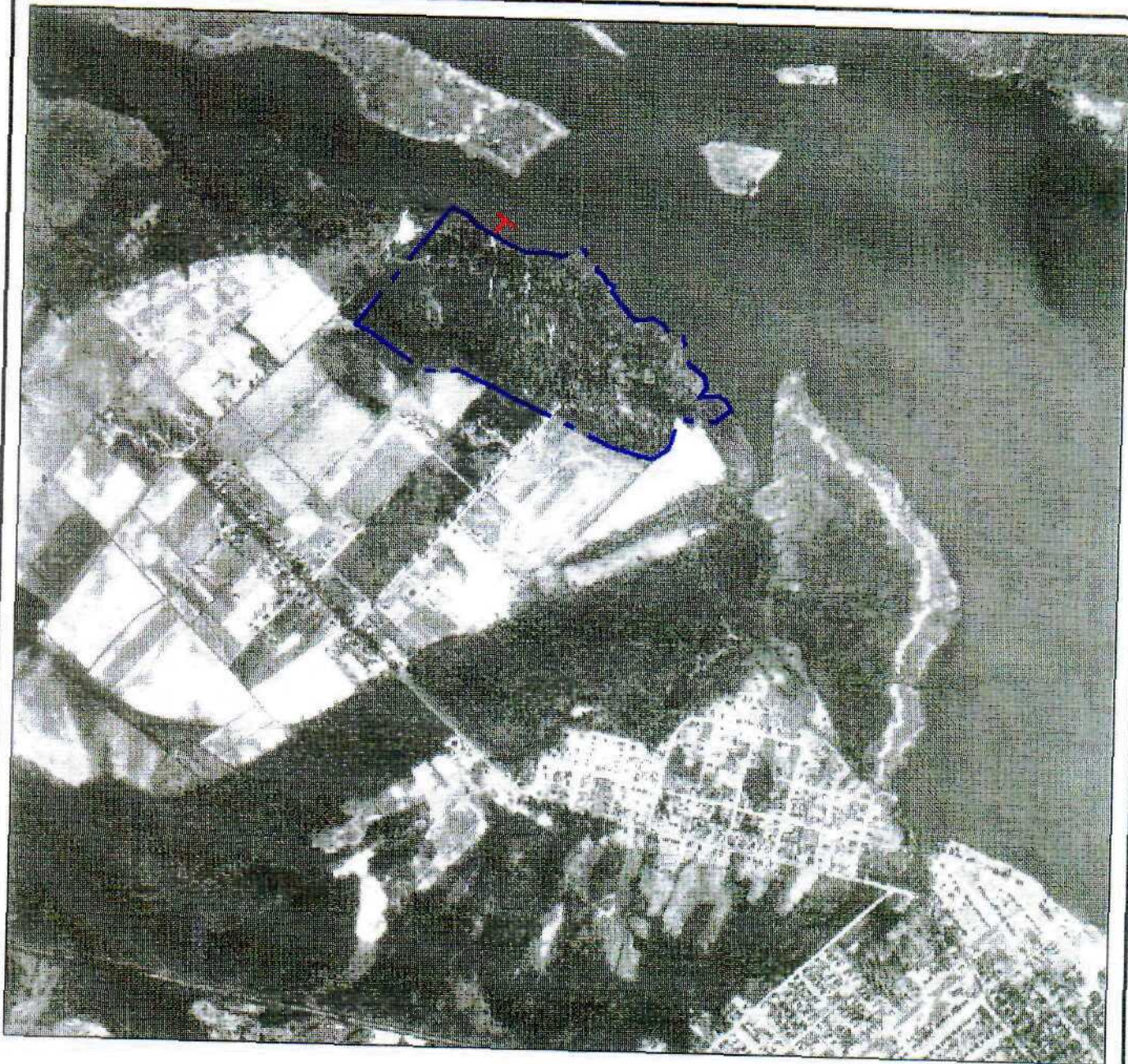
APPENDIX I

REPORT DISTRIBUTION LIST

<u>Addressee</u>	<u>No. Copies</u>
Commander, U.S. Army Engineer Division Huntsville, ATTN: CEHND-ED-SY P.O. Box 1600 Huntsville, Alabama 35807-4301	3
Commander, U.S. Chemical Material Destruction Agency ATTN: SFIL-NSM, Bldg. E4585 Aberdeen Proving Ground, Maryland 21010	1
Commander, U.S. Army Chemical & Biological Defense Command ATTN: AMSCB-CIH, BLdg. E5183 Aberdeen Proving Ground, MD 21010-5423	1
U.S. Army Technical Center for Explosives Safety ATTN: SMCAC-ESM Savanna, IL 61074-9639	1
Commander, U.S. Army Engineer District, Wilmington ATTN: CESA P.O. Box 1890 Wilmington, NC 28402-1890	1
CELMS-ED-G	1
-ED-H	1
-PD	1
-PM-M	1

## **PLATES**





# LEGEND

—

GLENBURNIE PARK  
(CAMP BATTLE) BOUNDARY



LOCATION OF FORMER DOCK  
(PIERS ARE STILL PRESENT)



## PLATE I

CAMP BATTLE  
NEW BERN, NORTH CAROLINA  
CRAVEN COUNTY  
DERP-FUDS #104NC079000  
AERIAL PHOTOGRAPH - 1955

NOT TO SCALE

PROJECT DATE: MARCH 1995

DATE OF PHOTO: 1955

04-MAY-1995 14:08

/N/GEW95AB/C26/PHOTO/CMPB5500.DGN & CMPB55A.EXT