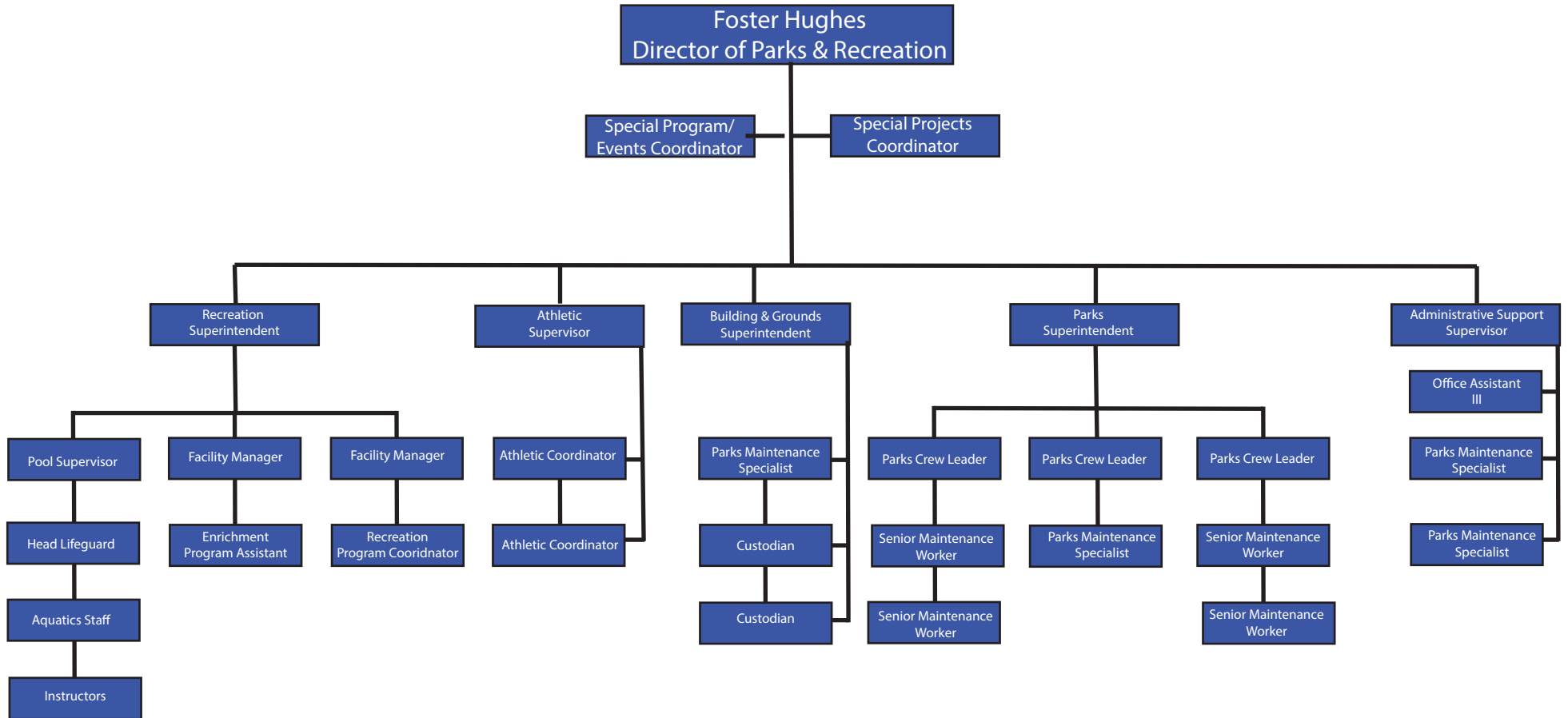


# NEW BERN PARKS & RECREATION ORGANIZATION CHART



There are 3 divisions in Parks and Recreation: Administration, Facilities, Parks. Administration includes Athletics and Cemetery Services and Special Events. Facilities includes Aquatics, and indoor facilities. Parks includes Green space, parks and public trees. All division support each another for activity, program and event support.

Leadership Team - The following staff are included in the membership team: Director of Parks and Recreation, Special Program & Events Coordinator, Special Projects Coordinator, Recreation Superintendent, Athletic Supervisor, Building & Grounds Superintendent, Parks Superintendent, and Administrative Support Supervisor.