

# CITY OF NEW BERN STANLEY WHITE COMMUNITY RECREATION CENTER Advisory Committee Meeting

# OUR PROCESS



COMMUNITY ENGAGEMENT



PROGRAMMING



CONCEPTUAL DESIGN / SITE DESIGN AND MASTER PLANNING

# ENGAGEMENT FINDINGS – FOCUS GROUPS

- **Spaces / needs within the building:**
  - Room for education space
  - Great for families
  - Very excited about education component
  - Test kitchen – very important for demonstrations
  - Non-profits to come together to feed community
  - Enterprise/Business space to work with non-profits
  - Facility could be an emergency shelter (only if located at alternate location)
  - Food insecurity is a big issue currently. What was there in the 70s as opposed to the needs of today
  - State of the art, comprehensive recreation facility for the next 50 years.
    - Integration of technology is important
  - Potential of access to parts of building at later hours for rentals/community events

# ENGAGEMENT FINDINGS – FOCUS GROUPS

- **Outdoor spaces / needs:**
  - Kids garden/community garden at Henderson Park currently
  - Craven Terrace is walkable to community center current and proposed location
  - People in community want a water feature
  - Small amphitheater at Henderson Park
  - Stormwater as an education tool

# YOUTH FOCUS GROUP

**SPACE FOR EVERYONE TO COME TOGETHER AND  
EVERYONE DOES SOMETHING THEY ENJOY**

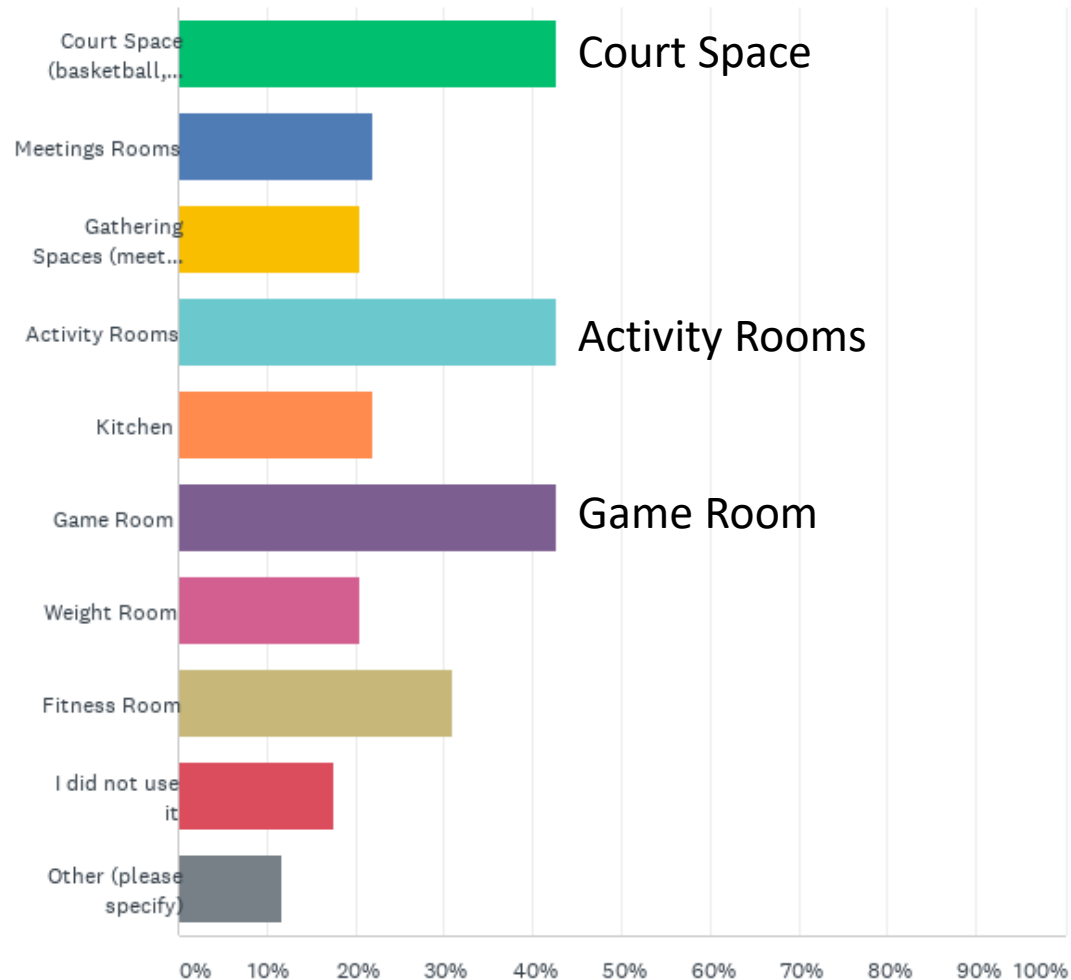
**EVERYONE CAN PLAY AND PARTICIPATE**

**EVERYONE TO GET ALONG WITH EACH OTHER**

- **What would you like to see?**
  - Art stations
  - Quiet study space
  - Art room
  - Updated kitchen (bigger and more counter)
  - Afterschool activity space
  - Work with friends
  - Space to hang out
- **What does your ideal afterschool space look like?**
  - Things to do with your hands
  - Team building
  - Tables and chairs
  - Private area for homework
  - Hands on activities (makerspace, legos, robotics, pool, board games)
- **Henderson Park Area**
  - All of the activities noted
  - Public pool
  - Bike park
  - Skate park

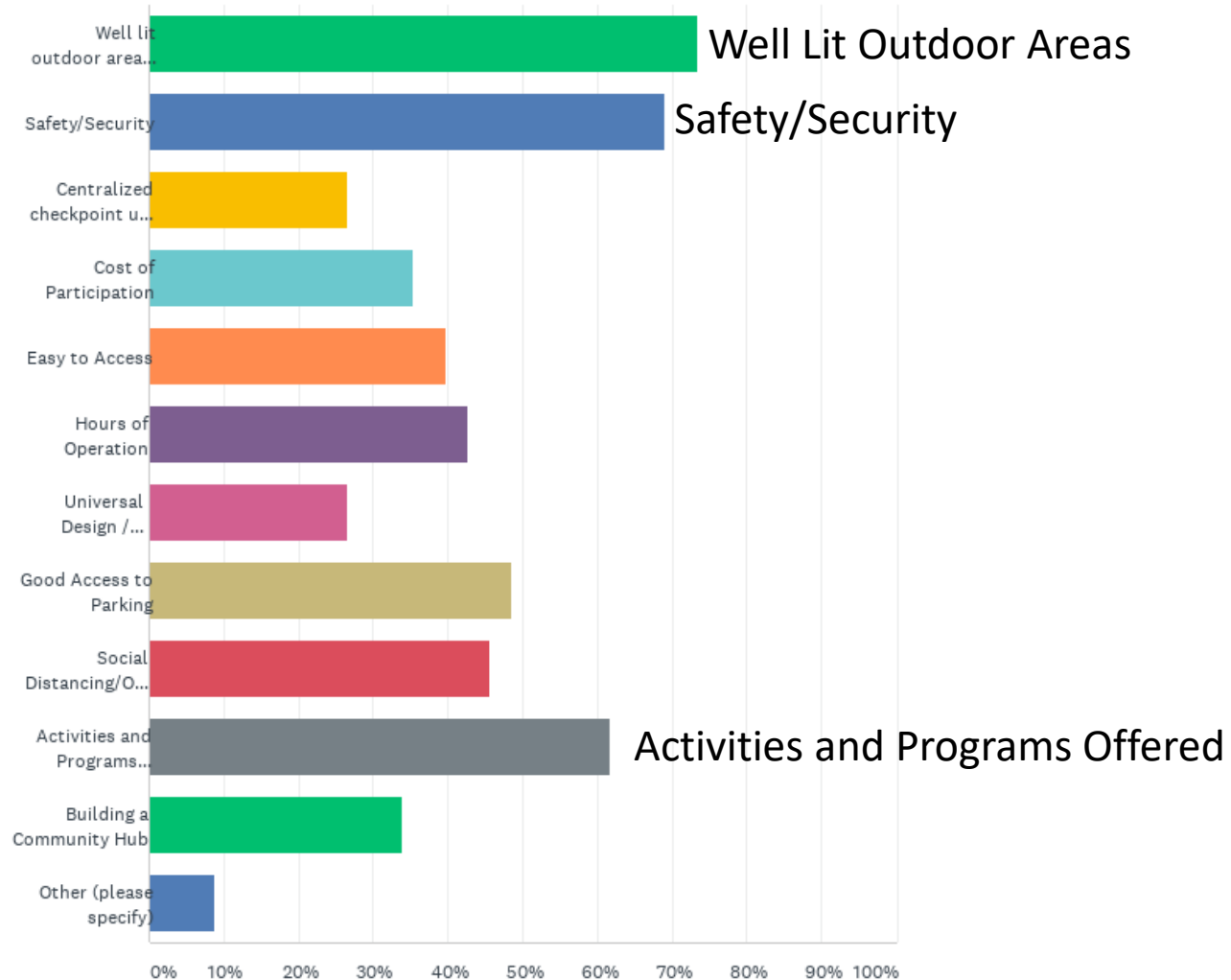
# ENGAGEMENT FINDINGS – SURVEY

Q6 What activities did you participate in/what spaces did you use while at the recreation center when it was still in use? (check all that apply)



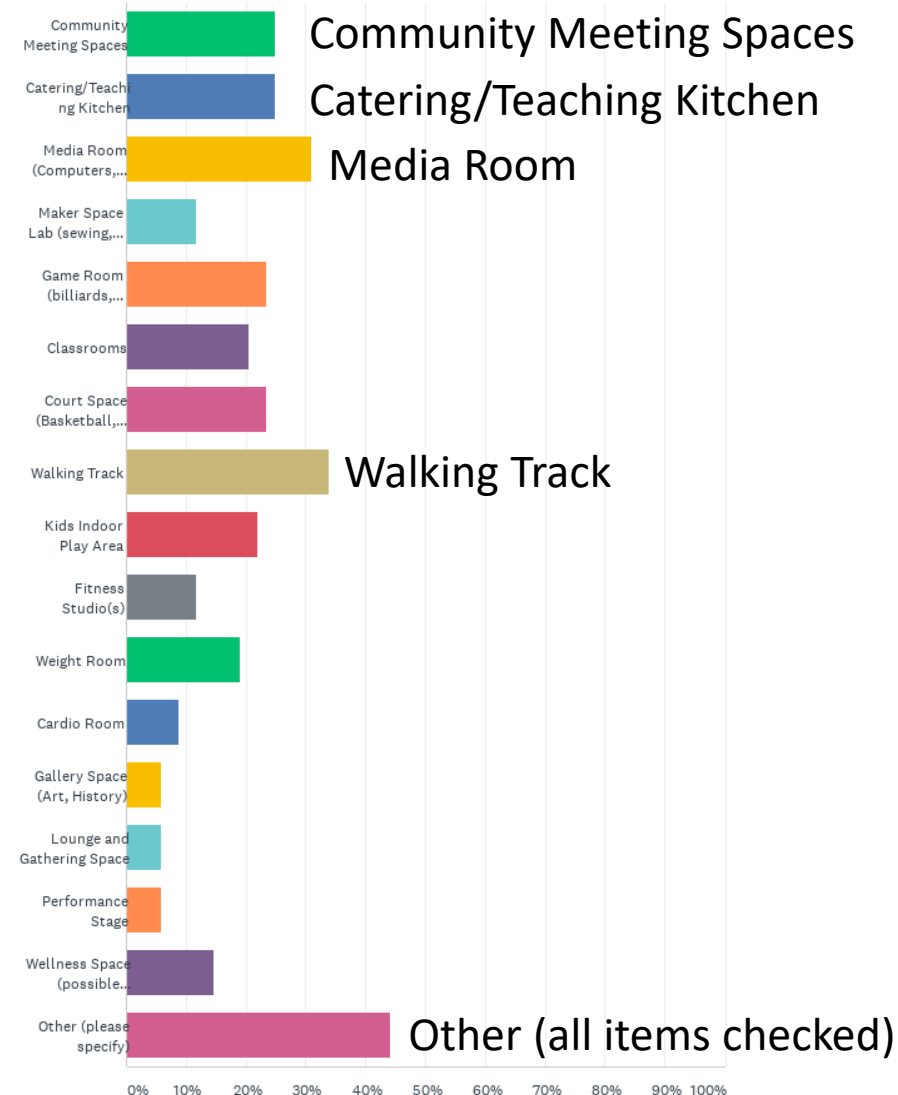
# ENGAGEMENT FINDINGS – SURVEY

Q10 Which of the following elements are important to you in the design of the Stanley White Recreation Center? (Choose all that apply)



# ENGAGEMENT FINDINGS – SURVEY

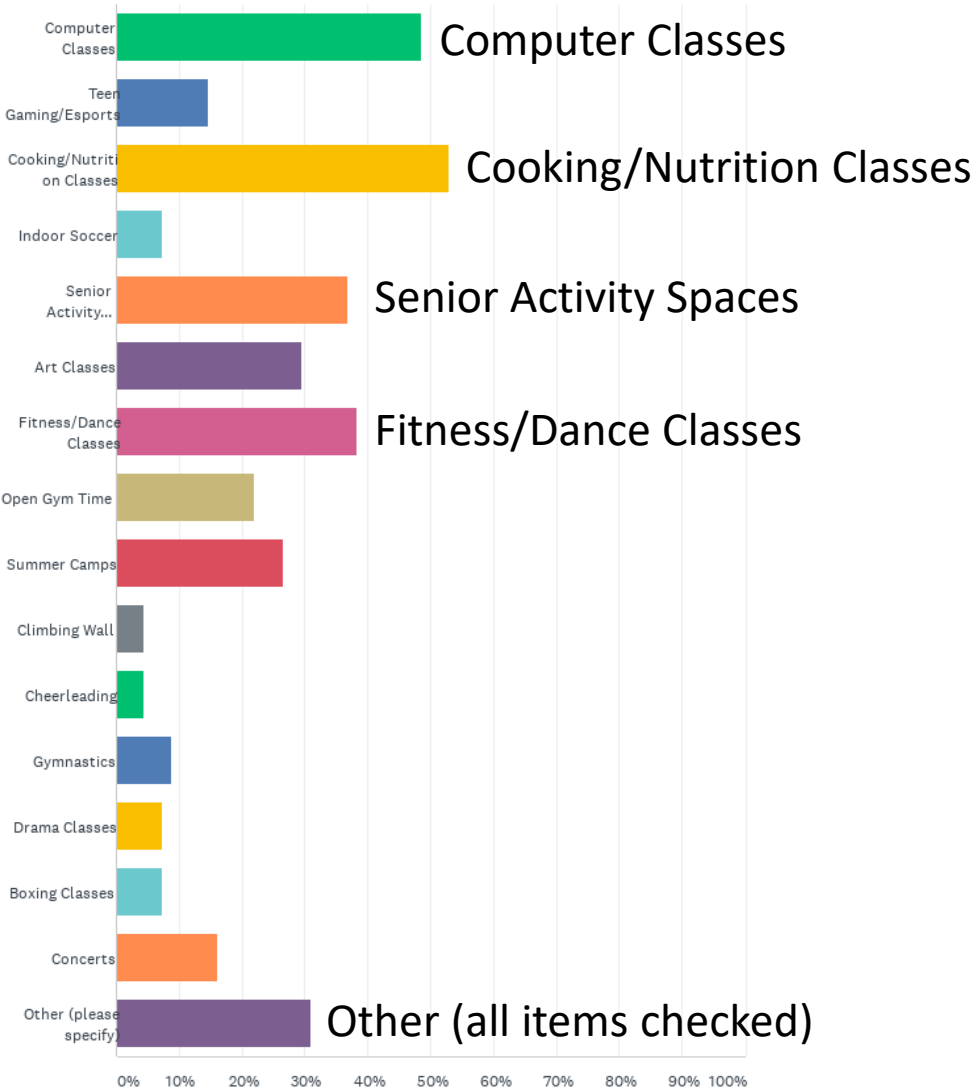
Q8 What spaces would you like to see in a new recreation center? (Choose your top 5 options)





# ENGAGEMENT FINDINGS – SURVEY

Q9 What programs and activities would you participate in at a new recreation center? (Choose your top 5 options)



# ENVIRONMENTAL ASSESSMENT UPDATE

- **Environmental Assessment Update**
  - Summary of Engagement
  - Schedule

# PROGRAMMING

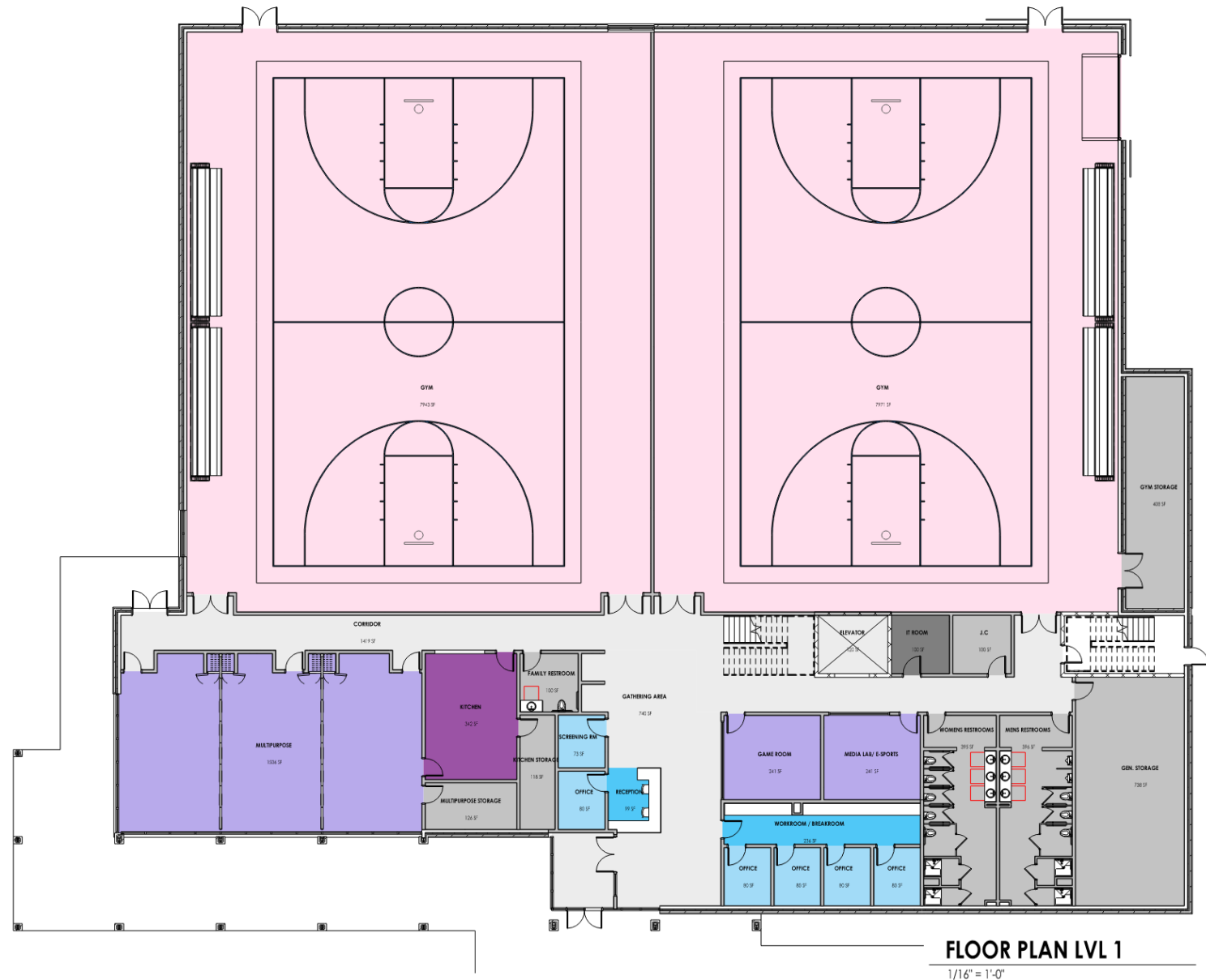
Room/Area	Occup	Unit	NSF	Total NSF	Space Driver	Comments	Adjacency
1.0 Building Spaces							
Vestibule		1	100	100	Variable		
Lobby		1	200	200	Variable	History Wall	
Staff Support Spaces							
Reception	2	1	100	100	Variable	1 person at reception - colocated or separate from admin	Gym and Entry
Staff Offices	5	5	80	400	Fixed	Individual	
Staff Workroom	1	1	100	100	Variable	Print area, etc., cabinets, office supply storage only	
Staff Breakroom	1	1	60	60	Variable	Kitchenette, sink, microwave, refrigerator, countertop	
Support Spaces							
Family Restroom		2	100	200	Fixed	Shower, Tlt. - shower to be separate room inside toilet	Restrooms
Mens Restrooms		1	800	800	Variable	lockers and showers (2x gender?)	
Womens Restrooms		1	800	800	Variable	lockers and showers	
General Storage	1	1	650	650	Variable		
Elevator		2	120	240	Variable		
Electrical Room	2	1	100	100	Variable		
IT Closet	1	1	100	100	Fixed		
Janitor Closet	1	1	80	80	Variable		
Community Spaces							
Screening Room	1	1	80	80			
Media Lab/e-sports		1	240	240	Variable	15x20	
Game Room		1	240	240	Variable	Pool table, ping pong, card table, arcade game 15x20?	
						28x18, moveable partitions between the three rooms 6 ft tables 6 to a table = 150 people - counter with sink and cabinets in each room	
Multipurpose Room		3	500	1500	Variable	for tables and chairs	
Multipurpose Storage	1	1	125	125	Variable		open to Multi and lobby
Kitchen	2	1	340	340	Variable		
Kitchen/Concessions Storage	1	1	120	120	Variable		
Café/Open Lobby		1	500	500	Variable	Part of lobby area potentially, space for tables, chairs, nooks, quiet area?	
Subtotal Admin./Support				7,075			
Net-to-gross Factor				1.3			
Total				9,198		(Building Spaces)	

Athletic Spaces				
HS Court Gymnasium w/Seating		2	8000	16,000
Track		1	3600	0
Gym Storage	2	1	400	400
Weight/Cardio Room		1	3000	3000
Weight/Cardio Storage		1	100	100
Group Exercise Studio		1	600	600
Group Exercise Studio Storage	1	1	140	140
Subtotal				22
Net-to-gross Factor				1.15
Total				23,276

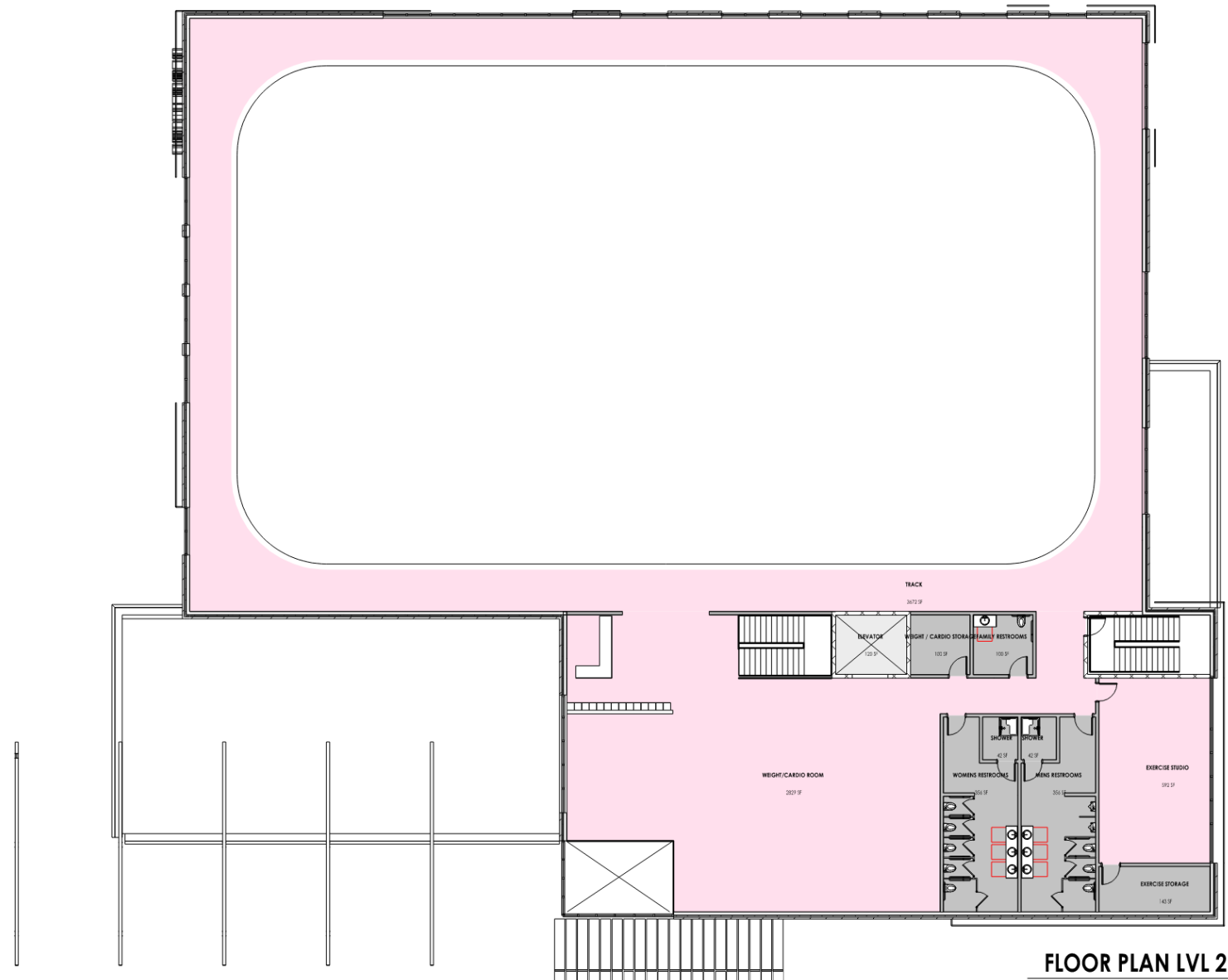
Variable	75' x 102', 2 cross courts @ 50'x44'. 2 V-ball competition courts (40'x60') & 2 practice (40'x55'). Moveable/Fixed bleacher seating. multipurpose floor	PEMB
Variable	Elevated, 3 lanes at 30" each around full perimeter of gym.	Around 1 court
Variable	At gym level, store rollaway stage here	
Variable	Bars/Mirrors - multipurpose floor? Zumba, dance, tai chi	
Variable		

TOTAL (w/o track)	32,474
Elevated Track	3,600
TOTAL with Track	36,074

# FLOOR PLAN



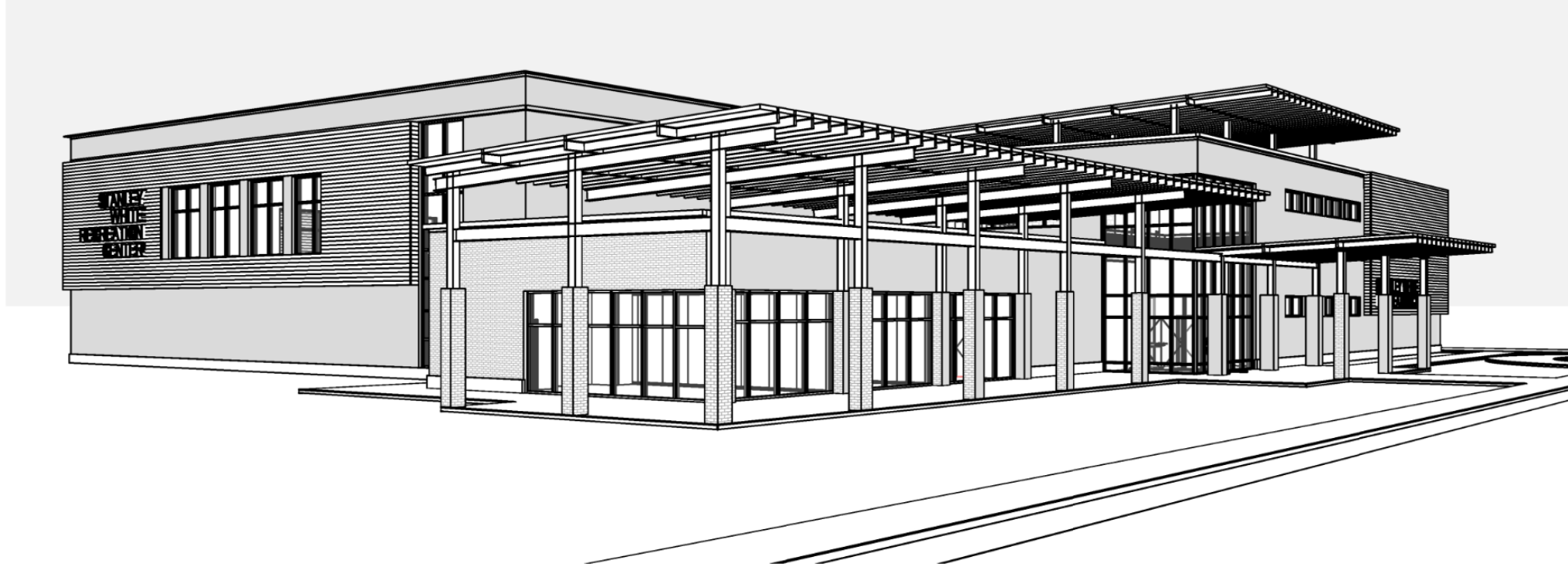
# FLOOR PLAN



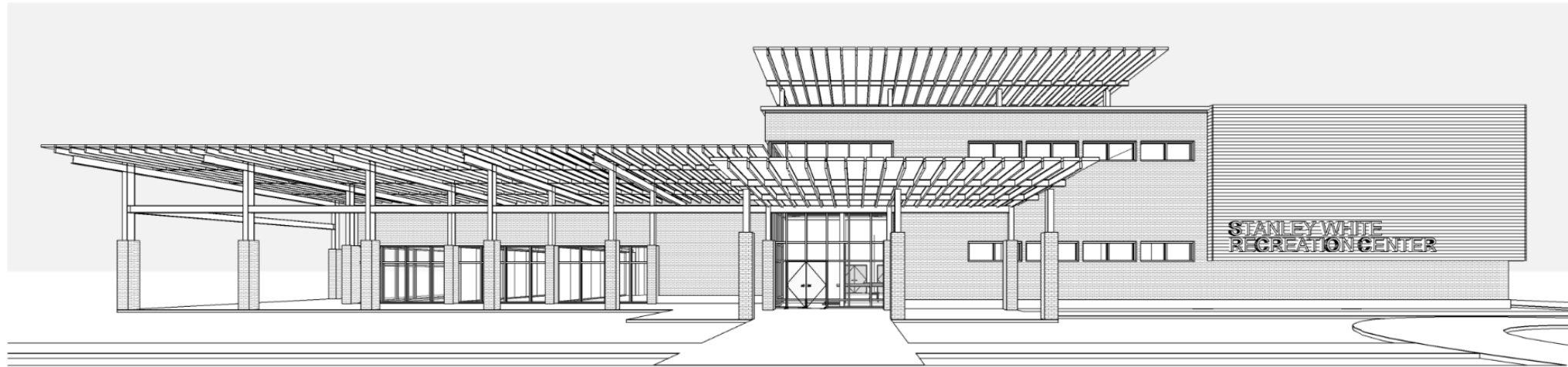
**FLOOR PLAN LVL 2**

1/16" = 1'-0"

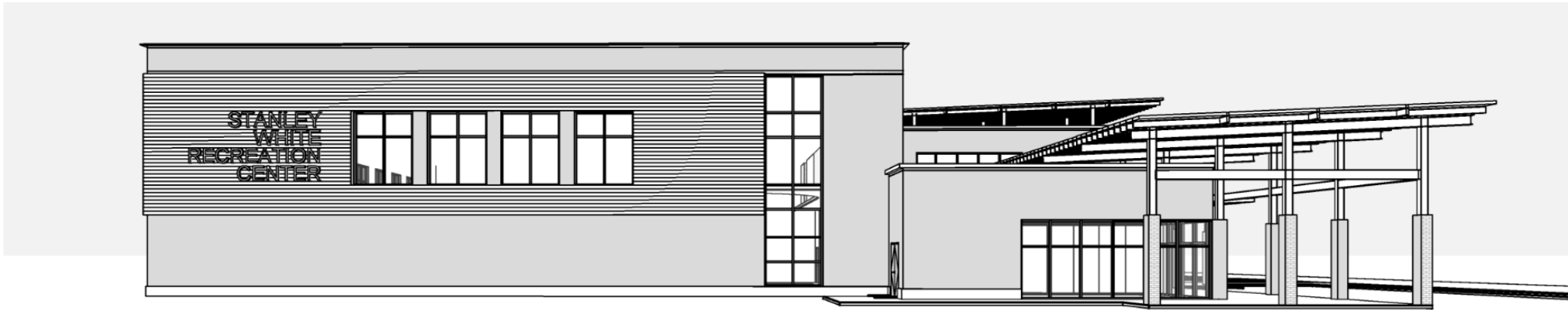
# CONCEPTUAL DESIGN



# CONCEPTUAL DESIGN



# CONCEPTUAL DESIGN





# 3<sup>RD</sup> AVENUE SITE DESIGN CONCEPT





# 3<sup>RD</sup> AVENUE SITE DESIGN CONCEPT



# YOUR FEEDBACK

