



WATER QUALITY PLANNING & PROTECTION

INTRODUCTION

Drinking water (source water) and wastewater are regulated by the [Environmental Protection Agency](#) (EPA) and the [Colorado Department of Public Health and Environment](#) (CDPHE). These regulations help protect both the environment and public health. Northglenn's drinking water originates in the Clear Creek Watershed. The Water Quality Coordinator works with upstream stakeholders to prevent pollution from entering Northglenn's source water.

After water is used in homes, it is piped to the [Wastewater Treatment Plant](#) for treatment prior to discharge into Big Dry Creek. Wastewater discharge is regulated through the CDPHE permitting process.

A rigorous water quality monitoring program for both watersheds identify pollutant sources, their potential impacts and guide protective projects.

MISSION

Proactive protection of our source water through collaborative efforts with upper Clear Creek entities by representing Northglenn on regulatory issues related to the [Clean Water Act](#).



WHAT WE DO

Striving to protect source water quality and meet wastewater permit requirements through:

- Collaboration
- Intergovernmental Agreements
- Memorandums of Understanding
- Participation in local, regional, & statewide Water Quality Organizations
- Legislative monitoring



COLLABORATION

Our neighboring cities of Westminster and Thornton share an interest in both the Clear Creek and Big Dry Creek watersheds. Northglenn partners with [Broomfield](#), [Thornton](#) and [Westminster](#) to sample and monitor water quality, share costs associated with environmental studies and work in a united manner on regulatory issues. Sharing duties related to monitoring and responding to water quality concerns maximizes staff time and costs efficiencies. It also creates a spirit of cooperation between cities that share a common desire to improve water quality. Staff also work with water and wastewater utilities in the Clear Creek watershed to protect water quality.



PARTNERSHIPS

- [Big Dry Creek Watershed Association](#)
- [Upper Clear Creek Watershed Association](#)
- [Colorado Water Quality Forum](#)
- [North Front Range Water Quality Planning Association](#)
- [Rocky Flats Stewardship Council](#)
- Standley Lake Water Quality IGA Committee
- Woman Creek Reservoir Authority
- [Colorado Watershed Wildfire Protection Group](#)
- [Colorado Monitoring Framework](#)

CONTACT INFORMATION

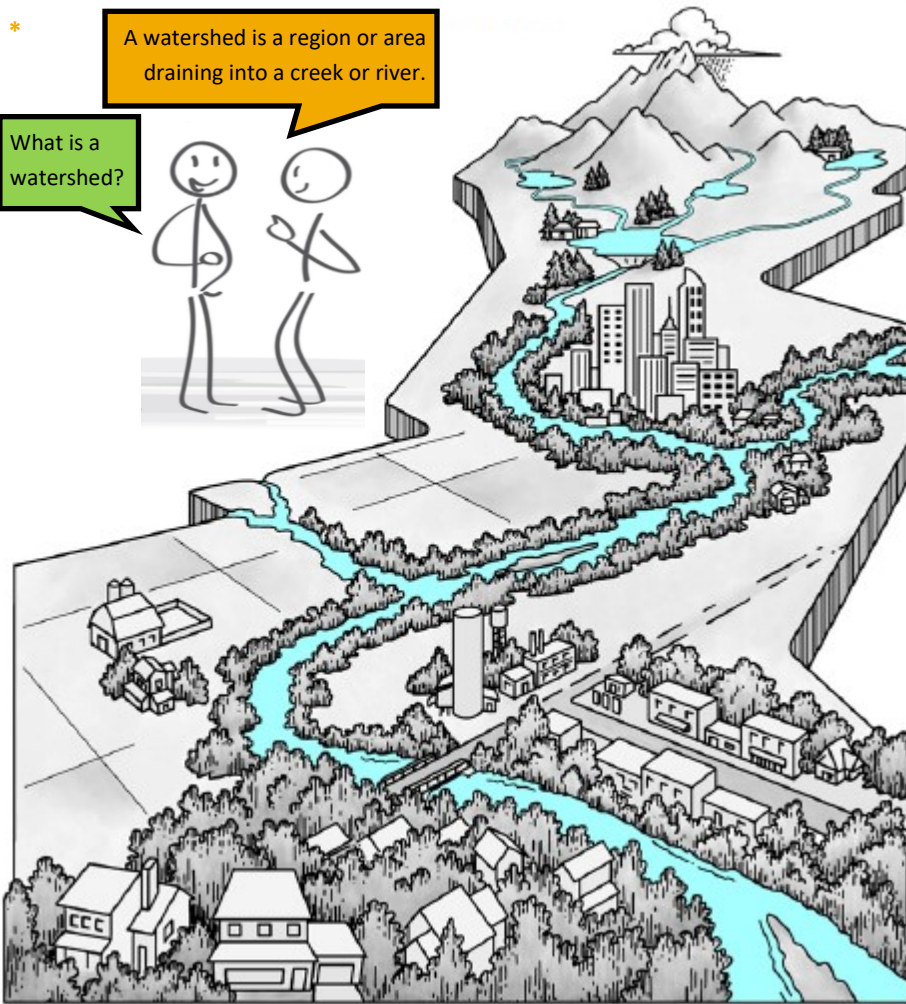
303.450.4067 **Shelley Stanley**, Water Quality Coordinator
303.450.4070 **Tamara Moon**, Environmental Manager

WATERSHED PROTECTION

*

A watershed is a region or area draining into a creek or river.

What is a watershed?



Our watershed consists of houses, businesses, farms and undeveloped land. As areas are developed, the loss of vegetation results in much more water runoff. The runoff water carries contaminants to our lakes and streams. Cleaning up polluted water is very difficult and expensive. Proactive pollution prevention is much easier and way less expensive.

Whew.. Those polluters out there should take better care of our water supply.



People assume businesses & farmers are the biggest contributors to polluting the water supply.

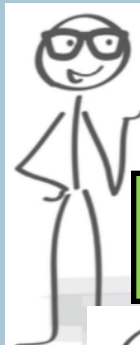
When in fact, people at home are more often the biggest polluters.

NO WAY!!!

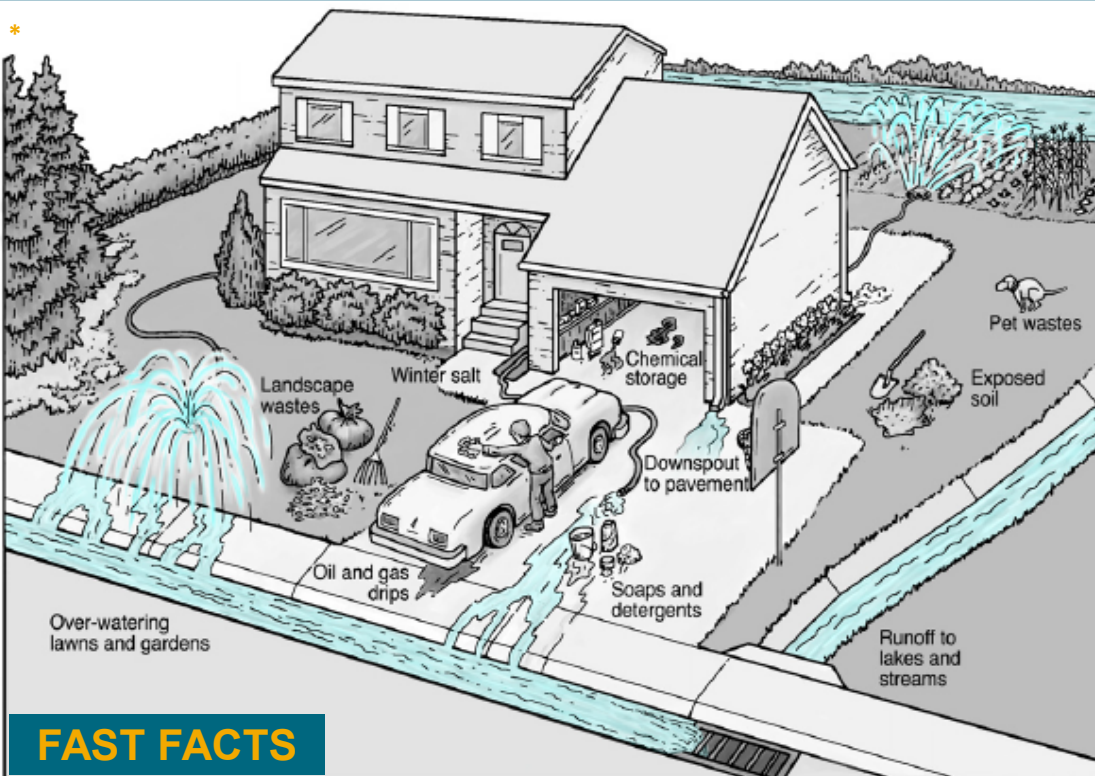
I'm not a polluter!

Take a look at an average home and see how pollution can be generated.

Wow! I had no idea. We will try harder to keep our water clean.



*



FAST FACTS

4 quarts of oil spilled from your car's engine can form an 8-acre oil slick bigger than a city block.

Home gardeners may use on average more fertilizer and pesticides per square foot than farmers do in their fields.