



## FENCE REGULATIONS

Fence regulations can be found in Section 11-4-7(l) of the City of Northglenn Unified Development Ordinance. A building permit is required for a fence or any screen not exclusively consisting of plant material more than 30 inches in height, or for any retaining wall more than 48 inches in height.

If a permit is required, please submit plans, drawn to scale, showing the proposed construction of the fence including:

1. Location (Site Plan)
2. Height
3. Material

### Location

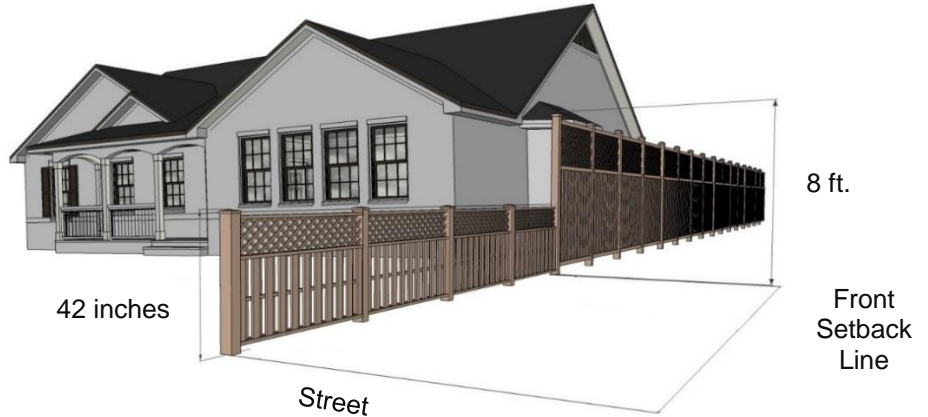
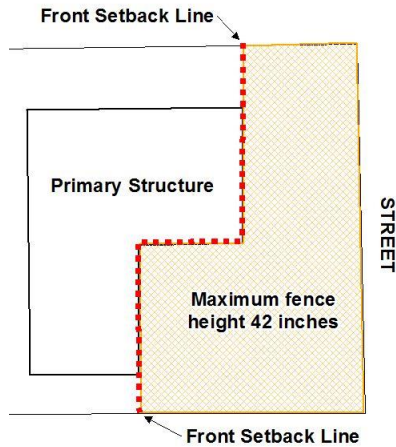
- It is highly recommended to work in cooperation with your neighbor for fences on a common property line prior to construction. It may be necessary to have your property surveyed by a licensed surveyor to identify and mark property lines to avoid disputes in the future.
- Fences cannot block public access to the water meter, generally located near the front sidewalk.

### Materials & Design

- Allowable materials include:
  - Natural stone
  - Brick
  - Stucco
  - Wood
  - Plastic and vinyl (if manufactured for the purpose of fencing)
  - Decorative concrete block
  - Metal (such as wrought iron)
  - Chain link (except along arterial roads).
- Prohibited materials include:
  - Chicken wire (if along property perimeter)
  - Chain link (on frontages facing an arterial road, see above)
  - Plywood
  - Corrugated metal
  - Barbed wire (unless approved by the Director)
  - Electrically charged fences (except in Agricultural zones)
- Front yard fences must be a minimum of 50% transparent (except in Industrial and Public Facilities zones), meaning spaces between fence panels must be at least the width of the panels themselves.
- Fences along arterial roads (if a City of Northglenn fence does not already exist) must be at least 6 ft. height and be a solid privacy fence. These roads are:
  - 120<sup>th</sup> Avenue
  - 112<sup>th</sup> Avenue (east of Washington Street and west of Huron Street)
  - 104<sup>th</sup> Avenue
  - Huron Street
  - Washington Street

## Height of Fences, Screens and Hedges

- Maximum Height of any fence or screen cannot exceed 8 ft. in the side or rear of a property.
- Maximum height of any fence or screen cannot exceed 42 inches in front yard area.

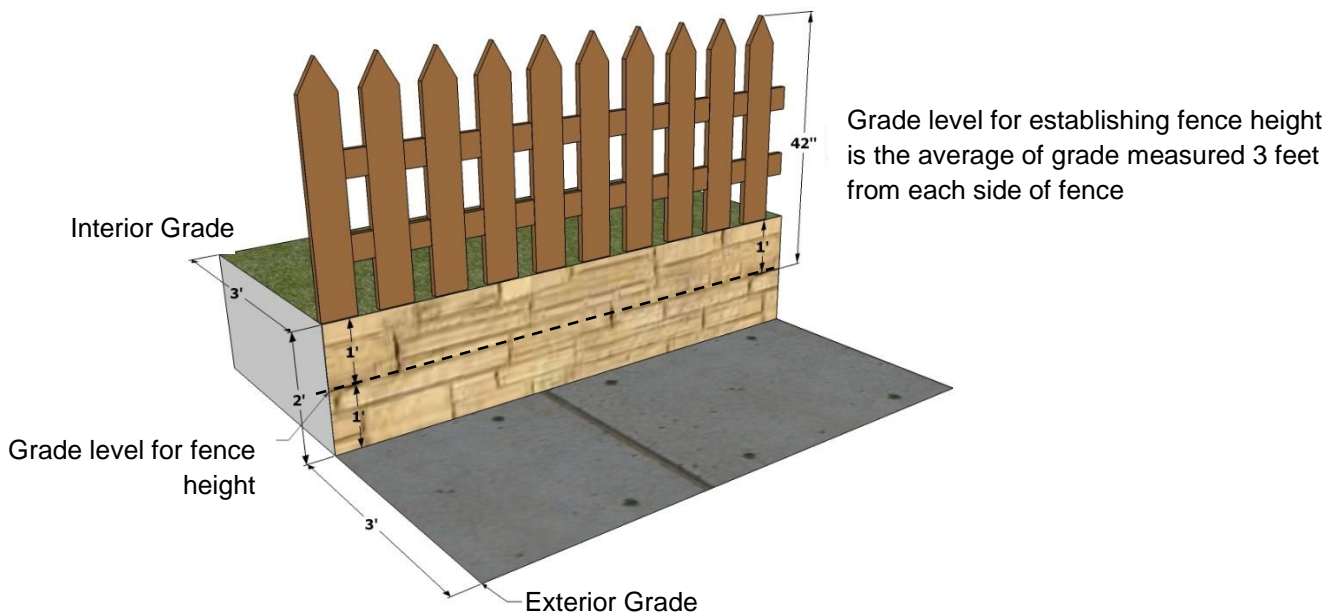


- Fences in excess of 30 inches on corner lots must adhere to vision triangle restrictions from the intersecting streets (residential driveways exempted).

Leg A Distance

		Leg A Distance			
		Driveway	Local	Collector	Arterial
		Leg B / Leg A	Leg B / Leg A	Leg B / Leg A	Leg B / Leg A
Leg B Distance	Driveway	15 feet / 15 feet	15 feet / 15 feet	15 feet / 35 feet	15 feet / 50 feet
	Local	15 feet / 15 feet	15 feet / 15 feet	15 feet / 35 feet	15 feet / 50 feet
	Collector	35 feet / 15 feet	35 feet / 15 feet	35 feet / 35 feet	35 feet / 50 feet
	Arterial	50 feet / 15 feet	50 feet / 15 feet	50 feet / 35 feet	50 feet / 50 feet

- For fences on a retaining wall or raised bed, the maximum height is measured from the average of the grade 3 ft. away from each side of the fence. Maximum height of retaining wall is 6 ft.





## **FENCE REGULATIONS**

### **ADDITIONAL REQUIREMENTS FOR MULTIFAMILY AND NON-RESIDENTIAL PROPERTIES**

#### **Commercial and Industrial Fences**

- Front yard fences are prohibited in commercial zone districts.
- Fences or screens up to 8 ft. in height are allowed in the front setback area in industrial zones when approved by the Planning Commission.

#### **Required Screening**

- All required screening must incorporate the primary materials and colors of the principal building of the site unless is provided by approved landscaping.
- Parking Areas
  - Parking areas of more than 6 spaces are required to protect adjacent residential uses. Minimum height is 6 ft. and can be provided as a privacy fence, landscaping, or a combination of both.
- Mechanical Equipment
  - Building support equipment such as air conditioning and heating devices require screening from abutting streets and properties.
  - Methods for screening equipment include landscaping or privacy fencing at ground level, or parapet or other architectural feature for roof-mounted equipment.
- Refuse Areas
  - Shall be screened by solid wall or fence at least 6 ft. in height and from all four sides with a gate or recessed opening.
  - These areas should be located where not visible from public streets or adjacent uses to the maximum extent practicable.
- Outdoor Storage
  - When adjacent to residential zones and uses, outside storage must be screened from view with a minimum 6 ft. privacy fence or screen.
  - Materials stored inside the fenced area should not protrude above the fence.
- Loading Areas
  - Loading activity area should be screened from view at ground level.