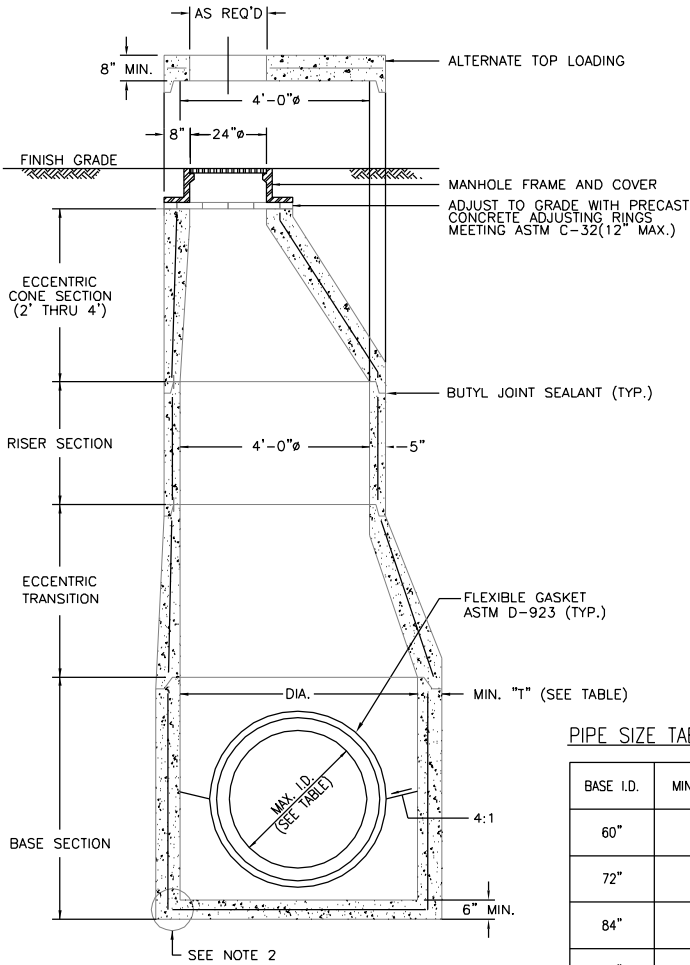


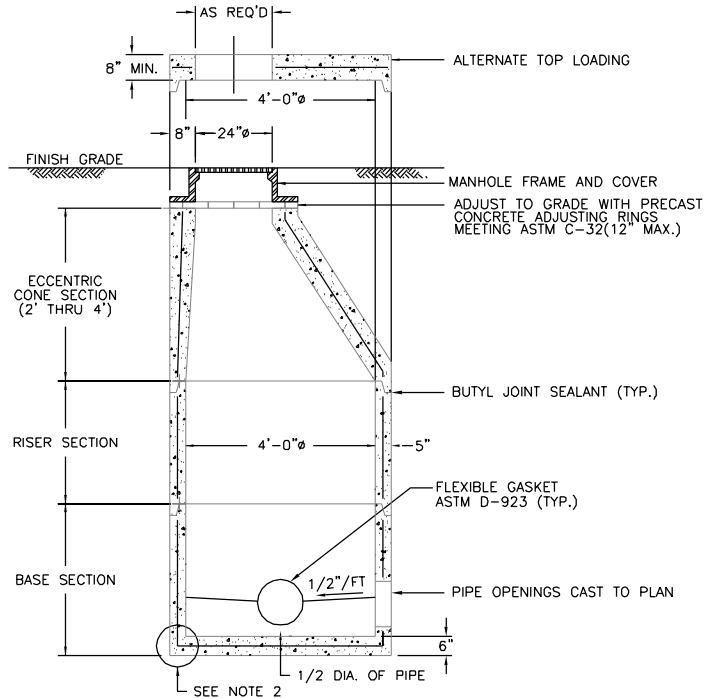
FOR STORM SEWER INLET
MANHOLES ONLY:

GRATE TO BE NOTED:
"DUMP NO WASTE, DRAINS
TO WATERWAYS"



60" TO 96" PRECAST BASE

SEE TABLE FOR MAX. PIPE SIZES



48" PRECAST BASE

PIPE SIZE TABLE

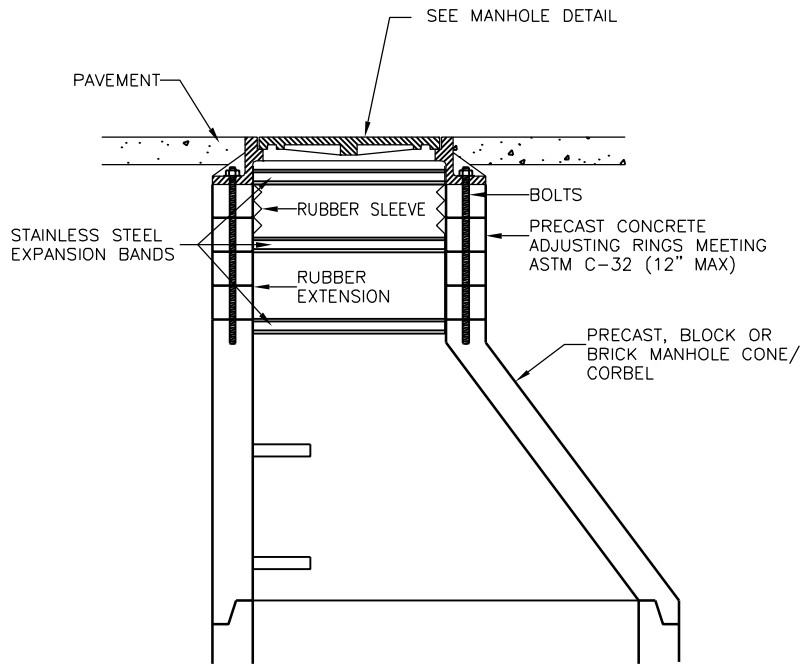
BASE I.D.	MIN. "T"	MAX. PIPE SIZE
60"	5"	36"
72"	6"	48"
84"	7"	54"
90"	7-1/2"	60"
96"	8"	60"

GENERAL NOTES:

1. ALL REINFORCING STEEL MUST CONFORM TO THE LATEST ASTM A185 AND/OR A615 GRADE 60, SPECIFICATION 0.12 SQ. IN./LINEAL FT.
2. STEEL REINFORCEMENT FOR BASE SECTION BOTTOM SHALL BE A MIN. OF 0.12 SQ. IN./LINEAL FT. (BOTH WAYS)
3. MANHOLE SPECS. CONFORM TO THE LATEST ASTM C478 SPEC. FOR "PRECAST REINFORCED CONCRETE MANHOLE SECTIONS". ALL PORTLAND CEMENT CONCRETE SHALL BE CLASS 3000 PSI, 3/4" AGGREGATE, TYPE II.
4. ONE POUR MONOLITHIC BASE SECTION.
5. ANY NECESSARY ADJUSTMENTS DURING CONSTRUCTION WILL BE DONE BY SAW-CUTTING AND/OR CORING ONLY. NO JACKHAMMERS, HAMMERS, CHISELS OR PNEUMATIC TOOLS WILL BE ALLOWED.
6. ALTERNATE SLAB IS STEEL REINFORCED TO MEET OR EXCEED H-25 LOADING.
7. MANHOLE FRAME AND COVER
STORM MANHOLE - EAST JORDAN IRON WORKS No. 1710A (VENTED) OR APPROVED EQUAL.
SANITARY MANHOLE - EAST JORDAN IRON WORKS No. 1710B (SOLID) OR APPROVED EQUAL.
8. ALL MANHOLE SECTION JOINTS SHALL CONFORM TO ASTM C443
9. ALL MANHOLES SHALL HAVE STEPS INSTALLED INTERNALLY IN ACCORDANCE WITH THE LATEST OSHA REQUIREMENTS.

PRECAST CONCRETE MANHOLE DETAILS

NOT TO SCALE



TO SPAN CHIMNEY HEIGHTS OF:

0 TO 4-1/2"	-	CHIMNEY SEAL ONLY
OVER 4-1/2" TO 9"	-	SEAL + 7" EXTENSION
OVER 9" TO 12"	-	SEAL + 10" EXTENSION
OVER 12"	-	SEAL + MULT. EXTENSION

SANITARY SEWER
INTERNAL MANHOLE CHIMNEY SEAL

NOT TO SCALE