



City of North Royalton

Mayor Larry Antoskiewicz

Community Map Guide

Thomas Jordan, Community Development Director

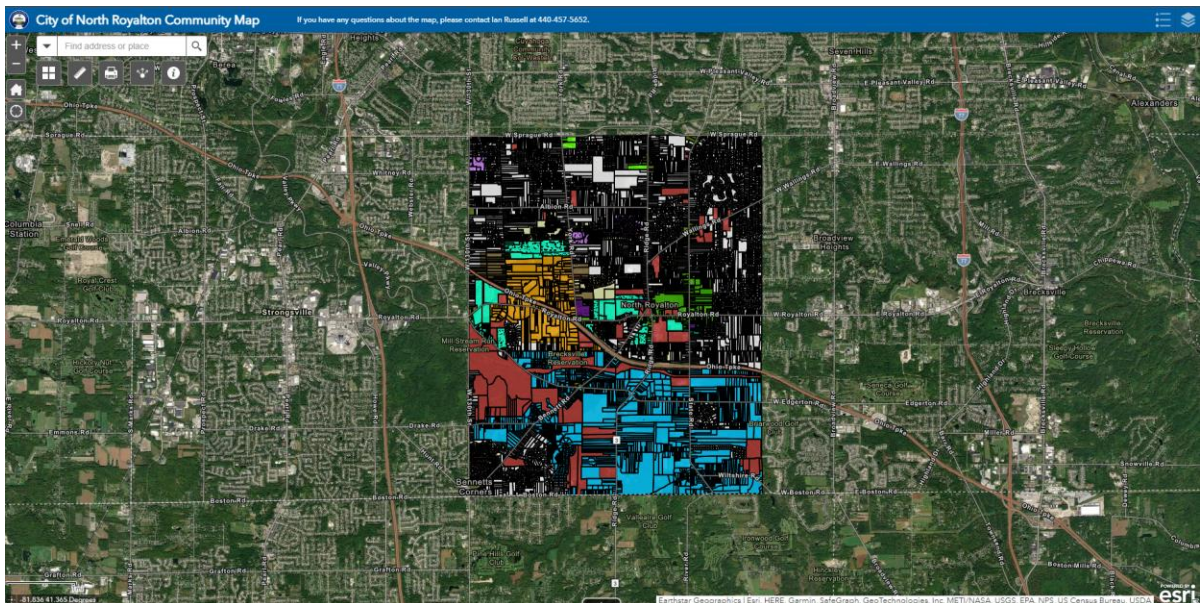
The City of North Royalton has launched its first iteration of a publicly accessible Geographic Information Systems (GIS) map that will allow you to quickly access and view important information related to property and zoning. This document is intended to serve as a guide for the system. We hope that it proves useful and, if you have any questions not addressed in this guide, please reach out to Ian Russell for further assistance. He can be reached at 440-457-5652 or via email at irussell@northroyalton.org.

Accessing the Online Map Viewer

1. The online map viewer can be accessed through the link provided in the “Maps Section” page of the City website under the Community and Economic Development Department Tab.
 - a. It can also be accessed by following this link:
<https://northroyalton.maps.arcgis.com/apps/webappviewer/index.html?id=05a6082fbc0b4a66a138ee7122156f88>
2. Once you click the link, the map will open on your computer, phone, or other device.

Online Map Viewer Interface and Tools

1. Once the map has loaded, you should see something similar to the below image:



2. There are a number of functions and important tools available to you. These are identified below:



This tool allows you to zoom in and zoom out in the map window. You can also utilize your mouse wheel to execute this function.



This tool can be used to reset your window to the default view.



This will allow you to pinpoint your location if you allow location sharing on your computer.



The search bar will allow you to search the map by address or parcel number. When searching by parcel number, do not use dashes.



The Basemap tool will open a window where you can select from a variety of different basemaps. Options include aerial imagery, topography, and a variety of other basemap types.



The measurement tool will allow you to measure both distance and area based on your drawing. After opening the tool, click the area or distance icon and click somewhere on the map to set the first point and then mouse to a second location and double click to set the measurement. For the area tool, click the corners of the area to be measured and double click to the original base point to set the measurement. Hold the CONTROL key to enable snapping to parcel lines or other features. When done, press the clear button to remove the measurements from the map.



The print tool will allow you to print out sections of the map based on your view window.



The share tool will allow you to get a link to access the map which can be sent via email.



The info tool provides a link to the Cuyahoga County MyPlace system where you can find more detailed property information.



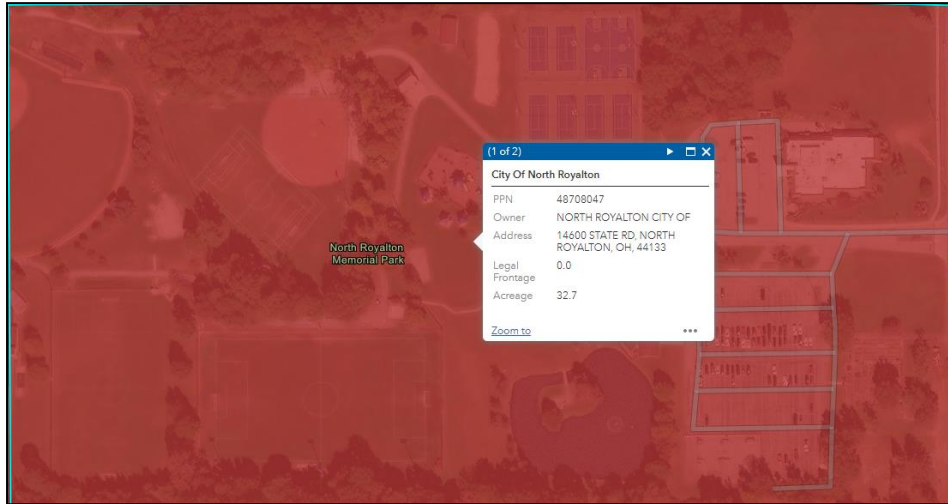
The legend tool will provide information about the various types of symbology shown on the map.



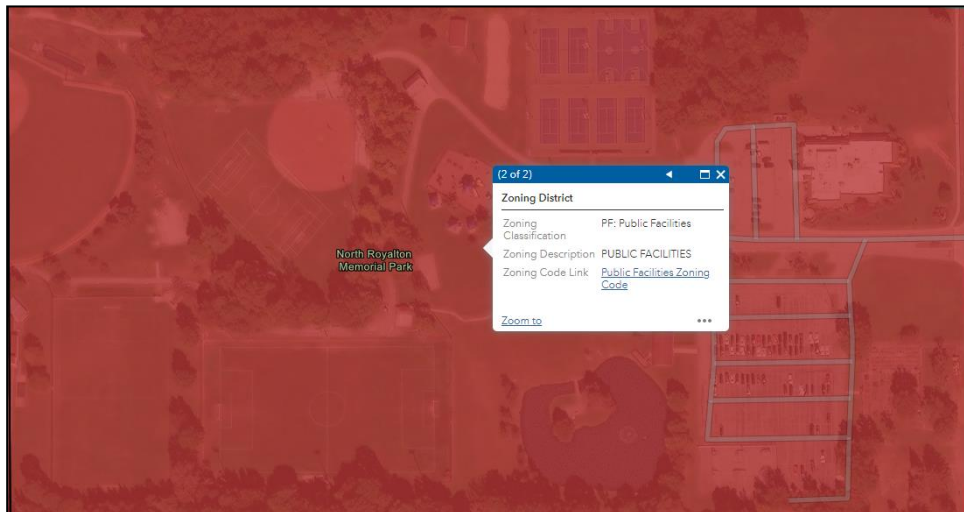
The layer list tool allows you to view the various data layers shown on the map. These layers can be turned on an off by unchecking or checking the boxes next to the layer name.

Viewing the Data in the Map

1. When interacting with the map, the viewable information is tied to which layers are turned on. For example, if you want to view parcel information, you will need to have the parcel layer turned on.
2. Once you have the applicable layers selected, simply click on the property shown on the map that you would like to view. Once you do, a box similar to below will appear:



3. The small window, known as a pop-up, will display information about the parcel. If you have multiple layers turned on, you will be able to scroll through various pages of pop-ups. Notice the "(1 of 2)" at the top of the window. Clicking the small arrow in the blue tab at the top of the window will advance to the next layer of information. In this case, the zoning layer was also selected so zoning information is displayed.



We encourage you to explore all available layers to see what information is provided. The Online GIS Viewer is a living document. As such, it will be continuously updated to reflect any changes or to provide new information.