



## Ogle County Highway Department

Jeremy A. Ciesiel, P.E., County Engineer

1989 South IL Route 2

Oregon, IL 61061

### **REQUEST FOR QUALIFICATIONS FOR PHASE I & II PRELIMINARY ENGINEERING**

#### **LOWELL PARK RD & PENN CORNER RD INTERSECTION IMPROVEMENTS, BOX CULVERT REPLACEMENT & LOWELL PARK RD VERTICAL ALIGNMENT IMPROVEMENT SECTION 23-00347-00-BR**

Ogle County is requesting qualifications from interested firms for Phase I Preliminary Engineering and Phase II Preliminary Engineering for improvements along Lowell Park Rd beginning just north of the intersection with Penn Corner Rd and ending approximately ¼-mile south of Penn Corner Rd. Needed improvements include increasing the intersection sight distance, adjusting intersection drainage, widening portions of the Lowell Park Rd shoulders as well as replacing the existing single barrel box culvert on Lowell Park Rd located 0.2 miles south of Penn Corner Rd. One firm will be selected to perform all Preliminary Engineering work.

The existing 12' by 8' box culvert dates back to before the 1930's. It was originally added on to in the late 1930's, and then at some point was extended once again to its current configuration. A roughly 1.05 square mile area drains through the structure along what can best be described as the northwest branch of Bullhead Creek in Pine Creek Township. The culvert has outlived its useful life and should be completely replaced.

There is currently a crest in the vertical curve between the culvert proposed to be replaced and Penn Corner Rd. The crest limits sight distance to the south for any vehicles on Penn Corner Rd looking to enter or cross Lowell Park Rd. The church at the southwest corner of the intersection has recently been removed, providing a new opportunity to reshape the vertical alignment to the south of the intersection.

The Ogle County Highway Department desires to replace the existing culvert, adjust the vertical alignment of Lowell Park Rd and improve the intersection with Penn Corner Rd. Roadway improvements shall include 3' to 4' wide paved shoulder. Intersection improvements should include realignment of the existing cross road culverts and ditch improvements. This will require the relocation of the gutter along the west side of the road to create room. It is expected that the project will be funded with a combination of Motor Fuel Tax and Local County funds.

Anticipated issues for this project include:

- 1) There is a cemetery along the west side of Lowell Park Rd that is a firm barrier. Improvements cannot extend into the cemetery. However, it may be possible to eliminate the paved entrance on the north side of the cemetery.
- 2) There is a house at the southeast corner of Lowell Park Rd and Penn Corner Rd. The acquisition of additional right of way from this parcel is not likely.
- 3) The backslope along the agricultural field on the east side of the road is already higher than the road. The current roadside ditch makes for a steeper backslope. Incorporation of a curb and gutter may be needed to fit the paved shoulder in this area.

Lowell Park Rd Culvert Replacement & Vertical Curve Improvement  
Section 23-00347-00-BR

- 4) There is a gas main along the road. Early coordination with Nicor and any other utilities is a must in order to facilitate any needed relocations.

Phase I & II preliminary engineering services are needed for all necessary work to receive Design Approval and to prepare the plans, specifications and estimates (PS&E) package. Specific tasks may include, but are not limited to, the following:

- Data collection and survey
- Environmental studies coordination
- Preliminary Bridge Design and Hydraulic Report
- Prepare IDOT forms
- Prepare contract plans and project special provisions/specifications
- Prepare estimates of cost and time
- Right of Way acquisition including Highway Plats and Legals

Prime firm must be IDOT prequalified in the following categories:

- Structures: Highway-Typical

Firms who submit qualifications will be evaluated on the following criterion:

Technical Approach – 25%

Firm Experience – 15%

Staff Capabilities (Prime/Sub) – 10%

Past Performance on Similar Projects (Not necessarily with Ogle County) – 25%

Approach to planning, organizing and management – 15%

Specialized Expertise (specific to cemetery or culturally sensitive areas) – 10%

Attached to this Request, please find the following information for your use:

- Location Plan
- Photos of Existing Structure
- Photos of Existing Intersection and Alignment

Interested firms shall submit three (3) copies of qualifications to the Ogle County Highway Department, in writing, no later than 3:00 P.M. on Monday, May 15, 2023. Emailed submittals will also be accepted. Firms must also submit a disclosure statement with their qualifications. The disclosure statement form can be found at:

[http://www.oglecounty.org/departments/highway\\_department/qbs.php](http://www.oglecounty.org/departments/highway_department/qbs.php)

Responses and questions should be directed to:

Mr. Jeremy A. Ciesiel, P.E.

Ogle County Engineer

1989 South IL Route 2

Oregon, IL 61061

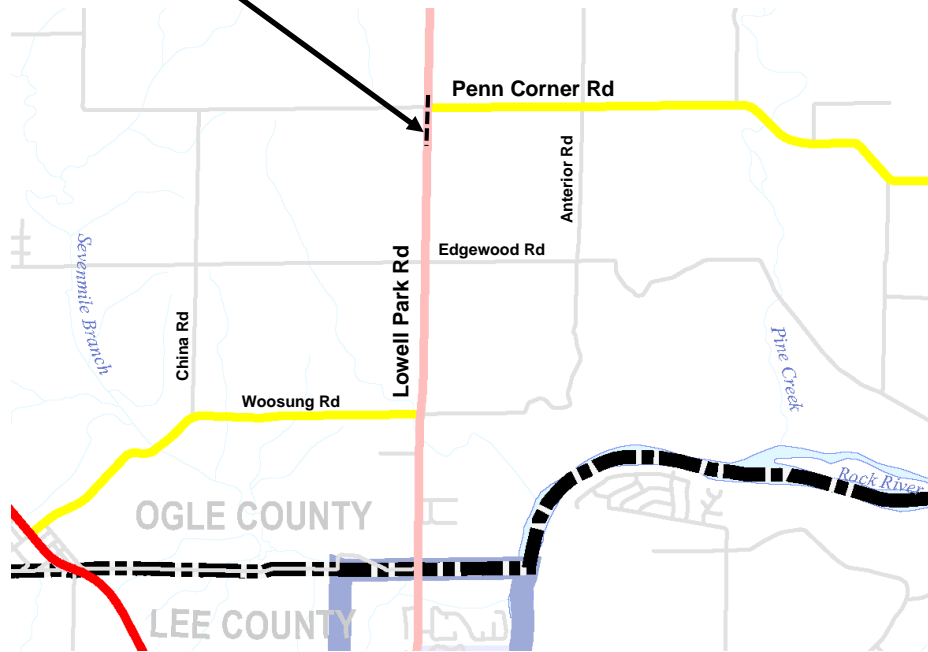
Phone: (815) 732-2851

Email: [highway@oglecountyil.gov](mailto:highway@oglecountyil.gov)

**Location & Functional Classification Map**  
**Lowell Park Road (CH 35)**  
**Sec. 23-00347-00-BR**  
**Ogle County, IL**

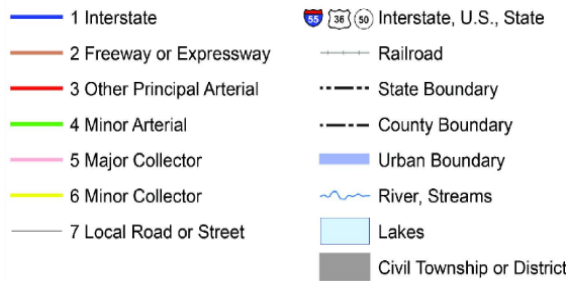
Existing Single Barrel (12'x8')  
 Box Culvert  
 (To be replaced)

Approximate Project Limits:  
 155' North of Penn Corner Rd  
 1205' South of Penn Corner Rd



T23N, R9E of the 4<sup>th</sup> P.M.  
 Pine Creek Township, Section 1

**5-Year Classification**





**Lowell Park Road at Penn Corner Road  
Culvert Replacement & Intersection Improvements  
Ogle County, Illinois**

