

Note: This map shall not be relied upon as the sole basis for making a determination as to a particular parcel's zoning designation. For a formal determination, the Ogle County Planning & Zoning Department must be contacted directly.

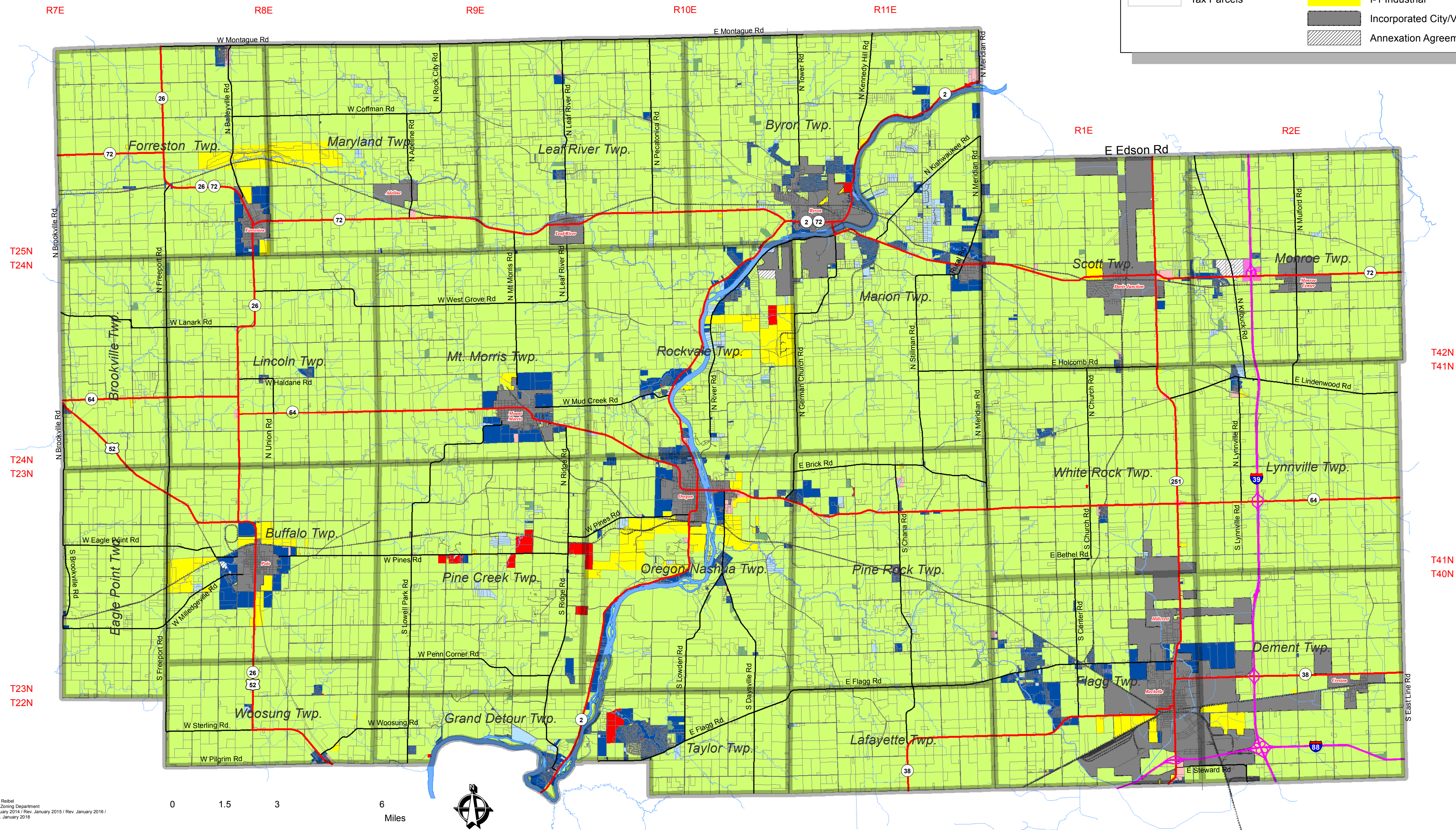
Disclaimer: There may be errors in this map. This map may be out-dated and/or inaccurate. This map may not be suitable for your particular use. The burden for determining fitness of use rests solely on the end user. This map product is made available on the condition that users agree that the County of Ogle shall not be liable for tangible or intangible loss or damage of any kind, including physical injury, death, property damage, economic loss or consequential damages arising from any errors, inaccuracies or omissions in the map product, even if such errors, inaccuracies or omissions are attributable in whole or in part to negligence or failure to use due care in obtaining or presenting this map product. By using this map product, you, the user, accept this limitation on the County of Ogle's liability.

Zoning District Map Ogle County, IL

Zoning Districts Current Through January 1, 2018

LEGEND

	Interstate Highways		AG-1 Agricultural
	State/Federal Highways		IA Intermediate Agricultural
	County Highways		R-1 Rural Residence
	Other Roads		R-2 Single Family Residence
	Rail Lines		R-4 Mobile Home Park
	Major Streams		B-1 Business
	Streams		B-2 Business Recreation
	Rock River		B-3 Restricted Interstate Highway Area
	Tax Parcels		I-1 Industrial
			Incorporated City/Village
			Annexation Agreement



Map Created by Michael Reibel
Ogle County Planning & Zoning Department
January 2013 / Rev. January 2014 / Rev. January 2015 / Rev. January 2016 /
Rev. January 2017 / Rev. January 2018

0 1.5 3 6
Miles

