

Monday, January 9, 2023
7 P.M.



Town Hall Commission Chambers
247 Edwards Lane
Palm Beach Shores, FL 33404

Mayor Alan Fiers
Vice Mayor Scott McCrannels

Commissioner Tracy Larcher
Commissioner Janet Kortenhaus
Commissioner Brian Tyler

Town Attorney Keith Davis
Town Administrator Wendy Wells
Town Clerk Jude M. Goudreau

PLEASE NOTE:

THIS MEETING IS ALSO CONDUCTED USING COMMUNICATION MEDIA TECHNOLOGY

Join information

Meeting link:

<https://townofpalmbeachshores.my.webex.com/townofpalmbeachshores.my/j.php?MTID=mf8cf6faf9f25ff34167808b3ac87380c>

Meeting number: 2632 851 3269 Password: 0109

Join by phone +1-408-418-9388 United States Toll Access code: 263 285 13269

COMMISSION WORKSHOP AGENDA

1) CALL TO ORDER

- a) Pledge of Allegiance
- b) Roll Call

2) Discussion Items:

- EMS Contract Update
- CSA for additional drainage improvements – Lake and Bamboo
- Enforcement of Violations- Beach Permits, Golf Carts
- Update on the Road Project
- Inlet Park

3) Public Comments: (please state your name)

4) Adjournment:

PLEASE TAKE NOTICE AND BE ADVISED, that if any interested person desires to appeal any decision made by the Town Commission with respect to any matter considered at this meeting or hearing, such interested person will need a record of the proceedings, and for such purpose may need to insure that a verbatim record of the proceedings is made, which record includes the testimony and evidence upon which the appeal is based. The meeting/hearing will be continued from day to day, time to time, place to place, as may be found necessary during the aforesaid meeting. IN ACCORDANCE WITH THE PROVISIONS OF THE AMERICANS WITH DISABILITIES ACT (ADA), THIS DOCUMENT CAN BE MADE AVAILABLE IN AN ALTERNATE FORMAT (LARGE PRINT) UPON REQUEST AND SPECIAL ACCOMODATIONS CAN BE PROVIDED UPON REQUEST WITH THREE (3) DAYS ADVANCE NOTICE. FOR HEARING ASSISTANCE: If any person wishes to use a hearing device, please contact the Town Clerk.



TOWN OF PALM BEACH SHORES

247 Edwards Lane, Palm Beach Shores, Florida 33404-5792

Ph: (561) 844-3457 • Fax: (561) 863-1350

www.palmbeachshoresfl.us

Road Project Update....

The following items have been completed or are in progress:

- Surveying is complete on all roads
- Lift Station information is complete and is incorporated within the survey
- Engaged Nutting Engineers to submit an estimate to perform geotechnical services
- Retrieved survey data from others to incorporate into the engineering plan
- Received and reviewed Ardamen Engineers' Report who performed geotechnical services in 2012
- Engaged Ardamen for a cost to utilize old information to be cost effective
- Began creating Engineering plans utilizing survey information from others
- Reviewed water main plans to understand construction scope, details, and notes regarding pavement
- Walked site several times to identify East-West Road asphalt settling between lot lines
- Walked perimeter roads to identify asphalt conditions and safety issues
- Taken photographs and notes at all site observations
- Designated a graphic scale and placed pages strategically for potential project phasing
- Reviewed and restriped parking spaces along Lake Drive
- Denoted areas of settling on plans
- Began creating legends, details and notes
- Began striping and callouts at all driveways
- Met internally several times to discuss design, project layout and potential cross sections

Inlet Park Presentation

Town of Palm Beach Shores

Robert F. Rennebaum, P.E.
Town Engineer



PRESENTATION OUTLINE

- I. AERIALS
- II. PHOTOS – LOOKING WEST
- III. PHOTOS – LOOKING EAST
- IV. PHOTOS – INLET VIEW
- V. PHOTOS – THE ROMAINE
- VI. PHOTOS – THE ANCHORAGE
- VII. CONCEPT PLANS OPTIONS “A” & “B”

I. AERIALS





II. PHOTOS LOOKING WEST









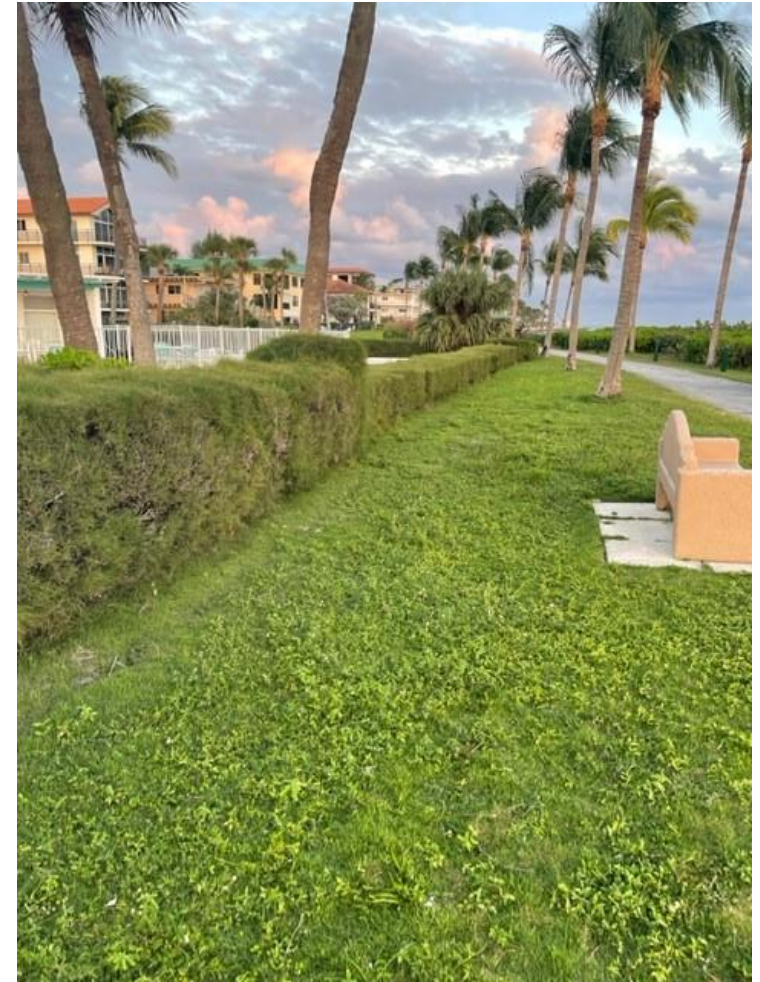






III.PHOTOS LOOKING EAST





IV. PHOTOS INLET VIEW







V. PHOTOS THE ROMAINE







VI. PHOTOS THE ANCHORAGE







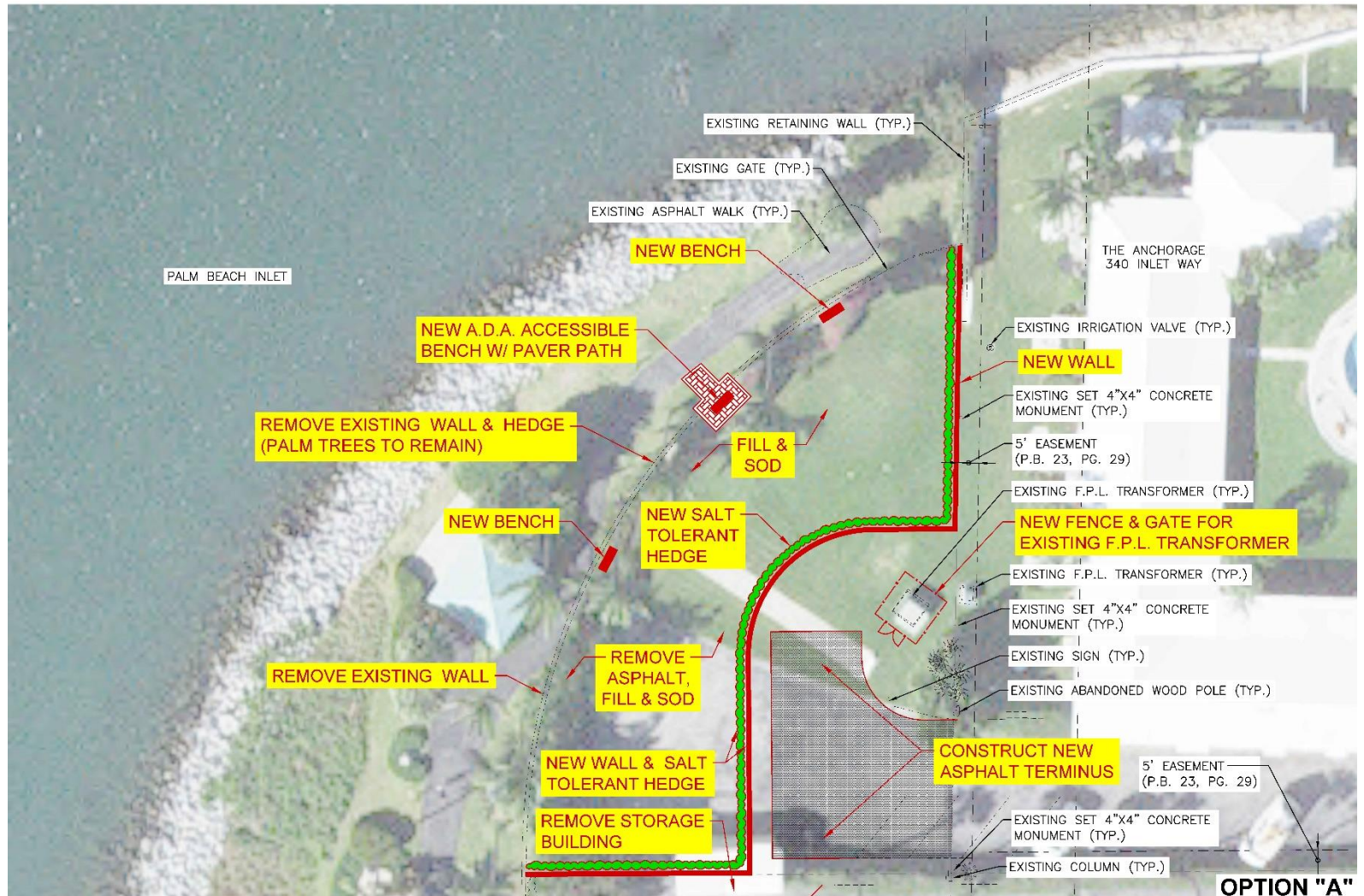




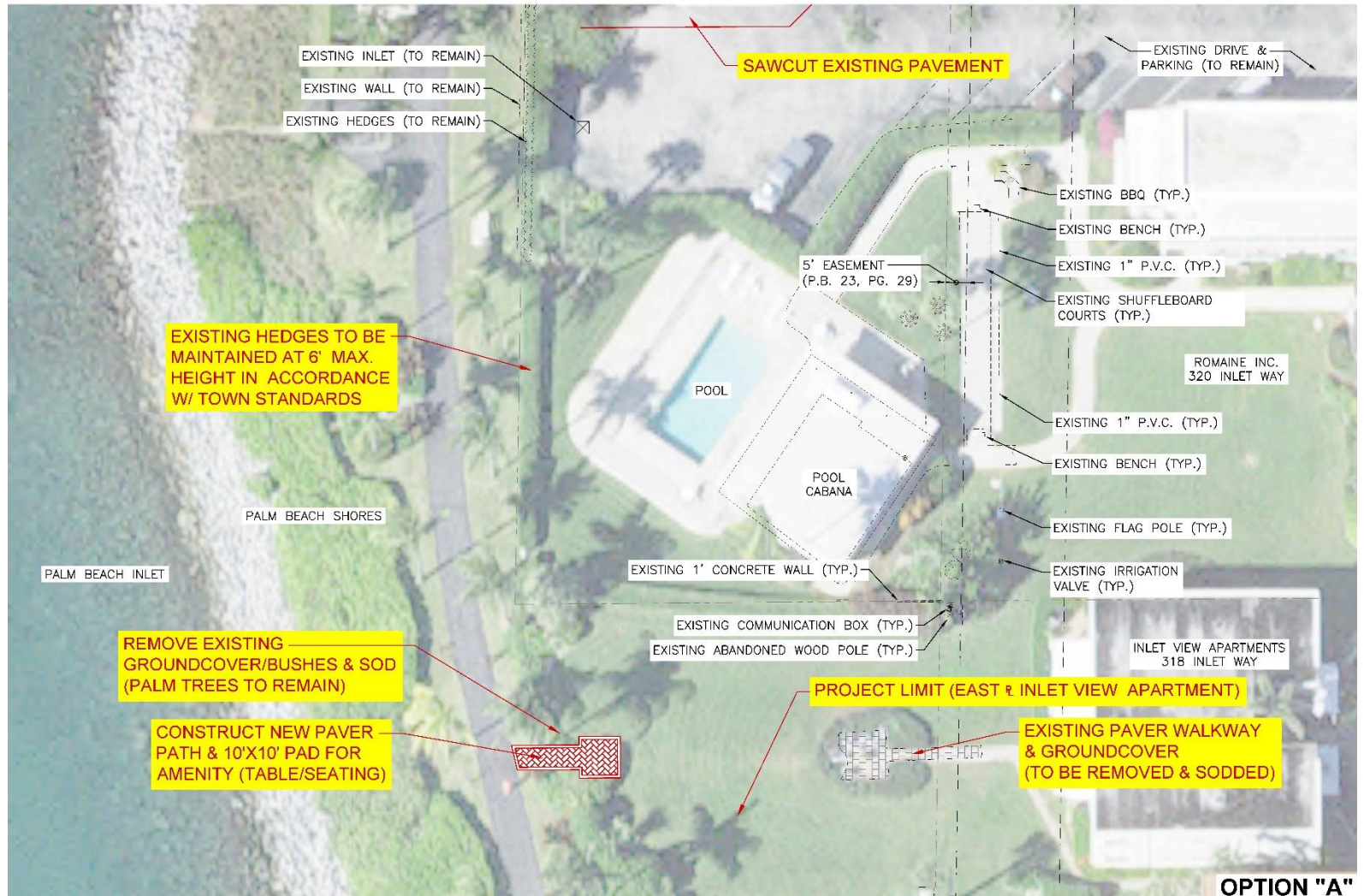


VII. CONCEPT PLANS OPTIONS “A” & “B”

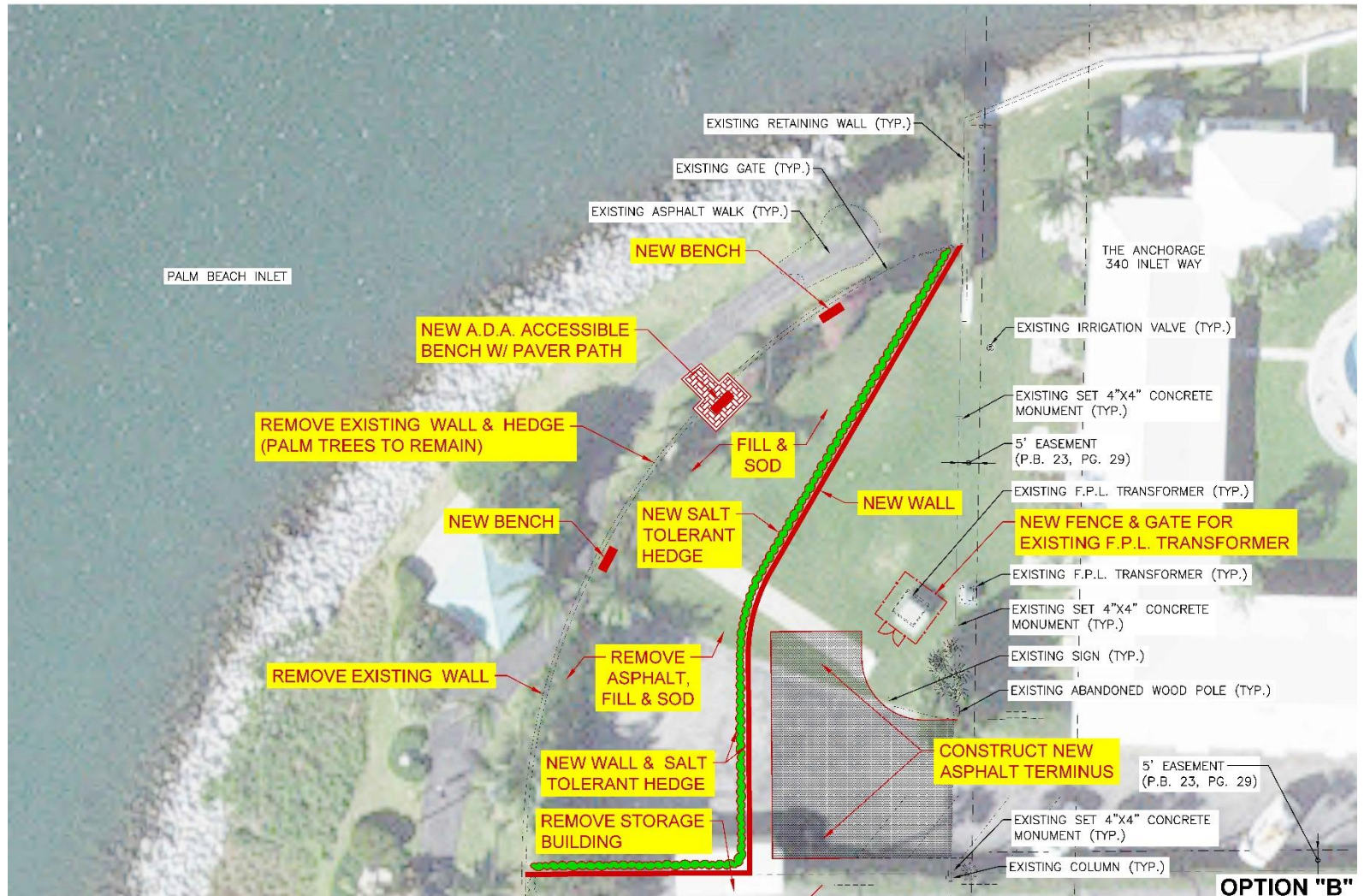
OPTION A, PAGE 1



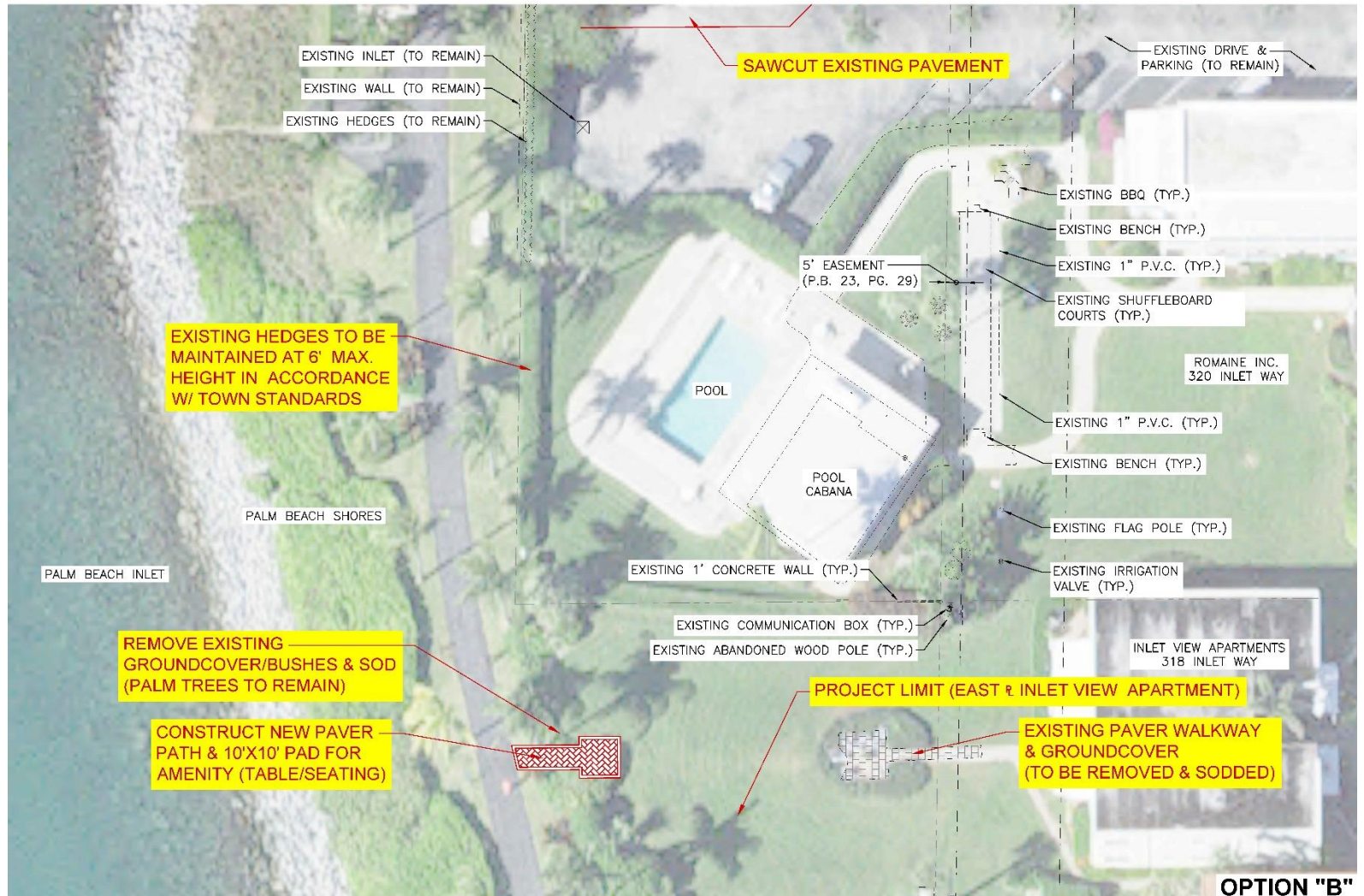
OPTION A, PAGE 2



OPTION B, PAGE 1



OPTION B, PAGE 2



OPTION "B"