

Pershing County, Nevada Master Plan

Figure 12
Upper & Lower Valleys
near Lovelock Insert

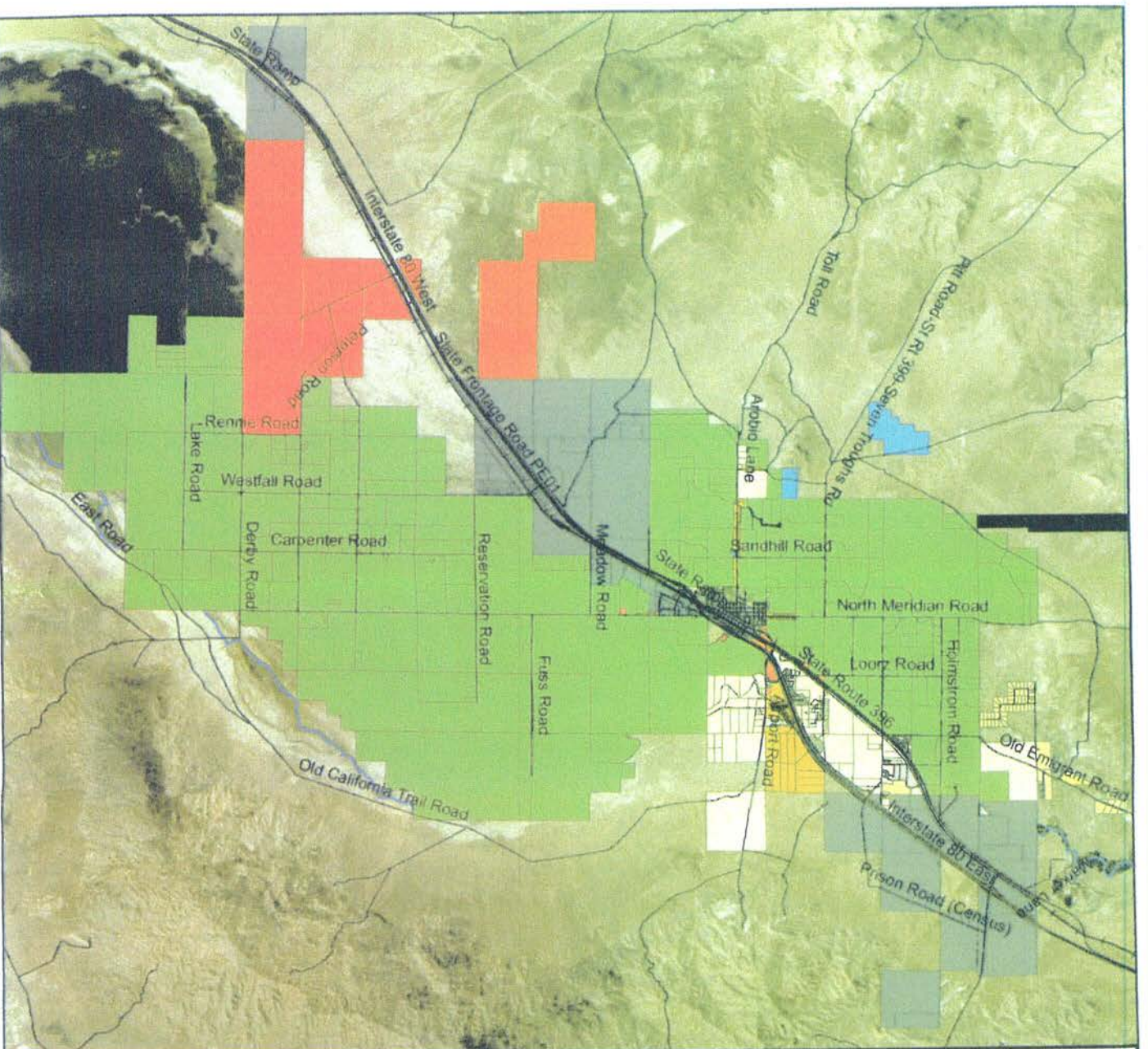
Planned Land Use LandUseDistricts

- General Rural
- Low density rural
- Medium density rural
- Low density suburban
- Medium density suburban
- High density suburban
- General commercial
- Portions are General Commercial
- Neighborhood commercial
- Industrial
- Public services and facilities
- Agricultural Mining Recreation
- Humboldt River
- Pershing roads
- railroads

0 0.5 1 2 3 4
Miles

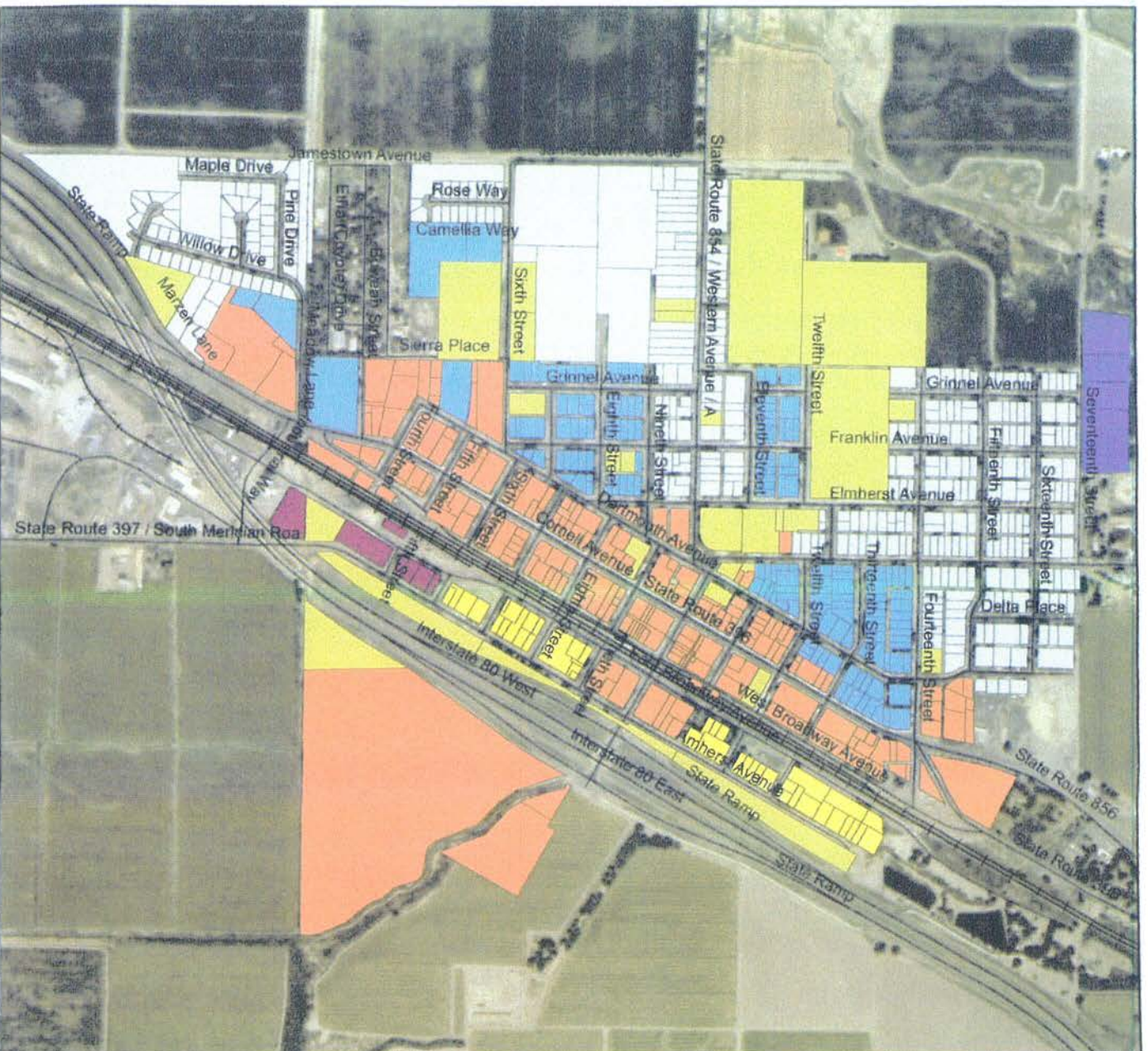


Note: This map is for assessment use only and does not represent a survey.
No liability is assumed to the accuracy of the data delineated herein.
2012



Pershing County, Nevada Master Plan

Figure 13
City of Lovelock Land Use Districts
Planned Land Use
Lovelock Land Use
City Zoning

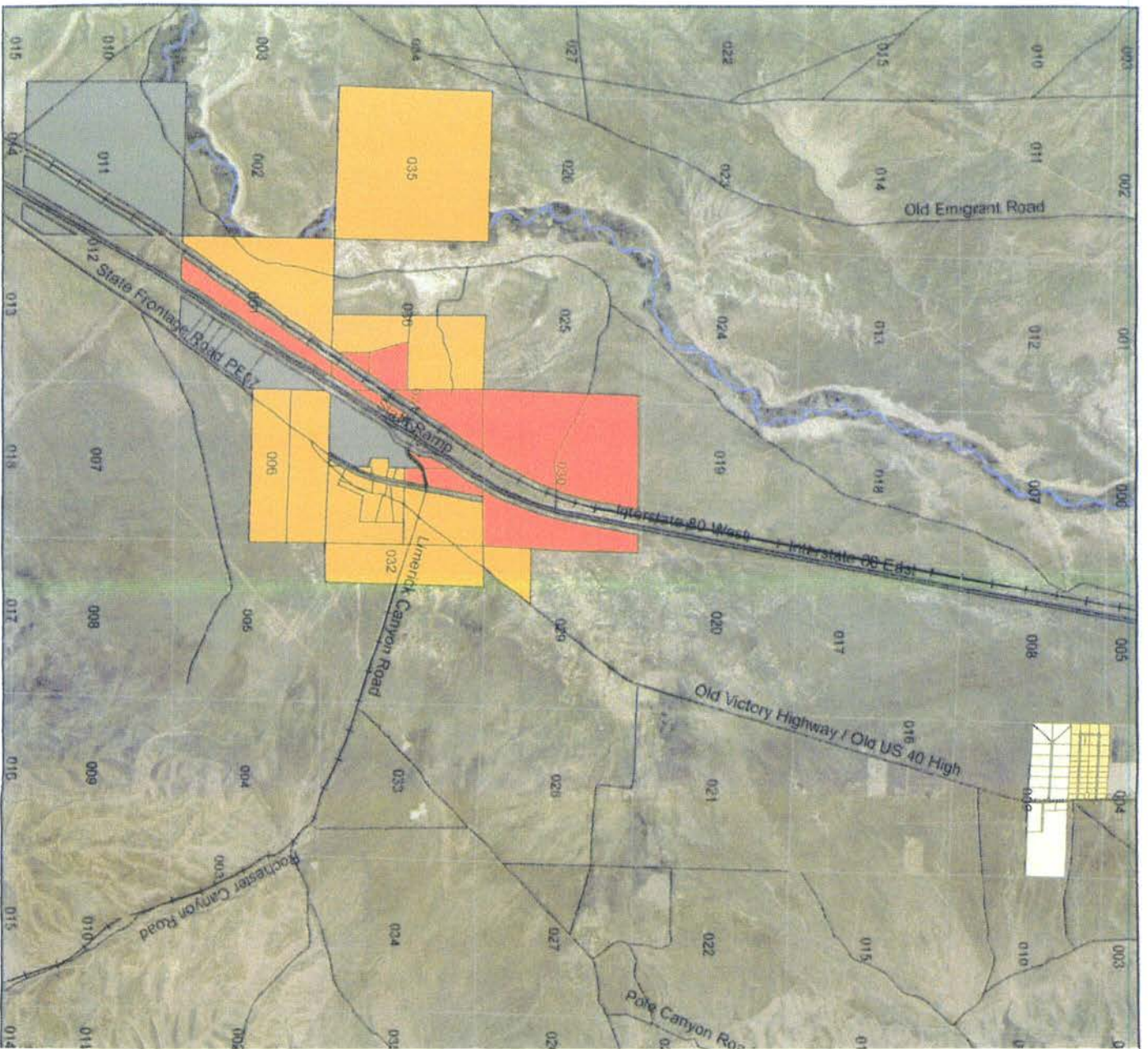


- Single Family
- Multiple Family
- Large Lot Single Family
- Public Services and Facilities
- Commercial
- Industrial / Commercial
- Industrial
- Humboldt River
- Pershing roads
- railroads

0 0.05 0.1 0.2 0.3 0.4
Miles



Note: This map is for assessment use only and does not represent a survey.
No liability is assumed to the accuracy of the data delineated hereon.
2012



Pershing County, Nevada Master Plan

Figure 14 Oreana
Planned Land Use

LandUseDistricts

- General Rural
- Low density rural
- Medium density rural
- Low density suburban
- Medium density suburban
- High density suburban
- General commercial
- Portions are Neighborhood Com.
- Neighborhood commercial
- Industrial
- Public services and facilities
- Agricultural Mining Recreation
- Humboldt River
- Pershing roads
- railroads

0 0.25 0.5 1 1.5 2
Miles



Note: This map is for assessment use only and does not represent a survey.
No liability is assumed to the accuracy of the data delineated hereon.
2012

Pershing County, Nevada Master Plan

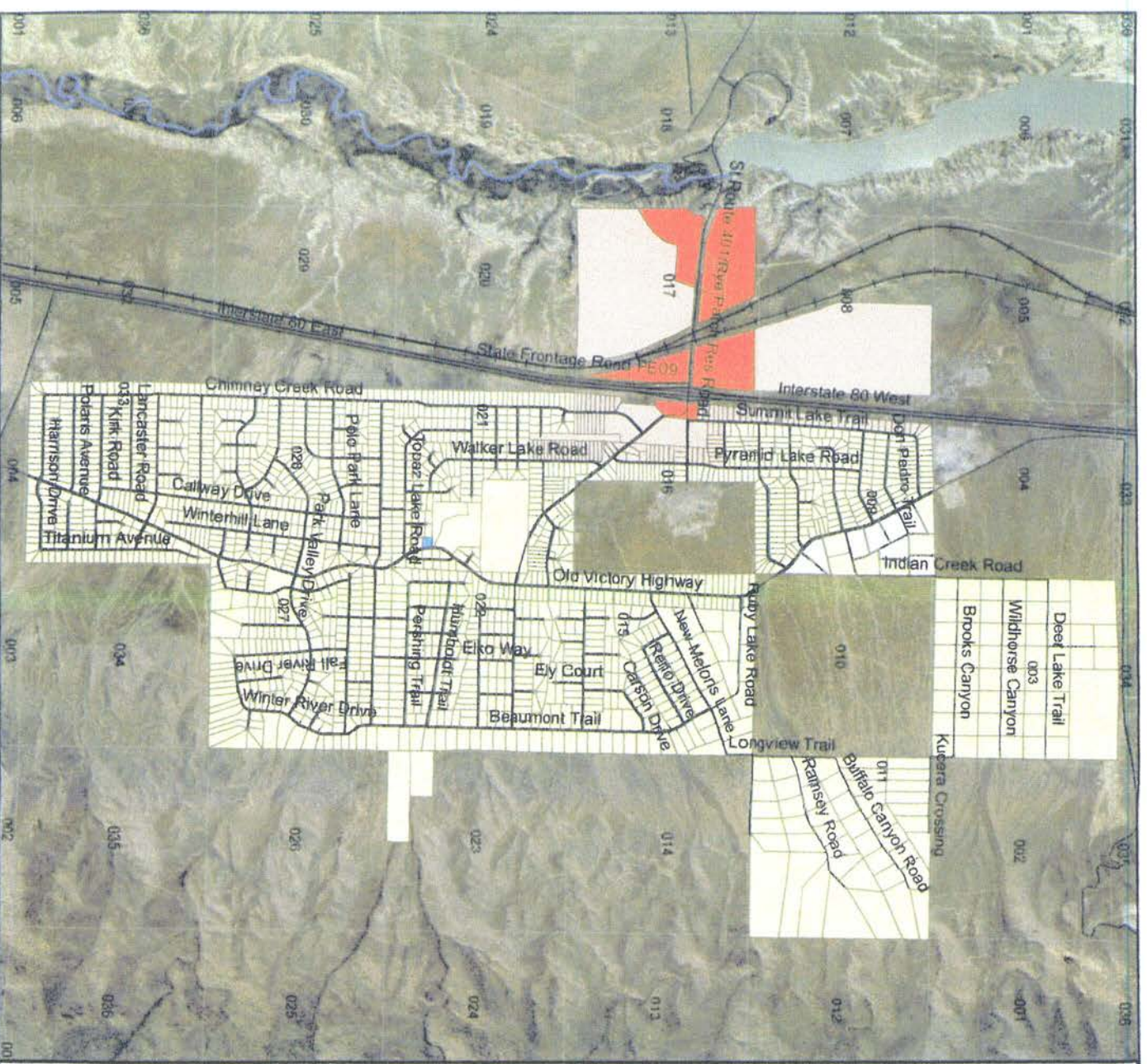
Figure 15
Humboldt River Ranch Area
Planned Land Use

Land Use Districts

- General Rural
 - Low density rural
 - Medium density rural
 - Low density suburban
 - Medium density suburban
 - High density suburban
 - General commercial
 - Portions are General Commercial
 - Neighborhood commercial
 - Industrial
 - Public services and facilities
 - Agricultural Mining Recreation
- Humboldt River
 Pershing roads
 railroads



Note: This map is for assessment use only and does not represent a survey. No liability is assumed to the accuracy of the data delineated hereon.



Pershing County, Nevada Master Plan

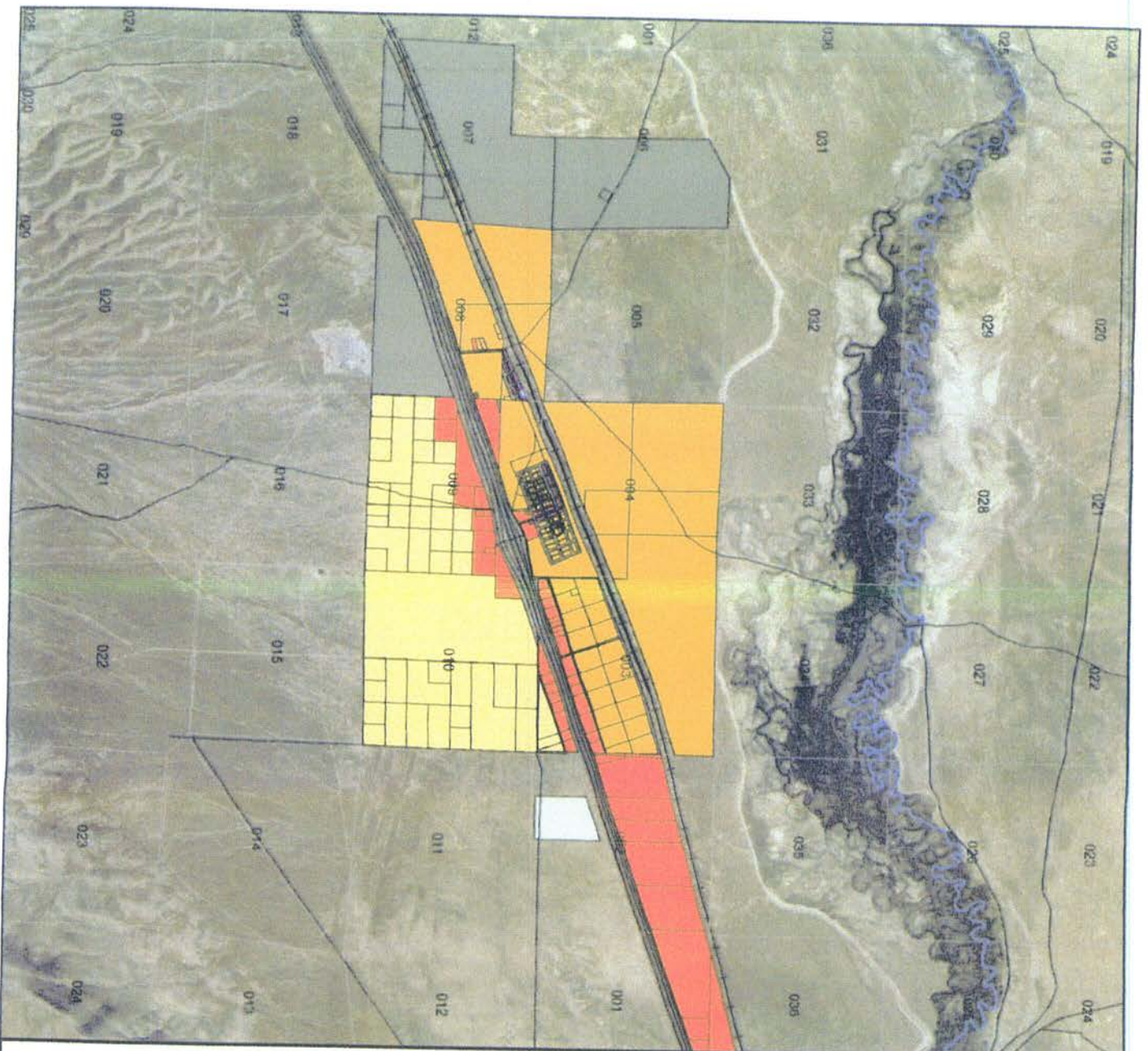
**Figure 16 Imlay Insert
Planned Land Use**

LandUseDistricts

- General Rural
- Low density rural
- Medium density rural
- Low density suburban
- Medium density suburban
- High density suburban
- General commercial
- Portions are Neighborhood Commercial
- Neighborhood commercial
- Industrial
- Public services and facilities
- Agricultural Mining Recreation
- General Rural Non-Ag Preservation
- Humboldt River
- Pershing roads
- railroads



Note: This map is for assessment use only and does not represent a survey.
No liability is assumed to the accuracy of the data depicted hereon.
2012



Pershing County, Nevada Master Plan

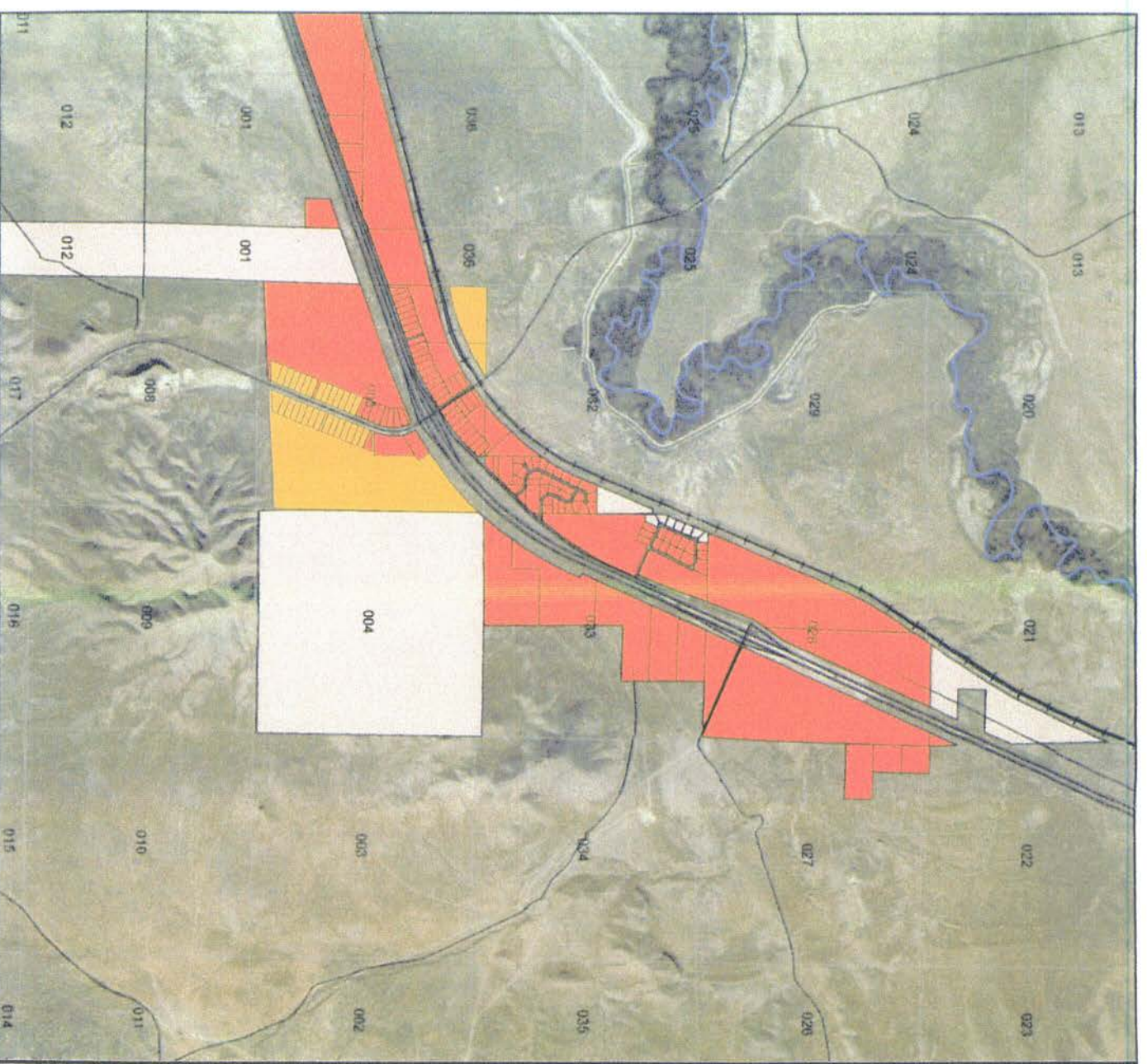
Figure 17 Mill City
Planned Land Use

LandUseDistricts

- General Rural
- Low density rural
- Medium density rural
- Low density suburban
- Medium density suburban
- High density suburban
- General commercial
- Portions of parcel are Gen. Commercial
- Neighborhood commercial
- Industrial
- Public services and facilities
- Agricultural Mining Recreation
- Humboldt River
- Pershing roads
- railroads



Note: This map is for assessment use only and does not represent a survey.
No liability is assumed to the accuracy of the data delineated herein.
2012

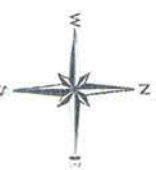


Pershing County, Nevada Master Plan

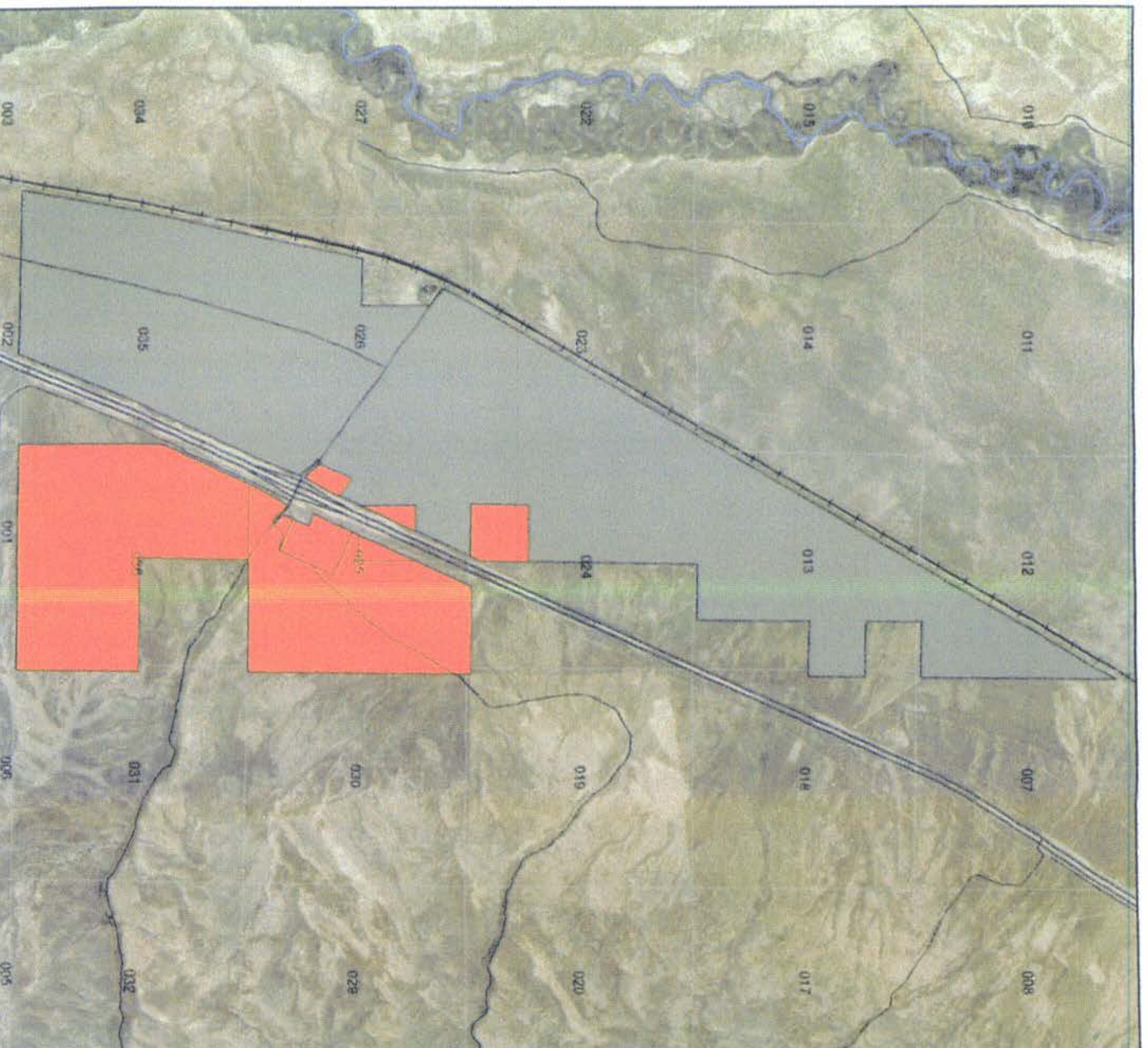
Figure 18 Cosgrave
Planned Land Use

LandUseDistricts

- General Rural
- Low density rural
- Medium density rural
- Low density suburban
- Medium density suburban
- High density suburban
- General commercial
- Portions of parcel are Gen. Commercial
- Neighborhood commercial
- Industrial
- Public services and facilities
- Agricultural Mining Recreation
- Humboldt River
- Pershing roads
- railroads



Note: This map is for assessment use only and does not represent a survey.
No liability is assumed to the accuracy of the data delineated herein.
2012



Pershing County, Nevada Master Plan

Figure 19 Grass Valley
Planned Land Use

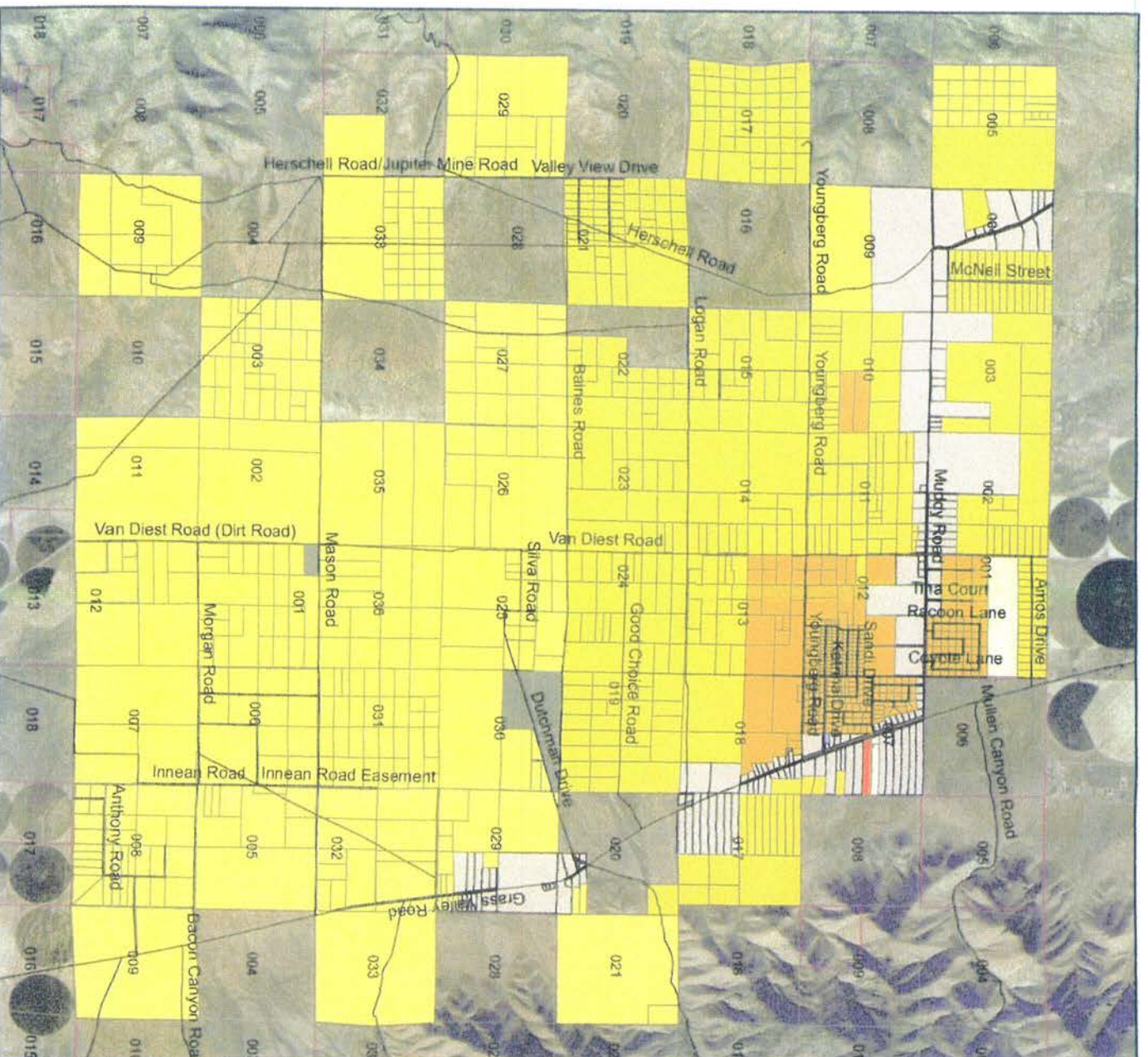
LandUseDistricts

- General Rural
- Low density rural
- Medium density rural
- Low density suburban
- Medium density suburban
- High density suburban
- General commercial
- Portions are Neighborhood Com.
- Neighborhood commercial
- Industrial
- Public services and facilities
- Agricultural Mining Recreation
- Humboldt River
- Pershing roads
- railroads

0 0.3750.75 1.5 2.25 3
Miles



Note: This map is for assessment use only and does not represent a survey.
No liability is assumed to the accuracy of the data delineated hereon.
2012

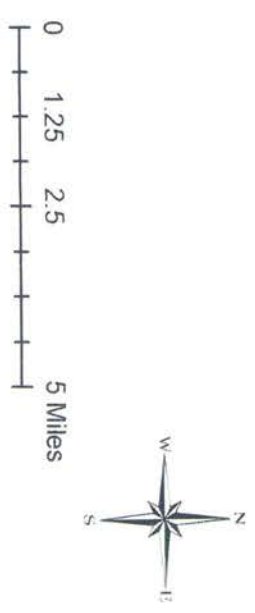


Pershing County, Nevada Master Plan

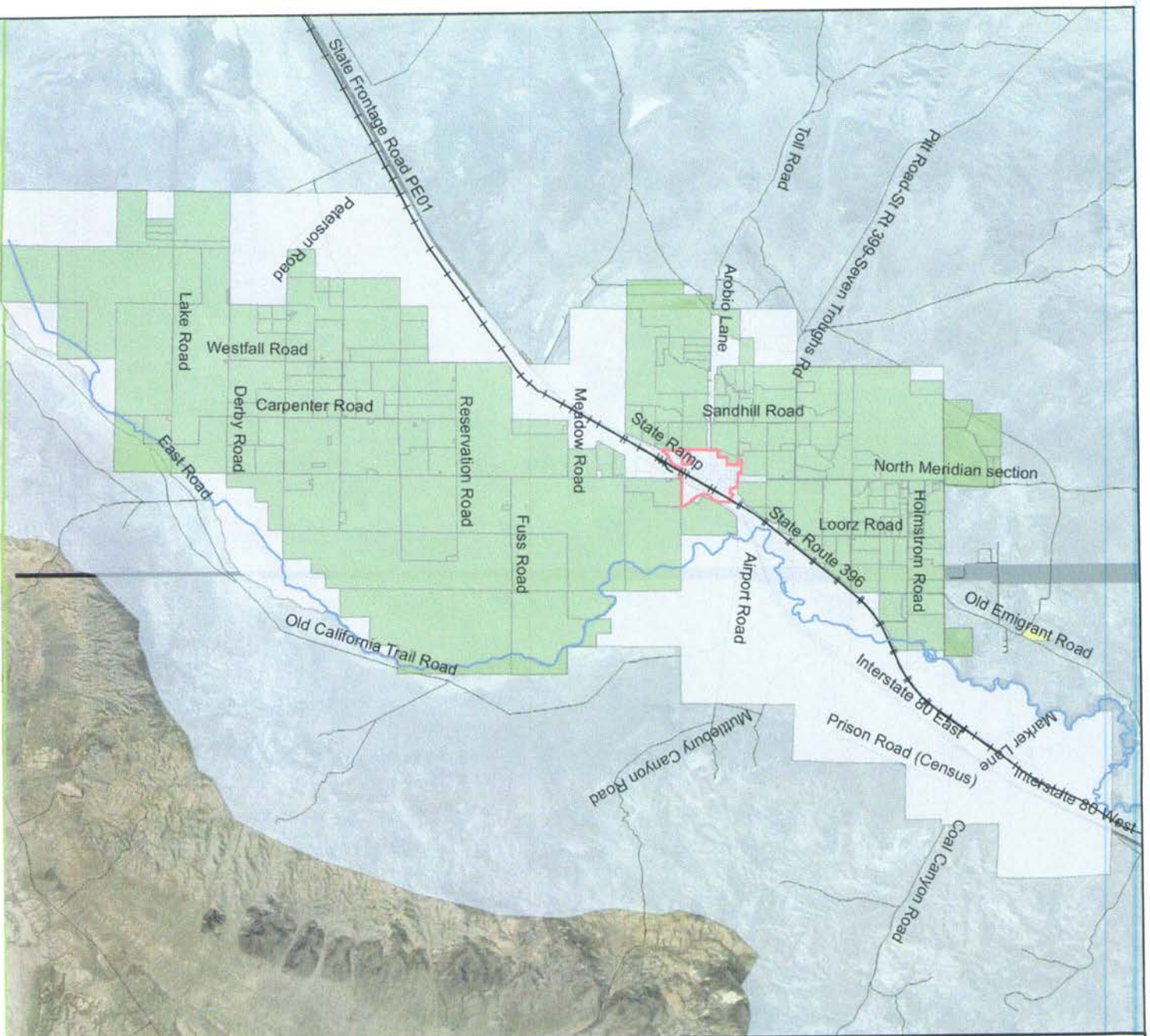
Figure 21
Sub-Basin 73 & 73A,
Lovelock Meadows Water
District service area with
Agricultural Preservation
District Boundary

Planned Land Use

-  Lovelock Meadows Water District Service Area
-  Water Basins 73A & 73 Boundaries
-  Agricultural Preservation Overlay District
-  Lovelock Boundary
-  Pershing County Boundary
-  Humboldt River
-  Pershing roads
-  Railroads



Note: This map is for assessment use only and does not represent a survey. No liability is assumed to the accuracy of the data delineated hereon. 2012



Pershing County, Nevada Master Plan

Figure 22

1% Chance of Flooding (FEMA- NFIP data)

Stream Center line

1% Chance of Flooding line

Pershing roads



Pershing County Boundary



Note: This map is for assessment use only and does not represent a survey. No liability is assumed to the accuracy of the data depicted hereon. 2012

