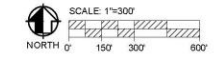


SITE PLAN 2: EXISTING CONDITIONS

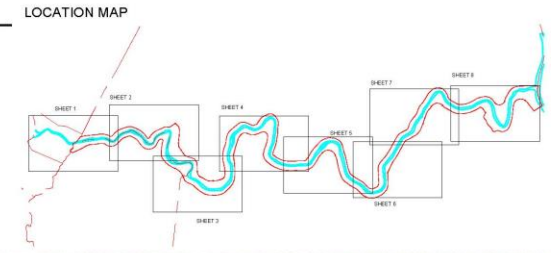


PIKE COUNTY TRAIL STUDY
PIKE COUNTY, PA
BCR-TAG-25-167

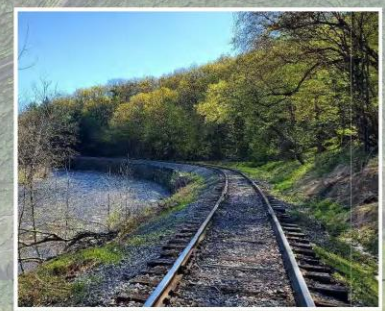


LEGEND:

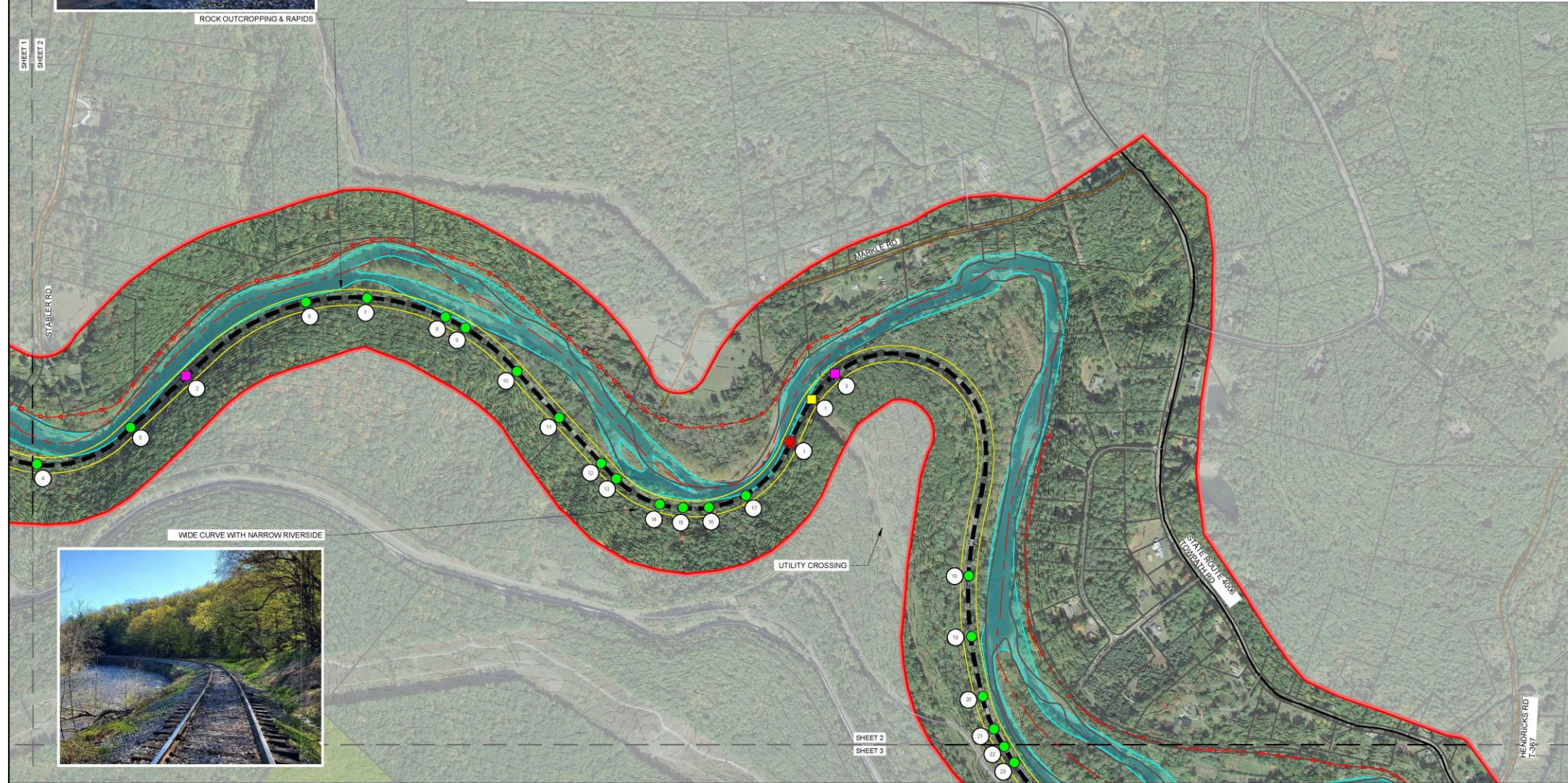
LACKAWAXEN RIVER	TRAIL LIMITATIONS
STUDY AREA	RAILROAD BRIDGE
EXISTING RAIL LINE	MILE MARKER
TOWPATH	DRIVEWAY CROSSING
RAILROAD CORRIDOR-VAL MAPS	ROAD CROSSING
STATE ROADS	MISCELLANEOUS
TOWNSHIP ROAD	UTILITY CROSSING
LOCAL ROADS	CULTURAL FEATURE
EX CONTOURS (C10)	
PROPERTY BOUNDARY	
MUNICIPALITIES	
AREAS OF INTEREST	

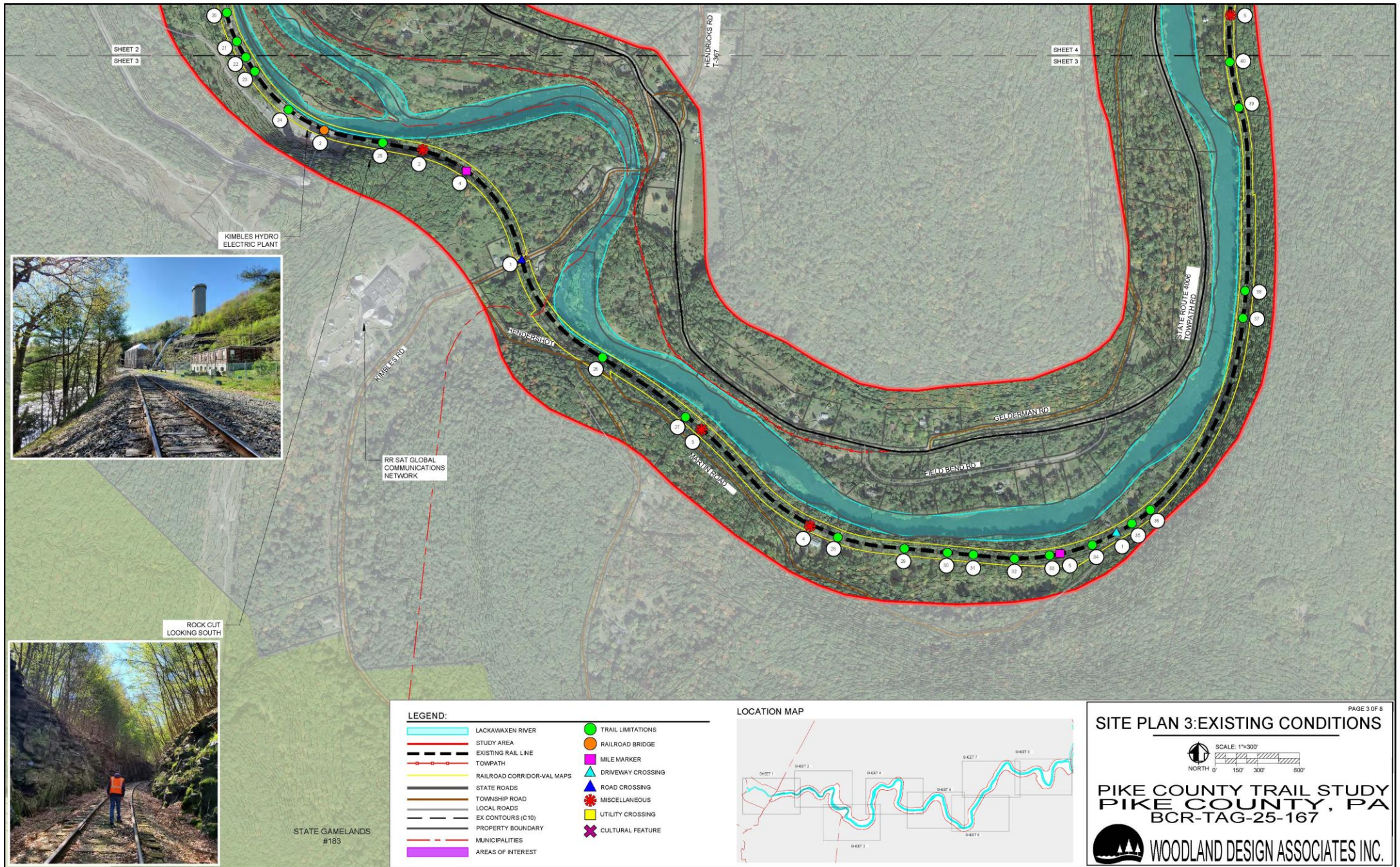


ROCK OUTCROPPING & RAPIDS



WIDE CURVE WITH NARROW RIVERSIDE



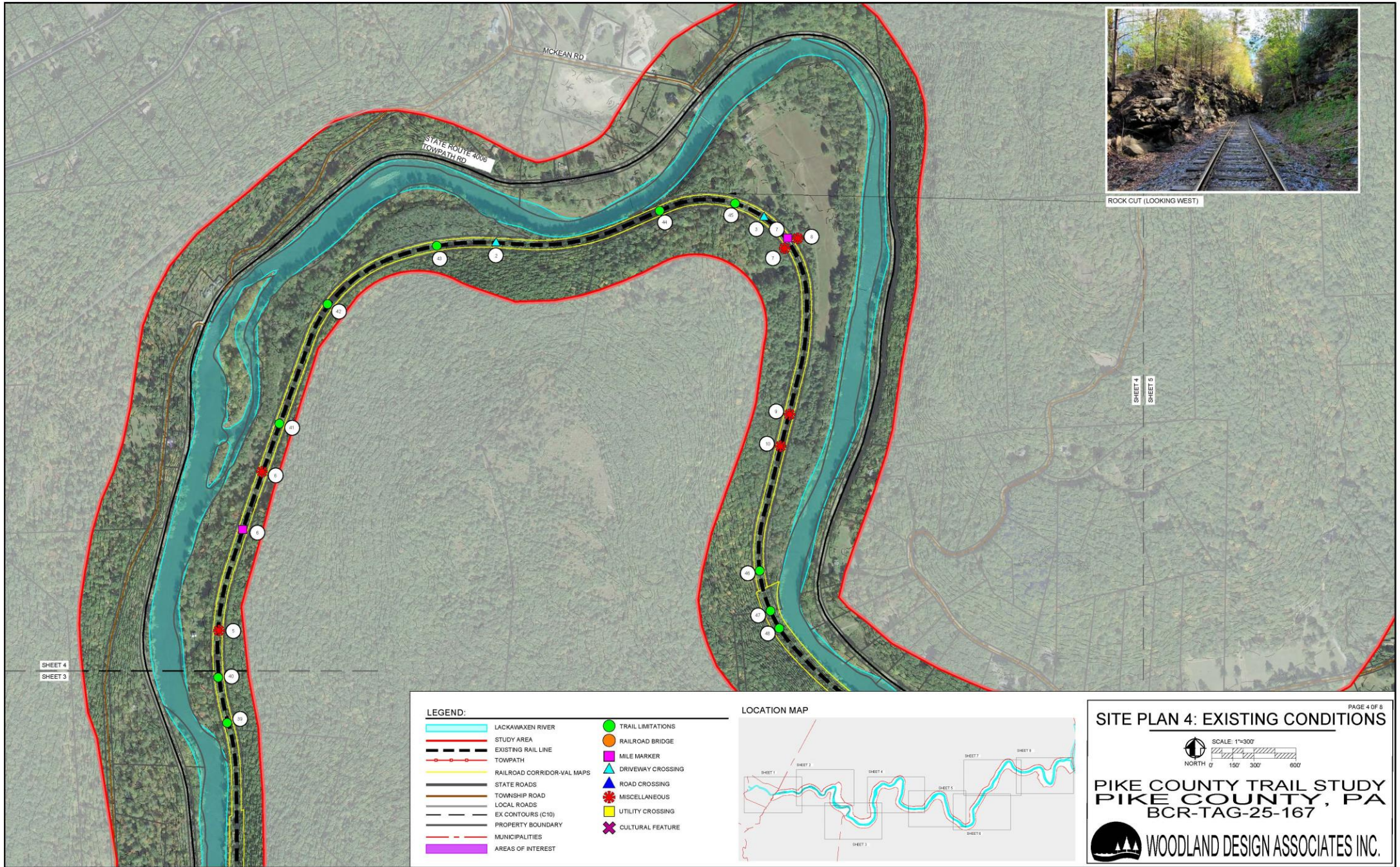


KIMBLES HYDRO
ELECTRIC PLANT



ROCK CUT
LOOKING SOUTH

STATE GAMELANDS
#183

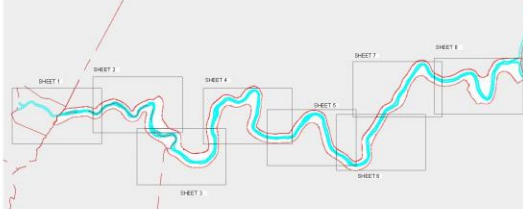


ROCK CUT (LOOKING WEST)

LEGEND:

- | | |
|----------------------------|-------------------|
| LACKAWAXEN RIVER | TRAIL LIMITATIONS |
| STUDY AREA | RAILROAD BRIDGE |
| EXISTING RAIL LINE | MILE MARKER |
| TOWPATH | DRIVEWAY CROSSING |
| RAILROAD CORRIDOR-VAL MAPS | ROAD CROSSING |
| STATE ROADS | MISCELLANEOUS |
| TOWNSHIP ROAD | UTILITY CROSSING |
| LOCAL ROADS | CULTURAL FEATURE |
| EX CONTOURS (C10) | |
| PROPERTY BOUNDARY | |
| MUNICIPALITIES | |
| AREAS OF INTEREST | |

LOCATION MAP



SITE PLAN 4: EXISTING CONDITIONS

PAGE 4 OF 8

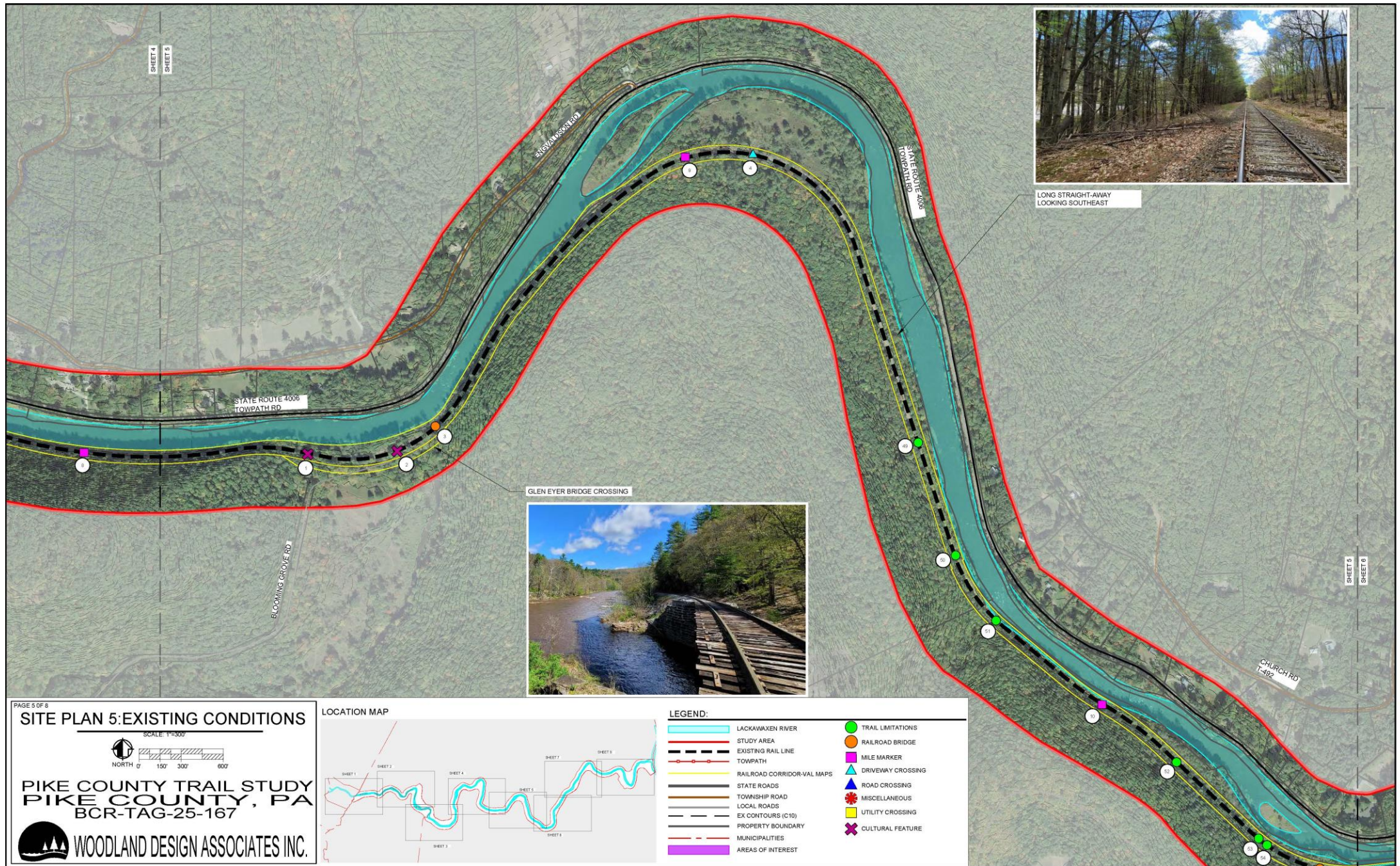
SCALE: 1"=300'

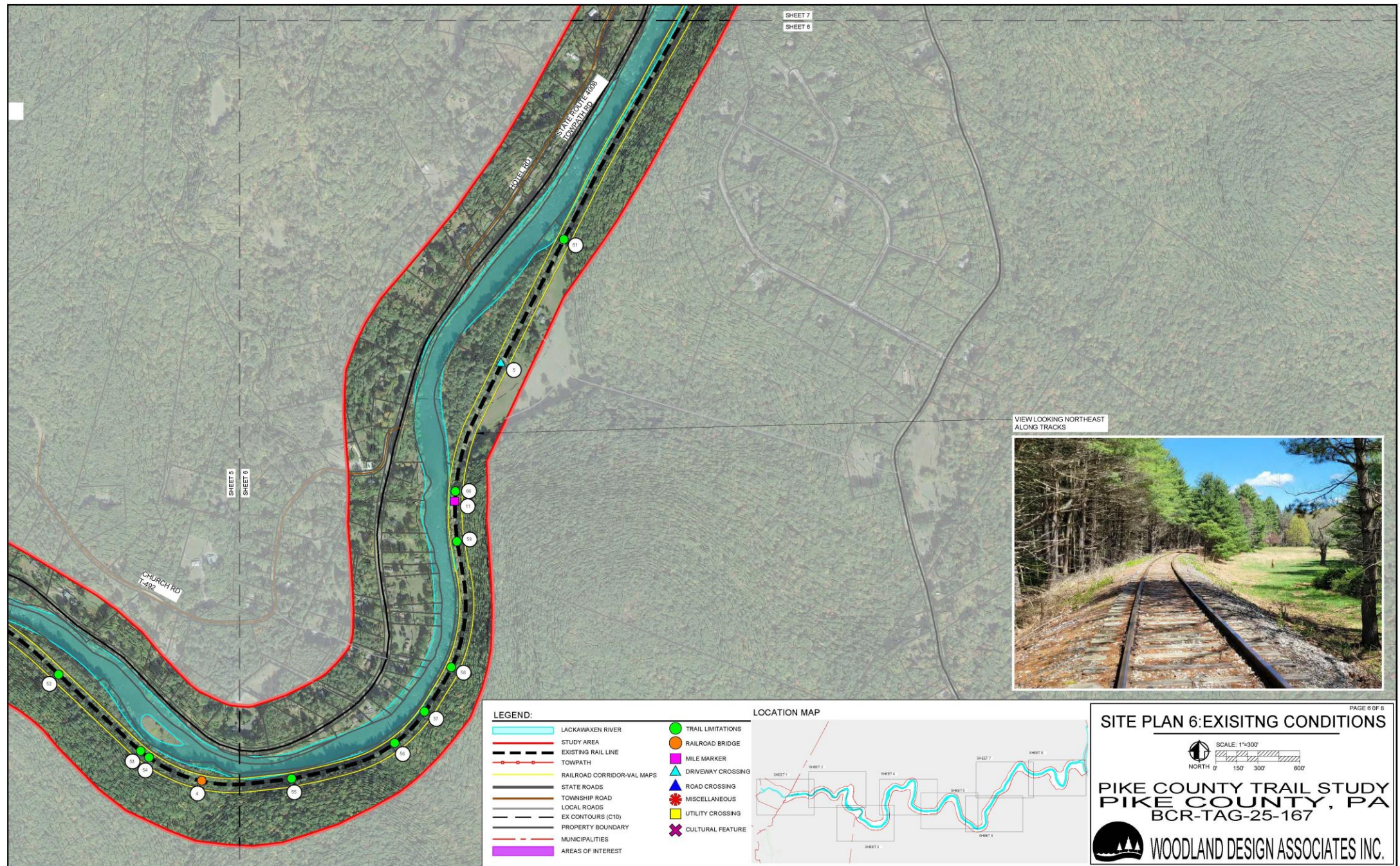
NORTH

0 150' 300' 600'

PIKE COUNTY TRAIL STUDY
PIKE COUNTY, PA
BCR-TAG-25-167

WOODLAND DESIGN ASSOCIATES INC.





VIEW LOOKING NORTHEAST
ALONG TRACKS



LEGEND:

- | | |
|----------------------------|-------------------|
| LACKAWAXEN RIVER | TRAIL LIMITATIONS |
| STUDY AREA | RAILROAD BRIDGE |
| EXISTING RAIL LINE | MILE MARKER |
| TOWNSHIP ROAD | DRIVEWAY CROSSING |
| RAILROAD CORRIDOR-VAL MAPS | MISCELLANEOUS |
| STATE ROADS | UTILITY CROSSING |
| TOWNSHIP ROAD | CULTURAL FEATURE |
| LOCAL ROADS | |
| EX CONTOURS (C10) | |
| PROPERTY BOUNDARY | |
| MUNICIPALITIES | |
| AREAS OF INTEREST | |

LOCATION MAP



SITE PLAN 6: EXISTING CONDITIONS



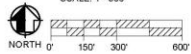
PIKE COUNTY TRAIL STUDY
PIKE COUNTY, PA
BCR-TAG-25-167



WOODLAND DESIGN ASSOCIATES INC.

SITE PLAN 7: EXISTING CONDITIONS

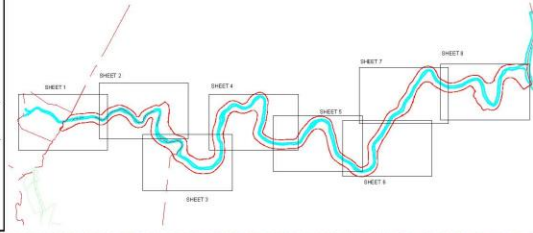
SCALE: 1"=500'



PIKE COUNTY TRAIL STUDY
PIKE COUNTY, PA
BCR-TAG-25-167



LOCATION MAP



LEGEND:

- | | |
|----------------------------|-------------------|
| LACKAWAXEN RIVER | TRAIL LIMITATIONS |
| STUDY AREA | RAILROAD BRIDGE |
| EXISTING RAIL LINE | MILE MARKER |
| TOWPATH | DRIVEWAY CROSSING |
| RAILROAD CORRIDOR-VAL MAPS | ROAD CROSSING |
| STATE ROADS | MISCELLANEOUS |
| TOWNSHIP ROAD | UTILITY CROSSING |
| LOCAL ROADS | CULTURAL FEATURE |
| EX CONTOURS (C10) | |
| PROPERTY BOUNDARY | |
| MUNICIPALITIES | |
| AREAS OF INTEREST | |



RAILROAD CORRIDOR THROUGH FOREST AREA



RAILROAD CORRIDOR THROUGH FOREST AREA

SHEET 7
SHEET 8

RIVERVIEW RD

BEISEL RD

STATE ROUTE 068
VALLEY MILLS

SPRINGWOOD

TOWNSHIP RD

UPPER DELAWARE SCENIC AND
RECREATIONAL RIVER

VIEW LOOKING NORTH
TOWARD ROWLAND

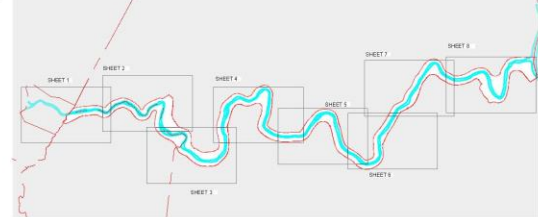
VIEW LOOKING SOUTH WEST
(EXISTING ROAD CROSSING)



LEGEND:

- | | |
|----------------------------|-------------------|
| LACKAWAXEN RIVER | TRAIL LIMITATIONS |
| STUDY AREA | RAILROAD BRIDGE |
| EXISTING RAIL LINE | MILE MARKER |
| TOWNSHIP | DRIVEWAY CROSSING |
| RAILROAD CORRIDOR-VAL MAPS | ROAD CROSSING |
| STATE ROADS | MISCELLANEOUS |
| TOWNSHIP ROAD | UTILITY CROSSING |
| LOCAL ROADS | CULTURAL FEATURE |
| EX CONTOURS (C10) | |
| PROPERTY BOUNDARY | |
| MUNICIPALITIES | |
| AREAS OF INTEREST | |

LOCATION MAP



SITE PLAN 8: EXISTING CONDITIONS

PAGE 8 OF 8

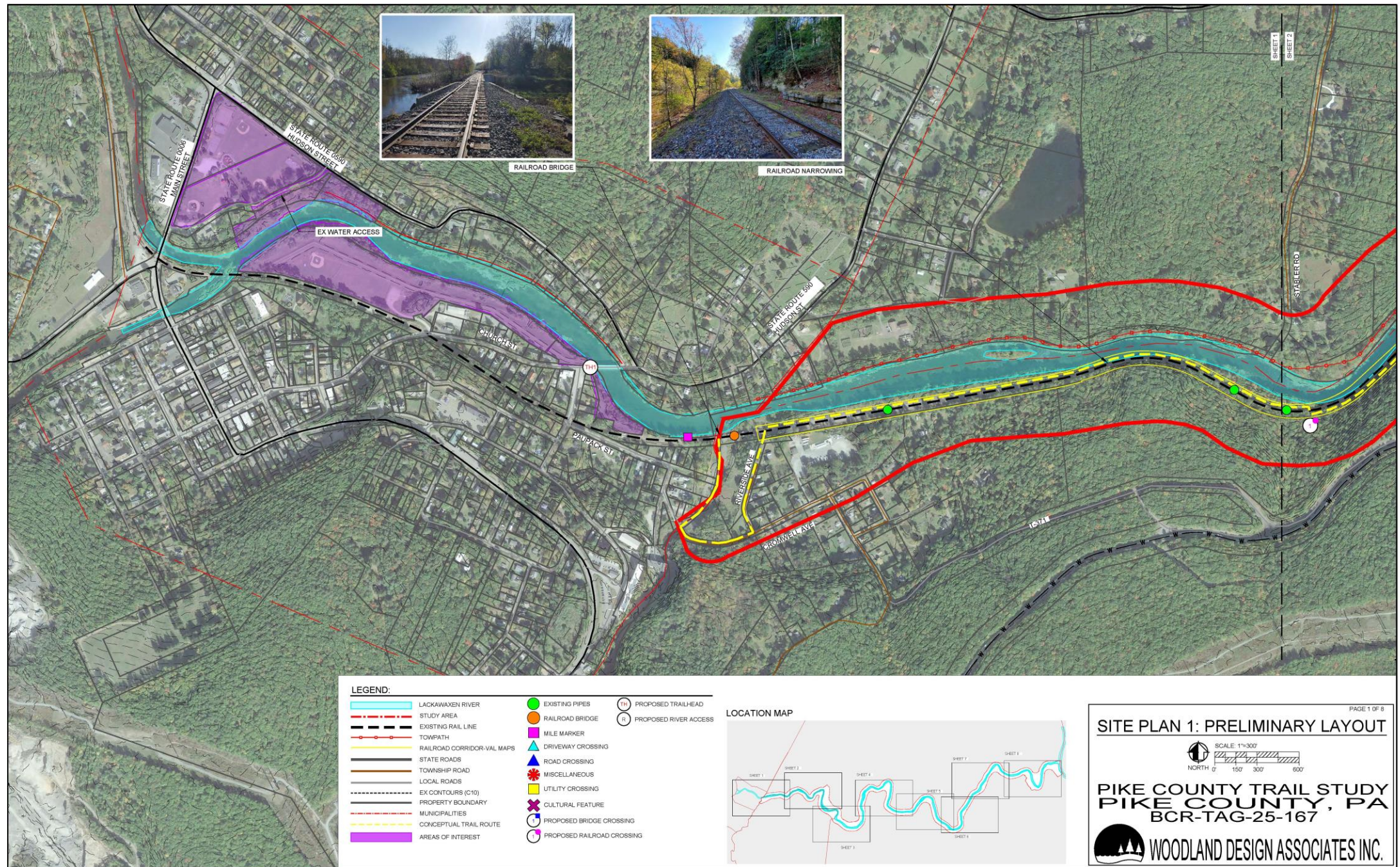
SCALE: 1"=300'

NORTH

0 150 300 600

PIKE COUNTY TRAIL STUDY
PIKE COUNTY, PA
BCR-TAG-25-167

WOODLAND DESIGN ASSOCIATES INC.



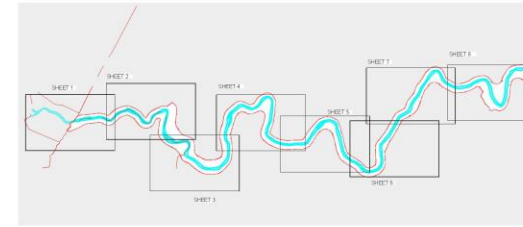


ROCK OUTCROPPING & RAPIDS

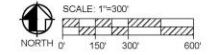
LEGEND:

- | | | |
|----------------------------|----------------------------|-----------------------|
| LACKAWAXEN RIVER | EXISTING PIPES | PROPOSED TRAILHEAD |
| STUDY AREA | RAILROAD BRIDGE | PROPOSED RIVER ACCESS |
| EXISTING RAIL LINE | MILE MARKER | |
| TOWPATH | DRIVEWAY CROSSING | |
| RAILROAD CORRIDOR-VAL MAPS | MISCELLANEOUS | |
| STATE ROADS | UTILITY CROSSING | |
| TOWNSHIP ROAD | ROAD CROSSING | |
| LOCAL ROADS | MISCELLANEOUS | |
| EX CONTOURS (C10) | CULTURAL FEATURE | |
| PROPERTY BOUNDARY | PROPOSED BRIDGE CROSSING | |
| MUNICIPALITIES | PROPOSED RAILROAD CROSSING | |
| CONCEPTUAL TRAIL ROUTE | | |
| AREAS OF INTEREST | | |

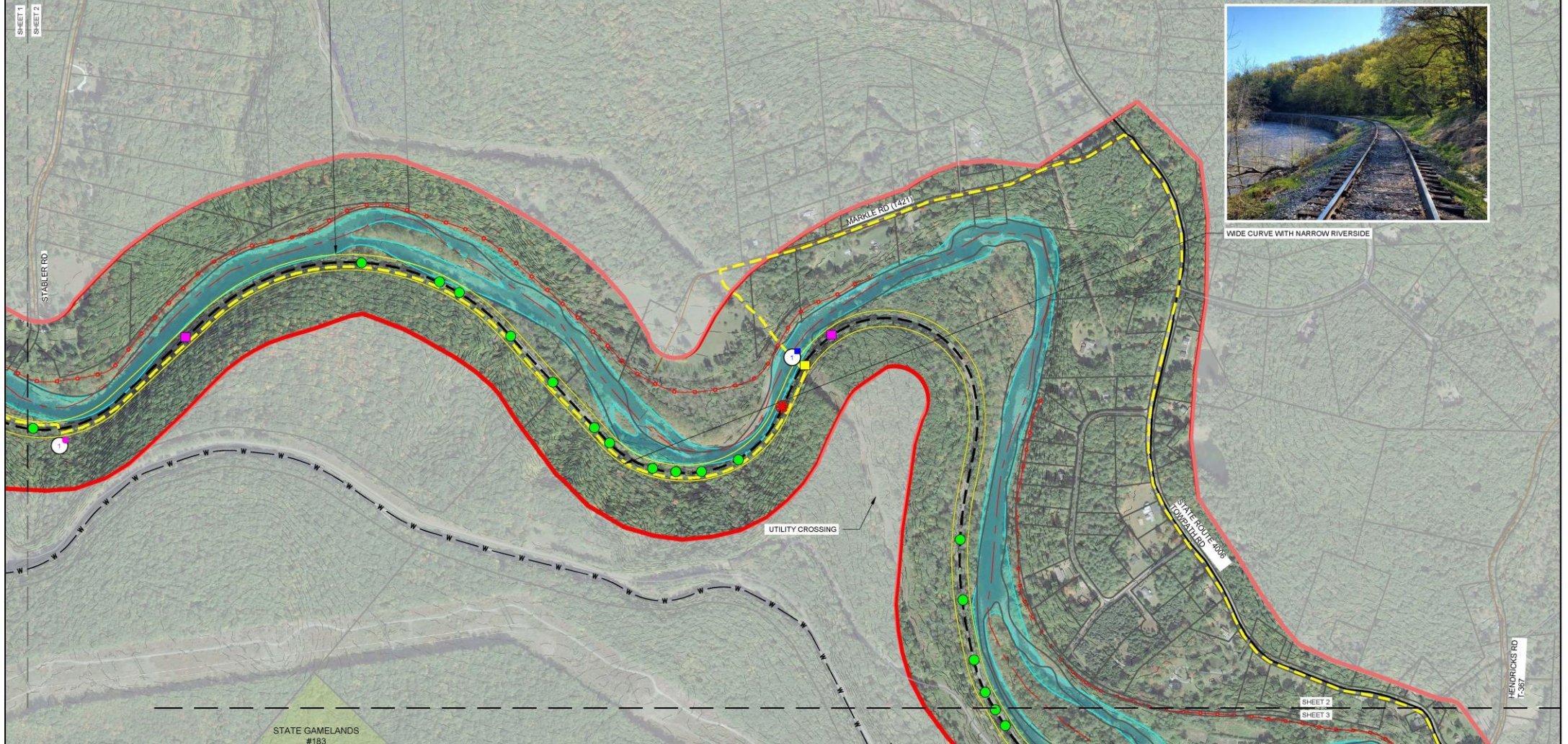
LOCATION MAP



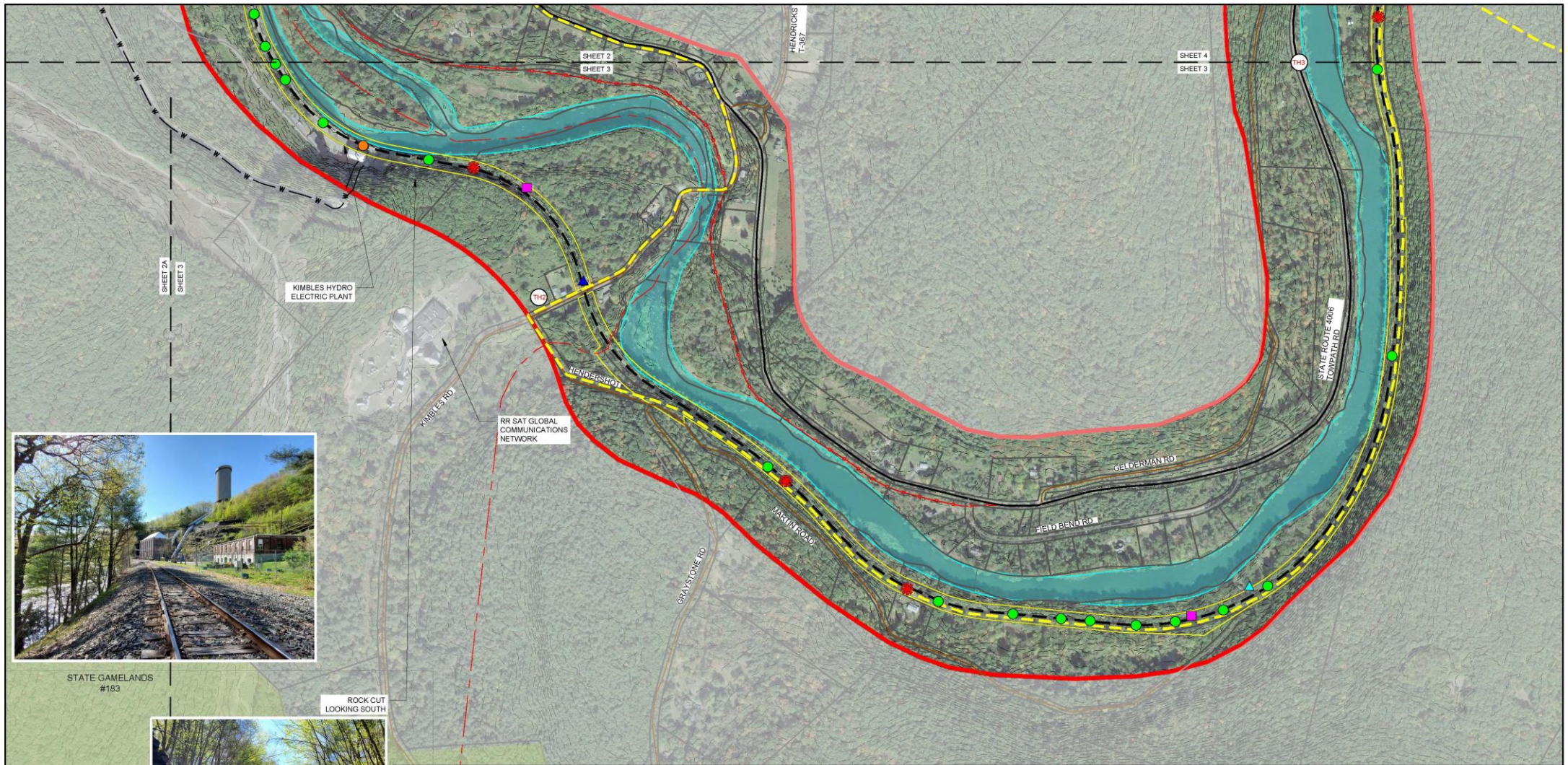
SITE PLAN 2: PRELIMINARY LAYOUT



PIKE COUNTY TRAIL STUDY
PIKE COUNTY, PA
BCR-TAG-25-167



WIDE CURVE WITH NARROW RIVERSIDE



STATE GAMESLANDS
#183

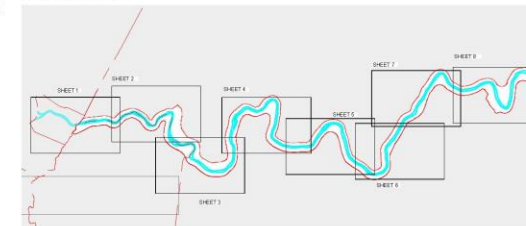


ROCK CUT
LOOKING SOUTH

LEGEND:

	LACKAWAXEN RIVER		EXISTING PIPES		PROPOSED TRAILHEAD
	STUDY AREA		RAILROAD BRIDGE		PROPOSED RIVER ACCESS
	EXISTING RAIL LINE		MILE MARKER		
	TOWNSHIP ROAD		DRIVEWAY CROSSING		
	RAILROAD CORRIDOR-VAL MAPS		ROAD CROSSING		
	STATE ROADS		MISCELLANEOUS		
	TOWNSHIP ROAD		UTILITY CROSSING		
	LOCAL ROADS		CULTURAL FEATURE		
	EX CONTOURS (C10)		PROPOSED BRIDGE CROSSING		
	PROPERTY BOUNDARY		PROPOSED RAILROAD CROSSING		
	MUNICIPALITIES				
	CONCEPTUAL TRAIL ROUTE				
	AREAS OF INTEREST				

LOCATION MAP



PAGE 3 OF 8

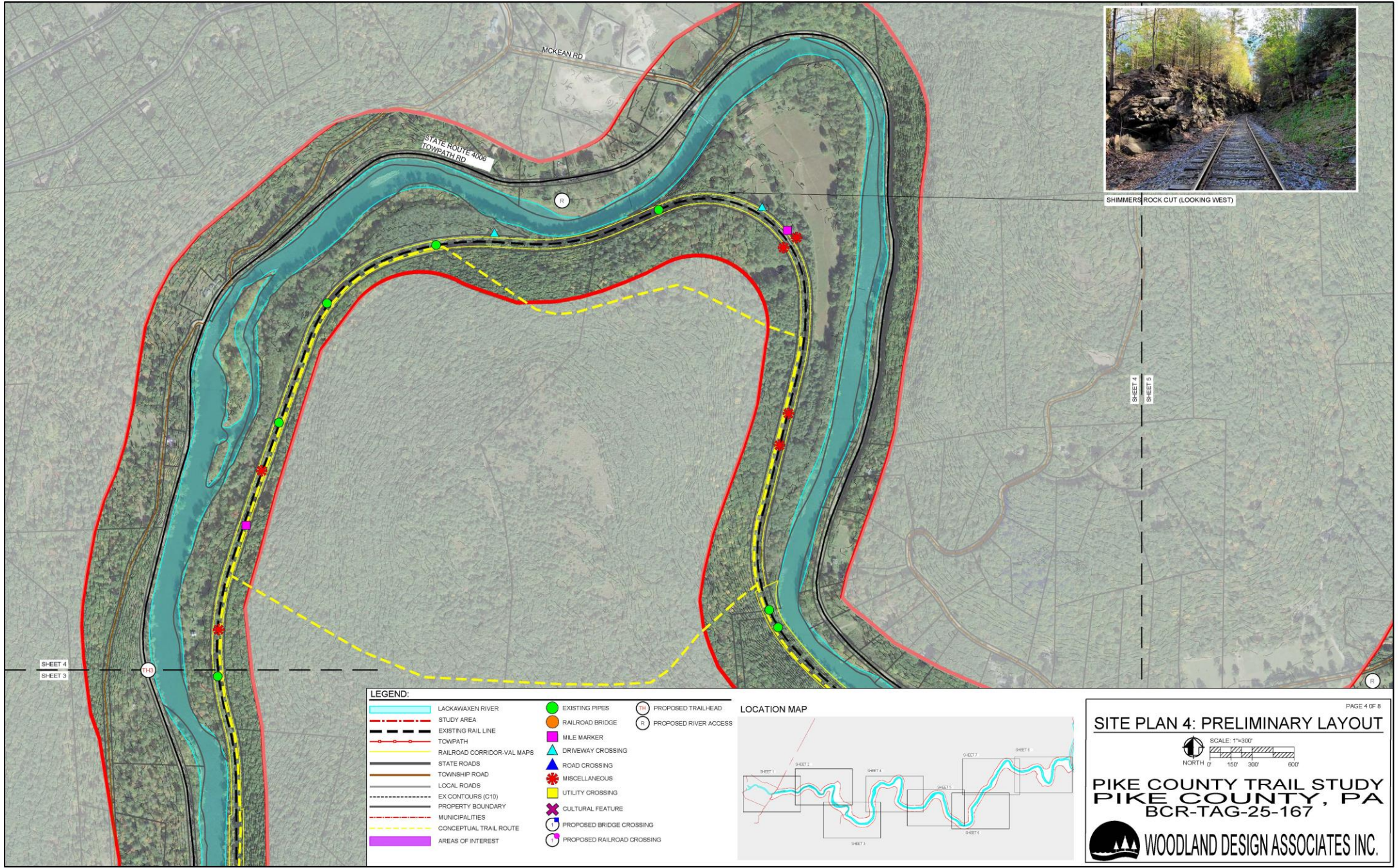
SITE PLAN 3: PRELIMINARY LAYOUT

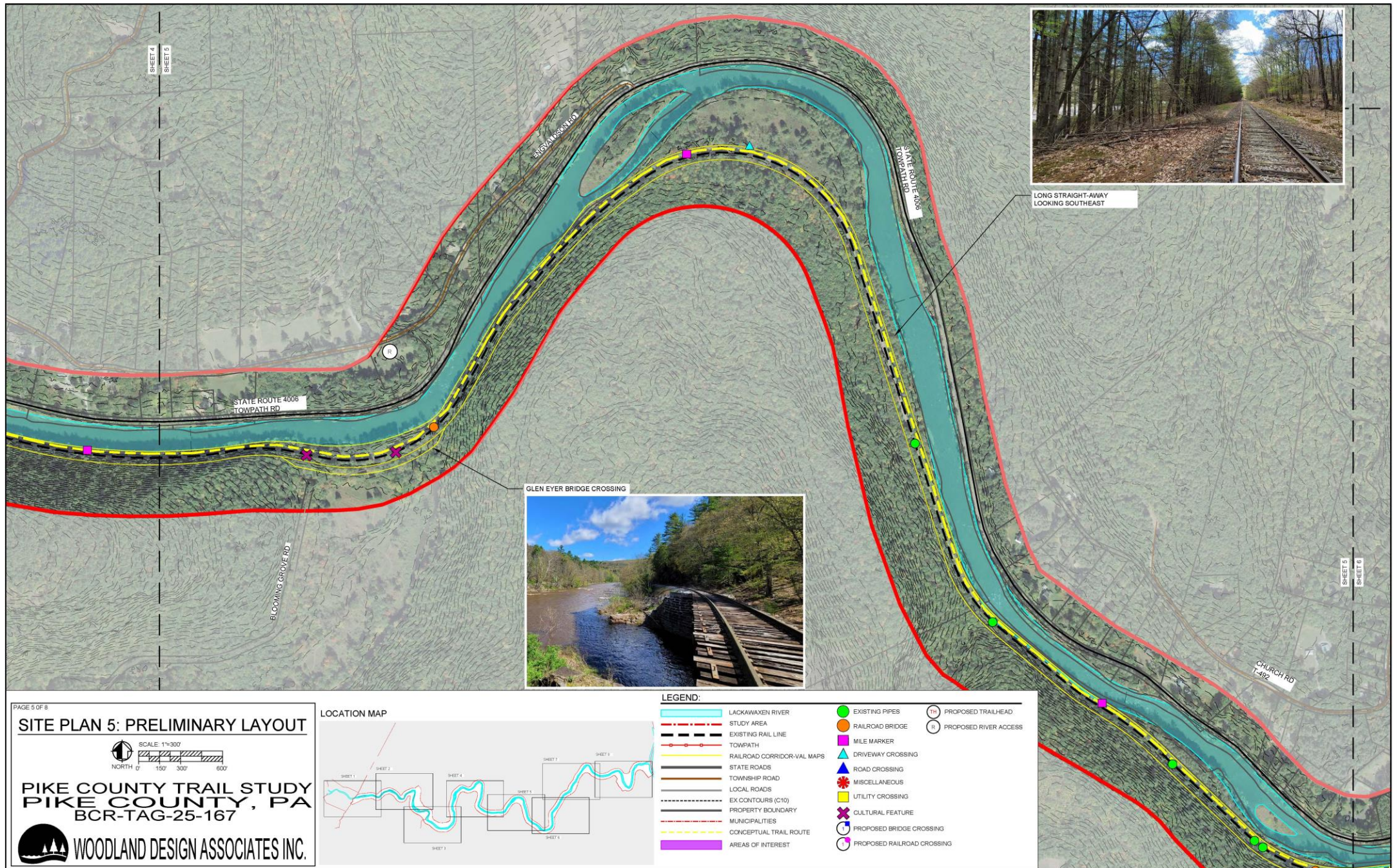
SCALE: 1"=300'

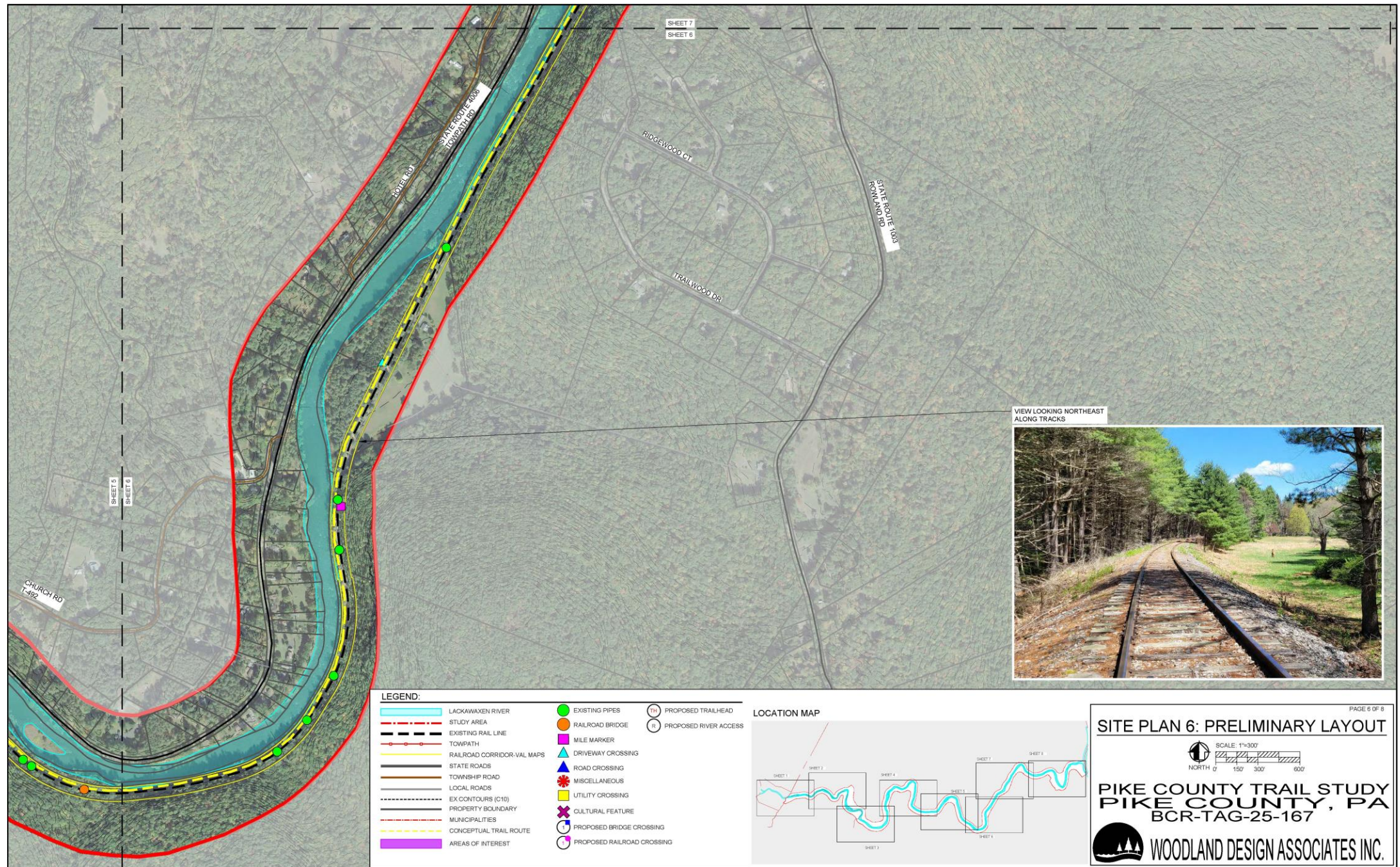
NORTH

PIKE COUNTY TRAIL STUDY
PIKE COUNTY, PA
BCR-TAG-25-167

WOODLAND DESIGN ASSOCIATES INC.







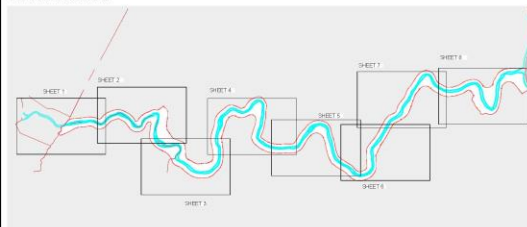
SITE PLAN 7: PRELIMINARY LAYOUT



PIKE COUNTY TRAIL STUDY
PIKE COUNTY, PA
BCR-TAG-25-167

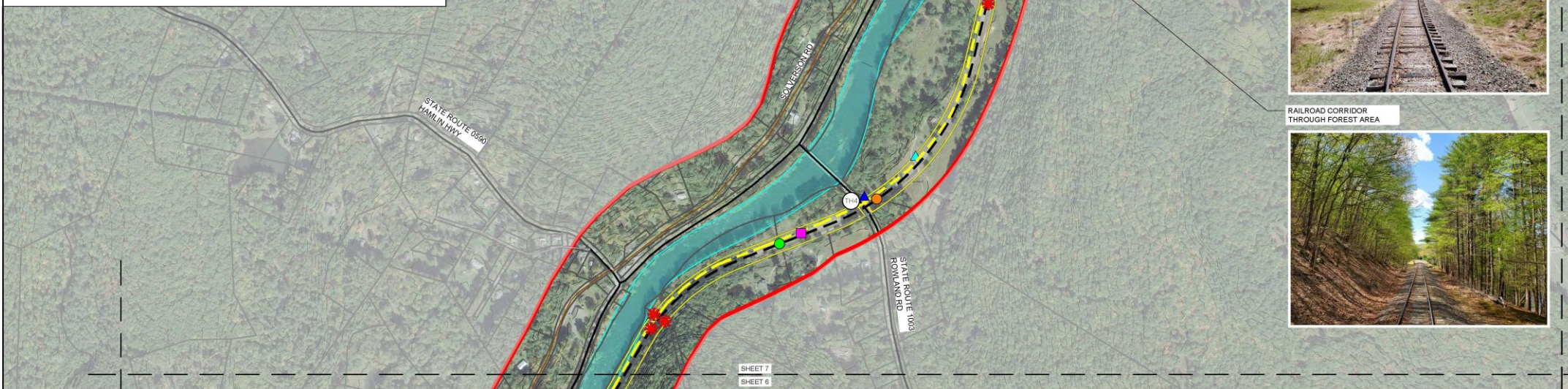


LOCATION MAP



LEGEND:

	LACKAWAXEN RIVER		EXISTING PIPES		PROPOSED TRAILHEAD
	STUDY AREA		RAILROAD BRIDGE		PROPOSED RIVER ACCESS
	EXISTING RAIL LINE		MILE MARKER		
	TOWPATH		DRIVEWAY CROSSING		
	RAILROAD CORRIDOR-VAL MAPS		ROAD CROSSING		
	STATE ROADS		MISCELLANEOUS		
	TOWNSHIP ROAD		UTILITY CROSSING		
	LOCAL ROADS		CULTURAL FEATURE		
	EX CONTOURS (C10)		PROPOSED BRIDGE CROSSING		
	PROPERTY BOUNDARY		PROPOSED RAILROAD CROSSING		
	MUNICIPALITIES				
	CONCEPTUAL TRAIL ROUTE				
	AREAS OF INTEREST				

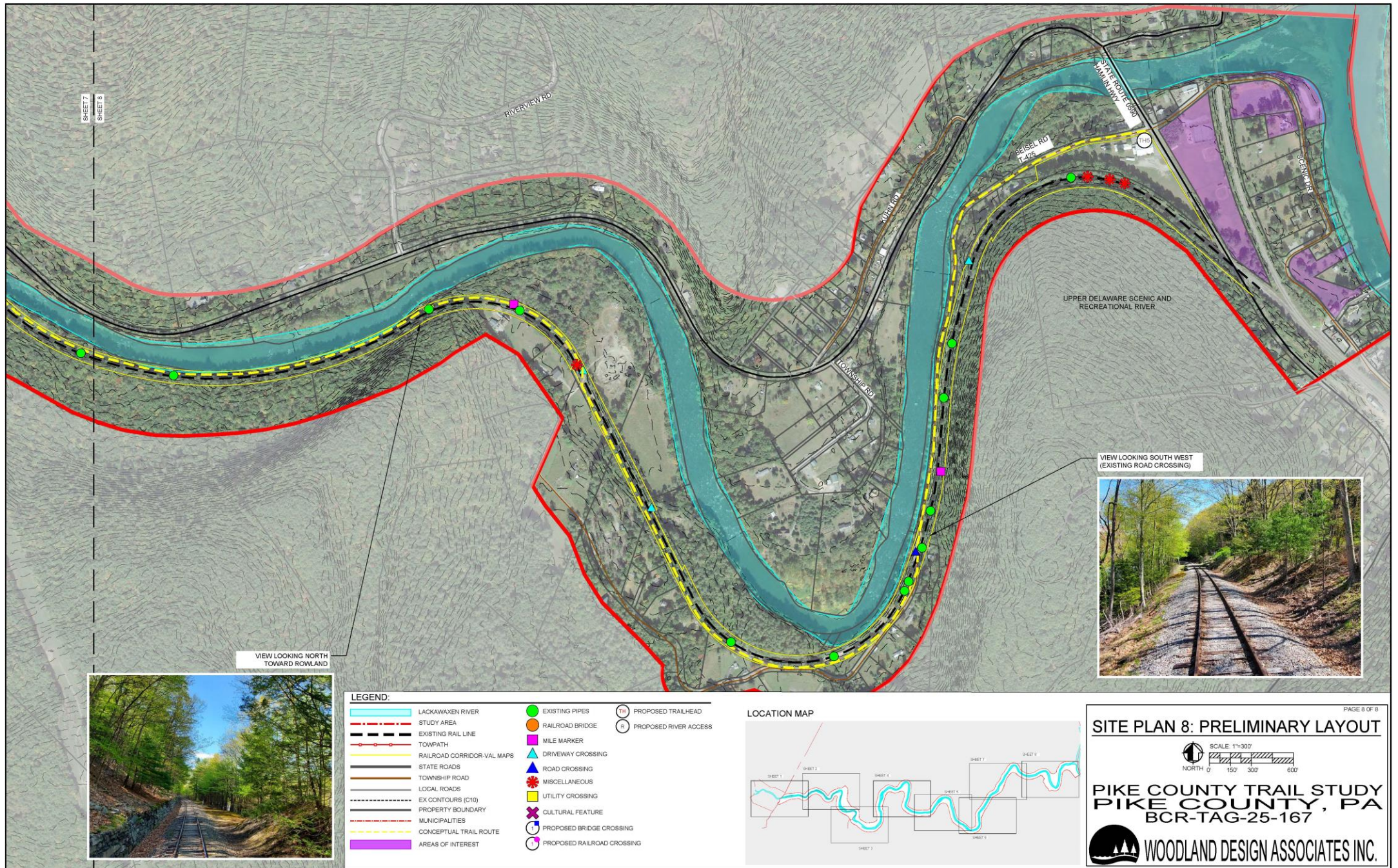


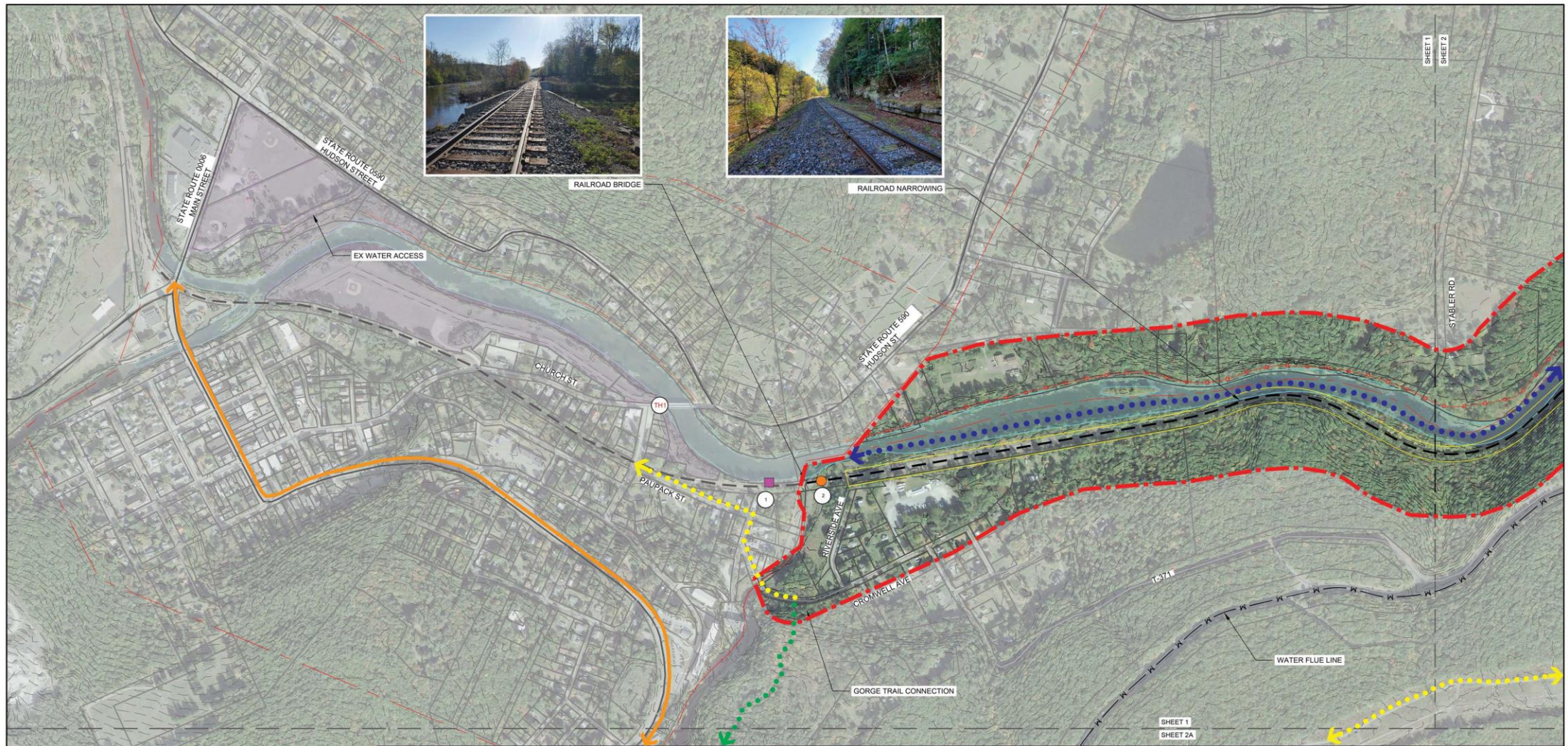
RAILROAD CORRIDOR
THROUGH FOREST AREA



GAS LINE CROSSING

SHEET 7
SHEET 8SHEET 7
SHEET 6





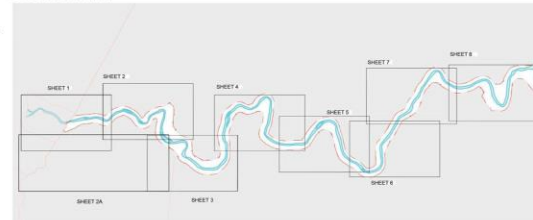
LEGEND:

- LACKAWAXEN RIVER
- STUDY AREA
- EXISTING RAIL LINE
- HISTORIC TOWPATH LOCATION
- RAILROAD CORRIDOR-VAL MAPS
- STATE ROADS
- OTHER ROADS
- EX CONTOURS (C10)
- PROPERTY BOUNDARY
- MUNICIPALITIES
- PROPOSED GORGE TRAIL
- PROPOSED MULTI USE TRAIL
- EXISTING PADDLE TRAIL
- EXISTING PA BIKE ROUTE Y
- AREAS OF INTEREST

- (TH) PROPOSED TRAILHEAD
- (P) PROPOSED PARKING AREA
- (P) PHYSICAL INVENTORY ASSESSMENT LEGEND:
- (G) GENERAL TRAIL LIMITATIONS
- (R) RAILROAD BRIDGE
- (M) MILE MARKER
- (D) DRIVEWAY CROSSING
- (R) ROAD CROSSING
- (M) MISCELLANEOUS
- (U) UTILITY CROSSING

Trail Section	ID #	Location	Notes	ADA Accessible
Hawley to Kimbles	1	41.47466, -75.17061	Mile marker JHC 125	N/A
Hawley to Kimbles	2	41.47473, -75.16929	Existing railroad bridge	Yes

LOCATION MAP



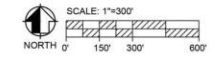
SITE PLAN 1: PROPOSED TRAIL ROUTE



PIKE COUNTY TRAIL STUDY
PIKE COUNTY, PA
BCR-TAG-25-167

WOODLAND DESIGN ASSOCIATES INC.

SITE PLAN 2: PROPOSED TRAIL ROUTE



PIKE COUNTY TRAIL STUDY
PIKE COUNTY, PA
BCR-TAG-25-167

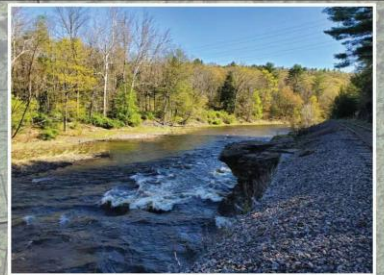
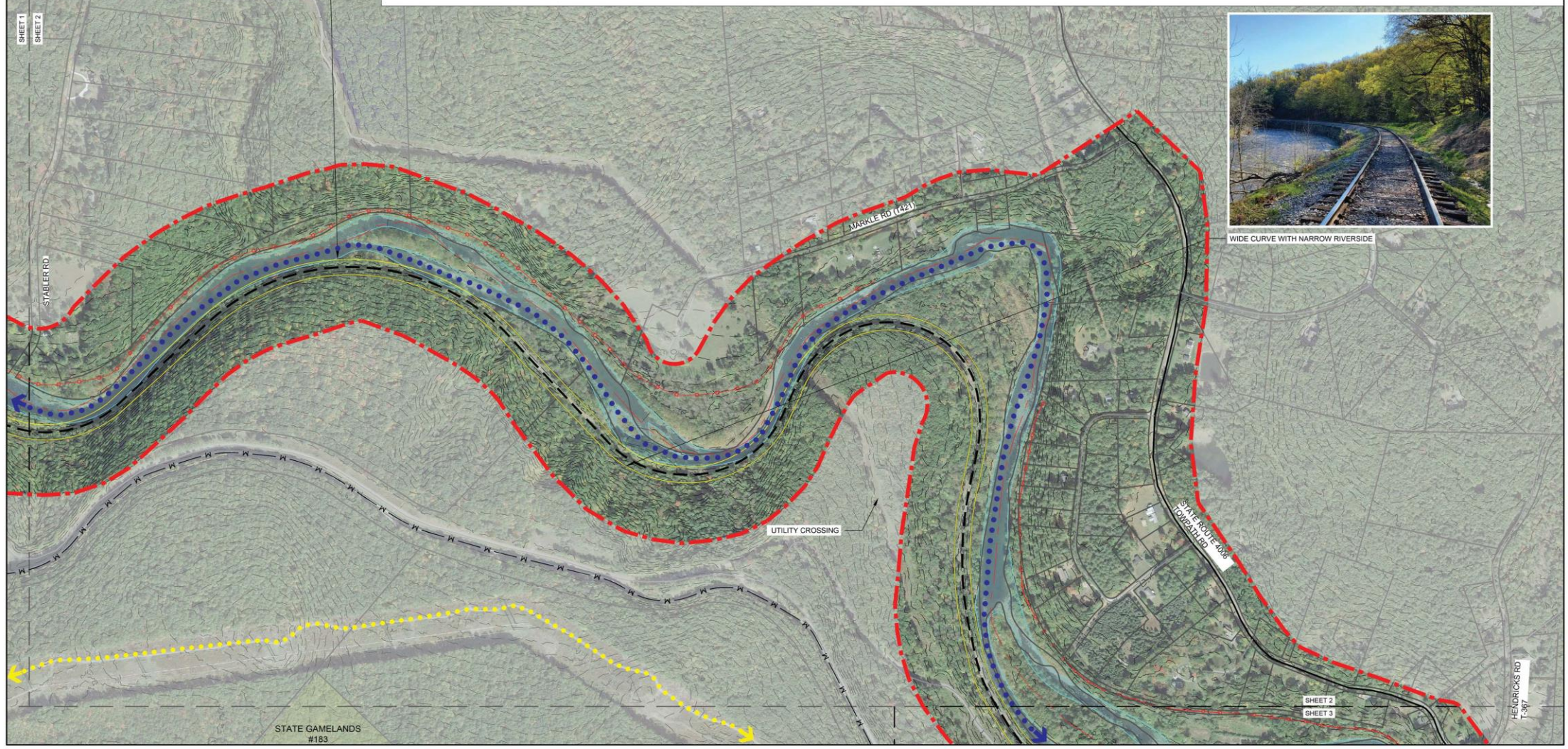
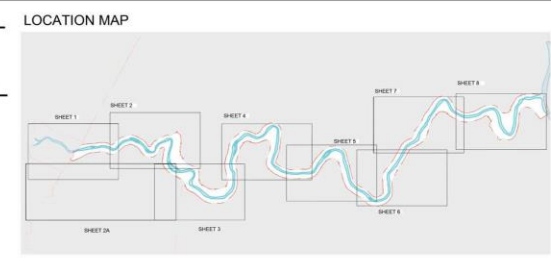


LEGEND:

- LACKAWAXEN RIVER
- STUDY AREA
- EXISTING RAIL LINE
- HISTORIC TOWPATH LOCATION
- RAILROAD CORRIDOR-VAL MAPS
- STATE ROADS
- OTHER ROADS
- EX CONTOURS (C10)
- PROPERTY BOUNDARY
- MUNICIPALITIES
- PROPOSED GORGE TRAIL
- PROPOSED MULTI USE TRAIL
- EXISTING PADDLE TRAIL
- EXISTING PA BIKE ROUTE Y
- AREAS OF INTEREST

PHYSICAL INVENTORY ASSESSMENT LEGEND:

- PROPOSED TRAILHEAD
- PROPOSED PARKING AREA
- GENERAL TRAIL LIMITATIONS
- RAILROAD BRIDGE
- MILE MARKER
- DRIVEWAY CROSSING
- ROAD CROSSING
- MISCELLANEOUS
- UTILITY CROSSING



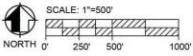
ROCK OUTCROPPING & RAPIDS



WIDE CURVE WITH NARROW RIVERSIDE

STATE GAMESLANDS
#183

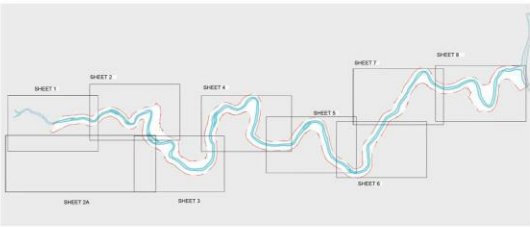
SITE PLAN 2A: PROPOSED TRAIL ROUTE



PIKE COUNTY TRAIL STUDY
PIKE COUNTY, PA
BCR-TAG-25-167



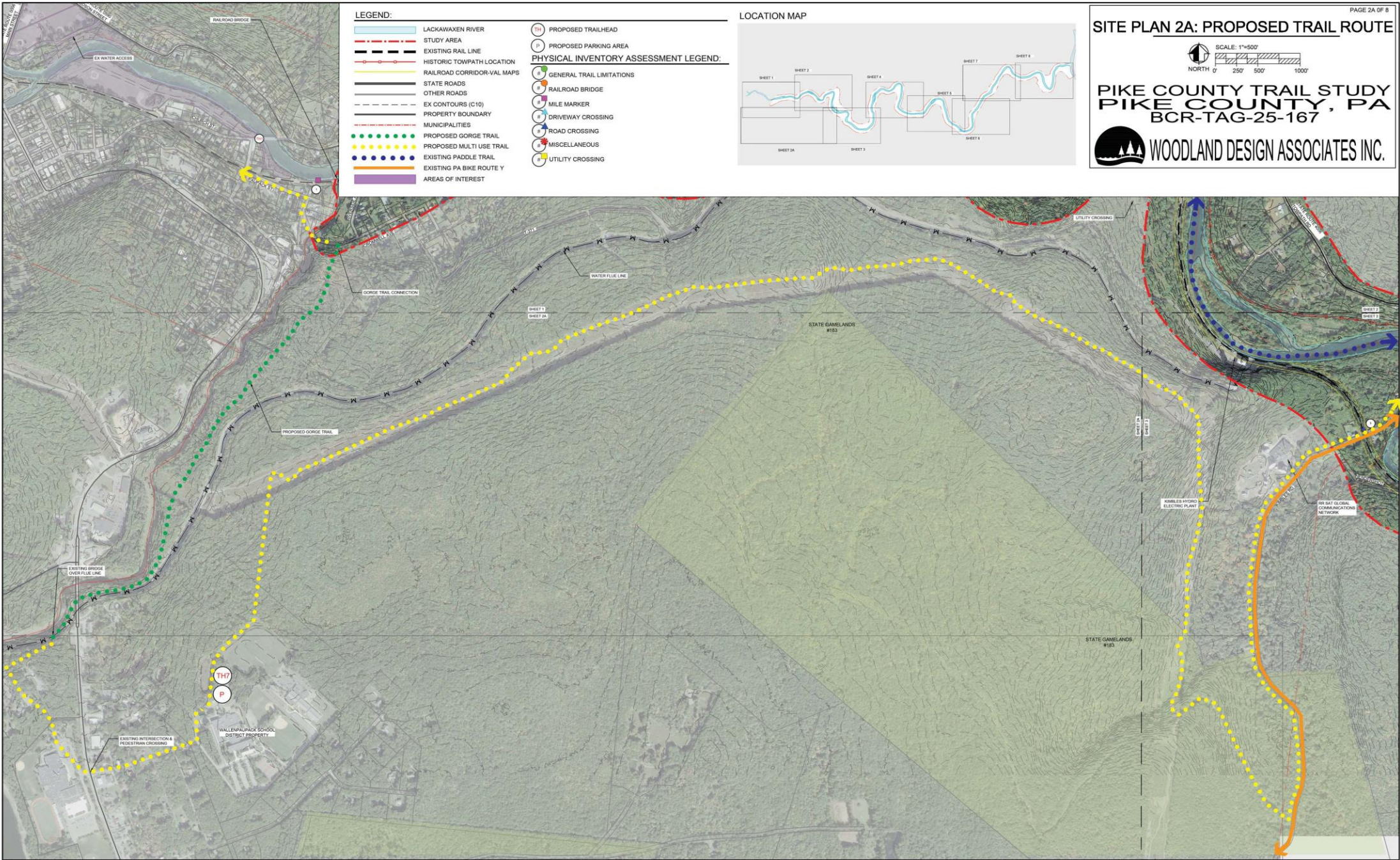
LOCATION MAP

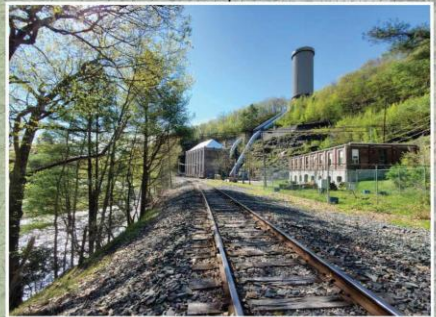
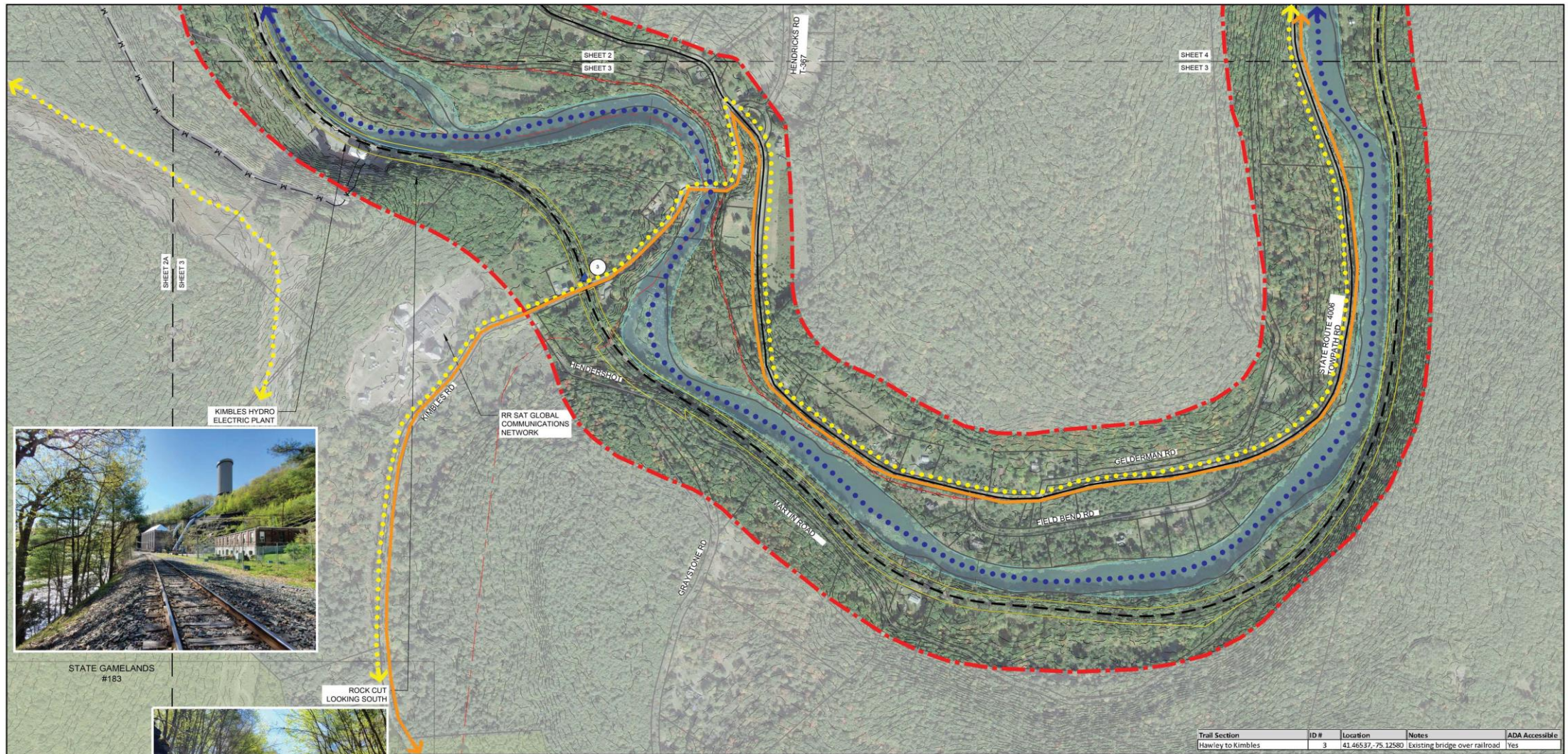


LEGEND:

- LACKAWAXEN RIVER
- STUDY AREA
- EXISTING RAIL LINE
- HISTORIC TOWPATH LOCATION
- RAILROAD CORRIDOR-VAL MAPS
- STATE ROADS
- OTHER ROADS
- EX CONTOURS (C10)
- PROPERTY BOUNDARY
- MUNICIPALITIES
- PROPOSED GORGE TRAIL
- PROPOSED MULTI USE TRAIL
- EXISTING PADDLE TRAIL
- EXISTING PA BIKE ROUTE Y
- AREAS OF INTEREST

- PHYSICAL INVENTORY ASSESSMENT LEGEND:
- PROPOSED TRAILHEAD
 - PROPOSED PARKING AREA
 - GENERAL TRAIL LIMITATIONS
 - RAILROAD BRIDGE
 - MILE MARKER
 - DRIVEWAY CROSSING
 - ROAD CROSSING
 - MISCELLANEOUS
 - UTILITY CROSSING





STATE GAMELANDS #183



ROCK CUT LOOKING SOUTH

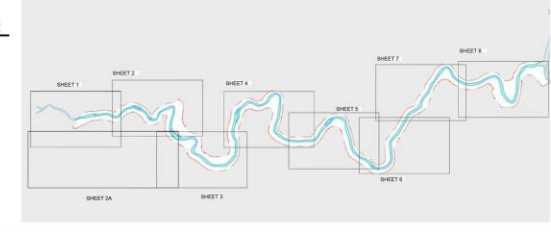
LEGEND:

- LACKAWAXEN RIVER
- STUDY AREA
- EXISTING RAIL LINE
- HISTORIC TOWPATH LOCATION
- RAILROAD CORRIDOR-VAL MAPS
- STATE ROADS
- OTHER ROADS
- EX CONTOURS (C10)
- PROPERTY BOUNDARY
- MUNICIPALITIES
- PROPOSED GORGE TRAIL
- PROPOSED MULTI USE TRAIL
- EXISTING PADDOLE TRAIL
- EXISTING PA BIKE ROUTE Y
- AREAS OF INTEREST

PHYSICAL INVENTORY ASSESSMENT LEGEND:

- PROPOSED TRAILHEAD
- PROPOSED PARKING AREA
- GENERAL TRAIL LIMITATIONS
- RAILROAD BRIDGE
- MILE MARKER
- DRIVEWAY CROSSING
- ROAD CROSSING
- MISCELLANEOUS
- UTILITY CROSSING

LOCATION MAP



Trail Section	ID #	Location	Notes	ADA Accessible
Hawley to Kimbles	3	41.46537, -75.12580	Existing bridge over railroad	Yes

PAGE 3 OF 8

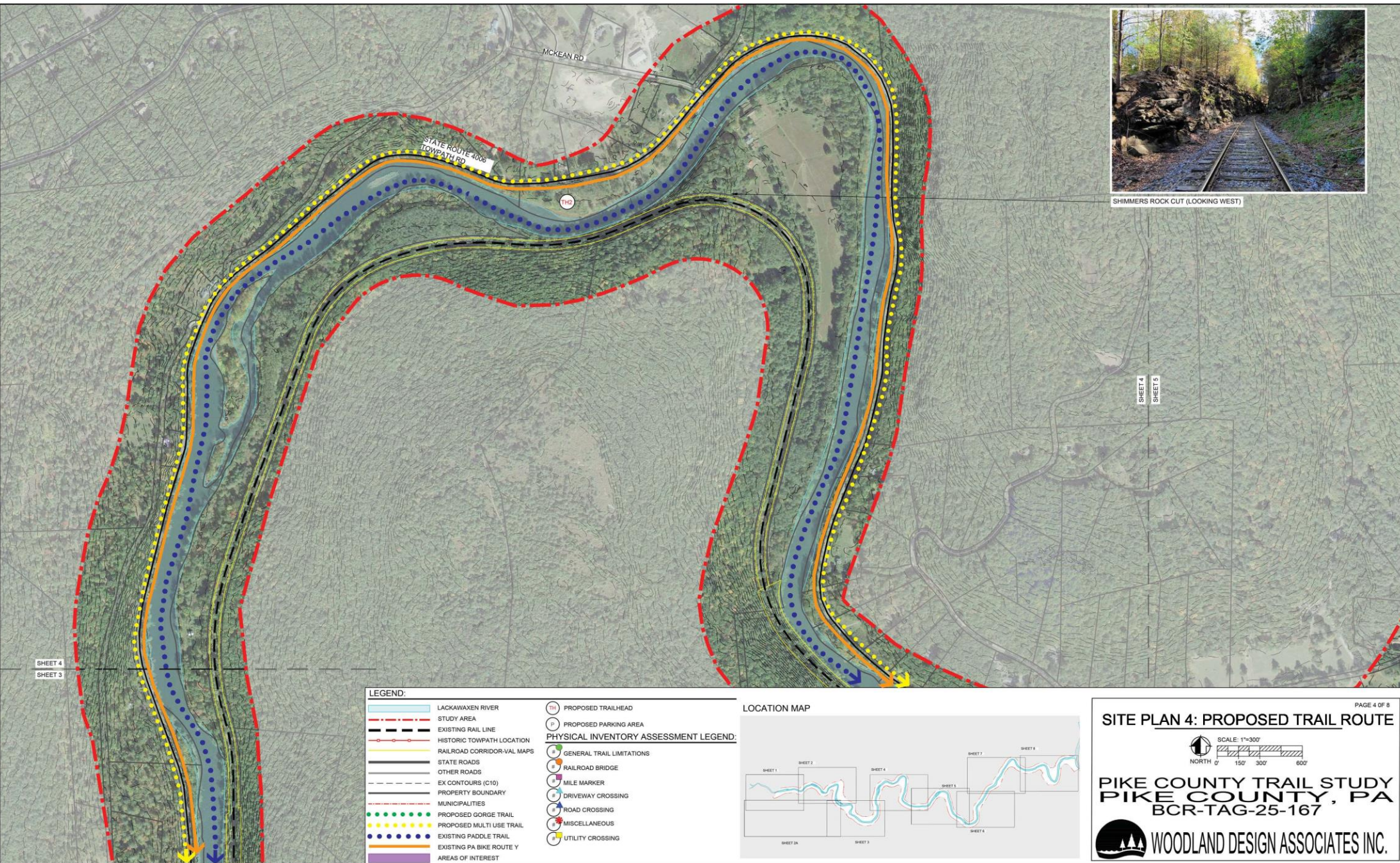
SITE PLAN 3: PROPOSED TRAIL ROUTE

SCALE: 1"=300'

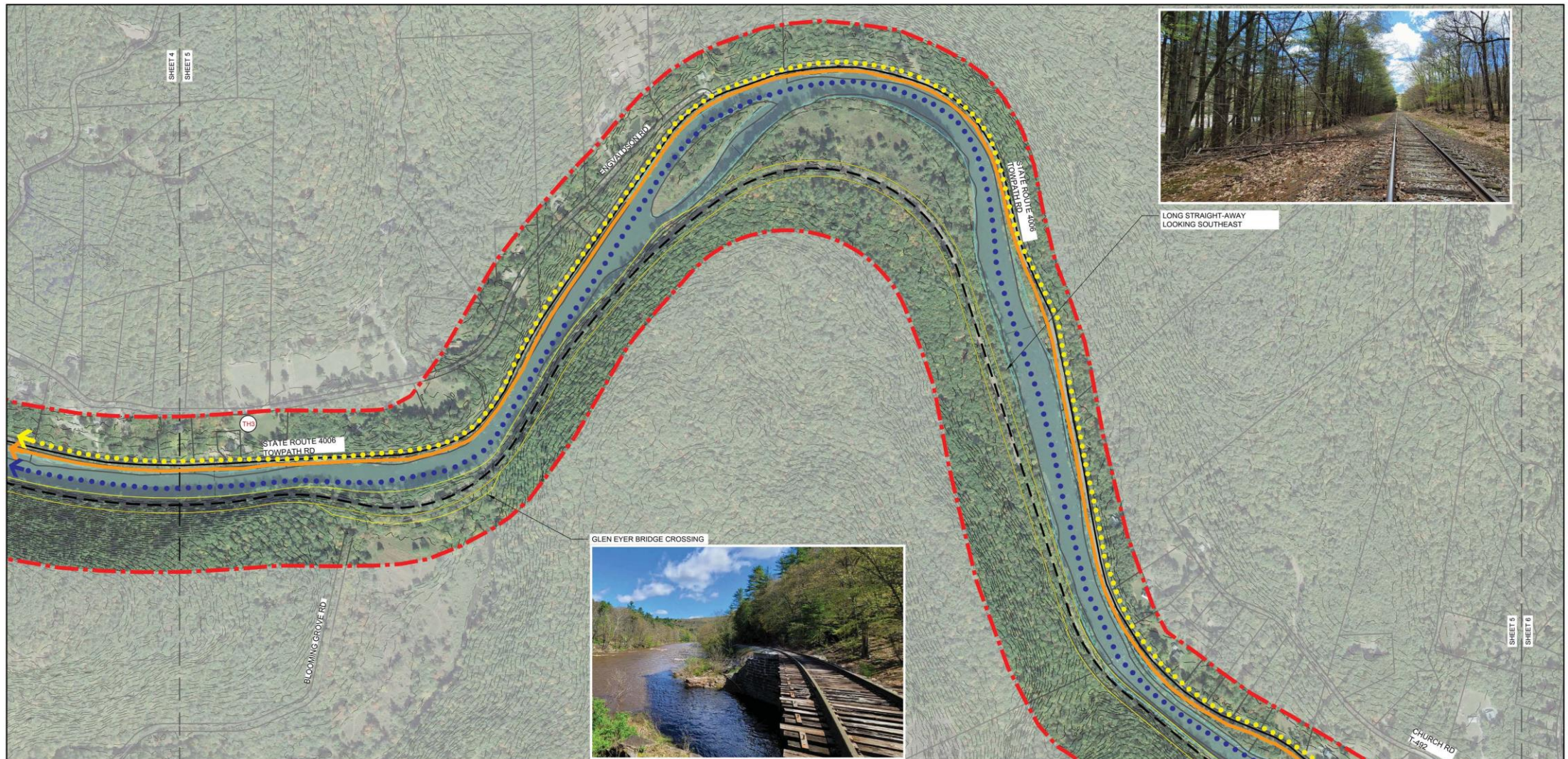
NORTH

PIKE COUNTY TRAIL STUDY
PIKE COUNTY, PA
BCR-TAG-25-167

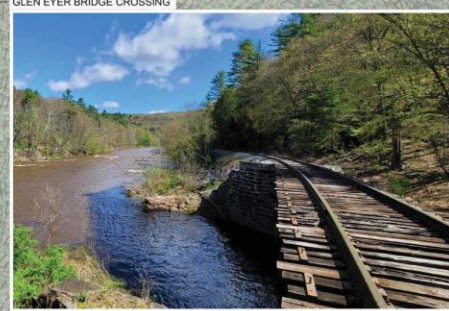
WOODLAND DESIGN ASSOCIATES INC.



SHIMMERS ROCK CUT (LOOKING WEST)



LONG STRAIGHT-AWAY
LOOKING SOUTHEAST



GLEN EYRE BRIDGE CROSSING

PAGE 5 OF 8

SITE PLAN 5: PROPOSED TRAIL ROUTE

SCALE: 1"=300'

NORTH

PIKE COUNTY TRAIL STUDY
PIKE COUNTY, PA
BCR-TAG-25-167

WOODLAND DESIGN ASSOCIATES INC.

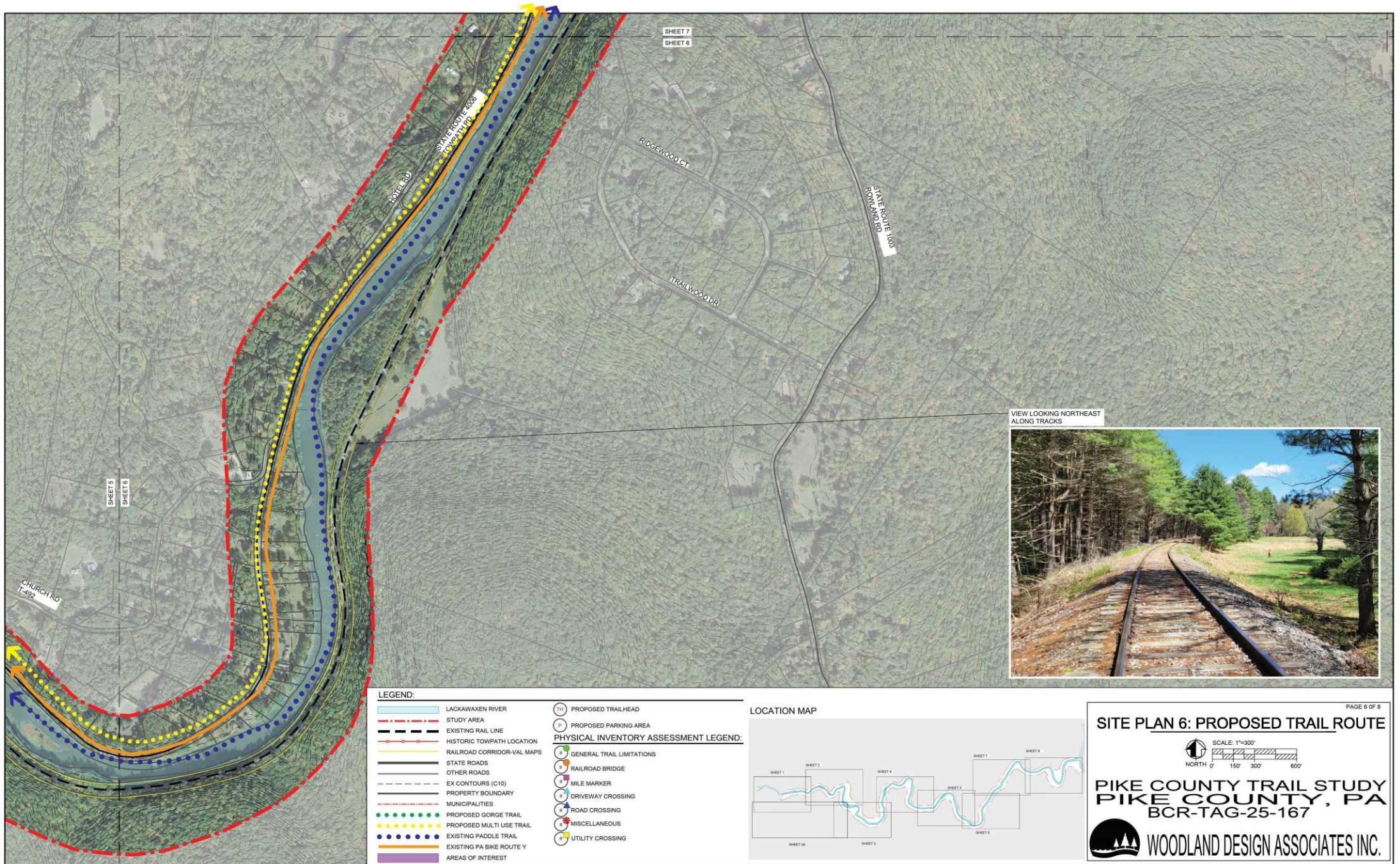
LOCATION MAP

LEGEND:

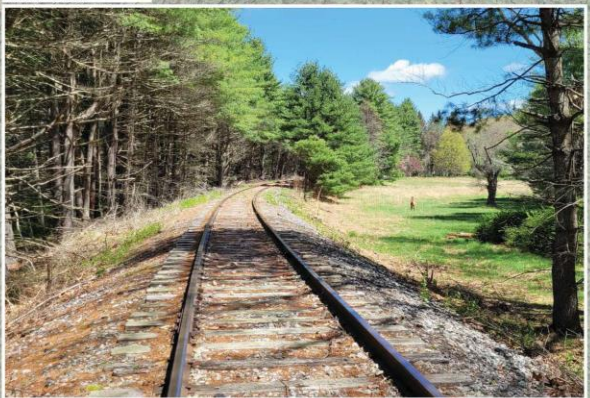
- LACKAWAXEN RIVER
- STUDY AREA
- EXISTING RAIL LINE
- HISTORIC TOWPATH LOCATION
- RAILROAD CORRIDOR-VAL MAPS
- STATE ROADS
- OTHER ROADS
- EX CONTOURS (C10)
- PROPERTY BOUNDARY
- MUNICIPALITIES
- PROPOSED GORGE TRAIL
- PROPOSED MULTI USE TRAIL
- EXISTING PADOLE TRAIL
- EXISTING PA BIKE ROUTE Y
- AREAS OF INTEREST

PHYSICAL INVENTORY ASSESSMENT LEGEND:

- PROPOSED TRAILHEAD
- PROPOSED PARKING AREA
- GENERAL TRAIL LIMITATIONS
- RAILROAD BRIDGE
- MILE MARKER
- DRIVEWAY CROSSING
- ROAD CROSSING
- MISCELLANEOUS
- UTILITY CROSSING



VIEW LOOKING NORTHEAST
ALONG TRACKS



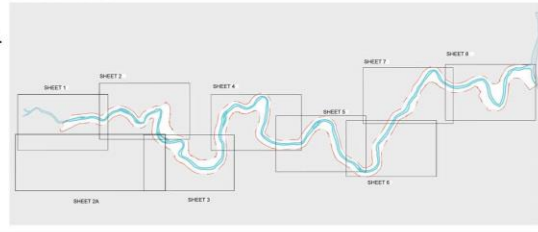
LEGEND:

- LACKAWAXEN RIVER
- STUDY AREA
- EXISTING RAIL LINE
- HISTORIC TOWPATH LOCATION
- RAILROAD CORRIDOR-VAL MAPS
- STATE ROADS
- OTHER ROADS
- EX CONTOURS (C10)
- PROPERTY BOUNDARY
- MUNICIPALITIES
- PROPOSED GORGE TRAIL
- PROPOSED MULTI USE TRAIL
- EXISTING PADOLE TRAIL
- EXISTING PA BIKE ROUTE Y
- AREAS OF INTEREST

- PROPOSED TRAILHEAD
- PROPOSED PARKING AREA
- GENERAL TRAIL LIMITATIONS
- RAILROAD BRIDGE
- MILE MARKER
- DRIVEWAY CROSSING
- ROAD CROSSING
- MISCELLANEOUS
- UTILITY CROSSING

PHYSICAL INVENTORY ASSESSMENT LEGEND:

LOCATION MAP



SITE PLAN 6: PROPOSED TRAIL ROUTE

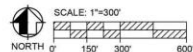
SCALE: 1"=300'

NORTH

PIKE COUNTY TRAIL STUDY
PIKE COUNTY, PA
BCR-TAG-25-167

WOODLAND DESIGN ASSOCIATES INC.

SITE PLAN 7: PROPOSED TRAIL ROUTE

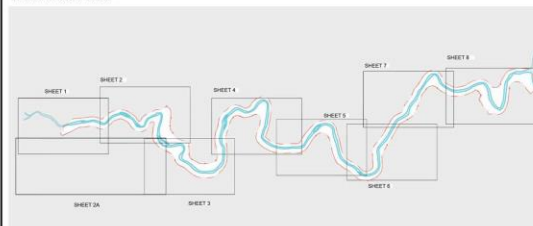


PIKE COUNTY TRAIL STUDY
PIKE COUNTY, PA
BCR-TAG-25-167



WOODLAND DESIGN ASSOCIATES INC.

LOCATION MAP



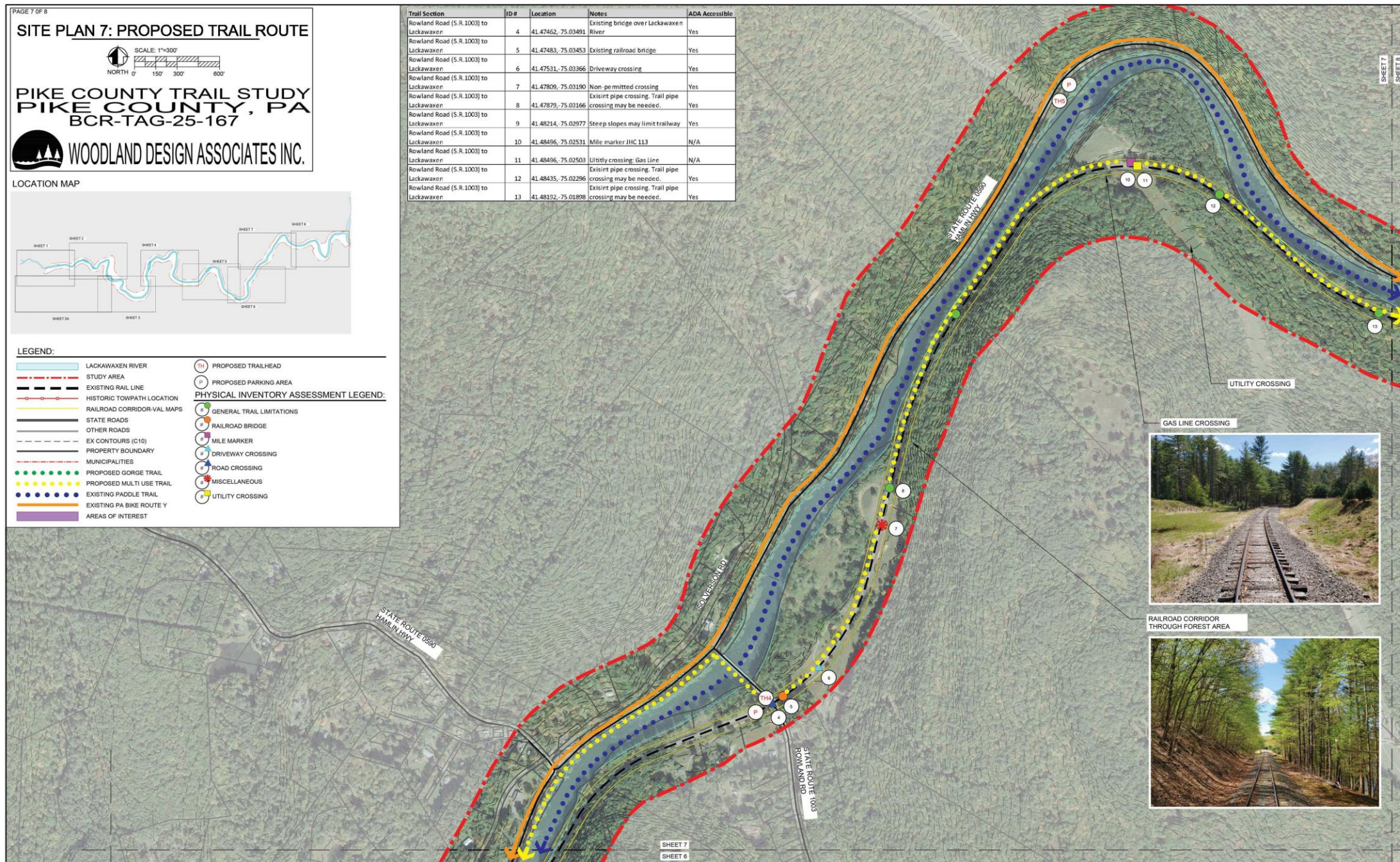
LEGEND:

- LACKAWAXEN RIVER
- STUDY AREA
- EXISTING RAIL LINE
- HISTORIC TOWPATH LOCATION
- RAILROAD CORRIDOR-VAL MAPS
- STATE ROADS
- OTHER ROADS
- EX CONTOURS (C10)
- PROPERTY BOUNDARY
- MUNICIPALITIES
- PROPOSED GORGE TRAIL
- PROPOSED MULTI USE TRAIL
- EXISTING PADDLE TRAIL
- EXISTING PA BIKE ROUTE Y
- AREAS OF INTEREST

- PROPOSED TRAILHEAD
- PROPOSED PARKING AREA
- GENERAL TRAIL LIMITATIONS
- RAILROAD BRIDGE
- MILE MARKER
- DRIVEWAY CROSSING
- ROAD CROSSING
- MISCELLANEOUS
- UTILITY CROSSING

PHYSICAL INVENTORY ASSESSMENT LEGEND:

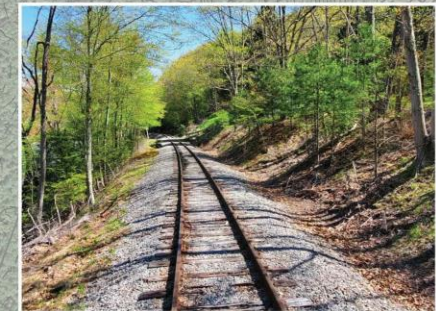
Trail Section	ID #	Location	Notes	ADA Accessible
Rowland Road (S.R.1003) to Lackawaxen	4	41.47462, 75.03491	Existing bridge over Lackawaxen River	Yes
Rowland Road (S.R.1003) to Lackawaxen	5	41.47483, 75.03453	Existing railroad bridge	Yes
Rowland Road (S.R.1003) to Lackawaxen	6	41.47531, 75.03366	Driveway crossing	Yes
Rowland Road (S.R.1003) to Lackawaxen	7	41.47809, 75.03190	Non-permitted crossing	Yes
Rowland Road (S.R.1003) to Lackawaxen	8	41.47879, 75.03166	Exist pipe crossing. Trail pipe crossing may be needed.	Yes
Rowland Road (S.R.1003) to Lackawaxen	9	41.48214, 75.02977	Steep slopes may limit trailway	Yes
Rowland Road (S.R.1003) to Lackawaxen	10	41.48496, 75.02531	Mile marker JHC 113	N/A
Rowland Road (S.R.1003) to Lackawaxen	11	41.48496, 75.02503	Utility crossing: Gas Line	N/A
Rowland Road (S.R.1003) to Lackawaxen	12	41.48435, 75.02296	Exist pipe crossing. Trail pipe crossing may be needed.	Yes
Rowland Road (S.R.1003) to Lackawaxen	13	41.48192, 75.01898	Exist pipe crossing. Trail pipe crossing may be needed.	Yes

SHEET 7
SHEET 8



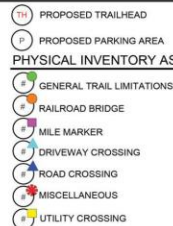
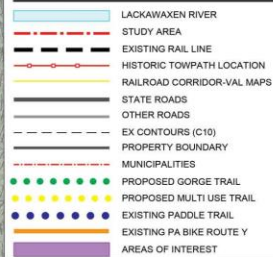
VIEW LOOKING NORTH
TOWARD ROWLAND

VIEW LOOKING SOUTH WEST
(EXISTING ROAD CROSSING)

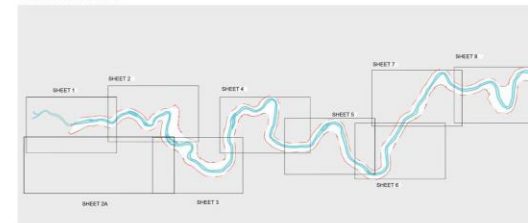


Trail Section	ID#	Location	Notes	ADA Accessible
Rowland Road (S.R. 1003) to Lackaween	13	41.48192, -75.01898	Exist pipe crossing, Trail pipe crossing may be needed.	Yes
Rowland Road (S.R. 1003) to Lackaween	14	41.48192, -75.01896	Exist pipe crossing, Trail pipe crossing may be needed.	Yes
Rowland Road (S.R. 1003) to Lackaween	15	41.48246, -75.01005	Steep slopes may limit trailway	Yes
Rowland Road (S.R. 1003) to Lackaween	16	41.48144, -75.01655	Exist pipe crossing, Trail pipe crossing may be needed.	Yes
Rowland Road (S.R. 1003) to Lackaween	17	41.48258, -75.00775	Mile marker 11C 112	N/A
Rowland Road (S.R. 1003) to Lackaween	18	41.48255, -75.00983	Exist pipe crossing, Trail pipe crossing may be needed.	Yes
Rowland Road (S.R. 1003) to Lackaween	19	41.48139, -75.00607	Cemetery found along proposed trail route.	N/A
Rowland Road (S.R. 1003) to Lackaween	20	41.48110, -75.00584	Driveway Crossing	Yes
Rowland Road (S.R. 1003) to Lackaween	21	41.48101, -74.99573	Driveway Crossing	Yes
Rowland Road (S.R. 1003) to Lackaween	22	41.48249, -75.00747	Exist pipe crossing, Trail pipe crossing may be needed.	Yes
Rowland Road (S.R. 1003) to Lackaween	23	41.47554, -74.99958	Exist pipe crossing, Trail pipe crossing may be needed.	Yes
Rowland Road (S.R. 1003) to Lackaween	24	41.47679, -74.99770	Exist pipe crossing, Trail pipe crossing may be needed.	Yes
Rowland Road (S.R. 1003) to Lackaween	25	41.47698, -74.99756	Exist pipe crossing, Trail pipe crossing may be needed.	Yes
Rowland Road (S.R. 1003) to Lackaween	26	41.47745, -74.99732	Existing road crossing	Yes
Rowland Road (S.R. 1003) to Lackaween	27	41.47761, -74.99717	Exist pipe crossing, Trail pipe crossing may be needed.	Yes
Rowland Road (S.R. 1003) to Lackaween	28	41.47832, -74.99663	Exist pipe crossing, Trail pipe crossing may be needed.	Yes
Rowland Road (S.R. 1003) to Lackaween	29	41.47905, -74.99673	Mile marker 11C 111	N/A
Rowland Road (S.R. 1003) to Lackaween	30	41.48052, -74.99651	Exist pipe crossing, Trail pipe crossing may be needed.	Yes
Rowland Road (S.R. 1003) to Lackaween	31	41.48081, -74.99643	Steep slopes may limit trailway	Yes
Rowland Road (S.R. 1003) to Lackaween	32	41.48158, -74.99625	Exist pipe crossing, Trail pipe crossing may be needed.	Yes
Rowland Road (S.R. 1003) to Lackaween	33	41.48475, -74.99305	Exist pipe crossing, Trail pipe crossing may be needed.	Yes
Rowland Road (S.R. 1003) to Lackaween	34	41.48474, -74.99260	Existing designated railroad platform	N/A
Rowland Road (S.R. 1003) to Lackaween	35	41.48466, -74.99200	Existing designated railroad platform	N/A
Rowland Road (S.R. 1003) to Lackaween	36	41.48458, -74.99163	Existing designated railroad platform	N/A

LEGEND:



LOCATION MAP



PAGE 8 OF 8

SITE PLAN 8: PROPOSED TRAIL ROUTE

SCALE: 1"=300'

NORTH 0° 150' 300' 600'

PIKE COUNTY TRAIL STUDY
PIKE COUNTY, PA
BCR-TAG-25-167

WOODLAND DESIGN ASSOCIATES INC.