



*Upstream from ordinary.*

**BOARD OF ALDERMEN MEETING**

RIVERSIDE CITY HALL

2950 NW VIVION ROAD

RIVERSIDE, MISSOURI 64150

**TENTATIVE AGENDA**

**JUNE 16, 2015**

**Regular Meeting - 7:00 p.m.**

Call to Order

Roll Call

Pledge of Allegiance

**Public Comments** - Members of the public may address exclusively the Mayor and members of the Board of Aldermen during Public Comments ONLY. This Public Comments time is reserved for citizen comments regarding agenda and non-agenda items. However, any item not listed on the agenda will be taken under advisement. Public comment on any agenda item which has a Public Hearing should be reserved until the Public Hearing is opened and comments on such item will be taken at that time. Each speaker is limited to 5 minutes.

**LEGISLATIVE SESSION**

**1. CONSENT AGENDA**

All matters listed under the Consent Agenda are considered to be routine by the Board of Aldermen and will be enacted by one motion to approve the Consent Agenda as presented. There is no separate discussion of these items. The Mayor or a member of the Board of Aldermen may request that any item be removed from the Consent Agenda for discussion or explanation. If removed, it will be considered separately following approval of the remaining items on the Consent Agenda. No motion is required to remove an item from the Consent Agenda.

Approval of minutes for June 2, 2015.

Approval of May 2015 Court Report.

**R-2015-029: A RESOLUTION AUTHORIZING THE EXPENDITURE OF FUNDS OUT OF THE CITY TREASURY OF THE CITY OF RIVERSIDE FOR FISCAL YEAR 2014-2015 WEEK ENDING JUNE 5<sup>TH</sup> AND JUNE 12<sup>TH</sup> IN THE AMOUNT OF \$297,492.36.** Point of Contact: Finance Director Donna Oliver.

**R-2015-030: A RESOLUTION APPOINTING NATHAN CRETSINGER TO THE PLANNING & ZONING COMMISSION.** Point of Contact: Mayor Kathy Rose.

**R-2015-031: A RESOLUTION AUTHORIZING THE PURCHASE OF WORKERS COMPENSATION INSURANCE FROM MIDWEST PUBLIC RISK FOR THE ANNUAL PREMIUM RENEWAL IN AN AMOUNT NOT TO EXCEED \$159,054.00.** Point of Contact: Finance Director Donna Oliver.

**REGULAR AGENDA**

- 1. Public Hearing:** Public hearing to consider a request for a Special Use Permit for outdoor storage at 2709 NW Platte Road, in the City of Riverside, Platte County, Missouri. (Opened on 05-19-15 and continued.)

a) First Reading: Bill No. 2015-040: **AN ORDINANCE GRANTING A SPECIAL USE PERMIT SUBJECT TO CERTAIN CONDITIONS TO STERLING CONSTRUCTION FOR OUTDOOR STORAGE IN THE COMMERCIAL (C-1) DISTRICT ON PROPERTY LOCATED AT 2709 NW PLATTE ROAD.**

Point of Contact: Community Development Director Mike Duffy.

2. First Reading: Bill No. 2015-050: **AN ORDINANCE AUTHORIZING THE EMPLOYMENT OF JENNIFER ENNA AS A FULL-TIME ADMINISTRATIVE ASSISTANT IN THE DEPARTMENT OF FINANCE AND ESTABLISHING A SALARY AND START DATE FOR SUCH EMPLOYEE.** Point of Contact: City Administrator Greg Mills.

3. **Communication from City Administrator**

a) **Department Reports**

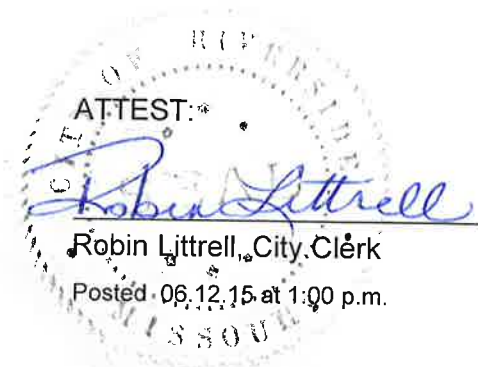
- i. Community Development
- ii. Engineering
- iii. Finance
- iv. Public Safety
- v. Public Works
- vi. Levee Board Report

4. **Communication from Mayor**

5. **Communication from Board of Aldermen**

6. **Motion to Adjourn**

  
\_\_\_\_\_  
Gregory P. Mills, City Administrator



MINUTES  
REGULAR MEETING  
BOARD OF ALDERMEN  
RIVERSIDE, MISSOURI  
Tuesday, June 2, 2015  
6:45 p.m.

The Board of Aldermen for the City of Riverside, Missouri, met in regular session in the Board of Aldermen Chambers at City Hall, 2950 NW Vivion Road, Riverside, Missouri, on Tuesday, June 2, 2015.

Mayor Rose called the regular meeting to order at 6:45 p.m. Those in attendance were Mayor Kathy Rose, Aldermen Ron Super, Art Homer, Frank Biondo, Aaron Thatcher, Chet Pruett, and Al Bowman.

Also present were City Administrator Greg Mills, and City Clerk Robin Littrell, Community Development Director Mike Duffy, Public Works Director Tom Wooddell, City Engineer Travis Hoover, Fire Chief Gordon Fowlston, and Major Chris Skinroad. Also attending were City Attorney Paul Campo and Special Counsel Joe Bednar.

**MOTION TO ENTER INTO  
CLOSED @ 6:46 P.M.**

Alderman Homer moved that the meeting go into closed session pursuant to RSMo 610.021 (1) Legal Action and litigation, RSMo 610.021 (2) Leasing, Purchase or sale of real estate, RSMo 610.021 (3) Hiring, firing, disciplining or promoting a particular employee, when personal information about the employee is discussed and RSMo 610.021(12) Sealed bids and related documents, until the bids are opened; and sealed proposals and related documents or any documents related to a negotiated contract until a contract is executed, or all proposals are rejected, second by Alderman Biondo.

Yes: Homer, Biondo, Bowman, Super, Pruett, and Thatcher.  
Motion carried 6-0.

**MOTION TO ADJOURN  
CLOSED @ 6:50 P.M.**

Alderman Homer moved at 6:50 p.m. to adjourn closed session with action taken, second by Alderman Biondo.

Yes: Homer, Biondo, Bowman, Pruett, Super, and Thatcher.  
Motion carried 6-0.

**REGULAR SESSION**

Mayor Rose called the Regular Session Meeting to order at 7:00 p.m.

Those in attendance were Mayor Kathy Rose, Aldermen Art Homer, Frank Biondo, Al Bowman, Chet Pruett, Ron Super, and Aaron Thatcher.

Also present were City Administrator Greg Mills, City Clerk Robin Littrell, Community Development Assistant Sarah Wagner, Public Works Director Tom Wooddell, Community Development Director Mike Duffy, City Planner Jackie Carlson, City Engineer Travis Hoover, Finance Director Donna Oliver, Fire Chief Gordon Fowlston, and Major Chris Skinroad. Also present were City Attorney Paul Campo and Special Counsel Joe Bednar.

<b>PLEDGE OF ALLEGIANCE</b>	Mayor Rose led the Pledge of Allegiance.
<b>PUBLIC COMMENT</b>	None.
<b>CONSENT AGENDA</b>	Alderman Biondo moved to approve the consent agenda as presented, second by Alderman Homer. Yes: Biondo, Homer, Bowman, Thatcher, Pruett, and Super. Motion carried 6-0.
<b>MINUTES OF 05-19-15</b>	Alderman Biondo moved to approve the minutes of the May 19, 2015 meeting, second by Alderman Homer. Yes: Biondo, Homer, Bowman, Thatcher, Pruett, and Super. Motion carried 6-0.
<b>MINUTES OF 05-21-15</b>	Alderman Biondo moved to approve the minutes of the May 21, 2015 meeting, second by Alderman Homer. Yes: Biondo, Homer, Bowman, Thatcher, Pruett, and Super. Motion carried 6-0.
<b>RESOLUTION 2015-025</b> Bill Pay	Alderman Biondo moved to approve Resolution 2015-025 authorizing the expenditure of funds for fiscal year 2014-2015, for weeks ending May 22 <sup>nd</sup> and May 29 <sup>th</sup> the amount of \$164,402.68, second by Alderman Homer. Yes: Biondo, Homer, Bowman, Thatcher, Pruett, and Super. Motion carried 6-0.
<b>RESOLUTION 2015-026</b> Currency Tracking System	Alderman Biondo moved to approve Resolution 2015-026 authorizing the purchase of a currency tracking system, second by Alderman Homer. Yes: Biondo, Homer, Bowman, Thatcher, Pruett, and Super. Motion carried 6-0.
<b>REGULAR AGENDA</b>	
<b>PUBLIC HEARING</b> SUP – 2709 NW Platte Road	Mayor Rose acknowledged the public hearing remained open from the May 19 <sup>th</sup> meeting to consider a request for a Special Use Permit for outdoor storage located at 2709 NW Platte Road, in the City of Riverside, Platte County, Missouri. Steve VanSickle with Sterling Construction came before the Board regarding his outdoor storage request. Mayor Rose asked questions of Mr. VanSickle and he gave responses. Following discussion, direction was given to continue the public hearing to the next regular meeting, Mr. VanSickle get in writing from staff the issues that need discussed with the landowner, and that all parties discuss said issues and have answers for the Board at the next regular meeting where this public hearing will continue and responses will be shared prior to voting on this Special Use Permit. Mayor Rose asked for any further comments and hearing none, requested a motion to continue the Public Hearing at the next meeting.

Alderman Thatcher moved to continue the Public Hearing for the SUP located at 2790 NW Platte Road, Riverside, Missouri to the next regular meeting, second by Alderman Super.

Yes: Thatcher, Super, Pruett, Homer, Bowman, and Biondo.

Motion carried 6-0.

**BILL NO. 2015-043**

BABRA Specs

City Clerk Robin Littrell gave first reading of Bill No. 2015-043.

City Engineer Travis Hoover reviewed this bill with the Board, explaining that this project is using CDBG funds and will go out for bid next week.

Alderman Thatcher moved to accept first reading and place Bill No. 2015-043 on second and final reading, second by Alderman Pruett.

Yes: Thatcher, Pruett, Biondo, Bowman, Homer, Super.

Motion carried 6-0.

Alderman Homer moved to approve Bill 2015-043 and enact said bill as ordinance, second by Alderman Thatcher.

Yes: Homer, Thatcher, Super, Biondo, Pruett, and Bowman.

Motion carried 6-0.

**BILL NO. 2015-044**

Houston Lake Service Agmnt

City Clerk Robin Littrell gave first reading of Bill No. 2015-044.

Fire Chief Gordon Fowlston reviewed this bill to approve an agreement with the City of Houston Lake for fire, rescue, and medical first response services. Two year agreement, no price changes.

Alderman Thatcher moved to accept first reading and place Bill No. 2015-044 on second and final reading, second by Alderman Biondo.

Yes: Thatcher, Biondo, Pruett, Bowman, Homer, and Super.

Motion carried 6-0.

Alderman Bowman moved to approve Bill 2015-044 and enact said bill as ordinance, second by Alderman Thatcher.

Yes: Bowman, Thatcher, Super, Homer, Pruett, and Biondo.

Motion carried 6-0.

**BILL NO. 2015-045**

Northmoor Service Agmnt

City Clerk Robin Littrell gave first reading of Bill No. 2015-045.

Fire Chief Gordon Fowlston reviewed this bill to approve an agreement with the City of Northmoor for fire, rescue, and medical first response services. Two year agreement, no price changes.

Alderman Biondo moved to accept first reading and place Bill No. 2015-045 on second and final reading, second by Alderman Thatcher.

Yes: Biondo, Thatcher, Homer, Bowman, Super, and Pruett.

Motion carried 6-0.

Alderman Thatcher moved to approve Bill 2015-045 and enact said bill as ordinance, second by Alderman Biondo.

Yes: Thatcher, Biondo, Homer, Super, Bowman, and Pruett.

Motion carried 6-0.

**BILL NO. 2015-046**  
Amend Fire Pay-Seals

City Clerk Robin Littrell gave first reading of Bill No. 2015-046. City Administrator Mills explained this amendment is simply correcting the original ordinance with no actual salary change. Alderman Thatcher moved to accept first reading and place Bill No. 2015-046 on second and final reading, second by Alderman Super.  
Yes: Thatcher, Super, Pruett, Homer, Bowman, and Biondo.  
Motion carried 6-0.  
Alderman Homer moved to approve Bill 2015-046 and enact said bill as ordinance, second by Alderman Pruett.  
Yes: Homer, Pruett, Bowman, Biondo, Thatcher, and Super.  
Motion carried 6-0.

**BILL NO. 2015-047**  
Amend Fire Pay-Johnston

City Clerk Robin Littrell gave first reading of Bill No. 2015-047. City Administrator Mills explained this amendment is simply correcting the original ordinance with no actual salary change. Alderman Thatcher moved to accept first reading and place Bill No. 2015-047 on second and final reading, second by Alderman Biondo.  
Yes: Thatcher, Biondo, Bowman, Homer, Pruett, and Super.  
Motion carried 6-0.  
Alderman Biondo moved to approve Bill 2015-047 and enact said bill as ordinance, second by Alderman Thatcher.  
Yes: Biondo, Thatcher, Super, Bowman, Pruett, and Homer.  
Motion carried 6-0.

**BILL NO. 2015-048**  
MoDot Work Zone Agreement

City Clerk Robin Littrell gave first reading of Bill No. 2015-048. Major Chris Skinrood reviewed this bill to the Board. Alderman Thatcher moved to accept first reading and place Bill No. 2015-048 on second and final reading, second by Alderman Biondo.  
Yes: Thatcher, Biondo, Homer, Bowman, Super, and Pruett.  
Motion carried 6-0.  
Alderman Bowman moved to approve Bill 2015-048 and enact said bill as ordinance, second by Alderman Pruett.  
Yes: Bowman, Pruett, Thatcher, Super, Homer, and Biondo.  
Motion carried 6-0.

**BILL NO. 2015-049**  
Lease Agreement BABRA

City Clerk Robin Littrell gave first reading of Bill No. 2015-049. Special Counsel Joe Bednar explained the purpose of the bill for BABRA, Golden Lake, and the City. Alderman Thatcher moved to accept first reading and place Bill No. 2015-049 on second and final reading, second by Alderman Biondo.  
Yes: Thatcher, Biondo, Homer, Pruett, Super, and Bowman.  
Motion carried 6-0.  
Alderman Pruett moved to approve Bill 2015-049 and enact said bill as ordinance, second by Alderman Bowman.  
Yes: Pruett, Bowman, Biondo, Thatcher, Super, and Homer.  
Motion carried 6-0.

<b>RESOLUTION 2015-027</b> 2015-2016 Annual Budget	<p>Finance Director Donna Oliver reviewed the budget numbers with the Board.</p> <p>Alderman Thatcher moved to approve Resolution 2015-027 adopting the fiscal year 2015-2016 annual budget for the City, second by Alderman Biondo.</p> <p>Yes: Thatcher, Biondo, Pruett, Bowman, Homer, and Super.</p> <p>Motion carried 6-0.</p>
<b>RESOLUTION 2015-028</b> CO 4 Tenoch Construction	<p>City Engineer Travis Hoover explained details of this change order and showed a few pictures of areas to be repaired by this change order.</p> <p>Alderman Thatcher moved to approve Resolution 2015-028 Authorizing, approving and ratifying change order 4 to the agreement with Tenoch Construction Inc., second by Alderman Biondo.</p> <p>Yes: Thatcher, Biondo, Homer, Super, Pruett, and Bowman.</p> <p>Motion carried 6-0.</p>
<b>LIQUOR LICENSE APPROVAL</b> Scottish Highland Games 2015	<p>Alderman Thatcher moved to approve the temporary picnic liquor license contingent upon State of Missouri approval for the Scottish Highland Games on June 12-14, 2015, second by Alderman Biondo.</p> <p>Yes: Thatcher, Biondo, Bowman, Pruett, Super, and Homer.</p> <p>Motion carried 6-0.</p>
<b>CITY ADMINISTRATOR</b>	<p>City Administrator Greg Mills inquired about those attending the 2015 National League of Cities, November 4-7. Please let me know by Friday if you are interested in attending.</p>
<b>COMMUNITY DEVELOPMENT</b>	<p>Community Development Director Mike Duffy reviewed a PowerPoint presentation of the Horizons CID. Details were reviewed. We are preparing to move forward on this if you are in favor of the information presented. Our next step will be to approach property owners with the petition process.</p> <p>Two potential dangerous structures were discussed and the steps staff is taking to notify owners and options available.</p>
<b>ENGINEERING</b>	Nothing to report.
<b>FINANCE</b>	Nothing to report.
<b>PUBLIC SAFETY</b>	Nothing to report.
<b>PUBLIC WORKS</b>	Nothing to report.
<b>LEVEE BOARD</b>	<p>Community Development Director Mike Duffy and Alderman Super gave an update on conversations and meeting with the Corp of Engineers, Levee District and the BNSF Railroad regarding the Q1 crossing. Contacts will be made when we travel to Washington D.C. It was not constructed as designed.</p>

**MAYOR'S DISCUSSION**

Mayor Rose wanted to remind everyone of the Library round table meetings on Thursday, June 4<sup>th</sup>, 6 p.m. to 7:30 p.m. and next Saturday, June 13<sup>th</sup> from 9 a.m. to 10:30 p.m. We will gather information and form a report to present to the entire Library Board.

**BOARD OF ALDERMEN**

Alderman Pruett – Nothing to report.

Alderman Homer – Nothing to report.

Alderman Super – Nothing to report.

Alderman Thatcher – Nothing to report.

Alderman Biondo – Nothing to report.

Alderman Bowman – Nothing to report.

**MOTION TO ADJOURN**

Alderman Biondo moved to adjourn the meeting at 8:00 p.m., second by Alderman Bowman.  
Yes: Biondo, Bowman, Pruett, Homer, Super, and Thatcher.  
Motions carried 6-0.

---

Robin Littrell, City Clerk



**CITY OF RIVERSIDE  
MUNICIPAL COURT  
2950 N.W. VIVION RD  
RIVERSIDE, MISSOURI 64150**

**REPORT TO CITY CLERK  
FOR MONTH OF MAY**

I do hereby certify that this is a complete listing of the cases heard in the Municipal Division for the month of MAY, 2015.



Shayla Jones  
Court Administrator

Filed: June 2, 2015  
RSMo. 479.080.3

(Trial de novas filed: None)



Report received by City Clerk

**MUNICIPAL DIVISION REPORTING FORM**

I. COURT INFORMATION			
Contact information same as last report			
Municipality: RIVERSIDE		Period: May, 2015	
Mailing Address: 2950 NW VIVION ROAD		Vendor: Tyler Technologies	
Physical Address: 2950 NW VIVION ROAD		County: PLATTE COUNTY Circuit: 6	
Telephone Number: (816) 741-1212		Fax Number: (816) 372-9020	
Prepared by: S JONES		E-mail: municipalcourt@riversidemo.com	
Municipal Judge(s): MARK M. FERGUSON		Prosecuting Attorney: AMY ASHELFORD	
Notes			
=====			
II. MONTHLY CASELOAD INFORMATION	A/D Traffic	Other	Non-Traffic
A. Cases pending - 1st Month	173	2,287	1,419
B. Cases filed	0	54	30
C. Cases Disposed			
1. Jury Trial	0	0	0
2. Court/Bench Trial -Guilty	0	0	0
3. Court/Bench Trial -Not Guilty	0	0	0
4. Plea of Guilty in Court	6	62	15
5. BF and Viol. Bureau Citations	0	2	1
6. Dismissed by Court	0	0	0
7. Nolle Prosequi	0	17	2
8. Certified for Jury Trial	0	0	0
9. TOTAL CASE DISPOSITIONS	6	81	18
D. Cases pending - End of Month	167	2,260	1,431
E. Trial de Novo - Appeal filed	0	0	0
=====			
III. WARRANT INFORMATION	IV. PARKING TICKETS		
1. Total Issued	4	Issued	0
2. Total served/withdrawn EOM	49	[X] No parking tickets	
3. Total Outstanding EOM	2,502		
=====			
V. NET REVENUE COLLECTED			
Fines	\$ 18,881.50	Restitution	\$ 0.00
Clerk/Court Fee (Costs)	\$ 1,452.00	Parking Ticket	\$ 0.00
Jud Ed Fund	\$ 0.00	Bond Forf	\$ 0.00
[ X] No JEF collection			
Peace Officer (POST)	\$ 121.00	Bond refunds	\$ 6,699.00
Crime Victims Comp (CVC)	\$ 907.50	Total Other Disbursements	
Law Enf Training (LET)	\$ 242.00		\$ 375.00
Domestic Viol Shelter	\$ 242.00		
Inmate Sec Fund	\$ 242.00	Tot Disbursements \$	29,522.00
Sheriffs' Retirement Fund	\$ 360.00		

Office of State Court Administrator, Statistics

2112 Industrial Drive, P.O. Box 104480, Jefferson City, MO 65110

OSCA Help Desk: 1-888-541-4894

Research Unit Fax: 573-526-0338

E-mail: swjis.reports@courts.mo.gov

Missouri Office of State Courts Administrator

MUNICIPAL DIVISION REPORTING FORM  
Supplemental

Section V. NET DISBURSEMENTS

Other Disbursements		\$ Amount
DUI		\$ 375.00
JAIL EXPENSE		\$ 0.00
BAD CHECK CHARGE		\$ 0.00
		\$ 0.00
Total for Other Disbursements		\$ 375.00

Office of State Court Administrator, Statistics

2112 Industrial Drive, P.O. Box 104480, Jefferson City, MO 65110

OSCA Help Desk: 1-888-541-4894

Research Unit Fax: 573-526-0338

E-mail: [swjis.reports@courts.mo.gov](mailto:swjis.reports@courts.mo.gov)

MONTHLY REPORT  
TO THE  
CITY OF RIVERSIDE, MISSOURI

June 2, 2015

I ATTEST THAT THE FOREGOING IS A TRUE AND  
FACTUAL ACCOUNTING OF COURT FOR THE MONTH OF  
**MAY**, 2015.

  
\_\_\_\_\_  
SHAYLA JONES, COURT ADMINISTRATOR

\*Printed: 06/02/2015

## MUNICIPAL COURT REPORT

RIVERSIDE MUNICIPAL COURT  
Report For May 1, 2015 Thru MayPage: 1  
31, 2015 MOSTRPT

## Citations by Filed Date...

Total Citations	130	
Total Warnings	0	
Total Voids	0	
Total Filed Citations		130

## Citations by Issued Date...

Total Citations	111	
Total Warnings	0	
Total Voids	0	
Total Issued Citations		111

## Violations by Filed Date...

Traffic	77	
NON-MOVING VIOLATION	12	
City Ordinance	41	
Total Filed Violations		130

## Violations by Issued Date...

Traffic	68	
NON-MOVING VIOLATION	11	
City Ordinance	32	
Total Issued Violations		111

## Continued Cases...

## Multiple Continuances

Traffic	42	
NON-MOVING VIOLATION	5	
City Ordinance	16	
Total		63

## Continued Trial

Traffic	0	
NON-MOVING VIOLATION	0	
City Ordinance	0	
Total		0

Total Continued Cases 63

## Paid Fine...

Traffic	2	
NON-MOVING VIOLATION	0	
City Ordinance	0	
Total Paid Fines		2

## Before Judge...

## MUNICIPAL COURT REPORT

RIVERSIDE MUNICIPAL COURT  
Report For May 1, 2015 Thru May

Page: 2  
31, 2015 MOSTRPT

Traffic	36	
NON-MOVING VIOLATION	64	
City Ordinance	16	
Total Before Judge		116
Total Completed		118

## Other Completed...

## Dismissed by Judge

Traffic	1	
NON-MOVING VIOLATION	0	
City Ordinance	1	
Total		2

## Dismissed by Prosecutor

Traffic	15	
NON-MOVING VIOLATION	3	
City Ordinance	8	
Total		26

## FOUND GUILTY - WAIVED FEES

Traffic	0	
NON-MOVING VIOLATION	0	
City Ordinance	1	
Total		1

Total Other Completed 29

Grand Total Completed 147

## Warrants...

## Issued...

Traffic	0	
NON-MOVING VIOLATION	0	
City Ordinance	4	
Total Warrants Issued		4

## Cleared...

Traffic	31	
NON-MOVING VIOLATION	13	
City Ordinance	5	
Total Warrants Cleared		49

Change in Total Warrants 45-

FINE FINE	\$18,881.50
CC COURT COST	\$1,452.00
CVS2 CRIME VICTIMS STATE2	\$862.73

**MUNICIPAL COURT REPORT**

**RIVERSIDE MUNICIPAL COURT**  
**Report For May 1, 2015 Thru May**

**Page: 3**  
**31, 2015 MOSTRPT**

---

<b>CVC2 CRIME VICTIMS CITY2</b>	<b>\$44.77</b>
<b>DV DOMESTIC VIOLENCE</b>	<b>\$242.00</b>
<b>STPT STATE POLICE TRAINING FUND</b>	<b>\$121.00</b>
<b>TC TRAINING COST</b>	<b>\$242.00</b>
<b>ISF INMATE SECURITY FUND</b>	<b>\$242.00</b>
<b>SF SHERIFFS' SURCHARGE</b>	<b>\$360.00</b>
<b>DUI DUI</b>	<b>\$375.00</b>
<b>Total Fees/Fines Paid</b>	<b>\$22,823.00</b>

---

**RESOLUTION NO. R - 2015-029**

**A RESOLUTION AUTHORIZING THE EXPENDITURE OF FUNDS OUT OF THE CITY TREASURY OF THE CITY OF RIVERSIDE FOR FISCAL YEAR 2014-2015 WEEK ENDING JUNE 5<sup>TH</sup> AND JUNE 12<sup>TH</sup> IN THE AMOUNT OF \$297,492.36.**

**WHEREAS**, the Board of Aldermen find it is in the best interest of the citizens of the City of Riverside to authorize and approve the expenditure of funds as set forth in Exhibit "A" attached hereto;

**NOW THEREFORE, BE IT RESOLVED BY THE BOARD OF ALDERMEN OF THE CITY OF RIVERSIDE, MISSOURI, AS FOLLOWS:**

**THAT** the disbursements and expenditure of funds from the city treasury in the amount of \$297,492.36 as set forth in Exhibit "A" attached hereto and made a part hereof by reference are hereby authorized and approved.

**FURTHER THAT** the City Administrator is hereby authorized to execute all agreements or documents necessary to approve the purchase of goods and services contemplated therein and the Finance Director is authorized to issue a check therefor to the respective companies, firms, persons in the amounts set forth therein.

**PASSED AND ADOPTED** by the Board of Aldermen and **APPROVED** by the Mayor of the City of Riverside, Missouri, the 16<sup>th</sup> day of June, 2015.

---

Mayor Kathleen L. Rose

ATTEST:

---

Robin Littrell, City Clerk





City of Riverside, MO

# Expense Approval Report

## By Fund

Payment Dates 06/03/2015 - 06/03/2015

Vendor Name	Payable Number	Post Date	Description (Item)	Account Number	Amount
<b>Fund: 10 - GENERAL FUND</b>					
SUGAR CREEK, CITY OF	612	06/03/2015	REGISTRATION/30 OFFICERS	10-221-000-53047	600.00
AT&T	816A5000371267 05/15	06/03/2015	2950 NW VIVION RD	10-112-000-27000	5,348.31
KCMO WATER SERVICES DEPA	61440003546387 05/15	06/03/2015	1001 ARGOSY PKWY	10-336-107-25400	122.03
KCMO WATER SERVICES DEPA	61445903546971 05/15	06/03/2015	2901 NW VIVION RD	10-336-108-25400	28.10
KCMO WATER SERVICES DEPA	61467003549087 05/15	06/03/2015	4200 RIVERSIDE ST	10-337-101-25400	72.69
KCMO WATER SERVICES DEPA	61467103549090 05/15	06/03/2015	4498 HIGH DR	10-337-104-25400	82.20
KCMO WATER SERVICES DEPA	61468303549219 05/15	06/03/2015	2990 NW VIVION RD	10-337-103-25400	205.60
LINCOLN NATIONAL LIFE INS.	3030826458	06/03/2015	LIFE - ADMINISTRATION	10-112-000-19200	40.80
LINCOLN NATIONAL LIFE INS.	3030826458	06/03/2015	LIFE - MUNICIPAL COURT	10-216-000-19200	6.80
LINCOLN NATIONAL LIFE INS.	3030826458	06/03/2015	LIFE - PUBLIC SAFETY	10-221-000-19200	370.86
LINCOLN NATIONAL LIFE INS.	3030826458	06/03/2015	LIFE - COMMUNICATIONS	10-223-000-19200	115.85
LINCOLN NATIONAL LIFE INS.	3030826458	06/03/2015	LIFE - PS ADMINISTRATION	10-224-000-19200	41.36
LINCOLN NATIONAL LIFE INS.	3030826458	06/03/2015	LIFE - FIRE DEPARTMENT	10-226-000-19200	362.16
LINCOLN NATIONAL LIFE INS.	3030826458	06/03/2015	LIFE - PUBLIC WORKS	10-331-000-19200	54.40
LINCOLN NATIONAL LIFE INS.	3030826458	06/03/2015	LIFE - ENGINEERING	10-332-000-19200	26.06
LINCOLN NATIONAL LIFE INS.	3030826458	06/03/2015	LIFE - COMMUNITY CENTER	10-341-000-19200	13.60
LINCOLN NATIONAL LIFE INS.	3030826458	06/03/2015	LIFE - COMMUNITY DEVELOP	10-819-000-19200	52.90
KCPL SERVICE PMTS	0512-89-5780 05/15	06/03/2015	2626 NW PLATTE RD	10-336-112-25000	677.48
KCPL SERVICE PMTS	0913-11-1638 05/15	06/03/2015	4100 NW RIVERSIDE DR	10-337-106-25000	38.93
KCPL SERVICE PMTS	1232-04-9424 05/15	06/03/2015	2901 NW VIVION RD DPO1	10-336-108-25000	109.63
KCPL - STREET LTG	1921-09-8495 05/15	06/03/2015	4702 NW HIGH DR	10-331-000-26800	27.32
KCPL SERVICE PMTS	2093-49-0946 05/15	06/03/2015	3880 ARGOSY CASINO PARKW	10-336-113-25000	16.45
KCPL SERVICE PMTS	2130-19-8248 05/15	06/03/2015	4026 ARGOSY CASINO PARKW	10-336-113-25000	16.45
KCPL SERVICE PMTS	2359-60-9788 05/15	06/03/2015	4100 NW RIVERSIDE DR	10-337-106-25000	16.45
KCPL SERVICE PMTS	2953-72-9970 05/15	06/03/2015	4102 NW RIVERSIDE DR	10-337-106-25000	16.45
KCPL SERVICE PMTS	3086-70-0722 05/15	06/03/2015	2950 NW VIVION RD	10-337-102-25000	2,211.95
KCPL - STREET LTG	3147-73-7222 05/15	06/03/2015	2509 W PLATTE TS	10-331-000-26800	42.69
KCPL SERVICE PMTS	3578-68-5006 05/15	06/03/2015	4100 NW RIVERSIDE DR	10-337-106-25000	16.45
KCPL - STREET LTG	3948-82-2408 05/15	06/03/2015	4509 GATEWAY TS	10-331-000-26800	38.51
KCPL SERVICE PMTS	4649-50-9862 05/15	06/03/2015	4100 NW RIVERSIDE DR	10-337-106-25000	302.57
KCPL SERVICE PMTS	4884-79-8490 05/15	06/03/2015	4200 NW RIVERSIDE DR A	10-337-101-25000	18.29
KCPL SERVICE PMTS	5319-48-0868 05/15	06/03/2015	4100 NW RIVERSIDE DR	10-337-106-25000	68.62
KCPL SERVICE PMTS	7556-98-7111 05/15	06/03/2015	1001 NW ARGOSY PKWY	10-336-107-25000	687.40
KCPL SERVICE PMTS	7922-40-5202 05/15	06/03/2015	2990 NW VIVION RD	10-337-103-25000	1,854.29
KCPL SERVICE PMTS	8507-74-3245 05/15	06/03/2015	4200 NW RIVERSIDE DR	10-337-101-25000	549.98
KCPL SERVICE PMTS	8555-87-0016 05/15	06/03/2015	4498 NW HIGH DR	10-337-104-25000	1,438.67
KCPL SERVICE PMTS	8712-27-4759 05/15	06/03/2015	4101 VAN DE POPLIER SIREN	10-337-103-25000	26.35
KCPL SERVICE PMTS	8768-51-3516 05/15	06/03/2015	2805 NW VIVION RD	10-336-111-25000	452.09
KCPL SERVICE PMTS	9499-79-6859 05/15	06/03/2015	4500 NW HIGH DR	10-337-105-25000	200.09
KCPL SERVICE PMTS	9775-39-9838 05/15	06/03/2015	4700 NW HIGH DRIVE	10-337-103-25000	26.96
SAM'S CLUB DIRECT	009669	06/03/2015	SUPPLIES	10-221-000-52500	35.45
KCPL SERVICE PMTS	8138-89-2268 05/15	06/03/2015	4103 NW TREMONT RD	10-337-117-25000	439.12
RIVERSIDE, CITY OF	05/28/15	06/03/2015	REIMB MAYOR/PARKING AT	10-102-000-36000	5.00
RIVERSIDE, CITY OF	05/28/15	06/03/2015	REIMB FOR MEAT/LUNCHEON	10-112-000-36100	31.68
RIVERSIDE, CITY OF	05/28/15	06/03/2015	REIMB FOR POTLUCK	10-112-000-36100	10.00
RIVERSIDE, CITY OF	05/28/15	06/03/2015	METROPOLITAN CHIEFS LUN	10-112-000-36100	16.00
RIVERSIDE, CITY OF	05/28/15	06/03/2015	REIMB FOR SOAP	10-112-000-50500	3.00
DONNA OLIVER	05/28/15	06/03/2015	REIMB CITY'S SHARE/GYM ME	10-115-000-21301	48.63
RIVERSIDE, CITY OF	05/28/15	06/03/2015	REIMB H PHILLIPS/MACA CON	10-216-000-36000	18.94
RIVERSIDE, CITY OF	05/28/15	06/03/2015	REIMB S JONES/MACA CONF	10-216-000-36000	21.98
RIVERSIDE, CITY OF	05/28/15	06/03/2015	RECORDER OF DEEDS/BRIARC	10-819-000-32700	102.00
AREA CREDIT UNION	05/29/15	06/03/2015	REIMB SECURITY DEPOSIT	10-20010	100.00
ICMA-RC VANTAGEPOINT	40980438	06/03/2015	EMPLOYEE W/H 05/29 PAYRO	10-20006	1,227.40

## Expense Approval Report

Payment Dates: 06/03/2015 - 06/03/2015

Vendor Name	Payable Number	Post Date	Description (Item)	Account Number	Amount
ICMA-RC VantagePoint	40980447	06/03/2015	EMPLOYEE W/H 05/29 PAYRO	10-20006	125.00
PACIFIC TELEMAGEMENT S	750736	06/03/2015	EH YOUNG	10-336-107-27000	78.00
PACIFIC TELEMAGEMENT S	750736	06/03/2015	POOL	10-336-110-27000	75.00
PACIFIC TELEMAGEMENT S	750736	06/03/2015	COMMUNITY CENTER	10-341-000-27000	75.00
JONES, LINDA	05/30/15	06/03/2015	REIMB SECURITY DEPOSIT	10-20010	100.00
WILSON, JENIFER	05/30/15	06/03/2015	REIMB SECURITY DEPOSIT	10-20010	50.00
JONES, LINDA	05/31/15	06/03/2015	REIMB SECURITY DEPOSIT	10-20010	100.00
WRIGHT EXPRESS FSC	41018282	06/03/2015	FUEL PURCHASE - MAY	10-224-000-54100	4,566.87
MACA	06/01/15	06/03/2015	CERTIFICATION/ADVANCED C	10-216-000-36400	65.00
BAKER, EARL	06/02/15	06/03/2015	BAND/SENIOR DANCE	10-341-100-44522	200.00
Fund 10 - GENERAL FUND Total:					<b>23,891.86</b>
Fund: 14 - NEIGHBORHOOD SERVICES					
RIVERSIDE, CITY OF	05/28/15	06/03/2015	OVER/SHORT	14-000-40420	-10.00
Fund 14 - NEIGHBORHOOD SERVICES Total:					<b>-10.00</b>
Fund: 21 - CAPITAL IMPROVEMENTS FUND					
RIVERSIDE, CITY OF	05/28/15	06/03/2015	RECORDER OF DEEDS/HORIZO	21-020-000-51007	30.00
Fund 21 - CAPITAL IMPROVEMENTS FUND Total:					<b>30.00</b>
Grand Total:					<b>23,911.86</b>



City of Riverside, MO

# Expense Approval Report

## By Fund

Payment Dates 06/10/2015 - 06/10/2015

Vendor Name	Payable Number	Post Date	Description (Item)	Account Number	Amount
<b>Fund: 10 - GENERAL FUND</b>					
CELLCO PARTNERSHIP	9746209508	06/10/2015	DATA CARDS	10-224-000-27200	944.49
MISSOURI DEPT OF REVENUE	05/01-31/15	06/10/2015	CRIME VICTIM COMPENSATIO	10-20502	862.73
BUDGET DIRECTOR	05/01-31/15	06/10/2015	PEACE OFFICERS STANDARDS	10-20503	121.00
SYNERGY SERVICES, INC	05/01-31/15	06/10/2015	DOMESTIC VIOLENCE SHELTE	10-20504	242.00
BUDGET DIRECTOR SHERIFFS	05/01-31/15	06/10/2015	SHERIFFS' RETIREMENT FUND	10-20508	360.00
WINDSTREAM COMMUNICAT	14502461	06/10/2015	2950 NW VIVION RD	10-112-000-27000	382.89
MISSOURI GAS ENERGY	0270750966 06/15.	06/10/2015	4200 NW RIVERSIDE DR	10-337-101-25200	39.46
MISSOURI GAS ENERGY	0453776540 06/15	06/10/2015	4500 NW HIGH DR A	10-337-104-25200	115.39
YMCA OF GREATER KANSAS C	06/01/15A	06/10/2015	REIMB CITY'S SHARE/MEMBE	10-115-000-21301	911.25
YMCA OF GREATER KANSAS C	06/01/15A	06/10/2015	REIMB CITY'S SHARE/MEMBE	10-341-000-22800	16,625.25
YMCA OF GREATER KANSAS C	06/01/15B	06/10/2015	RIVERSIDE SUPPORT FEE	10-341-000-22800	3,500.00
MISSOURI GAS ENERGY	5503585952 06/15	06/10/2015	2990 NW VIVION RD	10-337-103-25200	77.12
MISSOURI AMERICAN WATER	1017210010166209 0615	06/10/2015	2990 NW VIVION RD FIRE	10-337-103-25400	150.43
MISSOURI AMERICAN WATER	1017210015746204 0615	06/10/2015	2950 NW VIVION RD FIRE	10-337-103-25400	338.11
KCPL - STREET LTG	0107-16-0767 06/15	06/10/2015	STREETLIGHTS	10-331-000-26800	18,677.37
MISSOURI AMERICAN WATER	1017210010504726 0615	06/10/2015	RIVERWAY/PLATTE RD FOUTN	10-336-112-25400	23.82
MISSOURI AMERICAN WATER	1017210014458047 0615	06/10/2015	2950 NW VIVION RD DETEC	10-337-102-25400	111.42
MISSOURI AMERICAN WATER	1017210015746389 0615	06/10/2015	4200 RIVERSIDE ST	10-337-101-25400	131.01
MISSOURI AMERICAN WATER	1017210015746471 0615	06/10/2015	4498 HIGH DR DETCK	10-337-104-25400	925.18
MISSOURI AMERICAN WATER	1017210015748552 0615	06/10/2015	4820 HOMESTEAD TER PARKF	10-336-109-25400	16.47
MISSOURI AMERICAN WATER	1017210015884915 0615	06/10/2015	1001 NW ARGOSY PARK	10-336-107-25400	226.50
SAM'S CLUB DIRECT	004875	06/10/2015	SUPPLIES/TOWN HALL MEETI	10-112-000-22910	70.98
SAM'S CLUB DIRECT	004875	06/10/2015	SUPPLIES/BOA CONF ROOM	10-112-000-53900	220.16
SAM'S CLUB DIRECT	005051	06/10/2015	SUPPLIES	10-341-100-44522	281.51
BETTY NAYLOR	06/04/15	06/10/2015	REIMB HEALTH INS - JUNE	10-112-000-19000	297.31
MISSOURI AMERICAN WATER	1017210010165930 0615	06/04/2015	2990 NW VIVION RD DETCK	10-337-103-25400	276.28
MISSOURI AMERICAN WATER	1017210010445575 0615	06/10/2015	2805 NW VIVION RD	10-336-111-25400	82.03
MISSOURI AMERICAN WATER	1017210010690719 0615	06/10/2015	777 A ARGOSY PKWY IRRIG	10-336-113-25400	77.95
MISSOURI AMERICAN WATER	1017210012068028 0615	06/10/2015	W PLATTE/VALLEY	10-336-112-25400	77.95
MISSOURI AMERICAN WATER	1017210012698627 0615	06/10/2015	4301 B TULLISON RD IRRIG	10-336-113-25400	77.95
MISSOURI AMERICAN WATER	1017210015953323 0615	06/10/2015	2901 NW VIVION RD PARK	10-336-108-25400	25.45
SAM'S CLUB DIRECT	008035 06/15	06/10/2015	SUPPLIES	10-341-100-44522	108.17
LORI BOJI	06/05/15	06/10/2015	REIMB AUTO MILEAGE	10-341-000-36000	15.68
WRIGHT EXPRESS FSC	41185872	06/10/2015	FUEL - BEHLE	10-331-000-54100	10.43
WRIGHT EXPRESS FSC	41185872	06/10/2015	FUEL - WAGNER	10-331-000-54100	483.87
WRIGHT EXPRESS FSC	41185872	06/10/2015	FUEL - SHELTON	10-331-000-54100	480.64
WRIGHT EXPRESS FSC	41185872	06/10/2015	FUEL - MCGUIRE	10-331-000-54100	62.84
WRIGHT EXPRESS FSC	41185872	06/10/2015	FUEL - BUESCHER	10-331-000-54100	42.29
WRIGHT EXPRESS FSC	41185872	06/10/2015	FUEL - JEFFREY	10-331-000-54100	66.70
WRIGHT EXPRESS FSC	41185872	06/10/2015	FUEL - WOODDELL	10-331-000-54100	72.56
WRIGHT EXPRESS FSC	41185872	06/10/2015	FUEL - HOOVER	10-332-000-54100	69.31
WRIGHT EXPRESS FSC	41185872	06/10/2015	FUEL - FULLER	10-819-000-54000	85.46
RICHARDSON, BARTON	06/08/15	06/10/2015	REIMB RENTAL/PARK FLOOD	10-000-40104	150.00
RICHARDSON, BARTON	06/08/15	06/10/2015	REIMB SECURITY DEPOSIT/PA	10-20010	150.00
LUNDGREN, TIFFANY	06/08/15	06/10/2015	REIMB SECURITY DEPOSIT	10-20010	30.00
WOLF, CORY	06/08/15	06/10/2015	REIMB SECURITY DEPOSIT	10-20010	50.00
<b>Fund 10 - GENERAL FUND Total:</b>					<b>48,147.41</b>
<b>Grand Total:</b>					<b>48,147.41</b>



City of Riverside, MO

# Expense Approval Report

By Fund

Post Dates 06/16/2015 - 06/16/2015

Vendor Name	Payable Number	Post Date	Description (Item)	Account Number	Amount
<b>Fund: 10 - GENERAL FUND</b>					
HEALTH EXCHANGE, INC., TH	100791550	06/16/2015	WELLNESS SERVICES	10-115-000-21301	8,250.00
MO. VOCATIONAL ENTERPRIS	456364 RI	06/16/2015	CREDIT FOR RETURNED CHAIR	10-224-000-41600	-423.20
BOUND TREE MEDICAL LLC	70208034	06/16/2015	RETURNED MERCHANDISE	10-226-000-53707	-375.00
BOUND TREE MEDICAL LLC	81755275	06/16/2015	GAUZE ROLL, DERMACEA LO	10-226-000-53707	7.42
BOUND TREE MEDICAL LLC	81766954	06/16/2015	STERILE WATER FOR IRRIGATI	10-226-000-53707	32.00
BOUND TREE MEDICAL LLC	81769383	06/16/2015	BANDAGE, COHESIVE, BANDA	10-226-000-53707	85.69
BOUND TREE MEDICAL LLC	81750061	06/16/2015	BANDAGE, GAUZE, MEDSTOR	10-226-000-53707	188.61
LOGO U UP, LLC	2601	06/16/2015	POLO SHIRTS	10-221-000-44509	192.00
KANSAS CITY STAR, THE	311592 06/15	06/16/2015	RENEW SUBSCRIPTIONS (3)	10-112-000-34000	190.32
Q4 INDUSTRIES, LLC	41089	06/16/2015	9"2 PLY JUNIOR JUMBO TOILE	10-331-000-51011	209.30
Q4 INDUSTRIES, LLC	41090	06/16/2015	TORK ADVANCE WHITE ROLL	10-331-000-51011	600.00
JOHNSON BUSINESS CARDS	827	06/16/2015	ENVELOPES, BUS CARDS/TERP	10-224-000-32000	375.00
DAMON PURSELL	185477	06/16/2015	YARD WASTE DISPOSAL	10-331-000-21304	341.00
P1 GROUP, INC	KC68608	06/16/2015	RTU #1 REPAIR	10-337-102-41500	555.75
EDWARDS CHEMICALS, INC	027682	06/16/2015	SODIUM HYPOCHLORITE	10-336-110-52010	274.50
CAM-DEX SECURITY CORP	1003395	06/16/2015	CAMERA REPAIR	10-224-000-40709	797.25
A C PRINTING CO, INC	150945	06/16/2015	INSERTS & TRAIL GUIDES	10-112-000-21000	1,419.00
CORNELL ROOFING & SHEET	2055	06/16/2015	REPAIR ROOF/COMMUNITY C	10-337-104-41500	627.13
LOGO U UP, LLC	2604	06/16/2015	TABLE CLOTH/POLICE OFFICE	10-224-000-22900	150.00
CITY TREASURER	AB16-JUN	06/16/2015	AMBULANCE SERVICES 06/01-	10-226-000-44800	7,577.50
EDWARDS CHEMICALS, INC	027679	06/16/2015	CALCIUM CHLORIDE, CYANUR	10-336-110-52010	53.19
ALPHAGRAPHICS #190	42095	06/16/2015	NEWSLETTER	10-112-000-32001	1,038.17
BOUND TREE MEDICAL LLC	81798782	06/16/2015	SOLU-MEDROL, BANDAGE AD	10-226-000-53707	142.62
MO. VOCATIONAL ENTERPRIS	489211 RI	06/16/2015	POSTAL SCALE RISER, POCKET	10-226-000-53720	507.00
CONRAD FIRE EQUIP. INC	499532	06/16/2015	ANNUAL INSPECTION	10-226-000-41000	1,533.18
CONRAD FIRE EQUIP. INC	499533	06/16/2015	ANNUAL INSPECTION	10-226-000-41000	841.35
CONRAD FIRE EQUIP. INC	499534	06/16/2015	REPL BUCKLE, LIGHT, DOOR S	10-226-000-41000	1,239.13
CONRAD FIRE EQUIP. INC	499535	06/16/2015	SIREN REPAIR	10-226-000-40000	1,131.59
US AUTOFORCE	7417699	06/16/2015	P265/70R17 S WRGLR AT/S B	10-221-000-41000	434.04
DRAKE'S COMMUNICATIONS	1237	06/16/2015	CHAMBER OF COMMERCE PH	10-224-000-40703	255.00
PLATTE CO SHERIFF'S DEPT. -	2015-0017	06/16/2015	MEDICAL EXPENSE/WILLINGH	10-216-000-43600	11.00
PLATTE CO SHERIFF'S DEPT. -	2015-0018	06/16/2015	MEDICAL EXPENSE/BROOKS,	10-216-000-43600	12.13
PLATTE CO SHERIFF'S DEPT. -	2015-0019	06/16/2015	MEDICAL EXPENSE/REESE, S	10-216-000-43600	5.50
HELGET GAS PRODUCTS	00915393	06/16/2015	MEDICAL K & T CYLINDERS	10-226-000-56002	17.76
KATHERINE R WHITE, MS	05/31/15	06/16/2015	PROFESSIONAL SERVICE	10-115-000-30800	250.00
KATHERINE R WHITE, MS	05/31/2015	06/16/2015	PROFESSIONAL SERVICE	10-115-000-30800	125.00
LOOMIS	11634054	06/16/2015	COURIER SERVICE	10-112-000-43800	76.66
KC WIRELESS INC	45681	06/16/2015	TIMER/SOLINOID	10-221-000-41000	30.00
MISSOURI ONE CALL SYSTEM,	5050282	06/16/2015	LOCATE FEE (117)	10-331-000-21304	152.10
OFFICE DEPOT	5567845	06/16/2015	768924912-001	10-112-000-50500	58.46
OFFICE DEPOT	5567845	06/16/2015	771421083-001	10-112-000-50500	53.06
OFFICE DEPOT	5567845	06/16/2015	771631701-001	10-112-000-50500	64.67
OFFICE DEPOT	5567845	06/16/2015	770614212-001	10-112-000-50500	247.47
CARD SERVICES	0015 06/15	06/16/2015	SHERATON HOTEL - BOSTON	10-221-000-36000	422.32
CARD SERVICES	0015 06/15	06/16/2015	SOUTHWEST - BOSTON CONF	10-221-000-36000	1,078.00
CARD SERVICES	0015 06/15	06/16/2015	SHERATON HOTEL - BOSTON	10-221-000-36000	319.32
CARD SERVICES	0015 06/15	06/16/2015	PANERA - SUPERVISOR MTG	10-221-000-36200	15.46
CARD SERVICES	0015 06/15	06/16/2015	WILLOW CREEK - TRAINING	10-221-000-36400	189.00
CARD SERVICES	0015 06/15	06/16/2015	JFK SCHOOL - TRAINING	10-221-000-36414	6,600.00
CARD SERVICES	0015 06/15	06/16/2015	511 TACTICAL - UNIFORM	10-221-000-56000	248.73
CARD SERVICES	0015 06/15	06/16/2015	511 TACTICAL - UNIFORM	10-221-000-56000	0.01
CARD SERVICES	0015 06/15	06/16/2015	AT&T - COSTANZO	10-224-000-27200	30.00
CARD SERVICES	0015 06/15	06/16/2015	OFFICE MAX - SUPPLIES	10-224-000-50500	108.07

## Expense Approval Report

Post Dates: 06/16/2015 - 06/16/2015

Vendor Name	Payable Number	Post Date	Description (Item)	Account Number	Amount
CARD SERVICES	0023 06/15	06/16/2015	CHEAPER - UNIFORM	10-221-000-36408	449.73
CARD SERVICES	0023 06/15	06/16/2015	LOWES - VEH MAINT	10-221-000-40001	3.97
CARD SERVICES	0023 06/15	06/16/2015	ALAMAR - BOOTS	10-221-000-56000	239.00
CARD SERVICES	0023 06/15	06/16/2015	AT&T - MCMULLIN	10-224-000-27200	30.00
CARD SERVICES	0025 06/15	06/16/2015	RED X - FIRE CHIEF MTG	10-226-000-22900	49.14
CARD SERVICES	0025 06/15	06/16/2015	HAWG JAW - FIRE CHIEF MTG	10-226-000-22900	329.39
CARD SERVICES	0025 06/15	06/16/2015	AT&T - FOWLSTON	10-226-000-34000	14.99
CARD SERVICES	0025 06/15	06/16/2015	INT'L ASSOC OF FIRE - MEMBE	10-226-000-34500	234.00
CARD SERVICES	0025 06/15	06/16/2015	INT'L CODE - MEMBERSHIP	10-226-000-34511	135.00
CARD SERVICES	0025 06/15	06/16/2015	SUPER SHUTTLE - FIRE CHIEF	10-226-000-36000	130.00
CARD SERVICES	0025 06/15	06/16/2015	SOUTHWEST - FIRE CHIEF CO	10-226-000-36000	920.00
CARD SERVICES	0025 06/15	06/16/2015	WS DARLEY - CREDIT	10-226-000-40000	-61.86
CARD SERVICES	0025 06/15	06/16/2015	RIVERSIDE CAR WASH - VEH 8	10-226-000-41000	10.00
CARD SERVICES	0025 06/15	06/16/2015	RIVERSIDE CAR WASH - VEH 8	10-226-000-41000	10.00
CARD SERVICES	0025 06/15	06/16/2015	RIVERSIDE CAR WASH - VEH 8	10-226-000-41000	10.00
CARD SERVICES	0025 06/15	06/16/2015	MASTER TECH - VEH 800 MAI	10-226-000-41000	165.25
CARD SERVICES	0041 06/15	06/16/2015	DOUBLETREE - DC MEMORIAL	10-221-000-44524	88.81
CARD SERVICES	0041 06/15	06/16/2015	DOUBLETREE - DC MEMORIAL	10-221-000-44524	13.90
CARD SERVICES	0041 06/15	06/16/2015	O'DONOGHUES - DC MEMORI	10-221-000-44524	30.85
CARD SERVICES	0058 06/15	06/16/2015	NLAND REG CHAMBER - THAT	10-102-000-36000	25.00
CARD SERVICES	0058 06/15	06/16/2015	NLAND CHAMBER - ELECTED	10-112-000-22910	680.00
CARD SERVICES	0058 06/15	06/16/2015	NLAND REG CHAMBER - DUFF	10-112-000-22910	25.00
CARD SERVICES	0058 06/15	06/16/2015	CONF CALL - DUFFY/CARLSON	10-112-000-27000	43.19
CARD SERVICES	0058 06/15	06/16/2015	CONF CALL - DUFFY/CARLSON	10-112-000-27000	4.40
CARD SERVICES	0058 06/15	06/16/2015	AT&T - HOMER	10-112-000-27201	14.99
CARD SERVICES	0058 06/15	06/16/2015	AT&T - ROSE	10-112-000-27201	30.00
CARD SERVICES	0058 06/15	06/16/2015	AT&T - BIONDO	10-112-000-27201	14.99
CARD SERVICES	0058 06/15	06/16/2015	AT&T - LITRELL	10-112-000-27201	14.99
CARD SERVICES	0058 06/15	06/16/2015	AT&T - FULLER	10-112-000-27201	14.99
CARD SERVICES	0058 06/15	06/16/2015	ASAP LICENSE FEE - SUBSCRIP	10-112-000-34000	335.00
CARD SERVICES	0058 06/15	06/16/2015	PRICE CHOPPER - BOA MTG	10-112-000-53900	27.45
CARD SERVICES	0058 06/15	06/16/2015	PRICE CHOPPER - BOA MTG	10-112-000-53900	14.98
CARD SERVICES	0058 06/15	06/16/2015	PRICE CHOPPER - BOA MTG	10-112-000-53900	23.59
CARD SERVICES	0064 06/15	06/16/2015	AT&T - MILLS	10-112-000-27201	14.99
CARD SERVICES	0066 06/15	06/16/2015	AT&T - DUFFY	10-819-000-27200	14.99
CARD SERVICES	0074 06/15	06/16/2015	LEIBRANDS - VEH MAINT	10-221-000-41000	3,175.08
CARD SERVICES	0074 06/15	06/16/2015	AT&T - SKINROOD	10-224-000-27200	30.00
CARD SERVICES	0074 06/15	06/16/2015	OPTIC PLANET - UNIFORM	10-224-000-56000	159.78
CARD SERVICES	0082 06/15	06/16/2015	LEXIS NEXIS - SEARCH ENGINE	10-221-000-34506	75.90
CARD SERVICES	0082 06/15	06/16/2015	CELLEBRITE - FORENSIC PHON	10-221-000-34506	1,099.00
CARD SERVICES	0082 06/15	06/16/2015	WHITE CASTLE - MO POLICE	10-221-000-44524	16.12
CARD SERVICES	0082 06/15	06/16/2015	DOUBLETREE - MO POLICE	10-221-000-44524	99.51
CARD SERVICES	0082 06/15	06/16/2015	DOUBLETREE - MO POLICE	10-221-000-44524	13.90
CARD SERVICES	0082 06/15	06/16/2015	O'DONOGHUES - MO POLICE	10-221-000-44524	18.08
CARD SERVICES	0106 06/15	06/16/2015	PRIORITY CARE - MISCHARGE	10-14000	533.23
CARD SERVICES	0122 06/15	06/16/2015	ARROWHEAD - PROP ROOM	10-221-000-44507	70.92
CARD SERVICES	0122 06/15	06/16/2015	ALAMAR - UNIFORM	10-223-000-56000	68.78
CARD SERVICES	0122 06/15	06/16/2015	PAYLESS - OFFICE SUPPLIES	10-224-000-50500	27.98
CARD SERVICES	0130 06/15	06/16/2015	FASTENAL - EYEWEAR	10-331-000-52200	5.00
CARD SERVICES	0130 06/15	06/16/2015	EDWARDS - PANTS	10-331-000-56000	65.98
CARD SERVICES	0130 06/15	06/16/2015	DAY STAR - RAIN COAT	10-331-000-56000	50.00
CARD SERVICES	0130 06/15	06/16/2015	HOME DEPOT - SPIKES	10-331-000-57500	7.67
CARD SERVICES	0130 06/15	06/16/2015	REEVES - DRAIN PIPE	10-336-108-42100	45.95
CARD SERVICES	0130 06/15	06/16/2015	NUTS & BOLTS - POOL FITTIN	10-336-110-42100	17.94
CARD SERVICES	0130 06/15	06/16/2015	KAT WHOLESALE - GRAVEL	10-336-112-42100	78.00
CARD SERVICES	0171 06/15	06/16/2015	DAY STAR - UNIFORM	10-331-000-52200	25.00
CARD SERVICES	0171 06/15	06/16/2015	P & G HARDWARE - SAW CHA	10-331-000-58000	80.97
CARD SERVICES	0171 06/15	06/16/2015	PLATTE RENTAL - SAW CHAIN	10-331-000-58000	81.97
CARD SERVICES	0171 06/15	06/16/2015	REEVES - IRRIGATION REPAIR	10-336-111-42100	2.14
CARD SERVICES	0171 06/15	06/16/2015	HOME DEPOT - TAMPER TOO	10-336-111-42100	25.97

## Expense Approval Report

Post Dates: 06/16/2015 - 06/16/2015

Vendor Name	Payable Number	Post Date	Description (Item)	Account Number	Amount
CARD SERVICES	0171 06/15	06/16/2015	PARKVILLE QUARRY - GRAVEL	10-336-111-42100	141.10
CARD SERVICES	0171 06/15	06/16/2015	REEVES - PLUMBING PARTS	10-336-111-42100	57.80
CARD SERVICES	0171 06/15	06/16/2015	REEVES - PLUMBING REPAIR	10-336-111-42100	35.24
CARD SERVICES	0171 06/15	06/16/2015	GRASS PAD - SOD	10-336-111-42100	296.89
CARD SERVICES	0189 06/15	06/16/2015	FREDDY'S - MACA CONF	10-216-000-36000	6.37
CARD SERVICES	0189 06/15	06/16/2015	QT - MACA CONF	10-216-000-36000	36.30
CARD SERVICES	0189 06/15	06/16/2015	BAXTERS - MACA CONF	10-216-000-36000	73.74
CARD SERVICES	0189 06/15	06/16/2015	CHICK FIL A - MACA CONF	10-216-000-36000	7.32
CARD SERVICES	0189 06/15	06/16/2015	DOMENICO'S - MACA CONF	10-216-000-36000	19.18
CARD SERVICES	0189 06/15	06/16/2015	CASEY'S - MACA CONF	10-216-000-36000	34.00
CARD SERVICES	0189 06/15	06/16/2015	TAN TARA - MACA CONF	10-216-000-36000	475.28
CARD SERVICES	0189 06/15	06/16/2015	HYVEE - MACA CONF	10-216-000-36000	15.00
CARD SERVICES	0189 06/15	06/16/2015	AMERICAN - CREDIT	10-221-000-44524	-151.09
CARD SERVICES	0189 06/15	06/16/2015	AMERICAN - CREDIT	10-221-000-44524	-151.09
CARD SERVICES	0189 06/15	06/16/2015	AMERICAN - CREDIT	10-221-000-44524	-151.09
CARD SERVICES	0189 06/15	06/16/2015	PAYLESS - OFFICE SUPPLIES	10-223-000-50031	172.49
CARD SERVICES	0189 06/15	06/16/2015	ALL ABOUT SHIPPING	10-223-000-50031	18.09
CARD SERVICES	0189 06/15	06/16/2015	AT&T - PHILLIPS	10-224-000-27200	14.99
CARD SERVICES	0189 06/15	06/16/2015	PAYLESS - OFFICE SUPPLIES	10-224-000-50500	1,798.00
CARD SERVICES	0189 06/15	06/16/2015	WALMART - SWEARING IN	10-226-000-22900	8.98
CARD SERVICES	0197 06/15	06/16/2015	NALISA - CHAIR MASSAGE	10-115-000-21301	270.00
CARD SERVICES	0197 06/15	06/16/2015	NRPA HOUSING - CONF	10-341-000-36000	155.68
CARD SERVICES	0197 06/15	06/16/2015	SCRUMPTIOUS - LUNCH/LEAR	10-341-100-44400	673.50
CARD SERVICES	0197 06/15	06/16/2015	RED X - REC PROGRAM	10-341-100-44522	167.80
CARD SERVICES	0197 06/15	06/16/2015	RED X - OPEN GYM	10-341-100-44522	4.35
CARD SERVICES	0197 06/15	06/16/2015	RED X - SR PROG	10-341-100-44522	23.38
CARD SERVICES	0197 06/15	06/16/2015	HYVEE - SR PROG	10-341-100-44522	35.99
CARD SERVICES	0213 06/15	06/16/2015	HOME DEPOT - VACUUM REP	10-336-110-42100	3.46
CARD SERVICES	0213 06/15	06/16/2015	HOME DEPOT - FLOOR REPAI	10-336-110-42100	26.24
CARD SERVICES	0213 06/15	06/16/2015	LOWE'S - SWEEPER REPAIR	10-336-110-42100	34.04
CARD SERVICES	0221 06/15	06/16/2015	FASTENAL - EYE WEAR	10-331-000-52200	5.00
CARD SERVICES	0221 06/15	06/16/2015	FASTENAL - MEASURE TAPE	10-331-000-52700	25.25
CARD SERVICES	0221 06/15	06/16/2015	LOWES - CONCRETE SEALER	10-336-110-42100	91.62
CARD SERVICES	0221 06/15	06/16/2015	ABOVE & BEYOND - POOL CH	10-336-110-52010	550.09
CARD SERVICES	0221 06/15	06/16/2015	ABOVE & BEYOND - FILTER PU	10-336-112-42100	77.00
CARD SERVICES	0247 06/15	06/16/2015	PARKVILLE FRAMING - MAYO	10-112-000-22910	25.50
CARD SERVICES	0247 06/15	06/16/2015	ARGOSY - CHAMBER ADMIN	10-112-000-36100	108.24
CARD SERVICES	0247 06/15	06/16/2015	ARGOSY - COAT DRIVE MTG	10-112-000-36100	12.01
CARD SERVICES	0247 06/15	06/16/2015	PRICE CHOPPER - MTG	10-112-000-36100	51.42
CARD SERVICES	0247 06/15	06/16/2015	PRICE CHOPPER - BENEFIT FAI	10-112-000-36100	18.76
CARD SERVICES	0247 06/15	06/16/2015	RED X - MTG	10-112-000-36100	23.32
CARD SERVICES	0247 06/15	06/16/2015	PRICE CHOPPER - BOA SUPPLI	10-112-000-53900	19.98
CARD SERVICES	0247 06/15	06/16/2015	WALMART - BOA SUPPLIES	10-112-000-53900	19.38
CARD SERVICES	0247 06/15	06/16/2015	JOSE PEPPERS - PROM PRIZE	10-115-000-21300	50.00
CARD SERVICES	0247 06/15	06/16/2015	TREZO - PROM PRIZE	10-115-000-21300	50.00
CARD SERVICES	0247 06/15	06/16/2015	ARGOSY - CHAMBER PS	10-221-000-36200	15.45
CARD SERVICES	0247 06/15	06/16/2015	ARGOSY - CHAMBER PS ADMI	10-224-000-22900	15.45
CARD SERVICES	0247 06/15	06/16/2015	ARGOSY - CHAMBER FIRE	10-226-000-34511	30.90
CARD SERVICES	0254 06/15	06/16/2015	HEARTLAND TIRE - TIRE RECY	10-331-000-26400	216.00
CARD SERVICES	0254 06/15	06/16/2015	HEARTLAND TIRE - FOAM FILL	10-331-000-40000	296.58
CARD SERVICES	0254 06/15	06/16/2015	JERRY'S OUTDOOR - BLADES/	10-331-000-40000	271.28
CARD SERVICES	0254 06/15	06/16/2015	HEARTLAND TIRE - PATCH KIT	10-331-000-40000	15.00
CARD SERVICES	0254 06/15	06/16/2015	PLATTE RENTAL - STRING	10-331-000-40000	124.79
CARD SERVICES	0254 06/15	06/16/2015	HANNA RUBBER - MOWER RE	10-331-000-40000	22.67
CARD SERVICES	0254 06/15	06/16/2015	HOME DEPOT - KNIFE	10-331-000-52700	24.97
CARD SERVICES	0254 06/15	06/16/2015	EDWARDS - SHOES	10-331-000-56000	160.69
CARD SERVICES	0254 06/15	06/16/2015	KC WINWATER - CLAMP	10-336-111-42100	150.00
CARD SERVICES	0254 06/15	06/16/2015	FASTENAL - PUMP WORK	10-336-111-42100	31.83
CARD SERVICES	0254 06/15	06/16/2015	REEVES - IRRIGATION REPAIR	10-336-111-42100	81.12
CARD SERVICES	0254 06/15	06/16/2015	REEVES - FOUNTAIN WORK	10-336-111-42100	30.22



## Expense Approval Report

Post Dates: 06/16/2015 - 06/16/2015

Vendor Name	Payable Number	Post Date	Description (Item)	Account Number	Amount
CARD SERVICES	0254 06/15	06/16/2015	ABOVE AND BEYOND - LINER	10-336-112-42100	81.75
CARD SERVICES	0254 06/15	06/16/2015	HANNA RUBBER - O RINGS	10-336-112-42100	10.50
CARD SERVICES	0254 06/15	06/16/2015	HOME DEPOT - WEDGE ANCH	10-337-103-41500	25.04
CARD SERVICES	0262 06/15	06/16/2015	HOME DEPOT - SHOWER	10-226-000-40000	28.80
CARD SERVICES	0262 06/15	06/16/2015	HOME DEPOT - BUS PARTS	10-226-000-40000	15.32
CARD SERVICES	0262 06/15	06/16/2015	ADVANCE AUTO - BUS PARTS	10-226-000-40000	813.96
CARD SERVICES	0262 06/15	06/16/2015	RED X - BUS PARTS	10-226-000-40000	4.99
CARD SERVICES	0262 06/15	06/16/2015	AMAZON - BUS PARTS	10-226-000-40000	274.95
CARD SERVICES	0262 06/15	06/16/2015	AMAZON - BUS PARTS	10-226-000-40000	47.67
CARD SERVICES	0262 06/15	06/16/2015	HOME DEPOT - BUS PARTS	10-226-000-40000	22.97
CARD SERVICES	0262 06/15	06/16/2015	HOME DEPOT - BUS PARTS	10-226-000-40000	37.89
CARD SERVICES	0262 06/15	06/16/2015	ADVANCE AUTO - CREDIT	10-226-000-40000	-63.96
CARD SERVICES	0262 06/15	06/16/2015	ALL ABOUT SHIPPING	10-226-000-40000	7.76
CARD SERVICES	0262 06/15	06/16/2015	WITMER - HOSE TESTER	10-226-000-53720	126.95
CARD SERVICES	0262 06/15	06/16/2015	WITMER - STATION SUPPLIES	10-226-000-53720	74.99
CARD SERVICES	0270 06/15	06/16/2015	FOUR SEASONS - BETTERMEN	10-226-000-36000	262.65
CARD SERVICES	0270 06/15	06/16/2015	FOUR SEASONS - BETTERMEN	10-226-000-36000	2.49
CARD SERVICES	0270 06/15	06/16/2015	FOUR SEASONS - BETTERMEN	10-226-000-36000	18.96
CARD SERVICES	0270 06/15	06/16/2015	BREAKTIME - BETTERMENT T	10-226-000-36000	42.00
CARD SERVICES	0270 06/15	06/16/2015	JJ TWIGS PIZZA - BETTERMEN	10-226-000-36000	13.08
CARD SERVICES	0270 06/15	06/16/2015	FIRE FIT HEALTH - BETTERME	10-226-000-36400	95.00
CARD SERVICES	0270 06/15	06/16/2015	NAPA AUTO - FILTER	10-226-000-40000	11.28
CARD SERVICES	0270 06/15	06/16/2015	RED X - SUPPLIES	10-226-000-53707	13.73
CARD SERVICES	0270 06/15	06/16/2015	HOME DEPOT - PROPANE	10-226-000-53720	14.97
CARD SERVICES	0270 06/15	06/16/2015	ARROW FABRIC - PPE REPAIR	10-226-000-56002	360.50
EDWARDS CHEMICALS, INC	028021	06/16/2015	MURIATIC ACID	10-336-110-52010	264.70
CARD SERVICES	0288 06/15	06/16/2015	OFFICE MAX - SUPPLIES	10-226-000-36400	21.36
CARD SERVICES	0304 06/15	06/16/2015	DOUBLETREE - DC MEMORIAL	10-221-000-44524	110.21
CARD SERVICES	0304 06/15	06/16/2015	DOUBLETREE - DC MEMORIAL	10-221-000-44524	13.90
CARD SERVICES	0304 06/15	06/16/2015	O'DONOGHUES - DC MEMORI	10-221-000-44524	41.46
CARD SERVICES	0312 06/15	06/16/2015	HERITAGE - MOWER II	10-331-000-40000	44.58
CARD SERVICES	0312 06/15	06/16/2015	JERRY'S OUTDOOR - MOWER	10-331-000-40000	139.05
CARD SERVICES	0312 06/15	06/16/2015	DAY STAR - RAIN COAT	10-331-000-56000	25.00
CARD SERVICES	0312 06/15	06/16/2015	EDWARDS - UNIFORM	10-331-000-56000	42.99
CARD SERVICES	0312 06/15	06/16/2015	GRASS PAD - SOD	10-336-111-25400	171.24
CARD SERVICES	0312 06/15	06/16/2015	REEVES - PUMP REPAIR	10-336-111-42100	394.18
CARD SERVICES	0312 06/15	06/16/2015	LOWES - IRRIGATION REPAIR	10-336-111-42100	9.41
CARD SERVICES	0312 06/15	06/16/2015	REEVES - IRRIGATION WORK	10-336-112-42100	3.10
CARD SERVICES	0312 06/15	06/16/2015	MAR BECK - SWEEPER BELTS	10-337-102-41500	26.91
CARD SERVICES	0338 06/15	06/16/2015	SAFETY - BOAT TRAINING	10-226-000-36400	41.50
CARD SERVICES	0338 06/15	06/16/2015	SAFETY - BOAT TRAINING	10-226-000-36400	41.50
CARD SERVICES	0338 06/15	06/16/2015	FASTENAL - PAINT BRUSHES	10-226-000-40000	3.67
CARD SERVICES	0338 06/15	06/16/2015	HOME DEPOT - BUS PARTS	10-226-000-40000	215.48
CARD SERVICES	0353 06/15	06/16/2015	DOMENICO'S - INCODE TRAIN	10-216-000-36000	22.77
CARD SERVICES	0353 06/15	06/16/2015	TAN TARA - INCODE TRAININ	10-216-000-36000	427.88
CARD SERVICES	0353 06/15	06/16/2015	MARRIOTT - INCODE TRAININ	10-216-000-36000	5.78
CAM-DEX SECURITY CORP	100150601	06/16/2015	SOFTWARE SUPPORT	10-224-000-40709	3,200.00
CARD SERVICES	1161 06/15	06/16/2015	DOUBLE TREE - DC MEMORIA	10-221-000-44524	99.51
CARD SERVICES	1161 06/15	06/16/2015	O'DONOGHUES - DC MEMORI	10-221-000-44524	20.67
CARD SERVICES	1161 06/15	06/16/2015	BURGER KING - DC MEMORIA	10-221-000-44524	19.38
CARD SERVICES	1195 06/15	06/16/2015	LIFELINE - WARRIOR TRAININ	10-221-000-36400	836.00
CARD SERVICES	1211 06/15	06/16/2015	NLETC - DT TRAINING	10-221-000-36411	1,795.00
CARD SERVICES	1245 06/15	06/16/2015	HYVEE - TRAINING	10-226-000-22906	29.66
CARD SERVICES	1245 06/15	06/16/2015	REG JUSTICE - SUBSCRIPTION	10-226-000-34506	15.00
CARD SERVICES	1245 06/15	06/16/2015	AT&T - SHELTON	10-226-000-34506	14.99
CARD SERVICES	1245 06/15	06/16/2015	SMOKEHOUSE - TRAINING	10-226-000-36001	12.03
CARD SERVICES	1245 06/15	06/16/2015	PANCEROS - TRAINING	10-226-000-36001	9.75
CARD SERVICES	1245 06/15	06/16/2015	FIVE GUYS - TRAINING	10-226-000-36001	8.48
CARD SERVICES	1245 06/15	06/16/2015	DENNY'S - TRAINING	10-226-000-36001	14.69
CARD SERVICES	1245 06/15	06/16/2015	SHRED IT - DOC DESTRUCTIO	10-226-000-40000	80.25

## Expense Approval Report

Post Dates: 06/16/2015 - 06/16/2015

Vendor Name	Payable Number	Post Date	Description (Item)	Account Number	Amount
CARD SERVICES	1245 06/15	06/16/2015	LEGEND DATA - SAFETY VEST	10-226-000-56002	86.52
CARD SERVICES	1252 06/15	06/16/2015	CORNER CAFE - DISPATCH MT	10-223-000-36400	33.56
CARD SERVICES	1286 06/15	06/16/2015	ALERT ALL CORP - HELMETS	10-226-000-22903	733.50
CARD SERVICES	1286 06/15	06/16/2015	INT'L CODE - DUES	10-226-000-34511	55.00
CARD SERVICES	1286 06/15	06/16/2015	INT'L CODE - RECERT	10-226-000-34511	75.00
CARD SERVICES	1286 06/15	06/16/2015	RIVERSIDE CAR WASH	10-226-000-41000	10.00
CARD SERVICES	1286 06/15	06/16/2015	RIVERSIDE CAR WASH	10-226-000-41000	10.00
CARD SERVICES	1351 06/15	06/16/2015	ALAMAR - UNIFORM	10-221-000-56000	12.00
CARD SERVICES	1393 06/15	06/16/2015	HOME DEPOT - REPAIR WATE	10-336-111-42100	22.61
CARD SERVICES	1393 06/15	06/16/2015	HOME DEPOT - REPAIR WATE	10-336-111-42100	38.93
CARD SERVICES	1393 06/15	06/16/2015	Q4 INDUSTRIES - SUPPLIES	10-336-111-42100	2,039.37
CARD SERVICES	1393 06/15	06/16/2015	HOME DEPOT - REPAIR WATE	10-336-111-42100	35.68
CARD SERVICES	1427 06/15	06/16/2015	EB 13TH - DC MEMORIAL	10-221-000-36400	130.00
CARD SERVICES	1427 06/15	06/16/2015	US AIRWAYS - DC MEMORIAL	10-221-000-44524	25.00
CARD SERVICES	1427 06/15	06/16/2015	LALO'S - DC MEMORIAL	10-221-000-44524	11.78
CARD SERVICES	1427 06/15	06/16/2015	SOUTHWEST - DC MEMORIAL	10-221-000-44524	600.00
CARD SERVICES	1427 06/15	06/16/2015	CHOPHOUSE - DC MEMORIAL	10-221-000-44524	38.95
CARD SERVICES	1427 06/15	06/16/2015	MCDONALD'S - DC MEMORIA	10-221-000-44524	9.12
CARD SERVICES	1427 06/15	06/16/2015	CHOPHOUSE - DC MEMORIAL	10-221-000-44524	52.00
CARD SERVICES	1427 06/15	06/16/2015	LUKE'S LOBSTER - DC MEMOR	10-221-000-44524	21.60
CARD SERVICES	1427 06/15	06/16/2015	IRISH CHANNEL - DC MEMORI	10-221-000-44524	14.49
CARD SERVICES	1427 06/15	06/16/2015	WHARF - DC MEMORIAL	10-221-000-44524	25.60
CARD SERVICES	1427 06/15	06/16/2015	FAIRFIELD INN - DC MEMORIA	10-221-000-44524	1,415.24
CARD SERVICES	1443 06/15	06/16/2015	MCDONALD'S - DC MEMORIA	10-221-000-44524	9.98
CARD SERVICES	1443 06/15	06/16/2015	CHIPOTLE - DC MEMORIAL	10-221-000-44524	11.50
CARD SERVICES	1443 06/15	06/16/2015	CAPTAIN WHITES - DC MEMO	10-221-000-44524	56.85
CARD SERVICES	1443 06/15	06/16/2015	DOUBLETREE - DC MEMORIAL	10-221-000-44524	88.81
CARD SERVICES	1443 06/15	06/16/2015	PANERA - DC MEMORIAL	10-221-000-44524	8.89
CARD SERVICES	1443 06/15	06/16/2015	IRISH CHANNEL - DC MEMORI	10-221-000-44524	18.10
CARD SERVICES	1443 06/15	06/16/2015	FAIRFIELD INN - DC MEMORIA	10-221-000-44524	1,415.24
CARD SERVICES	1443 06/15	06/16/2015	LALO'S - DC MEMORIAL	10-221-000-44524	11.78
CARD SERVICES	1443 06/15	06/16/2015	SHUTTLE - DC MEMORIAL	10-221-000-44524	20.00
CARD SERVICES	1443 06/15	06/16/2015	US AIRWAYS - DC MEMORIAL	10-221-000-44524	25.00
CARD SERVICES	1443 06/15	06/16/2015	CHOPHOUSE - DC MEMORIAL	10-221-000-44524	71.00
CARD SERVICES	1443 06/15	06/16/2015	DOUBLETREE - DC MEMORIAL	10-221-000-44524	13.90
CARD SERVICES	1443 06/15	06/16/2015	O'DONOGHUES - DC MEMORI	10-221-000-44524	27.74
CARD SERVICES	1443 06/15	06/16/2015	CAPTAIN WHITES - DC MEMO	10-221-000-44524	39.92
CARD SERVICES	1443 06/15	06/16/2015	ALL ABOUT SHIPPING	10-224-000-51500	7.75
HEARTLAND OCCUPATIONAL	14560	06/16/2015	DRUG & ALCOHOL SCREENS	10-115-000-30800	174.00
CARD SERVICES	1526 06/15	06/16/2015	MIDWAY FORD - TRK 83 FRO	10-331-000-40000	1,017.54
CARD SERVICES	1526 06/15	06/16/2015	RED X - CAMERA STAND	10-331-000-53700	2.39
CARD SERVICES	1526 06/15	06/16/2015	POOLSIDE SALES - VACUUM S	10-336-110-42100	42.55
CARD SERVICES	1526 06/15	06/16/2015	RED X - BRACKET FOR SIGNS	10-336-110-42100	11.58
CARD SERVICES	1526 06/15	06/16/2015	FASTENAL - DRILL BIT	10-336-110-42100	26.96
CARD SERVICES	1526 06/15	06/16/2015	FAST SIGNS - OPEN/CLOSED SI	10-336-110-42100	153.01
CARD SERVICES	1526 06/15	06/16/2015	PHILLIPS - MULCH	10-336-111-42100	318.34
CARD SERVICES	1526 06/15	06/16/2015	REEVES - CLOCK TOWER REPA	10-336-111-42100	8.65
CARD SERVICES	1526 06/15	06/16/2015	PARKVILLE QUARRY - GRAVEL	10-336-111-42100	145.86
CARD SERVICES	1526 06/15	06/16/2015	ABOVE & BEYOND - 2 PUMP C	10-336-112-42100	1,950.00
CARD SERVICES	1526 06/15	06/16/2015	PHILLIPS - MULCH	10-336-112-42100	318.34
CARD SERVICES	1526 06/15	06/16/2015	AMAZON - FOUNTAIN PUMP	10-336-112-42100	23.95
CARD SERVICES	1526 06/15	06/16/2015	PHILLIPS - MULCH	10-337-102-41500	318.32
CARD SERVICES	1526 06/15	06/16/2015	INDEPENDENT DOOR - BAY D	10-337-103-41500	561.00
CARD SERVICES	1526 06/15	06/16/2015	SIGNAL GROUP - GATE CONTR	10-337-103-41500	55.88
CARD SERVICES	1542 06/15	06/16/2015	ARROWHEAD - MISCHARGE	10-221-000-44512	41.57
CARD SERVICES	1542 06/15	06/16/2015	ARROWHEAD - CREDIT	10-221-000-44512	-41.57
CARD SERVICES	1542 06/15	06/16/2015	ALAMAR - UNIFORM	10-221-000-56000	43.40
CARD SERVICES	1567 06/15	06/16/2015	LEIBRANDS - BATTERY	10-332-000-41000	125.50
CARD SERVICES	1567 06/15	06/16/2015	FASTENAL - PAINT	10-332-000-52700	2.47
CARD SERVICES	1708 05/01	06/16/2015	CAPTAIN WHITES - DC MEMO	10-221-000-44524	31.00



## Expense Approval Report

Post Dates: 06/16/2015 - 06/16/2015

Vendor Name	Payable Number	Post Date	Description (Item)	Account Number	Amount
CARD SERVICES	1708 05/01	06/16/2015	FFLD INN - DC MEMORIAL	10-221-000-44524	1,415.24
CARD SERVICES	1708 05/01	06/16/2015	CAPTAIN WHITES - DC MEMO	10-221-000-44524	53.01
CARD SERVICES	1708 05/01	06/16/2015	LUKES LOBSTER - DC MEMORI	10-221-000-44524	18.70
CARD SERVICES	1708 05/01	06/16/2015	IRISH CHANNEL - DC MEMORI	10-221-000-44524	21.10
CARD SERVICES	1708 05/01	06/16/2015	CHOPHOUSE - DC MEMORIAL	10-221-000-44524	23.70
CARD SERVICES	1708 05/01	06/16/2015	BEN & JERRY'S - DC MEMORIA	10-221-000-44524	6.00
CARD SERVICES	1708 05/01	06/16/2015	MCDONALDS - DC MEMORIAL	10-221-000-44524	9.12
CARD SERVICES	1708 05/01	06/16/2015	US AIRWAYS - DC MEMORIAL	10-221-000-44524	60.00
CARD SERVICES	1708 05/01	06/16/2015	CHOPHOUSE - DC MEMORIAL	10-221-000-44524	38.45
CARD SERVICES	1708 05/01	06/16/2015	CURB - DC MEMORIAL	10-221-000-44524	19.92
CARD SERVICES	1708 05/01	06/16/2015	ALAMAR - UNIFORM	10-221-000-56000	83.97
CARD SERVICES	1724 06/15	06/16/2015	KC SHOE - UNIFORM	10-221-000-56000	270.00
CARD SERVICES	1724 06/15	06/16/2015	ALAMAR - UNIFORM	10-221-000-56000	27.99
CARD SERVICES	1880 06/15	06/16/2015	FUZZY'S TOP - TRAINING	10-221-000-36000	10.49
CARD SERVICES	1880 06/15	06/16/2015	HOLIDAY INN - TRAINING	10-221-000-36000	318.54
CARD SERVICES	1880 06/15	06/16/2015	HIGHLANDS - TRAINING	10-221-000-36000	34.23
CARD SERVICES	1880 06/15	06/16/2015	HOLIDAY INN - TRAINING	10-221-000-36000	13.21
CARD SERVICES	1898 06/15	06/16/2015	STREET CRIMES - TRAINING	10-221-000-36400	399.00
CARD SERVICES	1914 06/15	06/16/2015	SARPINO'S - BOA MTG	10-112-000-53900	105.00
CARD SERVICES	1914 06/15	06/16/2015	SMOKIN GUNS - BOA MTG	10-112-000-53900	171.10
CARD SERVICES	1914 06/15	06/16/2015	HONEY BAKED HAM - BOA M	10-112-000-53900	120.92
CARD SERVICES	1914 06/15	06/16/2015	JASON'S DELI - BOA MTG	10-112-000-53900	105.80
CARD SERVICES	1914 06/15	06/16/2015	JASON'S DELI - BOA MTG	10-112-000-53900	10.00
CARD SERVICES	1914 06/15	06/16/2015	ABUELOS - BOA MTG	10-112-000-53900	242.82
CARD SERVICES	1963 06/15	06/16/2015	AT&T - RASCO	10-112-000-27201	14.99
CARD SERVICES	1963 06/15	06/16/2015	KC BIZ JOURNAL - RENEWAL	10-112-000-34000	91.51
CARD SERVICES	1963 06/15	06/16/2015	CORNER CAFE - CERNER MTG	10-112-000-36100	21.67
CARD SERVICES	1963 06/15	06/16/2015	CERNER - MTG	10-112-000-36100	4.53
CARD SERVICES	1963 06/15	06/16/2015	HYVEE - WELLNESS FAIR	10-115-000-21301	97.84
CARD SERVICES	1963 06/15	06/16/2015	AMAZON - WELLNESS	10-115-000-21301	40.95
TOWN & COUNTRY BUILDING	1995	06/16/2015	JANITORIAL SERVICE - JUNE	10-337-103-44200	1,620.00
TOWN & COUNTRY BUILDING	1997	06/16/2015	JANITORIAL SERVICE - JUNE	10-337-104-44203	739.00
PATEK & ASSOCIATES LLC	3163	06/16/2015	CONSULTING SERVICE - JUNE	10-112-000-21300	3,500.00
ENET, LLC	4186	06/16/2015	DELL OPTIPLEX I7 WORKSTATI	10-112-000-40500	5,548.02
ENET, LLC	4191	06/16/2015	REPLACEMENT BATTERY BAC	10-112-000-40500	1,099.75
ENET, LLC	4192	06/16/2015	DOMAIN RENEWAL FEES	10-112-000-40700	483.00
ENET, LLC	4193	06/16/2015	PS SAFETY TWO FACTOR AUT	10-224-000-40500	2,885.00
ENET, LLC	4194	06/16/2015	SERVER 2012 SOFTWARE UPG	10-112-000-40500	2,595.00
ENET, LLC	4195	06/16/2015	LOJACK FOR LAPTOPS	10-112-000-40500	1,062.00
ENET, LLC	4198	06/16/2015	RICOH COLOR MFP FAX PRINT	10-216-000-40500	2,369.59
EMBASSY LANDSCAPE GROUP	71766	06/16/2015	GROUNDS MAINT	10-331-000-21304	3,801.16
ABBY G PENNELL, ATTORNEY	033	06/16/2015	?INDIGENT LEGAL SERVICES	10-216-000-21301	900.00
MR MAT	06/10/15	06/16/2015	SWIPE TOWELS, DUST MOP,	10-337-104-41500	37.54
INTERPRETERS, INC	22663	06/16/2015	INTERPRETER SERVICE 06/03/	10-216-000-21302	72.25
MR MAT	511956	06/16/2015	ENTRY MATS	10-337-102-41500	27.45
MR MAT	511957	06/16/2015	ENTRY MATS	10-337-101-41500	21.89
MR MAT	511959	06/16/2015	ENTRY MATS	10-337-103-41500	26.99
PLATTE CO SHERIFF'S DEPT. -	1227	06/16/2015	PRISONER HOUSING/MAY	10-216-000-43600	3,045.00
MO POLICE CHIEF ASSOC	2878	06/16/2015	ENTRY LEVEL - SELF TEST	10-115-000-30800	300.00
AL BOWMAN & SON'S S.O.S	32124	06/16/2015	KEYS	10-224-000-50500	13.50
KC WIRELESS INC	45705	06/16/2015	CROWN VIC/REMOVED LIGHT	10-221-000-41000	180.00
TOWN & COUNTRY DISPOSAL	58837	06/16/2015	DISPOSAL SERVICE/PUBLIC W	10-331-000-26000	600.00
MARSH USA INC.	170803900862	06/16/2015	RAIL PROTECTIVE LIABILITY	10-112-000-24100	8,111.25
JAY'S UNIFORMS	23546	06/16/2015	UNIFORM SHIRTS & BRASS	10-226-000-56000	289.26
MR MAT	511683	06/16/2015	ENTRY MATS	10-337-101-41500	21.89
MR MAT	511684	06/16/2015	ENTRY MATS	10-337-103-41500	29.39
MR MAT	511685	06/16/2015	ENTRY MATS	10-337-102-41500	27.45
CONRAD FIRE EQUIP. INC	499598	06/16/2015	ANNUAL P M SERVICE	10-226-000-41000	3,854.60
COWELL INSURANCE GROUP,	72919	06/16/2015	POLICY #37BPEDR8223 PUBLI	10-112-000-24100	1,277.00
BOUND TREE MEDICAL LLC	81809375	06/16/2015	DEXTROSE 50% 25GM 50ML L	10-226-000-53707	7.80

## Expense Approval Report

Post Dates: 06/16/2015 - 06/16/2015

Vendor Name	Payable Number	Post Date	Description (Item)	Account Number	Amount
SWARTZ CONSULTING LLC	15091	06/16/2015	TECHNOLOGY SUPPORT	10-224-000-40703	325.00
KCATA	20150500117.	06/16/2015	CONTRACT AGREEMENT/201	10-112-000-22300	1,177.00
INFORMATION FUND	46051	06/16/2015	MONTHLY SALES, USE TAX RE	10-112-000-40700	105.00
MOBILFONE	6028139	06/16/2015	PAGER RENT	10-224-000-27400	240.00
SHRED-IT US JV LLC	9406109561	06/16/2015	SHREDDING/CITY HALL	10-112-000-50500	64.20
DAMON PURSELL	185860	06/16/2015	YARD WASTE DISPOSAL	10-331-000-26000	377.00
KCMTOA	2015-18	06/16/2015	2015 TEAM MEMBERSHIP	10-221-000-53706	175.00
AFLAC	457567	06/16/2015	EMPLOYEE PREMIUMS	10-20008	90.40
<b>Fund 10 - GENERAL FUND Total:</b>					<b>129,274.96</b>

**Fund: 12 - DUI FUND**

CARD SERVICES	0163 06/15	06/16/2015	CHIEF SUPPLY - BLOOD KITS	12-221-000-31701	56.90
CARD SERVICES	1211 06/15	06/16/2015	OFFICE PROSECUTION - TRAIN	12-221-000-31701	127.69
<b>Fund 12 - DUI FUND Total:</b>					<b>184.59</b>

**Fund: 21 - CAPITAL IMPROVEMENTS FUND**

K & G STRIPING, INC.	15089-03a	06/16/2015	SUPPLY & INSTALL 22 HIP NO	21-025-000-53000	2,640.00
K & G STRIPING, INC.	15089-03b	06/16/2015	REMOVE EXISTING POLES, BA	21-025-000-53000	975.00
SPENCER FANE BRITT & BRO	523169	06/16/2015	APRIL REFUNDING	21-020-000-51007	2,379.50
SPENCER FANE BRITT & BRO	523171	06/16/2015	RINKER - APRIL	21-020-000-51007	1,402.50
SPENCER FANE BRITT & BRO	523172	06/16/2015	WEST SIDE - APRIL	21-020-000-51007	375.00
SPENCER FANE BRITT & BRO	523173	06/16/2015	HORIZONS WEST - APRIL	21-020-000-51007	2,582.50
SPENCER FANE BRITT & BRO	523174	06/16/2015	VAN TRUST - APRIL	21-020-000-51007	1,406.25
SPENCER FANE BRITT & BRO	523175	06/16/2015	HORIZONS V - APRIL	21-020-000-51007	52,878.75
SPENCER FANE BRITT & BRO	523200	06/16/2015	PREMIUM WATERS - APRIL	21-020-000-51007	370.50
HOUSTON EXCAVATING	108	06/16/2015	STRIP LOT & INSTALL TRACKIN	21-020-000-54000	2,431.03
<b>Fund 21 - CAPITAL IMPROVEMENTS FUND Total:</b>					<b>67,441.03</b>

**Fund: 23 - Horizons CID**

EMBASSY LANDSCAPE GROUP	71884	06/16/2015	GROUNDS MAINTENANCE	23-331-000-21300	612.50
<b>Fund 23 - Horizons CID Total:</b>					<b>612.50</b>

**Fund: 30 - CAPITAL EQUIPMENT FUND**

911 CUSTOM, LLC	18069	06/16/2015	GRADIENT OPTI-SCENELIGHT,	30-221-000-60000	1,284.00
ENET, LLC	4184	06/16/2015	DELL OPTIPLEX I7 WORKSTATI	30-112-000-62000	5,548.02
ENET, LLC	4185	06/16/2015	DELL OPTIPLEX I7 WORKSTATI	30-112-000-62000	1,849.34
ENET, LLC	4187	06/16/2015	DELL OPTIPLEX I7 WORKSTATI	30-112-000-62000	1,849.34
ENET, LLC	4188	06/16/2015	DELL OPTIPLEX I7 WORKSTATI	30-112-000-62000	2,774.01
ENET, LLC	4190	06/16/2015	REPL MAIN NETWORK ROUTE	30-112-000-62000	1,169.24
ENET, LLC	4189	06/16/2015	DELL LATITUDE I7 LAPTOP, PR	30-112-000-62000	2,572.90
ENET, LLC	4200	06/16/2015	DELL OPTIPLEX I7 WORKSTATI	30-112-000-62000	924.67
ENET, LLC	4201	06/16/2015	DELL LATITUDE I7 LAPTOP (2)	30-112-000-62000	2,497.90
ENET, LLC	4202	06/16/2015	DELL LATITUDE RUGGED LAPT	30-112-000-62000	3,755.58
<b>Fund 30 - CAPITAL EQUIPMENT FUND Total:</b>					<b>24,225.00</b>

**Fund: 50 - OFFICER TRAINING FUND**

CARD SERVICES	1542 06/15	06/16/2015	MO COALITION - CIT CONF	50-221-000-31700	25.00
<b>Fund 50 - OFFICER TRAINING FUND Total:</b>					<b>25.00</b>

**Fund: 52 - PAL FUND**

MWG MESTMAKER INSURAN	07/01/15	06/16/2015	FPAL INSURANCE	52-221-000-44510	1,670.01
DOTTE BROS BBQ	20150706-1	06/16/2015	FPAL GOLF TOURNAMENT	52-221-000-44510	2,000.00
<b>Fund 52 - PAL FUND Total:</b>					<b>3,670.01</b>

**Grand Total: 225,433.09**

**A RESOLUTION APPOINTING NATHAN CRETSINGER TO THE PLANNING & ZONING COMMISSION**

**WHEREAS**, the composition of the Riverside Planning & Zoning Commission is set forth in the City Code and provides for the appointment of nine (9) Planning & Zoning Commission citizen members by the Mayor with the approval of the Board of Aldermen; and

**WHEREAS**, Al Bowman was reappointed to the Planning & Zoning Commission in 2014 and his term was expiring in May 2018, or until a successor was duly appointed; and

**WHEREAS**, Al Bowman has resigned from the Planning & Zoning Commission because of his election to the Board of Aldermen and there is a need to fill the vacancy created by such resignation; and

**WHEREAS**, the Mayor desires to appoint Nathan Cretsinger to the position vacated by Al Bowman on the Planning and Zoning Commission, to the remainder of the term vacated by Al Bowman expiring in May 2018, or until a successor is duly appointed; and

**WHEREAS**, the Board of Aldermen find it is in the best interest of the city to approve and ratify such appointment as proposed by the Mayor;

**NOW THEREFORE, BE IT RESOLVED BY THE BOARD OF ALDERMEN OF THE CITY OF RIVERSIDE, MISSOURI, AS FOLLOWS:**

**THAT** Nathan Cretsinger, Ward I, 4435 Sienna Ridge, Riverside Missouri; is hereby appointed by the Mayor and ratified by the Board of Aldermen as a member of the Planning & Zoning Commission to the remainder of a 4 year term ending in May 2018, or until a successor is duly appointed; and

**PASSED AND ADOPTED** by the Board of Aldermen and **APPROVED** by the Mayor of the City of Riverside, Missouri, the \_\_\_\_ day of June, 2015.

---

Kathleen L. Rose, Mayor

ATTEST:

---

Robin Littrell, City Clerk

**RESOLUTION NO. R – 2015-031**

**A RESOLUTION AUTHORIZING THE PURCHASE OF WORKERS COMPENSATION INSURANCE FROM MIDWEST PUBLIC RISK FOR THE ANNUAL PREMIUM RENEWAL IN AN AMOUNT NOT TO EXCEED \$159,054.00**

**WHEREAS**, the City of Riverside has a need for workers compensation insurance; and

**WHEREAS**, the City of Riverside in the adoption of its purchasing policy requires all expenditures in excess of \$10,000 to be presented to the Board of Aldermen for approval and the City's insurance carrier for workers compensation has presented an invoice in the amount of \$159,054.00 for annual renewal such insurance coverage; and

**WHEREAS**, funds for such purpose were budgeted in the Fiscal Year 2015-2016 budget, and will be paid July 1, 2015; and

**WHEREAS**, the Board of Aldermen find it is in the best interest of the citizens of the City of Riverside to authorize acquisition and renewal of such insurance coverage and approve the payment to Midwest Public Risk for workers compensation insurance coverage for the City of Riverside, in an amount not to exceed \$159,054.00.

**NOW THEREFORE, BE IT RESOLVED BY THE BOARD OF ALDERMEN OF THE CITY OF RIVERSIDE, MISSOURI, AS FOLLOWS:**

**THAT**, the acquisition and renewal of such insurance coverage and payment to Midwest Public Risk for workers compensation insurance coverage for the City of Riverside, in an amount not to exceed \$159,054.00 is hereby authorized and approved; and

**FURTHER THAT** the Mayor, City Administrator, or either of their designees, are hereby authorized to execute all documents necessary or incidental to this transaction and the City Clerk is authorized to attest thereto.

**PASSED AND ADOPTED** by the Board of Aldermen and **APPROVED** by the Mayor of the City of Riverside, Missouri, the 16th day of June, 2015.

---

Mayor Kathleen L. Rose

ATTEST:

---

Robin Littrell, City Clerk

**MINUTES  
REGULAR MEETING  
PLANNING AND ZONING COMMISSION  
RIVERSIDE, MISSOURI**

Thursday, May 15, 2015  
6:30 p.m.

The Planning and Zoning Commission for the City of Riverside, Missouri, met in regular session at Riverside City Hall, 2950 NW Vivion Road, Riverside, Missouri.

The meeting was called to order at 6:30 p.m. Answering roll call were Ray Uhl, Harold Snoderley, Stephen King, Mike Lombardo, Steven Kaspar and Al Bowman. Also present: City Planner Jackie Carlson, Fire Marshall Keith Payne and Community Development Assistant Sarah Wagner. Members absent were Mike Soler, Jim Frakes, and Mayor Kathy Rose.

- |   |  |
|---|--|
| Election of Chairman                    | Commissioner Snoderley nominated Commission Stephen King as the new Chairman of the Planning Commission, seconded by Commissioner Kaspar.<br>Motion passed 6-0   |
| Election of Vic-Chairman                | Commissioner King nominated Commissioner Mike Lombardo as the Vice-Chairman of the Planning Commission, seconded by Commissioner Uhl.<br>Motion passed 6-0   |
| Approval of Minutes of April 9, 2015.   | Commissioner Snoderley moved to approve the minutes of April 9, 2015, seconded by Commissioner Uhl.<br>Motion passed 6-0.  |
| Public Hearing- SUP 2709 NW Platte Road | Chair King opened the public hearing at 6:33 p.m.<br><br>City Planner Jackie Carlson gave an overview of the request for a special use permit to allow for outdoor storage associated with a construction business located at 2709 NW Platte Road<br><br>The commissioners discussed the sign and the applicant was present to answer questions.<br><br>Chair Bowman closed the public hearing at 6:44 p.m.<br><br>Commissioner Uhl moved to recommend approval of the modifications to the Special Use Permit at 2806 NW Vivion Road. She explained that the applicant has a construction company at that location and he is requesting to be able to store a |

skid steer, a conex toolbox, and miscellaneous construction lumber in the 30' x 84' fenced area behind the building. Carlson explained that this property is located in the C-1 Commercial Zoning District and outdoor storage is allowed with the approval of a special use permit.

The applicant answered questions from the Commission and they discussed the applicant adding mesh screening or slats to the fence to help screen the items being stored as well as the applicant removing the barbed wire at the top of the fence. The applicant was in agreement.

Chair King closed the public hearing at 7:04 p.m.

Commissioner Snoderley moved to recommend approval of the special use permit for outdoor storage of construction material for Sterling Construction at 2709 NW Platte Road to the Board of Alderman with the following conditions:

1. The applicant removed the barbed wire on the fence
2. The applicant install some sort of screening, either mesh or slats.
3. The application be reviewed in 90 days for code compliance.

Commissioner, Lombardo seconded.

Motion passed 6-0.

Public Hearing-SUP 4102  
NW Riverside Street

Chair King opened the public hearing at 7:05p.m.

Planner Jackie Carlson gave a staff report and explained that we have another request for a special use permit for outdoor storage at 4102 NW Riverside Street. This property is slightly different from the other request as it is located in an Industrial Zoned District and is completely screened from all major roadways. The applicant, JC Ehrlich, is requesting to store a trailer and generator in an existing 15'x60' fenced in area. They do plan to extend that area by 10' making it 15'x70' to better accommodate their equipment.

The applicant was in the audience and answered questions from the Commission. The barbed wire on the top of the fence was discussed and the Commission agreed to allow the applicant to keep it as a theft deterrent.

Chair King closed the public hearing at 7:12p.m.

Commissioner Snoderley moved to recommend approval of the

special use permit for outdoor storage for a trailer and generator for JC Ehrlich at 4102 NW Riverside Street. Commissioner Uhl seconded.

Motion passed 6-0.

Adjourn

Commissioner Kaspar moved to adjourn at 7:16 p.m.

Commissioner Uhl seconded and the meeting was adjourn 6-0.

---

Sarah Wagner  
Community Development



**City of Riverside**  
**Staff Analysis Report**  
Case Number PC15-10, Special Use Permit  
2709 NW Platte Road

---

**General Information**

**Applicant:** Sterling Construction

**Location:** 2709 NW Platte Road

**Requested Action:** To consider a Special Use Permit (SUP) to allow outdoor storage

**Zoning:** C-1 Commercial

**Existing Land Use:** Office location for Sterling Construction

**Proposed Land Use:** Continued office for Sterling Construction with related outdoor storage

**Procedure:** In accordance with Section 400.580 of the Unified Development Ordinance (UDO), a special use permit is required for outdoor storage. Therefore, the procedure for a special use permit is a public hearing before the Planning Commission and the Board of Aldermen after notification has been given in a paper of general circulation at least 15 days before the hearing date and property owners within 185' of the subject property have been notified of such hearing. These requirements have been fulfilled on this application.

**Project Description**

The applicant, Sterling Construction, has applied for a Special Use Permit pursuant to Chapter 400.580 of the Riverside Municipal Code to allow outdoor storage of construction materials and equipment. The applicant is a construction company that has been officing out of this location since December of 2014. They are requesting to store material and equipment that is associated with their business in the existing 30' x 84' fenced in area behind the building. The applicant has stated that they will be storing a skid steer, metal connex tool shed, and miscellaneous lumber. Most of these items will come and go as they are needed on various jobsites. At this time the applicant is already storing the metal connex took shed, some concrete blankets and metal tie rods.

**Analysis**

The UDO provides specific criteria for outdoor storage (Section 400.580) and the review of special use permits. Following are the relevant criteria.

1. *Special Use Permit: Outdoor storage shall only be permitted after approval of a special use permit.* The applicant is already storing equipment and material without having approval of the special use permit.
2. *Screening: Outdoor storage shall be contained within a fenced open yard adequately screened.* The outdoor storage is located in a 6 foot chain link fenced in area behind the building and is mostly screened from view by the building and there is limited visibility from Riverway. The applicant has proposed no additional screening at this time.



3. *Location: Outdoor storage shall be located in either a side or rear yard.* The outdoor storage is located in the rear of the building.
4. *Appearance: Outdoor storage shall have a neat and orderly appearance.* Code enforcement will have to regularly monitor the outdoor storage to ensure a neat and orderly appearance.
5. *Setback: All setback requirements (front - 5 feet, side - 5 feet, rear - 20 feet) shall be observed.* The application complies with all setbacks.
6. *Height: The height of materials shall not exceed the height limitation (45 feet) of the zoning district.* The application complies with this regulation.
7. *Parking Surfaces. Off-street parking and loading areas shall be hard surfaced.* The proposed area of storage consists of older broken asphalt. Adequate hard surface parking is available at this location.
8. *Consistence with the Comprehensive Master Plan.* A goal identified in the Comprehensive Master Plan is improving the appearance of the City. Given the site's location in a commercial setting with visibility from major thoroughfares, staff feels that this use is not compatible with the commercial nature and appearance that the Master Plan has identified for this area and the investment the City has made to acquire and demo properties. If the Commission chooses to approve this request staff would recommend that a condition of the approval be that the barbed wire along the top of the fence be removed and a specific timeframe be placed on this SUP.

**AN ORDINANCE GRANTING A SPECIAL USE PERMIT SUBJECT TO CERTAIN CONDITIONS TO STERLING CONSTRUCTION FOR OUTDOOR STORAGE IN THE COMMERCIAL (C-1) DISTRICT ON PROPERTY LOCATED AT 2709 NW PLATTE ROAD.**

**WHEREAS**, pursuant to City Code Chapter 400, Section 400.580 of the Unified Development Ordinance, application no. PC15-10, submitted by Sterling Construction requesting a Special Use Permit to allow outdoor storage of construction equipment and materials associated with their business in the Commercial (C-1) District on land owned by Bernie L. Volgamott located at 2709 NW Platte Road was referred to the Planning Commission to hold a public hearing; and

**WHEREAS**, after due public notice in the manner prescribed by law, the Planning Commission held a public hearing on May 14, 2015 and rendered a report to the Board of Aldermen containing findings of fact and a recommendation that the Special Use Permit be approved; and

**WHEREAS**, after due public notice in the manner prescribed by law, the Board of Aldermen held a public hearing on May 19, 2015 and, based upon all of the information presented, find it is in the best interest of the citizens of the City of Riverside to grant said Special Use Permit subject to certain terms and conditions as set forth herein;

**NOW THEREFORE, BE IT ORDAINED BY THE BOARD OF ALDERMEN OF THE CITY OF RIVERSIDE, MISSOURI, AS FOLLOWS:**

**SECTION 1 – GRANT OF SPECIAL USE PERMIT.** That a Special Use Permit is hereby granted to Sterling Construction to allow outdoor storage of construction equipment and materials associated with their business on property located at 2709 NW Platte Road in the Commercial (C-1) District, subject to the conditions set forth in Section 2.

**SECTION 2 – CONDITIONS OF APPROVAL AND OPERATION.** That the following conditions of approval shall apply and be followed for the duration of the Special Use Permit.

- a. The outdoor storage shall only be permitted on the property described above and may not be moved to a different location or expanded without first obtaining approval in accordance with the provisions for special use permits as specified in City Code.
- b. All materials being stored shall be associated with the business located at 2709 NW Platte Road and include only skid steer, conex tool box, and miscellaneous lumber.
- c. The outdoor storage area shall be located on the back side of the building only and be contained within the fenced area.
- d. The barbed wire shall be removed from the fencing.
- e. A black mesh or slat screening shall be installed on the fencing to screen the contents from view.

- f. The outdoor storage area shall be kept in an orderly manner.
- g. The Riverside Planning and Zoning Commission may review the Special Use Permit if the applicant has any code violations.
- h. The Special Use Permit shall be reviewed in 90 days for code compliance and shall expire after 3 years.
- i. The issuance of the Special Use Permit does not relieve the applicant from following all other applicable codes and laws of the City of Riverside or other governmental agency. This permit does not relieve the applicant from submitting necessary site plans or applying for all necessary building permits, electrical permits, sign permits, or occupation license required by City Code. The conditions set forth in this permit shall have precedence where such conditions are more restrictive than those set forth in City Code.

**SECTION 3 – FAILURE TO COMPLY.** Failure to comply with any of the conditions or provisions contained in this ordinance shall constitute a violation of both this ordinance and the City's Unified Development Ordinance and shall also be cause for revocation of the Special Use Permit granted herein in addition to other penalties which may be contained in the City Code.

**SECTION 4 – SEVERABILITY CLAUSE.** The provisions of this ordinance are severable and if any provision hereof is declared invalid, unconstitutional or unenforceable, such determination shall not affect the validity of the remainder of this ordinance.

**SECTION 5 – EFFECTIVE DATE.** This ordinance shall be in full force and effect from and after the date of its passage and approval.

**BE IT REMEMBERED** that the above was read two times by heading only, passed and approved by a majority of the Board of Aldermen and approved by the Mayor of the City of Riverside, Missouri, this \_\_\_\_ day of \_\_\_\_\_, 2015.

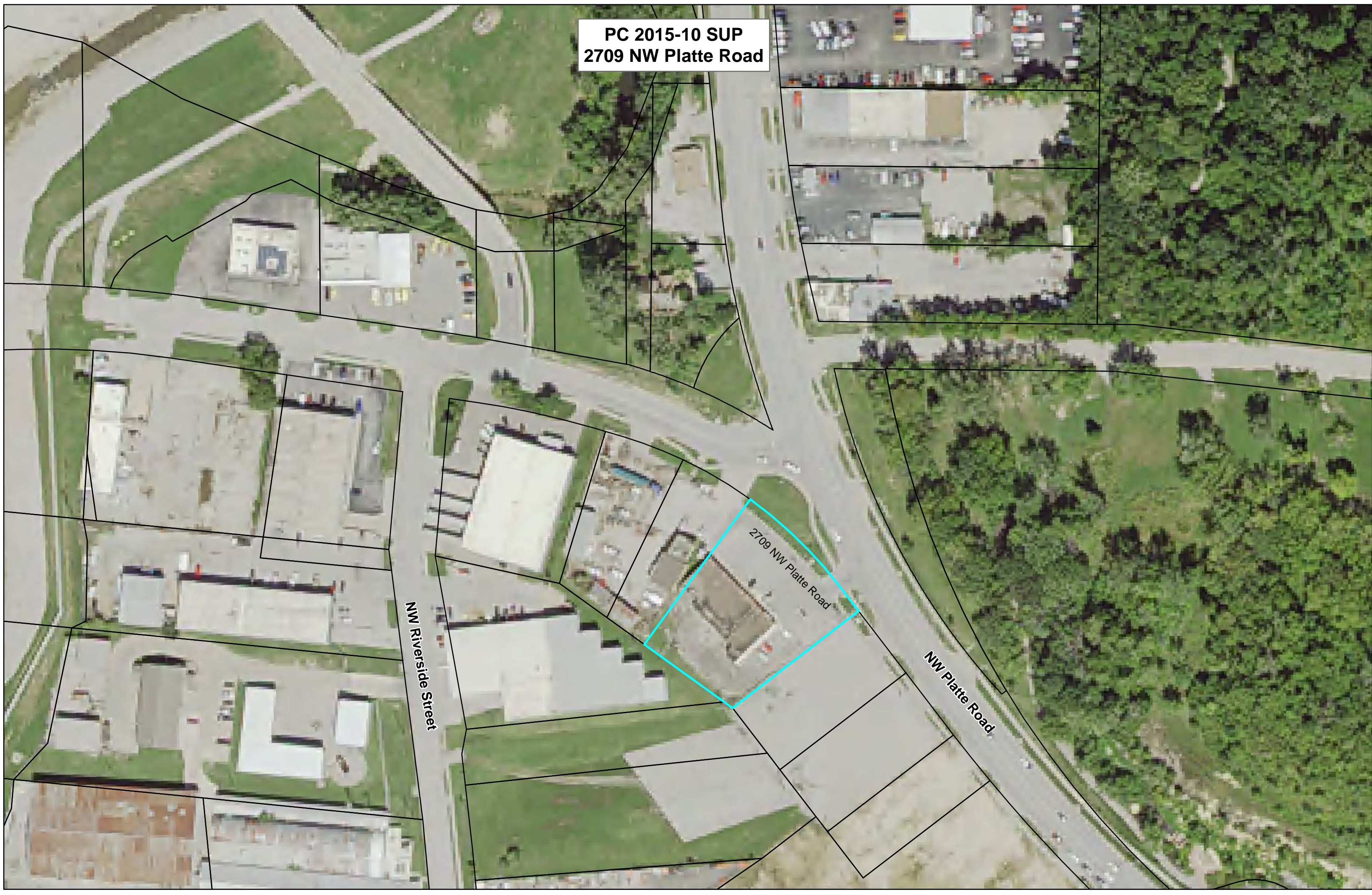
\_\_\_\_\_  
Kathleen L. Rose, Mayor

ATTEST:

\_\_\_\_\_  
Robin Littrell, City Clerk



PC 2015-10 SUP  
2709 NW Platte Road



NW Riverside Street

2709 NW Platte Road

NW Platte Road





05 12 2015 10:22





2950 NW Vivion Road  
Riverside, Missouri 64150

---

**AGENDA DATE:** 2015-06-16  
**TO:** Mayor and Board of Aldermen  
**FROM:** Stacey Rasco, Executive Assistant  
**RE:** Hiring Ordinance – Jennifer Enna

#### **Position Information**

This hire will fill two vacant part time positions. One in Engineering and one in Finance. The Administrative Assistant position is in the Skilled Experienced salary band - \$30,500.00 to \$45,700.00 with a midpoint of \$38,100.00.

#### **Hiring Recommendation**

Staff recommends approving the following hire:

Candidate: Jennifer Enna  
Open Position: Administrative Assistant  
FLSA Status: Full Time, Non-Exempt  
Starting Pay: \$32,385.00 annually

This individual has passed all required pre-employment testing and is considered to be a qualified candidate for this position.

**AN ORDINANCE AUTHORIZING THE EMPLOYMENT OF JENNIFER ENNA AS A FULL-TIME ADMINISTRATIVE ASSISTANT IN THE DEPARTMENT OF FINANCE AND ESTABLISHING A SALARY AND START DATE FOR SUCH EMPLOYEE**

**WHEREAS**, City Code Section 110.070 provides for the appointment of employees of the City by the City Administrator with approval of the Mayor and Board of Aldermen; and

**WHEREAS**, City Code Section 110.140 provides for the establishment of the salary of non-elected employees of the City by ordinance; and

**WHEREAS**, the Board of Aldermen find it is in the best interest of the City to approve the appointment of Jennifer Enna as a full-time Administrative Assistant in the Department of Finance as provided herein;

**NOW THEREFORE, BE IT ORDAINED BY THE BOARD OF ALDERMEN OF THE CITY OF RIVERSIDE, MISSOURI, AS FOLLOWS:**

**SECTION 1 – HIRING OF EMPLOYEE.** Jennifer Enna is hereby employed as a Full-Time Administrative Assistant in the Department of Finance.

**SECTION 2 – STARTING SALARY.** The starting salary for this position shall be set at \$32,385.00 per year and the employee shall be placed on a one-year work test period. The salary shall thereafter be adjusted according to the annual budget and the personnel policies and procedures of the City as may be adopted from time to time.

**SECTION 3 - REPEAL OF ORDINANCES IN CONFLICT.** All ordinances or parts of ordinances in conflict with this ordinance are hereby repealed.

**SECTION 4 – SEVERABILITY CLAUSE.** The provisions of this ordinance are severable and if any provision hereof is declared invalid, unconstitutional or unenforceable, such determination shall not affect the validity of the remainder of this ordinance.

**SECTION 5 – EFFECTIVE DATE.** This ordinance shall be in full force and effect as of July 1<sup>st</sup>, 2015.

**BE IT REMEMBERED** that the above was read two times by heading only, passed and approved by a majority of the Board of Aldermen and **APPROVED** by the Mayor of the City of Riverside, Missouri, this 16<sup>th</sup> day of June, 2015.

\_\_\_\_\_  
Kathleen L. Rose, Mayor

ATTEST:

\_\_\_\_\_  
Robin Littrell, City Clerk

	A	B	C	D	E	F	G	H	I	J	K	L	M
1	<b>Riverside Police Department</b>												
	<b>All Activities</b>												
2	<b>PATROL</b>	<b>2015</b>	<b>Reported Part I CRIMES</b>	<b>Reported Part II CRIMES</b>	<b>Traffic Citations Issued</b>	<b>DUI Arrests</b>	<b>All Other Citations Issued</b>	<b>All Other Arrests Made</b>	<b>Calls For Service</b>	<b>Self- Initiated Activities</b>	<b>Reports Written</b>	<b>POP Activities</b>	
3		Jan-2015	7	37	112	3	22	87	274	493	156	2	
4		Feb-2015	14	39	85	1	22	86	440	376	164	2	
5		Mar-2015	16	31	171	3	25	91	318	438	191	2	
6		Apr-2015	22	43	161	5	30	84	332	391	222	2	
7		May-2015	17	64	115	1	45	101	346	331	248	1	
8		Jun-2015											
9		Jul-2015											
10		Aug-2015											
11		Sep-2015											
12		Oct-2015											
13		Nov-2015											
14		Dec-2015											
15		Year Total	76	214	644	13	144	449	1,710	2,029	981	9	
16		<b>2015</b>	<b>Searches Conducted</b>		<b>Searches with Positive Results</b>								
17	<b>K-9</b>	<b>2015</b>	<b>Schools</b>	<b>Other</b>	<b>Drugs</b>	<b>People</b>	<b>Other</b>	<b>Mutual Aid</b>	<b>Self-Initiated Activities</b>	<b>Calls for Service</b>	<b>Arrests Made</b>	<b>Training Hours</b>	
18		Jan-2015	0	5	5	0	0	1	71	14	14	8	
19		Feb-2015	1	0	3	0	0	3	16	16	5	12	
20		Mar-2015	3	0	2	0	0	6	67	16	10	12	
21	K-9 Retired	Apr-2015	-	-	-	-	-	-	-	-	-	-	
22		May-2015	-	-	-	-	-	-	-	-	-	-	
23		Jun-2015	-	-	-	-	-	-	-	-	-	-	
24		Jul-2015	-	-	-	-	-	-	-	-	-	-	
25		Aug-2015											
26		Sep-2015											
27		Oct-2015											
28		Nov-2015											
29		Dec-2015											
30		Year Total	4	5	10	0	0	10	154	46	29	32	
31	<b>CRIMINAL INVESTIGATION UNIT</b>	<b>2015</b>	<b>Charges Filed</b>		<b>Cases</b>			<b>Cases Submitted to Prosecutor</b>	<b>Charges Declined</b>	<b>Cases Exceptional ly Cleared</b>	<b>Reports Written</b>		
32		<b>2015</b>	<b>Cases Received</b>	<b>Cases Assigned</b>	<b>State</b>	<b>Municipal</b>	<b>Cases Closed</b>						
33		Jan-2015	14	12	4	0	8	7	0	2	62		
34		Feb-2015	16	18	9	0	4	4	1	0	40		
35		Mar-2015	30	23	4	1	20	3	0	4	78		
36		Apr-2015	16	23	11	2	7	9	0	3	62		
37		May-2015	35	35	10	8	19	15	0	4	77		
38		Jun-2015											
39		Jul-2015											
40		Aug-2015											
41		Sep-2015											
42		Oct-2015											
43		Nov-2015											
44		Dec-2015											
45		Year Total	111	111	38	11	58	38	1	13	319		
46	<b>SCHOOL RESOURCE OFFICER</b>	<b>2015</b>	<b>Arrests</b>	<b>Reports Written</b>	<b>Classes Taught</b>	<b>External Community Relations Activities</b>	<b>POP Activities</b>						
47		Jan-2015	1	11	12	5	0						



[illegible]

[illegible]

---

---

**MEMORANDUM**

---

---

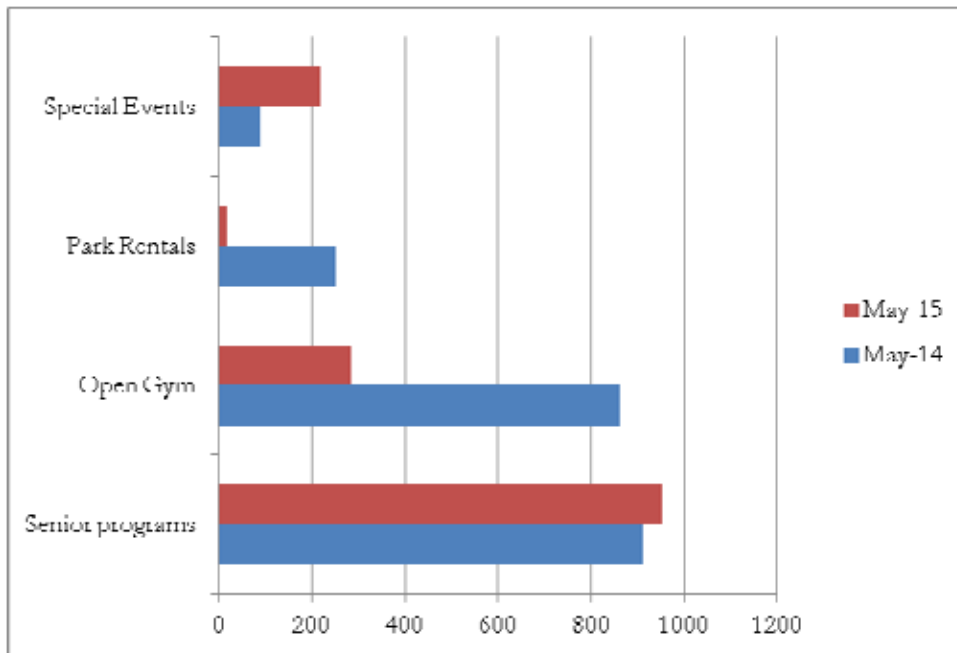
**TO:** HONORABLE MAYOR KATHY ROSE AND BOARD OF ALDERMEN  
**FROM:** LORI BOJI  
**SUBJECT:** MAY- MONTHLY REPORT  
**DATE:** JUNE 4, 2015  
**CC:**

---

The bar diagrams below shows the comparison from May 2014 to May 2015

**Recreation Division**

	<b>May 14</b>	<b>MAY 15</b>
Senior programs	912	954
Open Gym	863	283
CC/Park Rentals	252	17
Special Events	90	165







# Riverside, Missouri Fire Department

## May 2015 Monthly Activities

Monthly							Fire Safety Inspections		
Structure Fires	EMS Calls	Other Calls For Service	Motor Vehicle Accidents	Mutual Aid Requests	Training Hours	Public Relation	Number Conducted	Violations Noted	Violations Cleared
1	63	28	2	1	419	7	37	28	0
Year Totals									
5	360	102	24	18	2378	26	196	116	88

The Fire Department average response time to calls for May was 4 mins 03 secs.

Mutual Aid requests we responded to 1 aid requests and we requested aid 0 time.

Respectively submitted,

Gordon Fowlston  
Fire Chief

# Riverside Public Works

Reporting Dates 05/01/2015 06/30/2015

## Cost Summary By Task

Task	Activities	Labor Hours	Labor Cost	Eqp Cost	Mat Cost	Con Cost	Overhead	Total Cost
	2	2.00	\$30.00	\$0.00	\$43.99	\$0.00	\$0.00	\$73.99
Alderman Chamber Mtg	2	4.00	\$60.00	\$49.00	\$0.00	\$0.00	\$0.00	\$109.00
Animal Pickup/Cleanup Road Kill	3	2.50	\$46.88	\$22.00	\$0.00	\$0.00	\$0.00	\$68.88
Building Maintenance	15	26.50	\$397.50	\$470.00	\$0.00	\$0.00	\$0.00	\$867.50
Comp Time Leave	6	17.25	\$258.75	\$0.00	\$0.00	\$0.00	\$0.00	\$258.75
Data Entry	16	65.50	\$982.50	\$0.00	\$0.00	\$0.00	\$0.00	\$982.50
Debris cleanup at Public Works -	1	1.00	\$15.00	\$36.00	\$0.00	\$0.00	\$0.00	\$51.00
Delivery of paper work	4	3.25	\$48.75	\$39.25	\$0.00	\$0.00	\$0.00	\$88.00
Director Duties	26	152.50	\$2,287.50	\$22.50	\$0.00	\$0.00	\$0.00	\$2,310.00
Doctor Visit	6	11.50	\$172.50	\$0.00	\$0.00	\$0.00	\$0.00	\$172.50
Electrical	3	12.50	\$187.50	\$281.00	\$0.00	\$0.00	\$0.00	\$468.50
Equip Maint	28	81.00	\$1,215.00	\$685.25	\$368.53	\$0.00	\$0.00	\$2,268.78
Equip. Maint.	1	4.80	\$561.60	\$0.00	\$471.52	\$0.00	\$0.00	\$1,033.12
Flag raising and lowering	3	2.00	\$30.00	\$11.00	\$0.00	\$0.00	\$0.00	\$41.00
Fleet Maint	1	3.00	\$45.00	\$0.00	\$0.00	\$0.00	\$0.00	\$45.00
Flood Cleanup	2	2.00	\$30.00	\$34.50	\$0.00	\$0.00	\$0.00	\$64.50
Flood Control	6	13.00	\$195.00	\$329.50	\$0.00	\$0.00	\$0.00	\$524.50
Garage Door Maint.	3	2.00	\$30.00	\$29.50	\$0.00	\$412.00	\$0.00	\$471.50
Grounds Maint.	14	38.50	\$577.50	\$647.00	\$347.89	\$0.00	\$0.00	\$1,572.39
Holiday	1	56.00	\$840.00	\$0.00	\$0.00	\$0.00	\$0.00	\$840.00
HVAC in house maintenance	6	11.00	\$165.00	\$159.50	\$0.00	\$0.00	\$0.00	\$324.50
Injury - Work related	2	16.00	\$240.00	\$0.00	\$0.00	\$0.00	\$0.00	\$240.00
Irrigation check and fix	3	10.00	\$150.00	\$90.50	\$0.00	\$0.00	\$0.00	\$240.50
Meeting	27	49.00	\$735.00	\$482.50	\$0.00	\$0.00	\$0.00	\$1,217.50
Misc Maint	2	5.50	\$82.50	\$285.00	\$0.00	\$0.00	\$0.00	\$367.50
Mowing	108	398.00	\$5,970.00	\$12,492.45	\$0.00	\$0.00	\$0.00	\$18,462.45
Mulching	5	30.00	\$450.00	\$731.00	\$859.50	\$0.00	\$0.00	\$2,040.50
Office Public Works	9	39.50	\$592.50	\$0.00	\$0.00	\$0.00	\$0.00	\$592.50
Parks Grounds Maint	3	1.50	\$22.50	\$11.00	\$0.00	\$0.00	\$0.00	\$33.50
Parts lookup	3	9.00	\$135.00	\$0.00	\$0.00	\$0.00	\$0.00	\$135.00
Parts Run	24	36.50	\$547.50	\$626.50	\$27.24	\$0.00	\$0.00	\$1,201.24
Plumbing Maintenance	1	1.50	\$22.50	\$40.50	\$0.00	\$0.00	\$0.00	\$63.00
Pool Maintenance	33	130.50	\$1,957.50	\$1,914.25	\$42.55	\$0.00	\$0.00	\$3,914.30
Power Wash	1	10.00	\$150.00	\$140.00	\$0.00	\$0.00	\$0.00	\$290.00
Right of Way Maint.	6	10.50	\$157.50	\$146.50	\$0.00	\$0.00	\$0.00	\$304.00
Sandbagging	1	1.00	\$15.00	\$22.00	\$0.00	\$0.00	\$0.00	\$37.00
Schedule Manpower/Directions	9	9.50	\$142.50	\$87.00	\$0.00	\$0.00	\$0.00	\$229.50
Shop Maint	7	20.50	\$307.50	\$0.00	\$0.00	\$0.00	\$0.00	\$307.50
Sick	8	62.75	\$941.25	\$0.00	\$0.00	\$0.00	\$0.00	\$941.25
Stock Supplies for Custodians	3	6.00	\$90.00	\$7.00	\$0.00	\$0.00	\$0.00	\$97.00
Storm Cleanup	4	20.50	\$307.50	\$640.00	\$0.00	\$0.00	\$0.00	\$947.50
Storm Sewers / Insp	2	1.00	\$15.00	\$0.00	\$0.00	\$0.00	\$0.00	\$15.00
Street Signs / Maint	7	8.50	\$136.88	\$139.50	\$153.01	\$0.00	\$0.00	\$429.39
Street Sweeping	7	39.50	\$592.50	\$3,797.50	\$0.00	\$0.00	\$0.00	\$4,390.00
Traffic Control	1	1.00	\$33.75	\$22.00	\$0.00	\$0.00	\$0.00	\$55.75
Traffic counters	3	11.00	\$165.00	\$128.50	\$0.00	\$0.00	\$0.00	\$293.50
Trail Maint	26	31.00	\$465.00	\$725.00	\$0.00	\$0.00	\$0.00	\$1,190.00
Trail Safety Inspection	1	2.00	\$30.00	\$30.00	\$0.00	\$0.00	\$0.00	\$60.00
Trash Pick Up	12	38.00	\$570.00	\$407.00	\$0.00	\$0.00	\$0.00	\$977.00
Tree Trimming	7	13.00	\$195.00	\$223.50	\$0.00	\$0.00	\$0.00	\$418.50
Vacation	9	72.00	\$1,080.00	\$0.00	\$0.00	\$0.00	\$0.00	\$1,080.00
Vandalism/Theft Work	1	2.00	\$30.00	\$34.00	\$49.50	\$0.00	\$0.00	\$113.50
Water feature maint	29	109.75	\$1,646.25	\$2,731.00	\$3,110.01	\$0.00	\$0.00	\$7,487.26
Weed Spraying	1	1.50	\$22.50	\$67.50	\$84.95	\$0.00	\$0.00	\$174.95
Workmans Comp	4	32.00	\$480.00	\$0.00	\$0.00	\$0.00	\$0.00	\$480.00

# Riverside Public Works

## Cost Summary By Task

Reporting Dates 05/01/2015 06/30/2015

Task		Activities	Labor Hours	Labor Cost	Eqp Cost	Mat Cost	Con Cost	Overhead	Total Cost
Tasks:	54	518	1,741.80		\$28,837.70		\$412.00		\$61,462.49
				\$26,654.10		\$5,558.69		\$0.00	



2950 NW Vivion Road  
Riverside, Missouri 64150

---

**MEMO DATE:** June 12, 2015  
**AGENDA DATE:** June 16, 2015  
**TO:** Mayor and Board of Aldermen  
**FROM:** Mike Duffy  
**RE:** Community Development Department Activity May 2015

**CODES:** Violations Observed: 28  
Violations Resolved: 30  
Notices Sent: 7  
Signs Removed: 29  
Citations Issued: 2

**PERMITS:** Building Residential- 6  
Building Commercial-0  
Electrical-4  
Right-of-Way-6  
Plumbin-1  
Sign- 2  
Fence -1  
Total-20

**Animal Control:** Animal Complaints: 24  
Self Initiated Calls: 27  
Animals Returned to Owner: 0  
Impounded Domestic Animals: 2  
Impounded Wild Animals: 6  
Verbal Warnings: 1

**P&Z ACTIVITY:** Special Use Permit- 2709 NW Platte Road (Outdoor Storage)  
Special Use Permit-4012 NW Riverside Street (Outdoor Storage)