



*Upstream from ordinary.*

**BOARD OF ALDERMEN MEETING**

RIVERSIDE CITY HALL  
2950 NW VIVION ROAD  
RIVERSIDE, MISSOURI 64150  
**TENTATIVE AGENDA**  
**DECEMBER 20, 2016**

**Closed Session – 6:00 p.m.**  
**Regular Meeting - 7:00 p.m.**

Call to Order  
Roll Call

**CLOSED SESSION**  
**(6:00 p.m.)**

**1. Motion to enter into CLOSED SESSION for the following matters:**

610.021(1) Legal actions, causes of action or litigation involving a public governmental body and any confidential or privileged communications between a public governmental body or its representatives and its attorneys

610.021 (2) Leasing, purchase or sale of real estate by a public governmental body where public knowledge of the transaction might adversely affect the legal consideration therefore

610.021(3) Hiring, firing, disciplining or promoting a particular employee, when personal information about the employee is discussed

610.021(12) Sealed bids and related documents, until the bids are opened; and sealed proposals and related documents or any documents related to a negotiated contract until a contract is executed, or all proposals are rejected

**REGULAR SESSION**  
**(7:00 p.m.)**

Call to Order  
Roll Call  
Pledge of Allegiance

**Public Comments** - Members of the public may address exclusively the Mayor and members of the Board of Aldermen during Public Comments ONLY. This Public Comments time is reserved for citizen comments regarding agenda and non-agenda items. However, any item not listed on the agenda will be taken under advisement. Public comment on any agenda item which has a Public Hearing should be reserved until the Public Hearing is opened and comments on such item will be taken at that time. Each speaker is limited to 5 minutes.

**Presentation – Auditors Report**

## LEGISLATIVE SESSION

### 1. **CONSENT AGENDA**

All matters listed under the Consent Agenda are considered to be routine by the Board of Aldermen and will be enacted by one motion to approve the Consent Agenda as presented. There is no separate discussion of these items. The Mayor or a member of the Board of Aldermen may request that any item be removed from the Consent Agenda for discussion or explanation. If removed, it will be considered separately following approval of the remaining items on the Consent Agenda. No motion is required to remove an item from the Consent Agenda.

Approval of minutes for December 6, 2016.

Approval of Court Report November 2016.

**R-2016-073: A RESOLUTION AUTHORIZING THE PURCHASE OF AUTO AND LIABILITY INSURANCE FROM THE MISSOURI PUBLIC ENTITY RISK MANAGEMENT FUND INSURANCE COMPANY FOR THE ANNUAL PREMIUM RENEWAL IN AN AMOUNT NOT TO EXCEED \$92,223.00.** Point of Contact: City Administrator Greg Mills.

### REGULAR AGENDA

1. **Public Hearing:** Public hearing regarding the following tax increment financing plans: L-385 Levee Redevelopment Plan and the Gateway Redevelopment Plan. This hearing is held pursuant to Section 99.865.3 RSMo, the purpose of which is to determine if the redevelopment project is making satisfactory progress under the proposed time schedule contained within the approved plans for completion of such projects, in the City of Riverside, Missouri.
2. First Reading: Bill No. 2016-059: **AN ORDINANCE APPROVING A MEMORANDUM OF UNDERSTANDING WITH THE PLATTE COUNTY HEALTH DEPARTMENT.** Point of Contact: Mike Shelton, Emergency Management.
3. First Reading: Bill No. 2016-060: **AN ORDINANCE APPROVING THE FINAL PLAT OF THE REPLAT OF RIVERSIDE HORIZONS INDUSTRIAL VI EAST, A REPLAT OF ALL OF LOT 1, RIVERSIDE HORIZONS INDUSTRIAL VI EAST, A SUBDIVISION IN THE CITY OF RIVERSIDE, PLATTE COUNTY, MISSOURI, ALONG WITH THE VACATED PORTION OF DOMAIN STREET, ALL IN THE CITY OF RIVERSIDE, PLATTE COUNTY, MISSOURI.** Point of Contact: Community Development Director Mike Duffy.
4. First Reading: Bill No. 2016-061: **AN ORDINANCE AUTHORIZING AND APPROVING A CONTRACT FOR TRANSIT SERVICE BY AND BETWEEN THE KANSAS CITY AREA TRANSPORTATION AUTHORITY AND THE CITY OF RIVERSIDE, MISSOURI IN AN AMOUNT NOT TO EXCEED \$14,997.00.** Point of Contact: City Administrator Greg Mills.
5. **R-2016-074: A RESOLUTION AUTHORIZING THE EXPENDITURE OF FUNDS OUT OF THE CITY TREASURY OF THE CITY OF RIVERSIDE FOR FISCAL YEAR 2016-2017 WEEK ENDING DECEMBER 9<sup>TH</sup> AND DECEMBER 16<sup>TH</sup> IN THE AMOUNT OF \$2,007,795.23.** Point of Contact: Finance Director Donna Oliver.
6. **R-2016-075: A RESOLUTION APPROVING AN AGREEMENT BETWEEN THE CITY AND WILLIAMS SPURGEON KUHLMANN & FRESHNOCK ARCHITECTS, INC. FOR PUBLIC SAFETY SPACE NEEDS/FACILITY STUDY.** Point of Contact: Fire Chief Gordon Fowlston.

**7. Communication from City Administrator**

A. FYI - April 4, 2017 Municipal Election filings began Tuesday, December 13<sup>th</sup> and will close on January 17<sup>th</sup>. Filed to date: Ward I – Al Bowman, Ward II- Aaron Thatcher, and Ward III – Frank Biondo.

B. Tourism Quarterly Update

**a) Department Reports**

- i. Community Development
- ii. Engineering  
- Riverway Street Light Discussion
- iii. Finance
- iv. Public Safety
- v. Public Works
- vi. Levee Board Report

**8. Communication from Mayor**

**9. Communication from Board of Aldermen**

**10. Motion to Adjourn**

  
\_\_\_\_\_  
Michael Duffy, Community Development Director

**ATTEST:**

  
\_\_\_\_\_  
Robin Kincaid, City Clerk

Posted 12/16/16 at 2:00 p.m.

MINUTES  
REGULAR MEETING  
BOARD OF ALDERMEN  
RIVERSIDE, MISSOURI  
Tuesday, December 6, 2016  
6:45 p.m.

The Board of Aldermen for the City of Riverside, Missouri, met in regular session in the Board of Aldermen Chambers at City Hall, 2950 NW Vivion Road, Riverside, Missouri, on Tuesday, December 6, 2016.

Mayor Rose called the regular meeting to order at 6:45 p.m. Those in attendance were Mayor Kathy Rose, Aldermen Ron Super, Art Homer, Frank Biondo, Aaron Thatcher, Chet Pruett, and Al Bowman.

Also present were City Administrator Greg Mills, Community Development Director Mike Duffy, City Clerk Robin Kincaid, Public Works Director Tom Wooddell, and City Engineer Travis Hoover. Also present was City Attorney Paul Campo.

<b>MOTION TO ENTER INTO CLOSED @ 6:45 P.M.</b>	Alderman Homer moved that the meeting go into closed session pursuant to RSMo 610.021 (1) Legal Action and litigation, and RSMo 610.021 (2) Leasing, Purchase or sale of real estate, second by Alderman Thatcher. Yes: Homer, Thatcher, Super, Biondo, Bowman, and Pruett. Motion carried 6-0.
--	---

<b>MOTION TO ADJOURN CLOSED @ 6:53 P.M.</b>	Alderman Biondo moved at 6:53 p.m. to adjourn closed session with action taken, second by Alderman Homer. Yes: Biondo, Homer, Pruett, Bowman, Super, and Thatcher. Motion carried 6-0.
---	--

<b>REGULAR SESSION</b>	Mayor Rose called the Regular Session Meeting to order at 7:00 p.m.
------------------------	---

Those in attendance were Mayor Kathy Rose, Aldermen Ron Super, Art Homer, Frank Biondo, Chet Pruett, Aaron Thatcher, and Al Bowman.

Also present were City Administrator Greg Mills, Community Development Director Mike Duffy, City Clerk Robin Kincaid, Public Works Director Tom Wooddell, City Engineer Travis Hoover, and Major Chris Skinrood. Also present was City Attorney Paul Campo.

<b>PLEDGE OF ALLEGIANCE</b>	Mayor Rose led the Pledge of Allegiance.
-----------------------------	--

<b>PUBLIC COMMENT</b>	None.
-----------------------	-------

<b>CONSENT AGENDA</b>	Alderman Biondo moved to approve the consent agenda as presented, second by Alderman Bowman. Yes: Biondo, Bowman, Pruett, Homer, Thatcher, and Super. Motion carried 6-0.
-----------------------	---

**MINUTES OF 11-15-16**

Alderman Biondo moved to approve the minutes of the November 15, 2016 meeting, second by Alderman Bowman.  
Yes: Biondo, Bowman, Pruett, Homer, Super, and Thatcher.  
Motion carried 6-0.

**RESOLUTION 2016-072**

Bill Pay

Alderman Biondo moved to approve Resolution 2016-072 authorizing the expenditure of funds for fiscal year 2016-2017, for weeks ending November 18<sup>th</sup>, November 25<sup>th</sup> and December 2<sup>nd</sup> in the amount of \$343,440.24, second by Alderman Bowman.  
Yes: Biondo, Bowman, Pruett, Homer, Thatcher, and Super.  
Motion carried 6-0.

**REGULAR AGENDA****PUBLIC HEARING – L385**

and Gateway Redevelopment

Mayor Rose asked for a motion to continue the published public hearing until the next regular meeting. Alderman Thatcher moved to continue the public hearing regarding the tax increment financing plans L-385 Levee Redevelopment Plan and the Gateway Redevelopment Plan to the next regular meeting on December 20, 2016, second by Alderman Biondo.  
Yes: Thatcher, Biondo, Super, Bowman, Homer, and Pruett.  
Motion carried 6-0

**BILL NO. 2016-056**

Amend Replat Northwood Acres

City Clerk Robin Kincaid gave first reading of Bill No. 2016-056. Community Development Director Mike Duffy explained the amendment to the plat with this bill.  
Alderman Pruett moved to accept first reading and place Bill No. 2016-056 on second and final reading, second by Alderman Biondo.  
Yes: Pruett, Biondo, Thatcher, Bowman, Homer, and Super.  
Motion carried 6-0.  
Alderman Biondo moved to approve Bill 2016-056 and enact said bill as ordinance, second by Alderman Pruett.  
Yes: Biondo, Pruett, Super, Homer, Bowman, and Thatcher.  
Motion carried 6-0.

**BILL NO. 2016-057**

Amend Code 228

City Clerk Robin Kincaid gave first reading of Bill No. 2016-057. Major Chris Skinrood explained the need for this amendment to section 228 of the City Code.  
Alderman Thatcher moved to accept first reading and place Bill No. 2016-057 on second and final reading, second by Alderman Homer.  
Yes: Thatcher, Homer, Biondo, Super, Pruett, and Bowman.  
Motion carried 6-0.  
Alderman Pruett moved to approve Bill 2016-057 and enact said bill as ordinance, second by Alderman Biondo.  
Yes: Pruett, Biondo, Bowman, Homer, Super, and Thatcher.  
Motion carried 6-0.

**BILL NO. 2016-058**

Amend Code 210 Offenses

City Clerk Robin Kincaid gave first reading of Bill No. 2016-058. City Attorney Paul Campo explained a few of the changes to the Offenses Chapter 210 in the City Code book that will be effective on January 1, 2017.

Alderman Thatcher moved to accept first reading and place Bill No. 2016-058 on second and final reading, second by Alderman Pruett.

Yes: Thatcher, Pruett, Homer, Super, Bowman, and Biondo.  
Motion carried 6-0.

Alderman Pruett moved to approve Bill 2016-058 and enact said bill as ordinance, second by Alderman Biondo.

Yes: Pruett, Biondo, Thatcher, Homer, Super, and Bowman.  
Motion carried 6-0.

**CITY ADMINISTRATOR**

City Administrator Greg Mills announced that April 4, 2017 Municipal Election filing begins on Tuesday, December 13<sup>th</sup>.

**COMMUNITY DEVELOPMENT**

Community Development Director Mike Duffy requested approval by the Board for a maximum expenditure of \$3,500 from the On Call Engineering Services Account for Cook, Flatt & Strobel Engineers to evaluate access to the Rinker and Varker site.

Alderman Thatcher moved to approve an expenditure of not more than \$3,500 from the On Call Engineering Services Account, directing staff to work with Cook, Flatt, and Strobel on a study and evaluation of access to the Rinker and Varker properties, second by Alderman Biondo.

Yes: Thatcher, Biondo, Bowman, Super, Homer, and Pruett.  
Motion carried 6-0.

**ENGINEERING**

Nothing to report.

**FINANCE**

Nothing to report.

**PUBLIC SAFETY**

Nothing to report.

**PUBLIC WORKS**

Nothing to report.

**LEVEE BOARD**

Alderman Super stated that the Levee District has made the decision not to go further with the refunding of bonds at this time.

**MAYOR'S DISCUSSION**

Mayor Rose reported that her trip to Pittsburgh, Pennsylvania for the Annual National League of Cities was very interesting and nice. They have a beautiful and vibrant downtown. I attended the Missouri American Water groundbreaking for the new water plant and it is now a \$32 million plant. Friday we will be attending the Platte County Economic Development Luncheon honoring Complete Home Concepts this year. The holiday festivities have been wonderful, the senior luncheon, tree lighting, and employee dinner. The shop with a cop will be Sunday.

**BOARD OF ALDERMEN**

Alderman Homer – Thanked staff for both parties; Sunday evening's employee dinner and today's luncheon are always nice and enjoyed very much.

Alderman Pruett – Nothing to report.

Alderman Bowman – Both dinners were great and appreciated. He spoke with a man that had not been in Riverside for quite some time and he thought the city had made many improvements.

Alderman Biondo – Sunday evening's employee dinner was excellent and I am looking forward to the shop with a cop event next Sunday.

Alderman Thatcher – Thank you for the condolences and allowing me time with my family.

Alderman Super – It was evident how appreciative the seniors were at the lunch today. I also heard many comments today that they love the new street lights.

**MOTION TO ADJOURN**

Alderman Biondo moved to adjourn the meeting at 7:31 p.m., second by Alderman Thatcher.

Yes: Biondo, Thatcher, Pruett, Homer, Bowman, and Super.  
Motions carried 6-0.

---

Robin Kincaid, City Clerk

**CITY OF RIVERSIDE  
MUNICIPAL COURT  
2950 N.W. VIVION RD  
RIVERSIDE, MISSOURI 64150**

**REPORT TO CITY CLERK  
FOR MONTH OF NOVEMBER**

I do hereby certify that this is a complete listing of the cases heard in the Municipal Division for the month of NOVEMBER, 2016.



Shayla Jones  
Court Administrator

Filed: December 15, 2016  
RSMo. 479.080.3

(Trial de novas filed: None)



Report received by City Clerk

\*Printed: 12/15/2016



# MUNICIPAL DIVISION SUMMARY REPORTING FORM

*Refer to instructions for directions and term definitions. Complete a report each month even if there has not been any court activity*

<b>I. COURT INFORMATION</b>		Contact information same as last report <input type="checkbox"/>	
Municipality: RIVERSIDE		Reporting Period: November, 2016	
Mailing Address: 2950 NW VIVION ROAD		Software Vendor: Tyler Technologies	
Physical Address: 2950 NW VIVION ROAD		County PLATTE COUNTY	Circuit: 6
Telephone Number: (816) 741-1212		Fax Number: (816) 372-9020	
Prepared By: S JONES	E-mail Address municipalcourt@riversidemo.com		iNotes <input type="checkbox"/>
Municipal Judge(s): MARK M. FERGUSON		Prosecuting Attorney: AMY ASHELFORD	

II. MONTHLY CASELOAD INFORMATION	Alcohol & Drug related Traffic	Other Traffic	Non-Traffic Ordinance
A. Cases (citations / informations) pending at start of month	177	2,741	1,463
B. Cases (citations / informations) filed	4	109	32
C. Cases (citations / informations) disposed			
1. jury trial (Springfield, Jefferson County, and St. Louis County only)	0	0	0
2. court / bench trial - GUILTY	0	0	0
3. court / bench trial - NOT GUILTY	0	0	0
4. plea of GUILTY in court	11	72	23
5. Violations Bureau Citations (i.e., written plea of guilty) and bond forfeitures by court order (as payment of fines / costs)	2	54	21
6. dismissed by court	0	0	0
7. nolle prosequi	0	21	3
8. certified for jury trial(not heard in the Municipal Division)	0	0	0
9. TOTAL CASE DISPOSITIONS	13	147	47
D. Cases (citations / informations) pending at end of month [pending caseload = (A + B) - C9]	168	2,703	1,448
E. Trial de Novo and / or appeal applications filed	0	0	0

<b>III. WARRANT INFORMATION (pre- &amp; post-disposition)</b>		<b>IV. PARKING TICKETS</b>	
1. # Issued during reporting period	138	# Issued during period	0
2. # Served/withdrawn during reporting period	73	<input checked="" type="checkbox"/> Court staff does not process parking tickets	
3. # Outstanding at end of reporting period	3,032		

Office of State Courts Administrator, Statistics, 2112 Industrial Drive, P.O. Box 104480, Jefferson City, MO 65110

OSCA Help Desk: 1-888-541-4894

Fax: 573-526-0338

E-mail: [MunicipalDivision.Reports@courts.mo.gov](mailto:MunicipalDivision.Reports@courts.mo.gov)

# MUNICIPAL DIVISION SUMMARY REPORTING FORM

<b>I. COURT INFORMATION</b>	Municipality: RIVERSIDE	Reporting Period: November, 2016
-----------------------------	-------------------------	----------------------------------

<b>V. DISBURSEMENTS</b>			
<b>Excess Revenue (minor traffic violations, subject to the excess revenue percentage limitation)</b>		<b>Other Disbursements cont.</b>	
Fines - Excess Revenue	\$ 10,615.50		\$
Clerk Fee - Excess Revenue	\$ 996.00		\$
Crime Victims Compensation (CVG) Fund surcharge - Paid to City/Excess Revenue	\$ 0.00		\$
Bond forfeitures (paid to city) - Excess Revenue	\$ 1,350.00		\$
<b>Total Excess Revenue</b>	\$ 12,961.50		\$
<b>Other Revenue (non-minor traffic and ordinance violations not subject to the excess revenue percentage limitation)</b>			\$
Fines - Other	\$ 6,745.00		\$
Clerk Fee - Other	\$ 768.00		\$
Judicial education Fund (JEF) <input type="checkbox"/> Court does not retain funds for JEF	\$ 0.00		\$
Peace Officer Standard and Training (POST) Commission surcharge	\$ 148.00		\$
Crime Victims Compensation (CVC) Fund surcharge - Paid to state	\$ 1,117.13		\$
Law Enforcement Training (LET) Fund surcharge	\$ 296.00		\$
Domestic Violence Shelter surcharge	\$ 298.00		\$
Inmate Prisoner Detainee Security Fund surcharge	\$ 296.00		\$
Sheriff's Retirement Fund (SRF) surcharge	\$ 444.00		\$
Restitution	\$ 0.00		\$
Parking ticket revenue (including penalties)	\$ 0.00		\$
Bond forfeitures (paid to city) - Other	\$ 1,250.00		\$
<b>Total Other Revenue</b>	\$ 11,362.13		\$
<b>Other Disbursements:</b> Enter below additional surcharges and/or fees not listed above. Designate if subject to the excess revenue percentage limitation. Examples include, but are not limited to, arrest costs, witness fees, and board bill/jail costs.		<b>Total Other Disbursements</b>	\$ 457.00
DUI		<b>Total Disbursements of Costs, Fees, Surcharges and Bonds Forfeited</b>	\$ 24,780.63
		<b>Bond Refunds</b>	\$ 3,594.00
		<b>Total Disbursements</b>	\$ 28,374.63

Office of State Courts Administrator, Statistics, 2112 Industrial Drive, P.O. Box 104480, Jefferson City, MO 65110

MONTHLY REPORT  
TO THE  
CITY OF RIVERSIDE, MISSOURI

December 15, 2016

I ATTEST THAT THE FOREGOING IS A TRUE AND  
FACTUAL ACCOUNTING OF COURT FOR THE MONTH OF  
**NOVEMBER, 2016.**



---

SHAYLA JONES, COURT ADMINISTRATOR

## MUNICIPAL COURT REPORT

RIVERSIDE MUNICIPAL COURT  
Report For November 1, 2016 Thru November 30, 2016Page: 1  
MOSTRPT

## Citations by Filed Date...

Total Citations	150	
Total Warnings	0	
Total Voids	0	
Total Filed Citations		150

## Citations by Issued Date...

Total Citations	117	
Total Warnings	0	
Total Voids	0	
Total Issued Citations		117

## Violations by Filed Date...

City Ordinance	17	
Traffic	109	
NON-MOVING VIOLATION	25	
Total Filed Violations		151

## Violations by Issued Date...

City Ordinance	14	
Traffic	82	
NON-MOVING VIOLATION	21	
Total Issued Violations		117

## Continued Cases...

## Multiple Continuances

City Ordinance	21	
Traffic	88	
NON-MOVING VIOLATION	22	
Total		131

## Continued Trial

City Ordinance	1	
Traffic	0	
NON-MOVING VIOLATION	0	
Total		1

Total Continued Cases 132

## Forfeit Bond...

City Ordinance	1	
Traffic	4	
NON-MOVING VIOLATION	2	
Total Bond Forfeiture		7

## MUNICIPAL COURT REPORT

RIVERSIDE MUNICIPAL COURT  
Report For November 1, 2016 Thru November 30, 2016Page: 2  
MOSTRPT

## Completed Cases...

Paid Fine...			
City Ordinance	3		
Traffic	43		
NON-MOVING VIOLATION	22		
Total Paid Fines		68	
Before Judge...			
City Ordinance	3		
Traffic	19		
NON-MOVING VIOLATION	55		
Total Before Judge		77	
Total Completed		145	

## Other Completed...

Dismissed by Prosecutor			
City Ordinance	3		
Traffic	21		
NON-MOVING VIOLATION	0		
Total		24	
FOUND GUILTY - WAIVED FEES			
City Ordinance	6		
Traffic	1		
NON-MOVING VIOLATION	0		
Total		7	
Total Other Completed		31	
Grand Total Completed		176	

## Warrants...

Issued...			
City Ordinance	28		
Traffic	88		
NON-MOVING VIOLATION	22		
Total Warrants Issued		138	
Cleared...			
City Ordinance	16		
Traffic	44		
NON-MOVING VIOLATION	13		
Total Warrants Cleared		73	
Change in Total Warrants		65	

**MUNICIPAL COURT REPORT**

**RIVERSIDE MUNICIPAL COURT**  
**Report For November 1, 2016 Thru November 30, 2016**

**Page: 3**  
**MOSTRPT**

<b>FINE FINE</b>	<b>\$17,252.50</b>
<b>CC COURT COST</b>	<b>\$1,764.00</b>
<b>CVS2 CRIME VICTIMS STATE2</b>	<b>\$1,062.37</b>
<b>CVC2 CRIME VICTIMS CITY2</b>	<b>\$54.76</b>
<b>DV DOMESTIC VIOLENCE</b>	<b>\$298.00</b>
<b>STPT STATE POLICE TRAINING FUND</b>	<b>\$148.00</b>
<b>TC TRAINING COST</b>	<b>\$296.00</b>
<b>ISF INMATE SECURITY FUND</b>	<b>\$296.00</b>
<b>SF SHERIFFS' SURCHARGE</b>	<b>\$444.00</b>
<b>FTA FAILURE TO APPEAR FEE</b>	<b>\$108.00</b>
<b>DUI DUI</b>	<b>\$457.00</b>
<b>CBF CASH BOND FORFEITURE</b>	<b>\$2,600.00</b>
<b>Total Fees/Fines Paid</b>	<b>\$24,780.63</b>

**RESOLUTION NO. R – 2016-073**

**A RESOLUTION AUTHORIZING THE PURCHASE OF AUTO AND LIABILITY INSURANCE FROM THE MISSOURI PUBLIC ENTITY RISK MANAGEMENT FUND INSURANCE COMPANY FOR THE ANNUAL PREMIUM RENEWAL IN AN AMOUNT NOT TO EXCEED \$92,223.00**

**WHEREAS**, the City of Riverside has a need for auto and liability insurance coverage on all city owned vehicles and property; and

**WHEREAS**, the City of Riverside in the adoption of its purchasing policy requires all expenditures in excess of \$10,000 to be presented to the Board of Aldermen for approval and the City's insurance carrier for auto and liability insurance has presented an invoice in the amount of \$92,223.00 for annual renewal such insurance coverage; and

**WHEREAS**, funds for such purpose were budgeted in the Fiscal Year 2016-2017 budget; and

**WHEREAS**, the Board of Aldermen find it is in the best interest of the citizens of the City of Riverside to authorize acquisition and renewal of such insurance coverage and approve the payment to Missouri Public Entity Risk Management Fund (MoPerm) for auto and liability insurance coverage for the City of Riverside, in an amount not to exceed \$92,223.00.

**NOW THEREFORE, BE IT RESOLVED BY THE BOARD OF ALDERMEN OF THE CITY OF RIVERSIDE, MISSOURI, AS FOLLOWS:**

**THAT**, the acquisition and renewal of such insurance coverage and payment to Missouri Public Entity Risk Management Fund (MoPerm) for auto and liability insurance coverage, in an amount not to exceed \$92,223.00 is hereby authorized and approved; and

**FURTHER THAT** the Mayor, City Administrator, or either of their designees, are hereby authorized to execute all documents necessary or incidental to this transaction and the City Clerk is authorized to attest thereto.

**PASSED AND ADOPTED** by the Board of Aldermen and **APPROVED** by the Mayor of the City of Riverside, Missouri, the 20<sup>th</sup> day of December, 2016.

---

Mayor Kathleen L. Rose

ATTEST:

---

Robin Kincaid, City Clerk



# INVOICE

## MISSOURI PUBLIC ENTITY RISK MANAGEMENT FUND

3425 Constitution Court, 3rd Floor  
P.O. Box 7110  
Jefferson City MO 65102  
(888) 566-7376 Fax (573) 751-8276

Date 12-1-2016	Invoice Number 130718
Account Number 1002	Policy Number LP-1002-201701

### Invoice To:

CITY OF RIVERSIDE  
2950 NW VIVION RD  
RIVERSIDE MO 64150

TERMS DUE UPON RECEIPT  
PLEASE REMIT PAYMENT TO:  
MOPERM  
3425 Constitution Court, 3rd Floor  
P.O. Box 7110  
Jefferson City MO 65102

	Description	Amount
	Auto Physical Damage (Fleet)	\$16,618.00
	Automobile Liability (Fleet)	\$13,264.00
	General Liability	\$12,993.00
	Employment Practices Liability	\$22,826.00
	Errors & Omissions Liability	\$2,098.00
	Law Enforcement Liability	\$21,384.00
	Healthcare Malpractice	\$2,240.00
	Cyber & Information Breach Coverage	\$800.00
	<b>TOTAL AMOUNT DUE</b>	<b>\$92,223.00</b>



BILL NO. 2016-059

ORDINANCE NO. \_\_\_\_\_

**AN ORDINANCE APPROVING A MEMORANDUM OF UNDERSTANDING  
WITH THE PLATTE COUNTY HEALTH DEPARTMENT**

**BE IT ORDAINED BY THE BOARD OF ALDERMEN OF THE CITY OF  
RIVERSIDE, MISSOURI AS FOLLOWS:**

**SECTION 1 – AGREEMENT APPROVED.** That the Riverside Board of Aldermen hereby approves the Memorandum of Understanding, regarding public health emergency planning, by and between the City of Riverside and the Platte County Health Department, in substantially the form attached hereto, and the Mayor is authorized to execute the Memorandum of Understanding.

**SECTION 2 – AUTHORITY GRANTED.** The Mayor, the City Administrator and other appropriate City officials are hereby authorized to take any and all actions as may be deemed necessary or convenient to carry out and comply with the intent of this Ordinance and to execute and deliver for and on behalf of the City all certificates, instruments, agreements and other documents, as may be necessary or convenient to perform all matters herein authorized.

**SECTION 3 – EFFECTIVE DATE.** This Ordinance shall be in full force and effect from and after its passage and approval.

**BE IT REMBERED** that the above was read two times by heading only, **PASSED AND APPROVED** by a majority of the Board of Aldermen and **APPROVED** by the Mayor of the City of Riverside this 20th day of December, 2016.

\_\_\_\_\_  
Mayor Kathleen L. Rose

ATTEST:

\_\_\_\_\_  
Robin Kincaid, City Clerk



## MEMORANDUM OF UNDERSTANDING

This Memorandum of Understanding (MOU) is between the Platte County Health Department (PCHD), a political subdivision of the State of Missouri, organized pursuant to Section 205-010 to 205.150 RSMo, and the City of Riverside (the City), an incorporated city in Platte County, Missouri. PCHD and the City have a strong working relationship and share a common goal to provide excellent service to residents of the City and to residents of Platte County, Missouri. Both parties agree to partner in the event of a public health emergency, which may include a naturally occurring event such as pandemic influenza, or an intentional event such as an act of bioterrorism. During a public health emergency, the City agrees to allow PCHD to use the Riverside Fire Station to operate an Open Point of Dispensing (POD) site. The purpose of a POD site is to allow rapid dispensing of vaccinations or medications to Platte County residents.

Both parties agree to the following terms as outlined below:

- I. In the event a POD site must be opened in Platte County and Riverside Fire Station is selected as the location of the POD site, the City agrees to make Riverside Fire Station available for this purpose. In return, PCHD agrees to provide prophylaxis on a priority basis to the City employees and to members of their immediate households. The distribution of any vaccine or medications, however, must be in accordance with established Centers for Disease Control and Prevention (CDC) guidelines, hence some exceptions may apply.
- II. PCHD may request the assistance of employees of the City, if available, to assist volunteers with POD operations. The employees of the City are under **NO** obligation to provide this assistance.
- III. PCHD will be responsible for:
  - a. Providing a point of contact person to answer the City's questions about the POD;
  - b. Notifying the City as soon as practicable once it has been determined that the Riverside Fire Station will be used as a POD site;
  - c. Providing training for personnel who will staff the POD;
  - d. Arranging for law enforcement support and security;
  - e. Ensuring that health and security professionals will triage at the entrance of the facility and, to the best of their ability, prevent contagious people from entering the facility;
  - f. Arranging for the placement and removal of portable restrooms;
  - g. Arranging for the removal of any and all biohazards and/or medical wastes;
  - h. Post-event clean-up;
  - i. Cost of repairs/replacements required as a result of the use of Riverside Fire Station as an Open POD site.



- IV. PCHD will provide worker's compensation insurance and liability insurance for PCHD employees assigned responsibilities under this MOU. PCHD shall be liable for any and all claims, demands, expenses, liabilities, and losses (including reasonable attorney's fees) as a result of claims or damages arising out of any acts or omissions of PCHD, its employees, agents, or contractors in connection with the performances of dispensing services consistent with this MOU.
- V. PCHD will track all expenditures during a public health emergency to include the use of utilities at Riverside Fire Station and will reimburse the City for this or any other expenses incurred during the operation of a POD site.
- VI. This MOU shall be effective when all parties have executed it, and shall remain in effect until terminated in accordance with this provision. Either party to this agreement may terminate the MOU at any time upon thirty (30) days written notice.
- VII. The City preserves all Immunities recognized by law. Nothing herein shall be construed as a waiver of Sovereign Immunity or Governmental Immunity by whatever name as set forth in Mo. Rev. Stat. § 537.600 et seq. Any insurance purchased by PCHD hereto is not intended to act as a waiver, nor is it a waiver of any defense available to the City and its employees by statute or at common law.
- VIII. **Notices:** All notices or other communications provided for by this agreement shall be made in writing and shall be deemed properly delivered:
- a. When delivered personally; or
  - b. When mailed to the party intended to receive the same, registered or certified mail, postage prepaid, at its address as follows or such other addresses as notices may be given to the other party hereto from time to time:
- If given to the City:
- Mike Shelton  
Emergency Management  
CITY OF RIVERSIDE  
2950 NW VIVION ROAD  
RIVERSIDE, MO 64150  
OFFICE: 816-741-1191  
MOBILE: 816-985-2187  
EMAIL: [mshelton@riversidemo.com](mailto:mshelton@riversidemo.com)



If given to PCHD:

MARY JO VERNON  
DIRECTOR  
PLATTE COUNTY HEALTH DEPARTMENT  
212 MARSHALL ROAD  
PLATTE CITY, MO 64079  
OFFICE: 816-858-2412  
MOBILE: 816-728-8194  
EMAIL: [maryjo.vernon@plattehealth.com](mailto:maryjo.vernon@plattehealth.com)

If sent by mail, any notice, delivery or other communication shall be treated as effective 72 hours after it was deposited in the United States Mail, certified and postage prepaid, return receipt requested, in a regularly maintained receptacle for the deposit of mail, addressed and set forth above.

If personally delivered or sent by telecopy or any form of telegraphic communication, or special courier, any notice, delivery or other communication shall be treated as being effective or having been given at any time personally delivered or 12 hours after it has been telecopied or wired.

- IX. **Amendments:** No supplement, modification or amendments of this agreement shall be binding or enforceable unless executed in writing by the parties hereto.
- X. **Entire Agreement and Waiver:** This agreement represents the entire agreement between the parties with respect to the subject matter hereof and may be amended only by written agreement between the parties. Failure to insist upon strict compliance with any of the terms herein (by way of waiver or breach) by either party hereto shall not be deemed to be a continuous waiver in the event of any future breach or waiver of any conditions hereunder.
- XI. **Severability:** If any portion of the agreement, shall for any reason, be invalid or unenforceable, that portion shall be ineffective only to the extent of such validity or unenforceability, and the remaining portion or portions shall nevertheless be valid, enforceable, and of full force and effect.
- XII. **Non-Discrimination:** PCHD shall provide covered services to all eligible persons regardless of race, color, religion, gender, marital status, sexual orientation, national origin, age, disability, or veteran status. PCHD shall treat all clients fairly and equally consistent with its mission and purpose giving due and appropriate regard to a client's medical condition.



XIII. **Applicable Law:** This agreement shall be governed by, constructed and enforced in accordance with and shall be subject to the laws of the State of Missouri. Venue for disputes shall be the Circuit Court of Platte County, Missouri.

XIV. **Confidentiality:** PCHD and The City agree to work together to compile and file an After Action Report identifying both the accomplishments and weaknesses of the operations. Further, it is agreed that the confidentiality of clients and client information will be maintained as written and enforced by the Health Insurance Portability and Accountability Act (HIPAA).

In WITNESS WHEREOF, the parties hereto have executed this agreement.

CITY OF RIVERSIDE

PLATTE COUNTY HEALTH DEPARTMENT

By: \_\_\_\_\_  
Kathleen L. Rose, Mayor

By: \_\_\_\_\_  
Mary Jo Vernon, Director

Date: \_\_\_\_\_

Date: \_\_\_\_\_

**AN ORDINANCE APPROVING THE FINAL PLAT OF THE REPLAT OF RIVERSIDE HORIZONS INDUSTRIAL VI EAST, A REPLAT OF ALL OF LOT 1, RIVERSIDE HORIZONS INDUSTRIAL VI EAST, A SUBDIVISION IN THE CITY OF RIVERSIDE, PLATTE COUNTY, MISSOURI, ALONG WITH THE VACATED PORTION OF DOMAIN STREET, ALL IN THE CITY OF RIVERSIDE, PLATTE COUNTY, MISSOURI**

**WHEREAS**, Application No. PC16-17 was submitted to the City of Riverside, Missouri requesting approval of the Final Plat of the REPLAT OF RIVERSIDE HORIZONS INDUSTRIAL VI EAST, a Replat of all of Lot 1, Riverside Horizons Industrial VI East, a subdivision in the City of Riverside, Platte County, Missouri, along with the vacated portion of Domain Street (the "Plat") to combine said Lot and vacated right of way into a single lot to accommodate the construction of an approximately 416,000 square foot industrial facility;

**WHEREAS**, the Planning Commission held a meeting on November 10, 2016 to consider said application and passed a resolution recommending that the Plat be approved; and

**WHEREAS**, the Board of Directors of The Industrial Development Authority of the City of Riverside, Missouri (the "IDA") held a meeting on December 12, 2016 to consider said application and passed a resolution recommending that the Plat be approved; and

**WHEREAS**, the Board of Aldermen find it to be in the best interests of the City in order to further the objectives of industrial and economic development of the City, as well as in furtherance of the objective to protect the health, safety, and welfare of the businesses and citizens of the City, to approve the Plat as set forth herein.

**NOW, THEREFORE, BE IT ORDAINED BY THE BOARD OF ALDERMEN OF THE CITY OF RIVERSIDE, MISSOURI, AS FOLLOWS:**

**SECTION 1 – BEST INTEREST OF THE CITY TO APPROVE THE PLAT.** It is in the best interests of the City in order to further the objectives of industrial and economic development of the City, as well as in furtherance of the objective to protect the health, safety, and welfare of the businesses and citizens of the City, to approve the Plat attached hereto as **Exhibit A** and incorporated herein and such Plat is hereby approved.

**SECTION 2 – ACCEPTANCE OF DEDICATIONS.** The City of Riverside hereby further accepts the dedication of all streets, municipal uses, easement, access, and utilities shown on the Plat, not heretofore dedicated to the public for the purpose(s) as therein set out.

**SECTION 3 – AUTHORITY GRANTED.** The City hereby authorizes the Mayor of the City and other appropriate City officials to execute and deliver the Plat, consistent with the terms of this Ordinance and Missouri law, and hereby authorizes the Mayor, the City

Administrator, the City Clerk, Special Counsel to the City and other appropriate City officials to take any and all actions as may be deemed necessary or convenient to carry out and comply with the intent of this Ordinance and to execute and deliver for and on behalf of the City all certificates, instruments, agreements and other documents, as may be necessary or convenient to perform all matters herein authorized.

**SECTION 4 – EFFECTIVE DATE.** This Ordinance shall be in full force and effect from and after its passage and approval.

**BE IT REMEMBERED** that the above was read two times by heading only, **PASSED AND APPROVED** by a majority of the Board of Aldermen and **APPROVED** by the Mayor of the City of Riverside, Missouri, this 20<sup>th</sup> day of December, 2016.

ATTEST:

\_\_\_\_\_  
Kathleen L. Rose, Mayor

\_\_\_\_\_  
Robin Kincaid, City Clerk

Approved as to form:

\_\_\_\_\_  
Spencer Fane LLP  
Special Counsel to the City  
by Joe Bednar

**EXHIBIT A**  
**FINAL PLAT**



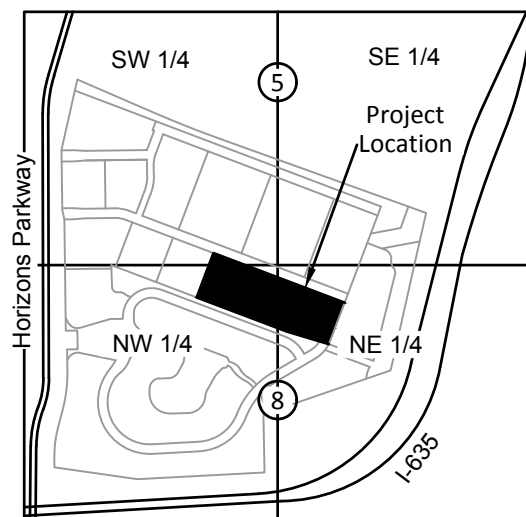
# FINAL PLAT

## REPLAT OF RIVERSIDE HORIZONS INDUSTRIAL VI EAST

ALL OF LOT 2, RIVERSIDE HORIZONS INDUSTRIAL III EAST, TOGETHER WITH PART OF TRACT D AND ALL OF LOTS 9 AND 10, RIVERSIDE HORIZONS EAST FIRST PLAT, BOTH PLATTED SUBDIVISIONS, AND ALL THAT PART OF VACATED DOMAIN STREET RIGHT-OF-WAY, ALL IN THE CITY OF RIVERSIDE, PLATTE COUNTY, MISSOURI

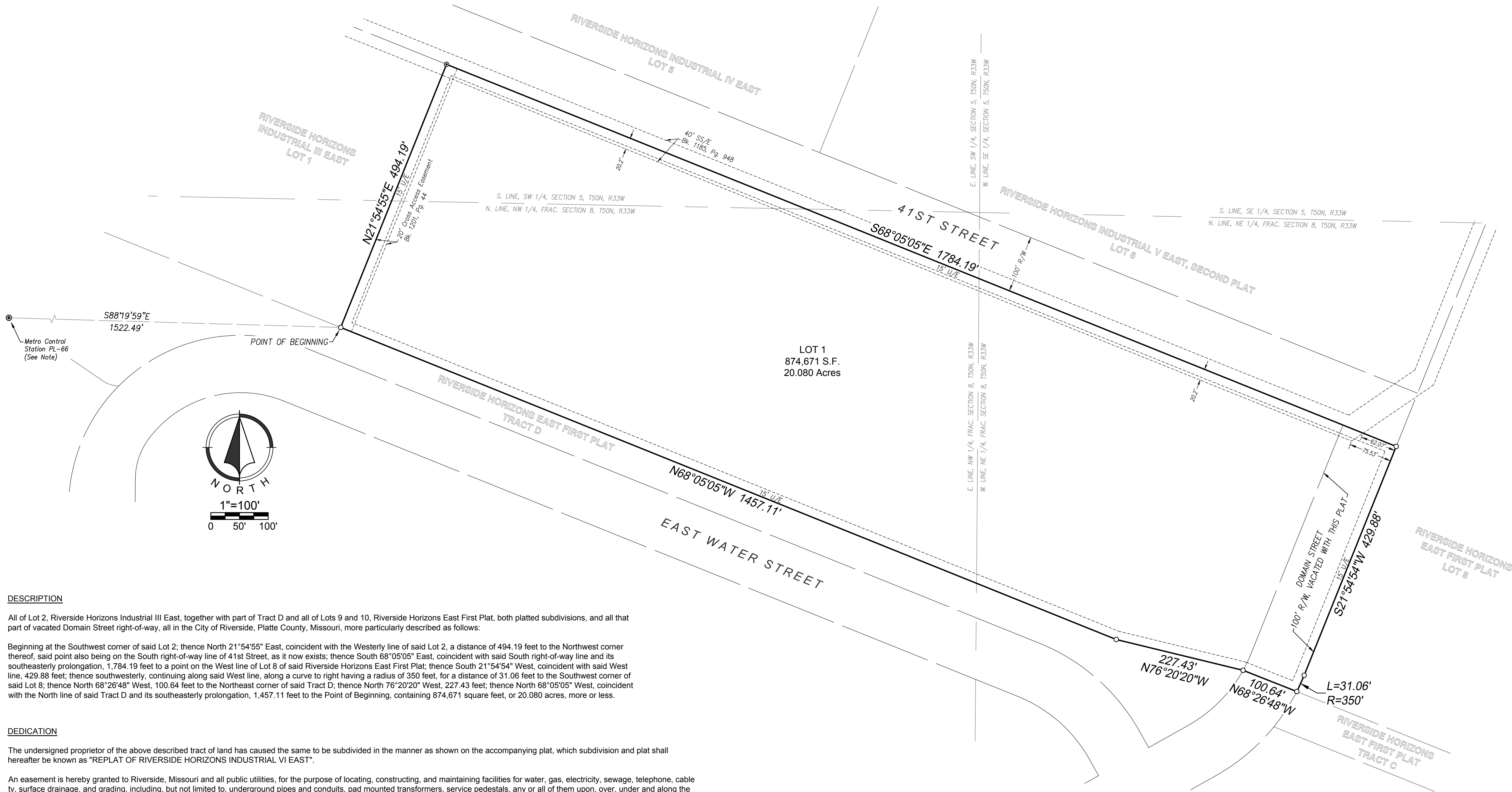
### LEGEND:

- SET 1/2" REBAR WITH RIC MO CAP
- SET 5/8" X 24" REBAR WITH ALUMINUM RIC MO CAP
- A/E ACCESS EASEMENT
- SS/E SANITARY SEWER EASEMENT
- U/E UTILITY EASEMENT



### LOCATION MAP

SECTION 5-50-33  
& 8-50-33  
Scale 1" = 2000'



### DESCRIPTION

All of Lot 2, Riverside Horizons Industrial III East, together with part of Tract D and all of Lots 9 and 10, Riverside Horizons East First Plat, both platted subdivisions, and all that part of vacated Domain Street right-of-way, all in the City of Riverside, Platte County, Missouri, more particularly described as follows:

Beginning at the Southwest corner of said Lot 2; thence North 21°54'55" East, coincident with the Westerly line of said Lot 2, a distance of 494.19 feet to the Northwest corner thereof, said point also being on the South right-of-way line of 41st Street, as it now exists; thence South 68°05'05" East, coincident with said South right-of-way line and its southeasterly prolongation, 1,784.19 feet to a point on the West line of Lot 8 of said Riverside Horizons East First Plat; thence South 21°54'54" West, coincident with said West line, 429.88 feet; thence southwesterly, continuing along said West line, along a curve to right having a radius of 350 feet, for a distance of 31.06 feet to the Southwest corner of said Lot 8; thence North 68°26'48" West, 100.64 feet to the Northeast corner of said Tract D; thence North 76°20'20" West, 227.43 feet; thence North 68°05'05" West, coincident with the North line of said Tract D and its southeasterly prolongation, 1,457.11 feet to the Point of Beginning, containing 874,671 square feet, or 20.080 acres, more or less.

### DEDICATION

The undersigned proprietor of the above described tract of land has caused the same to be subdivided in the manner as shown on the accompanying plat, which subdivision and plat shall hereafter be known as "REPLAT OF RIVERSIDE HORIZONS INDUSTRIAL VI EAST".

An easement is hereby granted to Riverside, Missouri and all public utilities, for the purpose of locating, constructing, and maintaining facilities for water, gas, electricity, sewage, telephone, cable tv, surface drainage, and grading, including, but not limited to, underground pipes and conduits, pad mounted transformers, service pedestals, any or all of them upon, over, under and along the strips of land designated as utility easements (U/E), provided that the easement granted herein is subject to any and all existing easements. Any utilities located within the designated utility easements, by virtue of their existence, do hereby covenant, consent, and agree that they shall be subordinate to said public right of way in the event that additional public right of way is dedicated over the location of the utility easement. Where other easements are designated for a particular purpose, the use thereof shall be limited to that purpose only. All of the above easements shall be kept free from any and all obstructions which would interfere with the construction or reconstruction and proper, safe and continuous maintenance of the aforesaid uses and specifically there shall not be built thereon or thereover any structure (except driveways, paved areas, grass, shrubs and fences) nor shall there be any obstruction to interfere with the agents and employees of Riverside, Missouri, and its franchised utilities from going upon said easement and as much of the adjoining lands as may be reasonably necessary in exercising the rights granted by the easement.

### EXECUTION

IN TESTIMONY WHEREOF, the undersigned proprietor has caused this instrument to be executed this \_\_\_\_ day of \_\_\_\_\_, 2016.

THE INDUSTRIAL DEVELOPMENT AUTHORITY OF THE CITY OF RIVERSIDE, MISSOURI

Leland Finley, President Sarah Wagner, Asst. Secretary

STATE OF MISSOURI )  
COUNTY OF PLATTE )

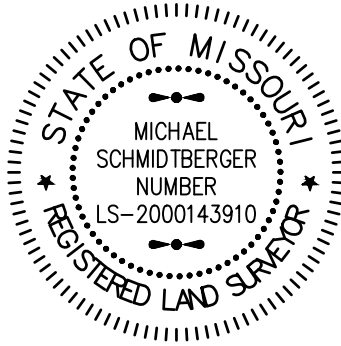
BE IT REMEMBERED, that on this \_\_\_\_ day of \_\_\_\_\_, 2016, before me a Notary Public in and for said County and State, came Leland Finley, President of The Industrial Development Authority of the City of Riverside, Missouri, and Sarah Wagner, Assistant Secretary, who are personally known to me to be the same persons who executed the foregoing instrument of writing on behalf of said owner, and they duly acknowledged the execution of the same.

IN WITNESS WHEREOF, I have hereunto set my hand and seal on the day and year written above.

Notary Public My Appointment Expires: \_\_\_\_\_

### CERTIFICATION

I hereby certify that this subdivision plat is based on an actual survey completed on the ground by me or under my direct supervision, and that said survey meets or exceeds the current minimum standards for "Urban Class" boundary surveys as established by the Department of Natural Resources, Division of Geology and Land Survey of the State of Missouri and the Missouri Board for Architects, Professional Engineers and Land Surveyors, and that the results of said survey are represented on this drawing to the best of my professional knowledge and belief.



Michael Schmidtberger, Missouri LS 2000143910

### APPROVALS

This is to certify that the within PLAT of "REPLAT OF RIVERSIDE HORIZONS INDUSTRIAL VI EAST" was submitted to and approved by the City of Riverside, Missouri, this \_\_\_\_ day of \_\_\_\_\_, 2016.

BY ORDINANCE NO.: \_\_\_\_\_

BY: \_\_\_\_\_  
Kathleen Rose, Mayor

BY: \_\_\_\_\_  
Robin Kincaid, City Clerk

DATE: \_\_\_\_\_

BY: \_\_\_\_\_  
Stephen King, Chairman of Planning Commission

DATE: \_\_\_\_\_

### NOTES:

Basis of Bearings: platted, N 21°54'55" E, along the East line of Lot 1, Riverside Horizons Industrial III East.

Metro Control Station PL-66  
Missouri State Plane Coordinate System 1983 (NAD-83) West Zone  
Northing: 332979.501m Easting: 837793.685m  
Converted to feet: Northing: 1092450.2451 Easting: 2748661.4454

All bearings and distances shown on this plat are measured and platted unless otherwise noted.

### CLOSURE CALCULATIONS:

Precision, 1 part in: 707210.899'  
Error distance: 0.006'  
Error direction: S11°34'59"W  
Perimeter: 4545.960'

All distances shown on this plat are in ground feet.

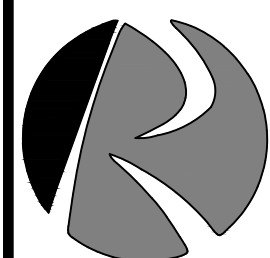
Flood Plain Note: According to the F.E.M.A. Flood Insurance Rate Map Number 29165C0392D, effective April 2, 2015, this tract graphically lies in OTHER FLOOD AREAS, ZONE X, defined as areas of 0.2% annual chance flood; areas of 1% annual chance flood with average depths of less than 1 foot or drainage areas less than 1 square mile; and areas protected by levees from 1% annual chance flood.

### REPLAT OF RIVERSIDE HORIZONS INDUSTRIAL VI EAST

#### Prepared For:

The Industrial Development Authority of the City of Riverside, Missouri  
2950 NW Vivion Road  
Riverside, Missouri 64150  
(816)741-3993

Date of Preparation:  
October 11, 2016



**Renaissance**  
**Infrastructure**  
**Consulting**

5015 NW. Canal Street, Suite 100  
Riverside, Missouri 64150

816.800.9950  
www.ric-consult.com

**AN ORDINANCE AUTHORIZING AND APPROVING A CONTRACT FOR TRANSIT SERVICE BY AND BETWEEN THE KANSAS CITY AREA TRANSPORTATION AUTHORITY AND THE CITY OF RIVERSIDE, MISSOURI IN AN AMOUNT NOT TO EXCEED \$14,997.00**

**WHEREAS**, the City of Riverside (the "City") is a city of the fourth class, with the authority pursuant to Chapter 70 of the Revised Statutes of the State of Missouri to enter into agreements with other political subdivisions; and

**WHEREAS**, the Kansas City Area Transportation Authority ("KCATA") is a body corporate and politic and a political subdivision of the states of Missouri and Kansas with the authority to enter into agreements with other political subdivisions; and

**WHEREAS**, a sound, efficient and viable public transportation system is essential to the socioeconomic well being of the Kansas City Area Transportation District (hereinafter referred to as the "District"), including the Counties of Cass, Clay, Jackson, and Platte in Missouri, and the Counties of Johnson, Leavenworth, and Wyandotte in Kansas; and

**WHEREAS**, the KCATA is a public agency authorized by law to plan, own, operate, have and generally deal with public transportation systems and facilities in the District; and

**WHEREAS**, the City desires to promote the convenience, comfort, prosperity, general interests and welfare of its citizens; and

**WHEREAS**, the City of Riverside desires to enter into an agreement with the KCATA for transit services as set forth in Exhibit "A" attached hereto and incorporated herein by reference.

**NOW THEREFORE, BE IT ORDAINED BY THE BOARD OF ALDERMEN OF THE CITY OF RIVERSIDE, MISSOURI, AS FOLLOWS:**

**SECTION 1 - APPROVAL OF CONTRACT.** That the Contract for Transit Services by and between the Kansas City Area Transportation Authority and the City of Riverside, Missouri, in substantially the same form attached hereto as Exhibit A is hereby authorized and approved in an amount not to exceed \$14,997.00.

**SECTION 2 - EXECUTION OF CONTRACT.** That the Mayor or City Administrator is authorized to execute the Contract and all documents necessary to the performance thereof, and the City Clerk is authorized to attest to the same.

**SECTION 3 – REPEAL OF ORDINANCES IN CONFLICT.** All ordinances or parts of ordinances in conflict with this ordinance are hereby repealed.

**SECTION 4 – SEVERABILITY CLAUSE.** The provisions of this ordinance are severable and if any provision hereof is declared invalid, unconstitutional or unenforceable, such determination shall not affect the validity of the remainder of this ordinance.

**BILL NO. 2016-061**

**ORDINANCE NO. \_\_\_\_\_**

**SECTION 5 – EFFECTIVE DATE.** This ordinance shall be in full force and effect from and after the date of its passage and approval.

**BE IT REMEMBERED** that the above was read two times by heading only, **PASSED AND APPROVED** by a majority of the Board of Aldermen and **APPROVED** by the Mayor of the City of Riverside, Missouri, this 20<sup>th</sup> day of December, 2016.

\_\_\_\_\_  
Mayor Kathleen L. Rose

ATTEST:

\_\_\_\_\_  
Robin Kincaid, City Clerk

**KANSAS CITY AREA TRANSPORTATION AUTHORITY**

Contract for Transit Service

**RIVERSIDE, MISSOURI**

**THIS CONTRACT**, entered into this \_\_\_\_ day of \_\_\_\_\_ 201\_\_\_\_ by and between the **KANSAS CITY AREA TRANSPORTATION AUTHORITY** (hereinafter referred to as the "KCATA"), a body corporate and politic and a political subdivision of both the States of Missouri and Kansas and the **CITY OF RIVERSIDE, MISSOURI** (hereinafter referred to as the "Community").

**WITNESSETH:**

**WHEREAS**, a sound, efficient and viable public transportation system is essential to the socioeconomic well being of the Kansas City Area Transportation District (hereinafter referred to as the "District"), including the Counties of Cass, Clay, Jackson, and Platte in Missouri, and the Counties of Johnson, Leavenworth, and Wyandotte in Kansas; and

**WHEREAS**, the KCATA is a public agency authorized by law to plan, own, operate, have and generally deal with public transportation systems and facilities in the District; and

**WHEREAS**, the Community desires to promote the convenience, comfort, prosperity, general interests and welfare of its citizens, and

**WHEREAS**, the public transportation facilities and services of most immediate concern are those estimated to be provided by the KCATA at a deficit, described generally in amounts and, more specifically, by formula set forth in Amendment "A" adopted in January, 1976, modified in August, 1977, revised in January, 1983, and in December 1997.

**NOW, THEREFORE**, for and in consideration of the premises and the mutual covenants herein contained, the parties hereto agree as follows:

1. The Community requests public transportation services (hereinafter referred to as "Contract Service", set forth in Attachment "B", be operated by the KCATA for the period January 1, 2017 through December 31, 2017.
2. The level of service as generally set forth in Attachment "B" shall not be changed or be modified without the consent of the Community.

3. The computations and, more specifically, the formula contained in Attachment "A" attached hereto and made a part hereof, are the accepted methods for the determination of the estimated deficit of the Community.
4. The KCATA and the Community estimate the Community's total payment for the service (hereinafter referred to as "Local Share") to be **\$14,997**. This estimate is based on the following components of cost and revenue to be applied to the Agreement:

Service Cost	\$ 22,662
Federal & State Assistance	\$ (6,853)
Passenger Revenue	<u>\$ (2,300)</u>
Estimated Total Deficit	\$ 13,509

Local Operating Contribution	\$ 13,509
Local Capital Contribution	<u>\$ 1,488</u>
Total Local Share	<b>\$ 14,997</b>

5. It is the understanding of the parties that, notwithstanding any provision of this Agreement, the maximum obligation of the Community under this Contract shall be the sum of **\$14,997**. If the actual total deficit and other factors (i.e. early termination or lowering of service level) are such that the KCATA deems the full Local Share is not required, the KCATA shall require payment of less than the Local share, or reimburse the Community for a portion of the Local Share previously paid.
6. The method of payment of the Local Share provided for in Paragraph "4" is as follows:
  - a. The Community's monthly Local Share will be one-twelfth of the Community's portion of the estimated total deficit amount for the twelve-month period.
  - b. The KCATA will invoice the community for 90% of Community monthly Local Share by the 15th of the month preceding the month service will be provided. The Community is required to remit 90% of the monthly Local Share by the first of the month service will be provided.
  - c. By the 20th of the month following the month in which service was provided, the KCATA will provide the Community with reports showing service capital and operating costs and revenue for Contract Services. The report will also provide a reconciliation of subsidy amounts with the advance payment provided to in Sub-paragraph "b". The report will detail Local Share and Federal and State Share amounts used to cover the month's service deficit. Any balance of Local Share subsidy required by the reconciliation will be invoiced at this time, to be paid within ten days.

- d. For the month of December, the monthly report and reconciliation provided for in Sub-paragraph "c" will not be prepared until the completion of the KCATA's annual audit.
7. When the estimated total deficit of \$13,509 is reached, KCATA's obligation to furnish services shall terminate. The Community and KCATA may mutually agree to amend this Contract to provide additional operating subsidy or to adjust the level of service so that the cost of such service will not exceed the contractual subsidy.
8. If for any reason the KCATA is unable to obtain the federal or state assistance (the Federal and State Share), as provided for in Paragraph "4" of this Contract, the Community will be immediately notified and this contract will be amended to provide additional Local Share subsidy or to adjust the level of service. If a satisfactory amendment is not agreed to after a reasonable period, KCATA's obligation to furnish services will terminate.
9. The KCATA shall indemnify, save and hold the Community harmless from any and all damage, loss or liability of any kind whatsoever arising out of this Contract, including, but not limited to, any loss occasioned by reason of any injury to property or third persons occasioned, in whole or in part, by any act, omission, neglect or wrongdoing of the KCATA, or any of its officers, agents, representatives or employees. At its own cost and expense, the KCATA will defend all losses arising therefrom.

IN WITNESS WHEREOF, the parties hereto have caused this instrument to be executed as of the day and year first above written.

**KANSAS CITY AREA TRANSPORTATION AUTHORITY**

By: \_\_\_\_\_  
Steve Klika, Chairman of the Board of Commissioners

ATTEST:

By: \_\_\_\_\_

**CITY OF RIVERSIDE, MISSOURI**

By: \_\_\_\_\_  
City Administrator

ATTEST:

By: \_\_\_\_\_

## **ATTACHMENT "A"**

### **REVENUE AND COST ALLOCATION PROCEDURES**

#### **Operating Expense and Revenue**

The procedure to be used in determining passengers, direct operating expenses, indirect operating expenses, farebox revenue, and estimated loss for transit service shall be as follows:

**A. Passengers and Revenue** - The number of passengers and the amount of revenue reported will be derived from electronic farebox reports.

1. Revenue figures are computed as follows:
  - a. Total Fare Revenue is the total farebox revenue plus pass sales proration.
  - b. Pass Sales proration for a line is the Pass Sales Revenue multiplied by a pass utilization factor as determined by data from electronic fareboxes.
2. Passenger types - definitions
  - a. Intra-city passenger - a passenger boarding and alighting in the same jurisdiction.
  - b. Inter-city passenger - a passenger who boards in one jurisdiction and alights in another.
3. Computation of inter-city and intra-city passengers
  - a. Intra-city passengers for each subsidizing jurisdiction will be determined by multiplying total passengers by the appropriate intra-city passengers ratios as determined by periodic activity checks. An intra-city passenger ratio is the ratio of passengers who both board and alight a bus within that community to total route passengers on the line.
  - b. Inter-city passengers for the route will be determined by subtracting the intra-city passengers from the total route passengers.

**B. Direct Operating Expenses** - Each route shall be charged direct labor and benefits on the basis of scheduled pay hours (including allowances, spread, guarantee, and overtime) times the fully burdened operator cost per hour of service for each type of bus used

(Large, Small, or Metroflex). Each route shall be charged fuel and tire expense for the same type of bus used (Large, Small or Metroflex) in the proportion of route miles per type of bus to total system miles for the same type of bus.

- C. Indirect Operating Expenses** - Indirect operating expenses shall be allocated to each route on the ratio of route miles to total system miles for the same type of bus used (Large, Small, or Metroflex). Indirect operating expenses include all expenses except direct labor and fuel and tire expense, such as maintenance cost, vanpool operations, administrative and overhead expense, and a contribution to self-insured reserves for revenue vehicle and workers compensation.
- D. Estimated Net Income or Loss - Intra-City Routes** - Estimated net income or loss for each route shall be calculated by subtracting total fare revenue for each route from the total operating expenses for each route.
- E. Allocation of Net Income or Loss on Inter-City Routes.**

- 1. Suburban Express Routes

- a. A suburban express route is a route or portion of a route that is designed to serve inter-city passengers and suburban community intra-city passengers, and does not serve Kansas City, Missouri, intra-city passengers.
- b. Net income or net losses of inter-city routes shall be prorated among the subsidizing jurisdictions by calculating the net loss per passenger (total operating expense less total fare revenue) and then multiplying the net loss per passenger by the number of passengers boarding in each jurisdiction.

- 2. Local Service Inter-City Routes

- a. A local service inter-city route is a route designed to serve Kansas City, Missouri, intra-city passengers, as well as inter-city passengers and suburban community intra-city passengers.
- b. Revenue shall be credited among subsidizing jurisdictions by assigning intra-city passenger revenue to the jurisdiction in which the trips are made. Inter-city passenger revenue shall be assigned by calculating the revenue per inter-city passenger and then by multiplying the revenue per inter-city passenger by the number of inter-city passengers boarding in each jurisdiction.
- c. Operating costs shall be allocated among subsidizing jurisdictions as follows:



- (1) Direct labor costs shall be allocated on the basis of operator cost per hour of service multiplied by the actual time operated in each jurisdiction.
    - (2) Fuel and tire expense in the proportion of miles in each jurisdiction to total system miles.
    - (3) Indirect operating expense in the proportion of miles in each jurisdiction to total system miles.
  - d. The Net Income or Loss for each jurisdiction is calculated as the sum of direct labor cost, fuel and tire expense, and indirect operating expense, less passenger revenue credit.
- F. Capital Expense** - Each jurisdiction will be charged capital expense, prorated on community miles to system miles, to be used for the acquisition of buses, facilities and other equipment. The capital charge may be used for the purchase of vans for a vanpool operation that will facilitate in providing a regional transit system. Such vanpool operation must provide service to or from the Community that is reasonable when compared to the amount of the Community's capital contribution for the vans.
- G. Enclave Communities** - Local service inter-city routes operating from a part of Kansas City, Missouri, through another jurisdiction and into another portion of Kansas City, Missouri, will be treated differently for the allocation of Net Income or Loss. The Net Income or Loss for the intermediate (enclave) jurisdiction will be based on 50% of the calculated cost for that jurisdiction per Item "E". The remaining 50% of the calculated cost within the intermediate jurisdiction will be allocated to Kansas City, Missouri.
- H. For Service Implemented After December 31, 1997** – Service implemented after December 31, 1997, that is above the service level that exists as of December 31, 1997, will be allocated costs as stated in other sections of this Appendix, except for Indirect Operating Expenses. Indirect Operating Expenses shall be allocated to such service based on 45 percent of the ratio of route miles to total system miles for each type of bus. Indirect Operating Expenses include all expenses except direct labor and fuel and tire expense; such as maintenance cost, vanpool operations, administrative and overhead expense, etc.

## **ATTACHMENT "B"**

### **CITY OF RIVERSIDE**

### **CONTRACT SERVICE**

#### **Route #243- Riverside/Antioch Connector**

The KCATA agrees to furnish the following transit service to the City of Riverside via route #243-Riverside/Antioch Connector:

- Twenty-three (23) trips each weekday, of which eleven (11) are eastbound and twelve (12) are westbound during the time period of 6:46 a.m. to 6:12 p.m. The route will make scheduled transfer connections with multiple bus routes at the KCATA Antioch Center park-and-ride facility.
- Route #243 will serve Riverside via NW Gateway, Vivion Road, and High Drive (to access Riverside Community Center and City Hall).

Full Fare: \$1.50

Reduced Fare: \$0.75



**RESOLUTION NO. R - 2016-074**

**A RESOLUTION AUTHORIZING THE EXPENDITURE OF FUNDS OUT OF THE CITY TREASURY OF THE CITY OF RIVERSIDE FOR FISCAL YEAR 2016-2017 WEEK ENDING DECEMBER 9<sup>TH</sup> AND DECEMBER 16<sup>TH</sup> IN THE AMOUNT OF \$2,007,795.23.**

**WHEREAS**, the Board of Aldermen find it is in the best interest of the citizens of the City of Riverside to authorize and approve the expenditure of funds as set forth in Exhibit "A" attached hereto;

**NOW THEREFORE, BE IT RESOLVED BY THE BOARD OF ALDERMEN OF THE CITY OF RIVERSIDE, MISSOURI, AS FOLLOWS:**

**THAT** the disbursements and expenditure of funds from the city treasury in the amount of \$2,007,795.23 as set forth in Exhibit "A" attached hereto and made a part hereof by reference are hereby authorized and approved.

**FURTHER THAT** the City Administrator is hereby authorized to execute all agreements or documents necessary to approve the purchase of goods and services contemplated therein and the Finance Director is authorized to issue a check therefor to the respective companies, firms, persons in the amounts set forth therein.

**PASSED AND ADOPTED** by the Board of Aldermen and **APPROVED** by the Mayor of the City of Riverside, Missouri, the 20<sup>TH</sup> day of December, 2016.

---

Mayor Kathleen L. Rose

ATTEST:

---

Robin Kincaid, City Clerk



# Expense Approval Report

By Fund

Payment Dates 12/14/2016 - 12/14/2016

Vendor Name	Payable Number	Post Date	Description (Item)	Account Number	Amount
<b>Fund: 10 - GENERAL FUND</b>					
LEVEL 3 COMMUNICATIONS,	49184899	12/14/2016	2950 NW VIVION RD	10-112-000-27000	665.21
TIME WARNER	107747701 12/16	12/14/2016	CABLE SERVICE	10-341-000-25600	65.47
CELLCO PARTNERSHIP	9776156835	12/06/2016	DATA CARDS	10-224-000-27200	45.07
TIME WARNER - PUBLIC WOR	040803901 12/16	12/14/2016	CABLE SERVICE	10-331-000-25600	131.02
LEVEL 3 COMMUNICATIONS,	49520672	12/14/2016	2950 NW VIVION RD	10-112-000-27000	667.98
SAM'S CLUB DIRECT	001426	12/14/2016	SUPPLIES	10-221-000-36200	20.98
SAM'S CLUB DIRECT	001426	12/14/2016	SUPPLIES	10-221-000-36200	27.92
SAM'S CLUB DIRECT	001426	12/14/2016	SUPPLIES/SHELVING	10-224-000-41600	749.90
SAM'S CLUB DIRECT	001426	12/14/2016	SUPPLIES	10-224-000-50500	119.76
SAM'S CLUB DIRECT	001426	12/14/2016	SUPPLIES	10-224-000-50500	75.76
SAM'S CLUB DIRECT	001426	12/14/2016	SUPPLIES	10-224-000-50500	19.94
KCPL - STREET LTG	0107-16-0767 12/16	12/14/2016	STREETLIGHTS	10-331-000-26800	23,238.78
MISSOURI AMERICAN WATER	1017210010445575 1216	12/14/2016	2805 NW VIVION RD	10-336-111-25400	42.65
MISSOURI AMERICAN WATER	1017210012068028 1216	12/14/2016	W PLATTE/VALLEY	10-336-112-25400	1,207.40
MISSOURI AMERICAN WATER	1017210015746389 1216	12/14/2016	4200 RIVERSIDE ST	10-337-101-25400	78.13
MISSOURI AMERICAN WATER	1017210015746471 1216	12/14/2016	4498 HIGH DR DETCK	10-337-104-25400	79.13
MISSOURI AMERICAN WATER	1017210015748552 1216	12/14/2016	4820 HOMESTEAD TER PARK	10-336-109-25400	16.33
MISSOURI AMERICAN WATER	1017210015884915 1216	12/14/2016	1001 NW ARGOSY PARK	10-336-107-25400	183.60
MISSOURI AMERICAN WATER	1017210015953323 1216	12/14/2016	2901 NW VIVION RD PARK	10-336-108-25400	17.82
BETTY NAYLOR	12/06/16	12/14/2016	REIMB HEALTH INS.	10-112-000-19000	295.49
WRIGHT EXPRESS FSC	47942235	12/14/2016	FUEL PURCHASE - JEFFREY	10-331-000-54100	98.95
WRIGHT EXPRESS FSC	47942235	12/14/2016	FUEL PURCHASE - WOODDELL	10-331-000-54100	118.87
WRIGHT EXPRESS FSC	47942235	12/14/2016	FUEL PURCHASE - OLIPHANT	10-331-000-54100	53.37
WRIGHT EXPRESS FSC	47942235	12/14/2016	FUEL PURCHASE - CAMERON	10-331-000-54100	42.02
WRIGHT EXPRESS FSC	47942235	12/14/2016	FUEL PURCHASE - WAGNER	10-331-000-54100	93.63
WRIGHT EXPRESS FSC	47942235	12/14/2016	FUEL PURCHASE - MCGUIRE	10-331-000-54100	50.49
WRIGHT EXPRESS FSC	47942235	12/14/2016	FUEL PURCHASE - BUESCHER	10-331-000-54100	33.33
WRIGHT EXPRESS FSC	47942235	12/14/2016	FUEL PURCHASE - SHELTON	10-331-000-54100	309.07
WRIGHT EXPRESS FSC	47942235	12/14/2016	FUEL PURCHASE - HOOVER	10-332-000-54100	57.03
WRIGHT EXPRESS FSC	47942235	12/14/2016	FUEL PURCHASE - FULLER	10-819-000-54000	58.10
MISSOURI AMERICAN WATER	1017210010504726 1216	12/14/2016	RIVERWAY/PLATTE RD FOUTN	10-336-112-25400	16.33
MISSOURI AMERICAN WATER	1017210010690719 1216	12/14/2016	777 A ARGOSY PKWY IRRIG	10-336-113-25400	65.70
MISSOURI AMERICAN WATER	1017210012698627 1216	12/14/2016	4301 B TULLISON RD IRRIG	10-336-113-25400	65.70
MISSOURI AMERICAN WATER	1017210014458047 1216	12/14/2016	2950 NW VIVION RD DETEC	10-337-102-25400	90.57
METRO CHIEFS & SHERIFFS AS	12/07/16	12/14/2016	MBRSHF DUES/MILLS,SKINRO	10-224-000-34500	200.00
METRO K C CHAPTER OF ICC	12/07/16	12/14/2016	MBRSHF/FULLER, JAMES	10-819-000-34500	30.00
SAM'S CLUB DIRECT	003189	12/14/2016	SUPPLIES	10-226-000-40000	64.98
MISSOURI AMERICAN WATER	1017210010165930 1216	12/14/2016	2990 NW VIVION RD DETCK	10-337-103-25400	205.44
CELLCO PARTNERSHIP	9775892228	12/14/2016	DATA CARDS/ROSE, K	10-112-000-27201	51.65
CELLCO PARTNERSHIP	9775892228	12/14/2016	DATA CARDS	10-224-000-27200	701.02
CELLCO PARTNERSHIP	9775892228	12/14/2016	DATA CARDS/MOORE, S	10-819-000-27200	51.65
IAFF LOCAL 42	12/09/16	12/14/2016	EMPLOYEE W/H 12/09 PAYRO	10-20510	638.53
ICMA-RC VANTAGEPOINT	41295537	12/14/2016	EMPLOYEE W/H 12/09 PAYRO	10-20006	919.36
ICMA-RC VANTAGEPOINT	41295582	12/14/2016	EMPLOYEE W/H 12/09 PAYRO	10-20006	125.00

**Fund 10 - GENERAL FUND Total: 31,889.13**

**Grand Total: 31,889.13**



# Expense Approval Report

## By Fund

Payment Dates 12/07/2016 - 12/07/2016

Vendor Name	Payable Number	Post Date	Description (Item)	Account Number	Amount
<b>Fund: 10 - GENERAL FUND</b>					
AFLAC	971413	12/07/2016	EMPLOYEE PREMIUMS	10-20008	90.40
PACIFIC TELEMAGEMENT S	882144	12/07/2016	EH YOUNG	10-336-107-27000	75.00
PACIFIC TELEMAGEMENT S	882144	12/07/2016	POOL	10-336-110-27000	75.00
PACIFIC TELEMAGEMENT S	882144	12/07/2016	COMMUNITY CENTER	10-341-000-27000	78.00
IAFF LOCAL 42	11/25/16	12/07/2016	EMPLOYEE W/H 11/25 PAYRO	10-20510	541.29
SAM'S CLUB DIRECT	000427 11/16	12/07/2016	SUPPLIES	10-226-000-53720	479.65
SAM'S CLUB DIRECT	001112	12/07/2016	SUPPLIES/SENIOR DINNER	10-224-000-22901	592.71
SAM'S CLUB DIRECT	006493	12/07/2016	SUPPLIES/SENIOR DINNER	10-224-000-22901	14.98
JENNIFER ENNA	12/01/16	12/07/2016	REIMB CITY'S SHARE/GYM ME	10-115-000-21301	32.97
YMCA OF GREATER KANSAS C	12/01/16A	12/07/2016	RIVERSIDE SUPPORT FEE	10-341-000-22800	2,300.00
YMCA OF GREATER KANSAS C	12/01/16B	12/07/2016	REIMB CITY'S SHARE/GYM ME	10-115-000-21301	931.50
YMCA OF GREATER KANSAS C	12/01/16B	12/07/2016	REIMB CITY'S SHARE/GYM ME	10-341-000-22800	20,396.25
LINCOLN NATIONAL LIFE INS.	3354134318	12/07/2016	LIFE INS. - ADMINISTRATION	10-112-000-19200	51.66
LINCOLN NATIONAL LIFE INS.	3354134318	12/07/2016	LIFE INS. - MUNICIPAL COURT	10-216-000-19200	7.38
LINCOLN NATIONAL LIFE INS.	3354134318	12/07/2016	LIFE INS. - PUBLIC SAFETY	10-221-000-19200	435.54
LINCOLN NATIONAL LIFE INS.	3354134318	12/07/2016	LIFE INS. - COMMUNICATION	10-223-000-19200	223.29
LINCOLN NATIONAL LIFE INS.	3354134318	12/07/2016	LIFE INS. - PS ADMINISTRATIO	10-224-000-19200	43.10
LINCOLN NATIONAL LIFE INS.	3354134318	12/07/2016	LIFE INS. - FIRE DEPARTMENT	10-226-000-19200	205.66
LINCOLN NATIONAL LIFE INS.	3354134318	12/07/2016	LIFE INS. - PUBLIC WORKS	10-331-000-19200	59.04
LINCOLN NATIONAL LIFE INS.	3354134318	12/07/2016	LIFE INS. - ENGINEERING	10-332-000-19200	21.65
LINCOLN NATIONAL LIFE INS.	3354134318	12/07/2016	LIFE INS. - COMMUNITY CENT	10-341-000-19200	14.76
LINCOLN NATIONAL LIFE INS.	3354134318	12/07/2016	LIFE INS. - COMMUNITY DEVE	10-819-000-19200	107.54
MOBILFONE	6059368	12/07/2016	PAGER RENTAL	10-224-000-27400	240.00
MIDWEST PUBLIC RISK OF MI	B024ZK	12/07/2016	HEALTH INS. - ADMINISTRATI	10-112-000-19000	3,667.19
MIDWEST PUBLIC RISK OF MI	B024ZK	12/07/2016	DENTAL INS. - ADMINISTRATI	10-112-000-19100	425.41
MIDWEST PUBLIC RISK OF MI	B024ZK	12/07/2016	VISION INS. - ADMINISTRATI	10-112-000-19300	74.32
MIDWEST PUBLIC RISK OF MI	B024ZK	12/07/2016	HEALTH INS. - MUNICIPAL CO	10-216-000-19000	417.31
MIDWEST PUBLIC RISK OF MI	B024ZK	12/07/2016	DENTAL INS. - MUNICIPAL CO	10-216-000-19100	34.16
MIDWEST PUBLIC RISK OF MI	B024ZK	12/07/2016	VISION INS. - MUNICIPAL CO	10-216-000-19300	7.54
MIDWEST PUBLIC RISK OF MI	B024ZK	12/07/2016	HEALTH INS. - PUBLIC SAFETY	10-221-000-19000	21,345.79
MIDWEST PUBLIC RISK OF MI	B024ZK	12/07/2016	DENTAL INS. - PUBLIC SAFETY	10-221-000-19100	1,461.46
MIDWEST PUBLIC RISK OF MI	B024ZK	12/07/2016	VISION INS. - PUBLIC SAFETY	10-221-000-19300	316.66
MIDWEST PUBLIC RISK OF MI	B024ZK	12/07/2016	HEALTH INS. - COMMUNICATI	10-223-000-19000	5,265.07
MIDWEST PUBLIC RISK OF MI	B024ZK	12/07/2016	DENTAL INS. - COMMUNICAT	10-223-000-19100	459.57
MIDWEST PUBLIC RISK OF MI	B024ZK	12/07/2016	VISION INS. - COMMUNICATI	10-223-000-19300	88.32
MIDWEST PUBLIC RISK OF MI	B024ZK	12/07/2016	HEALTH INS. - PS ADMINISTR	10-224-000-19000	3,809.53
MIDWEST PUBLIC RISK OF MI	B024ZK	12/07/2016	DENTAL INS. - PS ADMINISTR	10-224-000-19100	203.90
MIDWEST PUBLIC RISK OF MI	B024ZK	12/07/2016	VISION INS. - PS ADMINISTRA	10-224-000-19300	50.62
MIDWEST PUBLIC RISK OF MI	B024ZK	12/07/2016	HEALTH INS. - FIRE DEPARTM	10-226-000-19000	8,700.17
MIDWEST PUBLIC RISK OF MI	B024ZK	12/07/2016	DENTAL INS. - FIRE DEPARTM	10-226-000-19100	849.76
MIDWEST PUBLIC RISK OF MI	B024ZK	12/07/2016	VISION INS. - FIRE DEPARTME	10-226-000-19300	161.56
MIDWEST PUBLIC RISK OF MI	B024ZK	12/07/2016	HEALTH INS. - PUBLIC WORKS	10-331-000-19000	4,368.09
MIDWEST PUBLIC RISK OF MI	B024ZK	12/07/2016	DENTAL INS. - PUBLIC WORK	10-331-000-19100	273.28
MIDWEST PUBLIC RISK OF MI	B024ZK	12/07/2016	VISION INS. - PUBLIC WORKS	10-331-000-19300	52.78
MIDWEST PUBLIC RISK OF MI	B024ZK	12/07/2016	HEALTH INS. - ENGINEERING	10-332-000-19000	1,783.25
MIDWEST PUBLIC RISK OF MI	B024ZK	12/07/2016	DENTAL INS. - ENGINEERING	10-332-000-19100	119.03
MIDWEST PUBLIC RISK OF MI	B024ZK	12/07/2016	VISION INS. - ENGINEERING	10-332-000-19300	29.08
MIDWEST PUBLIC RISK OF MI	B024ZK	12/07/2016	HEALTH INS. - COMMUNITY C	10-341-000-19000	983.91
MIDWEST PUBLIC RISK OF MI	B024ZK	12/07/2016	DENTAL INS. - COMMUNITY C	10-341-000-19100	68.32
MIDWEST PUBLIC RISK OF MI	B024ZK	12/07/2016	VISION INS. - COMMUNITY C	10-341-000-19300	15.08
MIDWEST PUBLIC RISK OF MI	B024ZK	12/07/2016	HEALTH INS. - COMMUNITY D	10-819-000-19000	2,644.06
MIDWEST PUBLIC RISK OF MI	B024ZK	12/07/2016	DENTAL INS. - COMMUNITY	10-819-000-19100	1,424.34
MIDWEST PUBLIC RISK OF MI	B024ZK	12/07/2016	VISION INS. - COMMUNITY D	10-819-000-19300	43.08

**Expense Approval Report****Payment Dates: 12/07/2016 - 12/07/2016**

<b>Vendor Name</b>	<b>Payable Number</b>	<b>Post Date</b>	<b>Description (Item)</b>	<b>Account Number</b>	<b>Amount</b>
MISSOURI AMERICAN WATER	1017210010166209 1116	12/07/2016	2990 NW VIVION RD FIRE	10-337-103-25400	232.30
MISSOURI AMERICAN WATER	1017210015746112 1216	12/07/2016	4498 HIGH DR FIRE	10-337-103-25400	116.15
MISSOURI AMERICAN WATER	1017210015746204 1216	12/07/2016	2950 NW VIVION RD FIRE	10-337-103-25400	522.36
SAM'S CLUB DIRECT	003135 12/16	12/07/2016	SUPPLIES/SENIOR DINNER	10-224-000-22901	114.05
<b>Fund 10 - GENERAL FUND Total:</b>					<b>87,144.87</b>
<b>Grand Total:</b>					<b>87,144.87</b>



# Expense Approval Report

By Fund

Post Dates 12/20/2016 - 12/20/2016

Vendor Name	Payable Number	Post Date	Description (Item)	Account Number	Amount
<b>Fund: 10 - GENERAL FUND</b>					
REJIS COMMISSION	INV0051399	12/20/2016	LEWEB SUBSCRIPTION	10-223-000-43401	643.46
FILGER OIL CO.	14	12/20/2016	CAR WASHES/PUBLIC SAFETY	10-221-000-41000	495.00
FILGER OIL CO.	14	12/20/2016	CAR WASHES/PUBLIC WORKS	10-331-000-41000	32.50
FILGER OIL CO.	14	12/20/2016	CAR WASHES/COMMUNITY D	10-819-000-41000	115.50
ENET, LLC	4813	12/20/2016	SERVICE/SUPPORT	10-224-000-40500	3,116.55
ENET, LLC	4813	12/20/2016	SERVICE/SUPPORT	10-224-000-40709	3,116.55
MSHP CJ TECH, FUND	812HP73102160C	12/20/2016	MULES CIRCUIT CHARGES - 4T	10-223-000-43401	780.00
GALLAGHER BENEFIT SERVICE	104824	12/20/2016	COMPENSATION STUDY & DR	10-112-000-21300	11,862.50
STANLEY STEEMER	12661020	12/20/2016	CARPET CLEANING/COMMUN	10-337-103-41500	150.00
DAMON PURSELL	203583	12/20/2016	YARD WASTE DISPOSAL	10-331-000-26100	274.00
P1 GROUP, INC	000013933	12/20/2016	CHECK BUNK ROOM MIXING	10-337-103-41500	361.25
WCA WASTE CORPORATION	099-0000178547	12/20/2016	DISPOSAL SERVICE/PUBLIC W	10-331-000-26000	1,310.00
LOOMIS	11926657	12/20/2016	COURIER SERVICE	10-112-000-43800	77.58
OFFICE DEPOT	7396326	12/20/2016	879375923-001	10-112-000-50500	69.49
OFFICE DEPOT	7396326	12/20/2016	877013373-001	10-112-000-50500	79.25
EMBASSY LANDSCAPE GROUP	81884	12/20/2016	ADDITIONAL FALL MOWING	10-331-000-21304	1,850.00
CARD SERVICES	0023 12/16	12/20/2016	MI RANCHITO - COMMAND M	10-221-000-36200	32.45
CARD SERVICES	0023 12/16	12/20/2016	LOWES - L3 EQUIP	10-221-000-44512	24.99
CARD SERVICES	0023 12/16	12/20/2016	HYVEE - COFFEE/PATROL	10-221-000-44512	35.19
CARD SERVICES	0023 12/16	12/20/2016	VERIZON - MCMULLIN	10-224-000-27200	35.00
CARD SERVICES	0023 12/16	12/20/2016	UPS - L3 SHIPPING	10-224-000-51500	11.45
CARD SERVICES	0025 12/16	12/20/2016	INT'L ASSOC FIRE - DUES	10-226-000-34500	334.00
CARD SERVICES	0025 12/16	12/20/2016	REG JUSTICE - GA NET	10-226-000-34506	15.00
CARD SERVICES	0025 12/16	12/20/2016	MACPP - MEMBERSHIP	10-226-000-34511	50.00
CARD SERVICES	0025 12/16	12/20/2016	AT&T - FOWLSTON	10-226-000-34511	30.00
CARD SERVICES	0025 12/16	12/20/2016	ADVANCE AUTO - VEH LIGHTS	10-226-000-40000	7.98
CARD SERVICES	0025 12/16	12/20/2016	CHUX TRUX - VEH 800	10-226-000-40000	260.00
CARD SERVICES	0025 12/16	12/20/2016	CHUX TRUX -UNIT 800 REPAIR	10-226-000-40001	400.00
CARD SERVICES	0025 12/16	12/20/2016	EMERGENCY REPORTING - R	10-226-000-40501	304.58
CARD SERVICES	0025 12/16	12/20/2016	RIVERSIDE CAR WASH - VEH 8	10-226-000-41000	10.00
CARD SERVICES	0025 12/16	12/20/2016	WESTERN FIRE - A/C POSITIO	10-226-000-53720	530.00
CARD SERVICES	0058 12/16	12/20/2016	PLATTE CO - PCEDC MTG	10-112-000-22910	300.00
CARD SERVICES	0058 12/16	12/20/2016	NLAND REG - NRCC MTG	10-112-000-22910	50.00
CARD SERVICES	0058 12/16	12/20/2016	NLAND REG - NRCC DUES	10-112-000-22910	4,945.00
CARD SERVICES	0058 12/16	12/20/2016	AT&T - ROSE	10-112-000-27201	30.00
CARD SERVICES	0058 12/16	12/20/2016	AT&T - BOWMAN	10-112-000-27201	14.99
CARD SERVICES	0058 12/16	12/20/2016	AT&T - BIONDO	10-112-000-27201	14.99
CARD SERVICES	0058 12/16	12/20/2016	AT&T - KINCAID	10-112-000-27201	14.99
CARD SERVICES	0058 12/16	12/20/2016	AT&T - SUPER	10-112-000-27201	14.99
CARD SERVICES	0058 12/16	12/20/2016	AT&T - HOMER	10-112-000-27201	14.99
CARD SERVICES	0058 12/16	12/20/2016	AT&T - OLIVER	10-112-000-27201	14.99
CARD SERVICES	0058 12/16	12/20/2016	HEN HOUSE - BOA MTG	10-112-000-53900	28.98
CARD SERVICES	0058 12/16	12/20/2016	MO DMV - 2017 TRK	10-226-000-41000	41.50
CARD SERVICES	0058 12/16	12/20/2016	REED BUICK - MAINT	10-331-000-41000	167.40
CARD SERVICES	0058 12/16	12/20/2016	MO DMV - 2017 TRK	10-331-000-41000	12.25
CARD SERVICES	0064 12/16	12/20/2016	AT&T - MILLS	10-112-000-27201	14.99
CARD SERVICES	0064 12/16	12/20/2016	RED DRAGON - DEPT HEAD M	10-112-000-36100	42.16
CARD SERVICES	0066 12/16	12/20/2016	AT&T - DUFFY	10-819-000-27200	14.99
CARD SERVICES	0082 12/16	12/20/2016	LEXIS NEXIS - CIU SEARCH EN	10-221-000-34506	76.50
CARD SERVICES	0082 12/16	12/20/2016	CDW GOV - PHONE HOLSTERS	10-221-000-44511	33.10
CARD SERVICES	0082 12/16	12/20/2016	CDW GOV - CREDIT	10-221-000-44511	-23.92
CARD SERVICES	0082 12/16	12/20/2016	AIR SOFT MEGA - PISTOL MA	10-221-000-53047	333.10
CARD SERVICES	0106 12/16	12/20/2016	GALLS - UNIFORM	10-221-000-56000	183.97



## Expense Approval Report

Post Dates: 12/20/2016 - 12/20/2016

Vendor Name	Payable Number	Post Date	Description (Item)	Account Number	Amount
CARD SERVICES	0108 12/16	12/20/2016	PANERA BREAD - SUPERVISOR	10-221-000-36200	16.56
CARD SERVICES	0108 12/16	12/20/2016	TACTICAL.COM - UNIFORMS	10-221-000-56000	113.09
CARD SERVICES	0108 12/16	12/20/2016	AT&T DATA - I PAD	10-224-000-27200	30.00
CARD SERVICES	0122 12/16	12/20/2016	MCGUIRE LOCK - CREDIT	10-223-000-40000	-512.81
CARD SERVICES	0122 12/16	12/20/2016	MCGUIRE LOCK - 10 LOCK	10-223-000-40000	480.00
CARD SERVICES	0122 12/16	12/20/2016	MCGUIRE LOCK - 10 LOCK	10-223-000-40000	512.81
CARD SERVICES	0122 12/16	12/20/2016	GALLS - UNIFORM	10-223-000-56000	195.22
CARD SERVICES	0124 12/16	12/20/2016	CASEY'S GEN STORE/DISPATC	10-223-000-36200	25.92
CARD SERVICES	0130 12/16	12/20/2016	AMERICAN EQUIP - SPREAD	10-331-000-40000	159.84
CARD SERVICES	0130 12/16	12/20/2016	FASTENAL - SCREWS	10-331-000-58500	1.17
CARD SERVICES	0130 12/16	12/20/2016	FASTENAL - BOLTS	10-331-000-58500	6.00
CARD SERVICES	0130 12/16	12/20/2016	LOWES - CORD FOR DECOR	10-331-000-58500	17.97
CARD SERVICES	0130 12/16	12/20/2016	KC POND - DYE FOR WATERFA	10-336-112-42100	79.90
CARD SERVICES	0132 12/16	12/20/2016	ARGOSY - PLCO MTG	10-221-000-36200	12.75
CARD SERVICES	0132 12/16	12/20/2016	MI RANCHITO - COMM MTG	10-221-000-36200	32.23
CARD SERVICES	0132 12/16	12/20/2016	NTOWNE LINCOLN - VEH MAI	10-221-000-41000	72.63
CARD SERVICES	0132 12/16	12/20/2016	ADAM'S POLISHES - VEH CLEA	10-221-000-41000	166.53
CARD SERVICES	0132 12/16	12/20/2016	AT&T - SKINROOD	10-224-000-27200	30.00
CARD SERVICES	0132 12/16	12/20/2016	ALWARE BYTES - COMPUTER	10-224-000-40500	24.95
CARD SERVICES	0132 12/16	12/20/2016	MARLOW WHITE - UNIFORM	10-224-000-56000	70.00
CARD SERVICES	0140 12/16	12/20/2016	NETSOLUS - CITY PHONE SYST	10-112-000-27000	75.00
CARD SERVICES	0140 12/16	12/20/2016	OFFICE MAX - CITY PHONE SY	10-112-000-27000	199.99
CARD SERVICES	0140 12/16	12/20/2016	EFAX - JUDGE FERGUSON	10-216-000-21301	16.95
CARD SERVICES	0140 12/16	12/20/2016	PAYLESS - DISPATCH SUPPLIES	10-223-000-53700	68.05
CARD SERVICES	0140 12/16	12/20/2016	SHACKELFORD - STEWART/GE	10-224-000-22900	58.81
CARD SERVICES	0140 12/16	12/20/2016	SHACKELFORD - WESTRICH/F	10-224-000-22900	85.00
CARD SERVICES	0140 12/16	12/20/2016	SHACKELFORD - STARBUCK/G	10-224-000-22900	65.00
CARD SERVICES	0140 12/16	12/20/2016	SHACKELFORD - MENDOZA'S	10-224-000-22900	60.00
CARD SERVICES	0140 12/16	12/20/2016	SHACKELFORD - MCDANIEL/G	10-224-000-22900	75.09
CARD SERVICES	0140 12/16	12/20/2016	SHACKELFORD - CREDIT	10-224-000-22900	-5.09
CARD SERVICES	0140 12/16	12/20/2016	SHACKELFORD - JOHN CAMER	10-224-000-22900	65.00
CARD SERVICES	0140 12/16	12/20/2016	AT&T - PHILLIPS	10-224-000-27200	14.99
CARD SERVICES	0140 12/16	12/20/2016	POLICE EXECUTIVE - MILLS DU	10-224-000-34500	200.00
CARD SERVICES	0140 12/16	12/20/2016	PAYLESS - SUPPLIES	10-224-000-50500	56.70
CARD SERVICES	0140 12/16	12/20/2016	PAYLESS - ENVELOPES	10-224-000-50500	88.00
CARD SERVICES	0171 12/16	12/20/2016	LOWES - TRK 88	10-331-000-40000	16.96
CARD SERVICES	0171 12/16	12/20/2016	HOME DEPOT - LIGHT WORK	10-331-000-41601	79.32
CARD SERVICES	0171 12/16	12/20/2016	LOWES - WATERFALL REPAIR	10-336-112-42100	49.20
CARD SERVICES	0171 12/16	12/20/2016	LOWES - WATERFALL REPAIR	10-336-112-42100	38.40
CARD SERVICES	0171 12/16	12/20/2016	HOME DEPOT - WATERFALL R	10-336-112-42100	113.46
CARD SERVICES	0171 12/16	12/20/2016	AMERICAN - LAMP BALLAST	10-337-102-41500	65.23
CARD SERVICES	0171 12/16	12/20/2016	LOWES - LIGHT WORK	10-337-103-41500	86.88
CARD SERVICES	0197 12/16	12/20/2016	HYVEE - EMPLOYEE APPRECI	10-115-000-21302	60.00
CARD SERVICES	0197 12/16	12/20/2016	CORNER CAFE - ANNUAL PAR	10-115-000-31200	100.00
CARD SERVICES	0197 12/16	12/20/2016	ZONA ROSA - HOLIDAY DINNE	10-115-000-31200	216.00
CARD SERVICES	0197 12/16	12/20/2016	RED X - ANNUAL PARTY	10-115-000-31200	375.00
CARD SERVICES	0197 12/16	12/20/2016	RED X - ANNUAL PARTY	10-115-000-31200	654.74
CARD SERVICES	0197 12/16	12/20/2016	MAGNOLIA - CREDIT	10-341-000-36000	-234.68
CARD SERVICES	0197 12/16	12/20/2016	OFFICE MAX - SUPPLIES	10-341-000-50500	46.63
CARD SERVICES	0197 12/16	12/20/2016	USPS - POSTAGE	10-341-000-51500	65.80
CARD SERVICES	0197 12/16	12/20/2016	AMAZON - UNIFORM	10-341-000-56000	101.48
CARD SERVICES	0197 12/16	12/20/2016	FAMOUS FOOTWEAR - UNIFO	10-341-000-56000	114.73
CARD SERVICES	0197 12/16	12/20/2016	ZONA ROSA - HOLIDAY LIGHTI	10-341-100-44400	252.00
CARD SERVICES	0197 12/16	12/20/2016	SAM'S - SPECIAL EVENTS	10-341-100-44400	191.86
CARD SERVICES	0197 12/16	12/20/2016	PAPA MURPHY'S - ELECTION	10-341-100-44522	54.24
CARD SERVICES	0197 12/16	12/20/2016	SCRUMPTIOUS - LUNCH/LEAR	10-341-100-44522	215.00
CARD SERVICES	0205 12/16	12/20/2016	RED X - THANKSGIVING CRE	10-226-000-22900	17.39
CARD SERVICES	0205 12/16	12/20/2016	HYVEE - THANKSGIVING CRE	10-226-000-22900	68.18
CARD SERVICES	0213 12/16	12/20/2016	FASTENAL - DECORATIONS	10-331-000-58500	56.97
CARD SERVICES	0221 12/16	12/20/2016	FASTENAL - DECORATIONS	10-331-000-58500	33.31

## Expense Approval Report

Post Dates: 12/20/2016 - 12/20/2016

Vendor Name	Payable Number	Post Date	Description (Item)	Account Number	Amount
CARD SERVICES	0221 12/16	12/20/2016	REEVE - EH REPAIR	10-336-107-42100	194.20
CARD SERVICES	0221 12/16	12/20/2016	LOWES - RB BATHROOM WIN	10-336-108-42100	28.38
CARD SERVICES	0247 12/16	12/20/2016	RIVERSIDE CHAMBER - ADMI	10-112-000-36100	140.00
CARD SERVICES	0247 12/16	12/20/2016	SELECT YOUR GIFT - YRS OF S	10-115-000-31200	653.34
CARD SERVICES	0247 12/16	12/20/2016	SUPPLY OUTLET - COURT PRI	10-216-000-50500	11.97
CARD SERVICES	0247 12/16	12/20/2016	RIVERSIDE CHAMBER - PS AD	10-224-000-22900	20.00
TYLER TECHNOLOGIES, INC	025-174227	12/20/2016	MAINTENANCE/CASH COLLEC	10-112-000-40700	13,245.88
TYLER TECHNOLOGIES, INC	025-174227	12/20/2016	MAINTENANCE/CASH COLLEC	10-216-000-40700	5,779.83
CARD SERVICES	0254 12/16	12/20/2016	LOWES - TRK 92	10-331-000-40000	49.90
CARD SERVICES	0254 12/16	12/20/2016	KEY EQUIP - SWEEPER BELT	10-331-000-40000	324.50
CARD SERVICES	0254 12/16	12/20/2016	CARQUEST - U JOINT FOR MO	10-331-000-40000	26.49
CARD SERVICES	0254 12/16	12/20/2016	FASTENAL - DECORATIONS	10-331-000-58500	8.79
CARD SERVICES	0254 12/16	12/20/2016	REEVES - WATERFALL REPAIR	10-336-112-42100	20.53
CARD SERVICES	0254 12/16	12/20/2016	HOME DEPOT - WATERFALL R	10-336-112-42100	67.70
CARD SERVICES	0254 12/16	12/20/2016	LOWES - TREE OUTLET	10-337-102-41500	11.98
CARD SERVICES	0254 12/16	12/20/2016	AMERICAN - LED BULBS	10-337-102-41500	183.65
CARD SERVICES	0254 12/16	12/20/2016	AMERICAN - LIGHT COVER	10-337-102-41500	562.69
CARD SERVICES	0254 12/16	12/20/2016	WESTERN EXTRALITE - BALLAS	10-337-104-41500	142.78
CARD SERVICES	0262 12/16	12/20/2016	TECH SERVICE - GAS CALIBRA	10-226-000-40000	480.95
CARD SERVICES	0262 12/16	12/20/2016	ADVANCE AUTO - OIL/ANTI F	10-226-000-40000	101.91
CARD SERVICES	0262 12/16	12/20/2016	MEDASSURE - MED WASTE	10-226-000-44504	38.24
CARD SERVICES	0262 12/16	12/20/2016	BOUND TREE - EMS EQUIP	10-226-000-53707	152.87
CARD SERVICES	0262 12/16	12/20/2016	MOORE MED - BP CUFF	10-226-000-53707	11.98
CARD SERVICES	0270 12/16	12/20/2016	FASTENAL - BATTERIES	10-226-000-40000	49.59
CARD SERVICES	0270 12/16	12/20/2016	HOME DEPOT - CAPS	10-226-000-53720	2.94
CARD SERVICES	0270 12/16	12/20/2016	PRICE CHOPPER - PROPANE	10-226-000-53720	39.98
CARD SERVICES	0270 12/16	12/20/2016	AMAZON - CAPS	10-226-000-53720	15.09
CARD SERVICES	0270 12/16	12/20/2016	PAYPAL - SHIFT CALENDAR	10-226-000-53720	105.85
CARD SERVICES	0270 12/16	12/20/2016	BIG LOTS - COFFEE	10-226-000-53720	16.50
CARD SERVICES	0312 12/16	12/20/2016	AMERICAN EQUIP - SPREADE	10-331-000-40000	14.70
CARD SERVICES	0338 12/16	12/20/2016	HOME DEPOT - RETURN	10-226-000-53720	-3.96
CARD SERVICES	0338 12/16	12/20/2016	HOME DEPOT - MOLD TEST KI	10-226-000-53720	41.89
CARD SERVICES	0338 12/16	12/20/2016	HYVEE - THANKSGIVING DINN	10-226-000-53720	203.91
CARD SERVICES	0379 12/16	12/20/2016	RED X - VEH MAINT	10-221-000-41000	7.99
CARD SERVICES	0379 12/16	12/20/2016	RED X - VEH MAINT	10-221-000-41000	7.99
CARD SERVICES	0387 12/16	12/20/2016	LA POLICE - UNIFORM	10-221-000-56000	30.62
SHEILA L PALMER, COLLECTO	05000000066000 16	12/20/2016	23-3.0-05-000-000-066.000	10-14000	19,231.06
SHEILA L PALMER, COLLECTO	060000000093000 16	12/20/2016	23-3.0-06-000-000-093.000	10-14000	16,703.16
SHEILA L PALMER, COLLECTO	060000000112000 16	12/20/2016	23-3.0-06-000-000-112.000	10-14000	21,266.91
SHEILA L PALMER, COLLECTO	060000000113000 16	12/20/2016	23-3.0-06-000-000-113.000	10-14000	401,185.98
SHEILA L PALMER, COLLECTO	060000000115000 16	12/20/2016	23-3.0-06-000-000-115.000	10-14000	430,835.65
WCA WASTE CORPORATION	099-0000187284	12/20/2016	DISPOSAL SERVICE	10-331-000-26000	4,560.63
CARD SERVICES	1088 12/16	12/20/2016	AT&T - WAGNER	10-819-000-27200	30.00
CARD SERVICES	1245 12/16	12/20/2016	AT&T - SHELTON	10-226-000-34506	14.99
CARD SERVICES	1245 12/16	12/20/2016	ADVANCE AUTO - VEH 804	10-226-000-40000	58.98
CARD SERVICES	1245 12/16	12/20/2016	NKC AUTO - SEAT REPAIR	10-226-000-40001	68.00
CARD SERVICES	1252 12/16	12/20/2016	LA POLICE GEAR - SHIRTS	10-223-000-56000	119.97
CARD SERVICES	1252 12/16	12/20/2016	RED X - SENIOR DINNER	10-224-000-22901	271.66
CARD SERVICES	1286 12/16	12/20/2016	DUNKIN DONUTS/MEAL	10-226-000-36006	9.20
CARD SERVICES	1286 12/16	12/20/2016	GUEST SERVICES - MEAL TICK	10-226-000-36006	164.50
CARD SERVICES	1286 12/16	12/20/2016	RIVERSIDE CAR WASH	10-226-000-40000	10.00
CARD SERVICES	1286 12/16	12/20/2016	EBAY - AUXILIARY HEATER	10-226-000-40000	164.95
MOPERM	130718	12/20/2016	AUTO PHYSICAL DAMAGE,LIA	10-112-000-24100	92,223.00
CARD SERVICES	1393 12/16	12/20/2016	AT&T - WOODDELL	10-331-000-27200	14.99
CARD SERVICES	1393 12/16	12/20/2016	AMERICAN PW - WOODDELL/	10-331-000-36400	355.00
CARD SERVICES	1393 12/16	12/20/2016	AMERICAN PW - HOOVER	10-332-000-34500	155.00
CARD SERVICES	1443 12/16	12/20/2016	CHEWY - DOG FOOD	10-221-000-44505	52.23
CARD SERVICES	1450 12/16	12/20/2016	GALLS - UNIFORM	10-221-000-56000	260.00
CARD SERVICES	1526 12/16	12/20/2016	AT&T - BUESCHER	10-331-000-27200	14.99
CARD SERVICES	1526 12/16	12/20/2016	Q4 - JANITOR SUPPLIES	10-331-000-51011	197.80

## Expense Approval Report

Post Dates: 12/20/2016 - 12/20/2016

Vendor Name	Payable Number	Post Date	Description (Item)	Account Number	Amount
CARD SERVICES	1526 12/16	12/20/2016	Q4 - JANITOR SUPPLIES	10-331-000-51011	726.19
CARD SERVICES	1526 12/16	12/20/2016	CINTAS - FIRST AID	10-331-000-52200	170.49
CARD SERVICES	1526 12/16	12/20/2016	DISPUTE CHARGES - CREDIT	10-331-000-53700	-1,996.95
CARD SERVICES	1526 12/16	12/20/2016	DISPUTE CHARGES	10-331-000-53700	1,954.26
CARD SERVICES	1526 12/16	12/20/2016	AMAZON - CREDIT	10-331-000-53700	-99.00
CARD SERVICES	1526 12/16	12/20/2016	METRO ROLLOFF - MRT	10-336-000-42000	85.00
CARD SERVICES	1526 12/16	12/20/2016	METRO ROLLOFF - EH YOUNG	10-336-107-42100	85.00
CARD SERVICES	1526 12/16	12/20/2016	WOODARD WELDING - FENCE	10-336-107-42100	500.00
CARD SERVICES	1526 12/16	12/20/2016	METRO ROLLOFF - RENNER	10-336-108-42100	85.00
CARD SERVICES	1542 12/16	12/20/2016	ARROWHEAD - CSI SUPPLIES	10-221-000-44509	331.60
CARD SERVICES	1542 12/16	12/20/2016	PARTY CITY - CSI TRNG	10-221-000-44509	21.81
CARD SERVICES	1708 12/16	12/20/2016	CORNER CAFE - DWI METRO	10-221-000-36200	86.63
CARD SERVICES	1724 12/16	12/20/2016	UPS STORE/POSTAGE	10-224-000-51500	29.04
CARD SERVICES	1831 12/16	12/20/2016	AMERICAN AIR - NLOC CONF	10-102-000-36000	25.00
CARD SERVICES	1831 12/16	12/20/2016	RENAISSANCE HOTEL - NLOC	10-102-000-36000	663.48
CARD SERVICES	1914 12/16	12/20/2016	HYVEE - MISCHARGE	10-112-000-53900	192.38
CARD SERVICES	1914 12/16	12/20/2016	HYVEE - BOA MTG	10-112-000-53900	175.00
CARD SERVICES	1914 12/16	12/20/2016	SMOKIN GUNS - BOA MTG	10-112-000-53900	256.50
CARD SERVICES	1914 12/16	12/20/2016	HYVEE - CREDIT	10-112-000-53900	-192.38
CARD SERVICES	1963 12/16	12/20/2016	DELTA AIR - NAT'L LEAGUE RO	10-102-000-36000	15.00
CARD SERVICES	1963 12/16	12/20/2016	DELTA AIR - NAT'L LEAGUE RO	10-102-000-36000	25.00
CARD SERVICES	1963 12/16	12/20/2016	SUPERSHUTTLE - NAT'L LEAG	10-102-000-36000	28.32
CARD SERVICES	1963 12/16	12/20/2016	AT&T - RASCO	10-112-000-27201	30.00
CARD SERVICES	1963 12/16	12/20/2016	ADOBE - SUBSCRIPTION	10-112-000-34000	49.99
CARD SERVICES	1963 12/16	12/20/2016	FIRST WATCH - BETTERMENT	10-112-000-36100	23.66
LAURA JEANNE LYNCH	2016-68	12/20/2016	NEWSLETTER/EDITORIAL,WRI	10-112-000-21300	2,000.00
HEARTLAND OCCUPATIONAL	27282	12/20/2016	DRUG SCREENS, PHYSICAL	10-115-000-30800	1,124.50
HEARTLAND OCCUPATIONAL	27283	12/20/2016	FLU VACCINATIONS	10-20505	70.00
HEARTLAND OCCUPATIONAL	27762	12/20/2016	FUE VACCINATIONS	10-20505	855.00
TOWN & COUNTRY BUILDING	7464	12/20/2016	JANITORIAL SERVICE	10-337-103-44200	1,620.00
TOWN & COUNTRY BUILDING	7466	12/20/2016	JANITORIAL SERVICE	10-337-104-44203	655.00
EMBASSY LANDSCAPE GROUP	81743	12/20/2016	GROUNDS MAINTENANCE	10-331-000-21304	4,649.00
EMBASSY LANDSCAPE GROUP	81837	12/20/2016	GROUNDS MAINTENANCE-DE	10-331-000-21304	645.00
BD OF POLICE COMMISSIONE	9969	12/20/2016	LAB USAGE	10-221-000-44514	69.00
ALL COPY PRODUCTS, INC	AR1973913	12/20/2016	COPIER USAGE	10-112-000-32300	322.96
ALL COPY PRODUCTS, INC	AR1973914	12/20/2016	COPIER USAGE	10-112-000-32300	259.83
ALL COPY PRODUCTS, INC	AR1975554	12/20/2016	COPIER USAGE	10-224-000-32300	167.90
NORTH KANSAS CITY AUTO T	11571	12/20/2016	INSERT CUSHION	10-221-000-41000	85.00
FERRELLGAS	1094316566	12/20/2016	PROPANE/RADIO TOWER	10-337-117-54000	793.39
SPENCER FANE BRITT & BRO	575243	12/20/2016	RED X - NOV	10-112-000-20300	1,500.00
MSEC FINANCIAL SERVICES	19811319	12/20/2016	FRANCOTYP POSTALIA POSTB	10-112-000-51500	125.00
ABBY G PENNELL, ATTORNEY	40	12/20/2016	INDIGENT LEGAL SERVICES	10-216-000-21301	2,100.00
MR MAT	531450	12/20/2016	ENTRY MATS	10-337-101-41500	24.86
MR MAT	531451	12/20/2016	ENTRY MATS	10-337-103-41500	30.74
MR MAT	531452	12/20/2016	ENTRY MATS	10-337-102-41500	30.48
MOPERM	131219	12/20/2016	AUTO PHY DAMAGE, LIABILIT	10-112-000-24100	1,148.00
NORTH KANSAS CITY AUTO T	11549	12/20/2016	INSERT AND PAD CUSHION	10-221-000-41000	160.00
KELLER FIRE AND SAFETY	175419	12/20/2016	FIRE SUPPRESSION SYS MANT	10-337-104-41500	225.00
SIGNATURE LANDSCAPE, INC	204944	12/20/2016	WINTERIZE IRRIGATION SYSTE	10-336-113-42100	330.00
SIGNATURE LANDSCAPE, INC	204945	12/20/2016	WINTERIZE IRRIGATION SYSTE	10-336-113-42100	365.00
INFORMATION FUND	52337	12/20/2016	MONTHLY SALES, USE TAX RE	10-112-000-40700	105.00
MR MAT	531215	12/20/2016	ENTRY MATS	10-337-101-41500	24.86
MR MAT	531216	12/20/2016	ENTRY MATS	10-337-102-41500	30.48
MR MAT	531217	12/20/2016	ENTRY MATS	10-337-103-41500	30.77
WILLIAMS & CAMPO, P.C.	7801	12/20/2016	LEGAL SERVICES	10-112-000-20300	2,783.15
KIESO, KIP	12/08/16	12/20/2016	PRE-EMPLOYMENT EXAM/HA	10-115-000-30800	150.00
LANDMARK NEWSPAPER, THE	23957	12/20/2016	NOTICE OF ELECTION	10-112-000-32700	78.70
KC WIRELESS INC	49298	12/20/2016	FUSE HOLDER, TIMER, FUSE	10-221-000-41000	169.71
EMBASSY LANDSCAPE GROUP	78069	12/20/2016	FLOWER REPLACEMENT	10-331-000-21304	205.00

Fund 10 - GENERAL FUND Total: 1,075,215.23

## Expense Approval Report

Post Dates: 12/20/2016 - 12/20/2016

Vendor Name	Payable Number	Post Date	Description (Item)	Account Number	Amount
<b>Fund: 21 - CAPITAL IMPROVEMENTS FUND</b>					
MIDWEST PROFESSIONAL UTI	16-0104-01	12/20/2016	DITCH DRAINAGE PROJECT/P	21-025-000-53000	125.00
MCCONNELL & ASSOCIATES	102580	12/20/2016	STAR DF 3405 HOT POUR/CRE	21-025-000-53000	-1,026.00
MCCONNELL & ASSOCIATES	102581	12/20/2016	DF PROSTRETCH HOT POUR	21-025-000-53000	1,176.00
ED M FELD EQUIPMENT CO, I	0303869-IN	12/20/2016	FIT TESTING OF MASKS	21-058-000-75100	665.00
MCCONNELL & ASSOCIATES	102582	12/20/2016	STAR PLS HOT POUR, DIRECT	21-025-000-53000	927.00
MCCONNELL & ASSOCIATES	102579	12/20/2016	STAR PL HOT POUR	21-025-000-53000	1,344.00
FIRELAKE CONSTRUCTION, IN	1	12/20/2016	BUILDING IMPROVEMENTS	21-039-000-53000	40,270.00
ED M FELD EQUIPMENT CO, I	0303578-IN	12/20/2016	AIR-PAKS/BOA APPROVED	21-058-000-75100	221,328.55
CARD SERVICES	0213 12/16	12/20/2016	MCCONNELL - CRACK SEAL	21-025-000-53000	1,560.30
EROSION SPECIALISTS, LLC	2972	12/20/2016	HYDRO SEEDING	21-025-000-53000	848.75
HOUSTON EXCAVATING	149	12/20/2016	FILL DIRT HORIZON'S SOUTH	21-020-000-54000	7,330.00
SPENCER FANE BRITT & BRO	575232	12/20/2016	IRRIGATION - NOV	21-020-120-51000	3,884.00
SPENCER FANE BRITT & BRO	575233	12/20/2016	LEVEE REFUNDING - NOV	21-020-000-51007	5,965.00
SPENCER FANE BRITT & BRO	575234	12/20/2016	HORIZONS - NOV	21-020-000-51007	75.00
SPENCER FANE BRITT & BRO	575235	12/20/2016	ECONOMIC DEVELOPMENT -	21-020-000-51007	1,312.50
SPENCER FANE BRITT & BRO	575236	12/20/2016	LANDSCAPE - NOV	21-020-120-51000	187.50
SPENCER FANE BRITT & BRO	575237	12/20/2016	MDA - NOV	21-020-000-51007	3,562.50
SPENCER FANE BRITT & BRO	575239	12/20/2016	RINKER - NOV	21-020-000-51007	1,075.00
SPENCER FANE BRITT & BRO	575240	12/20/2016	POND LINER - NOV	21-020-120-51000	187.50
SPENCER FANE BRITT & BRO	575241	12/20/2016	VAN TRUST - NOV	21-020-000-51007	2,625.00
SPENCER FANE BRITT & BRO	575242	12/20/2016	HORIZONS VI - NOV	21-020-000-51007	13,092.00
HOUSTON EXCAVATING	148	12/20/2016	HORIZON'S PARKWAY/FILL DI	21-020-000-54000	4,000.00
MIDWEST PROFESSIONAL UTI	16-0222-03	12/20/2016	COMMUNITY CENTER/PRIVAT	21-025-000-53000	125.00
<b>Fund 21 - CAPITAL IMPROVEMENTS FUND Total:</b>					<b>310,639.60</b>
<b>Fund: 30 - CAPITAL EQUIPMENT FUND</b>					
KC WIRELESS INC	49254	12/20/2016	FUSE, FUSE HOLDER	30-112-000-62000	214.96
KC WIRELESS INC	49255	12/20/2016	BLADE FUSE, CONNECTER, INS	30-112-000-62000	249.06
CARD SERVICES	0025 12/16	12/20/2016	CHUX TRUX - VEH SHELL	30-226-000-60000	4,980.00
KC WIRELESS INC	49270	12/20/2016	REMOVE OLD COMPUTER SYS	30-112-000-62000	223.42
KC WIRELESS INC	49271	12/20/2016	REMOVED OLD COMPUTER S	30-112-000-62000	210.00
ENET, LLC	4820	12/20/2016	APPLE I PAD,CASE, MS OFFICE	30-112-000-62000	1,059.64
KC WIRELESS INC	49294	12/20/2016	REMOVED & INSTALLED COM	30-112-000-62000	210.00
<b>Fund 30 - CAPITAL EQUIPMENT FUND Total:</b>					<b>7,147.08</b>
<b>Fund: 40 - TIF/LEVEE/RESERVE FUND</b>					
SHEILA L PALMER, COLLECTO	04100006034000 16	12/20/2016	23-2.0-04-100-006-034.000	40-111-000-79500	1,474.19
SHEILA L PALMER, COLLECTO	04300001007000 16	12/20/2016	23-2.0-04-300-001-007.000	40-111-000-79500	315.35
SHEILA L PALMER, COLLECTO	04300003011000 16	12/20/2016	23-2.0-04-300-003-011.000	40-111-000-79500	2,640.00
SHEILA L PALMER, COLLECTO	04300003012000 16	12/20/2016	23-2.0-04-300-003-012.000	40-111-000-79500	1,338.31
SHEILA L PALMER, COLLECTO	04300003013000 16	12/20/2016	23-2.0-04-300-003-013.000	40-111-000-79500	1,635.70
SHEILA L PALMER, COLLECTO	04300004005000 16	12/20/2016	23-30-04-300-004-005.000	40-111-000-79500	1,281.90
SHEILA L PALMER, COLLECTO	04300006001000 16	12/20/2016	23-2.0-04-300-006-001.000	40-111-000-79500	1,542.13
SHEILA L PALMER, COLLECTO	04400005003000 16	12/20/2016	23-2.0-04-400-005-003.000	40-111-000-79500	198.70
SHEILA L PALMER, COLLECTO	04400006005001 16	12/20/2016	23-2.0-04-400-006-005.001	40-111-000-79500	545.45
SHEILA L PALMER, COLLECTO	04400006006000 16	12/20/2016	23-2.0-04-400-006-006.000	40-111-000-79500	3,408.57
SHEILA L PALMER, COLLECTO	04400006010000 16	12/20/2016	23-2.0-04-400-006-010.000	40-111-000-79500	457.64
SHEILA L PALMER, COLLECTO	04400007004000 16	12/20/2016	23-2.0-04-400-007-004.000	40-111-000-79500	654.47
SHEILA L PALMER, COLLECTO	04400007005000 16	12/20/2016	23-2.0-04-400-007-005.000	40-111-000-79500	339.70
SHEILA L PALMER, COLLECTO	05000000041000 16	12/20/2016	23-3.0-05-000-000-041.000	40-111-000-79500	26,495.71
SHEILA L PALMER, COLLECTO	05000000041002 16	12/20/2016	23-3.0-05-000-000-041.002	40-111-000-79500	6,623.93
SHEILA L PALMER, COLLECTO	05000000049000 16	12/20/2016	23-3.0-05-000-000-049.000	40-111-000-79500	3,817.50
SHEILA L PALMER, COLLECTO	05000000060000 16	12/20/2016	23-3.0-05-000-000-060.000	40-111-000-79500	4,304.63
SHEILA L PALMER, COLLECTO	05000000061000 16	12/20/2016	23-3.0-05-000-000-061.000	40-111-000-79500	4,528.95
SHEILA L PALMER, COLLECTO	05000000067000 16	12/20/2016	23-3.0-05-000-000-067.000	40-111-000-79500	4,517.42
SHEILA L PALMER, COLLECTO	06000000107000 16	12/20/2016	23-3.0-06-000-000-107.000	40-111-000-79500	405.08
SHEILA L PALMER, COLLECTO	07000000003000 16	12/20/2016	23-3.0-07-000-000-003.000	40-111-000-79500	11,549.20
SHEILA L PALMER, COLLECTO	07000000004000 16	12/20/2016	23-3.0-07-000-000-004.000	40-111-000-79500	4,589.20
SHEILA L PALMER, COLLECTO	07000000005000 16	12/20/2016	23-3.0-07-000-000-005.000	40-111-000-79500	10,712.85
SHEILA L PALMER, COLLECTO	07000000006000 16	12/20/2016	23-3.0-07-000-000-006.000	40-111-000-79500	10,191.10
SHEILA L PALMER, COLLECTO	07000000006001 16	12/20/2016	23-3.0-07-000-000-006.001	40-111-000-79500	1,495.97

## Expense Approval Report

Post Dates: 12/20/2016 - 12/20/2016

Vendor Name	Payable Number	Post Date	Description (Item)	Account Number	Amount
SHEILA L PALMER, COLLECTO	07000000007000 16	12/20/2016	23-3.0-07-000-000-007.000	40-111-000-79500	3,895.69
SHEILA L PALMER, COLLECTO	07000000008000 16	12/20/2016	23-3.0-07-000-000-008.000	40-111-000-79500	3,895.69
SHEILA L PALMER, COLLECTO	07000000009000 16	12/20/2016	23+3.0-07-000-000-009.000	40-111-000-79500	38,631.93
SHEILA L PALMER, COLLECTO	07000000010000 16	12/20/2016	23-3.0-07-000-000-010.000	40-111-000-79500	30,957.18
SHEILA L PALMER, COLLECTO	07000000014000 16	12/20/2016	23-3.0-07-000-000-014.000	40-111-000-79500	13,716.33
SHEILA L PALMER, COLLECTO	07000000015000 16	12/20/2016	23-3.0-07-000-000-015.000	40-111-000-79500	21,909.52
SHEILA L PALMER, COLLECTO	07000000016000 16	12/20/2016	23-3.0-07-000-000-016.000	40-111-000-79500	15,064.89
SHEILA L PALMER, COLLECTO	07000000017000 16	12/20/2016	23-3.0-07-000-000-017.000	40-111-000-79500	20,418.68
SHEILA L PALMER, COLLECTO	07000000019000 16	12/20/2016	23-3.0-07-000-000-019.000	40-111-000-79500	9,033.53
SHEILA L PALMER, COLLECTO	08000000002000 16	12/20/2016	23-3.0-08-000-000-002.000	40-111-000-79500	2,687.14
SHEILA L PALMER, COLLECTO	08000000002001 16	12/20/2016	23-3.0-08-000-000-002.001	40-111-000-79500	2,571.49
SHEILA L PALMER, COLLECTO	08000000004000 16	12/20/2016	23-3.0-08-000-000-004.000	40-111-000-79500	5,004.54
SHEILA L PALMER, COLLECTO	08000000005000 16	12/20/2016	23-3.0-08-000-000-005.000	40-111-000-79500	36,253.99
SHEILA L PALMER, COLLECTO	08000000008000 16	12/20/2016	23-3.0-08-000-000-008.000	40-111-000-79500	9,550.15
SHEILA L PALMER, COLLECTO	08000000009000 16	12/20/2016	23-3.0-08-000-000-009.000	40-111-000-79500	7,400.40
SHEILA L PALMER, COLLECTO	08000000010000 16	12/20/2016	23-3.0-08-000-000-010.000	40-111-000-79500	6,112.10
SHEILA L PALMER, COLLECTO	08000000014000 16	12/20/2016	23-3.0-08-000-000-014.000	40-111-000-79500	13,303.56
SHEILA L PALMER, COLLECTO	08000000015000 16	12/20/2016	23-3.0-08-000-000-015.000	40-111-000-79500	65,439.84
SHEILA L PALMER, COLLECTO	08000000016000 16	12/20/2016	23-3.0-08-000-000-016.000	40-111-000-79500	14,929.01
SHEILA L PALMER, COLLECTO	08000000019000 16	12/20/2016	23-3.0-08-000-000-019.000	40-111-000-79500	44,273.96
SHEILA L PALMER, COLLECTO	09000000006000 16	12/20/2016	23-2.0-09-000-000-006.000	40-111-000-79500	1,084.46
SHEILA L PALMER, COLLECTO	09000000006001 16	12/20/2016	09-000-000-006001	40-111-000-79500	22,198.01
SHEILA L PALMER, COLLECTO	09000000006005 16	12/20/2016	23-2.0-09-000-000-006.005	40-111-000-79500	1,553.94
<b>Fund 40 - TIF/LEVEE/RESERVE FUND Total:</b>					<b>494,949.68</b>

**Fund: 50 - OFFICER TRAINING FUND**

CARD SERVICES	0041 12/16	12/20/2016	ODONOGHUES - FTO TRNG	50-221-000-31700	45.84
CARD SERVICES	0041 12/16	12/20/2016	PLAZA HOTEL - FTO TRNG	50-221-000-31700	295.32
CARD SERVICES	0041 12/16	12/20/2016	FUDRUCKERS - FTO TRNG	50-221-000-31700	13.55
CARD SERVICES	0041 12/16	12/20/2016	MADISONS CAFE - FTO TRNG	50-221-000-31700	38.61
CARD SERVICES	0163 12/16	12/20/2016	PLAZA HOTEL - TRAINING	50-221-000-31700	295.32
CARD SERVICES	0163 12/16	12/20/2016	PLAZA HOTEL - TRAINING	50-221-000-31700	21.32
CARD SERVICES	0163 12/16	12/20/2016	MAIN PIZZA - TRAINING	50-221-000-31700	37.61
CARD SERVICES	0163 12/16	12/20/2016	FUDDRUCKERS - TRAINING	50-221-000-31700	11.71
CARD SERVICES	0163 12/16	12/20/2016	MADISONS - TRAINING	50-221-000-31700	20.00
CARD SERVICES	0163 12/16	12/20/2016	O'DONOGUES STEAKS - TRAIN	50-221-000-31700	30.36
<b>Fund 50 - OFFICER TRAINING FUND Total:</b>					<b>809.64</b>

**Grand Total: 1,888,761.23**

**RESOLUTION R-2016-075**

**A RESOLUTION APPROVING AN AGREEMENT BETWEEN THE CITY AND WILLIAMS SPURGEON KUHL & FRESHNOCK ARCHITECTS, INC. FOR PUBLIC SAFETY SPACE NEEDS/FACILITY STUDY**

**BE IT RESOLVED BY THE BOARD OF ALDERMEN OF THE CITY OF RIVERSIDE, MISSOURI AS FOLLOWS**

**THAT** the proposal of Williams Spurgeon Kuhl & Freshnock Architects, Inc. for the City Public Safety Space Needs/Facility Study Project in the amount of \$40,000.00 is hereby accepted and approved; and

**FURTHER THAT** an agreement by and between the City of Riverside and Williams Spurgeon Kuhl & Freshnock Architects, Inc., in substantially the same form as attached hereto and incorporated herein by reference, is hereby authorized and approved, and the Mayor is authorized to sign on behalf of the City; and

**FURTHER THAT** the Mayor, the City Administrator, and other appropriate City officials are hereby authorized to take any and all actions as may be deemed necessary or convenient to carry out and comply with the intent of this Resolution and to execute and deliver for and on behalf of the City all certificates, instruments, agreements and other documents, as may be necessary or convenient to perform all matters herein authorized.

**PASSED AND ADOPTED** by the Board of Aldermen the 20th day of December, 2016.

---

Kathleen L. Rose, Mayor

ATTEST:

---

Robin Kincaid, City Clerk

## **AGREEMENT FOR PROFESSIONAL DESIGN SERVICES**

**THIS AGREEMENT** is entered into as of the 20th day of December, 2016 (the “Effective Date”), by and between Williams Spurgeon Kuhl & Freshnock Architects, Inc., (the “Consultant”) and the City of Riverside, Missouri (the “City”).

**WHEREAS**, the City desires to engage the Consultant to provide services to the City regarding consulting design services as more fully described in Exhibit A, entitled “Project Services” attached hereto and incorporated herein by reference.

**NOW, THEREFORE**, in consideration of the promises and mutual covenants between the parties and for other good and valuable consideration the receipt of which is acknowledged by the parties, they agree as follows.

### **1. Term of Agreement.**

This Agreement shall begin as of the Effective Date. The Project Services shall be performed as expeditiously as is consistent with professional skill and care, and shall proceed in accordance with the project schedule contained in Exhibit A. In the event the City determines that performance of the Project Services is not progressing as reasonably required by the project schedule, or that the Work is being unnecessarily delayed or will not be finished within the prescribed time, the City may, in the City’s sole discretion and in addition to any other right or remedy City may have, require Consultant, at Consultant’s sole cost, to accelerate progress. Such acceleration shall continue until the progress complies with the project schedule and clearly indicates that all work will be completed within the prescribed time.

### **2. Scope of Services.**

The Consultant shall provide the Project Services described in Exhibit A.

### **3. Compensation and Invoices.**

The City agrees to compensate the Consultant for satisfactory Project Services in the amount of \$40,000.00. This amount shall include all costs, permit fees, profit, overhead, expenses, taxes, and compensation of every kind related to the Project Services.

### **4. The City’s Responsibilities.**

The City shall cooperate with the Consultant in performing the Project Services by making available at reasonable times and places relevant City documents and pertinent City officers and employees to answer questions or respond to inquiries.

### **5. Insurance.**

A. General Provisions. Consultant shall file (within ten days of the Effective Date) with the City evidence of liability insurance that is consistent with the amounts set forth below.

**B. Limits and Coverage.**

1. A policy of insurance for Commercial General Liability Coverage and Automobile Liability Coverage shall be provided in the aggregate amount of not less than \$2,000,000 for all claims arising out of a single accident or occurrence and \$500,000 for any one person in a single accident of occurrence.
  - a. The following endorsements shall attach to the policy:
    - (i) The policy shall cover personal injury as well as bodily injury.
    - (ii) The policy shall cover blanket contractual liability subject to the standard universal exclusions of contractual liability included in the carrier's standard endorsement as to bodily injuries, personal injuries and property damage.
    - (iii) Broad form property damage liability shall be afforded.
    - (iv) The City shall be listed as an additional insured.
  - b. The policy shall not be cancelled, or materially modified so as to be out of compliance with the requirements of this section, or not renewed without thirty (30) days advance written notice of such event being given to the City.
2. The Consultant shall obtain and maintain Workers' Compensation Insurance in not less than the statutory amount, and in case any work is sublet, the Consultant shall require any subcontractors to provide Workers' Compensation insurance for all subcontractor's employees, in compliance with Missouri law. The Consultant hereby indemnifies the City for any damage resulting to it from failure of either the Consultant or any contractor or subcontractor to obtain and maintain such insurance.
3. Professional Liability Insurance in the minimum amount of \$1,000,000.

**6. Relationship of Parties.**

The Consultant shall be an independent contractor in its capacity hereunder. Nothing herein shall be construed to create an employer-employee relationship. All services performed pursuant to this Agreement shall be performed by the Consultant as an independent contractor. The Consultant shall not have the power to bind or obligate the City except as set forth in this Agreement or as otherwise approved by the City in writing.

**7. Notices.**

Any notice, approval or other communication between the City and the Consultant pursuant to this Agreement shall be made in writing and shall be deemed to be effective upon receipt or



refusal of service and may be given by personal delivery, courier, reliable overnight delivery or deposit in the United States mail, postage prepaid, registered or certified, return receipt requested, to the address specified below or to such other address as may later be designated by written notice of the other party:

The City: City of Riverside  
Attn: City Administrator  
2950 NW Vivion Road  
Riverside, Missouri 64150

The Consultant: Williams Spurgeon Kuhl & Freshnock Architects, Inc.  
110 Armour Road  
North Kansas City, Missouri 64116

Nothing contained in this section shall be construed to restrict the transmission of routine communications between representatives of the City and the Consultant.

#### **8. Disputes.**

In the event of a dispute between the City and the Consultant arising out of or related to this Agreement, the aggrieved party shall notify the other parties of the dispute within a reasonable time after such dispute arises in an effort to resolve the dispute by direct negotiation or mediation. During the pending of any dispute, the parties shall continue diligently to fulfill their respective obligations hereunder.

#### **9. Waiver.**

A waiver by any party of any breach of this Agreement by any other party shall only be in writing. Such a waiver shall not affect the waiving party's rights with respect to any other or further breach or the same kind of breach on another occasion.

#### **10. Severability.**

The invalidity, illegality, or unenforceability of any provision of this Agreement or the occurrence of any event rendering any portion or provision of this Agreement void shall in no way affect the validity or enforceability of any other portion or provision of this Agreement. Any invalid, illegal or unenforceable provision shall be deemed severed from this Agreement, and the balance of this Agreement shall be construed and enforced as if it did not contain the particular portion or provision held to be invalid, illegal or unenforceable. The parties further agree to amend this Agreement to replace any stricken provision with a valid, legal and enforceable provision that comes as close as possible to the intent of the stricken provision. The provisions of this Section shall not prevent this entire Agreement from being invalidated should a provision which is of the essence of this Agreement be determined to be invalid, illegal or unenforceable.

**11. Entire Agreement; Governing Law.**

This Agreement constitutes the entire agreement between the parties with respect to the subject matter hereof and supersedes all prior and contemporaneous agreements and negotiations with respect thereto. This Agreement may be amended only by a written instrument signed by all parties. This Agreement shall be governed by the laws of the State of Missouri. In the event this Agreement is litigated, venue shall be proper only in the Circuit Court of Platte County, Missouri.

**12. Successors and Assigns.**

Williams Spurgeon Kuhl & Freshnock Architects Inc. binds itself and its successors or assigns to all provisions of this Agreement.

**13. Termination for Convenience.**

Notwithstanding anything contained herein to the contrary, City may, at any time, for any reason, and without Consultant being in default, terminate Consultant's performance of any part or all of the Project Services for City's own convenience by giving written notice to Consultant. Upon receipt of notice of termination for City's convenience, Consultant shall, to the extent directed by City, stop work and turn over to City or City's designee materials and equipment purchased for the Project Services. City shall pay Consultant for only so much of the work as is actually performed as of the termination for convenience. City shall not be obligated to Consultant for any further payment, including but not limited to prospective overhead or profit on unperformed work.

**14. Assignment.**

Neither the City nor the Consultant shall assign any rights or duties under this Agreement without the prior written consent of the other party, which consent may be granted or withheld in such other party's absolute discretion. Nothing contained in this Section shall prevent the Consultant from engaging independent consultants, associates, and subcontractors to assist in performance of the Project Services subject to prior approval by the City.

**15. No Third Party Rights.**

The provisions of this Agreement shall not be deemed to create any third party benefit hereunder for any member of the public or to authorize any one, not a party hereto, to maintain suit pursuant to the terms of this Agreement.

**16. Counterparts.**

This Agreement may be executed in separate counterparts.

**17. Good Faith Efforts and Cooperation.**

The parties agree to use good faith efforts in a professional manner in the performance of their services and covenants in this Agreement and to cooperate at all times and coordinate their activities as necessary during the Term of this Agreement to assist in performance of the Project Services and to ensure performance of the Project Services in an efficient and timely manner.

#### **18. Authority.**

Each party represents to the other parties that it has the power and authority to enter into this Agreement and that the person(s) executing it on its behalf has the power to do so and to bind it to the terms of this Agreement.

#### **19. Covenant Against Contingent Fees.**

The Consultant warrants that it has not employed or retained any company or person, other than a bona fide employee working for the Consultant, to solicit or secure this Agreement, and that Consultant has not paid or agreed to pay any company or person, other than a bona fide employee, any fee, commission, percentage, brokerage fee, gifts, or any other consideration contingent upon or resulting from the award or making of this Agreement. For breach or violation of this warranty, the City shall have the right to annul this Agreement without liability or, at its discretion, to deduct from the contract price or consideration, or otherwise recover, the full amount of such fee, commission, percentage, brokerage fee, gift, or contingent fee.

#### **20. Ownership of Documents.**

Payment by City to Consultant as provided herein shall vest in City title to all drawings, sketches, studies, analyses, reports, models, and other paper, documents, computer files, and material produced by Consultant exclusively for the Project Services performed pursuant to this Agreement, and the right to use the same without other or further compensation, provided that any use for another purpose shall be without liability to the Consultant. Consultant will provide City will all drawings, sketches, studies, analyses, reports, models, and other paper, documents, computer files, and material produced by Consultant exclusively for the Project Services within ten (10) business days of receiving final payment, or upon a request by City for the same if made, all at no cost to City.

#### **21. Compliance with Laws.**

Consultant shall comply with all federal, state, and local laws, ordinances, and regulations applicable to the Project Services. Consultant shall secure all licenses, permits, etc. from public and private sources necessary for the fulfillment of its obligations under this Agreement.

#### **22. Indemnification and Hold Harmless.**

Consultant shall indemnify and hold harmless City and its officers, agents, employees, elected or appointed officials, and attorneys, each in their official and individual capacities, from and against judgments, damages, claims, losses, expenses, including reasonable attorneys' fees, to the extent caused by the negligent acts, errors, omissions, or willful misconduct of Consultant, or

its employees, or subcontractors, in the performance of Consultant's duties under this Agreement, or any supplements or amendments thereto.

**23. Professional Responsibility.**

Consultant will exercise reasonable skill, care, and diligence in the performance of its services in accordance with customarily accepted professional engineering practices. If Consultant fails to meet the foregoing standard, Consultant will perform at its own cost, and without reimbursement from City, the professional design services necessary to correct errors and omissions that are caused by Consultant's failure to comply with above standard.

**24. Tax Exempt.**

City is exempt from State and local sales taxes. Sites of all transactions derived from this Agreement shall be deemed to have been accomplished within the State of Missouri.

**25. Safety.**

In the performance of the Project Services, Consultant shall comply with the applicable provisions of the Federal Occupational Safety and Health Act, as well as any pertinent federal, state and/or local safety or environmental codes.

**26. Anti-Discrimination Clause.**

Consultant and its agents, employees, or subcontractors shall not in any way, directly or indirectly, discriminate against any person because of age, race, color, handicap, sex, national origin, or religious creed.

**27. Authorized Employees.**

Consultant acknowledges that Section 285.530 RSMo prohibits any business entity or employer from knowingly employing, hiring for employment, or continuing to employ an unauthorized alien to perform work within the State of Missouri. Consultant therefore covenants that it is not knowingly in violation of subsection 1 of Section 285.530 RSMo, and that it will not knowingly employ, hire for employment, or continue to employ any unauthorized aliens to perform work on the Project, and that its employees are lawfully eligible to work in the United States. Consultant agrees to execute the affidavit contained in Exhibit B.

**IN WITNESS WHEREOF**, the Consultant and the City have executed this Agreement as of the Effective Date.

**WILLIAMS SPURGEON KUHL &  
FRESHNOCK ARCHITECTS, INC.:**

By: \_\_\_\_\_

Name: \_\_\_\_\_

Title: \_\_\_\_\_

Date: \_\_\_\_\_

**CITY OF RIVERSIDE, MISSOURI:**

By: \_\_\_\_\_  
Kathleen L. Rose, Mayor

Countersigned by:  
CITY PURCHASING AGENT:

By: \_\_\_\_\_  
Gregory P. Mills  
City Administrator

ATTEST:

\_\_\_\_\_  
Robin Kincaid, City Clerk

## EXHIBIT A

### Project Services

#### **Investigation & Inquiry**

*The Study includes the assessment of space needs and adequacies of each Department with respect to the current requirements and the future requirements of the next 15-20 years. Our services include; architectural, structural, MEP engineering and civil engineering assessment services. We believe that most of the investigation and inquiry will be completed by WSKF with support services by the noted disciplines. However, we will use the resources of our consultants as needed.*

#### **Preliminary Design**

*The Study includes the translation of the “space needs and adequacies” into a preliminary design. In order to reach a recommended design, we will likely assess multiple design scenarios in order to test and affirm the final recommended design. As with the Investigation and Inquiry, we will utilize the resources of our consultant partners to assist with the design to assure design viability and appropriateness.*

The final deliverable documents to the City of Riverside will include; 1) Study narrative (describing the completed Investigations & Inquiry), 2) Preliminary Design (floor plan/site plan, building elevations/views) and 3) Cost Estimate (for the final design).

**EXHIBIT A**  
**Project Services**

ACTIVITES	Dec. '16			Jan. '17					Feb. '17				Mar. '17			
	12/13	12/19	12/26	1/3	1/9	1/16	1/23	1/30	2/6	2/13	2/20	2/27	3/6	3/13	3/20	3/27
<b>NOTICE-TO-PROCEED - 12/13</b>																
<b>INVESTIGATION/INQUIRY</b>																
Project Team Kickoff Meeting																
Team Investigation																
Team Draft Report																
<b>PRELIMINARY DESIGN</b>																
Project Team Kickoff Meeting																
Team Design																
Team Draft Report																
Team Report Update																
Team Final Report																



EXHIBIT B  
**AFFIDAVIT for WORK AUTHORIZATION**  
(as required by Section 285.530, Revised Statutes of Missouri)

As used in this Affidavit, the following terms shall have the following meanings:

**EMPLOYEE:** Any person performing work or service of any kind or character for hire within the State of Missouri.

**FEDERAL WORK AUTHORIZATION PROGRAM:** Any of the electronic verification of work authorization programs operated by the United States Department of Homeland Security or an equivalent federal work authorization program operated by the United States Department of Homeland Security to verify information of newly hired employees, under the Immigration Reform and Control Act of 1986 (IRCA), P.L. 99-603.

**KNOWINGLY:** A person acts knowingly or with knowledge,

- (a) with respect to the person's conduct or to attendant circumstances when the person is aware of the nature of the person's conduct or that those circumstances exist; or
- (b) with respect to a result of the person's conduct when the person is aware that the person's conduct is practically certain to cause that result.

**UNAUTHORIZED ALIEN:** An alien who does not have the legal right or authorization under federal law to work in the United States, as defined in 8 U.S.C. 1324a(h)(3).

State of \_\_\_\_\_ )

County of \_\_\_\_\_ ) ss:

**BEFORE ME**, the undersigned notary, personally appeared \_\_\_\_\_, who, being duly sworn, states on his/her oath or affirmation as follows:

1. My name is \_\_\_\_\_ and I am currently the \_\_\_\_\_ of Williams Spurgeon Kuhl & Freshnock Architects, Inc., 110 Armour Road, North Kansas City, Missouri 64116 (hereinafter "Consultant"), , and I am authorized to make this Affidavit.

2. I am of sound mind and capable of making this Affidavit, and am personally acquainted with the facts stated herein.

3. Consultant is enrolled in and participates in a federal work authorization program with respect to the employees working in connection with the following services contracted between Consultant and the City of Riverside: Public Safety Space Needs/Facility Study.

4. Consultant does not knowingly employ any person who is an unauthorized alien in connection with the contracted services set forth above.

5. Attached hereto is documentation affirming Consultant's enrollment and participation in a federal work authorization program with respect to the employees working in connection with the contracted services.

Further, Affiant saith not.

\_\_\_\_\_  
Signature of Affiant

Printed Name: \_\_\_\_\_

Subscribed and sworn to before me this \_\_\_\_\_ day of \_\_\_\_\_,  
2016.

\_\_\_\_\_  
Notary Public

*\*PLEASE NOTE:* Acceptable enrollment and participation documentation consists of the following 2 pages of the E-Verify Memorandum of Understanding: (1) a valid, completed copy of the first page identifying the Consultant; and (2) a valid copy of the signature page completed and signed by the Consultant, and the Department of Homeland Security – Verification.



2950 NW Vivion Road  
Riverside, Missouri 64150

---

**AGENDA DATE:** 12-20-2016  
**TO:** Mayor and Board of Aldermen  
**FROM:** Greg Mills  
**RE:** Tourism Commission Quarterly Update – FY 2016-2017 Quarter 2

*The Tourism Commission is required to report its activities to the Board quarterly. This memo shall serve as the FY 2016-2017 Second Quarter Report.*

#### **Current Commissioners**

<b>Name</b>	<b>Title</b>	<b>Term Expiration</b>	<b>Notes</b>
Jennifer Goering	Tourism Industry Rep	July 2016	Serving second term
Lori Locke	Tourism Industry Rep	July 2017	Serving first term
Julie Rule	Local Business Rep	July 2017	Serving first term
April Roberson	Local Business Rep	N/A	
Vacant	Hotel Industry Rep		
Frank Biondo	BOA Liaison	N/A	
Lori Boji	Employer Liaison	N/A	

#### **Budget**

The Tourism Commission has \$150,000 available for the 2016-2017 fiscal year. All applications were reviewed at the December 12<sup>th</sup> meeting and disbursements made as follows:

- Park Board – Park Study – Requested \$50,000. Request was denied.
- Scottish Highland Games – Requested \$12,500. Awarded \$3,500.
- Riverside en Plein Air – KCAI – Requested \$5,220. Request was denied.
- MusicFest/Chamber staff – Requested \$80,000. Awarded \$80,000 with a note that this is the last year of funding for the Chamber staff member.
- Dust Bowl Jamboree – Requested \$44,900. Awarded \$40,000.
- Camarofest Car Show – Requested \$7,500. Awarded \$1,500.

A total of \$125,000 was awarded.

# Riverside Public Works

Reporting Dates 11/01/2016 11/30/2016

## Cost Summary By Task

Task	Activities	Labor Hours	Labor Cost	Eqp Cost	Mat Cost	Con Cost	Overhead	Total Cost
Accident - Traffic Control/Cleanup	1	0.50	\$18.80	\$0.00	\$0.00	\$0.00	\$0.00	\$18.80
Animal Pickup/Cleanup Road Kill	1	0.50	\$11.45	\$2.50	\$0.00	\$0.00	\$0.00	\$13.95
Back Flow Device Service	4	3.00	\$112.77	\$17.50	\$0.00	\$0.00	\$0.00	\$130.27
Bill signing office duties mail	1	0.50	\$18.80	\$2.50	\$0.00	\$0.00	\$0.00	\$21.30
Building Maintenance	3	5.00	\$93.17	\$60.00	\$0.00	\$0.00	\$0.00	\$153.17
Camera work for Public Safety	1	0.50	\$18.80	\$3.50	\$0.00	\$0.00	\$0.00	\$22.30
Christmas Decorations	20	135.90	\$2,745.36	\$2,827.40	\$0.00	\$0.00	\$0.00	\$5,572.76
Comp Time Leave	2	2.50	\$40.31	\$0.00	\$0.00	\$0.00	\$0.00	\$40.31
Cracksealing	18	275.25	\$4,707.75	\$12,655.92	\$0.00	\$0.00	\$0.00	\$17,363.67
Debris cleanup at Public Works -	1	0.50	\$8.21	\$25.00	\$0.00	\$0.00	\$0.00	\$33.21
Doctor Visit	1	1.25	\$20.51	\$0.00	\$0.00	\$0.00	\$0.00	\$20.51
Electrical	9	30.50	\$625.37	\$355.00	\$0.00	\$0.00	\$0.00	\$980.37
Equip Maint	8	13.00	\$242.11	\$431.00	\$0.00	\$0.00	\$0.00	\$673.11
Fire Alarm Check	3	6.50	\$154.51	\$30.00	\$0.00	\$0.00	\$0.00	\$184.51
Fire Extinguisher Check	4	5.50	\$135.78	\$0.00	\$0.00	\$1.00	\$0.00	\$136.78
Flag raising and lowering	2	1.00	\$30.24	\$6.00	\$0.00	\$0.00	\$0.00	\$36.24
Flag replacement	2	1.00	\$15.49	\$37.50	\$148.00	\$0.00	\$0.00	\$200.99
Generator Maintenance	2	3.00	\$61.07	\$10.00	\$0.00	\$0.00	\$0.00	\$71.07
Graffiti removal	1	1.00	\$16.67	\$25.00	\$0.00	\$0.00	\$0.00	\$41.67
Grounds Maint.	1	1.00	\$15.49	\$0.00	\$0.00	\$0.00	\$0.00	\$15.49
Heating and Air Conditioning Maint	2	0.00	\$0.00	\$0.00	\$0.00	\$2.00	\$0.00	\$2.00
Holiday	3	176.00	\$4,280.32	\$0.00	\$0.00	\$0.00	\$0.00	\$4,280.32
HVAC in house maintenance	10	11.00	\$367.01	\$63.50	\$0.00	\$0.00	\$0.00	\$430.51
Irrigation check and fix	1	0.50	\$18.80	\$3.50	\$0.00	\$0.00	\$0.00	\$22.30
Late for work	1	0.10	\$2.29	\$0.00	\$0.00	\$0.00	\$0.00	\$2.29
Meeting	6	14.00	\$447.68	\$240.00	\$0.00	\$0.00	\$0.00	\$687.68
Misc Maint	1	5.50	\$125.90	\$72.50	\$0.00	\$0.00	\$0.00	\$198.40
Mowing	9	9.00	\$137.61	\$726.00	\$0.00	\$0.00	\$0.00	\$863.61
Office Public Works	42	225.50	\$9,184.60	\$60.00	\$0.00	\$0.00	\$0.00	\$9,244.60
Parks Grounds Maint	2	4.00	\$69.18	\$125.00	\$0.00	\$0.00	\$0.00	\$194.18
Parts Run	10	14.50	\$310.26	\$305.12	\$0.00	\$0.00	\$0.00	\$615.38
Plumbing Maintenance	2	1.50	\$34.34	\$7.50	\$0.00	\$0.00	\$0.00	\$41.84
Restroom check and cleanup	5	4.50	\$76.90	\$137.50	\$0.00	\$0.00	\$0.00	\$214.40
Schedule Manpower/Directions	7	4.25	\$159.76	\$26.25	\$0.00	\$0.00	\$0.00	\$186.01
Shop Maint	2	3.50	\$57.53	\$0.00	\$0.00	\$0.00	\$0.00	\$57.53
Sick	15	92.75	\$2,000.81	\$0.00	\$0.00	\$0.00	\$0.00	\$2,000.81
Snow Plow Equip Maint	7	51.00	\$936.87	\$2,020.00	\$0.00	\$0.00	\$0.00	\$2,956.87
Stack salt	5	6.00	\$191.59	\$560.00	\$0.00	\$0.00	\$0.00	\$751.59
Stock Supplies for Custodians	4	6.50	\$107.79	\$132.50	\$0.00	\$0.00	\$0.00	\$240.29
Storm Sewers Cleaning	1	9.00	\$139.41	\$337.50	\$0.00	\$0.00	\$0.00	\$476.91
Street Patching / Maint	2	17.00	\$288.71	\$922.48	\$0.00	\$0.00	\$0.00	\$1,211.19
Street Signs / Maint	6	9.00	\$166.69	\$225.00	\$91.24	\$0.00	\$0.00	\$482.93
Street Sweeping	8	53.00	\$934.19	\$4,598.00	\$0.00	\$0.00	\$0.00	\$5,532.19
Traffic Control	2	3.00	\$64.30	\$53.50	\$0.00	\$0.00	\$0.00	\$117.80
Trail Maint	1	2.00	\$38.18	\$5.00	\$0.00	\$0.00	\$0.00	\$43.18
Trail Safety Inspection	1	1.00	\$44.48	\$40.00	\$0.00	\$0.00	\$0.00	\$84.48
Training for work	3	23.00	\$488.33	\$0.00	\$0.00	\$0.00	\$0.00	\$488.33
Trash Pick Up	23	23.00	\$384.25	\$675.00	\$0.00	\$0.00	\$0.00	\$1,059.25
Trash Route Inspection	3	4.50	\$194.36	\$180.00	\$0.00	\$0.00	\$0.00	\$374.36
Trash-Carts	1	2.00	\$36.24	\$50.00	\$0.00	\$0.00	\$0.00	\$86.24
Vacation	10	69.00	\$1,423.41	\$0.00	\$0.00	\$0.00	\$0.00	\$1,423.41
Voting Time - National Election	3	4.00	\$70.24	\$0.00	\$0.00	\$0.00	\$0.00	\$70.24
Water feature maint	11	57.00	\$1,322.78	\$720.00	\$119.85	\$0.00	\$0.00	\$2,162.63
Winterize	3	8.00	\$152.21	\$175.00	\$0.00	\$0.00	\$0.00	\$327.21

Cost Summary By Task

Task		Activities	Labor Hours	Labor Cost	Eqp Cost	Mat Cost	Con Cost	Overhead	Total Cost
Tasks:	54	297	1,402.50		\$28,949.67		\$3.00		\$62,661.35
				\$33,349.59		\$359.09		\$0.00	

		A	B	C	D	E	F	G	H	I	J	K	L	M
1	Riverside Police Department All Activities													
2	PATROL	2016	Reported Part I CRIMES	Reported Part II CRIMES	Traffic Citations Issued	DUI Arrests	All Other Citations Issued	All Other Arrests Made	Calls For Service	Self- Initiated Activities	Reports Written	POP Activities		
3		January	20	44	182	3	28	89	366	604	215	1		
4		February	17	61	222	1	26	123	377	688	239	2		
5		March	18	49	316	4	27	98	334	850	241	2		
6		April	20	36	165	3	19	85	343	579	197	2		
7		May	13	58	245	3	30	94	402	674	237	3		
8		June	9	47	261	1	32	107	371	719	232	1		
9		July	16	43	187	4	25	86	342	646	218	1		
10		August	13	45	197	1	24	116	384	651	218	2		
11		September	19	61	205	8	21	97	387	563	213	1		
12		October	15	42	172	2	15	81	328	549	204	3		
13		November	19	60	117	4	18	88	340	435	247	3		
14		December												
15		Year Total	179	546	2,269	34	265	1,064	3,974	6,958	2,461	21		
16		2016	Searches Conducted		Searches with Positive Results									
17	K-9	2016	Schools	Other	Drugs	People	Other	Mutual Aid	Self-Initiated Activities	Calls for Service	Arrests Made	Training Hours		
18		January	0	9	5	0	0	0	26	17	3	25		
19		February	1	16	7	0	0	1	58	29	5	20		
20		March	2	6	3	0	0	3	76	29	3	22		
21		April	0	8	4	0	0	2	52	43	3	40		
22		May	0	9	6	0	1	1	25	32	4	20		
23		June	0	20	11	1	1	4	21	41	7	16		
24		July	0	8	7	0	0	1	13	51	4	16		
25		August	0	11	4	1	0	4	23	20	5	16		
26		September	1	5	3	0	0	4	9	30	0	60		
27		October	0	3	2	0	0	1	9	44	1	12		
28		November	1 *	1	0	0	0	0	6	18	2	16		
29		December												
30		Year Total	5	96	52	2	2	21	318	354	37	263		
31	CRIMINAL INVESTIGATION UNIT	2016	Cases Received	Cases Assigned	Charges Filed		Cases Closed	Cases Submitted to Prosecutor	Charges Declined	Cases Exceptional ly Cleared	Reports Written			
32		2016			State	Municipal								
33		January	23	23	6	0	8	7	2	1	50			
34		February	17	13	7	2	11	8	0	6	57			
35		March	23	21	9	1	29	10	0	2	75			
36		April	11	9	6	1	8	6	0	1	50			
37		May	18	11	8	0	8	7	1	0	49			
38		June	25	40	6	3	12	12	0	6	80			
39		July	35	35	9	1	28	17	0	1	93			
40		August	21	21	12	0	12	11	0	1	70			
41		September	20	17	4	0	7	4	0	1	42			
42		October	26	29	12	0	14	11	0	1	63			
43	November	7	7	7	0	6	11	0	0	77				
44	December													
45	Year Total	226	226	86	8	143	104	3	20	706				
46	SCHOOL RESOURCE OFFICER	2016	Arrests	Reports Written	Classes Taught	External Community Relations Activities	POP Activities							
47		January	4	23	3	0	0							
48		February	1	46	5	3	1							
49		March	0	29	4	4	2							
50		April	1	34	5	3	1							
51		May	2	52	0	0	1							
52		June	NA	NA	NA	NA	NA							
53		July	NA	NA	NA	NA	NA							
54		August	0	10	1	2	1							
55		September	7	25	5	3	0							
56		October	0	11	2	0	0							
57		November	2	21	3	0	1							
58	December													
59	Year Total	17	251	28	15	7								
60														

[illegible]



# Riverside, Missouri Fire Department

## October 2016 Monthly Activities

Monthly						Fire Safety Inspections			
Structure Fires	EMS Calls	Other Calls For Service	Motor Vehicle Accidents	Mutual Aid Requests	Training Hours	Public Relations	Number Conducted	Violations Noted	Violations Cleared
0	90	22	13	0	145	9	4	85	181
Year Totals									
6	980	267	65	18	4083	41	303	627	477

Total calls for 2016 to date (1336)

Riverside Fire average response time to calls for Oct was 4 mins 59 secs.

KCFD average response time to calls for Oct was 12 mins 10 secs.

AMR average response time for Houston Lake / Northmoor to calls for Oct was 10 mins 55 secs.

We received Automatic aid 0 times, provided automatic aid 0 times.

We had 14 calls that were happening at the same time.

Respectively submitted,

Gordon Fowlston  
Fire Chief



# Riverside Fire Rescue

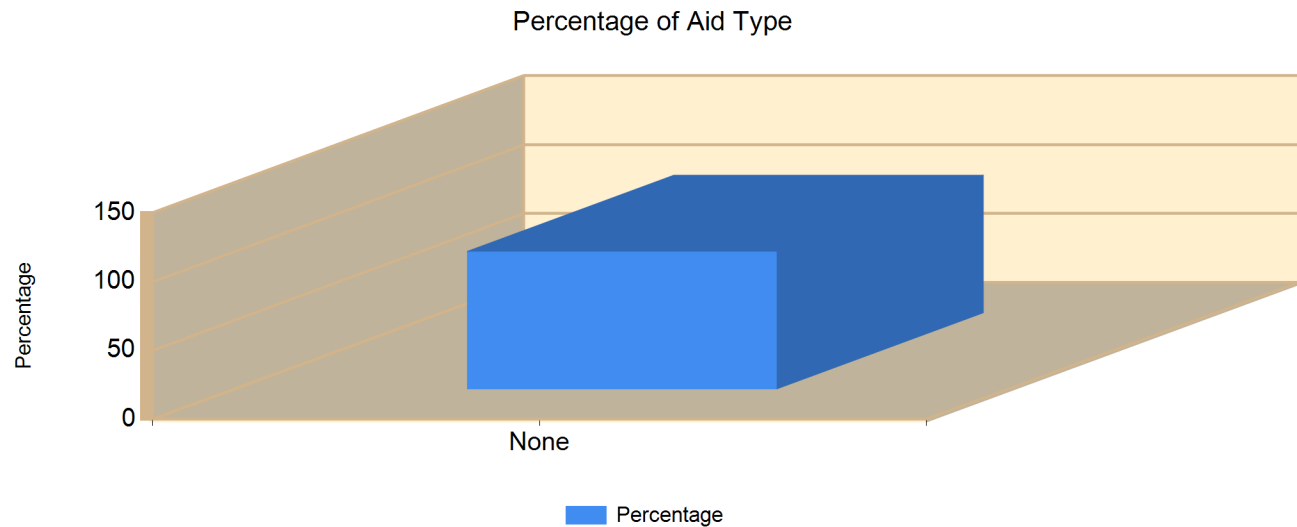
Riverside, MO

This report was generated on 12/12/2016 1:31:27 PM



## Count of Aid Given and Received for Incidents for Date Range

Start Date: 11/01/2016 | End Date: 11/30/2016



AID TYPE	TOTAL	% of TOTAL
None	105	100.0%

Only REVIEWED incidents included

# Riverside Fire Rescue

Riverside, MO

This report was generated on 12/12/2016 1:32:38 PM



## Occupancies Inspected for Date Range

Start Date: 11/01/2016 | End Date: 11/30/2016

OCCUPANCY	ID	ADDRESS	ZONE	LAST INSPECTION
MARTINREA	MART01	5233 NW 41 ST	Ward 1	11/04/2016
Northpoint Development Office	MMQU01	4825 NW 41 ST #500	Ward 1	11/09/2016
Progress Rail Shipping office	500506	4400 NW 41 ST	Ward 3	11/22/2016
YANFENG AUTO TRIM USA	YANF01	4110 NW HELENA RD		11/08/2016

# of Occupancies Inspected: 4

% Occupancies Inspected: 0.88

Included occupancies are those that have a LOCKED inspection on record for the date range provided.

# Riverside Fire Rescue

Riverside, MO

This report was generated on 12/12/2016 1:25:01 PM



## Count of Overlapping Incidents for Month for Year

Month: November | Year: 2016

# OVERLAPPING	% OVERLAPPING	TOTAL
14	13.33	105

OVERLAPPING INCIDENT DETAILS					
ALARM	CLEAR/CANCEL	INCIDENT #	INCIDENT TYPE	STATION	ZONE
<b>11/1/2016</b>					
11/1/2016 6:30:50 AM	11/1/2016 6:53:12 AM	2016-1148	322	Riverside Fire Dept	Riverside 1
11/1/2016 6:32:43 AM	11/1/2016 7:13:44 AM	2016-1149	311	Riverside Fire Dept	Riverside 2
11/1/2016 11:35:47 PM	11/1/2016 11:51:43 PM	2016-1153	321	Riverside Fire Dept	Riverside 2
11/1/2016 11:39:25 PM	11/2/2016 12:05:58 AM	2016-1154	735	Riverside Fire Dept	Riverside 2
<b>11/2/2016</b>					
11/2/2016 6:16:24 PM	11/2/2016 6:41:54 PM	2016-1158	322	Riverside Fire Dept	Riverside 3
11/2/2016 6:33:19 PM	11/2/2016 7:11:49 PM	2016-1159	322	Riverside Fire Dept	Riverside 1
<b>11/8/2016</b>					
11/8/2016 12:05:27 PM	11/8/2016 1:15:11 PM	2016-1181	651	Riverside Fire Dept	Northmoor
11/8/2016 12:42:24 PM	11/8/2016 1:17:39 PM	2016-1182	321	Riverside Fire Dept	Riverside 1
<b>11/17/2016</b>					
11/17/2016 7:10:13 PM	11/17/2016 7:32:52 PM	2016-1231	321	Riverside Fire Dept	Riverside 1
11/17/2016 7:19:46 PM	11/17/2016 7:27:38 PM	2016-1232	622	Riverside Fire Dept	Riverside 1
<b>11/22/2016</b>					
11/22/2016 8:07:09 AM	11/22/2016 8:10:20 AM	2016-1244	611	Riverside Fire Dept	Riverside 1
11/22/2016 8:07:09 AM	11/22/2016 8:30:02 AM	2016-1245	311	Riverside Fire Dept	Riverside 2
11/22/2016 4:41:12 PM	11/22/2016 5:01:55 PM	2016-1247	321	Riverside Fire Dept	Riverside 1

Percentage of incidents overlapping from total incidents in month, year. Compared incident time range as either Alarm to Cancel or Alarm to Clear for incidents that have either Cancel or Clear time recorded. Reviewed calls only. Group by date. Displays date, incident number, incident type (numeric only), zone, and station.



**EMERGENCY REPORTING**

emergencyreporting.com

Doc Id: 1120

Page # 1

OVERLAPPING INCIDENT DETAILS					
ALARM	CLEAR/CANCEL	INCIDENT #	INCIDENT TYPE	STATION	ZONE
11/22/2016 4:45:00 PM	11/22/2016 5:27:00 PM	2016-1248	311	Riverside Fire Dept	Northmoor

Percentage of incidents overlapping from total incidents in month,year. Compared incident time range as either Alarm to Cancel or Alarm to Clear for incidents that have either Cancel or Clear time recorded. Reviewed calls only. Group by date. Displays date, incident number, incident type (numeric only), zone, and station.

# Riverside Fire Rescue

Riverside, MO

This report was generated on 12/12/2016 1:22:57 PM



## Code Hours Summary per Training Code For Date Range

Training Code(s): All Training Codes | Start Date: 11/01/2016 | End Date: 11/30/2016

Total Training Hours By Code		
Total Hours for Training Code: Apparatus Familiarization		3:00
Total Hours for Training Code: Emergency Reporting		2:00
Total Hours for Training Code: EMS CEU's - Classroom		32:00
Total Hours for Training Code: Fire Investigator		8:00
Total Hours for Training Code: Fire Officer Training		24:30
Total Hours for Training Code: Firefighter Safety and Health		16:00
Total Hours for Training Code: General Driving		1:00
Total Hours for Training Code: MPR		9:15
Total Hours for Training Code: Orientation and Fire Service History		38:00
Total Hours for Training Code: Physical Fitness		12:05
Totals for all selected Training Codes 11/1/2016 - 11/30/2016		14 personnel 145:50

Displays the total training hours per for each of the selected Training Codes. NOTE that this report only applies to accounts that are set to Track Hours by Training Code.

# Riverside Fire Rescue

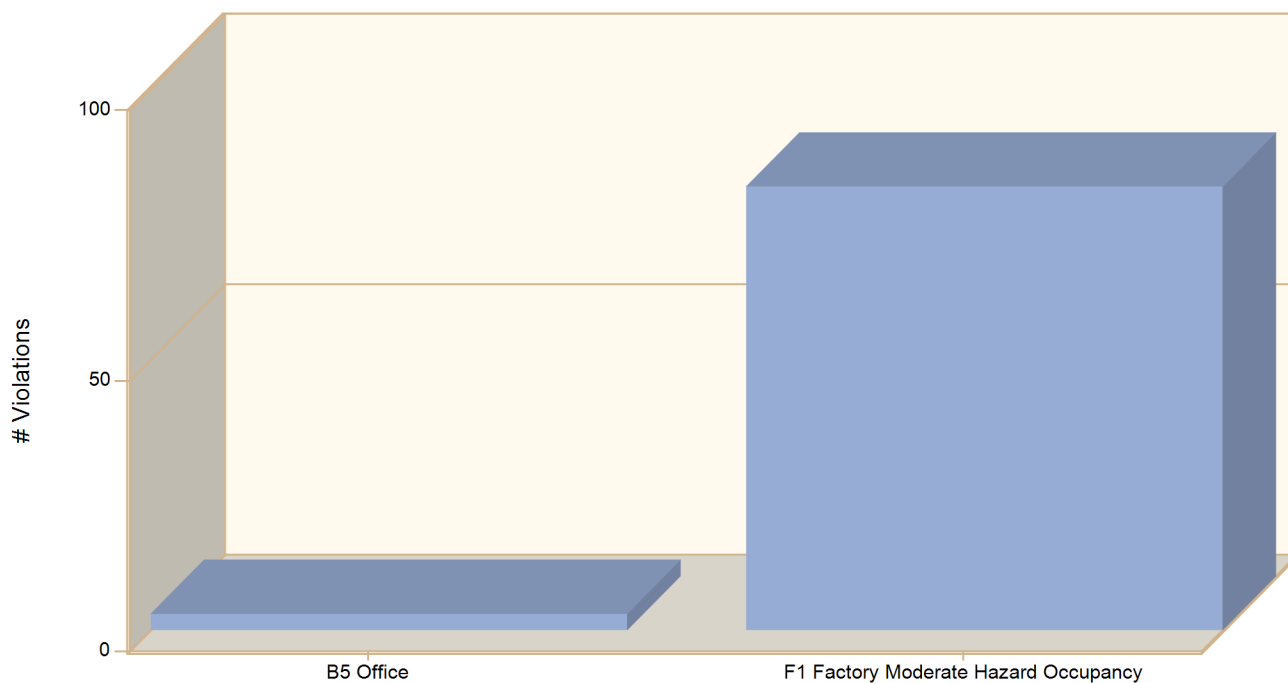
Riverside, MO

This report was generated on 12/12/2016 1:38:27 PM



## Count of Violations per Occupancy Type for Inspection Date Range

MultiObservationValue: All Observation Values | Start Date: 11/01/2016 | End Date: 11/30/2016



OCCUPANCY TYPE	# VIOLATIONS
B5 Office	3
F1 Factory Moderate Hazard Occupancy	82
<b>Total of Violations:</b>	<b>85</b>

Total number of violations for LOCKED inspections that took place for the DATE RANGE provided for each Occupancy Type.

# Riverside Fire Rescue

Riverside, MO

This report was generated on 12/9/2016 4:06:30 PM



## Average Response Time per Apparatus for Date Range

Start Date: 11/01/2016 | End Date: 11/30/2016

APPARATUS	AVERAGE RESPONSE TIME, minutes (Dispatch to Arrived)
AMR 1	10.77
C800	11.41
C802	2.45
C803	3.46
C804	7.67
KCFD	23.60
KCFD1	11.19
KCFD2	3.42
KCM4	9.85
KCM40	12.14
P1	5.14
P2	4.27
Q2	5.49

AVERAGE RESPONSE TIME calculated from the average time difference between DISPATCH and ARRIVED times on Basic Info 4. Only REVIEWED incidents included.



**EMERGENCY  
REPORTING**

emergencyreporting.com

Doc Id: 307

Page # 1

# Riverside Fire Rescue

Riverside, MO

This report was generated on 12/9/2016 4:04:24 PM



## Incident Type per Zone for Incident Status for Date Range

Incident Status(s): All Incident Statuses | Start Date: 11/01/2016 | End Date: 11/30/2016

INCIDENT TYPE	Incident Status	# INCIDENTS
<b>Zone: 01 - Riverside 1</b>		
140 - Natural vegetation fire, other	Reviewed	1
160 - Special outside fire, other	Reviewed	1
311 - Medical assist, assist EMS crew	Reviewed	5
320 - Emergency medical service, other	Reviewed	1
321 - EMS call, excluding vehicle accident with injury	Reviewed	43
321 - EMS call, excluding vehicle accident with injury	Completed	14
321 - EMS call, excluding vehicle accident with injury	Incomplete	1
322 - Motor vehicle accident with injuries	Reviewed	7
324 - Motor vehicle accident with no injuries.	Reviewed	1
400 - Hazardous condition, other	Reviewed	1
510 - Person in distress, other	Reviewed	1
511 - Lock-out	Reviewed	1
551 - Assist police or other governmental agency	Reviewed	2
554 - Assist invalid	Reviewed	2
611 - Dispatched & cancelled en route	Reviewed	2
622 - No incident found on arrival at dispatch address	Reviewed	1
735 - Alarm system sounded due to malfunction	Reviewed	1

<b>Zone: 02 - Riverside 2</b>		
311 - Medical assist, assist EMS crew	Reviewed	3
321 - EMS call, excluding vehicle accident with injury	Reviewed	7
321 - EMS call, excluding vehicle accident with injury	Completed	4
322 - Motor vehicle accident with injuries	Reviewed	2
424 - Carbon monoxide incident	Reviewed	1
500 - Service Call, other	Reviewed	1
551 - Assist police or other governmental agency	Reviewed	1
714 - Central station, malicious false alarm	Reviewed	1
735 - Alarm system sounded due to malfunction	Reviewed	1

This report gives a count of each incident type for the Incident Status or Statuses selected.



**EMERGENCY REPORTING**

emergencyreporting.com

Doc Id: 384

Page # 1 of 2



INCIDENT TYPE	Incident Status	# INCIDENTS
<b>Zone: 03 - Riverside 3</b>		
311 - Medical assist, assist EMS crew	Reviewed	1
321 - EMS call, excluding vehicle accident with injury	Reviewed	1
321 - EMS call, excluding vehicle accident with injury	Completed	1
322 - Motor vehicle accident with injuries	Reviewed	2
440 - Electrical wiring/equipment problem, other	Reviewed	1
441 - Heat from short circuit (wiring), defective/worn	Reviewed	1
551 - Assist police or other governmental agency	Reviewed	1
735 - Alarm system sounded due to malfunction	Reviewed	1
<b>Zone: 04 - Houston Lake</b>		
311 - Medical assist, assist EMS crew	Reviewed	1
321 - EMS call, excluding vehicle accident with injury	Reviewed	1
611 - Dispatched & cancelled en route	Reviewed	1
<b>Zone: 05 - Kansas City MO</b>		
611 - Dispatched & cancelled en route	Reviewed	1
<b>Zone: 07 - Northmoor</b>		
311 - Medical assist, assist EMS crew	Reviewed	1
321 - EMS call, excluding vehicle accident with injury	Reviewed	3
463 - Vehicle accident, general cleanup	Reviewed	1
651 - Smoke scare, odor of smoke	Reviewed	1

This report gives a count of each incident type for the Incident Status or Statuses selected.

# Riverside Fire Rescue

*Riverside, MO*

This report was generated on 12/9/2016 4:05:39 PM



## Incident Count for All Calls (All Statuses) for Agency for Date Range

Start Date: 11/01/2016 | End Date: 11/30/2016

AGENCY	# INCIDENTS
Riverside Fire Rescue	125

This report includes all Incomplete, Complete and Reviewed Incidents for all incident types, NOT just Reviewed Incidents.



**EMERGENCY  
REPORTING**

[emergencyreporting.com](http://emergencyreporting.com)

Doc Id: 1081

Page # 1

# **November 2016 Community Center Report**

## **November Monthly Report**

### **Parks/ Community Center Rentals**

- Community Center –election
- Renner Brenner – 0 rentals
- EH Young –0 rentals

### **NON –Membership Programs**

- Senior Dances – No dances
- Beyond the Bell -200
- Cards – 145

### **Special Events- City Holiday Lighting-100**

### **Membership Programs**

- Participation in group exercise classes, open gym and activities in the Community Center : 585



**2950 NW Vivion Road  
Riverside, Missouri 64150**

---

**MEMO DATE:** December 16, 2016  
**AGENDA DATE:** December 20, 2016  
**TO:** Mayor and Board of Aldermen  
**FROM:** Mike Duffy  
**RE:** Community Development Department Activity October 2016

**CODES:** Violations Observed: 26  
Violations Resolved: 26  
Notices Sent: 4  
Signs Removed: 18  
Citations Issued: 0

**PERMITS:** Building Commercial-1  
Building Residential-6  
Electrical-4  
Sign-2  
Right-of-Way-4  
Total-17

**Animal Control:** Animal Complaints: 26  
Self Initiated Calls: 24  
Animals Returned to Owner: 6  
Impounded Domestic Animals: 1  
Impounded Wild Animals: 0  
Verbal Warnings: 2  
Uniform Citations: 0

**P&Z ACTIVITY:** Northwood Acres Replat, Horizons VI Replat, Land Disturbance 4302 NW Mattox Road.

**City of Riverside, MO**  
**Statement of Receipts and Expenditures**  
**November 30, 2016**  
**(with 42% of year passed)**

<b>Receipts:</b>	<b>16-17 Budget</b>	<b>YTD Rec.</b>	<b>% Received</b>
Permits & Licenses	95,500	45,197	47.3%
Fees, Fines & Forfeitures	261,500	130,968	50.1%
Taxes	2,669,450	1,167,790	43.7%
Investment Income	65,400	5,050	7.7%
Assigned Income	7,078,500	1,233,493	17.4%
Other	105,737	74,734	70.7%
Missouri Gaming	6,400,000	2,768,827	43.3%
Real Estate Income	4,300,000	1,116,251	26.0%
<b>Revenue All Sources</b>	<b>20,976,087</b>	<b>6,542,310</b>	<b>31.2%</b>

<b>General Fund Expenditures:</b>	<b>16-17 Budget</b>	<b>YTD Expend.</b>	<b>% Expended</b>
Elected Officials	59,119	13,658	23.1%
Administrative	1,500,470	627,954	41.9%
Human Resources	140,000	28,807	20.6%
Municipal Court	199,246	71,483	35.9%
Public Safety Admin.	500,111	168,980	33.8%
Police	2,286,700	949,395	41.5%
Operations Support	645,195	260,613	40.4%
Fire Department	1,748,207	705,151	40.3%
Public Works	1,281,747	493,643	38.5%
Engineering	224,316	84,451	37.6%
Building Maintenance	422,600	110,362	26.1%
Parks	334,500	113,597	34.0%
Community Center	418,490	162,559	38.8%
Community Development	503,726	193,242	38.4%
<b>Total General Expenditures</b>	<b>10,264,427</b>	<b>3,983,895</b>	<b>38.8%</b>

<b>Capital Equipment</b>	<b>16-17 Budget</b>	<b>YTD Expend.</b>	<b>% Expended</b>
Administration	117,400	6,338	5.4%
Public Safety	143,000	110,257	77.1%
Public Works	100,000	51,391	51.4%
<b>Total Capital Equipment</b>	<b>360,400</b>	<b>167,986</b>	<b>46.6%</b>

<b>Capital Improvement</b>	<b>16-17 Budget</b>	<b>YTD Expend.</b>	
Public Works	3,778,000	59,804	1.6%
<b>Total Capital Improvement</b>	<b>3,778,000</b>	<b>59,804</b>	<b>1.6%</b>

<b>Debt Service Fund</b>	<b>16-17 Budget</b>	<b>YTD Expend.</b>	
Administrative	6,989,000	644,416	9.2%
<b>Total Debt Service Fund</b>	<b>6,989,000</b>	<b>644,416</b>	<b>9.2%</b>

<b>Tourism Tax Fund</b>	<b>16-17 Budget</b>	<b>YTD Expend.</b>	
Administrative	150,000	19,259	12.8%
<b>Total Tourism Tax Fund</b>	<b>150,000</b>	<b>19,259</b>	<b>12.8%</b>
<b>TOTAL EXPENDITURES</b>	<b>21,541,827</b>	<b>4,875,360</b>	<b>22.6%</b>

**Outstanding TIF Debt** \$ 28,395,000

**City of Riverside  
Gaming Revenue**

	<b>YE 2014</b>	<b>YE 2015</b>	<b>% Change</b>	<b>YE 2016</b>	<b>% Change</b>	<b>YE 2017</b>	<b>% Change</b>
July	583,316	500,938	-16.4%	553,779	10.5%	608,822	9.9%
August	581,478	533,131	-9.1%	524,638	-1.6%	528,579	0.8%
September	520,341	471,344	-10.4%	513,482	8.9%	537,585	4.7%
October	502,019	506,793	0.9%	533,046	5.2%	550,097	3.2%
November	513,602	511,144	-0.5%	499,244	-2.3%	518,099	3.8%
December	487,784	528,424	7.7%	557,752	5.6%		-100.0%
January	502,483	528,063	4.8%	555,748	5.2%		-100.0%
February	527,595	506,474	-4.2%	576,115	13.8%		-100.0%
March	575,391	565,880	-1.7%	582,276	2.9%		-100.0%
April	529,199	529,862	0.1%	599,927	13.2%		-100.0%
May	564,056	574,333	1.8%	570,407	-0.7%		-100.0%
June	493,457	489,439	-0.8%	515,367	5.3%		-100.0%
Total	6,380,720	6,245,825		6,581,780		2,743,182	

Note:

December 2015 to November 2016	6,700,774
December 2014 to November 2015	6,346,664
Increase	<u>354,110</u>
% Increase	<u>5.6%</u>

**City of Riverside**  
**Investment Balances as of 11/30/16**

	<b>CUSIP</b>	<b>Maturity Date</b>	<b>Par Amount</b>	<b>Interest Rate</b>
<b><i>General Fund Investments</i></b>				
Bank Liberty CD		06/08/2017	700,000.00	0.9300%
Bank Liberty CD		12/08/2016	700,000.00	0.7500%
Bank Liberty CD		12/28/2016	750,000.00	0.6000%
Bank Liberty CD		06/28/2017	750,000.00	0.7000%
Bank Liberty CD		09/23/2017	750,000.00	0.7000%
FNMA	3135G0GY3	01/30/2017	500,000.00	1.2500%
FHLB	3130A7P25	04/04/2017	500,000.00	0.6250%
Fed Farm Bank	3133EFBS5	07/03/2017	504,000.00	0.4500%
FHLMC	3134G8L49	08/25/2017	250,000.00	0.8000%
FHLMC	3134G9HJ9	08/10/2018	480,000.00	1.0000%
Fed Farm Bank	3133EGBG9	08/23/2018	350,000.00	1.0000%
FHLMC	3134GASM7	10/26/2018	350,000.00	0.7500%
FNMA	3136G2EH6	02/27/2019	500,000.00	1.3750%
FNMA	3136G3BR5	03/22/2019	75,000.00	1.2500%
FNMA	3136G3H32	07/26/2019	500,000.00	1.0800%
FNMA	3136G0ZBO	08/28/2019	500,000.00	1.5500%
FNMA	3136G4JA2	11/26/2019	750,000.00	1.5000%
FHLMC	3134G9G27	12/30/2019	250,000.00	1.1000%
Ameritrade Overnight			5,435.96	
MOSIP Overnight			642.51	
Total Overnight			6,078.47	
Total CD's			3,650,000.00	
Total US Agencies			5,509,000.00	
Total Investments			<u>9,165,078.47</u>	
<b><i>Capital Improvement Fund</i></b>				
Riverside SIP Escrow				
Fidelity Treasury Fund			740,310.39	
			<u>740,310.39</u>	
<b><i>Levee Debt Repayment Fund</i></b>				
2014 Debt Service Reserve				
Money Market			10,650.48	
FFCB	3133EGNY7	01/28/2019	250,000.00	1.1100%
FNMA	3135G0Q30	09/27/2019	230,000.00	1.1800%
FNMA	3135G0M42	07/13/2018	150,000.00	0.9000%
FNMA	3136G2Y68	02/26/2019	125,000.00	0.7500%
2007 Debt Service Reserve				
Money Market Fund			65,689.45	
FHLB	313385CD6	01/30/2017	1,300,000.00	
FNMA	3135G0M42	07/13/2018	600,000.00	0.9000%
FNMA	3135G0H97	02/22/2019	500,000.00	1.6250%
FNMA	3135G0GY3	01/30/2017	987,000.00	1.2500%
Total Money Market			76,339.93	
Total CD's			-	
Total US Agencies			2,362,000.00	
Total Investments			<u>2,438,339.93</u>	