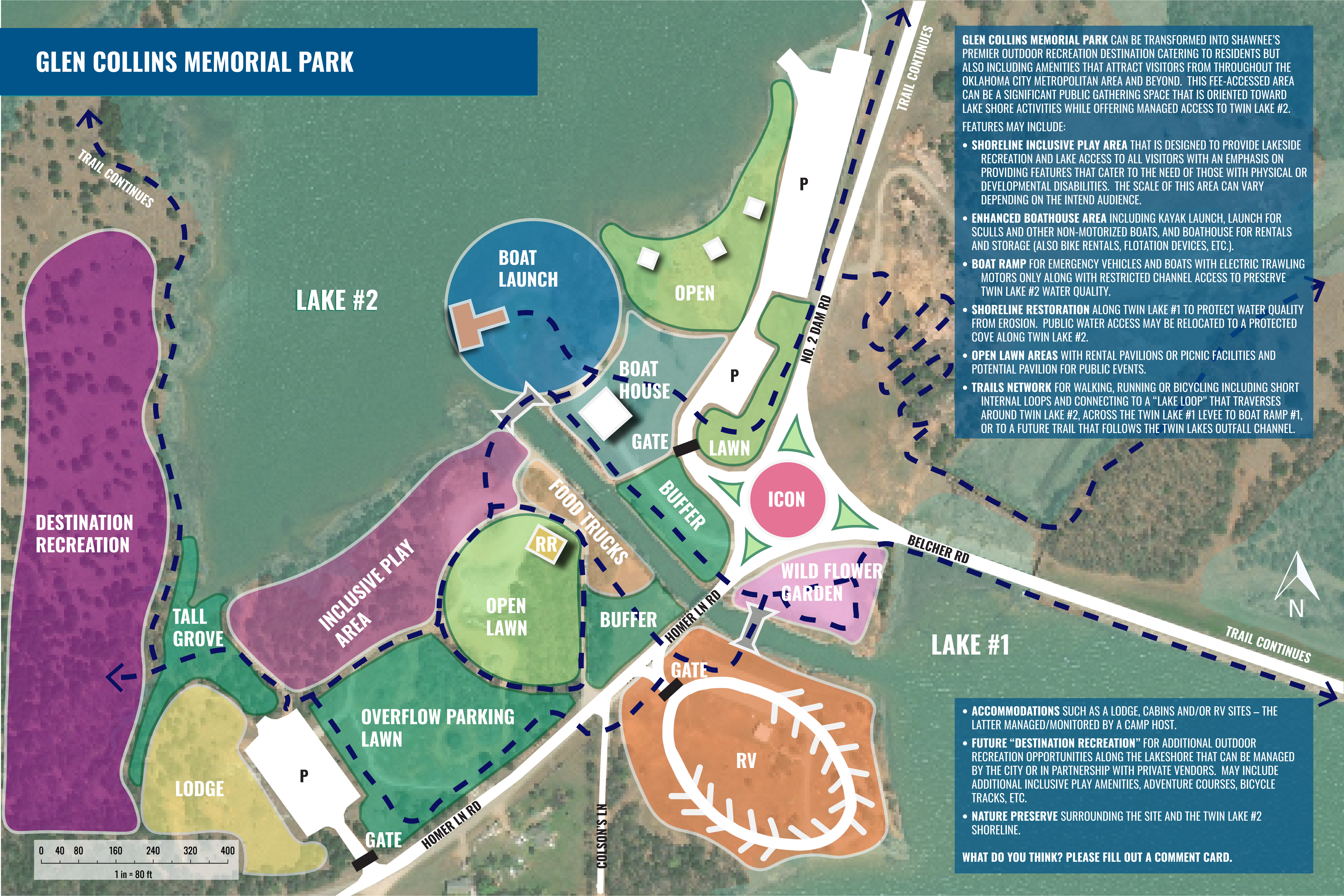


# GLEN COLLINS MEMORIAL PARK



- GLEN COLLINS MEMORIAL PARK CAN BE TRANSFORMED INTO SHAWNEE'S PREMIER OUTDOOR RECREATION DESTINATION CATERING TO RESIDENTS BUT ALSO INCLUDING AMENITIES THAT ATTRACT VISITORS FROM THROUGHOUT THE OKLAHOMA CITY METROPOLITAN AREA AND BEYOND. THIS FEE-ACCESSED AREA CAN BE A SIGNIFICANT PUBLIC GATHERING SPACE THAT IS ORIENTED TOWARD LAKE SHORE ACTIVITIES WHILE OFFERING MANAGED ACCESS TO TWIN LAKE #2. FEATURES MAY INCLUDE:
- **SHORELINE INCLUSIVE PLAY AREA** THAT IS DESIGNED TO PROVIDE LAKESIDE RECREATION AND LAKE ACCESS TO ALL VISITORS WITH AN EMPHASIS ON PROVIDING FEATURES THAT CATER TO THE NEED OF THOSE WITH PHYSICAL OR DEVELOPMENTAL DISABILITIES. THE SCALE OF THIS AREA CAN VARY DEPENDING ON THE INTEND AUDIENCE.
  - **ENHANCED BOATHOUSE AREA** INCLUDING KAYAK LAUNCH, LAUNCH FOR SCULLS AND OTHER NON-MOTORIZED BOATS, AND BOATHOUSE FOR RENTALS AND STORAGE (ALSO BIKE RENTALS, FLOTATION DEVICES, ETC.).
  - **BOAT RAMP** FOR EMERGENCY VEHICLES AND BOATS WITH ELECTRIC TRAWLING MOTORS ONLY ALONG WITH RESTRICTED CHANNEL ACCESS TO PRESERVE TWIN LAKE #2 WATER QUALITY.
  - **SHORELINE RESTORATION** ALONG TWIN LAKE #1 TO PROTECT WATER QUALITY FROM EROSION. PUBLIC WATER ACCESS MAY BE RELOCATED TO A PROTECTED COVE ALONG TWIN LAKE #2.
  - **OPEN LAWN AREAS** WITH RENTAL PAVILIONS OR PICNIC FACILITIES AND POTENTIAL PAVILION FOR PUBLIC EVENTS.
  - **TRAILS NETWORK** FOR WALKING, RUNNING OR BICYCLING INCLUDING SHORT INTERNAL LOOPS AND CONNECTING TO A "LAKE LOOP" THAT TRAVERSES AROUND TWIN LAKE #2, ACROSS THE TWIN LAKE #1 LEVEE TO BOAT RAMP #1, OR TO A FUTURE TRAIL THAT FOLLOWS THE TWIN LAKES OUTFALL CHANNEL.

- **ACCOMMODATIONS** SUCH AS A LODGE, CABINS AND/OR RV SITES – THE LATTER MANAGED/MONITORED BY A CAMP HOST.
- **FUTURE "DESTINATION RECREATION"** FOR ADDITIONAL OUTDOOR RECREATION OPPORTUNITIES ALONG THE LAKESHORE THAT CAN BE MANAGED BY THE CITY OR IN PARTNERSHIP WITH PRIVATE VENDORS. MAY INCLUDE ADDITIONAL INCLUSIVE PLAY AMENITIES, ADVENTURE COURSES, BICYCLE TRACKS, ETC.
- **NATURE PRESERVE** SURROUNDING THE SITE AND THE TWIN LAKE #2 SHORELINE.

WHAT DO YOU THINK? PLEASE FILL OUT A COMMENT CARD.

