

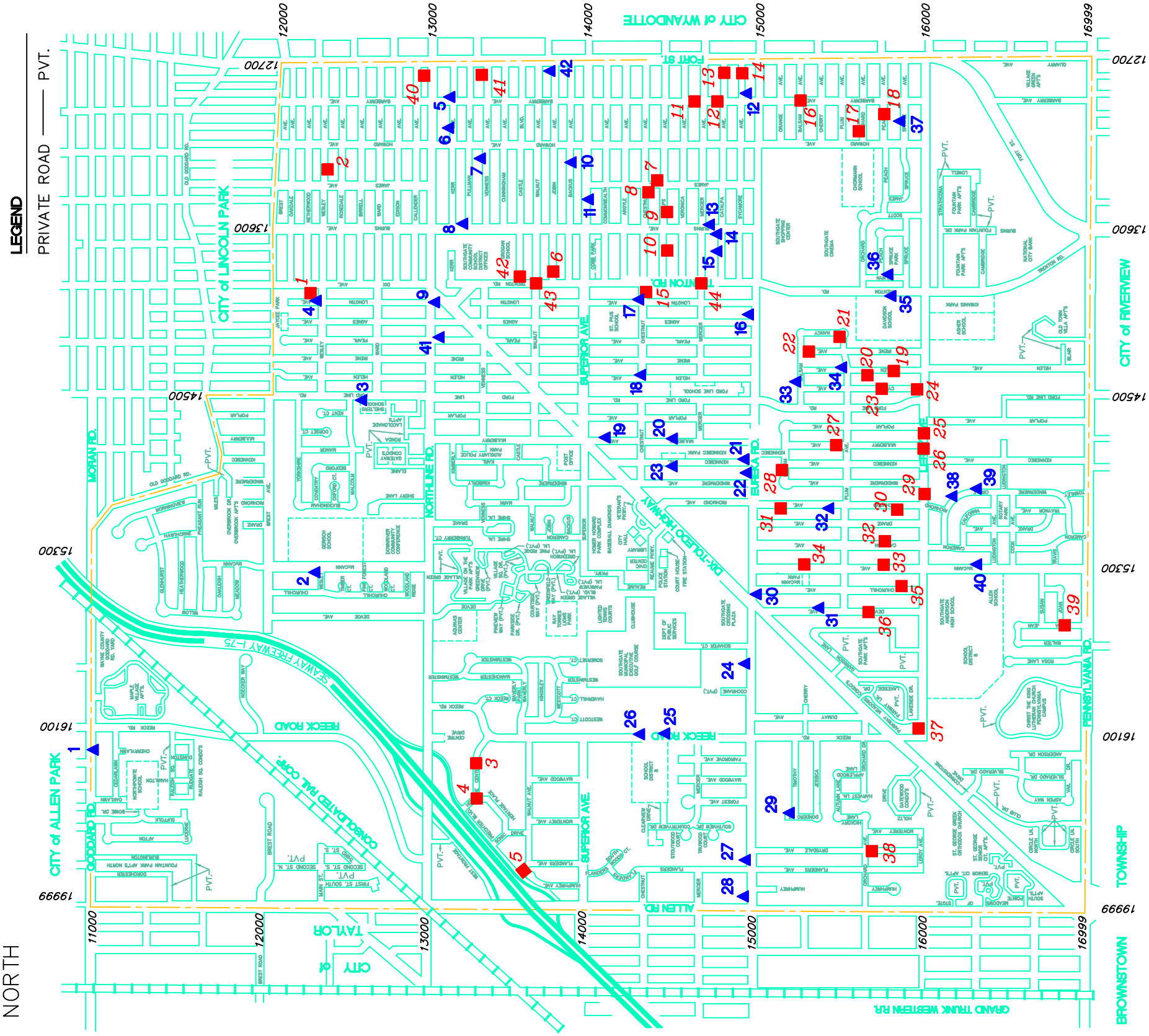
CITY OF SOUTHGATE

2023 STREET SECTIONING PROGRAM - WATER FUND (BLUE) 2023 CB and PAVEMENT REPAIR PROGRAM - STREET FUND (RED)

REVISED: 2-23-15 JMM



NORTH



LEGEND

PRIVATE ROAD ——— PVT.

▲ WATER DEPT REPAIRS (HEI JOB No. 13106.23)

1. #16185 GODDARD (WC)
2. #12280 McCANN (SIDEWALK)
3. #12600 FORDLINE - "SHELTERS SCHOOL"
4. #12269 LONGTIN (APPROACH)
5. #12778 KERR (ADA RAMP)
6. #13008 KERR (SIDEWALK)
7. #13224 VENNESS (AAPR & SWLK)
8. #13556 PULLMAN (ADA RAMP)
9. SB DIX TURN-AROUND @ N.LINE
10. #13248 BACKUS (APPROACH)
11. #13491 SUPERIOR (APPROACH)
12. #12801 SYCAMORE (SIDEWALK)
13. #14631 BURNS (SIDEWALK)
14. NW COR CATALPA & BURNS
15. #13666 CATALPA
16. #14048 EUREKA (SIDEWALK. WC)
17. CHESTNUT & LONGTIN
18. CHESTNUT & HELEN
19. #14171 MULBERRY (APPR & SWLK)
20. #14567 MULBERRY (SIDEWALK)
21. #14656 EUREKA (APPR ON KENN.)

■ STREET FUND REPAIR AREAS (HEI JOB No. 13113.23)

1. #12250 DIX "KEKO'S RESTUARANT"
2. #15800 EUREKA "MORAN AUTO" (WC)
3. HERITAGE CENTER AT "MILLS GYM"
4. HERITAGE CENTER & HERITAGE PLACE
5. WALNUT AT PRECHTER BLVD
6. #13794 JOBIN (SWRD)
7. #13380 PHELPS, ON JAMES (SWRD)
8. #13413 CHESTNUT (SWRD)
9. #13555 PHELPS
10. #13645 PHELPS (SWRD)
11. BARBERRY, BTWN MERCIER/VERONICA (SWRD)
12. #13100 CATALPA (SWRD)
13. CATALPA AT FORT ST
14. SYCAMORE AT FORT ST
15. S/S CHESTNUT, BTWN TRENTON/LONGTIN (SWRD)
16. BARBERRY & BALSAM (SWRD)
17. #13156 ORCHARD (SWRD)
18. #13025 PEACH (SWRD)
19. #15701 HELEN (SWRD)
20. #15604 HELEN (SWRD)
21. #15346 NANCY (SWRD)
22. #15219 IRENE (SWRD)
23. #15626 CYNTHIA
24. CYNTHIA AT LEROY
25. LEROY, WEST OF POPLAR
26. LEROY AT MULBERRY
27. #15354 MULBERRY
28. #14720 BALSAM (SIDEWALK)
29. LEROY, BTWN RICHMOND/WINDERMERE
30. #15716 RICHMOND
31. #15102 RICHMOND
32. #15621 CAMERON
33. #15651 McCANN
34. #15131 McCANN
35. #15709 CHURCHILL
36. #15451 DEVOE
37. LEROY, WEST OF PARKWAY DR
38. DRYSDALE, SOUTH OF ORCHARD
39. MELBA JEAN
40. #12916 NORTHLINE, "SUBI'S"
41. FORT ALLEY @ N/S VENNESS
42. CASTLE/TRENTON ADA RAMPS
43. WALNUT/TRENTON ADA RAMPS
44. MERCIER/TRENTON ADA RAMPS