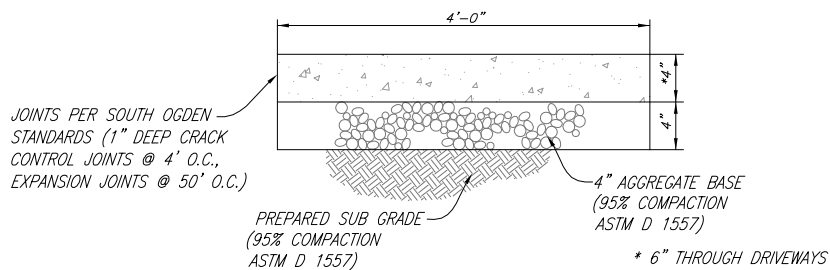


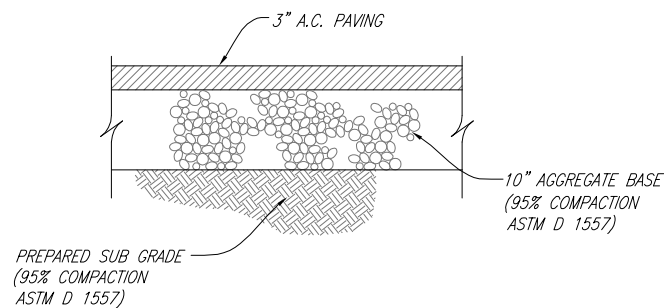
**CURB & GUTTER SECTION**

N.T.S.



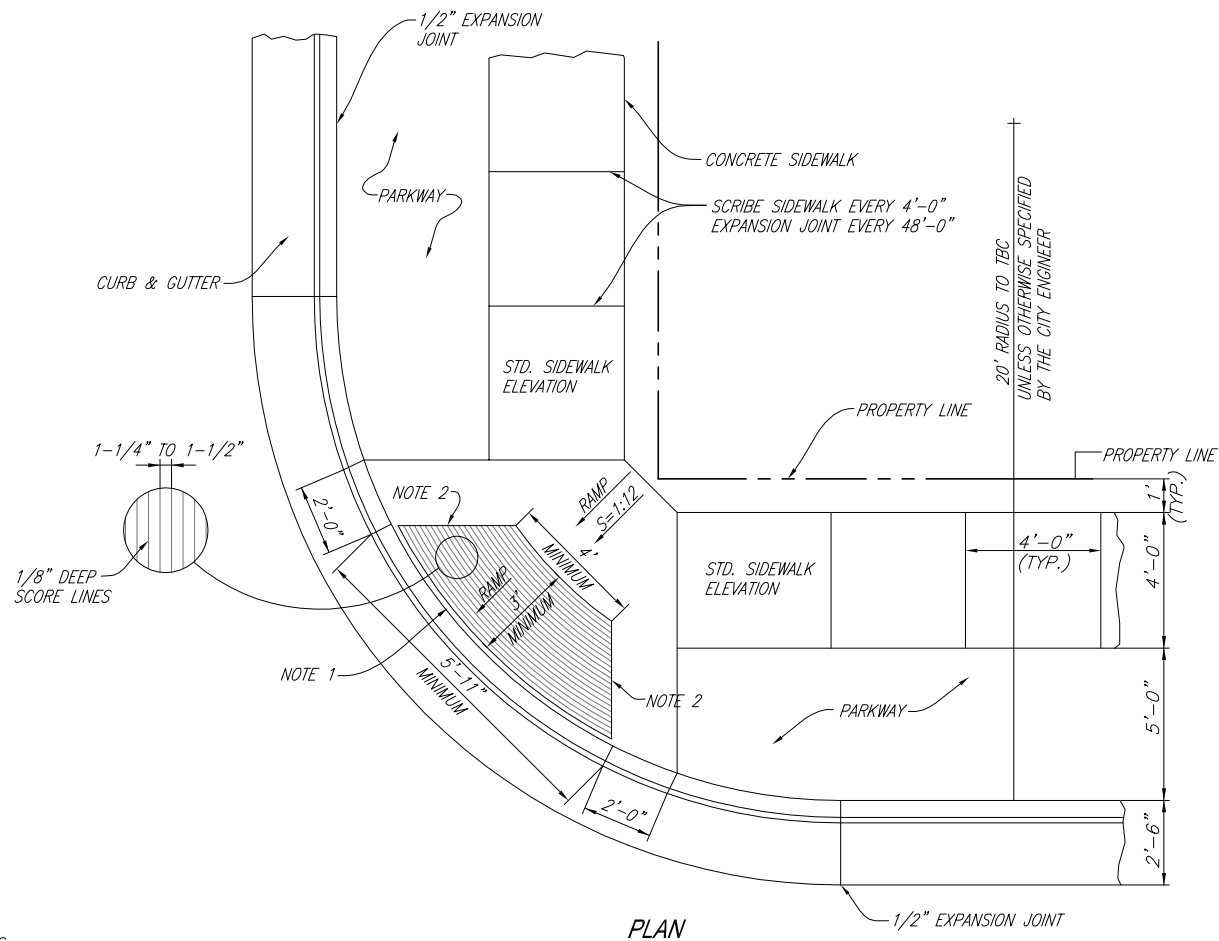
**TYPICAL SIDEWALK**

N.T.S.



**TYPICAL ASPHALT PAVING SECTION**

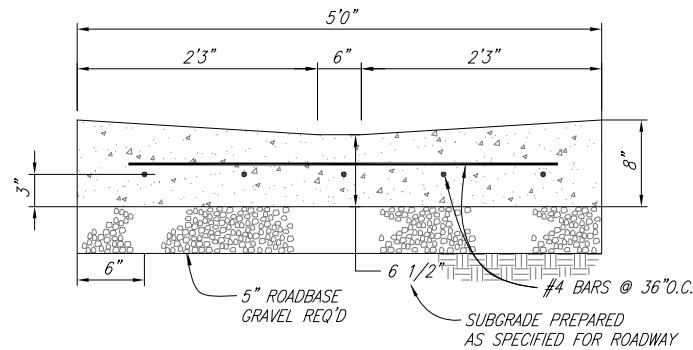
N.T.S.



**PLAN**

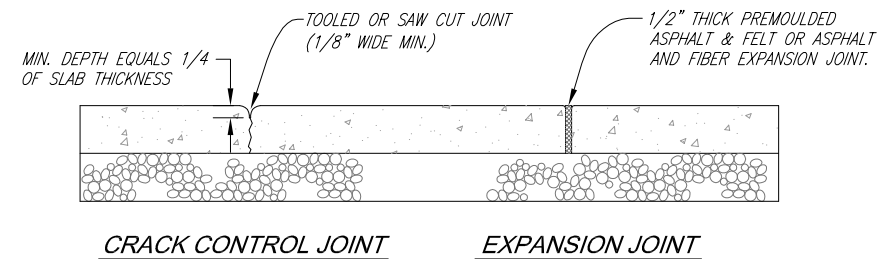
**TYPICAL WHEEL CHAIR RAMP**

N.T.S.



**CROSS DRAIN SECTION**

N.T.S.



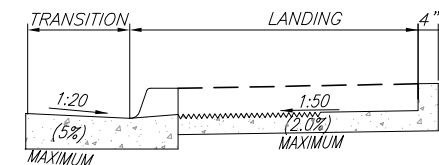
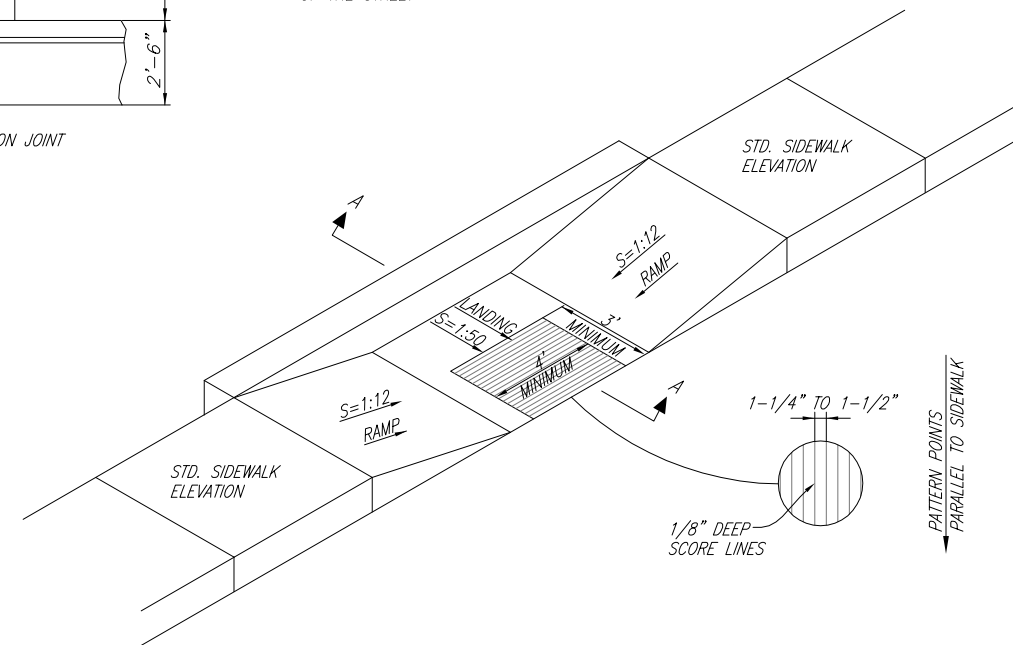
**CRACK CONTROL JOINT EXPANSION JOINT**

**JOINT DETAIL**

N.T.S.

NOTE:

1. RUN 2" WIDE CONCRETE EDGE STRIP AROUND DETECTABLE WARNING SURFACE.
2. ALIGN TOOLED EDGE OF IMPRINTED CONCRETE SURFACE WITH SIDEWALK ON THE OTHER SIDE OF THE STREET

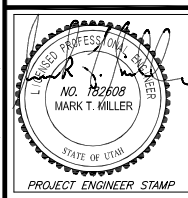


**SECTION A-A**

**TYPICAL H.C. RAMP**

N.T.S.

WC-CAD\07-SOC\800-CITY-STNDS\PUBLIC-WORKS\DWG\SO-STD-04.DWG



**WASATCH CIVIL**  
Consulting Engineering  
5320 SOUTH 1950 WEST, SUITE 1  
ROY CITY, UT 84067 (801) 775-9191

REV.	DATE	APPR.

DESIGNED M.T.M. DATE JAN. 23, 2004  
DRAWN C.C.S. SCALE: NOT TO SCALE  
CHECKED M.T.M.

**SOUTH OGDEN CITY CORPORATION**

**PUBLIC WORKS STANDARDS**  
**TYPICAL WHEELCHAIR RAMP & CURB DETAILS**

SHEET: **4**  
OF 17 SHEETS