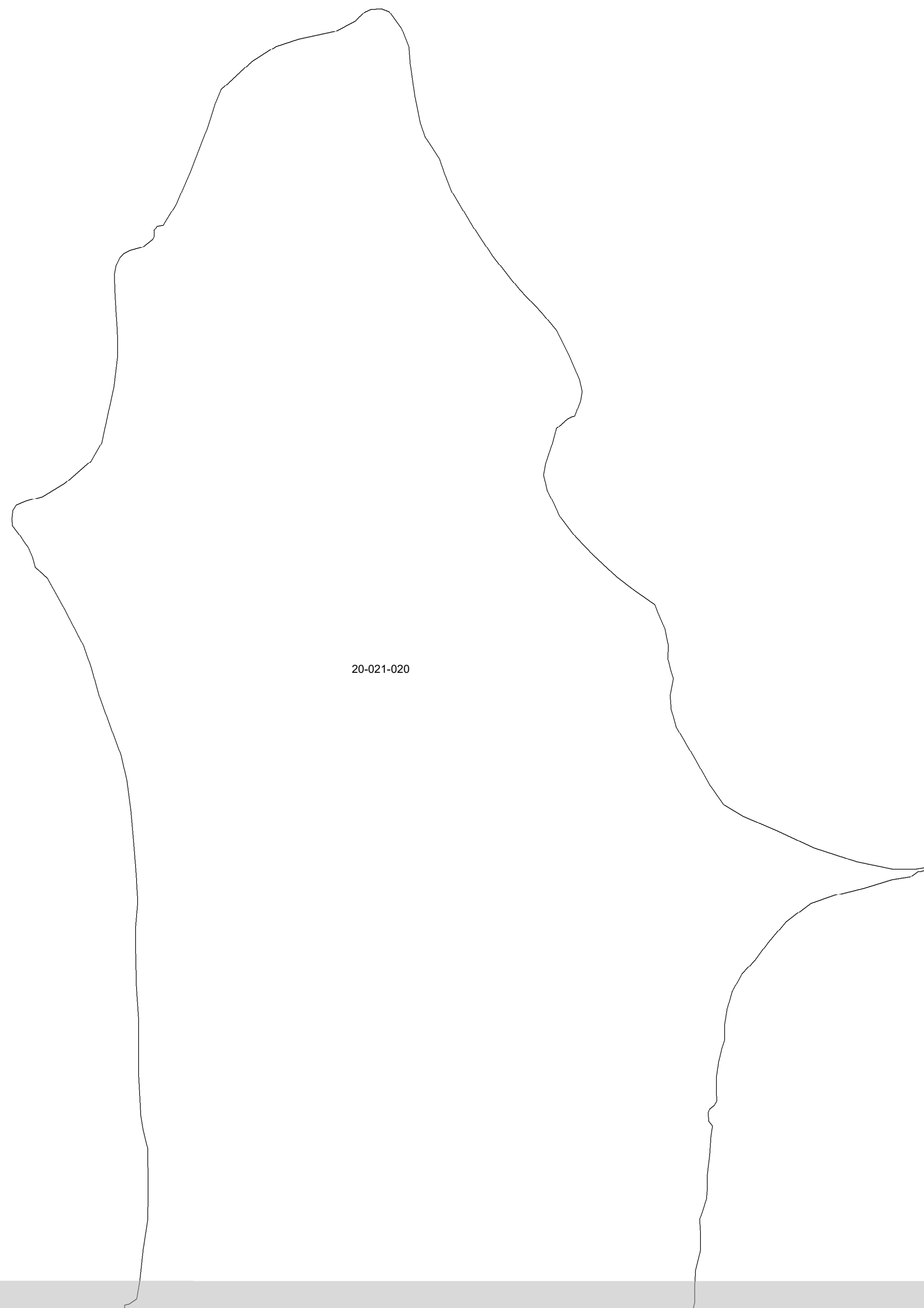
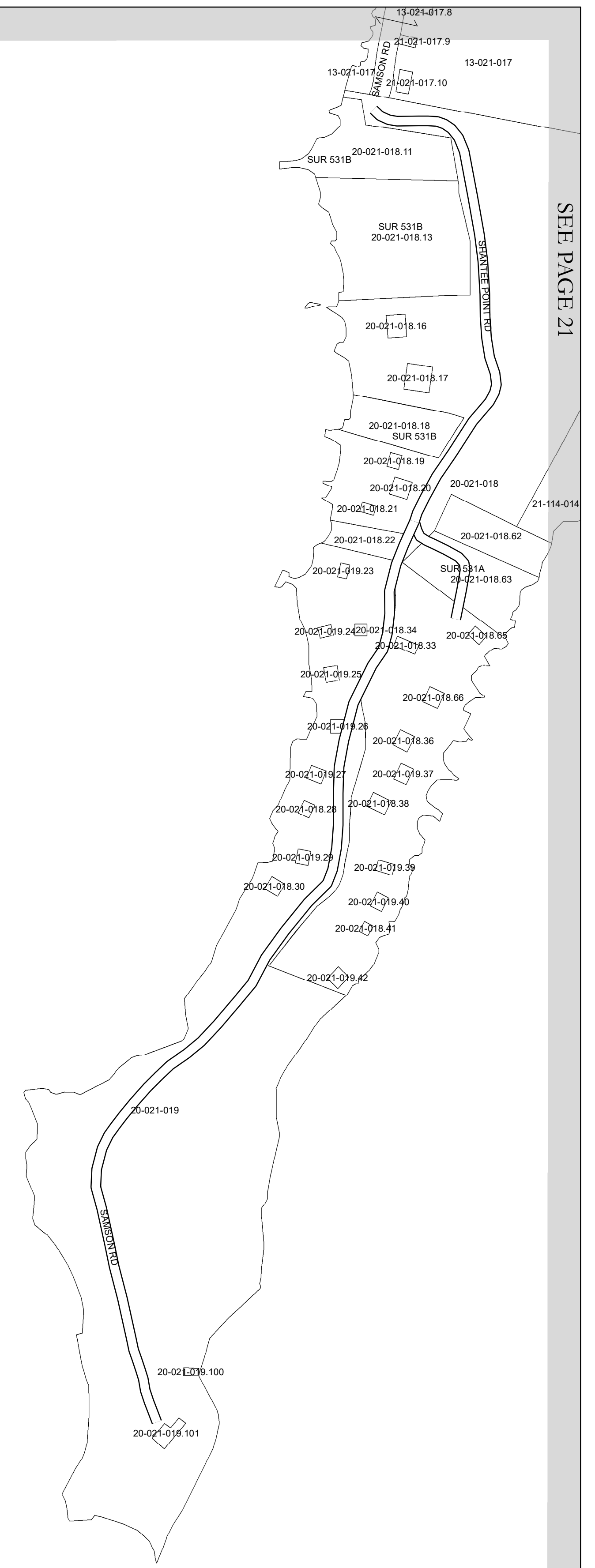
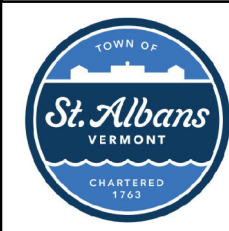


LAKE CHAMPLAIN

20



SEE PAGE 30



PARCEL MAP
TOWN OF ST. ALBANS
PREPARED BY
DEPARTMENT OF COMMUNITY DEVELOPMENT
ST. ALBANS, VERMONT
(802) 524-7589
FOR THE EXCLUSIVE USE OF THE TOWN OF ST. ALBANS

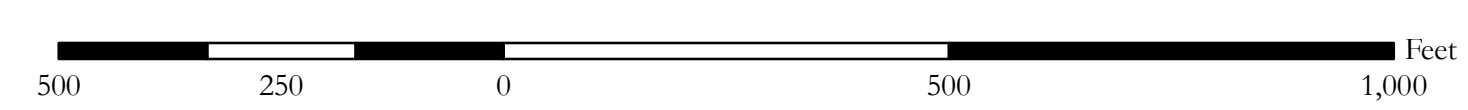
THIS MAP IS FOR ASSESSMENT PURPOSES ONLY.
IT IS NOT TO BE USED FOR DESCRIPTION OR
CONVEYANCE OF PROPERTY

REVISION TABLE		
DATE	MADE BY	CHANGES OR ADDITIONS

LEGEND	
	PROPERTY LINE
	STREAM
	TOWN BOUNDARY
	RAILROAD
05-081-018 (SUR)	TAX MAP NUMBER SURVEYED PARCEL

N
MAP ORIENTATION
VERMONT GRID NORTH
(NAD 83)

TOWN OF ST. ALBANS	
TOWN OF NORTH (HEM)	TOWN OF SOUTH (HEM)
1	2
3	4



TOWN OF ST. ALBANS SHEET NO. 20