








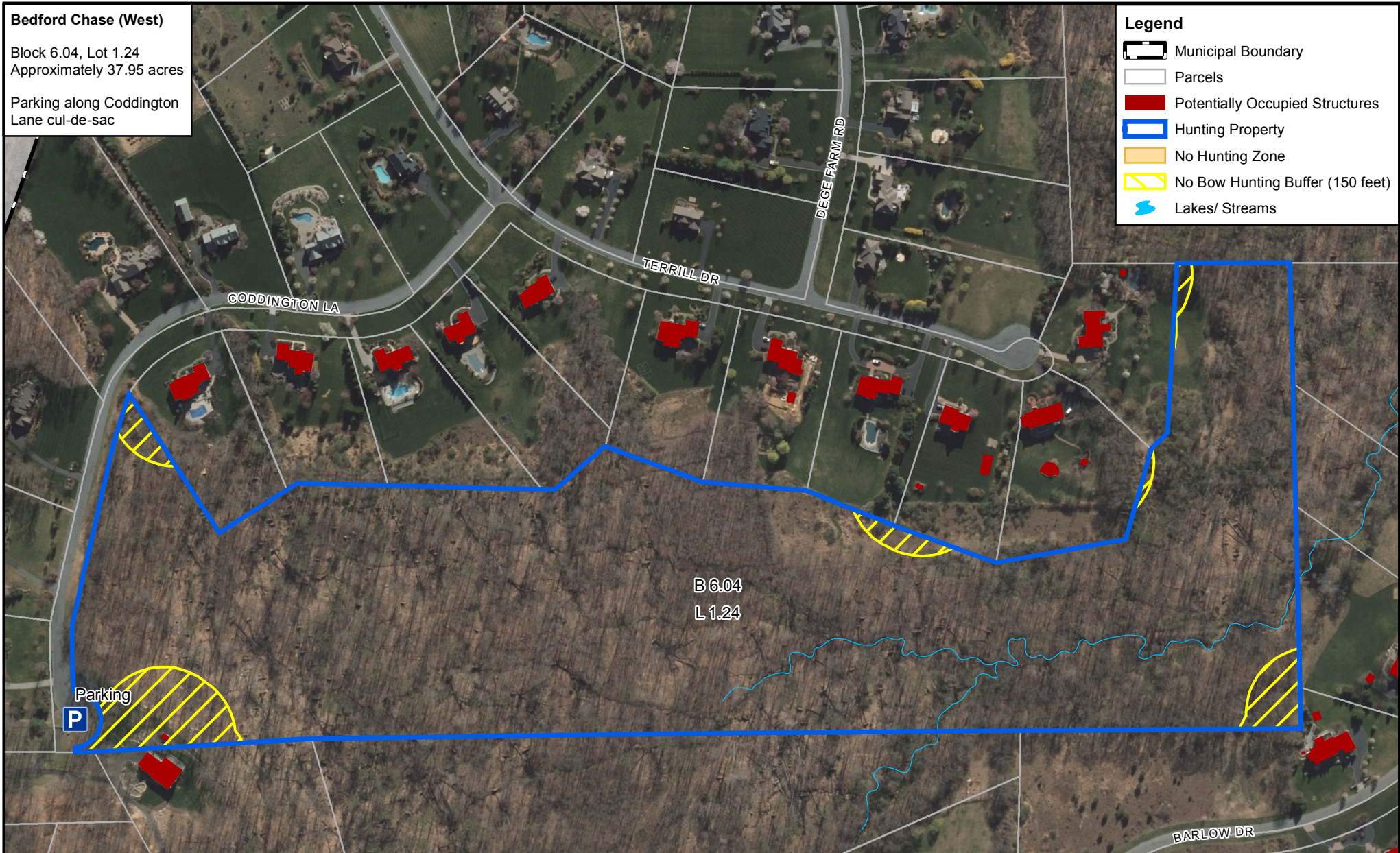
Bedford Chase (West)

Block 6.04, Lot 1.24
Approximately 37.95 acres

Parking along Coddington
Lane cul-de-sac

Legend

-  Municipal Boundary
-  Parcels
-  Potentially Occupied Structures
-  Hunting Property
-  No Hunting Zone
-  No Bow Hunting Buffer (150 feet)
-  Lakes/ Streams



Note: All Firearms Hunters must maintain a distance of 450 feet from any potentially occupied structure and school playgrounds. All Bow Hunters must maintain a distance of 150 feet from any potentially occupied structure and 450 feet from any school and school playgrounds. This map is intended to serve as a general guideline as to the boundaries and safety zones. Tewksbury Township does not guarantee that the information is 100% accurate. Ultimately, the hunter is responsible for adhering to safety zone standards while hunting.



BEDFORD CHASE (WEST) HUNTING AREA

TOWNSHIP OF TEWKSBURY
HUNTERDON COUNTY, NEW JERSEY



0 150 300
Feet

Scale: 1 inch = 300 feet

Date: May 2018

MC Project No: TBT-001A