

Christie Hoffman Farm

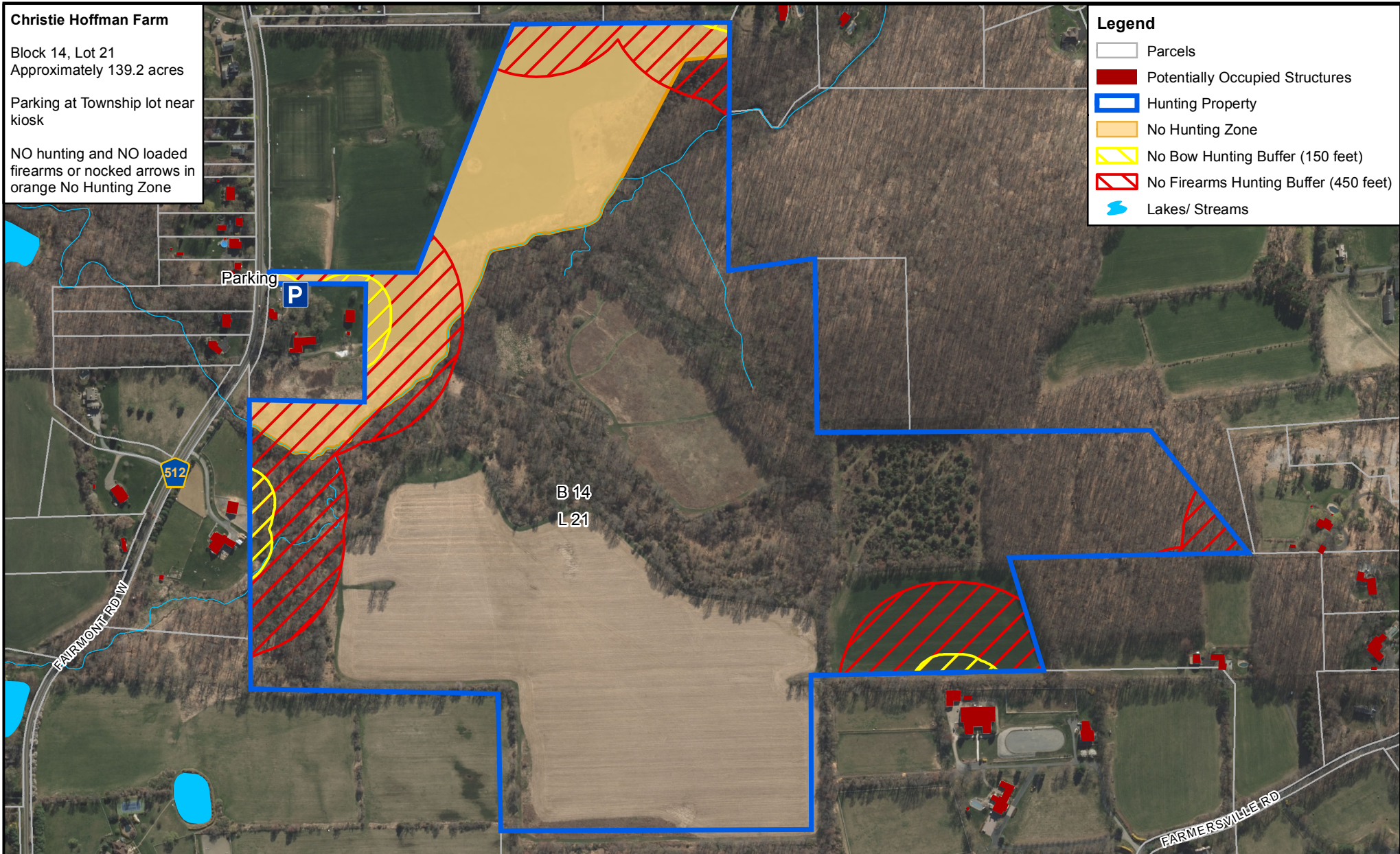
Block 14, Lot 21
Approximately 139.2 acres

Parking at Township lot near
kiosk

NO hunting and NO loaded
firearms or nocked arrows in
orange No Hunting Zone

Legend

- Parcels
- Potentially Occupied Structures
- Hunting Property
- No Hunting Zone
- No Bow Hunting Buffer (150 feet)
- No Firearms Hunting Buffer (450 feet)
- Lakes/ Streams



Note: All Firearms Hunters must maintain a distance of 450 feet from any potentially occupied structure and school playgrounds. All Bow Hunters must maintain a distance of 150 feet from any potentially occupied structure and 450 feet from any school and school playgrounds. This map is intended to serve as a general guideline as to the boundaries and safety zones. Tewksbury Township does not guarantee that the information is 100% accurate. Ultimately, the hunter is responsible for adhering to safety zone standards while hunting.



CHRISTIE HOFFMAN FARM HUNTING AREA

TOWNSHIP OF TEWKSBURY
HUNTERDON COUNTY, NEW JERSEY



0 275 550
Feet

Scale: 1 inch = 550 feet

Date: May 2018

MC Project No: TBT-001A