

Hell Mountain Preserve

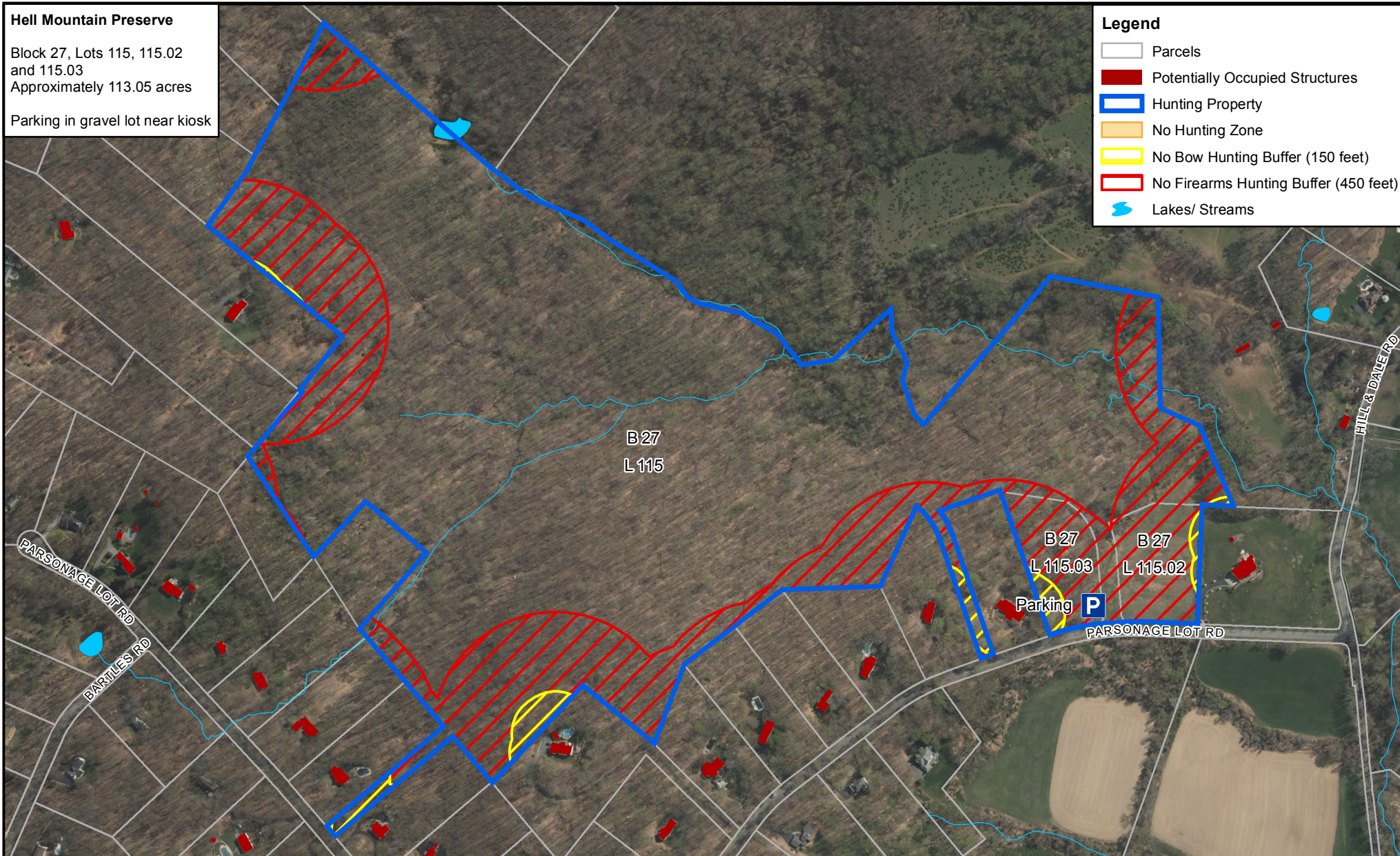
Block 27, Lots 115, 115.02
and 115.03

Approximately 113.05 acres

Parking in gravel lot near kiosk

Legend

- Parcels
- Potentially Occupied Structures
- Hunting Property
- No Hunting Zone
- No Bow Hunting Buffer (150 feet)
- No Firearms Hunting Buffer (450 feet)
- Lakes/ Streams

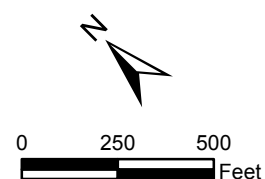


Note: All Firearms Hunters must maintain a distance of 450 feet from any potentially occupied structure and school playgrounds. All Bow Hunters must maintain a distance of 150 feet from any potentially occupied structure and 450 feet from any school and school playgrounds. This map is intended to serve as a general guideline as to the boundaries and safety zones. Tewksbury Township does not guarantee that the information is 100% accurate. Ultimately, the hunter is responsible for adhering to safety zone standards while hunting.



HELL MOUNTAIN PRESERVE HUNTING AREA

TOWNSHIP OF TEWKSBURY
HUNTERDON COUNTY, NEW JERSEY



Scale: 1 inch = 500 feet

Date: May 2018

MC Project No: TBT-001A