

Pace Farm Open Space

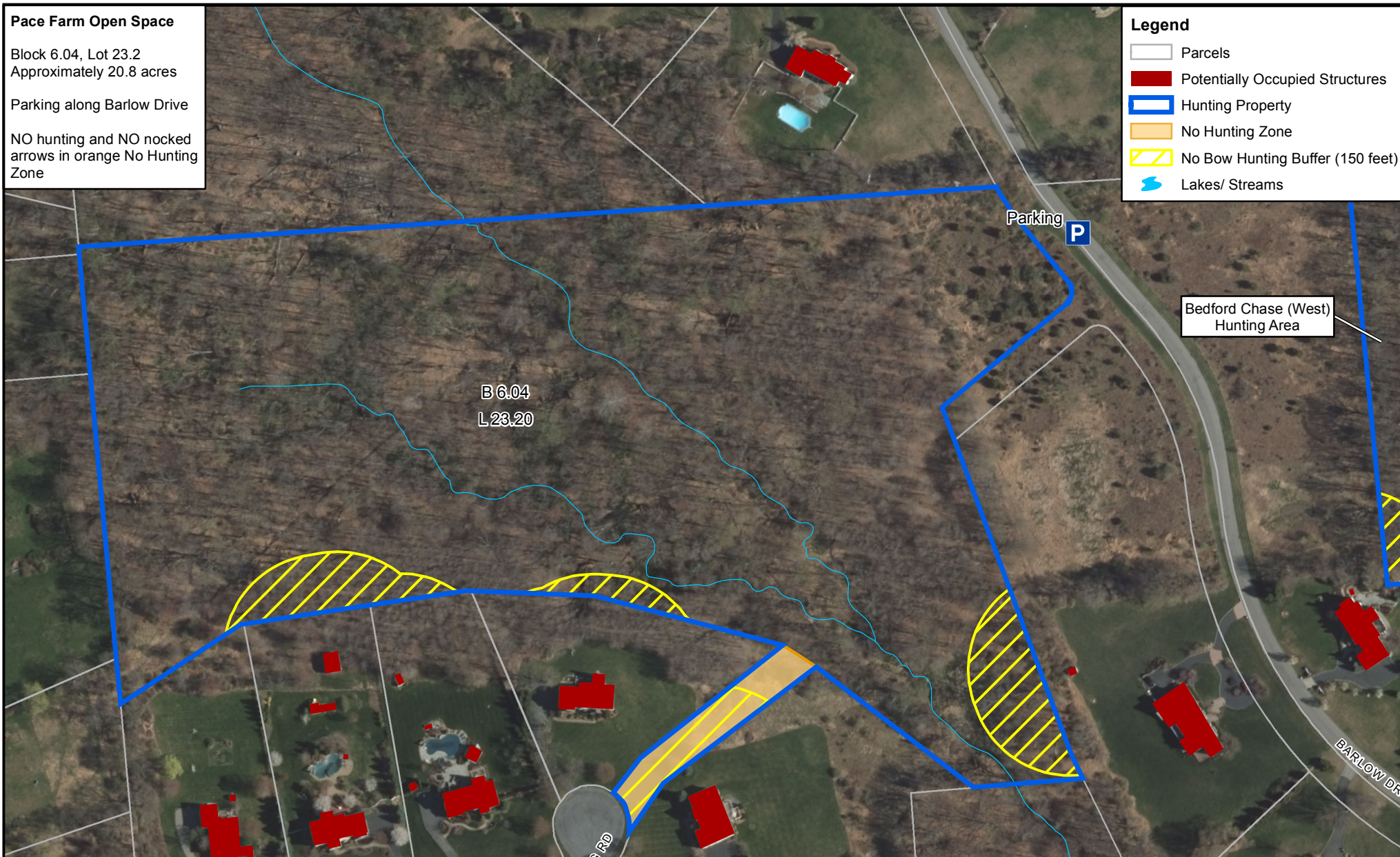
Block 6.04, Lot 23.2
Approximately 20.8 acres

Parking along Barlow Drive

NO hunting and NO nocked
arrows in orange No Hunting
Zone

Legend

- Parcels
- Potentially Occupied Structures
- Hunting Property
- No Hunting Zone
- No Bow Hunting Buffer (150 feet)
- Lakes/ Streams

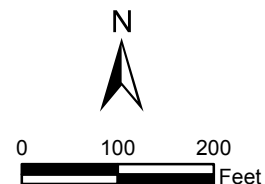


Note: All Firearms Hunters must maintain a distance of 450 feet from any potentially occupied structure and school playgrounds. All Bow Hunters must maintain a distance of 150 feet from any potentially occupied structure and 450 feet from any school and school playgrounds. This map is intended to serve as a general guideline as to the boundaries and safety zones. Tewksbury Township does not guarantee that the information is 100% accurate. Ultimately, the hunter is responsible for adhering to safety zone standards while hunting.



**PACE FARM OPEN SPACE
HUNTING AREA**

TOWNSHIP OF TEWKSBURY
HUNTERDON COUNTY, NEW JERSEY



Scale: 1 inch = 200 feet

Date: May 2018

MC Project No: TBT-001A