

Pottersville Reservoir

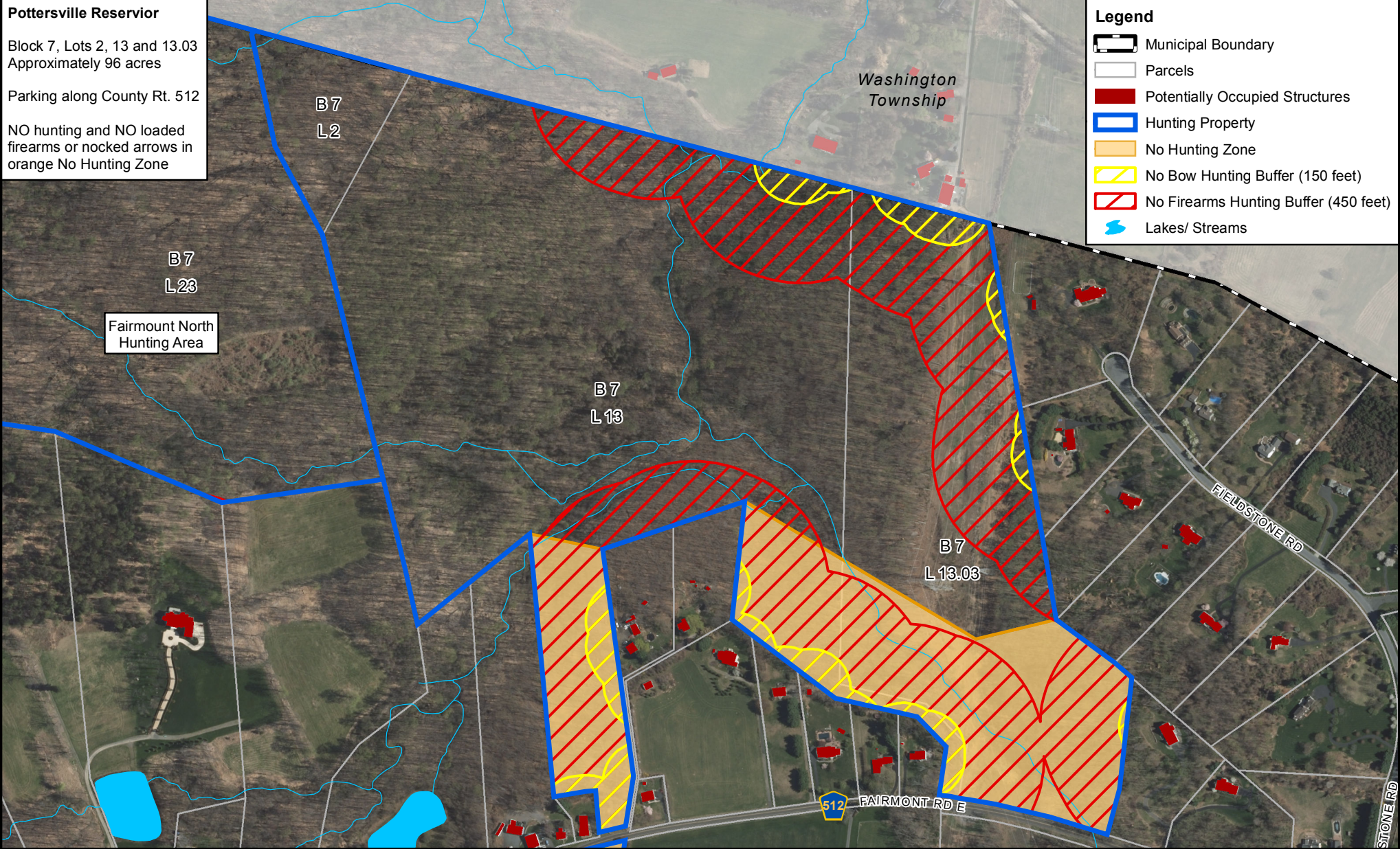
Block 7, Lots 2, 13 and 13.03
Approximately 96 acres

Parking along County Rt. 512

NO hunting and NO loaded firearms or nocked arrows in orange No Hunting Zone

Legend

- Municipal Boundary
- Parcels
- Potentially Occupied Structures
- Hunting Property
- No Hunting Zone
- No Bow Hunting Buffer (150 feet)
- No Firearms Hunting Buffer (450 feet)
- Lakes/ Streams

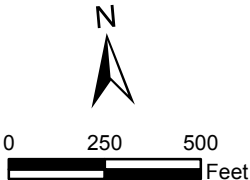


Note: All Firearms Hunters must maintain a distance of 450 feet from any potentially occupied structure and school playgrounds. All Bow Hunters must maintain a distance of 150 feet from any potentially occupied structure and 450 feet from any school and school playgrounds. This map is intended to serve as a general guideline as to the boundaries and safety zones. Tewksbury Township does not guarantee that the information is 100% accurate. Ultimately, the hunter is responsible for adhering to safety zone standards while hunting.



**POTTERSVILLE RESERVOIR
HUNTING AREA**

TOWNSHIP OF TEWKSBURY
HUNTERDON COUNTY, NEW JERSEY



Scale: 1 inch = 500 feet

Date: May 2018

MC Project No: TBT-001A