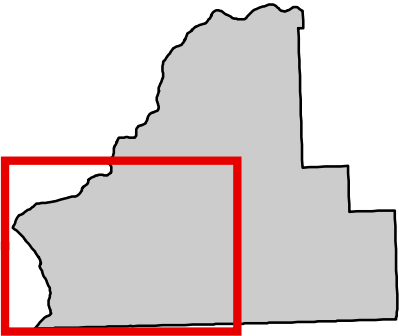
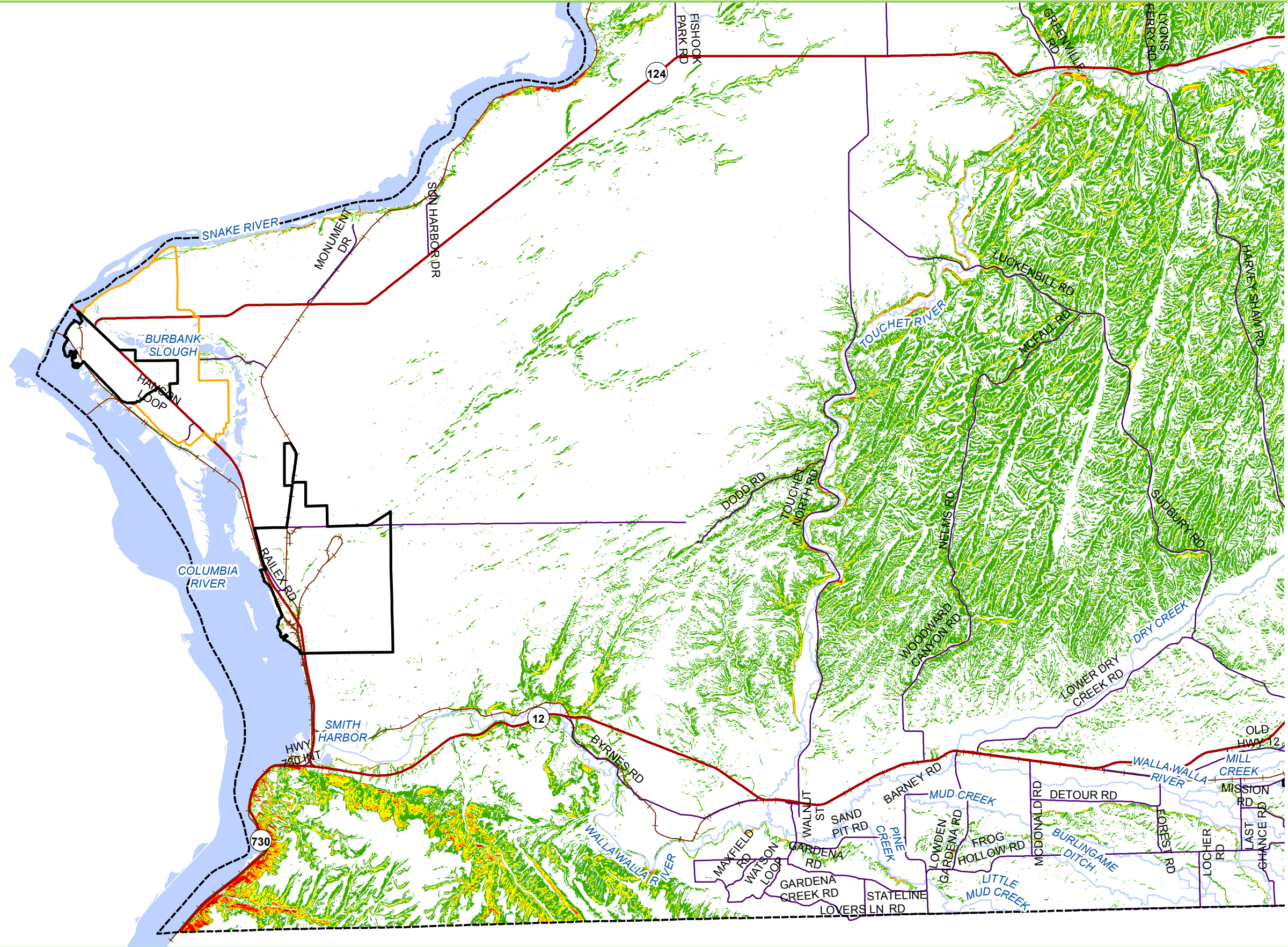


GEOLOGICALLY HAZARDOUS AREAS - Steep Slopes - Southwest County



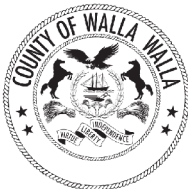
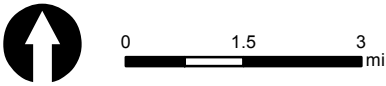
BASE MAP LAYERS

- County Boundary
- Urban Growth Area
- Burbank Rural Activity Center
- State Highway
- Public Road
- Railroads
- Streams
- Rivers/Water Bodies

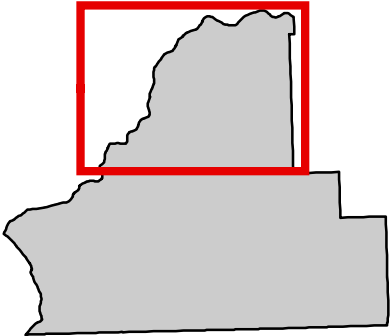
STEEP SLOPES

- Landslide Hazard Areas¹
- Percent Slope²
 - 0<15
 - 15<30
 - 30<45
 - 45<60
 - 60<80
 - >80

1. As designated and mapped by Walla Walla County.
2. Areas with slopes steeper than fifteen percent may be designated as erosion hazard areas or landslide hazard areas, depending on other site-specific factors, per Walla Walla County Code Chapter 18.08.



GEOLOGICALLY HAZARDOUS AREAS - Steep Slopes - North County



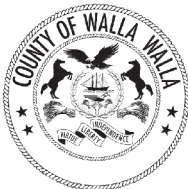
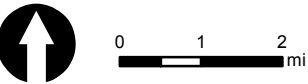
BASE MAP LAYERS

- County Boundary
- Incorporated Area
- Urban Growth Area
- State Highway
- Public Road
- Railroads
- Streams
- Rivers/Water Bodies

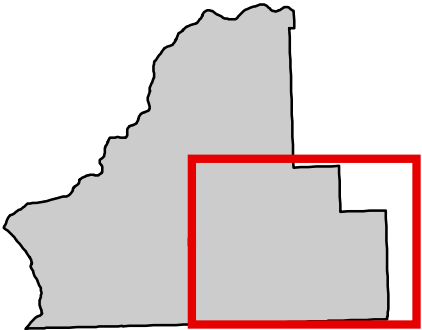
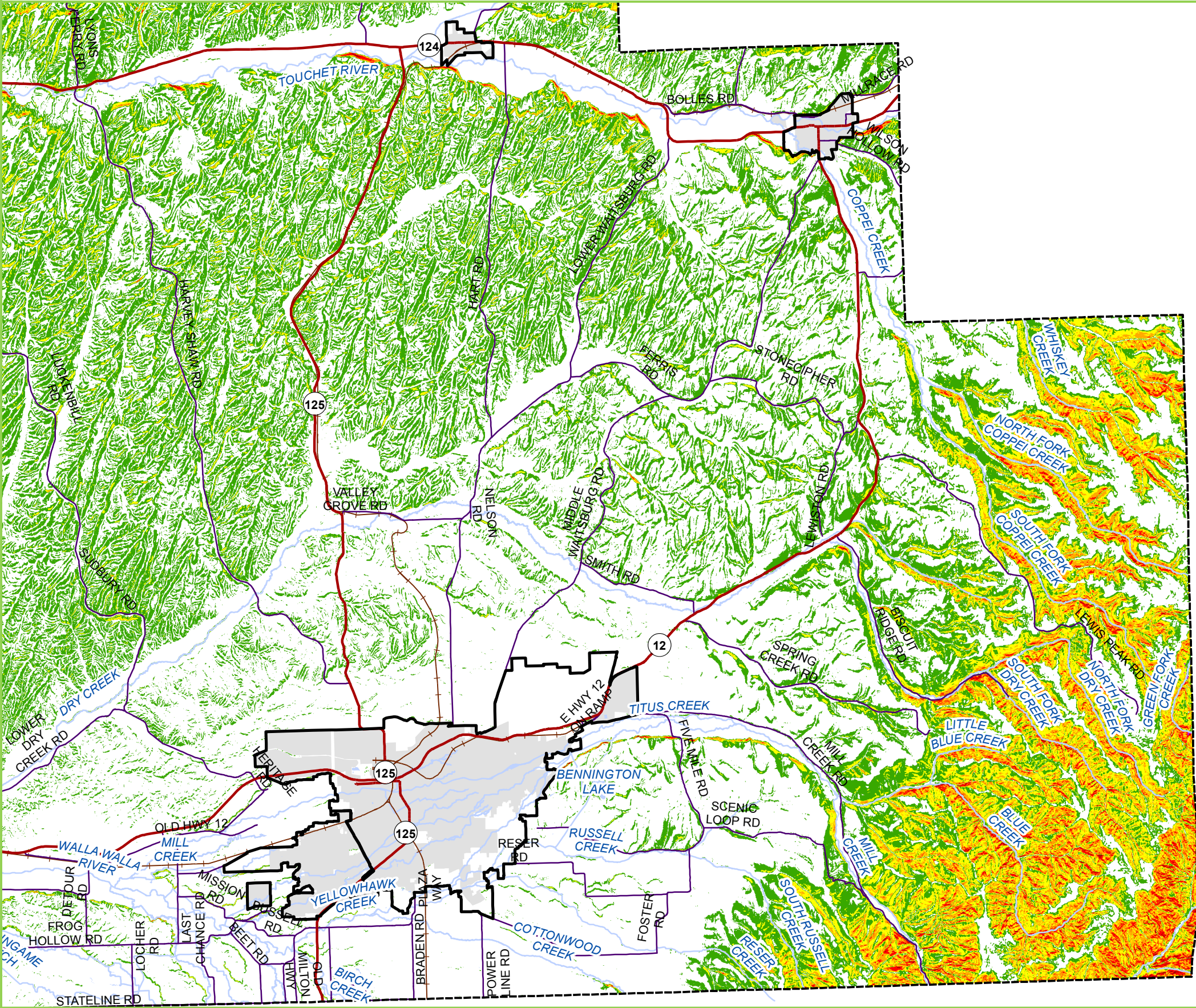
STEEP SLOPES

- Landslide Hazard Areas¹
- Percent Slope²
 - 0<15
 - 15<30
 - 30<45
 - 45<60
 - 60<80
 - >80

1. As designated and mapped by Walla Walla County.
2. Areas with slopes steeper than fifteen percent may be designated as erosion hazard areas or landslide hazard areas, depending on other site-specific factors, per Walla Walla County Code Chapter 18.08.



GEOLOGICALLY HAZARDOUS AREAS - Steep Slopes - Southeast County



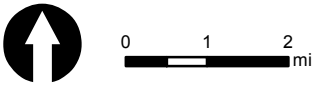
BASE MAP LAYERS

- County Boundary
- Incorporated Area
- Urban Growth Area
- State Highway
- Public Road
- Railroads
- Streams
- Rivers/Water Bodies

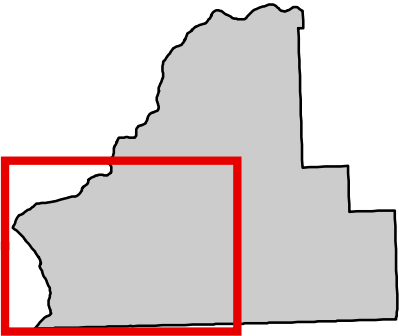
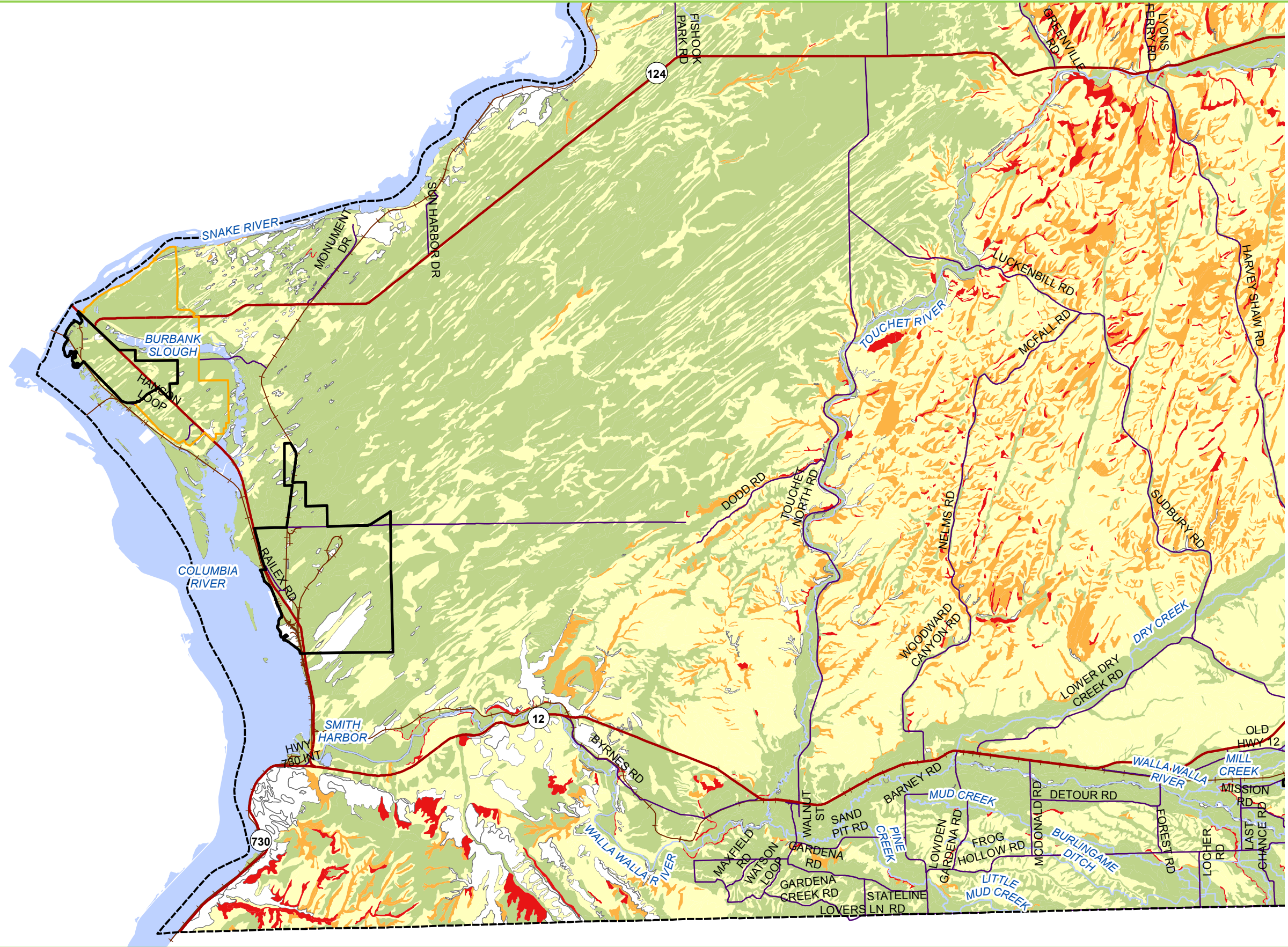
STEEP SLOPES

- Landslide Hazard Areas¹
- Percent Slope²
 - 0<15
 - 15<30
 - 30<45
 - 45<60
 - 60<80
 - >80

1. As designated and mapped by Walla Walla County.
2. Areas with slopes steeper than fifteen percent may be designated as erosion hazard areas or landslide hazard areas, depending on other site-specific factors, per Walla Walla County Code Chapter 18.08.



EROSION HAZARD AREAS - Potential Soil Erosion Susceptibility - Southwest County



BASE MAP LAYERS

- County Boundary
- Urban Growth Area
- Burbank Rural Activity Center
- State Highway
- Public Road
- Railroads
- Streams
- Rivers/Water Bodies

POTENTIAL SOIL EROSION SUSCEPTIBILITY¹

- Not rated
- Slight
- Moderate
- Severe²
- Very severe²

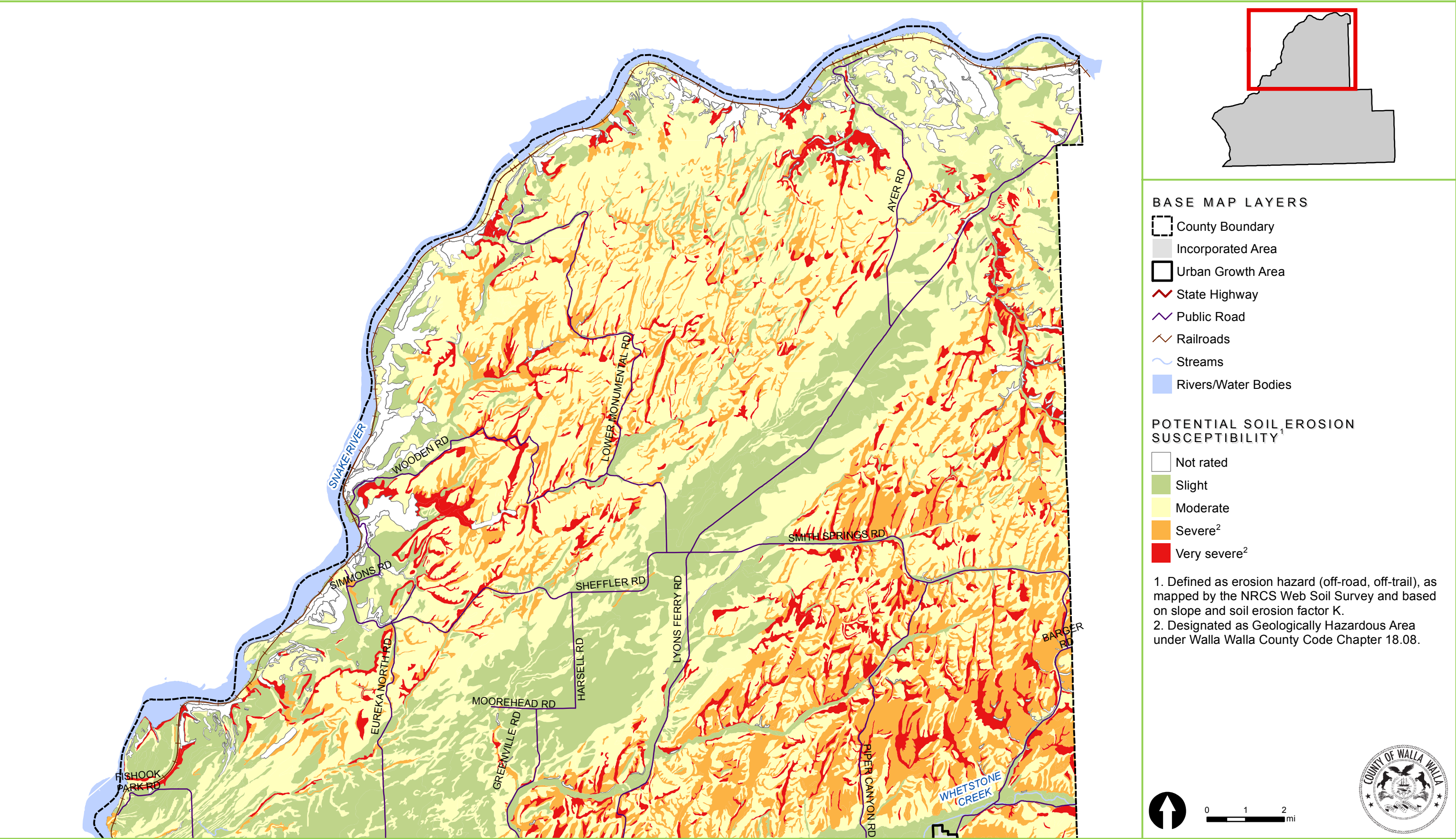
1. Defined as erosion hazard (off-road, off-trail), as mapped by the NRCS Web Soil Survey and based on slope and soil erosion factor K.
2. Designated as Geologically Hazardous Area under Walla Walla County Code Chapter 18.08.



0 1.5 3 mi



EROSION HAZARD AREAS - Potential Soil Erosion Susceptibility - North County



EROSION HAZARD AREAS - Potential Soil Erosion Susceptibility - Southeast County

