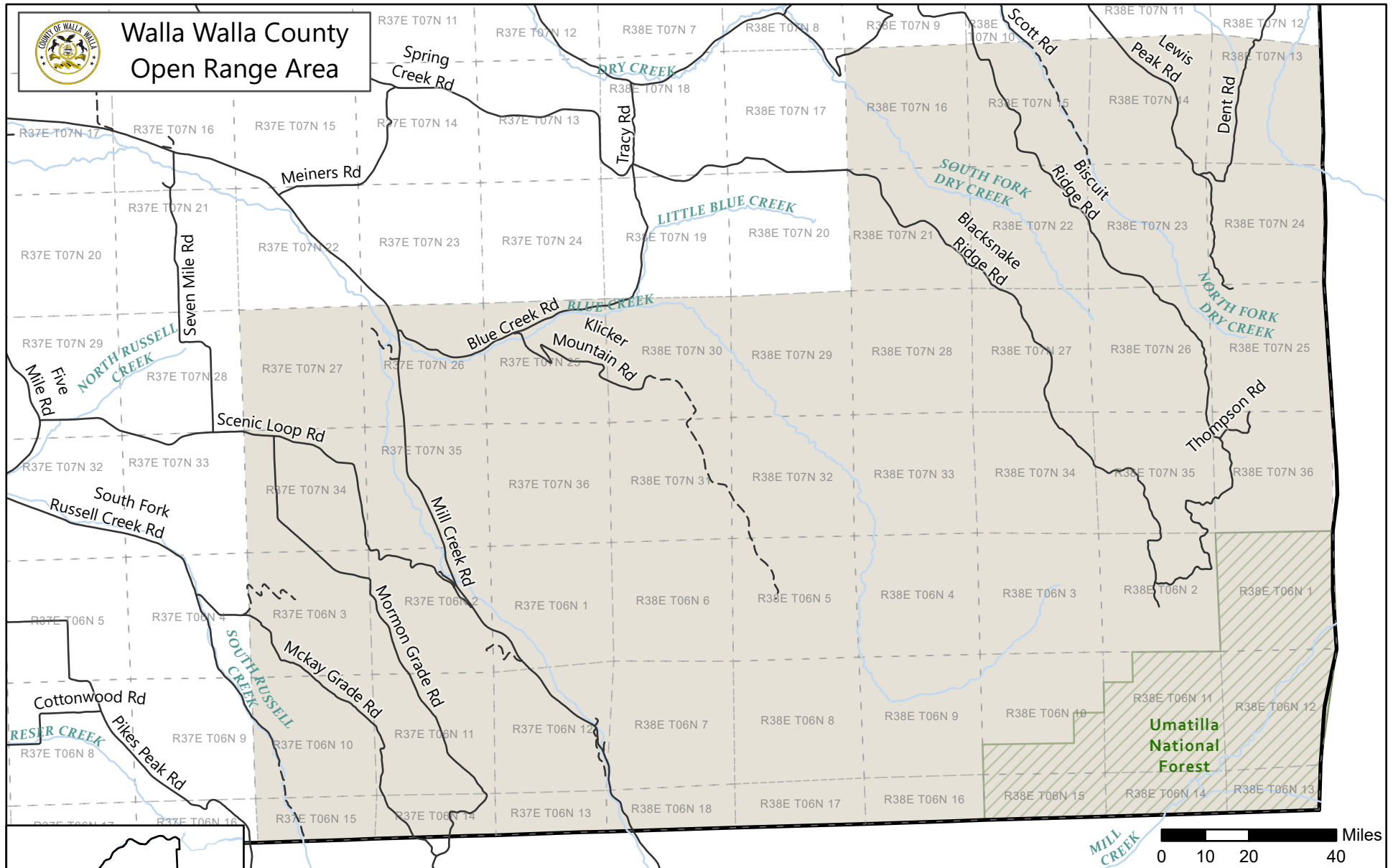




Walla Walla County Open Range Area



Open Range Area established by Ordinance 174, established on January 31, 1984. Area description found in County Municipal Code 6.08.010.

- Open Range Area
- Public Roads
- Streams
- State Highway
- Private Roads
- Sections



Disclaimer: Please be advised that the data contained in Walla Walla County's Geographic Information System (GIS) is subject to constant change and that Walla Walla County, its agents, consultants, contractors, or employees collectively referred to as "the County" do not guarantee that the information presented is accurate or complete. All data contained in the County's GIS is provided by the County AS IS without warranty of any kind, implied or express, as to the information being accurate or complete. With knowledge of the foregoing, by proceeding to use the County's GIS, each user agrees to waive, release and indemnify Walla Walla County, its agents, consultants, contractors or employees from any and all claims, actions, or causes of action for damages or injury to persons or property arising from the use or inability to use Walla Walla County's GIS data. Walla Walla County will not be responsible for any data distributed by others. The release of data to the requestor does not authorize the party to redistribute or resell or act as an agent for any data received from the County.