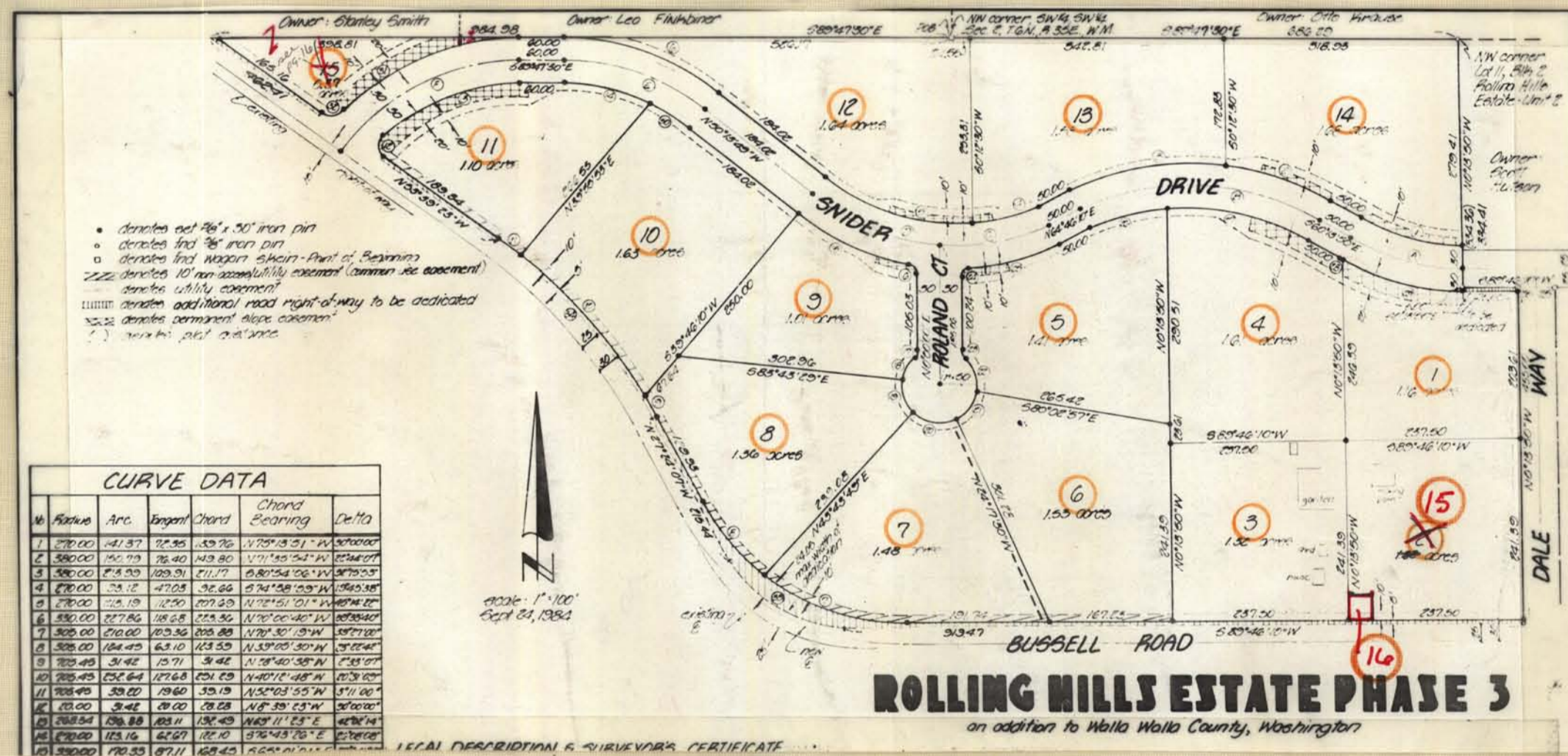


ROLLING HILLS ESTATES #3

35-06-02  
-03



**CURVE DATA**

No.	Radius	Arc	Tangent	Chord	Chord Bearing	Delta
1	270.00	241.37	27.55	43.25	N 70° 13' 31" W	90° 00' 00"
2	300.00	250.79	28.40	43.80	N 71° 40' 52" W	90° 00' 00"
3	350.00	274.00	32.28	51.77	N 82° 54' 02" W	90° 00' 00"
4	470.00	354.12	47.24	70.64	S 74° 48' 03" W	90° 00' 00"
5	470.00	354.12	47.24	70.64	N 74° 51' 02" W	90° 00' 00"
6	350.00	274.00	32.28	51.77	N 70° 00' 00" W	90° 00' 00"
7	300.00	250.79	28.40	43.80	N 72° 07' 02" W	90° 00' 00"
8	300.00	250.79	28.40	43.80	N 72° 07' 02" W	90° 00' 00"
9	300.00	250.79	28.40	43.80	N 72° 07' 02" W	90° 00' 00"
10	300.00	250.79	28.40	43.80	N 72° 07' 02" W	90° 00' 00"
11	300.00	250.79	28.40	43.80	N 72° 07' 02" W	90° 00' 00"
12	300.00	250.79	28.40	43.80	N 72° 07' 02" W	90° 00' 00"
13	300.00	250.79	28.40	43.80	N 72° 07' 02" W	90° 00' 00"
14	300.00	250.79	28.40	43.80	N 72° 07' 02" W	90° 00' 00"
15	300.00	250.79	28.40	43.80	N 72° 07' 02" W	90° 00' 00"
16	300.00	250.79	28.40	43.80	N 72° 07' 02" W	90° 00' 00"

**ROLLING HILLS ESTATE PHASE 3**  
an addition to Walla Walla County, Washington

LEGAL DESCRIPTION & SURVEYORS CERTIFICATE