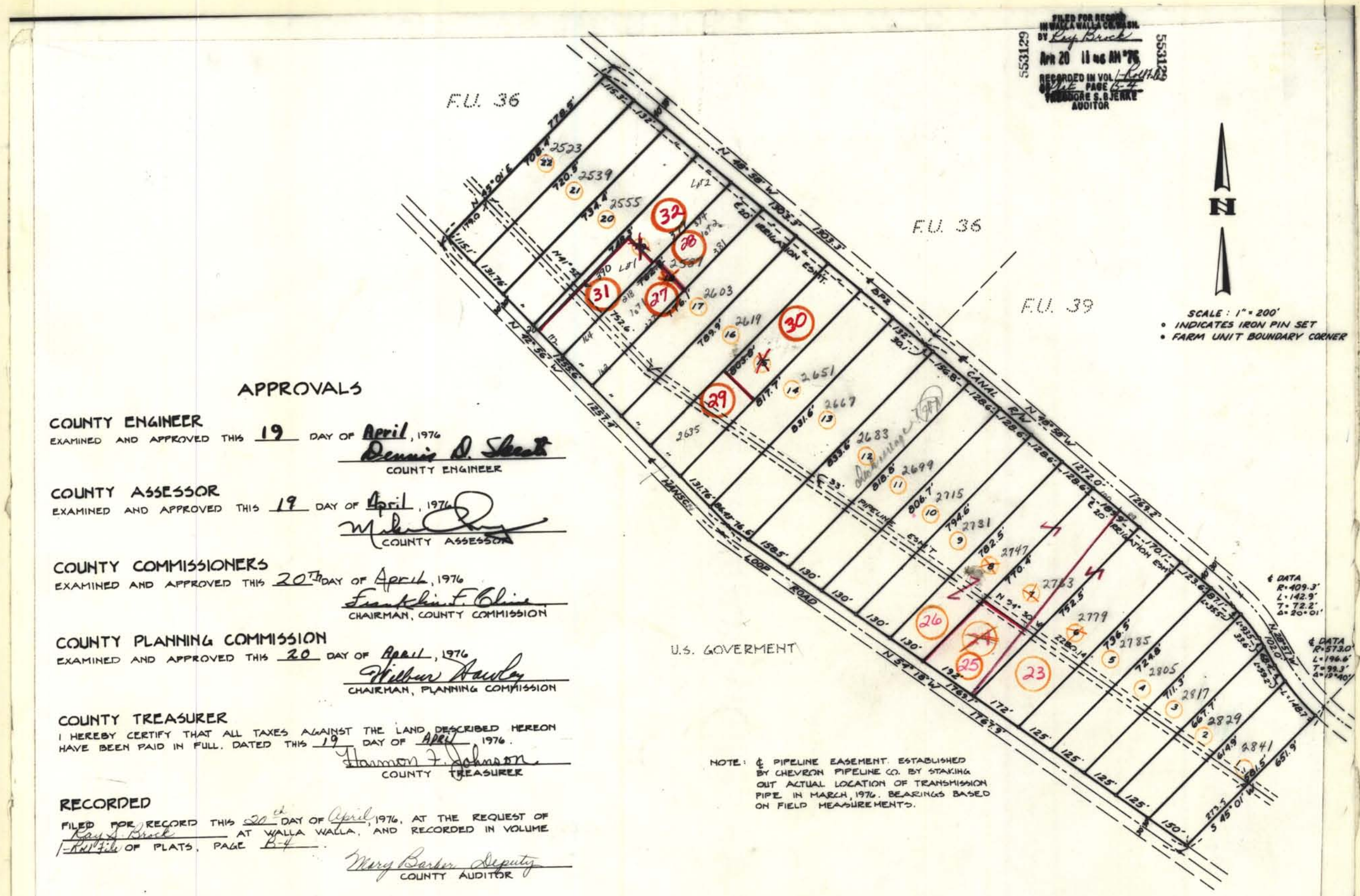


BROCK DEVELOPMENT NO. ONE

31 08 18



*STREET ADDRESSES



APPROVALS

COUNTY ENGINEER
 EXAMINED AND APPROVED THIS 19 DAY OF April, 1976
Dennis D. Shurt
 COUNTY ENGINEER

COUNTY ASSESSOR
 EXAMINED AND APPROVED THIS 19 DAY OF April, 1976
M. J. [Signature]
 COUNTY ASSESSOR

COUNTY COMMISSIONERS
 EXAMINED AND APPROVED THIS 20th DAY OF April, 1976
Franklin F. Olive
 CHAIRMAN, COUNTY COMMISSION

COUNTY PLANNING COMMISSION
 EXAMINED AND APPROVED THIS 20 DAY OF April, 1976
William A. [Signature]
 CHAIRMAN, PLANNING COMMISSION

COUNTY TREASURER
 I HEREBY CERTIFY THAT ALL TAXES AGAINST THE LAND DESCRIBED HEREON
 HAVE BEEN PAID IN FULL, DATED THIS 19 DAY OF April, 1976.
Harmon J. [Signature]
 COUNTY TREASURER

RECORDED
 FILED FOR RECORD THIS 20th DAY OF April, 1976, AT THE REQUEST OF
Ray Brock AT WALLA WALLA, AND RECORDED IN VOLUME
1-1141 OF PLATS, PAGE B-4.
Mary Barker, Deputy
 COUNTY AUDITOR

ENGINEER'S CERTIFICATE

I, ALLEN D. STANLEY, HEREBY CERTIFY THAT THIS PLAT KNOWN AS "BROCK DEVELOPMENT NO. ONE" IS BASED ON AN ACTUAL SURVEY AND THAT THE DISTANCES AND COURSES ARE SHOWN CORRECTLY HEREON AND THAT THE MONUMENTS AND LOT CORNERS HAVE BEEN SET AS INDICATED.

Allen D. Stanley
 ALLEN D. STANLEY
 PROFESSIONAL ENGINEER - LAND SURVEYOR



FILED FOR RECORD
 IN WALLA WALLA COUNTY
 BY Ray Brock
 APR 20 11 46 AM '76
 RECORDED IN VOL. 1-1141
 PAGE B-4
 WENDY S. S. JENKINS
 AUDITOR



SCALE: 1" = 200'
 • INDICATES IRON PIN SET
 • FARM UNIT BOUNDARY CORNER

U.S. GOVERNMENT

NOTE: PIPELINE EASEMENT ESTABLISHED BY CHEVRON PIPELINE CO. BY STAKING OUT ACTUAL LOCATION OF TRANSMISSION PIPE IN MARCH, 1976. BEARINGS BASED ON FIELD MEASUREMENTS.