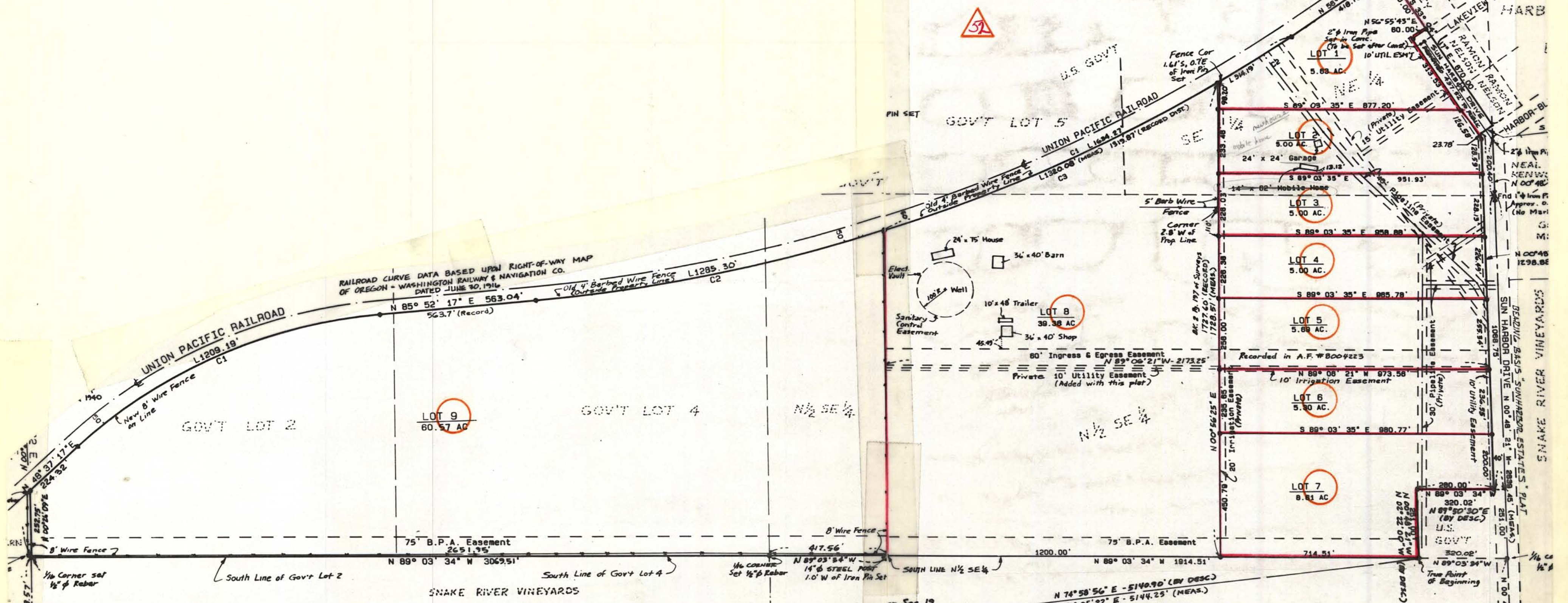


BISON ESTATES

SECTION 19, T. 9 N., R. 32 E., W.M. - WALLA

BASIS OF BEARING: EAST LINE SECTION 19(9-32)-RECORD PLAT OF SUN HARBOR ESTATES
 NOTE: ALL BEARINGS AND DISTANCES SHOWN AS MEASURED
 UNLESS OTHERWISE NOTED.



CURVE TABLE

LABEL	RADIUS	CENTRAL ANGLE	ARC LENGTH	CHORD LENGTH	CHORD BEARING	TAN. LENGTH
C1	1859.89	37° 15' 01"	1209.19	1188.01	N 67° 14' 47" E	628.83
C2	5779.66	12° 44' 30"	1285.30	1282.66	N 78° 30' 02" E	645.31

CLOSURE

BEARING	DISTANCE	COSINE	SINE	NORTH	SOUTH	EAST	WEST
S 33° 04' 17" E	670.00	0.837991813	0.54663971	561.45	365.61		
S 62° 02' 02" E	47.81	0.716467871	0.693700115	34.27	33.15		

or Sec. 19

CURVE TABLE

LABEL	RADIUS	CENTRAL ANGLE	ARC LENGTH	CHORD LENGTH	CHORD BEARING	TAN. LENGTH
C1	5779.66	16° 12' 04"	1630.27	1620.83	N 66° 01' 45" E	822.62
C2	5779.66	08° 06' 53"	314.19	314.16	N 58° 23' 09" E	157.14
C3	5779.66	13° 05' 11"	1380.08	1317.81	S 68° 35' 11" W	682.92

Section Line between Section 24 & 19 was re-established using Bureau of Reclamation 1940 Retraiment. Previous property corner was a 8 1/2" iron pin destroyed in fence construction and location not verifiable.

Faint 2 1/2" Bureau of Recl. Brass Cap Mon. Labeled 24/19 29/30



Snake River Vineyards