

Return Address

**Walla Walla County Commissioners**

Document Titles (i.e.: type of document)

**Ordinance No. 360**

Auditor File Number(s) of document being assigned or released:

Grantor

1. **Walla Walla County Commissioners**

2.

3.

Additional names on page \_\_\_\_ of document.

Grantee

1. **The Public**

2.

3.

Additional names on page \_\_\_\_ of document.

Legal description (i.e.: lot and block or section township and range)

Additional legal is on page \_\_\_\_ of document.

Assessors Parcel Number

Additional parcel number is on page \_\_\_\_ of document.

The Auditor/Recorder will rely on the information provided on this form. The staff will not read the document to verify the accuracy or completeness of the indexing information provided herein. Please type or print the information. This page becomes part of document.



Walla Walla County, WA

ORD

**2007-14402**

Page: 1 of 5

12/18/2007 02:11P

**BOARD OF COUNTY COMMISSIONERS  
WALLA WALLA COUNTY, WASHINGTON**

**ORDINANCE NO. 360**

**APPROVING A REQUEST BY WALLA WALLA COUNTY FOR AMENDMENTS TO THE COUNTY-WIDE ZONING MAP TO IMPLEMENT ZONING CONSISTENT WITH THE COMPREHENSIVE PLAN.**

**WHEREAS**, the County is updating the Walla Walla County Comprehensive Plan in accordance with RCW 36.70A.130; and

**WHEREAS**, Walla Walla County Code 14.10.090A(3) allows for the concurrent review and update of development regulations with updates to the Comprehensive Plan; and

**WHEREAS**, on September 28, 2007, an Integrated Draft Comprehensive Plan/ Draft Environmental Impact Statement document, which analyzed the changes to be made by the proposed map amendments, was issued and circulated in accordance with state law; and

**WHEREAS**, the Department of Community Development held public outreach meetings in Walla Walla and Burbank on October 16, 2007 and October 23, 2007, respectively; and

**WHEREAS**, the Board of County Commissioners and Planning Commission held joint workshops on October 17 and 24, 2007; and

**WHEREAS**, the Planning Commission held a public hearing on November 7, 2007 for the purposes of receiving testimony and to consider the request; and

**WHEREAS**, the Planning Commission recommended that the amendments to the County's zoning map be approved concurrently with the 2007 Comprehensive Plan Land Use Plan; and

**WHEREAS**, the Board of County Commissioners held a public hearing on December 3, 2007, for the purpose of receiving testimony and to consider the request; and

**WHEREAS**, on December 17, 2007, a Final Environmental Statement was approved by the SEPA Responsible Official; and

**WHEREAS**, the Final EIS analyzed and addressed the impacts and alternatives to the proposed amendment; and

**WHEREAS**, the Board has adopted, by separate Ordinances on this date, a revised Comprehensive Plan and revised zoning maps; and



**WHEREAS**, the Board finds that the proposed amendments:

1. Constitute good planning and development regulations.
2. Are consistent with the Walla Walla County Comprehensive Plan as concurrently amended.
3. As proposed will not have a significant adverse influence on public welfare and safety.
4. Meet the requirements set forth in WWCC 14.10.080.

**NOW THEREFORE**,

**BE IT ORDAINED**, by the Walla Walla County Board of County Commissioners that they do Ordain as follows:

**Section 1. Adoption of County-Wide Zoning Map**

The map Attached as Exhibit A represents the County's current County-Wide Zoning, as amended by separate Ordinances on this date

**Section 2. Effective Date and Savings.** This Ordinance is effective on December 21, 2007. Any previous ordinance amended by this Ordinance shall remain in force and effect until the effective date of this ordinance.

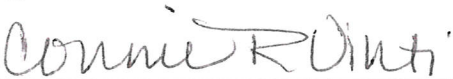
**Section 3. Severability.** If any section, subsection, paragraph, sentence, clause or phrase of this Ordinance is declared unconstitutional or invalid for any reason, such decision shall not affect the validity of the remaining parts of this ordinance.

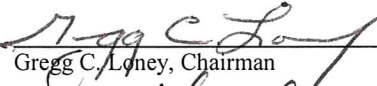


**Section 4. Publication.** This Ordinance will be published by an approved summary consisting of the title.

PASSED by the Walla Walla County Board of County Commissioners in regular session at Walla Walla, Washington, then signed by its membership and attested by its Clerk in authorization of such passage this 17th day of December, 2007.

Approved this 17<sup>th</sup> day of December, 2007

Attest:

  
\_\_\_\_\_  
Connie R. Vinti, Clerk of the Board

  
\_\_\_\_\_  
Gregg C. Loney, Chairman  
  
\_\_\_\_\_  
David G. Carey, Commissioner  
  
\_\_\_\_\_  
Gregory A. Tompkins, Commissioner

Constituting the Board of County Commissioners  
of Walla Walla County, Washington



Approved as to form



Jesse D. Nolte  
Deputy Prosecuting Attorney



Walla Walla County, WA

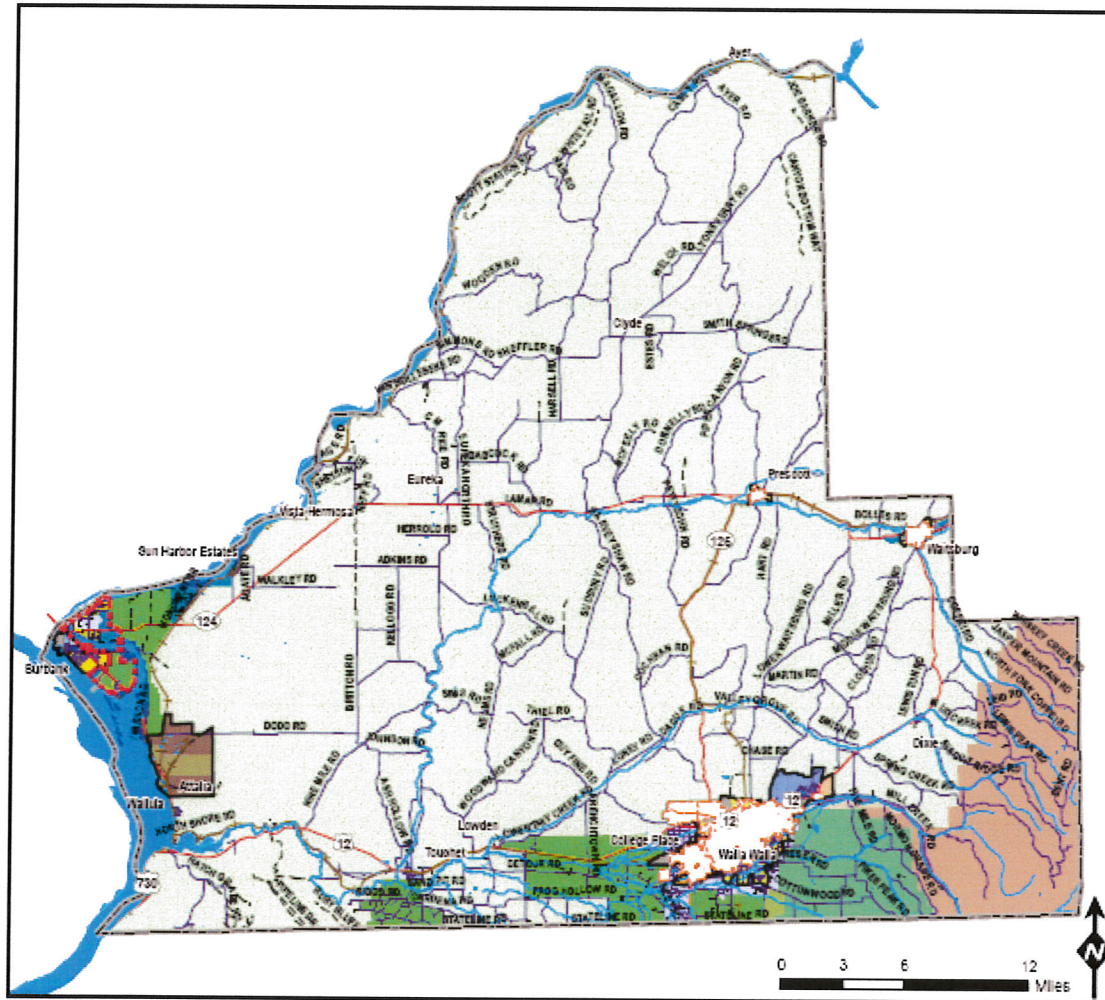
ORD

**2007-14402**

Page: 4 of 5

12/18/2007 02:11P

# County Zoning



<b>BASE MAP LAYERS</b>	<b>BOUNDARIES</b>	<b>ZONING DISTRICTS</b>
BASE MAP LAYERS	URBAN GROWTH AREA	AGRICULTURE RESIDENTIAL 10
HIGHWAYS	SUBURBAN RURAL ACTIVITY CENTER	AIRPORT DEVELOPMENT
PUBLIC ROADS	CITY LIMITS	SUBURBAN COMMERCIAL
PRIVATE ROADS	COUNTY BOUNDARY	SUBURBAN RESIDENTIAL
RIVERS/STREAMS		EXCLUSIVE AGRICULTURE 120
		GENERAL AGRICULTURE 20
		GENERAL COMMERCIAL
		HEAVY INDUSTRIAL
		INDUSTRIAL AGRICULTURE HEAVY
		INDUSTRIAL AGRICULTURE MIXED
		INDUSTRIAL BUSINESS PARK
		LIGHT INDUSTRIAL
		MULTIPLE-FAMILY RESIDENTIAL
		NEIGHBORHOOD COMMERCIAL
		PRIMARY AGRICULTURE 40
		PUBLIC RESERVE
		R-60 SINGLE-FAMILY RESIDENTIAL
		R-72 SINGLE-FAMILY RESIDENTIAL
		R-88 SUBURBAN RESIDENTIAL
		RURAL ACTIVITY CENTER
		RURAL AGRICULTURE 10
		RURAL AGRICULTURE 5
		RURAL DEVELOPMENT
		RURAL FARMWORKER COMMUNITY
		RURAL REMOTE 20
		RURAL REMOTE 40
		RURAL RESIDENTIAL 2
		RURAL RESIDENTIAL 5
		RURAL RESIDENTIAL MILL CREEK
		URBAN PLANNED COMMUNITY

Print Date: 12/11/2007

Walla Walla County Community Development Department - 310 W. Poplar, Walla Walla WA 99382 - (609) 524-2810

Ordinance No. 360



Walla Walla County, WA

ORD

2007-14402

Page: 5 of 5

12/18/2007 02:11P