

East lot detail for:

# Huntsman Estates

A project in Walla Walla County, WA

Drawn by: CAW  
Checked by: JEF

JF Eng. Job # 0161.00

Scale H: 1"=60'  
Scale V: N/A

Date: Sept 22, 2022

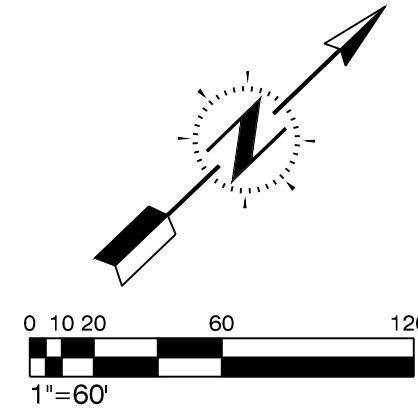
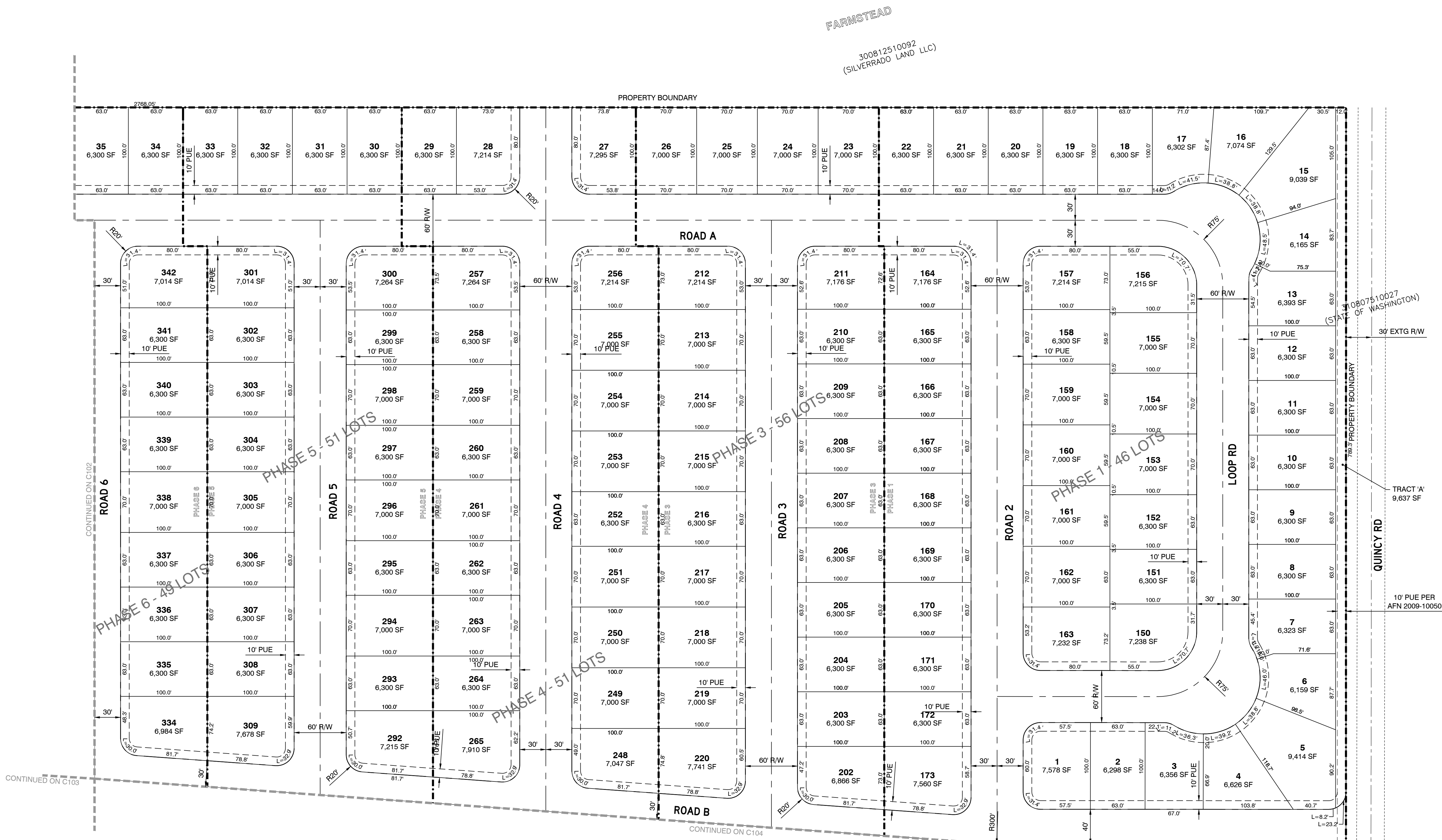
C104

ENGINEERING, PLLC  
CIVIL ENGINEERING  
PLANNING  
PROJECT MANAGEMENT

JOHN ERIC FETTER  
STATE OF WASHINGTON  
REGISTERED  
PROFESSIONAL ENGINEER

104 Clover Island Drive, Suite 201 Kennewick, WA 99336  
(509) 551-8174 PHN www.JFEngineering.pro





**811**  
Know what's below.  
Call before you dig.



**JIF** ENGINEERING, PLLC  
ENGINEERING  
PLANNING  
PROJECT MANAGEMENT  
104 Clover Island Drive, Suite 201 Kennewick, WA 99336  
(509) 551-8174 PHN www.JFEngineering.pro

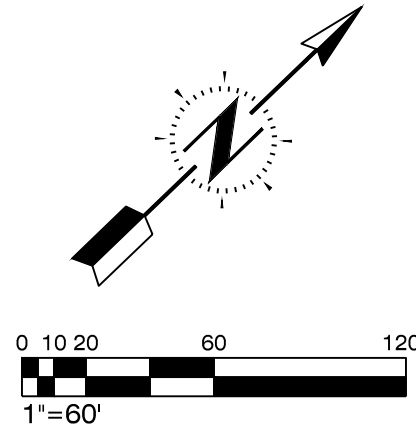
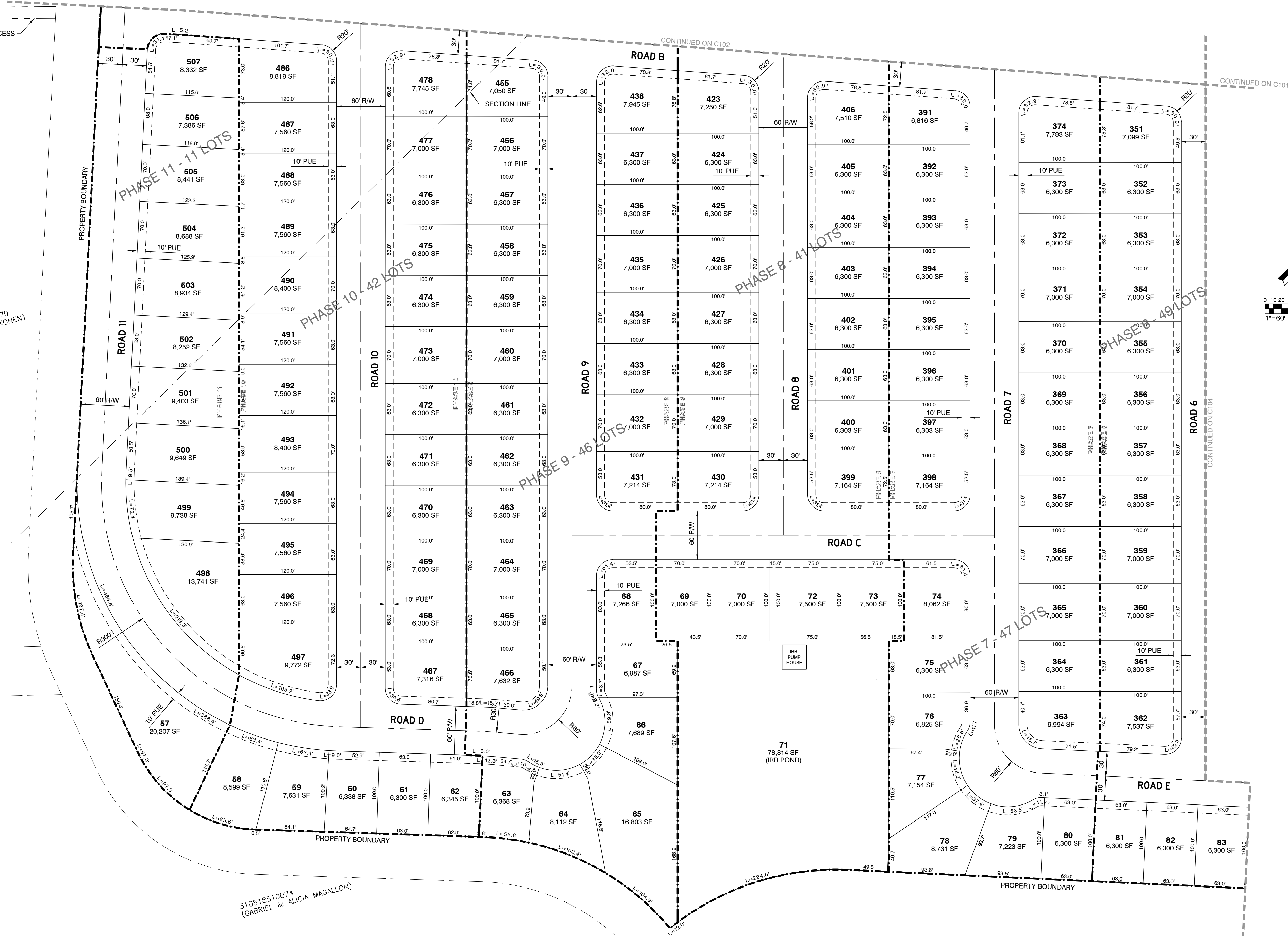
North lot detail for:  
**Hunstman Estates**  
A project in Walla Walla County, WA

Drawn by: CAW  
Checked by: JEF  
JF Eng. Job # 0161.00  
Scale H: 1"=60'  
Scale V: N/A  
Date: Sept 22, 2022  
C101

EXTG 30' FARM ACCESS

300812510079  
(BENJAMIN KONEN)

310818510074  
(GABRIEL & ALICIA MAGALLON)

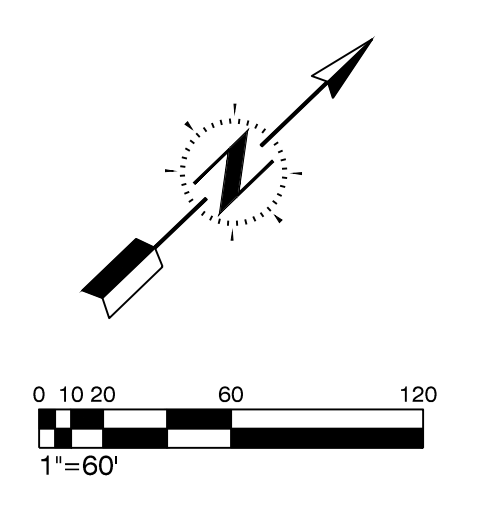
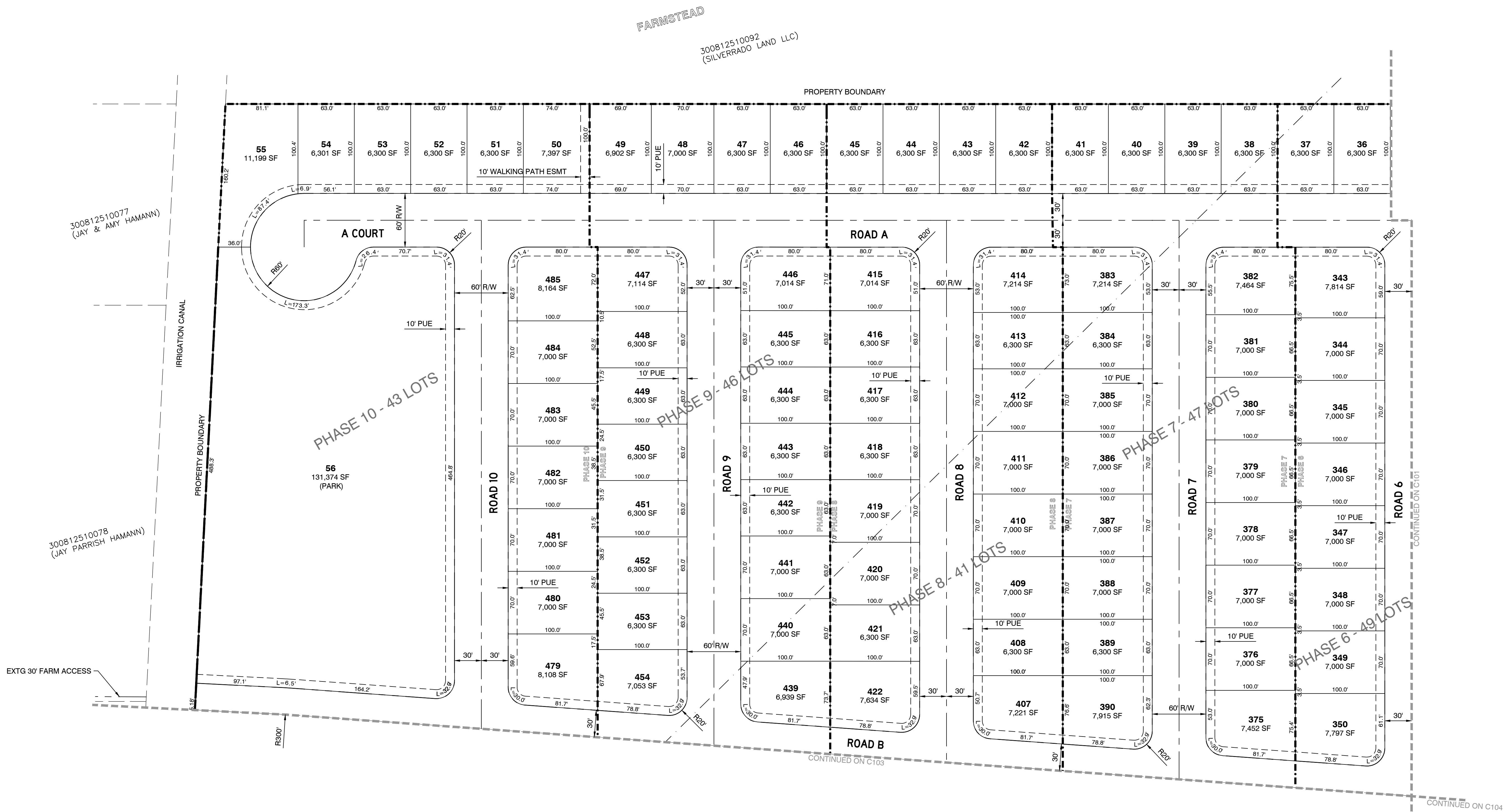


ENGINEERING, PLLC  
 CIVIL ENGINEERING  
 PLANNING  
 PROJECT MANAGEMENT  
 104 Clover Island Drive, Suite 201 Kennewick, WA 99336  
 (509) 551-8174 PHN www.JFEngineering.pro

South lot detail for:  
**Huntsman Estates**  
 A project in Walla Walla County, WA

Drawn by: CAW  
 Checked by: JEF  
 JF Eng. Job # 0161.00  
 Scale H: 1"=60'  
 Scale V: N/A  
 Date: Sept 22, 2022  
 C103





300812510077  
(JAY & AMY HAMANN)

300812510078  
(JAY PARRISH HAMANN)

FARMSTEAD  
300812510092  
(SILVERRADO LAND LLC)



ENGINEERING, PLLC  
ENGINEERING  
PLANNING  
PROJECT MANAGEMENT  
104 Clover Island Drive, Suite 201 Kennewick, WA 99336  
(509) 551-8174 PHN www.JFEngineering.pro

West lot detail for:  
**Hunstman Estates**  
A project in Walla Walla County, WA

Drawn by: CAW  
Checked by: JEF  
JF Eng. Job # 0161.00  
Scale H: 1"=60'  
Scale V: N/A  
Date: Sept 22, 2022  
C102