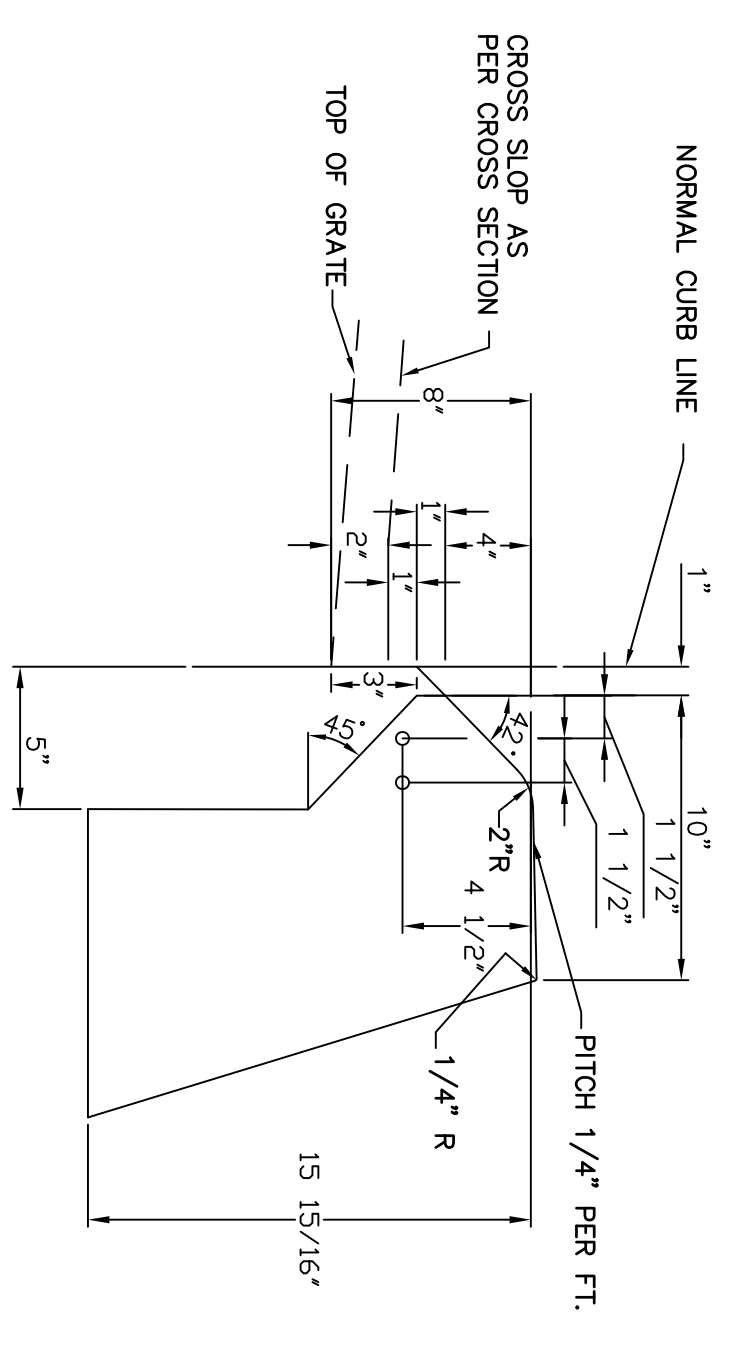


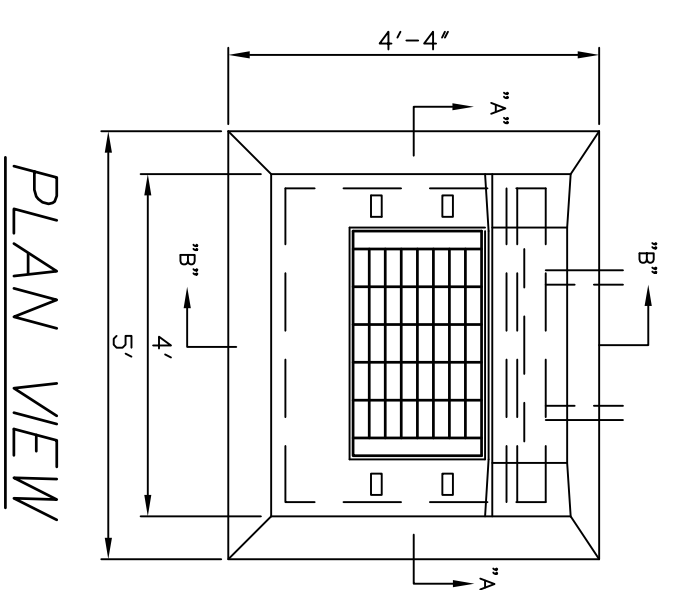
TO BE USED WHEN CURB INLET IS CONSTRUCTED IN A LINE OF PLAIN CONCRETE CURBING, DOWELED CONCRETE CURBING, OR STONE CURBING, 6" HIGH



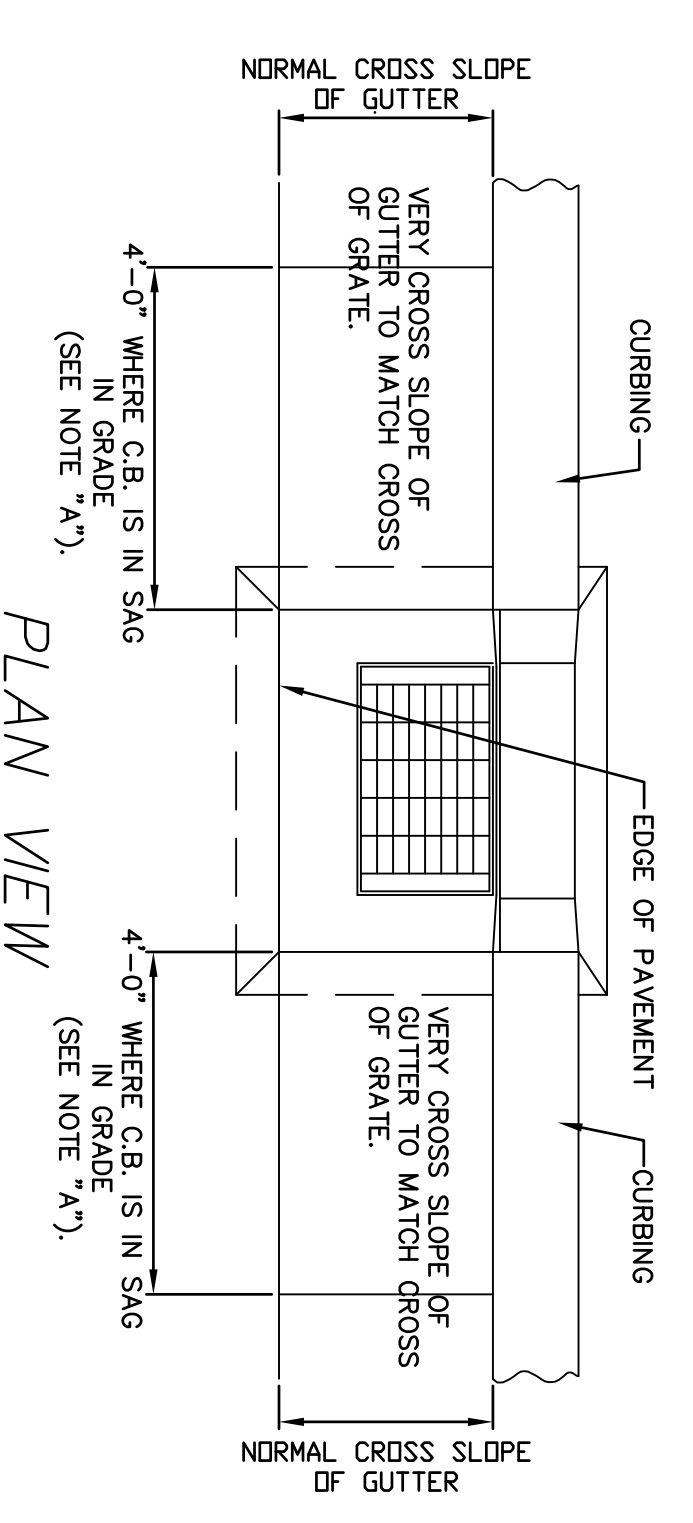
TO BE USED WHEN CURB INLET IS CONSTRUCTED IN A LINE OF BITUMINOUS CONCRETE UP CURB, 6" HIGH

DETAIL OF CURB INLET
PLAIN CURB TYPE

DETAIL OF CURB INLET
PARK CURB TYPE

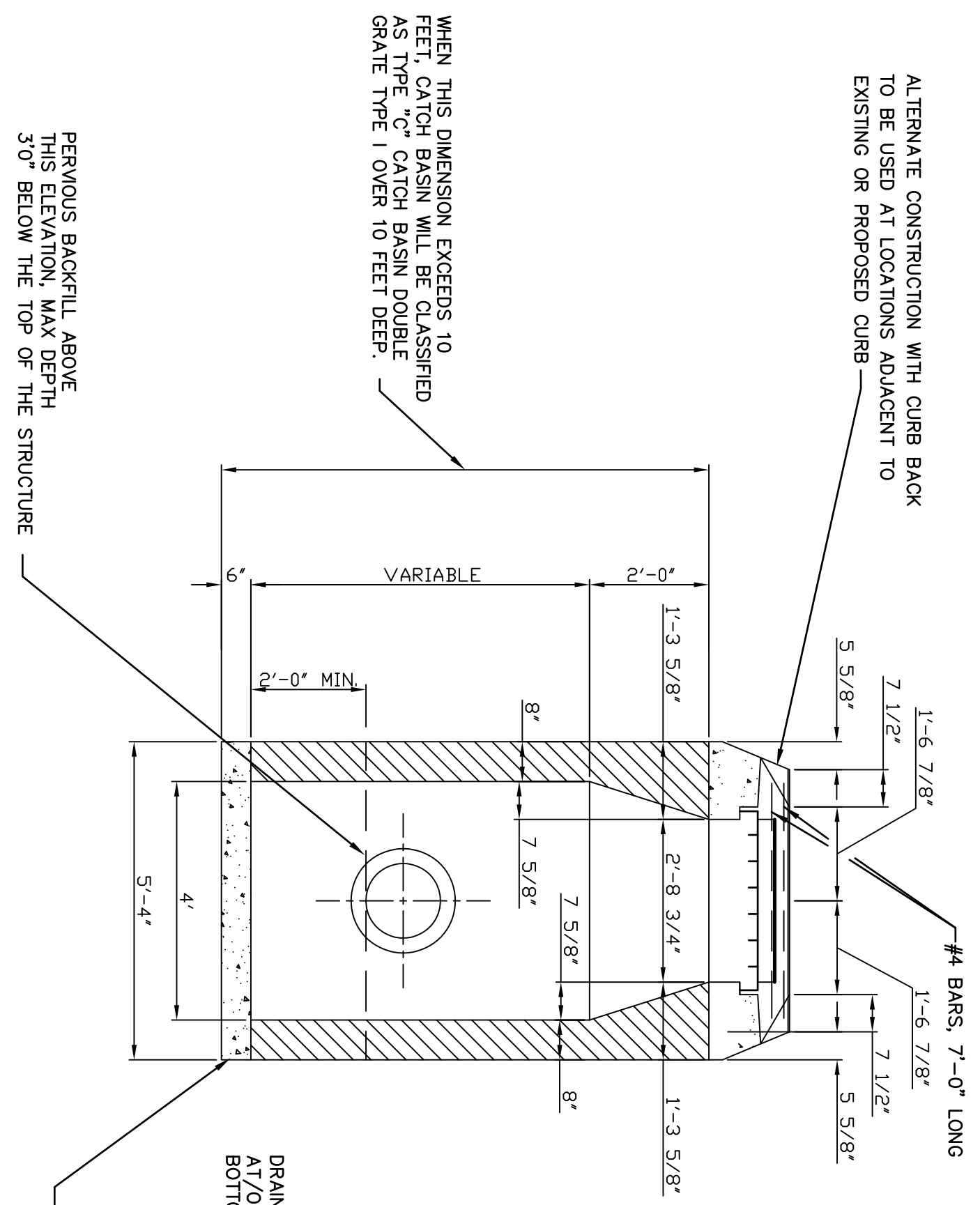


PLAN VIEW

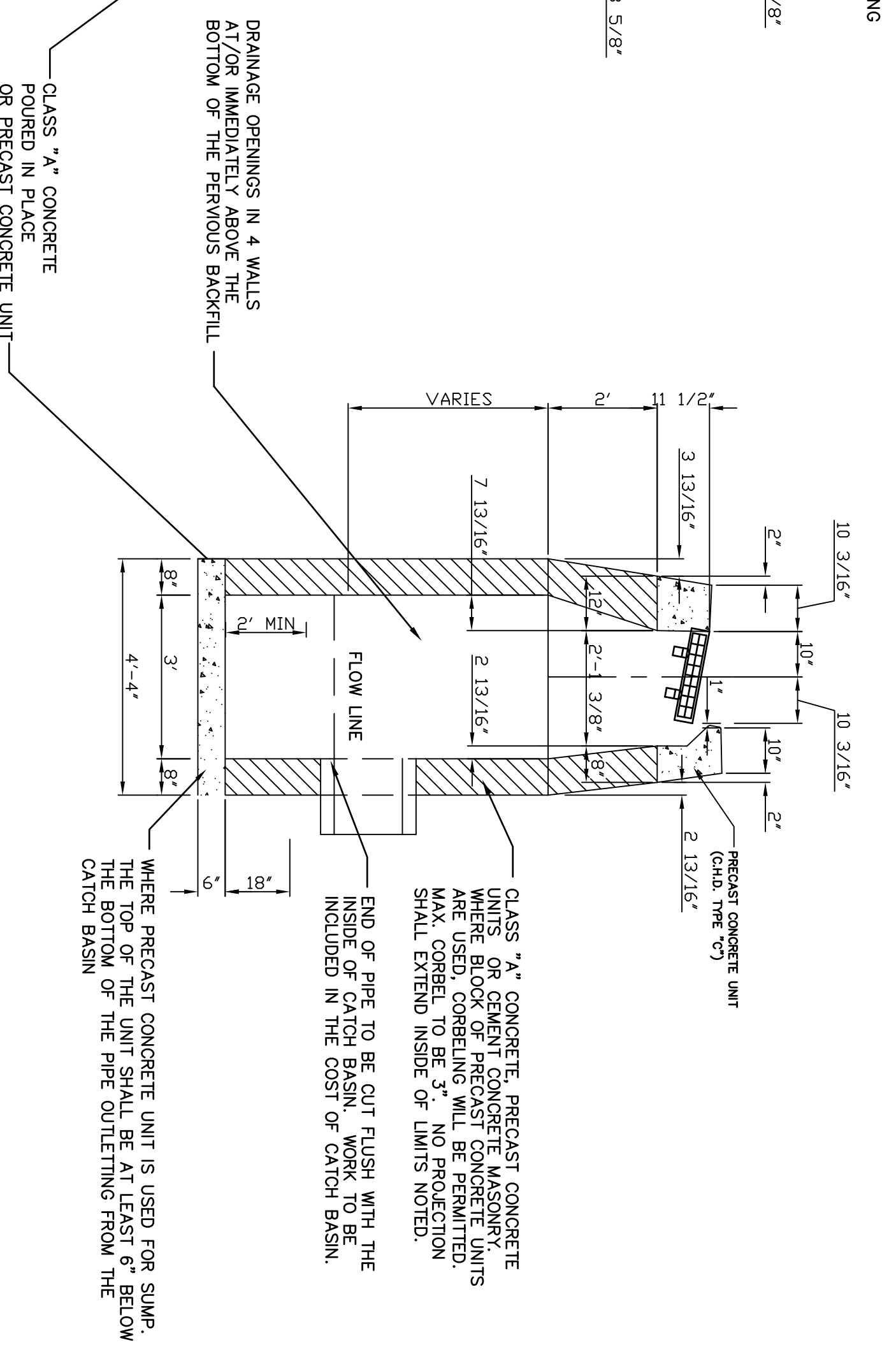


PLAN VIEW

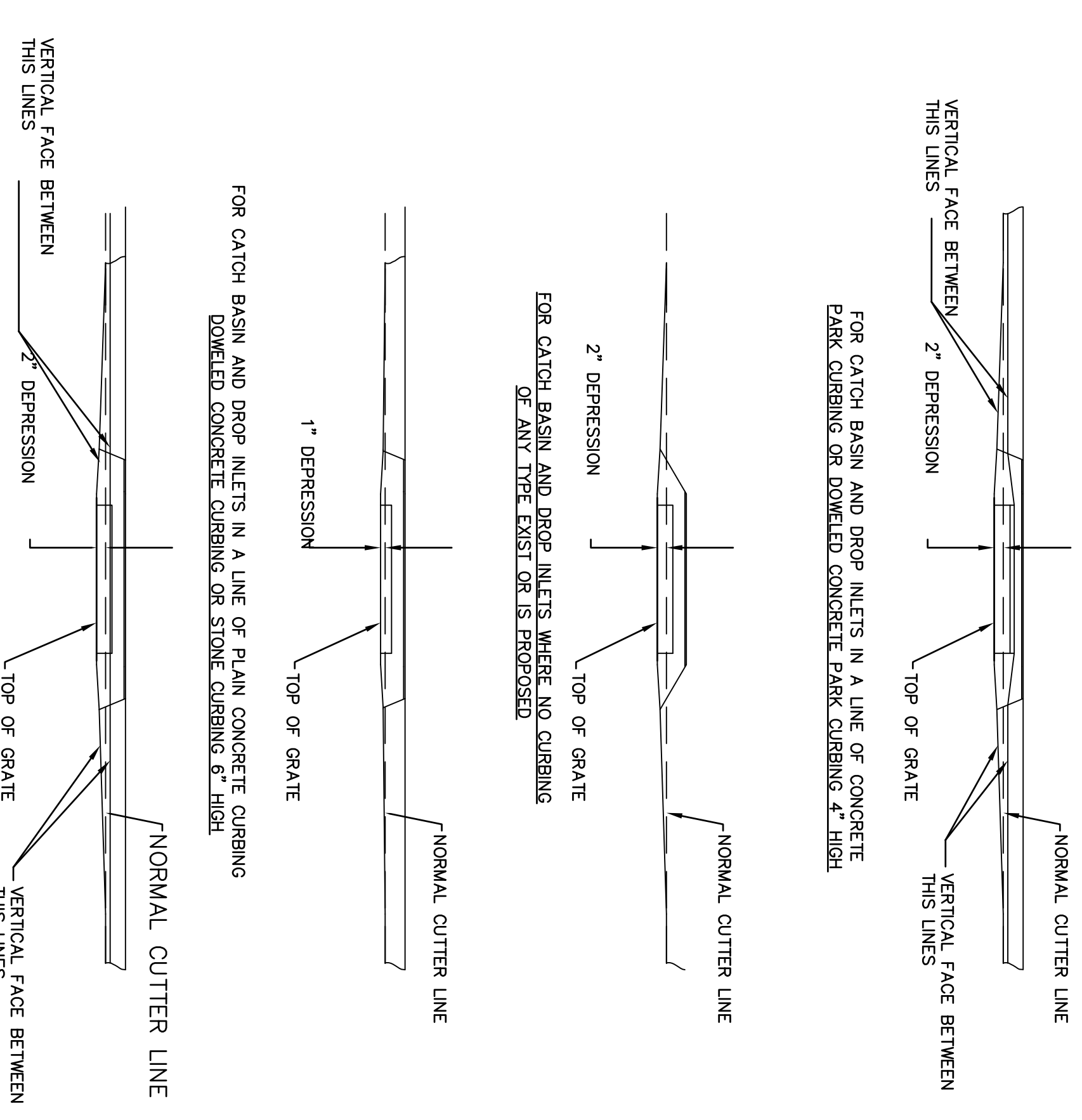
- NOTE:
1. WALLS OF ALL CATCH BASINS OVER 10" DEEP SHALL BE INCREASED TO 12" THICK
 2. DEEPER SUMPS MAY BE REQUIRED AT LOCATIONS SPECIFIED BY THE TOWN ENGINEER.
 3. WHEN CATCH BASIN IS SET IN CONCRETE PAVEMENT, THE SURFACE OF THE ADJOINING PAVEMENT SHALL BE CHANGED TO THE TOWN ENGINEER
 - A. 6'-0" ON UPGRADE SIDE OF CONTINUOUS GRADE, 1'-0" ON DOWNGRADE SIDE OF CONTINUOUS GRADE OR AS DIRECTED BY THE TOWN ENGINEER



SECTION A-A



SECTION B-B



STANDARD TYPE
"C" 2' SUMP

WHEN THIS DIMENSION EXCEEDS 10 FEET CATCH BASIN WILL BE CLASSIFIED AS TYPE "C" CATCH BASIN DOUBLE GRADE TYPE I OVER 10 FEET DEEP

ALTERNATE CONSTRUCTION WITH CURB BACK TO BE USED AT LOCATIONS ADJACENT TO EXISTING OR PROPOSED CURB

PERVIOUS BACKFILL ABOVE THIS ELEVATION, MAX DEPTH 3'-0" BELOW THE TOP OF THE STRUCTURE

DRAINAGE OPENINGS IN 4 WALLS AT/OR IMMEDIATELY ABOVE THE BOTTOM OF THE PERVIOUS BACKFILL

CLASS "A" CONCRETE POURED IN PLACE OR PRECAST CONCRETE UNIT

CLASS "A" CONCRETE, PRECAST CONCRETE UNIT OR CAST-IN-PLACE CONCRETE MASONRY. CURBING SHALL BE PERMITTED. MAX. CORREL TO BE 3". NO PROJECTION SHALL EXTEND INSIDE OF LIMITS NOTED.

WHERE PRECAST CONCRETE UNIT IS USED FOR SUMP, THE TOP OF THE UNIT SHALL BE AT LEAST 6" BELOW THE BOTTOM OF THE PIPE OUTLETING FROM THE CATCH BASIN

NO.	REVISIONS	BY	DATE	J.M.M.	DATE:	3-2-2008
		DES BR:	J.M.M.			
		DNM BR:	J.M.M.			
		CHK BR:	R.S.		SCALE:	N.A.
		APP BR:	R.C.		DATE:	
		APPROVED BY:			DATE:	

TOWN OF WATERTOWN
DEPARTMENT OF PUBLIC WORKS
DIVISION OF ENGINEERING

PROJECT TITLE:	TOWN OF WATERTOWN STANDARD DRAWINGS	DRAWING TITLE:	TYPE "C" CATCH BASIN
PROJECT NO.	↔	FILE NO.	↔
DRAWING NO.	15397M-3A	SHEET NO.	15397M-3A