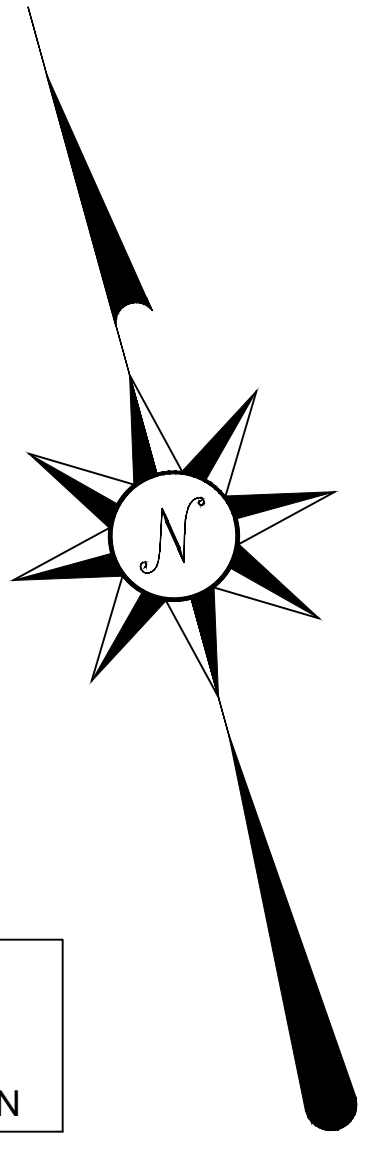
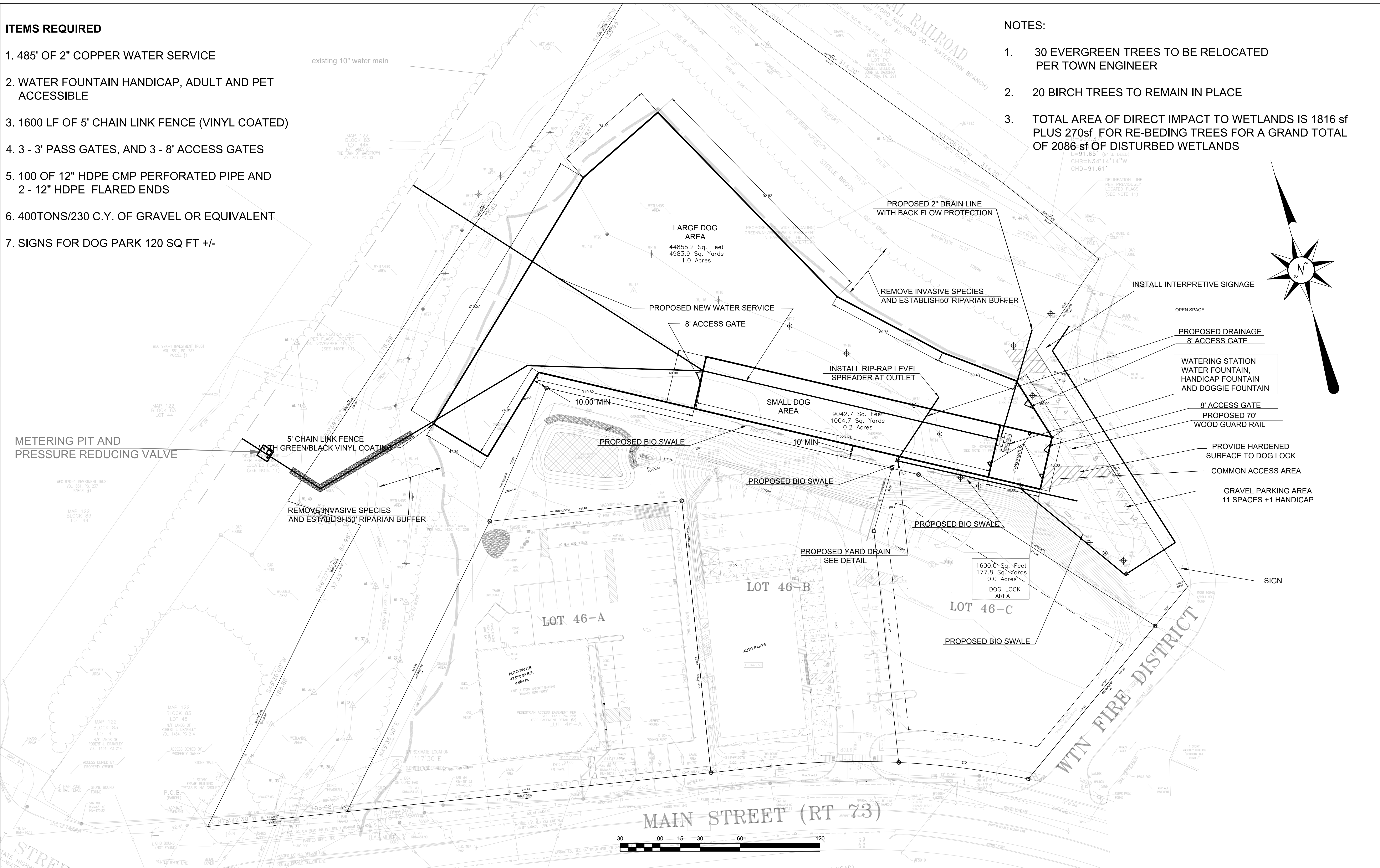


ITEMS REQUIRED

1. 485' OF 2" COPPER WATER SERVICE
2. WATER FOUNTAIN HANDICAP, ADULT AND PET ACCESSIBLE
3. 1600 LF OF 5' CHAIN LINK FENCE (VINYL COATED)
4. 3 - 3' PASS GATES, AND 3 - 8' ACCESS GATES
5. 100 OF 12" HDPE CMP PERFORATED PIPE AND 2 - 12" HDPE FLARED ENDS
6. 400TONS/230 C.Y. OF GRAVEL OR EQUIVALENT
7. SIGNS FOR DOG PARK 120 SQ FT +/-

NOTES:

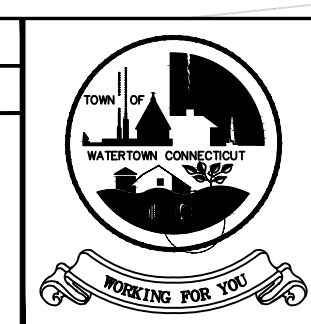
1. 30 EVERGREEN TREES TO BE RELOCATED PER TOWN ENGINEER
2. 20 BIRCH TREES TO REMAIN IN PLACE
3. TOTAL AREA OF DIRECT IMPACT TO WETLANDS IS 1816 sf PLUS 270sf FOR RE-BEDDING TREES FOR A GRAND TOTAL OF 2086 sf OF DISTURBED WETLANDS



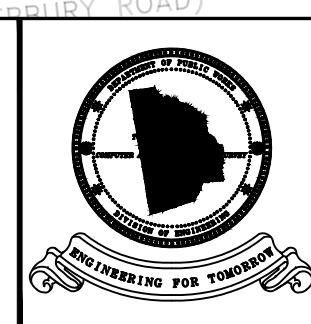
NO.	REVISIONS	BY	DATE

DES BY:	J.M.M.	DATE:	1-20-2015
DRN BY:	J.M.M.	DATE:	
CHK BY:	R.C.	SCALE:	1" = 30'
APPD BY:	R.C.		

SUBMITTED BY:		DATE:	
APPROVED BY:		DATE:	
ENGINEER:			



TOWN OF WATERTOWN
 DEPARTMENT OF PUBLIC WORKS
 DIVISION OF ENGINEERING



PROJECT TITLE:
PROPOSED DOG PARK
WATERTOWN CT

DRAWING TITLE:
CONCEPTUAL PLANS II FOR
WATERTOWN DOG PARK
OPTIONS 3

PROJECT NO.	WTN-153-001-2015
FILE NO.	
DRAWING NO.	1
SHEET NO.	1 OF 1