



# **Waxahachie Fire-Rescue**

**Annual Report**

**Fiscal Year 2013-14**

# **TABLE OF CONTENTS**

Introduction.....	2
Mission, Vision and Value Statements.....	3
2013-14 Highlights.....	4-13
Organizational Chart.....	14
Authorized Personnel.....	15
Budget Information.....	16
Fire Administration.....	17
Fire Station # 1.....	18-19
Fire Station # 2.....	20-21
Fire Station # 3.....	22-23
Operations Division Statistics.....	24-31
Prevention Division Statistics.....	32-35
Community Involvement.....	36-43



# **INTRODUCTION**

The American fire service is built upon tradition, respect, honor, and dedication to the service of others. Waxahachie Fire-Rescue has enjoyed a rich history of serving the citizens, visitors, and businesses of the City of Waxahachie since 1883. The reputation of this department is one of excellence and professionalism.

With the support of the citizens and businesses of Waxahachie, Mayor, City Council, our City Manager and his staff, as well as the other City departments and supporting governmental agencies, we continue to be an exemplary organization that prides itself on being proactive, efficient, and exceptionally effective in our delivery of services.

While we are blessed to be supplied with the very best equipment and training available, nothing can take the place of our most important asset- the men and women of this Department who dedicate their lives to serving others. And so, with this in mind, I would like to take this opportunity to thank our members for the exceptional service they provide on a daily basis as well as to their family members for sharing them with this Department and the City of Waxahachie.

In a team effort, we are committed to provide the best possible proactive approach to fire and life safety, prevention and education. We will pursue excellence in every aspect of our mission. Our goal is to continue to work together to make our city a safe and productive environment for all concerned. In doing so, every citizen can be ensured that our mission will be accomplished in a fashion which reflects this Department's dedication to outstanding customer and community service.

It is our honor and privilege to serve the 32,000 citizens of the City of Waxahachie with an ISO Class 2/10 fire department. While we strive for increased knowledge and capabilities, we must also ensure that we document our past activities and accomplishments. As such, we are proud to hereby present the 2013-14 Annual Report for Waxahachie Fire-Rescue.

*Ricky Boyd*, Fire Chief  
Waxahachie Fire-Rescue

## **MISSION STATEMENT**

To protect life and property from fire through strong prevention, public education, code enforcement and suppression programs and to establish the best rescue and pre-hospital care plan possible.

## **VISION STATEMENT**

We envision a city where citizens can live comfortably knowing their lives and property are protected by a department staffed with proficient, caring, dedicated people and where all citizens are educated about fire prevention and other public safety concerns.

## **VALUE STATEMENTS**

**Positive Attitudes-** We value a positive attitude toward the City and this department.

**Professionalism-** We value pride in our department and pride in the quality of work we are privileged to perform. Our conduct, both on and off duty, is a reflection of our professional commitment.

**Service Orientation-** We value a commitment to service. We recognize a service responsibility to other City departments and to every element of our business and neighborhood community. Our performance must ultimately be judged by the satisfaction of those we serve.

**Teamwork-** We value teamwork. No one is as effective alone as they are with the cooperative help of others. We encourage all members to work together as equal partners.

**Innovation-** We value and encourage the challenge of new ideas and technology. Therefore, we encourage resourceful self-motivation.

**Performance-** We are committed to personal and professional development. We encourage training, education, and skill development on an on-going basis. We are committed to safety and to policies that encourage the mental and physical health of our most valuable asset, our members.

**Equal Opportunity-** Waxahachie Fire-Rescue is an equal opportunity employer and strongly supports and promotes equal opportunity for every individual.

# **2013-14 HIGHLIGHTS**

- Retirements:
  - On January 21, 2014, Engineer Randy Johnston retired with 25 years of service
  - On March 21, 2014, Firefighter Terry Skipper retired with 34 years of service
  - On July 4, 2014, Administrative Secretary Lynn Bogy retired with 24 years of service
  - On September 4, 2014, Battalion Chief Jeff Alexander retired with 30 years of service
- Added 3 new Firefighter positions to the department
- New Hires:
  - Ed Konick and Travis Wade joined the WFR on October 28, 2013
  - Phillip Lucky and Jacob Richardson joined the WFR on January 21, 2014
  - Cameron Potter joined the WFR on March 24, 2014
  - Jacob Emerson joined the WFR on June 9, 2014
- On January 21, 2014, Joey Dawson was promoted to the rank of Pump Engineer
- 2013 Firefighter of the Year: Jason Eubanks
- Responded to 4,480 calls for emergency service
- Apparatus:
  - Placed a new 2014 Chevy Tahoe in service as 803
  - Placed a new Ford F-350 in service as Battalion 1
  - Pierce Apparatus began building new Truck 3 in May 2014
  - Began the process of refurbishing the 1962 Mack Fire Engine in June 2014
  - Began the process of installing medication refrigerators in the fire apparatus
- Fire and Rescue Training:
  - Accomplished 4,786.5 Hours of Fire and Rescue Training
  - Certifications Obtained:
    - Intermediate Firefighter – 5
    - Advanced Firefighter – 3
    - Driver Operator – 17
    - Fire Instructor I – 10
    - Fire Instructor III – 2
    - Fire Officer I – 1
    - Fire Officer II – 14
    - NIMS 300/400 – 1
- EMS Training
  - Accomplished 3,205 Hours of EMS Training
  - Navarro College began delivering EMS CE in January 2014
  - In August 2014, 1 Firefighter became a paramedic and another Firefighter began paramedic school at Navarro College



## Ovilla Mutual Aid Fire January 1, 2014



## 119 Bateman Fire January 21, 2014





## Randy Johnston Retires January 21, 2014



## Terry Skipper Retires March 21, 2014

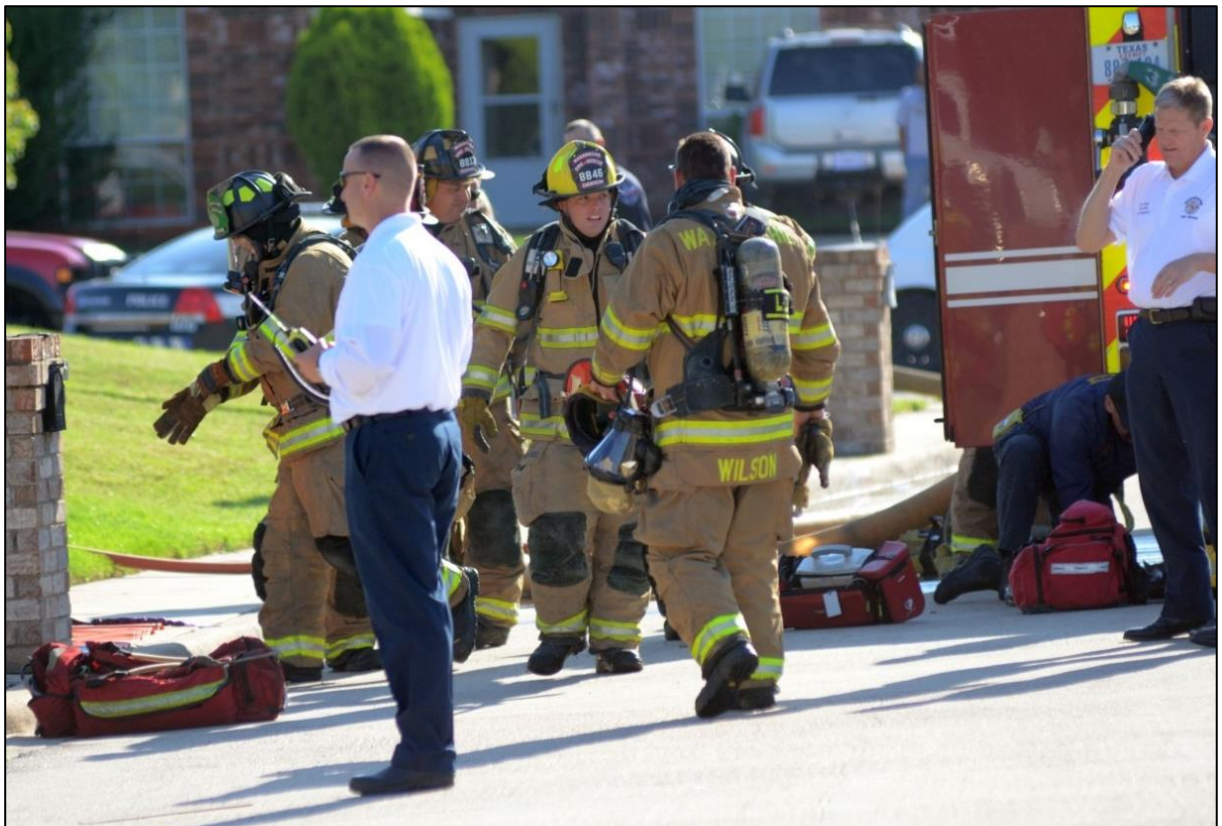




## New BC1 Truck Placed in Service May 2, 2014



## 709 Stanford Fire May 14, 2014





## Multi-Vehicle Accident June 4, 2014



## 1962 Mack Restoration Project Begins June 2014





## Lynn Bogy Retires July 4, 2014



## Plane Crash July 4, 2014





## FF Young Paramedic School Graduation July 18, 2014



## Oak Cliff Metals Recycling Fire August 12, 2014





## Roof Rescue 701 N. Gibson August 20, 2014



## Jeff Alexander Retires September 4, 2014





## Bent Tree Apartments Fire September 8, 2014



## Final Inspection of New Truck 3 September 16-18, 2014





## 214 W. University Fire September 26, 2014



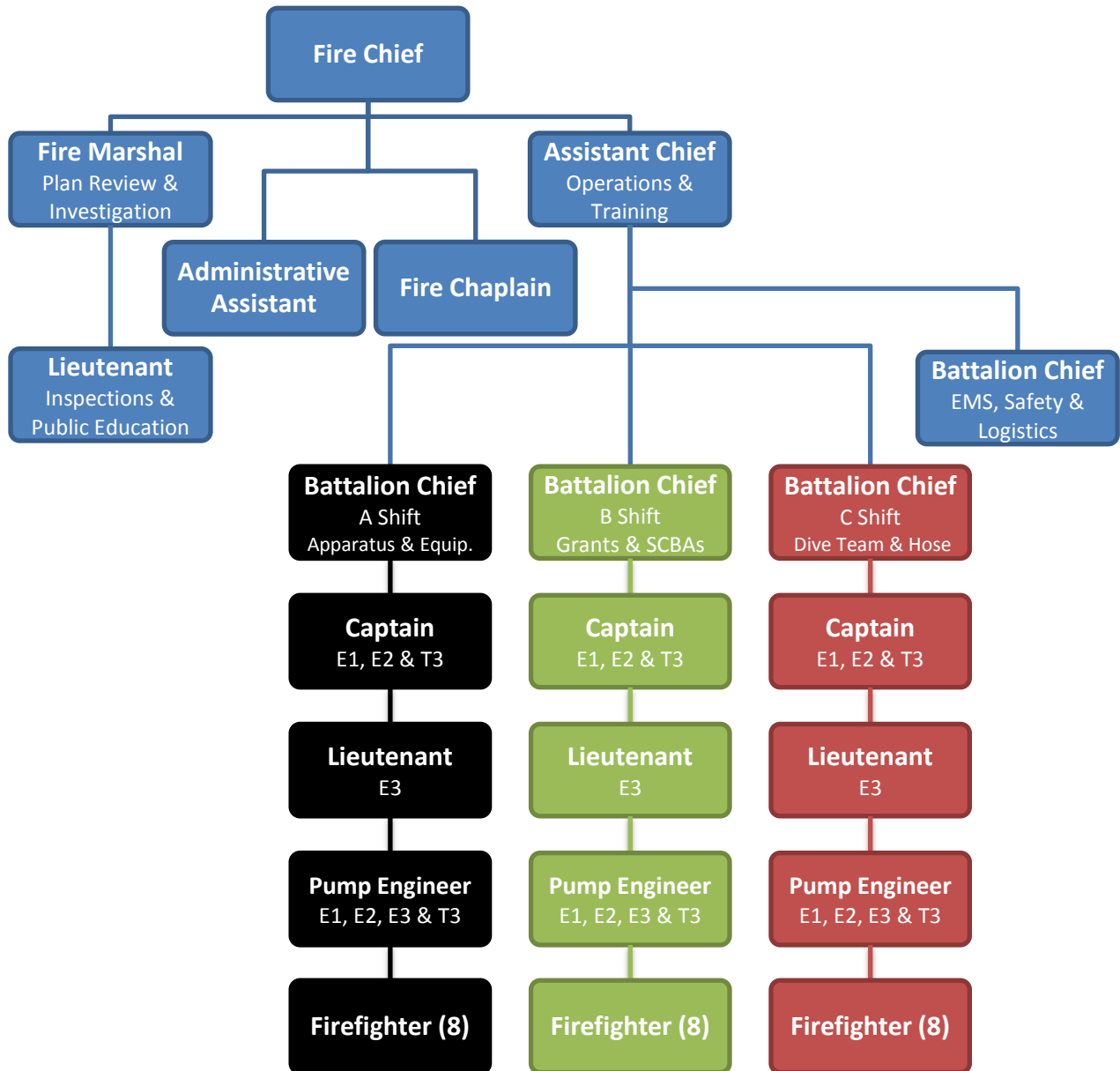
## Ovilla Road Grass Fire September 29, 2014





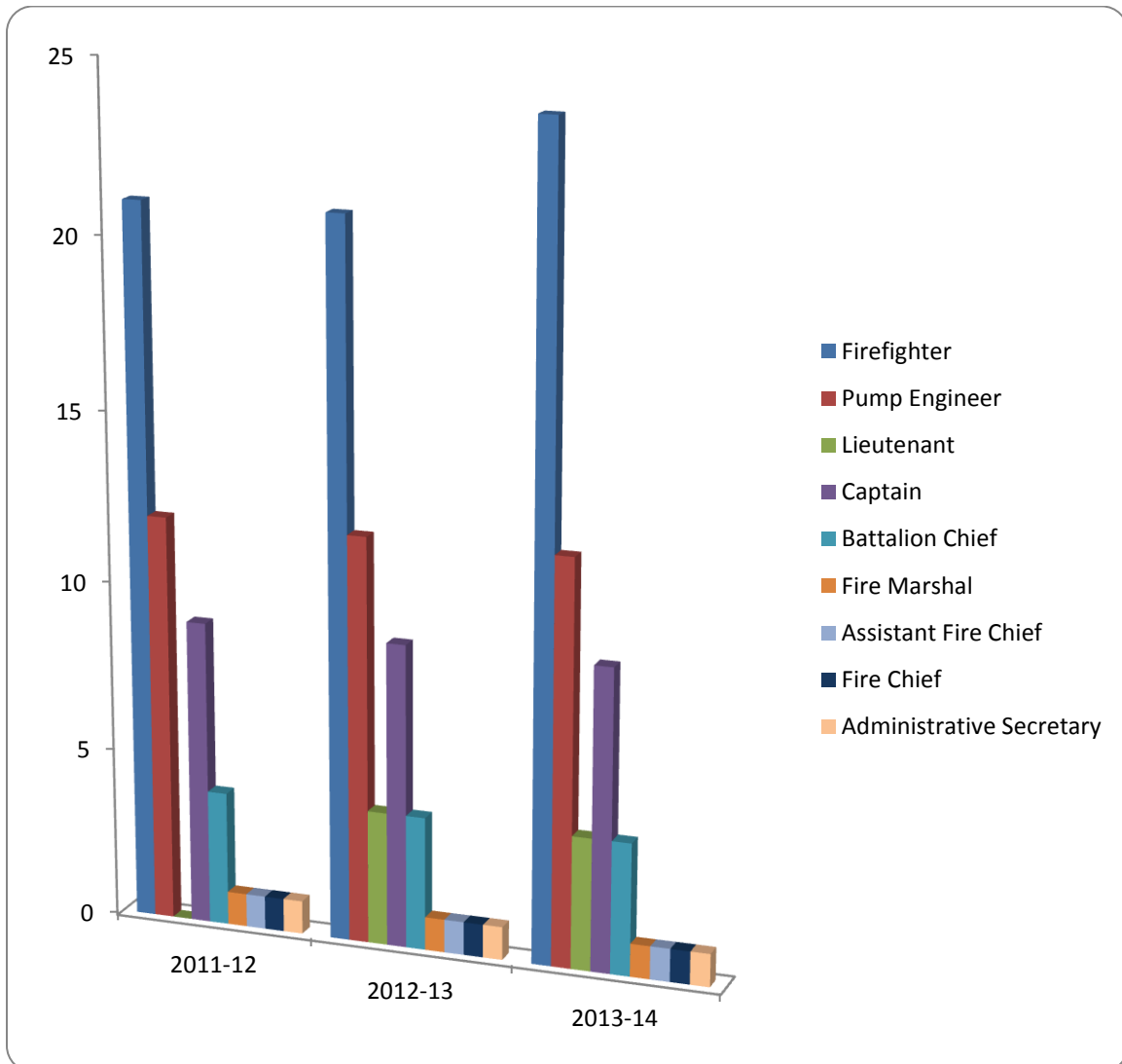
# WAXAHACHIE FIRE-RESCUE

## ORGANIZATIONAL CHART

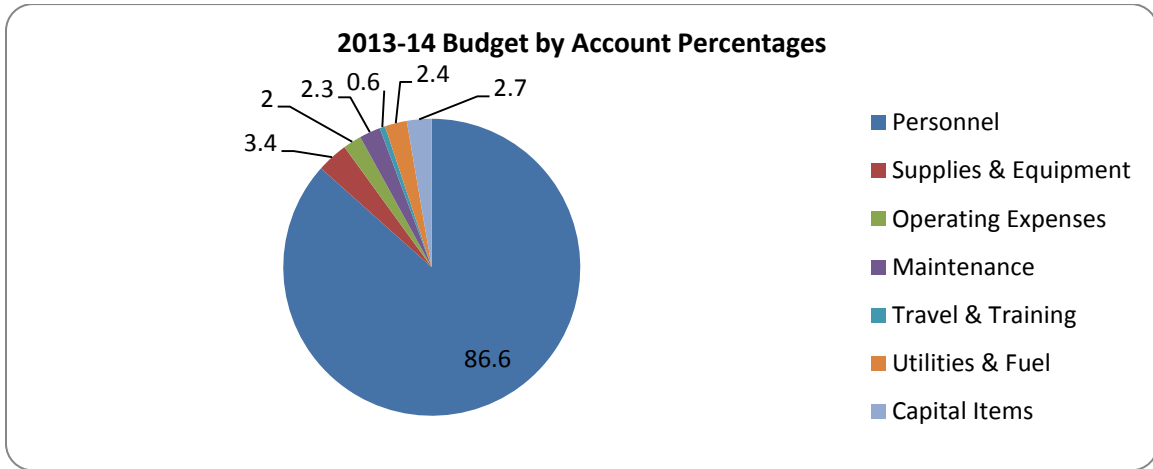


## **AUTHORIZED PERSONNEL**

Position	2011-12	2012-13	2013-14
Fire Chief	1	1	1
Assistant Fire Chief	1	1	1
Fire Marshal	1	1	1
Battalion Chief	4	4	4
Captain	9	9	9
Lieutenant	0	4	4
Pump Engineer	12	12	12
Firefighter	21	21	24
Administrative Secretary	1	1	1
<b>Total</b>	<b>50</b>	<b>54</b>	<b>57</b>

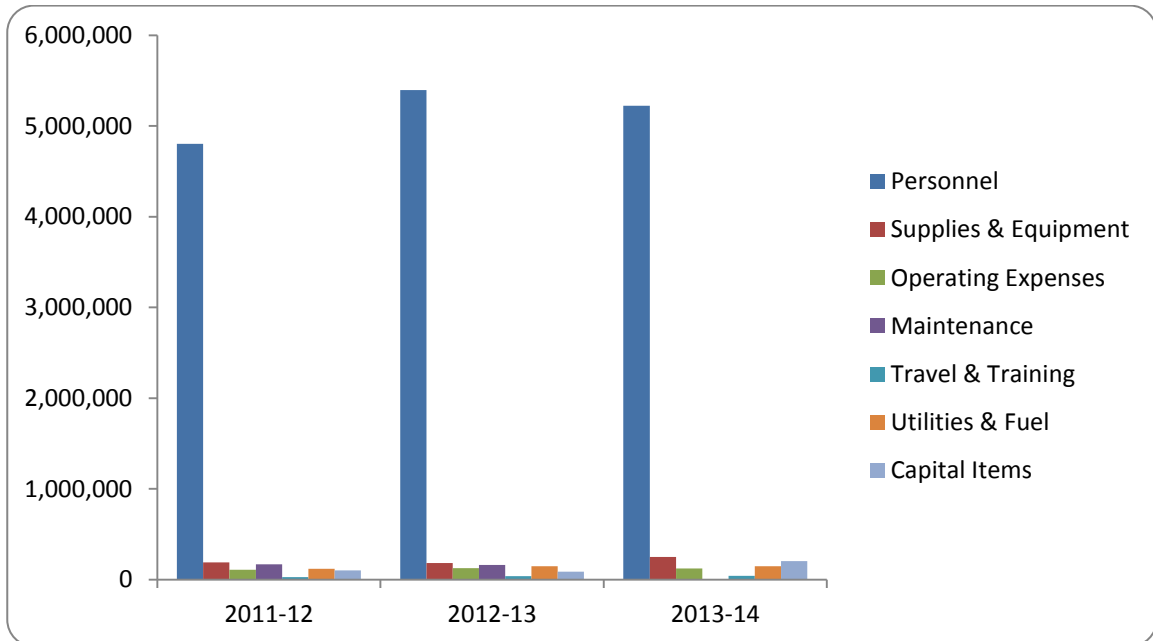


## **BUDGET INFORMATION**



### **3 Year Comparison of the WFR Budget by Account Type**

Budget Category	2011-12		2012-13		2013-14	
	Dollars	%	Dollars	%	Dollars	%
<b>Personnel</b>	4,801,640	87.1	5,394,510	87.8	5,274,829	86.6
<b>Supplies &amp; Equipment</b>	188,000	3.4	184,000	3.0	206,445	3.4
<b>Operating Expenses</b>	110,100	2.0	126,440	2.1	121,526	2.0
<b>Maintenance</b>	167,000	3.0	163,000	2.7	140,759	2.3
<b>Travel &amp; Training</b>	26,8000	0.5	37,000	0.6	37,806	0.6
<b>Utilities &amp; Fuel</b>	119,200	2.2	148,800	2.4	148,241	2.4
<b>Capital Items</b>	100,000	1.8	88,000	1.4	163,800	2.7
<b>Total</b>	5,512,740		6,141,750		6,093,406	





# **FIRE ADMINISTRATION**



## **Address**

407 Water Street

## **Year Opened**

1985

## **Apparatus Assigned**

800: 2010 Ford Explorer

801: 2010 Ford Explorer

802: 2012 Chevy Tahoe

803: 2014 Chevy Tahoe

804: 2008 Ford Explorer

805: 2003 Ford Explorer

## **Personnel Assigned**

Ricky Boyd, Fire Chief

Dennis Crecelius, Fire Marshal

Randall Potter, Assistant Fire Chief

Gary Myers, Battalion Chief

Candon Birdwell, Lieutenant

Cindy Rayford, Administrative Assistant

# **FIRE STATION # 1**



## **Address**

408 W. Main Street

## **Year Opened**

1963

## **Apparatus**

Engine 1: 2007 Pierce Arrow XT

XE-1: 1994 Pierce Saber

Booster 1: 2012 F-550

Off-Road 1: 2005 Cub Cadet

## **Minimum Staffing**

3



### Personnel Assigned

Position	A-Shift	B-Shift	C-Shift
<b>Captain</b>	Irvin	Maeker	Griffin
<b>Engineer</b>	Vest	Dorsey	Muetzenberg
<b>Firefighter</b>	Nava	Koonsman	Donelson
<b>Firefighter</b>	Douglas	Wade	Duwe



## **FIRE STATION # 2**



### **Address**

1601 Cleaver Street

### **Year Opened**

2012

### **Apparatus**

Engine 2: 2011 Pierce Arrow XT

Battalion 1: 2014 Ford F-350

XE-2: 2000 Pierce Dash

Squad 2: 2004 Ford F-250

Boat 2: 1995 Rescue 1 Connector Boat

Dive Team/Rescue Trailer

Clown Program Trailer

### **Minimum Staffing**

4





### Personnel Assigned

Position	A-Shift	B-Shift	C-Shift
<b>Battalion Chief</b>	Muirhead	Rodgers	Alexander
<b>Captain</b>	Marrs	Alexander	Brown
<b>Engineer</b>	Townley	Sodek	Martin
<b>Firefighter</b>	Seaberry	Morrill	Rodgers
<b>Firefighter</b>	Altom	Young	Jordan

## **FIRE STATION # 3**



### **Address**

200 YMCA Drive

### **Year Opened**

1986

### **Apparatus**

Engine 3: 2005 Pierce Arrow XT

Truck 3: 1997 105' Quint

Booster 3: 2007 F-450

### **Minimum Staffing**

6



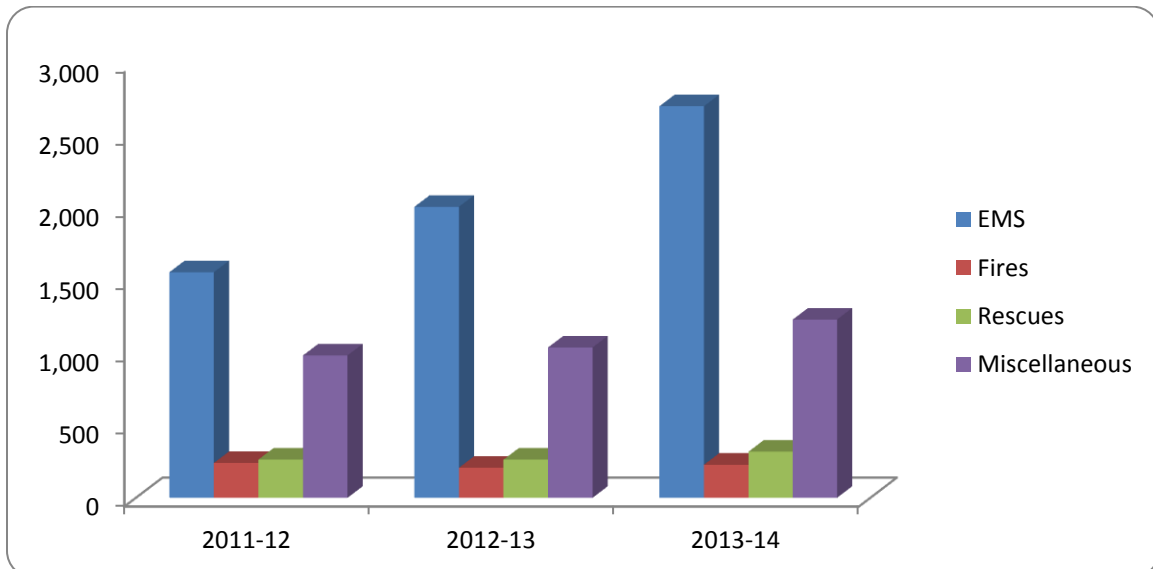
### Personnel Assigned

Position	A-Shift	B-Shift	C-Shift
<b>Captain</b>	Banks	Wilson	Anderson
<b>Lieutenant</b>	Fuller	Moon	Sykes
<b>Engineer</b>	Burnette	Dawson	Crow
<b>Engineer</b>	Crews	Petty	Safford
<b>Firefighter</b>	Hernandez	Owens	Wilemon
<b>Firefighter</b>	Eubanks	Lucky	Wilkes
<b>Firefighter</b>	Steele	Potter	Miller
<b>Firefighter</b>	Konick	Emerson	Richardson

# **OPERATIONS DIVISION STATISTICS**

## **3 Year Comparison of Incidents by Type**

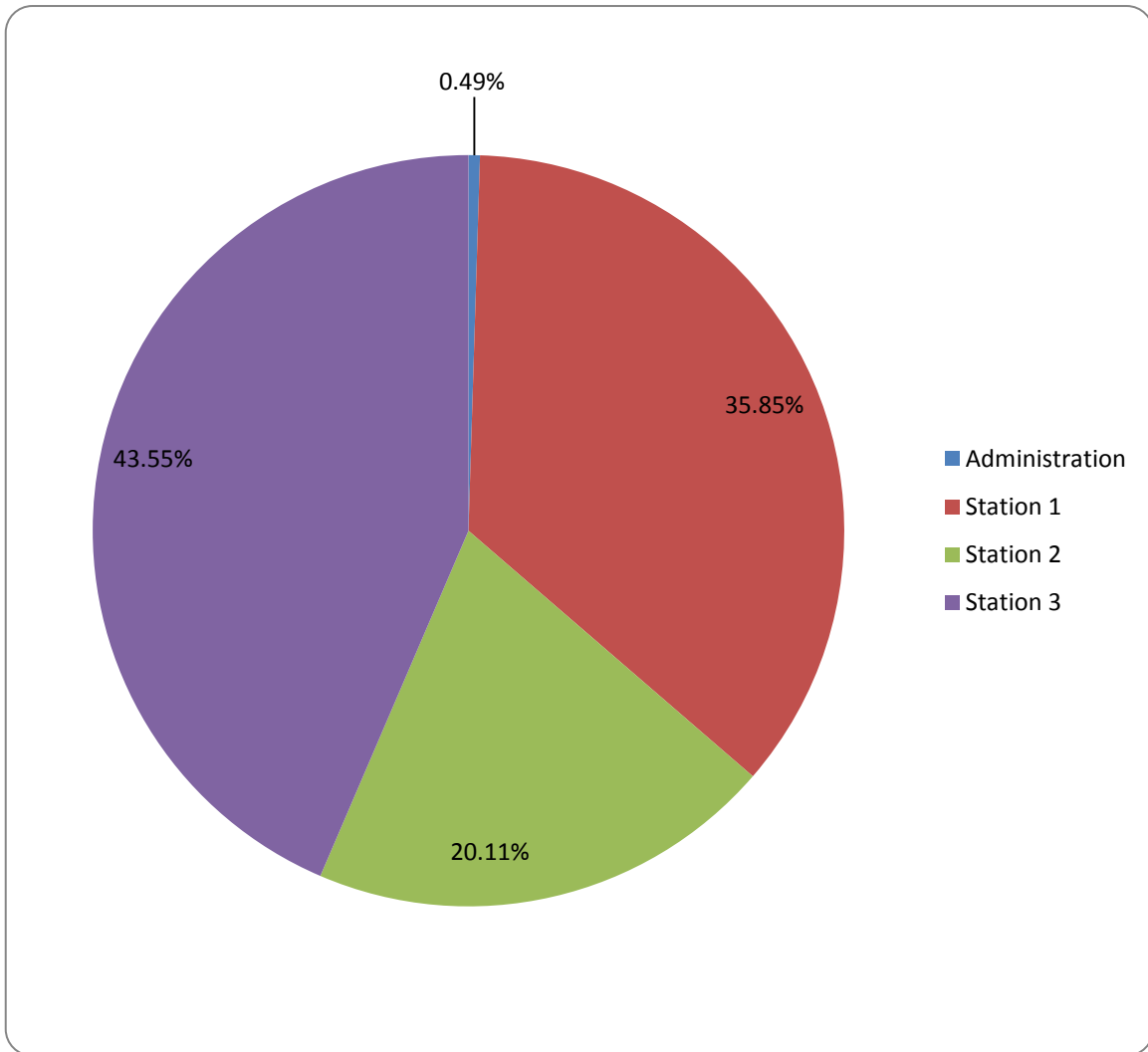
Type of Incident	2011-12	2012-13	2013-14
EMS, Med. Trauma Other Than Auto Acc.	185	285	462
EMS, Medical Other Than Trauma	1,372	1,724	2,242
<b>Total EMS</b>	<b>1,557 (51.17%)</b>	<b>2,009 (57.14%)</b>	<b>2,704 (60.36%)</b>
Fire, Commercial Structure	25	18	19
Fire, Residential Structure	55	30	60
Fire, Institution Structure	7	4	1
Fire, Other Structures	5	8	14
Fire, Motor Vehicle	31	29	33
Fire, Grass & Refuse	75	69	67
Fire, Control Burn	42	49	34
<b>Total Fires</b>	<b>240 (7.89%)</b>	<b>207 (5.89%)</b>	<b>228 (5.09%)</b>
Rescue, Auto Acc. With Injury	151	141	163
Rescue, Auto Acc. Without Injury	95	111	145
Rescue, Non-Auto Acc. With Injury	3	5	3
Rescue, Non-Auto Acc. Without Injury	15	6	7
<b>Total Rescues</b>	<b>264 (8.67%)</b>	<b>263 (7.48%)</b>	<b>318 (7.10%)</b>
Misc., Assist the Public	361	428	468
Misc., Assist Other Agencies	52	70	87
Misc., False Call	331	322	422
Misc., Power Lines, Gas Leak	126	109	143
Misc., Other	112	108	110
<b>Total Miscellaneous</b>	<b>982 (32.27%)</b>	<b>1,037 (29.49%)</b>	<b>1,230 (27.45%)</b>
<b>Total All Incidents</b>	<b>3,043</b>	<b>3,516</b>	<b>4,480</b>





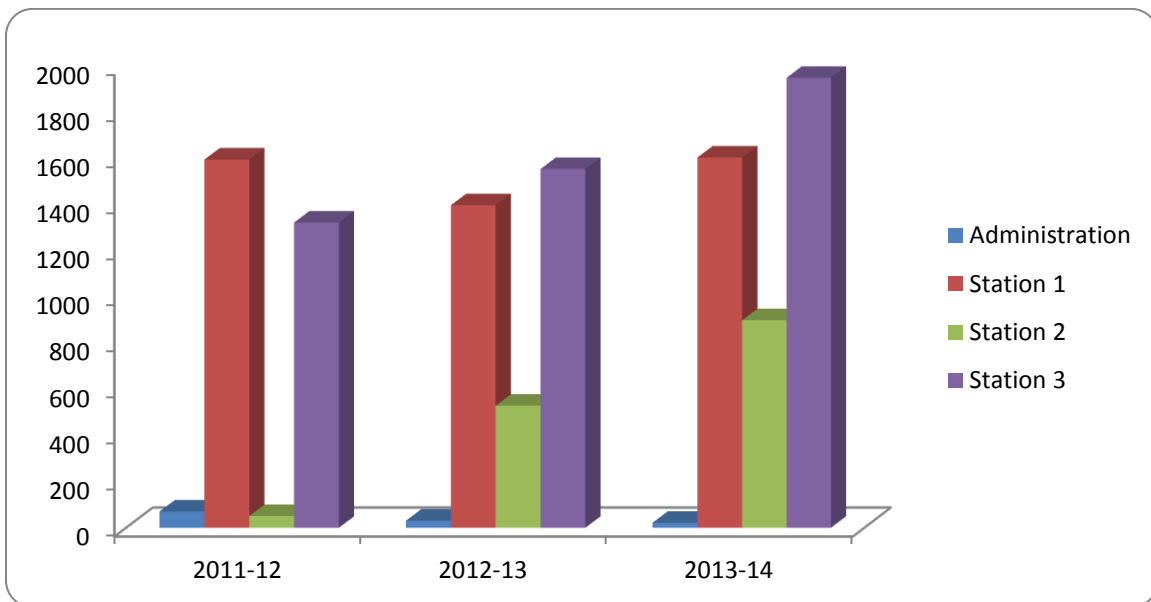
## 2013-14 Total Incidents by Station and Month

Month	Administration	Station 1	Station 2	Station 3	Monthly Total
October	3	119	51	165	338
November	0	94	72	149	315
December	2	164	79	196	441
January	2	148	98	170	418
February	3	121	61	134	319
March	4	133	83	159	379
April	1	121	76	165	363
May	0	141	64	160	365
June	2	135	71	169	377
July	2	138	80	161	381
August	1	149	78	167	395
September	2	143	88	156	389
Station Total	22	1,606	901	1,951	4480



### 3 Year Comparison of Total Incidents per Station

Station	2011-12	2012-13	2013-14
Administration	71	31	22
Station 1	1,597	1,399	1,606
Station 2	51	530	901
Station 3	1,324	1,556	1,951
<b>Total Incidents</b>	<b>3,043</b>	<b>3,516</b>	<b>4,480</b>



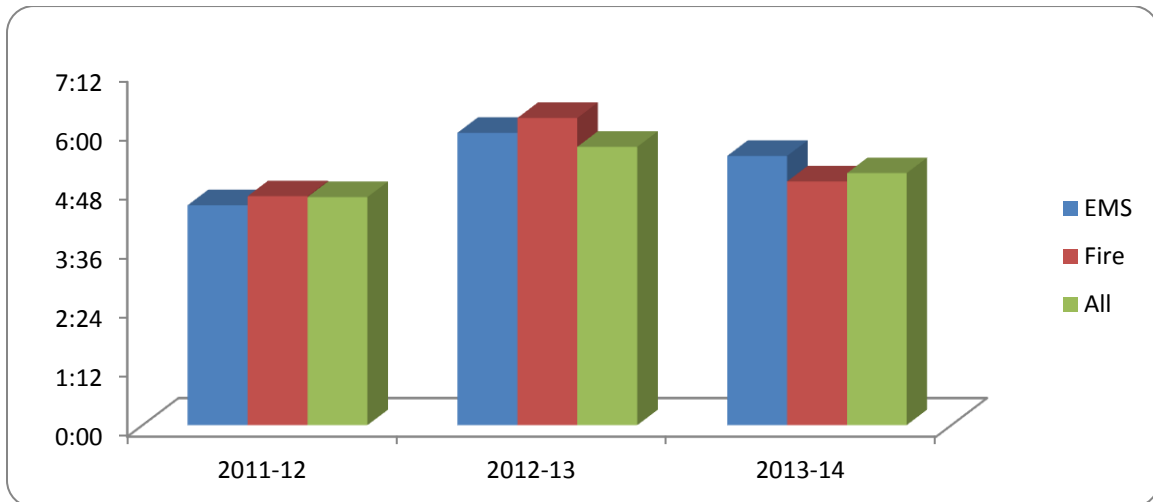
### Grass Fire Near Getzendaner Park March 12, 2014





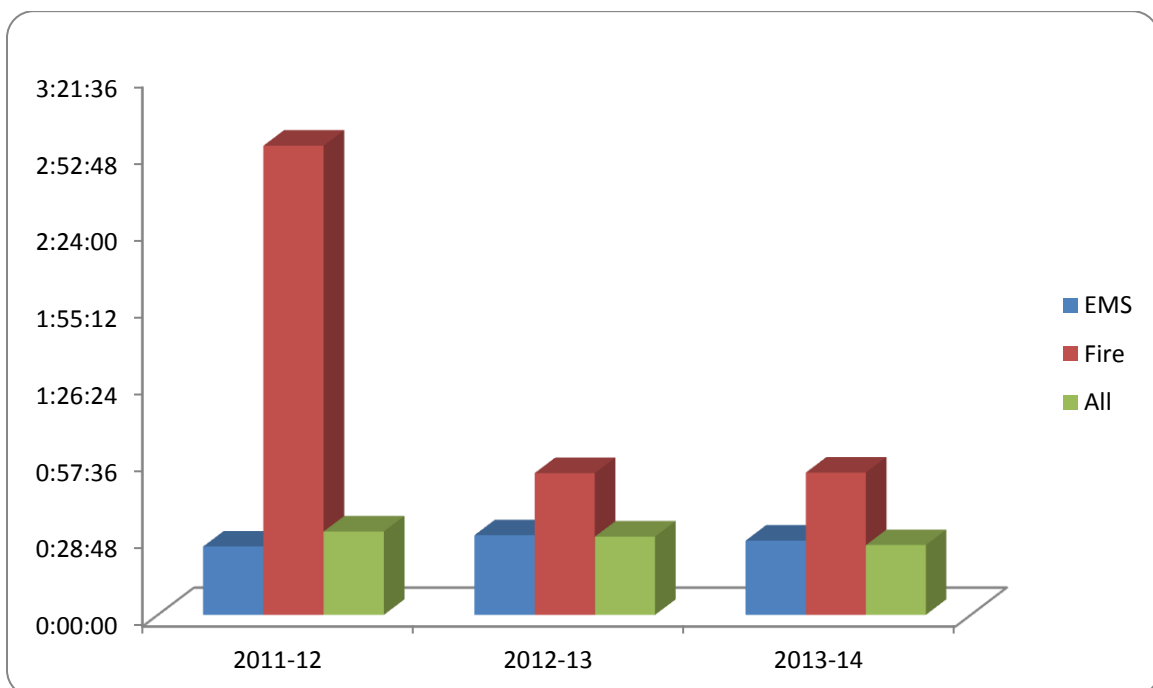
### 3 Year Comparison of Average Response Times

Incident Type	2011-12	2012-13	2013-14
EMS	4:28	5:56	5:28
Fire	4:39	6:14	4:57
All	4:38	5:39	5:07



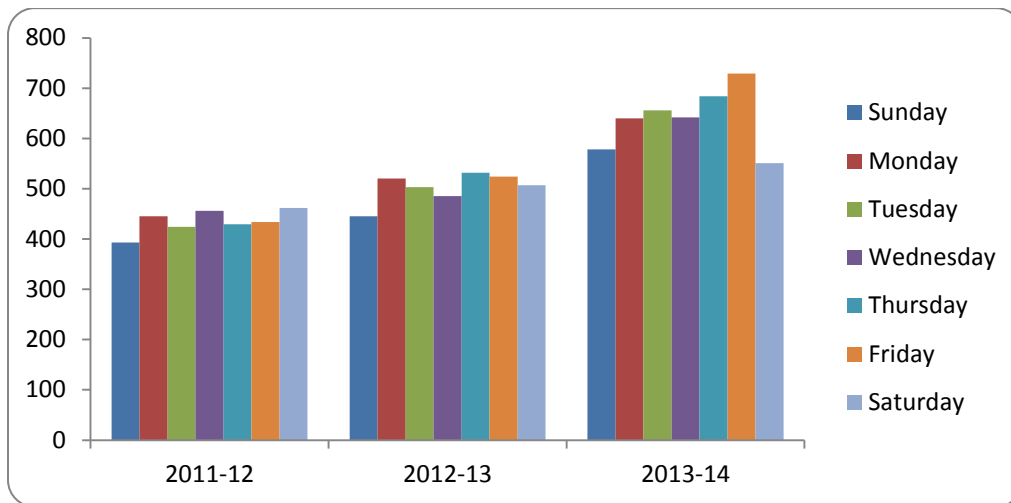
### 3 Year Comparison of Average Time on Scene

Incident Type	2011-12	2012-13	2013-14
EMS	25:37	29:51	27:49
Fire	2:55:25	53:08	53:20
All	31:17	29:20	26:10



### 3 Year Comparison of Total Incidents by Day of the Week

Day	2011-12	2012-13	2013-14
Sunday	393	445	578
Monday	445	520	640
Tuesday	424	503	656
Wednesday	456	485	642
Thursday	429	532	684
Friday	434	524	729
Saturday	462	507	551



### Elvira Restaurant Fire April 18, 2014





## 3 Year Comparison of Incidents by Time of Day

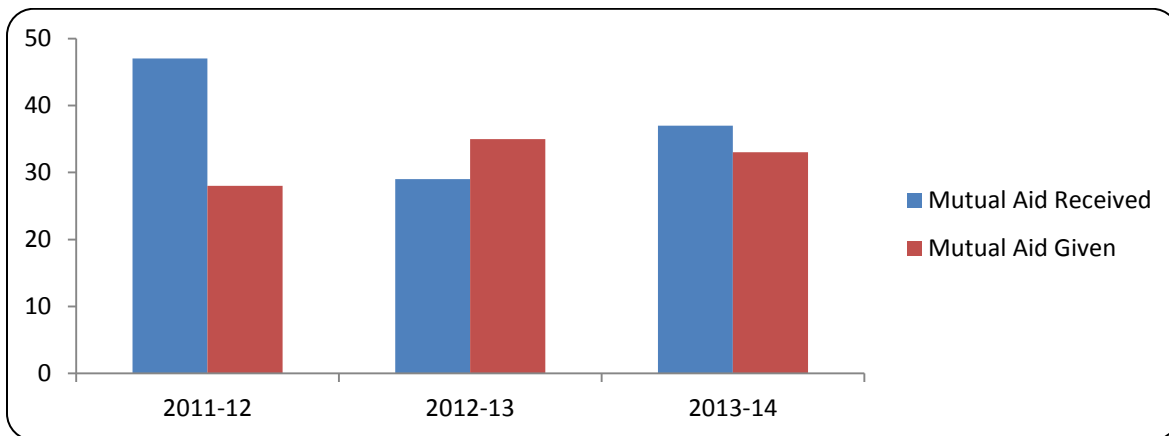
Hour	2011-12	2012-13	2013-14
0000-0059	74	64	109
0100-0159	64	84	100
0200-0259	52	76	75
0300-0359	53	66	93
0400-0459	57	56	80
0500-0559	57	64	93
0600-0659	46	66	109
0700-0759	102	122	168
0800-0859	135	152	199
0900-0959	125	195	215
1000-1059	150	176	271
1100-1159	191	220	262
1200-1259	182	179	276
1300-1359	166	202	248
1400-1459	170	213	261
1500-1559	173	223	267
1600-1659	193	225	262
1700-1759	172	197	253
1800-1859	178	171	225
1900-1959	186	185	232
2000-2059	153	178	210
2100-2159	154	180	191
2200-2259	110	124	152
2300-2359	100	98	129

## Overtaken Tractor on IH-35 June 4, 2014



### 3 Year Comparison of Mutual Aid Received

Entity Giving Aid	2011-12	2012-13	2013-14
American Red Cross	1	1	
Avalon VFD			1
Bristol VFD		1	1
Dallas Fire-Rescue	1		
DeSoto Fire-Rescue	2		
Ennis Fire Dept.	2	6	3
ESD #6	6	2	3
Ferris Fire Dept.	1	1	
Forreston VFD	1	1	2
Lancaster Fire Dept.	2		
Midlothian Fire Dept.	9	7	9
Ovilla Fire-Rescue	5	1	2
Palmer VFD		1	1
Red Oak Fire-Rescue	17	8	15
<b>Total</b>	<b>47</b>	<b>29</b>	<b>37</b>

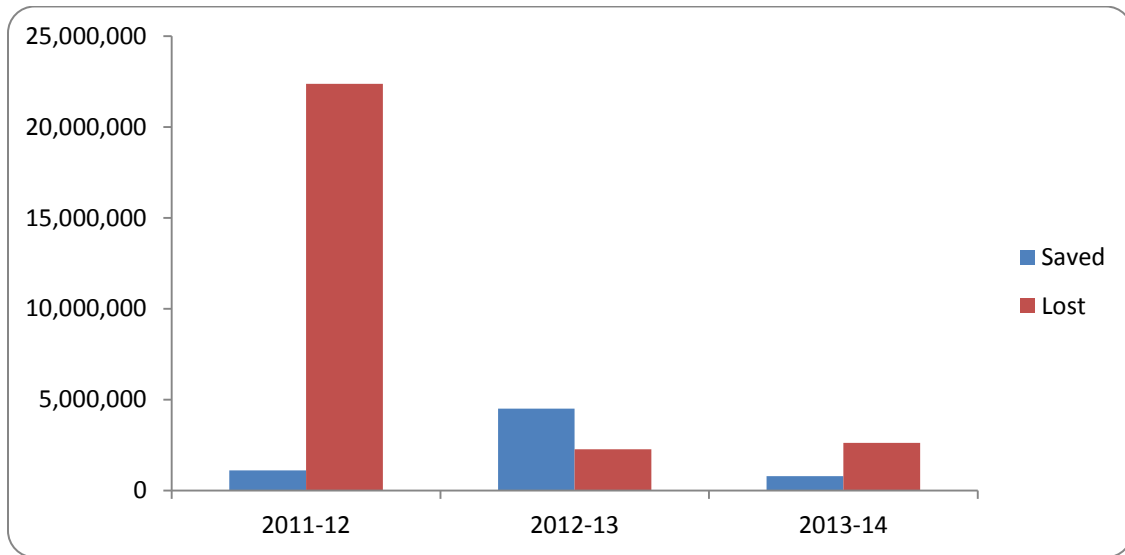


### 3 Year Comparison of Mutual Aid Given

Entity Receiving Aid	2011-12	2012-13	2013-14
Ennis Fire Dept.	2	3	1
ESD #6	9	12	6
Forreston VFD			1
Lancaster Fire Dept.	2	2	2
Maypearl VFD			2
Midlothian Fire Dept.	6	6	6
Ovilla Fire-Rescue			2
Palmer			1
Red Oak Fire-Rescue	9	12	12
<b>Total</b>	<b>28</b>	<b>35</b>	<b>33</b>

### 3 Year Comparison of Dollar Value Saved vs. Lost

Category	2011-12		2012-13		2013-14	
<b>Total \$ Value</b>	23,472,050		6,776,600		3,417,736	
	<b>Dollars</b>	<b>%</b>	<b>Dollars</b>	<b>%</b>	<b>Dollars</b>	<b>%</b>
<b>Total Saved</b>	1,111,250	4.73	4,509,624	66.55	797,036	23.32
<b>Total Lost</b>	22,360,800	95.27	2,266,976	33.45	2,620,700	76.68



### Rescue @ Waxahachie Creek June 27, 2014

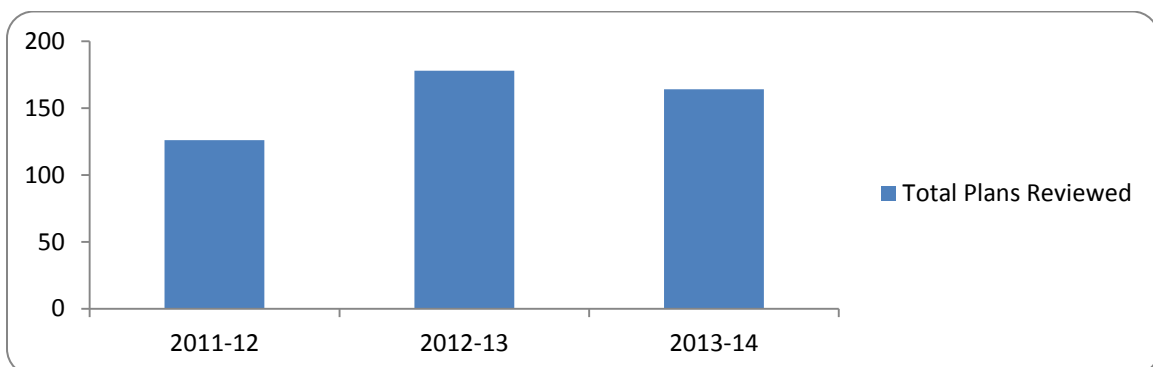


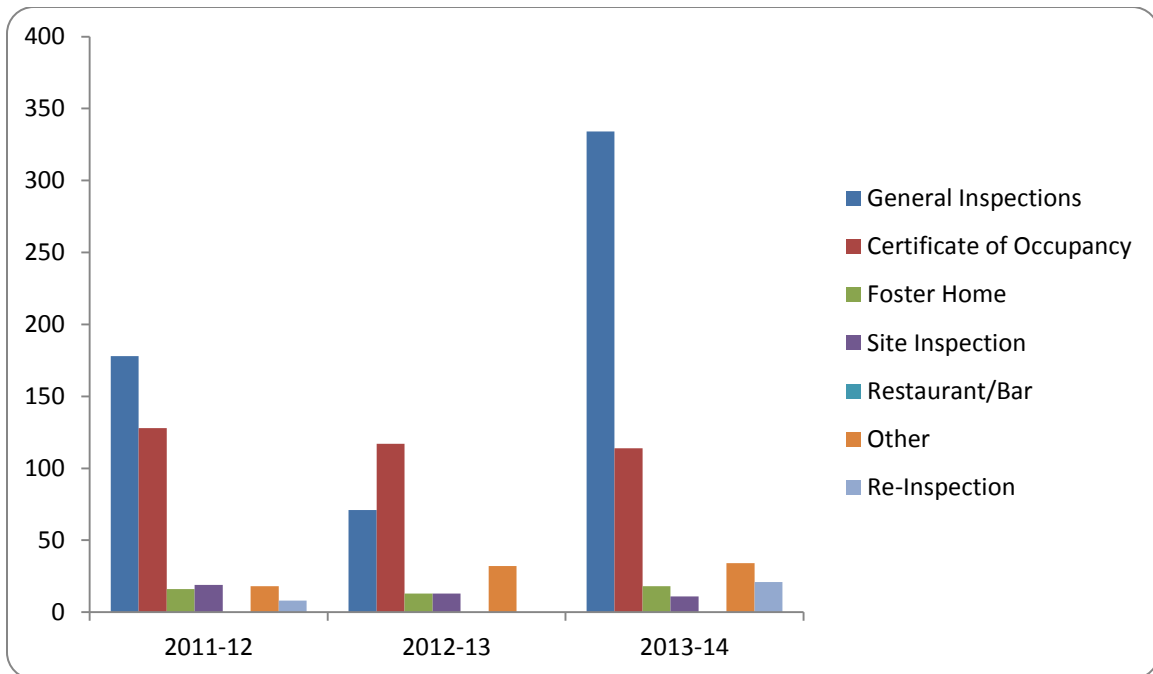


# **PREVENTION DIVISION STATISTICS**

## **3 Year Comparison of Plan Reviews**

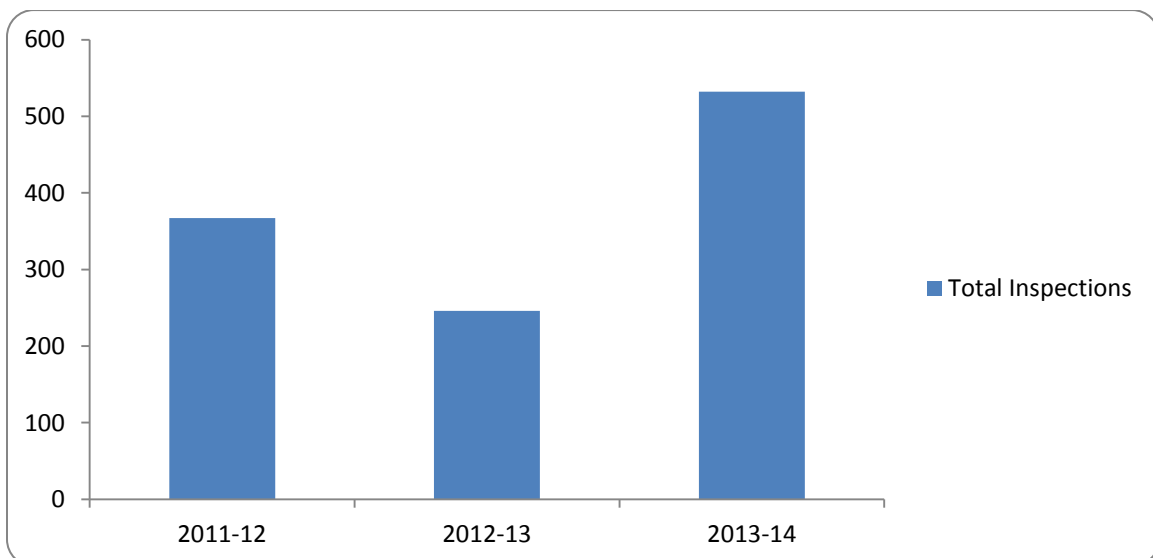
Type	2011-12	2012-13	2013-14
Construction	65	94	85
Sprinkler	14	26	19
Fire Alarm	18	8	11
Fire Suppression	5	3	4
Plats	19	27	27
Additions	3	19	3
Other	2	1	15
Total	126	178	164

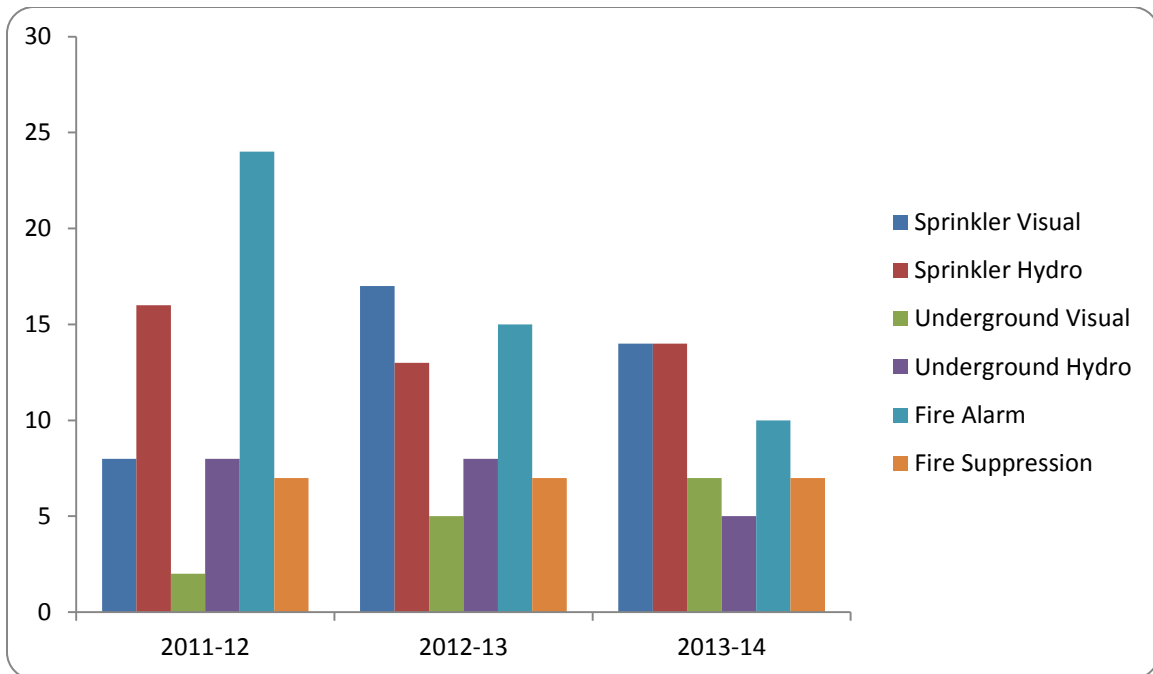




### 3 Year Comparison of Fire Inspections

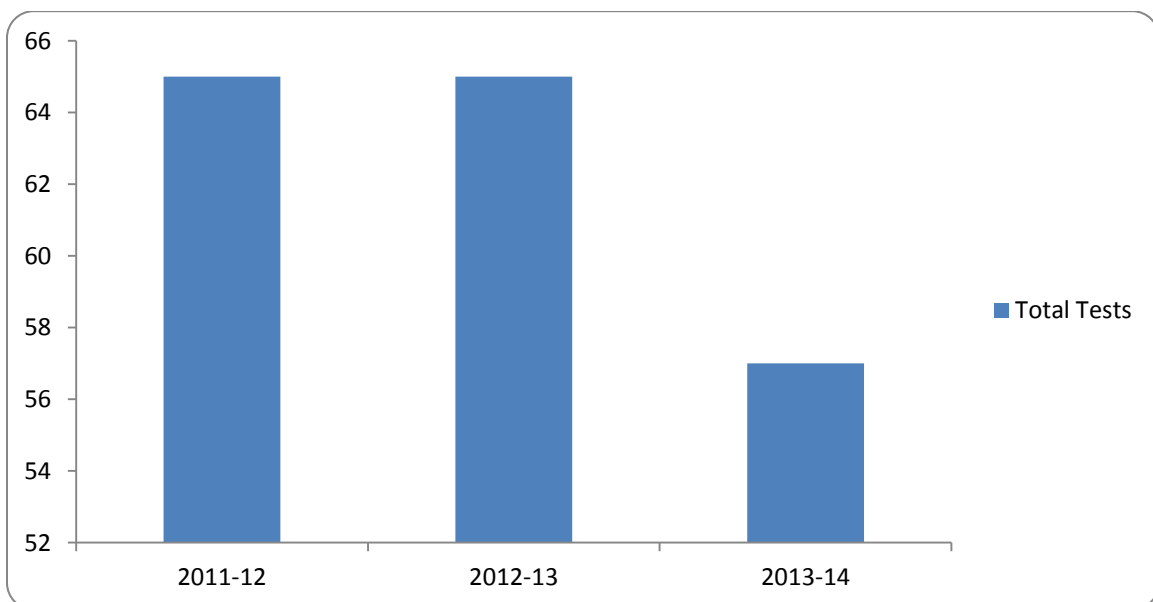
Inspection Type	2011-12	2012-13	2013-14
General Inspections	178	71	334
Certificate of Occupancy	128	117	114
Foster Home	16	13	18
Site Inspection	19	13	11
Restaurant/Bar	0	0	0
Other	18	32	34
Re-Inspection	8	0	21
<b>Total</b>	<b>367</b>	<b>246</b>	<b>532</b>





### 3 Year Comparison of Alarm & Fire Suppression Systems Tests

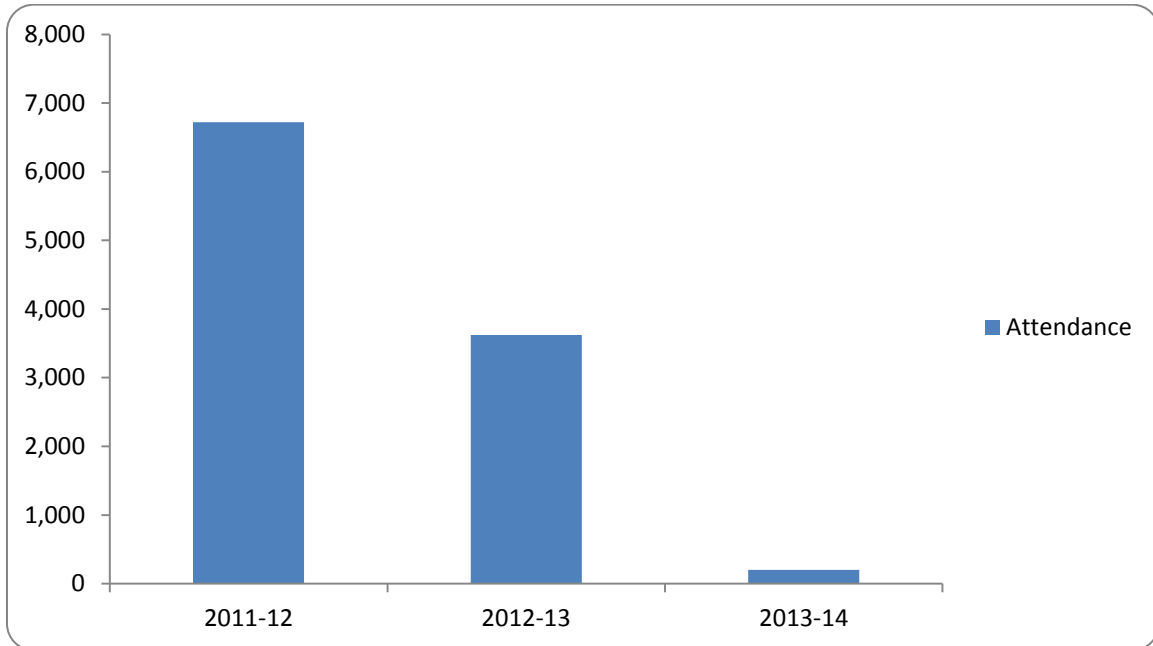
Test Type	2011-12	2012-13	2013-14
Sprinkler Visual	8	17	14
Sprinkler Hydro	16	13	14
Underground Visual	2	5	7
Underground Hydro	8	8	5
Fire Alarm Test	24	15	10
Fire Suppression Test	7	7	7
<b>Total</b>	<b>65</b>	<b>65</b>	<b>57</b>





## 3 Year Comparison of Public Education Presentations

2011-12		2012-13		2013-14	
Presentations	Attendance	Presentations	Attendance	Presentations	Attendance
44	6,719	16	3,621	9	200



## Waxahachie 101 October 10, 2013



## **COMMUNITY INVOLVEMENT**

### **Toys for Kids December 2013**



### **Chenault Drive Dedication October 18, 2013**





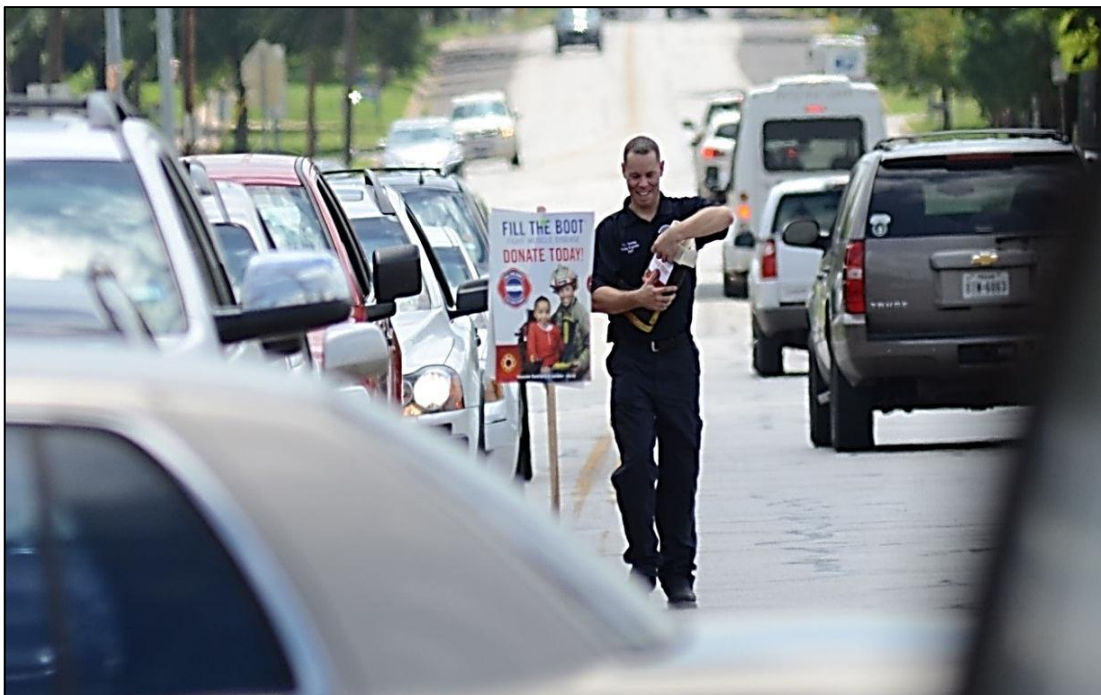
## MDA Benefit Lunch @ Logan's Roadhouse February 27, 2014



## 3 Year Comparison of MDA Collections

2011-12	2012-13	2013-14
8,678.61	17,895.43	20,714.82

## MDA Fill the Boot April 22 – 24, 2014





## Global High Presentation March 27, 2014



## Race 4 West April 12, 2014





## Fourth of July Parade



## Firefighter Summer Games July 20-25, 2014





## ALS Challenge August 28, 2014



## 9/11 Memorial Stair Climb @ Renaissance Hotel Dallas





## HEB Breakfast September 8, 2014

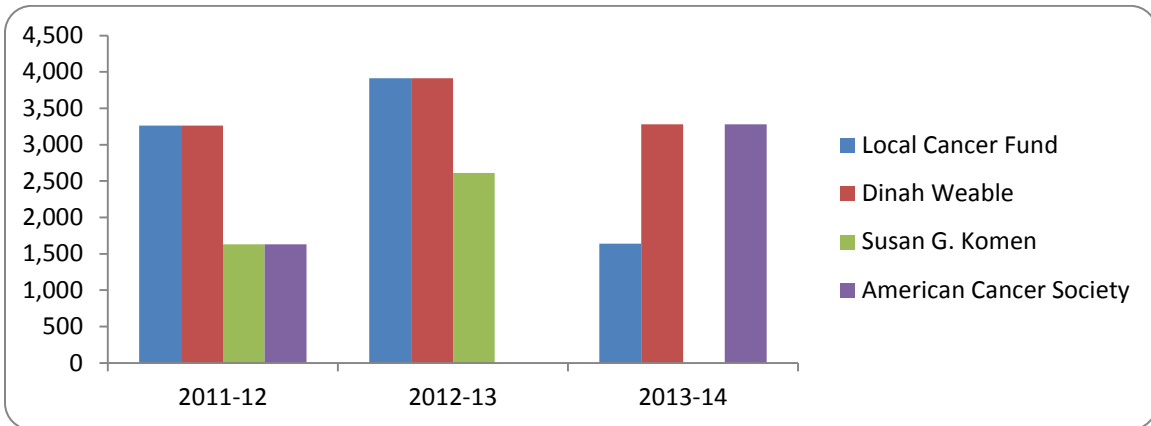


## 9/11 Memorial @ 9<sup>th</sup> Grade Academy



### 3 Year Comparison of WFR Cares Enough to Wear Pink Campaign

Charity	2010-11	2011-12	2012-13
Local Cancer Fund	3,262.50	3,915.00	1,640.28
Dinah Weable	3,262.50	3,915.00	3,280.56
Susan G. Komen	1,631.25	2,610.00	0.00
American Cancer Society	1,631.25	0.00	3,280.56
<b>Total</b>	<b>9,787.50</b>	<b>10,440.00</b>	<b>8,201.40</b>





## Hope Koonsman Golf Tournament September 13, 2014



## Saving a Cop – Priceless

