



# **Waxahachie Fire-Rescue**

**Annual Report**

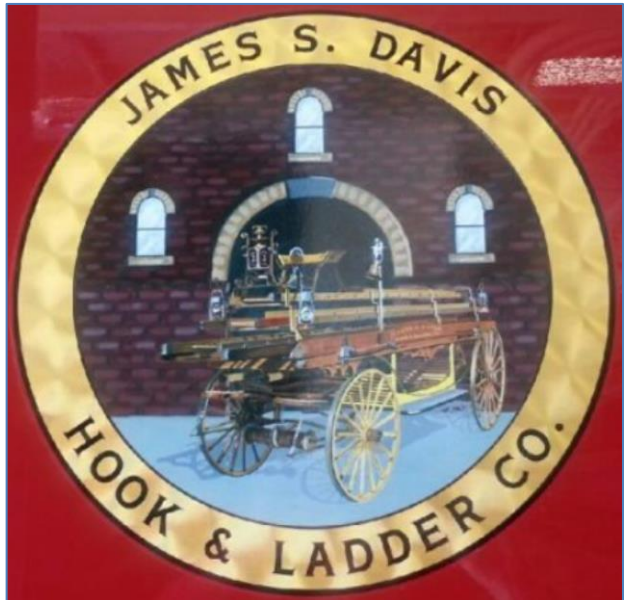
**Fiscal Year 2014-15**

## Howdy...Thanks for Stopping By



# **TABLE OF CONTENTS**

Introduction.....	3
Mission, Vision and Value Statements.....	4
2014-15 Highlights.....	5-12
Organizational Chart.....	13
Authorized Personnel.....	14
Budget Information.....	15
Fire Administration.....	16
Fire Station # 1.....	17-18
Fire Station # 2.....	19-20
Fire Station # 3.....	21-22
Operations Division Statistics.....	23-30
Training Division Statistics.....	31-32
Prevention Division Statistics.....	33-36
Community Involvement.....	37-43



## **INTRODUCTION**

The American fire service is built upon tradition, respect, honor, and dedication to the service of others. Waxahachie Fire-Rescue has enjoyed a rich history of serving the citizens, visitors, and businesses of the City of Waxahachie since 1883. The reputation of this department is one of excellence and professionalism.

With the support of the citizens and businesses of Waxahachie, Mayor, City Council, our City Manager and his staff, as well as the other City departments and supporting governmental agencies, we continue to be an exemplary organization that prides itself on being proactive, efficient, and exceptionally effective in our delivery of services.

While we are blessed to be supplied with the very best equipment and training available, nothing can take the place of our most important asset- the men and women of this Department who dedicate their lives to serving others. And so, with this in mind, I would like to take this opportunity to thank our members for the exceptional service they provide on a daily basis as well as to their family members for sharing them with this Department and the City of Waxahachie.

In a team effort, we are committed to provide the best possible proactive approach to fire and life safety, prevention and education. We will pursue excellence in every aspect of our mission. Our goal is to continue to work together to make our city a safe and productive environment for all concerned. In doing so, every citizen can be ensured that our mission will be accomplished in a fashion which reflects this Department's dedication to outstanding customer and community service.

It is our honor and privilege to serve the 32,000 citizens of the City of Waxahachie with an ISO Class 2/10 fire department. While we strive for increased knowledge and capabilities, we must also ensure that we document our past activities and accomplishments. As such, we are proud to hereby present the 2014-15 Annual Report for Waxahachie Fire-Rescue.

*Ricky Boyd*, Fire Chief  
Waxahachie Fire-Rescue



## **MISSION STATEMENT**

To protect life and property from fire through strong prevention, public education, code enforcement and suppression programs and to establish the best rescue and pre-hospital care plan possible.

## **VISION STATEMENT**

We envision a city where citizens can live comfortably knowing their lives and property are protected by a department staffed with proficient, caring, dedicated people and where all citizens are educated about fire prevention and other public safety concerns.

## **VALUE STATEMENTS**

**Positive Attitudes-** We value a positive attitude toward the City and this department.

**Professionalism-** We value pride in our department and pride in the quality of work we are privileged to perform. Our conduct, both on and off duty, is a reflection of our professional commitment.

**Service Orientation-** We value a commitment to service. We recognize a service responsibility to other City departments and to every element of our business and neighborhood community. Our performance must ultimately be judged by the satisfaction of those we serve.

**Teamwork-** We value teamwork. No one is as effective alone as they are with the cooperative help of others. We encourage all members to work together as equal partners.

**Innovation-** We value and encourage the challenge of new ideas and technology. Therefore, we encourage resourceful self-motivation.

**Performance-** We are committed to personal and professional development. We encourage training, education, and skill development on an on-going basis. We are committed to safety and to policies that encourage the mental and physical health of our most valuable asset, our members.

**Equal Opportunity-** Waxahachie Fire-Rescue is an equal opportunity employer and strongly supports and promotes equal opportunity for every individual.

# **2014-15 HIGHLIGHTS**

- Promotions:
  - On November 9, 2014, Julio Hernandez was promoted to the rank of Pump Engineer
  - On November 9, 2014, Matt Dorsey was promoted to the rank of Lieutenant
  - On November 9, 2014, Candon Birdwell was promoted to the rank of Captain
  - On November 9, 2014, Don Alexander was promoted to the rank of Battalion Chief
- New Hires:
  - Kevin Lindsey joined the WFR on November 9, 2014
  - Joe Lynn joined the WFR on September 8, 2015
  - Danny Driskell joined the WFR on September 8, 2015
- 2014 Firefighter of the Year: Matt Rodgers
- Responded to 4,866 calls for emergency service
- Apparatus:
  - Placed a new 2014 Pierce 105' Dash CF Aerial in service as Truck 3 on October 31, 2014
  - Retained the 1997 Pierce 105' Aerial as XT-2
  - Completed the Mack restoration project
  - Placed a new 2015 Chevy Tahoe in service as 800
- Completed the Firehouse/CRIMES interface on November 20, 2014
- Placed 5 new Physio Lifepak 15 12-Lead units in service on December 4, 2014
- Began the Annual Medical Physical Program in January 2015
- ETMC-EMS assigned their contract for ambulance service to CareFlite on March 1, 2015
- Began the RFP process for a new ambulance provider on March 25, 2015
- Work began on the Station 3 Remodel Project in August 2015

## Truck 3 Push Back Ceremony October 31, 2014



## Wreck at I-35 & Ganaway Overpass November 14, 2014





## Shield & Promotional Ceremony November 21, 2014



## I-35 Salsa Wreck November 22, 2014





## **1962 Mack Restoration Completed November 2014**



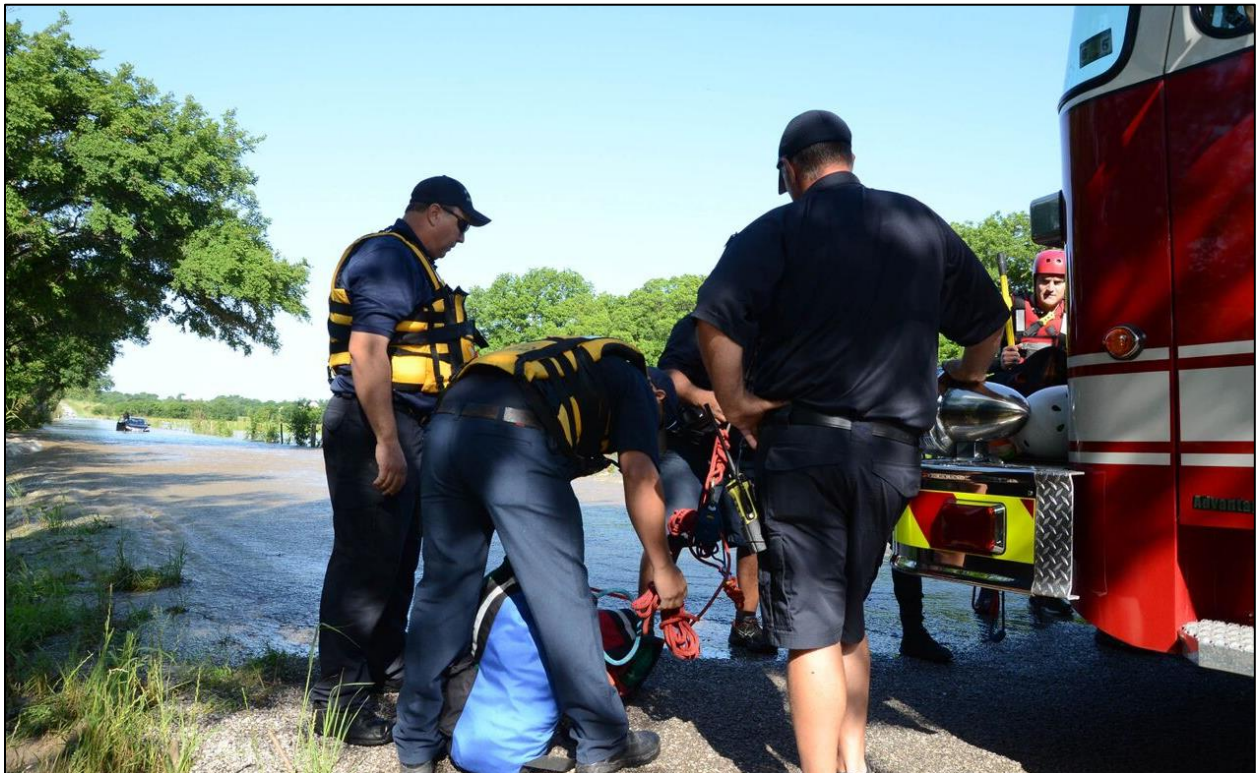
## **608 Kaufman Street Fire February 5, 2015**



## Chambers Creek Swift Water Rescue April 28, 2015



## Pigg Road Swift Water Rescue June 5, 2015





## **Liberty Dialysis Explosion July 21, 2015**

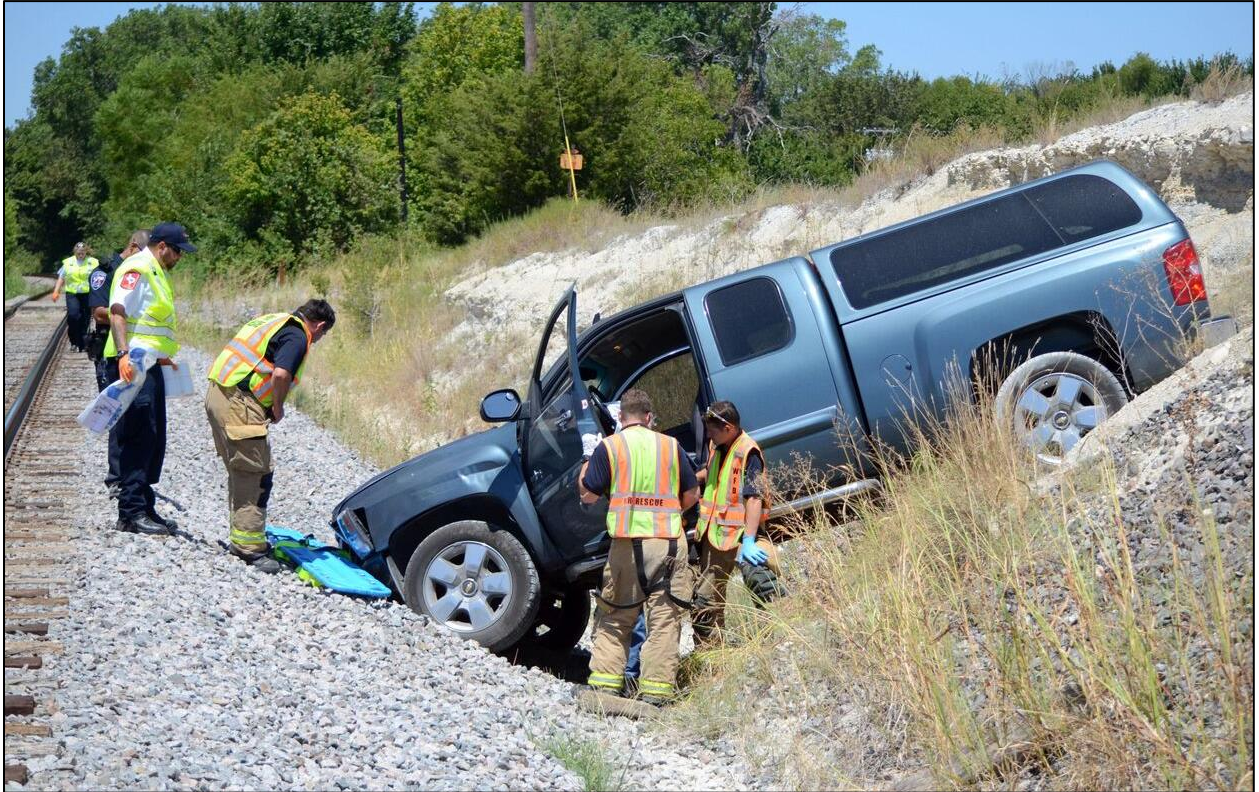


## **113 Arabian Explosion September 21, 2015**

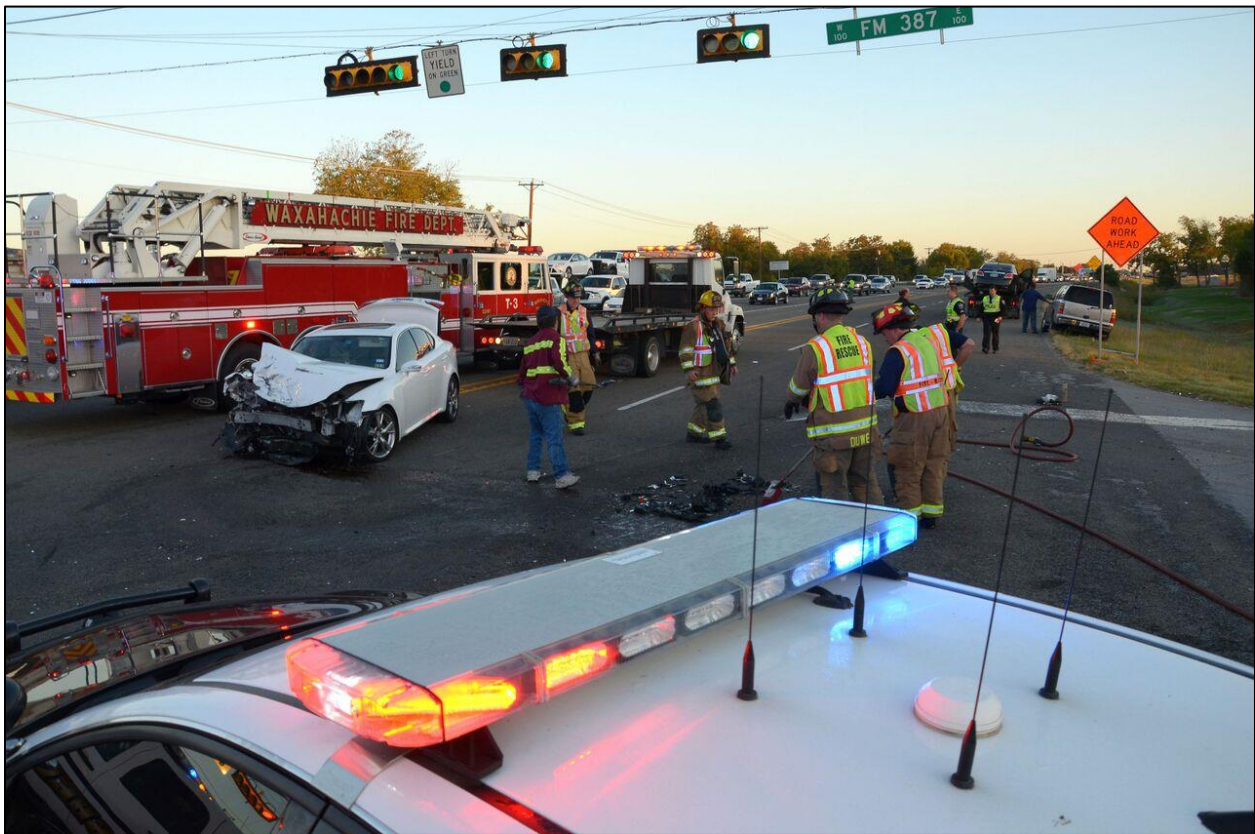




## Various Major Accidents







# WAXAHACHIE FIRE-RESCUE

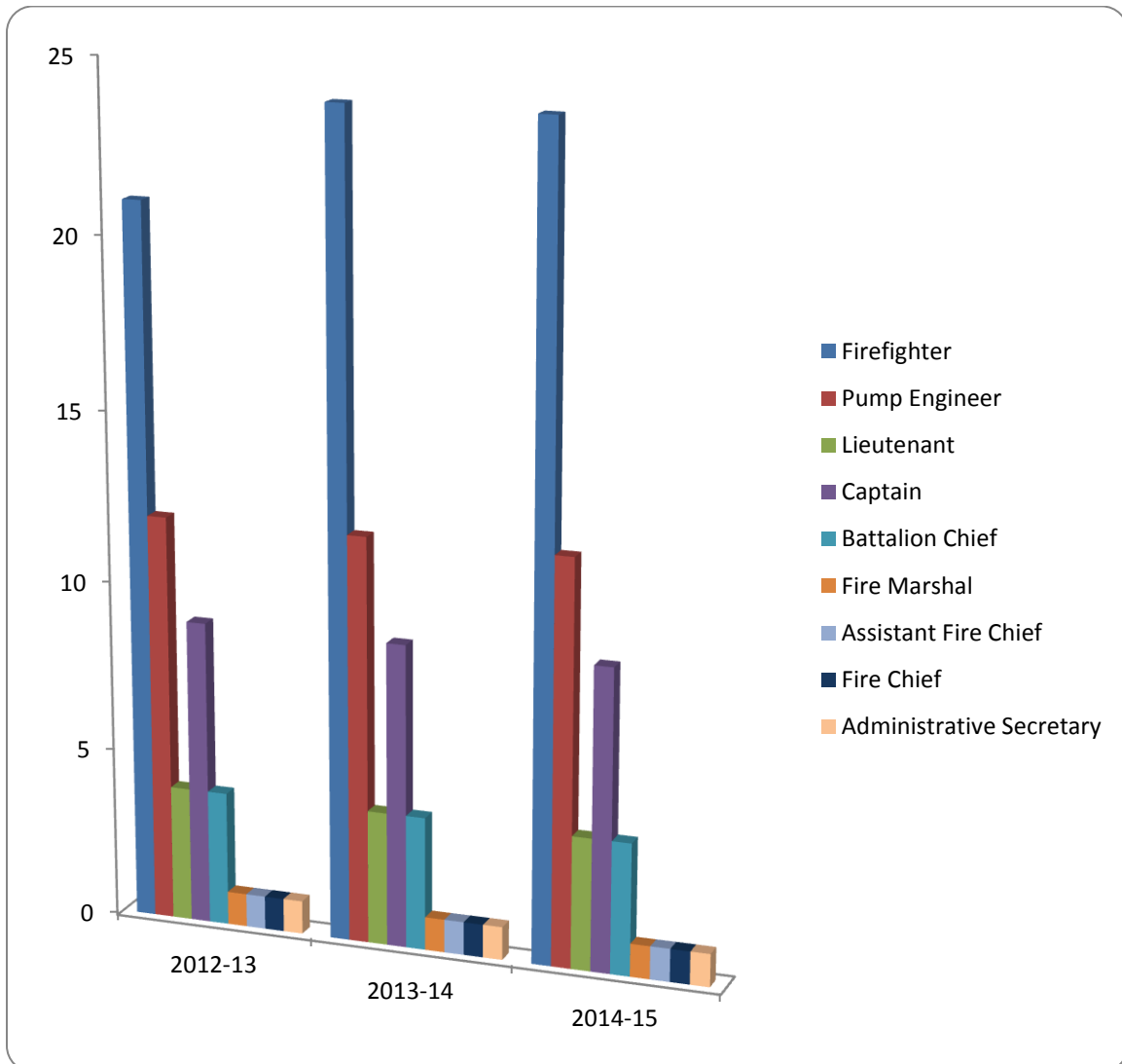
## ORGANIZATIONAL CHART





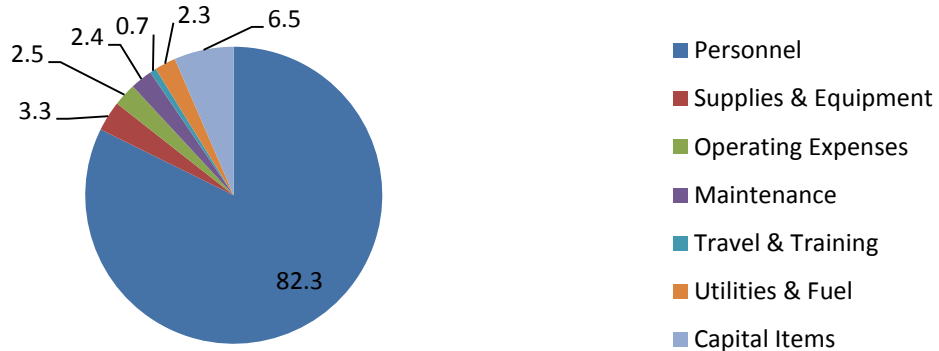
## **AUTHORIZED PERSONNEL**

Position	2012-13	2013-14	2014-15
Fire Chief	1	1	1
Assistant Fire Chief	1	1	1
Fire Marshal	1	1	1
Battalion Chief	4	4	4
Captain	9	9	9
Lieutenant	4	4	4
Pump Engineer	12	12	12
Firefighter	21	24	24
Administrative Secretary	1	1	1
<b>Total</b>	<b>54</b>	<b>57</b>	<b>57</b>



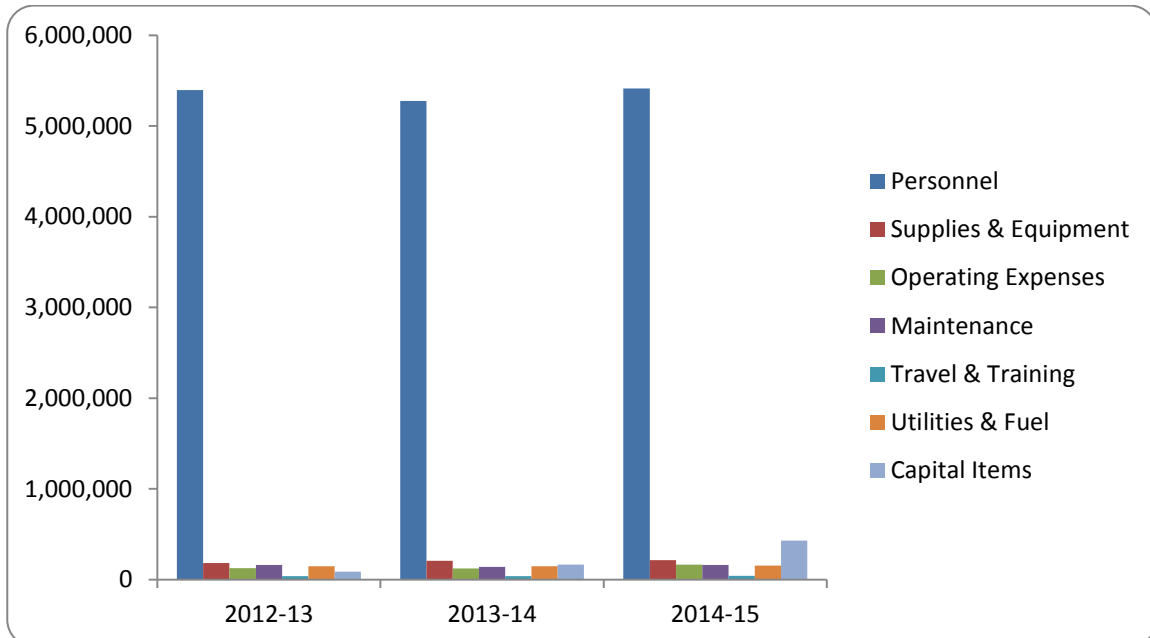
## **BUDGET INFORMATION**

**2014-15 Budget by Account Percentages**



### **3 Year Comparison of the WFR Budget by Account Type**

Budget Category	2012-13		2013-14		2014-15	
	Dollars	%	Dollars	%	Dollars	%
<b>Personnel</b>	5,394,510	87.8	5,274,829	86.6	5,411,920	82.3
<b>Supplies &amp; Equipment</b>	184,000	3.0	206,445	3.4	213,500	3.3
<b>Operating Expenses</b>	126,440	2.1	121,526	2.0	164,100	2.5
<b>Maintenance</b>	163,000	2.7	140,759	2.3	160,500	2.4
<b>Travel &amp; Training</b>	37,000	0.6	37,806	0.6	43,000	0.7
<b>Utilities &amp; Fuel</b>	148,800	2.4	148,241	2.4	153,560	2.3
<b>Capital Items</b>	88,000	1.4	163,800	2.7	428,250	6.5
<b>Total</b>	6,141,750		6,093,406		6,574,830	



# **FIRE ADMINISTRATION**



## **Address**

407 Water Street

## **Year Opened**

1985

## **Apparatus Assigned**

800: 2015 Chevy Tahoe  
801: 2010 Ford Explorer  
802: 2012 Chevy Tahoe  
803: 2014 Chevy Tahoe  
804: 2010 Ford Explorer  
805: 2008 Ford Explorer

## **Personnel Assigned**

Ricky Boyd, Fire Chief  
Dennis Crecelius, Fire Marshal  
Randall Potter, Assistant Fire Chief  
Gary Myers, Battalion Chief  
Matt Dorsey, Lieutenant  
Cindy Rayford, Administrative Assistant



# **FIRE STATION # 1**



## **Address**

408 W. Main Street

## **Year Opened**

1963

## **Apparatus**

Engine 1: 2007 Pierce Arrow XT

XE-1: 1994 Pierce Saber

Booster 1: 2012 F-550

Off-Road 1: 2005 Cub Cadet

## **Minimum Staffing**

3



### Personnel Assigned

Position	A-Shift	B-Shift	C-Shift
Captain	Irvin	Maeker	Griffin
Engineer	Vest	Hernandez	Muetzenberg
Firefighter	Steele	Koonsman	Donelson
Firefighter	Lindsey	Wade	Duwe

## **FIRE STATION # 2**



### **Address**

1601 Cleaver Street

### **Year Opened**

2012

### **Apparatus**

Engine 2: 2011 Pierce Arrow XT  
Battalion 1: 2014 Ford F-350  
XE-2: 2000 Pierce Dash  
XT-2: 1997 Pierce Arrow 105' Quint  
Squad 2: 2004 Ford F-250  
Boat 2: 1995 Rescue 1 Connector Boat  
Dive Team/Rescue Trailer  
Clown Program Trailer

### **Minimum Staffing**

4





### Personnel Assigned

Position	A-Shift	B-Shift	C-Shift
Battalion Chief	Muirhead	Rodgers	Alexander
Captain	Marrs	Birdwell	Brown
Engineer	Townley	Sodek	Martin
Firefighter	Seaberry	Morrill	Rodgers
Firefighter	Altom	Young	Jordan

## **FIRE STATION # 3**



### **Address**

200 YMCA Drive

### **Year Opened**

1986

### **Apparatus**

Engine 3: 2005 Pierce Arrow XT  
Truck 3: 2014 Pierce 105' Dash CF Aerial  
Booster 3: 2007 F-450

### **Minimum Staffing**

6



### Personnel Assigned

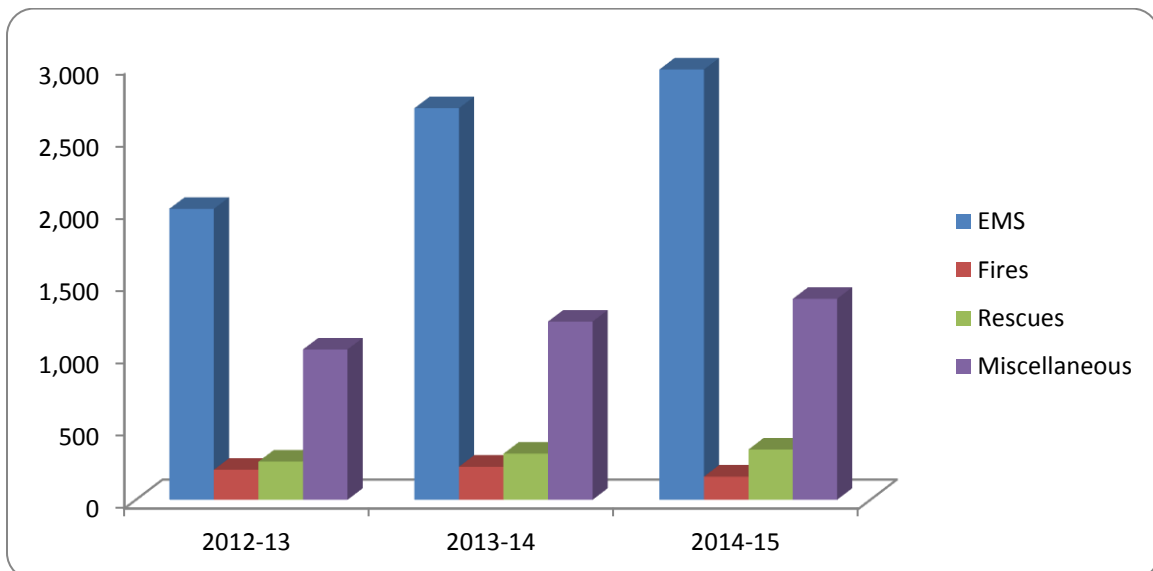
Position	A-Shift	B-Shift	C-Shift
<b>Captain</b>	Banks	Wilson	Anderson
<b>Lieutenant</b>	Fuller	Moon	Sykes
<b>Engineer</b>	Burnette	Dawson	Crow
<b>Engineer</b>	Crews	Petty	Safford
<b>Firefighter</b>	Eubanks	Owens	Wilemon
<b>Firefighter</b>	Nava	Lucky	Wilkes
<b>Firefighter</b>	Douglas	Potter	Miller
<b>Firefighter</b>	Konick	Emerson	Richardson



# **OPERATIONS DIVISION STATISTICS**

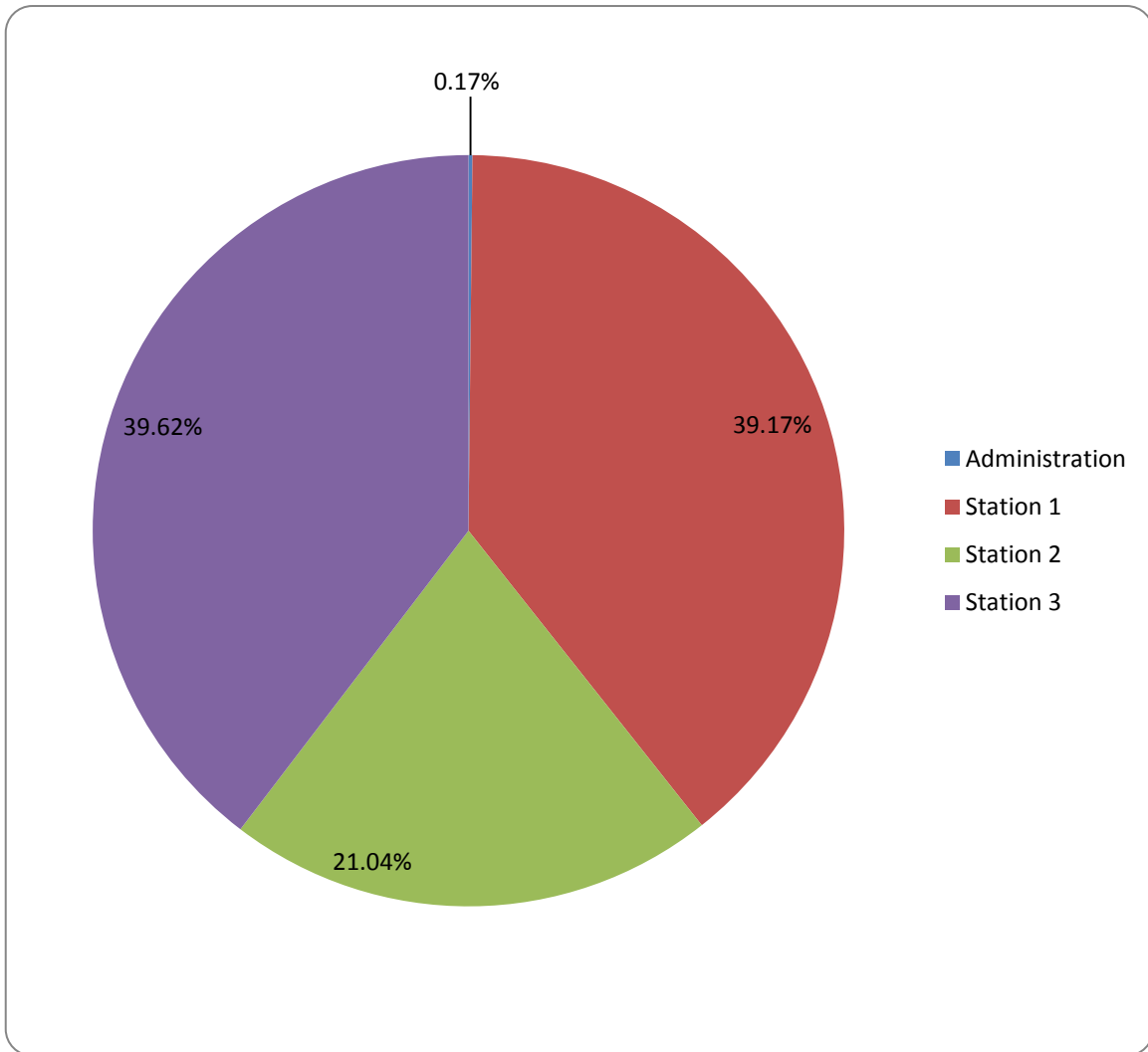
## **3 Year Comparison of Incidents by Type**

Type of Incident	2012-13	2013-14	2014-15
EMS, Med. Trauma Other Than Auto Acc.	285	462	457
EMS, Medical Other Than Trauma	1,724	2,242	2,515
<b>Total EMS</b>	<b>2,009 (57.14%)</b>	<b>2,704 (60.36%)</b>	<b>2,972 (61.08%)</b>
Fire, Commercial Structure	18	19	18
Fire, Residential Structure	30	60	37
Fire, Institution Structure	4	1	2
Fire, Other Structures	8	14	11
Fire, Motor Vehicle	29	33	20
Fire, Grass & Refuse	69	67	42
Fire, Control Burn	49	34	30
<b>Total Fires</b>	<b>207 (5.89%)</b>	<b>228 (5.09%)</b>	<b>160 (3.29%)</b>
Rescue, Auto Acc. With Injury	141	163	170
Rescue, Auto Acc. Without Injury	111	145	153
Rescue, Non-Auto Acc. With Injury	5	3	4
Rescue, Non-Auto Acc. Without Injury	6	7	20
<b>Total Rescues</b>	<b>263 (7.48%)</b>	<b>318 (7.10%)</b>	<b>347 (7.13%)</b>
Misc., Assist the Public	428	468	517
Misc., Assist Other Agencies	70	87	120
Misc., False Call	322	422	500
Misc., Power Lines, Gas Leak	109	143	135
Misc., Other	108	110	115
<b>Total Miscellaneous</b>	<b>1,037 (29.49%)</b>	<b>1,230 (27.45%)</b>	<b>1,387 (28.50%)</b>
<b>Total All Incidents</b>	<b>3,516</b>	<b>4,480</b>	<b>4,866</b>



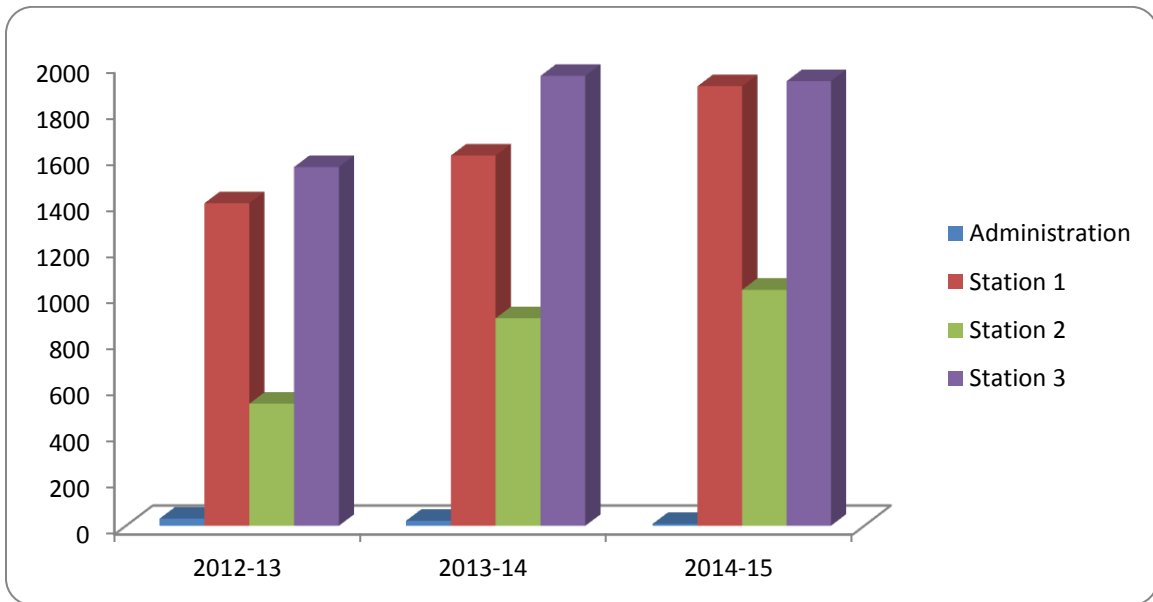
## 2014-15 Total Incidents by Station and Month

Month	Administration	Station 1	Station 2	Station 3	Monthly Total
October	3	156	87	179	425
November	1	141	84	149	375
December	0	142	66	195	403
January	0	165	69	174	408
February	0	146	74	159	379
March	0	145	78	169	392
April	1	158	76	154	389
May	1	170	96	163	430
June	2	152	98	162	414
July	0	199	89	125	413
August	0	154	100	136	390
September	0	178	107	163	448
Station Total	8	1,906	1,024	1,928	4,866



### 3 Year Comparison of Total Incidents per Station

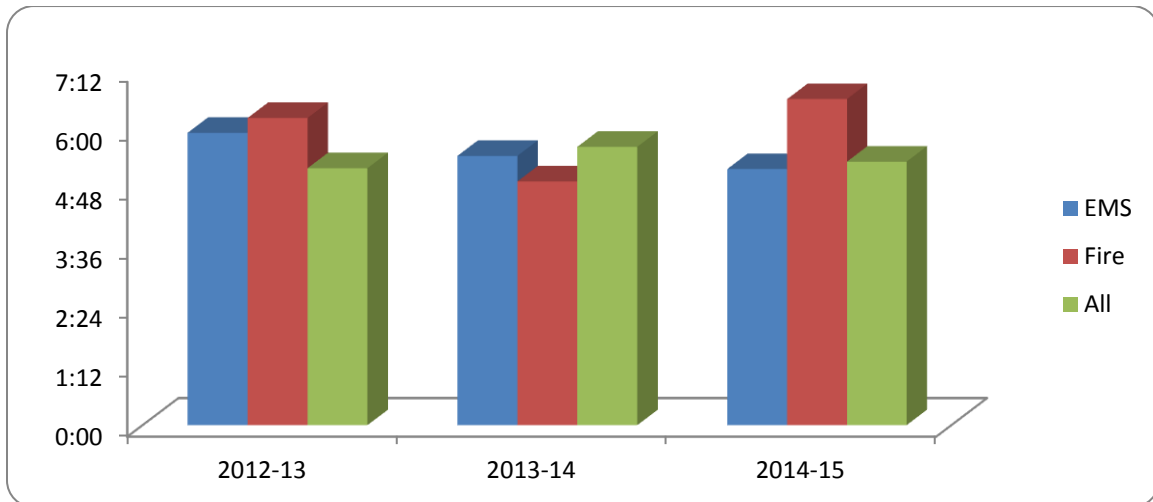
Station	2012-13	2013-14	2014-15
Administration	31	22	8
Station 1	1,399	1,606	1,906
Station 2	530	901	1,024
Station 3	1,556	1,951	1,928
<b>Total Incidents</b>	<b>3,516</b>	<b>4,480</b>	<b>4,866</b>





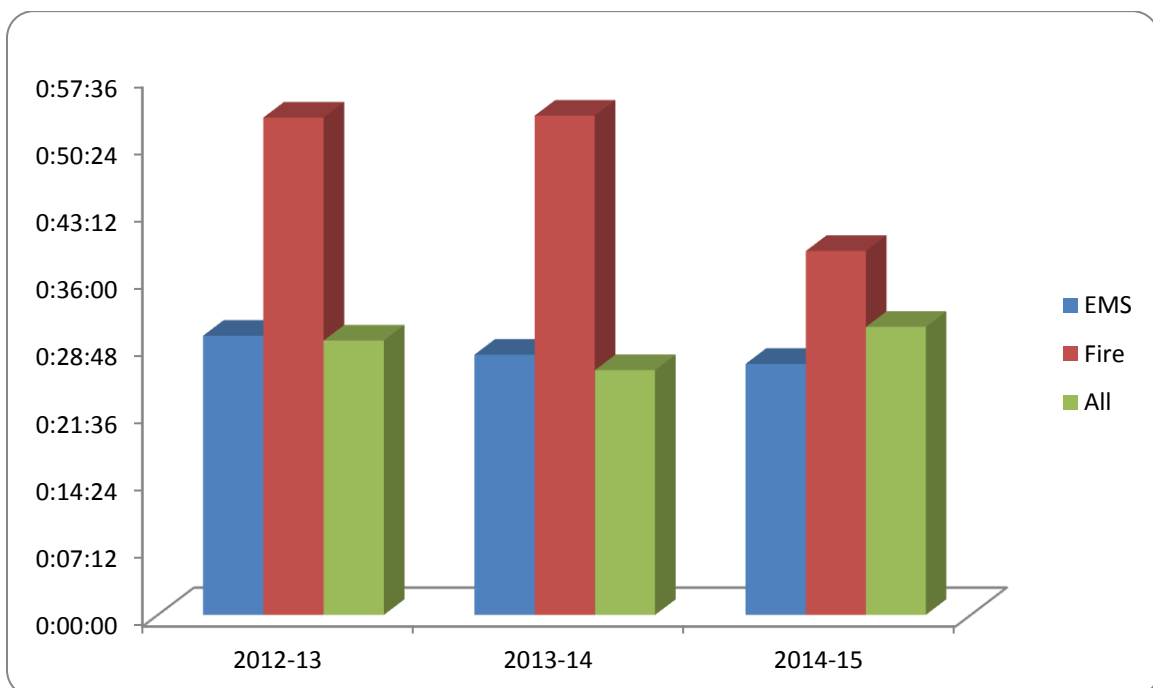
### 3 Year Comparison of Average Response Times

Incident Type	2012-13	2013-14	2014-15
EMS	5:56	5:28	5:13
Fire	6:14	4:57	5:39
All	5:39	5:07	5:21



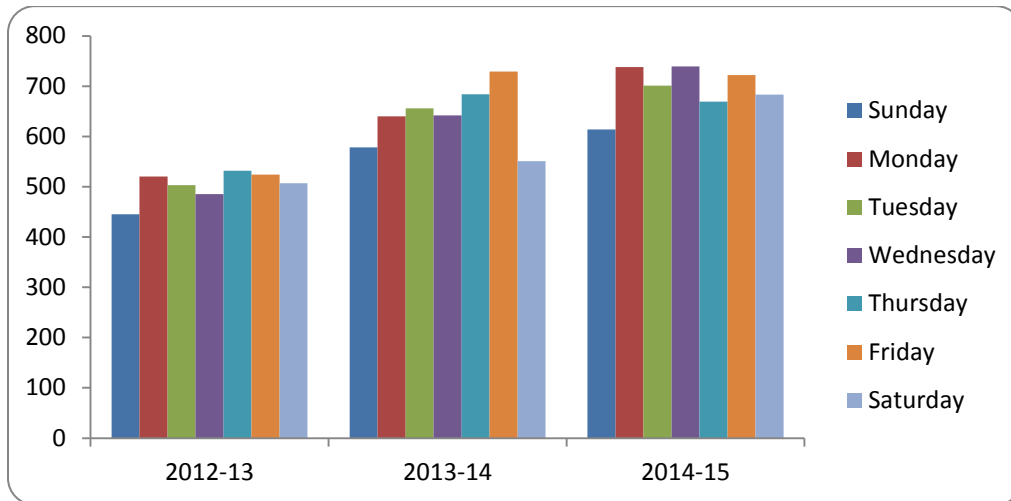
### 3 Year Comparison of Average Time on Scene

Incident Type	2012-13	2013-14	2014-15
EMS	29:51	27:49	26:50
Fire	53:08	53:20	38:53
All	29:20	26:10	30:47



### 3 Year Comparison of Total Incidents by Day of the Week

Day	2012-13	2013-14	2014-15
Sunday	445	578	614
Monday	520	640	738
Tuesday	503	656	701
Wednesday	485	642	739
Thursday	532	684	669
Friday	524	729	722
Saturday	507	551	683



### 3 Year Comparison of Incidents by Time of Day

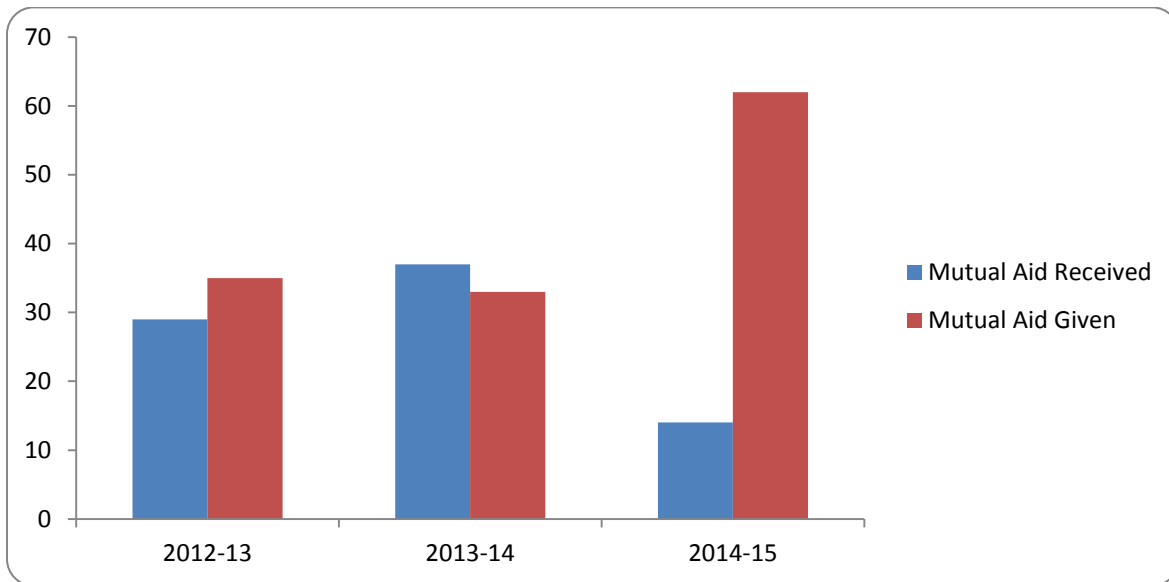
Hour	2012-13	2013-14	2014-15
0000-0059	64	109	130
0100-0159	84	100	113
0200-0259	76	75	88
0300-0359	66	93	83
0400-0459	56	80	81
0500-0559	64	93	87
0600-0659	66	109	123
0700-0759	122	168	185
0800-0859	152	199	239
0900-0959	195	215	242
1000-1059	176	271	239
1100-1159	220	262	280
1200-1259	179	276	234
1300-1359	202	248	262
1400-1459	213	261	269
1500-1559	223	267	315
1600-1659	225	262	308
1700-1759	197	253	246
1800-1859	171	225	290
1900-1959	185	232	284
2000-2059	178	210	233
2100-2159	180	191	201
2200-2259	124	152	166
2300-2359	98	129	168





### 3 Year Comparison of Mutual Aid Received

Entity Giving Aid	2012-13	2013-14	2014-15
American Red Cross	1		1
Avalon VFD		1	
Bristol VFD	1	1	
Ennis Fire Dept.	6	3	1
ESD #6	2	3	2
Ferris Fire Dept.	1		
Forreston VFD	1	2	
Midlothian Fire Dept.	7	9	3
Ovilla Fire-Rescue	1	2	
Palmer VFD	1	1	
Red Oak Fire-Rescue	8	15	7
<b>Total</b>	<b>29</b>	<b>37</b>	<b>14</b>

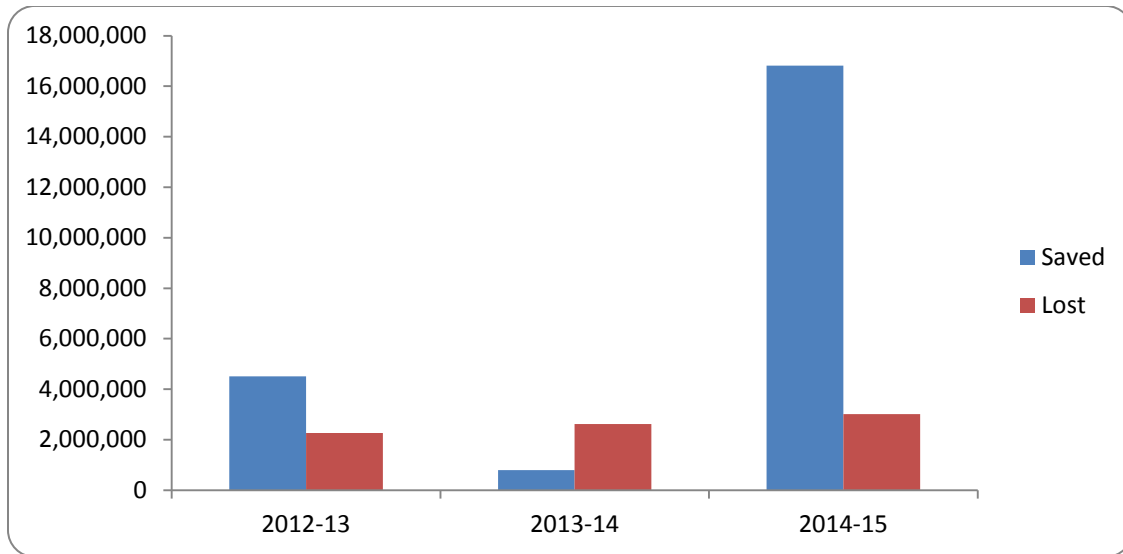


### 3 Year Comparison of Mutual Aid Given

Entity Receiving Aid	2012-13	2013-14	2014-15
Ennis Fire Dept.	3	1	3
ESD #6	12	6	22
Forreston VFD		1	2
Lancaster Fire Dept.	2	2	2
Maypearl VFD		2	1
Midlothian Fire Dept.	6	6	7
Ovilla Fire-Rescue		2	3
Palmer		1	2
Red Oak Fire-Rescue	12	12	20
<b>Total</b>	<b>35</b>	<b>33</b>	<b>62</b>

### 3 Year Comparison of Dollar Value Saved vs. Lost

Category	2012-13		2013-14		2014-15	
Total \$ Value	6,776,600		3,417,736		19,823,460	
	Dollars	%	Dollars	%	Dollars	%
Total Saved	4,509,624	66.55	797,036	23.32	16,809,610	84.8
Total Lost	2,266,976	33.45	2,620,700	76.68	3,013,850	15.2



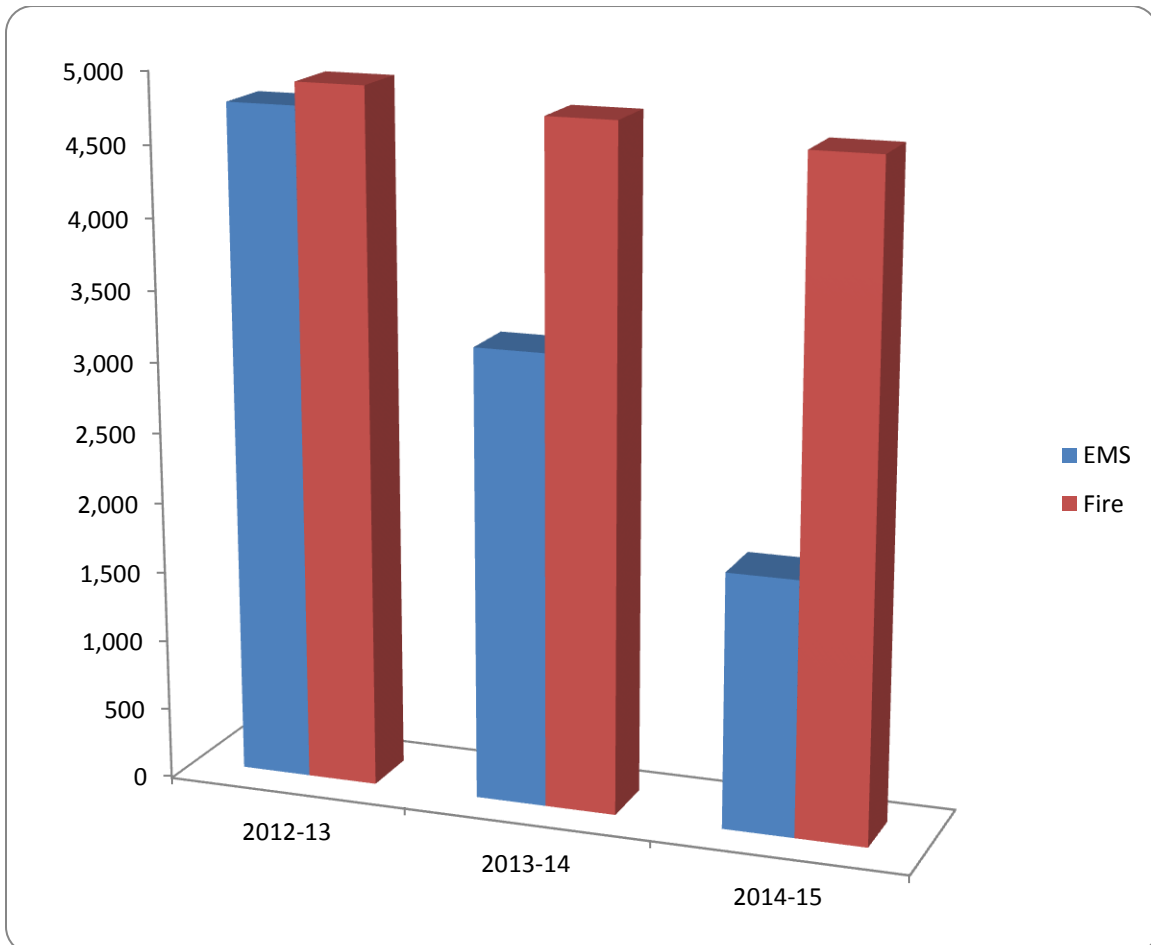
## **TRAINING**

### **3 Year Comparison of Training Hours Accomplished**

2012-13		2013-14		2014-15	
Fire	EMS	Fire	EMS	Fire	EMS
4,922	4,761	4,786.5	3,205	4,667.25	1,820

## **CERTIFICATIONS OBTAINED 2014-15**

Intermediate Firefighter – 2  
 Advanced Firefighter – 2  
 Fire Instructor I – 4  
 Fire Officer I – 11  
 Fire Inspector – 1  
 Fire Investigator – 1  
 Paramedic – 1  
 Certified Fitness Specialist – 2  
 Public Safety Diver – 1





## Midway Airport Training October 2014



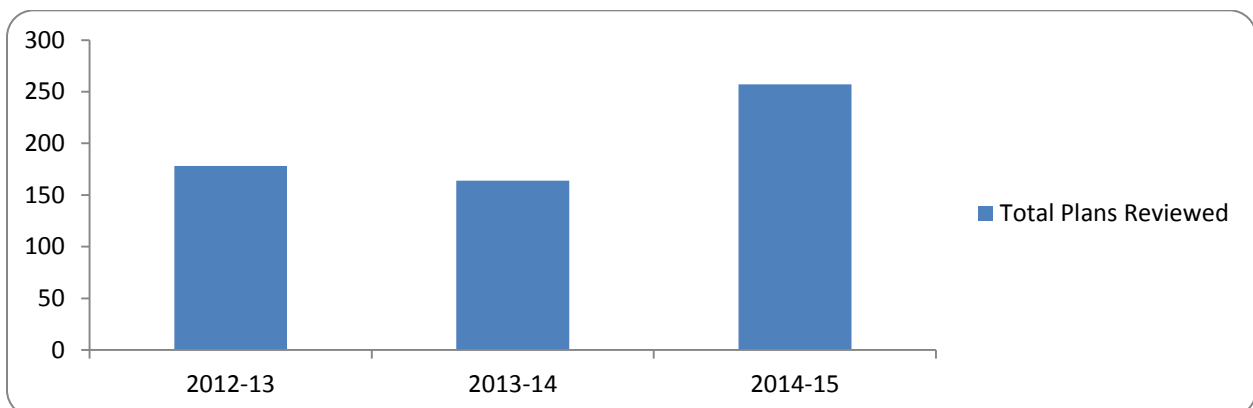
## Dive Team Training June 7, 2015

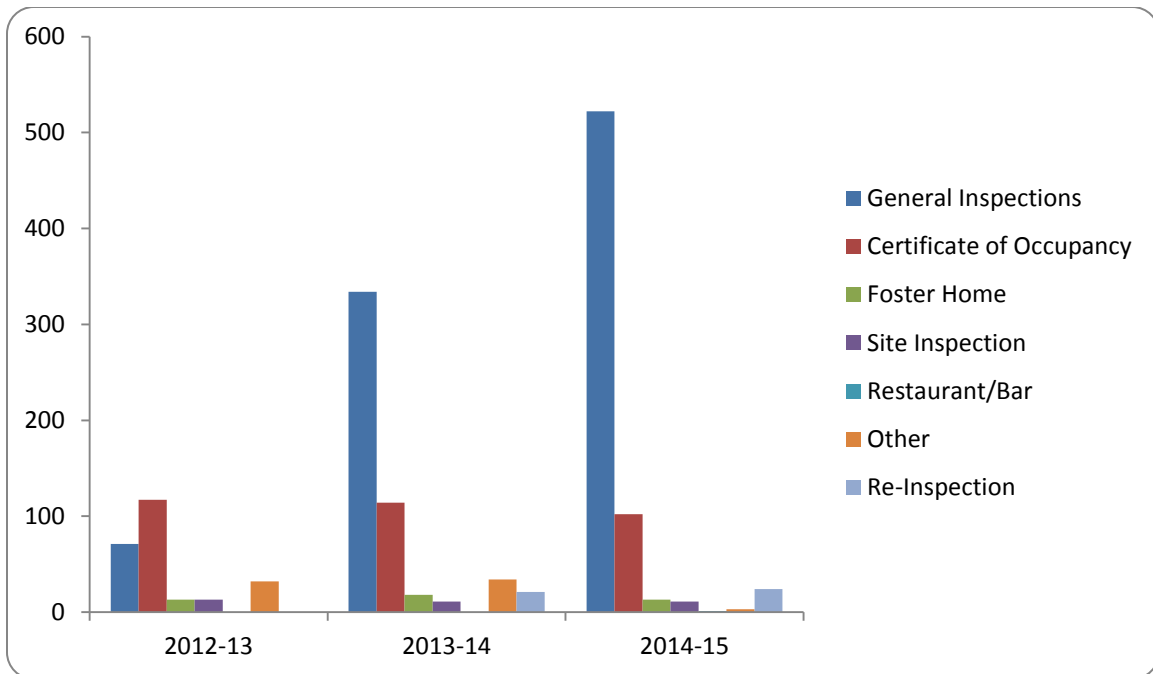


# **PREVENTION DIVISION STATISTICS**

## **3 Year Comparison of Plan Reviews**

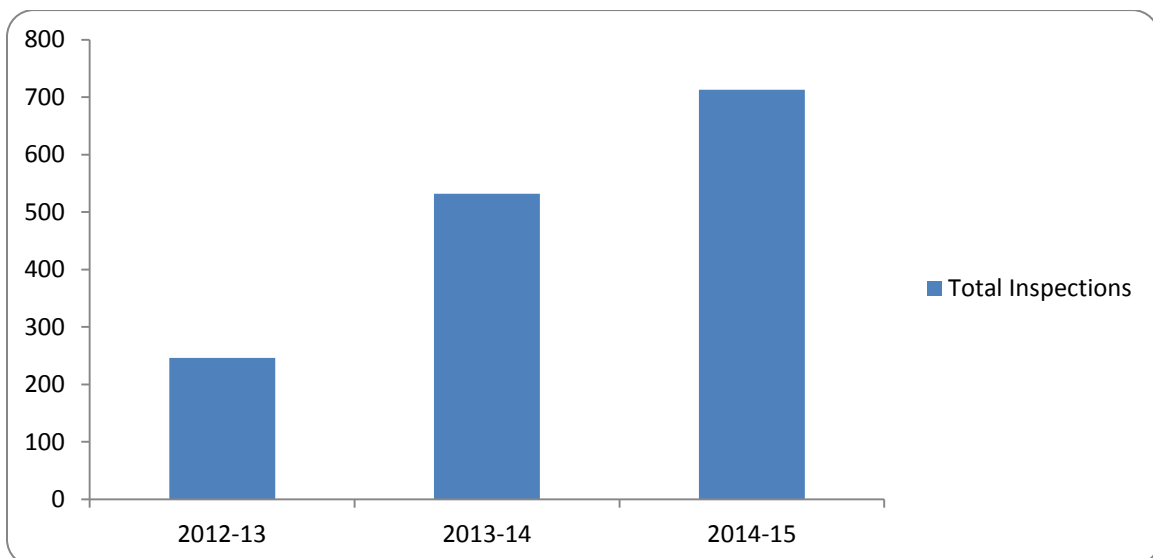
Type	2012-13	2013-14	2014-15
Construction	94	85	104
Sprinkler	26	19	33
Fire Alarm	8	11	23
Fire Suppression	3	4	7
Plats	27	27	42
Additions	19	3	20
Other	1	15	28
<b>Total</b>	<b>178</b>	<b>164</b>	<b>257</b>



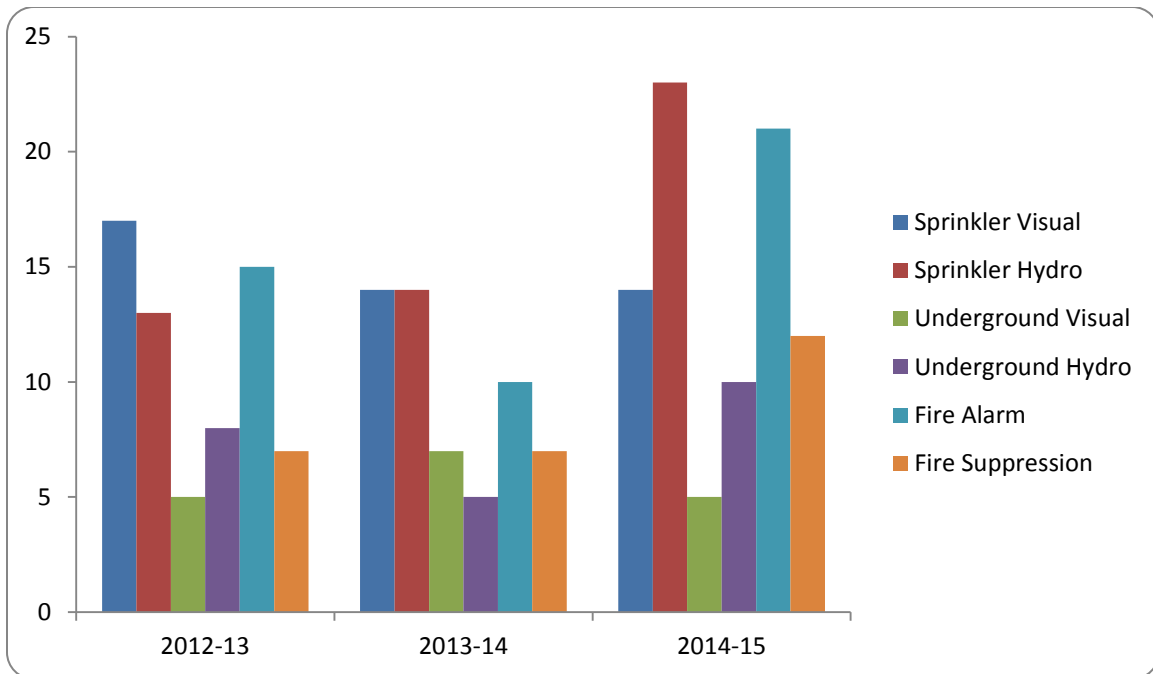


### 3 Year Comparison of Fire Inspections

Inspection Type	2012-13	2013-14	2014-15
General Inspections	71	334	522
Certificate of Occupancy	117	114	102
Foster Home	13	18	13
Site Inspection	13	11	11
Restaurant/Bar	0	0	1
Other	32	34	3
Re-Inspection	0	21	24
<b>Total</b>	<b>246</b>	<b>532</b>	<b>713</b>

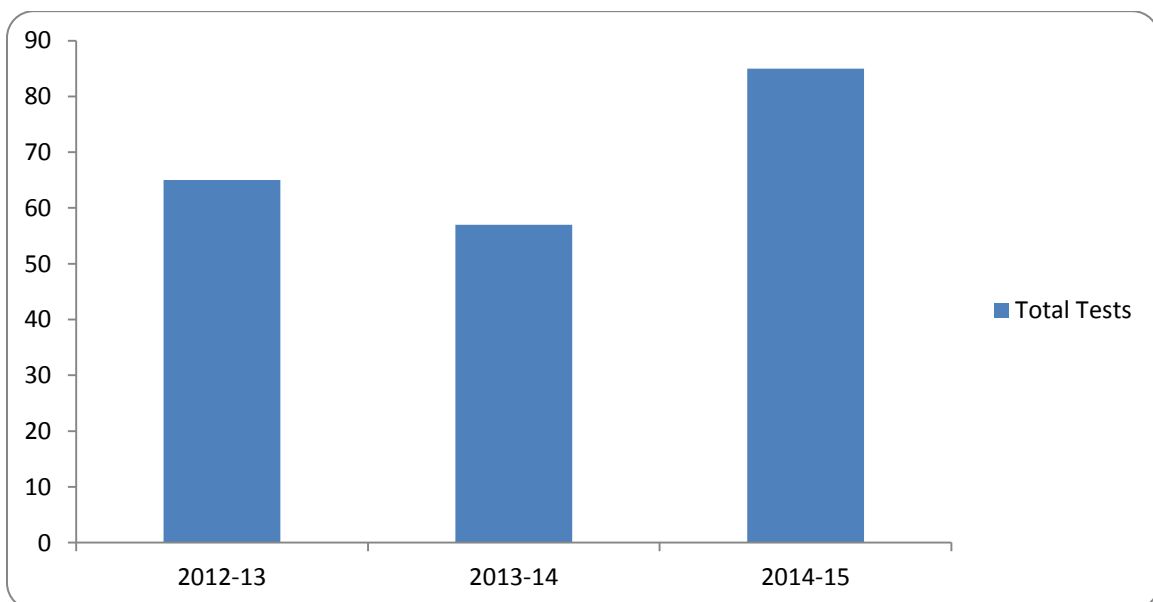






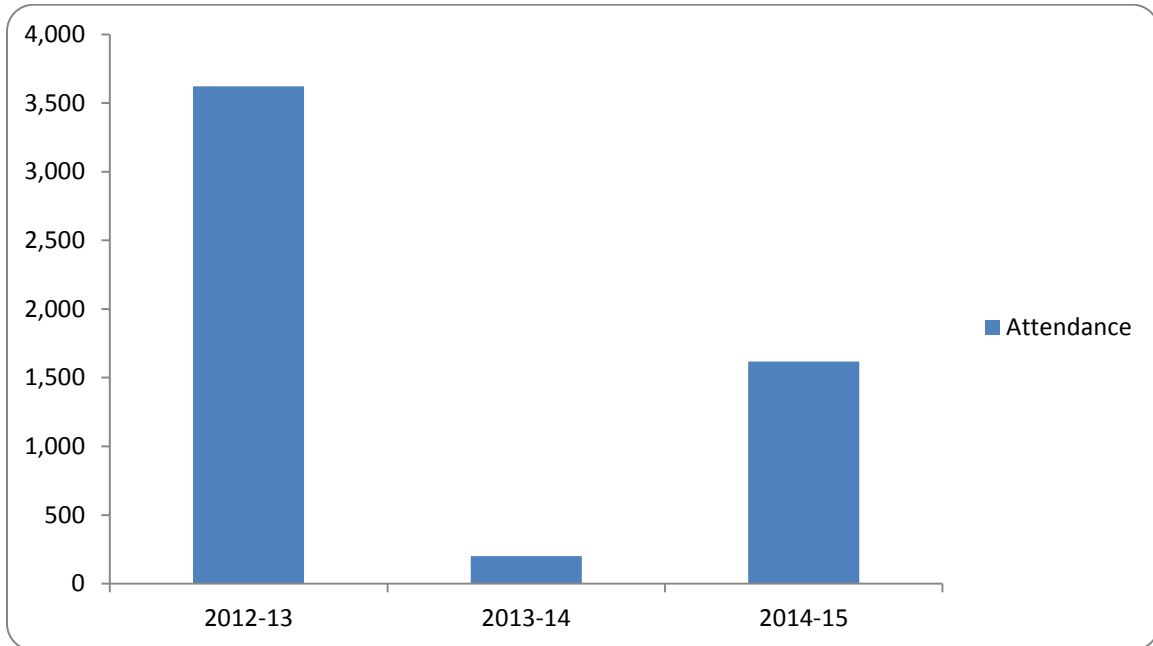
### 3 Year Comparison of Alarm & Fire Suppression Systems Tests

Test Type	2012-13	2013-14	2014-15
Sprinkler Visual	17	14	14
Sprinkler Hydro	13	14	23
Underground Visual	5	7	5
Underground Hydro	8	5	10
Fire Alarm Test	15	10	21
Fire Suppression Test	7	7	12
<b>Total</b>	<b>65</b>	<b>57</b>	<b>85</b>



## 3 Year Comparison of Public Education Presentations

2012-13		2013-14		2014-15	
Presentations	Attendance	Presentations	Attendance	Presentations	Attendance
16	3,621	9	200	7	1,617



## S.A.F.E. Team in Action October 2014



## **COMMUNITY INVOLVEMENT**

**Waxahachie 101 October 2, 2014**



### **Blazing a Trail for Literacy November 2014**

<b>Total # of Participants</b>	<b>Total Minutes Read</b>	<b># of Participating Campuses</b>	<b>Campus with Most Minutes</b>	<b># of Winning Students</b>
277	104,936	7	Dunaway	35





## Toys for Kids December 16, 2014



## Bowl for Kids Sake April 25, 2015

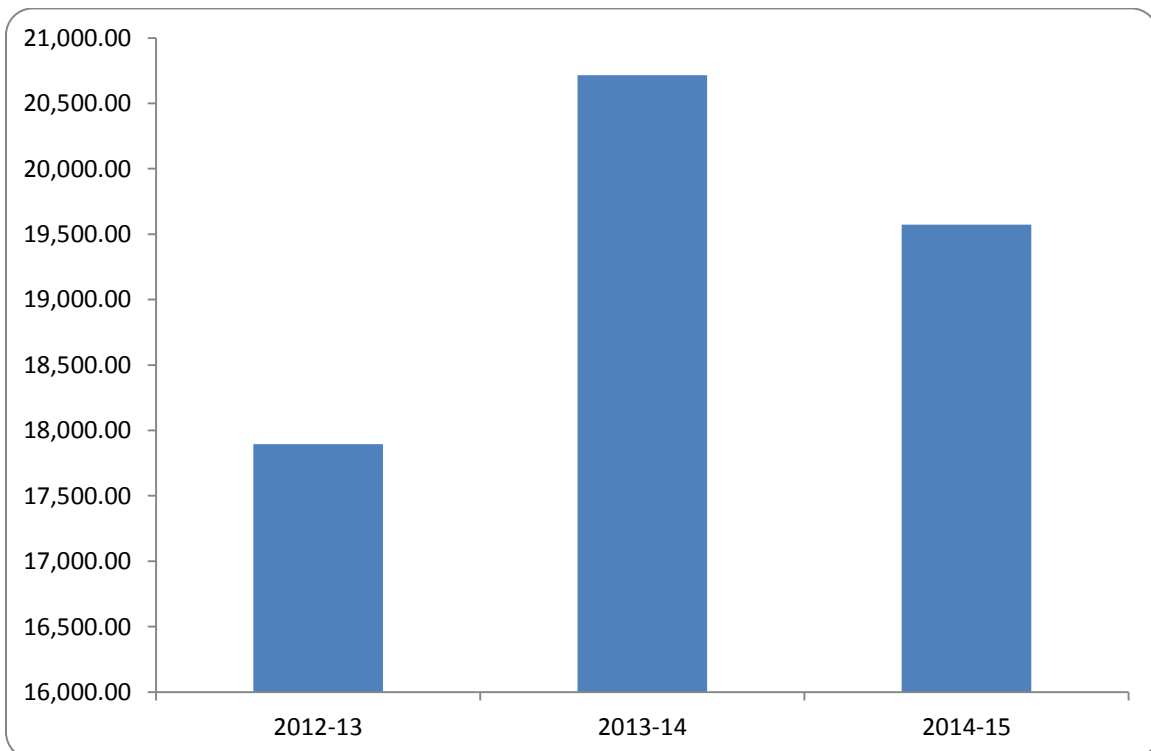


## MDA Fill the Boot May 2015



### 3 Year Comparison of MDA Collections

2012-13	2013-14	2014-15
17,895.43	20,714.82	19,573.98





## EMS Appreciation Day @ BSW Hospital 5-21-15



## HEB Burger Bash 6-13-15





## Independence Day Parade



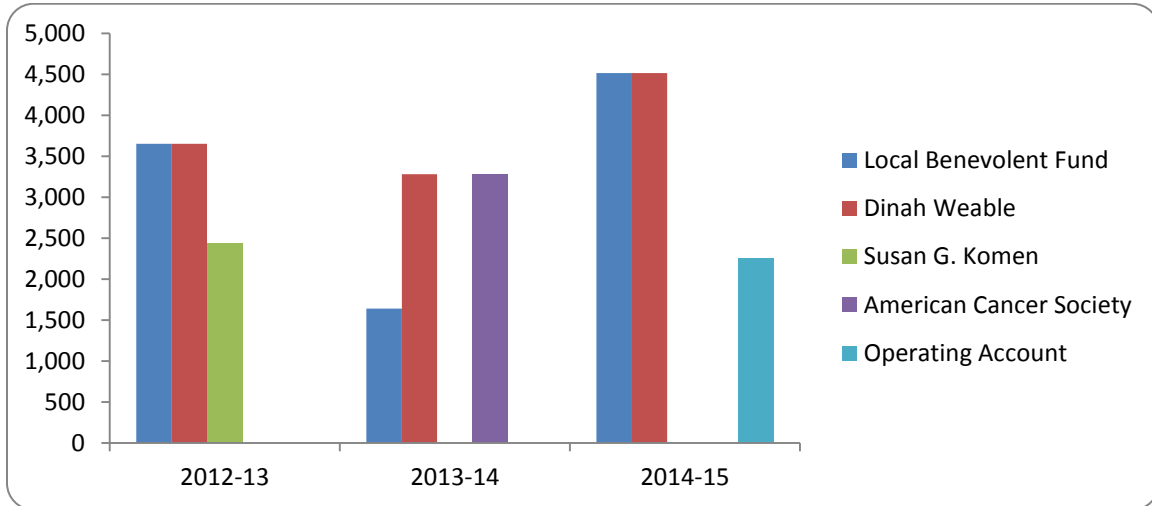
## 9/11 Memorial Stair Climb 9-5-15





### 3 Year Comparison of WFR Cares Enough to Wear Pink Campaign

Charity	2012-13	2013-14	2014-15
Local Benevolent Fund	3,650.00	1,640.28	4,515.80
Dinah Weable	3,650.00	3,280.56	4,515.80
Susan G. Komen	2,433.00	0.00	0.00
American Cancer Society	0.00	3,280.56	0.00
Operating Account	0.00	0.00	2,257.90
<b>Total</b>	<b>9,733.00</b>	<b>8,201.40</b>	<b>11,289.50</b>



**Come See Us Again...You're Always Welcome**

