



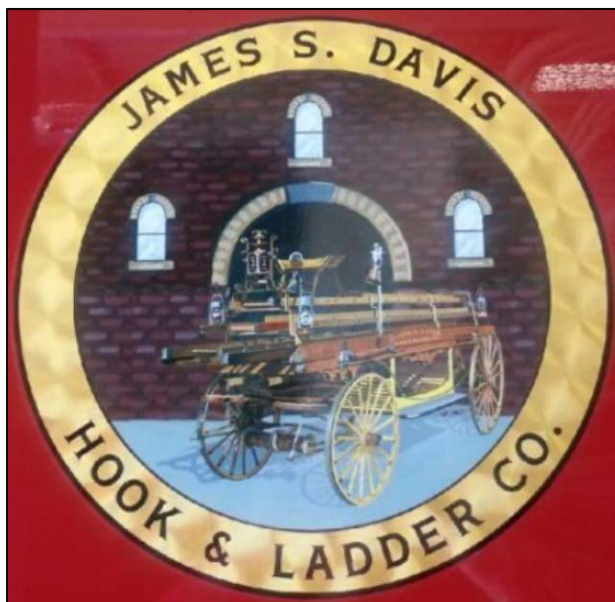
# **Waxahachie Fire-Rescue**

**Annual Report**

**Fiscal Year 2015-16**

# TABLE OF CONTENTS

Introduction.....	2
Mission, Vision and Value Statements.....	3
2015-16 Highlights.....	4-14
Organizational Chart.....	15
Authorized Personnel.....	16
Budget Information.....	17
Fire Administration.....	18
Fire Station # 1.....	19-20
Fire Station # 2.....	21-22
Fire Station # 3.....	23-24
Operations Division Statistics.....	25-32
Training Division Statistics.....	33-34
Prevention Division Statistics.....	35-38
Fire Department Projects.....	39
# Community Involvement.....	40-47



## **INTRODUCTION**

The American fire service is built upon tradition, respect, honor, and dedication to the service of others. Waxahachie Fire-Rescue has enjoyed a rich history of serving the citizens, visitors, and businesses of the City of Waxahachie since 1883. The reputation of this department is one of excellence and professionalism.

With the support of the citizens and businesses of Waxahachie, Mayor, City Council, our City Manager and his staff, as well as the other City departments and supporting governmental agencies, we continue to be an exemplary organization that prides itself on being proactive, efficient, and exceptionally effective in our delivery of services.

While we are blessed to be supplied with the very best equipment and training available, nothing can take the place of our most important asset- the men and women of this Department who dedicate their lives to serving others. And so, with this in mind, I would like to take this opportunity to thank our members for the exceptional service they provide on a daily basis as well as to their family members for sharing them with this Department and the City of Waxahachie.

In a team effort, we are committed to provide the best possible proactive approach to fire and life safety, prevention and education. We will pursue excellence in every aspect of our mission. Our goal is to continue to work together to make our city a safe and productive environment for all concerned. In doing so, every citizen can be ensured that our mission will be accomplished in a fashion which reflects this Department's dedication to outstanding customer and community service.

It is our honor and privilege to serve the 32,000 citizens of the City of Waxahachie with an ISO Class 2/10 fire department. While we strive for increased knowledge and capabilities, we must also ensure that we document our past activities and accomplishments. As such, we are proud to hereby present the 2015-16 Annual Report for Waxahachie Fire-Rescue.

*Ricky Boyd*, Fire Chief  
Waxahachie Fire-Rescue

## **MISSION STATEMENT**

To protect life and property from fire through strong prevention, public education, code enforcement and suppression programs and to establish the best rescue and pre-hospital care plan possible.

## **VISION STATEMENT**

We envision a city where citizens can live comfortably knowing their lives and property are protected by a department staffed with proficient, caring, dedicated people and where all citizens are educated about fire prevention and other public safety concerns.

## **VALUE STATEMENTS**

**Positive Attitudes-** We value a positive attitude toward the City and this department.

**Professionalism-** We value pride in our department and pride in the quality of work we are privileged to perform. Our conduct, both on and off duty, is a reflection of our professional commitment.

**Service Orientation-** We value a commitment to service. We recognize a service responsibility to other City departments and to every element of our business and neighborhood community. Our performance must ultimately be judged by the satisfaction of those we serve.

**Teamwork-** We value teamwork. No one is as effective alone as they are with the cooperative help of others. We encourage all members to work together as equal partners.

**Innovation-** We value and encourage the challenge of new ideas and technology. Therefore, we encourage resourceful self-motivation.

**Performance-** We are committed to personal and professional development. We encourage training, education, and skill development on an on-going basis. We are committed to safety and to policies that encourage the mental and physical health of our most valuable asset, our members.

**Equal Opportunity-** Waxahachie Fire-Rescue is an equal opportunity employer and strongly supports and promotes equal opportunity for every individual.



# **2015-16 HIGHLIGHTS**

- Retirements:
  - On October 13, 2015, Engineer Len Crow retired after 31 years of dedicated service
  - On October 14, 2015, Captain James Irvin retired after 30 years of dedicated service
  - On June 10, 2016, Battalion Chief Randle Muirhead retired after 38 years of dedicated service
- Promotions:
  - On October 15, 2015, Jerry Sykes was promoted to the rank of Captain
  - On October 15, 2015, Robby Muetzenberg was promoted to the rank of Lieutenant
  - On October 15, 2015, Chris Donelson was promoted to the rank of Pump Engineer
  - On October 15, 2015, Matt Rodgers was promoted to the rank of Pump Engineer
  - On July 17, 2016, Marcus Brown was promoted to the rank of Battalion Chief
  - On July 17, 2016, Brent Fuller was promoted to the rank of Captain
  - On July 17, 2016, J Martin was promoted to the rank of Lieutenant
  - On July 17, 2016, James Koonsman was promoted to the rank of Pump Engineer
- New Hires:
  - Dylan Petersen joined the WFR on October 19, 2015
  - Jonathan Laws joined the WFR on October 19, 2015
  - Jeremy Mehringer joined the WFR on October 26, 2015
  - Chris Hildreth joined the WFR on July 18, 2016
  - Heather Behringer joined the WFR as the Administrative Secretary on August 15, 2016
- Ordered a new 2016 Pierce Dash PUC Engine to replace the current Engine 3
- On January 3, 2016, AMR took over the ambulance service for the City
- 2015 Firefighter of the Year: Randall Potter
- Responded to 4,330 calls for emergency service
- Demolition and reconstruction of the burn building was completed in May 2016
- Refurbished the dive trailer

## Promotional Ceremony November 15, 2015



## 2015 Firefighter of the Year





## **Tornado December 26, 2015**



## **287 Truck Fire February 11, 2016**





## Oak Cliff Metals Fire February 14, 2016



## Concrete Truck Rollover on US287 February 27, 2016



## Plane Crash at Midway Airport April 8, 2016



## AEP Fire April 12, 2016





## Braum's Fire Investigation June 14, 2016



## Promotional Ceremony August 5, 2016





## Drowning at Lake Waxahachie August 13, 2016



## 804 Dunaway Fire September 13, 2016





## Various Major Accidents















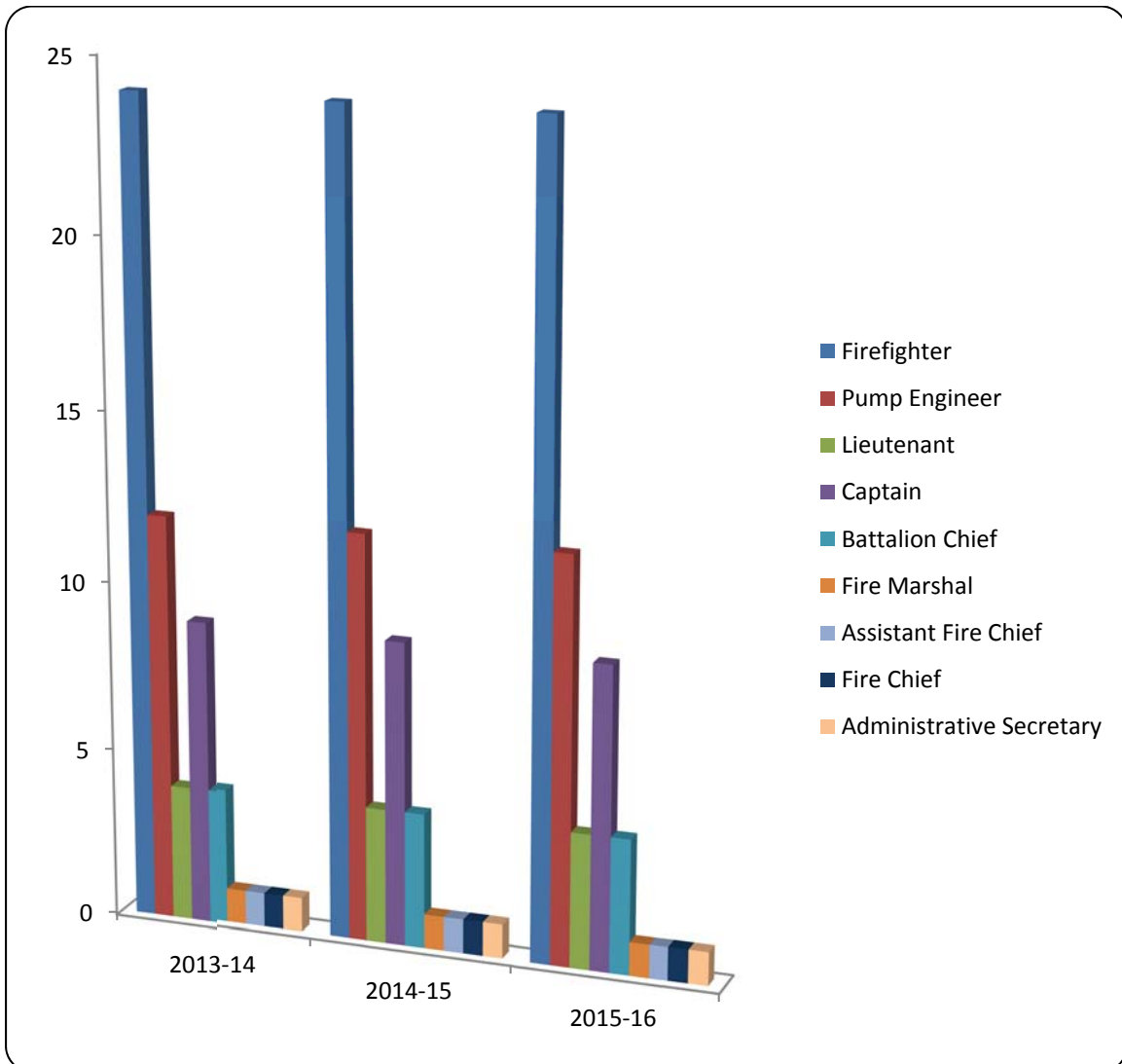
# WAXAHACHIE FIRE-RESCUE ORGANIZATIONAL CHART



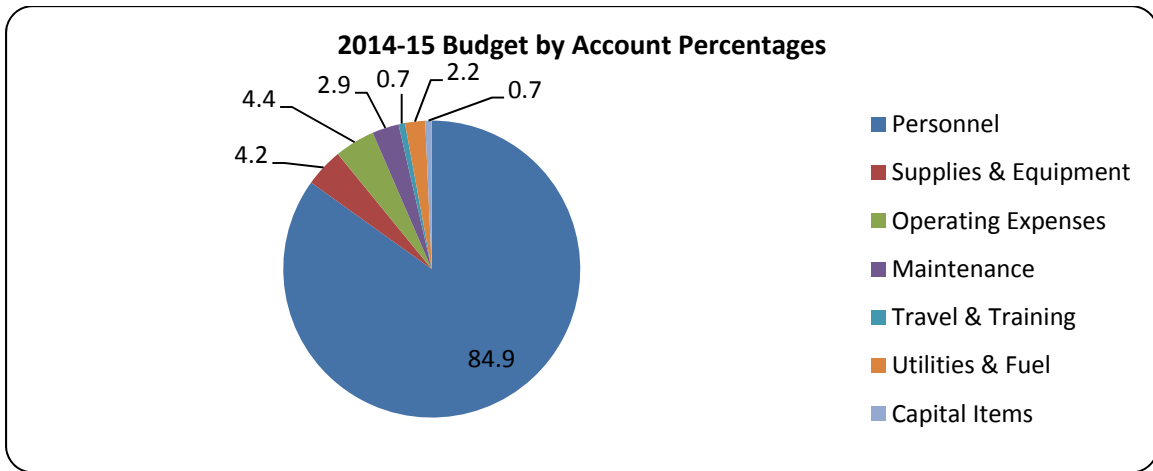


## **AUTHORIZED PERSONNEL**

Position	2013-14	2014-15	2015-16
Fire Chief	1	1	1
Assistant Fire Chief	1	1	1
Fire Marshal	1	1	1
Battalion Chief	4	4	4
Captain	9	9	9
Lieutenant	4	4	4
Pump Engineer	12	12	12
Firefighter	24	24	24
Administrative Secretary	1	1	1
<b>Total</b>	<b>57</b>	<b>57</b>	<b>57</b>

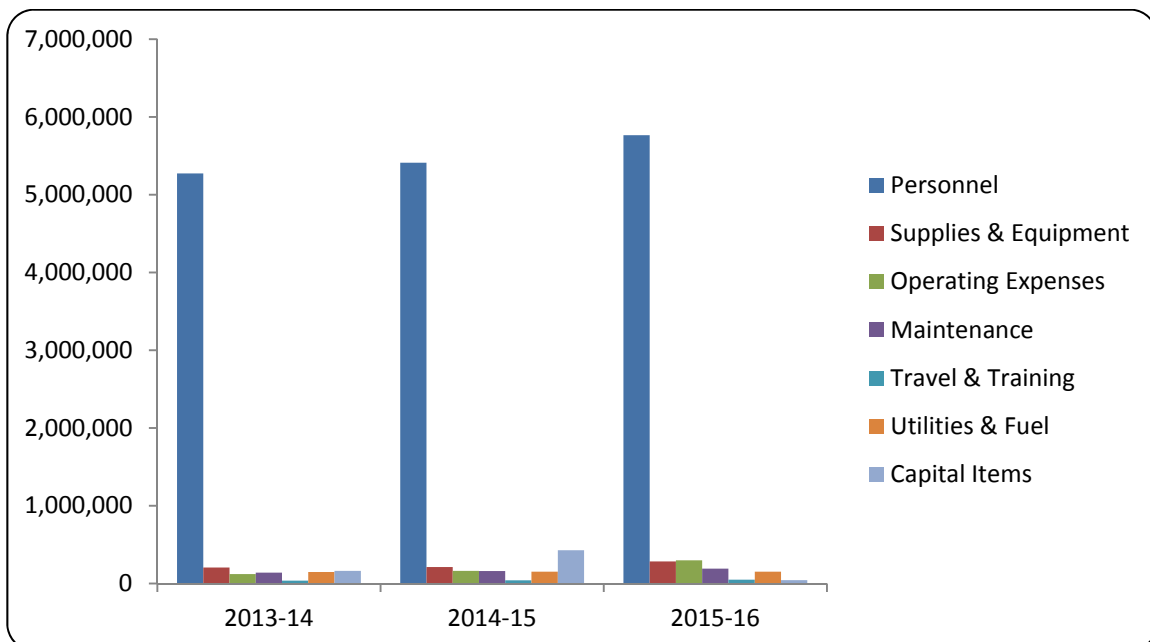


## **BUDGET INFORMATION**



### **3 Year Comparison of the WFR Budget by Account Type**

Budget Category	2013-14		2014-15		2015-16	
	Dollars	%	Dollars	%	Dollars	%
<b>Personnel</b>	5,274,829	86.6	5,411,920	82.3	5,764,920	84.9
<b>Supplies &amp; Equipment</b>	206,445	3.4	213,500	3.3	285,250	4.2
<b>Operating Expenses</b>	121,526	2.0	164,100	2.5	298,375	4.4
<b>Maintenance</b>	140,759	2.3	160,500	2.4	193,000	2.9
<b>Travel &amp; Training</b>	37,806	0.6	43,000	0.7	49,500	0.7
<b>Utilities &amp; Fuel</b>	148,241	2.4	153,560	2.3	152,400	2.2
<b>Capital Items</b>	163,800	2.7	428,250	6.5	45,000	0.7
<b>Total</b>	6,093,406		6,574,830		6,788,445	



# **FIRE ADMINISTRATION**



## **Address**

407 Water Street

## **Year Opened**

1985

## **Apparatus Assigned**

800: 2015 Chevy Tahoe  
801: 2010 Ford Explorer  
802: 2012 Chevy Tahoe  
803: 2014 Chevy Tahoe  
804: 2010 Ford Explorer  
805: 2008 Ford Explorer

## **Personnel Assigned**

Ricky Boyd, Fire Chief  
Dennis Crecelius, Fire Marshal  
Randall Potter, Assistant Fire Chief  
Gary Myers, Battalion Chief  
Matt Dorsey, Lieutenant  
Cindy Rayford, Administrative Assistant

# **FIRE STATION # 1**



## **Address**

408 W. Main Street

## **Year Opened**

1963

## **Apparatus**

Engine 1: 2007 Pierce Arrow XT

XE-1: 1994 Pierce Saber

Booster 1: 2012 F-550

Off-Road 1: 2005 Cub Cadet

## **Minimum Staffing**

3





### Personnel Assigned

Position	A-Shift	B-Shift	C-Shift
<b>Captain</b>	Sykes	Maeker	Griffin
<b>Engineer</b>	Vest	Koonsman	Donelson
<b>Firefighter</b>	Mehringer	Driskell	Duwe
<b>Firefighter</b>	Hildreth	Laws	Petersen

## **FIRE STATION # 2**



### **Address**

1601 Cleaver Street

### **Year Opened**

2012

### **Apparatus**

Engine 2: 2011 Pierce Arrow XT  
Battalion 1: 2014 Ford F-350  
XE-2: 2000 Pierce Dash  
XT-2: 1997 Pierce Arrow 105' Quint  
Squad 2: 2004 Ford F-250  
Boat 2: 1995 Rescue 1 Connector Boat  
Dive Team Trailer  
Clown Program Trailer

### **Minimum Staffing**

4





### Personnel Assigned

Position	A-Shift	B-Shift	C-Shift
Battalion Chief	Brown	Rodgers	Alexander
Captain	Marrs	Fuller	Birdwell
Engineer	Townley	Rodgers	Safford
Firefighter	Seaberry	Morrill	Eubanks
Firefighter	Altom	Young	Konick

## **FIRE STATION # 3**



### **Address**

200 YMCA Drive

### **Year Opened**

1986

### **Apparatus**

Engine 3: 2005 Pierce Arrow XT  
Truck 3: 2014 Pierce 105' Dash CF Aerial  
Booster 3: 2007 F-450

### **Minimum Staffing**

6



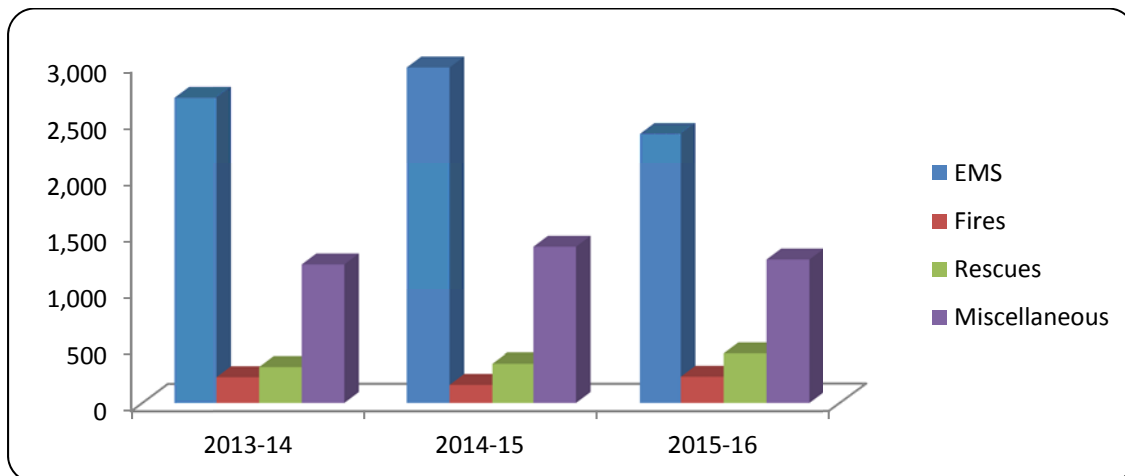
### Personnel Assigned

Position	A-Shift	B-Shift	C-Shift
<b>Captain</b>	Banks	Wilson	Anderson
<b>Lieutenant</b>	Martin	Moon	Muetzenberg
<b>Engineer</b>	Burnette	Hernandez	Crews
<b>Engineer</b>	Sodek	Petty	Dawson
<b>Firefighter</b>	Nava	Lucky	Wilemon
<b>Firefighter</b>	Douglas	Potter	Miller
<b>Firefighter</b>	Lindsey	Emerson	Wilkes
<b>Firefighter</b>	Lynn	Wade	Richardson

# **OPERATIONS DIVISION STATISTICS**

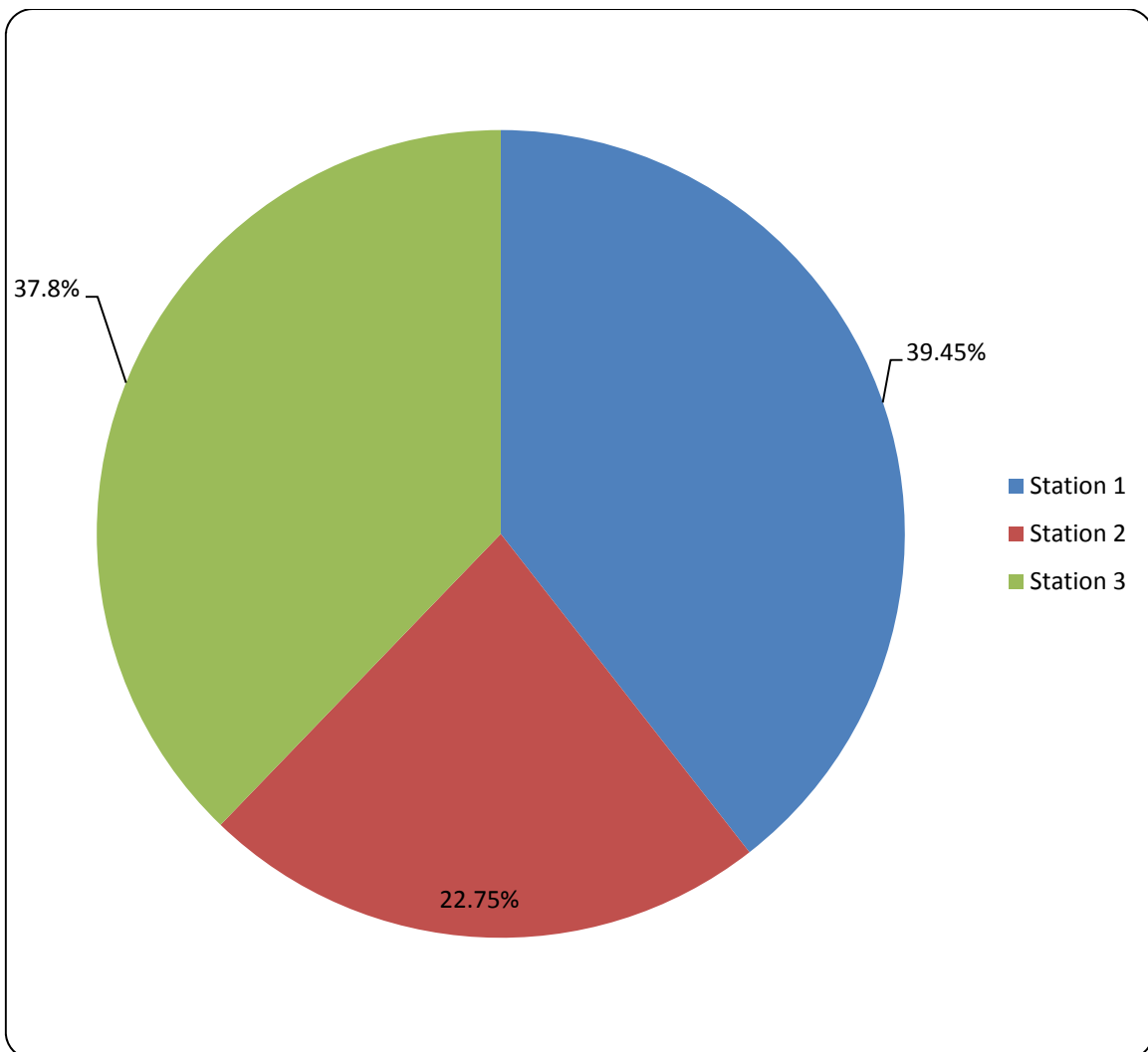
## **3 Year Comparison of Incidents by Type**

Type of Incident	2013-14	2014-15	2015-16
EMS, Med. Trauma Other Than Auto Acc.	462	457	341
EMS, Medical Other Than Trauma	2,242	2,515	2,048
<b>Total EMS</b>	<b>2,704 (60.36%)</b>	<b>2,972 (61.08%)</b>	<b>2,389 (55.16%)</b>
Fire, Commercial Structure	19	18	19
Fire, Residential Structure	60	37	49
Fire, Institution Structure	1	2	2
Fire, Other Structures	14	11	15
Fire, Motor Vehicle	33	20	39
Fire, Grass & Refuse	67	42	70
Fire, Control Burn	34	30	38
<b>Total Fires</b>	<b>228 (5.09%)</b>	<b>160 (3.29%)</b>	<b>232 (5.32%)</b>
Rescue, Auto Acc. With Injury	163	170	230
Rescue, Auto Acc. Without Injury	145	153	181
Rescue, Non-Auto Acc. With Injury	3	4	7
Rescue, Non-Auto Acc. Without Injury	7	20	17
<b>Total Rescues</b>	<b>318 (7.10%)</b>	<b>347 (7.13%)</b>	<b>435 (10.04%)</b>
Misc., Assist the Public	468	517	493
Misc., Assist Other Agencies	87	120	82
Misc., False Call	422	500	500
Misc., Power Lines, Gas Leak	143	135	130
Misc., Other	110	115	69
Not Reported	0	0	0
<b>Total Miscellaneous</b>	<b>1,230 (27.45%)</b>	<b>1,387 (28.50%)</b>	<b>1,274 (29.40%)</b>
<b>Total All Incidents</b>	<b>4,480</b>	<b>4,866</b>	<b>4,330</b>



## 2015-16 Total Incidents by Station and Month

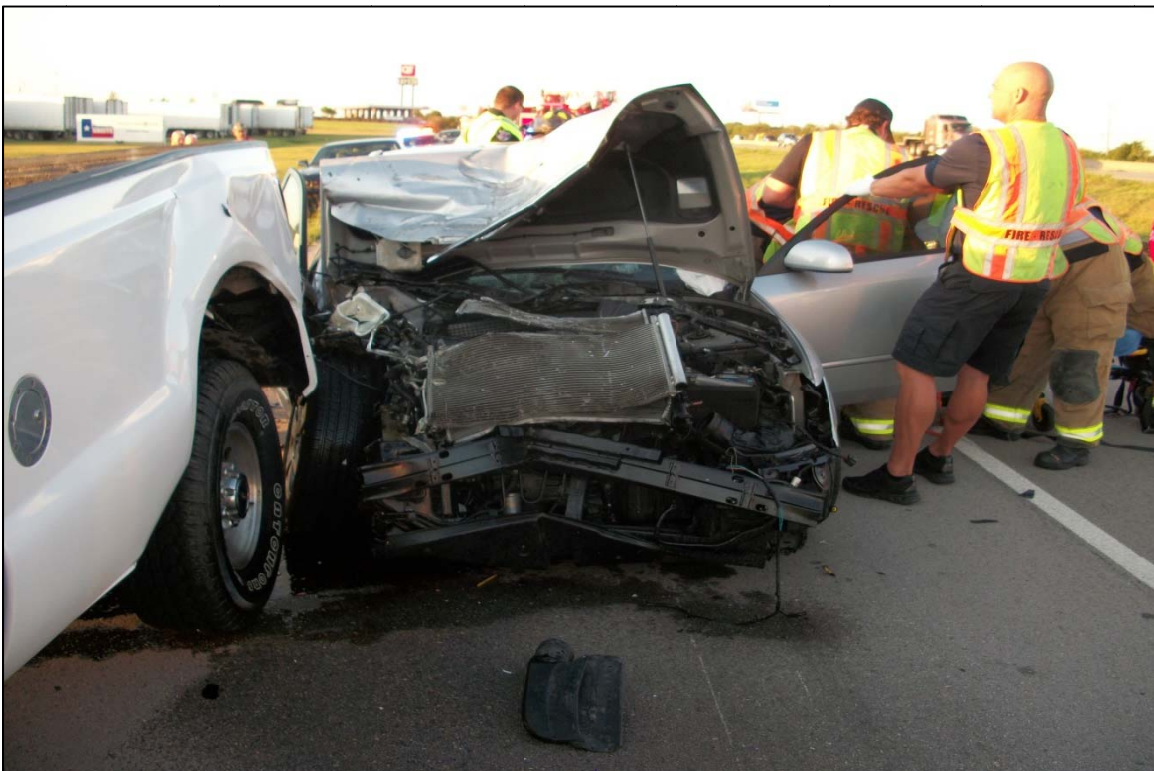
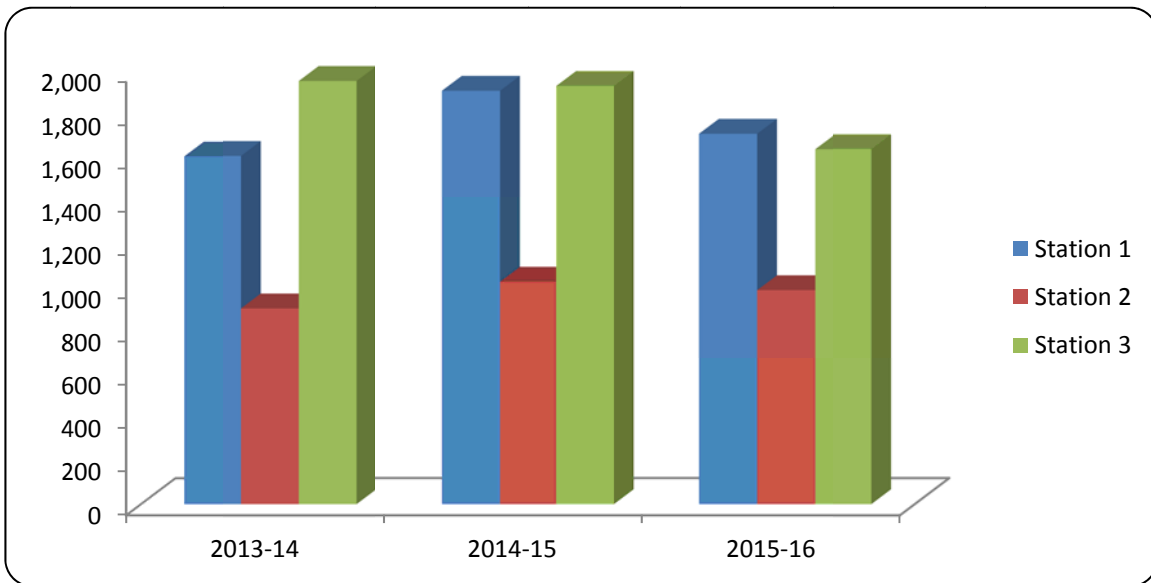
Month	Station 1	Station 2	Station 3	Monthly Total
October	182	106	170	458
November	163	85	135	383
December	168	105	149	423
January	158	62	114	334
February	113	68	119	300
March	118	86	118	322
April	134	70	120	324
May	122	88	130	340
June	149	75	154	378
July	126	70	136	332
August	137	85	148	370
September	138	85	144	366
Station Total	1,708	985	1,637	4,330





### 3 Year Comparison of Total Incidents per Station

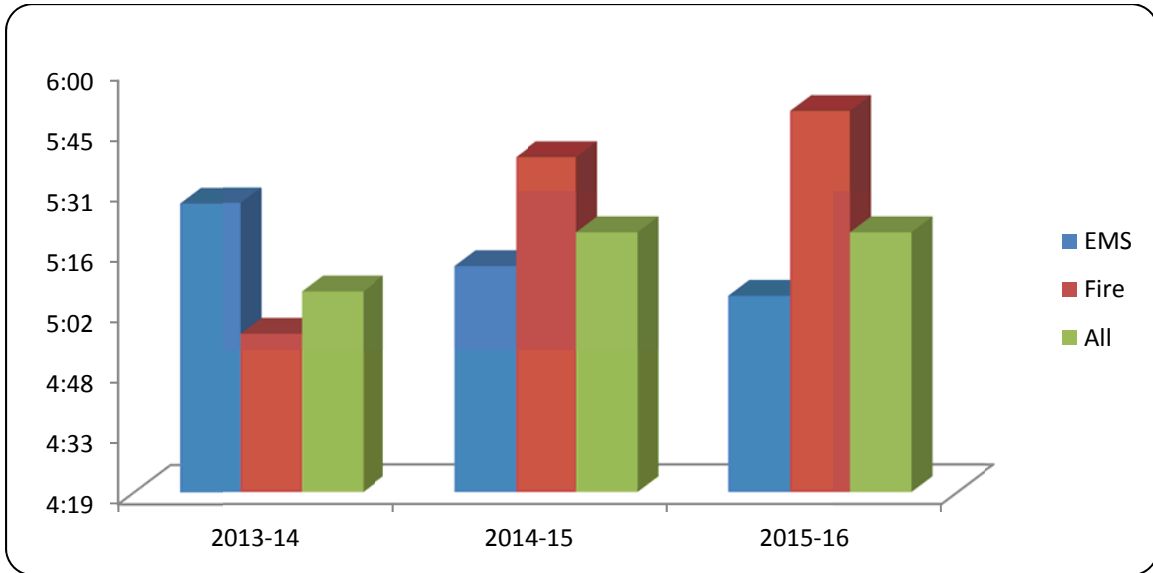
Station	2013-14	2014-15	2015-16
Station 1	1,606	1,906	1,708
Station 2	901	1,024	985
Station 3	1,951	1,928	1,637
<b>Total Incidents</b>	<b>4,480</b>	<b>4,866</b>	<b>4,330</b>





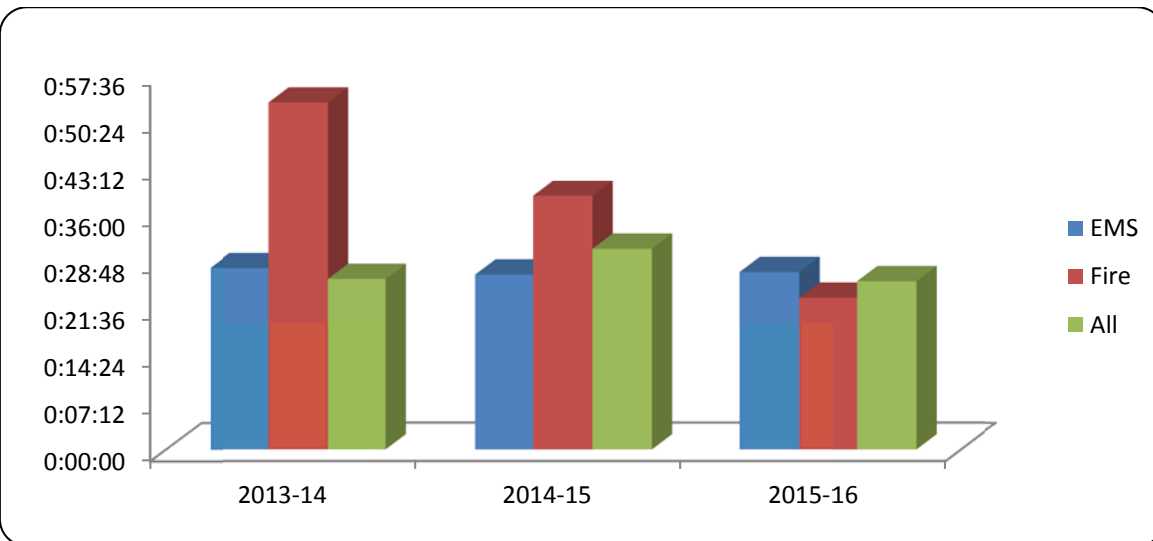
### 3 Year Comparison of Average Response Times

Incident Type	2013-14	2014-15	2015-16
EMS	5:28	5:13	5:06
Fire	4:57	5:39	5:50
All	5:07	5:21	5:21



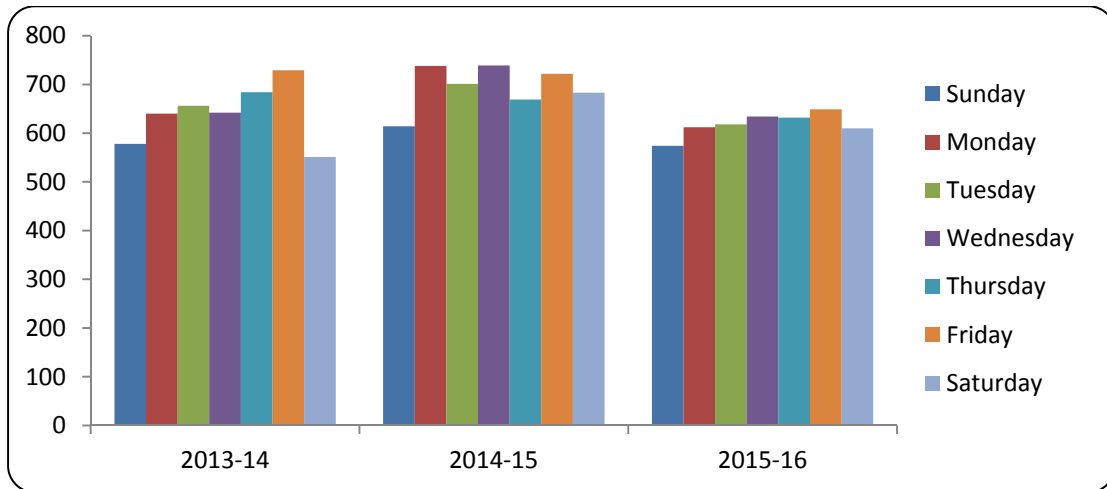
### 3 Year Comparison of Average Time on Scene

Incident Type	2013-14	2014-15	2015-16
EMS	27:49	26:50	27:13
Fire	53:20	38:53	23:17
All	26:10	30:47	25:49



### 3 Year Comparison of Total Incidents by Day of the Week

Day	2013-14	2014-15	2015-16
Sunday	578	614	574
Monday	640	738	612
Tuesday	656	701	618
Wednesday	642	739	634
Thursday	684	669	632
Friday	729	722	649
Saturday	551	683	610



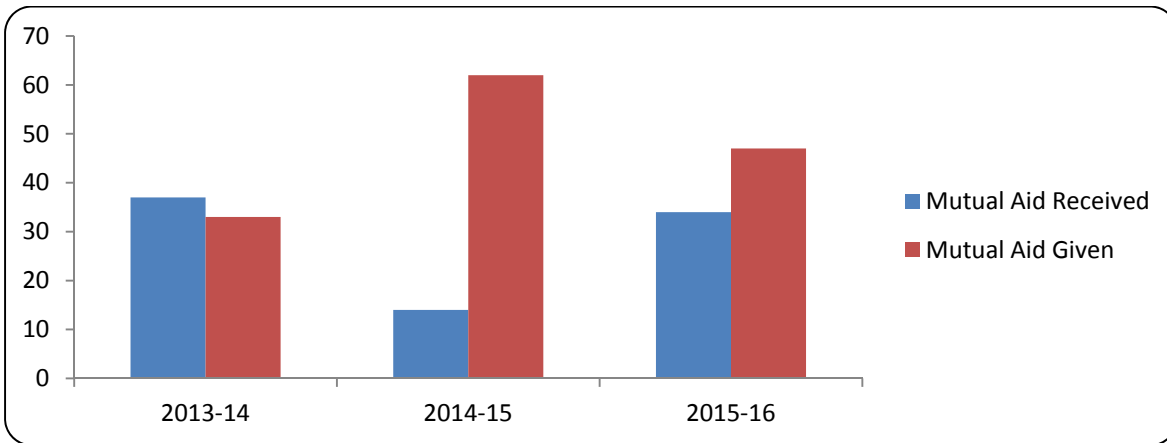
### 3 Year Comparison of Incidents by Time of Day

Hour	2013-14	2014-15	2015-16
0000-0059	109	130	110
0100-0159	100	113	91
0200-0259	75	88	84
0300-0359	93	83	72
0400-0459	80	81	77
0500-0559	93	87	83
0600-0659	109	123	110
0700-0759	168	185	151
0800-0859	199	239	195
0900-0959	215	242	202
1000-1059	271	239	247
1100-1159	262	280	266
1200-1259	276	234	259
1300-1359	248	262	279
1400-1459	261	269	231
1500-1559	267	315	228
1600-1659	262	308	262
1700-1759	253	246	235
1800-1859	225	290	253
1900-1959	232	284	234
2000-2059	210	233	202
2100-2159	191	201	172
2200-2259	152	166	150
2300-2359	129	168	136



### 3 Year Comparison of Mutual Aid Received

Entity Giving Aid	2013-14	2014-15	2015-16
American Red Cross		1	1
Avalon VFD	1		
Bristol VFD	1		1
Cedar Hill Fire Dept.			1
ESD #6	3	2	3
Ferris Fire Dept.			
Forreston VFD	2		2
Maypearl VFD			1
Ovilla Fire-Rescue	2		4
Palmer VFD	1		2
Red Oak Fire-Rescue	15	7	10
<b>Total</b>	<b>37</b>	<b>14</b>	<b>34</b>



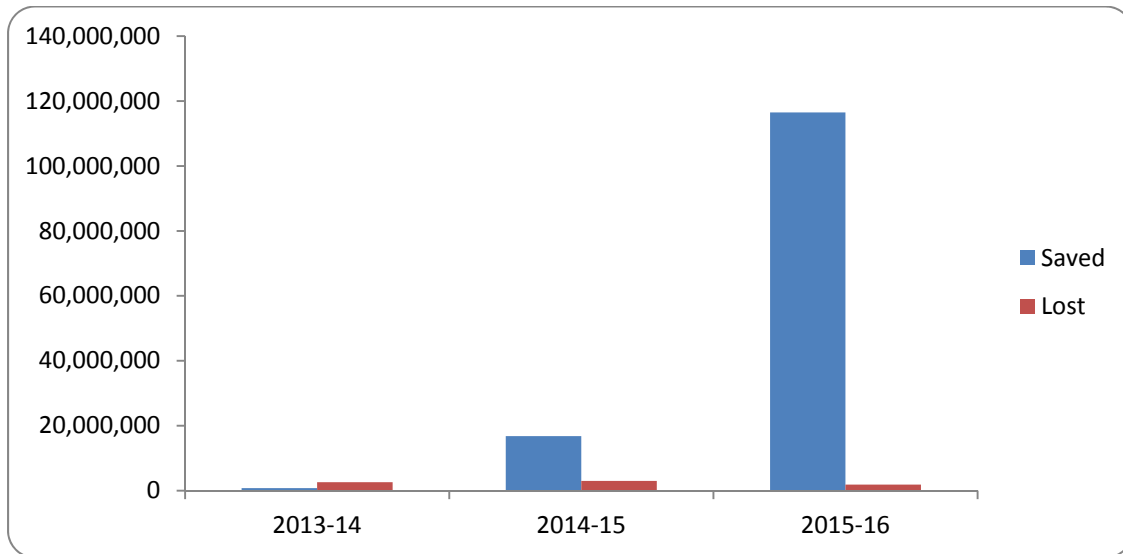
### 3 Year Comparison of Mutual Aid Given

Entity Receiving Aid	2013-14	2014-15	2015-16
Careflite			2
East Texas Ambulance			1
Ennis Fire Dept.	1	3	2
ESD #6	6	22	9
Forreston VFD	1	2	2
Lancaster Fire Dept.	2	2	
Maypearl VFD	2	1	1
Midlothian Fire Dept.	6	7	11
Ovilla Fire-Rescue	2	3	2
Palmer	1	2	
Red Oak Fire-Rescue	12	20	17
<b>Total</b>	<b>33</b>	<b>62</b>	<b>47</b>



### 3 Year Comparison of Dollar Value Saved vs. Lost

Category	2013-14		2014-15		2015-16	
<b>Total \$ Value</b>	3,417,736		19,823,460		52,504,310	
	<b>Dollars</b>	<b>%</b>	<b>Dollars</b>	<b>%</b>	<b>Dollars</b>	<b>%</b>
<b>Total Saved</b>	797,036	23.32	16,809,610	84.8	50,306,530	95.81
<b>Total Lost</b>	2,620,700	76.68	3,013,850	15.2	2,197,780	4.19



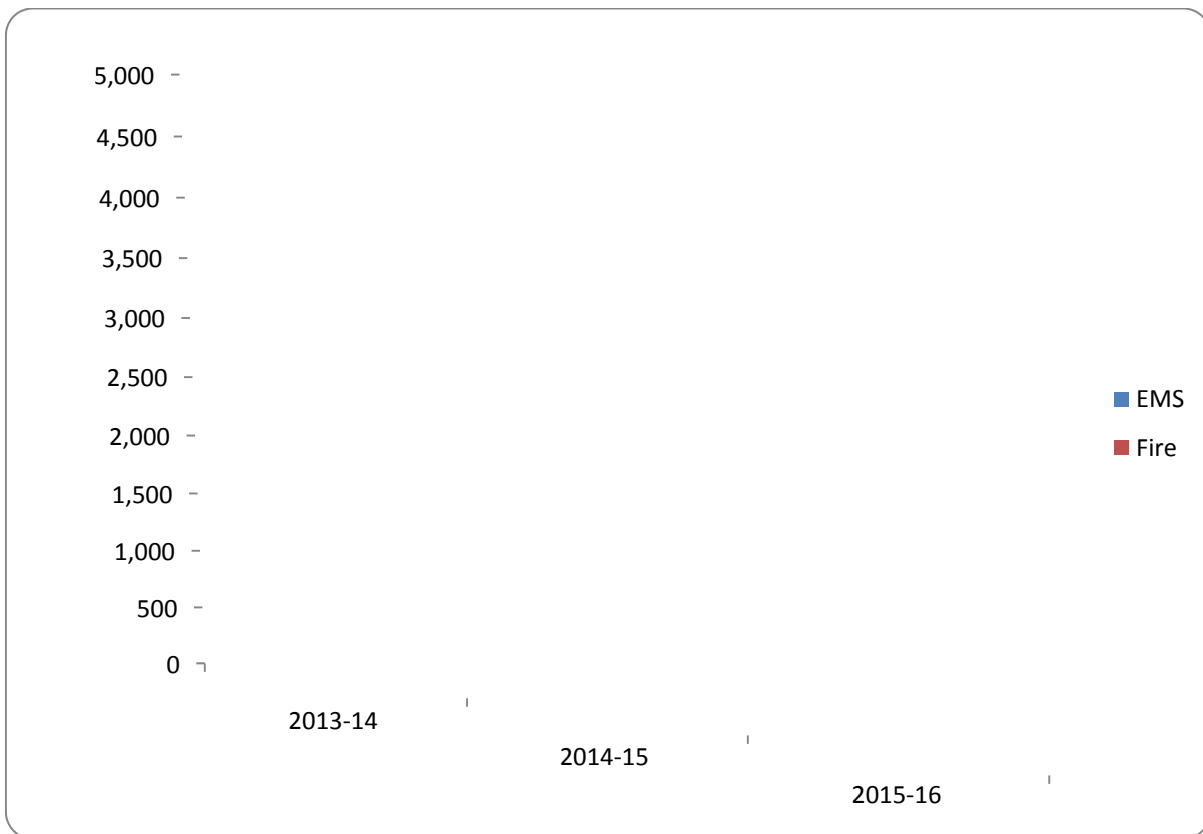
# TRAINING

## 3 Year Comparison of Training Hours Accomplished

2013-14		2014-15		2015-16	
Fire	EMS	Fire	EMS	Fire	EMS
4,786.5	3,205	4,667.25	1,820	2,667.50	1,796

## CERTIFICATIONS OBTAINED 2015-16

Intermediate Firefighter – 2  
 Master Firefighter – 1  
 Incident Safety Officer – 4  
 Advanced Firefighter – 1  
 Master Inspector – 1  
 Fire Investigator – 1  
 Rescue Diver- 1  
 Master Diver-17  
 Driver/operator- pumper – 5



## Dive Team Training September 22, 2016

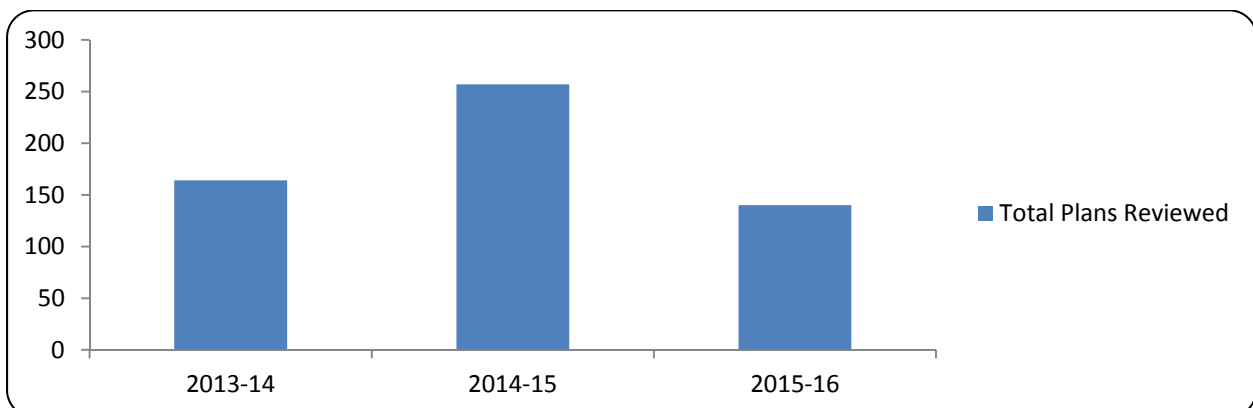


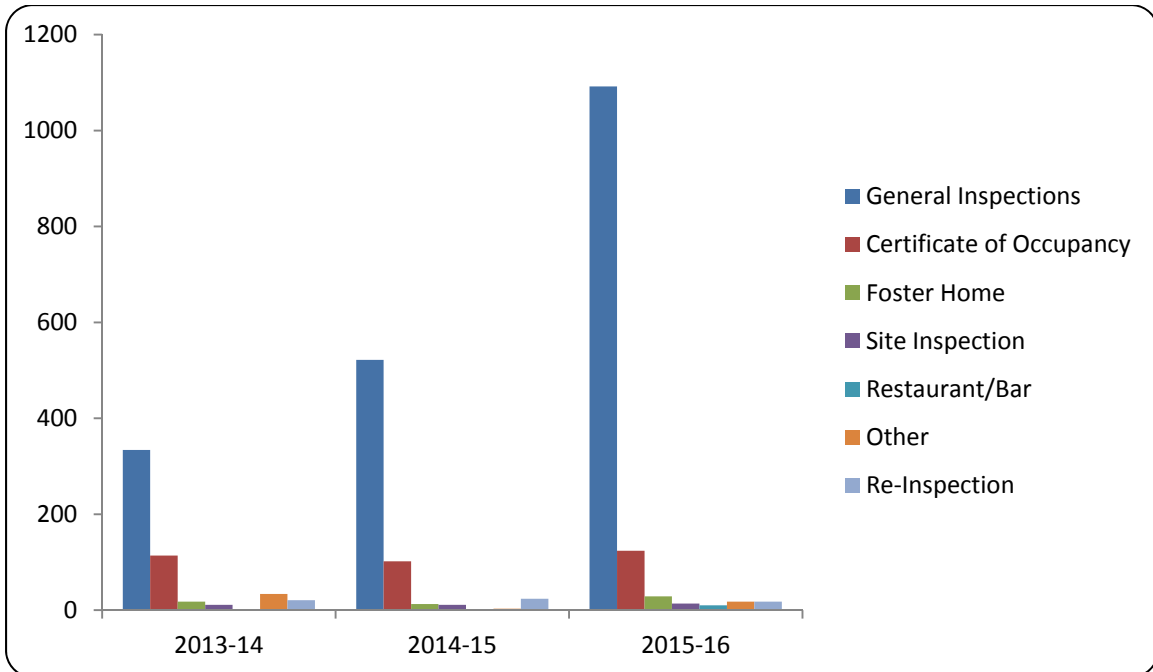


# **PREVENTION DIVISION STATISTICS**

## **3 Year Comparison of Plan Reviews**

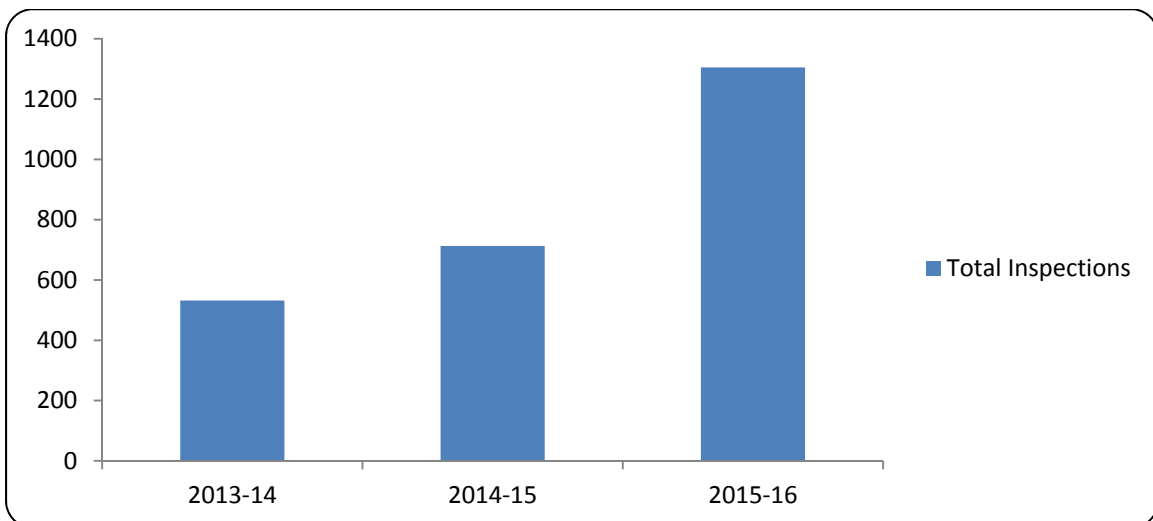
Type	2013-14	2014-15	2015-16
Construction	85	104	54
Sprinkler	19	33	24
Fire Alarm	11	23	30
Fire Suppression	4	7	9
Plats	27	42	10
Additions	3	20	1
Other	15	28	12
<b>Total</b>	<b>164</b>	<b>257</b>	<b>140</b>

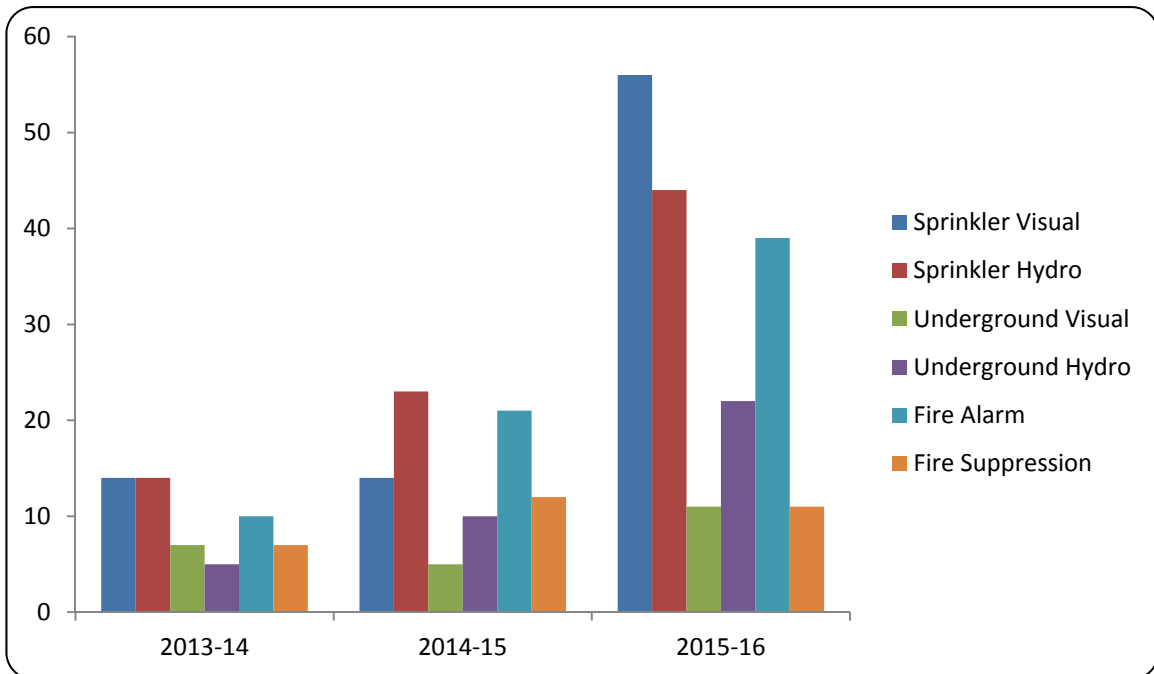




### 3 Year Comparison of Fire Inspections

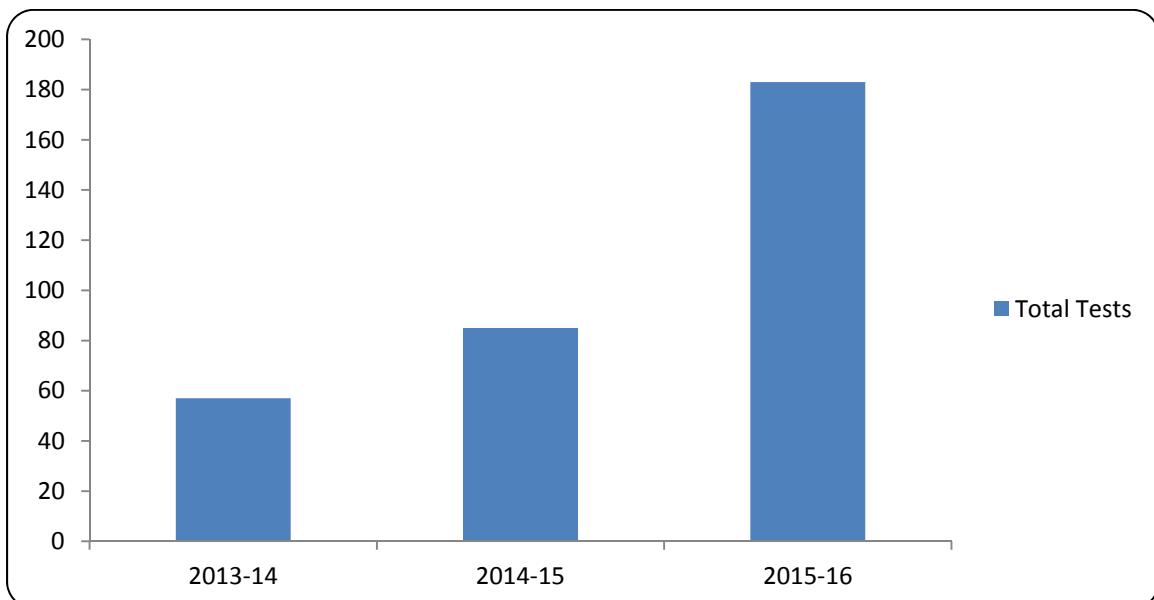
Inspection Type	2013-14	2014-15	2015-16
General Inspections	334	522	1,092
Certificate of Occupancy	114	102	124
Foster Home	18	13	29
Site Inspection	11	11	14
Restaurant/Bar	0	1	10
Other	34	3	18
Re-Inspection	21	24	18
<b>Total</b>	<b>532</b>	<b>713</b>	<b>1,305</b>





### 3 Year Comparison of Alarm & Fire Suppression Systems Tests

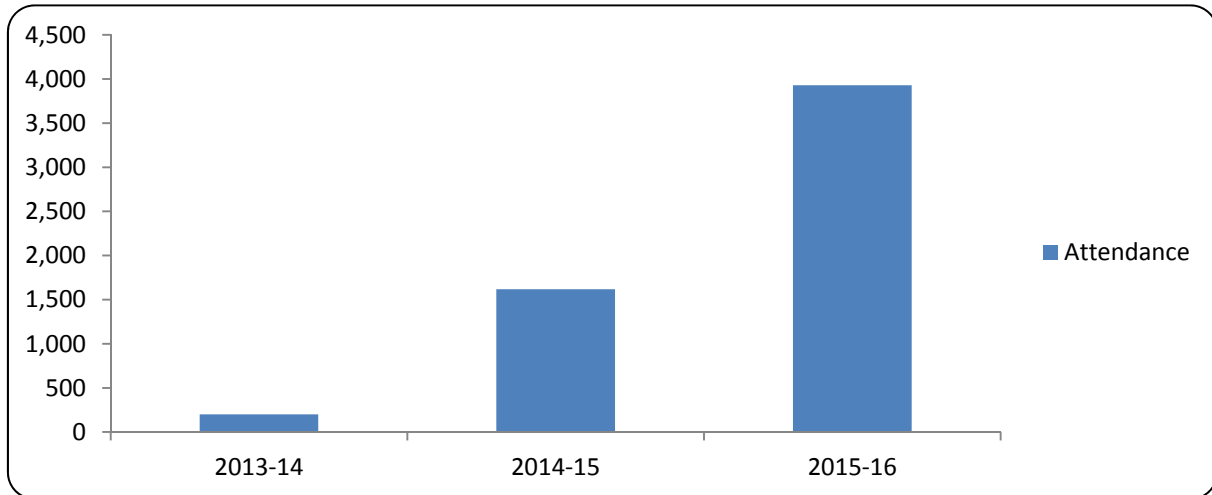
Test Type	2013-14	2014-15	2015-16
Sprinkler Visual	14	14	56
Sprinkler Hydro	14	23	44
Underground Visual	7	5	11
Underground Hydro	5	10	22
Fire Alarm Test	10	21	39
Fire Suppression Test	7	12	11
<b>Total</b>	<b>57</b>	<b>85</b>	<b>183</b>





## 3 Year Comparison of Public Education Presentations

2013-14		2014-15		2015-16	
Presentations	Attendance	Presentations	Attendance	Presentations	Attendance
9	200	7	1,617	19	3,929



# **FIRE DEPARTMENT PROJECTS**

## **Dive Trailer Refurbishment**



## **Station 3 Remodel**



## **Burn Building Rebuild**





## **COMMUNITY INVOLVEMENT**

### **National Night Out October 6, 2015**



### **Blazing a Trail for Literacy November 2015**





## Toys for Kids December 13, 2015



## Calendar Fundraiser- Help a Veteran May 5, 2016

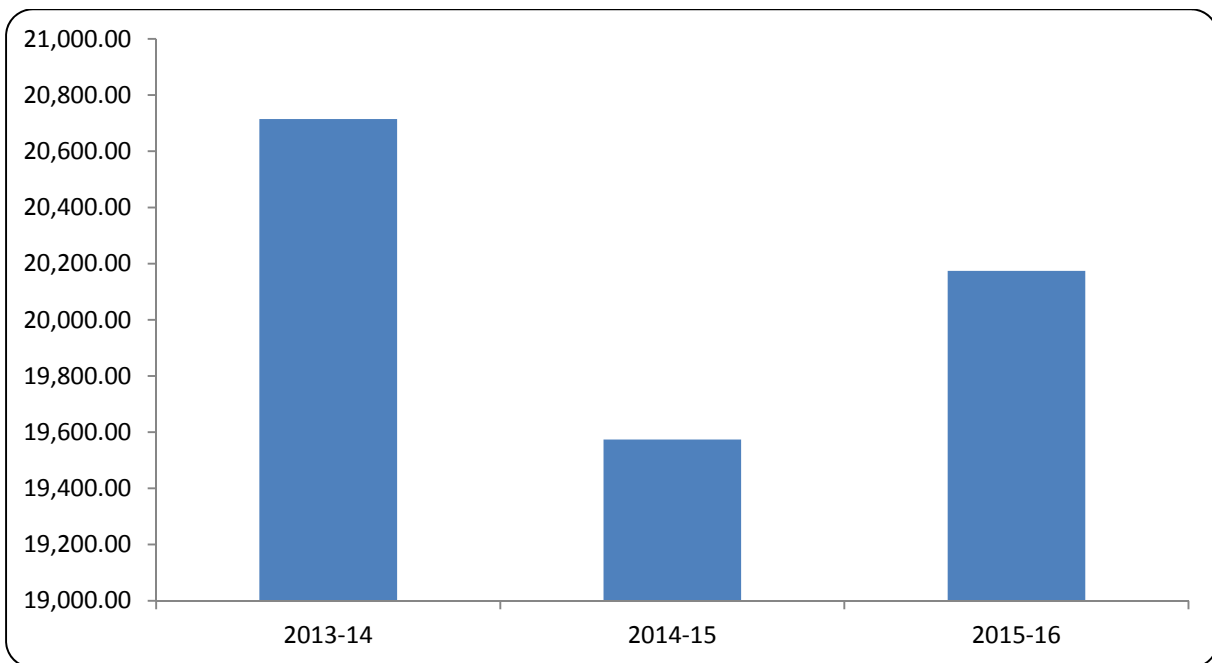


## MDA Fill the Boot May 2015



### 3 Year Comparison of MDA Collections

2013-14	2014-15	2015-16
20,714.82	19,573.98	20,174.21





## Independence Day Parade July 3, 2016



## Hope Koonsman Golf Tournament July 2016





## HEB Breakfast September 9, 2016



## 9/11 Memorial Stair Climb September 10, 2016





## EDUCT 9/11 Ceremony September 12, 2016

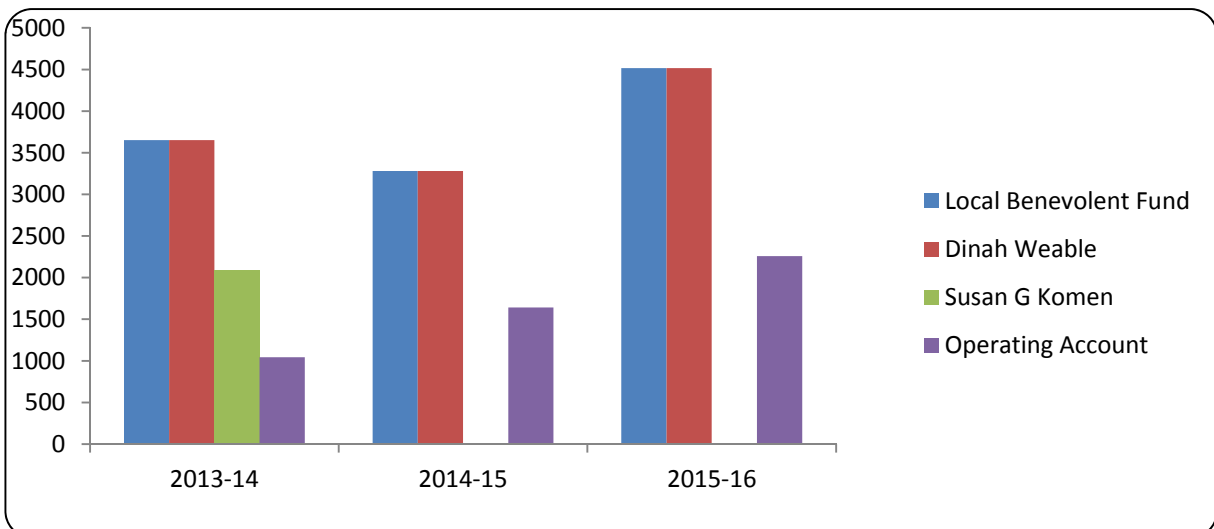


## Homecoming Parade September 23, 2016



### 3 Year Comparison of WFR Cares Enough to Wear Pink Campaign

Charity	2013-14	2014-15	2015-16
Local Benevolent Fund	3,652.07	3,280.56	4,515.80
Dinah Weable	3,652.07	3,280.56	4,515.80
Susan G. Komen	2,086.90	0.00	0.00
Operating Account	1,043.45	1,640.28	2,257.90
<b>Total</b>	<b>10,434.50</b>	<b>8,201.40</b>	<b>11,289.50</b>





# **This is your Fire Department!!**

## **Come see us sometime...**



## **...we would love to have you.**