

# **PUBLIC WORKS DEPARTMENT 2021-2022 BIENNIAL BUDGET**

Cody Colt  
Public Works Director

Patrick T. Hughes, PE  
Projects & Programs Manager

---

November 4, 2020

Yelm City Council Study Session

# Overview

- Introductions
  - What is Public Works?
  - Public Works Organization
- Budget Overview (10,000 ft. Level)
  - Operating & Capital Projects
- General Fund
  - Streets, Parks, Facilities & ER&R
- Enterprise Funds
  - Water, Wastewater, and Stormwater
- Questions

## Mission

- To provide essential public services and infrastructure to the Yelm Community and its Citizens

## Vision

- Make the City of Yelm a safe, healthy, happy home for all, with:



Safe neighborhoods and schools



Sustainable, cost effective public infrastructure



Strong, diverse economy



Vibrant public places with an enduring connection to our history

# What is Public Works?

CITY OF YELM

The steward of your water, wastewater, stormwater, transportation, parks, and facilities infrastructure

## **This is achieved through our Mission:**

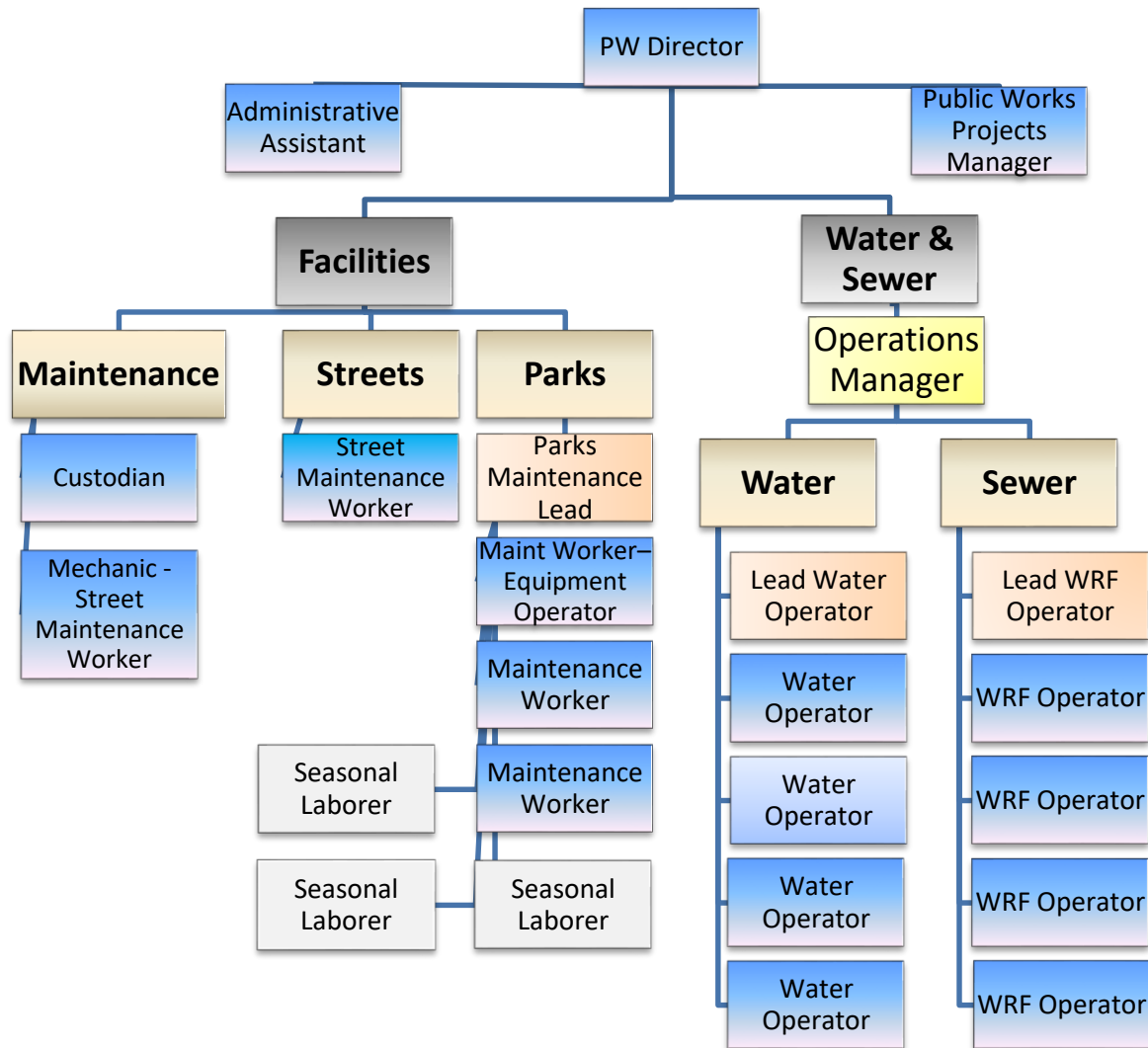
Public Works provides essential services to the citizens of Yelm in a prompt, courteous, safe, efficient, and cost-effective manner. Public Works, through its dedicated employees, strives to plan, design, build, maintain, and operate public infrastructure in a manner that respects the environment and the ability of government to adequately preserve these assets for succeeding generations.

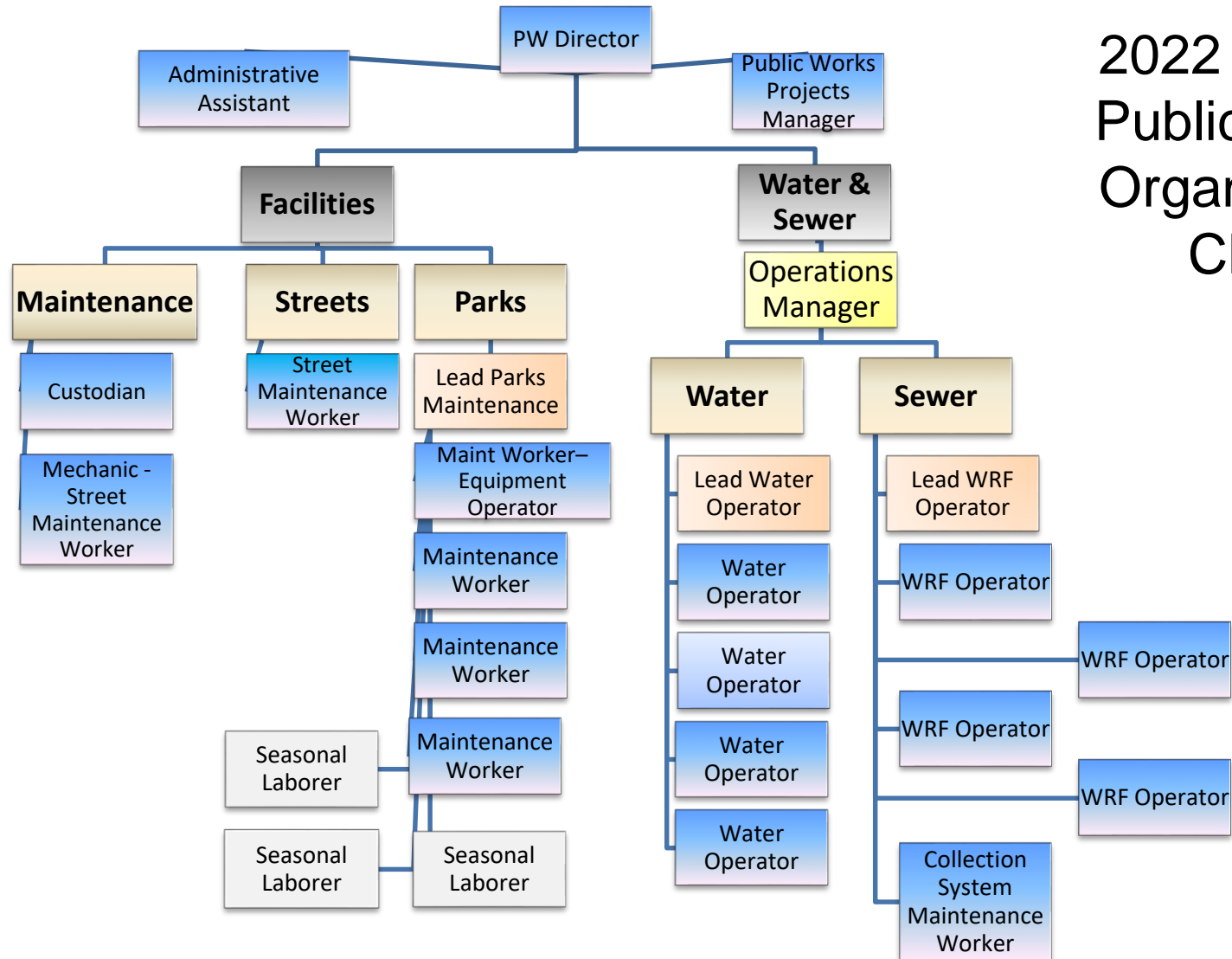
# Services We Provide

CITY OF YELM

- Maintenance
  - Buildings (facilities)
  - Water System
  - Wastewater Reuse System
  - STEP wastewater collections system
  - Streets/Sidewalks/Parking Lots
  - Parks & ROWs
  - Animal Control
  - Fleet
- Planning
  - Utilities
  - Transportation
  - Facilities
  - Parks
  - Emergency Response
- Construction Management
  - Roads/Bridges/Culverts
  - Water Distribution Systems
  - Water Treatment Systems
  - Wastewater Collections
  - Water Reuse Facilities
  - Streets
  - Stormwater Management
- Contract Management
  - Building Maintenance
  - Pavement Management
  - Interlocal Agreements
  - Franchise Agreements

## 2021 Budget Public Works Organization Chart





# Public Works Divisions

CITY OF YELM

- General Fund (Fund 001, 302)
  - Facilities, Parks, Municipal Building Fund
- Internal Service Fund (Fund 502)
  - Fleet, ER&R
- Street Fund (Fund 101, 102, and 316)
- Enterprise Funds (400, 401, 404, 412, 413)
  - Water, Sewer, Stormwater

# General & Internal Service Fund

CITY OF YELM



## Fund – Major 2020 Accomplishments

- Installed new kennel at Public Works
- Installed Storage Shed at City Park
- Entered an agreement with Enterprise Fleet Systems that cuts our ER&R costs in half
- Revitalized City Buildings and green spaces
- Adopted an Employee Recognition Program
- Adopted Training Tuesdays
- Adopted a monthly Newsletter

# General & Internal Service

## Fund - Budget Overview

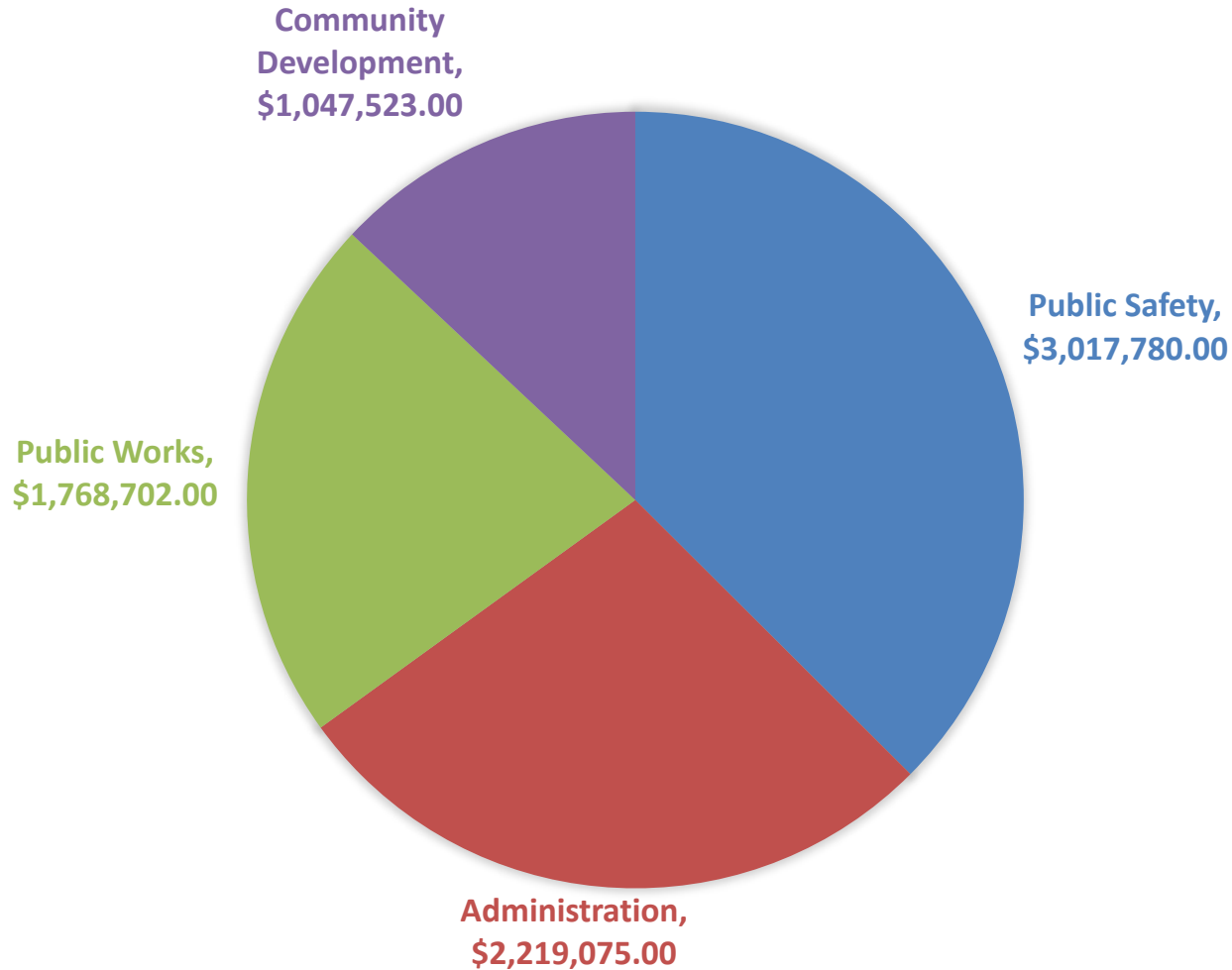
CITY OF YELM

FUND #	DESCRIPTION	2020	2021	2022
001	Parks	\$ 596,155	\$ 548,112	\$ 553,745
001	Animal Control	\$ 75,019	\$ 45,000	\$ 45,000
001	Facilities (Central Services)	\$ 564,149	\$ 468,590	\$ 491,259
302	Municipal Bldg Capital Projects	\$ 175,000	\$ 415,000	\$ 395,000
502	Fleet	\$ 413,364	\$ 292,000	\$ 163,000
	Totals:	\$ 1,822,687	\$ 1,768,702	\$ 1,548,004

# General Fund Expenditures

CITY OF YELM

## BUDGETED GENERAL FUND EXPENDITURES 2021



## Fund – Goals/Objectives 2021-2022

- Design and construct Cochrane Park Phase 4
- Complete construction of Community Garden at City Park
- Complete construction of Off-Leash Dog Park



# Street & Enterprise Funds

CITY OF YELM



# Street & Enterprise Funds

CITY OF YELM

Public Works Divisions:

Transportation (Streets/Sidewalks/Trails)

Facilities (Parks/Buildings/Animal Control)

Water

Wastewater/Reclaimed Water

Stormwater

## Major 2020 Accomplishments

### Transportation

- Completed Mill Road Sidewalk
- Initiated On-Call Contracts for Sidewalks and Streets
- Completed the Right-of-Way Acquisition for Mosman Ave Ph 2

### Facilities

- Purchased and installed new dog kennel

### Water

- Completed design of Water Main extensions near Walmart
- Began property acquisition and completed preliminary design for SE Reservoir

## Major 2020 Accomplishments (cont.)

### Wastewater/Reclaimed Water

- Began design of WRF Phase 2 Improvements

### Stormwater

- Completed GPS/GIS Survey of all storm structures

# Street & Enterprise Funds

## Budget Overview

CITY OF YELM

FUND #	DESCRIPTION	2020	2021	2022
101	Municipal Street	\$ 529,572	\$ 555,261	\$ 548,121
102	Arterial Streets	\$ 115,000	\$ 120,000	\$ 110,000
316	Road & Street Construction	\$ 2,238,291	\$ 2,021,000	\$ 751,000
	<b>Totals:</b>	<b>\$ 2,882,863</b>	<b>\$ 2,696,261</b>	<b>\$ 1,409,121</b>
400	Stormwater Utility	\$ 392,219	\$ 291,706	\$ 295,604
401	Water Ops	\$ 2,867,982	\$ 4,387,650	\$ 2,929,557
404	Water Capital	\$ 28,626	\$ 4,880,846	\$ 4,984,500
412	Sewer Ops	\$ 3,031,632	\$ 2,807,361	\$ 2,928,784
413	Sewer Capital	\$ 3,908,195	\$ 21,385,100	\$ 7,645,000
	<b>Totals:</b>	<b>\$ 10,228,654</b>	<b>\$ 33,752,663</b>	<b>\$ 18,783,445</b>

# Street & Enterprise Fund

CITY OF YELM

## Revenues

Funding Sources: Rates, Grants, Loans, Bonds, Investment Earnings

Fund #	Description	2020	2021	2022
101	Municipal Street	\$ 499,143	\$ 484,151	\$ 480,469
102	Arterial Streets	\$ 84,300	\$ 86,540	\$ 84,085
316	Road & Street Construction	\$ 2,214,805	\$ 1,672,266	\$ 413,371
	Totals:	\$ 2,214,805	\$ 2,242,957	\$ 977,925
400	Stormwater Utility	\$ 407,756	\$ 431,746	\$ 436,053
401	Water Ops	\$ 3,670,694	\$ 3,058,477	\$ 3,088,622
404	Water Capital	\$ 455,000	\$ 408,504	\$ 408,504
412	Sewer Ops	\$ 3,040,945	\$ 3,152,937	\$ 3,157,937
413	Sewer Capital	\$ 3,402,659	\$ 19,957,340	\$ 7,557,340
	Totals:	\$ 10,977,054	\$ 27,009,004	\$ 14,648,456

# Street & Enterprise Funds

CITY OF YELM

## Capital Improvements (Transportation/Parks)

TRANSPORTATION				
CIP#	Fund		2021	2022
		<b>Arterial Streets</b>		
2	102	Inter-local Dynameq Model	\$5,000	
3	101	Bi Annual Traffic Counts - Synchro Model Update	\$11,000	
		<b>Street Preservation and Maintenance</b>		
4	316	Pavement Management System - Program City Wide Evaluation		\$21,000
5	101/316	Annual Overlay and Pavement Preservation Program	\$390,000	\$390,000
		<b>Local Street Projects</b>		
7	316	SW Mosman Ave Phase 2 - Railroad to Longmire	\$1,497,200	
		<b>Non-Motorized Projects</b>		
12A	316	ADA Compliance Program	\$110,000	\$110,000
12B	101/316	Sidewalk Repair and Replacement Program	\$100,000	\$100,000
15	316	Cochrane Park Multiuse Path		\$125,000
16	316	2nd Street SE Sidewalk		\$80,000
PARKS AND RECREATION				
		<b>Existing Parks</b>	2021	2022
27	302	Feasibility of Improvements and Concepts - Longmire Park	\$70,000	
51	302	Veterans Memorial Upgrades - City Park		\$70,000
		<b>New Parks</b>		
17	001	Yelm Prairie Line Trail Phase 2 (extension to Nisqually River)		\$1,200,000
49	302	Off-Leash Dog Park and WRF Access Drive	\$175,000	

Note: Full List of Capital Projects is in the annual budget documents

# Street & Enterprise Funds

CITY OF YELM

## Capital Improvements (Utilities)

STORM WATER				
CIP#	Fund			
		<b>Storm Water System</b>	2021	2022
		<no projects planned 2021-2026>		
WATER SYSTEM				
		<b>Water Storage</b>	2021	2022
30	404	SE Reservoir - Siting, Design and Construction	\$530,488	\$2,032,000
		<b>Water Pumping &amp; Distribution</b>		
31	404	2019 Water Main Extensions	\$841,785	
32	404	Annual Water Main Improvement Program	\$1,087,500	\$1,130,500
50	404	Downtown Well Building Upgrades	\$1,000,000	
52	404	Office and Maintenance Building at WRF	\$1,380,000	
SEWER SYSTEM				
		<b>Water Reclamation Facility</b>	2021	2022
38/39	413	WRF Phase 2 Upgrades (MBR Conversion & Bio-Solids Process)	\$22,473,059	\$8,597,800
		<b>Collection and Redistribution</b>		
24/43	413	Cochrane Park - Restrooms and Outfall Improvements	\$595,000	\$305,000

Note: Full List of Capital Projects is in the annual budget documents

## Goals and Objectives 2021-2022 (Non-Capital)

### General

- Reorganize the Public Works Department in 2021-2022 to create efficiencies and accommodate growing demand on water, sewer, parks and street infrastructure
- Apply Planned Maintenance program through-out all city Facilities.

### Streets/Sidewalks

- Complete bi-annual Traffic Counts in 2021
- Prioritize Annual Road Maintenance Program (maintain what we have)
- Prioritize Annual Sidewalk Maintenance Program (ADA ramp upgrades)
- Secure funding and complete construction of Mosman Ave Ph 2

## Goals and Objectives 2021-2022 (Non-Capital)

### Stormwater

- Complete mapping of stormwater facilities in preparation for NPDES Phase 2 compliance

### Water

- Bring on new Water Operator to keep up with new construction

### Wastewater & Water Reuse

- Bring on a STEP Maintenance Person to perform STEP Maintenance.

# QUESTIONS OR COMMENTS?

Cody Colt, Public Works Director  
(360) 458-8412 [codyc@yelmwa.gov](mailto:codyc@yelmwa.gov)

Patrick Hughes, Programs & Projects Manager  
(360) 458-8499 [patrickh@yelmwa.gov](mailto:patrickh@yelmwa.gov)