



City of Yelm
EST. 1924
WASHINGTON

NOTICE of PUBLIC HEARING
May 16th, 2024 at 9:30am
Yelm City Hall, 106 2nd St SE
YELM HEARING EXAMINER

Mailed on or before April 30th, 2024

The City of Yelm Hearing Examiner will hold a public hearing to receive comments on the following proposal:

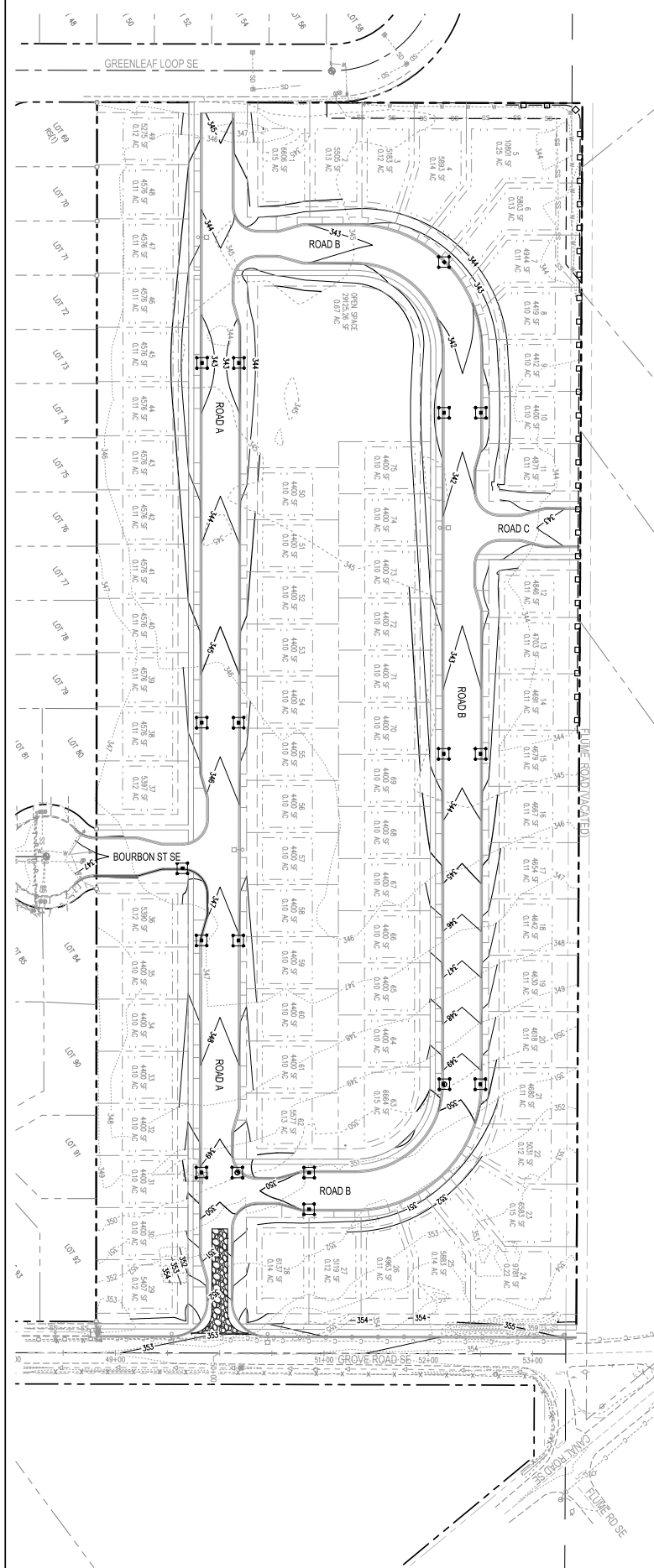
Willow Glenn IV, 75 Lot Subdivision, Project Number LD 2023.0188

Request to subdivide 12.53 acres into 75 single-family lots, located off Grove Rd in Yelm, WA. Assessor's Tax Parcel Number 64303500100. The property is zoned Moderate-Density Residential (R-6).

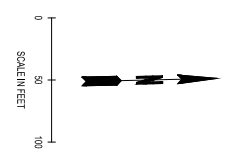
The Hearing Examiner will make a decision on the proposal within 10 working days after the hearing. Testimony may be given at the hearing or through written comments submitted before the hearing. Comments must be received by the close of the public hearing. Such written comments may be submitted to the City of Yelm at 901 Rhoton Rd SE, Yelm, 98597. Comments may also be emailed to Assistant Planner Andrew Kollar at andrewk@yelmwa.gov. Documents related to the project are available for public review at the City's Public Services Building located at 901 Rhoton Rd SE.

The hearing will be held on May 19th, 2024 at 9:30am at the Yelm City Hall Council Chambers, located at 106 2nd St SE, Yelm 98597

It is the City of Yelm's policy to provide reasonable accommodations for people with disabilities. If you are a person with a disability in need of accommodations to conduct business or to participate in government processes or activities, please contact Kathy Linnemeyer, at 360-458-8816 at least five working days prior to the scheduled event.



- LEGEND**
- EXISTING CONTOURS (MAJOR/MINOR)
 - PROPOSED CONTOURS (MAJOR/MINOR)
 - INLET SEDIMENT PROTECTION
 - 6" STORM PIPE
 - STANDARDIZED CONSTRUCTION ENTRANCE
 - CATCH BASIN TYPE 1
 - CATCH BASIN TYPE 2



DESIGNED BY D. HALLIPS	
DRAWN BY N. DILLINGER	
CHECKED BY M. HARRIS	
DATE APRIL 2024	
JOB NO. 240088	
PROJECT NAME WILLOW GLENN IV	SHEET NO. 4 OF 27 DRAWING NO. EC-01

SHEET TITLE
 PRELIMINARY EROSION CONTROL PLAN

PROJECT NAME:
 WILLOW GLENN IV
 9819 GROVE ROAD SE
 YELM, WASHINGTON

SCJ ALLIANCE
 CONSULTING SERVICES

8730 TALLON LANE NE, SUITE 200, LACEY, WA 98516
 P: 360.352.1465
 SCJALLIANCE.COM

REVISIONS	DATE	BY