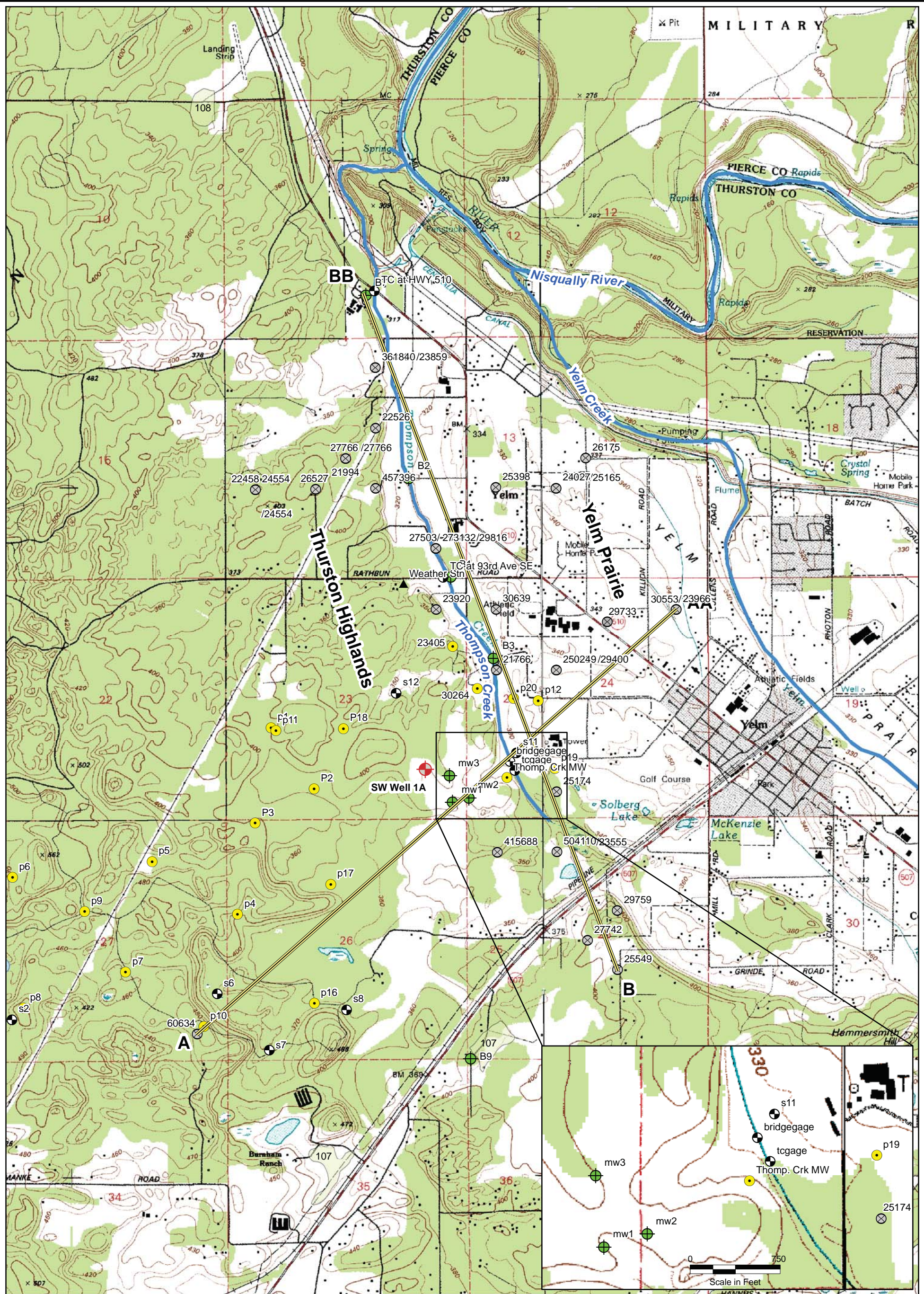


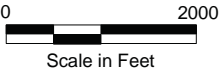
**APPENDIX B**  
**GEOLOGIC CROSS-SECTIONS**





LEGEND

- Ecology Well Logs
- Monitoring Wells
- Piezometers
- SW Well 1A
- Staff Gages
- Weather Station
- Streams



Map Projection:  
UTM NAD27, Zone 10 North

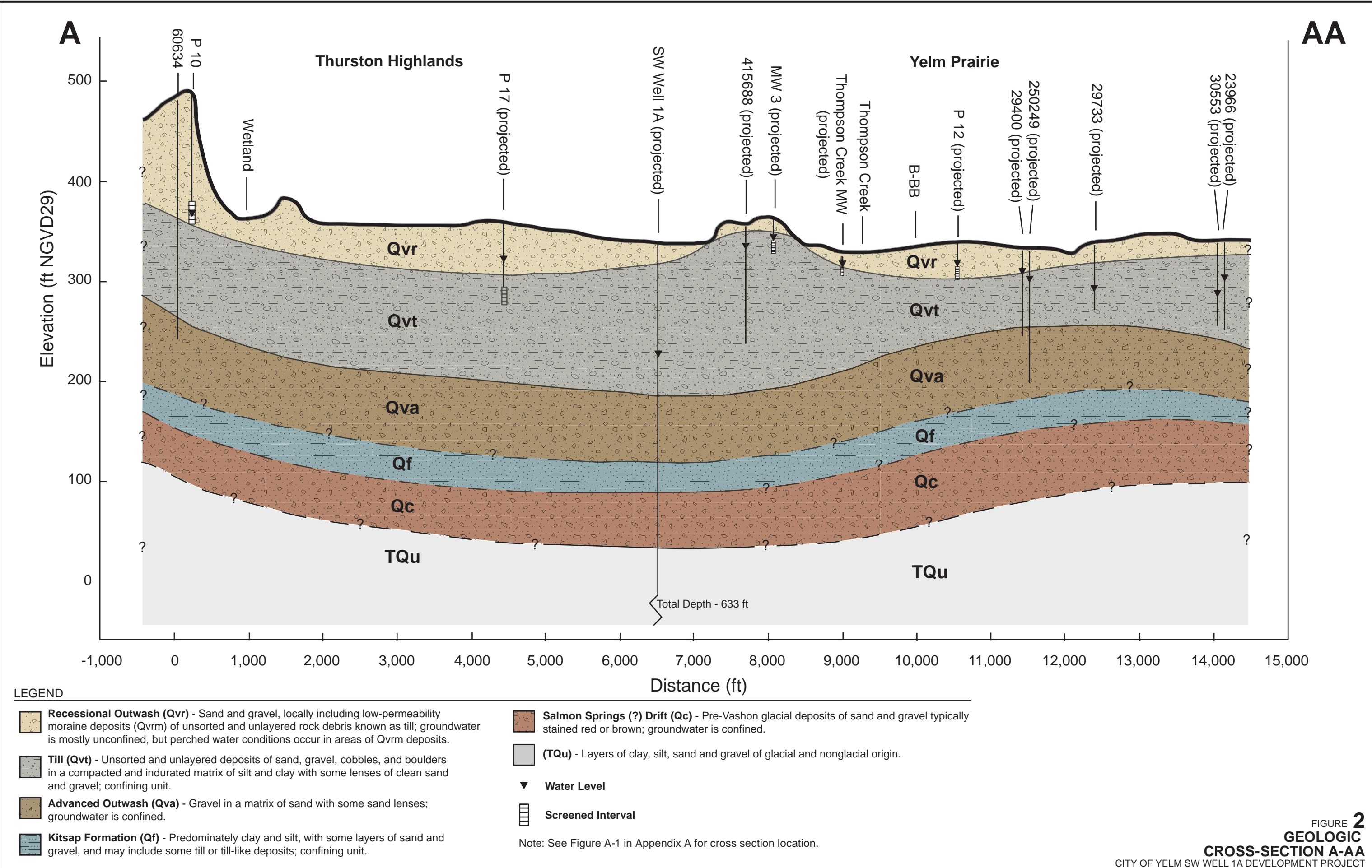
Source:  
Washington State Geospatial Data Archive;  
Washington Department of Ecology

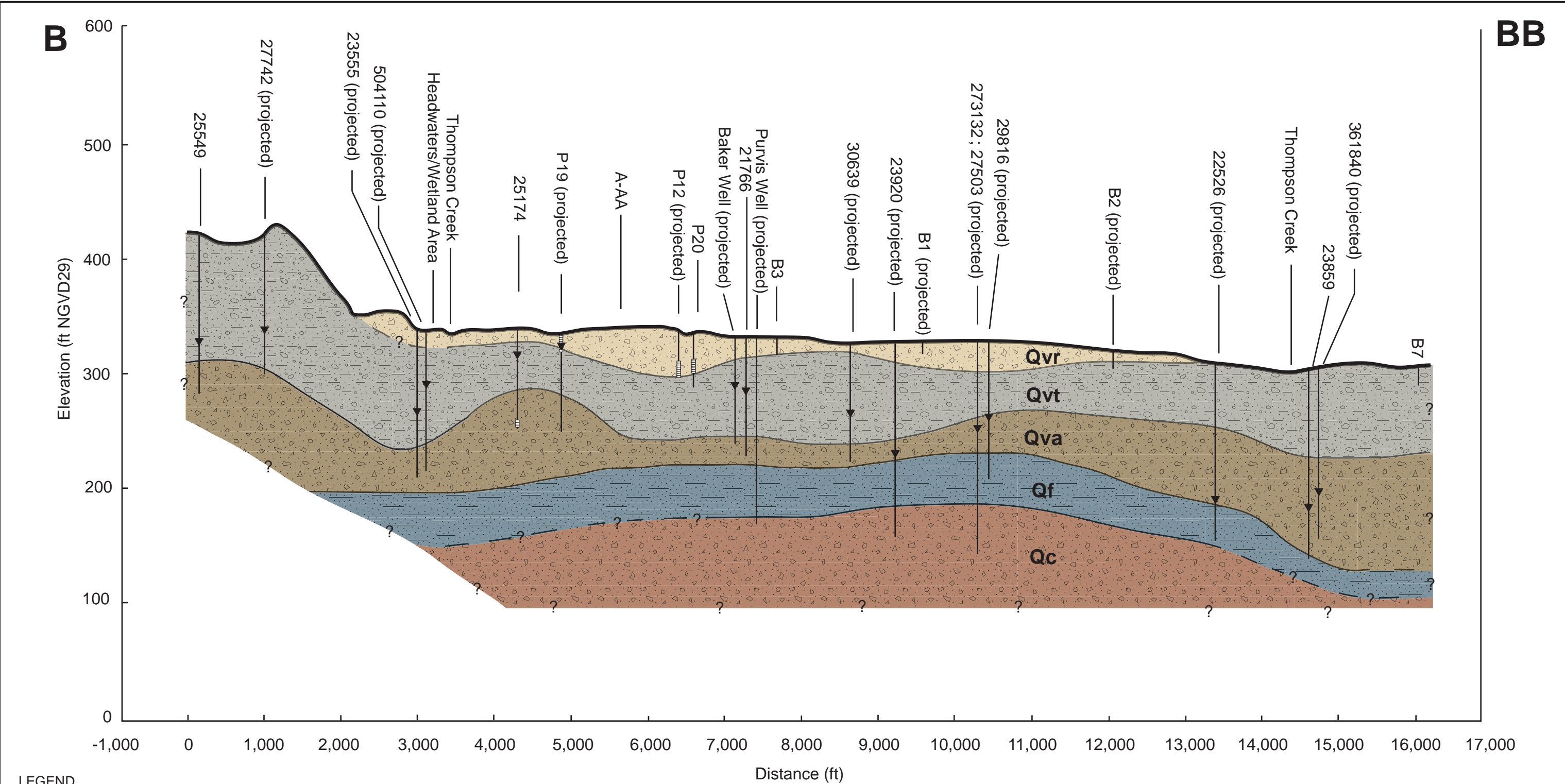
This figure was originally produced in color. Reproduction in black and white may result in a loss of information.

FIGURE **A-1**  
**GEOLOGIC CROSS-SECTION  
AND WELL LOCATIONS**  
CITY OF YELM SW WELL 1A DEVELOPMENT PROJECT

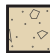
**Golder Associates**











LEGEND


- 


**Recessional Outwash (Qvr)** - Sand and gravel, locally including low-permeability moraine deposits (Qvr<sub>m</sub>) of unsorted and unlayered rock debris known as till; groundwater is mostly unconfined, but perched water conditions occur in areas of Qvr<sub>m</sub> deposits.
- 

**Till (Qvt)** - Unsorted and unlayered deposits of sand, gravel, cobbles, and boulders in a compacted and indurated matrix of silt and clay with some lenses of clean sand and gravel; confining unit.
- 

**Advanced Outwash (Qva)** - Gravel in a matrix of sand with some sand lenses; groundwater is confined.
- 

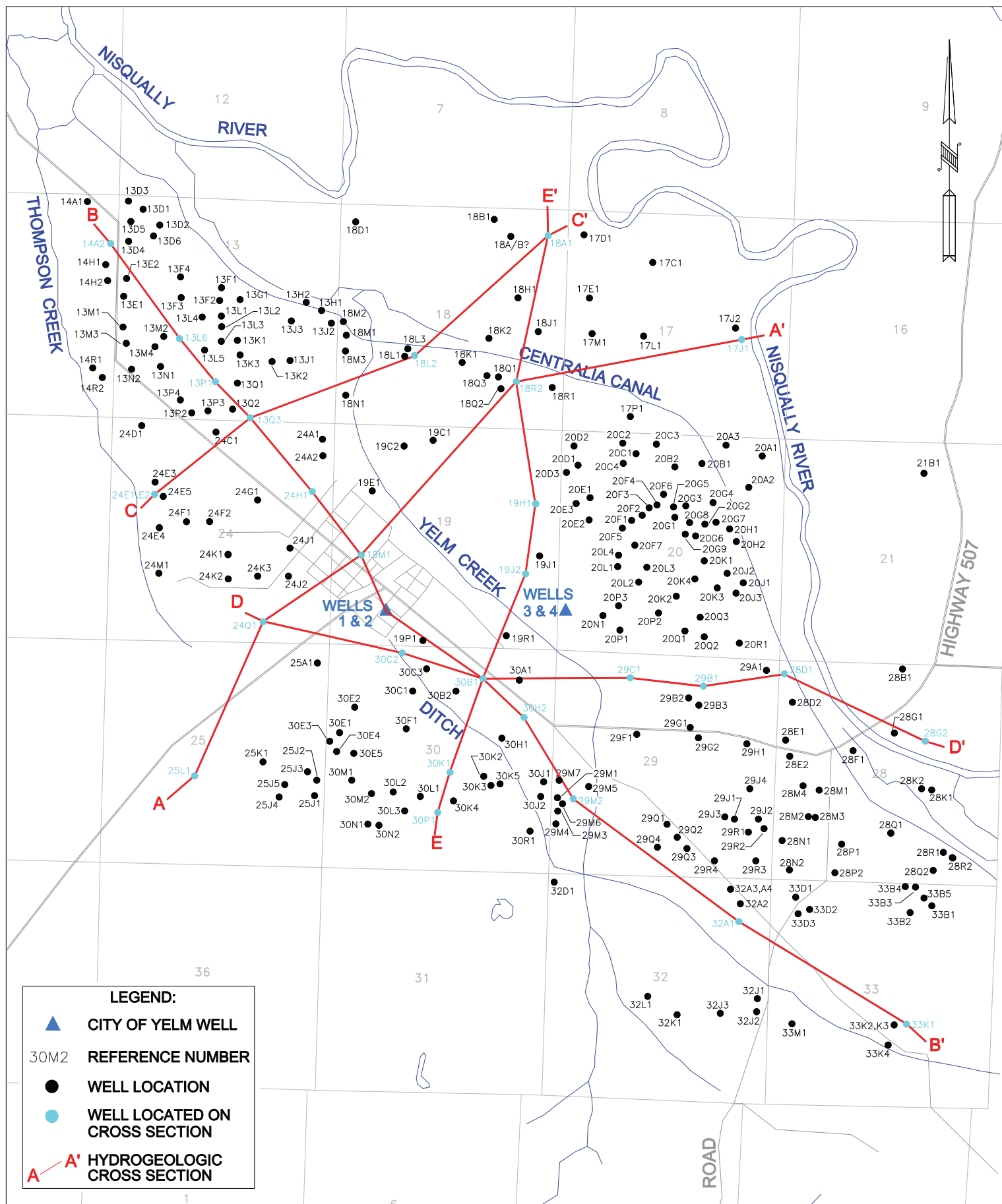
**Kitsap Formation (Qf)** - Predominately clay and silt, with some layers of sand and gravel, and may include some till or till-like deposits; confining unit.
- 

**Salmon Springs (?) Drift (Qc)** - Pre-Vashon glacial deposits of sand and gravel typically stained red or brown; groundwater is confined.
- 

**Water Level**
- 

**Screened Interval**
- Note: See Figure A-1 in Appendix A for cross section location.

FIGURE 3  
GEOLOGIC  
CROSS-SECTION B-BB  
CITY OF YELM SW WELL 1A DEVELOPMENT PROJECT



PM: BGC/KAH

MAY 2001

00-211WH

SCALE 1"=3,000'

**FIGURE 2**  
**WELL AND CROSS SECTION LOCATION MAP**  
**CITY OF YELM WELLHEAD PROTECTION PLAN**