

LEGEND

- | | |
|-------------------------|------------------------------|
| City of Yelm Well | SW Yelm Wellfield |
| Private Well | City of Yelm |
| McAllister Model Domain | Nisqually Indian Reservation |
| | Fort Lewis |

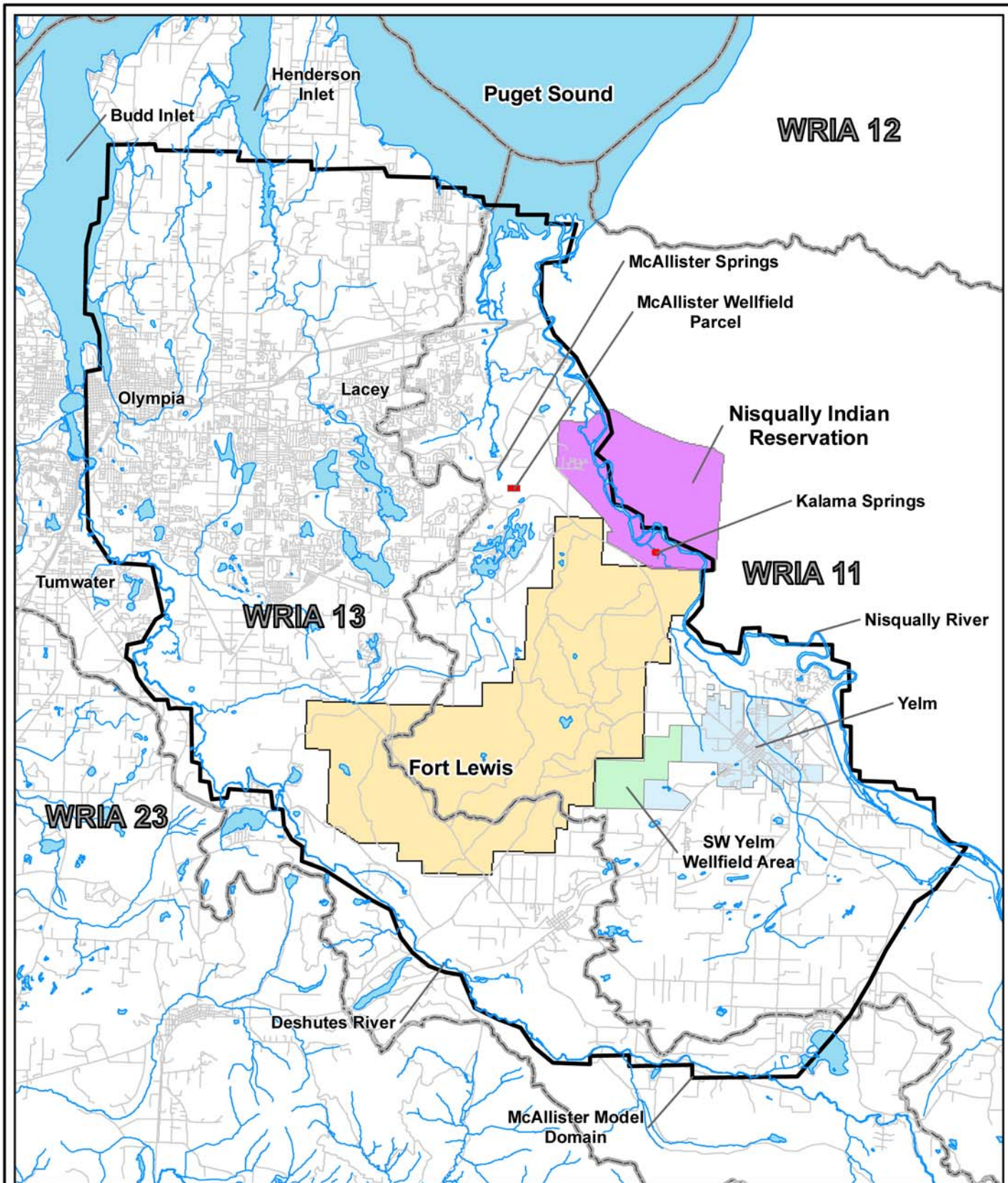
0 5000
Scale in Feet

Map Projection:
Washington State Plane
South Zone NAD 1983

Source:
Golder Associates, Inc.

This figure was originally produced in color. Reproduction in black and white may result in a loss of information.

FIGURE 1-1
LOCATION OF PLANNED
SW YELM WELLFIELD,
YELM'S CURRENT WELLS AND
OTHER KEY FEATURES



LEGEND

- McAllister Model Domain
- WRIA Boundary
- SW Yelm Wellfield
- City of Yelm
- Nisqually Indian Reservation
- Fort Lewis

0 15000

Scale in Feet

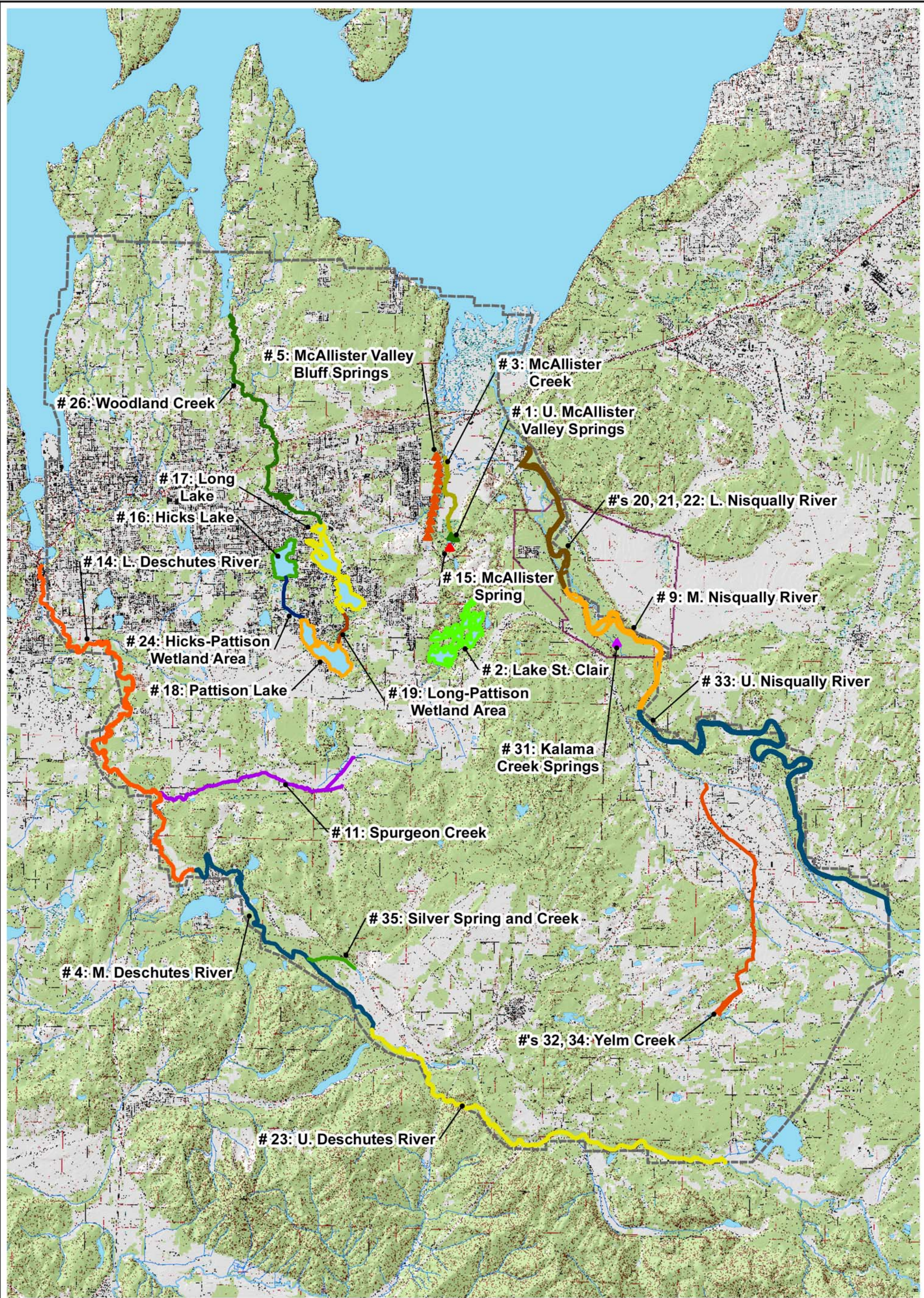
Map Projection:
Washington State Plane
South Zone NAD 1983

Source:
Golder Associates, Inc.

This figure was originally produced in color. Reproduction in black and white may result in a loss of information.



FIGURE 3-1
MAJOR FEATURES OF
THE MCALLISTER
GROUNDWATER MODEL



LEGEND

- Model Boundary
- Water Course
- Water Body
- Nisqually Indian Reservation

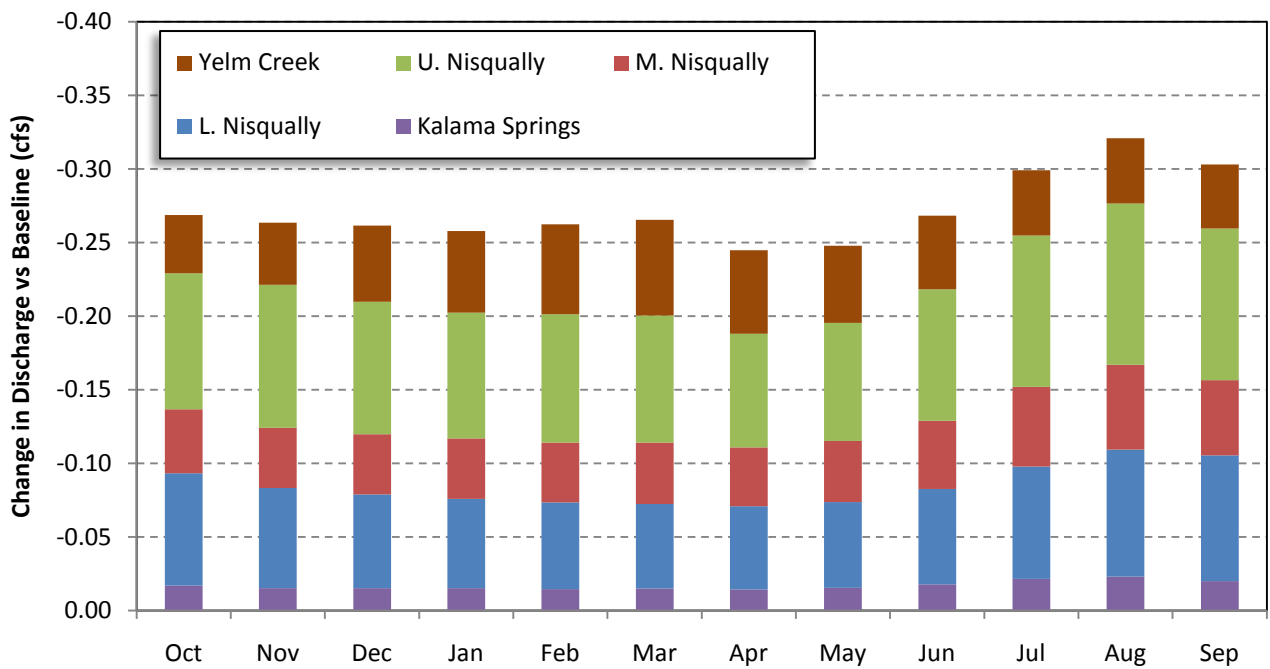
0 10000
Scale in Feet

Map Projection:
Washington State Plane
South Zone NAD 1983

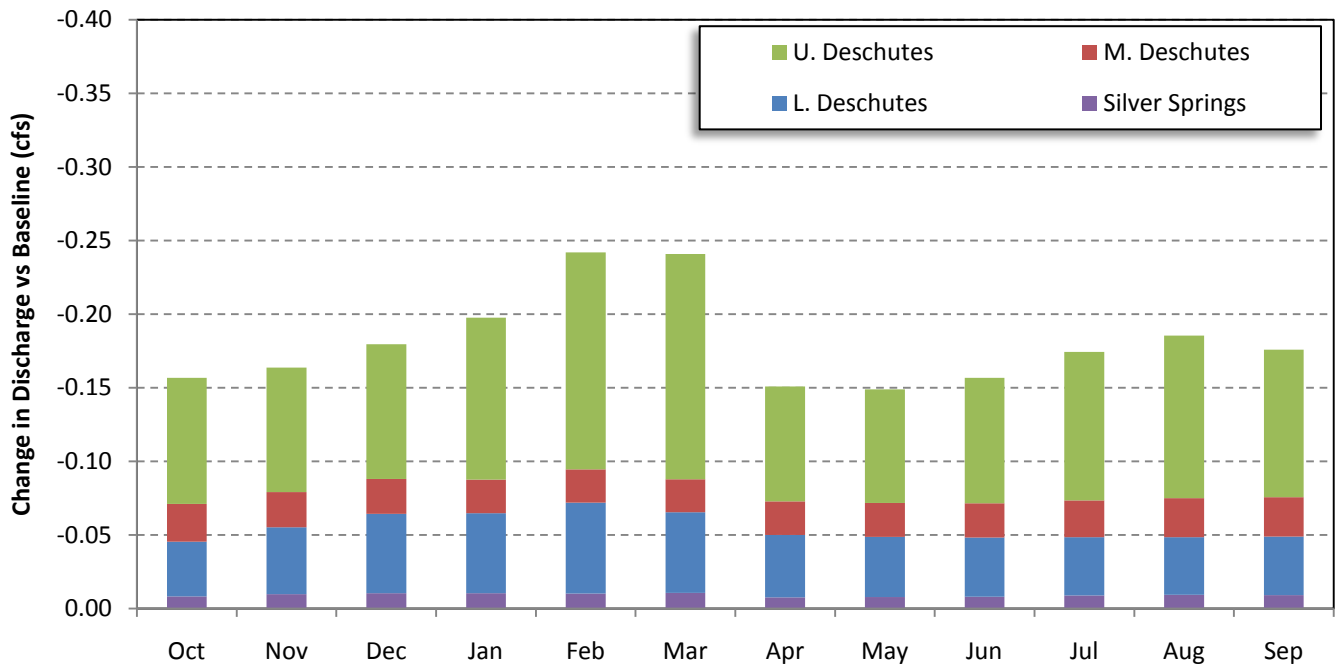
Source:
USGS, NHD,
Golder Associates, Inc.

This figure was originally produced in color. Reproduction in black and white may result in a loss of information.

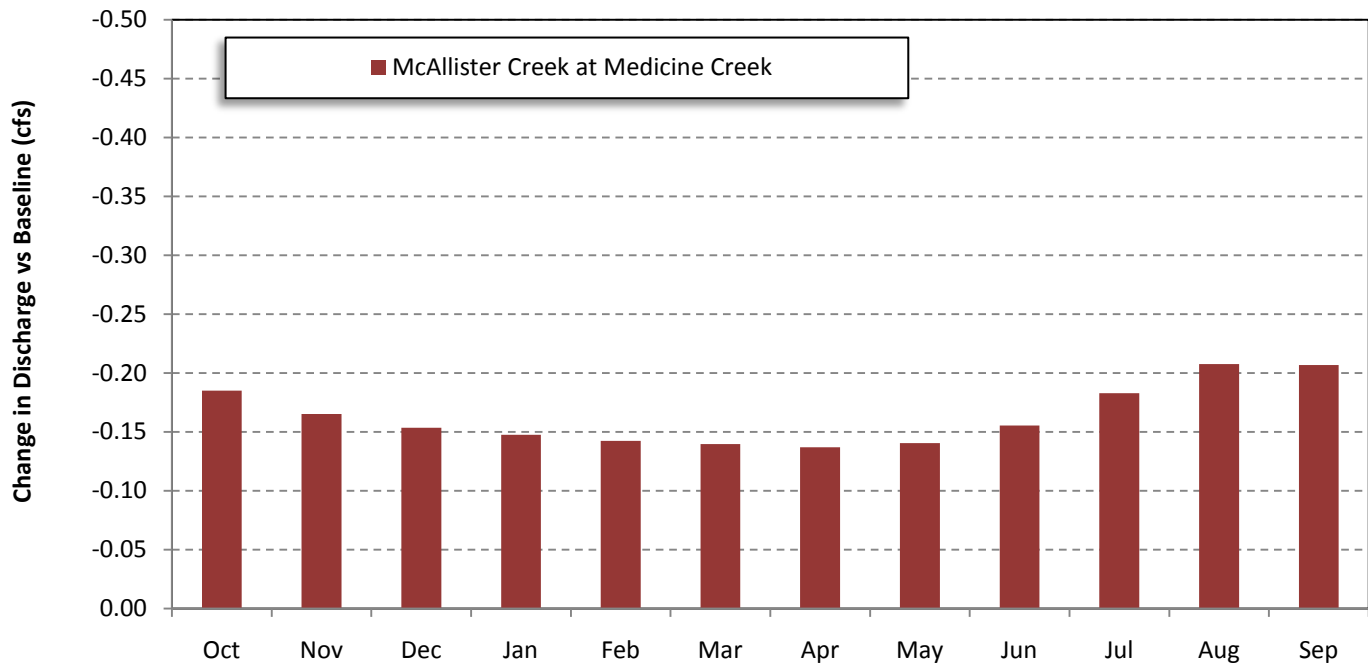
FIGURE 3-2
MCALLISTER MODEL WATER
BUDGET ANALYSIS



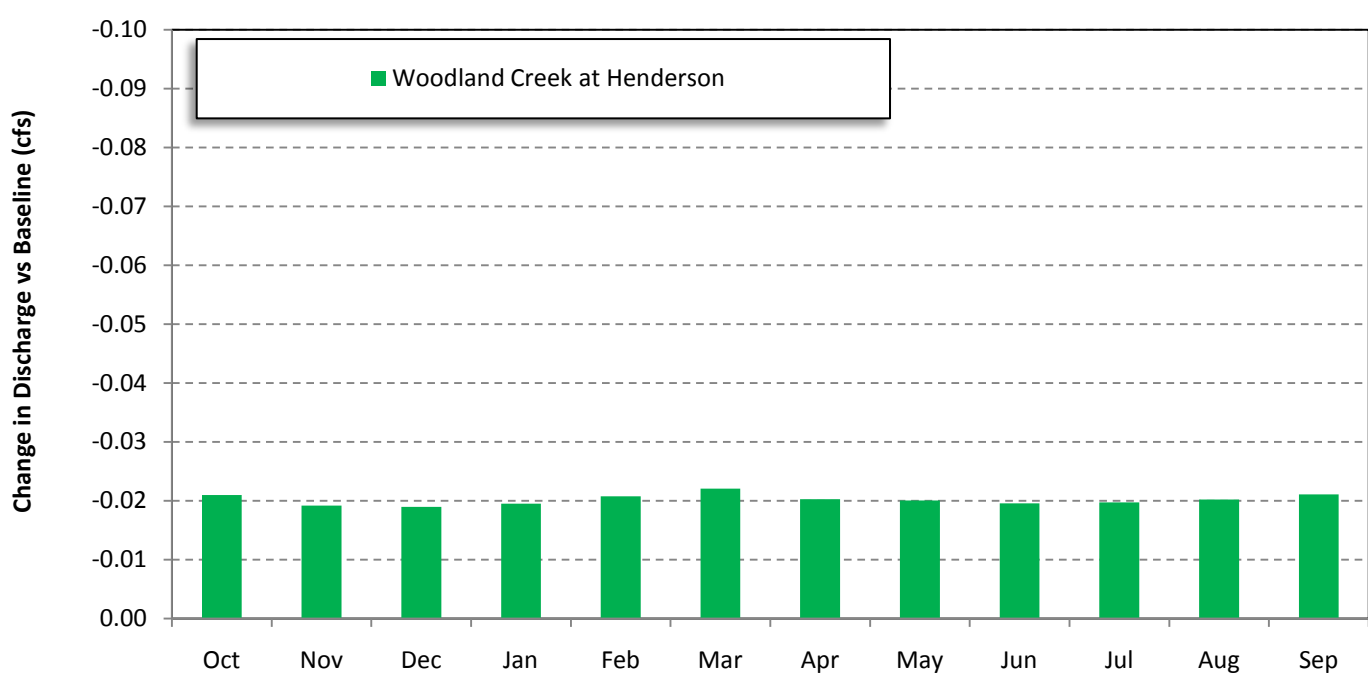
City of Yelm – 2010 Water Rights Mitigation Plan		PREDICTED MONTHLY CHANGES IN GROUNDWATER DISCHARGE TO THE NISQUALLY RIVER AT RM 4.3		
SHANNON & WILSON, INC. Geotechnical and Environmental Consultants		Project No: 21-1-12322.004	Date: 12/1/10	Drawn by: SDT Checked by: LMW
		FIG 3-3		



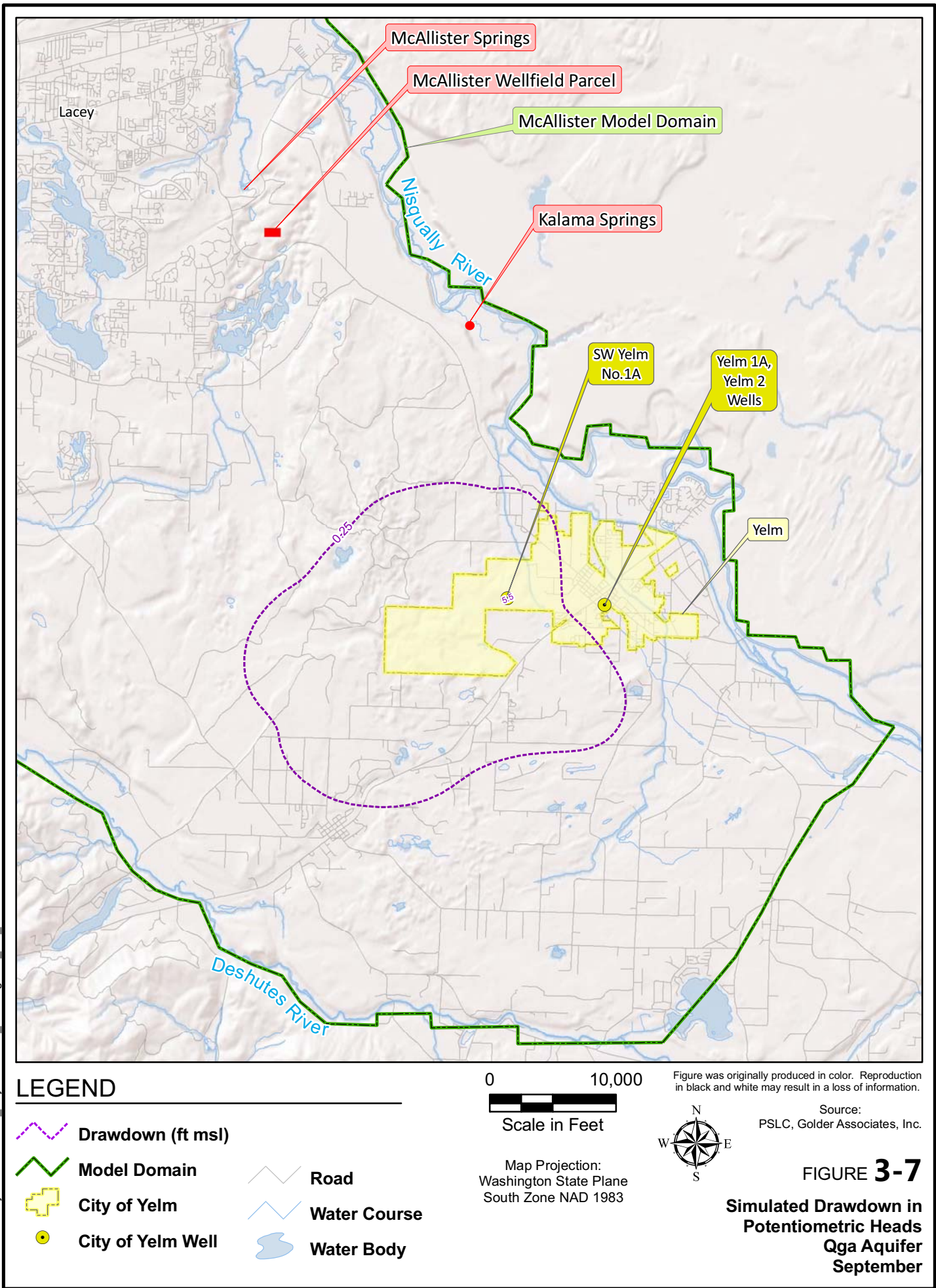
City of Yelm – 2010 Water Rights Mitigation Plan		PREDICTED MONTHLY CHANGES IN GROUNDWATER DISCHARGE TO THE DESCHUTES RIVER AT TUMWATER		
SHANNON & WILSON, INC. Geotechnical and Environmental Consultants		Project No: 21-1-12322.004	Date: 12/1/10	Drawn by: SDT Checked by: LMW
		FIG 3-4		

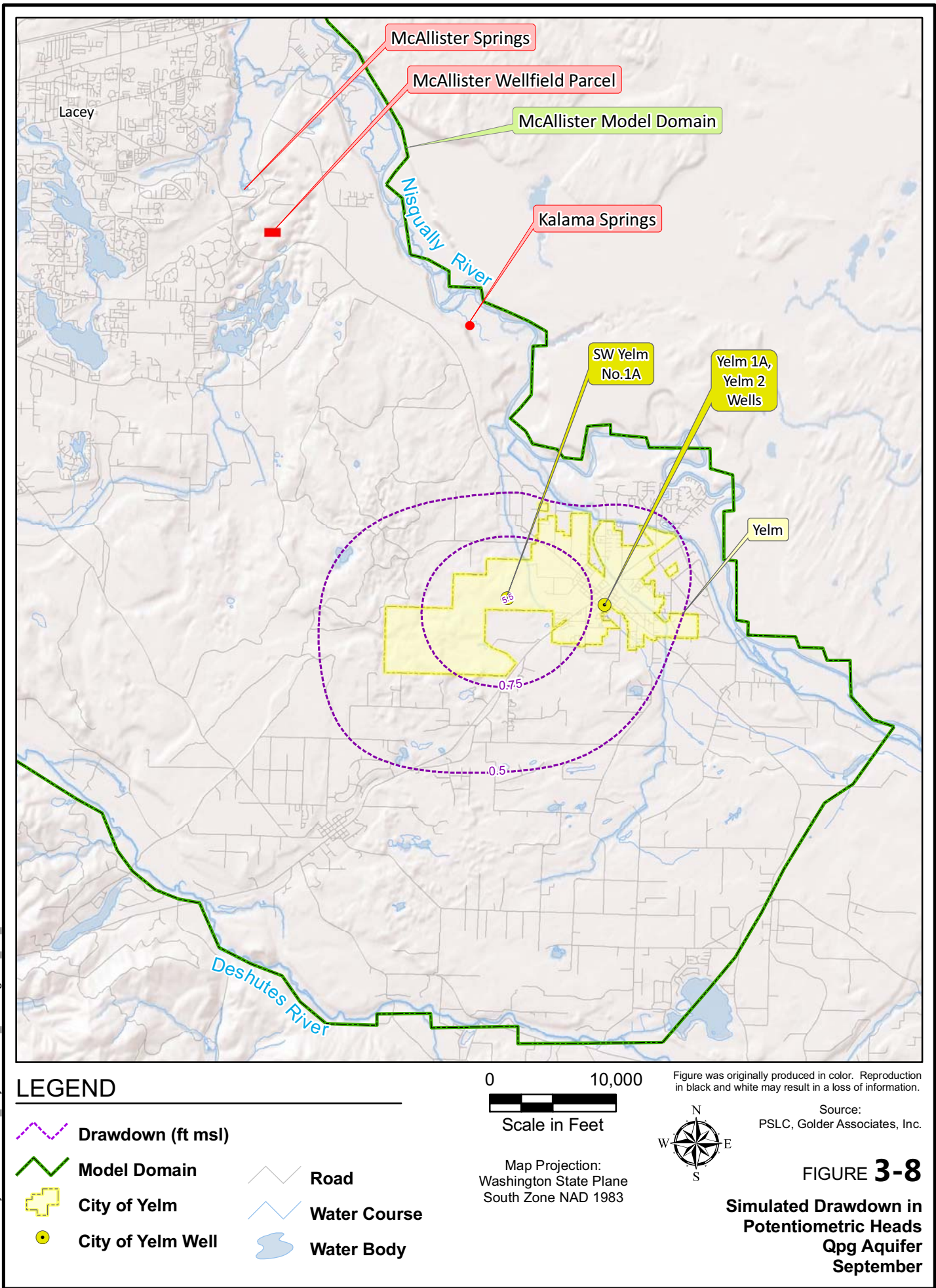


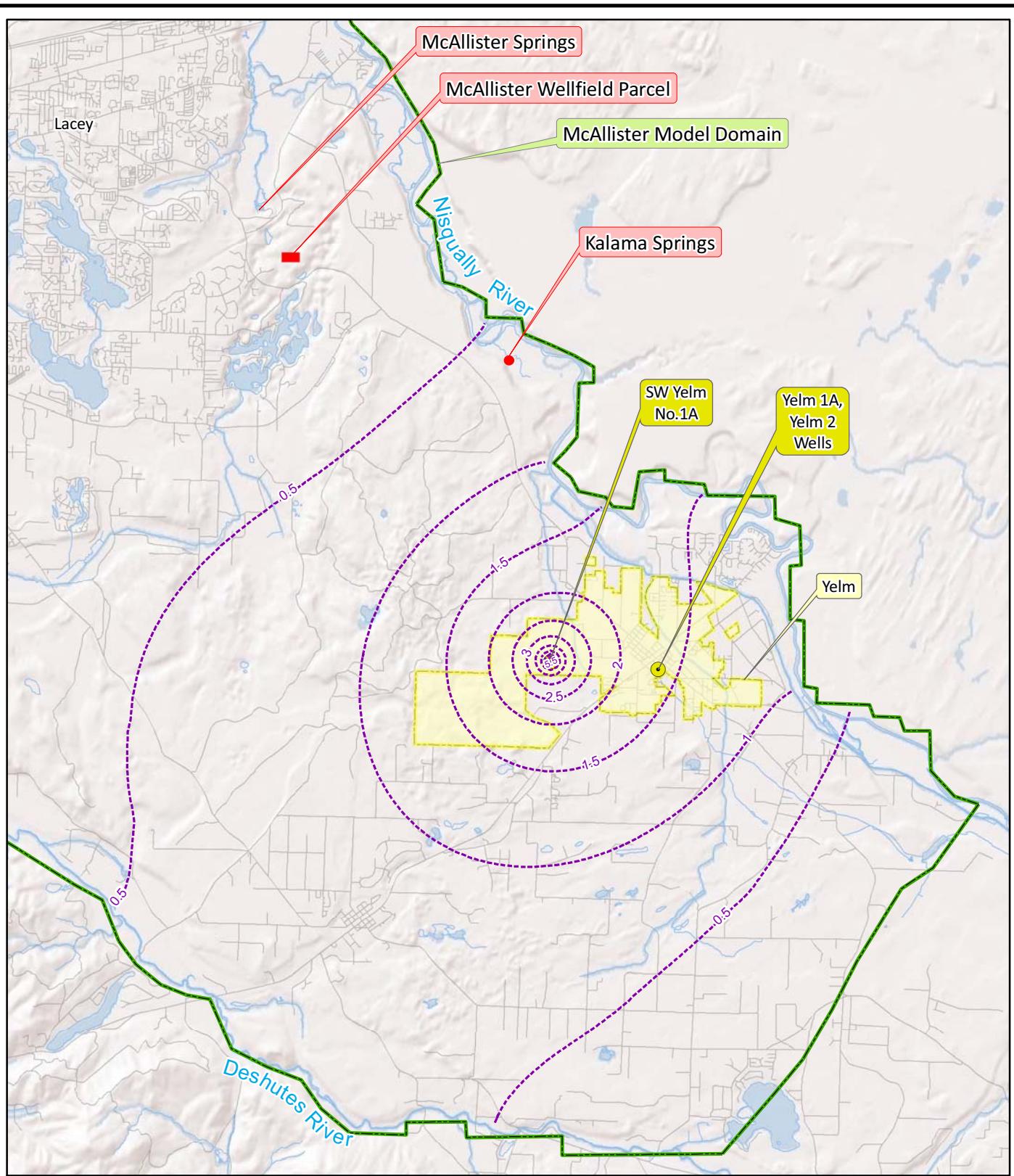
City of Yelm – 2010 Water Rights Mitigation Plan		PREDICTED MONTHLY CHANGES IN GROUNDWATER DISCHARGE TO MCALLISTER CREEK AT MEDICINE CREEK		
SHANNON & WILSON, INC. Geotechnical and Environmental Consultants		Project No: 21-1-12322.004	Date: 12/1/10	Drawn by: SDT Checked by: LMW FIG 3-5



City of Yelm – 2010 Water Rights Mitigation Plan		PREDICTED CHANGES IN GROUNDWATER DISCHARGE TO WOODLAND CREEK AT HENDERSON INLET		
SHANNON & WILSON, INC. Geotechnical and Environmental Consultants		Project No: 21-1-12322.004	Date: 12/1/10	Drawn by: SDT Checked by: LMW FIG 3-6







LEGEND

- | | | | |
|--|-------------------|--|--------------|
| | Drawdown (ft msl) | | Road |
| | Model Domain | | Water Course |
| | City of Yelm | | Water Body |
| | City of Yelm Well | | |

0 10,000
Scale in Feet

Map Projection:
Washington State Plane
South Zone NAD 1983



Figure was originally produced in color. Reproduction in black and white may result in a loss of information.

Source:
PSLC, Golder Associates, Inc.

FIGURE 3-9

**Simulated Drawdown in
Potentiometric Heads
TQu Aquifer
September**