
Beneficial Use Analysis Water Right Certificate S2-00972CWRIS

FINAL REPORT

Prepared for:

**City of Olympia
Public Works/Water Resources
PO Box 1967
Olympia, WA 98507-1967**

**City of Lacey
Department of Public Works
PO Box 3400
Lacey, WA 98509-3400**

**City of Yelm
Department of Public Works
105 Yelm Avenue West
Yelm, WA 98597**

By:

**WestWater Research
805 Broadway St., Ste 415
Vancouver, WA 98660**

December 1, 2010



Table of Contents

SUMMARY OF FINDINGS	1
PURPOSE AND SCOPE	2
WATER RIGHT DESCRIPTIONS	3
Subject Water Right	3
Place of Use	4
EVIDENCE OF HISTORICAL USE	6
Point of Diversion	6
Distribution System	6
Aerial Photo Interpretation	7
BENEFICIAL USE ANALYSIS	8
Purpose and Scope of Beneficial Use Analysis	8
Instantaneous Quantity (Qi)	8
Consumptive Use and Diversion Requirements (Qa)	9
Estimate of Crop Irrigation Requirement (CIR)	9
Adjustments to the CIR and Diversion Quantity	10
Consumptive Use Calculation	12
Additional Consumptive Use	13
Future Use of Farm	13
Summary and Conclusion	13

Summary of Findings

A Beneficial Use Analysis (BUA) was completed for the Cities of Olympia, Lacey, and Yelm (cities) to examine irrigation use for water right certificate S2-00972CWRIS. The BUA is to be used to assist the cities in a determination of water beneficially used on the Dillard and Juanita Jensen farm.

Water Right S2-00972CWRIS has a priority date of January 18, 1971 for the withdrawal of 100 acre-feet per year (AF) at a maximum rate of 0.5 cfs (224.42 gpm) for the irrigation of 50 acres. Water Right S2-00972CWRIS possesses a season of use for irrigation from May 1st – Sept 15th, with the caveat that all diversion will cease when flows of the Deschutes River fall below 180 cubic feet per second (cfs) on May 1 with a linear decrease to 35 cfs on June 30 and 35 cfs from June 30 to September 15 as measured at the USGS Gauging station located near Rainier.

The Jensen Family has owned a portion of the farm since 1933 and continued to add acreage over time. The entire farm is about 300 acres and is currently irrigated for production of pasture grass. Aerial photographs were reviewed from 1981 through 2009 to estimate the total irrigated acreage associated with water right. The certificated place of use covered by the water right is 50 acres. The aerial photo analysis shows that approximately 104 acres were irrigated, including the authorized place of use of the water right.

A beneficial use analysis was conducted for the water right that estimated the total annual diversion quantity and annual consumptive quantity (ACQ). **Table 1** shows an overview of annual withdrawals and ACQ from the authorized POU on the water right..

Table 1: Summary of Authorized Irrigation Use for S2-00972CWRIS

Estimated and Historical Components	Original Certificate	Actual Use (2006-2010)
Irrigated Acres	50	50
Annual Diversion (AF)	100	89.62
ACQ (AF)	N/A	67.21
Rate (gpm)	225	826.5 ¹

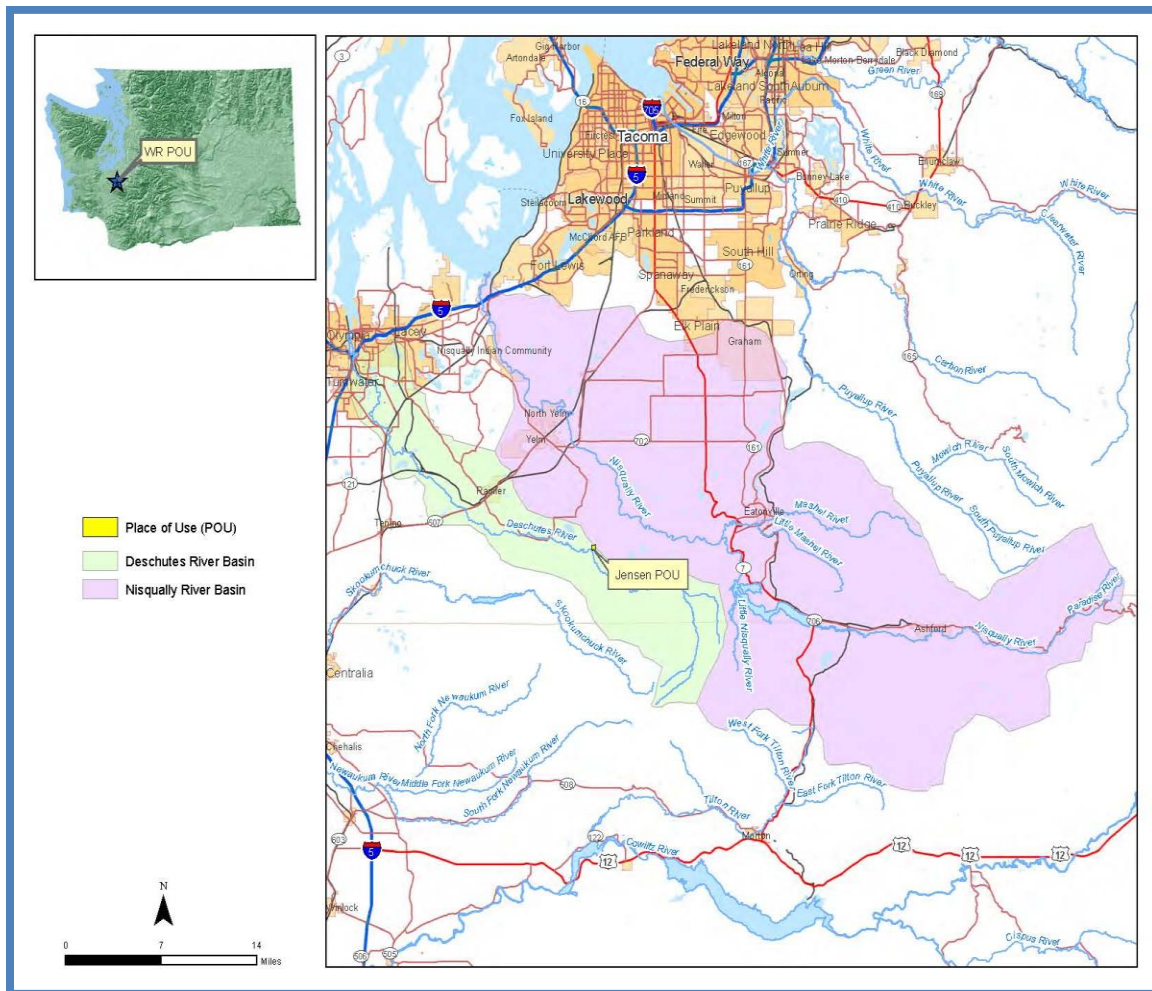
¹ The 826.5 gpm is what the system is capable of doing, the actual rate is unknown.



Purpose and Scope

The cities are proposing to purchase and formally cancel the water right as mitigation for modeled surface flow effects in the Deschutes River associated with water right applications.

Figure 1: General Location of the Jensen Family Farm



The scope of this report includes:

- A summary of the water right and administrative histories.
- A summary of the historic and beneficial uses of the water right.
- Supporting evidence and documentation of historical use, including historical aerial photographs and historical daily flow data for the Deschutes River.
- Analysis and estimate of the annual irrigation water use and annual consumptive quantity (ACQ) of water associated with the Jensen water right.

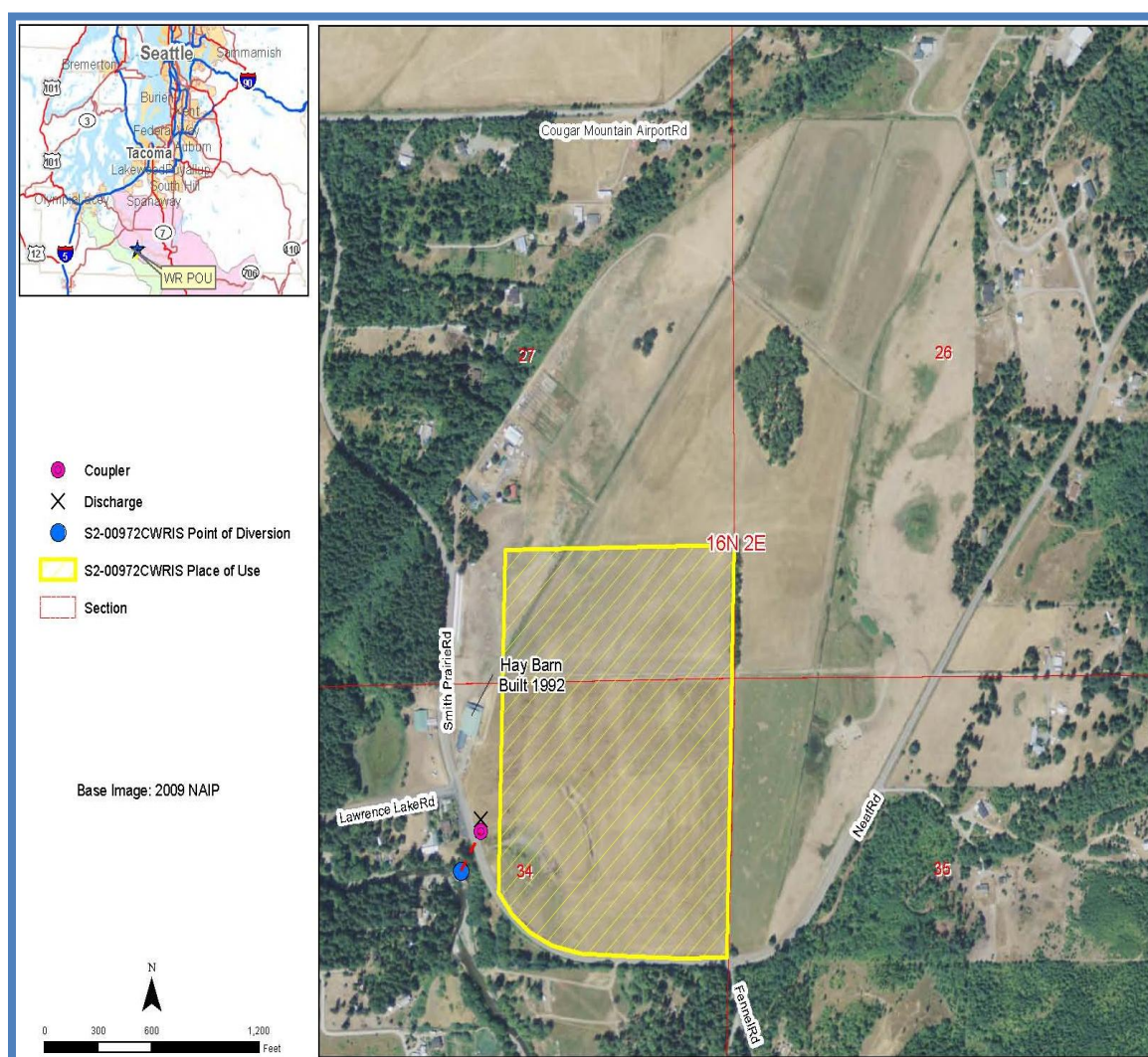


Water Right Descriptions

Subject Water Right

The Jensen water right is located approximately 10 miles southeast of Yelm, Washington. The Point of Diversion (POD – Deschutes River) and Places of Use (POU) are shown in **Figure 2**.

Figure 2: The POU and POD for S2-00972CWRIS



A summary of the water right and details of its administrative history are provided below in **Table 2** and the full water right file is included as **Appendix D**.



Table 2: Water Right Summary for Certificate No. S2-00972CWRIS

Certificate Number:	S2-00972CWRIS
Owner Name:	Dillard and Juanita Jensen
Certificate Name:	Dillard Jensen
Source:	Deschutes River-Budd Inlet
Uses:	Irrigation of 50 acres
Periods of use:	Irrigation: May 1 st –September 15 th
Duty (Qa):	100 AF
Rate (Qi):	0.50 cfs (225 gpm)
Priority Date:	January 18 th , 1971
Points of Diversion (POD):	NE ¼, NE ¼, of Section 34, T. 16 N., R. 2 E.W.M.
Place of Use (POU):	NE ¼, NE ¼, of Section 34, lying northerly and easterly of Neat Road and easterly of Smith Prairie Road and SE½, SE ¼, SE ¼, Section 27; all in T. 16N., R. 2 E.W.M.

The water right is conditioned so all diversion shall cease when the flow of the Deschutes River falls below 180 cubic feet per second (cfs) on May 1 with a linear decrease to 35 cubic cfs on June 30 and 35 cfs from June 30 to September 15 as measured at the United States Geological Survey Gauging station located near Rainier.

Place of Use

The original place of use is shown in Figure 2. Actual irrigated areas are shown in Figure 3, which illustrates both a De Facto change in the POU, as well as additional irrigated acreage. In summary:

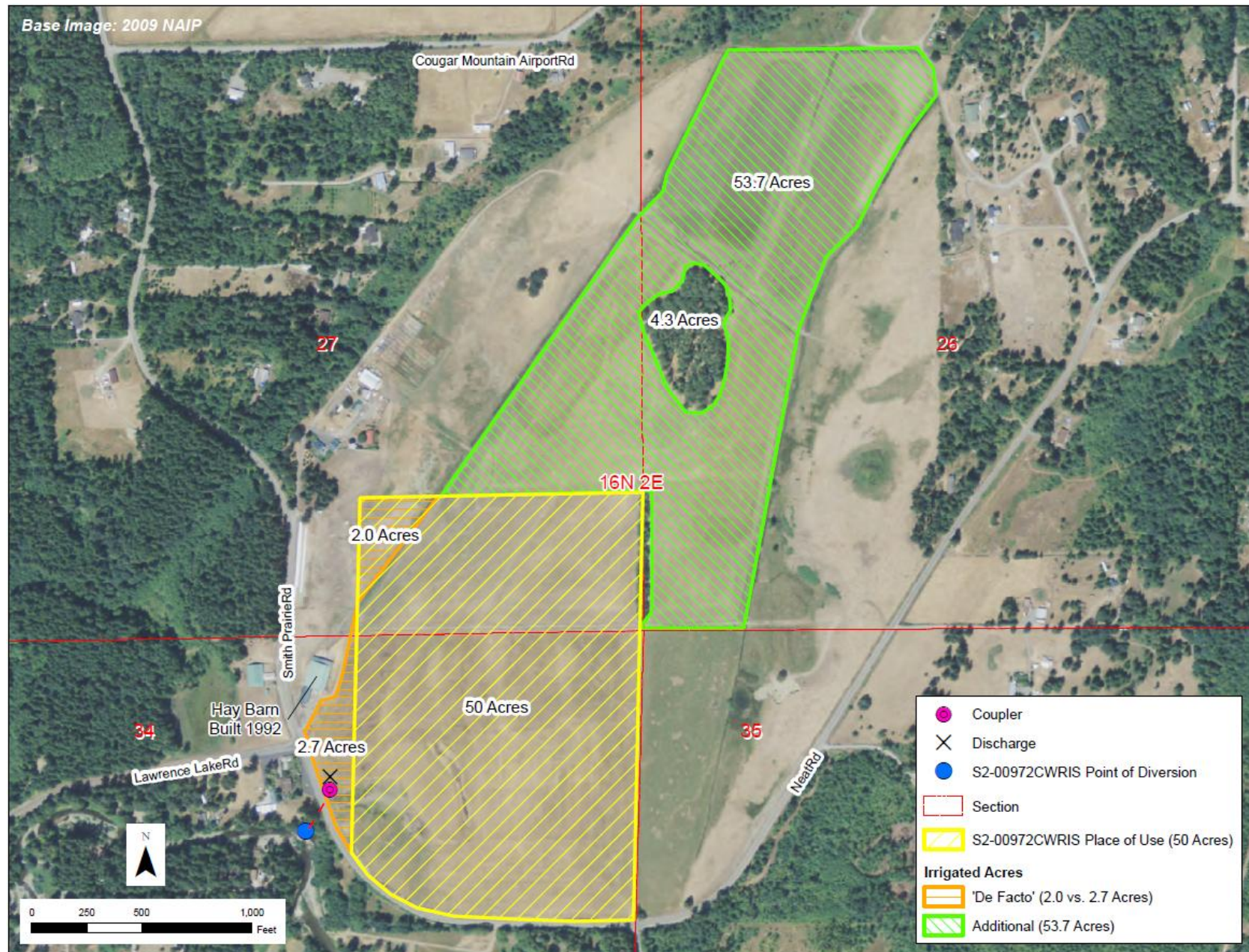
- 2.0 acres in the NW corner of the original POU (shaded orange) were never irrigated.
- 2.7 acres in the SW corner of the property (shaded orange) are not part of the original POU, but were irrigated.
- 53.7 acres were irrigated although not covered by the water right (shaded green).

According to the Department of Ecology's *Water Resources Program Policy for Conducting Tentative Determinations of Water Rights*, "[w]hen evaluating unauthorized changes to water rights, the department generally considers beneficial use to be the measure of the right, even if some attributes of the right may not be consistent with the current authorization." Therefore, for this analysis 2 acres in the SW corner are considered a de facto change to the water right and will be considered in the ACQ calculations.

The consumptive use (CU) analysis in this report focuses on the quantity of water that was put to beneficial use within the authorized POU, which includes the 2.0 acres of the De Facto change discussed above. .



Figure 3: Actual POD and POU including De Facto Changes and Additional Usage

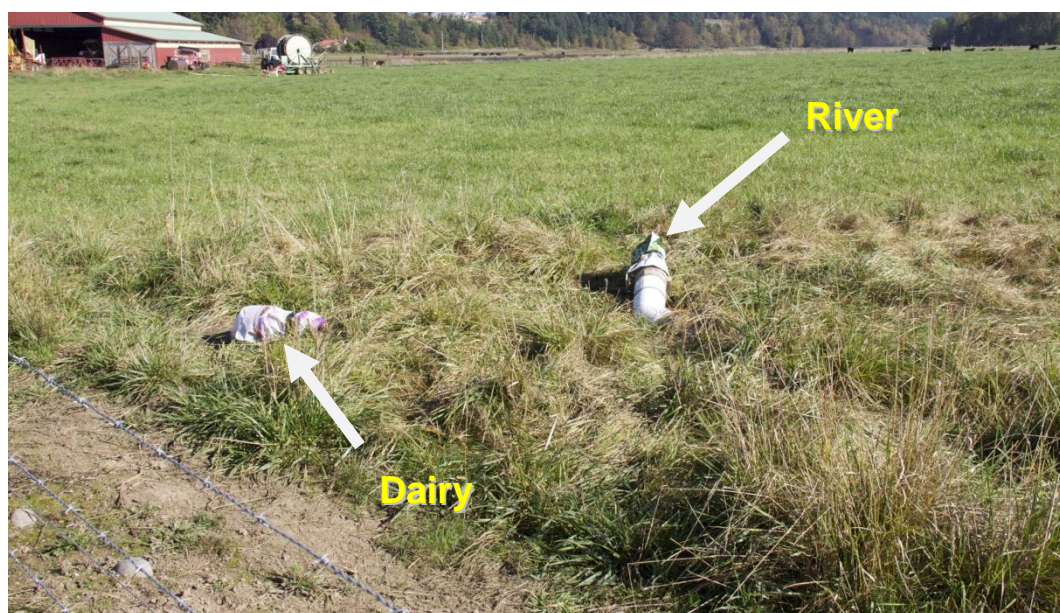


Evidence of Historical Use

Point of Diversion

There is one point of diversion (POD) associated with the Jensen property (**Figure 2**). The water is diverted from the Deschutes River through a pipe that runs under Smith Prairie Rd. and surfaces through a riser/coupler on the Jensen property. When the river reaches low flows, wastewater from a nearby dairy is used for late season irrigation, generally in August or September. The discharge for the dairy water is located adjacent to the riser/coupler (**Figure 4**). The use of dairy waste for irrigation is not included in this analysis.

Figure 4: Point of Diversion: Riser/Coupler and Dairy Discharge



The riser is located on the right side of the photo while the dairy discharge is on the left.

Distribution System

Irrigation water is distributed from the Deschutes River to land application using an underground piping system with a diesel pump as the power source used for water extraction. Fuel was purchased for farm equipment as well as for the diversion pump, so there is no feasible way to separate fuel use for the diversion pump from that used for other farm machinery.

The irrigation water is applied beneficially through a big gun sprinkler device. The same pump and big gun were used for both the river water and dairy waste irrigation, meaning,

simultaneous irrigation using both sources was not possible. This section includes pictures illustrating the specific components of the distribution system. **Appendix B** includes additional pictures of the distribution system.

Aerial Photo Research

Aerial photos for the water right POU were researched to develop evidence of active farming over the history of the water right. **Table 3** summarizes the relevant characteristics about these photos, including photograph year, color, resolution, and source. These photos, located in **Appendix A**, indicated that there was historical and consistent cultivation and irrigation of the lands within the POU. Additional information is provided to support the aerial photos in the Beneficial Use section, below.

Table 3: List of Aerial Photographs Reviewed

Year	Type	Resolution	Source
1981	Black and White	Medium	USGS/EROS (NHAP)
1986	True Color	Low	NASA (LANDSAT 5)
1991	Black and White	Medium	USGS/EROS (NAPP)
1993	True Color	Low	NASA (LANDSAT 5)
1996	Black and White	High	Thurston County
2000	Color	High	Thurston County
2002	True Color	Low	NASA (LANDSAT 5)
2003	True Color	Low	NASA (LANDSAT 5)
2004	Color	High	USDA/FSA (NAIP)
2005	Color	High	USDA/FSA (NAIP)
2006	Color	High	USDA/FSA (NAIP)
2009	Color	High	USDA/FSA (NAIP)

Aerial Photo Interpretation

The following comments are intended to help better understand the aerial photos located in **Appendix A**.

- The “true-color” and color photos show the terrain in the same hues as our eyes perceive the landscape. The apparent green color in the true-color photographs suggests active cultivation consistent with irrigation.
- Most black & white (B/W) photos show that the cultivated areas are darker than non-irrigated areas.
- It is not possible to calculate the quantity of water usage from the aerial photos collected. The aerial photos support cultivation on a regular basis and signs of irrigation can be detected from the contrast between areas irrigated and not irrigated and areas where hay was cut and left to dry.
- Low resolution images are difficult to assess and reach any clear conclusions.

Beneficial Use Analysis

Purpose and Scope of Beneficial Use Analysis

RCW 90.03.380, authorizes that a change in the place of use, point of diversion, and/or purpose of use of a water right to enable irrigation of additional acreage or the addition of new uses may be permitted. This may only occur if such change results in no increase in the annual consumptive quantity (ACQ) of water used under the water right. ACQ is defined as the estimated or actual annual amount of water diverted pursuant to the water right, reduced by the estimated annual amount of return flows, averaged over the two years of greatest use within the most recent five-year period of continuous beneficial use of the water right.²

The beneficial use analysis provides an assessment of the water use associated with Dillard Jensen's irrigation water right. The analysis focuses on the examination of records from the most recent five years of continuous beneficial use (2006-2010) to estimate the Q_a and Q_i associated with the water right that may be available for mitigation use by the cities. The following analysis provides an estimate of the consumptive beneficial use that was authorized under S2-00972CWRIS.

Instantaneous Quantity (Q_i)

This section provides an estimate of the instantaneous rate of water withdrawal for the Jensen water right. The certificate issued allows for an instantaneous rate of 0.50 cubic feet per second (cfs). The following equation is used to estimate the physical capacity of the pumps:

$$Q_i = (HP \times 3956 \times \text{Pump Efficiency}) / TDH$$

For this analysis, it is assumed that:

- The depth to water during pumping averages 20 feet as determined from field visits and GIS elevation maps.
- The water was provided at a pressure of 60 psi.
- The current pump and motor system are factored at 75 horsepower (HP).
- Pump efficiency is estimated to be 70%.
- Friction losses along the transmission pipe were factored at 52.68 feet.³

² RCW 90.03.380

³ friction losses = $10.44 * (\text{Length, ft}) (Q, \text{gpm})^{1.85} / (C\text{-factor})^{1.85} * (\text{Diam, inches})^4$ 8655

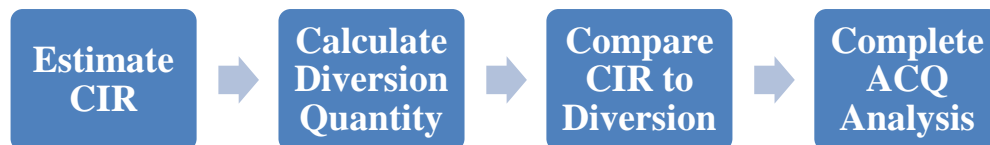
- Total Dynamic head (TDH) is estimated to be 251.28 feet. (251.28 ft = 40 ft static head + 20ft. lift + 52.68 ft. friction loss + (2.31 x 60 psi)).

Based on these assumptions, the physical pumping capacity is 826.54 gpm, or 1.84 cfs. The estimated Q_i based on the system capacity exceeds the Q_i allowed by the water right by approximately 1.34 cfs. The estimated Q_i is highly sensitive to assumptions regarding TDH and other factors that can affect actual Q_i , but this estimate suggests that the system in place for irrigating the POU for the Jensen water right has more than enough capacity to fully irrigate at a rate of 0.50 cfs throughout the duration of the irrigation season.

Consumptive Use and Diversion Requirements (Q_a)

When a new use is added to an existing water right, Washington State law stipulates that a change in the place of use, point of diversion, and/or purpose of use of a water right may be permitted if the change causes no increase in the annual consumptive quantity (ACQ) of water used under the water right. Furthermore, based on discussions with WDOE staff any water rights being permanently donated to the Trust Water Rights program or formally cancelled for purposes of mitigation shall be calculated based on the consumptive quantity of the water rights over the last five years of use. Therefore, the cities' intended use of this water right for mitigation is subject to an ACQ analysis. **Figure 12** outlines the general steps applied to complete the ACQ analysis.

Figure 12: Steps to Complete the ACQ Analysis



The following sections provide calculations to determine the CIR and diversion quantity associated with the permitted portion of S2-00972CWRIS. **Table 5** includes summaries of both the permitted and un-permitted ACQ figures.

Estimate of Crop Irrigation Requirement (CIR)

The Washington Irrigation Guide (WIG) provides estimates of the crop irrigation requirement (CIR) associated with specific crop-types throughout the State of Washington. CIR is measured in inches per acre and is a component in the estimation of the ACQ associated with a water right. CIR, or how much the crop consumes through irrigation, added to the amount of water lost through evaporation in the irrigation process equals the ACQ of a water right

(ACQ = CIR + % Evaporation). The WIG includes estimates of CIR for the Olympia area.⁴ The estimated CIR for pasture in the Olympia area is 16.47 inches per acre annually (Column A) as shown in **Table 4**. Column B is calculated by dividing Column A by 12 to convert to AF/Acre.

Table 4: Crop Irrigation Requirements

Month	Column A	Column B	Column C
	Crop Irrigation Required (in/ac)	Crop Irrigation Required (AF/ac)	Total Farm Crop Irrigation Required (AF)
January	0.00	0.00	0.00
February	0.00	0.00	0.00
March	0.00	0.00	0.00
April	0.53	0.04	2.21
May	2.36	0.20	9.83
June	3.35	0.28	13.96
July	4.97	0.41	20.71
August	3.45	0.29	14.38
September	1.81	0.15	7.54
October	0.00	0.00	0.00
November	0.00	0.00	0.00
December	0.00	0.00	0.00
Total	16.47	1.37	68.63

Adjustments to the CIR and Diversion Quantity

Because the Jensen water right has stream flow and seasonal usage (i.e., withdrawals limited to May 1 through September 15) restrictions, the standard CIR figures need to be adjusted to reflect the restrictions.

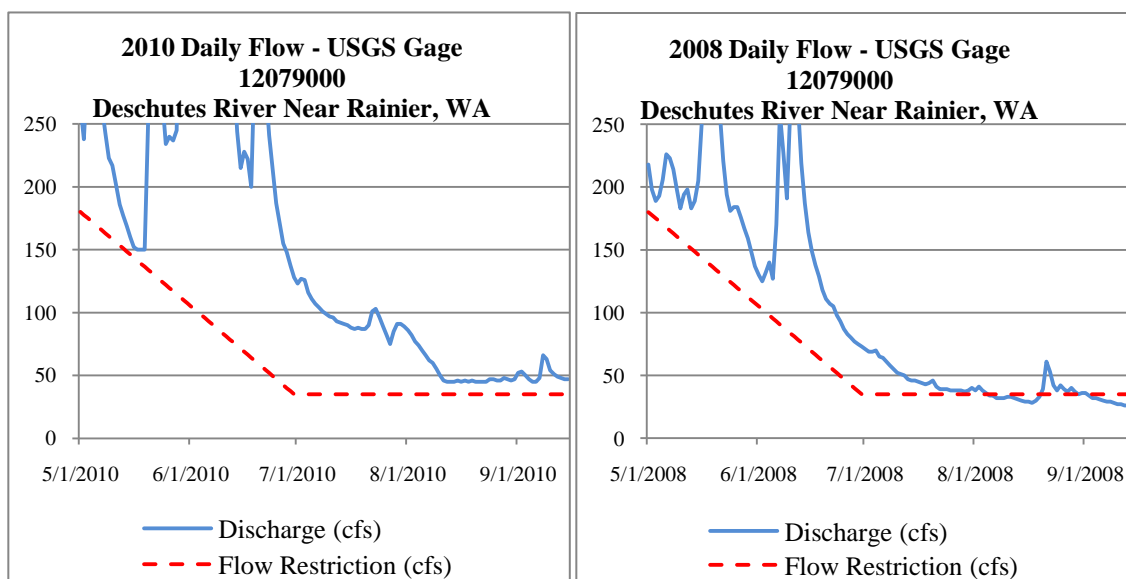
Stream flow restrictions were accounted for using daily flow data collected at USGS Gage 12079000 on the Deschutes River, near Rainier, WA. At certain times between May 1–Sept 15, flows of the river (cfs) are much greater than the Jensen water right restriction, and when this is the case Mr. Jensen is allowed to pump. At other times the river flows are much lower than the certificated limit and pumping is not allowed.

Figure 13 shows daily discharge from May 1 – Sept 15 for 2008 and 2010. In the case of 2010, the flows of the river (blue line) never fell below the minimum flow standard set in the water right (red line). Consequently, the full CIR would be applied. In other years between 2006-2009 (see Appendix C), the river discharge on certain days was less than the minimum

⁴ The WIG includes terminology similar to GUID-1210 and refers to the amount of water a crop consumes from irrigation as the Net Irrigation Requirement (NIR). This report will use the term CIR to mean either CIR or NIR.

flow standard. On those days irrigation would not have been permitted. A review of the graphs in Appendix C reveals that, of the years 2006 – 2009, the 2008 season contained the least number of days when irrigation would not have been permitted. Thus, 2008 was selected as the 2nd highest use year within the past five years and is averaged with 2010 in this analysis.

Figure 13: Daily Flow Data



To account for seasonal use restrictions, the CIR was adjusted to exclude periods that were not authorized under the water right. Consequently, the April CIR was excluded and the September CIR was prorated to include only the first 15 days. This in turn was adjusted for flow restrictions, when applicable.

After accounting for flow restrictions (when applicable) and seasonal use restrictions identified in the water right, **Table 5** displays the adjusted annual CIR values for the last five years of continuous use. Using the adjusted 2008 and 2010 CIR values as the highest two years of diversion, the average adjusted CIR is 13.98 inches/acre, or 1.165 acre-feet/acre, and will be used for the ACQ calculations.

Table 5: Adjusted Crop Irrigation Requirement 2006-2010

	2006 (in/ac)	2007 (in/ac)	2008 (in/ac)	2009 (in/ac)	2010 (in/ac)
May	0.23	0.00	2.36	1.90	2.36
June	3.24	1.01	3.35	1.34	3.35
July	4.17	4.97	4.97	2.57	4.97
August	0.11	2.78	2.12	0.11	3.45
September	0.00	0.00	0.12	0.36	0.91
Adj. Annual CIR	7.75	8.76	12.92	6.28	15.04

Consumptive Use Calculation

The purpose of this section is to provide an estimate of the ACQ to determine the quantity available to the cities from the Jensen water right. The analysis follows ACQ estimation procedures described in Ecology's GUID-1210. Specifically, this analysis focuses only on consumptive use associated with a crop's irrigation requirement (CIR)⁵ and losses from spray, wind, and canopy evaporation, also known as evaporative losses (%Evap). Therefore, ACQ is equal to CIR + %Evap.

For the purpose of this analysis, we assume the following

- The estimated on-farm application efficiency is 65 percent (big gun).
- The %Evap coefficient is 10 percent for big gun.

Table 6 calculates the ACQ based on the assumptions provided above. The following provides a summary of calculations performed for each column listed in the table:

- **Column A:** The average adjusted CIR (13.98 inches/acre) was converted to AF per acre. Calculation performed: Average adjusted CIR ÷ 12
- **Column B:** Monthly diversion quantities are estimated based on the assumed big gun application efficiency and the CIR. Calculation performed: Column A ÷ 65 percent EA.
- **Column C:** The EA consumed reflects the portion of irrigation efficiency that is consumptively used through evaporation that is in addition to the CIR. %Evaporated water consumed is based on the EA coefficient of 10 percent and the total diversion quantity. Calculation performed: Column B x 10 percent.
- **Column D:** Total consumptive use is the sum of the CIR and EA and is reported as AF per acre. Calculation performed: Column A + Column C
- **Column E:** Total farm ACQ use estimates the total consumptive use for authorized acres in the water right. Calculation performed: Column D x 50 acres.

Table 6: Jensen Water Right Authorized Total Consumptive Use Estimate for Pasture

	Column A	Column B	Column C	Column D	Column E
	CIR (AF/Acre)	Diversion Quantity (AF/Acre)	%Evap Water Consumed (AF/Acre)	Total Consumptive Use (AF/Acre)	Total Farm Consumptive Use (AF)
Permitted (50 ac)	1.165	1.792	0.179	1.344	67.21

⁵ Water Resources Program Guidance Memo (GUID-1210) defines the Crop Irrigation Requirement as, "water supplied by irrigation to satisfy evapo-transpiration that is not provided by water stored in the soil and precipitation."

Additional Consumptive Use

Aerial photos indicate that a total of 104 acres was irrigated on the Jensen farm. Of the 54 acres not authorized under the Jensen water right, the calculated consumptive use based on an average adjusted CIR of 1.165 AF/acre would be 72.19 AFY. Because this estimate is based on flow limitations used for calculating the consumptive use authorized under the Jensen water right, it is likely that up to 139.40 AFY was consumptively used on the Jensen farm in the last five years of continuous use. However, it is recognized that the quantity available to the cities for mitigation purposes will be limited to use that was authorized under the water right.

Future Use of Farm

The Jensen's have indicated that upon the sale of water right S2-00972WRIS to the cities, the river diversion will be removed and farming operations will rely exclusively on dairy waste for irrigation of pasture on the farm.

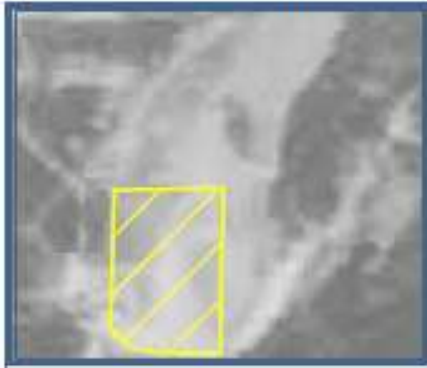
Summary and Conclusion

Based on WestWater's evaluation of the Jensen water right and the supporting data and information presented in this report, it is WestWater's opinion that:

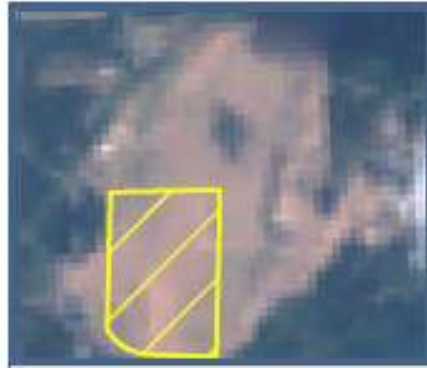
1. The water right has been continuously used for irrigating 50 permitted acres of pasture since the certificate was issued. Another 54 acres of un-permitted pasture have also been irrigated with river water
2. The primary method of irrigation is big gun sprinkler irrigation.
3. The Deschutes River is the source of the irrigation water for the majority of the irrigation season, except when low river flows disallow pumping.
4. The ACQ estimate of 67.21 AF represents a reasonable approximation for quantifying the consumptive use on the 50 permitted acres of Mr. Jensen's pasture. Furthermore, the ACQ of 72.19 AF for the additional 54 acres of irrigated pasture is included to illustrate true withdrawal from the River and should be considered in the overall context of the cities' mitigation proposals.
5. Based on the CIR for pasture in the Olympia area, estimates for conveyance and irrigation efficiencies, and estimated total ACQ, the full quantity of 100 AF is consumed by the crop. However, when the CIR is adjusted for unpermitted portion is taken out, a minimum of 67.21 AF would likely be available for mitigation.

Appendices: A-D

July 26, 1981 (NHAP)



September 11, 1986 (LANDSAT)



July 31, 1991 (NAPP)



August 29, 1993 (LANDSAT)



June 1996 (Thurston County)



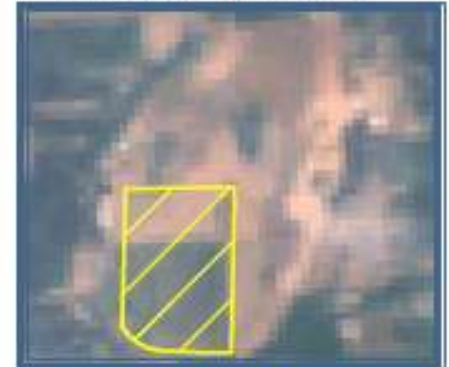
June 2000 (Thurston County)



July 21, 2002 (LANDSAT)



July 24, 2003 (LANDSAT)



2004 (NAIP)



2005 (NAIP)



2006 (NAIP)



2009 (NAIP)



Appendix B: The Distribution System

Figure 5: Water Pump—Power Source (NEW)



This pump engine has been the power source for pumping the irrigation water since the mid-1980s according to the landowners. The engine is a 6-cylinder diesel producing about 75 horse power.

Figure 6: Water Pump—Power Source (OLD)



An old pump used until the mid-1980s to pump water from the river.

Figure 7: The Big Gun Irrigation System



The big-gun irrigation system has a 2-inch nozzle.

Figure 8: Irrigating the Property



Proof of Harvest

Figure 9: Hay Barn and 2010 Harvested Grass Bales



A hay barn was built in 1992 to house grass bales and a few pieces of equipment.

Figure 10: 2010 Harvested Grass Bales



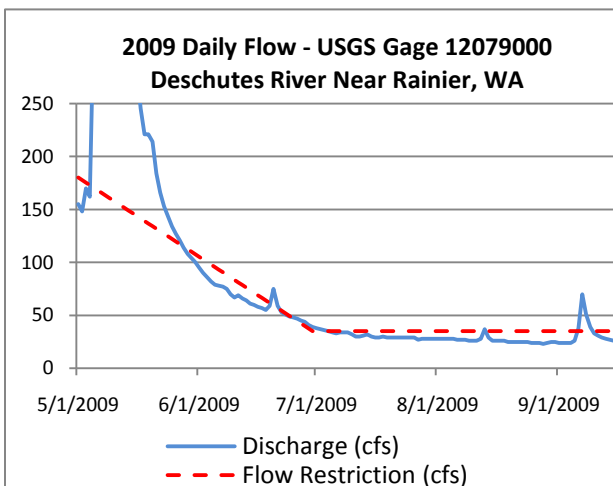
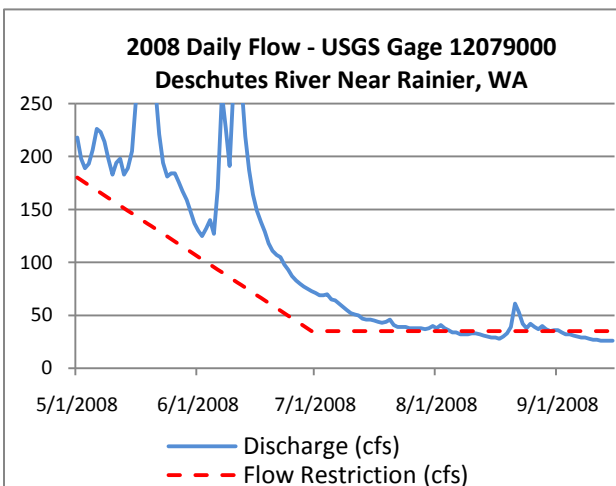
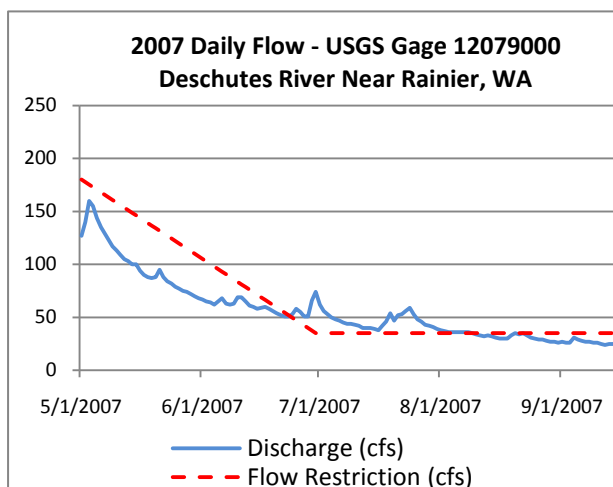
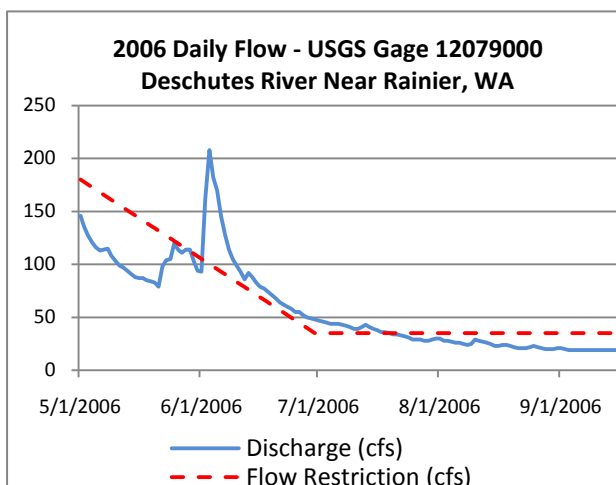
Round bales grown on the property are wrapped and stored for winter forage.

Figure 11: Irrigated Pasture



The irrigated portion of the property, looking west across the field, also serves as fall pasture ground for cows.

Appendix C: Historical Flow Data USGS Gage 12079000 Deschutes River near Rainier, WA



Appendix D: Jensen Water Right File

STATE OF WASHINGTON
DEPARTMENT OF ECOLOGY

CERTIFICATE OF WATER RIGHT

- ☒ Surface Water (Issued in accordance with the provisions of Chapter 117, Laws of Washington for 1917, and amendments thereto, and the rules and regulations of the Department of Ecology.)
- ☐ Ground Water (Issued in accordance with the provisions of Chapter 263, Laws of Washington for 1945, and amendments thereto, and the rules and regulations of the Department of Ecology.)

PRIORITY DATE January 18, 1971	APPLICATION NUMBER 22816	PERMIT NUMBER S. 2-00972 P	CERTIFICATE NUMBER S 2-00972 C
-----------------------------------	-----------------------------	-------------------------------	-----------------------------------

NAME DILLARD JENSEN	(CITY) Yelm	(STATE) Washington	(ZIP CODE) 98597
ADDRESS (STREET) Rt. 1 Box 1578			

This is to certify that the herein named applicant has made proof to the satisfaction of the Department of Ecology of a right to the use of the public waters of the State of Washington as herein defined, and under and specifically subject to the provisions contained in the Permit issued by the Department of Ecology, and that said right to the use of said waters has been perfected in accordance with the laws of the State of Washington, and is hereby confirmed by the Department of Ecology and entered of record as shown.

PUBLIC WATER TO BE APPROPRIATED

SOURCE Deschutes River		
TRIBUTARY OF (IF SURFACE WATERS) Budd Inlet		
MAXIMUM CUBIC FEET PER SECOND 0.50	MAXIMUM GALLONS PER MINUTE	MAXIMUM ACRE-FEET PER YEAR 100
QUANTITY, TYPE OF USE, PERIOD OF USE 100 acre-feet per year irrigation of 50 acres May 1 to September 15 each year		

LOCATION OF DIVERSION/WITHDRAWAL

APPROXIMATE LOCATION OF DIVERSION-WITHDRAWAL 1000 feet east and 1000 feet south from the north quarter corner of Section 34.

LOCATED WITHIN (SMALLEST LEGAL SUBDIVISION) NONE	SECTION 34	TOWNSHIP N. 16	RANGE, (E. OR W.) W.M. 2 E	W.R.I.A. 13	COUNTY Thurston
RECORDED PLATTED PROPERTY					
LOT	BLOCK	OF (GIVE NAME OF PLAT OR ADDITION)			
LEGAL DESCRIPTION OF PROPERTY ON WHICH WATER IS TO BE USED					

NONE, Section 34 lying northerly and easterly of Neat Road and easterly of Smith Prairie Road and S $\frac{1}{2}$ SE $\frac{1}{4}$ Section 27; ALL in T. 16 N., R. 2 E.W.M.

(SEE REVERSE SIDE)

CERTIFICATE

PROVISIONS

All diversion shall cease when the flow of Deschutes River falls below 180 cubic feet per second on May 1 with a linear decrease to 35 cubic feet per second on June 30 and 35 cfs from June 30 to September 15 as measured at the United States Geological Survey Gaging station located near Rainier. This flow has been tentatively established from recommendation of the Department of Fisheries and Game and not by existing statutory procedures. Therefore, at such time as flows are established on this stream in accordance with Chapter 90.22 RCW or Chapter 90.54 RCW, this permit shall be conditioned to the extent of the new setting, provided that under no conditions shall the permittee be subject to a flow requirement of greater than the flow specified above.

Diversion intake shall be tightly screened at all times with wire mesh having openings with dimensions not greater than .125 (1/8) inch. Water approach velocity to the screen shall be less than 1 foot per second and approaching 0.5 foot per second, as measured one foot in front of the screen.

The Water Resources Act of 1971 specifies certain criteria regarding utilization and management of the waters of the State in the best public interest. Issuance of this certificate was based on sufficient waters available, at least during portions of the year. However, it is pointed out to the certificate holder that his use of the water may be subject to regulation at certain times, based on the necessity to maintain water quantities sufficient for preservation of the natural environment.

The right to the use of the water aforesaid hereby confirmed is restricted to the lands or place of use herein described, except as provided in RCW 90.03.380, 90.03.390, and 90.44.020.

This certificate of water right is specifically subject to relinquishment for nonuse of water as provided in RCW 90.14.180.

Given under my hand and the seal of this office at Olympia, Washington, this 29th day of September, 1978.

WILBUR G. HALLAUER, DIRECTOR
Department of Ecology

ENGINEERING DATA

OK *RAC*

by *E.W. Asselstine*
E.W. ASSELSTINE, Regional Manager

FOR COUNTY USE ONLY

STATE OF WASHINGTON
DEPARTMENT OF ECOLOGY

PROOF OF APPROPRIATION OF WATER

APPLICATION NUMBER 22-816		PERMIT NUMBER 200972	
NAME OF PERMITTEE Dillard Jensen			
POST OFFICE ADDRESS Rt 1 Box 1578		(CITY) Yelm, Wa.	(ZIP CODE) 98597
ACTUAL SOURCE OF APPROPRIATION Deschutes River			
PURPOSE OR PURPOSES WATER IS USED FOR Irrigation of 50 acres			
DATE WATER WAS COMPLETELY APPLIED TO PERMITTED USE July 1977		IF USED FOR IRRIGATION: NUMBER OF ACRES ACTUALLY IRRIGATED 50	
IF SOURCE IS A WELL, IS AN ACCESS PORT NOW INSTALLED <input type="checkbox"/> YES <input checked="" type="checkbox"/> NO		MONTHS DURING WHICH WATER IS USED May 1 to Sept 15 each year	
PUMP SIZE			
ACTUAL AMOUNT WITHDRAWN OR DIVERTED FROM PERMANENT SYSTEM .50			
HAVE ALL PROVISIONS AS REQUIRED BY PERMIT BEEN ACCOMPLISHED <input checked="" type="checkbox"/> YES <input type="checkbox"/> NO		IF NO, EXPLAIN	

LEGAL DESCRIPTION OF PROPERTY ON WHICH WATER IS USED (USE ADDITIONAL SHEET IF NECESSARY)

NE 1/4 NE 1/4, section 34 lying northerly and easterly of Mead Road and easterly of Smith Prairie Road and 1/2 SE 1/4 SE 1/4 section 27; all in T.16 N., R.2 E.W.M.

STATE OF WASHINGTON,

County of **Thurston** ss.

I, **Dillard Jensen**, being first duly sworn, depose and say that I have read the above and foregoing proof of appropriation; that I know the contents thereof; and that the facts therein stated are true.

IN WITNESS WHEREOF, I have hereunto set my hand this **1st** day of **August**, 19 **78**.

Dillard Jensen
Permitter Signature

Subscribed and sworn to before me this **1st** day of **August**, 19 **78**.

OK for certificate issue as permitted except change legal to above description.
ECY 040-1-200

Richard L. Carter
Notary Public
Dept of Ecology
S.W. Regional Office

P/A

September 29, 1978

State of
Washington
Department
of Ecology



County Auditor
THURSTON County
Olympia, WA 98501

Dear Sir:

Enclosed is Certificate of Water Right No. 2-00972 C and
a check or money order in the amount of \$ 4.00 to cover
the cost of recording in your office.

When this has been done, please forward the certificate to:

Dillard Jansen
Rt. 1 Box 1578
Yelm, WA 98597

Sincerely,

E. W. Asselstine

E. W. Asselstine
Regional Manager

WASHINGTON STATE DEPARTMENT OF ECOLOGY				RECEIPT No. 83235
RECEIVED FROM <i>Dillard C. Jansen - Yelm</i>				8-2 10/28
<i>4.00</i>				Dollars <i>5.00</i>
FUND:	General <input checked="" type="checkbox"/>	Rec. Rev. <input type="checkbox"/>	Basic Data <input type="checkbox"/>	Other <input type="checkbox"/>
SOURCE:	Water Code <input checked="" type="checkbox"/>	Publications <input type="checkbox"/>	Adjudications <input type="checkbox"/>	Refunds <input type="checkbox"/>
	Per. and Lic. <input type="checkbox"/>	Investments <input type="checkbox"/>	Registration <input type="checkbox"/>	Other <input type="checkbox"/>
Certificate				
SWB 2-00972				
By <i>[Signature]</i>				
Thank You				

STATE OF WASHINGTON
DEPARTMENT OF ECOLOGY

PERMIT
TO APPROPRIATE PUBLIC WATERS OF THE STATE OF WASHINGTON

☒ SURFACE WATER

☐ GROUND WATER

PERMIT NUMBER S2-00972p	APPLICATION NUMBER 22816	PRIORITY DATE January 18, 1971
-----------------------------------	------------------------------------	--

NAME DELLARD JENSEN	(CITY) Yelm	(STATE) Washington	(ZIP CODE) 98597
ADDRESS (STREET) Rt 3 Box 306			

The applicant is, pursuant to the Report of Examination which has been accepted by the applicant, hereby granted a permit to appropriate the following described public waters of the State of Washington, subject to existing rights and to the limitations and provisions set out herein.

PUBLIC WATER TO BE APPROPRIATED		
SOURCE Duwamish River		
TRIBUTARY OF (IF SURFACE WATERS) Ball Inlet		
MAXIMUM CUBIC FEET PER SECOND 0.50	MAXIMUM GALLONS PER MINUTE	MAXIMUM ACRE-FEET PER YEAR 100
QUANTITY, TYPE OF USE, PERIOD OF USE 100 acre-feet per year Irrigation of 50 acres May 1 to September 15 each year		

LOCATION OF DIVERSION/WITHDRAWAL	
APPROXIMATE LOCATION OF DIVERSION/WITHDRAWAL 1000 feet east and 1000 feet south from the north quarter corner of Sec. 34	

LOCATED WITHIN (SMALLEST LEGAL SUBDIVISION) None	SECTION 34	TOWNSHIP N. 16	RANGE, 1E. OR W.1 W.N. 2 E	W.R.I.A. 13	COUNTY Thurston
--	----------------------	--------------------------	--------------------------------------	-----------------------	---------------------------

RECORDED PLATTED PROPERTY		
LOT	BLOCK	OF (GIVE NAME OF PLAT OR ADDITION)
LEGAL DESCRIPTION OF PROPERTY WATER TO BE USED ON		

~~Sec. 27; AND that part of the NE 1/4, Sec. 34 lying northerly and easterly of Neat Road and easterly of Smith Prairie Road; ALL in T. 16 N., R. 2 E.W.M.~~

pumped directly from river to sprinkler system

DEVELOPMENT SCHEDULE		
BEGINNING DATE	COMPLETION DATE	DATE COMPLETE APPLICATION OF WATER TO BE MADE
May 1, 1976 5-1-77	May 1, 1977	May 1, 1978 5-1-79

PROVISIONS

All diversion shall cease when the flow of Deschutes River falls below 180 cubic feet per second on May 1 with a linear decrease to 35 cubic feet per second on June 30 and 35 cubic feet per second from June 30 to September 15 as measured at the United States Geological Survey gaging station located near Rainier. This flow has been tentatively established from recommendations of the Departments of Fisheries and Game and not by existing statutory procedures. Therefore, at such time as flows are established on this stream in accordance with Chapter 90.22 RCW or Chapter 90.54 RCW, this permit shall be conditioned to the extent of the new setting, provided that under no conditions shall the permittee be subject to a flow requirement of greater than the flow specified above.

Diversion intake shall be tightly screened at all times with wire mesh having openings with dimensions not greater than .125 (1/8) inch. Water approach velocity to the screen shall be less than 1 foot per second and approaching 0.5 foot per second, as measured one foot in front of the screen.

The Water Resources Act of 1971 specifies certain criteria regarding utilization and management of the waters of the State in the best public interest. Issuance of this permit was based on sufficient waters available, at least during portions of the year. However, it is pointed out to the permittee that his use of the water may be subject to regulation at certain times, based on the necessity to maintain water quantities sufficient for preservation of the natural environment.

This permit shall be subject to cancellation should the permittee fail to comply with the above development schedule and/or fail to give notice to the Department of Ecology on forms provided by that Department documenting such compliance.

Given under my hand and the seal of this office at Olympia, Washington, this13th..... day
ofJune....., 19.....75....

JOHN A. BIGGS, Director
Department of Ecology

ENGINEERING DATA

OK

by
R. Jerry Hollen
Assistant Director

STATE OF WASHINGTON
DEPARTMENT OF ECOLOGY

CONSTRUCTION NOTICE

- ☐ BEGINNING OF CONSTRUCTION
☐ COMPLETION OF CONSTRUCTION

NAME <u>Dillard Jensen</u>		SURFACE WATER PERMIT NO. <u>52-00972</u>	GROUND WATER PERMIT NO.
DATE CONSTRUCTION BEGAN <u>Not Started</u>		DATE CONSTRUCTION COMPLETED	DATE COMPLETION EXPECTED
IF CONSTRUCTION NOT COMPLETE, SHOW % COMPLETED AS OF THIS DATE			
% EQUIPMENT IN PLACE	% MATERIAL IN PLACE	% EXCAVATED	% STRUCTURE
IF CONSTRUCTION HAS BEEN ABANDONED			
DATE ABANDONED		REASON ABANDONED	
REMARKS OR ANY ADDITIONAL INFORMATION WHICH MAY TEND TO SHOW GOOD FAITH IN THE PROSECUTION OF THE WORK			

The project has not been started to date.
However, a 7 1/2 horsepower single phase pump has
been purchased. It is anticipated that construction
will begin this summer.

Please authorize a 1 year extension

I, the holder of the above indicated permit issued by the Department of Ecology for the State of Washington, in accordance with the terms of such permit and the limitations endorsed thereon by the Department of Ecology, have ☐ begun ☒ completed the actual construction of the works described therein as shown.

IN WITNESS WHEREOF, I have hereunto set my hand this 15 day of June, 19 76.

Richard C. Jensen
SIGNATURE OF APPLICANT

RT 1 Box 1378 Selma WA
PRESENT ADDRESS

OK FOR 1 YEAR EXT. ON B.C.

WASHINGTON STATE DEPARTMENT OF ECOLOGY		RECEIPT NO. 61235
RECEIVED FROM <u>Dillard C. Jensen</u>		<u>6.18</u> 19 <u>76</u>
<u>for no/12</u>		DOLLARS <u>10.00</u>
FUND:	General	Rec. Rev.
SOURCE:	Water Code	Publications
	Per. and Lic.	Investments
		Adjudications
		Registration
		Refunds
		Other
		Cash
		Check
		M.O.
By <u>Dillard C. Jensen</u>		Thank You

CONSTRUCTION NOTICE

NAME <u>DILLARD JENSEN</u>	SURFACE WATER PERMIT NO. <u>52-00977</u>	GROUND WATER PERMIT NO.
DATE CONSTRUCTION BEGAN <u>Fall 1977</u>	DATE CONSTRUCTION COMPLETED <u>Fall 1976</u>	DATE COMPLETION EXPECTED

IF CONSTRUCTION NOT COMPLETE, SHOW % COMPLETED AS OF THIS DATE

IF CONSTRUCTION NOT COMPLETE, SHOW % COMPLETED			
% EQUIPMENT IN PLACE	% MATERIAL IN PLACE	% EXCAVATED	% STRUCTURE
100	100	100	100

IF CONSTRUCTION HAS BEEN ABANDONED

DATE ABANDONED

REASON ABANDONED

REMARKS OR ANY ADDITIONAL INFORMATION WHICH MAY TEND TO SHOW GOOD FAITH IN THE PROSECUTION OF THE WORK

IN WITNESS WHEREOF, I have hereunto set my hand this 20th day of July, 1972

Michael J. Larsen
SIGNATURE OF APPLICANT

RT1 Box 1578 Yelm WA
PRESENT ADDRESS

Acknowledge CC
forward PA
Request fee
6/20/77

ECY 040-1-30

CONSTRUCTION NOTICE

STATE OF WASHINGTON
DEPARTMENT OF ECOLOGY

REPORT OF EXAMINATION
TO APPROPRIATE PUBLIC WATERS OF THE STATE OF WASHINGTON

☒ SURFACE WATER

☐ GROUND WATER

APPLICATION NO. 22816	PRIORITY DATE OF APPLICATION January 18, 1971
--------------------------	--

NAME DILLARD, JENSEN	(CITY) Yelm	(STATE) Washington	(ZIP CODE) 98597
ADDRESS (STREET) Rt 1 Box 306			

PUBLIC WATERS TO BE APPROPRIATED

SOURCE Deschutes River		
TRIBUTARY OF (IF SURFACE WATERS) Budd Inlet		
MAXIMUM CUBIC FEET PER SECOND 0.50	MAXIMUM GALLONS PER MINUTE	MAXIMUM ACRE-FEET PER YEAR 100
QUANTITY, TYPE OF USE, PERIOD OF USE 100 acre-foot per year Irrigation of 50 acres May 1 to September 15 each year		

LOCATION OF DIVERSION/WITHDRAWAL

APPROXIMATE LOCATION OF DIVERSION/WITHDRAWAL
1000 feet east and 1000 feet south from the north quarter corner of Sec. 34

LOCATED WITHIN (SMALLEST LEGAL SUBDIVISION) R-100	SECTION 34	TOWNSHIP N. 16	RANGE, 1E. OR W.1.W.M. 2 E	W.R.I.A. 13	COUNTY Thurston
--	---------------	-------------------	-------------------------------	----------------	--------------------

RECORDED PLATTED PROPERTY

LOT	BLOCK	OF (GIVE NAME OF PLAT OR ADDITION)
-----	-------	------------------------------------

LEGAL DESCRIPTION OF PROPERTY WATER TO BE USED ON

E-354, Sec. 27; AND that part of the NE 1/4, Sec. 34 lying northerly and easterly of Neat Road and easterly of Smith Prairie Road; ALL in T. 16 N., R. 2 E.W.M.

(SEE REVERSE SIDE)

REPORT OF EXAMINATION

DESCRIPTION OF PROPOSED WORKS

pumped directly from river to sprinkler system

DEVELOPMENT SCHEDULE

BEGINNING DATE	COMPLETION DATE	DATE COMPLETE APPLICATION OF WATER TO BE MADE
May 1, 1976	May 1, 1977	May 1, 1978

PROVISIONS AND RECOMMENDATIONS

All diversion shall cease when the flow of Deschutes River falls below 180 cubic feet per second on May 1 with a linear decrease to 35 cubic feet per second on June 30 and 35 cubic feet per second from June 30 to September 15 as measured at the United States Geological Survey Gaging station located near Rainier. This flow has been tentatively established from recommendations of the Departments of Fisheries and Game and not by existing statutory procedures. Therefore, at such time as flows are established on this stream in accordance with Chapter 90.22 RCW or Chapter 90.54 RCW, this permit shall be conditioned to the extent of the new setting, provided that under no conditions shall the permittee be subjected to a flow requirement of greater than the flow specified above.

In accordance with the recommendations of the Departments of Fisheries and Game, the permit shall be issued subject to the following provision: "Diversion intake shall be tightly screened at all times with wire mesh having openings with dimensions not greater than .125 (1/8) inch. Water approach velocity to the screen shall be less than 1 foot per second and approaching 0.5 feet per second, as measured one foot in front of the screen."

It is recommended that this application be approved for 0.50 cubic foot per second and 100 acre-feet per year for the irrigation of 50 acres from May 1 to September 15 of each year.

The Water Resources Act of 1971 specified certain criteria regarding utilization and management of the waters of the State in the best public interest. Favorable consideration of this application has been based on sufficient waters available, at least during portions of the year. However, it is pointed out to the applicant that his use of the water may be subject to regulation at certain times, based on the necessity to maintain water quantities sufficient for preservation of the natural environment.

In accordance with Section 90.03.290 RCW I find that there is water available for appropriation from the source in question and that the diversion as recommended above will not impair existing rights or be detrimental to the public welfare. Therefore, permit should issue, subject to existing rights and indicated provisions.

Signed at Olympia, Washington,
this 14th day of May, 1975.


J. L. LOUTHAIN, Regional Supervisor
Department of Ecology

State of
Washington
Department
of Ecology



May 21, 1975

Dillard Jensen
Rt 1 Box 306
Yelm, WA 98597

Dear Sir:

RE: Surface Water Application No. 22816

Enclosed is a copy of our Report of Examination for your above-numbered application.

Your application has been approved and a permit will be issued according to this report upon payment of the statutory fee of \$ 20.00. Please make your check payable to the Department of Ecology.

The enclosed report constitutes our determination and order under the referenced application. Chapter 43.21B RCW provides that any person who feels aggrieved by an order, such as the one enclosed, may appeal to the Pollution Control Hearings Board of Washington within thirty (30) days from the transmittal date of the order. A copy of regulations outlining the procedures for requesting a hearing may be obtained from this Department upon request.

Sincerely,

J. L. Louthain

J. L. LOUTHAIN
Regional Supervisor

JLLdv

Enclosure

RECEIVED

JUN 2 1975

DEPARTMENT OF ECOLOGY
SOUTHWEST REGIONAL OFFICE

OK FOR PERMIT
6-2-75 J

Affidavit of Publication

STATE OF WASHINGTON
County of Thurston



The undersigned, being first duly sworn on oath deposes and says: That she is the Principal Clerk of The Daily Olympian, which is a legal newspaper printed and published in the City of Olympia, Thurston County, Washington; of general circulation in said City, County and State; that

the NOTICE OF GROUND WATER RIGHT # 22816

_____ in the case of
DEPARTMENT OF ECOLOGY of which
the attached is a printed copy, was published in said newspaper:

On the 2nd day of March 19 71
the 9th day of March 19 71
the _____ day of _____ 19 ____;
the _____ day of _____ 19 ____;
the _____ day of _____ 19 ____;
the _____ day of _____ 19 ____;
the _____ day of _____ 19 ____;
the _____ day of _____ 19 ____;
the _____ day of _____ 19 ____;
the _____ day of _____ 19 ____;
the _____ day of _____ 19 ____;

that the said newspaper was generally circulated during all of said time, and has been published Saturday excepted, for more than six months prior to the date of the publication of this legal document, and that said notice was published in the newspaper proper, and not in supplement form.

The amount of fee charged for this publication is \$ 5.82
and that said sum has been paid in full.

Wendy Smith
Principal Clerk

Subscribed and sworn to before me this 9th

day of March 19 71

Elizabeth Smith
Notary Public in and for the State of Washington,
Residing at Olympia, Thurston County, Washington.

The Daily Olympian has been appointed as a legal newspaper by order of the Superior Court of the State of Washington for Thurston County, dated July 10, 1961, in the county in which said newspaper is published in accordance with RCW 85.16.030 and RCW 85.16.040.

NOTE - The above affidavit and fee is in compliance with RCW 85.16.030 and RCW 85.16.090.

Deschutes R.

7-6-54 Letter from Fisheries requesting closure

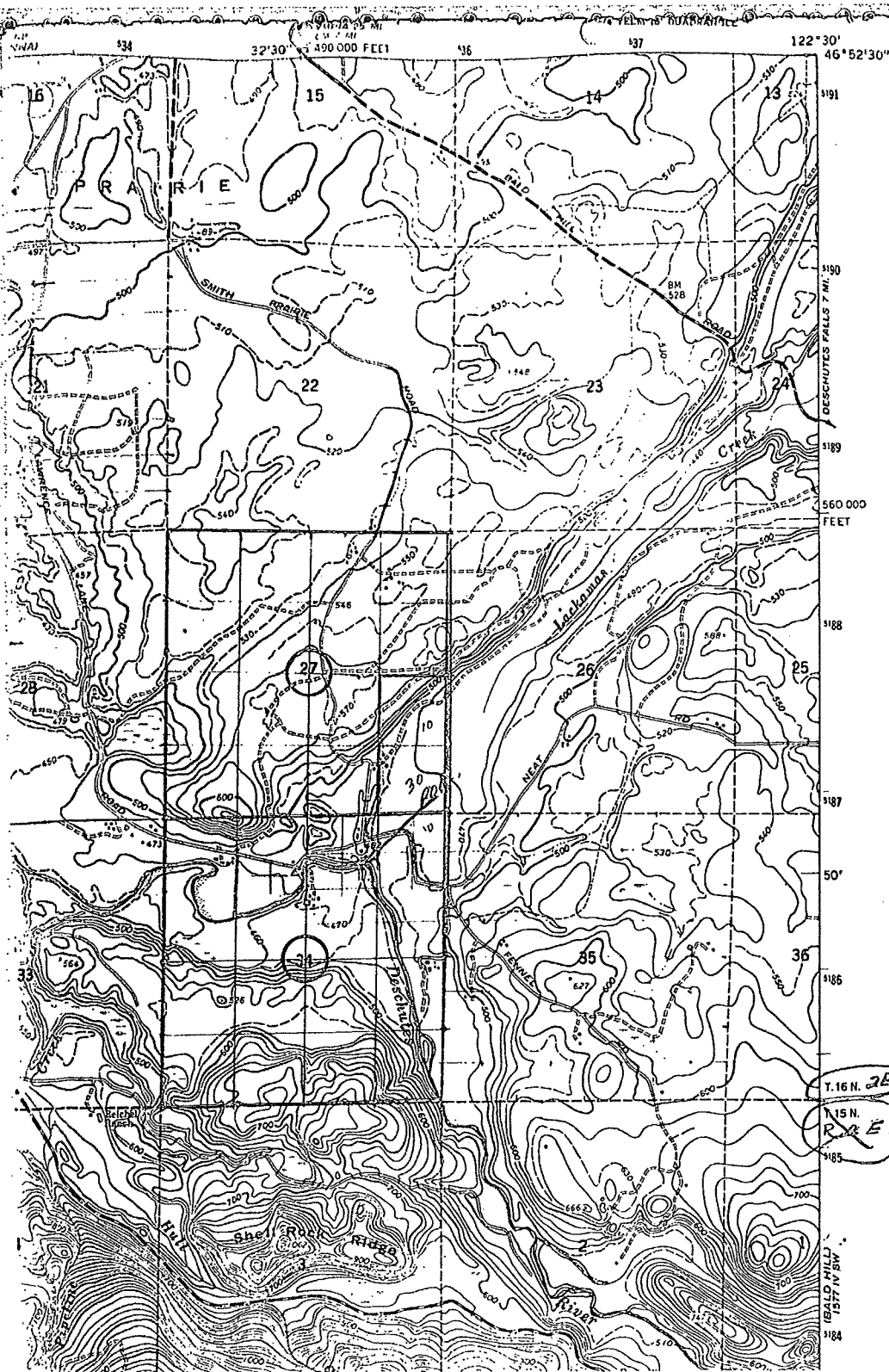
2-27-56 Letter from Fisheries saying no further objection to apps on Deschutes provided:
 1. App. for change for 100 cfs by Fisheries ^{be approved} that was portion of PSP&L right riparian right for 467 cfs.
 2. Future apps be approved w/ Lo Flow proviso of 45 cfs at USGS gage 1 mile U/s of dam Tomlinson.

June 5-1974 ^{F#6} Boc Sand & Gravel - Letter recommending approval for this app. (52-22434) w/ minimum flow @ P.O.D. in Sec 6, T12N, R1W.

Oct 15 - June 1	145 cfs	10-15 to 4-1	275 cfs
June 1 - June 15	145 cfs to 50 cfs	4-1 to 5-1	275 to 60 cfs
June 15 - Sept 5	50 cfs	5-1 to 9-5	60 cfs
Sept 5 - Oct 15	50 cfs to 145 cfs	9-5 to 10-15	60 cfs

Sept 18-1974 ^{# 10-2474} Kildow Bros - Fish letter recommending approval for this app #22272 w/ min flow of old USGS gage @ RM 3.4 in 35-18N-2W of 275 cfs & 60 cfs

Oct 1-1974 Nelson (22537) & Jensen 22814 - Fish letter rec. approval for Nelson app w/ low flow same as Kildow & Jensen app w/ low flow of 140 cfs & 50 cfs @ USGS gage @ RM 26 in Sec 22, T16N, R1E.



SW 22.816
OFFICE 3



WASHINGTON
Department of
FISHERIES

DANIEL J. EVANS
GOVERNOR

ROOM 115, GENERAL ADMINISTRATION BUILDING • PHONE 753-6000
OLYMPIA, WASHINGTON 98504

THOR C. TOLLEFSON
DIRECTOR

October 1, 1974

Department of Ecology
Southwest Regional Office
7272 Cleanwater Lane
Olympia, Washington 98504

Attention Jerry Louthain

RE:

21619, Charles A. Lindberg, 0.03 cfs - irrigation,
Capitol Lake, Sub-~~lot~~ 19, Block 4, Section 26, Town-
ship 18 North, Range 2 West.

22537 (or 11427) Robert Nelson, 0.42 cfs - irrigation,
Deschutes River, S $\frac{1}{2}$, SE $\frac{1}{4}$, Section 19, Township 17 North,
Range 1 West, W.M.

22816, Dillard Jensen, 0.5 cfs - irrigation, Deschutes
River, N $\frac{1}{2}$, NE $\frac{1}{4}$, Section 34, Township 16 North, Range 2
East, W.M.

All in WRIA - 13 Thurston County.

Gentlemen:

The Department of Fisheries does not object to granting the subject permits provided standard screening and hydraulic project approval provisions are appended and low flow provisions are also appended.

The following low flow provisions are to be appended to the ~~Lindberg~~ and Nelson permits:

October 15 to April	275 cfs
April 1 to May 1	linear decrease from 275 cfs to 60 cfs
May 1 to September 5	60 cfs
September 5 to October 15	linear increase from 60 cfs to 275 cfs

Diversion shall cease whenever discharges drop below those levels measured at the former USGS gaging station 12-0800 near Olympia at river mile 3.4 in the NW $\frac{1}{4}$, SE $\frac{1}{4}$ of Section 35, Township 18 North, Range 2 West, W.M.

Low Flows to be appended to the Jensen permit follows:

*Delete per telecon
w/ Conroy
on 11-20-74
JH*

22016

DELLAND JENSEN

2022, Washington

January 10, 1971

Registration Bureau

On 20 Feb 68

0.5 cubic feet per second

May 1 to October 31

Arrangement

1971

23

26

28

Shurston

10th

February

71

S. F. No. 1012-6-71-5M. 22197.

RECEIPT NO. 3488

WASHINGTON STATE
DEPARTMENT OF ECOLOGY

Olympia, Washington, 1-18, 1971

RECEIVED FROM Deiland Jensen, Yelton
1022 E. 10th St. DOLLARS 10.00

FUND: ☒ General ☐ Rec. Rev. ☐ Basic Data ☐ Other ☐ Cash
SOURCE: ☒ Water Code ☐ Publications ☐ Adjudications ☐ Refunds ☒ Check
☐ Per. and Lic. ☐ Investments ☐ Registration ☐ Other ☐ M. O.

S. W. expand fee

By Eleanor Rodgers
Thank You

STATE OF WASHINGTON
DEPARTMENT OF ECOLOGY
OLYMPIA, WASHINGTON

Please send \$10.00 minimum
statutory examination fee with
application.

PRIORITY
Date <u>1-18-71</u>
Time <u>01:00</u>
Accepted <u>16</u>

Application No.

22816

APPLICATION FOR A PERMIT

To Appropriate Public Surface Waters of the State of Washington

(Note: Gray boxes are for office use only)
(Read instruction sheet before filling out this form.)

I, DILLARD JENSEN
(Name of applicant)

If the applicant is a corporation, give date and place of incorporation

of YELM W N
(Complete postoffice address)

do hereby make application for a permit to appropriate the following described public waters of the
State of Washington subject to existing rights:

1. The source of the proposed appropriation is DISCHUTES RIVER
(Name of source stream, lake, river, spring, etc.; if unnamed so state)
tributary of PUGET SOUND

Dischutes River, tributary of Budd Inlet

2. The amount of water which the applicant intends to apply to beneficial use is 0.5 (225 gpm)
cubic feet per second; _____ acre-feet per year.

3. The use to which the water is to be applied is Irrigation

(Irrigation, power, mining, manufacturing, domestic supply, etc.)

4. Time during which water will be required each year MAY 15 to Sept 15
MAY 1 to Oct 31

5. The approximate point of diversion is located 1/2 mile S from
N 1/2 Sec 34

(Give measured distance and bearing, or north-south and east-west distances from nearest section or subsection corner)

being within the N 1/2 NE 1/4 Sec. 34, Tp. 16 N., R. 2 (E. or ~~W.~~) W.M.,
(Give smallest legal subdivision)

in the county of THURSTON
(Accurately mark and identify each point of diversion on the maps or plats submitted with this application.)

To be
certified
by
state
engineer

WORK SCHEDULE

- (a) Construction work will begin on or before MAY 27 1976
 (b) Construction work will be completed on or before 1977
 (c) Water will be put to complete beneficial use on or before 1978

7. Is the source from which you wish to appropriate water on the tract of land on which the water is to be used? YES NO (Applicant owns River Frontage)

8. DESCRIPTION OF WORKS:

- (a) Nature of works: (Reservoir, dam, ditch, flume, pumping plant, etc.)

Pumped Directly from River

- (b) Dimensions of works:

Dam: Height _____ feet; length at bottom _____ feet; length at top _____ feet; thickness at bottom _____ feet; thickness at top _____ feet; slope at front water face _____; slope at back face _____; material used in construction _____

Reservoir: Capacity when filled _____ acre-feet. Surface area at highwater mark _____ acres.

If 10 acre-feet or more of water is to be stored and/or if the water depth will be 10 feet or more at the deepest point, a storage permit must be filed in addition to the above. These forms can be secured, together with instructions, by addressing the Department of Ecology, Olympia, Washington.

- (c) Description of Ditch or Pipeline System _____

9. IRRIGATION: Number of acres to be irrigated 50

If you are an S.C.S. cooperator, please include a tracing of your farm plan map with this application.

10. MUNICIPAL WATER SUPPLY:

To supply the city of _____, having a present population of _____ and an estimated population of _____ in 19 _____

- (a) Estimated present requirement _____

11. MULTIPLE DOMESTIC WATER SUPPLY (Unincorporated Areas)

Maximum number and type of family units to be supplied from this requested appropriation _____

12. LEGAL DESCRIPTION OF PROPERTY on which water is to be used, for all purposes (Copy legal description from deed; or attach copy of deed. Tax statement descriptions are not acceptable. Also outline this property on the maps or plats submitted with this application.) _____

Do not miss
to be verified
by field agent

W¹/₄ SW¹/₄ SEC 26

E¹/₂ SE¹/₄ Sec 27, + that part
of the N¹/₂ NE¹/₄ SEC 34 lying
northerly & easterly of the NEAT Rd. and
easterly of Smith Prairie Road, all in T. 16 N., R. 2 E. W.M.

(a) What interest do you have in the property described under Item No. 12?

OWNER
(Owner, lessee, contract purchaser)

(b) Are there any existing water rights appurtenant to the above described property? YES

If so, from what source and under what authority SW App - 21604

SW Perm 715890

13. POWER GENERATION:

(a) Total amount of power to be developed _____ H. P.
(Theoretical horsepower)

(b) Total fall to be utilized _____ feet.
(Head)

(c) The nature of the works by means of which the power is to be developed _____

(d) Such works to be located in _____ of Sec _____, Tp _____ N., Rge _____ W.M.
(Legal subdivision) (E. or W.)

(e) To what stream is the water to be returned? _____

(f) Locate point of return _____ Sec _____, Tp _____ N., Rge _____ W.M.
(E. or W.)

(g) The use to which power is to be applied is _____

14. SIGNATURES:

(SIGN HERE) _____ Address _____
(Applicant)

(SIGN HERE) Richard C. Jensen Address Rt 1 Box 306 Glenview
(Owner of Land in Item 12)

Remarks: _____

Progress Sheet—Surface Water

Dillard Jensen
Route 1, Box 295 1578
Yelm, Wa. 98597

NAME _____ Assigned to _____

Date _____

APPLI. NO. 22816 PERMIT NO. 200972 CERT. NO. C

AMENDED _____ CANCELLED _____

Application received 1-18-71 Initial \$10.00 fee received 1-18-71

Statement of additional examination fee \$ _____ Sent _____ Received _____

Returned for completion or correction _____ Received _____

Temporary permit approved by _____ Issued _____

PUBLICATION: O.K.'d by Jim Date 2-18-71 Notice sent 2-19-71

Protests _____ Filed _____

Affidavit received and checked OK HJH 3/12/71 Time expires 4-8-71

Report of game: Approved _____ Proviso waited 24 hrs Protest Armed Fish

Report of fish: Approved _____ Proviso _____ Protest _____

EXAMINATION made 8-13-71 by JLL

O.K.'d for permit 6-2-75 by J Per telecon 8/29/71 D. Sturges

Statement of permit fee sent 5-21-75 Amount \$ 20.00 Received 6-2-75

PERMIT NO. 200972 ISSUED 6-13-75

BEGINNING OF CONSTRUCTION: Notice sent 7-1-75 Filed 7-20-77

Extension fee \$ _____ Extended to 5-1-77

To _____

COMPLETION OF CONSTRUCTION: Notice sent _____ Filed 7-20-77

Extension fee \$2.00, extended to _____

To _____

PROOF OF APPROPRIATION: Notice sent _____ Filed 8-1-77

Extension fee \$2.00, extended to 5-1-79

To _____

Statement of certificate fee sent _____ Received 5.00

O.K.'d for certificate 8/1/78 by KAC

CERTIFICATE OF WATER RIGHT NO. C Issued 9-29-78