

# **Yuba County Self-Evaluation and Transition Plan for the Public Right-of-Way**

County of Yuba

Department of Public Works



April, 2023



Table of Contents

<b>I.</b>	<b>Executive Summary</b>	<b>3</b>
a.	Purpose	3
b.	ADA Regulations	3
c.	Inventory Program	3
d.	Implementation of Transition Plan	4
<b>II.</b>	<b>Introduction</b>	<b>5</b>
<b>III.</b>	<b>ADA Regulations and Standards</b>	<b>6</b>
a.	History of the ADA	6
b.	Title II and Title III	6
c.	2010 ADA Standards	7
<b>IV.</b>	<b>Self-Evaluation Program and Results</b>	<b>8</b>
a.	Program Development	8
b.	Inventory Procedure	10
c.	Public Involvement in Self-Evaluation Process	15
d.	Evaluation Results	15
e.	ADA Coordinator and Responsibilities	19
f.	Public Grievance Procedure	19
<b>V.</b>	<b>Transition Plan and Monitoring Program</b>	<b>21</b>
a.	Transition Plan	21
b.	Current Status of Transportation System	21
c.	Data Analysis	21
d.	Completed Projects	23
e.	Scheduled Projects	25
<b>VI.</b>	<b>References</b>	<b>31</b>
<b>VII.</b>	<b>Appendices</b>	<b>32</b>
<b>VIII.</b>	<b>Attachment 1: Yuba County ADA Complaint/Assistance Form</b>	<b>37</b>
<b>IX.</b>	<b>Attachment 2: ADA Facility Data Collected</b>	<b>39</b>

Figures and Tables

<b>Figure 1:</b>	<b>GIS Application Used to Map Data Points</b>	<b>10</b>
<b>Figure 2:</b>	<b>Data Collection Map</b>	<b>11</b>
<b>Figure 3:</b>	<b>Tools Used to Conduct ADA Self-Evaluation</b>	<b>13</b>
<b>Figure 4:</b>	<b>Example of ADA Compliant Curb Ramp</b>	<b>17</b>
<b>Figure 5:</b>	<b>Example of ADA Non-Compliant Curb Ramp</b>	<b>17</b>
<b>Figure 6:</b>	<b>Example of a Barrier</b>	<b>18</b>
<b>Figure 7:</b>	<b>Proposed ADA Projects Map</b>	<b>27</b>
<b>Table 1:</b>	<b>Self-Evaluation Program Results</b>	<b>22</b>
<b>Table 2:</b>	<b>Number of Existing Facilities in Each Priority Group</b>	<b>26</b>

Appendices

<b>Appendix A:</b>	<b>Yuba County ADA Complaint/Assistance Procedure</b>	<b>A-1</b>
<b>Appendix B:</b>	<b>Self-Evaluation Application</b>	<b>A-2</b>
<b>Appendix C:</b>	<b>Yuba County Department of Public Works Curb Ramp and Driveway Standard Specifications and Drawings</b>	<b>A-3</b>



## I. Executive Summary

### a. Purpose

The Yuba County Department of Public Works (YCDPW) conducted a Self-Evaluation and developed a Transition Plan in compliance with regulations set out in the Americans with Disabilities Act of 1990 (ADA) and the 2010 ADA Standards for Accessible Design (2010 Standards). The purpose of the evaluation was to review the current policies, practices, and procedures followed by the Yuba County Department of Public Works and identify, and inventory, physical barriers in the unincorporated County right-of-way that limit accessibility for persons with disabilities. The Transition Plan provides the County the necessary steps to maintain compliance with federal regulations while improving the safety and accessibility of facilities through improvement projects.

### b. ADA Regulations

The 2010 ADA Standards for Accessible Design are comprised of the standards that control the design of ADA compliant facilities. Title II and Title III of the Americans with Disabilities Act of 1990 guarantee the opportunity for access to any facility by all members of the public. The 2010 Standards, adopted as revisions to regulations for Title II and Title III of the ADA, assist disabled persons by requiring specific design elements that enable use by all pedestrians at public facilities. The regulations stated in Title II and Title III, and the 2010 Standards, are enforced by the United States Department of Justice. (U.S. Dept. of Justice, *2010 ADA*)

### c. Inventory Program

Approximately 1,107 curb ramps, and other public facilities, were evaluated from 2016-2022 as a part of the Yuba County Self-Evaluation program. Field data was



collected for each evaluated point and recorded by pen and paper, or uploaded to the database via a Microsoft Surface Pro tablet, or iPad. The data was analyzed based on the criteria found on the United States Access Board website under *Guide to the ADA Standards: Chapter 4: Ramps and Curb Ramps*. Each facility was determined to meet current ADA standards, the Americans with Disabilities Act Accessibility Guidelines for Buildings and Facilities (ADAAG) or the Uniform Federal Accessibility Standards (UFAS) criteria for ramps built prior to March 12, 2015, or not be in compliance with current ADA standards. The County employees performing the evaluation came to this conclusion as a result of the numerical data recorded.

#### d. Implementation of Transition Plan

The Yuba County Department of Public Works relies on federal, state, and local funding for the entirety of its projects and currently does not have a funding source to specifically improve ADA facilities. With a budget of approximately \$54.1 million to cover all expenses for the years 2017-2021, YCDPW has planned to incorporate the enhancement of its ADA facilities with transportation improvement projects throughout the county. Each major improvement project included in the current YCDPW Transportation Master Plan will provide for the replacement of existing ADA barriers, the enhancement of existing curb ramps, and the implementation of new ADA facilities. The Public Works Department is averaged approximately 4 projects per year, and built approx. 109 ADA accessible facilities, from 2017 to 2023.



## II. Introduction

The Yuba County Department of Public Works performed a Self-Evaluation and developed a Transition Plan to comply with regulations that were set forth in the Americans with Disabilities Act of 1990 and the 2010 ADA Standards for Accessible Design. The YCDPW used these guidelines and design standards to evaluate the facilities contained in the unincorporated County limits and inside the public right-of-way. The YCDPW evaluated approx. 1,107 curb ramps, driveways, and pedestrian walkways to locate any potential hardships for the County citizens. Data was recorded for each facility and the location was stored in a County GIS application. The YCDPW will continue to monitor its facilities to update the transition plan.

The data documented during the Self-Evaluation was analyzed and used to generate a Transition Plan. The Transition Plan outlines the method proposed to schedule the replacement and repair of facilities. The facilities were organized into priority groups, Priority 1 to Priority 11, based on the type of facility, the type of pedestrian use, and the level of necessity for improvements. Priority 1 facilities are currently scheduled for replacement or repair by the year 2025. The design of the priority system allows the facilities in the lower priority groupings to be upgraded towards Priority 1 as improvement projects are completed.



### III. ADA Regulations and Standards

#### a. History of the ADA

The Americans with Disabilities Act of 1990 was enacted on July 26, 1990 by the United States Department of Justice. This Act improved on the standards and regulations set in the Rehabilitation Act of 1973. The ADA is the federal law that prohibits discrimination of persons on a basis of disability and guarantees equal rights, and opportunities, for these persons (U.S. Dept. of Justice, "State and Local...").

The ADA is composed of five titles that focus on regulations for the areas of employment (Title I), public entities (Title II), public accommodations (Title III), telecommunications (Title IV), and miscellaneous provisions (Title V). This plan will concentrate on Title II and Title III, which provides regulations for State and local governments. The ADA implemented Title II and Title III as revisions in 1991 to add regulations and design standards to the original law (U.S. Dept. of Justice, "The Americans...").

The 2010 ADA Standards for Accessible Design were adopted on September 15<sup>th</sup>, 2010. These 2010 Standards were published when the Department of Justice revised regulations from Title II and Title III of the ADA. The 2010 Standards have been enforced since March 15, 2012 and provide guidelines for the design criteria necessary for ADA compliant facilities (U.S. Dept. of Justice, "ADA Standards...").

#### b. Title II and Title III

Title II of the ADA prohibits discrimination of disabled persons as it pertains to services, programs, and activities provided to the public by State and local governments (U.S. Dept. of Justice, "State and Local..."). The requirement for this Self-Evaluation and Transition Plan is included in Title II: 28 CFR Part 35 of the ADA. Title II also calls for each public entity to appoint an ADA Coordinator, establish an ADA grievance procedure, and provide notice of the rights of individuals under the ADA and Title II (28 C.F.R. § 35.106). The Public Works Department has collaborated with the Yuba County Department of Human



Resources and Organizational Services in adopting the grievance procedure (Appendix B) and provides notice of individual rights under the ADA in the *Yuba County Americans with Disabilities Act and Fair Employment and Housing Act Compliance Policy*. This policy can be found in the Human Resources Office and online at the following link:

<https://www.yuba.org/Yuba%20County/Human%20Resources%20and%20Organizational%20Services/7.%20Risk%20Management%20&%20Safety/ADA%20FEHA%20Compliance%20Policy%20and%20Complaint%20form.pdf>

Title III of the ADA prohibits the denial of public accommodations to any individual, and that includes transportation accommodations. Title III contained the 1991 ADA Standards for Accessible Design which could be used until 2012. Currently, all new construction must follow the guidelines set in place by the 2010 Standards. Existing facilities may be exempt from compliance with current standards, but any alterations should focus on removing barriers from existing facilities. (U.S. Dept. of Justice, "The Americans...")

#### c. 2010 Standards

The 2010 ADA Standards for Accessible Design contain revised regulations for both Title II and Title III of the Americans with Disabilities Act of 1990. The 2010 Standards cover subjects including communications, recreation facilities, health care, buildings, transportation, and the public right-of-way (U.S. Dept. of Justice, *2010 ADA*). The Yuba County Department of Public Works is tasked with the construction and maintenance of facilities inside the public right-of-way. The YCDPW follows the guidelines provided in the 2010 Standards and has continued to construct to the Caltrans standard drawings, and specifications, to comply with these regulations. The YCDPW referenced the 2010 Standards for design criteria related to facility compliance during the Self-Evaluation process.



## IV. Self-Evaluation Program and Results

### a. Program Development

The YCDPW developed a program in 2016 to conduct a self-evaluation of the ADA regulated County facilities that are located in the unincorporated County public right-of-way. Safe and accessible pedestrian transportation was the main concern of the County employees conducting the program. Pedestrian walkways were evaluated with attention paid to curb ramps and commercial, and residential, driveway crossings. Intersections with traffic signals, pedestrian signals, and any crosswalks leading to pedestrian walkways were also evaluated. The County did not survey for barriers in locations with the absence of a pedestrian access route.

In 2016, the program was started by a Yuba County Engineering Technician with oversight from a Yuba County Principal Engineer. The YCDPW has an engineering division that fluctuates with a normal staff of nine employees which has limited the available workforce for the project. With multiple responsibilities, the Engineering Technician was able to evaluate approximately sixteen curb ramps and sidewalks in the first year of the program which have since been re-evaluated. This data was recorded by hand but has been uploaded to the current database.

By 2017, a Yuba County GIS Analyst developed an application to streamline the facility evaluation process. The application is a form, which contains attributes, that is used to evaluate curb ramps for ADA compliance with the 2010 Standards. The application includes the following parameters:

Questions answered to locate evaluated facility:

1. Street Name
2. Street Intersection
3. Location
4. Current Pedestrian Use
5. Location Priority



Ramp properties:

6. Ramp Type
7. Truncated Domes
8. Sidewalk
9. Side Flares
10. Top Landing

Numerical criteria analyzed to determine ADA compliance (units):

11. Driveway Depression (% slope)
12. Lip Height (inches)
13. Landing Slope (% slope)
14. Ramp Cross Slope (% slope)
15. Gutter Slope (% slope)
16. Sidewalk Slope (% slope)
17. Right Flare Slope (% slope)
18. Left Flare Slope (% slope)
19. Ramp Slope (% slope)
20. Ramp Width (feet)
21. Landing Length (feet)
22. Truncated Dome Length (feet)

Notes and pictures for supplementary analysis:

23. Notes
24. Other Hazard
25. Attachment

At the end of the list of questions, a picture of the facility was taken and saved with the evaluation data. The application also contains a GIS map (Figure 1) to locate and inventory each evaluated facility. The complete evaluation application is attached at the end of this plan (Appendix C).



**2. Select Location**  
Specify the location for this entry by clicking/tapping the map or by using one of the following options.

Latitude: 39.12992, Longitude: -121.57171

**3. Complete Form**  
Add this information to the map.

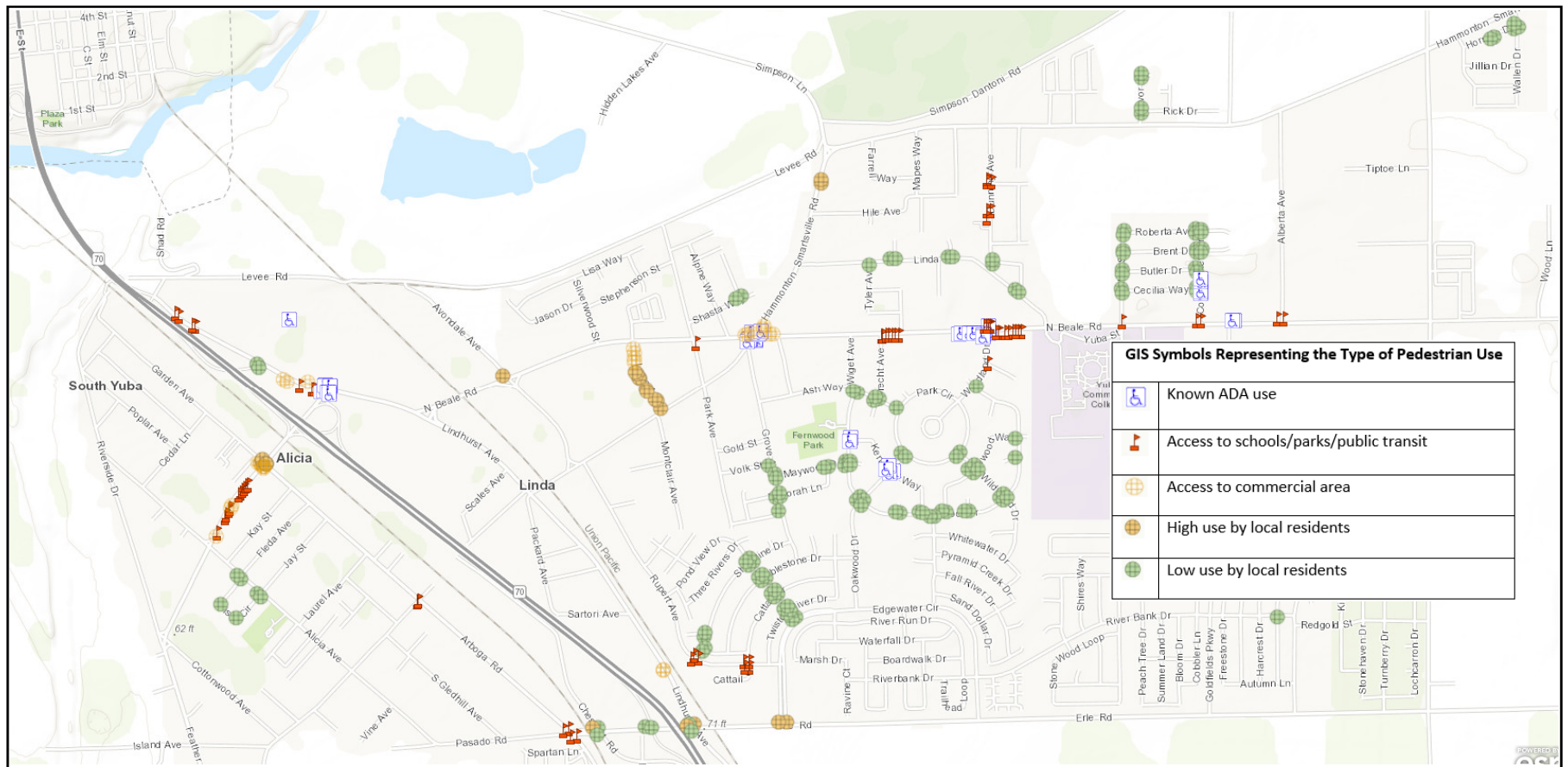
**Figure 1:** GIS Application used to map data points

Finally, the form is submitted and the data is stored in a Yuba County GIS database. The data has also been exported to a Microsoft Excel file to allow for easier access to data.

### b. Inventory Procedure

A Yuba County Department of Public Works Associate Engineer, and Assistant Engineer, continued the ADA Self-Evaluation program in 2017. They surveyed approximately 513 ADA facilities in the unincorporated County of Yuba. These facilities were either determined to meet ADA standards, the ADAAG/UFAS criteria for ramps built prior to March 15, 2012, or marked for necessary future improvements to meet the 2010 Standards. The maps containing the locations of some of evaluated facilities can be seen in Figures 2a-2b.

Each symbol on the maps designates a facility that was evaluated in the field. The symbols represent the type of pedestrian use for each facility as determined by the evaluator. The description for each symbol can be found in the legend for the map.



**Figure 2a: Data Collection Map**

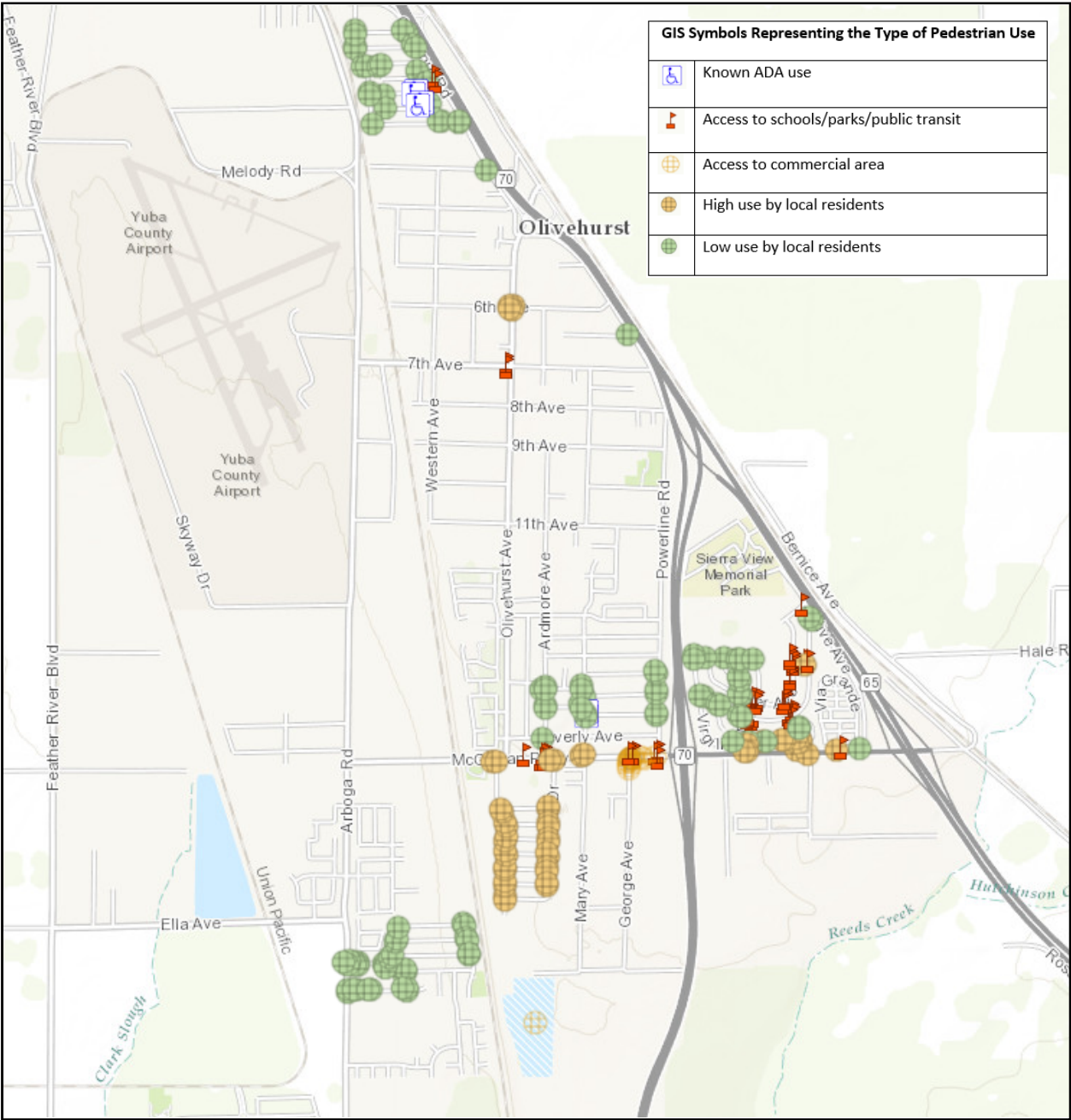


Figure 2b: Data Collection Map



Satellite photos were used to locate each existing facility in the unincorporated County of Yuba. Ramps that were not provided on the satellite photos were found after an extensive search by truck throughout the unincorporated County.

A Stanley Bostitch 35-foot measuring tape and a M-D Building Products SMARTTOOL were the materials used to take measurements at each facility. Two Microsoft Surface Pro tablets were leased to the Yuba County Department of Public Works for the Self-Evaluation program. Also, two Verizon Mifi devices were used to enable Wi-Fi access in the field. These tools are shown below in Figure 3.



**Figure 3:** ADA Self-Evaluation tools from:

"35-Ft Tape Measure." *Shop Stanley 35-Ft Tape Measure at Lowes.com*, Lowe's, 2017, [www.lowes.com/pd/Stanley-35-ft-Tape-Measure/3199219](http://www.lowes.com/pd/Stanley-35-ft-Tape-Measure/3199219)

"Surface Pro – Intel Core m3 / 128GB SSD / 4GB RAM." *Microsoft*, Microsoft, 2017. Web. 24 Sep. 2017, <https://www.microsoft.com/en-us/store/d/surface-pro/8nkt9wttrbjk/H3CS>

"Jetpack® MiFi® 7730L." *Verizon*, Verizon Wireless, 2017. Web. 24 Sep. 2017, <https://www.verizonwireless.com/internet-devices/verizon-jetpack-mifi-7730L/>

"SmartTool 48 in. Level." *THE HOME DEPOT*, Home Depot Product Authority, LLC, 2017. Web. 24 Sep. 2017, <http://www.homedepot.com/p/SmartTool-48-in-Level-92296/204309796>

The four-foot-long SMARTTOOL was calibrated twice a week, on Tuesday and Thursday mornings, before leaving the office to perform evaluations. This level was used to determine the various slope values of ramps that are included in the 2010 Standards curb ramp criteria. The Bostitch measuring tape was used to find the necessary length values. The data entries were recorded with Surface Pro tablets and submitted to the GIS database.

The evaluation personnel were each issued Microsoft Surface Pro tablets to work the Self-Evaluation program. At each evaluation area they opened the GIS form



on the tablet and filled out the location questions for prospective facilities. Next, one of the two employees measured the features for a specific facility while the other inputted the data into the Surface Pro. After all measurements were taken, the employee on the tablet took a picture of the recently evaluated facility and submitted the form to the GIS database, while the employee who performed the measurements retrieved his Surface Pro for the next facility. The two rotated roles for the next facility. This strategy was the optimal method to evaluate the maximum number of facilities each day.

Typically, 28-35 facilities were evaluated each day over a seven-hour period. The program began in July of 2017 and the facilities were commonly evaluated between the hours of 6:30 am and 2:00 pm. All of the targeted facilities in the unincorporated County have been evaluated (roughly 513 facilities) with the data uploaded into the GIS database.

The remaining curb ramps, in developments that were built within the last 25 years, were recently evaluated following the same process described above. Approximately 650 curb ramps in the unincorporated County were included.

These ramps were built to the ADAAG and UFAS guidelines at the time they were constructed. There is no current YCDPW standard drawing for curb ramps, and the Department requires all newly constructed ramps to meet the 2010 design standards found in the Caltrans Standard Plans and Revised Standard Plans for curb ramps. The YCDPW standard specifications and drawings can be found in Appendix D. The complete raw data results can be found attached to this ADA Self-Evaluation and Transition Plan as Attachment 2.



### c. Public Involvement in Self-Evaluation Process

The Yuba County Department of Public Works provided an opportunity for the public to submit comments during the Self-Evaluation process. A draft copy of this Self-Evaluation and Transition Plan was made available to the public during the initial Self-Evaluation period. It was posted to the Department of Public Works website and the County encouraged comments and opinions on the state of the County's ADA policies, practices, and procedures. A notice, included with the transition plan on the Public Works website, continues to encourage public comment and review of the transition plan for potential adjustments.

Any recommendations from interested persons were to be considered for implementation as a part of the Self-Evaluation process. Unfortunately, the County did not receive any comments or recommendations during the months the plan was open to the public. During this time, the County continued its Self-Evaluation and further developed this plan.

The YCDPW also reached out to a local ADA support service for their input on the Self-Evaluation program. They were contacted by phone the same week the plan was posted to the YCDPW website and agreed to read the transition plan and provide comments. However, the County did not receive any feedback from the ADA support service.

### d. Evaluation Results

Many of the curb ramps that were evaluated during the self-evaluation of the unincorporated County area do not meet the 2010 Standards for ADA compliance. Approximately 400 of 1,107, curb ramps, driveways, and other facilities that were evaluated met the 2010 Standards. Over half of the ramps evaluated at least satisfied the requirements in place prior to 2012. The severity of non-compliance may vary between each facility. The most common cause for failure was the fact that there was no ramp present for walkways that reached a curb.

Each evaluated facility that does not meet the current ADA, or ADAAG/UFAS, Standards has been organized into two categories. The first category has been



labeled “barriers”. These locations have existing pedestrian walkways that may not be accessible for all citizens due to the lack of a curb ramp, a lip height larger than the allowable standard, or a trip hazard. The second category of non-compliant facilities can be distinguished as facilities that do not meet 2010 Standards due to various measurable design deficiencies.

A facility may have been deemed non-compliant by ADA standards in the “Other” category for a number of reasons. These included ramps that needed vegetation removal, were not adequately marked in dangerous intersections, or did not pass a visual examination administered by the evaluator.

The following figures represent examples of an ADA compliant ramp (Figure 4), a non-compliant ramp (Figure 5), and a barrier (Figure 6). The ramp in Figure 4 met all of the criteria necessary for a safe and accessible ramp facility.

The ramp in Figure 5 did not meet the 2010 standards for a variety of reasons. While it met the standards for ramp cross slope and ramp width, the curb ramp had slope values above the allowable design for the ramp slope, right and left flare slope, and the gutter slope. There is also no top landing attached to this curb ramp, but that is not always a necessary requirement.

A physical barrier can be seen in Figure 6. This facility features a crosswalk, but there is no transition from the crosswalk to the sidewalk. The sidewalk can be seen in the figure, but a curb ramp should be constructed to allow handicapped pedestrians to access the sidewalk.



**Figure 4:** Example of curb ramp compliant with ADA standards (Data entry #38)



**Figure 5:** Example of ADA non-compliant curb ramp (Data entry #181)



**Figure 6:** Example of a barrier (Data entry #455)

The final portion of the self-evaluation program called for the completion and review of policies, practices, and procedures followed by the Yuba County Department of Public Works. The YCDPW reviewed the in-house standard plans and specifications, as well as the Caltrans standard plans and specifications, prior to commencement of the self-evaluation program. The design of any future improvements will continue to follow the requirements of the ADA, the 2010 Standards, and the Caltrans Revised Standard Plans and Specifications.

A copy of the Design Information Bulletin (DIB 82-06) was also obtained by the YCDPW at the beginning of the self-evaluation process. This bulletin reflected on changes in Federal and State guidance for certain projects. Revisions completed by the FHWA were included, as well as information regarding the 2010 ADA Standards and the 2013 California Building Code. YCDPW currently has a copy of DIB 82-06 for reference.



#### e. ADA Coordinator and Responsibilities

Yuba County Community Development and Services Agency (CDSA) employee Brett Poliquin has been designated as the ADA Coordinator. The CDSA will be responsible for the implementation of the Transition Plan, and Brett Poliquin will be the main contact for future inquiries about the Yuba County ADA standards and progress of the Transition Plan. He can be reached with the following contact information:

**Brett Poliquin**

Principal Engineer

Yuba County Community Development & Services Agency

915 8<sup>th</sup> Street, Suite 125, Marysville, CA 95901

(530) 749-5416

[bpoliquin@co.yuba.ca.us](mailto:bpoliquin@co.yuba.ca.us)

#### f. Public Grievance Procedure

The County of Yuba has provided the community with resources to help improve access to facilities inside the public right-of-way. An “ADA Complaint/Assistance Procedure” (Appendix B) has been posted on the Yuba County Department of Human Resources website since 2012. This procedure defines the steps that should be taken when a member of the public is looking to file a complaint or request an accommodation. The ADA Complaint/Assistance Procedure can be found as a part of the Yuba County Americans with Disabilities Act and Fair Employment and Housing Act Compliance Policy at

<https://www.yuba.org/Yuba%20County/Human%20Resources%20and%20Organizational%20Services/7.%20Risk%20Management%20&%20Safety/ADA%20FEHA%20Compliance%20Policy%20and%20Complaint%20form.pdf>.

Also on the Yuba County Department of Human Resources website, at

<https://www.yuba.org/Yuba%20County/Human%20Resources%20and%20Organizational%20Services/7.%20Risk%20Management%20&%20Safety/ADA%20FEHA%20Compliance%20Policy%20and%20Complaint%20form.pdf>, the public can also find a link for an “ADA Complaint/Assistance Form” (Attachment 1). It is here that



members of the community have the opportunity to inform the YCDPW of any potential hindrances to public access in the County right-of-way. This grievance form is similar to the State ADA Grievance Form, as both require reporting party information, location of issue, and description of complaint. A completed form must be submitted within 180 days of any violation to the ADA Coordinator. The ADA Coordinator is indicated in the procedure, and complaint form, as the “ADA Compliance Officer”.

With the knowledge obtained by reading this plan, local residents will be able to submit an educated and descriptive complaint. For reference, the YCDPW standard drawings and specifications for curb ramps and driveways are included in Appendix D and can be found on the Yuba County Department of Public Works website. A link to this ADA Self-Evaluation and Transition Plan will also be available on the Public Works Department website home page.



## V. Transition Plan and Monitoring Program

### a. Yuba County Transition Plan

This Transition Plan focuses on the enhancement of ADA facilities, located within the unincorporated County public right-of-way, that were marked for improvement as a result of the Self-Evaluation program. The Yuba County Department of Public Works has a schedule of projects in the Transportation Master Plan that will remove physical barriers, improve curb ramps that do not meet current ADA standards, and introduce new ADA facilities to the community. A priority system has been implemented to aid in the scheduling of future projects with an emphasis on barrier removal. The Transition Plan is a dynamic document that will be updated and monitored as progress is made on projects.

### b. Current Status of Yuba County Transportation System

The majority of roadways in Yuba County fall under the federal functional classification of rural roads. These include rural minor arterial, rural major collector, rural minor collector, and rural local roads. The unincorporated County roadways that contain public pedestrian facilities are made up of mainly urban minor arterial, urban collector, and urban residential roads. Due to limited funding, it is difficult for the Department of Public Works to make improvements beyond any scheduled improvement projects each year. The department has made a conscious effort to acquire as much funding as possible through grant programs and other outlets. It is the goal of the department to improve all of the roadways in the County and upgrade existing ADA facilities to the current 2010 Standards.

### c. Data Analysis

The numerical criteria analyzed for each facility were the governing factor in deciding if there was compliance with the current standards. For the program, almost 10.4% of the evaluated facilities did not have a curb ramp when there was a pedestrian walkway present with access to a roadway. These barriers are one of the physical obstacles that the County is looking to eliminate as a result of the



Self-Evaluation and Transition Plan. Curb ramps with too steep of a ramp slope came in second with approximately 10% of surveyed ramps failing by this attribute. The results of the Self-Evaluation program can be seen in Table 1.

**Table 1:** Self-Evaluation program results

Reason for Con-Compliance	Total	% of evaluated facilities
Compliant (incl. 2012 standards)	628	57%
Drive Depression	55	5%
Gutter Slope	70	6%
Landing Slope	12	1%
Lip Height	4	0.5%
No Ramp	115	10%
Ramp Cross Slope	32	3%
Ramp Slope	111	10%
Trip Hazard	80	7%
<b>Total</b>	<b>1107</b>	<b>Facilities</b>

Nearly 5% of driveways that were evaluated did not meet the current ADA standards. Driveways are a main source of access for pedestrians as many of the sidewalks in the County cross commercial and residential driveways. These driveways must maintain a cross slope of 2.0% or less to meet the 2010 Standards. Most of these facilities were built many years ago and were not designed with the modern method of a sidewalk that is detached from the driveway approach.

There was also a high number of facilities that failed to meet ADA criteria due to steep gutter slopes (adjoining slopes). Many of these were the result of past overlay projects. Asphalt was added to the existing roadway and therefore may have created a lip between the new asphalt layer and the existing lip of the gutter.



#### d. Completed Projects

Yuba County has completed multiple capital improvement projects since 2006 that have improved public access and limited barriers. Based on the cost of work completed during recent projects it can be estimated that the repair cost for each curb ramp will be almost \$10,000.00. With 479 curb ramps in need of improvements that can be calculated out to a total of \$4,790,000.00. Recently completed projects are listed below:

##### 1. Powerline Road

In 2006, Powerline Road, from McGowan Parkway to 14<sup>th</sup> Street, in Olivehurst, CA underwent major reconstruction. The roadway was widened, new curb, gutter, and sidewalks were added, and the drainage system was improved. At each cross-street intersection curb ramps were implemented that meet the 2010 ADA Standards or ADAAG/UFAS standards. In 2013, Powerline Road had the same improvements done from the 9<sup>th</sup> Avenue intersection to the Olivehurst Avenue intersection meeting the 2010 Standards. The remaining Powerline Road section from 9<sup>th</sup> Ave to 15<sup>th</sup> Street finished construction in 2014. These improvements not only increased the safety of pedestrian traffic along Powerline Road but also provided an ADA accessible route for any persons in the area.

##### 2. Lindhurst Avenue

The intersection of Lindhurst Avenue and Hammonton Road West, located to the northeast of Olivehurst in Linda, CA, received a signal light and other improvements in 2009. The signal light project provided an accessible route for persons with disabilities by including pedestrian crosswalks in each direction and pedestrian signals at these crosswalks.

##### 3. Feather River Boulevard

Feather River Boulevard, located in the unincorporated communities of West Linda and Linda, crosses underneath State Route 70. In 2009 YCDPW installed a sidewalk, bike lane, and transit stop along the SR 70 underpass from North Beale Road in Linda to Garden Avenue in West Linda. This project created an



opportunity for the public to cross under the highway in a safe manner by using the sidewalk.

#### 4. Rose Avenue

Rose Avenue, in southern Olivehurst, connects the busy McGowan Parkway with a residential development to the south. In 2011 a curb, gutter, sidewalk, and drainage improvement project was completed on the west side of the road. This ADA project provided accessibility for any persons traveling to and from the housing development with ADA compliant sidewalks and curb ramps.

#### 5. Olivehurst Avenue

Olivehurst Ave received a complete streets improvement from McGowan Parkway to 7<sup>th</sup> Avenue in 2016. Sidewalks were introduced, as well as a curb, gutter, and bike lanes. This stretch of roadway had utilities that were moved underground to increase safety and reduce the chance of damage to utilities. The ADA improvements as a result of this project can be seen in Figure 7b.

#### 6. 7<sup>th</sup> Avenue

Yuba County recently completed a project on 7<sup>th</sup> Ave, from Olivehurst Ave to Powerline Rd, in Olivehurst, CA as a part of the Safe Routes to School Program. This program funds capital improvement projects that will improve the safety of pedestrians as they travel near schools. Bike lanes were implemented as well as the design and construction of a curb, gutter, and sidewalk on each side of the road. Another goal of this transportation grant program is to incentivize pedestrian transportation to decrease childhood obesity.

Prior to the project there were no sidewalks or bike lanes on either side of 7<sup>th</sup> Ave. Approximately nine new curb ramps were introduced on 7<sup>th</sup> Ave, and four crosswalks were added. These new curb ramps meet the 2010 ADA standards and can be located on the map in Figure 7b. As a result of the project, each residence, and commercial building, along 7<sup>th</sup> Ave received a driveway approach that also meets the 2010 Standards. The project began in the Spring of 2017 and was completed in September, 2017.



## 7. North Beale Road

The Yuba County Department of Public Works has also completed construction on North Beale Road in Linda, CA. North Beale Road endures the most traffic of any roadway in the unincorporated County and underwent a complete streets improvement. The first phase of the project began during the summer of 2017, and the construction of 18 curb ramps and 41 ADA compliant driveways has been completed. The improvements will increase safety for pedestrians and introduce a significant number of new ADA facilities.

Projects that were completed prior to March 15, 2012 were permitted to be built to either the 1991 ADA Standards for Accessible Design or the 2010 ADA Standards for Accessible Design. Any project that began construction following the date of March 15, 2012 required compliance with the 2010 ADA Standards (U.S. Dept. of Justice, "The Americans...").

### e. Scheduled Projects

The Department of Public Works is schedule to release a Transportation Master Plan that forecasts upcoming projects beyond 2024. Barriers and curb ramps scheduled for improvements in these projects hold the highest priority for the Transition Plan, because they already have a plan for funding and design. The YCDPW recognizes that all barriers to ADA need to be removed, so barrier removal holds the next highest priorities (Priority 2 through Priority 6) for potential improvements following anticipated projects.

The Yuba County Department of Public Works developed the priority system to rank the existing barriers, curb ramps, and driveways. The priority system allows the County to schedule future projects based on the degree of necessity for improvements. The priority levels were organized based on designation as a barrier, curb ramp, or driveway, and the type of pedestrian use.

Upcoming ADA projects and modifications will be prioritized as follows:

Priority 1. Removal of existing barriers and construction of new facilities as a result of scheduled improvement projects.



Priority 2. Removal of barriers that deny access to existing pedestrian walkways in known ADA use areas.

Priority 3. Removal of barriers that deny access from existing pedestrian walkways to schools, parks, and public transit.

Priority 4. Removal of barriers that deny access to existing pedestrian walkways in commercial areas.

Priority 5. Removal of barriers that deny access to existing pedestrian walkways in high use residential areas.

Priority 6. Removal of barriers that deny access to existing pedestrian walkways in low use residential areas.

Priority 7. Replacement of curb ramps/driveways that do not meet the 2010 Standards in known ADA use areas.

Priority 8. Replacement of curb ramps/driveways that do not meet the 2010 Standards in areas with access to schools, parks, and public transit.

Priority 9. Replacement of curb ramps/driveways in commercial areas that do not meet the 2010 Standards.

Priority 10. Replacement of curb ramps/driveways that do not meet the 2010 Standards in high use residential areas.

Priority 11. Replacement of curb ramps/driveways that do not meet the 2010 Standards in low use residential areas.

Table 2 represents the number of existing facilities that fall into each priority group.

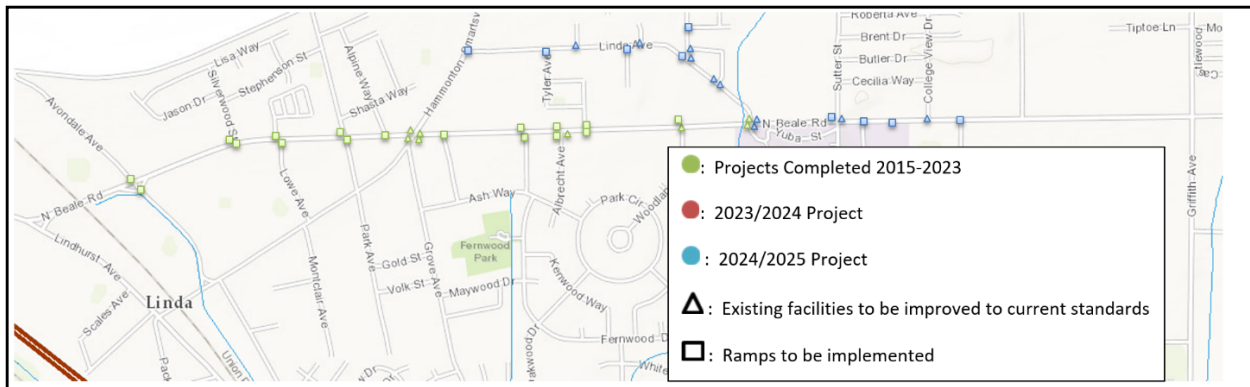
**Table 2:** Current number of existing facilities in each priority group

Priority 1	Priority 2	Priority 3	Priority 4	Priority 5	Priority 6	Priority 7	Priority 8	Priority 9	Priority 10	Priority 11	Compliant
64	5	13	5	6	59	5	30	5	5	182	392



The Priority 1 category represents the approximate number of ADA facilities that are scheduled to be completed before 2025 (See Figure 7 below for locations of scheduled projects). At least 64 more new facilities will be introduced as a result of completing all Priority 1 work. The new facilities include pedestrian crossings, pedestrian signal lights, bus stops, ADA compliant curb ramps, sidewalks and ADA accessible parking lots and driveways.

The strategy of the priority system is to have the lower priority facilities upgraded to Priority 1 as more projects are funded. By the end of the year 2025, all construction of the current Priority 1 facilities is expected to be completed. The YCDPW plans to have many of the facilities that fall under the lower priority categories scheduled for future projects by 2025. With the help of the Self-Evaluation and Transition Plan, it is estimated that 30-40 ADA facilities within the right-of-way of the unincorporated County limits will be improved each year. The Yuba County Department of Public Works anticipates to have each facility that was evaluated as a part of the Self-Evaluation improved within the next 10-15 years.



**Figure 7a:** Proposed and completed ADA Projects

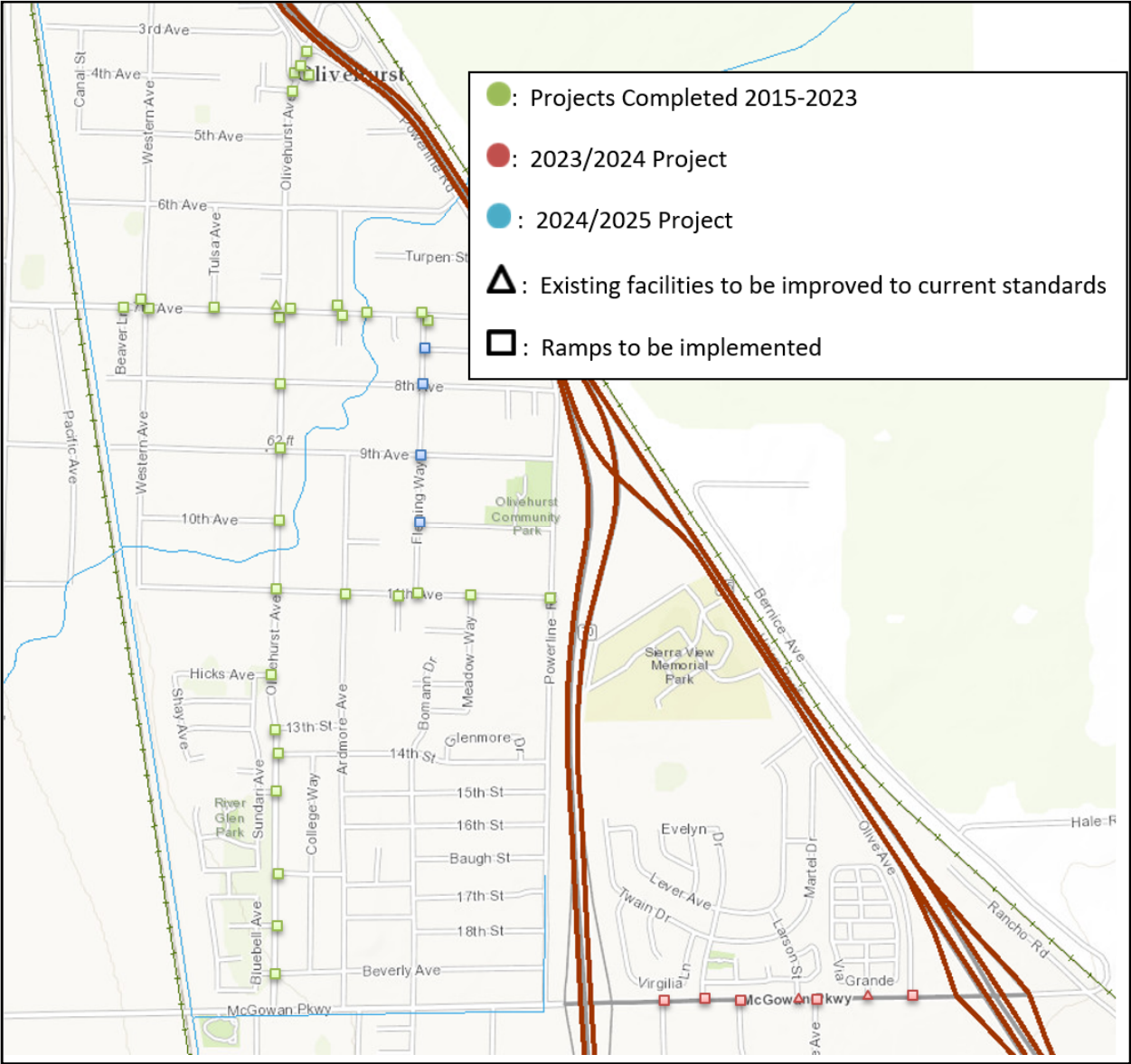
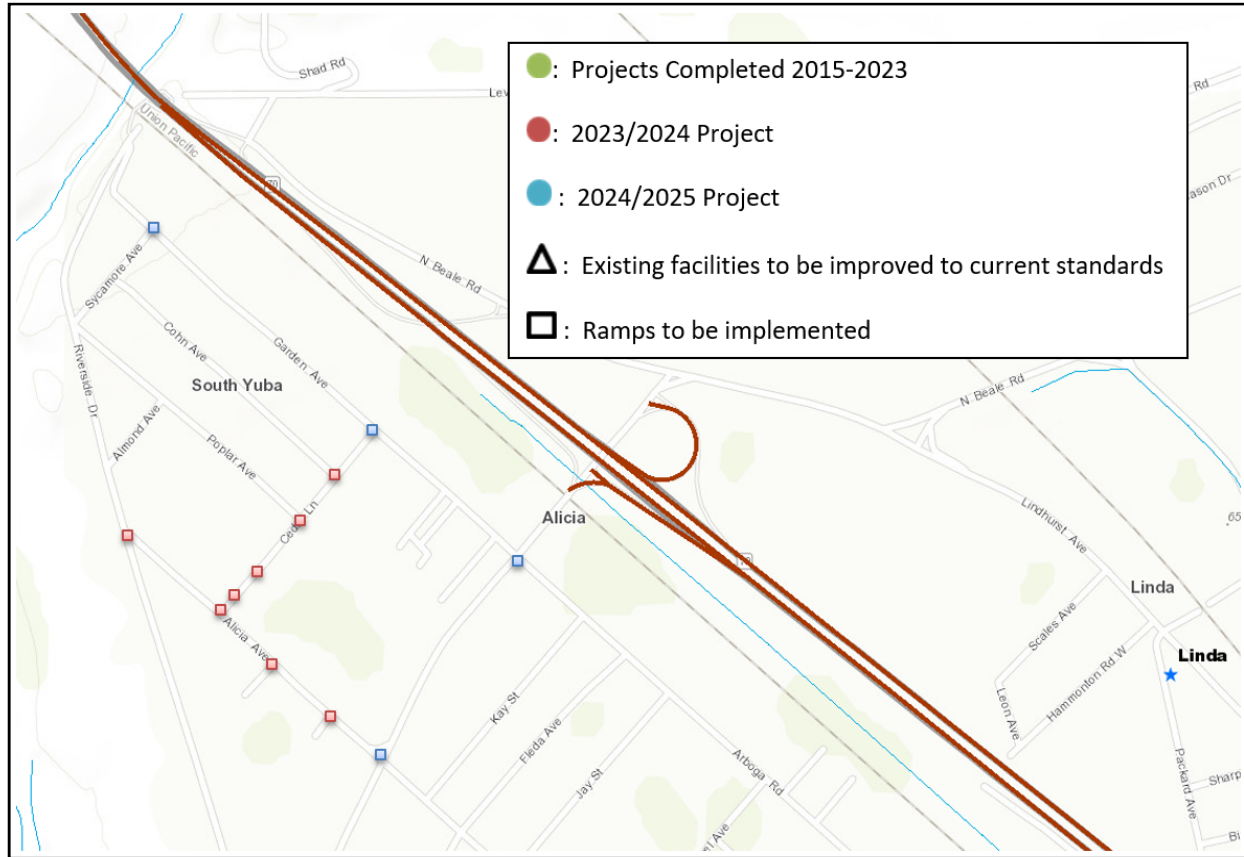


Figure 7b: Proposed and completed ADA Projects



**Figure 7c:** Proposed and completed ADA Projects

Each symbol on the maps represents an “ADA Project”. An ADA Project can be defined as the construction or improvement of one more ADA facilities. Each symbol depicts an ADA Project that has already been completed, or is proposed, as a result of improvement projects. Many of the ADA Projects located at intersections represent 2-8 facilities. The locations where ramps have been, or will be, implemented will result in the removal of existing barriers. These ADA Projects do not even exhibit the vast number of driveways that will be improved.

Many of the road projects completed as capital improvement projects introduce sidewalks to neighborhoods. Yuba County has a large number of older residential neighborhoods that lack curb, gutter, and sidewalk facilities. Sidewalks play a very important role by increasing pedestrian safety and providing pedestrian access routes.



The Yuba County Department of Public Works will keep a record of this Self-Evaluation and Transition Plan on file for at least three years. The progress of this transition plan will be monitored on a yearly basis. Once ADA projects are completed they will be removed from the Transition Plan, and new projects will be added. Brett Poliquin will be working alongside the Yuba County Department of Public Works to guarantee that the scheduled projects will be completed. The Transition Plan, however, is a dynamic report and will be altered and updated as necessary. During this time, the YCDPW will continue to evaluate facilities in the unincorporated County to stay up to date with current standards.



## VI. References

"Chapter 4: Ramps and Curb Ramps." *UNITED STATES ACCESS BOARD*, Web. 26 Sep. 2017,  
<https://www.access-board.gov/guidelines-and-standards/buildings-and-sites/about-the-ada-standards/guide-to-the-ada-standards/chapter-4-ramps-and-curb-ramps>

"NONDISCRIMINATION ON THE BASIS OF DISABILITY IN STATE AND LOCAL GOVERNMENT SERVICES." 28  
"CFR" §35.106. 1991

"NONDISCRIMINATION ON THE BASIS OF DISABILITY IN STATE AND LOCAL GOVERNMENT SERVICES." 28  
"CFR" §35.107. 1991

United States. Dept. of Justice. "State and Local Governments (Title II)." *ADA.gov*, Web. 26 Sep. 2017,  
[https://www.ada.gov/ada\\_title\\_II.htm](https://www.ada.gov/ada_title_II.htm)

United States. Dept. of Justice. "The Americans with Disabilities Act of 1990 and Revised ADA  
Regulations Implementing Title II and Title III." *ADA.gov*, Web. 26 Sep. 2017,  
[https://www.ada.gov/2010\\_regs.htm](https://www.ada.gov/2010_regs.htm)

United States. Dept. of Justice. "ADA Standards for Accessible Design." *ADA.gov*, Web. 7 Nov. 2017,  
[https://www.ada.gov/2010ADASTandards\\_index.htm](https://www.ada.gov/2010ADASTandards_index.htm)


United States. Dept. of Justice. *2010 ADA Standards for Accessible Design*. [Washington, D.C.]: 2010.  
Web. 8 November 20



## VII. Appendices

### Appendix A

#### Yuba County ADA Complaint/Assistance Procedure



HROS Policy 1.10

**ADA Complaint/Assistance Procedure**

Complaints and requests for accommodations should be addressed to the ADA Compliance Officer, who has been designated to coordinate ADA compliance efforts. Please complete the appropriate ADA Form as detailed below and mail to or submit at the address below.

Request for Reasonable Accommodation in Employment Examination Process form – to request an accommodation in the employment application process.

Employee Accommodation Request form – to request an accommodation in your employment with the County of Yuba.

ADA Complaint/Assistance form – to request an accommodation for access to a County program or facility or to file a complaint related to a denial of accommodation in hiring practices, employment, program or facility access.

1. A complaint should be filed in writing, contain at least the name and address of the person filing it, and briefly describe the alleged violation of the regulations.
2. A complaint should be filed within sixty (60) calendar days after the complainant becomes aware of the alleged violation; federal law allows one hundred eighty (180) days.
3. Complaints will be resolved in accordance with Yuba County Employer-Employee Relations Policy, Grievance Procedures.
4. A complaint is considered received by the ADA Compliance Officer when physically received in the Human Resources department and appropriately date stamped.
5. An investigation, as may be appropriate, shall follow the filing of a complaint. The investigation may be formal or informal but thorough and afford all interested persons and their representatives, if any, an opportunity to submit evidence relevant to the complaint.
6. The Human Resources department shall maintain the files and records relating to the complaints filed for a period of at least one year.
7. The right of a person to a prompt and equitable resolution of the complaint filed hereunder shall not be impaired by nor shall the use of this procedure be a prerequisite to the pursuit of other remedies.
8. Other remedies include the filing of an ADA complaint with the appropriate state or federal agency:

**U.S. Equal Employment Opportunity Commission**  
Jurisdictional Office: San Francisco  
350 The Embarcadero  
Suite 500  
San Francisco, CA 94105-1260

**U.S. Department of Justice**  
Civil Rights Division  
950 Pennsylvania Avenue, NW  
Disability Rights Section - NYAV  
Washington, DC 20530

The **Department of Fair Employment and Housing** does not accept complaints filed for investigation by mail. To file a complaint please call one of the toll free numbers below.  
Employment: 1-800-884-1684  
Housing: 1-800-233-3212  
TTY: 1-800-700-2320

**Yuba County Human Resources**  
**Attn: ADA Compliance Officer**  
915 8<sup>th</sup> St. Suite 113  
Marysville, CA 95901  
(530) 749-7860

Yuba County

ADA & FEHA Compliance Policy


- 21 -

**Figure 2:** Procedure for ADA assistance and to file a complaint



Appendix B

Self-Evaluation Application



## Curb Ramp Hosted App

Add new points

### 1. Enter Information

Street Name

Street Intersection

Location

Select...

Current Ped Use (required)

Select...

Groove Barrier

Select...

Loc Priority

Select...

Ramp Type

Select...

Truncated Domes

Select...

Bidewalk

Select...

Side Flare Both L R None

Select...

Please type on of these options: Both, L, R or None

Top Landing Y/N

Select...

Yes or No

Drive\_Depression

Lip Height

Landing Slope

Ramp Cross Slope

Gutter Slope

Gutter Slope

Bidewalk Slope

Right Flare Slope

Left Flare Slope

Ramp Slope

Ramp Width

Landing Length

Truncated Dome Length

Other Hazards

Condition

Select...

Notes

Attach photo or other doc here.

Select File

### 2. Select Location

Specify the location for this entry by clicking/tapping the map or by using one of the following options.


Search

Lat/Lon

Find address or place

Q

Latitude: 39.10382 Longitude: -121.58320



### 3. Complete Form

Add this information to the map.

Submit

View

Figure 3: Copy of the Self-Evaluation Application



## Appendix C

### Yuba County Department of Public Works Curb Ramp and Driveway Standard Specifications and Drawings

#### **6.9 DRIVEWAYS**

6.9.1 The Driveway section is depicted on Yuba County Standard Drawings.

**7.23 HANDICAP RAMPS** -- Sidewalk ramps for handicapped pedestrians shall be constructed at all street intersections and at other locations where required by the Department of Public Works, in accordance with the Yuba County Standard Plans and current federal requirements.

#### **7.26 SIDEWALKS**

7.26.2 The minimum standard width for all sidewalks shall be four (4) feet except as specified below.

**Figure 4:** Yuba County Department of Public Works Standard Specifications for Handicap Ramps, Driveways, and Sidewalks



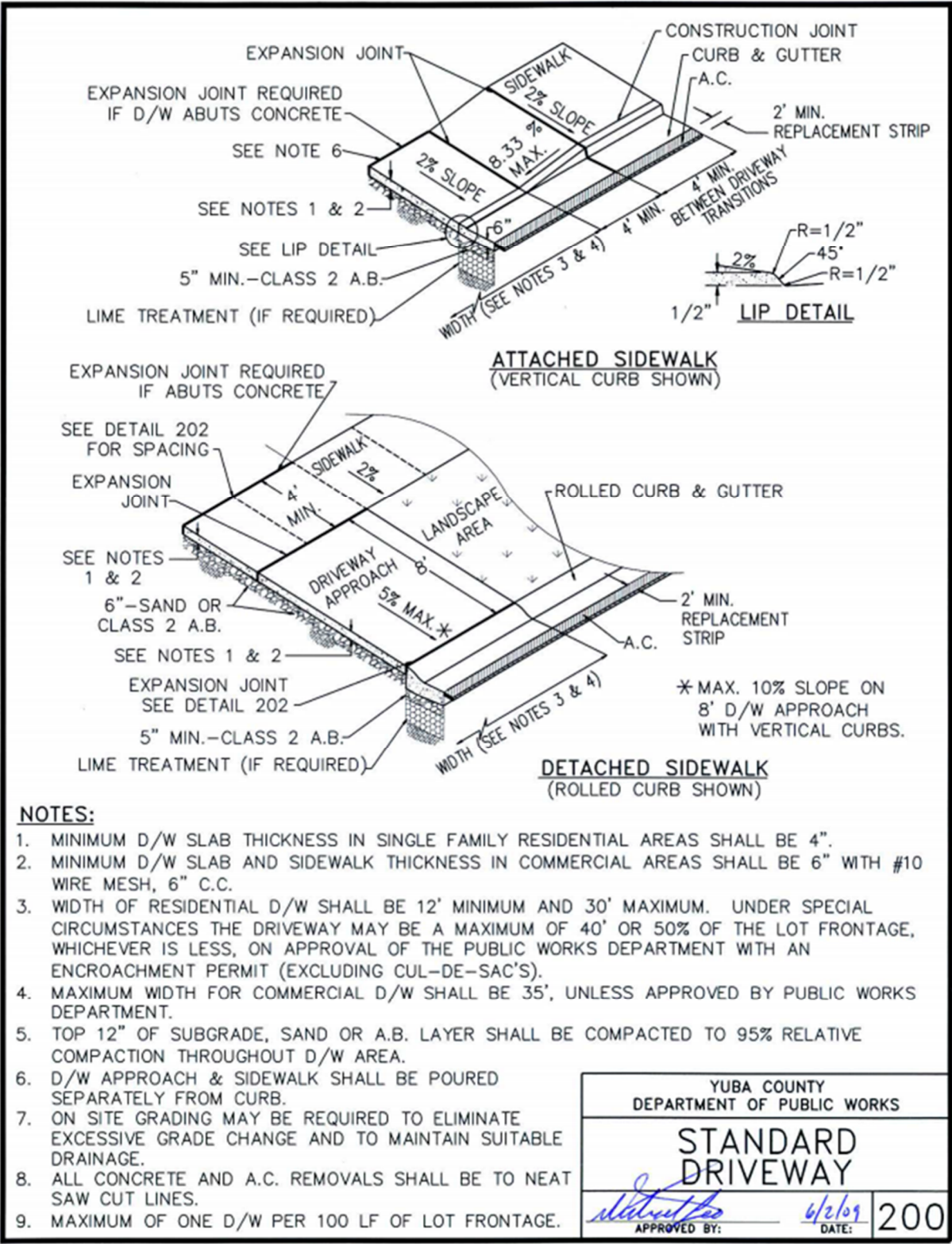


Figure 6: Yuba County Department of Public Works Standard Driveway Drawings



Attachment 1

Yuba County ADA Complaint/Assistance Form



**ADA Complaint/Assistance Form**

Please fill out as much of this form as you can. If you need help, tell us, and we would be happy to provide it. If you don't know the answer to something please leave it blank.

**The Americans with Disabilities Act, the Fair Employment and Housing Act, and Section 504 of the Rehabilitation Act of 1973 prohibit discrimination in the services, programs, activities, accessibility or employment of all state and local governments on the basis of disability and establish requirements for making programs accessible to individuals with disabilities and for providing equally effective communications.**

**Please type or print.**

Name: \_\_\_\_\_  
Last First MI  
Mailing Address: \_\_\_\_\_  
Street City State Zip Code  
Daytime Phone Number: \_\_\_\_\_ Check if this is a TTY ☐  
E-mail Address: \_\_\_\_\_  
Preferred method of contact (i.e. phone, e-mail etc): \_\_\_\_\_  
Are you a Veteran of the Armed Services? ☐ Yes ☐ No

**ADA issues usually fall into one of several categories. Please let us know which category best describes your issue:**

- ☐ **Architectural Access** –The access problem is about a building; for example, a wheelchair ramp is needed, accessible bathrooms are not available, or counters and phones are not at the correct height for wheelchair users.
- ☐ **Programmatic Access** –The access problem is about a service; for example, you cannot get or maintain a county benefit or service because of a disability, or you asked for a reasonable modification of a policy, practice or procedure in order to obtain County benefits or services, but were denied one.
- ☐ **Communication Access** – The access problem involves communication; for example, you need an interpreter, materials in alternative formats, or other auxiliary aids and services in order to have equal access to information and communications for a County benefit, service or activity.
- ☐ **Employment** –The problem relates to your employment, the selection process or employment application; for example, you were denied a reasonable accommodation by your employer.

Which Department/Agency does this involve: \_\_\_\_\_

Please describe the problem you encountered or your request for accommodation (attach additional sheets if necessary):

Location of the issue (if applicable): \_\_\_\_\_

Date(s) of the issue: \_\_\_\_\_



**Complete this section below if you are submitting a complaint.**

Have efforts been made to resolve this complaint through the policies outlined by the department in question?

☐ Yes ☐ No

If yes, what is the status of the complaint:

Has this complaint been filed with another agency or any other Federal, State, or local civil rights agency or court?

☐ Yes ☐ No

If yes, list agency and date filed: \_\_\_\_\_

Is there a change in policy or procedure you wish to see that would be helpful in solving this problem?

Names and Positions of Staff Encountered (if known):

Name: \_\_\_\_\_

Position: \_\_\_\_\_

Name: \_\_\_\_\_

Position: \_\_\_\_\_

Name: \_\_\_\_\_

Position: \_\_\_\_\_

Name: \_\_\_\_\_

Position: \_\_\_\_\_

Was there anyone else who had the same difficulty, or with whom you would want us to speak with in order to get more information? ☐ Yes ☐ No

Name: \_\_\_\_\_

Phone: \_\_\_\_\_

Name: \_\_\_\_\_

Phone: \_\_\_\_\_

Name: \_\_\_\_\_

Phone: \_\_\_\_\_

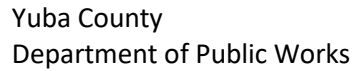
Name: \_\_\_\_\_

Phone: \_\_\_\_\_

Signature: \_\_\_\_\_

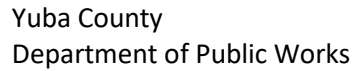
Date: \_\_\_\_\_

Your completed request form and documentation must be mailed or submitted to: Yuba County Human Resources, Attn: ADA Compliance Officer, 915 8<sup>th</sup> St. Suite 113, Marysville, CA 95901. If you have questions please contact our office at (530) 749-7860.

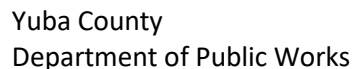


## Attachment 2

[illegible]

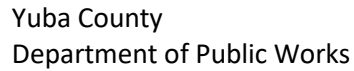


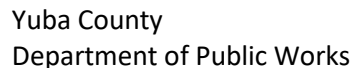
## Self-Evaluation and Transition Plan



Yuba County  
Department of Public Works

[illegible]

[illegible]



## Self-Evaluation and Transition Plan

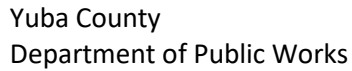
Up height is a half

	negotiations

- Cluster slope 0.1
- Cluster Slope 7.4

Vegetation
------------

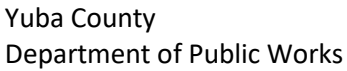
---



Top of ramp is crack	
----------------------	--

Cutter pen has half in lip has .50 and gutter

[illegible]

[illegible]