



**SOUTH YUBA TRANSPORTATION
IMPROVEMENT AUTHORITY
915 Eighth Street, Suite 109A
Marysville, California**



FEBRUARY 2, 2021 – 4:00 P.M.

In compliance with California Executive Orders N-25-20 and N-29-20 (March 17, 2020), members of the Board of Directors and members of the public will participate in the meeting by teleconference via Zoom.

Join Zoom Meeting

<https://us02web.zoom.us/j/86828757879?pwd=VkwrGdTVkthQmRRMTBEZGJVWEpFZz09>

Meeting ID: 868 2875 7879

Passcode: 081378

Or by Phone: 1-669-900-9128 (toll free number)

Meeting ID: 868 2875 7879

Passcode: 081378

Executive Order N-29-20 authorizes local legislative bodies to hold public meetings via teleconference and to make public meetings accessible telephonically or otherwise electronically to all members of the public. Members of the public are encouraged to observe and participate in the teleconference.

CALL TO ORDER: Welcome. As a courtesy to others, please turn off cell phones or other electronic devices which might disrupt the meeting. Thank you.

I **ROLL CALL** – Directors Bradford, Pendergraph, Vasquez, West

II **PUBLIC COMMUNICATIONS:** Any person may speak about any subject of concern within the jurisdiction of the authority which is not on today's agenda. The total amount of time allotted shall be limited to a total of 15 minutes and each individual or group will be limited to no more than 3 minutes. Prior to this time, speakers are requested to fill out a "Request to Speak" card and submit it to the secretary.

III **ACTION ITEMS**

A. Approve meeting minutes of August 4, 2020.

B. Receive update on Comprehensive Implementation Strategy (CIS) and provide input on direction.

V **BOARD AND STAFF MEMBERS REPORTS**

VI **ADJOURN**

In compliance with the Americans with Disabilities Act, the meeting room is wheelchair accessible and disabled parking is available. If you have a disability and need disability-related modifications or accommodations to participate in this meeting, please contact the Clerk of the Board's office at (530) 749-7510 or (530) 749-7353 (fax). Requests must be made two full business days before the start of the meeting.



SOUTH YUBA TRANSPORTATION IMPROVEMENT AUTHORITY

MINUTES
AUGUST 4, 2020



Call to order 4:02 p.m. with a quorum being present as follows: Directors Bradford, Lofton, and West. Director Henderson was absent. Also present were County Administrator Kevin Mallen and, Secretary/Board Clerk Rachel Ferris. Chair Bradford presided.

I ROLL CALL – Directors Bradford, Henderson, Lofton, West – Director Henderson absent

II PUBLIC COMMUNICATIONS: None

III ACTION ITEMS

A. Approve meeting minutes from the regular meeting of February 4, and special meeting of February 18, 2020.

MOTION: Move to approve

MOVED: Rick West SECOND: Doug Lofton

AYES: Gary Bradford, Doug Lofton, Rick West

NOES: None ABSENT: Joe Henderson ABSTAIN: None

Approved via unanimous Roll Call Vote

B. Approve Sacramento State University's request to use South Yuba Transportation Improvement Authority for their Civil Engineering senior class project. Public Works Director Mike Lee recapped request. Principal Engineer and Sacramento State Civil Engineer class instructor Mr. Matt Salveson recapped the use of regional projects that are still in the planning stage as the base for their senior class project, and in response to specific inquiries Mr. Salveson students would not be on site.

MOTION: Move to approve

MOVED: Doug Lofton SECOND: Rick West

AYES: Gary Bradford, Doug Lofton, Rick West

NOES: None ABSENT: Joe Henderson ABSTAIN: None

Approved via unanimous Roll Call Vote

C. Approve professional services agreement with Dokken Engineering for South Yuba Transportation Improvement Authority Comprehensive Implementation Strategy. Public Works Director Mike Lee recapped project, recommendation, and responded to Board inquiries.

MOTION: Move to approve

MOVED: Rick West SECOND: Doug Lofton

AYES: Gary Bradford, Doug Lofton, Rick West

NOES: None ABSENT: Joe Henderson ABSTAIN: None

Approved via unanimous Roll Call Vote

IV BOARD AND STAFF MEMBERS REPORTS – None

V ADJOURN: 4:13 p.m.

SECRETARY ATTEST:
RACHEL FERRIS
CLERK OF THE BOARD OF SUPERVISORS

Chair

Approved: _____

The County of Yuba

Community Development & Services Agency

Michael Lee, Director

Phone – (530) 749-5430 • Fax – (530) 749-5434
915 8th Street, Suite 123
Marysville, California 95901

www.co.yuba.ca.us



BUILDING
749-5440 • Fax 749-5616

CODE ENFORCEMENT
749-5455 • Fax 749-5464

ENVIRONMENTAL HEALTH • CUPA
749-5450 • Fax 749-5454

PLANNING
749-5470 • Fax 749-5434

PUBLIC WORKS • SURVEYOR
749-5420 • Fax 749-5424

FINANCE AND ADMINISTRATION
749-5430 • Fax 749-5434

February 2, 2021

TO: SYTIA Board of Directors

FROM: Michael Lee, Yuba County CDSA Director

SUBJ: Presentation and discussion of progress on SYTIA Comprehensive Implementation Strategy

RECOMMENDATION:

Receive progress information on the Comprehensive Implementation Strategy (CIS) and provide input on direction as desired.

This staff report and the associated presentation on February 2nd provides an update on the team's progress, invites Board members to ask questions, describes our next steps, and affords an opportunity for the Board to influence our path forward.

BACKGROUND:

The Board previously approved a contract in August 2020 to develop a comprehensive implementation strategy for the transportation improvements covered by SYTIA. Since September 2020, work on the implementation strategy has included refining the scope of the 4 projects, developing exhibits to depict the projects, meeting with key stakeholders, collaboration between the City and County staff, and development of a set of shared goals that address the roadway needs of the region.

EXHIBITS AND GOALS

Attached to this staff report are 5 exhibits. The first, which depicts the overall SYTIA CIS program, is followed by 4 individual exhibits of each distinct project.

- Exhibit 1 of 5: Overall SYTIA CIS program
- Exhibit 2 of 5: Plumas Lake Boulevard Extension & SR 70 SB Loop On-Ramp Project
- Exhibit 3 of 5: S. Beale Rd / SR 99 Interchange Project, 3 alternatives
- Exhibit 4 of 5: East Wheatland Expressway Project, 3 options
- Exhibit 5 of 5: SR 65 Realignment

Also attached for your consideration is a list of 9 CIS goals staff prepared to guide the development of the 4 projects. The goals support the overarching purpose of the SYTIA.

WHERE WE ARE IN THE CIS PROCESS:

We are nearing midway through the CIS process. We have shared the SYTIA mission and CIS program with some large stakeholders in November and December including Caltrans, Beale AFB, and staff at the Placer County Transportation Planning Agency. We have refined the 4 projects based on research, input from the stakeholders, site inspections and preliminary engineering concepts.

Our next steps are to continue coordination with stakeholders, perform some traffic evaluations of the S. Beale Interchange and East Wheatland Expressway to support future funding applications. The traffic study should substantiate the individual project benefits as stand-alone projects which will help with future funding applications. We will be preparing estimates for each project and compiling the implementation strategy steps to deliver each. Following that we will be researching funding opportunities and building collaboration with Placer County, Caltrans and SACOG to complete the Draft CIS. We will return at a future Board meeting to present the Draft CIS for your consideration and discussion.

DISCUSSION:

During the February 2nd Board meeting, we will discuss the 4 projects, share the CIS goals, provide the Board with feedback obtained from stakeholder meetings, explain the approach to route adoption, layout the remaining steps going forward and answer your questions. No action is required; the presentation is informational and an opportunity for discussion.

FISCAL IMPACT:

There is no fiscal impact. Presentation item only.

Attachments:

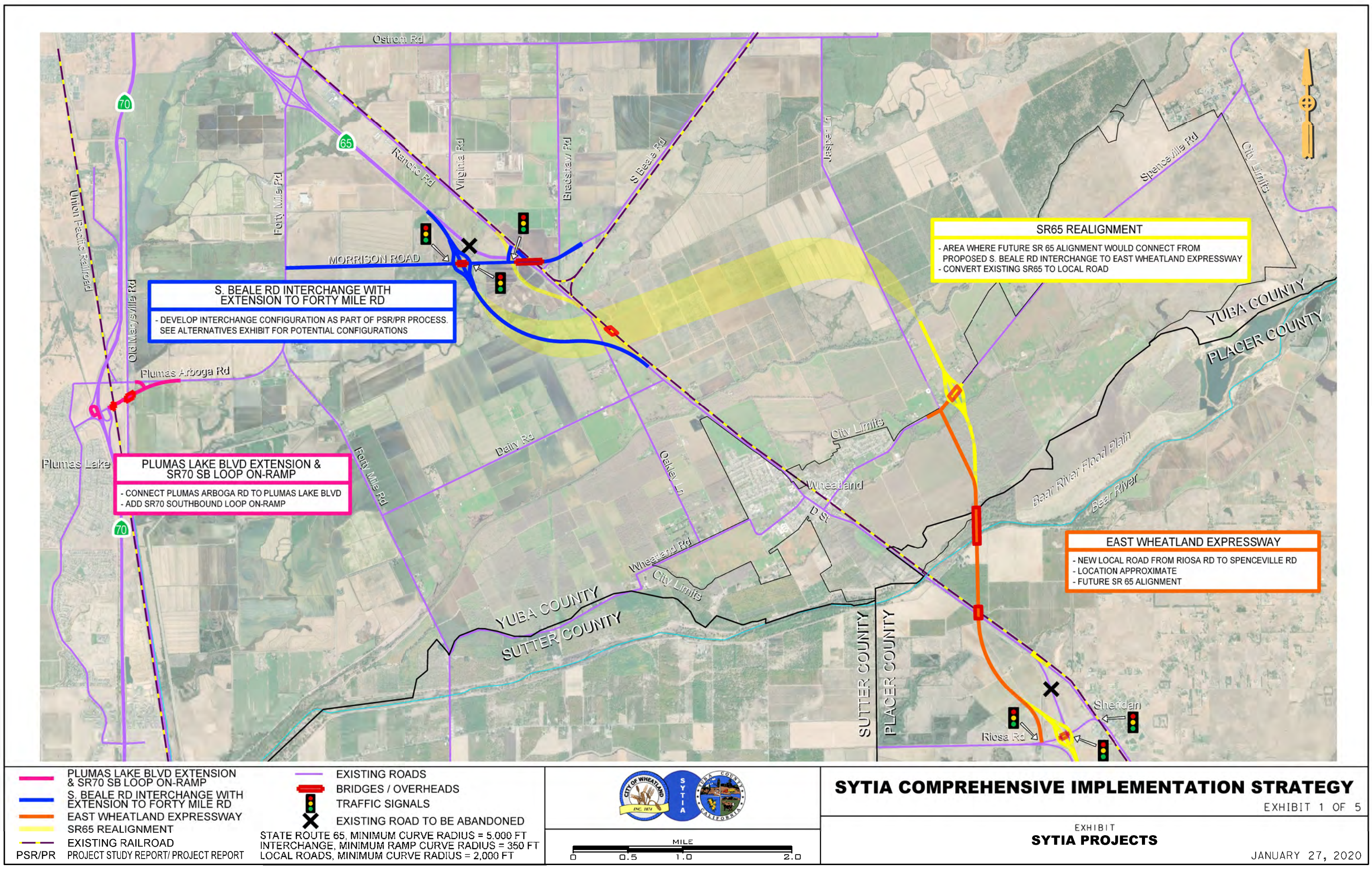
- SYTIA Project Exhibits – 5 sheets
- CIS Goals Statement

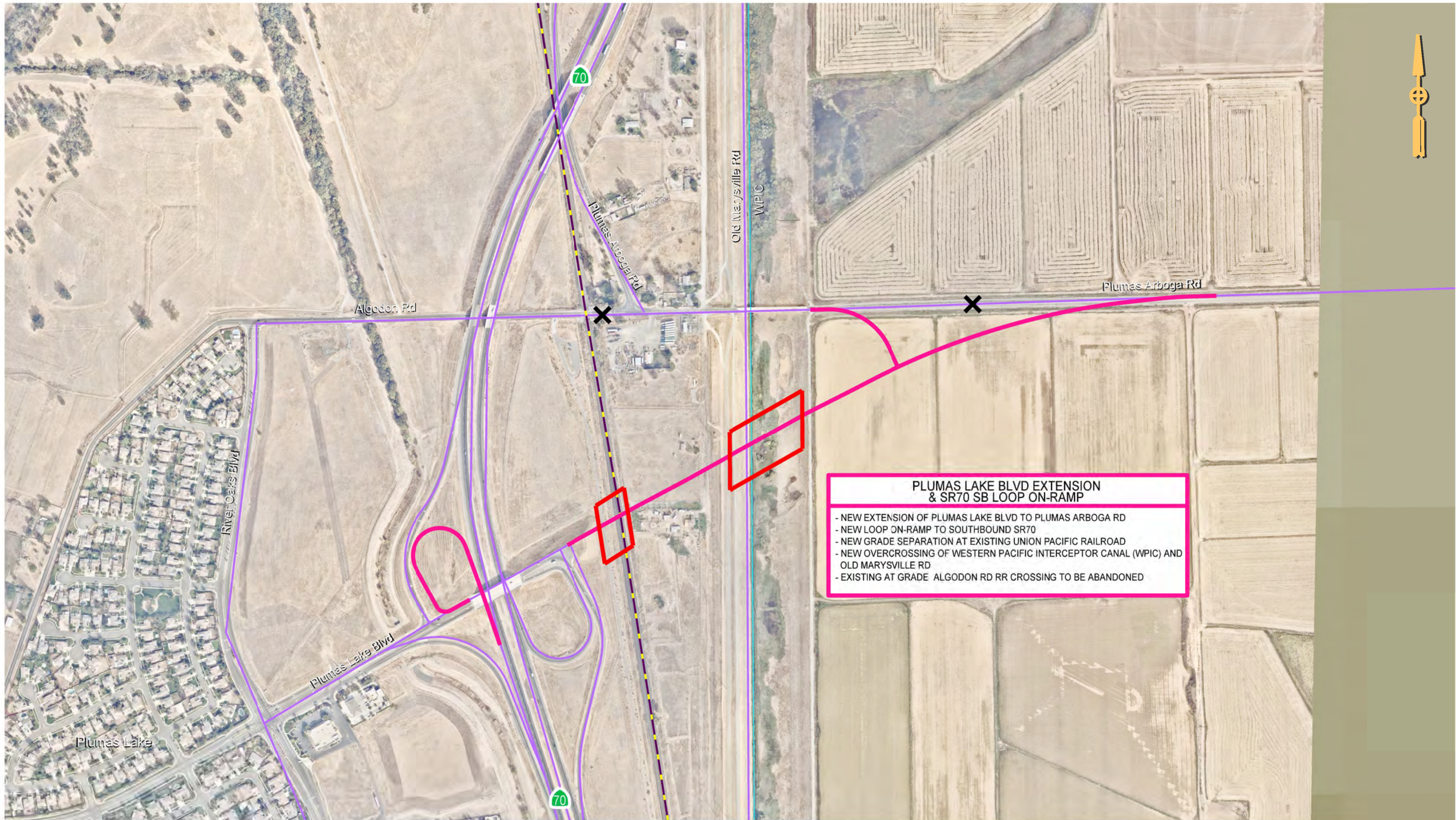


COMPREHENSIVE IMPLEMENTATION STRATEGY GOALS

As stated in their Joint Exercise of Powers Agreement, the overarching purpose of the South Yuba Transportation Improvement Authority (SYTIA) is to: *“Consider, evaluate, construct, and make associated decisions regarding proposed transportation improvements located in the southern portion of the County and within the limits of the City and more specifically to address the needed alternate route to Highway 65 (commonly referred to as the Wheatland Bypass), as well as a new freeway interchange in the vicinity of South Beale Road and a new connector road between South Beale at Highway 65 and Plumas Lake Blvd at Highway 70”*. To implement this purpose, the SYTIA is embarking on a Comprehensive Implementation Strategy (CIS). The following set of goals has been developed for the implementation strategy.

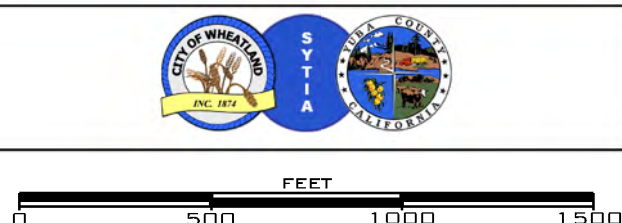
1. Create a long-term implementation plan that preserves a viable easterly realignment of State Highway 65 that meets policies and objectives of the Yuba County and City of Wheatland General Plans.
2. Develop near term projects with independent utility that address current and near term needs, while preserving the ability to have a realigned SR 65 in the future, once a continuous highway realignment can be accomplished.
3. Establish a second access to the Sports-Entertainment Complex from SR 65 in the short term, without reliance on a full SR 65 realignment; and include options for an extension to Forty Mile Road.
4. Establish a local road connection from Riosa Road to Spenceville Road that would divert traffic from SR 65 in Wheatland in the near term and could be converted to a realigned SR 65 in the future.
5. Create an implementation plan to complete the State Route 70/Plumas Lake Blvd interchange and associate connector roadway improvements to Plumas Arboga Road.
6. Consider opportunities to highlight or add project features to address local, regional, statewide and/or federal goals to attract and leverage funding from additional sources.
7. Synchronize planned projects in the CIS, Caltrans SHOPP, Caltrans Minor Project Program, and by developers to minimize improvements in the roadway network that are later replaced by a different project.
8. By working closely with regional partners, ensure the infrastructure improvements are consistent with/included in the SACOG MTP/SCS.
9. Develop a delivery outline with cost, funding, and prioritization recommendations for the projects in the SYTIA program.

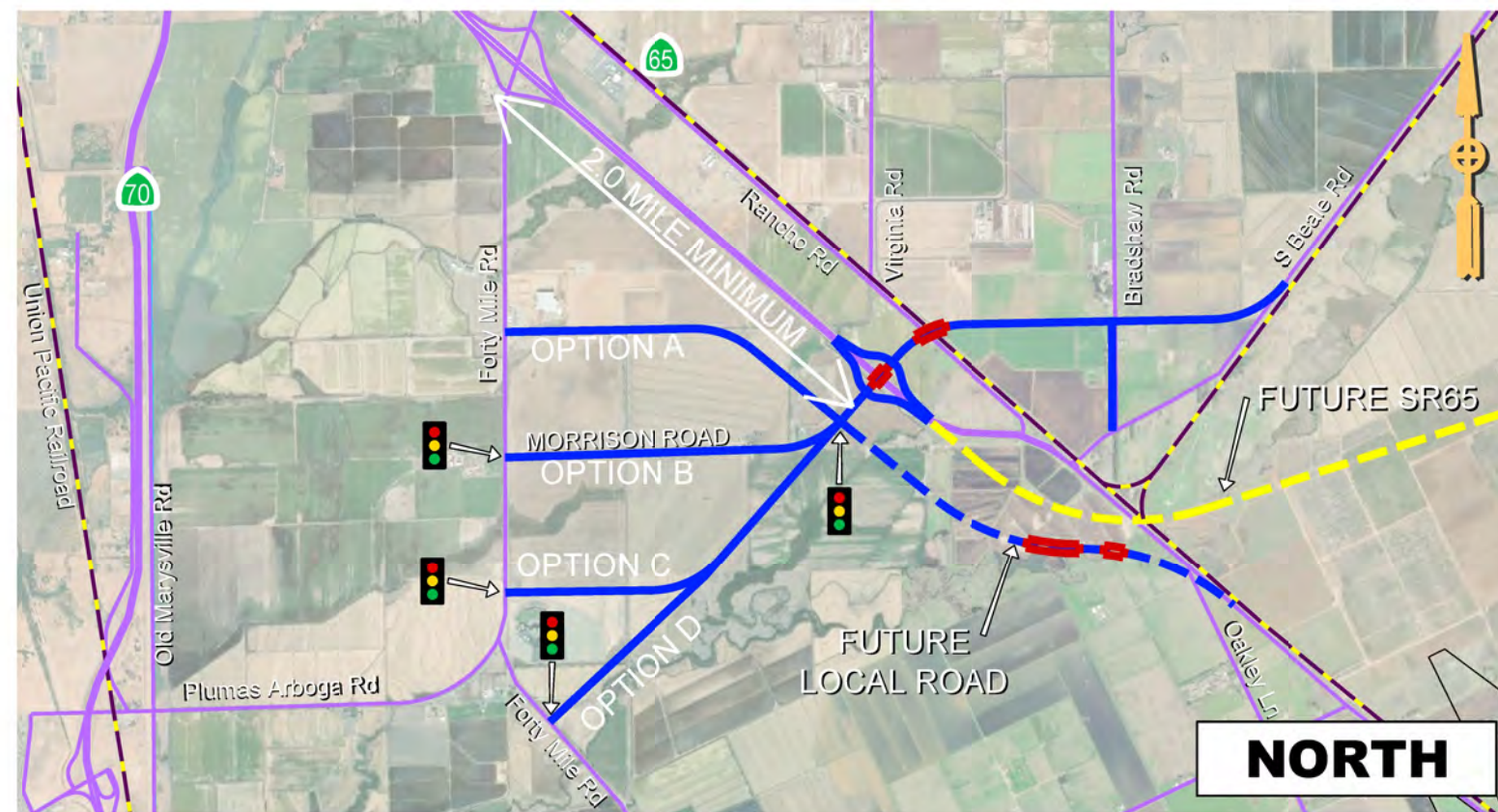
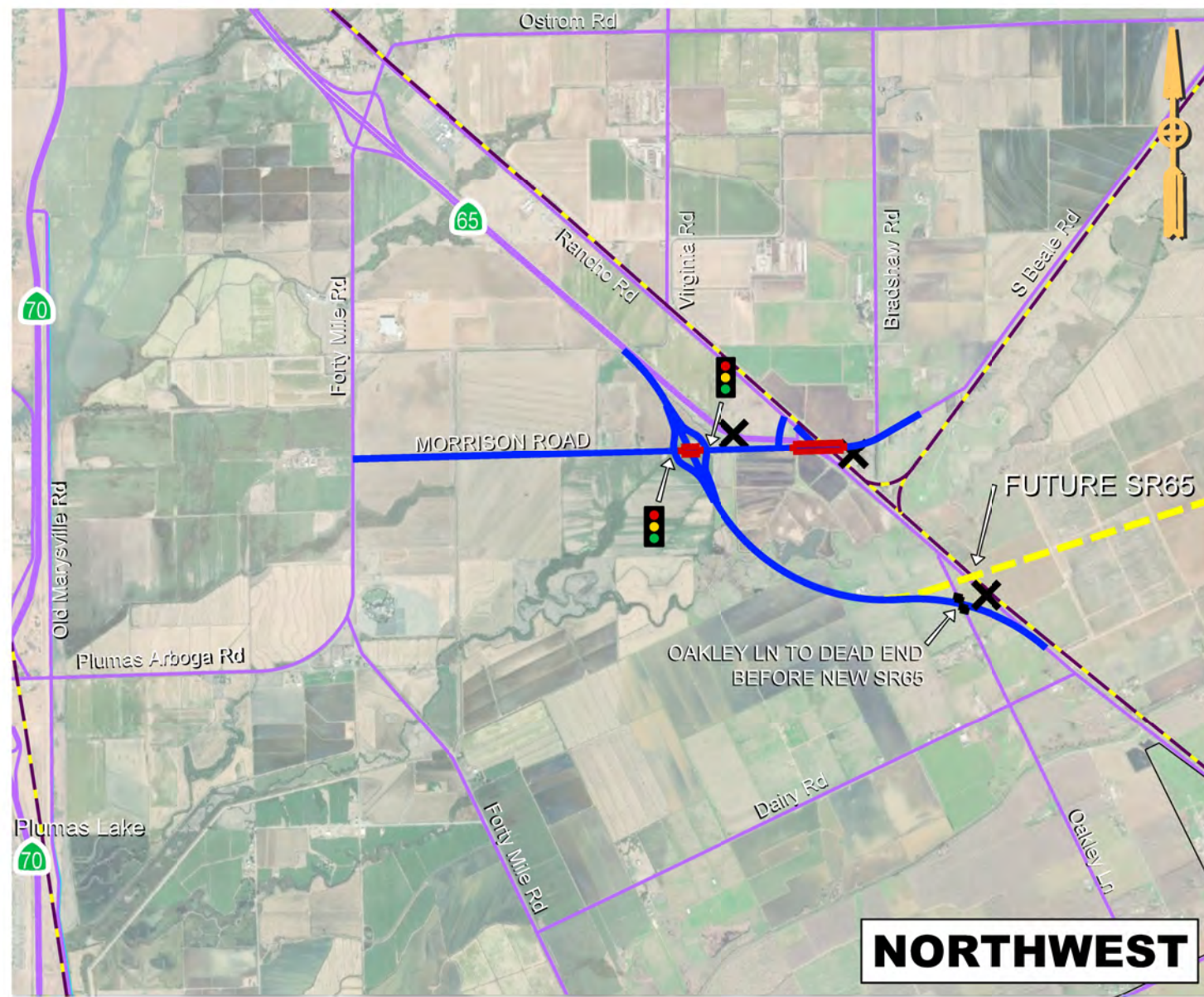




- PLUMAS LAKE BLVD EXTENSION & SR70 SB LOOP ON-RAMP
- S. BEALE RD INTERCHANGE WITH EXTENSION TO FORTY MILE RD
- EAST WHEATLAND EXPRESSWAY
- SR65 REALIGNMENT
- EXISTING RAILROAD
- PSR/PR PROJECT STUDY REPORT/ PROJECT REPORT

- EXISTING ROADS
- BRIDGES / OVERHEADS
- TRAFFIC SIGNALS
- EXISTING ROAD TO BE ABANDONED
- STATE ROUTE 65, MINIMUM CURVE RADIUS = 5,000 FT
- INTERCHANGE, MINIMUM RAMP CURVE RADIUS = 350 FT
- LOCAL ROADS, MINIMUM CURVE RADIUS = 2,000 FT





S. BEALE RD INTERCHANGE WITH EXTENSION TO FORTY MILE RD

- INTERCHANGE CONFIGURATION TO BE DETERMINED AS PART OF CALTRANS PROJECT STUDY REPORT PROGRESS
- ALTERNATIVES FOR CONSIDERATION INCLUDE (BUT NOT LIMITED TO) NORTHWEST, NORTH, CENTRAL
- LOCATION AND CROSS SECTION OF S. BEALE RD EXTENSION TO FORTY MILE RD TO BE DETERMINED AS PART OF INTERCHANGE STUDIES

- PLUMAS LAKE BLVD EXTENSION & SR70 SB LOOP ON-RAMP
- S. BEALE RD INTERCHANGE WITH EXTENSION TO FORTY MILE RD
- EAST WHEATLAND EXPRESSWAY
- SR65 REALIGNMENT
- EXISTING RAILROAD
- PSR/PR PROJECT STUDY REPORT/PROJECT REPORT

- EXISTING ROADS
- BRIDGES / OVERHEADS
- TRAFFIC SIGNALS
- EXISTING ROAD TO BE ABANDONED
- STATE ROUTE 65, MINIMUM CURVE RADIUS = 5,000 FT
- INTERCHANGE, MINIMUM RAMP CURVE RADIUS = 350 FT
- LOCAL ROADS, MINIMUM CURVE RADIUS = 2,000 FT

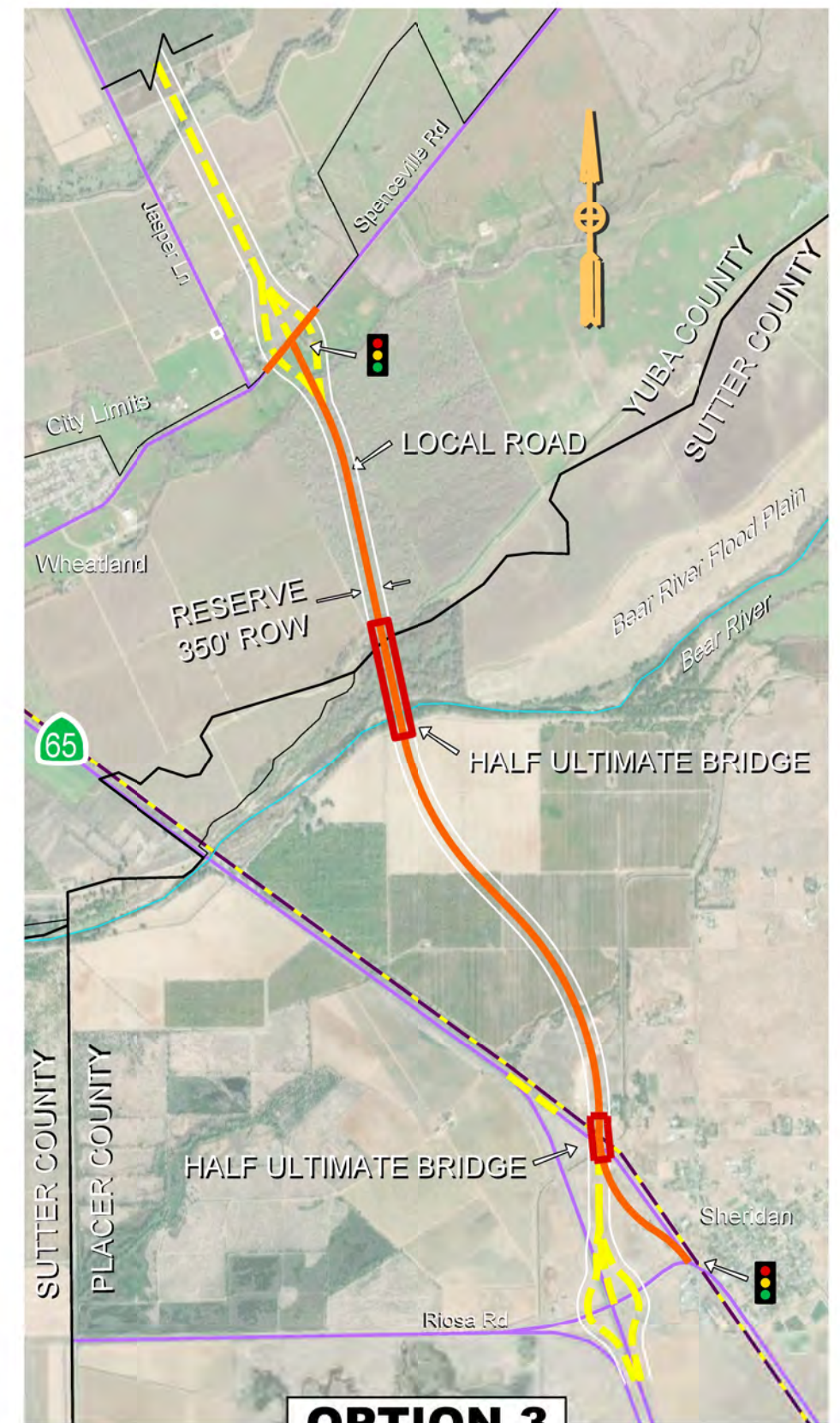
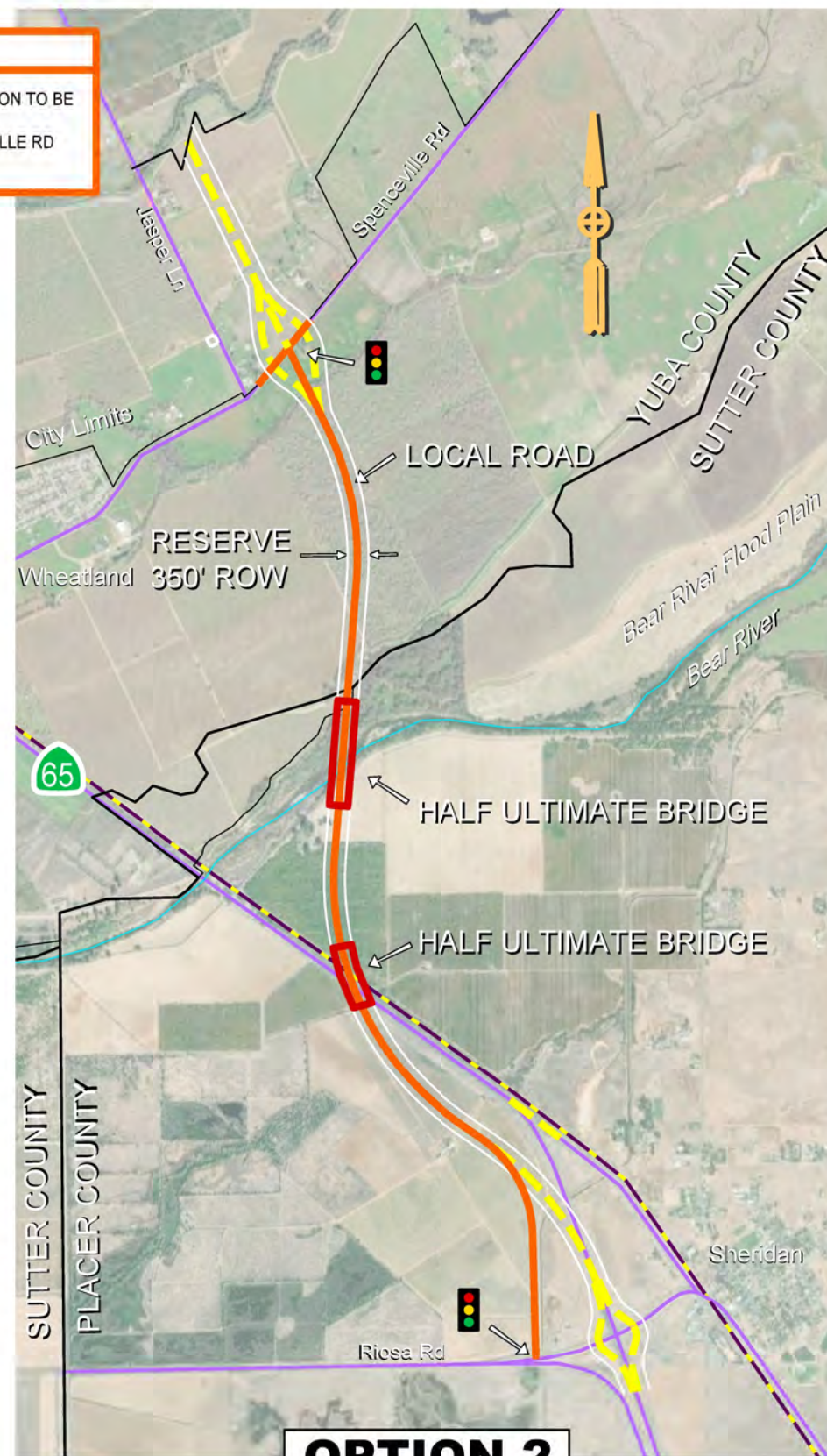
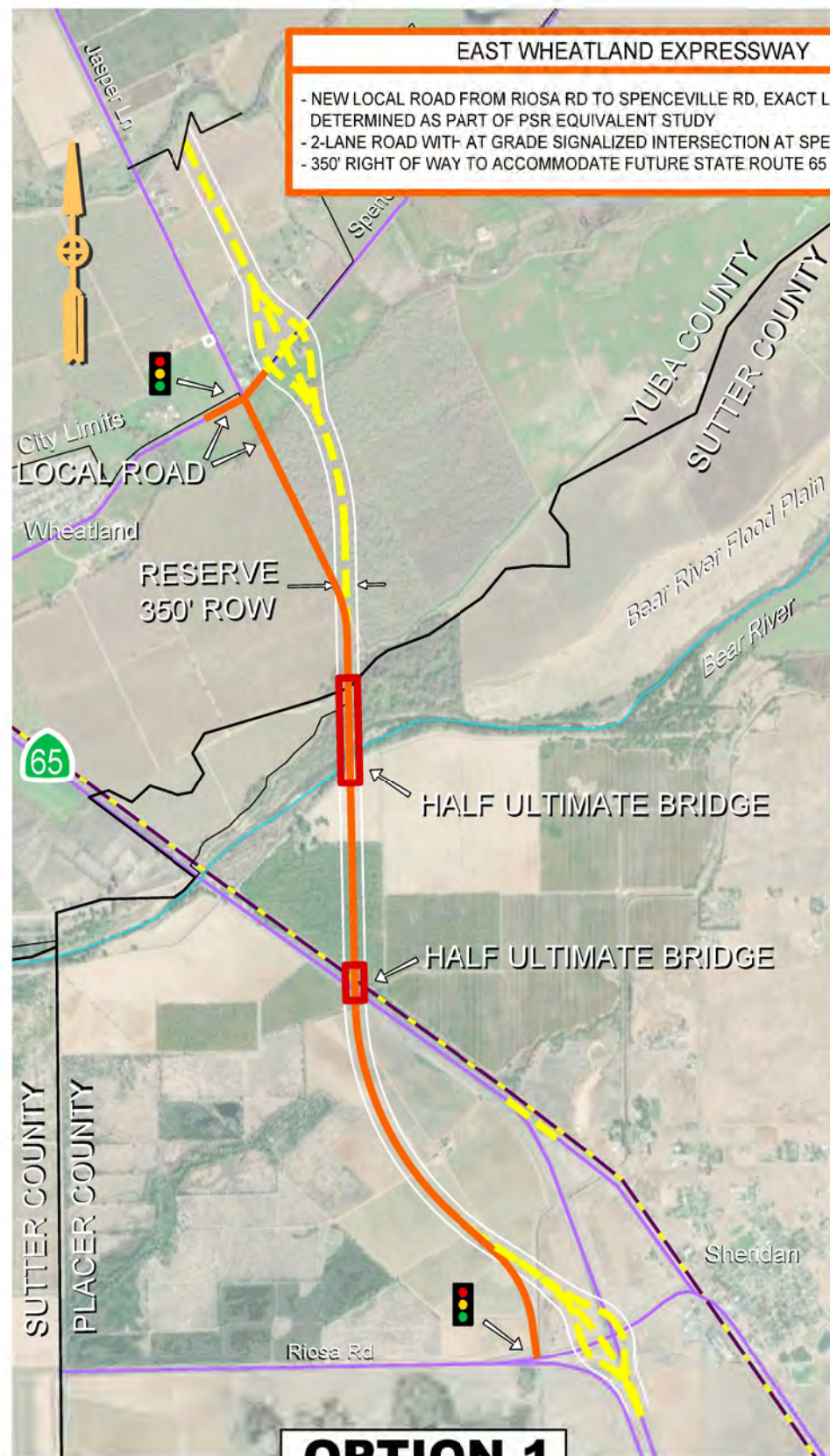


SYTIA COMPREHENSIVE IMPLEMENTATION STRATEGY

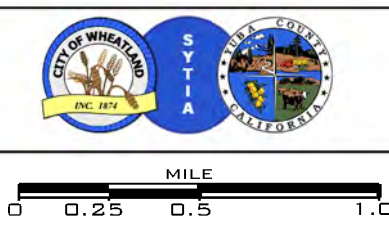
EXHIBIT 3 OF 5

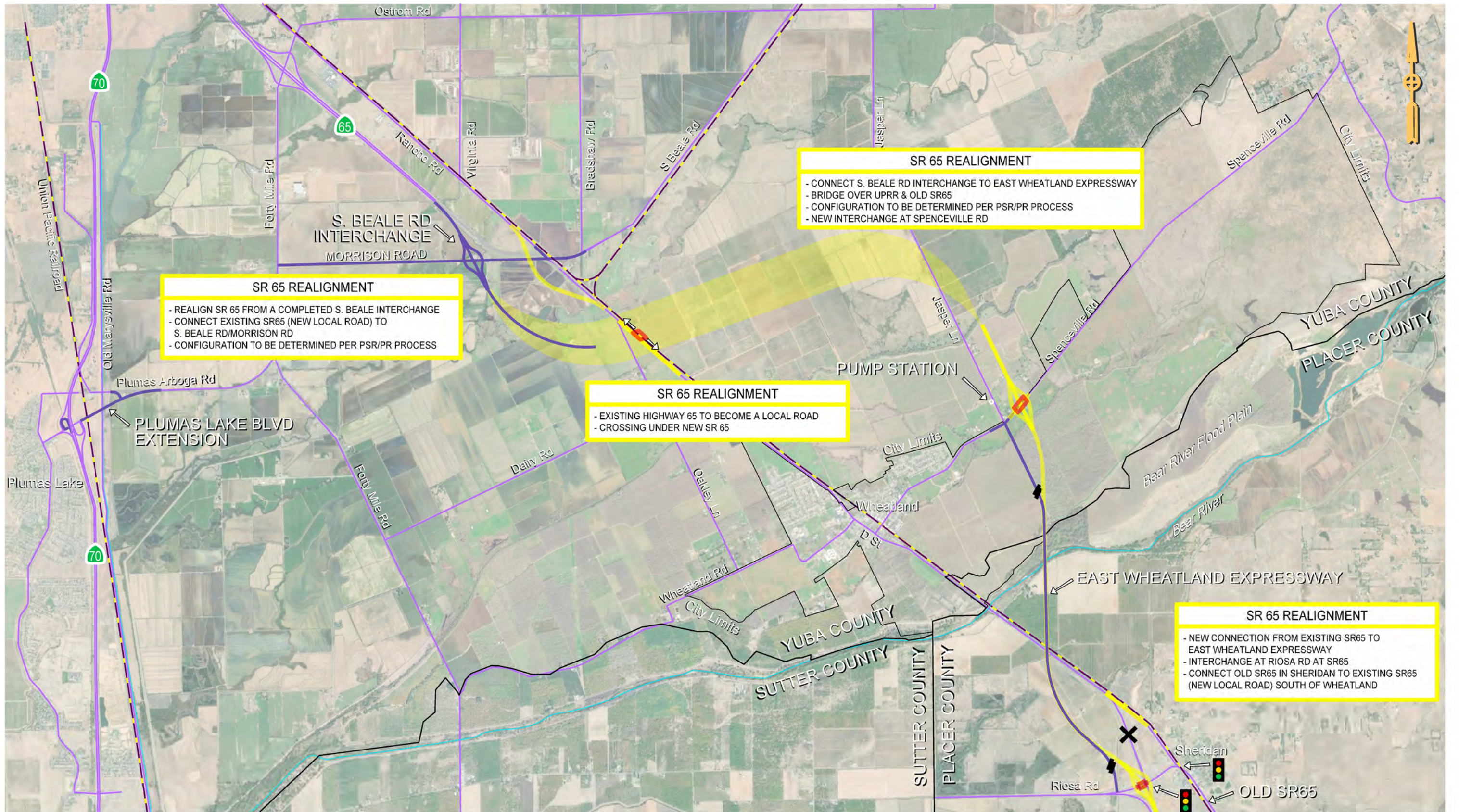
EXHIBIT
**ALTERNATIVES FOR S. BEALE RD INTERCHANGE WITH
EXTENSION TO FORTY MILE RD**

JANUARY 27, 2020



- | | |
|--|---|
| <ul style="list-style-type: none"> PLUMAS LAKE BLVD EXTENSION & SR70 SB LOOP ON-RAMP S. BEALE RD INTERCHANGE WITH EXTENSION TO FORTY MILE RD EAST WHEATLAND EXPRESSWAY SR65 REALIGNMENT EXISTING RAILROAD PSR/PR PROJECT STUDY REPORT/PROJECT REPORT | <ul style="list-style-type: none"> EXISTING ROADS BRIDGES / OVERHEADS TRAFFIC SIGNALS EXISTING ROAD TO BE ABANDONED STATE ROUTE 65, MINIMUM CURVE RADIUS = 5,000 FT INTERCHANGE, MINIMUM RAMP CURVE RADIUS = 350 FT LOCAL ROADS, MINIMUM CURVE RADIUS = 2,000 FT |
|--|---|





PROPOSED TO BE BUILT BEFORE SR 65 REALIGNMENT
 SR65 REALIGNMENT
 EXISTING RAILROAD
 PSR/PR PROJECT STUDY REPORT/ PROJECT REPORT

EXISTING ROADS
 BRIDGES / OVERHEADS
 TRAFFIC SIGNALS
 EXISTING ROAD TO BE ABANDONED
 STATE ROUTE 65, MINIMUM CURVE RADIUS = 5,000 FT
 INTERCHANGE, MINIMUM RAMP CURVE RADIUS = 350 FT
 LOCAL ROADS, MINIMUM CURVE RADIUS = 2,000 FT



SYTIA COMPREHENSIVE IMPLEMENTATION STRATEGY
 EXHIBIT 5 OF 5
 EXHIBIT
SR 65 REALIGNMENT
 JANUARY 27, 2020