



## CITY OF MARYSVILLE

### COMMUNITY PROFILE

The City of Marysville lies in California's Central Valley approximately 40 miles north of the California state capital in Sacramento where State Highways 70 and 20 intersect. Considered the gateway to the historic Mother Lode, it sits at the confluence of the Feather and Yuba Rivers.

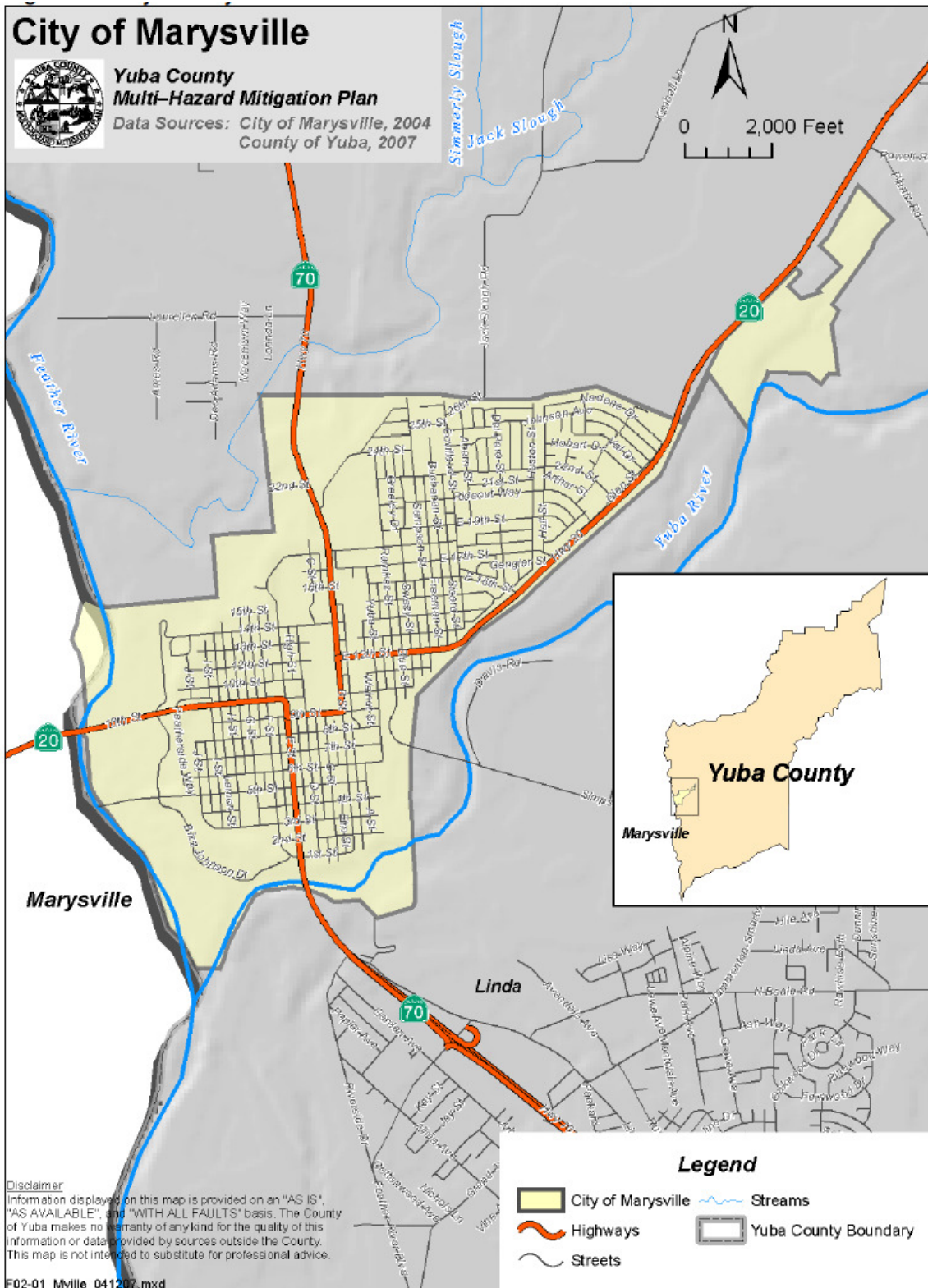
Marysville serves as the county seat for Yuba County, which was recognized as the fastest growing county in the State of California in 2006. The City is the hub of business and industry in the County, housing critical infrastructure and essential services such as hospital and medical care, headquarters for the Yuba County local government, courts, school district administration, utilities and CalTrans Region 3. There is a well-established medical community that includes a hospital, medical center and a state-of-the-art cancer facility in the City.

The City was established as a critical location on roads, rivers, streams and railroad for those in search of the precious gold buried in the foothills and waterways. As a result of fire and redevelopment, many buildings from Marysville's heyday have been lost over the years. Those that survive are a constant reminder of Marysville's golden history and proof that Marysville is still the "Gateway to the Gold Fields". They attract tourists who want to see examples of the Gold Rush town's architecture and rich cultural heritage. The levee system was constructed to keep the floodwater and sediment debris from impacting life in the City. This levee system constructed to provide protection for the residents of Marysville has not failed in over 150 years. The City has kept a constant vigil maintaining the structure that continues to provide protection from the seasonal flood waters that have dealt blows to the residents of the south county with levee failures in 1986 and 1997.

### **Geopolitical Jurisdiction**

The City of Marysville City Council consists of five members, a mayor and four council members, duly elected by the qualified electors of the city. The council members are each elected to staggered four-year terms with elections held every two years. To be qualified, a candidate for council member must be an elector of the city at the time of filing their nomination papers.

City of Marysville



## **GEOGRAPHY AND CLIMATE**

The City of Marysville, the county seat of Yuba County, is located in California's Central Valley, approximately 40 miles north of the state capital in Sacramento. The City has a total area of 3.6 square miles, 3.5 of which is land and 0.1 of which is water. It is located at 39° 8' 58" N, 121°35' 8" W. The City of Yuba City, in Sutter County, is Marysville's neighbor to the west, across the Feather River. Marysville is only two hours away from San Francisco to the west and Lake Tahoe to the east.

The City of Marysville is located at the confluence of the Yuba and Feather Rivers. The City, an urban area of approximately 1,500 acres, is ringed by 7.5 miles of levee along the south bank of the Jack and Simmerly Sloughs, the east bank of the Feather River, and the north bank of the Yuba River.

With an average elevation of 65 feet above sea level, the City is essentially flat, except for natural drainage that has changed with development and the levee construction. The soil is predominantly alluvial. It includes a mix of loam, clay and sand, according to the Soil Survey of Yuba County, California, published by the United States Department of Agriculture and the Natural Resources Conservation Service.

A one-time swamp was converted into a scenic lake in the north central part of the town and named Ellis Lake after the financier, W. T. Ellis, a town merchant around 1900. Ellis Lake still serves as a detention pond for drainage water that is pumped into the rivers during sustained periods of precipitation.

Marysville has a Mediterranean climate with typically mild winters and warm to hot summers. The usual rainy season stretches from November to May with the bulk of the annual average total rainfall of 22.8 inches in December, January and February. The average maximum January temperature is 54 degrees, while the average high temperature in July is 96.3 degrees. Freezing temperatures and snow are rare, but in December 1873, snow fell to a depth of one foot on the streets of Marysville. (Thompson & West, 1879; transcribed by Hahn & Sedler, 2003) The climate for Marysville is moderate with no real extremes during the year. Temperatures rarely go below freezing or over 100 degrees.

### **History and Environment**

The Marysville area was part of John Sutter's Mexican land grant known as New Helvetia. Theodore Cordua, a Mexican citizen originally from Germany, built a rancho on land leased from Sutter in 1842. He raised livestock and built a home and an adobe trading post that sold goods to trappers and early settlers. Cordua, who named his settlement New Mecklenburg after his native town, secured more land from the Mexican government in 1844.

The location of the ranch was central to the riverboats and wagons heading to the goldfields during the Gold Rush. The ranch became a final port for riverboats from San Francisco and Sacramento bringing supplies and passengers, hence the name "Gateway to the Gold Fields". In 1850 a surveyor was commissioned by the landowners to create a plan for the town. As the plans were drawn, newcomers arrived as did property deeds and land purchases for the vibrant, growing town. The city government was established and the name "Marysville" was chosen for Covillaud's wife, Mary Murphy, a survivor of the ill-fated Donner Party.

The City of Marysville, established in 1850 and incorporated by the State legislature in 1851, is one of California's original charter cities. As permanent buildings replaced the tent city, Marysville became the third largest city in California by 1852. The once quiet township boasted a population of nearly 10,000 by 1853 and schools and churches were founded to support the ever growing community. The Chinese began to refer to Marysville as the Third City because it was the third city they came to after San Francisco and Sacramento during the Gold rush.

The City of Marysville became a bustling town as businesses were established to supporting the miners and prospectors. Beautiful brick buildings and majestic home s were erected and today are still standing as monuments of a robust time in history. In 1857, over \$10 million in gold was shipped from Marysville's banks to the U.S. Mint in San Francisco. But the golden era of the Gold Rush did not leave the City and the lands unscathed. Mining operations on the rivers, tributaries, and gold fields left sediment and debris with only a path to the Yuba, Feather and Bear Rivers. Little attention was paid to the impact downstream of the sediment that was occurring as a result of the mining operations. This activity and subsequent actions may have been one of the first human actions and land use policies to result in a flooding disaster.



D Street, Marysville

Sediment from hydraulic mining on the Yuba River above Marysville raised the elevation of the riverbeds in the Feather and Yuba Rivers, which made Marysville vulnerable to flooding during winter storms and spring runoff. After the Great Flood of 1853 the City and the Marysville Levee Commission constructed a levee system with riverbed sediment that still protects the City today. The rising elevation of the riverbeds made the trips up the Feather River hard to navigate until riverboats and barges were unable to make the trip to the City of Marysville.

### **Population**

The City of Marysville has a population of 12,072 people, according to the 2010 U.S. Census. Marysville has a population density of 3,367.9 people per square mile. There are 5,196 housing units at an average density of 1,449.6 per square mile. Due to the geographic constraints of the rivers and the levee system surrounding the City, the City of Marysville's population has remained relatively constant while the rest of Yuba County has seen an increase.

The racial makeup of the city is 85.76% White, 4.3% African American, 2.5% Native American, 4.1% Asian, 0.3% Pacific Islander, 10.3% from other races, and 7.4% from two or more races. 24.2% of the population is Hispanic or Latino of any race.

## **CITY OF MARYSVILLE PLANNING PROCESS**

The City of Marysville planning process was conducted as part of the Yuba County Hazard Mitigation Project and involved the collaboration of numerous governmental entities. This section describes the planning process from the perspective of the City of Marysville and includes descriptions and accounts of planning meetings that the City participated in or

conducted in the planning process. In addition to these meetings, information gathered by throughout the course of the project by and for other special districts within Yuba County was incorporated into the Marysville annex where appropriate. For a complete description of the planning process undertaken by the Yuba County Hazard Mitigation Project, refer to Element A of the Base Plan.

The City of Marysville was a major participant in the Yuba County Multi-Hazard Mitigation Project planning process. Marysville has participated in Planning Team meetings and has met individually with Yuba County Hazard Mitigation Project staff and Howell Consulting Team. The city risk assessment was implemented in collaboration with county Stakeholder meetings utilizing past disaster information and studies and review of current activities.

Representatives from the City (City Manager, Fire Chief, Police Chief, Public Works Director, and other department heads) regularly met with Marysville hazard mitigation planning team staff throughout the planning process to research, identify resources and collaborate on development and writing of the Yuba County and Marysville hazard mitigation documents. The City representatives participated in the planning process by providing information unique and specific to the City, in addition to information of benefit to the writing of the Yuba County Base Plan. The result of these meetings provided a comprehensive picture of the hazards and risks facing the City, the vulnerability of assets, and identification of effective mitigation strategies to address potential hazards through partnerships created through the planning process. The outcome of this collaboration provided for the development of the Marysville Community Profile Annex.

Participation in stakeholder meetings provided technical and program information for the development of the Marysville Community Profile and the collaboration required for development of a comprehensive multi-jurisdictional base mitigation plan. The meetings table below provides summaries of those meetings at which Marysville participated. An effort to encourage public participation and promote awareness of hazard mitigation planning process was undertaken through the City participation at all Community public forums and other public opportunities. For more information on public participation refer to Element A of the base plan.

<b>Meeting Number</b>	<b>Title</b>	<b>Date</b>	<b>Location</b>
1	Kick-off/Planning Team roles and expectations	10/30/13	Marysville
2	Hazard Identification/Analysis, Vulnerabilities, General Update	03/27/14	Marysville
3	Mitigation Strategy Review and Development	05/14/13	Marysville
4	Jurisdictional Site Visits, Mitigation Strategy, General Update	5/14/14	Marysville;
5	Final Draft Briefing	08/07/14	Marysville; Teleconference

6	Final Comments	11/21/14	Email
---	----------------	----------	-------

## HAZARD IDENTIFICATION AND PROFILES

Marysville’s Planning Team identified hazards that affect the city and developed hazard profiles based upon the countywide risk assessment and past events and their impacts. Definitions for the rankings used can be found in Element B: Hazard Identification and Risk Assessment. As a result of the meetings, public discussion, and input from stakeholders, the hazards were prioritized and are noted in the table below.

**City of Marysville—Hazard Profiles**

Hazard	Probability of Occurrence	Geographic Extent	Potential Magnitude	Significance
Earthquake	Occasional	Limited	Catastrophic	Medium
Flood	Likely	Extensive	Catastrophic	High
Severe Weather	Highly Likely	Significant	Critical	High
Wildfire	Likely	Significant	Critical	Medium
Volcano	Unlikely	No Physical Damage	Negligible	Low

### CITY OF MARYSVILLE SPECIFIC HAZARD PROFILE

#### **Floods**

The City of Marysville historically sat on a bluff at the confluence of the Yuba and Feather Rivers, its elevation protecting it from the rising rivers. The Marysville Levee system has prevented major flooding within the City of Marysville since its construction. High water events in 1955, 1986, and 1997 led to the evacuation of the City and concerns about the possibility of a levee failure, but breaks in other locations along the Yuba and Feather Rivers relieved the pressure on the Marysville Levee system in each instance. Former Marysville Levee Commissioner W. T. Ellis noted during high water periods in the early 20<sup>th</sup> century that the only location of concern during those events was the southern section of the levee system; the same area that the historic Yuba River Channel once occupied. This section of levee has been prone to seepage issues in the past.

#### **Marysville Ring Levee Work Underway**

The City of Marysville, in partnership with the Yuba County Water Agency and the U.S. Army Corps of Engineers, is constructing repairs and improvements to the 7.6 mile ring levee that surrounds the City. Although a Marysville levee has not failed in 135 years, four miles of the levee system need critical repairs. A four phase, \$100 million project to prevent seepage through the levee, or under-seepage below the levee, is underway with a goal for completion in 2013. More than \$10 million in stimulus funds approved by Congress in 2009, and a \$2 million line of credit from the Yuba County Water Agency, helped jump start work on Phase I in 2010. A large share, approximately \$90 million, will be covered by current and future federal funding.

## **VULNERABILITY ASSESSMENT**

The vulnerability assessment analyzes the population, property, and other assets at risk to natural hazards. This section lists Marysville's assets at risk to natural hazards, including critical facilities and infrastructure; historic, cultural, and natural resources; and economic assets. It discusses the impacts that occurred in past events and vulnerability to specific hazards ranked of medium or high significance.

### **Asset Inventory**

The table that follows lists the critical facilities and other community assets identified by Marysville's Planning Team as important to protect in the event of a disaster.

City of Marysville —Critical Facilities and other Community Assets

Name of Asset	Asset Description	Replacement Value (\$)	Contents Value (\$)
City Hall & Police Station	Concrete	3,165,128	288,816
Fire Station	Concrete	1,401,747	236,232
Drill Tower	Wood frame	98,931	
Shop	Wood frame	45,591	
Public Works Bldg	Concrete	496,535	71,088
Mobile equipment storage	Steel	219,647	10,019
Paint storage shed	Wood frame	26,625	24,255
Storm water plumbing bldg	Concrete	33,280	98,178
Primary sediment tank	Concrete	492,058	
Sewage treatment plant	Steel frame	1,971,974	294,283
Digestion tank A	Concrete	147,617	
Digestion tank B	Concrete	147,617	
Chlorinator bldg		86,109	34,652
Sewage lift station		45,558	
Ellis sewage lift station		20,954	
Ellis Yuba sq pump/sewage station	Concrete	651,015	288,761
Ellis storm water pump station	Concrete	73,809	98,178
2 <sup>nd</sup> chlorinator bldg	concrete	984,116	231,009
17 <sup>th</sup> storm water pump bldg		49,206	144,381
Museum annex	Wood frame	39,923	23,102
Mary Aaron museum	masonry	318,767	103,954
9 <sup>th</sup> sprinkler bldg		10,246	57,752
Irrigation pump house		21,904	
Ellis Lake comfort station		34,587	
Comfort station		59,191	
Cat shed		31,259	
Spectator shelters	Steel	40,847	
BBQ shelter	Steel	2,283	
Pavilion stage cover	Steel	88,570	
Swimming pool			41,328
Restrooms arena		33,922	
River Front Park Snack Bar		66,168	
Restrooms Lions Grove		33,922	
Storm water pump station		56,872	
Irrigation pump bldg		30,618	
Plumas Golf Club	Wood frame	1,533,213	
Cast shed		22,285	5,775
Plumas Lake Golf Pro Shop	Wood frame	156,824	
Implement buildings		44,356	5,920
Comfort station boat dock		59,191	
Comfort station soccer		59,191	23,102
Comfort station Lions Grove		34,581	
Comfort station		71,484	
Comfort station portable		71,484	
Rideout sewage lift station		649,828	288,761
Bryant field lift station		20,538	

Name of Asset	Asset Description	Replacement Value (\$)	Contents Value (\$)
Secondary sedimentation station		307,536	86,628
Misc/all locations			60,642
PW equipment storage		165,815	3,867
12 <sup>th</sup> St duplex		81,031	
Bryant field stadium		2,138,399	
Equipment			884,445

The City of Marysville is responsible for the protection of the infrastructure within its jurisdiction. The City is financially responsible for their assets during a hazard event. The function of the City is to provide overall emergency management during disasters. Other special districts and government agencies also have assets within the City of Marysville, and would be responsible for any costs associated with a hazard event that affects their infrastructure. Some of these assets include:

- United States Post Office
- California Department of Transportation District 3
- State of California Superior Court
- State of California Board of Corrections – Parole Office
- County of Yuba Government Center
- Yuba County Courthouse
- Sutter-Yuba Juvenile Hall
- Yuba County Library
- Rideout Hospital
- Medical Clinics
- DaVita Dialysis
- Yuba County Office of Education
- Marysville Joint Unified School District Office
- Marysville High School
- Marysville Charter Academy for the Arts
- Anna McKenney Intermediate School
- Covillaud Elementary School
- Adult Day Care Centers
- Senior Assisted Living Facilities
- Pacific Gas & Electric Company
- AT&T Communications
- Union Pacific Railroad
- Yuba Sutter Disposal, INC
- Yuba-Sutter Transit



### Historical Assets

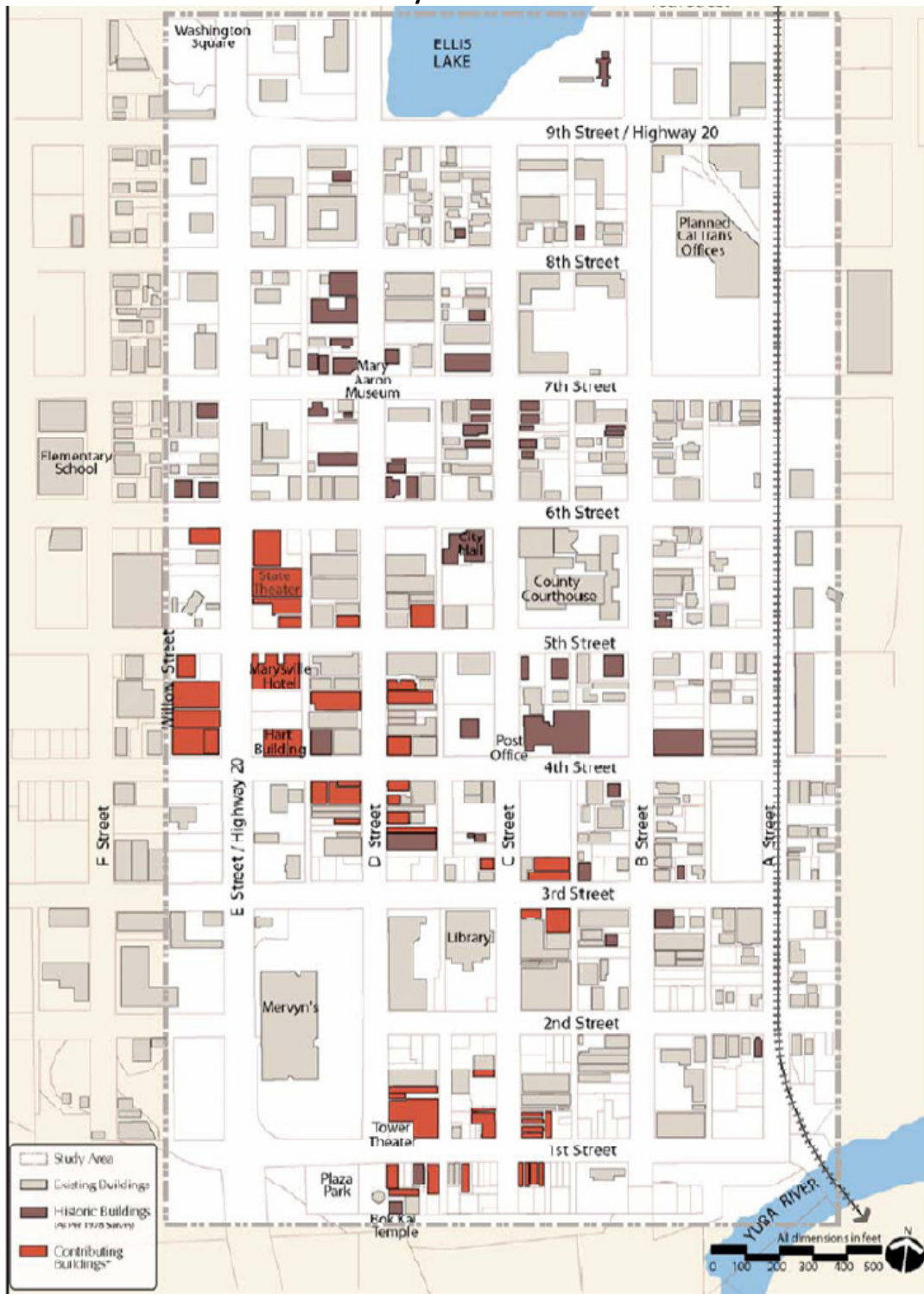
The City of Marysville was established in 1850 as a critical location on roads, rivers, streams, and railroad for those in search of the precious gold buried in the foothills and waterways. By 1853, it had become a bustling town of nearly 10,000 with businesses established to support the miners and prospectors. As a result of fire and redevelopment, many buildings from Marysville's heyday have been lost over the years. Those that survive are a constant reminder of Marysville's golden history and proof that Marysville is still the "Gateway to the Gold Fields". They attract tourists who want to see examples of the Gold Rush town's architecture and rich cultural heritage.

The architectural design and period influence seen in historic buildings remaining in Marysville reflect the French colonial design, which was introduced to the City in the early 1850's. Many historical buildings and structures were lost to floods, fires, and redevelopment projects. The aging infrastructure of this once booming City has been the focus of improvement projects and community concerns. The historic buildings provide a constant reminder to residents and visitors of Marysville's golden history as the "Gateway to the Gold Fields." The picture on the following page shows the historic structures in Downtown Marysville.

### Historic Marysville City Cemetery



**Downtown Marysville Historical Structures**



\* Historic buildings designated as contributing buildings were also determined by the the 1978 Historic Building Survey

### ESTIMATING POTENTIAL LOSSES

The table below shows Marysville’s total exposure to hazards in terms of population and the number and values of structures. Yuba County Assessor’s data was used to calculate the improved value of parcels. GIS was used to quantify the number and value of structures in the City. More information on how these estimates were calculated and other potential loss information can be found in the Vulnerability Assessment section Element B.

**City of Marysville—Exposure to Hazards**

<b>Marysville</b>	<b>Population</b>	<b>Structures</b>	<b>Value</b>
Incorporated Area	12,465	3,606	\$471,880,611

Impacts of past events and vulnerability to specific hazards are summarized in the following.

#### **Floods**

The impact of damage resulting from the flooding hazard, as mentioned, will vary. Most damage resulting from rising water will inundate residences and buildings, damaging infrastructure and critical facilities. The loss of ingress and egress by the population in the affected areas will impact ability of emergency response and limit capabilities. Damage from flooding can range from minimal, where the damage to an individual home may be on the order of a few thousand dollars to the complete loss of a building or loss of life from the inability to evacuate from the rising flood waters.

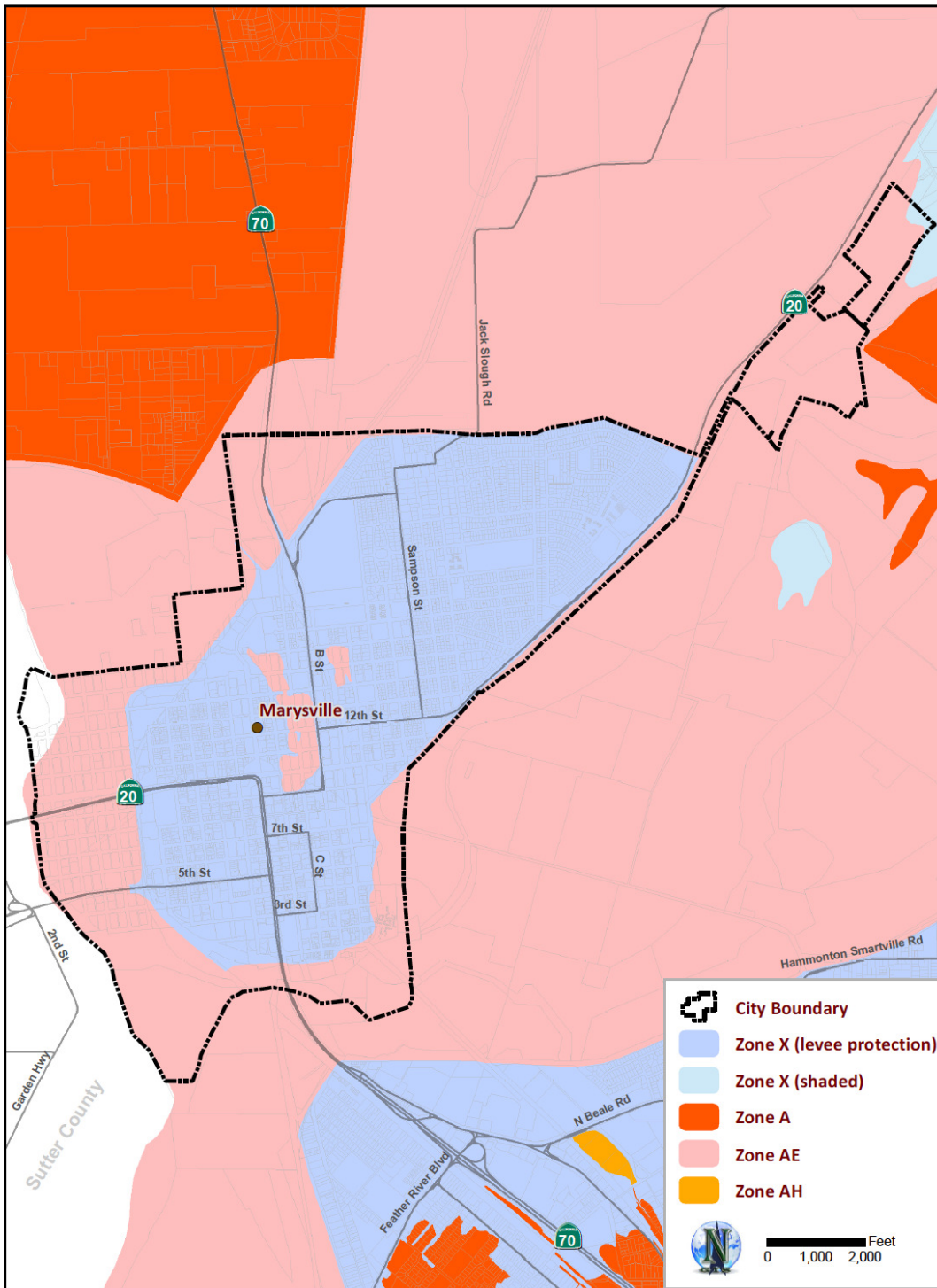


1955 Flood Surrounding the City of Marysville

Depending on the type of flooding and the ability to access the affected areas, the flood hazard event can range from hours (flash flooding) to several days or weeks (flooding from standing water/levee break). The ring levee surrounding Marysville may contribute to holding water within the levee structure in a flood event. The long-term effects of flood damage can span months to decades as evident in the 1986 Flood and levee failure devastating the community of Linda which was once a vital retail center of business.

If a levee failure were to occur, it would be catastrophic to the City. The ring levee system which protects Marysville from rising river waters would act as a bowl, ensuring the City would be inundated by water flowing through the broken levee.

FEMA Flood Zones  
Marysville



Neuvert GIS Services, LLC

Sources: County of Yuba; FEMA; SACOG; ESRI; USGS; NOAA

HOWELL CONSULTING

**Future Development Trends**

**City of Marysville—Change in Population and Housing Units, 2000-2010**

2000 Population	2010 Population	Difference in Population	2000 Housing Units	2010 Housing Units	Difference in Units
12,268	12,072	196 less than the year 2000	4,999	5,196	197

Future development within the City of Marysville is primarily infilling of existing property within the existing City limits. The redevelopment in some areas of the City is replacing old structures with newer structures, increasing the value of these properties. The result of this is the possibility of an increased cost should a major flood event, such as a levee failure was to occur.

**Bounce Back Strategy**

Encircled by rivers and levee systems, the community could not match the unimpeded growth available to Yuba City, and Marysville businesses soon began to pull up stakes and relocate across the river, starting a slow, steady decline in the commercial fortunes of the community. In the upcoming year, the two remaining new car dealerships will relocate across the river and Marysville will be without a new car dealership for the first time in more than 80 years. There are five distinct areas of the community that are particularly significant targets of opportunity to focus attention because of their potential for economic growth. Those are:

1. The Lake District, including all the area along the shore of Ellis Lake, from Ninth Street on the south to 14th Street on the north, and B and D Streets for that entire distance. Ellis Lake is the signature amenity of the city and, as such, should be regarded as prime commercial and residential lands.
2. The River District, the entire riverfront area including the levee and beyond, into the inundation areas along the Feather River. Unquestionably difficult to develop, but undeniably underutilized as an economic contributor to the community.
3. The Medical Arts District surrounding the Fremont Rideout Hospital by one or more blocks in each direction.
4. The Highway 70/E Street Corridor, stretching from the bridge at the city limits on the south to Tenth Street on the north.
5. The Historic Downtown District, encompassing B, C and D Streets and all cross streets from First Street to Eighth Street.

**CAPABILITY ASSESSMENT**

Capabilities are the programs and polices currently in use to reduce hazard impacts or that could be used to implement hazard mitigation activities. The assessment is divided into five sections: regulatory, administrative and technical, fiscal, outreach and partnerships, and other mitigation efforts.

**Regulatory Capability**

The Table below lists planning and land management tools typically used by local jurisdictions to implement hazard mitigation activities and indicates those that are in place in Marysville.

**City of Marysville—Regulatory and Planning Capabilities**

Regulatory Tool	Yes/No	Comments
General plan	Yes	Adopted 1985
Zoning ordinance	Yes	
Subdivision ordinance	Yes	
Site plan review requirements	Yes	
Growth management ordinance	No	
Floodplain ordinance	Yes	Title 20 Floodplain Management
Other special purpose ordinance (stormwater, steep slope, wildfire)	Yes	
Building code	Yes	
Fire department ISO rating	Yes	
Erosion or sediment control program	No	
Stormwater management program	Yes	Plan under development
Capital improvements plan	Yes	
Economic development plan	Yes	
Local emergency operations plan	Yes	

Source: Planning Team; City of Marysville Municipal Codes

**Storm Water Management Plan (SWMP)** - The City of Marysville Storm Water Management Plan is being initiated by the City of Marysville and Yuba County to fulfill requirements of the National Pollutant Discharge Elimination System (NPDES) Phase II requirements for Small Municipal Separate Storm Sewer Systems (Small MS4's). The City of Marysville SWMP provides a plan including Best Management Practices (BMP's), measurable goals, and timetables for the implementation of the Six Minimum Control Measures required by the United States Environmental Protection Agency and the State Water Resources Control Board. This program is intended to include all of the City of Marysville's Storm Drain System. This means all public man-made facilities within the City limits which are owned, operated, maintained or controlled by the City of Marysville by which stormwater may be conveyed to natural basins, detention basins, constructed wetland, artificial channels, curbs, gutters, ditches, sumps, pumping stations, storm drain inlets and storm drains.

**Administrative and Technical Capability**

The table that follows identifies the personnel resources responsible for activities related to mitigation and loss prevention in Marysville. A summary of technical resources follows.

**City of Marysville—Personnel Capabilities**

Personnel Resources	Department/Position
Planner/Engineer with knowledge of land development/land management practices	City Community Development – Planning Division
Engineer/Professional trained in construction practices related to buildings and/or infrastructure	City Community Development – Planning Division; Code Enforcement

Personnel Resources	Department/Position
Full time building official	City Community Development – Planning Division
Floodplain Manager	Public Works
Emergency Manager	Police Chief
Grant writer	Various Departments

**Fiscal Capability**

The following table identifies financial tools or resources that the city could potentially use to help fund mitigation activities. There are currently no specific funding sources for hazard mitigation.

**City of Marysville—Available Financial Tools and Resources**

Financial Resources	Accessible/ Eligible to Use	Comments
Community Development Block Grants	Yes	Community Development
Capital improvements project funding	Yes	
Authority to levy taxes for specific purposes	Yes	Fire Protection Assessment
Fees for water, sewer, gas, or electric services	Yes	
Fees for new development	Yes	Fire Mitigation Fees
Incur debt through general obligation bonds	Yes	
Incur debt through special tax bonds	Yes	Requires 218 vote
Incur debt through private activities	Yes	
Withhold spending in hazard prone areas	Yes	

**Outreach and Partnerships**

**Marysville Levee Commission**

Yuba County has one levee commission. The Marysville Levee Commission is responsible for the operation and maintenance of the ring levee system that surrounds the City of Marysville. The City of Marysville works closely with the commission staff.

**Beale Air Force Base**

Marysville has the rich heritage and tradition of the United States Military as Beale Air Force Base calls Marysville home, although the base is located to the east of the city boundaries. Many of the streets in Marysville were dedicated to the men and women from Beale Air Force Base (AFB) who made significant contributions to their country, the City and the community.

**GOALS AND OBJECTIVES**

The City of Marysville adopts the hazard mitigation goals and objectives developed by the Planning Team in Element C.

**MITIGATION ACTIONS**

The Planning Team for the City of Marysville identified and prioritized (with a high, medium and low ranking) the following mitigation actions based on the risk assessment. Background

information as well as information on how the action will be implemented and administered, such as ideas for implementation, responsible office, partners, potential funding, estimated cost, and timeline also are described.

### 2014 MITIGATION ACTIONS

<b>Action:</b>	<b>#1 - Countywide Public Education and Awareness Program</b>
<b>Jurisdiction:</b>	Multi-jurisdictional
<b>Priority:</b>	High
<b>Issue/Background:</b>	The Planning Team identified the continuation and enhancement of the natural hazards education and awareness program in Yuba County to be a valuable tool for information to residents. Based on the Public participation Survey for the mitigation plan update project, online information is an effective way to disseminate information to Yuba County.
<b>Ideas for Implementation:</b>	Improved information about natural hazards may be implemented into media outlets and tools already in use by the county, such as the following: 1) a media list is compiled at the County Administration Office for distribution of fax or email information; 2) the Be Prepared Yuba website home page is updated, as needed, to include information on pertinent topics, such as Warming Centers, Heat Related Illness, All Hazards Preparedness information, etc.; The county may also work with special districts, the cities and other entities to provide awareness and education on hazards and steps to mitigate.
<b>Responsible Office:</b>	Yuba County OES
<b>Partners:</b>	Cities, Special Districts, YCWA, TRILIA
<b>Potential Funding:</b>	Federal Grants
<b>Cost Estimate:</b>	100,000
<b>Benefits: (Losses Avoided)</b>	Provides timely, accurate information to our public, both constituents and employees. Ensures consistent information flow. Improves public awareness and education.
<b>Timeline:</b>	Continuous/Ongoing/Annually

<b>Action:</b>	<b>#2 – GIS Mapping Project</b>
<b>Jurisdiction:</b>	Multi-jurisdictional
<b>Priority:</b>	High
<b>Issue/Background:</b>	Yuba County and the cities all rely upon GIS data to varying degrees and for various governmental services. As services may cross jurisdictional boundaries due to mutual aid requests and other inter-jurisdictional coordination efforts, a common base set of GIS data and systems are critical to ensuring coordinated and efficient services. Emergency response departments are all moving towards more GIS integrated operations which further necessitates the need for common and consistent GIS data and systems.
<b>Ideas for Implementation:</b>	The Yuba County IT Department operates a GIS Services Section, and the GIS Specialist position is intended to support other County department operations as well as lend support to other governmental entities within the County. Common GIS datasets are also maintained that cover geographic territory. Efforts will continue to consolidate and coordinate the development and maintenance of countywide GIS data and applications available.
<b>Responsible Office:</b>	Yuba County Community Development Agency; CRS Coordinator; Public Works

<b>Partners:</b>	Cities, Special Districts, YCWA, TRILIA
<b>Potential Funding:</b>	Federal Grants
<b>Cost Estimate:</b>	10,000 to 75,000
<b>Benefits: (Losses Avoided)</b>	\$1000s in potential savings to various agencies and reduced loss of life and property
<b>Timeline:</b>	Continuous/Ongoing/Annually

<b>Action:</b>	<b>#3 – Integrate Local Hazard Mitigation Plan into General Plan</b>
<b>Jurisdiction:</b>	Multi-jurisdictional
<b>Priority:</b>	Medium
<b>Issue/Background:</b>	The Yuba County Multi-Hazard Mitigation Plan evaluates and addresses the same hazards that must also be addressed in local government general plans in California. Recognizing the potential duplication of effort over evaluation of the same issues, efforts to update the Health and Safety Element should be conducted in coordination with the multi-hazard mitigation plan and to also ensure AB2140 Compliance.
<b>Ideas for Implementation:</b>	The Yuba County Community Development Agency has participated in the development of the countywide mitigation plan from the outset to ensure that a high degree of input and coordination occurred. The Community Development Agency should follow through in the integration and implementation of the recommended policies and actions in the plan for reducing potential hazard-related losses throughout the county. The plan can be integrated as a major part of the county’s Health and Safety Element of the General Plan update.
<b>Responsible Office:</b>	Yuba County Community Development Agency
<b>Partners:</b>	Yuba County OES, Cities, Special Districts, YCWA, TRILIA
<b>Potential Funding:</b>	General Fund
<b>Cost Estimate:</b>	\$5,000
<b>Benefits: (Losses Avoided)</b>	Provides General Plan policy direction for development activity. Potential loss reductions in the \$1000s as any new development within the county will be considered within the context of the county’s Health and Safety Element.
<b>Timeline:</b>	Next General Plan review cycle

<b>Action:</b>	<b>#4 – Implementation of CRS Activities</b>
<b>Jurisdiction:</b>	Multi-jurisdictional
<b>Priority:</b>	High
<b>Issue/Background:</b>	The CRS Program brings several mitigation concepts under one umbrella to help communities develop solid floodplain management programs by reducing flood losses, protecting properties from flood damage, and helping to strengthen the insurance aspects of the NFIP. The CRS is one of FEMA’s premier mitigation programs which also help’s to mitigate damage from other natural hazards. Communities who implement CRS activities receive a rating which results in the reduction of flood insurance premiums for policy holders in that community. This also provides continued compliance with the NFIP.
<b>Ideas for</b>	Continue to implement CRS Activities and look for additional CRS credits under

<b>Implementation:</b>	the 2013 CRS Coordinator's Manual to better protect residence from flood damage and other natural hazards.
<b>Responsible Office:</b>	Yuba County Public Works; Cities, YCWA
<b>Partners:</b>	Yuba County OES, Cities, Special Districts, YCWA, TRILIA
<b>Potential Funding:</b>	General Fund
<b>Cost Estimate:</b>	Staff Time
<b>Benefits: (Losses Avoided)</b>	Increased flood protection and reduction in the cost of flood insurance
<b>Timeline:</b>	Ongoing

<b>Action:</b>	<b>#5 – Non-Structural EQ Mitigation Outreach</b>
<b>Jurisdiction:</b>	Multi-jurisdictional
<b>Priority:</b>	Medium
<b>Issue/Background:</b>	Existing structures can be retrofitted to better withstand damage from seismic events. By educating home and business owners about structural and non-structural retrofit techniques by teaching them how to seismically strengthen their homes and business locations can be an effective mitigation tool. Development of an outreach program to secure furnishings, storage cabinets and utilities to prevent injuries and damages, such as anchoring, installing lathes, using flexible connections on gas and water lines, and bracing propane tanks and water heaters.
<b>Ideas for Implementation:</b>	Countywide implementation efforts
<b>Responsible Office:</b>	Yuba County Community Development
<b>Partners:</b>	Yuba County OES, Cities, Special Districts
<b>Potential Funding:</b>	Federal Grants
<b>Cost Estimate:</b>	\$100,000
<b>Benefits: (Losses Avoided)</b>	Increase in population knowledge of structural and non-structural mitigation.
<b>Timeline:</b>	1 year then Ongoing

<b>Action:</b>	<b>#6 – Countywide Unreinforced Masonry URM Inventory</b>
<b>Jurisdiction:</b>	Multi-jurisdictional
<b>Priority:</b>	Medium
<b>Issue/Background:</b>	Many historic brick buildings are located within Yuba County and need to be tracked accordingly in case of an earthquake.
<b>Ideas for Implementation:</b>	Implement through County, City and YCWA GIS a mechanism to map and track URMs Countywide.
<b>Responsible Office:</b>	Yuba County Public Works, City of Wheatland, Marysville, YCWA
<b>Partners:</b>	Yuba County OES, Cities, Special Districts, YCWA
<b>Potential Funding:</b>	Federal Grants
<b>Cost Estimate:</b>	\$15,000 – 20,000
<b>Benefits: (Losses Avoided)</b>	Accurate inventory of URM Buildings with appropriate tracking will lessen time for Recovery after an EQ.

<b>Timeline:</b>	1 year
------------------	--------

<b>Action:</b>	<b>#7 – Hazard Specific Flood Guidance Annex</b>
<b>Jurisdiction:</b>	Yuba County, Cities, YCWA
<b>Priority:</b>	High
<b>Issue/Background:</b>	Develop a Hazard Specific Flood Annex for all jurisdictions with concentration on flood hazard as described in the Risk Assessment.
<b>Ideas for Implementation:</b>	
<b>Responsible Office:</b>	Reclamation Districts, City and County OES
<b>Partners:</b>	Yuba County Public Works, Special Districts
<b>Potential Funding:</b>	Federal Grants
<b>Cost Estimate:</b>	\$25,000
<b>Benefits: (Losses Avoided)</b>	Provides standard operating policy and procedures for all participating agencies and jurisdictions within Yuba County
<b>Timeline:</b>	1 year

<b>Action:</b>	<b>#8 – WPIC Levee Reconstruction</b>
<b>Jurisdiction:</b>	Yuba County, City of Wheatland
<b>Priority:</b>	High
<b>Issue/Background:</b>	Mitigate overtopping and through seepage along the WPIC by raising WPIC Levee crown an average of 1.2 feet; add landside fill and fill in a ditch at landside toe; construct centerline cutoff slurry wall 35-44 feet deep depending on site.
<b>Ideas for Implementation:</b>	
<b>Responsible Office:</b>	RD784, RD817, RD2103
<b>Partners:</b>	Yuba County Public Works, Special Districts, TRILIA
<b>Potential Funding:</b>	Federal Grants
<b>Cost Estimate:</b>	
<b>Benefits: (Losses Avoided)</b>	Provides levee stabilization and prevention of overtopping/through seepage in the event of a flood.
<b>Timeline:</b>	Ongoing

<b>Action:</b>	<b>#9 – DWR Floodfight Training</b>
<b>Jurisdiction:</b>	Yuba County, Cities, YCWA
<b>Priority:</b>	High
<b>Issue/Background:</b>	Floodfight preparedness training to all jurisdictional employees that work on the levee sites to cover flood worker safety, flood fighting techniques, sandbagging, levee reinforcement with visquine etc.
<b>Ideas for Implementation:</b>	
<b>Responsible Office:</b>	Multi-jurisdictional
<b>Partners:</b>	Yuba County Public Works, Special Districts

<b>Potential Funding:</b>	Federal Grants
<b>Cost Estimate:</b>	Staff Time
<b>Benefits: (Losses Avoided)</b>	Trains personnel to manage possible flood emergencies in advance of the flood
<b>Timeline:</b>	6 months

<b>Action:</b>	<b>#10 – Winter Weather Preparedness Campaign</b>
<b>Jurisdiction:</b>	Multi-jurisdictional
<b>Priority:</b>	High
<b>Issue/Background:</b>	The Planning Team identified the continuation and enhancement of the natural hazards education and awareness program in Yuba County to be a valuable tool for information to residents. Based on the Public participation Survey for the mitigation plan update project, online information is an effective way to disseminate information to Yuba County. Develop a Winter Weather Preparedness program to target severe weather in Yuba County.
<b>Ideas for Implementation:</b>	Improved information about natural hazards may be implemented into media outlets and tools already in use by the county, such as the following: 1) a media list is compiled at the County Administration Office for distribution of fax or email information; 2) the Be Prepared Yuba website home page is updated, as needed, to include information on pertinent topics, such as Warming Centers, Heat Related Illness, All Hazards Preparedness information, etc.; The county may also work with special districts, the cities and other entities to provide awareness and education on hazards and steps to mitigate.
<b>Responsible Office:</b>	Yuba County OES
<b>Partners:</b>	Cities, Special Districts, YCWA, TRILIA
<b>Potential Funding:</b>	Federal Grants
<b>Cost Estimate:</b>	100,000
<b>Benefits: (Losses Avoided)</b>	Provides timely, accurate information to our public, both constituents and employees. Ensures consistent information flow. Improves public awareness and education.
<b>Timeline:</b>	Continuous/Ongoing/Annually

<b>Action:</b>	<b>#11 – Hydrant System</b>
<b>Jurisdiction:</b>	Multi-jurisdictional
<b>Priority:</b>	High
<b>Issue/Background:</b>	
<b>Ideas for Implementation:</b>	Increase available water sources to continue the hydrant system on Willow Glen Road at Marysville Road and Loma Rica.
<b>Responsible Office:</b>	YCWA, Fire Districts
<b>Partners:</b>	County, Cities, Special Districts
<b>Potential Funding:</b>	Federal Grants, CWPP Grants
<b>Cost Estimate:</b>	\$3 million
<b>Benefits: (Losses Avoided)</b>	Improves fire fighting assets and reduces insurance costs
<b>Timeline:</b>	Continuous/Ongoing/Annually